	<h1>Parts Bulletin</h1>	Models	2013-2014 MY SONATA (YF) SANTA FE SPORT (AN)
		Parts Bulletin Number	PB001-18-01-007-1
SUBJECT: Part Number Change for Recall Campaign 162 referencing TSB#: 18-01-007-1. This Parts Bulletin is meant to be used only for Parts Update information only.	Date	June 6, 2018	
	Area	USA	
	Type	Parts Update Notification	

Description: HMA is providing this Parts Bulletin to advise of the newly created reman part number information to the dealers as it relates to Recall Campaign 162.

As described in TSB #: 18-01-007-1, Certain 2013-2014 model year Sonata (YF) and 2013-2014 model year Santa Fe Sport (AN) vehicles equipped with 2.4L and 2.0T GDI engines require an inspection to confirm normal operation. The inspection procedure will help indicate if the engine is operating normally or if an excessive connecting rod bearing wear condition in the engine crankcase may be present. If the vehicle continues to be driven with a worn connecting rod bearing, the bearing can fail and the vehicle could stall.

Perform the Inspection Procedure as described on Page 5 of the TSB to inspect the engine for noise. The noise inspection will result in a PASS, NO PASS, or RETEST.

For Parts Ordering actions, please reference the following chart with the updated Reman Part Numbers that should be ordered:

RC 162 Engine Reman Part Numbers and Vehicle Application Beginning on June 6, 2018					
Description	Part Number	MODEL	ENGINE	MODEL YEAR	COMMENTS
ENGINES	211012GK50QQHRM	YFA (Sonata)	2.4L	13MY	Dealer must still get PA approval for release of these reman engine parts.
	211012GK70QQHRM	YFA (Sonata)	2.4L	14MY	
	211012GK60QQHRM	YFA (Sonata)	2.0T	13MY	
	211012GK80QQHRM	YFA (Sonata)	2.0T	14MY	
	211012GK01QQHRM	ANA (Santa Fe Sport)	2.4L	13MY	
	211012GK02QQHRM	ANA (Santa Fe Sport)	2.4L	14MY	
	211012GK03QQHRM	ANA (Santa Fe Sport)	2.0T	13MY	
	211012GK04QQHRM	ANA (Santa Fe Sport)	2.0T	14MY	

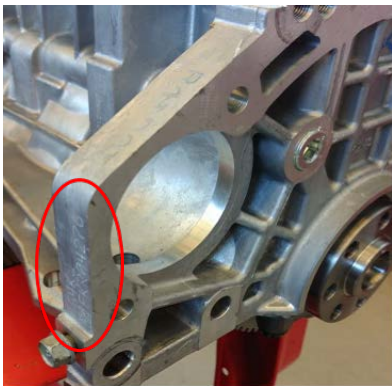
Notice 1: Please note that these newly introduced reman engines have been established for this particular service action and will be available to purchase as of June 6, 2018.

Notice 2: A core deposit will be collected on each engine purchased for the RC 162 Reman program. In order for dealers to receive reimbursement of the core deposit on the RC 162 Reman engine part numbers, the entire core must be returned to Hyundai Motors America under the core collection process as detailed below.

Notice 3: A \$1,000.00 core charge will be charged on each engine purchase for the RC162 Reman part.

In order for dealers to receive a credit for the core charge amount, the entire engine core must be returned through current reman core return procedure, as follows:

1. Retain the original packaging materials as received.
 - When an engine is supplied in a cardboard box, do not discard the box, take the engine out of box and place the removed engine into the same shipping box with all cushioning materials so you may return the core for full applied credit.
2. After replacing an engine under RC162 and as detailed in TSB#: 18-01-007-1, drain all fluids as much as possible, put the entire core into the retained packaging material and request a core pick-up on the HyundaiDealer.com website under core returns.
 - Failure to drain all fluids may result in the deduction of partial core credit.
3. Required documents should be included:
 - a) Reman Engine Core Worksheet
 - Dealer should include the correct engine serial number and note it on the core return worksheet.
 - It is necessary for the dealer to add the Serial Number as shown in the photo as a deduction would apply for missing serial number information:



- b) Copy of Repair Order
 - Please place all documents in a plastic bag and tie to the top of engine core (using a tie-strap or wire) to avoid any missing document in transit.
4. Return multiple cores under the same Bill of Lading, if possible.
5. All core credit related concerns or disputes should be submitted within 2 days after the core credit is issued.

Notice 4: Dealer orders that are currently in the system as “QQH” parts will be replaced with corresponding QQHRM parts and will be filled with the new reman part. Dealers will be contacted directly with order information details.