	<h1>Parts Bulletin</h1>	Models	2011-2012 MY SONATA (YF)
		Parts Bulletin Number	PB001-19-01-011H
SUBJECT: Part Number Change for Recall Campaign 132 referencing TSB#: 19-01-011H. This Parts Bulletin is meant to be used only for Parts Update information only.		Date	April 25, 2019
		Area	USA
		Type	Parts Update Notification

Description: HMA is providing this Parts Bulletin to advise of the newly created reman part number information to the dealers as it relates to Recall Campaign 132.

As described in TSB #: 19-01-011H, 2011-2012 model year Sonata (YF) vehicles equipped with 2.4L and 2.0T GDI engines require an inspection to confirm normal operation. The inspection procedure will help indicate if the engine is operating normally or if an excessive connecting rod bearing wear condition in the engine crankcase may be present. If the vehicle continues to be driven with a worn connecting rod bearing, the bearing can fail and the vehicle could stall.

Perform the Inspection Procedure as described on Page 5 of the TSB to inspect the engine for noise. The noise inspection will result in a PASS, NO PASS, or RETEST.

For Parts Ordering actions, please reference the following chart with the updated Reman Part Numbers that should be ordered:

RC 132 Engine Reman Part Numbers and Vehicle Application Beginning on April 24, 2019					
Description	Part Number	MODEL	ENGINE	MODEL YEAR	COMMENTS
ENGINES	211012GK50QQHRM	YF (Sonata)	2.4L	11-12 MY	Dealer must still get PA approval for release of these reman engine parts.
	211012GK60QQHRM	YF (Sonata)	2.0T	11-12 MY	

Notice 1: Please note that these reman engines are currently established for this particular service action and are available for purchase effective immediately.

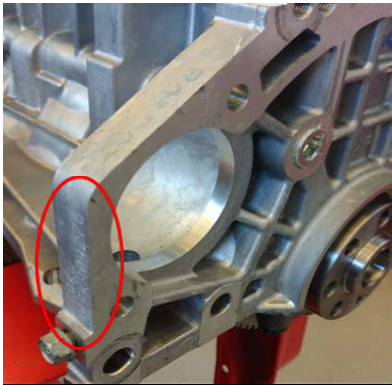
Notice 2: A core deposit will be collected on each engine purchased for the RC 132 Reman program. In order for dealers to receive reimbursement of the core deposit on the RC 132 Reman engine part numbers, the entire core must be returned to Hyundai Motors America under the core collection process as detailed below. **We are requesting each dealer please attach a sheet of paper to the outside packaging container with the words as follows: "RC132 Reman Core".**

Please keep in mind this is for 11 & 12 MY Sonata Vehicle (21101-2GK50-QQHRM & 21101-2GK60-QQHRM) Parts ONLY.

Notice 3: A \$1,000.00 core charge will be charged on each engine purchase for the RC132 Reman part.

In order for dealers to receive a credit for the core charge amount, the entire engine core must be returned through current reman core return procedure as follows:

1. Retain the original packaging materials as received.
 - When an engine is supplied in a cardboard box, do not discard the box, take the engine out of box and place the removed engine into the same shipping box with all cushioning materials so you may return the core for full applied credit.
2. After replacing an engine under RC132 and as detailed in TSB#: 19-01-011H, drain all fluids as much as possible, put the entire core into the retained packaging material and request a core pick-up on the Hyundaiadealer.com website under core returns.
 - Failure to drain all fluids may result in the deduction of partial core credit.
3. Required documents should be included:
 - a) Reman Engine Core Worksheet
 - Dealer should include the correct engine serial number and note it on the core return worksheet.
 - **It is necessary for the dealer to add the Serial Number as shown in the photo as a deduction would apply for missing serial number information:**



- b) Copy of Repair Order
 - Please place all documents in a plastic bag and tie to the top of engine core (using a tie-strap or wire) to avoid any missing document in transit.
4. Return multiple cores under the same Bill of Lading, if possible.
5. All core credit related concerns or disputes should be submitted within 2 days after the core credit is issued.

Notice 4: Dealer orders that are currently in the system as "QQH" parts will be superseded to corresponding QQHRM parts and will be filled with the new reman part. Orders will automatically transition to the new reman part.