



Reliability Driven®

Procedure 6-32

Date: May. 16, 2017

UNDER RADIATOR GRILL

Description:

MCI has prepared a procedure to install a protective grill under the radiator to protect from road debris damaging the underside of the radiator.

The procedure is applicable to J4500 coaches between the range of, and including, 65630, 65637 to 68195.

A labor allowance of 0.5 hours will be granted for this rework.

Parts

<u>Qty.</u>	<u>New P/N</u>	<u>Description</u>
1	26-08-0045	Kit, Under Radiator Grill
		<i>Kit Contents are:</i>
1	08-20-2896	Guard, Radiator
2	19-01-1736	Capscrew, 3/8
2	19-03-0535	Locknut, 3/8
8	19-1-688	Screw, Pan, 1/4
8	19-2-69	Washer, 1/4

Service Procedure:



Read this entire procedure before beginning work.

Use Safe Shop Practices At All Times.

1. Turn the main battery disconnect to the OFF position.
2. Chock both sides of the tires.
3. Using the mounting hardware, orient and install the radiator guard as shown in Figures 1 and 2. Torque the locknut to 33-37 ft-lbs.

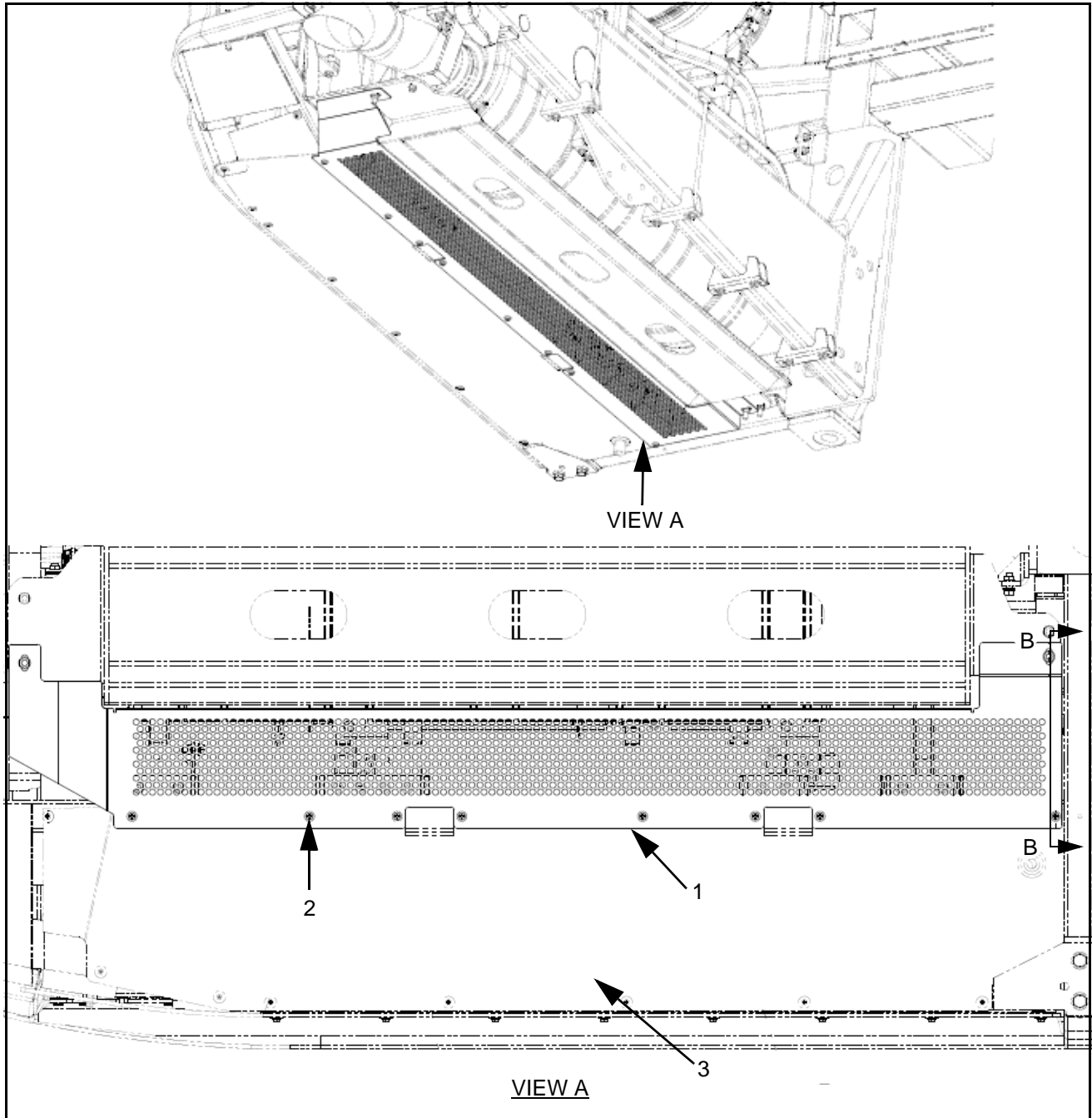


Figure 1.

Item	Figure 1 Description
1	Radiator guard
2	Pan screw and washer, 1/4
3	Radiator closing panel, reference only



Procedure 6-32

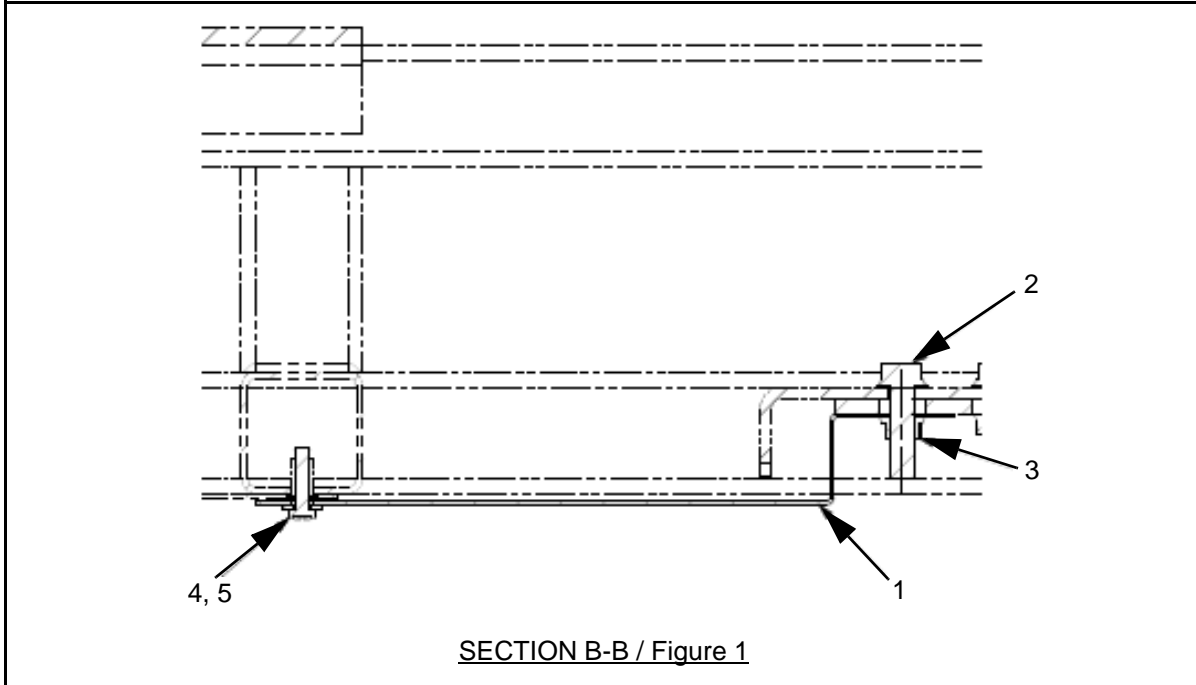


Figure 2.

Item	Figure 2 Description
1	Radiator guard
2	Capscrew, 3/8
3	Locknut, 3/8. Torque to 33-37 ft-lbs.
4	Pan screw, 1/4
5	Washer, 1/4

Procedure Complete.