

EA19-001

FCA

9/12/2019

ENCLOSURE 4

ALLEGED DEFECT NOT RULED
OUT

CAIR Backup





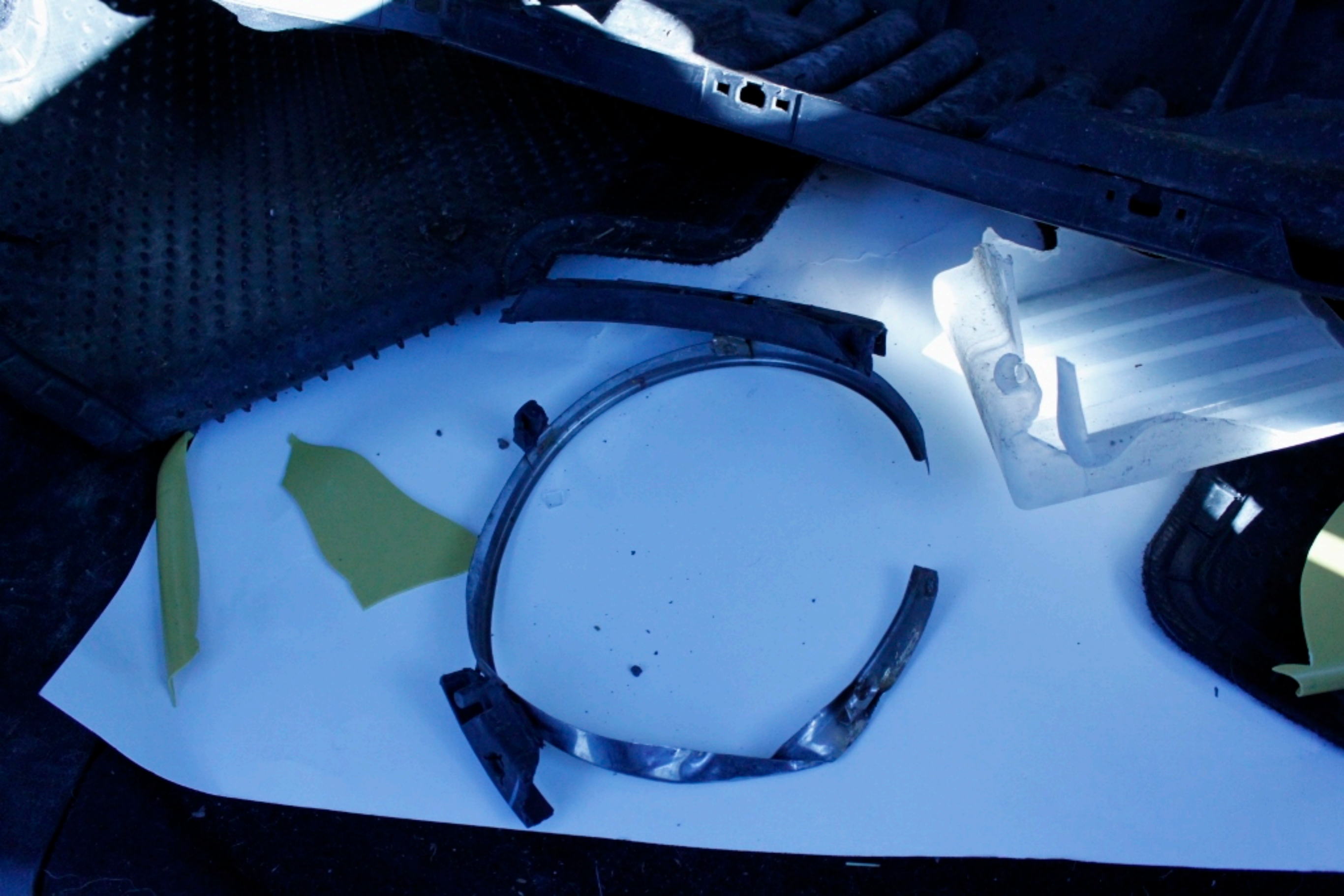






























Jeep



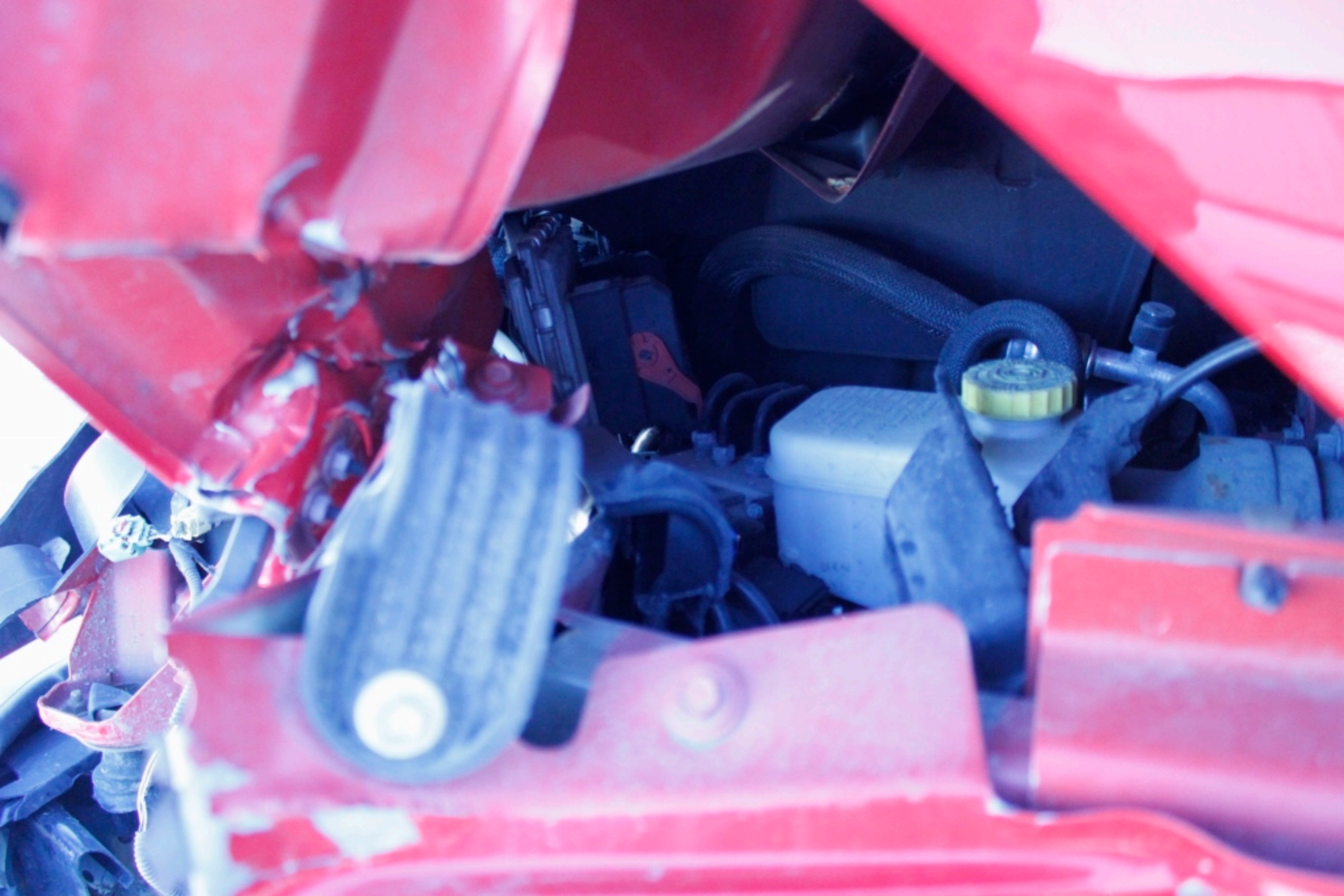


















Jeep

SRS
AIRBAG

CANCEL

ON/OFF

SET

RES

⏪

⏩

☎

VR

MENU

40 60 80 100











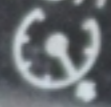
▲	Ⓜ
◀	MENU
☎	VR 30

SET
-

CANCEL

RES
+

ON/OFF

















SEEK

SEEK

INFO

FF

SINGLE DISC + MP3 + AUX

PUSH ON

AM/FM

SAT

DISC
AUX

SIRIUS

A/C
OFF

VOLUME

SET
PIND

1

2

3

4

5

6

AUTO

AUTO

Jeep

Jeep

FAN

A/C
PUSH

PUSH





P









TIRE AND LOADING INFORMATION

LOADING CAPACITY - TOTAL 5 FRONT 2 REAR 3
THE COMBINED WEIGHT OF OCCUPANTS AND CARGO SHOULD NEVER EXCEED
385 KG OR 850 LB

	FRONT	REAR	SPARE
TIRE	P255/75R17	P255/75R17	P255/75R17
ORIGINAL TIRE SIZE	240 kPa / 35 PSI	240 kPa / 35 PSI	240 kPa / 35 PSI
INFLATION PRESSURE			



SEE OWNER'S MANUAL FOR ADDITIONAL INFORMATION

CL116965

MFD BY CHRYSLER

DATE OF MFR: 8-11

GAWR FRONT: 1259 KG

17X7.5

GAWR REAR: 1452 KG

17X7.5









⚠ WARNING

EVEN WITH ADVANCED AIRBAGS

- CHILDREN CAN BE KILLED OR SERIOUSLY INJURED BY THE AIRBAG.
- THE BACK SEAT IS THE SAFEST PLACE FOR CHILDREN.
- NEVER PUT A REAR-FACING CHILD SEAT IN THE FRONT.
- ALWAYS USE SEATBELTS AND CHILD RESTRAINTS.
- SEE OWNER'S MANUAL FOR MORE INFORMATION ABOUT AIRBAGS.

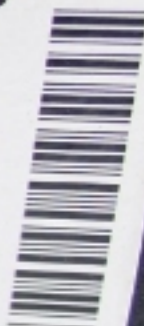


04480652AA

⚠ MISE EN GARDE

MÊME AVEC DES SACS GONFLABLES PERFECTIONNÉS

- LES ENFANTS PEUVENT ÊTRE TUÉS OU GRAVEMENT BLESSÉS PAR UN SAC GONFLABLE.
- LA BANQUETTE ARRIÈRE EST LA PLACE LA PLUS SÉCURITAIRE POUR LES ENFANTS.
- NE JAMAIS PLACER UN SIÈGE POUR ENFANT ORIENTÉ VERS L'ARRIÈRE À L'AVANT DU VÉHICULE.
- UTILISEZ TOUJOURS LA CEINTURE DE SÉCURITÉ ET LE SYSTÈME DE RETENUE POUR ENFANT.
- CONSULTEZ LE GUIDE DE L'AUTOMOBILISTE POUR OBTENIR PLUS DE RENSEIGNEMENTS SUR LES SACS GONFLABLES.



 **WARNING**

THE TOP AND DOORS ON THIS VEHICLE ARE DESIGNED ONLY FOR PROTECTION AGAINST THE ELEMENTS. DO NOT RELY ON THE TOP AND DOORS TO CONTAIN OCCUPANTS WITHIN THE VEHICLE OR TO PROTECT AGAINST INJURY DURING AN ACCIDENT.

WEAR SEATBELTS AT ALL TIMES

55285 183AA

WARNING

DESIGNED ONLY FOR PROTECTION AGAINST THE
FORCES TO CONTAIN OCCUPANTS WITHIN THE
VEHICLE IN THE EVENT OF AN ACCIDENT.

SEATBELT MUST BE WORN AT ALL TIMES

55395 183AA

02702 418

2022028

16

2022028

12

02701 418




























































 **BRAKE**  







BRAKE



P R N D



CRUISE 4WD
OFF ROAD

113739



 BRAKE



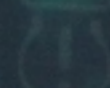
BRAKE



P R N D



CRUISE 4WD
OFF ROAD



113739



ABS



BRAKE



RPM

x 1000



P R N D R
CRUISE 4WD
OFF ROAD

113739



P R N D
CRUISE 4WD OFF ROAD
113739









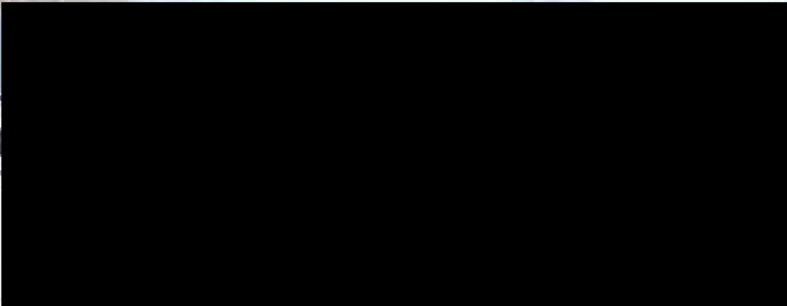


















SPC

WRANGLER
UNLIMITED

WRANGLER

Jeep

GOODYEAR











Jeep



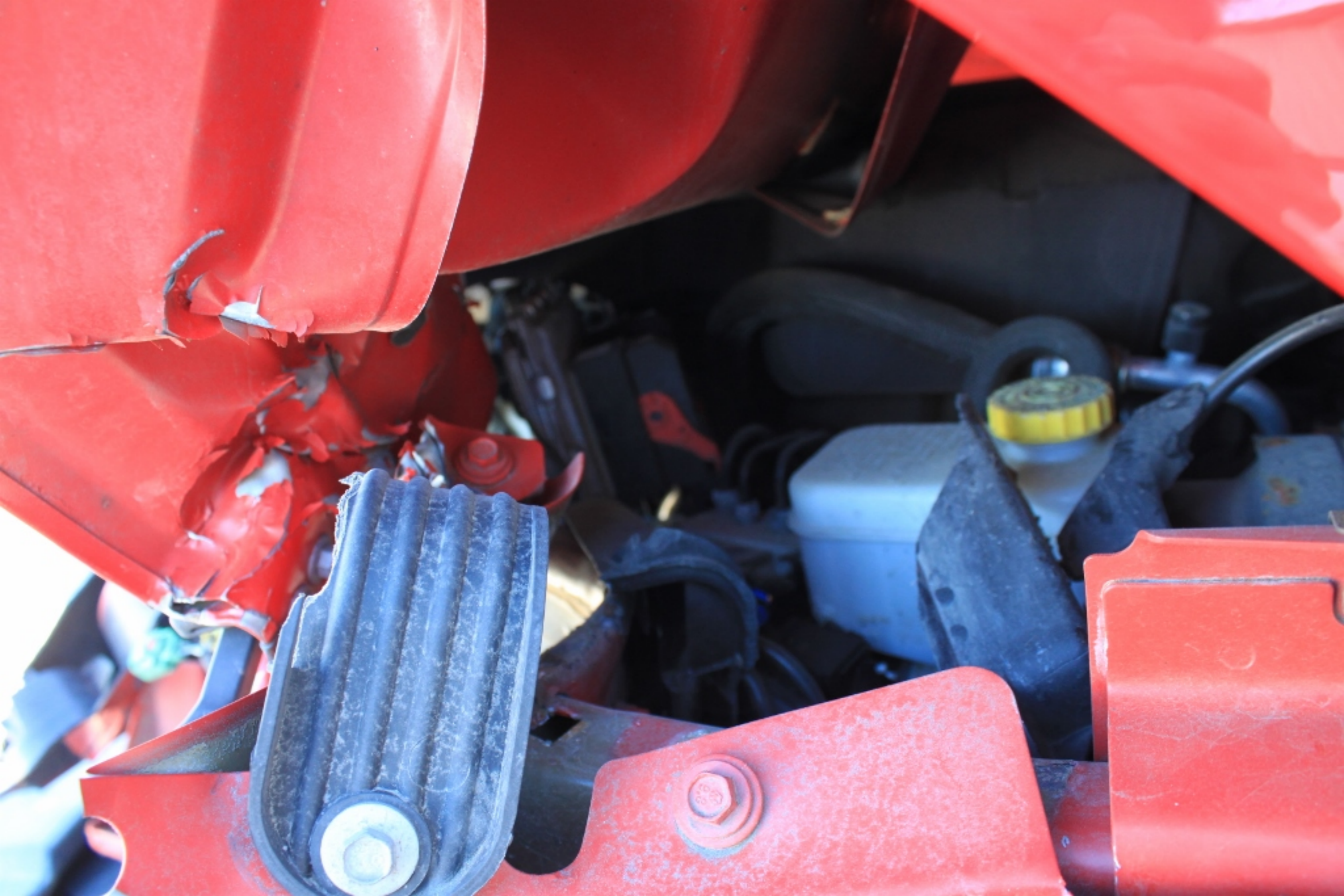


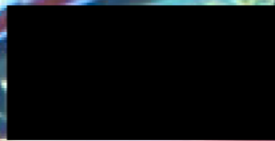












TRAIL
RATED

STOP

SALVAGE NOTICE

THIS VEHICLE HAS BEEN INSPECTED
AND INVENTORIED BY A
LICENSED INSURANCE APPRAISER.

ANY PERSON WHO TAMPERS WITH
THIS VEHICLE OR STICKER
WILL BE PROSECUTED TO THE
FULL EXTENT OF THE LAW.

ATTACH TO SIDE GLASS





SPORT



SPORT

WRANGLER
UNLIMITED

WRANGLER

GOODYEAR









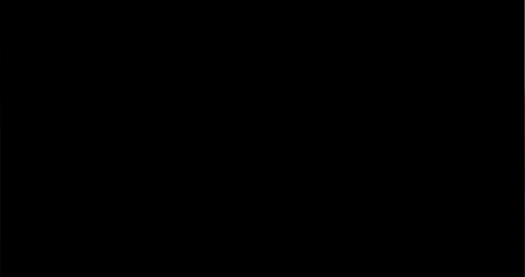












11000

















SPORT
WRANGLER
UNLIMITED



SPORT

**RANGLER
UNLIMITED**



























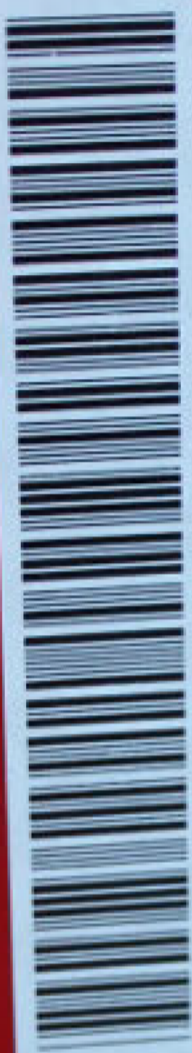




MPV BY CHRYSLER GROUP LLC

DATE OF MFG:	8-11	GVWR:	
GVW FRONT:	1259 KG 1707.5	GVW LB WITH RIMS AT	2775 LB
GVW REAR:	1452 KG 1707.5	GVW LB WITH RIMS AT	3200 LB

2450 KG	5400 LB	TIRES
P255/75R17		
240 KPA (35 PSI) COLD		
P255/75R17		TIRES
240 KPA (35 PSI) COLD		



THIS VEHICLE CONFORMS TO ALL APPLICABLE U.S.A. FEDERAL MOTOR VEHICLE SAFETY AND THEFT PREVENTION STANDARDS IN EFFECT ON THE DATE OF MANUFACTURE SHOWN ABOVE.

VEHICLE MADE IN U.S.A. PRINT: P04 TYPE: MPV TRIM: A7X9
 MDH: 082019 650AA