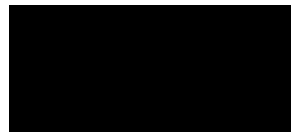


PE18-012

GM

3-27-2019

Q3













7987 MILES
4/17/2018
P2282803
1A9X2128

05-18

Oil Change



jiffylube



Your next Jiffy Lube Signature Service Oil Change is due at:

29407 MILES

4/17/2018
PZSP020EB
TXHKXE193





























⚠ WARNING
EVEN WITH ADVANCED AIR BAGS

- Children can be killed or seriously injured by the air bag.
- The back seat is the safest place for children.
- Never sit a rear-facing child seat in the front.
- Always use seat belts and child restraints.
- See owner's manual  for more information about air bags.

⚠ AVERTISSEMENT
MÊME AVEC DES SACS GONFLABLES INTELLIGENTS

- Les enfants peuvent être tués ou gravement blessés par le sac gonflable.
- Le siège arrière est l'endroit le plus sûr pour les enfants.
- Ne jamais placer à l'avant un siège pour enfant faisant face à l'arrière.
- Toujours utiliser les ceintures de sécurité et les ensembles de retenue pour enfant.
- Voir le guide du propriétaire  pour plus d'information à propos des sacs gonflables.


FRONT 3-112 4-11A-8173




Toyota
SALES & SERVICE
1-800-338-TOYOTA
www.toyota.com

⚠ WARNING

EVEN WITH ADVANCED AIR BAGS

- Children can be killed or seriously injured by the air bag.
- The back seat is the safest place for children.
- Never put a rear-facing child seat in the front.
- Always use seat belts and child restraints.
- See owner's manual  for more information about air bags.



Printed in USA

 15804773

⚠ AVERTISSE

MÊME AVEC DES SA

- Les enfants peuvent être tu
- Le siège arrière est l'endro
- Ne jamais placer à l'avant u
- Toujours utiliser les ceinture
- pour enfant.
- Voir le guide du propriétaire
- des sacs gonflables.







⚠ WARNING
EVEN WITH ADVANCED AIR BAGS

- Children can be killed or seriously injured by the air bag.
- The back seat is the safest place for children.
- Never put a rear-facing child seat in the front.
- Always use seat belts and child restraints.
- See owner's manual  for more information about air bags.

⚠ AVERTISSEMENT
MÊME AVEC DES SACS GONFLABLES INTELLIGENTS


- Les enfants peuvent être tués ou gravement blessés par le sac gonflable.
- Le siège arrière est l'endroit le plus sûr pour les enfants.
- Ne jamais placer à l'avant un siège pour enfant tourné face à l'avant.
- Toujours utiliser les ceintures de sécurité et les dispositifs de retenue pour enfant.
- Voir le guide du propriétaire  pour plus d'informations à propos des sacs gonflables.



100000-000 00000000


WARNING

EVEN WITH ADVANCED AIR BAGS

- Children can be killed or seriously injured by the air bag.
- The back seat is the safest place for children.
- Never put a rear-facing child seat in the front.
- Always use seat belts and child restraints.
- See owner's manual  for more information about air bags.



Printed in USA

 15804773

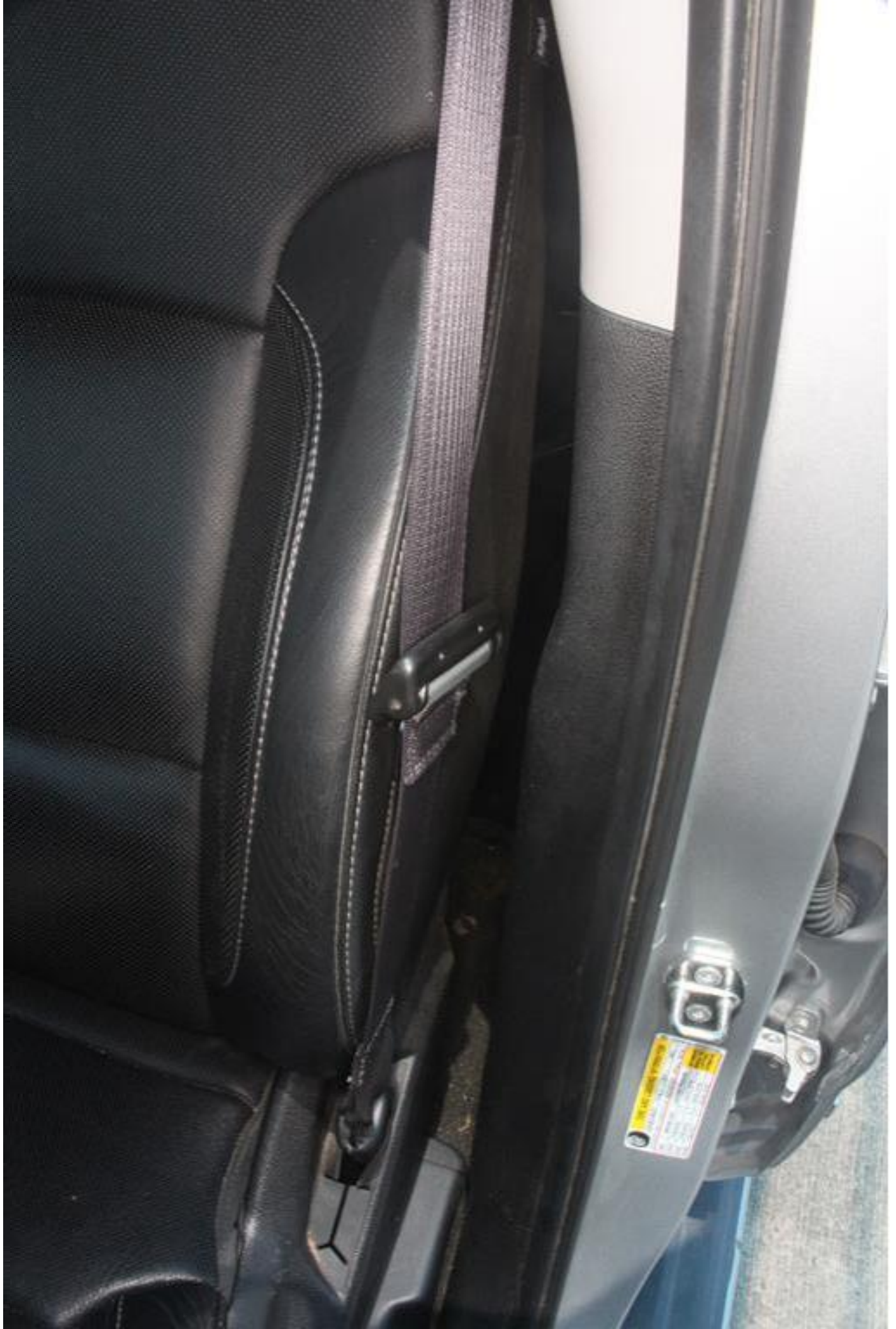


MÈ

- Les
- Le s
- Ne j
- Touj
- pour
- Voir
- des s











473151K

✓PPK













473151M
1114



SEE REVEN





70533



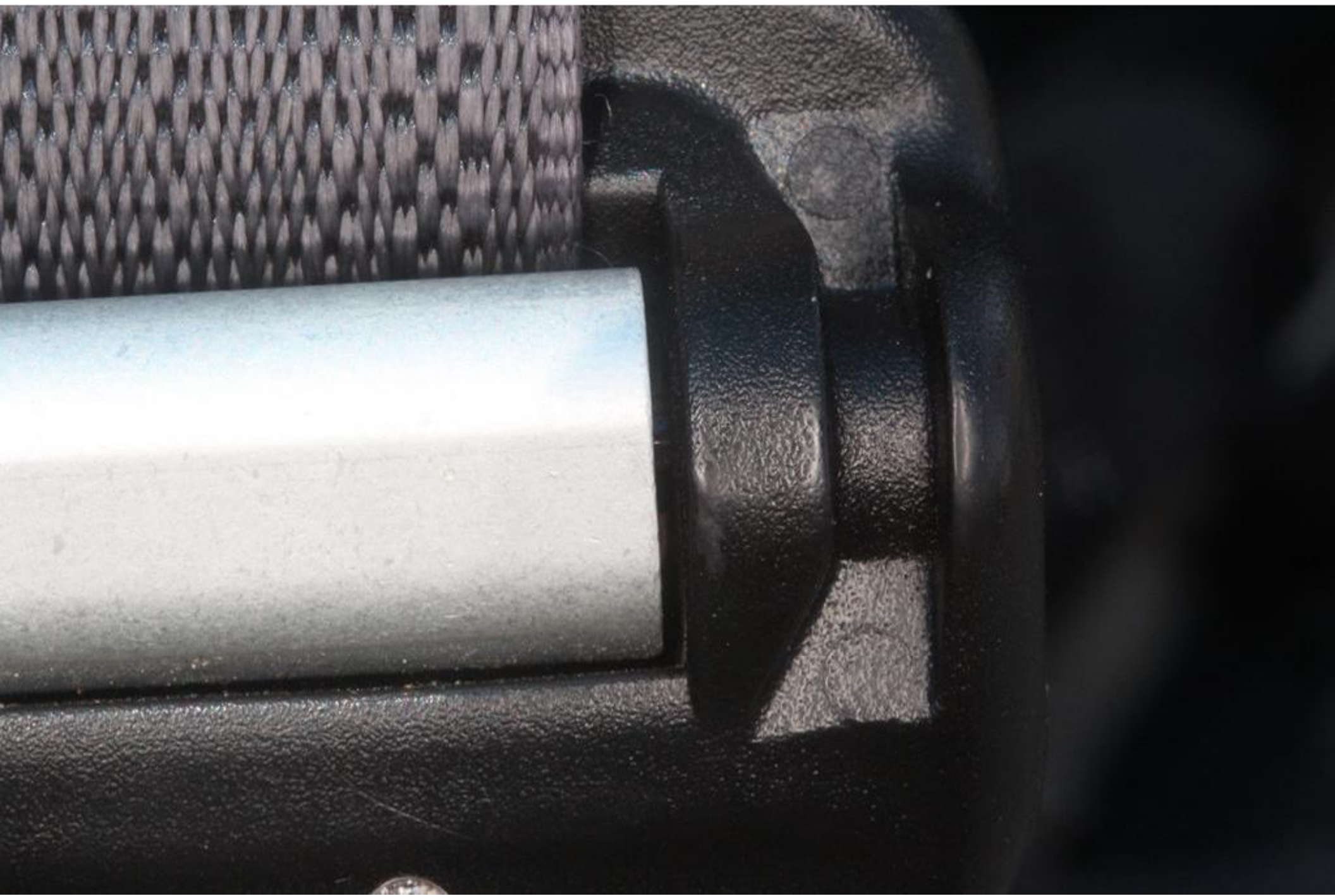










































2F

6

2F

7

2F

8

2F

9

2F

10

2F

11

30

31

32

33

34

35

3F
36





3F

6

3F

7

3F

8

3F

9

3F

10

3F

11

4

42

43

44

45

46

47

4









11 59
1 60
SF
1 61
SF
2 62
SF
3 63
SF
4 64
SF
5 65
SF
6 66

















11

12

1
13

1F

2
14

1F

3
15

1F

4
16

1F

5
17

1F

6
18

1F



5 1F 6 1F 7 1F 8 1F 9 1F 10 1F 11 24
17 18 19 20 21 22 23 24









3F

6

3F

7

3F

8

3F

9

3F

10

3F

11

4

1

42

43

44

45

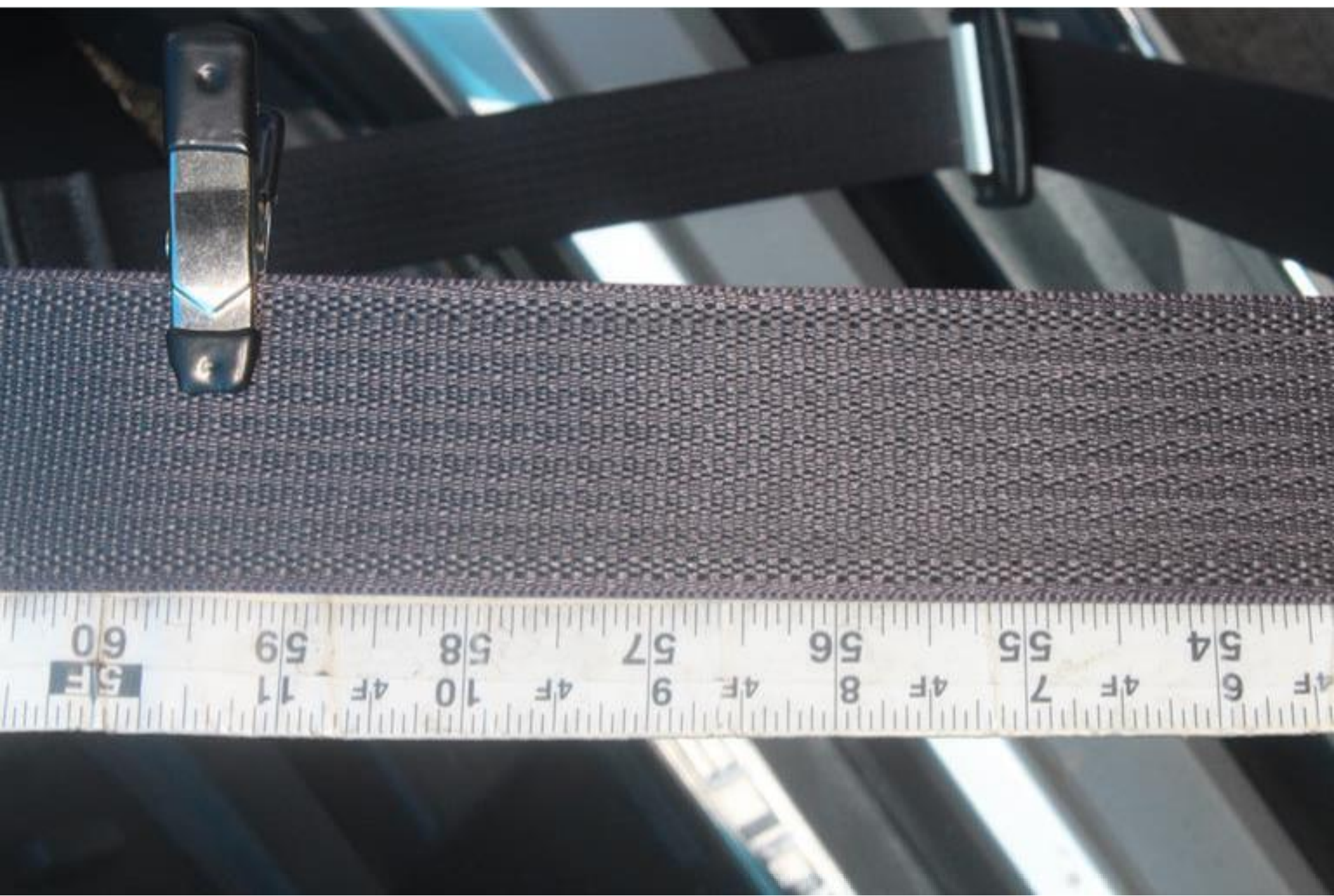
46

47

4



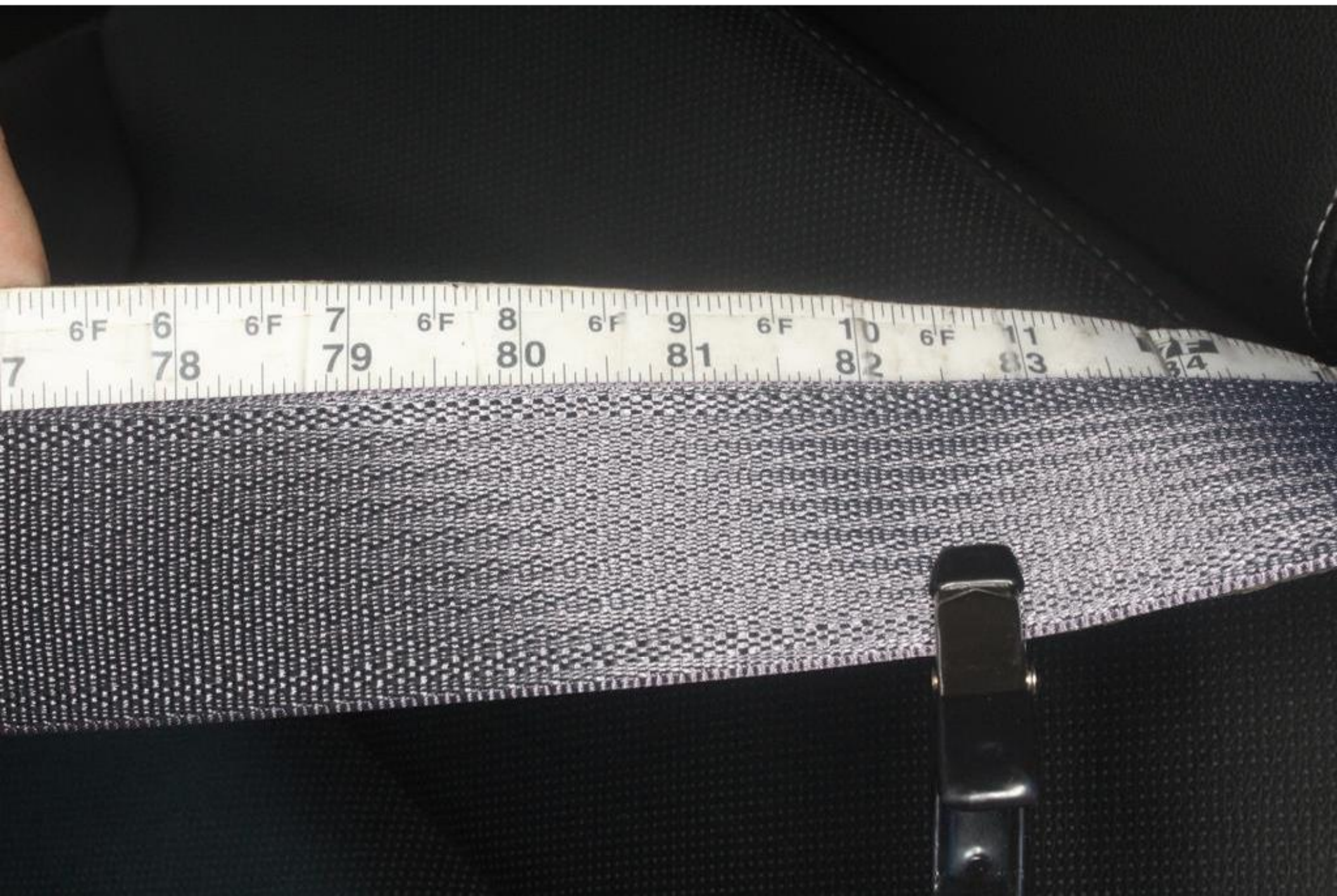






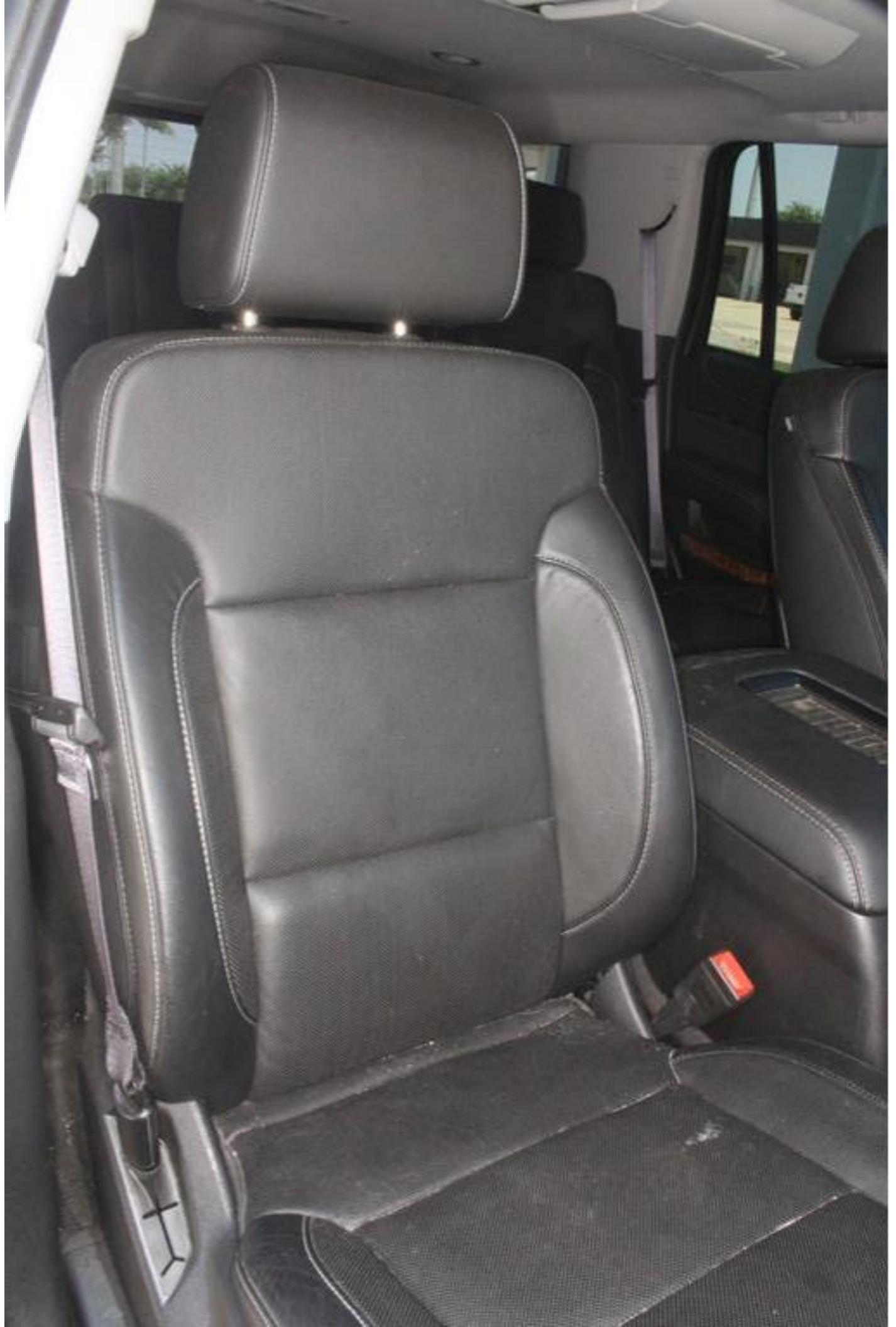






















































MPH
313mi

PRNDM



0

MPH

22313 mi

P R N D M



Remaining
Oil Life
95%

Oil Life

PRNDM



34

33

34

34

Tire Pressure (psi)

P R N D M



P R N D M



Data Display

Create Report

Diagnostic Data Display Graphical Data Display Line Graph

Antilock Braking Data



Parameter Name	Value	Unit	Control Module
System Voltage	12.94	V	Electronic Brake Control Module
ABS Pump Motor Voltage	0.00	V	Electronic Brake Control Module
Brake Pressure Sensor	2314	kPa	Electronic Brake Control Module
Brake Pressure Sensor	0.51	V	Electronic Brake Control Module
Left Front Wheel Speed Sensor	0	km/h	Electronic Brake Control Module
Right Front Wheel Speed Sensor	0	km/h	Electronic Brake Control Module
Left Rear Wheel Speed Sensor	0	km/h	Electronic Brake Control Module
Right Rear Wheel Speed Sensor	0	km/h	Electronic Brake Control Module
Steering Wheel Angle	363.7	°	Electronic Brake Control Module
Requested Torque	58	%	Electronic Brake Control Module
Delivered Torque	42	%	Electronic Brake Control Module
Brake Pedal Position Sensor	Inactive		Electronic Brake Control Module
Traction Control System Status	Inactive		Electronic Brake Control Module
Vehicle Stability System Status	Inactive		Electronic Brake Control Module
Brake Fluid Level Sensor	OK		Electronic Brake Control Module
Antilock Braking System	OK		Electronic Brake Control Module
Traction Control System	OK		Electronic Brake Control Module
Vehicle Stability System	OK		Electronic Brake Control Module
Panic Brake Assist Status	OK		Electronic Brake Control Module

Back

Contact Us

Home

Vehicle Menu

MD: 22

GDS 2 v.20.0.18400 GM Global v2016 4.0 VIN: 1GNSKCKC [REDACTED] 2016 Chevrolet Tahoe Moduli Diagnostics, Electronic Brake Control Module





Data Display

Create Report

Diagnostic Data Display Graphical Data Display Line Graph

Antilock Braking Data



Parameter Name	Value	Unit	Code
System Voltage	12.67	V	Electronic Brake Control
ABS Pump Motor Voltage	0.00	V	Electronic Brake Control
Brake Pressure Sensor	9434	kPa	Electronic Brake Control
Brake Pressure Sensor	2.08	V	Electronic Brake Control
Left Front Wheel Speed Sensor	0	km/h	Electronic Brake Control
Right Front Wheel Speed Sensor	0	km/h	Electronic Brake Control
Left Rear Wheel Speed Sensor	0	km/h	Electronic Brake Control
Right Rear Wheel Speed Sensor	0	km/h	Electronic Brake Control
Steering Wheel Angle	363.6	°	Electronic Brake Control
Requested Torque	58	%	Electronic Brake Control
Delivered Torque	42	%	Electronic Brake Control
Brake Pedal Position Sensor	Active		Electronic Brake Control
Traction Control System Status	Inactive		Electronic Brake Control
Vehicle Stability System Status	Inactive		Electronic Brake Control
Brake Fluid Level Sensor	OK		Electronic Brake Control
Antilock Braking System	OK		Electronic Brake Control
Traction Control System	OK		Electronic Brake Control
Vehicle Stability System	OK		Electronic Brake Control
Panic Brake Assist Status	OK		Electronic Brake Control

Back

Contact Us

Home

Vehicle Menu

GDS 2 v.20.0.18400 GM Global v2018.4.0 VIN: 1GNSKCKC0G6 [REDACTED] 2016,Chevrolet,Tahoe,Module Diagnostics,Electronic Brake Control Module



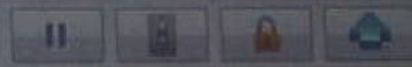


Data Display

Create Report

Diagnostic Data Display Graphical Data Display Line Graph

Antilock Braking Data



Parameter Name	Value	Unit	Control Module
System Voltage	12.81	V	Electronic Brake Control Module
ABS Pump Motor Voltage	0.00	V	Electronic Brake Control Module
Brake Pressure Sensor	2314	kPa	Electronic Brake Control Module
Brake Pressure Sensor	0.51	V	Electronic Brake Control Module
Left Front Wheel Speed Sensor	0	km/h	Electronic Brake Control Module
Right Front Wheel Speed Sensor	0	km/h	Electronic Brake Control Module
Left Rear Wheel Speed Sensor	0	km/h	Electronic Brake Control Module
Right Rear Wheel Speed Sensor	0	km/h	Electronic Brake Control Module
Steering Wheel Angle	363.6	°	Electronic Brake Control Module
Requested Torque	59	%	Electronic Brake Control Module
Delivered Torque	42	%	Electronic Brake Control Module
Brake Pedal Position Sensor	Inactive		Electronic Brake Control Module
Traction Control System Status	Inactive		Electronic Brake Control Module
Vehicle Stability System Status	Inactive		Electronic Brake Control Module
Brake Fluid Level Sensor	OK		Electronic Brake Control Module
Antilock Braking System	OK		Electronic Brake Control Module
Traction Control System	OK		Electronic Brake Control Module
Vehicle Stability System	OK		Electronic Brake Control Module
Panic Brake Assist Status	OK		Electronic Brake Control Module

Back

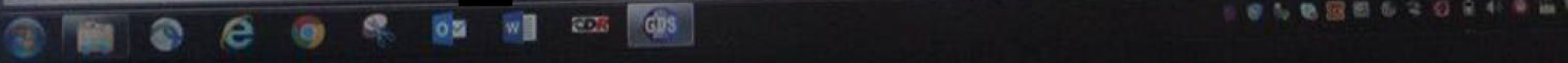
Contact Us

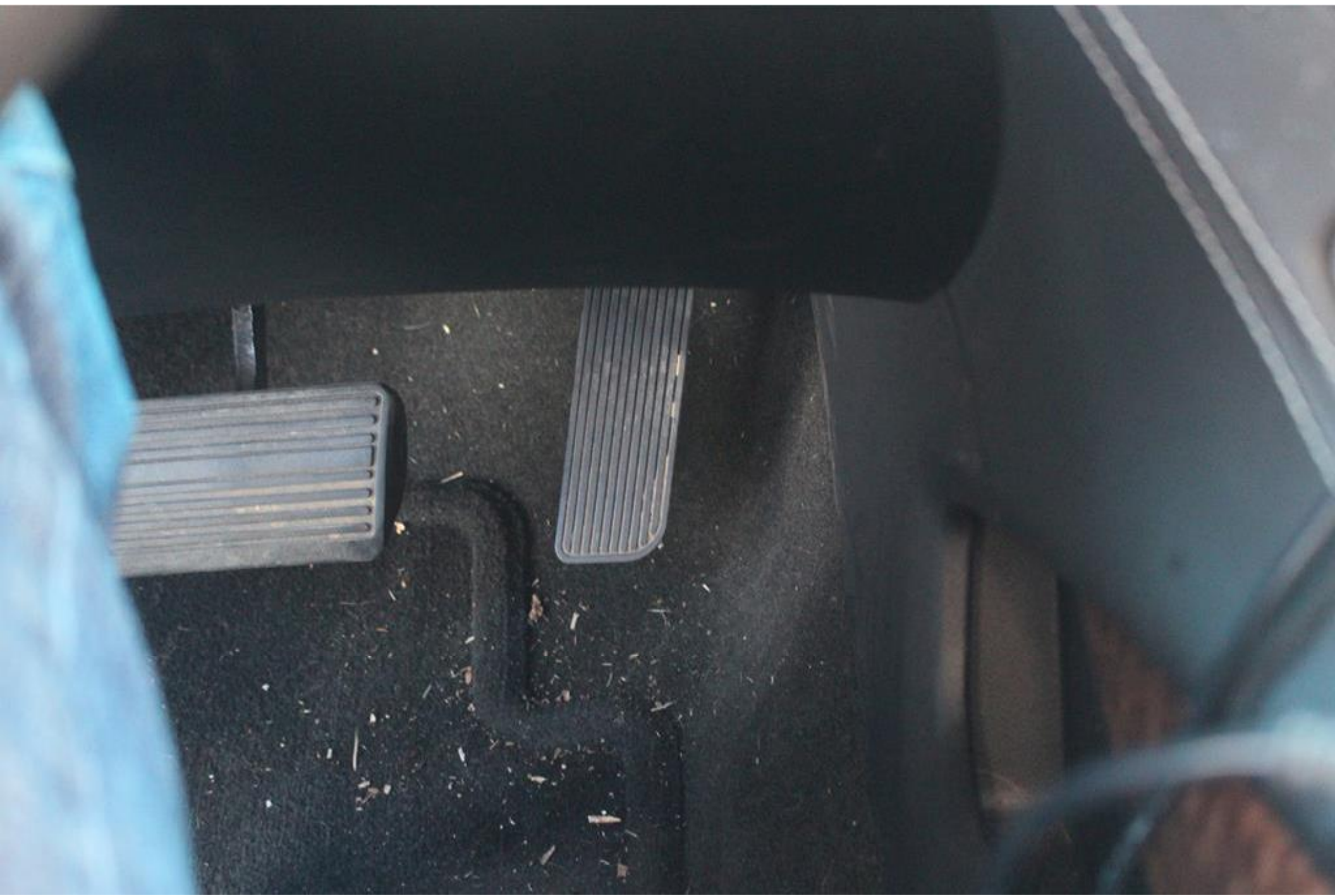
Home

Vehicle Menu

GD2 2 v20.0.18400 GM Global v2018.4.0 VIN: 1GNSKCKC0GR [redacted] 2016 Chevrolet Tahoe, Module Diagnostics, Electronic Brake Control Module

MD [redacted]





Data Display

Diagnostic Data Display Graphical Data Display Live Graph DTC Display

TAC Data



Parameter Name	Value	Unit	Component
Reduced Engine Power	Inactive		Engine Control Module
Accelerator Pedal Position	0 %		Engine Control Module
APP Sensors	0 %		Engine Control Module
Desired Throttle Position	13 %		Engine Control Module
Throttle Position	30 %		Engine Control Module
APP Sensor 1 and 2	Agree		Engine Control Module
Throttle Position Sensors 1 and 2	Agree		Engine Control Module
APP Sensor 1	1.00	V	Engine Control Module
APP Sensor 2	0.49	V	Engine Control Module
APP Sensor 1 Position	0 %		Engine Control Module
APP Sensor 2 Position	0 %		Engine Control Module
APP Sensor 1 Learned Released Position	1.00	V	Engine Control Module
APP Sensor 2 Learned Released Position	0.49	V	Engine Control Module
APP Sensor 1 Learned Applied Position	78 %		Engine Control Module
APP Sensor 2 Learned Applied Position	78 %		Engine Control Module
Throttle Position Sensor 1	3.39	V	Engine Control Module
Throttle Position Sensor 2	1.61	V	Engine Control Module
Throttle Position Sensor 1 Position	30 %		Engine Control Module
Throttle Position Sensor 2 Position	30 %		Engine Control Module

Back

Contact Us

Home

Vehicle Menu





Data Display

Create Report

Diagnostic Data Display Graphical Data Display Line Graph DTC Display

TAC Data



Parameter Name	Value	Unit	Component
Reduced Engine Power	Inactive		Engine Control Module
Accelerator Pedal Position	100	%	Engine Control Module
APP Sensors	99	%	Engine Control Module
Desired Throttle Position	29	%	Engine Control Module
Throttle Position	Agree		Engine Control Module
APP Sensor 1 and 2	Agree		Engine Control Module
Throttle Position Sensors 1 and 2	4.25	V	Engine Control Module
APP Sensor 1	2.14	V	Engine Control Module
APP Sensor 2	99	%	Engine Control Module
APP Sensor 1 Position	99	%	Engine Control Module
APP Sensor 2 Position	1.00	V	Engine Control Module
APP Sensor 1 Learned Released Position	0.49	V	Engine Control Module
APP Sensor 2 Learned Released Position	78	%	Engine Control Module
APP Sensor 1 Learned Applied Position	78	%	Engine Control Module
APP Sensor 2 Learned Applied Position	3.43	V	Engine Control Module
Throttle Position Sensor 1	1.57	V	Engine Control Module
Throttle Position Sensor 2	29	%	Engine Control Module
Throttle Position Sensor 1 Position	29	%	Engine Control Module
Throttle Position Sensor 2 Position	0.49	V	Engine Control Module

Back

Contact Us

Home

Vehicle Menu

GDS 2 v20.0.18400 GM Global v2018.4.0 VIN: 1GNSKCKC2GR [REDACTED] 2016, Chevrolet, Tahoe, Module Diagnostics, Engine Control Module

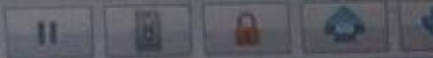




Data Display

Diagnostic Data Display | Graphical Data Display | Line Graph | OTC Display

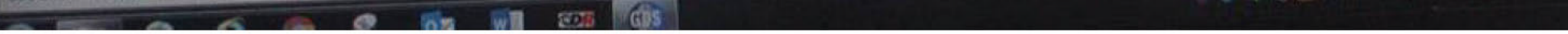
TAG Data



Parameter Name	Value	Unit	Control Module
Reduced Engine Power	Inactive		Engine Control Module
Accelerator Pedal Position	0 %		Engine Control Module
APP Sensors	13 %		Engine Control Module
Desired Throttle Position	30 %		Engine Control Module
Throttle Position	Agree		Engine Control Module
APP Sensor 1 and 2	Agree		Engine Control Module
Throttle Position Sensors 1 and 2	1.00 V	V	Engine Control Module
APP Sensor 1	0.49 V	V	Engine Control Module
APP Sensor 2	0 %		Engine Control Module
APP Sensor 1 Position	0 %		Engine Control Module
APP Sensor 2 Position	1.00 V	V	Engine Control Module
APP Sensor 1 Learned Released Position	0.49 V	V	Engine Control Module
APP Sensor 2 Learned Released Position	78 %		Engine Control Module
APP Sensor 1 Learned Applied Position	78 %		Engine Control Module
APP Sensor 2 Learned Applied Position	3.39 V	V	Engine Control Module
Throttle Position Sensor 1	1.61 V	V	Engine Control Module
Throttle Position Sensor 2	30 %		Engine Control Module
Throttle Position Sensor 1 Position	30 %		Engine Control Module
Throttle Position Sensor 2 Position	0.25 V	V	Engine Control Module

Back

Contact Us





Data Display

Diagnostic Data Display | Graphical Data Display | Live Graph | DTC Display

TAC Data



Parameter Name	Value	Unit	Control Module
TAC Motor Command	16	%	Engine Control Module
Cruise Control	Disabled		Engine Control Module
Brake Pedal Position Circuit Signal	Released		Engine Control Module
Brake Pedal Position Sensor Signal	Released		Engine Control Module
Brake Pedal Position Sensor	0	%	Engine Control Module
Engine Speed	564	RPM	Engine Control Module
Desired Idle Speed	544	RPM	Engine Control Module
ECT Sensor	88	°C	Engine Control Module
IAT Sensor 1	50	°C	Engine Control Module
Calculated Air Flow	4.68	g/s	Engine Control Module
MAF Sensor	4.59	g/s	Engine Control Module
MAP Sensor	31.0	kPa	Engine Control Module
Intake Manifold Pressure	31	kPa	Engine Control Module
Engine Load	14.5	%	Engine Control Module
Ignition 1 Signal	14.69	V	Engine Control Module
Ignition Accessory Signal	On		Engine Control Module
Engine Controls Ignition Relay Command	On		Engine Control Module
Engine Controls Ignition Relay Feedback Signal	14.5	V	Engine Control Module
Engine Controls Ignition Relay Control Circuit Low Voltage Test Status	Not Run		Engine Control Module



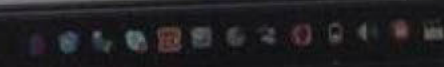
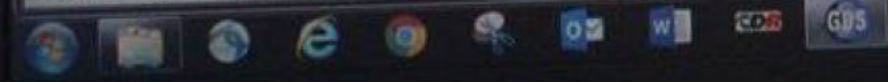
Contact Us



Vehicle Menu

MO

GDS 2 v20.0.18400 | GM Global v2018.4.0 | VIN: 1GN5KCKC9GR... | 2016 Chevrolet Tahoe Module Diagnostics, Engine Control Module





Data Display

Diagn Report

Diagnostic Data Display | Graphical Data Display | Live Graph | DTC Display

TAC Data



Parameter Name	Value	Unit	Control
TAC Motor Command	25	%	Engine Control Module
Cruise Control	Disabled		Engine Control Module
Brake Pedal Position Circuit Signal	Applied		Engine Control Module
Brake Pedal Position Sensor Signal	Applied		Engine Control Module
Brake Pedal Position Sensor	72	%	Engine Control Module
Engine Speed	553	RPM	Engine Control Module
Desired Idle Speed	544	RPM	Engine Control Module
ECT Sensor	89	°C	Engine Control Module
IAT Sensor 1	49	°C	Engine Control Module
Calculated Air Flow	4.78	g/s	Engine Control Module
MAF Sensor	4.72	g/s	Engine Control Module
MAP Sensor	32.0	kPa	Engine Control Module
Intake Manifold Pressure	32	kPa	Engine Control Module
Engine Load	14.9	%	Engine Control Module
Ignition 1 Signal	14.87	V	Engine Control Module
Ignition Accessory Signal	On		Engine Control Module
Engine Controls Ignition Relay Command	On		Engine Control Module
Engine Controls Ignition Relay Feedback Signal	14.5	V	Engine Control Module
Engine Controls Ignition Relay Control Circuit Low Voltage Test Status	Not Run		Engine Control Module
Engine Controls Ignition Relay Control Circuit Over Voltage Test Status	Not Run		Engine Control Module

Back

Contact Us

Home

Vehicle Menu



Data Display

Create Report Add

Diagnostic Data Display Graphical Data Display Line Graph DTO Display

TAC Data



Parameter Name	Value	Unit	Control Module
TAC Motor Command	25	%	Engine Control Module
Cruise Control	Disabled		Engine Control Module
Brake Pedal Position Circuit Signal	Released		Engine Control Module
Brake Pedal Position Sensor Signal	Released		Engine Control Module
Brake Pedal Position Sensor	0	%	Engine Control Module
Engine Speed	562	RPM	Engine Control Module
Desired Idle Speed	544	RPM	Engine Control Module
ECT Sensor	89	°C	Engine Control Module
IAT Sensor 1	49	°C	Engine Control Module
Calculated Air Flow	4.73	g/s	Engine Control Module
MAF Sensor	4.41	g/s	Engine Control Module
MAP Sensor	31.0	kPa	Engine Control Module
Intake Manifold Pressure	31	kPa	Engine Control Module
Engine Load	14.1	%	Engine Control Module
Ignition 1 Signal	14.69	V	Engine Control Module
Ignition Accessory Signal	On		Engine Control Module
Engine Controls Ignition Relay Command	On		Engine Control Module
Engine Controls Ignition Relay Feedback Signal	14.5	V	Engine Control Module
Engine Controls Ignition Relay Control Circuit Low Voltage Test Status	Not Run		Engine Control Module

Back

Contact Us



Vehicle Menu

GM Global v2018 4.0 VIN: 1GNSKCK03CR [redacted] 2016 Chevrolet Tahoe Module Diagnostics, Engine Control Module





Data Display

Create Report

App Store

Diagnostic Data Display Graphical Data Display Line Graph

Chassis Control Data



Parameter Name	Value	Unit	Control Module
Automatic Transmission Manual Shift Switch	On		Body Control Module
Brake Pedal Applied	Inactive		Body Control Module
Brake Pedal Initial Travel Position Achieved	No		Body Control Module
Brake Pedal Pulled Up from Released Position	No		Body Control Module
Brake Pedal Position Sensor High Voltage During Learn	No		Body Control Module
Brake Pedal Position Sensor Learn	No		Body Control Module
Brake Pedal Position Sensor Learned Released Position	Yes		Body Control Module
Brake Pedal Position Sensor Learned Released Position	1.13	V	Body Control Module
Brake Pedal Position Sensor Learned Released Position	45	%	Body Control Module
Brake Pedal Position Sensor Learned Released Position	No		Body Control Module
Brake Pedal Position Sensor Low Voltage During Learn	No		Body Control Module
Brake Pedal Position Sensor Move During Learn	1.22	V	Body Control Module
Brake Pedal Position Sensor	5.02	V	Body Control Module
Brake Pedal Position Sensor Reference	0.08	V	Body Control Module
Calculated Brake Pedal Position	2	%	Body Control Module
Calculated Brake Pedal Position	Inactive		Body Control Module
Brake Transmission Shift Interlock Solenoid Actuator Command	Idle		Body Control Module
Cruise Control Switch 2	Inactive		Body Control Module
Cruise Control Switch Status	On		Body Control Module
In Park Switch Status	Released		Body Control Module

Back

Contact Us

Home

Vehicle Menu

MO

GDS 2 v 20.0.18400 GM Global v2018.4.0 VIN: 1GNSKCKC0GR [redacted] 2016 Chevrolet Tahoe, Module Diagnostics, Body Control Module





Data Display

Diagnostic Data Display Graphical Data Display Line Graph

Create Report

Chassis Control Data



Parameter Name	Value	Unit	Control Module
Automatic Transmission Manual Shift Switch	On		Body Control Module
Brake Pedal Applied	Active		Body Control Module
Brake Pedal Initial Travel Position Achieved	Yes		Body Control Module
Brake Pedal Pulled Up from Released Position	No		Body Control Module
Brake Pedal Position Sensor High Voltage During Learn	No		Body Control Module
Brake Pedal Position Sensor Learn	No		Body Control Module
Brake Pedal Position Sensor Learned Released Position	Yes		Body Control Module
Brake Pedal Position Sensor Learned Released Position	1.13	V	Body Control Module
Brake Pedal Position Sensor Learned Released Position	45	%	Body Control Module
Brake Pedal Position Sensor Low Voltage During Learn	No		Body Control Module
Brake Pedal Position Sensor Move During Learn	No		Body Control Module
Brake Pedal Position Sensor	2.62	V	Body Control Module
Brake Pedal Position Sensor Reference	5.03	V	Body Control Module
Calculated Brake Pedal Position	1.50	V	Body Control Module
Calculated Brake Pedal Position	30	%	Body Control Module
Brake Transmission Shift Interlock Solenoid Actuator Command	Inactive		Body Control Module
Cruise Control Switch 2	Idle		Body Control Module
Cruise Control Switch Status	Inactive		Body Control Module
In Park Switch Status	On		Body Control Module

Back

Contact Us

Home

Vehicle Info



Data Display

Create Report

Diagnostic Data Display Graphical Data Display Line Graph

Chassis Control Data



Parameter Name	Value	Unit	Control Module
Automatic Transmission Manual Shift Switch	On		Body Control Module
Brake Pedal Applied	Inactive		Body Control Module
Brake Pedal Initial Travel Position Achieved	No		Body Control Module
Brake Pedal Pulled Up from Released Position	No		Body Control Module
Brake Pedal Position Sensor High Voltage During Learn	No		Body Control Module
Brake Pedal Position Sensor Learn	No		Body Control Module
Brake Pedal Position Sensor Learned Released Position	Yes		Body Control Module
Brake Pedal Position Sensor Learned Released Position	1.13	V	Body Control Module
Brake Pedal Position Sensor Learned Released Position	45	%	Body Control Module
Brake Pedal Position Sensor Low Voltage During Learn	No		Body Control Module
Brake Pedal Position Sensor Move During Learn	No		Body Control Module
Brake Pedal Position Sensor	1.22	V	Body Control Module
Brake Pedal Position Sensor Reference	5.03	V	Body Control Module
Calculated Brake Pedal Position	0.11	V	Body Control Module
Calculated Brake Pedal Position	2	%	Body Control Module
Brake Transmission Shift Interlock Solenoid Actuator Command	Inactive		Body Control Module
Cruise Control Switch 2	Idle		Body Control Module
Cruise Control Switch Status	Inactive		Body Control Module
In Park Switch Status	On		Body Control Module

Back

Contact Us

Home

Vehicle Menu

GDS 2 v.20.0 18400 GM Global v2018.4.0 VIN: 1GNSKCKC0G [REDACTED] 2016 Chevrolet Tahoe Module Diagnostics Body Control Module

MO 22





Data Display

[Create Report](#)

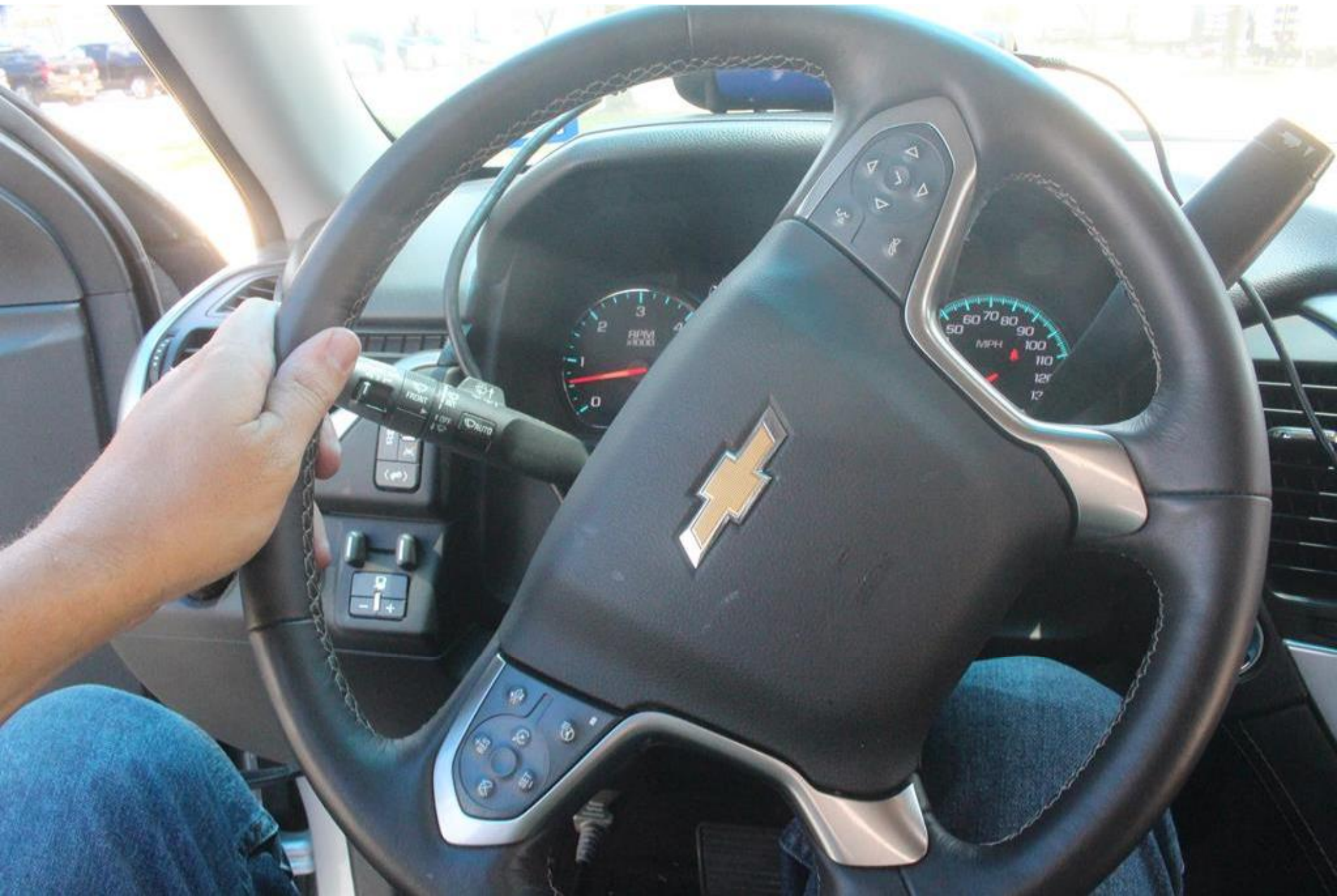
Diagnostic Data Display Graphical Data Display Line Graph

Data Display



Parameter Name	Value	Unit	Component
Ignition Cycle Counter	7574		Power Steering Control M
Calculated System Temperature	53	°C	Power Steering Control M
Steering Wheel Angle	2	°	Power Steering Control M
Steering Input Torque	-0	N·m	Power Steering Control
Power Steering Motor Overload Protection Counter	0	Counts	Power Steering Control
Power Steering Control Module SPS Calibration Status	Complete		Power Steering Control
Power Steering Control Module Center Procedure	Complete		Power Steering Control
Engine Speed	546	RPM	Power Steering Control
Vehicle Speed	0	km/h	Power Steering Control
Motor Feedback Current	0.0	A	Power Steering Control
Delivered Torque	257	N·m	Power Steering Control
Power Mode	Run		Power Steering Control
Battery Voltage	14.3	V	Power Steering Control
Engine is Running	Yes		Power Steering Control

[Back](#)[Contact Us](#)[Home](#)[Vehicle Menu](#)



Data Display

Print Report

Diagnostic Data Display Graphical Data Display Live Graph

Data Display



Parameter Name	Value	Unit	
Ignition Cycle Counter	7874		Power Steering C
Calculated System Temperature	53	°C	Power Steering C
Steering Wheel Angle	80	°	Power Steering C
Steering Input Torque	2	N m	Power Steering C
Power Steering Motor Overload Protection Counter	0	Counts	Power Steering C
Power Steering Control Module SPS Calibration Status	Complete		Power Steering C
Power Steering Control Module Center Procedure	Complete		Power Steering C
Engine Speed	548	RPM	Power Steering C
Vehicle Speed	0	km/h	Power Steering C
Motor Feedback Current	54.0	A	Power Steering C
Delivered Torque	254	N m	Power Steering C
Power Mode	Run		Power Steering C
Battery Voltage	14.2	V	Power Steering C
Engine is Running	Yes		Power Steering C

Back

Contact Us

Home

Vehicle Menu

GDS 2 v.20.0.16400

GM Global v2016.4.0

VIN: 1GN5KCKC0GR

2016 Chevrolet Tahoe, Module Diagnostics, Power Steering Control Module





xl Stars

CHI-DET-UPV

Data Display

Diagnostic Data Display | Graphical Data Display | Live Graph

Data Display



Parameter Name	Value	Unit	Control Module
Ignition Cycle Counter	7874		Power Steering Control Module
Calculated System Temperature	53	°C	Power Steering Control Module
Steering Wheel Angle	-5	°	Power Steering Control Module
Steering Input Torque	-0	N m	Power Steering Control Module
Power Steering Motor Overload Protection Counter	0	Counts	Power Steering Control Module
Power Steering Control Module SPS Calibration Status	Complete		Power Steering Control Module
Power Steering Control Module Center Procedure	Complete		Power Steering Control Module
Engine Speed	544	RPM	Power Steering Control Module
Vehicle Speed	0	km/h	Power Steering Control Module
Motor Feedback Current	0.5	A	Power Steering Control Module
Delivered Torque	257	N m	Power Steering Control Module
Power Mode	Run		Power Steering Control Module
Battery Voltage	14.3	V	Power Steering Control Module
Engine is Running	Yes		Power Steering Control Module

Back

Contact Us

Home

Vehicle Menu



xL Stars

Data Display

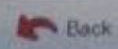
Create Report Print

Diagnostic Data Display Graphical Data Display Live Graph

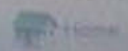
Data Display



Parameter Name	Value	Unit	Control Module
Ignition Cycle Counter	7874		Power Steering Control Module
Calculated System Temperature	53	°C	Power Steering Control Module
Steering Wheel Angle	-92	°	Power Steering Control Module
Steering Input Torque	2	N·m	Power Steering Control Module
Power Steering Motor Overload Protection Counter	0	Counts	Power Steering Control Module
Power Steering Control Module SPS Calibration Status	Complete		Power Steering Control Module
Power Steering Control Module Center Procedure	Complete		Power Steering Control Module
Engine Speed	547	RPM	Power Steering Control Module
Vehicle Speed	0	km/h	Power Steering Control Module
Motor Feedback Current	47.5	A	Power Steering Control Module
Delivered Torque	2	N·m	Power Steering Control Module
Power Mode	Run		Power Steering Control Module
Battery Voltage	14.2	V	Power Steering Control Module
Engine is Running	Yes		Power Steering Control Module



Contact Us



Vehicle Menu

MD



Data Display

Create Report

Diagnostic Data Display Graphical Data Display Line Graph

Data Display



Parameter Name	Value	Unit	Control Mod
Ignition Cycle Counter	7674		Power Steering Control Module
Calculated System Temperature	53	°C	Power Steering Control Module
Steering Wheel Angle	-3	°	Power Steering Control Module
Steering Input Torque	-6	N·m	Power Steering Control Module
Power Steering Motor Overload Protection Counter	0	Counts	Power Steering Control Module
Power Steering Control Module SPS Calibration Status	Complete		Power Steering Control Module
Power Steering Control Module Center Procedure	Complete		Power Steering Control Module
Engine Speed	553	RPM	Power Steering Control Module
Vehicle Speed	0	km/h	Power Steering Control Module
Motor Feedback Current	0.0	A	Power Steering Control Module
Delivered Torque	0	N·m	Power Steering Control Module
Power Mode	Run		Power Steering Control Module
Battery Voltage	14.3	V	Power Steering Control Module
Engine is Running	Yes		Power Steering Control Module

Back

Contact Us

Home

Vehicle Menu

MD: 221



Data Display

Create Report

Add Books

Diagnostic Data Display Graphical Data Display Line Graph

SOM Data



Parameter Name	Value	Unit	Control Module
Air Bag Malfunction Indicator	Off		Inflatable Restraint Sensing and Diagnostic Module
Driver Seat Belt Status	Unbuckled		Inflatable Restraint Sensing and Diagnostic Module
Driver Seat Belt Reminder Indicator	On		Inflatable Restraint Sensing and Diagnostic Module
Driver Seat Position Sensor Enable Status	Enabled		Inflatable Restraint Sensing and Diagnostic Module
Driver Seat Position Sensor	Rearward		Inflatable Restraint Sensing and Diagnostic Module
Passenger Seat Belt Status	Unbuckled		Inflatable Restraint Sensing and Diagnostic Module
Passenger Seat Belt Reminder Indicator	Off		Inflatable Restraint Sensing and Diagnostic Module
Passenger Seat Position Sensor Enable Status	Disabled		Inflatable Restraint Sensing and Diagnostic Module
Passenger Seat Position Sensor	Not Equipped		Inflatable Restraint Sensing and Diagnostic Module
Passenger Air Bag Status	Disabled		Inflatable Restraint Sensing and Diagnostic Module
Passenger Air Bag Disable Switch Enable Status	Disabled		Inflatable Restraint Sensing and Diagnostic Module
Passenger Air Bag Disable Switch	Off		Inflatable Restraint Sensing and Diagnostic Module
Passenger Air Bag On Indicator	Off		Inflatable Restraint Sensing and Diagnostic Module
Passenger Air Bag Off Indicator	On		Inflatable Restraint Sensing and Diagnostic Module
Passenger Presence System Enable Status	Enabled		Inflatable Restraint Sensing and Diagnostic Module
Passenger Presence Module Seat Occupancy Status	Empty Seat		Inflatable Restraint Sensing and Diagnostic Module
Passenger Presence Sensor Enable Status	Disabled		Inflatable Restraint Sensing and Diagnostic Module
Passenger Presence Sensor Seat Occupancy Status	Empty Seat		Inflatable Restraint Sensing and Diagnostic Module
Passenger Classification	Undefined		Inflatable Restraint Sensing and Diagnostic Module

Back

Contact Us

©2016 GM Data v2016.4.0 VIN: 1GN5XCKC000

2016 Chevrolet Tahoe Module Diagnostics Inflatable Restraint Sensing and Diagnostic Module

163





Create Report

Data Display

Diagnostic Data Display Graphical Data Display Line Graph

SCM Data



Parameter Name	Value	Unit	Cont
Air Bag Malfunction Indicator	Off		Inflatable Restraint Sensing
Driver Seat Belt Status	Buckled		Inflatable Restraint Sensing
Driver Seat Belt Reminder Indicator	Off		Inflatable Restraint Sensing
Driver Seat Position Sensor Enable Status	Enabled		Inflatable Restraint Sensing
Driver Seat Position Sensor	Rearward		Inflatable Restraint Sensing
Passenger Seat Belt Status	Unbuckled		Inflatable Restraint Sensing
Passenger Seat Belt Reminder Indicator	Off		Inflatable Restraint Sensing
Passenger Seat Position Sensor Enable Status	Disabled		Inflatable Restraint Sensing
Passenger Seat Position Sensor	Not Equipped		Inflatable Restraint Sensing
Passenger Air Bag Status	Disabled		Inflatable Restraint Sensing
Passenger Air Bag Disable Switch Enable Status	Disabled		Inflatable Restraint Sensing
Passenger Air Bag Disable Switch	Off		Inflatable Restraint Sensing
Passenger Air Bag On Indicator	Off		Inflatable Restraint Sensing
Passenger Air Bag Off Indicator	On		Inflatable Restraint Sensing
Passenger Presence System Enable Status	Enabled		Inflatable Restraint Sensing
Passenger Presence Module Seat Occupancy Status	Empty Seat		Inflatable Restraint Sensing
Passenger Presence Sensor Enable Status	Disabled		Inflatable Restraint Sensing
Passenger Presence Sensor Seat Occupancy Status	Empty Seat		Inflatable Restraint Sensing
Passenger Classification	Undefined		Inflatable Restraint Sensing

Back

Contact Us

GM 2.1.20.0 (M40) GM Corsa +2013.4.0 VIN: 1GNSK0K09P [REDACTED] 2018 Chevrolet Tahoe Module Diagnostics, Inflatable Restraint Sensing and Diagnostic Module





Data Display

Create Report

Add Comments

Diagnostic Data Display Graphical Data Display (Line Graph)

SDM Data



Parameter Name	Value	Unit	Control Module
Air Bag Malfunction Indicator	Off		Inflatable Restraint Sensing and Diagnostic Module
Driver Seat Belt Status	Unbuckled		Inflatable Restraint Sensing and Diagnostic Module
Driver Seat Belt Reminder Indicator	Flashing		Inflatable Restraint Sensing and Diagnostic Module
Driver Seat Position Sensor Enable Status	Enabled		Inflatable Restraint Sensing and Diagnostic Module
Driver Seat Position Sensor	Rearward		Inflatable Restraint Sensing and Diagnostic Module
Passenger Seat Belt Status	Unbuckled		Inflatable Restraint Sensing and Diagnostic Module
Passenger Seat Belt Reminder Indicator	Off		Inflatable Restraint Sensing and Diagnostic Module
Passenger Seat Position Sensor Enable Status	Disabled		Inflatable Restraint Sensing and Diagnostic Module
Passenger Seat Position Sensor	Not Equipped		Inflatable Restraint Sensing and Diagnostic Module
Passenger Air Bag Status	Disabled		Inflatable Restraint Sensing and Diagnostic Module
Passenger Air Bag Disable Switch Enable Status	Disabled		Inflatable Restraint Sensing and Diagnostic Module
Passenger Air Bag Disable Switch	Off		Inflatable Restraint Sensing and Diagnostic Module
Passenger Air Bag On Indicator	Off		Inflatable Restraint Sensing and Diagnostic Module
Passenger Air Bag Off Indicator	On		Inflatable Restraint Sensing and Diagnostic Module
Passenger Presence System Enable Status	Enabled		Inflatable Restraint Sensing and Diagnostic Module
Passenger Presence Module Seat Occupancy Status	Empty Seat		Inflatable Restraint Sensing and Diagnostic Module
Passenger Presence Sensor Enable Status	Disabled		Inflatable Restraint Sensing and Diagnostic Module
Passenger Presence Sensor Seat Occupancy Status	Empty Seat		Inflatable Restraint Sensing and Diagnostic Module
Passenger Classification	Undefined		Inflatable Restraint Sensing and Diagnostic Module

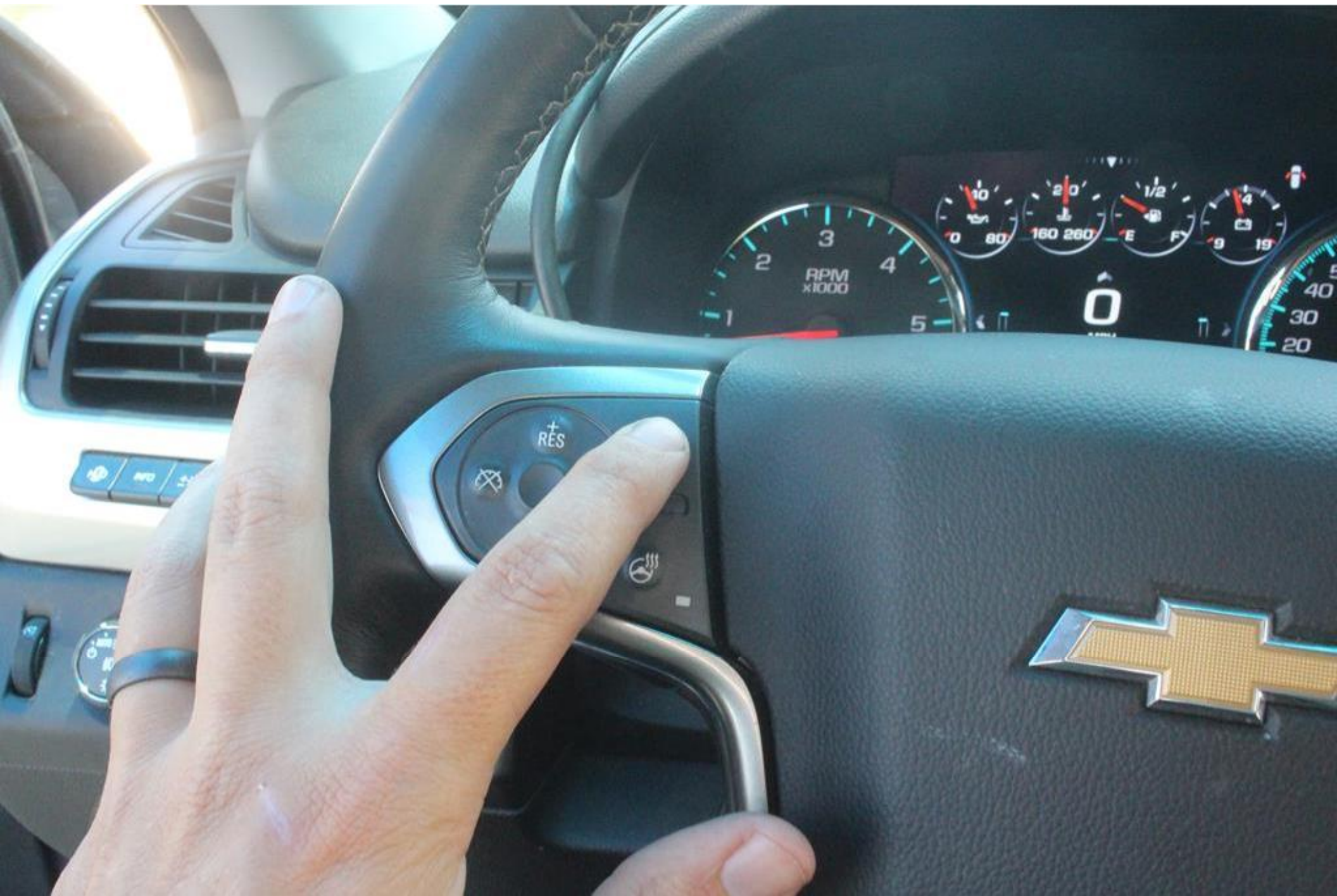
Back

Contact Us

©2018 Chevrolet Tahoe Module Diagnostics Inflatable Restraint Sensing and Diagnostic Module









Collision Alert



PRNDM



0 MPH

22313 mi

The central display shows a large white '0' for the current speed in MPH. Below it, the odometer reading '22313 mi' is shown in white. There are small white arrows pointing up and down from the odometer.

PRNDM

The gear position indicator shows 'PRNDM' in white text, indicating the current gear selection.



