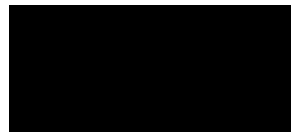


PE18-012

GM

3-27-2019

Q3





Global Diagnostic System 2

Freeze Frame/Failure Records

Overview

Vehicle Identification Number (VIN) 1GCVKSEJ7EZ [REDACTED]
 Report Creation Date 2017-10-04 14:37:28 EDT

Vehicle Configuration Property

Make Chevrolet
 Model Silverado
 Model Year 2014
 Engine Identifier 6.2L (L86)

System Information Property

VCI Serial Number MDI: [REDACTED]
 Vehicle Session Creation Date 2017-10-04 14:18:25
 Test Start Time 2017-10-04 14:37:15 EDT

Freeze Frame/Failure Records	DTC Display	Symptom Byte	DTC Description	Symptom Description
Freeze Frame	P0113	00	Intake Air Temperature (IAT) Sensor Circuit High Voltage	- - -

Parameter Name	Control Module	Value	Unit
Distance Since First Malfunction	Engine Control Module	0	km
Distance Since Last Malfunction	Engine Control Module	0	km
Ignition Cycles with Malfunction Since 1st Malfunction	Engine Control Module	1	Counts
Ignition Cycles without Malfunction Since Last Malfunction	Engine Control Module	0	Counts
Ignition Cycles without Completed Test Since 1st Malfunction	Engine Control Module	0	Counts
Warm-Ups Since DTC Cleared	Engine Control Module	0	Counts
Distance Since DTC Cleared	Engine Control Module	0	km

5V Reference 1	Engine Control Module	5.01	V
5V Reference 1 Circuit Status	Engine Control Module	OK	
5V Reference 2	Engine Control Module	5.01	V
5V Reference 2 Circuit Status	Engine Control Module	OK	
5V Reference 3	Engine Control Module	5.01	V
5V Reference 3 Circuit Status	Engine Control Module	OK	
5V Reference 4	Engine Control Module	5.01	V
5V Reference 4 Circuit Status	Engine Control Module	OK	
Air/Fuel Equivalence Ratio Command	Engine Control Module	0.31	
Accelerator Pedal Position	Engine Control Module	0	%
Ambient Air Temperature	Engine Control Module	30	°C
Ambient Humidity	Engine Control Module	0	%
BARO	Engine Control Module	0.0	kPa
BARO Sensor	Engine Control Module	0.00	V
Brake Pedal Position Circuit Signal	Engine Control Module	Released	
Brake Pedal Position Sensor Fully Released Learn Status	Engine Control Module	Complete	
Brake Pedal Position Sensor Signal	Engine Control Module	Released	
Calculated Catalyst Temperature Bank 1	Engine Control Module	107	°C
Calculated Catalyst Temperature Bank 2	Engine Control Module	107	°C
Crank Request Signal	Engine Control Module	No	
Cylinder 1 Deactivation Solenoid Valve Command	Engine Control Module	Off	
Cylinder 4 Deactivation Solenoid Valve Command	Engine Control Module	Off	
Cylinder 6 Deactivation Solenoid Valve Command	Engine Control Module	Off	
Cylinder 7 Deactivation Solenoid Valve Command	Engine Control Module	Off	
Cylinder Deactivation Performance Test	Engine Control	OK	

	Module		
Desired Idle Speed	Engine Control Module	848	RPM
Desired Throttle Position	Engine Control Module	18	%
Driver Requested Axle Torque	Engine Control Module	1973	N·m
ECT Sensor	Engine Control Module	28	°C
Engine Controls Ignition Relay Command	Engine Control Module	Off	
Engine Controls Ignition Relay Control Circuit High Voltage Test Status	Engine Control Module	Not Run	
Engine Controls Ignition Relay Control Circuit Low Voltage Test Status	Engine Control Module	OK	
Engine Controls Ignition Relay Control Circuit Open Test Status	Engine Control Module	OK	
Engine Controls Ignition Relay Feedback Signal	Engine Control Module	0.3	V
Engine Load	Engine Control Module	0.0	%
Engine Oil Absolute Pressure Sensor	Engine Control Module	92	kPa
Engine Run Time	Engine Control Module	00:00:00	
Engine Speed	Engine Control Module	0	RPM
EVAP Purge Solenoid Valve Command	Engine Control Module	0	%
Extended Travel Brake Pedal Position Signal	Engine Control Module	Released	
Extended Travel Brake Pedal Switch	Engine Control Module	Released	
Fuel Alcohol Content	Engine Control Module	0	%
Fuel Control Loop Status	Engine Control Module	Open	
Fuel Pressure Sensor	Engine Control Module	3	kPa
Fuel Rail Pressure Sensor	Engine Control Module	0.0	MPa
Fuel Rail Pressure Sensor 1	Engine Control Module	0.0	MPa
Fuel Tank Pressure Sensor	Engine Control Module	0.01	in. H2O
HO2S Bank 1 Sensor 1	Engine Control Module	1.89	V
HO2S Bank 2 Sensor 1	Engine Control Module	1.90	V

IAT Sensor 1	Engine Control Module	-40	°C
IAT Sensor 2	Engine Control Module	10	Hz
IAT Sensor 2	Engine Control Module	-40	°C
Ignition 1 Signal	Engine Control Module	0.00	V
Ignition Accessory Signal	Engine Control Module	On	
Ignition Timing	Engine Control Module	0.0	°
Intake Air Humidity Sensor	Engine Control Module	0	%
Long Term Fuel Trim Bank 1	Engine Control Module	0	%
Long Term Fuel Trim Bank 2	Engine Control Module	0	%
MAF Sensor	Engine Control Module	0.00	g/s
MAF Sensor	Engine Control Module	0	Hz
MAF Sensor Supply Voltage Command	Engine Control Module	Off	
MAF Sensor Supply Voltage Control Circuit High Voltage Test Status	Engine Control Module	OK	
MAF Sensor Supply Voltage Control Circuit Low Voltage Test Status	Engine Control Module	OK	
MAF Sensor Supply Voltage Control Circuit Open Test Status	Engine Control Module	OK	
MAP Performance Test 1	Engine Control Module	OK	
MAP Performance Test 2	Engine Control Module	OK	
MAP Sensor	Engine Control Module	98.0	kPa
MAP Sensor	Engine Control Module	3.86	V
Output Shaft Speed Sensor	Engine Control Module	0	RPM
Park/Neutral Position Switch	Engine Control Module	Park/Neutral	
Power Mode	Engine Control Module	Off	
Remaining Fuel in Tank	Engine Control Module	2.4	%
Remote Vehicle Start Request Signal	Engine Control Module	Off	
Short Term Fuel Trim Bank 1	Engine Control	0	%

Parameter Name	Control Module	Value	Unit
Short Term Fuel Trim Bank 2	Engine Control Module	0	%
Specific Humidity	Engine Control Module	1.39	%
Starter Relay Command	Engine Control Module	Off	
Start-Up IAT	Engine Control Module	-40	°C
Start-Up IAT Sensor 1	Engine Control Module	-40	°C
TCC/Cruise Control Brake Pedal Switch	Engine Control Module	Released	
Throttle Position	Engine Control Module	30	%
Throttle Position Performance Test	Engine Control Module	OK	
Torque Delivered Signal	Engine Control Module	-47.50	N·m
Transmission Fluid Temperature	Engine Control Module	28	°C
Vehicle Speed Sensor	Engine Control Module	0	km/h

Freeze Frame/Failure Records	DTC Display	Symptom Byte	DTC Description	Symptom Description
------------------------------	-------------	--------------	-----------------	---------------------

Failure Record 1	P0097	00	Intake Air Temperature (IAT) Sensor 2 Circuit Low Voltage	---
------------------	-------	----	---	-----

Parameter Name	Control Module	Value	Unit
Distance Since First Malfunction	Engine Control Module	0	km
Distance Since Last Malfunction	Engine Control Module	0	km
Ignition Cycles with Malfunction Since 1st Malfunction	Engine Control Module	1	Counts
Ignition Cycles without Malfunction Since Last Malfunction	Engine Control Module	15	Counts
Ignition Cycles without Completed Test Since 1st Malfunction	Engine Control Module	0	Counts
Warm-Ups Since DTC Cleared	Engine Control Module	0	Counts
Distance Since DTC Cleared	Engine Control Module	0	km
5V Reference 1	Engine Control Module	5.01	V
5V Reference 1 Circuit Status	Engine Control Module	OK	
5V Reference 2	Engine Control	5.01	V

	Module		
5V Reference 2 Circuit Status	Engine Control Module	OK	
5V Reference 3	Engine Control Module	5.01	V
5V Reference 3 Circuit Status	Engine Control Module	OK	
5V Reference 4	Engine Control Module	5.01	V
5V Reference 4 Circuit Status	Engine Control Module	OK	
Air/Fuel Equivalence Ratio Command	Engine Control Module	0.31	
Accelerator Pedal Position	Engine Control Module	0	%
Ambient Air Temperature	Engine Control Module	30	°C
Ambient Humidity	Engine Control Module	0	%
BARO	Engine Control Module	0.0	kPa
BARO Sensor	Engine Control Module	0.00	V
Brake Pedal Position Circuit Signal	Engine Control Module	Released	
Brake Pedal Position Sensor Fully Released Learn Status	Engine Control Module	Complete	
Brake Pedal Position Sensor Signal	Engine Control Module	Released	
Calculated Catalyst Temperature Bank 1	Engine Control Module	106	°C
Calculated Catalyst Temperature Bank 2	Engine Control Module	106	°C
Crank Request Signal	Engine Control Module	No	
Cylinder 1 Deactivation Solenoid Valve Command	Engine Control Module	Off	
Cylinder 4 Deactivation Solenoid Valve Command	Engine Control Module	Off	
Cylinder 6 Deactivation Solenoid Valve Command	Engine Control Module	Off	
Cylinder 7 Deactivation Solenoid Valve Command	Engine Control Module	Off	
Cylinder Deactivation Performance Test	Engine Control Module	OK	
Desired Idle Speed	Engine Control Module	1200	RPM
Desired Throttle Position	Engine Control Module	30	%

Driver Requested Axle Torque	Engine Control Module	4213	N·m
ECT Sensor	Engine Control Module	28	°C
Engine Controls Ignition Relay Command	Engine Control Module	On	
Engine Controls Ignition Relay Control Circuit High Voltage Test Status	Engine Control Module	OK	
Engine Controls Ignition Relay Control Circuit Low Voltage Test Status	Engine Control Module	Not Run	
Engine Controls Ignition Relay Control Circuit Open Test Status	Engine Control Module	Not Run	
Engine Controls Ignition Relay Feedback Signal	Engine Control Module	18.5	V
Engine Load	Engine Control Module	0.0	%
Engine Oil Absolute Pressure Sensor	Engine Control Module	92	kPa
Engine Run Time	Engine Control Module	00:00:00	
Engine Speed	Engine Control Module	0	RPM
EVAP Purge Solenoid Valve Command	Engine Control Module	0	%
Extended Travel Brake Pedal Position Signal	Engine Control Module	Released	
Extended Travel Brake Pedal Switch	Engine Control Module	Released	
Fuel Alcohol Content	Engine Control Module	0	%
Fuel Control Loop Status	Engine Control Module	Open	
Fuel Pressure Sensor	Engine Control Module	3	kPa
Fuel Rail Pressure Sensor	Engine Control Module	0.0	MPa
Fuel Rail Pressure Sensor 1	Engine Control Module	0.0	MPa
Fuel Tank Pressure Sensor	Engine Control Module	-0.01	in. H2O
HO2S Bank 1 Sensor 1	Engine Control Module	1.89	V
HO2S Bank 2 Sensor 1	Engine Control Module	1.90	V
IAT Sensor 1	Engine Control Module	-40	°C
IAT Sensor 2	Engine Control Module	10	Hz
IAT Sensor 2	Engine Control	-40	°C

	Module		
Ignition 1 Signal	Engine Control Module	18.50	V
Ignition Accessory Signal	Engine Control Module	On	
Ignition Timing	Engine Control Module	0.0	°
Intake Air Humidity Sensor	Engine Control Module	0	%
Long Term Fuel Trim Bank 1	Engine Control Module	0	%
Long Term Fuel Trim Bank 2	Engine Control Module	0	%
MAF Sensor	Engine Control Module	0.00	g/s
MAF Sensor	Engine Control Module	0	Hz
MAF Sensor Supply Voltage Command	Engine Control Module	Off	
MAF Sensor Supply Voltage Control Circuit High Voltage Test Status	Engine Control Module	OK	
MAF Sensor Supply Voltage Control Circuit Low Voltage Test Status	Engine Control Module	OK	
MAF Sensor Supply Voltage Control Circuit Open Test Status	Engine Control Module	OK	
MAP Performance Test 1	Engine Control Module	OK	
MAP Performance Test 2	Engine Control Module	OK	
MAP Sensor	Engine Control Module	98.0	kPa
MAP Sensor	Engine Control Module	3.86	V
Output Shaft Speed Sensor	Engine Control Module	0	RPM
Park/Neutral Position Switch	Engine Control Module	Park/Neutral	
Power Mode	Engine Control Module	Off	
Remaining Fuel in Tank	Engine Control Module	2.0	%
Remote Vehicle Start Request Signal	Engine Control Module	Off	
Short Term Fuel Trim Bank 1	Engine Control Module	0	%
Short Term Fuel Trim Bank 2	Engine Control Module	0	%
Specific Humidity	Engine Control Module	1.39	%

Starter Relay Command	Engine Control Module	Off	
Start-Up IAT	Engine Control Module	-40	°C
Start-Up IAT Sensor 1	Engine Control Module	-40	°C
TCC/Cruise Control Brake Pedal Switch	Engine Control Module	Released	
Throttle Position	Engine Control Module	30	%
Throttle Position Performance Test	Engine Control Module	OK	
Torque Delivered Signal	Engine Control Module	-47.50	N·m
Transmission Fluid Temperature	Engine Control Module	28	°C
Vehicle Speed Sensor	Engine Control Module	0	km/h

Freeze Frame/Failure Records	DTC Display	Symptom Byte	DTC Description	Symptom Description	
Failure Record 2	P00F4	00	Intake Air Humidity Sensor Circuit Low Voltage	- - -	
Parameter Name			Control Module	Value	Unit
Distance Since First Malfunction			Engine Control Module	0	km
Distance Since Last Malfunction			Engine Control Module	0	km
Ignition Cycles with Malfunction Since 1st Malfunction			Engine Control Module	1	Counts
Ignition Cycles without Malfunction Since Last Malfunction			Engine Control Module	15	Counts
Ignition Cycles without Completed Test Since 1st Malfunction			Engine Control Module	0	Counts
Warm-Ups Since DTC Cleared			Engine Control Module	0	Counts
Distance Since DTC Cleared			Engine Control Module	0	km
5V Reference 1			Engine Control Module	5.01	V
5V Reference 1 Circuit Status			Engine Control Module	OK	
5V Reference 2			Engine Control Module	5.01	V
5V Reference 2 Circuit Status			Engine Control Module	OK	
5V Reference 3			Engine Control Module	5.01	V
5V Reference 3 Circuit Status			Engine Control	OK	

	Module		
5V Reference 4	Engine Control Module	5.01	V
5V Reference 4 Circuit Status	Engine Control Module	OK	
Air/Fuel Equivalence Ratio Command	Engine Control Module	0.31	
Accelerator Pedal Position	Engine Control Module	0	%
Ambient Air Temperature	Engine Control Module	30	°C
Ambient Humidity	Engine Control Module	0	%
BARO	Engine Control Module	0.0	kPa
BARO Sensor	Engine Control Module	0.00	V
Brake Pedal Position Circuit Signal	Engine Control Module	Released	
Brake Pedal Position Sensor Fully Released Learn Status	Engine Control Module	Complete	
Brake Pedal Position Sensor Signal	Engine Control Module	Released	
Calculated Catalyst Temperature Bank 1	Engine Control Module	106	°C
Calculated Catalyst Temperature Bank 2	Engine Control Module	106	°C
Crank Request Signal	Engine Control Module	No	
Cylinder 1 Deactivation Solenoid Valve Command	Engine Control Module	Off	
Cylinder 4 Deactivation Solenoid Valve Command	Engine Control Module	Off	
Cylinder 6 Deactivation Solenoid Valve Command	Engine Control Module	Off	
Cylinder 7 Deactivation Solenoid Valve Command	Engine Control Module	Off	
Cylinder Deactivation Performance Test	Engine Control Module	OK	
Desired Idle Speed	Engine Control Module	1200	RPM
Desired Throttle Position	Engine Control Module	30	%
Driver Requested Axle Torque	Engine Control Module	4213	N·m
ECT Sensor	Engine Control Module	28	°C
Engine Controls Ignition Relay Command	Engine Control Module	On	

Engine Controls Ignition Relay Control Circuit High Voltage Test Status	Engine Control Module	OK	
Engine Controls Ignition Relay Control Circuit Low Voltage Test Status	Engine Control Module	Not Run	
Engine Controls Ignition Relay Control Circuit Open Test Status	Engine Control Module	Not Run	
Engine Controls Ignition Relay Feedback Signal	Engine Control Module	18.5	V
Engine Load	Engine Control Module	0.0	%
Engine Oil Absolute Pressure Sensor	Engine Control Module	92	kPa
Engine Run Time	Engine Control Module	00:00:00	
Engine Speed	Engine Control Module	0	RPM
EVAP Purge Solenoid Valve Command	Engine Control Module	0	%
Extended Travel Brake Pedal Position Signal	Engine Control Module	Released	
Extended Travel Brake Pedal Switch	Engine Control Module	Released	
Fuel Alcohol Content	Engine Control Module	0	%
Fuel Control Loop Status	Engine Control Module	Open	
Fuel Pressure Sensor	Engine Control Module	3	kPa
Fuel Rail Pressure Sensor	Engine Control Module	0.0	MPa
Fuel Rail Pressure Sensor 1	Engine Control Module	0.0	MPa
Fuel Tank Pressure Sensor	Engine Control Module	-0.01	in. H2O
HO2S Bank 1 Sensor 1	Engine Control Module	1.89	V
HO2S Bank 2 Sensor 1	Engine Control Module	1.90	V
IAT Sensor 1	Engine Control Module	-40	°C
IAT Sensor 2	Engine Control Module	10	Hz
IAT Sensor 2	Engine Control Module	-40	°C
Ignition 1 Signal	Engine Control Module	18.53	V
Ignition Accessory Signal	Engine Control Module	On	
Ignition Timing	Engine Control	0.0	°

	Module		
Intake Air Humidity Sensor	Engine Control Module	0	%
Long Term Fuel Trim Bank 1	Engine Control Module	0	%
Long Term Fuel Trim Bank 2	Engine Control Module	0	%
MAF Sensor	Engine Control Module	0.00	g/s
MAF Sensor	Engine Control Module	0	Hz
MAF Sensor Supply Voltage Command	Engine Control Module	Off	
MAF Sensor Supply Voltage Control Circuit High Voltage Test Status	Engine Control Module	OK	
MAF Sensor Supply Voltage Control Circuit Low Voltage Test Status	Engine Control Module	OK	
MAF Sensor Supply Voltage Control Circuit Open Test Status	Engine Control Module	OK	
MAP Performance Test 1	Engine Control Module	OK	
MAP Performance Test 2	Engine Control Module	OK	
MAP Sensor	Engine Control Module	98.0	kPa
MAP Sensor	Engine Control Module	3.86	V
Output Shaft Speed Sensor	Engine Control Module	0	RPM
Park/Neutral Position Switch	Engine Control Module	Park/Neutral	
Power Mode	Engine Control Module	Off	
Remaining Fuel in Tank	Engine Control Module	2.0	%
Remote Vehicle Start Request Signal	Engine Control Module	Off	
Short Term Fuel Trim Bank 1	Engine Control Module	0	%
Short Term Fuel Trim Bank 2	Engine Control Module	0	%
Specific Humidity	Engine Control Module	1.39	%
Starter Relay Command	Engine Control Module	Off	
Start-Up IAT	Engine Control Module	-40	°C
Start-Up IAT Sensor 1	Engine Control Module	-40	°C

TCC/Cruise Control Brake Pedal Switch	Engine Control Module	Released	
Throttle Position	Engine Control Module	30	%
Throttle Position Performance Test	Engine Control Module	OK	
Torque Delivered Signal	Engine Control Module	-47.50	N·m
Transmission Fluid Temperature	Engine Control Module	28	°C
Vehicle Speed Sensor	Engine Control Module	0	km/h

Freeze Frame/Failure Records	DTC Display	Symptom Byte	DTC Description	Symptom Description
Failure Record 3	P0563	00	System Voltage High Voltage	- - -

Parameter Name	Control Module	Value	Unit
Distance Since First Malfunction	Engine Control Module	0	km
Distance Since Last Malfunction	Engine Control Module	0	km
Ignition Cycles with Malfunction Since 1st Malfunction	Engine Control Module	1	Counts
Ignition Cycles without Malfunction Since Last Malfunction	Engine Control Module	15	Counts
Ignition Cycles without Completed Test Since 1st Malfunction	Engine Control Module	0	Counts
Warm-Ups Since DTC Cleared	Engine Control Module	0	Counts
Distance Since DTC Cleared	Engine Control Module	0	km
5V Reference 1	Engine Control Module	5.01	V
5V Reference 1 Circuit Status	Engine Control Module	OK	
5V Reference 2	Engine Control Module	5.01	V
5V Reference 2 Circuit Status	Engine Control Module	OK	
5V Reference 3	Engine Control Module	5.01	V
5V Reference 3 Circuit Status	Engine Control Module	OK	
5V Reference 4	Engine Control Module	5.01	V
5V Reference 4 Circuit Status	Engine Control Module	OK	
Air/Fuel Equivalence Ratio Command	Engine Control	0.31	

	Module		
Accelerator Pedal Position	Engine Control Module	0	%
Ambient Air Temperature	Engine Control Module	30	°C
BARO	Engine Control Module	0.0	kPa
Brake Pedal Position Circuit Signal	Engine Control Module	Released	
Brake Pedal Position Sensor Fully Released Learn Status	Engine Control Module	Complete	
Brake Pedal Position Sensor Signal	Engine Control Module	Released	
Calculated Catalyst Temperature Bank 1	Engine Control Module	106	°C
Calculated Catalyst Temperature Bank 2	Engine Control Module	106	°C
Crank Request Signal	Engine Control Module	No	
Desired Idle Speed	Engine Control Module	1200	RPM
Desired Throttle Position	Engine Control Module	30	%
Driver Requested Axle Torque	Engine Control Module	4086	N·m
ECT Sensor	Engine Control Module	28	°C
Engine Controls Ignition Relay Command	Engine Control Module	On	
Engine Controls Ignition Relay Control Circuit High Voltage Test Status	Engine Control Module	OK	
Engine Controls Ignition Relay Control Circuit Low Voltage Test Status	Engine Control Module	Not Run	
Engine Controls Ignition Relay Control Circuit Open Test Status	Engine Control Module	Not Run	
Engine Controls Ignition Relay Feedback Signal	Engine Control Module	19.0	V
Engine Load	Engine Control Module	0.0	%
Engine Run Time	Engine Control Module	00:00:00	
Engine Speed	Engine Control Module	0	RPM
EVAP Purge Solenoid Valve Command	Engine Control Module	0	%
Extended Travel Brake Pedal Position Signal	Engine Control Module	Released	
Extended Travel Brake Pedal Switch	Engine Control Module	Released	

Fuel Alcohol Content	Engine Control Module	0	%
Fuel Control Loop Status	Engine Control Module	Open	
Fuel Pressure Sensor	Engine Control Module	3	kPa
Fuel Rail Pressure Sensor	Engine Control Module	0.0	MPa
Fuel Rail Pressure Sensor 1	Engine Control Module	0.0	MPa
Fuel Tank Pressure Sensor	Engine Control Module	-0.02	in. H2O
Generator F-Terminal Signal	Engine Control Module	0.0	%
Generator L-Terminal Circuit High Voltage Test Status	Engine Control Module	OK	
Generator L-Terminal Circuit Low Voltage Test Status	Engine Control Module	Malfunction	
Generator L-Terminal Circuit Open Test Status	Engine Control Module	Not Run	
Generator L-Terminal Command	Engine Control Module	60.0	%
Generator L-Terminal Signal Command	Engine Control Module	On	
IAT Sensor 1	Engine Control Module	-40	°C
Ignition 1 Signal	Engine Control Module	18.95	V
Ignition Accessory Signal	Engine Control Module	On	
Ignition Timing	Engine Control Module	0.0	°
Immobilizer Password Learn	Engine Control Module	Inactive	
Immobilizer Security Information Programmed	Engine Control Module	Yes	
Immobilizer System Status	Engine Control Module	Standby	
Immobilizer Valid Response Received Time	Engine Control Module	0	ms
Long Term Fuel Trim Bank 1	Engine Control Module	0	%
Long Term Fuel Trim Bank 2	Engine Control Module	0	%
MAF Sensor	Engine Control Module	0.00	g/s
MAP Sensor	Engine Control Module	98.0	kPa
Output Shaft Speed Sensor	Engine Control	0	RPM

Parameter Name	Control Module	Value	Unit
Park/Neutral Position Switch	Engine Control Module	Park/Neutral	
Power Mode	Engine Control Module	Off	
Remaining Fuel in Tank	Engine Control Module	2.0	%
Remote Vehicle Start Request Signal	Engine Control Module	Off	
Short Term Fuel Trim Bank 1	Engine Control Module	0	%
Short Term Fuel Trim Bank 2	Engine Control Module	0	%
Starter Relay Command	Engine Control Module	Off	
Starter Relay Control Circuit High Voltage Test Status	Engine Control Module	Not Run	
Starter Relay Control Circuit Low Voltage Test Status	Engine Control Module	Not Run	
Starter Relay Control Circuit Open Test Status	Engine Control Module	Not Run	
TCC/Cruise Control Brake Pedal Switch	Engine Control Module	Released	
Throttle Position	Engine Control Module	30	%
Torque Delivered Signal	Engine Control Module	-57.25	N·m
Transmission Fluid Temperature	Engine Control Module	28	°C
Vehicle Speed Sensor	Engine Control Module	0	km/h

Freeze Frame/Failure Records	DTC Display	Symptom Byte	DTC Description	Symptom Description
------------------------------	-------------	--------------	-----------------	---------------------

Failure Record 4	P2228	00	Barometric Pressure (BARO) Sensor Circuit Low Voltage	---
------------------	-------	----	---	-----

Parameter Name	Control Module	Value	Unit
Distance Since First Malfunction	Engine Control Module	0	km
Distance Since Last Malfunction	Engine Control Module	0	km
Ignition Cycles with Malfunction Since 1st Malfunction	Engine Control Module	2	Counts
Ignition Cycles without Malfunction Since Last Malfunction	Engine Control Module	14	Counts
Ignition Cycles without Completed Test Since 1st Malfunction	Engine Control Module	0	Counts
Warm-Ups Since DTC Cleared	Engine Control	0	Counts

	Module		
Distance Since DTC Cleared	Engine Control Module	0	km
5V Reference 1	Engine Control Module	5.01	V
5V Reference 1 Circuit Status	Engine Control Module	OK	
5V Reference 2	Engine Control Module	5.01	V
5V Reference 2 Circuit Status	Engine Control Module	OK	
5V Reference 3	Engine Control Module	5.01	V
5V Reference 3 Circuit Status	Engine Control Module	OK	
5V Reference 4	Engine Control Module	5.01	V
5V Reference 4 Circuit Status	Engine Control Module	OK	
Air/Fuel Equivalence Ratio Command	Engine Control Module	0.31	
Accelerator Pedal Position	Engine Control Module	0	%
Ambient Air Temperature	Engine Control Module	30	°C
Ambient Humidity	Engine Control Module	0	%
BARO	Engine Control Module	0.0	kPa
BARO Sensor	Engine Control Module	0.00	V
Brake Pedal Position Circuit Signal	Engine Control Module	Released	
Brake Pedal Position Sensor Fully Released Learn Status	Engine Control Module	Complete	
Brake Pedal Position Sensor Signal	Engine Control Module	Released	
Calculated Catalyst Temperature Bank 1	Engine Control Module	107	°C
Calculated Catalyst Temperature Bank 2	Engine Control Module	107	°C
Crank Request Signal	Engine Control Module	No	
Cylinder 1 Deactivation Solenoid Valve Command	Engine Control Module	Off	
Cylinder 4 Deactivation Solenoid Valve Command	Engine Control Module	Off	
Cylinder 6 Deactivation Solenoid Valve Command	Engine Control Module	Off	

Cylinder 7 Deactivation Solenoid Valve Command	Engine Control Module	Off	
Cylinder Deactivation Performance Test	Engine Control Module	OK	
Desired Idle Speed	Engine Control Module	848	RPM
Desired Throttle Position	Engine Control Module	19	%
Driver Requested Axle Torque	Engine Control Module	1973	N·m
ECT Sensor	Engine Control Module	28	°C
Engine Controls Ignition Relay Command	Engine Control Module	Off	
Engine Controls Ignition Relay Control Circuit High Voltage Test Status	Engine Control Module	Not Run	
Engine Controls Ignition Relay Control Circuit Low Voltage Test Status	Engine Control Module	OK	
Engine Controls Ignition Relay Control Circuit Open Test Status	Engine Control Module	OK	
Engine Controls Ignition Relay Feedback Signal	Engine Control Module	0.3	V
Engine Load	Engine Control Module	0.0	%
Engine Oil Absolute Pressure Sensor	Engine Control Module	92	kPa
Engine Run Time	Engine Control Module	00:00:00	
Engine Speed	Engine Control Module	0	RPM
EVAP Purge Solenoid Valve Command	Engine Control Module	0	%
Extended Travel Brake Pedal Position Signal	Engine Control Module	Released	
Extended Travel Brake Pedal Switch	Engine Control Module	Released	
Fuel Alcohol Content	Engine Control Module	0	%
Fuel Control Loop Status	Engine Control Module	Open	
Fuel Pressure Sensor	Engine Control Module	3	kPa
Fuel Rail Pressure Sensor	Engine Control Module	0.0	MPa
Fuel Rail Pressure Sensor 1	Engine Control Module	0.0	MPa
Fuel Tank Pressure Sensor	Engine Control Module	0.01	in. H ₂ O
HO ₂ S Bank 1 Sensor 1	Engine Control	1.89	V

	Module		
HO2S Bank 2 Sensor 1	Engine Control Module	1.90	V
IAT Sensor 1	Engine Control Module	-40	°C
IAT Sensor 2	Engine Control Module	10	Hz
IAT Sensor 2	Engine Control Module	-40	°C
Ignition 1 Signal	Engine Control Module	0.00	V
Ignition Accessory Signal	Engine Control Module	On	
Ignition Timing	Engine Control Module	0.0	°
Intake Air Humidity Sensor	Engine Control Module	0	%
Long Term Fuel Trim Bank 1	Engine Control Module	0	%
Long Term Fuel Trim Bank 2	Engine Control Module	0	%
MAF Sensor	Engine Control Module	0.00	g/s
MAF Sensor	Engine Control Module	0	Hz
MAF Sensor Supply Voltage Command	Engine Control Module	Off	
MAF Sensor Supply Voltage Control Circuit High Voltage Test Status	Engine Control Module	OK	
MAF Sensor Supply Voltage Control Circuit Low Voltage Test Status	Engine Control Module	OK	
MAF Sensor Supply Voltage Control Circuit Open Test Status	Engine Control Module	OK	
MAP Performance Test 1	Engine Control Module	OK	
MAP Performance Test 2	Engine Control Module	OK	
MAP Sensor	Engine Control Module	98.0	kPa
MAP Sensor	Engine Control Module	3.86	V
Output Shaft Speed Sensor	Engine Control Module	0	RPM
Park/Neutral Position Switch	Engine Control Module	Park/Neutral	
Power Mode	Engine Control Module	Off	
Remaining Fuel in Tank	Engine Control Module	2.4	%

Remote Vehicle Start Request Signal	Engine Control Module	Off	
Short Term Fuel Trim Bank 1	Engine Control Module	0	%
Short Term Fuel Trim Bank 2	Engine Control Module	0	%
Specific Humidity	Engine Control Module	1.39	%
Starter Relay Command	Engine Control Module	Off	
Start-Up IAT	Engine Control Module	-40	°C
Start-Up IAT Sensor 1	Engine Control Module	-40	°C
TCC/Cruise Control Brake Pedal Switch	Engine Control Module	Released	
Throttle Position	Engine Control Module	30	%
Throttle Position Performance Test	Engine Control Module	OK	
Torque Delivered Signal	Engine Control Module	-47.50	N·m
Transmission Fluid Temperature	Engine Control Module	28	°C
Vehicle Speed Sensor	Engine Control Module	0	km/h

Freeze Frame/Failure Records	DTC Display	Symptom Byte	DTC Description	Symptom Description	
Failure Record 5	P0113	00	Intake Air Temperature (IAT) Sensor Circuit High Voltage	---	
Parameter Name			Control Module	Value	Unit
Distance Since First Malfunction			Engine Control Module	0	km
Distance Since Last Malfunction			Engine Control Module	0	km
Ignition Cycles with Malfunction Since 1st Malfunction			Engine Control Module	2	Counts
Ignition Cycles without Malfunction Since Last Malfunction			Engine Control Module	14	Counts
Ignition Cycles without Completed Test Since 1st Malfunction			Engine Control Module	0	Counts
Warm-Ups Since DTC Cleared			Engine Control Module	0	Counts
Distance Since DTC Cleared			Engine Control Module	0	km
5V Reference 1			Engine Control Module	5.01	V

5V Reference 1 Circuit Status	Engine Control Module	OK	
5V Reference 2	Engine Control Module	5.01	V
5V Reference 2 Circuit Status	Engine Control Module	OK	
5V Reference 3	Engine Control Module	5.01	V
5V Reference 3 Circuit Status	Engine Control Module	OK	
5V Reference 4	Engine Control Module	5.01	V
5V Reference 4 Circuit Status	Engine Control Module	OK	
Air/Fuel Equivalence Ratio Command	Engine Control Module	0.31	
Accelerator Pedal Position	Engine Control Module	0	%
Ambient Air Temperature	Engine Control Module	30	°C
Ambient Humidity	Engine Control Module	0	%
BARO	Engine Control Module	0.0	kPa
BARO Sensor	Engine Control Module	0.00	V
Brake Pedal Position Circuit Signal	Engine Control Module	Released	
Brake Pedal Position Sensor Fully Released Learn Status	Engine Control Module	Complete	
Brake Pedal Position Sensor Signal	Engine Control Module	Released	
Calculated Catalyst Temperature Bank 1	Engine Control Module	107	°C
Calculated Catalyst Temperature Bank 2	Engine Control Module	107	°C
Crank Request Signal	Engine Control Module	No	
Cylinder 1 Deactivation Solenoid Valve Command	Engine Control Module	Off	
Cylinder 4 Deactivation Solenoid Valve Command	Engine Control Module	Off	
Cylinder 6 Deactivation Solenoid Valve Command	Engine Control Module	Off	
Cylinder 7 Deactivation Solenoid Valve Command	Engine Control Module	Off	
Cylinder Deactivation Performance Test	Engine Control Module	OK	
Desired Idle Speed	Engine Control	848	RPM

	Module		
Desired Throttle Position	Engine Control Module	18	%
Driver Requested Axle Torque	Engine Control Module	1973	N·m
ECT Sensor	Engine Control Module	28	°C
Engine Controls Ignition Relay Command	Engine Control Module	Off	
Engine Controls Ignition Relay Control Circuit High Voltage Test Status	Engine Control Module	Not Run	
Engine Controls Ignition Relay Control Circuit Low Voltage Test Status	Engine Control Module	OK	
Engine Controls Ignition Relay Control Circuit Open Test Status	Engine Control Module	OK	
Engine Controls Ignition Relay Feedback Signal	Engine Control Module	0.3	V
Engine Load	Engine Control Module	0.0	%
Engine Oil Absolute Pressure Sensor	Engine Control Module	92	kPa
Engine Run Time	Engine Control Module	00:00:00	
Engine Speed	Engine Control Module	0	RPM
EVAP Purge Solenoid Valve Command	Engine Control Module	0	%
Extended Travel Brake Pedal Position Signal	Engine Control Module	Released	
Extended Travel Brake Pedal Switch	Engine Control Module	Released	
Fuel Alcohol Content	Engine Control Module	0	%
Fuel Control Loop Status	Engine Control Module	Open	
Fuel Pressure Sensor	Engine Control Module	3	kPa
Fuel Rail Pressure Sensor	Engine Control Module	0.0	MPa
Fuel Rail Pressure Sensor 1	Engine Control Module	0.0	MPa
Fuel Tank Pressure Sensor	Engine Control Module	0.01	in. H ₂ O
HO ₂ S Bank 1 Sensor 1	Engine Control Module	1.89	V
HO ₂ S Bank 2 Sensor 1	Engine Control Module	1.90	V
IAT Sensor 1	Engine Control Module	-40	°C

IAT Sensor 2	Engine Control Module	10	Hz
IAT Sensor 2	Engine Control Module	-40	°C
Ignition 1 Signal	Engine Control Module	0.00	V
Ignition Accessory Signal	Engine Control Module	On	
Ignition Timing	Engine Control Module	0.0	°
Intake Air Humidity Sensor	Engine Control Module	0	%
Long Term Fuel Trim Bank 1	Engine Control Module	0	%
Long Term Fuel Trim Bank 2	Engine Control Module	0	%
MAF Sensor	Engine Control Module	0.00	g/s
MAF Sensor	Engine Control Module	0	Hz
MAF Sensor Supply Voltage Command	Engine Control Module	Off	
MAF Sensor Supply Voltage Control Circuit High Voltage Test Status	Engine Control Module	OK	
MAF Sensor Supply Voltage Control Circuit Low Voltage Test Status	Engine Control Module	OK	
MAF Sensor Supply Voltage Control Circuit Open Test Status	Engine Control Module	OK	
MAP Performance Test 1	Engine Control Module	OK	
MAP Performance Test 2	Engine Control Module	OK	
MAP Sensor	Engine Control Module	98.0	kPa
MAP Sensor	Engine Control Module	3.86	V
Output Shaft Speed Sensor	Engine Control Module	0	RPM
Park/Neutral Position Switch	Engine Control Module	Park/Neutral	
Power Mode	Engine Control Module	Off	
Remaining Fuel in Tank	Engine Control Module	2.4	%
Remote Vehicle Start Request Signal	Engine Control Module	Off	
Short Term Fuel Trim Bank 1	Engine Control Module	0	%
Short Term Fuel Trim Bank 2	Engine Control Module	0	%

	Module		
Specific Humidity	Engine Control Module	1.39	%
Starter Relay Command	Engine Control Module	Off	
Start-Up IAT	Engine Control Module	-40	°C
Start-Up IAT Sensor 1	Engine Control Module	-40	°C
TCC/Cruise Control Brake Pedal Switch	Engine Control Module	Released	
Throttle Position	Engine Control Module	30	%
Throttle Position Performance Test	Engine Control Module	OK	
Torque Delivered Signal	Engine Control Module	-47.50	N·m
Transmission Fluid Temperature	Engine Control Module	28	°C
Vehicle Speed Sensor	Engine Control Module	0	km/h



Global Diagnostic System 2

DTC Display

Overview

Vehicle Identification Number (VIN) 1GCVKSEJ7EZ [REDACTED]
 Report Creation Date 2017-10-04 14:31:46 EDT

Vehicle Configuration Property

Make Chevrolet
 Model Silverado
 Model Year 2014
 Engine Identifier 6.2L (L86)

System Information Property

VCI Serial Number MDI: [REDACTED]
 Vehicle Session Creation Date 2017-10-04 14:18:25
 Test Start Time 2017-10-04 14:31:40 EDT

Control Module Name	Control Module Status	DTC Count	DLC Pin
Instrument Cluster	DTCs Stored	1	1

Control Module	DTC Display	Symptom Byte	DTC Description	Symptom Description	Status
Instrument Cluster	B1325	03	Control Module Power Circuit	Low Voltage	Passed and Failed This Ignition Cycle Passed Since DTC Clear Passed and Failed DTC Current Status Not Current DTC History Status History



Global Diagnostic System 2

DTC Display

Overview

Vehicle Identification Number (VIN) 1GCVKSEJ7EZ [REDACTED]
 Report Creation Date 2017-10-04 14:27:16 EDT

Vehicle Configuration Property

Make Chevrolet
 Model Silverado
 Model Year 2014

System Information Property

VCI Serial Number MDI: [REDACTED]
 Vehicle Session Creation Date 2017-10-04 14:18:25
 Test Start Time 2017-10-04 14:27:09 EDT

Control Module Name	Control Module Status	DTC Count	DLC Pin
Inflatable Restraint Sensing and Diagnostic Module	DTCs Stored	1	1

Control Module	DTC Display	Symptom Byte	DTC Description	Symptom Description	Status
Inflatable Restraint Sensing and Diagnostic Module	B1325	07	Control Module Power Circuit	High Voltage	History DTC Current Status Not Current DTC History Status History MIL Status Not Requested



Global Diagnostic System 2

Read Vehicle Wide DTC and ID Information

Overview

Vehicle Identification Number (VIN)	1GCVKSEJ7EZ [REDACTED]
Report Creation Date	2017-10-04 14:43:35 EDT

Vehicle Configuration Property

Make	Chevrolet
Model	Silverado
Model Year	2014
Passenger Presence System Version	Passenger Presence System (AL0)
Chassis Control Module Version	Trailer Brake Control
Telematics Communication Interface Control Module Version	9
HVAC Control Module Type	Auto Control Dual Zone (CJ2)
Transfer Case Control Module Version	Transfer Case, Two Speed, Switch Activated (NQH)
Engine Identifier	6.2L (L86)

System Information Property

VCI Serial Number	MDI: [REDACTED]
Vehicle Session Creation Date	2017-10-04 14:18:25
Test Start Time	2017-10-04 14:43:13 EDT

Engine Control Module

Identification Information	Value
Vehicle Identification Number (VIN)	1GCVKSEJ7EZ [REDACTED]
End Model Part Number	12663391
Base Model Part Number	12617943
Software Module 1 Identifier	12663390
Software Module 2 Identifier	12660179
Software Module 3 Identifier	12651982
Software Module 4 Identifier	12659794
Software Module 5 Identifier	12660176
Software Module 6 Identifier	12659580

Software Module 7 Identifier 12625016
 Software Module 8 Identifier 12642482

DTC Display	Symptom Byte	DTC Description	Symptom Description	Status
P0097	00	Intake Air Temperature (IAT) Sensor 2 Circuit Low Voltage	---	Passed and Failed This Ignition Cycle Passed Last Test Passed Since DTC Clear Passed and Failed DTC History Not History Status MIL Status Not Requested
P00F4	00	Intake Air Humidity Sensor Circuit Low Voltage	---	Passed and Failed This Ignition Cycle Passed Last Test Passed Since DTC Clear Passed and Failed DTC History Not History Status MIL Status Not Requested
P0113	00	Intake Air Temperature (IAT) Sensor Circuit High Voltage	---	Passed and Failed This Ignition Cycle Passed Last Test Passed Since DTC Clear Passed and Failed DTC History History Status MIL Status Not Requested
P0563	00	System Voltage High Voltage	---	Passed and Failed This Ignition Cycle Passed Last Test Passed Since DTC Clear Passed and Failed

				DTC History
				History Status
				MIL Status Not Requested
				Passed and Failed
				This Ignition Cycle Passed
				Last Test Passed
P129C	00	Fuel Pump Driver Control Module System Voltage High Voltage	---	Since DTC Clear Passed and Failed
				DTC History Status History
				MIL Status Not Requested
				Passed and Failed
				This Ignition Cycle Passed
				Last Test Passed
P2228	00	Barometric Pressure (BARO) Sensor Circuit Low Voltage	---	Since DTC Clear Passed and Failed
				DTC History Status History
				MIL Status Not Requested

Chassis Control Module

Identification Information

	Value
Vehicle Identification Number (VIN)	1GCVKSEJ7EZ [REDACTED]
Subscriber ID	[REDACTED]
Date Programmed	20140428
Diagnostic Data Identifier	0401
Base Model Part Number	23132387
End Model Part Number	23135951
End Model Part Number Alpha Code	
Software Module 1 Identifier	23132389
Software Module 2 Identifier	23187754
Software Module 3 Identifier	23132398
Software Module 4 Identifier	23132399
Software Module 5 Identifier	23179860
System Code	04

DTC	Symptom	DTC Description	Symptom	Status
[REDACTED]	[REDACTED]	[REDACTED]	[REDACTED]	[REDACTED]

Display Byte

Description

Display Byte	Byte 1	Byte 2	Description	Severity	Other Info	Test Results
P0563	00		System Voltage High Voltage	---		Passed and Failed This Ignition Cycle Passed Last Test Passed Since DTC Clear Passed and Failed DTC History Status History MIL Status Not Requested
C111B	07		Trailer Brake Power Control Module System Voltage	High Voltage		Passed and Failed This Ignition Cycle Passed Last Test Passed Since DTC Clear Passed and Failed DTC History Status History MIL Status Not Requested
U0121	00		Lost Communication with Electronic Brake Control Module	---		Passed and Failed This Ignition Cycle Passed Last Test Passed Since DTC Clear Passed and Failed DTC History Status History MIL Status Not Requested
U0415	00		Invalid Data Received From Electronic Brake Control Module	---		Current This Ignition Cycle Failed Last Test Failed Current DTC Since DTC Clear Passed and Failed DTC History Status History MIL Status Not Requested

Transmission Control Module

Identification Information

	Value
Vehicle Identification Number (VIN)	1GCVKSEJ7EZ [REDACTED]
Date Programmed	20160630
Diagnostic Data Identifier	0
End Model Part Number	24270598
Base Model Part Number	24239352
Software Module 1 Identifier	24270599
Software Module 1 Identifier Alpha Code	AA
Software Module 2 Identifier	24272345
Software Module 2 Identifier Alpha Code	AB
Software Module 3 Identifier	24270734
Software Module 3 Identifier Alpha Code	AD
Software Module 4 Identifier	24270737
Software Module 4 Identifier Alpha Code	AD
System Code	0

No DTCs Stored

Power Take-Off Control Module

No Communication

Transfer Case Control Module

Identification Information

	Value
Vehicle Identification Number (VIN)	1GCVKSEJ7EZ [REDACTED]
Diagnostic Data Identifier	0306
Software Part Number	23285502
Calibration Part Number	23285505
End Model Part Number	24269374
Base Model Part Number	24256989
Hardware Version	H3yÿÿ

DTC Display	Symptom Byte	DTC Description	Symptom Description	Status
				Current
				This Ignition Cycle
				Failed
				DTC Current Status
U0415	00	Invalid Data Received From Electronic Brake Control Module	- - -	Current
				DTC History Status
				History
				MIL Status
				Not Requested

Electronic Brake Control Module

Identification Information

	Value
Vehicle Identification Number (VIN)	1GCVKSEJ7EZ [REDACTED]
Subscriber ID	yyyyyyyyyy
Date Programmed	Saturday, March 31, 65556
Diagnostic Data Identifier	2B03
XML Configuration Compatibility Identifier	260
XML Data File Part Number	23171758
XML Data File Alpha Code	EA
Previous Subscriber ID	
2nd Previous Subscriber ID	
Manufacturer Enable Counter	0
Manufacturer's Traceability Number	[REDACTED]
Module Diagnostic Address	28
End Model Part Number	23425455
Base Model Part Number	23425456
End Model Part Number Alpha Code	DA
Base Model Part Number Alpha Code	DA
Boot Software Part Number	23115283
Software Part Number Alpha Code	CA
Software Module 1 Identifier	23425342
Software Module 1 Identifier Alpha Code	DA
Software Module 2 Identifier	23425343
Software Module 2 Identifier Alpha Code	DA
Software Module 3 Identifier	23164785
Software Module 3 Identifier Alpha Code	DA
Software Module 4 Identifier	
Software Module 4 Identifier Alpha Code	
Software Module 5 Identifier	
Software Module 5 Identifier Alpha Code	
Software Module 6 Identifier	
Software Module 6 Identifier Alpha Code	
Software Module 7 Identifier	
Software Module 7 Identifier Alpha Code	
Software Module 8 Identifier	
Software Module 8 Identifier Alpha Code	
GMLAN Identification Data - Bus 1 Type	High Speed CAN Bus
GMLAN Identification Data - GMLAN Kernel 1 Version	300
GMLAN Identification Data - Data Dictionary 1 Version	60407
GMLAN Identification Data - Bus 2 Type	Chassis Expansion CAN Bus
GMLAN Identification Data - GMLAN Kernel 2 Version	300
GMLAN Identification Data - Data Dictionary 2 Version	60401
System Code	2B

DTC Display	Symptom Byte	DTC Description	Symptom Description	Status
C0800	03	Control Module Power Circuit	Low Voltage	History This Ignition Cycle Passed DTC Current Status Not Current DTC History Status History MIL Status Not Requested
C0800	07	Control Module Power Circuit	High Voltage	History This Ignition Cycle Passed DTC Current Status Not Current DTC History Status History MIL Status Not Requested
C0131	5A	Traction Control System Pressure Circuit	Not Plausible	Current This Ignition Cycle Not Run DTC Current Status Current DTC History Status History MIL Status Requested
C0267	00	Low Brake Fluid Indicated	- - -	History This Ignition Cycle Passed DTC Current Status Not Current DTC History Status History MIL Status Not Requested
C025E	06	Brake Booster Vacuum Sensor Circuit	Low Voltage/Open	History This Ignition Cycle Passed DTC Current Status Not Current DTC History Status History MIL Status Not Requested
C025E	1F	Brake Booster Vacuum Sensor Circuit	Erratic	History

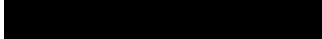
			This Ignition Cycle	Passed
			DTC Current Status	Not Current
			DTC History Status	History
			MIL Status	Not Requested
			History	
			This Ignition Cycle	Not Run
			DTC Current Status	Not Current
			DTC History Status	History
			MIL Status	Not Requested
C025E	5A	Brake Booster Vacuum Sensor Circuit	Not Plausible	

Parking Brake Control Module

No Communication

Power Steering Control Module

Identification Information

	Value
System Identification	NEXTR0300
System Name or Engine Type	RACK-EPS
Subscriber ID	0000000000
Date Programmed	Monday, April 28, 2014
Diagnostic Data Identifier	901
Manufacturer Enable Counter	0
Module Diagnostic Address	31
Manufacturer's Traceability Number	
Software Module 1 Identifier	23433183
Software Module 2 Identifier	23210776
End Model Part Number	23467710
Base Model Part Number	23136120
Software Module 1 Identifier Alpha Code	AA
Software Module 2 Identifier Alpha Code	AA
End Model Part Number Alpha Code	AA
Base Model Part Number Alpha Code	AA
Boot Software Part Number	23467711

No DTCs Stored

Steering Wheel Angle Sensor Module

Identification Information

Value



Diagnostic Data Identifier	501
Manufacturer's Traceability Number	[REDACTED]
Module Diagnostic Address	34
End Model Part Number	13590209
End Model Part Number Alpha Code	CD
GMLAN Identification Data - Bus 1 Type	Chassis Expansion CAN Bus
GMLAN Identification Data - GMLAN Kernel 1 Version	300
GMLAN Identification Data - Data Dictionary 1 Version	50202

No DTCs Stored

Body Control Module

Identification Information	Value
End Model Part Number	13594768
Boot Software Part Number	13586286
Manufacturer Enable Counter	0
Calibration Part Number 1	13594771
Calibration Part Number 2	23490954
Calibration Part Number 3	23490946
Calibration Part Number 4	23490927
Calibration Part Number 5	23490943
Calibration Part Number 6	23490913
Calibration Part Number 7	23490897
Calibration Part Number 8	23490872
Calibration Part Number 9	23490862
Calibration Part Number 10	23490839
Calibration Part Number 11	23490819
Calibration Part Number 12	23490813
Calibration Part Number 13	13338869
Calibration Part Number 14	23193183
Calibration Part Number 15	13505711
Calibration Part Number 16	13505709
Calibration Part Number 17	13505710
Calibration Part Number 18	13505707
Calibration Part Number 19	13505708
Calibration Part Number 20	23490812
Diagnostic Data Identifier	401
Module Diagnostic Address	40
Vehicle Identification Number (VIN)	1GCVKSEJ7EZ [REDACTED]
Odometer	82284

DTC Display Byte	Symptom Byte	DTC Description	Symptom Description	Status
B1395	03	Control Module Voltage Reference Output 1 Circuit	Low Voltage	Passed and Failed This Passed

DTC ID	Severity	Component	Code	Failure Mode	Ignition Cycle	Last Test	Since DTC Clear	DTC History Status	MIL Status
B1517	03	Battery Voltage		Low Voltage	Passed and Failed	Passed	Passed and Failed	History	Not Requested
B2530	02	Front Fog Lamps Control Circuit		Short to Ground	Passed and Failed	Passed	Passed and Failed	History	Not Requested
B2645	03	Ambient Light Sensor Circuit		Low Voltage	Passed and Failed	Passed	Passed and Failed	History	Not Requested

DTC	History	DTC	History	DTC	History	DTC	History
Status	Status	Status	Status	Status	Status	Status	Status
B2699	04	Right Headlamp Control Circuit	Open	Open	Open	Open	Open
B3006	02	Hood Ajar Circuit	Short to Ground	Short to Ground	Short to Ground	Short to Ground	Short to Ground
B3101	00	Tire Pressure/Remote Control Door Lock Receiver Data Circuit	---	---	---	---	---
B3600	03	Passenger Compartment Dimming Request Signal Circuit	Low Voltage	Low Voltage	Low Voltage	Low Voltage	Low Voltage

DTC History
 History
 Status
 MIL Not
 Status Requested
 Passed and Failed
 This
 Ignition Not Run
 Cycle
 Last Test Not Run
 Since DTC Clear Passed and Failed
 DTC History History
 Status
 MIL Not
 Status Requested
 Passed and Failed
 This
 Ignition Passed
 Cycle
 Last Test Passed
 Since DTC Clear Passed and Failed
 DTC History History
 Status
 MIL Not
 Status Requested
 Passed and Failed
 This
 Ignition Passed
 Cycle
 Last Test Passed
 Since DTC Clear Passed and Failed
 DTC History History
 Status
 MIL Not
 Status Requested
 Passed and Failed
 This
 Passed

DTC	Severity	Description	Condition	Ignition Cycle	Last Test	Since DTC Clear	DTC History Status	MIL Status
B3883	01	License Plate Lamp Circuit	Short to Battery	Passed and Failed This Ignition Cycle	Passed	Passed and Failed	History	Not Requested
B3883	04	License Plate Lamp Circuit	Open	Passed and Failed This Ignition Cycle	Not Run	Passed and Failed	History	Not Requested
B3949	04	Right Front Turn Signal Circuit	Open	Failed Current This Ignition Cycle	Failed Current DTC	Passed and Failed		

				Clear DTC History History Status MIL Not Status Requested Passed and Failed This Ignition Passed Cycle Last Test Passed
B3950	04	Left Rear Turn Signal Circuit	Open	Since DTC Passed Clear and Failed DTC History History Status MIL Not Status Requested Passed and Failed This Ignition Passed Cycle Last Test Passed
B3951	04	Right Rear Turn Signal Circuit	Open	Since DTC Passed Clear and Failed DTC History History Status MIL Not Status Requested Passed and Failed This Ignition Passed Cycle Last Test Passed
B3978	00	No Environment Identifier Received From Inflatable Restraint Sensing and Diagnostic Module	---	Since DTC Passed Clear and Failed DTC History History Status MIL Not Status Requested Passed and Failed This Ignition Passed Cycle Last Test Passed
B3979	00	No Environment Identifier Received From	---	Since DTC Passed Clear and Failed DTC History History Status MIL Not Status Requested Passed and Failed

HVAC Control Module

				This Ignition Cycle	Passed
				Last Test	Passed
				Since DTC Clear	Passed and Failed
				DTC History Status	History
				MIL Status	Not Requested
					Passed and Failed
				This Ignition Cycle	Passed
				Last Test	Passed
B3980	00	No Environment Identifier Received From Instrument Cluster	---	Since DTC Clear	Passed and Failed
				DTC History Status	History
				MIL Status	Not Requested
					Passed and Failed
				This Ignition Cycle	Passed
				Last Test	Passed
B3981	00	No Environment Identifier Received From Electronic Brake Control Module	---	Since DTC Clear	Passed and Failed
				DTC History Status	History
				MIL Status	Not Requested
					Passed and Failed
				This Ignition Cycle	Passed
				Last Test	Passed
C0277	06	Brake Pedal Position Sensor Circuit	Low Voltage/Open	Since DTC Clear	Passed and Failed
				DTC History Status	History
				MIL Status	Not Requested
					Passed and Failed
				This Ignition Cycle	Passed
				Last Test	Passed
				Since DTC Clear	Passed and Failed

				Clear DTC History History Status MIL Not Status Requested Current This Ignition Not Run Cycle Last Failed Test Current DTC Since DTC Failed Clear DTC History History Status MIL Not Status Requested Passed and Failed This Ignition Passed Cycle Last Passed Test
B101D	F0	Electronic Control Unit Hardware	Internal Malfunction	
B1325	03	Control Module Power Circuit	Low Voltage	Since DTC Passed Clear and Failed DTC History History Status MIL Not Status Requested Passed and Failed This Ignition Passed Cycle Last Passed Test
U153A	00	Lost Communication with Device on LIN Bus	- - -	Since DTC Passed Clear and Failed DTC History History Status MIL Not Status Requested

Inflatable Restraint Sensing and Diagnostic Module

Identification Information

	Value
Vehicle Identification Number (VIN)	1GCVKSEJ7EZ [REDACTED]
End Model Part Number	13592880
Base Model Part Number	13590210
Manufacturer's Traceability Number	[REDACTED]
Inflatable Restraint Sensing and Diagnostic Module Primary Key	5108
Software Part Number	13518038
Calibration Part Number 1	23205108
Calibration Part Number 2	23207234
Diagnostic Data Identifier	0B11
Software Module 1 Identifier	0
Software Module 2 Identifier	1
High Voltage Disable Requested - Crash Event Detected	No
Transmitting Acceleration Sensor Reading on Bus	Enabled

DTC Display	Symptom Byte	DTC Description	Symptom Description	Status
B1325	07	Control Module Power Circuit	High Voltage	History DTC Current Status Not Current DTC History Status History MIL Status Not Requested

Passenger Presence Module

Identification Information

	Value
End Model Part Number	23133680
Base Model Part Number	23133680
Manufacturer's Traceability Number	[REDACTED]
Software Part Number	23133762
Calibration Part Number 1	23133683

DTC Display	Symptom Byte	DTC Description	Symptom Description	Status
B1325	07	Control Module Power Circuit	High Voltage	History DTC Current Status Not Current DTC History Status History MIL Status Not Requested

Instrument Cluster

Identification Information

Vehicle Identification Number (VIN)	1GCVKSEJ7EZ [REDACTED]
Odometer	82284
Subscriber ID	PCFWSTN#51
Previous Subscriber ID	YYYYYYYYYY
2nd Previous Subscriber ID	
Date Programmed	Monday, April 28, 2014
Diagnostic Data Identifier	0569
XML Configuration Compatibility Identifier	13
XML Data File Part Number	23498636
XML Data File Alpha Code	AW
Manufacturer Enable Counter	0
Module Diagnostic Address	60
End Model Part Number	23448515
Base Model Part Number	22754627
Software Module 1 Identifier	23448507
Software Module 2 Identifier	
Software Module 3 Identifier	
Software Module 4 Identifier	
Software Module 5 Identifier	23164779
Software Module 6 Identifier	23179946
Software Module 7 Identifier	22877868
Software Module 8 Identifier	23179947
Software Module 9 Identifier	22877878
Software Module 10 Identifier	22877880
Software Module 12 Identifier	23456332
Software Module 13 Identifier	23424053
Software Module 14 Identifier	23101028
Software Module 15 Identifier	28397719
Software Module 16 Identifier	0
GMLAN Identification Data - Bus 1 Type	Low Speed CAN Bus
GMLAN Identification Data - GMLAN Kernel 1 Version	300
GMLAN Identification Data - Data Dictionary 1 Version	60402
System Code	05
Calibration Part Number 12	[REDACTED]
Manufacturer's Traceability Number	[REDACTED]
Steering Wheel Control Switches Part Number	1156866561
Head-Up Display Part Number	0

DTC Display	Symptom Byte	DTC Description	Symptom Description	Status
B1325	03	Control Module Power Circuit	Low Voltage	Passed and Failed
				This Ignition Cycle
				Passed
				Since DTC
				Passed and

Clear	Failed
DTC Current Status	Not Current
DTC History Status	History

Radio Controls

Identification Information	Value
Boot Software Part Number	22884775
Calibration Part Number 1	22884770
Calibration Part Number 2	
Calibration Part Number 3	
End Model Part Number	23176312
Base Model Part Number	23176312

DTC Display	Symptom Byte	DTC Description	Symptom Description	Status
B1325	07	Control Module Power Circuit	High Voltage	History DTC Current Status DTC History Status
				Not Current History

HVAC Controls

Identification Information	Value
Boot Software Part Number	22884779
Calibration Part Number 1	22884774
Calibration Part Number 2	
Calibration Part Number 3	
Diagnostic Data Identifier	FFFF
End Model Part Number	23176290
Base Model Part Number	23176290

DTC Display	Symptom Byte	DTC Description	Symptom Description	Status
B1325	07	Control Module Power Circuit	High Voltage	History DTC Current Status DTC History Status
				Not Current History

Radio

Identification Information	Value
End Model Part Number	13592804
Boot Software Part Number	287454020

Software Module 1 Identifier	13592802
Software Module 2 Identifier	13590757
Software Module 3 Identifier	23453622
Software Module 4 Identifier	23200932
Software Module 5 Identifier	23146921
Software Module 6 Identifier	23163210
Software Module 7 Identifier	23146914
Software Module 8 Identifier	22908399
Software Module 9 Identifier	22908412
Software Module 10 Identifier	22908401
Software Module 11 Identifier	23146905
Digital Radio Receiver ID	TJJD8301
DVD Region Code	
DVD Region Code Changes Remaining	
Manufacturer Enable Counter	0
VIN Digits 2-17	GCVKSEJ7EZ [REDACTED]
Diagnostic Data Identifier	203
Manufacturer's Traceability Number	[REDACTED]

DTC Display	Symptom Byte	DTC Description	Symptom Description	Status
B1325	03	Control Module Power Circuit	Low Voltage	History DTC Current Status Not Current DTC History Status History
B1325	07	Control Module Power Circuit	High Voltage	History DTC Current Status Not Current DTC History Status History
U0155	00	Lost Communication with Instrument Cluster	- - -	History DTC Current Status Not Current DTC History Status History
U0198	00	Lost Communication with Telematic Control Module	- - -	History DTC Current Status Not Current DTC History Status History
U0164	00	Lost Communication with HVAC Control Module	- - -	History DTC Current Status Not Current DTC History Status History

Amplifier

Identification Information

Calibration Part Number 1	23184023
Calibration Part Number 10	23436903
End Model Part Number	23436913
Diagnostic Data Identifier	0

DTC Display	Symptom Byte	DTC Description	Symptom Description	Status
B1325	03	Control Module Power Circuit	Low Voltage	History DTC Current Status Not Current DTC History Status History
B127C	02	Microphone 2 Input Signal Circuit	Short to Ground	History DTC Current Status Not Current DTC History Status History
B127D	02	Microphone 3 Input Signal Circuit	Short to Ground	History DTC Current Status Not Current DTC History Status History

Media Disc Player

No Communication

Human Machine Interface Control Module

Identification Information

Identification Information	Value
End Model Part Number	23443746
Boot Software Part Number	23443769
Calibration Part Number 1	23443769
Calibration Part Number 2	23195533
Calibration Part Number 3	23471854
Calibration Part Number 4	23196681
Calibration Part Number 5	23137227
Calibration Part Number 6	23176150
Calibration Part Number 7	23137254
Calibration Part Number 8	23154071
Calibration Part Number 9	23137230
Calibration Part Number 10	23175612
Calibration Part Number 11	23151563
Calibration Part Number 12	0

Calibration Part Number 13 0
 Calibration Part Number 14 23443775
 Calibration Part Number 15 23443783
 Calibration Part Number 16 0
 Calibration Part Number 17 10000002
 Calibration Part Number 18 14002025
 Calibration Part Number 19 14002017
 Control Module Production Date 29.03.2014
 Software Freeze Date 28.11.2013
 VIN Digits 2-17 GCVKSEJ7EZ [REDACTED]
 Diagnostic Data Identifier 8F01
 Manufacturer Enable Counter 0
 Hardware Version PP 1.00

DTC Display	Symptom Byte	DTC Description	Symptom Description	Status
B127B	2B	Rearview Camera Input Signal Circuit	Missing Reference	History DTC Current Status DTC History Status
				Not Current History

Telematics Communication Interface Control Module

Identification Information

Identification Information	Value
Bluetooth	Disabled
Call Mode	CDMA A Band
Current Transceiver Identifier	21
End Model Part Number	23115625
Firmware Over-the-Air Version	4308
GSM Network Code	0
GSM Station Identifier	0
Manufacturer	LG
Manufacturer's Traceability Number	[REDACTED]
Mobile Directory Number	[REDACTED]
Mobile Identification Number	[REDACTED]
Mobile Equipment Identifier	[REDACTED]
Module Generation Identifier	9
Network Access Identifier	M: [REDACTED]
Network Access Identifier Password	vzw
Off-Board Navigation	Enabled
OnStar Customer Identifier	90694410
Option Configuration	On
Preferred Roaming List Outdated Status	No
Preferred Roaming List Update Command	Inactive
Preferred Roaming List Version Number	51725

Remote Vehicle Speed Limiting Active
 Software Module 1 Identifier 344E36
 Software Module 1 Identifier Alpha Code 4N6
 Utility File Part Number 22790658

No DTCs Stored

HVAC Control Module

Identification Information	Value
Vehicle Identification Number (VIN)	1GCVKSEJ7EZ [REDACTED]
Date Programmed	Monday, April 28, 2014
Diagnostic Data Identifier	51B
End Model Part Number	13591693
Base Model Part Number	13591693
Software Module 1 Identifier	13591698
Software Module 2 Identifier	23433579
Software Module 3 Identifier	23478759

No DTCs Stored

Seat Memory Control Module - Driver

Identification Information	Value
Diagnostic Data Identifier	0510
Module Diagnostic Address	A8
Calibration Part Number 1	23175983
End Model Part Number	23120589
Base Model Part Number	23120589
Software Module 1 Identifier Alpha Code	AB
End Model Part Number Alpha Code	GE
Base Model Part Number Alpha Code	GD

DTC Display	Symptom Byte	DTC Description	Symptom Description	Status	
B1325	07	Control Module Power Circuit	High Voltage	History DTC Current Status	Not Current
				DTC History Status	History

Parking Assist Control Module

No Communication

Claimant Interview

[REDACTED]

On 9/20/17 Patrick Roche called and spoke to [REDACTED], he confirmed the DOL and that the accident occurred in Dallas, TX on Ledbetter Road. He said he was driving alone. He said he was on Ledbetter Road going approaching Lancaster road and as he tried to change lanes. He was in the right lane and trying to get into the center lane. He said as he was doing this his steering wheel locked up and he was unable to correct it, and this caused him to strike another vehicle that was also attempting to change lanes He estimates he was going 25-30 mph but it may have been less. He said he was wearing his seat belt. He has had similar issues in the past and did not know what it was until he got the recall notice. He said he had the recall repair done. He said he said the police came to scene but he said he does not believe a report was made. He said he has not made a claim with his insurance as he does not have the money to pay his \$1000 deductible. He said he is still driving the vehicle. He said he has owned the vehicle about. He said he probably had the AC on when the accident happened and probably had the radio on too. He said he did have the battery replaced on it in June of 2017.

Claimant Interview

[REDACTED]

On 9/20/17 Patrick Roche called and spoke to [REDACTED], he advised he thinks the DOL was 9/12/17 but was not 100 % sure. He said he was leaving his Subdivision and he was going the speed limit and he had two car in front of him, and as he was going around a curve to the left and then he had to make a quick right and he said as he went around the curve he felt the steering wheel get very tight suddenly and he was unable to complete his turn, and he applied the brakes and the pedal went to the floor and his tires screeched, and he hit a mailbox and went onto some wet grass and struck a large decorative boulder. He said he has never experienced this anything like this before. He said the Boone county sheriffs came to the scene. He said he was injured in the accident had a mild ankle sprain and he injured his elbow with possible ligament damage. He said the vehicle is at Jeff Wyler Honda on Burlington Pike in Florence KY.

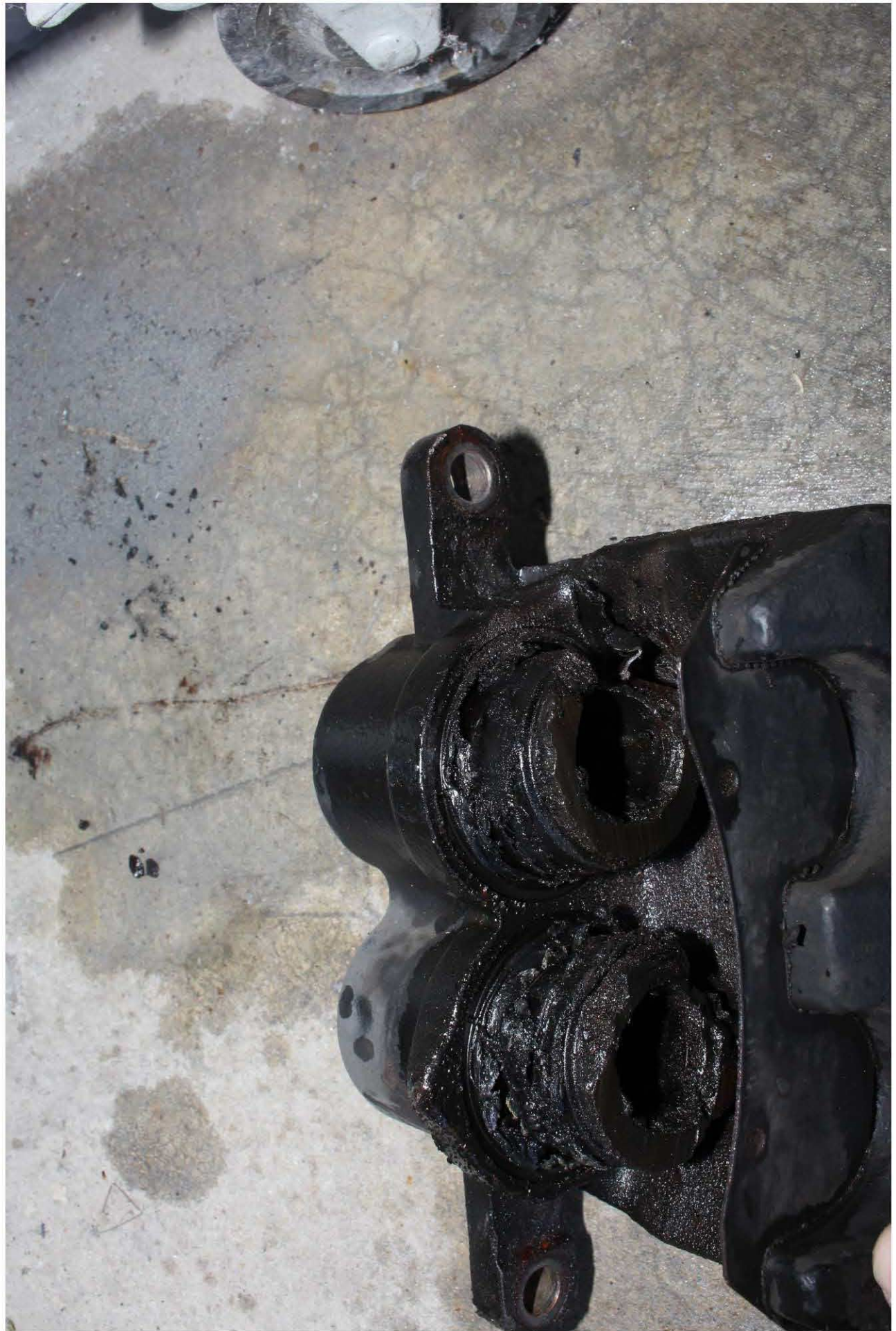














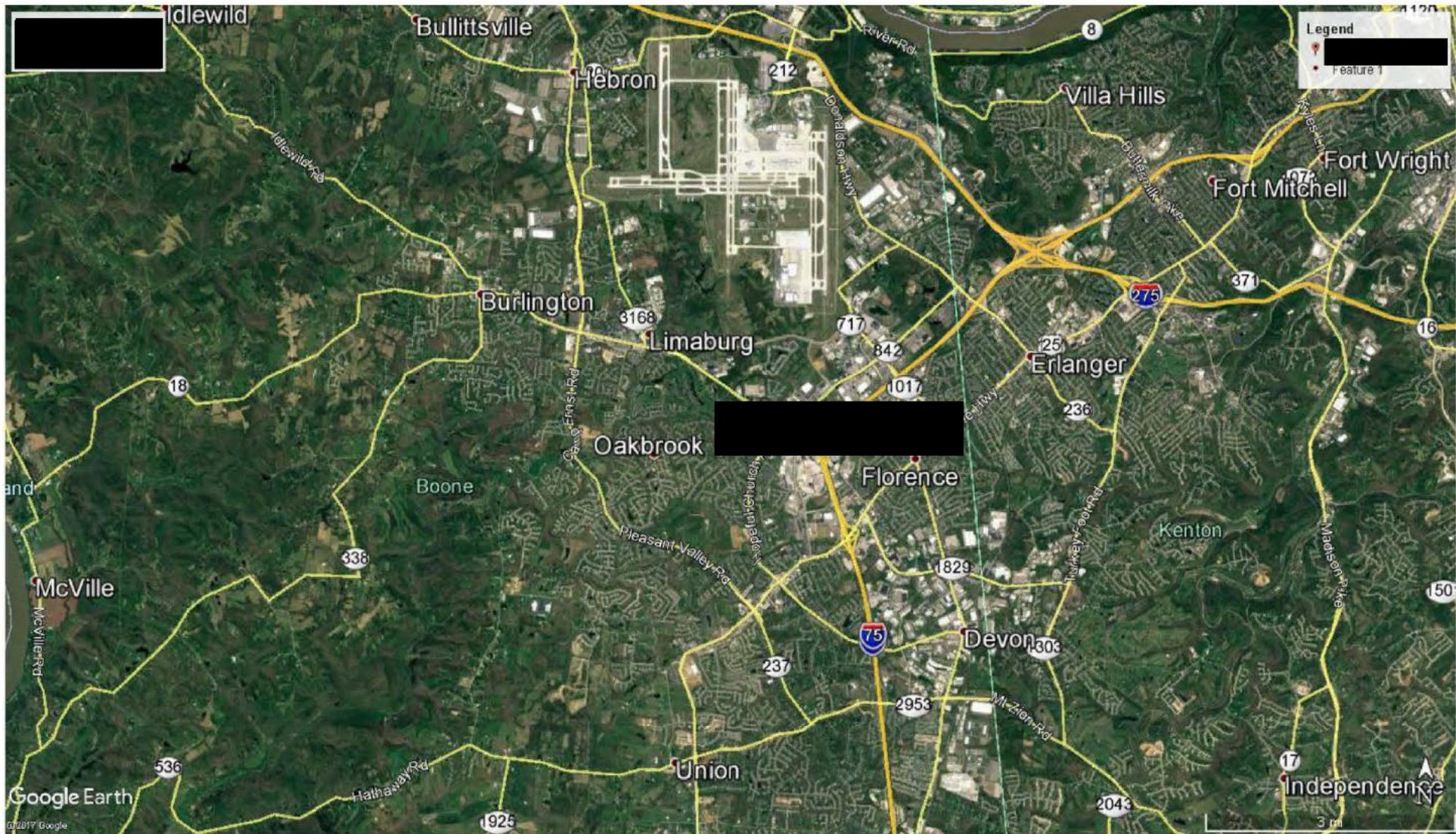


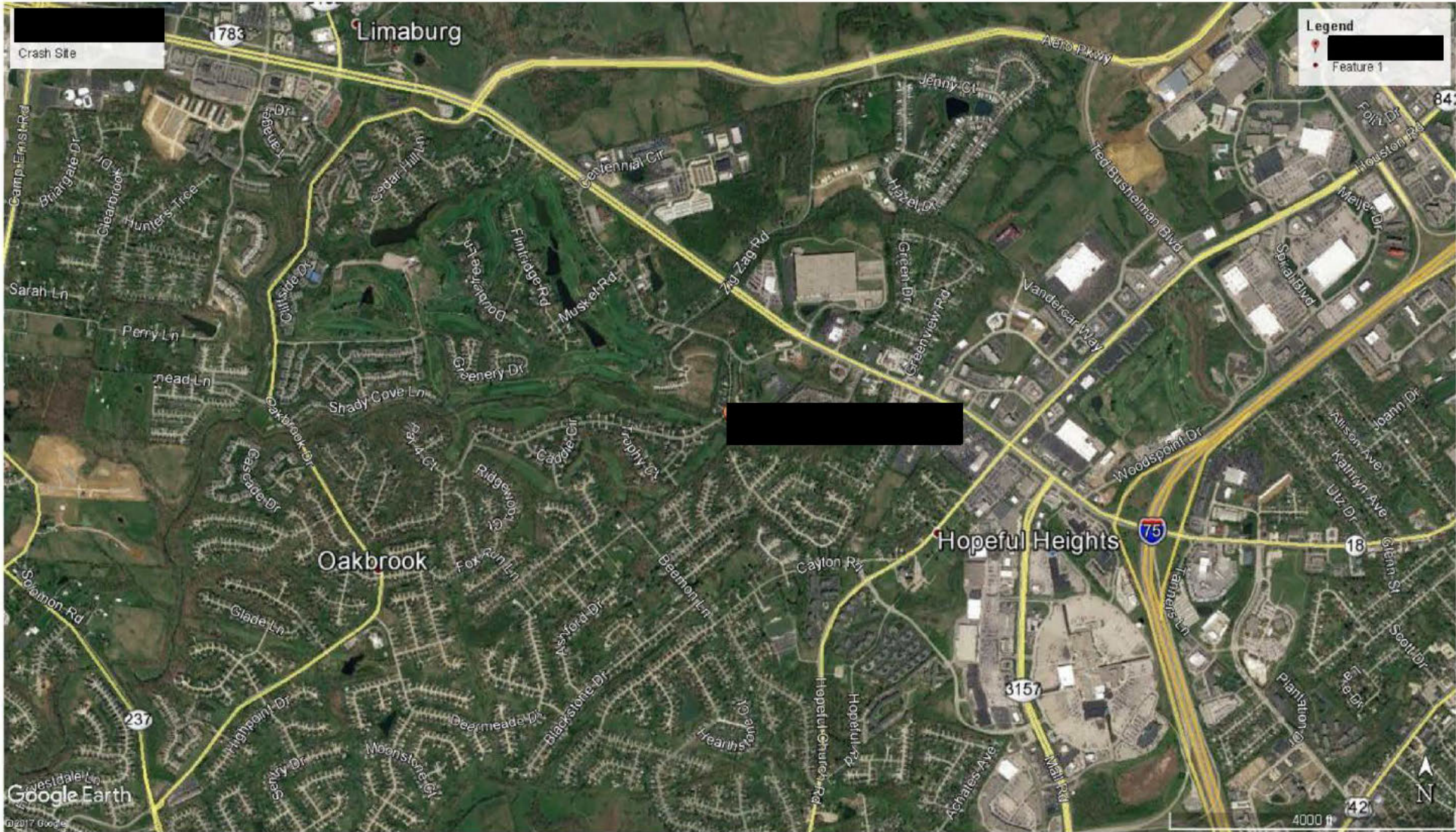


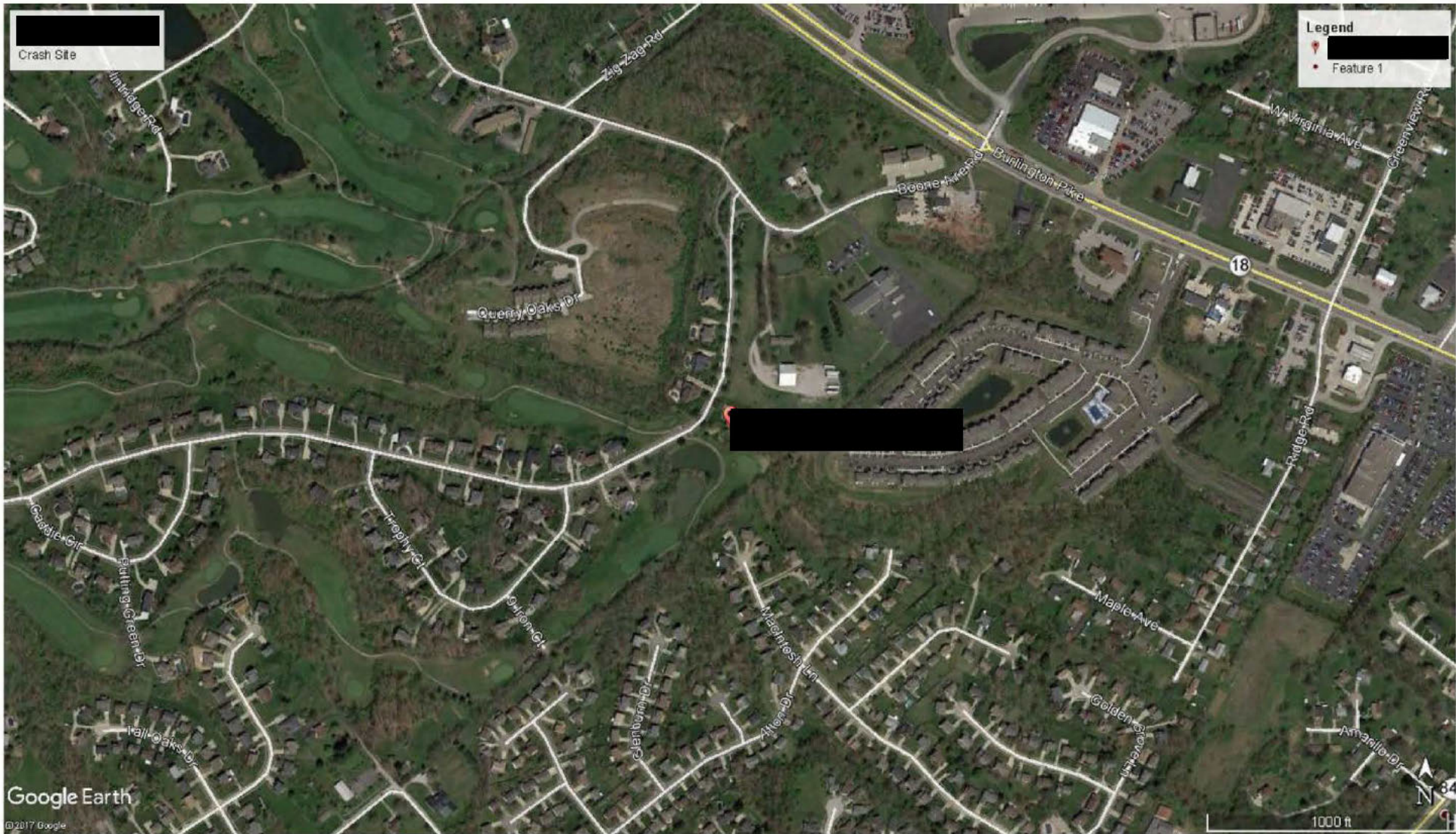


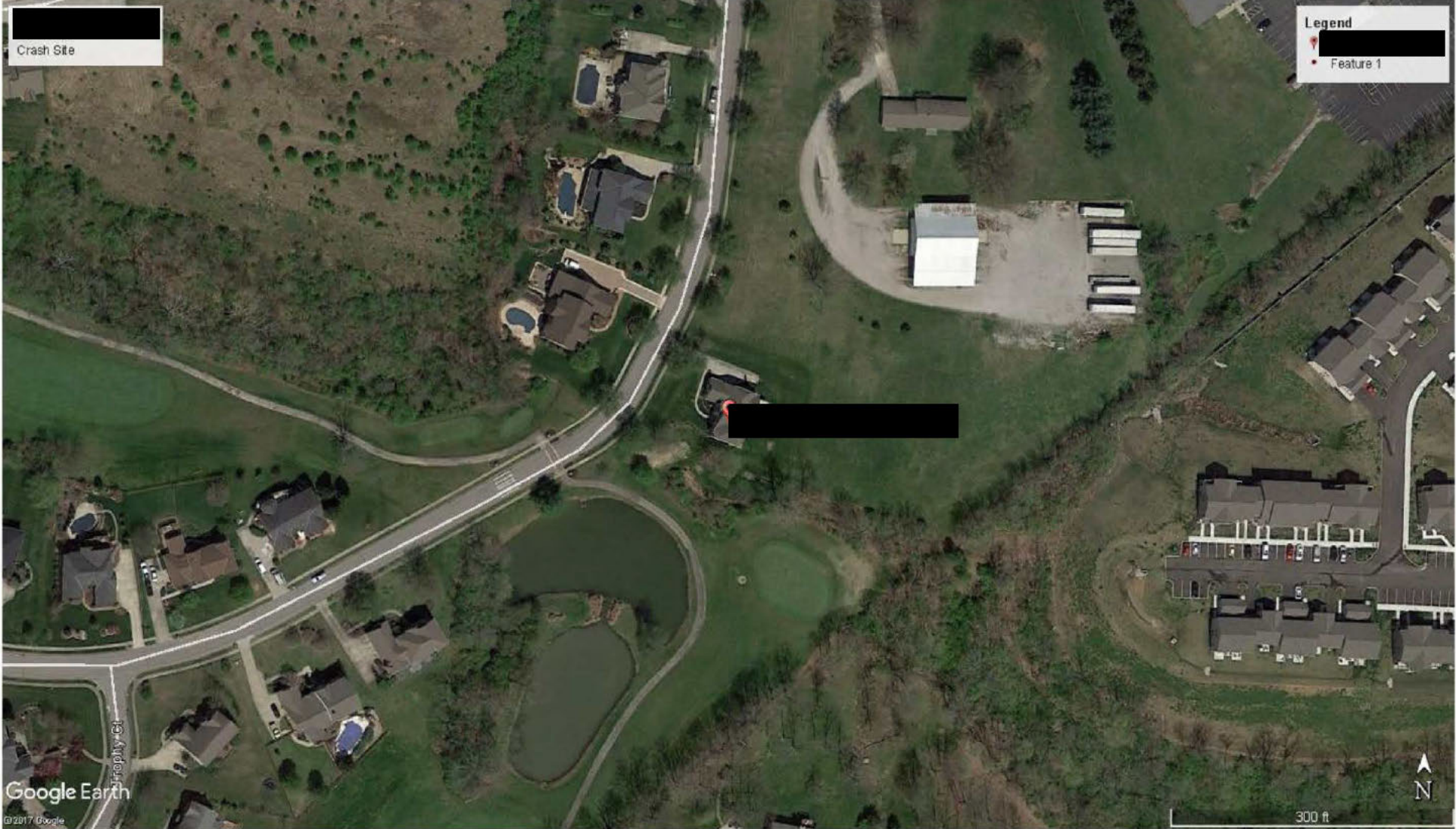












Crash Site

Legend

Feature 1

Google Earth

© 2017 Google

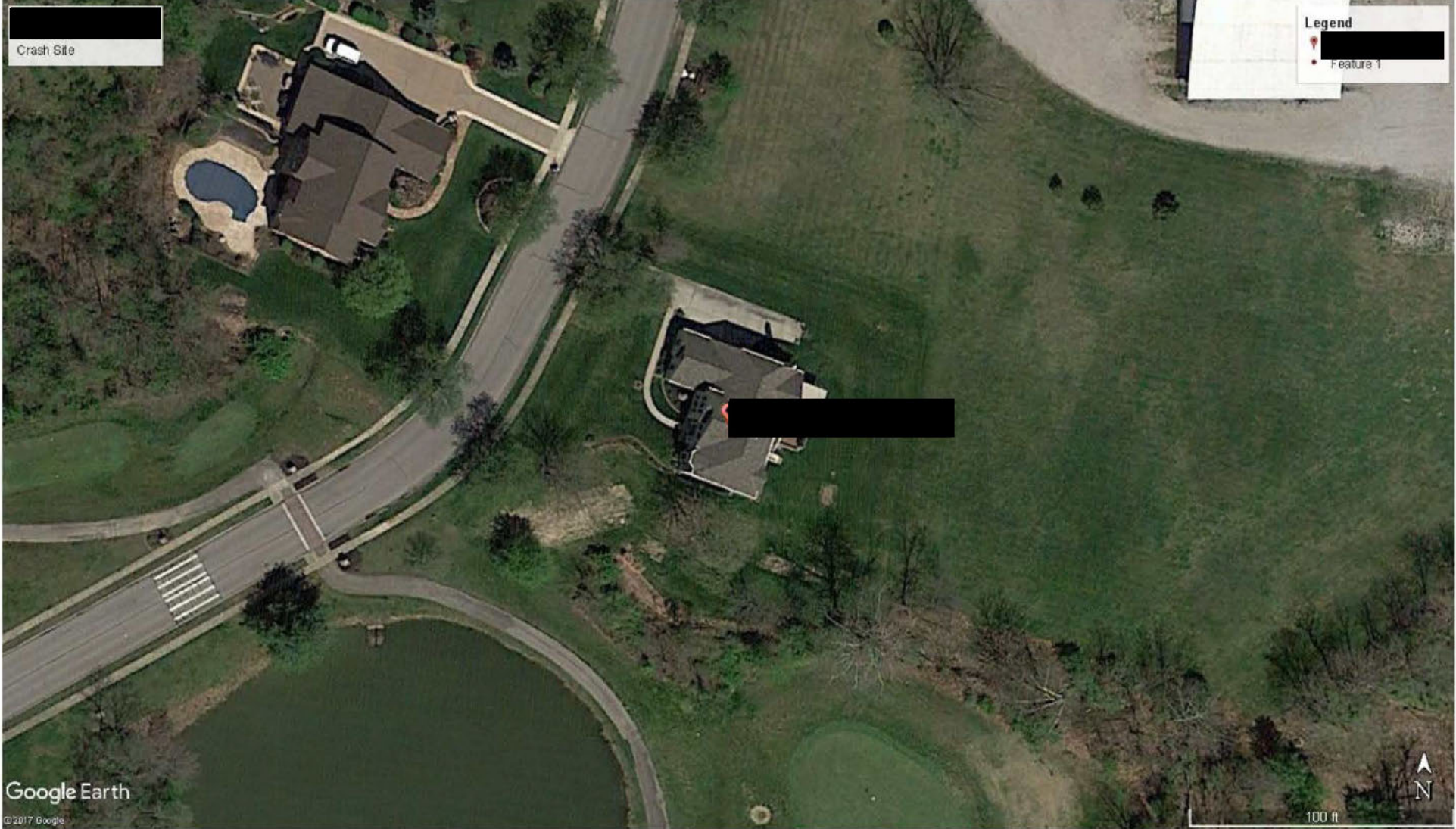
Jeffery Ct

300 ft

N

Crash Site

Legend
Feature 1

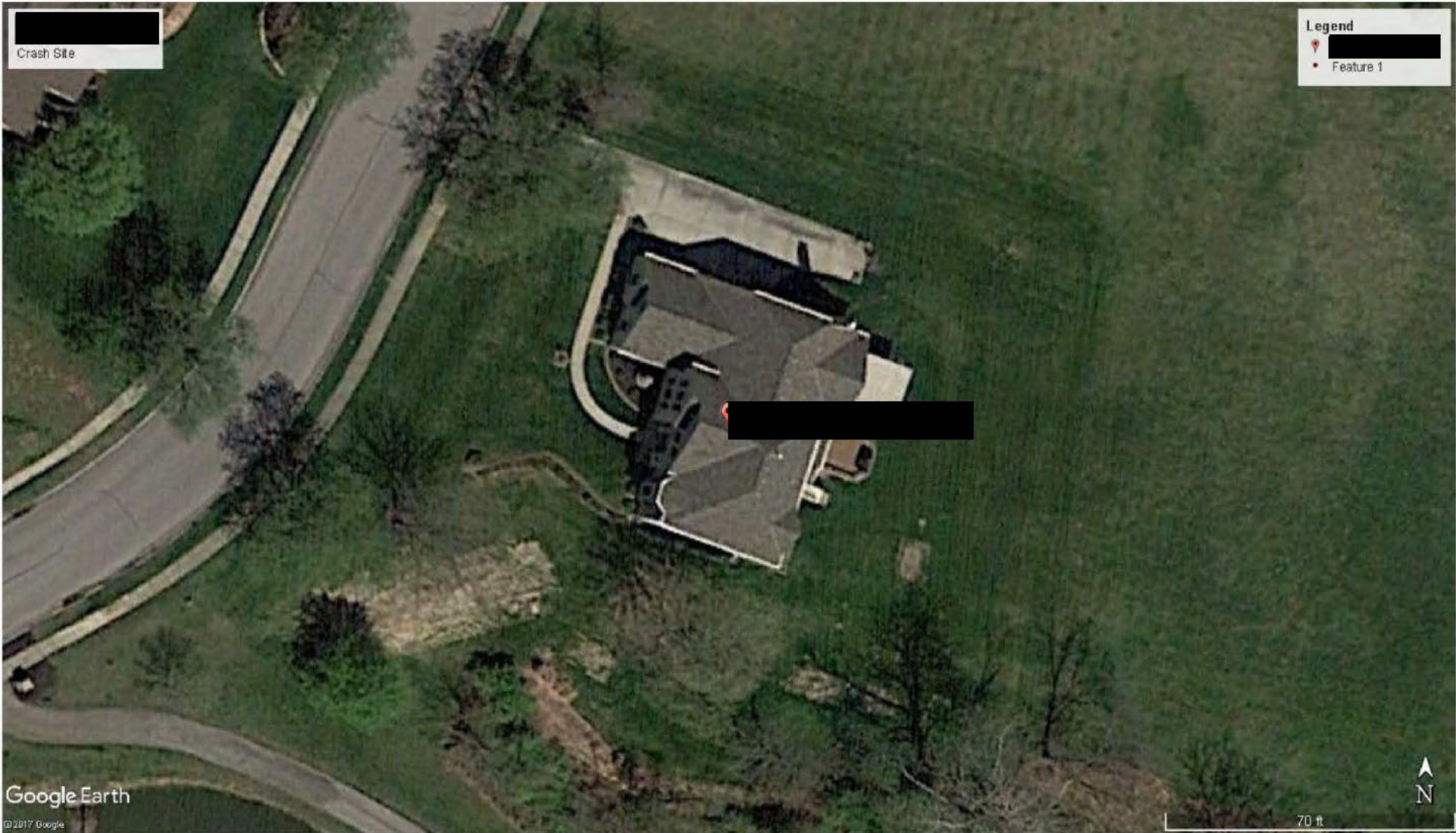


Google Earth

©2017 Google

100 ft





Crash Site

Legend



Feature 1

Google Earth

© 2017 Google



70 ft

Crash Site

Legend

- Feature 1



Google Earth

©2017 Google

7.31 ft



Crash Site

Legend

- Feature 1



Google Earth

©2017 Google



6.45 ft

Crash Site

Legend
Feature 1



Google Earth

© 2017 Google

7.94 ft

Crash Site

Legend

- Feature 1



Google Earth

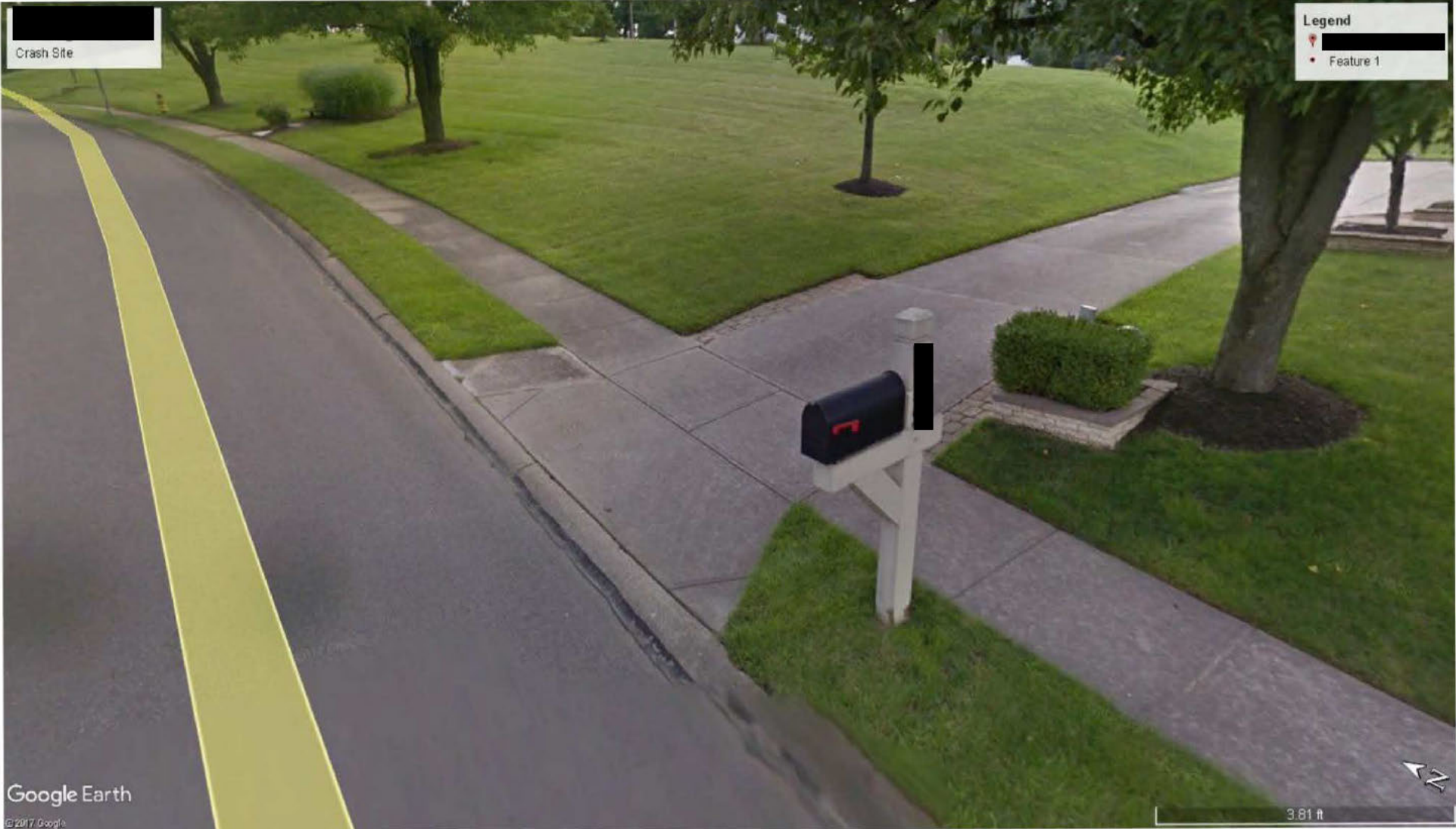
© 2017 Google

7.58 ft

Crash Site

Legend

- Feature 1



Google Earth

©2017 Google

3.81 ft

Crash Site

Legend
Feature 1



Google Earth

©2017 Google



7.78 ft

Crash Site

Legend

- Feature 1



Google Earth

©2017 Google

9.34 ft

[Redacted]
Crash Site

Legend
[Redacted]
• Feature 1



Google Earth
©2017 Google

4.63 ft

















































































































