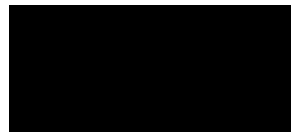


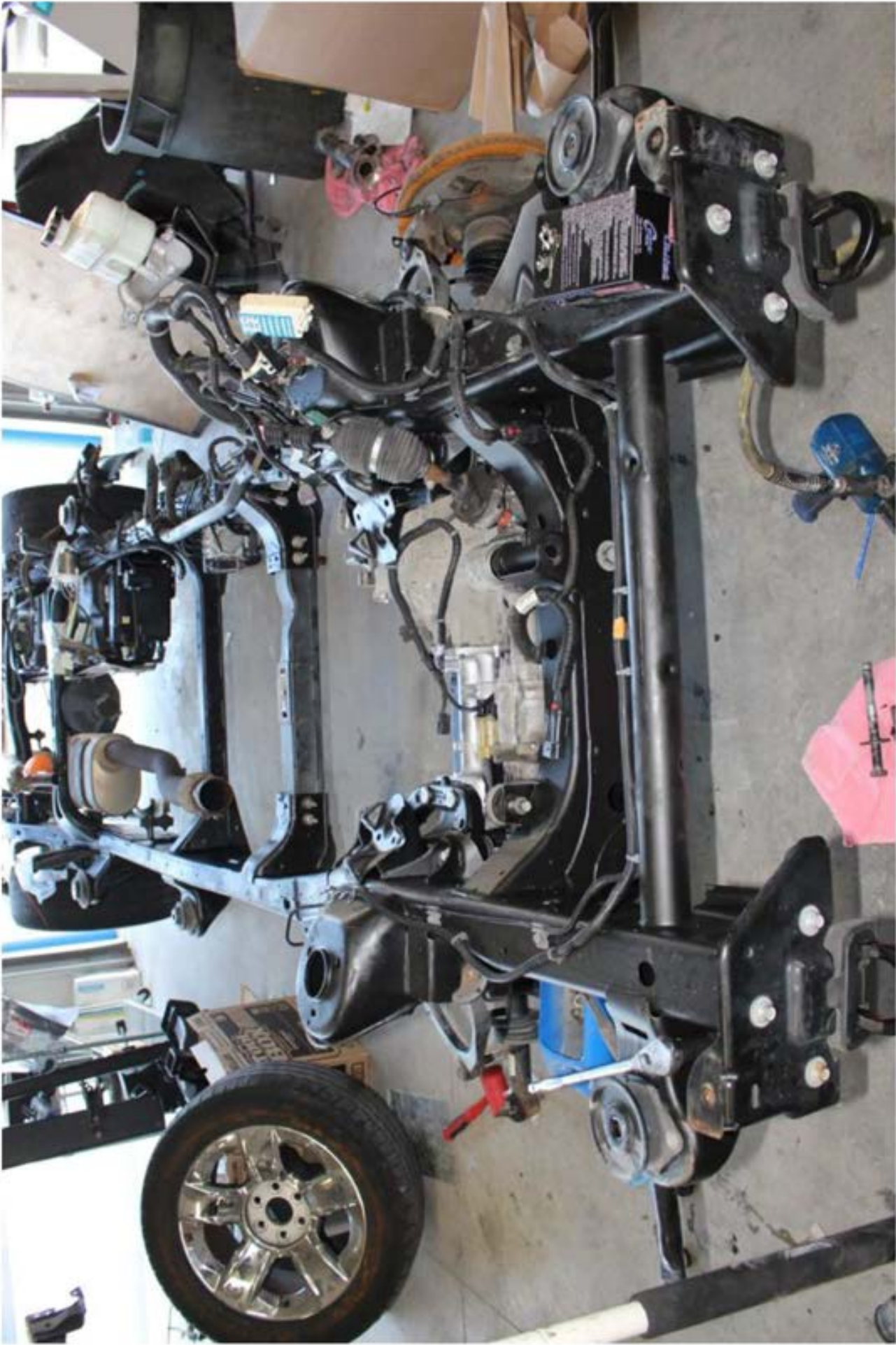
PE18-012

GM

3-27-2019

Q3





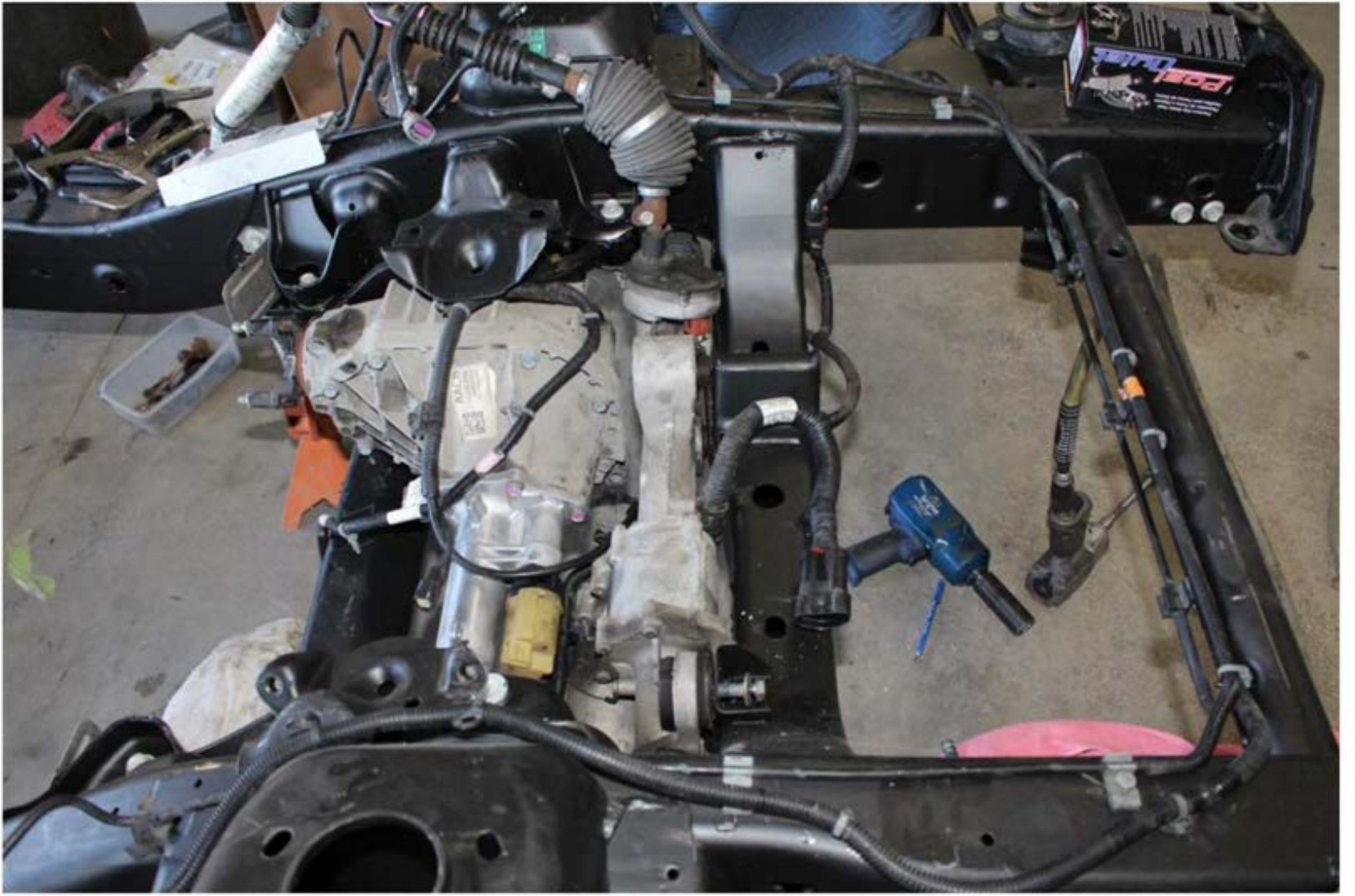






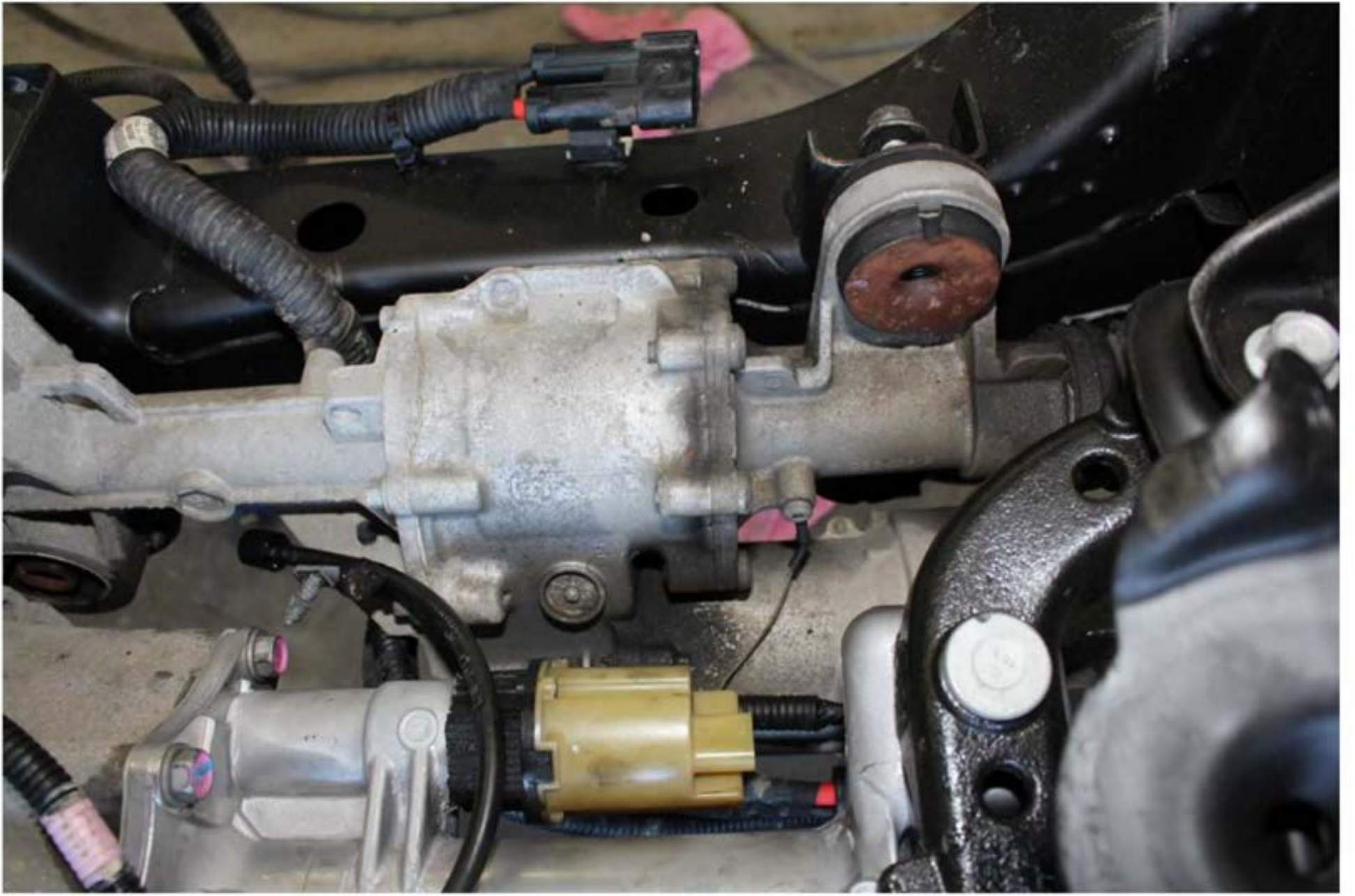




























3800087 1X
BLM052
14055-01389
LUNGT/M/L/TAS/MH
0578169164916
149124472481249























































ATTENTION
HAUTE PRESSION
NE PAS PERCER
0E18999
2315607



















































5455 L
289800000000P
2505858
4113041149208











































































































































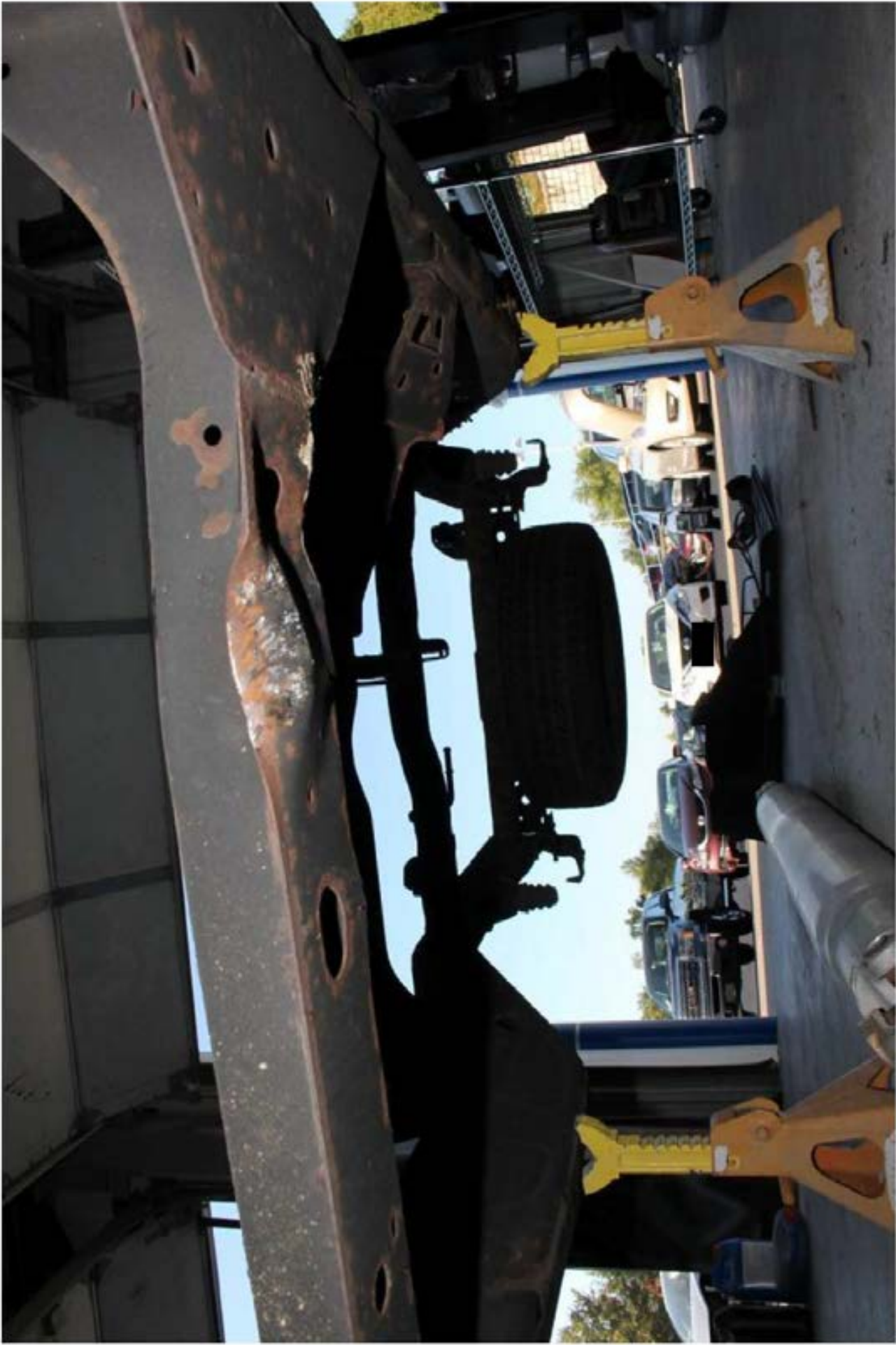










































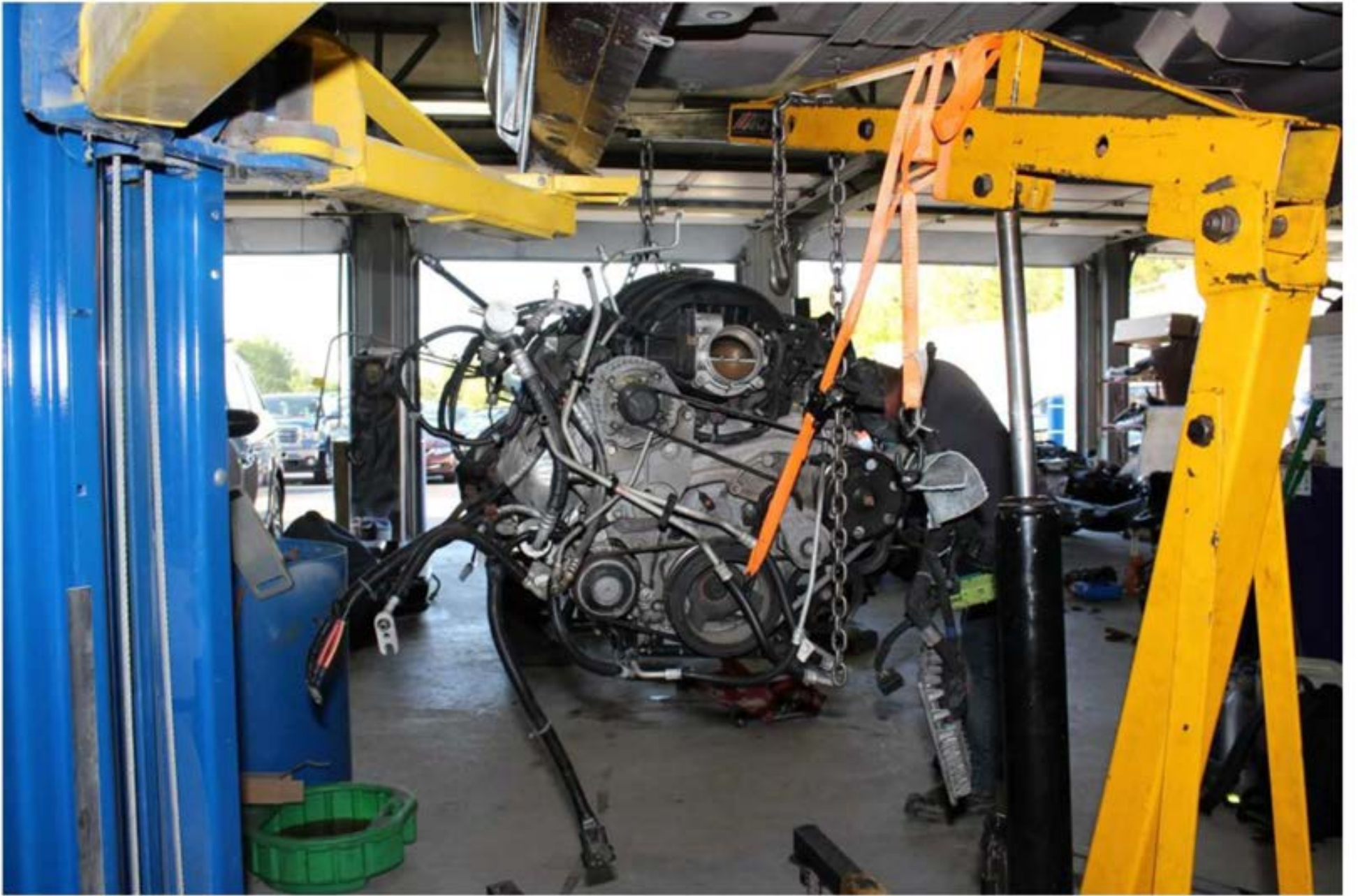


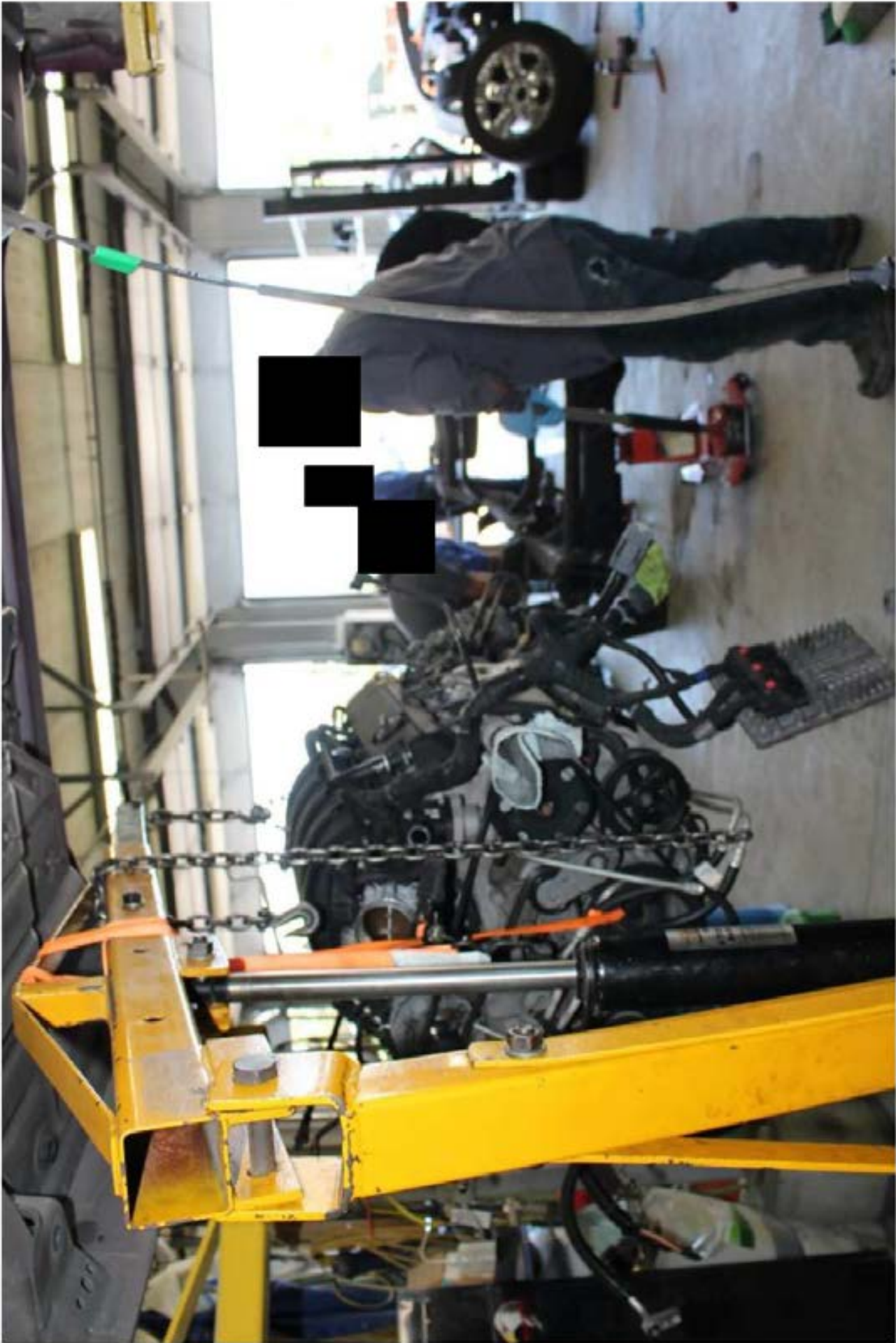




















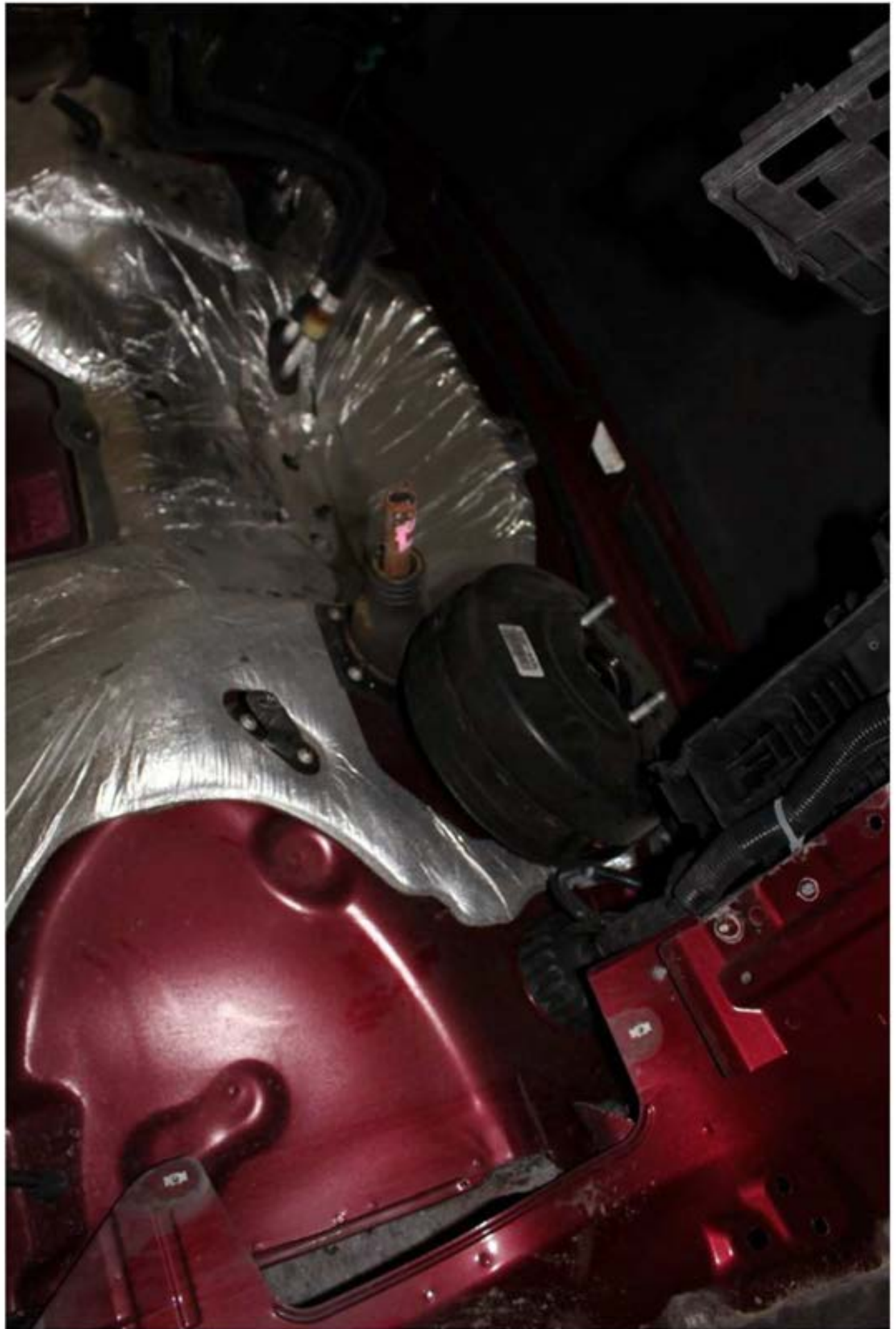
















1GCVKSEJ7EZ





MFD BY GENERAL MOTORS LLC

04/14

| | | |
|---------|----------|---------|
| GVWR | GAWR FRT | GAWR RR |
| 3266 KG | 1792 KG | 1860 KG |
| 7200 LB | 3950 LB | 4100 LB |

THIS VEHICLE CONFORMS TO ALL APPLICABLE U.S. FEDERAL MOTOR VEHICLE SAFETY STANDARDS IN EFFECT ON THE DATE OF MANUFACTURE SHOWN ABOVE.

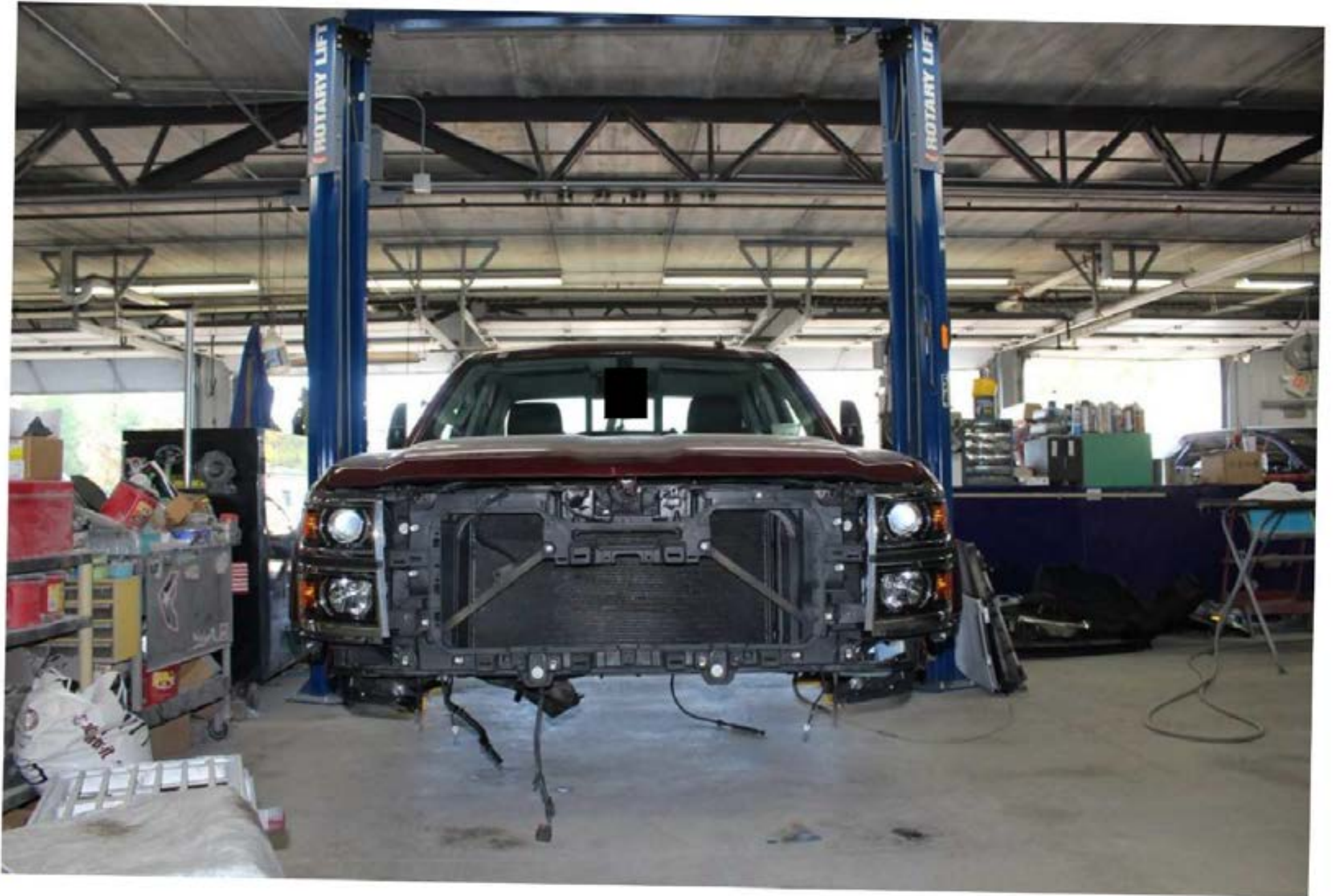
1GCVKSEJ7EZ

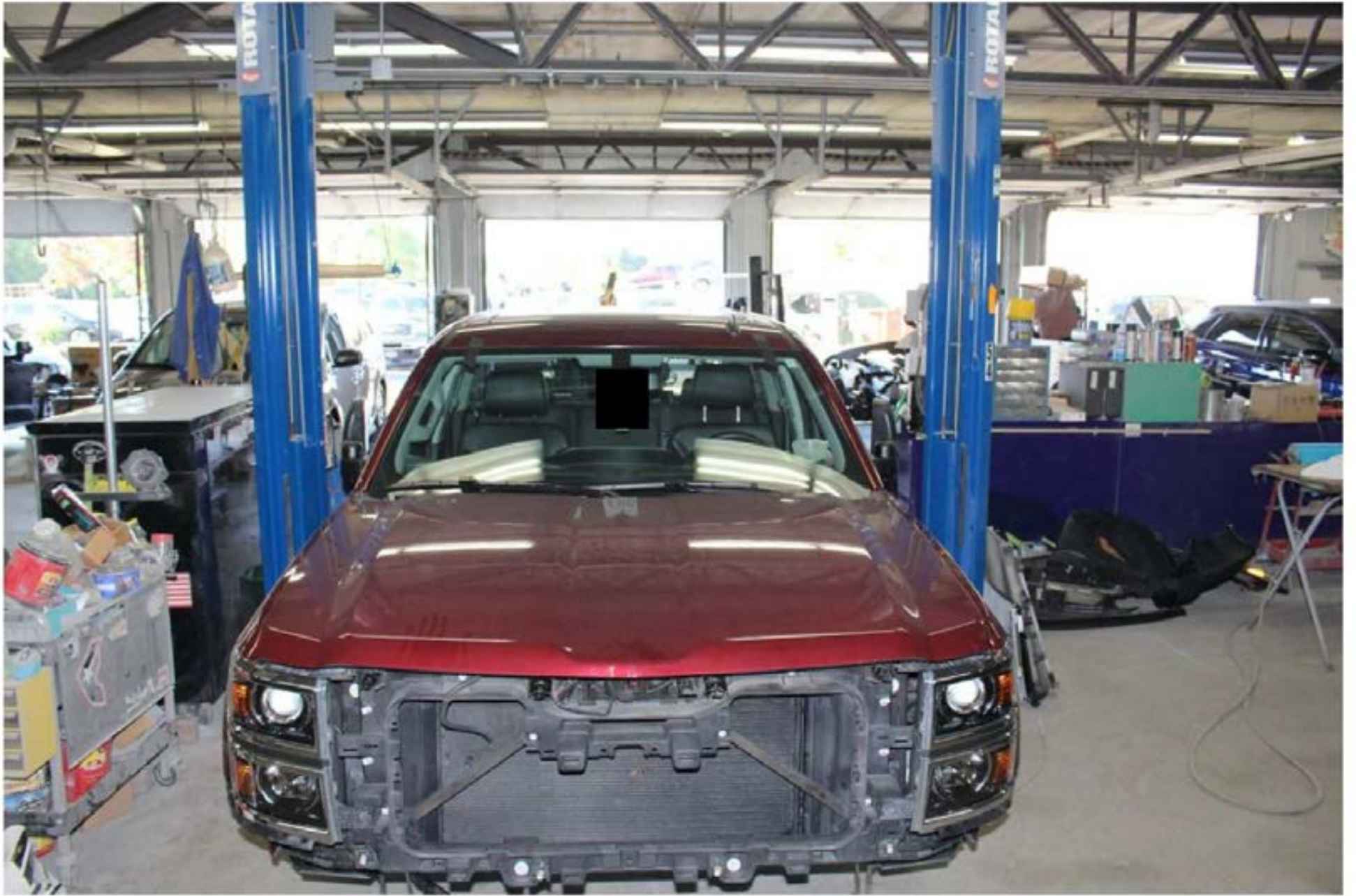
TYPE: TRUCK

MODEL: K15753

| KN9T | TIRE SIZE | SPEED RTG | RIM | COLD TIRE PRESSURE |
|------|------------|-----------|---------|--------------------|
| FRT | P275/55R20 | S | 20X9J | 220KPA(32PSI) |
| RR | P275/55R20 | S | 20X9J | 240KPA(35PSI) |
| SPA | P265/70R17 | S | 17X7.5J | 240KPA(35PSI) |

SEE OWNER'S MANUAL FOR MORE INFORMATION.









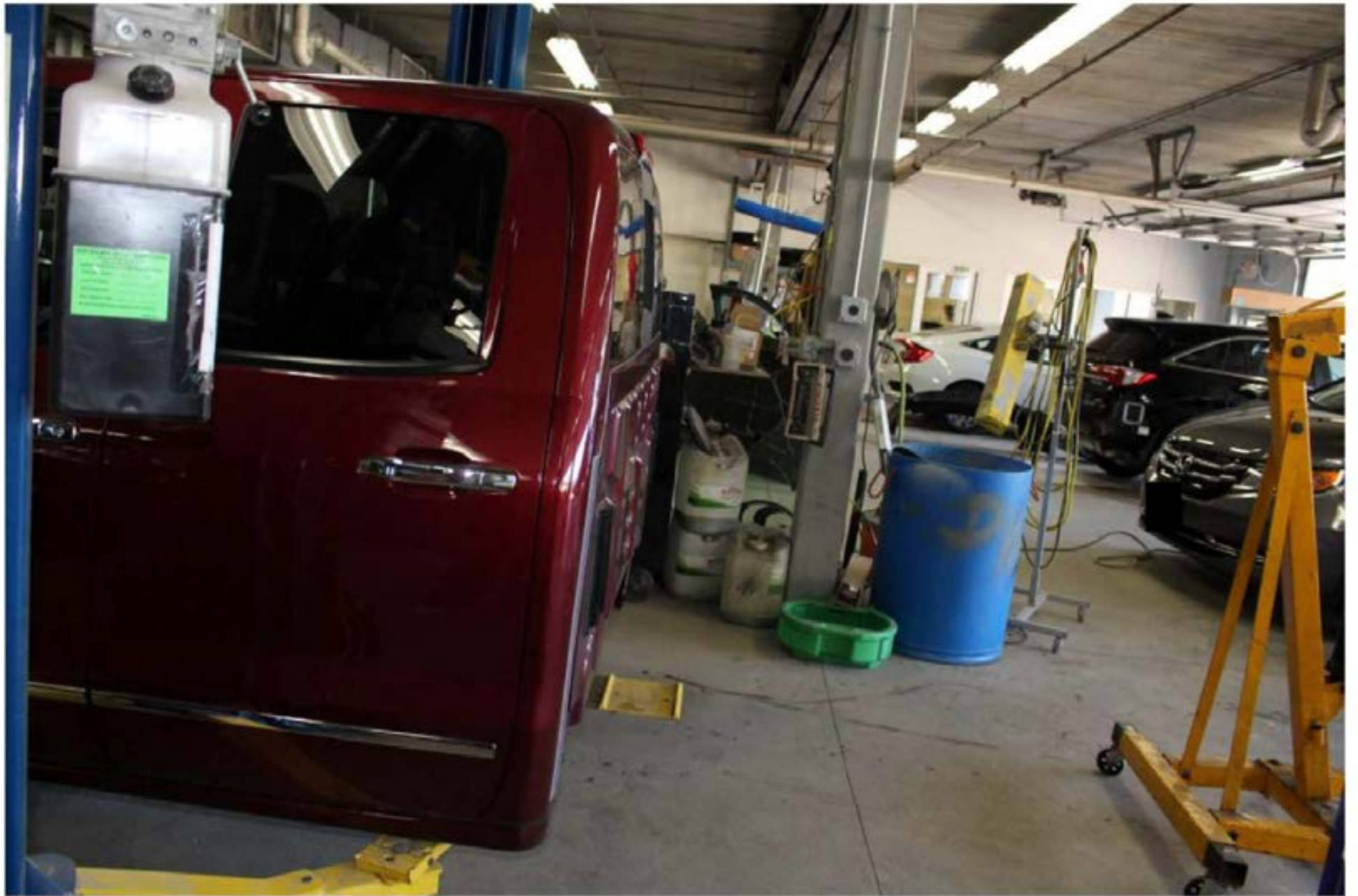














CLOSE HOOD
BEFORE
RAISING
VEHICLE

