

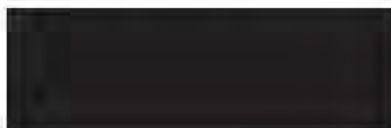
EA16-002

FLAT CHRYSLER

5-12-2016

ENCLOSURE 04

CAIR Backup

















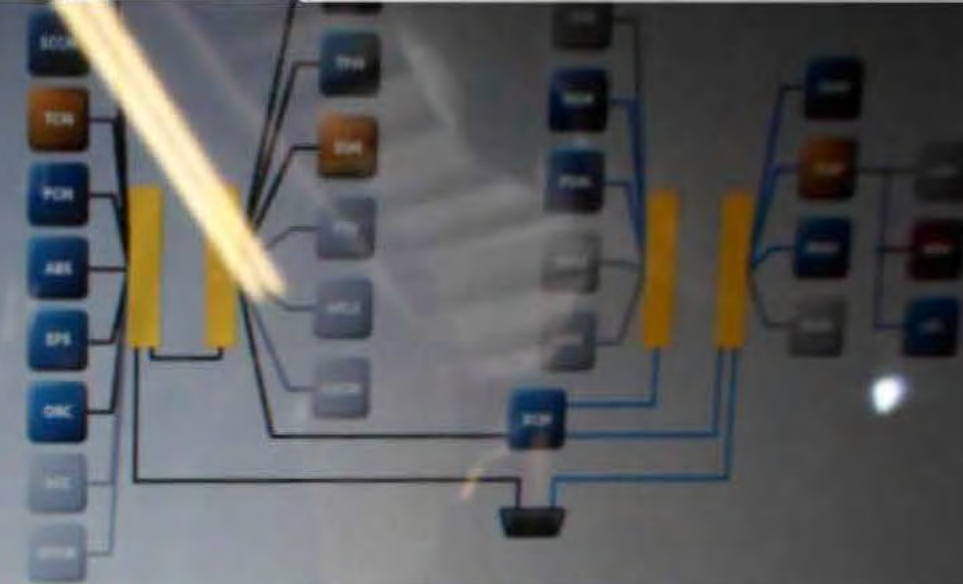
01527731AB-A

E1104M

E1104M

12.02 volts

- Active ECU
- Non-responsive ECU
- DTCs Present
- ECU Not Built
- Scanning ECU
- New Flash Available
- CAN-C
- CAN-L



DTCs **Diagnostic Procedures** **Customer Preferences** **Vehicle Preparations**

Click on row selection to view environmental data. Click on column heading to sort table.

View Freeze Frame

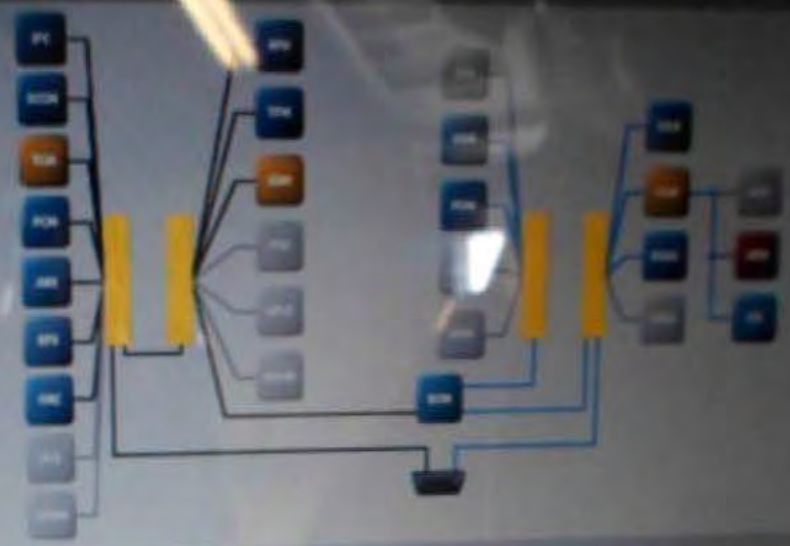
Active Stored Pending

ECU	Code	Status	Description
TCM	P1DC7-00	Stored	Clutch Temp Threshold Achieved - Shift Time Reduction
ESM	P1C86-14	Stored	PRNDL Display-Circuit Short to Ground or Open
TGW	B1570-00	Active	USB Communication



013 LX 3.6L
VIN: 2C3CCM [REDACTED]
Battery: 12.02 volts

- Legend
- Active ECU
 - Non-responsive ECU
 - DTCs Present
 - ECU Not Built
 - Scanning ECU
 - New Flash Available
 - CAN-C
 - CAN-HS



All DTCs Diagnostic Procedures Customer Preferences Vehicle Preparations

Double-click row selection to view environmental data. Click on column heading to sort table.

View Freeze Frame Clear DTCs

All Active Stored Pending

ECU	Code	Status	Description
TCM	P1DCT-00	Stored	Clutch Temp Threshold Achieved - Shift Time Reduction
ESM	P1C86-14	Stored	PRNDL Display-Circuit Short to Ground or Open
TCM	B1570-00	Active	USB Communication

11:04 AM



Click on the buttons to view the desired information. Click on column heading to sort table.

Environmental Data Snapshot Data

Environmental Data for TCM | P1DC7-00 Clutch Temp Threshold Achieved - Shift Time Reduction

Name	Value	Units
Test Failed	False	
Test Failed This Operation Cycle	False	
Pending DTC	False	
Confirmed DTC	True	
Test Not Completed Since Last Clear	False	
Test Failed Since Last Clear	True	
Test Not Completed This Operation Cycle	True	
Warning Indicator Requested	False	
DTC Extended Data Record Number - All	01	

Clear Stored DTCs

action-

A A

Click on the buttons to view the desired information. Click on column heading to sort table.

Environmental Data Snapshot Data

Environmental Data for TCM | P1DC7-00 Clutch Temp Threshold Achieved - Shift Time Reduction

Name	Value	Units
Test Failed Since Last Clear	True	
Test Not Completed This Operation Cycle	True	
Warning Indicator Requested	False	
DTC Extended Data Record Number - All	01	
Occurrence flag	Error	miles
Original Odometer Value	10969	miles
Most Recent Odometer Value	10973	
Frequency Counter	6	
Ignition Cycle Counter	3	

A A

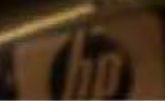
Clear Stored DTCs

table.

Reduction-

pen

Environmental Snapshot Data



Click on the buttons to view the desired information. Click on column heading to sort table.

Environmental Data Snapshot

Environmental Data for ESM | P1C86-14 PRN L Display-Circuit Short to Ground or Open

Name	Value	Units
Test Failed	False	
Test Failed This Operation Cycle	False	
Pending DTC	False	
Confirmed DTC	True	
Test Not Completed Since Last Clear	False	
Test Failed Since Last Clear	True	
Test Not Completed This Operation Cycle	False	
Warning Indicator Requested	False	
Occurrence flag	Error	

A A

Disconnect  

Click on the buttons to view the desired information. Click on column heading to sort table.

Environmental Data

Snapshot Data

Environmental Data for ESM | P1C86-14 PRNDL Display-Circuit Short to Ground or Open

Name	Value	Units
Occurrence flag	Error	
Original Odometer Value	8073	miles
Most Recent Odometer Value	8073	miles
Frequency Counter	1	
Ignition Cycle Counter	255	
Ignition Status	Ignition Run	
Operating Voltage	11.6	Volts
Sub-Faults Saved	00 00	
Sub-Faults Active	00 00	

A A

Click on the buttons to view the desired information. Click on column heading to sort table.

Environmental Data

Environmental Data for TGW | B1570-00 USB Communication-

Name	Value	Units
Test Failed	True	
Test Failed This Operation Cycle	False	
Pending DTC	False	
Confirmed DTC	True	
Test Not Completed Since Last Clear	False	
Test Failed Since Last Clear	False	
Test Not Completed This Operation Cycle	False	
Warning Indicator Requested	False	
DTC Extended Data Record Number - All	01	

* A

Click on the buttons to view the desired information. Click on column heading to sort table.

Environmental Data

Snapshot Data

Environmental Data for TGW | B1570-00 USB Communication-

Name	Value	Units
Test Failed Since Last Clear	False	
Test Not Completed This Operation Cycle	False	
Warning Indicator Requested	False	
DTC Extended Data Record Number - All	01	
Occurrence flag	Occurrence	
Original Odometer Value	10588	miles
Most Recent Odometer Value	10588	miles
Frequency Counter	1	
Ignition Cycle Counter	0	



TCM View

Click on tabs to access various ECU operations and information for the selected ECU.



Overview

Name:
Transmission Control Module

Flash Part Number:
48046526AL

Bus Type:
CAN C

Hardware Version:
04.02.1F

Software Version:
00: 12.24.00, #1: 12.24.00

Original VIN
[REDACTED]

- Flash
- Data
- DTCs**
- Actuators
- System Tests
- Misc Functions
- ECU Details

Double-click row selection to view environmental data. Click on column heading to sort table.

All Active Stored Pending

View Freeze Frame

View Event Data

Clear

	ECU	Code	Status	Description
<input checked="" type="checkbox"/>	TCM	P1D07-00	Stored	Clutch Temp Threshold Achieved - Shift Time Reduction
<input type="checkbox"/>				
<input type="checkbox"/>				
<input type="checkbox"/>				
<input type="checkbox"/>				