

EA16-002

FLAT CHRYSLER

5-12-2016

ENCLOSURE 04

CAIR Backup



2013 LD 3.6L | VIN: 2C3CDXBG0DH [REDACTED]

ECU	Code	Status	Description
TCM	U1467-00	Stored	Implausible Driver Shift Request Signal Received on CAN and D-PT CAN-
TCM	U0103-00	Stored	Lost Communication With Electric Gear Shift Module-
TCM	U11C3-00	Stored	ESM Lost Communication With TCM on D-PT CAN-
TCM	P1915-00	Stored	Transmission Inhibited Remote Start-
ESM	U1175-00	Stored	Lost Ignition Status Message-
ESM	P0607-00	Stored	ECU Internal Performance
ESM	P1C86-14	Stored	PRNDL Display-Circuit Short to Ground or Open

Device Serial Number: WSP-03556

Device Software Version: 1.2.1

Thu Jan 9 2014















Challenger Lifts

936







Lenger Lift

CHARGER

DODGE

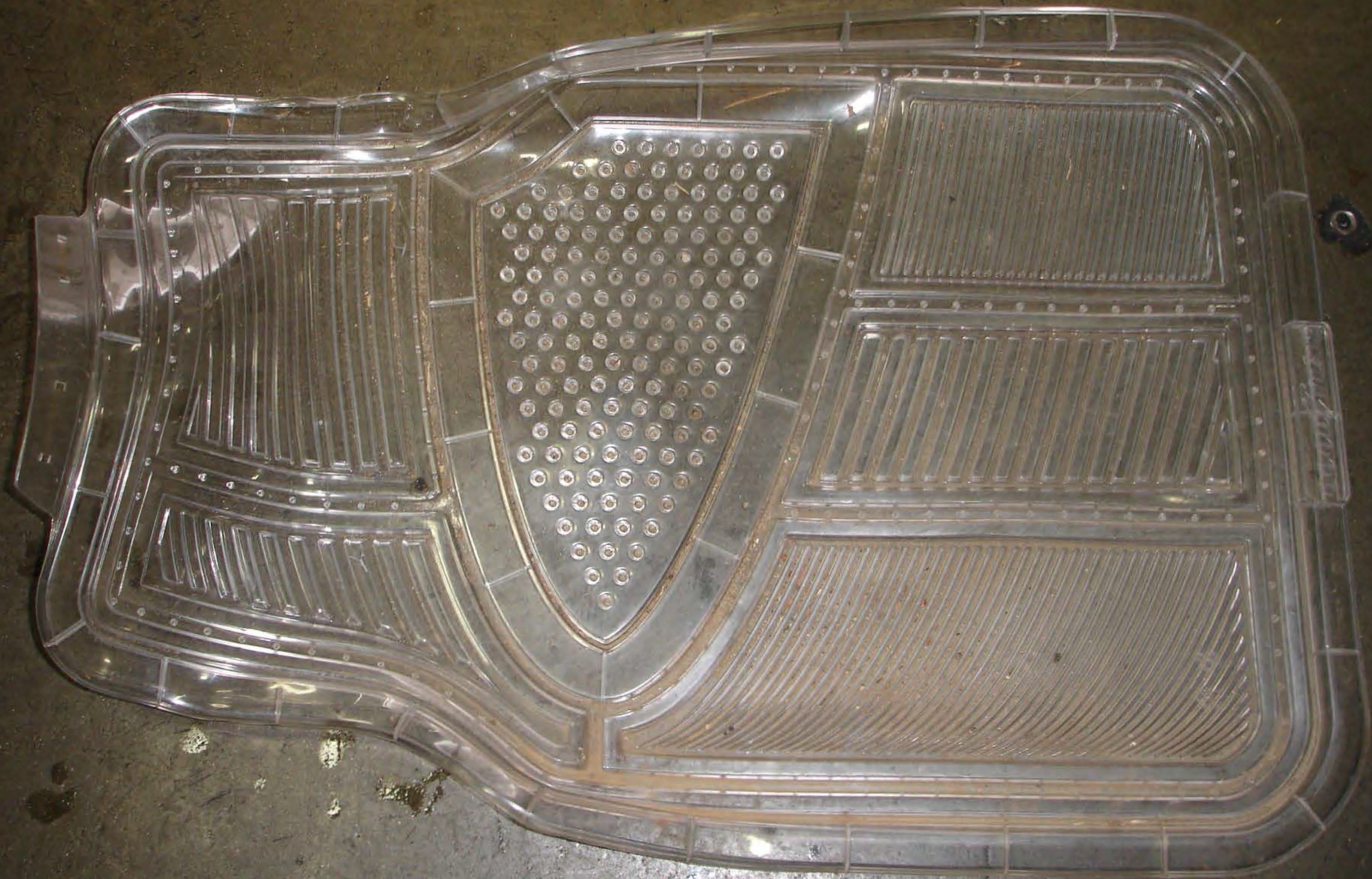


PUSH
ON/OFF

10001

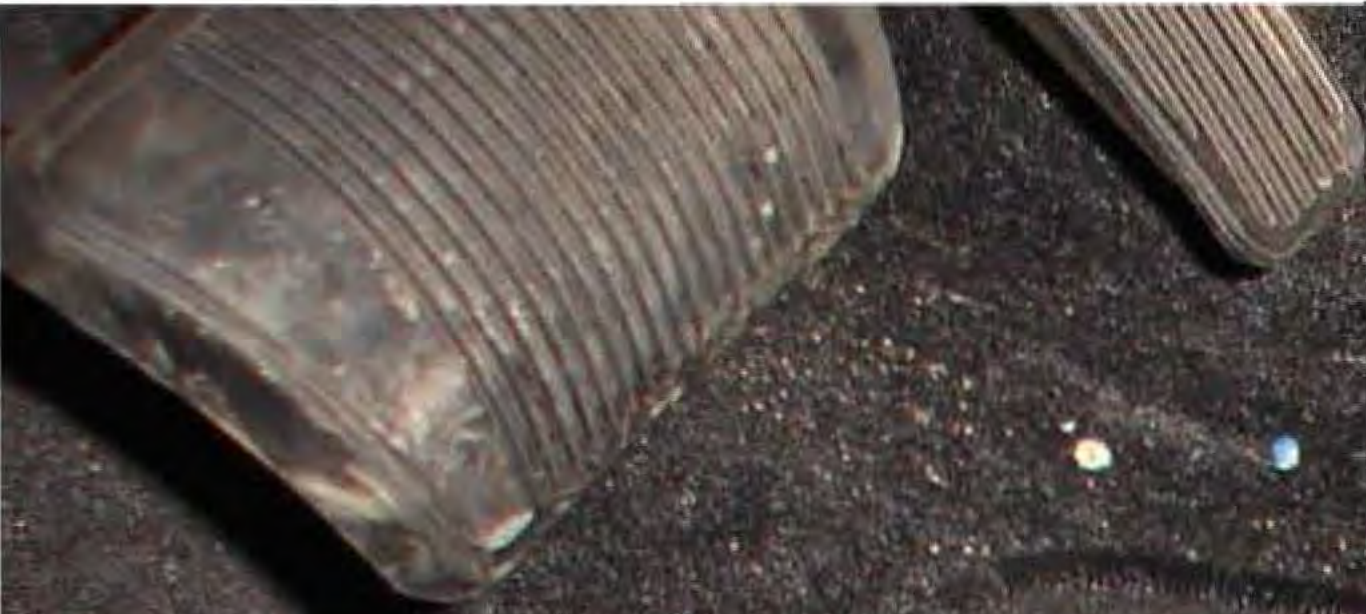








DODGE



MFD BY CHRYSLER GROUP LLC

DATE OF MFR(BUILT): SEP 12

GAWR: 02314 KG

GAWR: 01275 KG

GAWR: 01275 KG

05100 LB

FRONT: 02810 LB

REAR: 02810 LB

THIS VEHICLE CONFORMS TO ALL APPLICABLE U.S.A. FEDERAL MOTOR VEHICLE SAFETY,
BUMPER AND THEFT PREVENTION STANDARDS IN EFFECT ON
THE DATE OF MANUFACTURE SHOWN ABOVE.



VIN: 2C3CDXBG00 [REDACTED]

TYPE: PASSENGER CAR

MDH: 091722 033AA

PAINT: PW7

TRIM: B7X9

VEHICLE MADE IN CANADA

4658843