

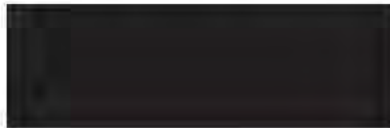
EA16-002

FLAT CHRYSLER

5-12-2016

ENCLOSURE 04

CAIR Backup











317-15
SERIAL NO.
STUCKAL 1090
MODEL NO.

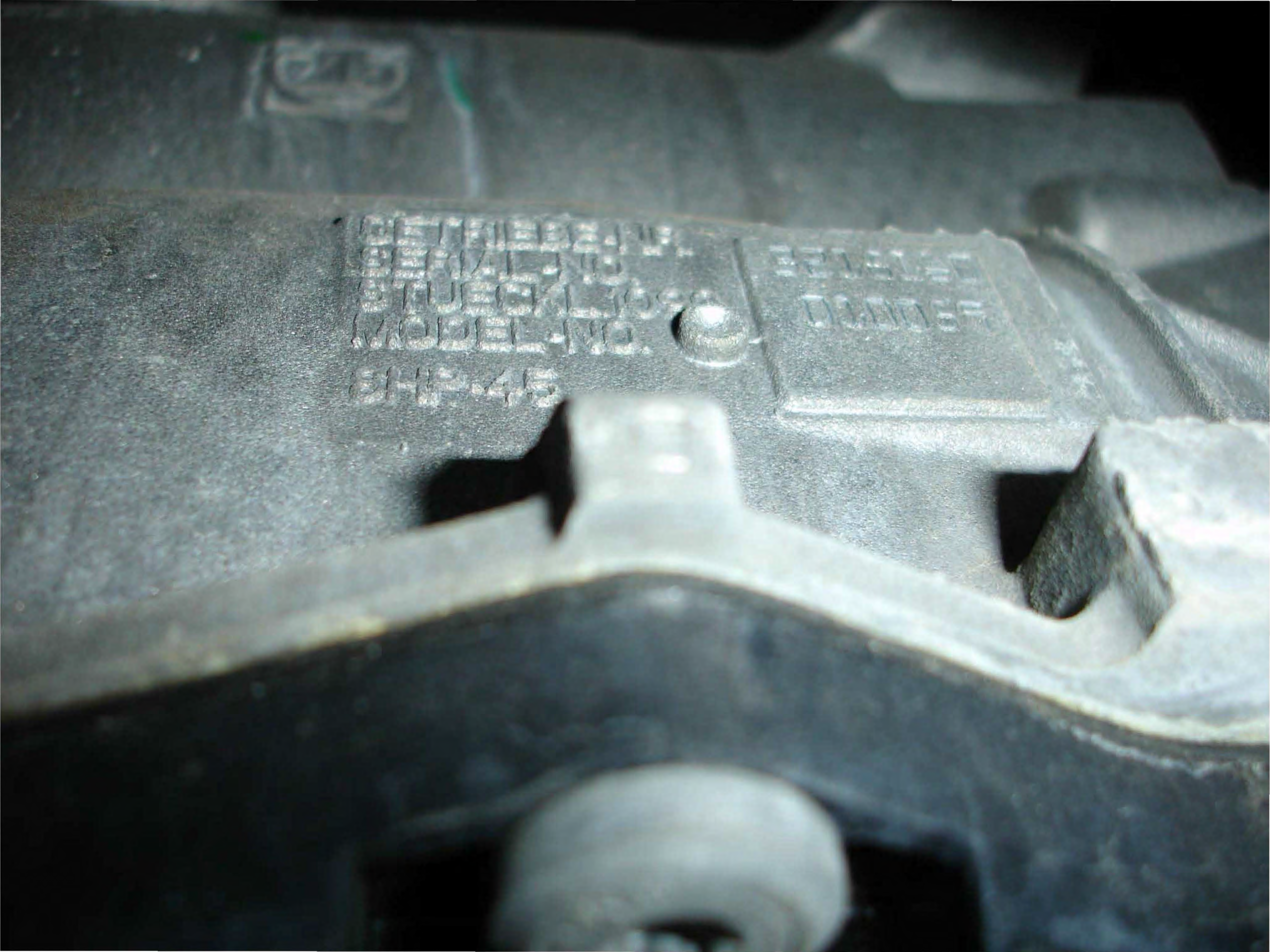
3218160
0110057



GETTLEBENT
STREITUNG
STREITUNG
STREITUNG
45

3214160
0110059





ZF Getriebe GmbH

ZF 0501 218 048 a

>PA66-GF 35<

218 048 a

ZF Getriebe, GmbH

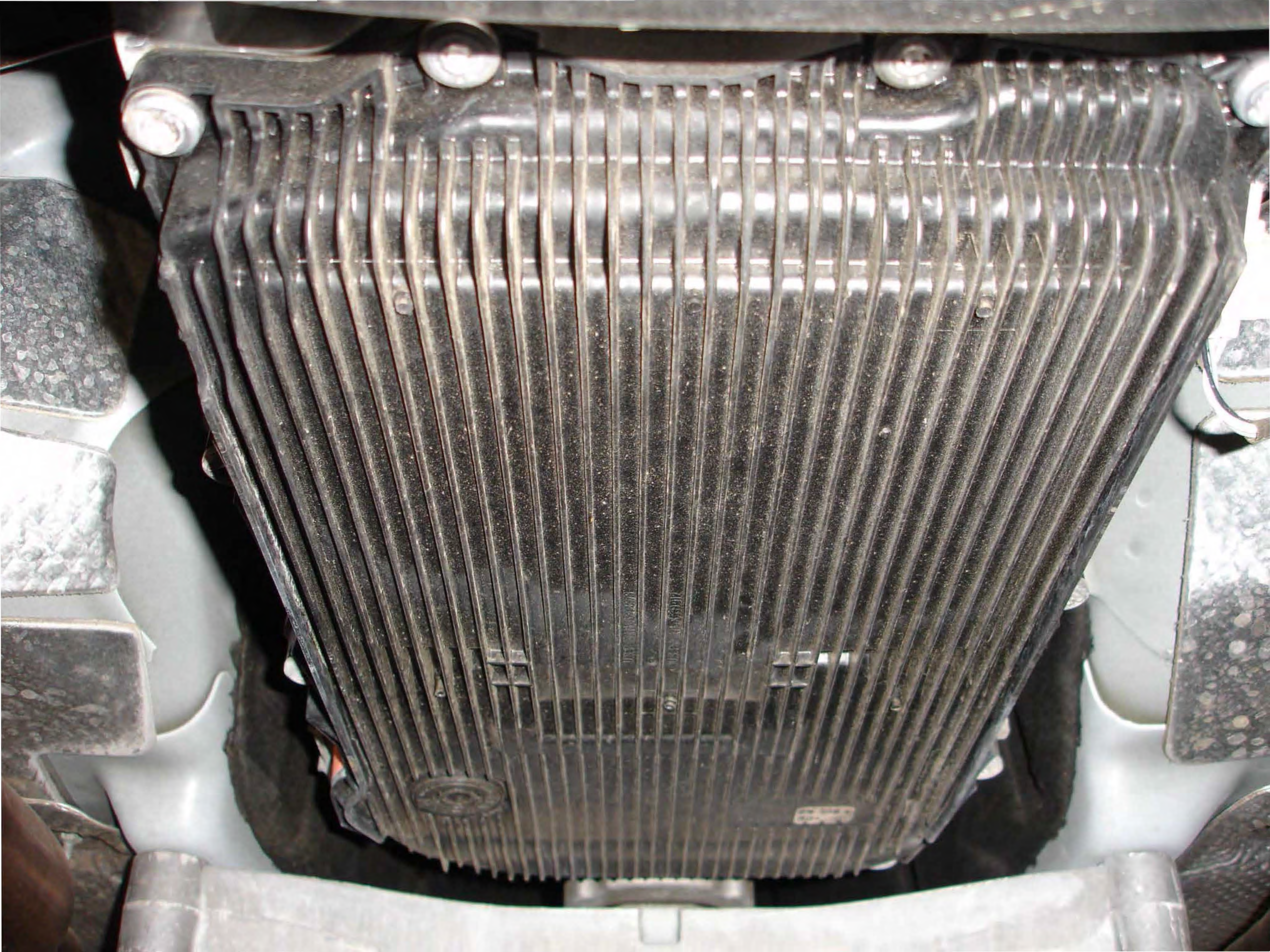
ZF 0501 218 049 a

PA66-GF 35<









21BMW5294225

BMW
5294225





2013 LD 3.6L | VIN: 2C3CDXBG0DH [REDACTED]

ECU	Code	Status	Description
TCM	U1467-00	Stored	Implausible Driver Shift Request Signal Received on CAN and D-PT CAN-
TCM	U0103-00	Stored	Lost Communication With Electric Gear Shift Module-
TCM	U11C3-00	Stored	ESM Lost Communication With TCM on D-PT CAN-
TCM	P1915-00	Stored	Transmission Inhibited Remote Start-
ESM	U1175-00	Stored	Lost Ignition Status Message-
ESM	P0607-00	Stored	ECU Internal Performance-
ESM	P1C86-14	Stored	PRNDL Display-Circuit Short to Ground or Open

Device Serial Number: WSP-03556

Device Software Version: 1.2.1

Thu Jan 9 2014

2013 LD 3.6L | VIN: 2C3CDXBG0DH5 [REDACTED]

ECU	Code	Status	Description
TCM	U1467-00	Stored	Implausible Driver Shift Request Signal Reception on CAN and D-PT CAN
TCM	U0103-00	Stored	Lost Communication Electric Gear Shift Module-
TCM	U11C3-00	Stored	ESM Lost Communication With TCM on D-PT CA
TCM	P1915-00	Stored	Transmission Inhibited Remote Start-
ESM	U1175-00	Stored	Lost Ignition Status Message-
ESM	P0607-00	Stored	ECU Internal Perform
ESM	P1C86-14	Stored	PRNDL Display-Circuit Short to Ground or C

Device Serial Number: WSP-03556

Device Software Version: 1.2.1

Thu Jan 9 2014