

PE15-030

FLAT CHRYSLER

11-24-2015

ENCLOSURE 4

CAIR Backup

27794762

View Freeze Frame

View Event Data

Clear Stored DTCs

ECU	Code	Status	Description
ORC	B212C-16	active	Ignition Run/Start Input-Circuit Open
ORC	B0095-87	active	Right Frontal Acceleration Sensor-Missing Message
ORC	B0090-87	active	Left Frontal Acceleration Sensor-Missing Message
ORC	U1110-00	stored	Lost Vehicle Speed Message-
ORC	B212C-16	stored	Ignition Run/Start Input-Circuit Voltage Below Threshold
ORC	B212D-16	stored	Ignition Run Only Input-Circuit Voltage Below Threshold
ORC	B21DD-16	stored	System Voltage-Circuit Voltage Below Threshold
DDM	B210C-16	stored	Battery Voltage Input-Circuit Voltage Below Threshold
DDM	B21DD-8	stored	System Voltage-Signal Below Allowable Range
PDM	B210C-16	stored	Battery Voltage Input-Circuit Voltage Below Threshold
PDM	B21DD-8	stored	System Voltage-Signal Below Allowable Range
PDM	B25AF-2A	stored	Door Lock/Unlock Switch-Stuck
IPC	U0159-00	active	Lost Communication With Parking Assist Control Module-
IPC	B21DD-8	stored	System Voltage-Signal Below Allowable Range

A A



Login **Offline**



View Freeze Frame

View Event Data

Clear Stored DTCs

ECU	Code	Status	Description
PCM	B2100-00	stored	System Voltage-Signal Below Allowable Range
SCCM	C212A-16	stored	System Voltage-Circuit Voltage Below Threshold
SCCM	C2129-16	stored	Battery Voltage-Circuit Voltage Below Threshold
SCCM	U0100-00	active	Lost Communication With ECM/PCM-
BCM	B2335-15	active	Horn Control-Circuit Short to Battery or Open
BCM	B2316-15	active	Wiper High/Low Control-Circuit Short to Battery or Open
BCM	B2103-15	active	Ignition Run/Start 1 Control-Circuit Short to Battery or Open
BCM	B231A-15	active	Rear Wiper Motor Control-Circuit Short to Battery or Open
BCM	B2121-15	active	Ignition Run Control 1-Circuit Short to Battery or Open
BCM	U0100-00	active	Lost Communication With ECM/PCM-
BCM	U1008-00	stored	LIN 1 Bus-
BCM	B2119-15	stored	Ignition Run/Acc/SPAD Control-Circuit Short to Battery or Open
BCM	B2312-15	active	Wiper On/Off Control-Circuit Short to Battery or Open
BCM	B212E-15	stored	Ignition Run/Acc Control-Circuit Short to Battery or Open

A A



Login **Off-line**

Windows taskbar with Start button, search bar "Ask me anything", and taskbar icons for Phone, Mail, Edge, File Explorer, Store, Internet Explorer, PDF, Word, and other applications.

View Freeze Frame View Event Data Clear Stored DTCs

ECU	Code	Status	Description
BCM	B2312-15	active	Wiper On/Off Control-Circuit Short to Battery or Open
BCM	B212E-15	stored	Ignition Run/Acc Control-Circuit Short to Battery or Open
BCM	B2199-16	stored	Battery Voltage-Circuit Voltage Below Threshold
BCM	B163E-15	active	Front Right Turn Lamp Control-Circuit Short to Battery or Open
BCM	P0070-15	active	Ambient Air Temperature Sensor Circuit-Circuit Short to Battery or Open
BCM	U0264-00	active	Lost Communication With Camera Module - Rear-
BCM	U0213-00	active	Lost Communication with Interior Mirror Control Module-
BCM	B162E-15	active	Right Low Beam Control-Circuit Short to Battery or Open
BCM	B16C3-15	active	Front Right Sidemarket Lamp Control-Circuit Short to Battery or Open
RADIO	B210A-16	pending	System Voltage Low-Circuit Voltage Below Threshold
RADIO	U0011-00	stored	CAN Interior Bus Off Performance-
RADIO	B222C-00	active	Vehicle Configuration Not Programmed-
RADIO	U0208-00	active	Lost Communication With Heated Seat Control Module-
RADIO	U0100-00	active	Lost Communication With ECM/PCM-

Environment

Name
Test Failed
Test Failed
Pending DT
Confirmed
Test Not C
Test Failed
Test Not C
Warning In
DTC Exten
Occurrence
Original O
Most Rece
Frequency

Login **Off-line**

Ask me anything

red DTCs

Environmental Data for RADIO | U0100-00 Lost Communication With ECM/PCM-

Environmental Data | Snapshot Data

Name	Value	Units
TestFailed	True	
TestFailedThisMonitoringCycle	False	
Pending DTC	True	
Confirmed DTC	True	
Test Not Completed This Monitoring Cycle	True	
Warning Indicator Requested	False	
DTCExtendedDataRecordNumber	Record \$01-\$8f	
Occurance Flag	Error	
Original Odometer Value	15688	miles
Most Recent Odometer Value	15688	miles
Frequency Counter	1	
Ignition Counter	0	
Event Counter	Event counter for clear DTC memory	

A A



Disconnect

Warnings: 0 Errors: 0

Windows taskbar with icons for Internet Explorer, Utorrent, Firefox, Chrome, Word, and other applications. System tray shows the time 11:39 AM and date 9/18/2015.



Table below contains all DTCs and information for the selected ECU.

- Flash
- Data
- DTCs**
- Actuators
- System Tests
- Misc Functions
- ECU Details

Double-click row selection to view environmental data. Click on column heading to sort table.

All | Active | Stored | Pending

View Details

ECU	Code	Status	Description
ESM	P1C8B-16	stored	Battery Voltage-Circuit Voltage Below Threshold
ESM	P1C8C-16	stored	System Voltage-Circuit Voltage Below Threshold
ESM	P0928-00	stored	BTSI Control-
ESM	U0100-00	active	Lost Communication With ECM/PCM

ESM View

Tools to access various ECU operations and information for the selected ECU.

- Flash
- Data
- DTCs**
- Actuators
- System Tests
- Misc Functions
- ECU Details

Double-click row selection to view environmental data. Click on column heading to sort table.

All | Active | Stored | Pending

View Freeze

	ECU	Code	Status	Description
	ESM	P1C8B-16	stored	Battery Voltage-Circuit Voltage Below Threshold
	ESM	P1C8C-16	stored	System Voltage-Circuit Voltage Below Threshold
	ESM	P0928-00	stored	BTSI Control-
	ESM	U0100-00	active	Lost Communication With ECM/PCM-

ESM View

Click on the buttons to view ECU operations and information for the selected ECU.

- Flash
- Data
- DTTs**
- Actuators
- System Tests
- Misc Functions
- ECU Details

Double-click row selection to view environmental data. Click on column heading to sort table.

All Active Stored Pending

	ECU	Code	Status	Description
	ECU	P1C3B-16	stored	Battery Voltage Circuit Voltage Below Threshold
	ECU	P1C3C-16	stored	System Voltage Circuit Voltage Below Threshold
	ECU	P1B03-00	stored	ETS Control
	ECU	U0105-00	active	Lost Communication with ECUPC



PCM View

Click on data to access vehicle ECU operations and information for the selected ECU.



- Overview
- Name
 - Flash Part Number
 - Bus Type
 - Hardware Version
 - Software Version
 - ECU Part Number
 - ECU Code
 - Software Number
 - Hardware Number
 - Original IWK
 - Current IWK
 - Manufacturer
 - Version & Version
 - Country Code
 - ECU Count

- Flash
- Data
- DTCS**
- Adaptation
- System Tests
- Misc Functions
- ECU Details

Double-click row selection to view environmental data. Click on column heading to sort table.

Active Stored Pending

ECU	Code	Status	Description
Retrieving Data, please wait...			

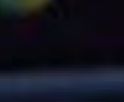
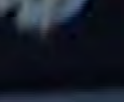
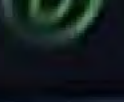
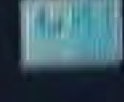
ECU Config DTC Yes
 VIN Mismatch DTC No

ECU ▲	Active	Electrical Faults Active	Electrical Faults Stored	Communication Faults Active	Communication Faults Stored	Signal Faults Active	Signal Faults Stored	Logged Against Faults Active	Logged Against Faults Stored
ABS	true	0	0	0	1	0	0	0	1
BCM	true	0	0	3	0	0	0	0	1
DDM	true	0	0	0	0	0	0	0	0
ESM	true	0	0	1	0	0	0	0	0
HVAC	true	0	0	0	0	0	0	0	0
HVACR	true	0	0	0	0	0	0	0	0
ICS	true	0	0	0	0	0	0	0	0
IPC	true	0	0	1	0	0	0	0	0
ORC	true	0	0	0	0	1	0	0	0
PDM	true	0	0	0	0	0	0	0	0
RADIO	true	0	1	2	0	0	0	0	0
RFH	true	0	0	1	0	0	0	0	0
SECM	true	0	0	1	0	0	0	0	0
TCM	true	0	0	1	0	0	0	0	0
TPM	true	0	0	1	2	0	0	0	0

Login Off-line

Ask me anything 🔊 📺 e 📁 🏠 📄 📄 📄 🌐 U 🎮 🌈 🌐 🌐 📊 📊

Name	Value	Units
EEPROM Check - Error Flags	(True) valid (No fault in monitored RAM)	
Status Ignition	On	
Shift Type	Gear 1	
Converter Clutch	Converter Clutch open	
Output Shaft	Outputshaft o.k.	
Turbine	Turbine o.k.	
P Sensor	P Sensor o.k.	
Temp Sensor	Temp. Sensor o.k.	
Chip Temp Sensor	Chip Temp. Sensor o.k.	
Oil Temp Tolerance	Oil Temp. wide tolerance	
Drivetrain	Drivetrain power on	
Torque Reduction	0	ft-Lbs
Actual driver mode	manuell	
Gearbox Position		
Buffered Gearbox Position	D	
Buffered driving direction		
Interim value of the display		
Buffered flag for Mech-Limphome		



Name	Value	Units
Torque Reduction	0	Ft-Lbs
Actual driver mode	manuell	
Gearbox Position		
Buffered Gearbox Position	D	
Buffered driving direction		
Interim value of the display		
Buffered Flag for Mech-Limhome		
Shift Solenoid A Current	0	mA
Shift Solenoid D Current	848	mA
Shift Solenoid B Current	848	mA
Shift Solenoid E Current	848	mA
Shift Solenoid C Current	848	mA
Torque Converter Clutch Current	48	mA
Pressure Control Solenoid Current	48	mA
Park Solenoid Current	48	mA
Current OUT10	1000	mA
Current OUT11	0	mA
CAN-Output for the display		

login

Off-line





Press Clutch
and
Push Button
to Start

15695 mi









VACUUM BRAKE 04581653M

DAS'WOL

D2877

0271428
82147120
0872480





















1732160600000
001741459
F385100
3.5.2014

















DODGE







Mr. John Doe
1234 Main St
New York, NY 10001



inch/mm

32.51 mm

OFF ON

ZERO

10

20

30

100

1

1

4

L- FRONT

