

PE15-030

FLAT CHRYSLER

11-24-2015

ENCLOSURE 4

CAIR Backup





Loss of Comm Report

WITECH

Vehicle Information

Vehicle 2014 WK 3.6L

Odometer 41854.9 miles

VIN 1C4RJFCG5E0 [REDACTED]

Original VIN 1C4RJFCG5E0 [REDACTED]

Publication Date Thu Aug 20 2015

AMP	true	0	0	0
A5CM	true	0	0	0



83° F

0

MPH

SW

Vehicle  
Not in  
Park

S  
D  
N  
R  
P



41854 mi

ESM

Name	Value
ECU Serial Number	TU1140300032
HW - year	11
HW - week	23
HW - patch level	00
ECU Part Number	68166105AE
Hardware Part Number	68166105AA
Model Year	2014
Vehicle Line	WK
Body Style	Station Wagon
Country Code	USA

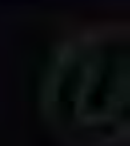
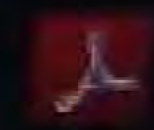
A

ESM

Login

Off-line

Ask me anything

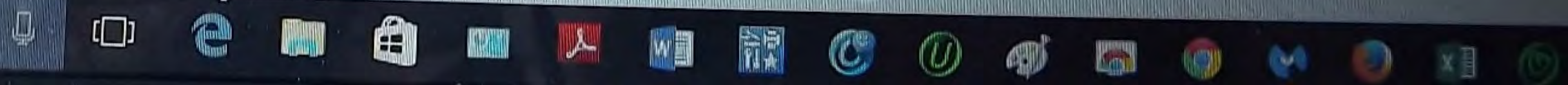


- Include DTC Summary Information
- Include Environmental Data Summary Information

ECU	Name	Original VIN	Current VIN	Part Number	Flash Part Number	H/W Version	S/W Version
ABS	Anti Lock Brakes	1C4RJFCG5EC	1C4RJFCG5EC	04779976AL	04779976AL	13.23.00	#0: 13.19.03
AFLS	Adaptive Front Lighting System	Unknown origin	Invalid VIN	68111000JJ	68111000JJ	0C.40.0A	#0: 13.03.04
AMP	Amplifier	1C4RJFCG5EC	1C4RJFCG5EC	05091383AI	05091383AI	0A.17.01	#0: 13.13.00
ASCM	Air Suspension Control Module	1C4RJFCG5EC	1C4RJFCG5EC	68109987AD	68109987AD	09.1.00	#2: 13.02.00 ,#1: 13.02.00 ,#0: 13.02.00
BCM	Body Controller	1C4RJFCG5EC	1C4RJFCG5EC	68236158AA	68236158AA	10.20.0	#0: 14.18.48
DDM	Driver Door Module	1C4RJFCG5EC	1C4RJFCG5EC	68155773AD	68155773AD	11.30.00	#0: 12.48.01
DTCM	Drive Train Control Module	1C4RJFCG5EC	1C4RJFCG5EC	05150732AD	05150732AD	09.17.00	#0: 13.12.00
EDM	External Disc Module	1C4RJFCG5EC	1C4RJFCG5EC	05091245AC	05091245AC	0C.3.00	#0: 12.50.00
EPS	Electric Power Steering	1C4RJFCG5EC	1C4RJFCG5EC	05154663AB	05154663AB	12.44.00	#1: 12.42.00 ,#0: 12.42.00
ESM	Electronic Shifter	1C4RJFCG5EC	1C4RJFCG5EC	68166105AE	68166105AE	11.23.00	#1: 13.08.00 ,#0: 13.08.00
HSM	Heated Seat Module	1C4RJFCG5EC	1C4RJFCG5EC	68058083AJ	68058083AJ	0B.21.00	#0: 0D.10.00
HVAC	Heat, Ventilation and A/C	1C4RJFCG5EC	1C4RJFCG5EC	68110610AI	68110610AI	2012.19.01	#2: 2013.25.01 ,#1: 2013.25.01 ,#0: 2013.25.01
ICS	Integrated Center Stack	1C4RJFCG5EC	1C4RJFCG5EC	05091840AE	05091840AE	0C.48.09	#0: 13.04.19
IPC	Instrument Panel Cluster	Unknown origin	1C4RJFCG5EC	05091678BG	05091678BG	12.18.00	#9: 85.19.16 ,#8: 255.Invalid Value.255
MSM	Memory Seat Module	1C4RJFCG5EC	1C4RJFCG5EC	05026617AC	05026617AC	0C.5.00	#0: 12.05.00
ORC	Occupant Restraint	1C4RJFCG5EC	1C4RJFCG5EC	68222877AA	68222877AA	12.43.0	#2: 00.00.00 ,#1: 13.15.00 ,#0: 13.11.00
PCM	Powertrain Control Module	1C4RJFCG5EC	1C4RJFCG5EC	68172003AG	68172003AG	1247	04.03.01
PDM	Passenger Door Module	1C4RJFCG5EC	1C4RJFCG5EC	68155772AD	68155772AD	11.30.00	#0: 12.48.01

Login Off-line

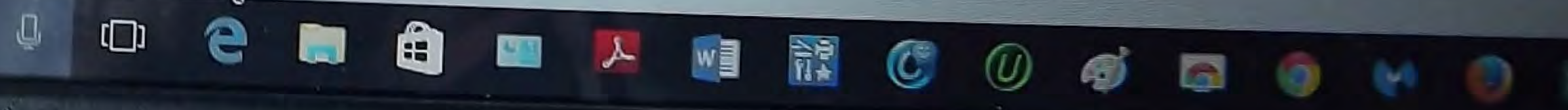
ask me anything



Include Environmental Data Summary Information

ECU	Name	Original VIN	Current VIN	Part Number	Flash Part Number	H/W Version	S/W Version
ABS	Anti Lock Brakes	1C4RJFCG5EC	1C4RJFCG5EC	04779976AL	04779976AL	13.23.00	#0: 13.19.03
AFLS	Adaptive Front Lighting System	Unknown origin	Invalid VIN	68111000JJ	68111000JJ	0C.40.0A	#0: 13.03.04
AMP	Amplifier	1C4RJFCG5EC	1C4RJFCG5EC	05091383AI	05091383AI	0A.17.01	#0: 13.13.00
ASCM	Air Suspension Control Module	1C4RJFCG5EC	1C4RJFCG5EC	68109987AD	68109987AD	09.1.00	#2: 13.02.00 ,#1: 13.02.00 ,#0: 13.02.00
BCM	Body Controller	1C4RJFCG5EC	1C4RJFCG5EC	68236158AA	68236158AA	10.20.0	#0: 14.18.48
DDM	Driver Door Module	1C4RJFCG5EC	1C4RJFCG5EC	68155773AD	68155773AD	11.30.00	#0: 12.48.01
DTCM	Drive Train Control Module	1C4RJFCG5EC	1C4RJFCG5EC	05150732AD	05150732AD	09.17.00	#0: 13.12.00
EDM	External Disc Module	1C4RJFCG5EC	1C4RJFCG5EC	05091245AC	05091245AC	0C.3.00	#0: 12.50.00
EPS	Electric Power Steering	1C4RJFCG5EC	1C4RJFCG5EC	05154663AB	05154663AB	12.44.00	#1: 12.42.00 ,#0: 12.42.00
ESM	Electronic Shifter	1C4RJFCG5EC	1C4RJFCG5EC	68166105AE	68166105AE	11.23.00	#1: 13.08.00 ,#0: 13.08.00
HSM	Heated Seat Module	1C4RJFCG5EC	1C4RJFCG5EC	68058083AJ	68058083AJ	0B.21.00	#0: 0D.10.00
HVAC	Heat, Ventilation and A/C	1C4RJFCG5EC	1C4RJFCG5EC	68110610AI	68110610AI	2012.19.01	#2: 2013.25.01 ,#1: 2013.25.01 ,#0: 13.04.19
ICS	Integrated Center Stack	1C4RJFCG5EC	1C4RJFCG5EC	05091840AE	05091840AE	0C.48.09	#0: 13.04.19
IPC	Instrument Panel Cluster	Unknown origin	1C4RJFCG5EC	05091678BG	05091678BG	12.18.00	#9: 85.19.16 ,#8: 255.Invalid Value.25
MSM	Memory Seat Module	1C4RJFCG5EC	1C4RJFCG5EC	05026617AC	05026617AC	0C.5.00	#0: 12.05.00
ORC	Occupant Restraint	1C4RJFCG5EC	1C4RJFCG5EC	68222877AA	68222877AA	12.43.0	#2: 00.00.00 ,#1: 13.15.00 ,#0: 13.11.00
PCM	Powertrain Control Module	1C4RJFCG5EC	1C4RJFCG5EC	68172003AG	68172003AG	1247	04.03.01
PDM	Passenger Door Module	1C4RJFCG5EC	1C4RJFCG5EC	68155772AD	68155772AD	11.30.00	#0: 12.48.01

Login **Offline**



HSM	Heated Seat Module	1C4RJFCG5E	1C4RJFCG5E	68038083AG	68038083AG	00.21.00	#0: 00.00.00
HVAC	Heat, Ventilation and A/C	1C4RJFCG5E	1C4RJFCG5E	68110610AI	68110610AI	2012.19.01	#2: 2013.25.01 ,#1: 2013.25.01
ICS	Integrated Center Stack	1C4RJFCG5E	1C4RJFCG5E	05091840AE	05091840AE	0C.48.09	#0: 13.04.19
IPC	Instrument Panel Cluster	Unknown orig	1C4RJFCG5E	05091678BG	05091678BG	12.18.00	#9: 85.19.16 ,#8: 255.Invalid
MSM	Memory Seat Module	1C4RJFCG5E	1C4RJFCG5E	05026617AC	05026617AC	0C.5.00	#0: 12.05.00
ORC	Occupant Restraint	1C4RJFCG5E	1C4RJFCG5E	68222877AA	68222877AA	12.43.0	#2: 00.00.00 ,#1: 13.15.00
PCM	Powertrain Control Module	1C4RJFCG5E	1C4RJFCG5E	68172003AG	68172003AG	1247	04.03.01
PDM	Passenger Door Module	1C4RJFCG5E	1C4RJFCG5E	68155772AD	68155772AD	11.30.00	#0: 12.48.01
PLGM	Power Liftgate	1C4RJFCG5E	1C4RJFCG5E	68140669AD	68140669AD	09.31.00	#0: 13.14.00
PTS	Parktronics	1C4RJFCG5E	1C4RJFCG5E	68204477AC	68204477AC	08.51.01	#0: 13.05.00
RADIO	Radio	1C4RJFCG5E	Invalid VIN	68190240AG	68190240AG	2012.45.01	#0: 2015.26.01
RFH	Radio Frequency Hub	1C4RJFCG5E	Invalid VIN	68143495AE	68143495AE	0C.32.00	#0: 0D.06.00
SCCM	Steering Column Control Module	1C4RJFCG5E	1C4RJFCG5E	68170720AB	68170720AB	0C.22.00	#0: 12.31.00
TCM	Transmission Control Module	1C4RJFCG5E	1C4RJFCG5E	68225560AF	68225560AF	10.3.1F	#1: 14.47.00 ,#0: 14.47.00
TPM	Tire Pressure Monitor	1C4RJFCG5E	1C4RJFCG5E	56029542AD	56029542AD	8.45.0	#0: 11.51.00

Login

Off-line

do me anything



EPS	Electric Power Steering	1C4RJFCG5EC	1C4RJFCG5EC	05091245AC	05091245AC	0C.3.00	#0: 12.50.00
ESM	Electronic Shifter	1C4RJFCG5EC	1C4RJFCG5EC	68166105AE	68166105AE	11.23.00	#1: 13.08.00 ,#0: 13.08.00
HSM	Heated Seat Module	1C4RJFCG5EC	1C4RJFCG5EC	68058083AJ	68058083AJ	0B.21.00	#0: 0D.10.00
HVAC	Heat, Ventilation and A/C	1C4RJFCG5EC	1C4RJFCG5EC	68110610AI	68110610AI	2012.19.01	#2: 2013.25.01 ,#1: 2013.25.01 ,#0: 21.00.00
ICS	Integrated Center Stack	1C4RJFCG5EC	1C4RJFCG5EC	05091840AE	05091840AE	0C.48.09	#0: 13.04.19
IPC	Instrument Panel Cluster	Unknown origin	1C4RJFCG5EC	05091678BG	05091678BG	12.18.00	#9: 85.19.16 ,#8: 255.Invalid Value.255
MSM	Memory Seat Module	1C4RJFCG5EC	1C4RJFCG5EC	05026617AC	05026617AC	0C.5.00	#0: 12.05.00
ORC	Occupant Restraint	1C4RJFCG5EC	1C4RJFCG5EC	68222877AA	68222877AA	12.43.0	#2: 00.00.00 ,#1: 13.15.00 ,#0: 13.11.00
PCM	Powertrain Control Module	1C4RJFCG5EC	1C4RJFCG5EC	68172003AG	68172003AG	1247	04.03.01
PDM	Passenger Door Module	1C4RJFCG5EC	1C4RJFCG5EC	68155772AD	68155772AD	11.30.00	#0: 12.48.01
PLGM	Power Liftgate	1C4RJFCG5EC	1C4RJFCG5EC	68140669AD	68140669AD	09.31.00	#0: 13.14.00
PTS	Parktronics	1C4RJFCG5EC	1C4RJFCG5EC	68204477AC	68204477AC	08.51.01	#0: 13.05.00
RADIO	Radio	1C4RJFCG5EC	Invalid VIN	68190240AG	68190240AG	2012.45.01	#0: 2015.26.01
RFH	Radio Frequency Hub	1C4RJFCG5EC	Invalid VIN	68143495AE	68143495AE	0C.32.00	#0: 0D.06.00
SCCM	Steering Column Control Module	1C4RJFCG5EC	1C4RJFCG5EC	68170720AB	68170720AB	0C.22.00	#0: 12.31.00
TCM	Transmission Control Module	1C4RJFCG5EC	1C4RJFCG5EC	68225560AF	68225560AF	10.3.1F	#1: 14.47.00 ,#0: 14.47.00
TPM	Tire Pressure Monitor	1C4RJFCG5EC	1C4RJFCG5EC	56029542AD	56029542AD	8.45.0	#0: 11.51.00

Login Off-line

Ask me anything

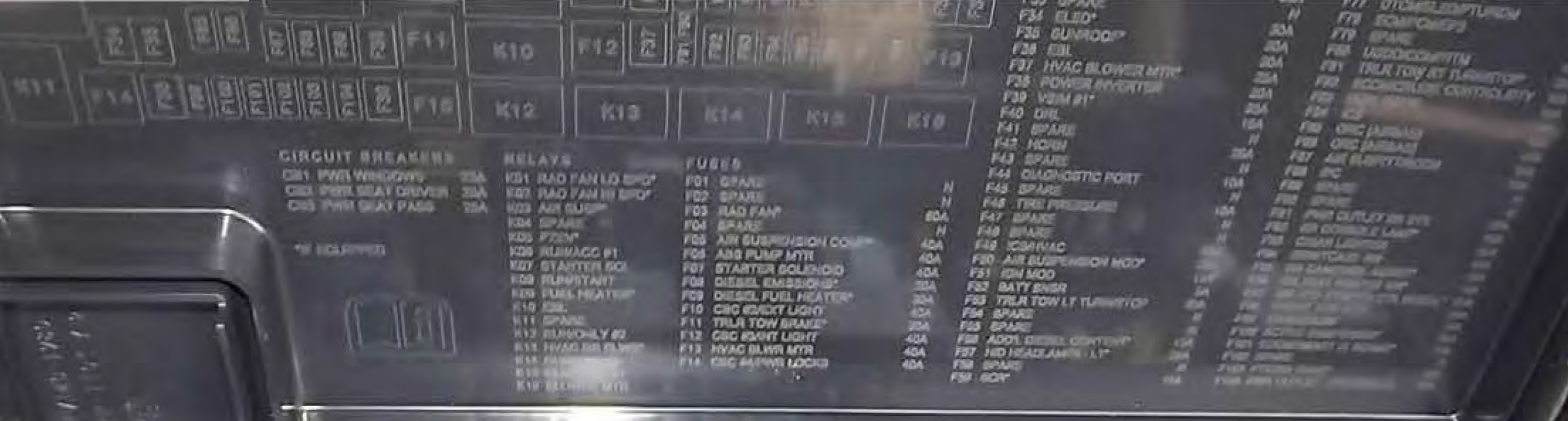






003AG  
08172  
SEQUENCE # 189550







DOT AVON 040113 9.0 mm VL

RECHERCHER LE SENS DE LA FLÈCHE  
AVANT DE DÉMARRER LE MOTEUR  
AVANT DE DÉMARRER LE MOTEUR  
AVANT DE DÉMARRER LE MOTEUR





**Chrysler Group LLC**

**VEHICLE EMISSION CONTROL INFORMATION**

GROUP: ECRXT03.65PA

EVAP: ECRXR0180RKA

CONFORMS TO REGULATIONS: 2014 MY FFV

NO ADJUSTMENTS NEEDED

ENGINE: 3.6L

TWC / HO2S / SFI

U.S. EPA: T2 B4 LDT OBD: CA OBD II FUEL: GASOLINE / ETHANOL

CERTIFIED TO OPTIONAL USEFUL LIFE PER EPA 86.1805-04(b).



47480 030AA

CALIFORNIA: OBD: CA OBD II FUEL: GASOLINE / ETHANOL

CERTIFIED TO OPTIONAL USEFUL LIFE PER CARB 1961 (a) (6).

CERTIFIED FOR SALE ULEV II QUALIFIED.































SERVICE

SERVICE



2949 KG 6500 LB

265/50R20 TIRES

250 KPA ( 36 PSI) COLD

265/50R20 TIRES

250 KPA ( 36 PSI) COLD



THIS VEHICLE CONFORMS TO ALL APPLICABLE U.S.A. FEDERAL MOTOR VEHICLE SAFETY STANDARDS IN EFFECT ON THE DATE OF MANUFACTURE SHOWN ABOVE.

VIN: 1C4RJFCG5EC [REDACTED] TYPE: MPV MDH: 070922 030AA  
VEHICLE MADE IN U.S.A. PAINT: PW7 TRIM: GLX9

**BRAKE +**



**Press Brake  
and  
Push Button  
to Start**

**41854 mi**

P  
R  
N  
D  
S





