

PE15-030

FLAT CHRYSLER

11-24-2015

ENCLOSURE 4

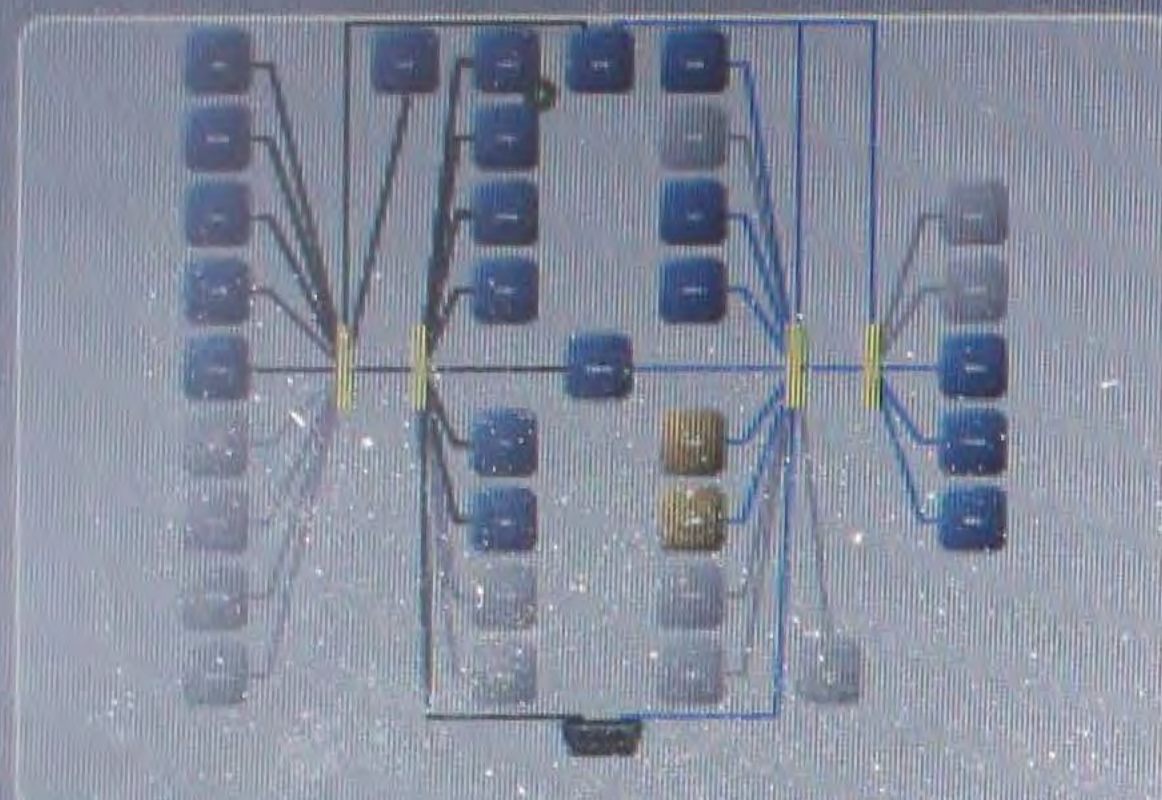
CAIR Backup





ORC View

Click on tabs to access various ECU operations and information for the selected ECU.



- Flash
- Data
- DTCs**
- Actuators
- System Tests
- Misc Functions
- ECU Details

Double-click row selection to view environmental data. Click on column heading to sort table.

All | Active | Stored | Pending

View Freeze Frame

View Event Data

Clear Stored DTCs

	ECU	Code	Status	Description
There are no DTCs present				

Overview

Name:

Occupant Restraint

Flash Part Number:

56054067AC

Bus Type:

CAN C

Hardware Version:

0C.2B.00

Software Version:

#0: 12.44.00, #1: 12.44.00, #2: 00.00.00

Original VIN

1C4RJFBG2E0

Current VIN

1C4RJFBG2E0

Variant & Version:

40 - 06

Country Code

N/A

DTC Count:

0

Disconnect

Warnings: 1 Errors: 1

(15) New knowledge base articles

Login **Off-line**

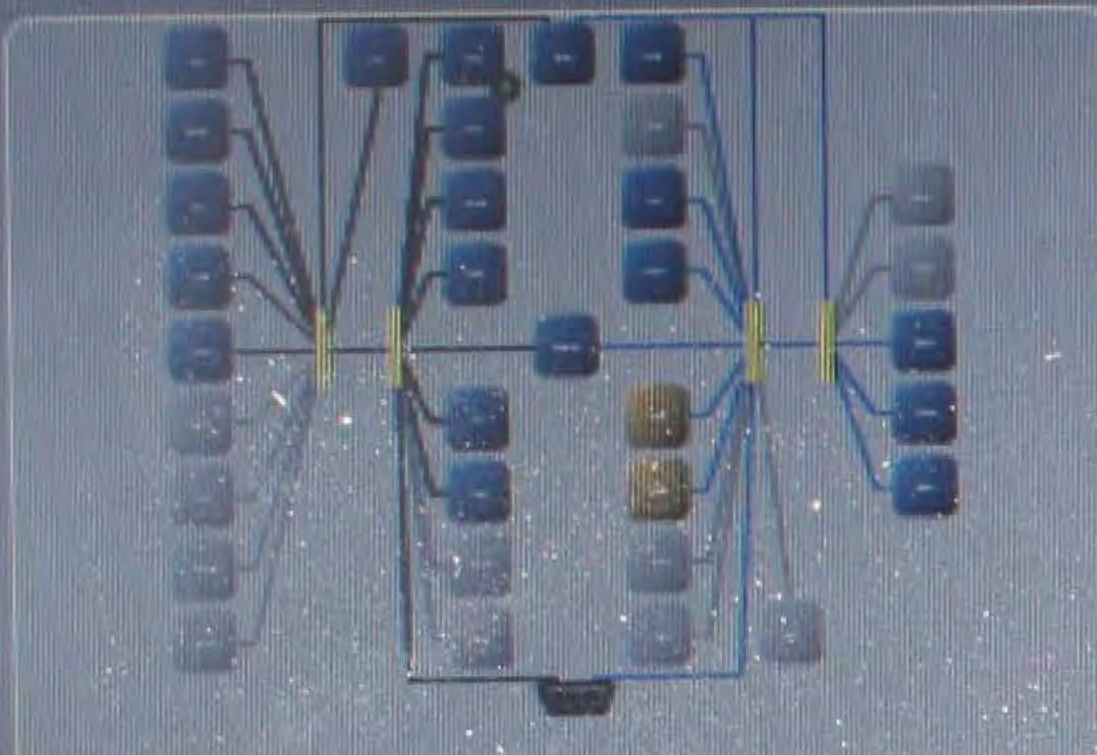
13.03.38

12:25 PM



BCM View

Click on tabs to access various ECU operations and information for the selected ECU.



- Flash
- Data
- DTCs**
- Actuators
- System Tests
- ECU Details

Double-click row selection to view environmental data. Click on column heading to sort table.

All | Active | Stored | Pending

View Freeze Frame

View Event Data

Clear Stored DTCs

	ECU	Code	Status	Description
There are no DTCs present				

Overview

Name:
Body Controller

Flash Part Number:
68210531AC

Bus Type:
CAN C

Hardware Version:
0A.14.00

Software Version:
#0: 12.50.52

Original VIN
1C4RJFBG2E [REDACTED]

Current VIN
1C4RJFBG2E [REDACTED]

Variant & Version:
40 - 10

Country Code
N/A

DTC Count:
0

Disconnect

Warnings: 1 Errors: 1

(15) New Knowledge base articles

Login **Off-line**

13.03.38

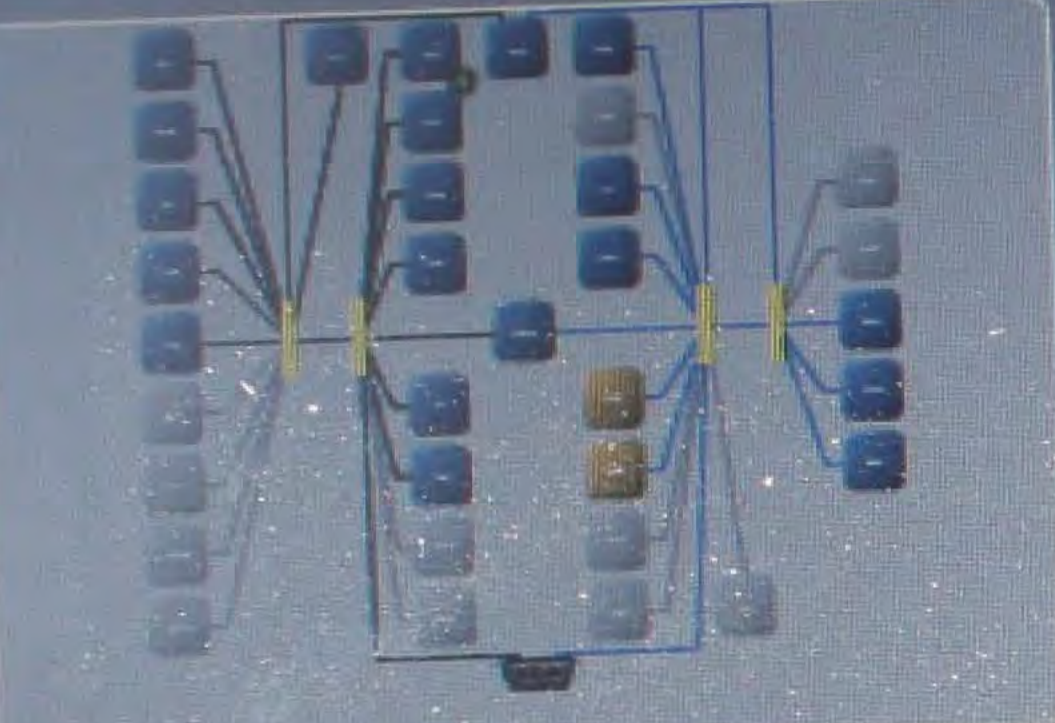
12:25 PM





HSM View

Click on tabs to access various ECU operations and information for the selected ECU.



- Flash
- Data
- DTCs**
- Actuators
- System Tests
- ECU Details

Double-click row selection to view environmental data. Click on column heading to sort table.

All | Active | Stored | Pending

- View Freeze Frame
- View Event Data
- Clear Stored DTCs

	ECU	Code	Status	Description
There are no DTCs present				
A	A			

Overview

Name:
Heated Seat Module

Flash Part Number:
68058082AI

Bus Type:
CAN IHS

Hardware Version:
0B.15.00

Software Version:
#0: 12.50.00

Original VIN
1C4RJFBG2E [REDACTED]

Current VIN
1C4RJFBG2E [REDACTED]

Variant & Version:
40 - 02

Country Code
N/A

DTC Count:
0

Disconnect

Warnings: 1 Errors: 11

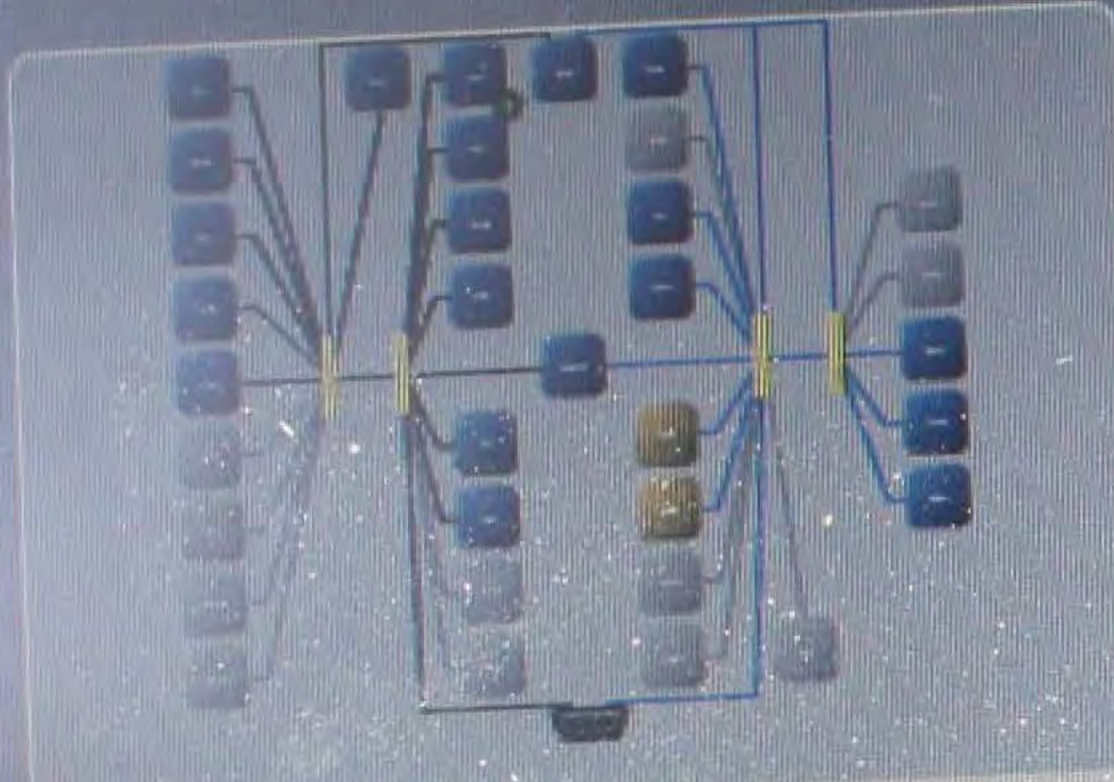


ICS View

Click on tabs to access various ECU operations and information for the selected ECU.



- Flash
- Data
- DTCs**
- Actuators
- System Tests
- Misc Functions
- ECU Details



Overview

Name:
Integrated Center Stack

Flash Part Number:
05091839AE

Bus Type:
CAN IHS

Hardware Version:
0C.30.09

Software Version:
#0: 13.04.19

Original VIN
1C4RJFBG2E [REDACTED]

Current VIN
1C4RJFBG2E [REDACTED]

Variant & Version:
42 - 02

Country Code
N/A

DTC Count:
0

Double-click row selection to view environmental data. Click on column heading to sort table.

All | Active | Stored | Pending

- View Free Frame
- View Event Data
- Clear Stored DTCs

	ECU	Code	Status	Description
There are no DTCs present				

A A

Disconnect

Warnings: 1 Errors: 1



HVAC View

Click on tabs to access various ECU operations and information for the selected ECU.



- Flash
- Data
- DTCs**
- Actuators
- System Tests
- Misc Functions
- ECU Details



Overview

Name:
Heat, Ventilation and A/C

Flash Part Number:
68110610AG

Bus Type:
CAN IHS

Hardware Version:
0C.13.01

Software Version:
#0: 13.16.05, #1: 13.16.05, #2: 13.16.05

Original VIN
1C4RJFBG2E0

Current VIN
1C4RJFBG2E0

Variant & Version:
43 - 00

Country Code
N/A

DTC Count:
0

Double-click row selection to view environmental data. Click on column heading to sort table.

All | Active | Stored | Pending

View Freeze Frame

View Event Data

Clear Stored DTCs

ECU	Code	Status	Description
There are no DTCs present			

A A

Disconnect

Warnings: 1 Errors: 11

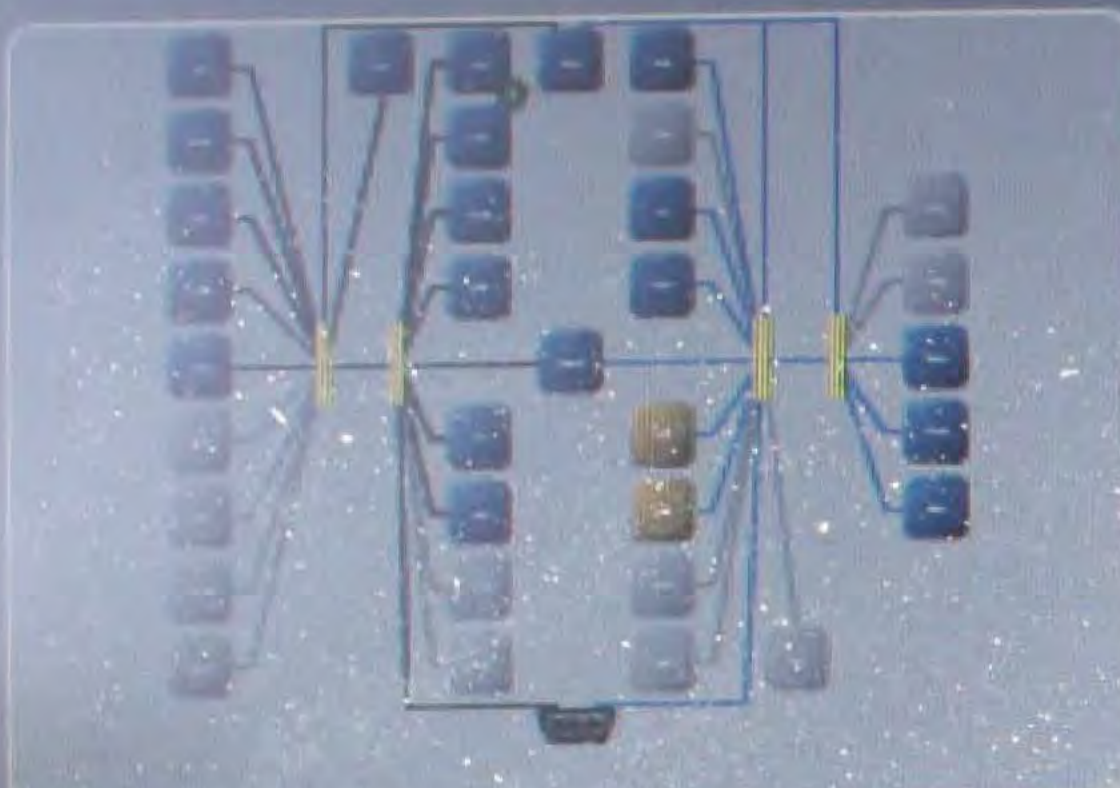


PDM View

Click on tabs to access various ECU operations and information for the selected ECU.



- Flash
- Data
- DTCs**
- Actuators
- System Tests
- Misc Functions
- ECU Details



Overview

Name:
Passenger Door Module

Flash Part Number:
68155770AD

Bus Type:
CAN IHS

Hardware Version:
11.30.00

Software Version:
#0: 18.72.01

Original VIN
1C4RJFBG2E [REDACTED]

Current VIN
1C4RJFBG2E [REDACTED]

Variant & Version:
41 - 00

Country Code
N/A

DTC Count:
2

Double-click row selection to view environmental data. Click on column heading to sort table.

All | Active | Stored | Pending

View Freeze Frame

View Event Data

Clear Stored DTCs

	ECU	Code	Status	Description
	PDM	B25AF-2A	Stored	Door Lock/Unlock Switch-Stuck
	PDM	B2860-15	Active	Door Ambient Light Control-Circuit Short to Battery or Open

A A





PDM View

Click on tabs to access various ECU operations and information for the selected ECU.



- Flash
- Data
- DTCs**
- Actuators
- System Tests
- Misc Functions
- ECU Details

Double-click row selection to view environmental data. Click on column heading to sort table.

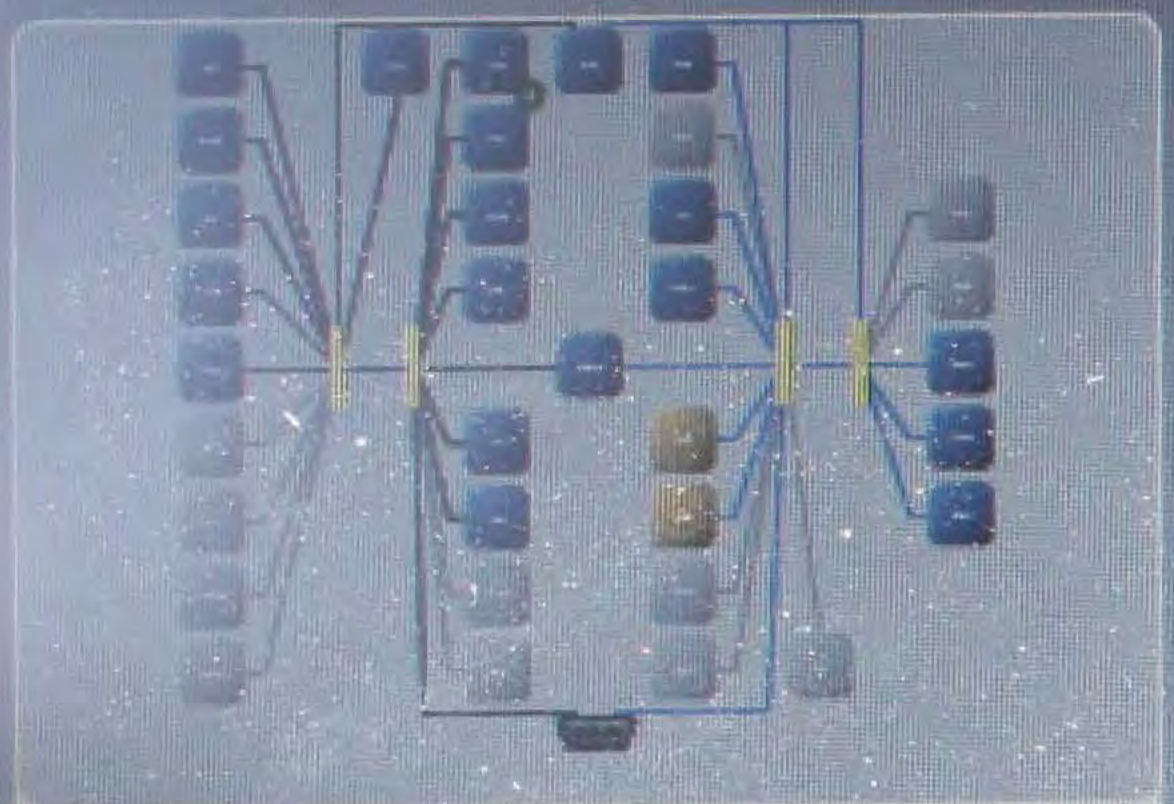
All | Active | Stored | Pending

View Freeze Frame

View Event Data

Clear Stored DTCs

	ECU	Code	Status	Description
	PDM	B25AF-2A	Stored	Door Lock/Unlock Switch-Stuck
	PDM	B2860-15	Active	Door Ambient Light Control-Circuit Short to Battery or Open



Overview

Name:
Passenger Door Module

Flash Part Number:
68155770AD

Bus Type:
CAN IHS

Hardware Version:
11.30.00

Software Version:
#0: 18.72.01

Original VIN
1C4RJFBG2EC [REDACTED]

Current VIN
1C4RJFBG2EC [REDACTED]

Variant & Version:
41 - 00

Country Code
N/A

DTC Count:
2

A A

Disconnect

Warnings: 1 Errors: 1

Double-click row selection to view environmental data. Click on column heading to sort table.

All | Active | Stored | Pending

	ECU	Code	Status	Description
	PDM	B25AF-2A	Stored	Door Lock/Unlock Switch-Stuck
	PDM	B2860-15	Active	Door Ambient Light Control-Circuit Short to Battery or Open

Overview

Name:
 Passenger Door Module
Flash Part Number:
 68155770AD
Bus Type:
 CAN IHS
Hardware Version:
 11.30.00
Software Version:
 #0: 18.72.01
Original VIN
 1C4RJFBG2E[REDACTED]
Current VIN
 1C4RJFBG2E[REDACTED]
Variant & Version:
 41 - 00
Country Code
 N/A
DTC Count:

Click on the buttons to view the desired information. Click on column heading to sort table.

Environmental Data for PDM | B25AF-2A Door Lock/Unlock Switch-Stuck

Name	Value	Units
Test Failed	False	
Test Failed This Operation Cycle	False	
Pending DTC	False	
Confirmed DTC	True	
Test Not Completed Since Last Clear	False	

Warnings: 1 Errors: 1

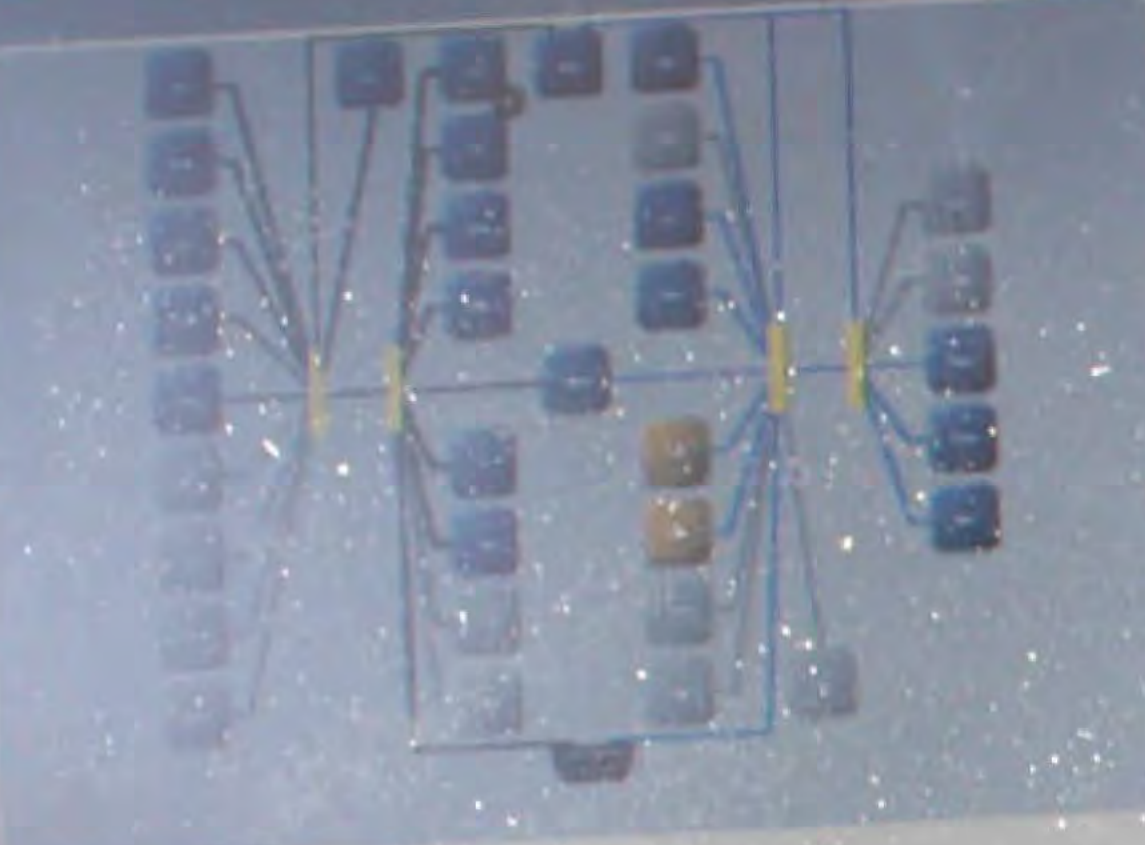




PDM View

Click on tabs to access various ECU operations and information for the selected ECU.

- Flash
- Data
- DTCs**
- Actuators
- System Tests
- Misc Functions
- ECU Details



Overview

Name:
Passenger Door Module

Flash Part Number:
68155770AD

Bus Type:
CAN IHS

Hardware Version:
11.30.00

Software Version:
#0: 18.72.01

Original VIN
1C4RJFBG2E [REDACTED]

Current VIN
1C4RJFBG2E [REDACTED]

Variant & Version:
41 - 00

Country Code
N/A

DTC Count:
2

Double-click row selection to view environmental data. Click on column heading to sort table.

All | Active | Stored | Pending

	ECU	Code	Description
	PDM	B25AF-2A	Door Lock/Unlock Switch-Stuck
	PDM	B2860-15	Door Ambient Light Control-Circuit Short to Battery or Open

Click on the buttons to view the desired information. Click on column heading to sort table.

- Environmental Data**
- Snapshot Data

Environmental Data for PDM | B25AF-2A Door Lock/Unlock Switch-Stuck

Name	Value	Units
Pending DTC	False	
Confirmed DTC	True	
Test Not Completed Since Last Clear	False	
Test Failed Since Last Clear	True	
Test Not Completed This Operation Cycle	False	

Disconnect

Warnings: 1 Errors: 1



PDM View

Click on tabs to access various ECU operations and information for the selected ECU.

- Flash
- Data
- DTCs**
- Actuators
- System Tests
- Misc Functions
- ECU Details



Overview

Name:
Passenger Door Module

Flash Part Number:
68155770AD

Bus Type:
CAN IHS

Hardware Version:
11.30.00

Software Version:
#0: 18.72.01

Original VIN
1C4RJFBG2E [REDACTED]

Current VIN
1C4RJFBG2E [REDACTED]

Variant & Version:
41 - 00

Country Code
N/A

DTC Count:
2

Double-click row selection to view environmental data. Click on column heading to sort table.

All | Active | Stored | Pending

- View Freeze Frame
- View Event Data
- Clear Stored DTCs

	ECU	Code	Description
	PDM	B25AF-2A	Door Lock/Unlock Switch-Stuck
	PDM	B2860-15	Door Ambient Light Control-Circuit Short to Battery or Open

Click on the buttons to view the desired information. Click on column heading to sort table.

- Environmental Data
- Snapshot Data

Environmental Data for PDM | B25AF-2A Door Lock/Unlock Switch-Stuck

Name	Value	Units
Test Failed Since Last Clear	True	
Test Not Completed This Operation Cycle	False	
Warning Indicator Requested	False	
DTC Extended Data Record Number - All	01	
Occurrence flag	Error	

Disconnect

Warnings: 1 Errors: 1

15 New Knowledge base articles

Log in Off-line

13.03.38

12:27 PM





DDM View

Click on tabs to access various ECU operations and information for the selected ECU.



- Flash
- Data
- DTCs**
- Actuators
- System Tests
- Misc Functions
- ECU Details



Overview

Name:
Driver Door Module

Flash Part Number:
68155771AD

Bus Type:
CAN IHS

Hardware Version:
11.30.00

Software Version:
#0: 18.72.01

Original VIN
1C4RJFBG2EC [REDACTED]

Current VIN
1C4RJFBG2EC [REDACTED]

Variant & Version:
41 - 00

Country Code
N/A

DTC Count:
1

Double-click row selection to view environmental data. Click on column heading to sort table.

All | Active | **Stored** | Pending

- View Freeze Frame
- View Event Data
- Clear Stored DTCs

	ECU	Code	Status	Description
	DDM	B1D4A-2A	Stored	Memory Switch input-Stuck

A A

Click on the buttons to view the desired information. Click on column heading to sort table.

- Environmental Data**
- Snapshot Data

Environmental Data for DDM | B1D4A-2A Memory Switch Input-Stuck

Name	Value	Units
Test Failed	False	
Test Failed This Operation Cycle	False	
Pending DTC	False	
Confirmed DTC	True	
Test Not Completed Since Last Clear	False	

A A

Disconnect

Warnings: 1 Errors: 1

(15) New Knowledge base articles

Login **Off-line**

13.03.38



12:29 PM



MFD BY **CHRYSLER GROUP LLC**

DATE OF MFR(BUILT): 5-13

GWR: 2949 KG 6500 LB

GAWR FRONT: 1452 KG 3200 LB WITH
18X8.0 RIMS AT

P265/60R18 TIRES
230 KPA (33 PSI) COLD

GAWR REAR: 1679 KG 3700 LB WITH
18X8.0 RIMS AT

P265/60R18 TIRES
230 KPA (33 PSI) COLD



THIS VEHICLE CONFORMS TO ALL APPLICABLE U.S.A. FEDERAL MOTOR VEHICLE SAFETY
STANDARDS IN EFFECT ON THE DATE OF MANUFACTURE SHOWN ABOVE.

VIN: 1C4RJFBG2E [REDACTED]
VEHICLE MADE IN U.S.A.

TYPE: [REDACTED]
PRINT: PSC

MPV
TRIM: ULX9

KDH: 050415 030AA

BRAKE +



**Press Brake
and
Push Button
to Start**

3233 mi



Jeep

P
R
N
D
S





Jeep



ssion Service
Worn Fluid • Extends Life



GRAND CHEROKEE

MICHELIN





GRAND CHEROKEE



BG Transmission Service
Cleans • Removes Worn Fluid • Extends Life

Service
Tire Inspection



Jeep

LIMITED

4x4



Travis Miller
Service Advisor

Jeep

LIMITED





The vehicle has several safety features:
- SEATBELT
- AIR BAG
- AUDIO DISPLAY
- NAVIGATION DISPLAY
- H.I.D. HEADLAMPS

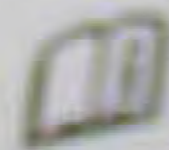


TC084

⚠ WARNING

EVEN WITH ADVANCED AIRBAGS

- CHILDREN CAN BE KILLED OR SERIOUSLY INJURED BY THE AIRBAG.
- THE BACK SEAT IS THE SAFEST PLACE FOR CHILDREN.
- NEVER PUT A REAR-FACING CHILD SEAT IN THE FRONT.
- ALWAYS USE SEATBELTS AND CHILD RESTRAINTS.
- SEE OWNER'S MANUAL FOR MORE INFORMATION ABOUT AIRBAGS.



05108 114AA

⚠ MISE EN GARDE

MÊME AVEC DES AIRBAGS AVANCÉS

- LES ENFANTS PEUVENT ÊTRE TUÉS OU GRAVEMENT BLESSÉS PAR L'AIRBAG.
- LE SIÈGE À L'ARRIÈRE EST LE LIEU LE PLUS SÛR POUR LES ENFANTS.
- NE JAMAIS METTRE UN SIÈGE À L'ARRIÈRE À L'AVANT D'UNE VOITURE.
- TOUJOURS PORTER SA CEINTURE DE SÛRETÉ ET UTILISER UN SIÈGE ENFANT APPROPRIÉ.
- VOIR LE MANUEL D'UTILISATION POUR PLUS D'INFORMATIONS SUR LES AIRBAGS.











Click on tabs to access various ECU operations and information for the selected ECU.

- Flash
- Data
- DTCs**
- Actuators
- System Tests
- Misc Functions
- ECU Details

Double-click row selection to view environmental data. Click on column heading to sort table.

All | Active | Stored | Pending

View Freeze Frame

View Event Data

Clear Stored DTCs

	ECU	Code	Description
	PDM	B25AF-2A	Door Lock/Unlock Switch-Stuck
	PDM	B2880-4	Door Ambient Light Control-Circuit Short to Battery or Open

A A

Click on the buttons to view the desired information. Click on column heading to sort table.

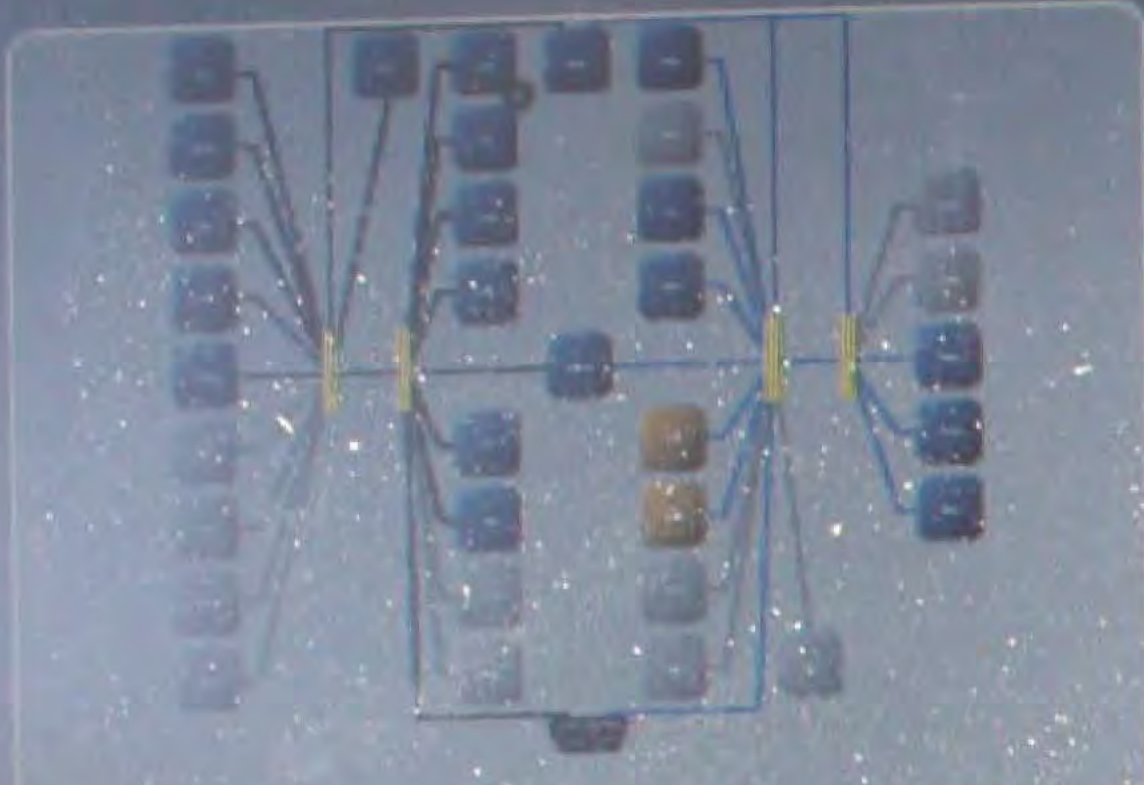
Environmental Data

Snapshot Data

Environmental Data for PDM | B25AF-2A Door Lock/Unlock Switch-Stuck

Name	Value	Units
DTC Extended Data Record Number - All	01	
Occurrence flag	Error	
Original Odometer Value	2267	miles
Most Recent Odometer Value	2267	miles
Frequency Counter	1	

A A



Overview

Name:
Passenger Door Module

Flash Part Number:
68155770AD

Bus Type:
CAN IHS

Hardware Version:
11.30.00

Software Version:
#0: 18.72.01

Original VIN
1C4RJFBG2EC [REDACTED]

Current VIN
1C4RJFBG2EC [REDACTED]

Variant & Version:
41 - 00

Country Code
N/A

DTC Count:
2

Disconnect

Warnings: 1 Errors: 11

(15) New knowledge base articles

Login Off-line

13.03.38

12:27 PM





PDM View

Click on tabs to access various ECU operations and information for the selected ECU.



- Flash
- Data
- DTCs**
- Actuators
- System Tests
- Misc Functions
- ECU Details



Overview

Name:
Passenger Door Module

Flash Part Number:
68155770AD

Bus Type:
CAN IHS

Hardware Version:
11.30.00

Software Version:
#0: 18.72.01

Original VIN
1C4RJFBG2E [REDACTED]

Current VIN
1C4RJFBG2E [REDACTED]

Variant & Version:
41 - 00

Country Code
N/A

DTC Count:
2

Double-click row selection to view environmental data. Click on column heading to sort table.

All | Active | Stored | Pending

- View Freeze Frame
- View Event Data
- Clear Stored DTCs

	ECU	Code	Status	Description
	PDM	B25AF-2A	Stored	Door Lock/Unlock Switch-Stuck
	PDM	B2860-15	Active	Door Ambient Light Control-Circuit Short to Battery or Open

Click on the buttons to view the desired information. Click on column heading to sort table.

- Environmental Data
- Snapshot Data

Environmental Data for PDM | B25AF-2A Door Lock/Unlock Switch-Stuck

Name	Value	Units
Occurrence Flag	ERROR	
Original Odometer Value	2267	miles
Most Recent Odometer Value	2267	miles
Frequency Counter	1	
Operation Cycle Counter	50	

Disconnect

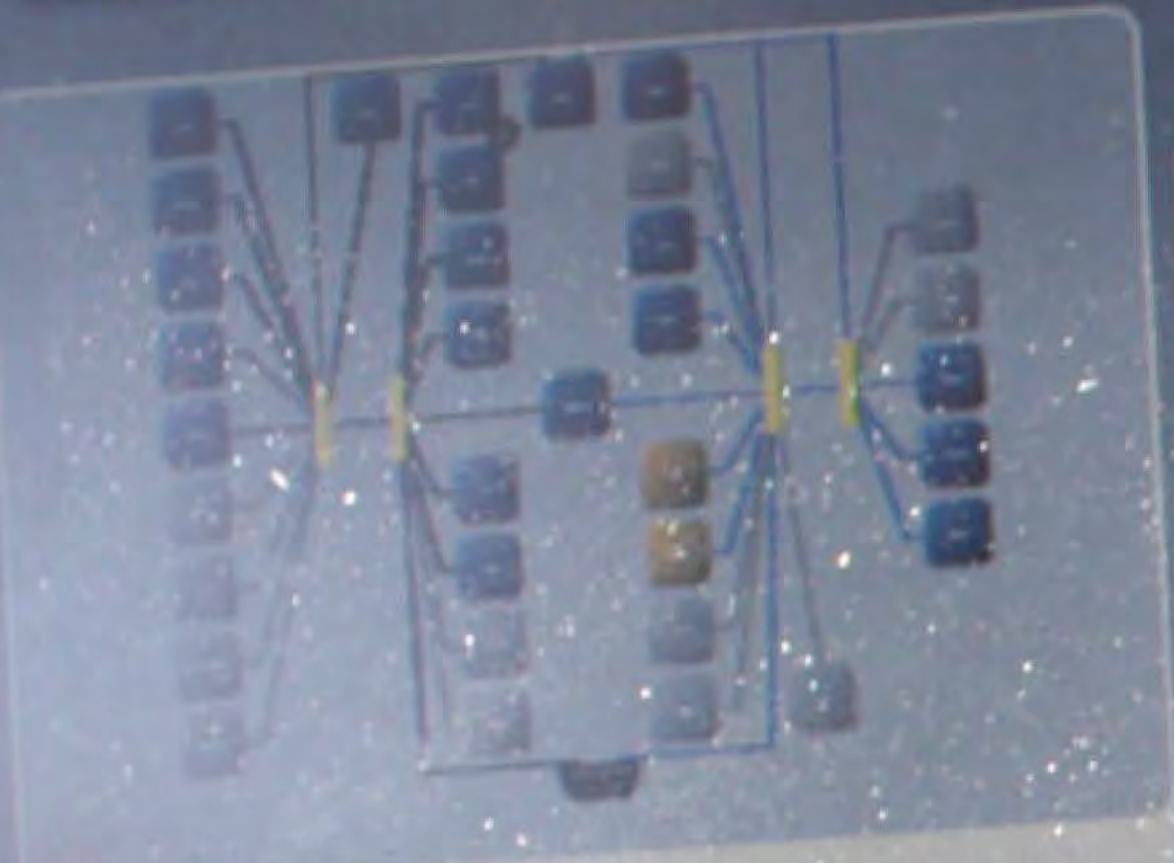
Warnings: 1 Errors: 11



PDM View

Click on tabs to access various ECU operations and information for the selected ECU.

- Flash
- Data
- DTCs**
- Actuators
- System Tests
- Misc Functions
- ECU Details



Overview

Name:
Passenger Door Module

Flash Part Number:
68155770AD

Bus Type:
CAN IHS

Hardware Version:
11.30.00

Software Version:
#0: 18.72.01

Original VIN
1C4RJFBG2E [REDACTED]

Current VIN
1C4RJFBG2E [REDACTED]

Variant & Version:
41 - 00

Country Code
N/A

DTC Count:
2

Double-click row selection to view environmental data. Click on column heading to sort table.

- View Freeze Frame
- View Event Data
- Clear Stored DTCs

All | Active | Stored | Pending

	ECU	Code	Status	Description
	PDM	B25AF-2A	Stored	Door Lock/Unlock Switch-Stuck
	PDM	B2860-15	Active	Door Ambient Light Control-Circuit Short to Battery or Open

Click on the buttons to view the desired information. Click on column heading to sort table.

- Environmental Data
- Snapshot Data

Environmental Data for PDM | B2860-15 Door Ambient Light Control-Circuit Short to Battery or Open

Name	Value	Units
Test Failed	True	
Test Failed This Operation Cycle	False	
Pending DTC	False	
Confirmed DTC	True	
Test Not Completed Since Last Clear	False	

Disconnect

Warnings: 1 Errors: 1

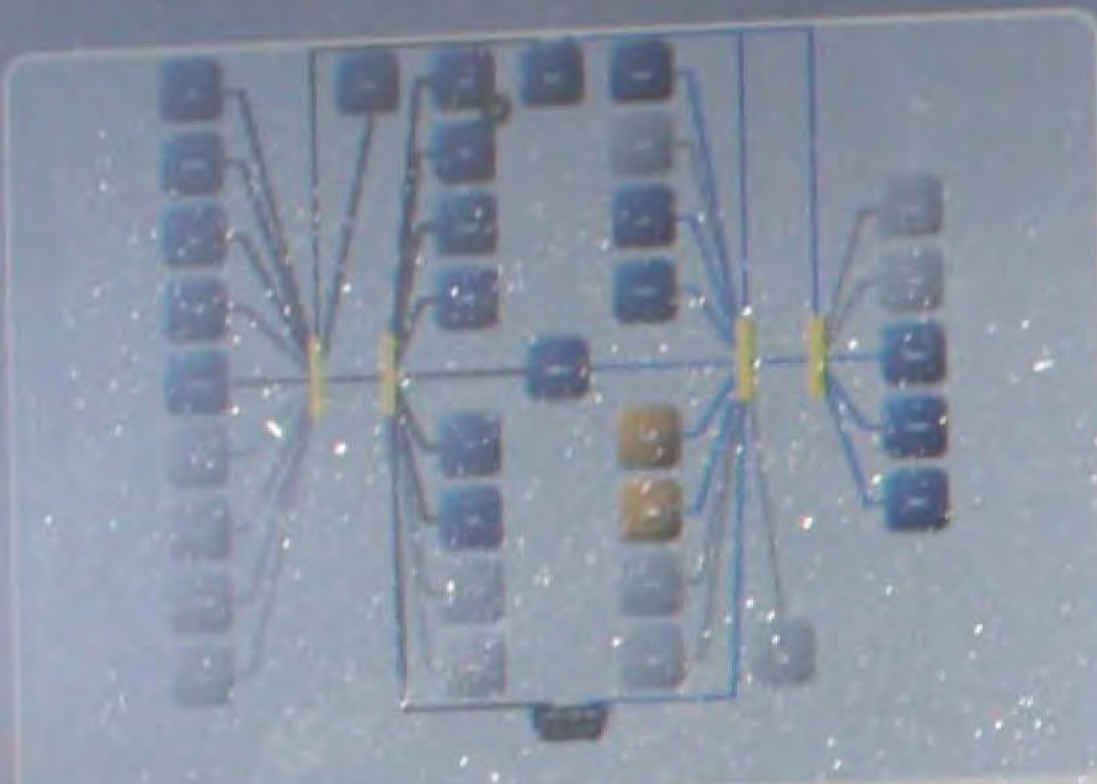


PDM View

Click on tabs to access various ECU operations and information for the selected ECU.



- Flash
- Data
- DTCs**
- Actuators
- System Tests
- Misc Functions
- ECU Details



Overview

Name:
Passenger Door Module

Flash Part Number:
68155770AD

Bus Type:
CAN IHS

Hardware Version:
11.30.00

Software Version:
#0: 18.72.01

Original VIN
1C4RJFBG2[REDACTED]

Current VIN
1C4RJFBG2[REDACTED]

Variant & Version:
41 - 00

Country Code
N/A

DTC Count:
2

Double-click row selection to view environmental data. Click on column heading to sort table.

- View Freeze Frame
- View Event Data
- Clear Stored DTCs

All	Active	Stored	Passive	ECU	Code	Description
				PDM	B25A2	Door Lock/Unlock Switch-Stuck
				PDM	B2860-15	Door Ambient Light Control-Circuit Short to Battery or Open

Click on the buttons to view the desired information. Click on column heading to sort table.

- Environmental Data
- Snapshot Data

Environmental Data for PDM | B2860-15 Door Ambient Light Control-Circuit Short to Battery or Open

Name	Value	Units
Test Not Completed Since Last Clear	False	
Test Failed Since Last Clear	True	
Test Not Completed This Operation Cycle	False	
Warning Indicator Requested	False	
DTC Extended Data Record Number - All	01	

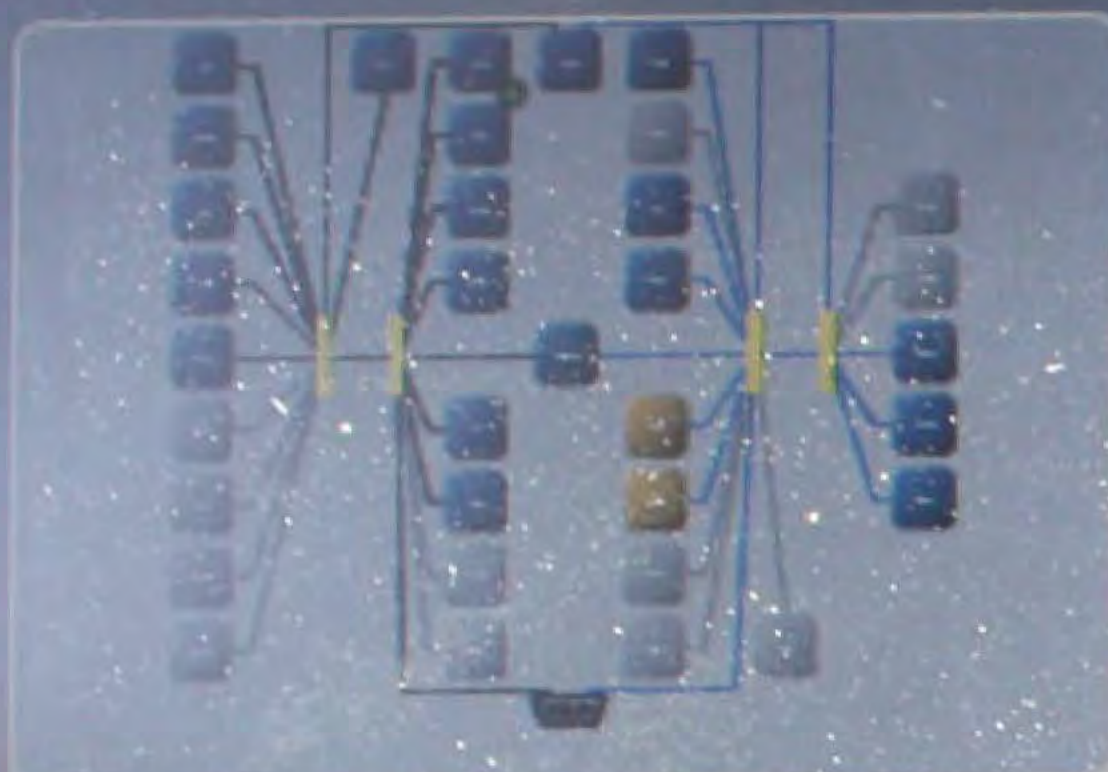
Disconnect

Warnings: 1 Errors: 1



PDM View

Click on tabs to access various ECU operations and information for the selected ECU.



Overview

Name:
Passenger Door Module
Flash Part Number:
68155770AD
Bus Type:
CAN IHS
Hardware Version:
11.30.00
Software Version:
#0: 18.72.01
Original VIN
1C4RJFBG2EC [REDACTED]
Current VIN
1C4RJFBG2EC [REDACTED]
Variant & Version:
41 - 00
Country Code
N/A
DTC Count:
2

- Flash
- Data
- DTCs**
- Actuators
- System Tests
- Misc Functions
- ECU Details

Double-click row selection to view environmental data. Click on column heading to sort table.

All | Active | Stored | Pending

View Freeze Frame

View Event Data

Clear Stored DTCs

	ECU	Code	Status	Description
	PDM	B25AF-2A	Stored	Door Lock/Unlock Switch-Stuck
	PDM	B2860-15	Active	Door Ambient Light Control-Circuit Short to Battery or Open

A A

Click on the buttons to view the desired information. Click on column heading to sort table.

Environmental Data

Snapshot Data

Environmental Data for PDM | B2860-15 Door Ambient Light Control-Circuit Short to Battery or Open

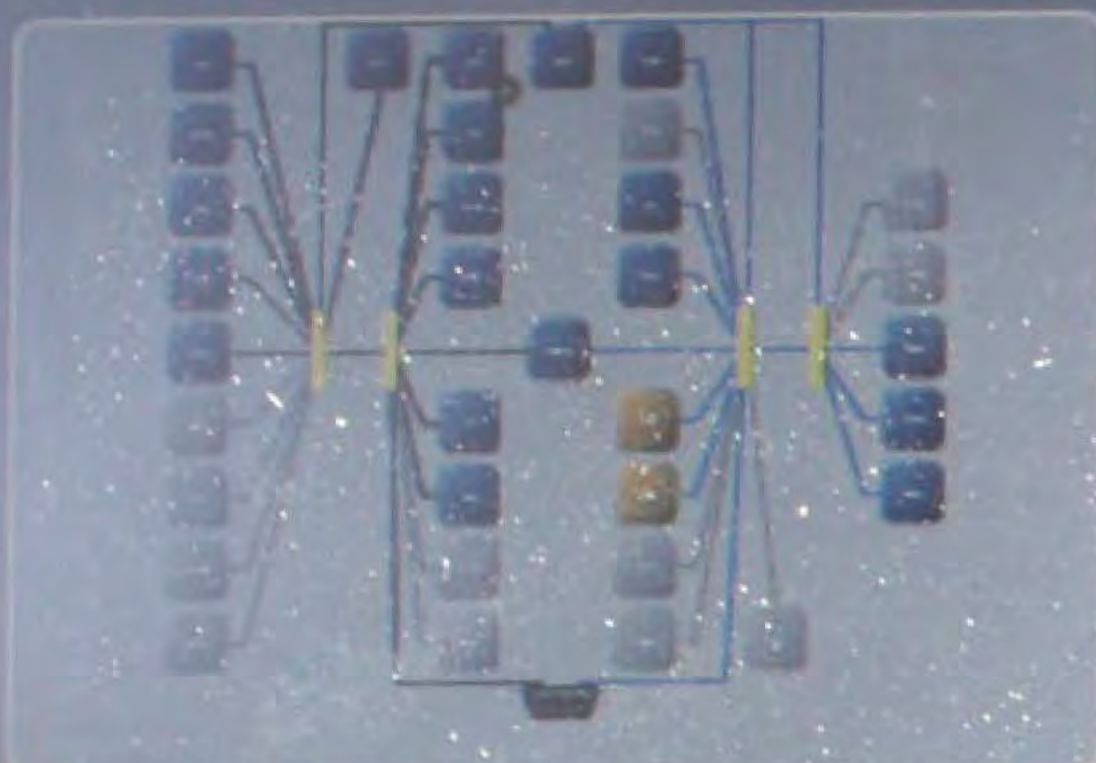
Name	Value	Units
DTC Extended Data Record Number - All	01	
Occurrence flag	Error	
Original Odometer Value	507	miles
Most Recent Odometer Value	507	miles
Frequency Counter	1	

A A



PDM View

Click on tabs to access various ECU operations and information for the selected ECU.



Overview

Name:
Passenger Door Module

Flash Part Number:
68155770AD

Bus Type:
CAN IHS

Hardware Version:
11.30.00

Software Version:
#0: 18.72.01

Original VIN
1C4RJFBG2E [REDACTED]

Current VIN
1C4RJFBG2E [REDACTED]

Variant & Version:
41 - 00

Country Code
N/A

DTC Count:
2

- Flash
- Data
- DTCs**
- Actuators
- System Tests
- Misc Functions
- ECU Details

Double-click row selection to view environmental data. Click on column heading to sort table.

All | Active | Stored | | |

	ECU	Code	Description
	PDM	B25AF...	Door Lock/Unlock Switch-Stuck
	PDM	B2860-15	Door Ambient Light Control-Circuit Short to Battery or Open

A A

Click on the buttons to view the desired information. Click on column heading to sort table.

|

Environmental Data for PDM | B2860-15 Door Ambient Light Control-Circuit Short to Battery or Open

Name	Value	Units
Occurrence Flag	ERROR	
Original Odometer Value	507	miles
Most Recent Odometer Value	507	miles
Frequency Counter	1	
Operation Cycle Counter	0	

A A



DDM View

Click on tabs to access various ECU operations and information for the selected ECU.



Overview

Name:
Driver Door Module

Flash Part Number:
68155771AD

Bus Type:
CAN IHS

Hardware Version:
11.30.00

Software Version:
#0: 18.72.01

Original VIN
1C4RJFBG2E0 [REDACTED]

Current VIN
1C4RJFBG2E0 [REDACTED]

Variant & Version:
41 - 00

Country Code
N/A

DTC Count:
1

- Flash
- Data
- DTCs**
- Actuators
- System Tests
- Misc Functions
- ECU Details

Double-click row selection to view environmental data. Click on column heading to sort table.

All | Active | Stored | Pending

- View Freeze Frame
- View Event Data
- Clear Stored DTCs

	ECU	Code	Status	Description
	DDM	B1D4A-2A	Stored	Memory Switch Input-Stuck

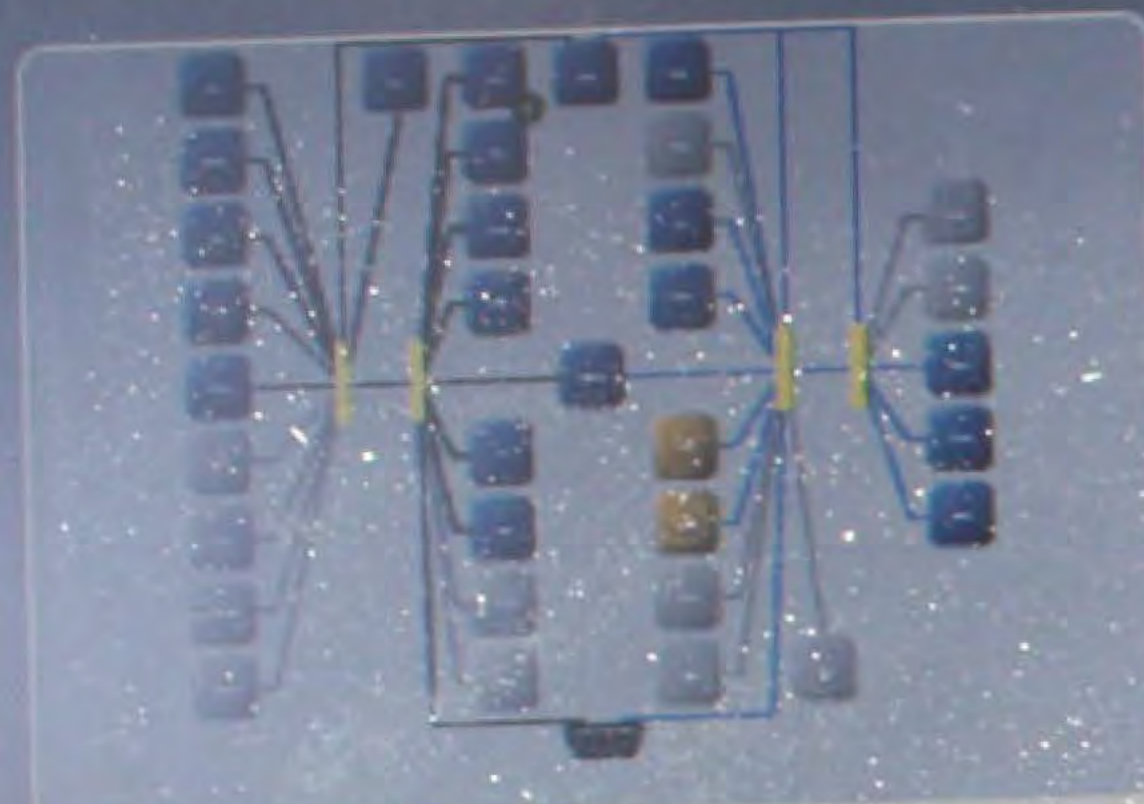
A A





DDM View

Click on tabs to access various ECU operations and information for the selected ECU.



Overview

Name:
Driver Door Module

Flash Part Number:
68155771AD

Bus Type:
CAN IHS

Hardware Version:
11.30.00

Software Version:
#0: 18.72.01

Original VIN
1C4RJFBG2E [REDACTED]

Current VIN
1C4RJFBG2E [REDACTED]

Variant & Version:
41 - 00

Country Code
N/A

DTC Count:
1

- Flash
- Data
- DTCs**
- Actuators
- System Tests
- Misc Functions
- ECU Details

Double-click row selection to view environmental data. Click on column heading to sort table.

All | Active | Stored | Pending

	ECU	Code	Status	Description
	DDM	B1D4A-2A	Stored	Memory Switch Input-Stuck

A A

Click on the buttons to view the desired information. Click on column heading to sort table.

Environmental Data for DDM | B1D4A-2A Memory Switch Input-Stuck

Name	Value	Units
Occurrence Flag	ERROR	
Original Odometer Value	3231	miles
Most Recent Odometer Value	3231	miles
Frequency Counter	1	
Operation Cycle Counter	2	

A A

Warnings: 1 Errors: 1

(15) New knowledge base articles

Login **Off-line**

13.03.38



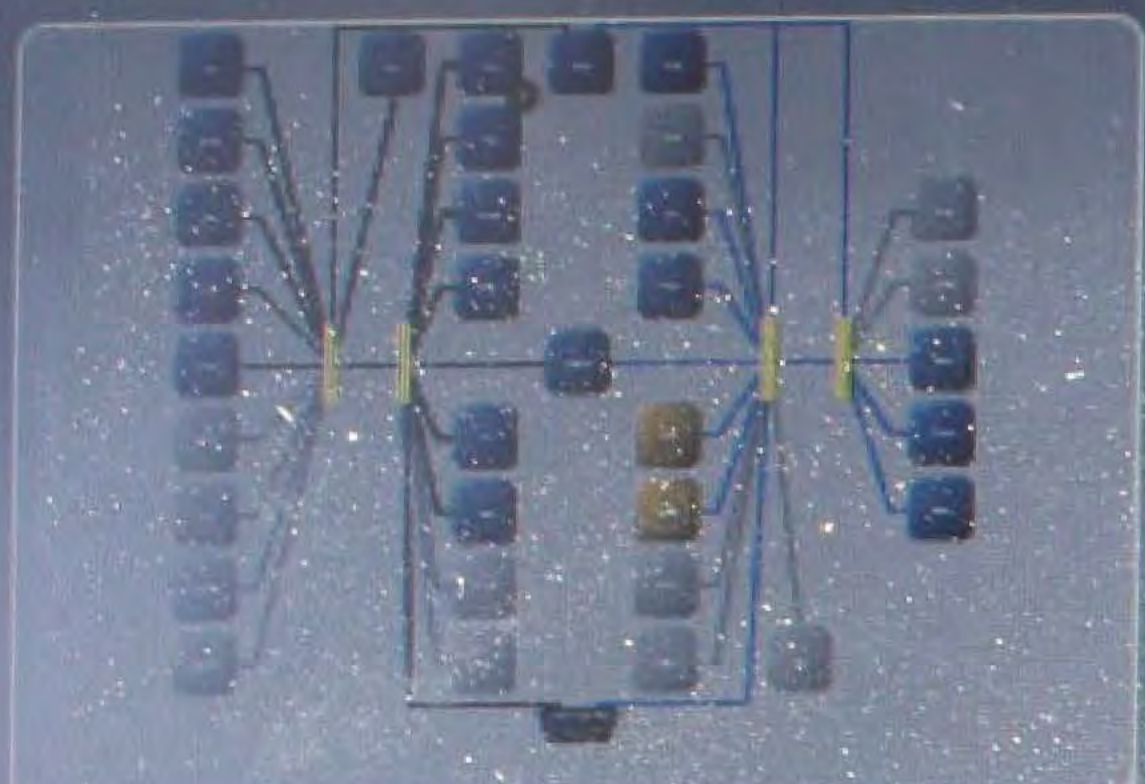
12:29 PM





DDM View

Click on tabs to access various ECU operations and information for the selected ECU.



- Flash
- Data
- DTCs**
- Actuators
- System Tests
- Misc Functions
- ECU Details

Double-click row selection to view environmental data. Click on column heading to sort table.

All | Active | Stored | Pending

View Freeze Frame

View Event Data

Clear Stored DTCs

	ECU	Code	Status	Description
	DDM	B1D4A-2A	Stored	Memory Switch Input-Stuck
A	A			

Click on the buttons to view the desired information. Click on column heading to sort table.

Environmental Data

Snapshot Data

Environmental Data for DDM | B1D4A-2A Memory Switch Input-Stuck

Name	Value	Units
Test Not Completed This Operation Cycle	False	
Warning Indicator Requested	False	
DTC Extended Data Record Number - All	01	
Occurrence flag	Error	
Original Odometer Value	2224	miles
A	A	

Overview

Name:
Driver Door Module

Flash Part Number:
68155771AD

Bus Type:
CAN IHS

Hardware Version:
11.30.00

Software Version:
#0: 18.72.01

Original VIN
1C4RJFBG2E [REDACTED]

Current VIN
1C4RJFBG2E [REDACTED]

Variant & Version:
41 - 00

Country Code
N/A

DTC Count:
1

(15) New knowledge base articles

Login **Off-line**

Disconnect

Warnings: 1 Errors: 11

13.03.38



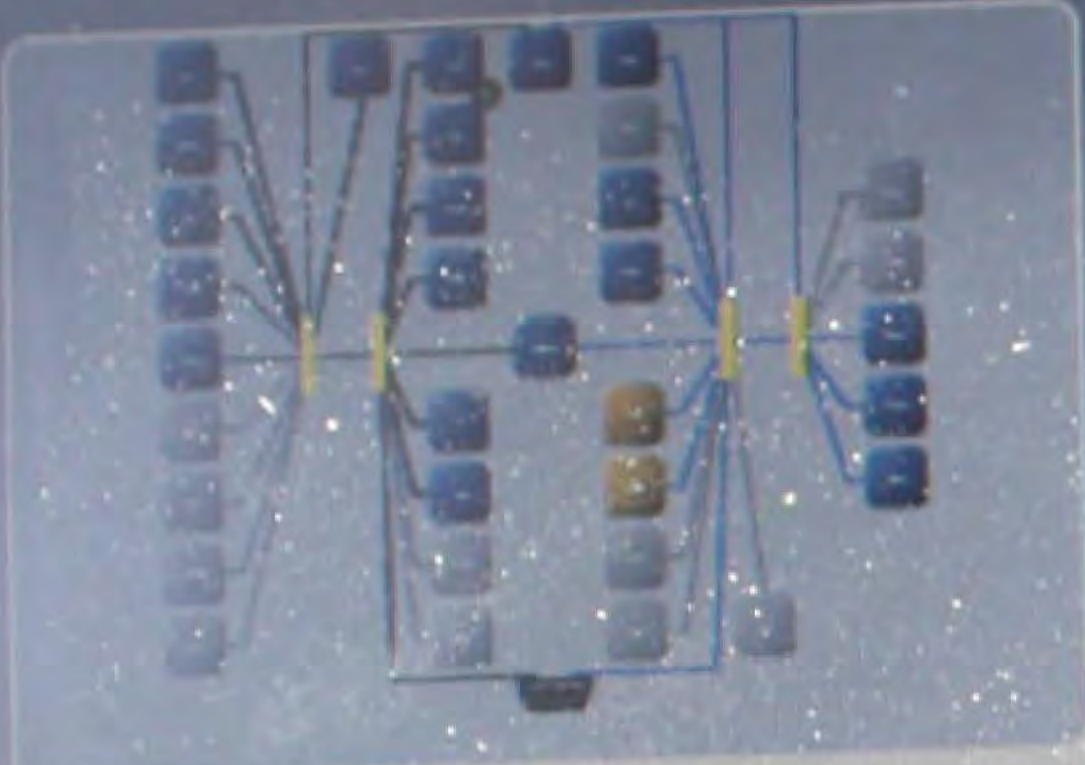
12:28 PM





DDM View

Click on tabs to access various ECU operations and information for the selected ECU.



Overview

Name:
Driver Door Module

Flash Part Number:
68155771AD

Bus Type:
CAN IHS

Hardware Version:
11.30.00

Software Version:
#0: 18.72.01

Original VIN
1C4RJFBG2E[REDACTED]

Current VIN
1C4RJFBG2E[REDACTED]

Variant & Version:
41 - 00

Country Code
N/A

DTC Count:
1

- Flash
- Data
- DTCs**
- Actuators
- System Tests
- Misc Functions
- ECU Details

Double-click row selection to view environmental data. Click on column heading to sort table.

All | Active | Stored | Pending

- View Freeze Frame
- View Event Data
- Clear Stored DTCs

	ECU	Code	Status	Description
	DDM	B1D4A-2A	Stored	Memory Switch Input-Stuck

A A

Click on the buttons to view the desired information. Click on column heading to sort table.

- Environmental Data
- Snapshot Data

Environmental Data for DDM | B1D4A-2A Memory Switch Input-Stuck

Name	Value	Units
Confirmed DTC	True	
Test Not Completed Since Last Clear	False	
Test Failed Since Last Clear	True	
Test Not Completed This Operation Cycle	False	
Warning Indicator Requested	False	

A A

Disconnect

Warnings: 1 Errors: 1

