

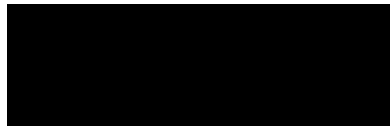
PE15-030

FLAT CHRYSLER

11-24-2015

ENCLOSURE 4

CAIR Backup









TC 084

DUCATI



WE APPRECIATE YOUR BUSINESS!



WE APPRECIATE YOUR BUSINESS!

AMERICAN EXPRESS



10/22/09

Location Profiles Wizard

Select Tool

Double-click row or select tool and press "Next". List refreshes automatically as tools are added or removed.

Hide Unresponsive Devices

Location	Yes	Edp	IP Address	Workgroup	Interface	Locked	Lock Owner
Baseline			10.172.206.172				
Perimeter							

Work in Standalone mode

Modify Location Profiles

Next >

Windows taskbar showing Start button, system tray with icons for network, volume, and power, and the time 2:43 PM.

ViewSonic





10:42:20
Camera Data Wizard

Select Tool
Double-click row or select tool and press "Next". List refreshes automatically as tools are added or removed.

Hide Unresponsive Devices

Device	Year	Body	IP Address	Workgroup	Interface	Locked	Lock Owner
Unresolved			10.252.246.172		Wi-Fi		
MAC-0000-00-00-00-00-00	2014	WN	10.252.246.164				

FRONT ASSEMBLY
REAR EXPANDER

Vehicle View

Service Information

Enter search phrase here

Legend:

- Active ECU
- Non-responsive ECU
- WTC Present
- SCN Not Built
- Streaming ECU
- Non-Flash Available
- ECU IC
- Control

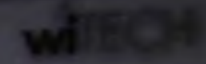
AWBTS: Diagnostic Procedures Customer Preferences Vehicle Preparations

View Freeze Frame View DTCs Clear Stored DTCs

Act	Stor	Pend	ECU	Code	Status	Description
			There are no DTCs present			

Warnings: 0 Errors: 0

2:45 PM



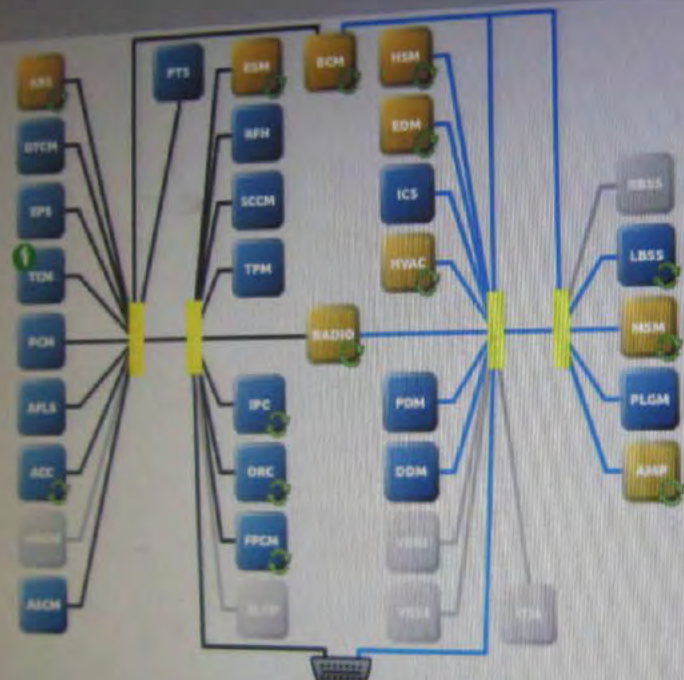
RRTs/Recalls

Click the "View Document" button that appears when you hover over your selection to open the desired document. Click on column heading to sort table.

Document Type	Number	Launch Date	Status	Description
RRT	14-250	2014-07-03	Complete	2014 WD WK BODY CONTROL MODULE ENHANCEMENT FLASH
RRT	13-071	2013-10-08	Complete	2013-2014 RA3 RA4 RADIO ENHANCEMENTS FLASH
RRT	13-086	2013-09-11	Complete	2014 WK 3.6L TRANS/TRANSFER CASE SHIFT ENHANCEMENT
Recall	RC-N58-13	2013-11-08	Complete	Third Revision Safety Recall N58 - Reprogram Instrument Cluster & ABS Module / Alt. Grd. Wire
Recall	RC-CN58-13	2013-11-08	Complete	SAFETY RECALL N58 - REPROGRAM INSTRUMENT CLUSTER AND ABS MODULE/ALTERNATOR GROUND
Recall	RC-IN58-13	2013-11-08	Complete	Third Revision Safety Recall N58 - Reprogram Instrument Cluster & ABS Module / Alt. Ground Wire
Recall	RC-P14-14	2014-05-16	Incomplete	Safety Recall P14 - Brake Booster
Recall	RC-CP14-14	2014-05-16	Incomplete	SAFETY RECALL P14 - BRAKE BOOSTER
Recall	RC-SP14-14	2014-05-16	Incomplete	Safety Recall P14 - Brake Booster
Recall	RC-P36-14	2014-06-19	Complete	Safety Recall P36 - Sun Visor
Recall	RC-CP36-14	2014-06-19	Complete	SAFETY RECALL P36 - SUN VISOR WIRING
Recall	RC-SP36-14	2014-06-19	Complete	Safety Recall P36 - Sun Visor Wiring

There are several documents that are pending release.

Click on an icon for complete details



Customer Preferences Vehicle Preparations

environmental data. Click on column heading to sort table.

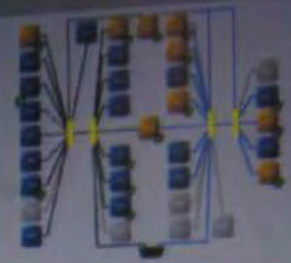
Code	Status	Description
C0857-28	stored	Steering Wheel Position
P0796-14		

Vehicle View

2014 WK3 AL
VIN: 1CARJFCC8EC [REDACTED]
Battery: 14.37 volts

Legend

- Active ECU
- Non-responsive ECU
- ECU Disabled



All DTCs | Diagnostic Procedures | Customer Preferences | **Vehicle Preparations**

Double-click row selection to view environmental data. Click on column heading to sort table.

View Freeze Frame | View Event Data | Clear Stores

All Active Stored Pending

ECU	Code	Status	Description
ABS	C0051-28	stored	Steering Wheel Position Sensor-Signal Bias Level Out of Range / Zero Adjustment Failure
ESM	PHC86-14	stored	PRNDL Display-Circuit Short to Ground or Open
HVAC	U0184-00	stored	Lost Communication With Radio-
HVAC	U1188-00	stored	Lost Communication with Integrated Center Stack (ICS)-
HSM	U0147-00	stored	Lost Communication With Telematics Gateway-
AMP	U0184-00	stored	Lost Communication With Radio-
BCM	U0147-00	stored	Lost Communication With Telematics Gateway-
HSM	U0147-00	stored	Lost Communication With Telematics Gateway-
RADIO	U1188-00	stored	Lost Communication with Integrated Center Stack (ICS)-
ECM	U0141-00	stored	Lost Communication With IPM (FCM/TIPM)-
ECM	U0184-00	stored	Lost Communication With Radio-

Disconnect | Warnings



NUMBER: 21-007-13 REV. C

GROUP: Transmission and Transfer Case

DATE: December 18, 2013

This bulletin is supplied as technical information only and is not an authorization for repair. No part of this publication may be reproduced, stored in a retrieval system, or transmitted, in any form or by any means, electronic, mechanical, photocopying, or otherwise, without written permission of Chrysler Group LLC.

THIS SERVICE BULLETIN IS ALSO BEING RELEASED AS RAPID RESPONSE TRANSMITTAL (RRT) 13-066. ALL APPLICABLE SOLD AND UN-SOLD RRT VIN'S HAVE BEEN LOADED. TO VERIFY THAT THIS RRT SERVICE ACTION IS APPLICABLE TO THE VEHICLE, USE VIP OR PERFORM A VIN SEARCH IN TECHCONNECT. ALL REPAIRS ARE REIMBURSABLE WITHIN THE PROVISIONS OF WARRANTY.

THIS BULLETIN SUPERSEDES SERVICE BULLETIN 21-007-13 REV. B, DATED OCTOBER 12, 2013, WHICH SHOULD BE REMOVED FROM YOUR FILES. ALL REVISIONS ARE HIGHLIGHTED WITH ****ASTERISKS**** AND INCLUDE ADDITIONAL SPECIFIC TRANSMISSION SHIFT QUALITY ENHANCEMENTS.

THE WITECH SOFTWARE LEVEL MUST BE AT RELEASE 14.01 OR HIGHER TO PERFORM THIS PROCEDURE.

SUBJECT:

Shift, Transmission and Transfer Case Shift Enhancements



NUMBER: 21-030-14

GROUP: Transmission and Transfer Case

DATE: September 26, 2014

This bulletin is supplied as technical information only and is not an authorization for repair. No part of this publication may be reproduced, stored in a retrieval system, or transmitted, in any form or by any means, electronic, mechanical, photocopying, or otherwise, without written permission of Chrysler Group LLC.

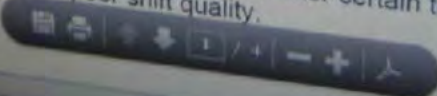
HELP USING THE wiTECH DIAGNOSTIC APPLICATION FOR FLASHING AN ECU IS AVAILABLE BY SELECTING "HELP" THEN "HELP CONTENTS" AT THE TOP OF THE wiTECH DIAGNOSTIC APPLICATION WINDOW.

THE wiTECH SOFTWARE VERSION MUST BE AT 15.01 OR HIGHER TO PERFORM THIS PROCEDURE.

SUBJECT:
845RE Transmission Quick Learn Procedure

OVERVIEW:
This bulletin provides information on how to perform the new scan tool based transmission Quick Learn procedure. This procedure is required after certain transmission repairs or to remedy a customer's concern of poor shift quality.

MODELS:



Microsoft

Windows 7
Taskbar icons and system clock showing 11:04 AM



ESM View

Click on selected sensor sensor ID to view data and information for the selected ECU.

- Task
- Data
- ECU
- Actuators
- System Tests
- Misc Functions
- ECU Details

Double-click row selection to graph data element, or check multiple elements and press "Show Graph". Click on column heading to sort table. Drag and drop row or multiple row selections to re-order table elements.

[Show Graph](#)

Graph	Name	Value	Unit	Type
<input type="checkbox"/>	Vehicle Battery Voltage	14.6	Volts	Sensors
<input type="checkbox"/>	Park LED	4.2941176471	Volts	Sensors
<input type="checkbox"/>	Reverse LED	0.0000000000	Volts	Sensors
<input type="checkbox"/>	Drive LED	0.0000000000	Volts	Sensors
<input type="checkbox"/>	Autostick LED	0.4509803922	Volts	Sensors
<input type="checkbox"/>	Position 0 (idle) / INT Position after start	Not Set		Sensors
<input type="checkbox"/>	Position 6 (hold Position) POS ZERO	Set		Sensors
<input type="checkbox"/>	POS ONE Forward 3	Not Set		Sensors
<input type="checkbox"/>	POS TWO Forward 2	Not Set		Sensors
<input type="checkbox"/>	POS THREE Forward 1	Not Set		Sensors
<input type="checkbox"/>	POS FOUR Backward 1	Not Set		Sensors
<input type="checkbox"/>	POS FIVE Backward 2	Not Set		Sensors
<input type="checkbox"/>	POS SIX Backward 3	Not Set		Sensors
<input type="checkbox"/>	Release Button one	Not Set		Sensors
<input type="checkbox"/>	Release Button 2	Not Set		Sensors
<input type="checkbox"/>	Neutral LED	Not Set		Sensors
<input type="checkbox"/>		0.0000000000	Volts	Sensors

- Chassis
- Name
- Part Number:
- Bus Type:
- Hardware Version:
- Software Version:
- Spare Part Number:
- ECU Code:
- Software Number:
- Hardware Number:
- Original VIN:
- Current VIN:
- Variant & Versions:
- Country Code:

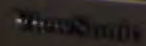
© 2007 Bosch

Disconnect

Warnings: 0 Errors: 0

Print

2:52 PM





Select Tool
 Double-click a row or select tool and press "Next". List refreshes automatically as tools are added or removed.

Hide Unavailable Devices

Device	Year	Body	IP Address	Workgroup	Interface	Locked	Lock Owner
MicroPod-2	2014	WR	10.252.246.164		Wi-Fi		Grant(0050BA8B2316)-WITECH
POD-2	2011	KA	10.252.246.160		Wi-Fi		

Work in standalone mode

Modify Location Profiles

Next

<input type="checkbox"/>	Cruise System Is Controlling Speed	False		Sensors
<input type="checkbox"/>	Brake Pedal State	False		Sensors
<input type="checkbox"/>	Brake Intervention by ESP Active	False		Sensors
<input type="checkbox"/>	Brake Intervention by assistance system active	False		Sensors
<input type="checkbox"/>	Master cylinder pressure	0	psi	Sensors
<input type="checkbox"/>	Wheel RPM Front Left	0.0	rpm	Sensors
<input type="checkbox"/>	Wheel RPM Front Right	0.0	rpm	Sensors
<input type="checkbox"/>	Wheel RPM Rear Left	0.0	rpm	Sensors
<input type="checkbox"/>	Wheel RPM Rear Right	0.0	rpm	Sensors
<input type="checkbox"/>	Transfer Case Status	Auto		Sensors
<input type="checkbox"/>	Oil Temperature	181	°F	Sensors
<input type="checkbox"/>	Current Gear	Current Gear "P"		Sensors
<input type="checkbox"/>	Trans A/C Converter Clutch Slipping	False		Sensors
<input type="checkbox"/>	PRND Status	Lever in position "P"		Sensors



Disconnect

Warnings: 0 Errors: 0

2:59 PM

ViewSonic

<input type="checkbox"/>	Brake Pedal State	Pedal Pressed		Sensors
<input type="checkbox"/>	Brake Intervention by ESP Active	False		Sensors
<input type="checkbox"/>	Brake Intervention by assistance system active	False		Sensors
<input type="checkbox"/>	Master cylinder pressure	859	psi	Sensors
<input type="checkbox"/>	Wheel RPM Front Left	0.0	rpm	Sensors
<input type="checkbox"/>	Wheel RPM Front Right	0.0	rpm	Sensors
<input type="checkbox"/>	Wheel RPM Rear Left	0.0	rpm	Sensors
<input type="checkbox"/>	Wheel RPM Rear Right	0.0	rpm	Sensors
<input type="checkbox"/>	Transfer Case Status	Auto		Sensors
<input type="checkbox"/>	Oil Temperature	183	*F	Sensors
<input type="checkbox"/>	Current Gear	Current Gear "R"		Sensors
<input type="checkbox"/>	Trans A/C Converter Clutch Slipping	False		Sensors
<input type="checkbox"/>	PRND Status	Lever in Position "R"		Sensors


Disconnect

Warnings: 0 Errors: 0

System tray icons including network, volume, and power, along with the time 3:00 PM.

ViewSonic



Allow TRANS Torque Request	27	rpm	Sensors
Cruise System Is Controlling Speed	True		Sensors
Brake Pedal State	False		Sensors
Brake Intervention by ESP Active	Pedal Pressed		Sensors
Brake intervention by assistance system active	False		Sensors
Master cylinder pressure	1166	psi	Sensors
Wheel RPM Front Left	0.0	rpm	Sensors
Wheel RPM Front Right	0.0	rpm	Sensors
Wheel RPM Rear Left	0.0	rpm	Sensor 
Wheel RPM Rear Right	0.0	rpm	Sensors
Transfer Case Status	Auto		Sensors
Oil Temperature	185	°F	Sensors
Current Gear	Current gear "N"		Sensors
Trans A/C Converter Clutch Slipping	False		Sensors
PRND Status	Lever in Position "N"		Sensors

Disconnect

Warnings: 3 Errors

3:00

ViewSonic

Brake intervention by ABS	1204	psi	Sensors
Master cylinder pressure	0.0	rpm	Sensors
Wheel RPM Front Left	0.0	rpm	Sensors
Wheel RPM Front Right	0.0	rpm	Sensors
Wheel RPM Rear Left	0.0	rpm	Sensors
Wheel RPM Rear Right	0.0	rpm	Sensors
Transfer Case Status	Auto		Sensors
Oil Temperature	189	°F	Sensors
Current Gear	Current Gear "1"		Sensors
Trans A/C Converter Clutch Slipping	False		Sensors
PRND Status	Lever in position "D"		Sensors

Disconnect

ViewSonic









3.6L
VVT





VACUUM BRAKE 04581665AB >CM,SY(PET)CM

Barcode label on the motor component

EDD



OWNER'S MANUAL IN THE TRUNK
STEEL

OK



WARNING
GAS FILLING
DO NOT EXCEED
1/2 INCH

DOT MR 1/12 1/8

25-U711-6262 4

D4779977AA

ARCC

MANUAL OR TIRE PLACARD



112

113

114

115

116



95VVA
13827

3 4 5 6 7
11 11 113 114 114 11





















XVD
SERIES



MFS 265/50R20

107T



15073







BRAKE +



Press Brake
and
Push Button
to Start

RPM
x1000



A vertical column of icons on the left side of the instrument cluster:

- Car icon (top)
- Upward arrow
- Fuel pump icon
- Downward arrow
- Trip icon
- Red steering wheel with exclamation mark icon

P

Hold OK to Reset

26138 mi

PM
000



68°F

7:48



26138 mi



7:48

68°F



Press Brake
and
Push Button
to Shift
into Gear

26138 mi

N



#0

000



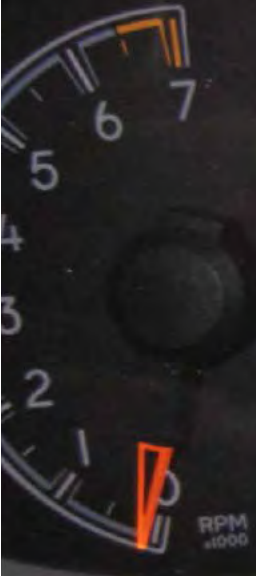
68°F

7:48



S
D





Press Brake
and
Push Button
to Start







2014 WK 3.6L | VIN: 1C4RJFCG8E0 [REDACTED]

New Part Number	Description
68225560AD	2014 WK 3.6L 4WD WDTCM NAFTA

Device Serial Number: WSP-06326

Page 1

Device Software Version: 1.6.5

Mon Oct 20 2014



2014 WK 3.6L | VIN: 1C4RJFCG8EC [REDACTED]

ECU	Code	Status	Description
EDM	U0184-00	stored	Lost Communication With Radio-

Device Serial Number: WSP-06326

Page 2

Device Software Version: 1.6.5

Mon Oct 20 2014

ECU	Code	Status	Description
ABS	C0051-28	stored	Steering Wheel Position Sensor-Signal Bias Level Out of Range / Zero Adjustment Failure
ESM	P1C86-14	stored	PRNDL Display-Circuit Short to Ground or Open
HVAC	U0184-00	stored	Lost Communication With Radio-
HVAC	U11B8-00	stored	Lost Communication with Integrated Center Stack (ICS)-
MSM	U0147-00	stored	Lost Communication With Telematics Gateway-
AMP	U0184-00	stored	Lost Communication With Radio-
BCM	U0147-00	stored	Lost Communication With Telematics Gateway-
HSM	U0147-00	stored	Lost Communication With Telematics Gateway-
RADIO	U11B8-00	stored	Lost Communication with Integrated Center Stack (ICS)-



2014 WK 3.6L | VIN: 1C4RJFCG8EC [REDACTED]

ECU	Code	Status	Description
-----	------	--------	-------------

Device Serial Number: WSP-06326

Page 1

Device Software Version: 1.6.5

Mon Oct 20 2014



2014 WK 3.6L | VIN: 1C4RJFCG8E0 [REDACTED]

Graph	Name	Value	Unit	Type
false	POSFIVE Backward 2	Not Set		Sensors
false	POSSIX Backward 3	Not Set		Sensors
false	Relase Button one	Not Set		Sensors
false	Release Button 2	Not Set		Sensors
false	Neutral LED	0.0000000000	Volts	Sensors

Device Serial Number: WSP-06326

Page 2

Device Software Version: 1.6.5

Mon Oct 20 2014



2014 WK 3.6L | VIN: 1C4RJFCG8EC [REDACTED]

Graph	Name	Value	Unit	Type
false	Vehicle Battery Voltage	14.4	Volts	Sensors
false	Park LED	4.3137254902	Volts	Sensors
false	Reverse LED	0.0000000000	Volts	Sensors
false	Drive LED	0.0000000000	Volts	Sensors
false	Autostick LED	0.4509803922	Volts	Sensors
false	Position 0 (Idle)/ INIT Position after start	Not Set		Sensors
false	Position 6 (Mid Position) POSZERO	Set		Sensors
false	POS ONE Foreward 3	Not Set		Sensors
false	POSTWO Foreward 2	Not Set		Sensors
false	POSTHREE Foreward 1	Not Set		Sensors
false	POSFOUR Backward 1	Not Set		Sensors

Device Serial Number: WSP-06326

Page 1

Device Software Version: 1.6.5

Mon Oct 20 2014

Graph	Name	Value	Unit	Type
false	Current Gear	Current Gear "P"		Sensors
false	Trans A/C Converter Clutch Slipping	False		Sensors
false	PRND Status	Lever in position		Sensors

Device Serial Number: WSP-06326

Page 7

Device Software Version: 1.6.5

Mon Oct 20 2014



2014 WK 3.6L | VIN: 1C4RJFCG8EC [REDACTED]

Graph	Name	Value	Unit	Type
false	Current Gear	Current Gear "R"		Sensors
false	Trans A/C Converter Clutch Slipping	False		Sensors
false	PRND Status	Lever in Position		Sensors

Device Serial Number: WSP-06326

Page 7

Device Software Version: 1.6.5

Mon Oct 20 2014



2014 WK 3.6L | VIN: 1C4RJFCG8E0 [REDACTED]

Graph	Name	Value	Unit	Type
false	Current Gear	Current gear "N"		Sensors
false	Trans A/C Converter Clutch Slipping	False		Sensors
false	PRND Status	Lever in Position		Sensors

Device Serial Number: WSP-06326

Page 7

Device Software Version: 1.6.5

Mon Oct 20 2014



2014 WK 3.6L | VIN: 1C4RJFCG8EC [REDACTED]

Graph	Name	Value	Unit	Type
false	Current Gear	Current Gear "1"		Sensors
false	Trans A/C Converter Clutch Slipping	False		Sensors
false	PRND Status	Lever in position		Sensors

Device Serial Number: WSP-06326

Page 7

Device Software Version: 1.6.5

Mon Oct 20 2014

Document Type	Number	Launch Date	Status	Description
Recall	RC-IN58-13	2013-11-08	Complete	Third Revision Safety Recall N58 - Reprogram Instrument Cluster & ABS Module / Alt. Ground Wire
Recall	RC-P14-14	2014-05-16	Incomplete	Safety Recall P14 - Brake Booster
Recall	RC-CP14-14	2014-05-16	Incomplete	SAFETY RECALL P14 - BRAKE BOOSTER
Recall	RC-IP14-14	2014-05-16	Incomplete	Safety Recall P14 - Brake Booster
Recall	RC-P36-14	2014-08-19	Complete	Safety Recall P36 - Sun Visor
Recall	RC-CP36-14	2014-08-19	Complete	SAFETY RECALL P36 - SUN VISOR WIRING
Recall	RC-IP36-14	2014-08-19	Complete	Safety Recall P36 - Sun Visor Wiring

Device Serial Number: WSP-06326

Page 2

Device Software Version: 1.6.5

Mon Oct 20 2014

Document Type	Number	Launch Date	Status	Description
RRT	14-050	2014-07-03	Complete	2014 WD WK BODY CONTROL MODULE ENHANCEMENT FLASH
RRT	13-071	2013-10-08	Complete	2013-2014 RA3 RA4 RADIO ENHANCEMENTS FLASH
RRT	13-066	2013-09-11	Complete	2014 WK 3.6L TRANS/TRANSFER CASE SHIFT ENHANCEMENT
Recall	RC-N58-13	2013-11-08	Complete	Third Revision Safety Recall N58 - Reprogram Instrument Cluster & ABS Module / Alt. Grd. Wire
Recall	RC-CN58-13	2013-11-08	Complete	SAFETY RECALL N58 - REPROGRAM INSTRUMENT CLUSTER AND ABS MODULE/ ALTERNATOR GROUND WIRE

Device Serial Number: WSP-06326

Page 1

Device Software Version: 1.6.5

Mon Oct 20 2014



2014 WK 3.6L | VIN: 1C4RJFCG8E0 [REDACTED]

New Part Number	Description
68225560AD	2014 WK 3.6L 4WD WDTCM NAFTA

Device Serial Number: WSP-06326

Page 1

Device Software Version: 1.6.5

Mon Oct 20 2014



2014 WK 3.6L | VIN: 1C4RJFCG8EC [REDACTED]

ECU	Code	Status	Description
EDM	U0184-00	stored	Lost Communication With Radio-

Device Serial Number: WSP-06326

Page 2

Device Software Version: 1.6.5

Mon Oct 20 2014

ECU	Code	Status	Description
ABS	C0051-28	stored	Steering Wheel Position Sensor-Signal Bias Level Out of Range / Zero Adjustment Failure
ESM	P1C86-14	stored	PRNDL Display-Circuit Short to Ground or Open
HVAC	U0184-00	stored	Lost Communication With Radio-
HVAC	U11B8-00	stored	Lost Communication with Integrated Center Stack (ICS)-
MSM	U0147-00	stored	Lost Communication With Telematics Gateway-
AMP	U0184-00	stored	Lost Communication With Radio-
BCM	U0147-00	stored	Lost Communication With Telematics Gateway-
HSM	U0147-00	stored	Lost Communication With Telematics Gateway-
RADIO	U11B8-00	stored	Lost Communication with Integrated Center Stack (ICS)-



2014 WK 3.6L | VIN: 1C4RJFCG8EC [REDACTED]

ECU	Code	Status	Description
-----	------	--------	-------------

Device Serial Number: WSP-06326

Page 1

Device Software Version: 1.6.5

Mon Oct 20 2014



2014 WK 3.6L | VIN: 1C4RJFCG8EC [REDACTED]

Graph	Name	Value	Unit	Type
false	POSFIVE Backward 2	Not Set		Sensors
false	POSSIX Backward 3	Not Set		Sensors
false	Relase Button one	Not Set		Sensors
false	Release Button 2	Not Set		Sensors
false	Neutral LED	0.0000000000	Volts	Sensors

Device Serial Number: WSP-06326

Page 2

Device Software Version: 1.6.5

Mon Oct 20 2014

Graph	Name	Value	Unit	Type
false	Vehicle Battery Voltage	14.4	Volts	Sensors
false	Park LED	4.3137254902	Volts	Sensors
false	Reverse LED	0.0000000000	Volts	Sensors
false	Drive LED	0.0000000000	Volts	Sensors
false	Autostick LED	0.4509803922	Volts	Sensors
false	Position 0 (Idle)/ INIT Position after start	Not Set		Sensors
false	Position 6 (Mid Position) POSZERO	Set		Sensors
false	POS ONE Foreward 3	Not Set		Sensors
false	POSTWO Foreward 2	Not Set		Sensors
false	POSTHREE Foreward 1	Not Set		Sensors
false	POSFOUR Backward 1	Not Set		Sensors







TC 084

DUCATI



WE APPRECIATE YOUR BUSINESS!



WE APPRECIATE YOUR BUSINESS!

SALES



10/22/09

Location Profiles Wizard

Select Tool

Double-click row or select tool and press "Next". List refreshes automatically as tools are added or removed.

Hide Unresponsive Devices

Location	Yes	Edp	IP Address	Workgroup	Interface	Locked	Lock Owner
Baseline			10.172.206.172				
Perimeter							

Work in Standalone mode

Modify Location Profiles

Next >



ViewSonic





10:42:20
Camera Data Wizard

Select Tool
Double-click row or select tool and press "Next". List refreshes automatically as tools are added or removed.

Hide Unresponsive Devices

Device	Year	Body	IP Address	Workgroup	Interface	Locked	Lock Owner
Unresolved			10.252.246.172		Wi-Fi		
WIC-1000-2	2014	WIC	10.252.246.164				



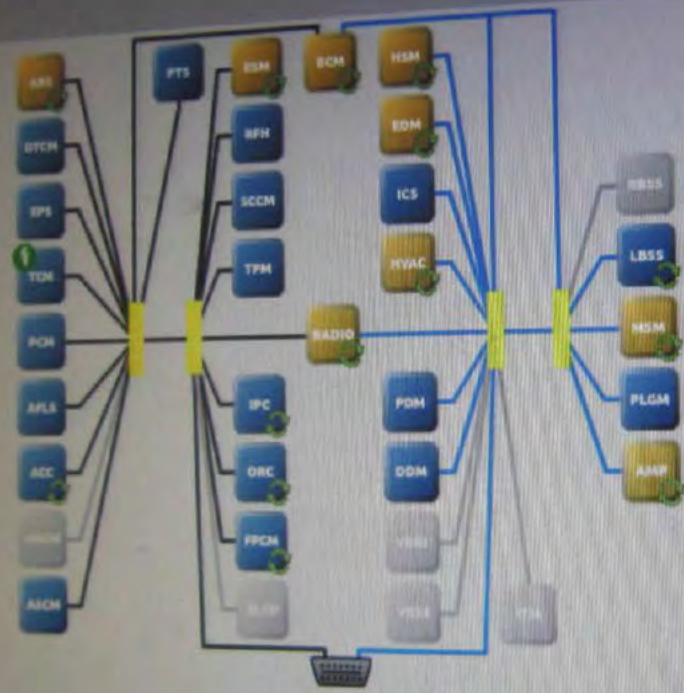
RRTs/Recalls

Click the "View Document" button that appears when you hover over your selection to open the desired document. Click on column heading to sort table.

Document Type	Number	Launch Date	Status	Description
RRT	14-250	2014-07-03	Complete	2014 WD WK BODY CONTROL MODULE ENHANCEMENT FLASH
RRT	13-071	2013-10-08	Complete	2013-2014 RA3 RA4 RADIO ENHANCEMENTS FLASH
RRT	13-086	2013-09-11	Complete	2014 WK 3.6L TRANS/TRANSFER CASE SHIFT ENHANCEMENT
Recall	RC-N58-13	2013-11-08	Complete	Third Revision Safety Recall N58 - Reprogram Instrument Cluster & ABS Module / Alt. Grd. Wire
Recall	RC-CN58-13	2013-11-08	Complete	SAFETY RECALL N58 - REPROGRAM INSTRUMENT CLUSTER AND ABS MODULE/ALTERNATOR GROUND
Recall	RC-IN58-13	2013-11-08	Complete	Third Revision Safety Recall N58 - Reprogram Instrument Cluster & ABS Module / Alt. Ground Wire
Recall	RC-P14-14	2014-05-16	Incomplete	Safety Recall P14 - Brake Booster
Recall	RC-CP14-14	2014-05-16	Incomplete	SAFETY RECALL P14 - BRAKE BOOSTER
Recall	RC-SP14-14	2014-05-16	Incomplete	Safety Recall P14 - Brake Booster
Recall	RC-P36-14	2014-06-19	Complete	Safety Recall P36 - Sun Visor
Recall	RC-CP36-14	2014-06-19	Complete	SAFETY RECALL P36 - SUN VISOR WIRING
Recall	RC-SP36-14	2014-06-19	Complete	Safety Recall P36 - Sun Visor Wiring

There are several documents that are pending release.

Click on an icon for complete details



Customer Preferences Vehicle Preparations

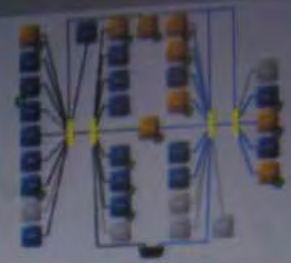
environmental data. Click on column heading to sort table.

Code	Status	Description
C0857-28	stored	Steering Wheel Position
P0796-14		

2014 WK3 SL
 VIN: 1CARLJFC8E0C [REDACTED]
 Battery: 14.37 volts

Legend

- Active ECU
- Non-responsive ECU
- ECU Disabled



All DTCs **Diagnostic Procedures** Customer Preferences Vehicle Preparations

Double-click row selection to view environmental data. Click on column heading to sort table.

All Active Stored Pending

ECU	Code	Status	Description
ABS	C0051-28	stored	Steering Wheel Position Sensor-Signal Bias Level Out of Range / Zero Adjustment Failure
ESM	PI086-14	stored	PRNDL Display-Circuit Short to Ground or Open
HVAC	U0184-00	stored	Lost Communication With Radio-
HVAC	U1188-00	stored	Lost Communication with Integrated Center Stack (ICS)-
HSM	U0147-00	stored	Lost Communication With Telematics Gateway-
AMP	U0184-00	stored	Lost Communication With Radio-
BCM	U0147-00	stored	Lost Communication With Telematics Gateway-
HSM	U0147-00	stored	Lost Communication With Telematics Gateway-
RADIO	U1188-00	stored	Lost Communication with Integrated Center Stack (ICS)-
ECM	U0141-00	stored	Lost Communication With IPM (FCM/TIPM)-
ECM	U0184-00	stored	Lost Communication With Radio-

Manufacturer Software Data (MSP) [REDACTED]



NUMBER: 21-007-13 REV. C

GROUP: Transmission and Transfer Case

DATE: December 18, 2013

This bulletin is supplied as technical information only and is not an authorization for repair. No part of this publication may be reproduced, stored in a retrieval system, or transmitted, in any form or by any means, electronic, mechanical, photocopying, or otherwise, without written permission of Chrysler Group LLC.

THIS SERVICE BULLETIN IS ALSO BEING RELEASED AS RAPID RESPONSE TRANSMITTAL (RRT) 13-066. ALL APPLICABLE SOLD AND UN-SOLD RRT VIN'S HAVE BEEN LOADED. TO VERIFY THAT THIS RRT SERVICE ACTION IS APPLICABLE TO THE VEHICLE, USE VIP OR PERFORM A VIN SEARCH IN TECHCONNECT. ALL REPAIRS ARE REIMBURSABLE WITHIN THE PROVISIONS OF WARRANTY.

THIS BULLETIN SUPERSEDES SERVICE BULLETIN 21-007-13 REV. B, DATED OCTOBER 12, 2013, WHICH SHOULD BE REMOVED FROM YOUR FILES. ALL REVISIONS ARE HIGHLIGHTED WITH **ASTERISKS** AND INCLUDE ADDITIONAL SPECIFIC TRANSMISSION SHIFT QUALITY ENHANCEMENTS.

THE WITECH SOFTWARE LEVEL MUST BE AT RELEASE 14.01 OR HIGHER TO PERFORM THIS PROCEDURE.

SUBJECT:

Shift, Transmission and Transfer Case Shift Enhancements



NUMBER: 21-030-14

GROUP: Transmission and Transfer Case

DATE: September 26, 2014

This bulletin is supplied as technical information only and is not an authorization for repair. No part of this publication may be reproduced, stored in a retrieval system, or transmitted, in any form or by any means, electronic, mechanical, photocopying, or otherwise, without written permission of Chrysler Group LLC.

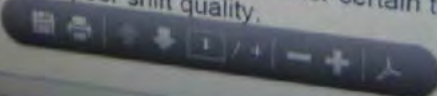
HELP USING THE wiTECH DIAGNOSTIC APPLICATION FOR FLASHING AN ECU IS AVAILABLE BY SELECTING "HELP" THEN "HELP CONTENTS" AT THE TOP OF THE wiTECH DIAGNOSTIC APPLICATION WINDOW.

THE wiTECH SOFTWARE VERSION MUST BE AT 15.01 OR HIGHER TO PERFORM THIS PROCEDURE.

SUBJECT:
845RE Transmission Quick Learn Procedure

OVERVIEW:
This bulletin provides information on how to perform the new scan tool based transmission Quick Learn procedure. This procedure is required after certain transmission repairs or to remedy a customer's concern of poor shift quality.

MODELS:



Microsoft

Windows 7
Taskbar icons including Start, Internet Explorer, and system tray icons.



ESM View

Click on selected sensor sensor ID to view data and information for the selected ECU.

- Task
- Data
- ECU
- Actuators
- System Tests
- Misc Functions
- ECU Details

Double-click row selection to graph data element, or check multiple elements and press "Show Graph". Click on column heading to sort table. Drag and drop row or multiple row selections to re-order table elements.

[Show Graph](#)

Graph	Name	Value	Unit	Type
<input type="checkbox"/>	Vehicle Battery Voltage	14.6	Volts	Sensors
<input type="checkbox"/>	Park LED	4.2941176471	Volts	Sensors
<input type="checkbox"/>	Reverse LED	0.0000000000	Volts	Sensors
<input type="checkbox"/>	Drive LED	0.0000000000	Volts	Sensors
<input type="checkbox"/>	Autostick LED	0.4509803922	Volts	Sensors
<input type="checkbox"/>	Position 0 (idle) / INT Position after start	Not Set		Sensors
<input type="checkbox"/>	Position 6 (hold Position) POS ZERO	Set		Sensors
<input type="checkbox"/>	POS ONE Forward 3	Not Set		Sensors
<input type="checkbox"/>	POS TWO Forward 2	Not Set		Sensors
<input type="checkbox"/>	POS THREE Forward 1	Not Set		Sensors
<input type="checkbox"/>	POS FOUR Backward 1	Not Set		Sensors
<input type="checkbox"/>	POS FIVE Backward 2	Not Set		Sensors
<input type="checkbox"/>	POS SIX Backward 3	Not Set		Sensors
<input type="checkbox"/>	Release Button one	Not Set		Sensors
<input type="checkbox"/>	Release Button 2	Not Set		Sensors
<input type="checkbox"/>	Neutral LED	Not Set		Sensors
<input type="checkbox"/>		0.0000000000	Volts	Sensors

Chassis

Name

Part Number:

Bus Type:

Hardware Version:

Software Version:

Spare Part Number:

ECU Code:

Software Number:

Hardware Number:

Original VIN:

Current VIN:

Variant & Versions:

Country Code:

© 2007 Bosch

Disconnect Warnings: 0 Errors: 0



Select Tool
 Double-click a row or select tool and press "Next". List refreshes automatically as tools are added or removed.

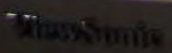
Hide Unavailable Devices

Device	Year	Body	IP Address	Workgroup	Interface	Locked	Lock Owner
MicroPod-2	2014	WR	10.252.246.164		Wi-Fi		Grant(0050BA8B2316)-WITECH
POD-2	2011	KA	10.252.246.160		Wi-Fi		

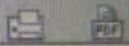
Work in standalone mode

Modify Location Profiles

Next



<input type="checkbox"/>	Cruise System Is Controlling Speed	False		Sensors
<input type="checkbox"/>	Brake Pedal State	False		Sensors
<input type="checkbox"/>	Brake Intervention by ESP Active	False		Sensors
<input type="checkbox"/>	Brake Intervention by assistance system active	False		Sensors
<input type="checkbox"/>	Master cylinder pressure	0	psi	Sensors
<input type="checkbox"/>	Wheel RPM Front Left	0.0	rpm	Sensors
<input type="checkbox"/>	Wheel RPM Front Right	0.0	rpm	Sensors
<input type="checkbox"/>	Wheel RPM Rear Left	0.0	rpm	Sensors
<input type="checkbox"/>	Wheel RPM Rear Right	0.0	rpm	Sensors
<input type="checkbox"/>	Transfer Case Status	Auto		Sensors
<input type="checkbox"/>	Oil Temperature	181	°F	Sensors
<input type="checkbox"/>	Current Gear	Current Gear "P"		Sensors
<input type="checkbox"/>	Trans A/C Converter Clutch Slipping	False		Sensors
<input type="checkbox"/>	PRND Status	Lever in position "P"		Sensors



Disconnect

Warnings: 0 Errors: 0

2:59 PM

ViewSonic

<input type="checkbox"/>	Brake Pedal State	Pedal Pressed		Sensors
<input type="checkbox"/>	Brake Intervention by ESP Active	False		Sensors
<input type="checkbox"/>	Brake Intervention by assistance system active	False		Sensors
<input type="checkbox"/>	Master cylinder pressure	859	psi	Sensors
<input type="checkbox"/>	Wheel RPM Front Left	0.0	rpm	Sensors
<input type="checkbox"/>	Wheel RPM Front Right	0.0	rpm	Sensors
<input type="checkbox"/>	Wheel RPM Rear Left	0.0	rpm	Sensors
<input type="checkbox"/>	Wheel RPM Rear Right	0.0	rpm	Sensors
<input type="checkbox"/>	Transfer Case Status	Auto		Sensors
<input type="checkbox"/>	Oil Temperature	183	*F	Sensors
<input type="checkbox"/>	Current Gear	Current Gear "R"		Sensors
<input type="checkbox"/>	Trans A/C Converter Clutch Slipping	False		Sensors
<input type="checkbox"/>	PRND Status	Lever in Position "R"		Sensors


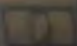
Disconnect

Warnings: 0 Errors: 0

System tray icons including network, volume, and power, along with the time 3:00 PM.

ViewSonic



Allow TRANS Torque Request	27	rpm	Sensors
Cruise System Is Controlling Speed	True		Sensors
Brake Pedal State	False		Sensors
Brake Intervention by ESP Active	Pedal Pressed		Sensors
Brake intervention by assistance system active	False		Sensors
Master cylinder pressure	1166	psi	Sensors
Wheel RPM Front Left	0.0	rpm	Sensors
Wheel RPM Front Right	0.0	rpm	Sensors
Wheel RPM Rear Left	0.0	rpm	Sensor  
Wheel RPM Rear Right	0.0	rpm	Sensors
Transfer Case Status	Auto		Sensors
Oil Temperature	185	°F	Sensors
Current Gear	Current gear "N"		Sensors
Trans A/C Converter Clutch Slipping	False		Sensors
PRND Status	Lever in Position "N"		Sensors

Disconnect

Warnings: 3 Errors



ViewSonic

Brake intervention by ABS	1204	psi	Sensors
Master cylinder pressure	0.0	rpm	Sensors
Wheel RPM Front Left	0.0	rpm	Sensors
Wheel RPM Front Right	0.0	rpm	Sensors
Wheel RPM Rear Left	0.0	rpm	Sensors
Wheel RPM Rear Right	0.0	rpm	Sensors
Transfer Case Status	Auto		Sensors
Oil Temperature	189	°F	Sensors
Current Gear	Current Gear "1"		Sensors
Trans A/C Converter Clutch Slipping	False		Sensors
PRND Status	Lever in position "D"		Sensors

Disconnect

ViewSonic









3.6L
VVT







OWNER'S MANUAL IN THE TRUNK
STEEL

OK



DOT MB 1/12 1/8

25-0711-6262 4

D4779977AA

ARCC

MANUAL OR TIRE PLACARD



112

113

114

115

116

























MFS 265/50R20

107T

ROADWARRIOR





15073







BRAKE +



Press Brake
and
Push Button
to Start

RPM
x1000



A vertical stack of icons on the left side of the instrument cluster. From top to bottom: a car icon, an up arrow, a fuel pump icon, a down arrow, a 'Trip' button icon, and a red steering wheel with an exclamation mark icon.

P

PM
000



68°F

7:48



26138 mi



7:48

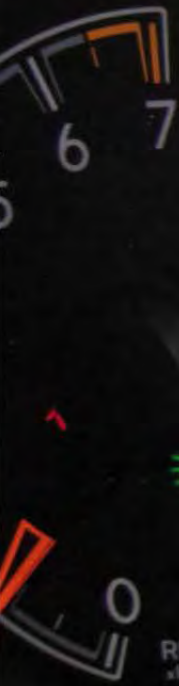
68°F



Press Brake
and
Push Button
to Shift
into Gear

26138 mi

N



0

000

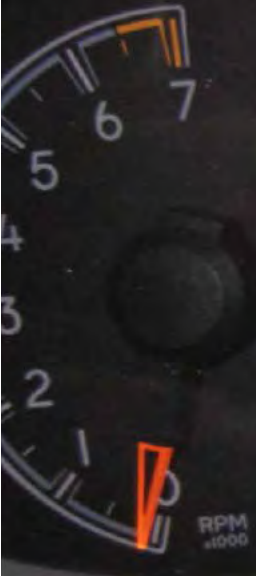
68°F

7:48



S
D





Press Brake
and
Push Button
to Start







2014 WK 3.6L | VIN: 1C4RJFCG8E0 [REDACTED]

New Part Number	Description
68225560AD	2014 WK 3.6L 4WD WDTCM NAFTA

Device Serial Number: WSP-06326

Page 1

Device Software Version: 1.6.5

Mon Oct 20 2014



2014 WK 3.6L | VIN: 1C4RJFCG8EC [REDACTED]

ECU	Code	Status	Description
EDM	U0184-00	stored	Lost Communication With Radio-

Device Serial Number: WSP-06326

Page 2

Device Software Version: 1.6.5

Mon Oct 20 2014

ECU	Code	Status	Description
ABS	C0051-28	stored	Steering Wheel Position Sensor-Signal Bias Level Out of Range / Zero Adjustment Failure
ESM	P1C86-14	stored	PRNDL Display-Circuit Short to Ground or Open
HVAC	U0184-00	stored	Lost Communication With Radio-
HVAC	U11B8-00	stored	Lost Communication with Integrated Center Stack (ICS)-
MSM	U0147-00	stored	Lost Communication With Telematics Gateway-
AMP	U0184-00	stored	Lost Communication With Radio-
BCM	U0147-00	stored	Lost Communication With Telematics Gateway-
HSM	U0147-00	stored	Lost Communication With Telematics Gateway-
RADIO	U11B8-00	stored	Lost Communication with Integrated Center Stack (ICS)-



2014 WK 3.6L | VIN: 1C4RJFCG8EC [REDACTED]

ECU	Code	Status	Description
-----	------	--------	-------------

Device Serial Number: WSP-06326

Page 1

Device Software Version: 1.6.5

Mon Oct 20 2014



2014 WK 3.6L | VIN: 1C4RJFCG8E0 [REDACTED]

Graph	Name	Value	Unit	Type
false	POSFIVE Backward 2	Not Set		Sensors
false	POSSIX Backward 3	Not Set		Sensors
false	Relase Button one	Not Set		Sensors
false	Release Button 2	Not Set		Sensors
false	Neutral LED	0.0000000000	Volts	Sensors

Device Serial Number: WSP-06326

Page 2

Device Software Version: 1.6.5

Mon Oct 20 2014

Graph	Name	Value	Unit	Type
false	Vehicle Battery Voltage	14.4	Volts	Sensors
false	Park LED	4.3137254902	Volts	Sensors
false	Reverse LED	0.0000000000	Volts	Sensors
false	Drive LED	0.0000000000	Volts	Sensors
false	Autostick LED	0.4509803922	Volts	Sensors
false	Position 0 (Idle)/ INIT Position after start	Not Set		Sensors
false	Position 6 (Mid Position) POSZERO	Set		Sensors
false	POS ONE Foreward 3	Not Set		Sensors
false	POSTWO Foreward 2	Not Set		Sensors
false	POSTHREE Foreward 1	Not Set		Sensors
false	POSFOUR Backward 1	Not Set		Sensors

Graph	Name	Value	Unit	Type
false	Current Gear	Current Gear "P"		Sensors
false	Trans A/C Converter Clutch Slipping	False		Sensors
false	PRND Status	Lever in position		Sensors

Device Serial Number: WSP-06326

Page 7

Device Software Version: 1.6.5

Mon Oct 20 2014



2014 WK 3.6L | VIN: 1C4RJFCG8EC [REDACTED]

Graph	Name	Value	Unit	Type
false	Current Gear	Current Gear "R"		Sensors
false	Trans A/C Converter Clutch Slipping	False		Sensors
false	PRND Status	Lever in Position		Sensors

Device Serial Number: WSP-06326

Page 7

Device Software Version: 1.6.5

Mon Oct 20 2014



2014 WK 3.6L | VIN: 1C4RJFCG8E0 [REDACTED]

Graph	Name	Value	Unit	Type
false	Current Gear	Current gear "N"		Sensors
false	Trans A/C Converter Clutch Slipping	False		Sensors
false	PRND Status	Lever in Position		Sensors

Device Serial Number: WSP-06326

Page 7

Device Software Version: 1.6.5

Mon Oct 20 2014



2014 WK 3.6L | VIN: 1C4RJFCG8EC [REDACTED]

Graph	Name	Value	Unit	Type
false	Current Gear	Current Gear "1"		Sensors
false	Trans A/C Converter Clutch Slipping	False		Sensors
false	PRND Status	Lever in position		Sensors

Device Serial Number: WSP-06326

Page 7

Device Software Version: 1.6.5

Mon Oct 20 2014

Document Type	Number	Launch Date	Status	Description
Recall	RC-IN58-13	2013-11-08	Complete	Third Revision Safety Recall N58 - Reprogram Instrument Cluster & ABS Module / Alt. Ground Wire
Recall	RC-P14-14	2014-05-16	Incomplete	Safety Recall P14 - Brake Booster
Recall	RC-CP14-14	2014-05-16	Incomplete	SAFETY RECALL P14 - BRAKE BOOSTER
Recall	RC-IP14-14	2014-05-16	Incomplete	Safety Recall P14 - Brake Booster
Recall	RC-P36-14	2014-08-19	Complete	Safety Recall P36 - Sun Visor
Recall	RC-CP36-14	2014-08-19	Complete	SAFETY RECALL P36 - SUN VISOR WIRING
Recall	RC-IP36-14	2014-08-19	Complete	Safety Recall P36 - Sun Visor Wiring

Device Serial Number: WSP-06326

Page 2

Device Software Version: 1.6.5

Mon Oct 20 2014

Document Type	Number	Launch Date	Status	Description
RRT	14-050	2014-07-03	Complete	2014 WD WK BODY CONTROL MODULE ENHANCEMENT FLASH
RRT	13-071	2013-10-08	Complete	2013-2014 RA3 RA4 RADIO ENHANCEMENTS FLASH
RRT	13-066	2013-09-11	Complete	2014 WK 3.6L TRANS/TRANSFER CASE SHIFT ENHANCEMENT
Recall	RC-N58-13	2013-11-08	Complete	Third Revision Safety Recall N58 - Reprogram Instrument Cluster & ABS Module / Alt. Grd. Wire
Recall	RC-CN58-13	2013-11-08	Complete	SAFETY RECALL N58 - REPROGRAM INSTRUMENT CLUSTER AND ABS MODULE/ ALTERNATOR GROUND WIRE

Device Serial Number: WSP-06326

Page 1

Device Software Version: 1.6.5

Mon Oct 20 2014



2014 WK 3.6L | VIN: 1C4RJFCG8EC [REDACTED]

New Part Number	Description
68225560AD	2014 WK 3.6L 4WD WDTCM NAFTA

Device Serial Number: WSP-06326

Page 1

Device Software Version: 1.6.5

Mon Oct 20 2014



2014 WK 3.6L | VIN: 1C4RJFCG8EC [REDACTED]

ECU	Code	Status	Description
EDM	U0184-00	stored	Lost Communication With Radio-

Device Serial Number: WSP-06326

Page 2

Device Software Version: 1.6.5

Mon Oct 20 2014

ECU	Code	Status	Description
ABS	C0051-28	stored	Steering Wheel Position Sensor-Signal Bias Level Out of Range / Zero Adjustment Failure
ESM	P1C86-14	stored	PRNDL Display-Circuit Short to Ground or Open
HVAC	U0184-00	stored	Lost Communication With Radio-
HVAC	U11B8-00	stored	Lost Communication with Integrated Center Stack (ICS)-
MSM	U0147-00	stored	Lost Communication With Telematics Gateway-
AMP	U0184-00	stored	Lost Communication With Radio-
BCM	U0147-00	stored	Lost Communication With Telematics Gateway-
HSM	U0147-00	stored	Lost Communication With Telematics Gateway-
RADIO	U11B8-00	stored	Lost Communication with Integrated Center Stack (ICS)-



2014 WK 3.6L | VIN: 1C4RJFCG8EC [REDACTED]

ECU	Code	Status	Description
-----	------	--------	-------------

Device Serial Number: WSP-06326

Page 1

Device Software Version: 1.6.5

Mon Oct 20 2014



2014 WK 3.6L | VIN: 1C4RJFCG8E0 [REDACTED]

Graph	Name	Value	Unit	Type
false	POSFIVE Backward 2	Not Set		Sensors
false	POSSIX Backward 3	Not Set		Sensors
false	Relase Button one	Not Set		Sensors
false	Release Button 2	Not Set		Sensors
false	Neutral LED	0.0000000000	Volts	Sensors

Device Serial Number: WSP-06326

Page 2

Device Software Version: 1.6.5

Mon Oct 20 2014



2014 WK 3.6L | VIN: 1C4RJFCG8EC [REDACTED]

Graph	Name	Value	Unit	Type
false	Vehicle Battery Voltage	14.4	Volts	Sensors
false	Park LED	4.3137254902	Volts	Sensors
false	Reverse LED	0.0000000000	Volts	Sensors
false	Drive LED	0.0000000000	Volts	Sensors
false	Autostick LED	0.4509803922	Volts	Sensors
false	Position 0 (Idle)/ INIT Position after start	Not Set		Sensors
false	Position 6 (Mid Position) POSZERO	Set		Sensors
false	POS ONE Foreward 3	Not Set		Sensors
false	POSTWO Foreward 2	Not Set		Sensors
false	POSTHREE Foreward 1	Not Set		Sensors
false	POSFOUR Backward 1	Not Set		Sensors

Device Serial Number: WSP-06326

Page 1

Device Software Version: 1.6.5

Mon Oct 20 2014

MFD BY CHRYSLER GROUP LLC

DATE OF MFR(BUILT): 4-13

GAWR FRONT: 1452 KG 3200 LB WITH RIMS AT 20X8.0
GAWR REAR: 1679 KG 3700 LB WITH RIMS AT 20X8.0

GWR: 2949 KG 6500 LB
265/50R20 TIRES
250 KPA (36 PSI) COLD
265/50R20 TIRES
250 KPA (36 PSI) COLD



THIS VEHICLE CONFORMS TO ALL APPLICABLE U.S.A. FEDERAL MOTOR VEHICLE SAFETY STANDARDS IN EFFECT ON THE DATE OF MANUFACTURE SHOWN ABOVE.
VIN: 1C4RJFCG8 [REDACTED] TYPE: MPV
VEHICLE MADE IN U.S.A. PAINT: PW7 TRIM: GL29

2:31

72°F



Key Fob
has Left
the Vehicle

P

Navigation icons: a car icon, an up arrow, a fuel pump icon, a down arrow, a 'trip' icon, and a red car icon.

26137 mi



We Take Pride
In Your Vehicle!









TOP DOLLAR FOR YOUR CAR  GET





72°F



ON

⏏

⏏

⏏



72°F



Key Fob
has Left
the Vehicle

26137 mi

- Oil pressure warning icon
- Low fuel warning icon
- ABS warning icon
- Brake system warning icon
- Engine temperature warning icon
- Door ajar warning icon
- Seat belt warning icon

DATE CODE 01813
8562

101 101 101

88740







1071

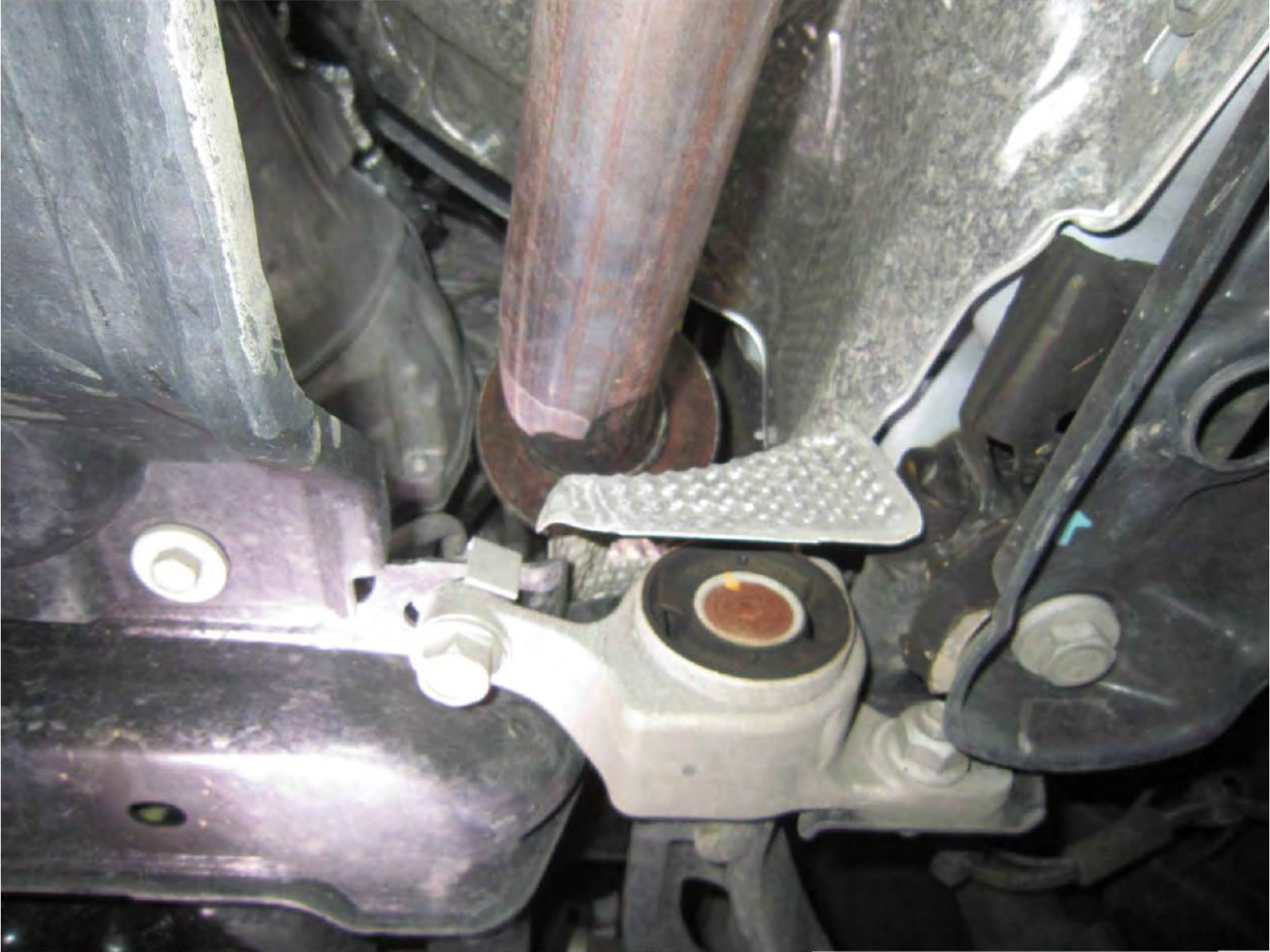
265/50R20

TRACTION

390

TREADWEAR























Graph	Name	Value	Unit	Type
false	Current Gear	Current Gear "P"		Sensors
false	Trans A/C Converter Clutch Slipping	False		Sensors
false	PRND Status	Lever in position		Sensors

Device Serial Number: WSP-06326

Page 7

Device Software Version: 1.6.5

Mon Oct 20 2014



2014 WK 3.6L | VIN: 1C4RJFCG8EC [REDACTED]

Graph	Name	Value	Unit	Type
false	Current Gear	Current Gear "R"		Sensors
false	Trans A/C Converter Clutch Slipping	False		Sensors
false	PRND Status	Lever in Position		Sensors

Device Serial Number: WSP-06326

Page 7

Device Software Version: 1.6.5

Mon Oct 20 2014



2014 WK 3.6L | VIN: 1C4RJFCG8E0 [REDACTED]

Graph	Name	Value	Unit	Type
false	Current Gear	Current gear "N"		Sensors
false	Trans A/C Converter Clutch Slipping	False		Sensors
false	PRND Status	Lever in Position		Sensors

Device Serial Number: WSP-06326

Page 7

Device Software Version: 1.6.5

Mon Oct 20 2014



2014 WK 3.6L | VIN: 1C4RJFCG8EC [REDACTED]

Graph	Name	Value	Unit	Type
false	Current Gear	Current Gear "1"		Sensors
false	Trans A/C Converter Clutch Slipping	False		Sensors
false	PRND Status	Lever in position		Sensors

Device Serial Number: WSP-06326

Page 7

Device Software Version: 1.6.5

Mon Oct 20 2014

Document Type	Number	Launch Date	Status	Description
Recall	RC-IN58-13	2013-11-08	Complete	Third Revision Safety Recall N58 - Reprogram Instrument Cluster & ABS Module / Alt. Ground Wire
Recall	RC-P14-14	2014-05-16	Incomplete	Safety Recall P14 - Brake Booster
Recall	RC-CP14-14	2014-05-16	Incomplete	SAFETY RECALL P14 - BRAKE BOOSTER
Recall	RC-IP14-14	2014-05-16	Incomplete	Safety Recall P14 - Brake Booster
Recall	RC-P36-14	2014-08-19	Complete	Safety Recall P36 - Sun Visor
Recall	RC-CP36-14	2014-08-19	Complete	SAFETY RECALL P36 - SUN VISOR WIRING
Recall	RC-IP36-14	2014-08-19	Complete	Safety Recall P36 - Sun Visor Wiring

Device Serial Number: WSP-06326

Page 2

Device Software Version: 1.6.5

Mon Oct 20 2014



2014 WK 3.6L | VIN: 1C4RJFCG8EC [REDACTED]

Document Type	Number	Launch Date	Status	Description
RRT	14-050	2014-07-03	Complete	2014 WD WK BODY CONTROL MODULE ENHANCEMENT FLASH
RRT	13-071	2013-10-08	Complete	2013-2014 RA3 RA4 RADIO ENHANCEMENTS FLASH
RRT	13-066	2013-09-11	Complete	2014 WK 3.6L TRANS/TRANSFER CASE SHIFT ENHANCEMENT
Recall	RC-N58-13	2013-11-08	Complete	Third Revision Safety Recall N58 - Reprogram Instrument Cluster & ABS Module / Alt. Grd. Wire
Recall	RC-CN58-13	2013-11-08	Complete	SAFETY RECALL N58 - REPROGRAM INSTRUMENT CLUSTER AND ABS MODULE/ ALTERNATOR GROUND WIRE

Device Serial Number: WSP-06326

Page 1

Device Software Version: 1.6.5

Mon Oct 20 2014

MFD BY CHRYSLER GROUP LLC

DATE OF MFR(BUILT): 4-13

GAWR FRONT: 1452 KG 3200 LB WITH RIMS AT 20X8.0

GAWR REAR: 1679 KG 3700 LB WITH RIMS AT 20X8.0

GWR: 2949 KG 6500 LB
265/50R20 TIRES
250 KPA (36 PSI) COLD
265/50R20 TIRES
250 KPA (36 PSI) COLD



THIS VEHICLE CONFORMS TO ALL APPLICABLE U.S.A. FEDERAL MOTOR VEHICLE SAFETY STANDARDS IN EFFECT ON THE DATE OF MANUFACTURE SHOWN ABOVE.
VIN: 1C4RJFCG8 [REDACTED] TYPE: MPV
VEHICLE MADE IN U.S.A. PAINT: PW7 TRIM: GL29

2:31

72°F



Key Fob
has Left
the Vehicle

26137 mi

Navigation icons: a car icon, an up arrow, a fuel pump icon, a down arrow, a "trip" icon, and a red car icon.

P



We Take Pride
In Your Vehicle!

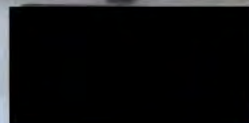
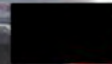








TOP DOLLAR FOR YOUR CAR  GET





72°F



RPM
x1000

Central digital display showing a red car icon, a 'No' symbol, and a downward-pointing arrow.



ParkSense
Ready

26137 mi

Steering wheel controls including a parking brake icon, a headlight icon with 'ON', and a lane assist icon.



72°F



RPM
x1000



Key Fob
has Left
the Vehicle

26137 mi

DATE CODE 01813
8562

101 101 101

88740







165/50R20 107T

TREADWEAR 390 TRICHON























Graph	Name	Value	Unit	Type
false	Current Gear	Current Gear "P"		Sensors
false	Trans A/C Converter Clutch Slipping	False		Sensors
false	PRND Status	Lever in position		Sensors

Device Serial Number: WSP-06326

Page 7

Device Software Version: 1.6.5

Mon Oct 20 2014



2014 WK 3.6L | VIN: 1C4RJFCG8EC [REDACTED]

Graph	Name	Value	Unit	Type
false	Current Gear	Current Gear "R"		Sensors
false	Trans A/C Converter Clutch Slipping	False		Sensors
false	PRND Status	Lever in Position		Sensors

Device Serial Number: WSP-06326

Page 7

Device Software Version: 1.6.5

Mon Oct 20 2014



2014 WK 3.6L | VIN: 1C4RJFCG8E0 [REDACTED]

Graph	Name	Value	Unit	Type
false	Current Gear	Current gear "N"		Sensors
false	Trans A/C Converter Clutch Slipping	False		Sensors
false	PRND Status	Lever in Position		Sensors

Device Serial Number: WSP-06326

Page 7

Device Software Version: 1.6.5

Mon Oct 20 2014



2014 WK 3.6L | VIN: 1C4RJFCG8EC [REDACTED]

Graph	Name	Value	Unit	Type
false	Current Gear	Current Gear "1"		Sensors
false	Trans A/C Converter Clutch Slipping	False		Sensors
false	PRND Status	Lever in position		Sensors

Device Serial Number: WSP-06326

Page 7

Device Software Version: 1.6.5

Mon Oct 20 2014

Document Type	Number	Launch Date	Status	Description
Recall	RC-IN58-13	2013-11-08	Complete	Third Revision Safety Recall N58 - Reprogram Instrument Cluster & ABS Module / Alt. Ground Wire
Recall	RC-P14-14	2014-05-16	Incomplete	Safety Recall P14 - Brake Booster
Recall	RC-CP14-14	2014-05-16	Incomplete	SAFETY RECALL P14 - BRAKE BOOSTER
Recall	RC-IP14-14	2014-05-16	Incomplete	Safety Recall P14 - Brake Booster
Recall	RC-P36-14	2014-08-19	Complete	Safety Recall P36 - Sun Visor
Recall	RC-CP36-14	2014-08-19	Complete	SAFETY RECALL P36 - SUN VISOR WIRING
Recall	RC-IP36-14	2014-08-19	Complete	Safety Recall P36 - Sun Visor Wiring

Device Serial Number: WSP-06326

Page 2

Device Software Version: 1.6.5

Mon Oct 20 2014



2014 WK 3.6L | VIN: 1C4RJFCG8EC [REDACTED]

Document Type	Number	Launch Date	Status	Description
RRT	14-050	2014-07-03	Complete	2014 WD WK BODY CONTROL MODULE ENHANCEMENT FLASH
RRT	13-071	2013-10-08	Complete	2013-2014 RA3 RA4 RADIO ENHANCEMENTS FLASH
RRT	13-066	2013-09-11	Complete	2014 WK 3.6L TRANS/TRANSFER CASE SHIFT ENHANCEMENT
Recall	RC-N58-13	2013-11-08	Complete	Third Revision Safety Recall N58 - Reprogram Instrument Cluster & ABS Module / Alt. Grd. Wire
Recall	RC-CN58-13	2013-11-08	Complete	SAFETY RECALL N58 - REPROGRAM INSTRUMENT CLUSTER AND ABS MODULE/ ALTERNATOR GROUND WIRE

Device Serial Number: WSP-06326

Page 1

Device Software Version: 1.6.5

Mon Oct 20 2014

PE15-030

FLAT CHRYSLER

11-24-2015

ENCLOSURE 4

CAIR Backup



From: [REDACTED]
To: customerassist@chrysler.com
Date: Fri Oct 17 10:12:22 EDT 2014
Subject: Chrysler Group LLC Customer Assistance
Form Selected:

Category: US Customer Service

Brief Description:

Dangerous trans. shifter

Comments:

My 2014 GR Cher has the most dangerous shifter design I've ever used in a motor vehicle!

The ignition switch does not kill the engine if the vehicle is in gear and the shifter does not always enter Park when operated. Combined with the quiet of the motor, ambient noise may make it impossible to know that the vehicle is in gear with the motor running!

After pulling into my garage with landscapers working in the yard, I thought I had placed the vehicle into Park and hit the ignition button to turn it off. Unfortunately, the shifter kept the car engaged in Reverse.

Not only did the engine not shut off, but the vehicle began to drive backward as I exited the driver's seat.

Fortunately, I jumped back into the vehicle and avoided being crushed between the open car door and the garage door frame.

Unfortunately, the car backed out of the garage with the door open causing \$4,000 damage to the vehicle.

This is my 8th Grand Cherokee (since 1983) and I am very, very unhappy with Jeep's designers. This needs to be fixed. And I should be made whole for the \$4,000 body work!

Sender Information:

Title:

First Name: [REDACTED]

[REDACTED]

[REDACTED]

From: customerassist@chrysler.com

To: [REDACTED]

Date: Thu Oct 23 11:30:12 EDT 2014

Subject: Re: Chrysler Group LLC Customer Assistance

Dear [REDACTED]

Thank you for contacting the Jeep Customer Assistance Center.

I am sorry to learn of the trans. shifter issue that you had with your Jeep Grand Cherokee causing damage to your vehicle, Thomas. Your concerns, particularly in view of the inconvenience involved in this issue, are understandable and I appreciate the time and effort you took to bring this matter to my attention.

I do apologize but you would have to go through your car insurance to get your repair work covered.

Thank you again for your email. Should you require additional assistance, or have any new information to provide, please reply to this email message or call 1-877-I-AM-JEEP (1-877-426-5337).

Sincerely,

Jody

Customer Service Representative

Jeep Customer Assistance Center

For any future communications related to this email, please refer to the following information:

REFERENCE NUMBER: [REDACTED] 6

EMAIL CASE NUMBER: [REDACTED]

REPLY LINK:

http://www.chrysler.com/wccs/brand_forms/us/reply.jsp?trk_ID=KMM8853473V78212L0KM&

Original Message Follows:

US Customer Service - Jeep Brand Site

Brief Description:

Dangerous trans. shifter

Comments:

My 2014 GR Cher has the most dangerous shifter design I've ever used in a motor vehicle! The ignition switch does not kill the engine if the vehicle is in gear and the shifter does not always enter Park when operated.

Combined with the quiet of the motor, ambient noise may make it impossible to know that the vehicle is in gear with the motor running! After pulling into my garage with landscapers working in the yard, I thought I had placed the vehicle into Park and hit the ignition button to turn it off.

Unfortunately, the shifter kept the car engaged in Reverse. Not only did the engine not shut off, but the vehicle began to drive backward as I exited the driver's seat. Fortunately, I jumped back into the vehicle and avoided being crushed between the open car door and the garage door frame.

Unfortunately, the car backed out of the garage with the door open causing \$4,000 damage to the vehicle. This is my 8th Grand Cherokee (since 1983) and I am very, very unhappy with Jeep's designers. This needs to be fixed. And I should be made whole for the \$4,000 body work!

VIN:

EC [REDACTED]

Mileage:

2011

Servicing Dealer:

Bournival

Title:

First Name:

[REDACTED]
[REDACTED]

[REDACTED]

[REDACTED]

[REDACTED]

[REDACTED]

Address 2:

City:

North Hampton

State:

NH

Zip:

[REDACTED]

[REDACTED]

[REDACTED]

[REDACTED]

[REDACTED]

PE15-030

FLAT CHRYSLER

11-24-2015

ENCLOSURE 4

CAIR Backup



Forsythe®

COSMETIC GROUP, LTD.

Fax
Cover

P.O. BOX 431
LAWRENCE, NY 11559
PHONE : 516-239-4200 FAX : 516-239-4745
e-mail : info@cosmeticgroup.com
website : www.cosmeticgroup.com

To: CUSTOMER CARE From: ALLEN MATZA
Company: _____ Pages: 4
Fax #: 877-768-5076 Date: November 3, 2014
Subject: RE-IMBURSEMENT

EAST HILLS JEEP
SERVICE MANAGER ERIC 516-621-9191
CARE # [REDACTED]

MY NAME IS [REDACTED]
I CAN BE REACHED AT [REDACTED]
PLEASE CALL ME IF I CAN BE OF ASSISTANCE



Fax # 877-768-5076

2300 Northern Blvd. Greenville, NY 11548 516-621-9191 www.easthillsjeep.com

CARE #

1-800-892-1997

[REDACTED]		VEHICLE IDENTIFICATION		MILEAGE OUT		DATE OUT		INVOICE NO.	
[REDACTED]		1C4RJFBG0EC [REDACTED]		40937		10/30/14		[REDACTED]	
BEDFORD NY [REDACTED]		YEAR		MAKE		MODEL		COLOR	
[REDACTED]		14		JEEP		GR CHEROKEE		BK	
CUST. NO.		LICENSE		HOME PHONE		WORK PHONE		STOCK NO.	
5821650		[REDACTED]		[REDACTED]		-		GC2823	
PROD. DATE		SERV. ADV.		TERMS		CASH			
00/00/00		9							
CUST. LABOR RATE		DELIV. DATE		DELIV. MILES		MILEAGE IN		DATE IN	
135.0		07/31/13		84		40935		10/20/14	
IN-SERV DATE		E6272501143000369240							
07/31/13									

SERVICE HOURS: MON-THU 7:30 - 8:00 SAT 8:00- 5:00 FRI 7:30 - 7:00 NYS REPAIR SHOP #R1301371 NYS REPAIR SHOP # 1301371

LINE	OP. CODE	FAIL-CD	TECH.	HOURS/QTY	TYPE	AMOUNT
G +						
Com Customer states P36 SUNVISOR WIRING						
Cau CAMPAIGN						
Cor COMPLETED						
0			D14		W	
			CBXDP361AA SPACER	VISOR	1 W	
						Line Total.....
H +						
Com VALUE CAR RENTAL SPOKE TO PAT CAIR# 25843414						
0			D99		W	
			SUBLET VALUE CAR RENTAL	RENTAL	1 W	
						Line Total.....

Warranty Claim Type: W

Authorization Code:

2/10/14
EXT TO PAY 315.00
COST TO PPA 218.81

Labor	270.00
Parts	245.00
Sales Tax	45.02
Labor-Other	1.00
Misc Tax	33.21-
Parts-Other	6.00
TOTAL-CUST-CRCARD	533.81

CUSTOMER COPY - PAGE 03

Printed: 10/30/2014 @ 16:39

STATEMENT OF DISCLAIMER
The factory warranty constitutes all of the warranties with respect to the sale of this item/items. The Seller hereby expressly disclaims all warranties either express or implied, including any implied warranty of merchantability or fitness for a particular purpose. Seller neither assumes nor authorizes any other person to assume for it any liability in connection with the sale of this item/items.

On behalf of servicing dealer, I hereby certify that the information contained hereon is accurate unless otherwise shown. Warranty services described were performed at no charge to owner. There was no indication from the appearance of the vehicle or otherwise, that any part repaired or replaced under this claim had been connected in any way with any accident, negligence or misuse. Records supporting this claim are available for (1) year from the date of payment notification at the servicing dealer for inspection by manufacturer's representative.

CUSTOMER SIGNATURE

(SIGNED) DEALER, GENERAL MANAGER OR AUTHORIZED PERSON (DATE)



2300 Northern Blvd.
 Greenvale, NY 11548
 516-621-9191
 www.easthillsjeep.com

[REDACTED]		VEHICLE IDENTIFICATION		MILEAGE OUT		DATE OUT		INVOICE NO.	
[REDACTED]		1C4RJFBG0E0 [REDACTED]		40937		10/30/14		[REDACTED]	
BEDFORD		NY [REDACTED]		YEAR		MAKE		MODEL	
[REDACTED]		[REDACTED]		14		JEEP		GR CHEROKEE	
[REDACTED]		[REDACTED]		[REDACTED]		[REDACTED]		[REDACTED]	
CUST. NO.		LICENSE		HOME PHONE		WORK PHONE		STOCK NO.	
5821650		[REDACTED]		[REDACTED]		-		GC2823	
[REDACTED]		[REDACTED]		[REDACTED]		[REDACTED]		[REDACTED]	
CUST. LABOR RATE		DELIV. DATE		DELIV. MILES		MILEAGE IN		DATE IN	
135.0		07/31/13		84		40935		10/20/14	
[REDACTED]		[REDACTED]		[REDACTED]		[REDACTED]		[REDACTED]	
[REDACTED]		[REDACTED]		[REDACTED]		[REDACTED]		[REDACTED]	

SERVICE HOURS: MON-THU 7:30 - 8:00 SAT 8:00- 5:00 FRI 7:30 - 7:00
 NYS REPAIR SHOP #R1301371
 NYS REPAIR SHOP # 1301371

LINE	OP. CODE	FAIL-CD	TECH.	HOURS/QTY	TYPE	AMOUNT
A						
Com ----- TOWED TO SHOP -----						
CUSTOMER STATES NO CRANK CONDITION AND WILL NOT START WITH BOOST						
Cau P1DCA-00.						
Cor DIAGNOSE NO CRANK CONDITION. FAULT CODE P1DCA-00 NO PARK SENSING. REPLACE ELECTRONIC SHIFTER ASSEMBLY						
ZURICH EXTENDED PLAN \$200.00 DEDUCTIBLE. CLAIM# [REDACTED] PHONE# [REDACTED]						
1-800-423-4566 FAX# 1-913-664-4100						
			D14		C	270.00
			1YY69DX9AB KNOB	GEAR	1	C 195.00
			1YY67DX9AA SHROUD	GEAR	1	C 50.00
Code	Misc Charge		Inv#/Info	Days	Hours	
	ZURICH NO TAX					
					1.0	C 33.21-
Line Total.....						481.79

B						
Com DIAGNOSTIC FEE TO VERIFY CUSTOMER'S CONCERN \$135.00 plus tax						
			DIAG		D14	
Line Total.....						

C +						
Com \$7.00 OIL AND FILTER- NEW CAR/USED CAR AWARDS PROGRAM						
			7LOF		D14	C 1.00

CUSTOMER COPY - PAGE 01

Printed: 10/30/2014 @ 16:39

STATEMENT OF DISCLAIMER
 The factory warranty constitutes all of the warranties with respect to the sale of this item/items. The Seller hereby expressly disclaims all warranties either express or implied, including any implied warranty of merchantability or fitness for a particular purpose. Seller neither assumes nor authorizes any other person to assume for it any liability in connection with the sale of this item/items.

 CUSTOMER SIGNATURE

On behalf of servicing dealer, I hereby certify that the information contained hereon is accurate unless otherwise shown. Warranty services described were performed at no charge to owner. There was no indication from the appearance of the vehicle or otherwise, that any part repaired or replaced under this claim had been connected in any way with any accident, negligence or misuse. Records supporting this claim are available for (1) year from the date of payment notification at the servicing dealer for inspection by manufacturer's representative.

 (SIGNED) DEALER, GENERAL MANAGER OR AUTHORIZED PERSON (DATE)



2300 Northern Blvd.
 Greenvale, NY 11548
 516-621-9191
 www.easthillsjeep.com

[REDACTED]		VEHICLE IDENTIFICATION		MILEAGE OUT	DATE OUT	INVOICE NO.	
[REDACTED]		1C4RJFBG0EC [REDACTED]		40937	10/30/14	[REDACTED]	
BEDFORD NY [REDACTED]		YEAR	MAKE	MODEL	COLOR	TAG NO.	
[REDACTED]		14	JEEP	GR CHEROKE	BK	00146	
CUST. NO.	LICENSE	HOME PHONE	WORK PHONE	STOCK NO.	PROD. DATE	SERV. ADV.	TERMS
5821650	[REDACTED]	[REDACTED]	- -	GC2823	00/00/00	9	CASH
CUST. LABOR RATE	DELIV. DATE	DELIV. MILES	MILEAGE IN	DATE IN	IN-SERV DATE		
135.0	07/31/13	84	40935	10/20/14	07/31/13	E6272501143000369240	

SERVICE HOURS: MON-THU 7:30 - 8:00 SAT 8:00- 5:00 FRI 7:30 - 7:00
 NYS REPAIR SHOP #R1301371
 NYS REPAIR SHOP # 1301371

LINE	OP. CODE	FAIL-CD	TECH.	HOURS/QTY	TYPE	AMOUNT
		68191349AA	FILTER	ENGIN	1 C	1.80
		68055890AA	OIL	5W20	6 C	4.20
Line Total.....						7.00

D +
 Com 23 POINT WORLD CLASS INSPECTION
 23P D14
 Line Total.....

E +
 Com CUSTOMER REQUEST CHECK BRAKES
 Cor NEEDS REAR BRAKES CUSTOMER INFORMED AND DECLINED
 D14
 Line Total.....

F +
 Com Customer states P14 BRAKE BOOSTER
 Cau CAMPAIGN
 Cor COMPLETED
 INSTALL SHIELD
 0 D14 W
 CBXNP143AA KIT BOOSTER 1 W
 Line Total.....

CUSTOMER COPY - PAGE 02

Printed: 10/30/2014 @ 16:39

STATEMENT OF DISCLAIMER
 The factory warranty constitutes all of the warranties with respect to the sale of this item/items. The Seller hereby expressly disclaims all warranties either express or implied, including any implied warranty of merchantability or fitness for a particular purpose. Seller neither assumes nor authorizes any other person to assume for it any liability in connection with the sale of this item/items.

 CUSTOMER SIGNATURE

On behalf of servicing dealer, I hereby certify that the information contained hereon is accurate unless otherwise shown. Warranty services described were performed at no charge to owner. There was no indication from the appearance of the vehicle or otherwise, that any part repaired or replaced under this claim had been connected in any way with any accident, negligence or misuse. Records supporting this claim are available for (1) year from the date of payment notification at the servicing dealer for inspection by manufacturer's representative.

 (SIGNED) DEALER, GENERAL MANAGER OR AUTHORIZED PERSON (DATE)

PE15-030

FLAT CHRYSLER

11-24-2015

ENCLOSURE 4

CAIR Backup



Document Recieved from Customer

Cair Number: [REDACTED]

Date Received: 2014-10-31 13:51:00.383014

Files Not Recieved: 0

RENTAL AGREEMENT
121984

REF#
8J42FW

DATE & TIME OUT
09/23/2014 03:17 PM
DATE & TIME IN
10/24/2014 08:08 AM

BILLING CYCLE
24-HOUR

VEH #1 2013 CHRY 200 1TOU
VIN# 1C3CCBBB8DN
LIC#
MILES DRIVEN 3131

SUMMARY OF CHARGES

Charge Description	Date	Quantity	Per	Rate	Total
TIME & DISTANCE	09/23 - 10/24	31	DAY	\$34.22	\$1,060.82
REFUELING CHARGE	09/23 - 10/24				\$0.00
Subtotal:					\$1,060.82

Taxes & Surcharges

VLF REC - VEHICLE LICENSE FEE	09/23 - 10/24	31	DAY	\$0.78	\$24.18
Total Charges:					\$1,085.00

Bill-To / Deposits

ARRIGO DODGE, INC DEALERSHIP

TIME & DISTANCE	09/23 - 10/24	31	DAY		
REFUELING CHARGE	09/23 - 10/24				
VLF REC - VEHICLE LICENSE FEE	09/23 - 10/24	31	DAY		
Subtotal:					(\$1,085.00)

Total Amount Due

\$0.00

CLAIM INFO

TYPE CAR: DURANGO
SHOP: ARRIGO DODGE, INC
DEALERSHIP
PHONE: (561) 683-1511
ATTN:

PAYMENT INFORMATION
AMOUNT PAID TYPE

CREDIT CARD NUMBER

*Arrigo Parking
& 840 to
Bal chg to cst
for reimbursement
JK*

24 days

10/17/24

PE15-030

FLAT CHRYSLER

11-24-2015

ENCLOSURE 4

CAIR Backup



**Press Brake
and
Push Button
to Start**

10081 mi





Take Price
Vehicle



to Pride

PUSH TO
RELEASE

Take Pride
in your vehicle

























































2014 JEEP GRAND CHEROKEE 3.6L V6
1C4RFBG5EC [REDACTED]

Action Items

Topology

All DTCs

All Flashes

Recalls

RRTs

There are no DTCs present for this vehicle.



Flash

DTCs

Data

Misc Functions

System Tests

Actuators

Current Part Number: 68225560AF

ECU Status: Up-to-Date

ECU	New Part Number	Calibration
TCM	68225560AF	2014 GRAND CHEROKEE 3.6L 4WD

R
N
D/S

TELOR
Coca-Cola

MAKES
IN
PLAN

68°F



S
D
N
R
P





Search



Share



Check



Mark as



2014 JEEP GRAND CHEROKEE 3.6 V6 V V T

TC4RUF8G5EQ6

Trans A/C Converter Clutch Slipping

False

PRND Status

Lever in position "P"

Paddle Shift

Switches Not Active

Transmission A/C Converter Clutch Slip Request

No

A close-up photograph of a car's gear shifter. The shifter is a dark, rounded knob with a chrome trim around the top. The letters 'P', 'R', 'N', and 'D/S' are printed vertically on the top surface and are illuminated with a bright blue light. The shifter is positioned on a light-colored, possibly leather, center console. To the right, a black cup with a red Coca-Cola logo is visible, containing a clear liquid. The background shows a portion of a person's hand and a white object, possibly a napkin or paper.

P
R
N
D/S

68°F



S D N R P



2014 JEEP GRAND CHEROKEE 3.6L V6 V.V.T.

104RUFBG5E0 [REDACTED]



Trans A/C Converter Clutch Slipping	False
PRND Status	Lever in Position "R"
Paddle Shift	Switches Not Active
Transmission A/C Converter Clutch Slip Request	Nil
Ignition in Limp Home Mode	False

P
R
N
D/S

Coca-Cola

68°F



P
R
N
D
S



2014 JEEP GRAND CHEROKEE 3.6L V6 V.V.T.

1C4RJFBG5E0 [REDACTED]

Trans A/D Converter Clutch Slipping

False

PRND Status

Lever in Position "N"

Paddle Shift

Switches Not Active

Transmission A/D Converter Clutch Slip Request

False

Trans in Limp Home Mode

False

Transmission Output Shaft Speed

3000



P
R
N
D

Coca-Cola

68°F



S
D
N
R
P




H

C

F

N



2014 JEEP GRAND CHEROKEE 3.6L V6 V.V.T.

1C4PJFBC5E0 [REDACTED]

Trans A/C Converter Clutch Slipping

False

PRND Status

Lever in position 'D'

Paddle Shift

Switches Not Active

Transmission A/C Converter Clutch Slip Request

No

Trans in Lima Home Mode

False

Trans Maximum Output Shaft Speed

0 km/h

P
R
N
D/S

Classic Coca-Cola

68°F



D S R P





2014 JEEP GRAND CHEROKEE 3.6L V6 V.V.T.

1C4RJF8G5E0 [REDACTED]

Trans A/D Converter Clutch Slipping

False

PRND Status

Lever in position "D"

Paddle Shift

Switches Not Active

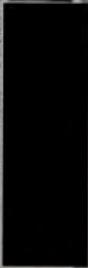
Transmission A/D Converter Clutch Slip Request

Yes

Transmission Mode

Range

00 LB
GT TIRES
SD) COLD
GT TIRES
SD) COLD



THIS VEHICLE CONFORMS TO ALL APPLICABLE U.S.A. FEDERAL MOTOR VEHICLE SAFETY STANDARDS IN EFFECT ON THE DATE OF MANUFACTURE SHOWN ABOVE.

VIN: 1CARJFBG5E2 [REDACTED] TYPE: [REDACTED] MPV
VEHICLE MADE IN U.S.A. PRINT: PSC TRIM: 0L19 MSRP: 020112 030AA

REQ BY CHRYSLER GROUP LLC

DATE OF RECEIPT: 2-14

QTY:

2949 KG 6560 LB

DATE FROM:

1452 KG

3240 LB

QTY:

7265/68818 109T TIRE

DATE FROM:

1806.8

4000 LB

QTY:

252 ON 1 36 PSI COLL

DATE FROM:

1679 KG

3720 LB

QTY:

7265/58818 109T TIRE

DATE FROM:

1806.2

4000 LB

QTY:

252 ON 1 36 PSI COLL



THIS SPECIAL CONTRACT IS FOR THE USE OF THE U.S. ARMY ONLY

STANDARD IN EFFECT ON THE DATE OF MANUFACTURE

QTY: 1042 POUNDS

REPLACE THIS IN U.S.A. PRINTING

PRINTING

37-017































U244A102101023

0244A102101023



0244A102101023





PE15-030

FLAT CHRYSLER

11-24-2015

ENCLOSURE 4

CAIR Backup





Skinner Susan (FCA)

To: CAP Void and Reissue Checks Group
Subject: RE: [REDACTED] stop pay req. ck. #1568647

From: CAP Void and Reissue Checks Group
Sent: Tuesday, March 10, 2015 9:44 AM
To: Skinner Susan (FCA); CAP Void and Reissue Checks Group
Subject: RE: [REDACTED] stop pay req. ck. #1568647

Susan,

Your request has been processed and payment will not be reissued.

Thank you,

Void & Reissue Group

From: Skinner Susan (FCA)
Sent: Friday, March 06, 2015 2:03 PM
To: CAP Void and Reissue Checks Group
Subject: [REDACTED] stop pay req. ck. #1568647

Sue Skinner
Senior Clerk
Customer Assistance Center

Document Recieved from Customer

Cair Number: [REDACTED]

Date Received: 2014-12-10 12:00:01.807255

Files Not Recieved: 0

Attn: CAM

Case #



IC FEDERAL CREDIT UNION
300 BEMIS ROAD
FITCHBURG MA 01420-7323

PAYMT. NO.	ACCOUNT NUMBER	ON TIME PAYMENT - DUE ON OR BEFORE
19	[REDACTED]	\$384.36 DEC 29 - 14
		LATE PAYMENT - PAY ON OR AFTER
		\$389.36 JAN 13 - 15

TO CONTACT US PLEASE CALL 978.343.3725

IC FEDERAL CREDIT UNION
300 BEMIS ROAD
FITCHBURG MA 01420-7323



PLEASE BE SURE TO CHECK THE BANK
CONDITION WITH YOUR PAYMENT

PE15-030

FLAT CHRYSLER

11-24-2015

ENCLOSURE 4

CAIR Backup



Document Recieved from Customer

Cair Number: [REDACTED]

Date Received: 2015-03-12 18:24:16.386668

Files Not Recieved: 0

PURCHASE ORDER CUST. NO.: 128675		DATE 01/28/2014	SALES PERSON GARDNER, MICHAEL
DEAL: 128675	BUYER [REDACTED]		PERMIT # [REDACTED] D.O.B. [REDACTED]
	BUYER [REDACTED]		PERMIT # [REDACTED] D.O.B. [REDACTED]
Aberdeen, MD	ADDRESS [REDACTED]		CITY, STATE, ZIP PIKESVILLE MD [REDACTED]
<input type="checkbox"/> RADIO <input type="checkbox"/> NEWSPAPER <input type="checkbox"/> REFERRAL <input type="checkbox"/> OTHER	SOC. SEC # [REDACTED]		SOC. SEC # [REDACTED]
YEAR 2014	MAKE JEEP	MODEL GRAND CH	INSURANCE INFORMATION
BXT. COLOR BLACK	INT. COLOR	STOCK # [REDACTED]	INSURANCE COMPANY ACE INS CO
NEW XX USED	DEMO	MILEAGE 128	NAME OF AGENT SCHOENEFIELD AGCY
SERIAL NUMBER C14R0JF0T2E [REDACTED]	AGENT ADDRESS		AGENT PHONE 4106022000
DATE TO BE DELIVERED	POLICY NUMBER [REDACTED]		EFFECTIVE DATE
BASE PRICE OF VEHICLE	54279.81		VERIFIED BY [REDACTED] SPOKE TO WHOM
DESTINATION CHARGE	N/A		TRADE INFORMATION
OPTIONAL EQUIPMENT	YEAR 07	MAKE JEEP	MODEL GRAND CHEROKEE
	SERIAL NUMBER 1J8HR692770 [REDACTED]	MILES: 123643	
	COLOR BLACK	TAG NUMBER	STICKER NUMBER
	PAYOFF TO		
	ADDRESS		
	ACCT. #	PAYOFF GOOD TO	
TERMS OF SALE			
No verbal commitments for repairs or equipment will be honored. All special conditions of this sale are in writing.			
The warranty on this vehicle is set forth in the Warranty Facts Book that is either in the glove compartment or will be given to you on delivery. It is designated a LIMITED WARRANTY and complies with the provisions of the Magnuson-Moss Warranty Federal Trade Commission Improvement Act. (Public Law 93-637). We call to your particular attention, in compliance with the Act, that there is:			
NO OTHER EXPRESS WARRANTY ON THIS VEHICLE NOR ANY OTHER EXPRESS WARRANTY MADE BY THE DEALER FOR LOSS OF USE OF THE VEHICLE, LOSS OF TIME, INCONVENIENCE, COMMERCIAL LOSS, OR CONSEQUENTIAL DAMAGES, AND ANY IMPLIED WARRANTY OR THE FITNESS OF THIS VEHICLE FOR THE USE OF WHICH IT IS INTENDED IS LIMITED BY THE QUALIFICATIONS IN THE WARRANTY FACTS BOOKLET.			
As a material part of this purchase, the Purchaser represents to ADAMS JEEP OF MARYLAND, INC. that the information set forth above regarding the used car trade-in (or other property used as a trade) is true and correct and that there are no liens or encumbrances other than those as shown above. It is expressly understood and agreed to by and between the parties hereto and this is an offer to purchase by the Purchaser, and is not an offer to sell by ADAMS JEEP OF MARYLAND, INC. and further, that this offer to purchase does not become binding contract on the parties hereto until accepted in writing by an authorized officer of ADAMS JEEP OF MARYLAND, INC.			
If credit is to be extended in connection with this sale, disclosure of terms is made by separate document which becomes part of this transaction. If full, complete and satisfactory disclosure of credit terms is not made prior to delivery buyer may cancel order and recover deposit if applicable.			
IF PURCHASING A USED CAR "THE INFORMATION YOU SEE ON THE WINDOW FORM FOR THIS VEHICLE IS PART OF THIS CONTRACT. INFORMATION ON THE WINDOW FORM OVERRIDES ANY CONTRARY PROVISIONS IN THE CONTRACT OF SALE"			
Purchaser X _____			
ELECTRONIC REG FEE	20.00		ACCEPTED BY [REDACTED]
MO STATE TIRE RECYCLING FEE	4.00		
DEALER INSTALLED EQUIPMENT			ADDITIONAL INFORMATION REGARDING THE TERMS OF SALE MAY BE FOUND ON THE REVERSE SIDE OF THIS CONTRACT. BY SIGNING THIS ORDER I ACKNOWLEDGE THAT I HAVE READ BOTH SIDES OF THIS FORM AND UNDERSTAND THE TERMS OF THIS SALE
RUST PROOF <input type="checkbox"/> no <input type="checkbox"/> yes	UNDERCOAT <input type="checkbox"/> no <input type="checkbox"/> yes		
PAINT SEALANT <input type="checkbox"/> no <input type="checkbox"/> yes	FABRIC PROTECTION <input type="checkbox"/> no <input type="checkbox"/> yes		Purchaser X _____ /Date 01/28/2014
DEALER PROCESSING CHARGE (not required by law)	200.00		Purchaser X _____ /Date _____
CASH SELLING PRICE	54503.81		
TAX	2968.79		
LICENSE 90.00	REG. & TITLE 130.00	220.00	
TOTAL CASH DELIVERED PRICE		57692.60	
TRADE	5000.00		
PAYOFF	N/A		
NET TRADE	5000.00		
DEPOSIT	N/A		
REBATE	500.00		
TOTAL DOWN PAYMENT	5500.00		
BALANCE DUE	52192.60		
EXTENDED SERVICE PLAN / GAP	2387.00		
TOTAL BALANCE DUE OR AMT TO FINANCE	54579.60		

Attn: MM 2852

Case#