

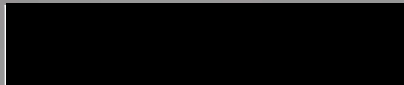
**INFORMATION Redacted PURSUANT TO THE FREEDOM OF
INFORMATION ACT (FOIA), 5 U.S.C. 552(B)(6)**





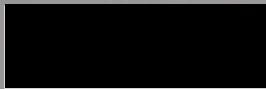
Inspection Photographs

Project Name:



CGLLC

Project Number:



Date:

February 12, 2013

017 - Chrysler - 04314

Notes:

Subject Vehicle Inspection

Location:

Griffin's Hub Chrysler Jeep
Milwaukee, WI



017 - Chrysler - 04315



017 - Chrysler - 04316



017 - Chrysler - 04317



017 - Chrysler - 04318



017 - Chrysler - 04319



017 - Chrysler - 04320



017 - Chrysler - 04321



017 - Chrysler - 04322



017 - Chrysler - 04323



017 - Chrysler - 04324



017 - Chrysler - 04325



017 - Chrysler - 04326



017 - Chrysler - 04327



017 - Chrysler - 04328



017 - Chrysler - 04329



017 - Chrysler - 04330

017 - Chrysler - 04331





017 - Chrysler - 04332



017 - Chrysler - 04333



017 - Chrysler - 04334



017 - Chrysler - 04335



017 - Chrysler - 04336



017 - Chrysler - 04337



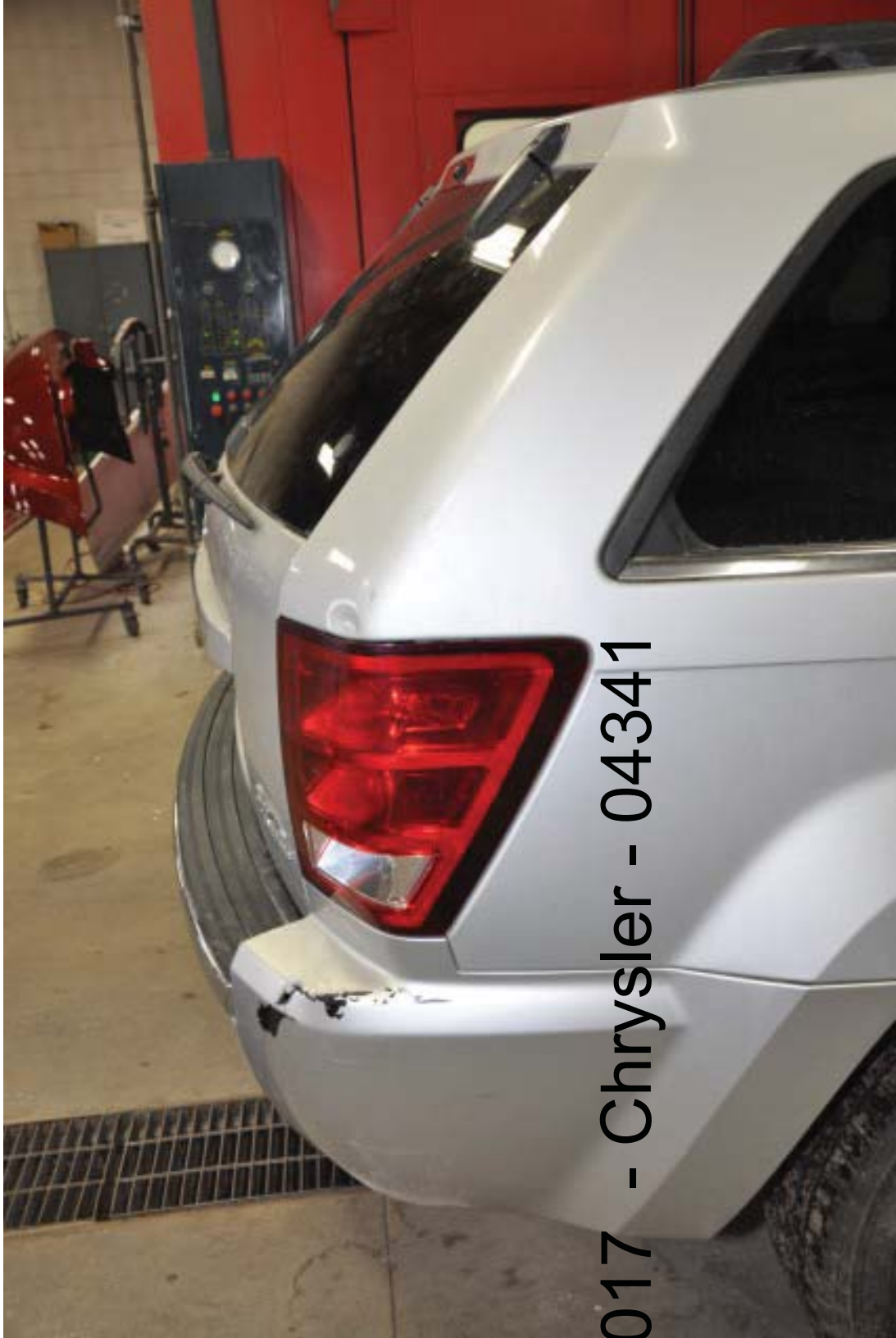
017 - Chrysler - 04338

A close-up photograph of a white car body panel, likely a door or fender, showing significant damage. A large, jagged tear has occurred, exposing the underlying metal and dark interior components. The tear runs diagonally across the panel. The surrounding paint is cracked and chipped. In the upper left corner, a small portion of a red LED display is visible. The text '017 - Chrysler - 04339' is overlaid on the lower-left portion of the image.

017 - Chrysler - 04339



017 - Chrysler - 04340



017 - Chrysler - 04341



017 - Chrysler - 04342



017 - Chrysler - 04343



017 - Chrysler - 04344



017 - Chrysler - 04345



017 - Chrysler - 04346



017 - Chrysler - 04347



017 - Chrysler - 04348



017 - Chrysler - 04349



017 - Chrysler - 04350



017 - Chrysler - 04351



017 - Chrysler - 04352



017 - Chrysler - 04353



017 - Chrysler - 04354



017 - Chrysler - 04355

017 - Chrysler - 04356



017 - Chrysler - 04357



017 - Chrysler - 04358





017 - Chrysler - 04359



017 - Chrysler - 04360



017 - Chrysler - 04361



017 - Chrysler - 04362



017 - Chrysler - 04363



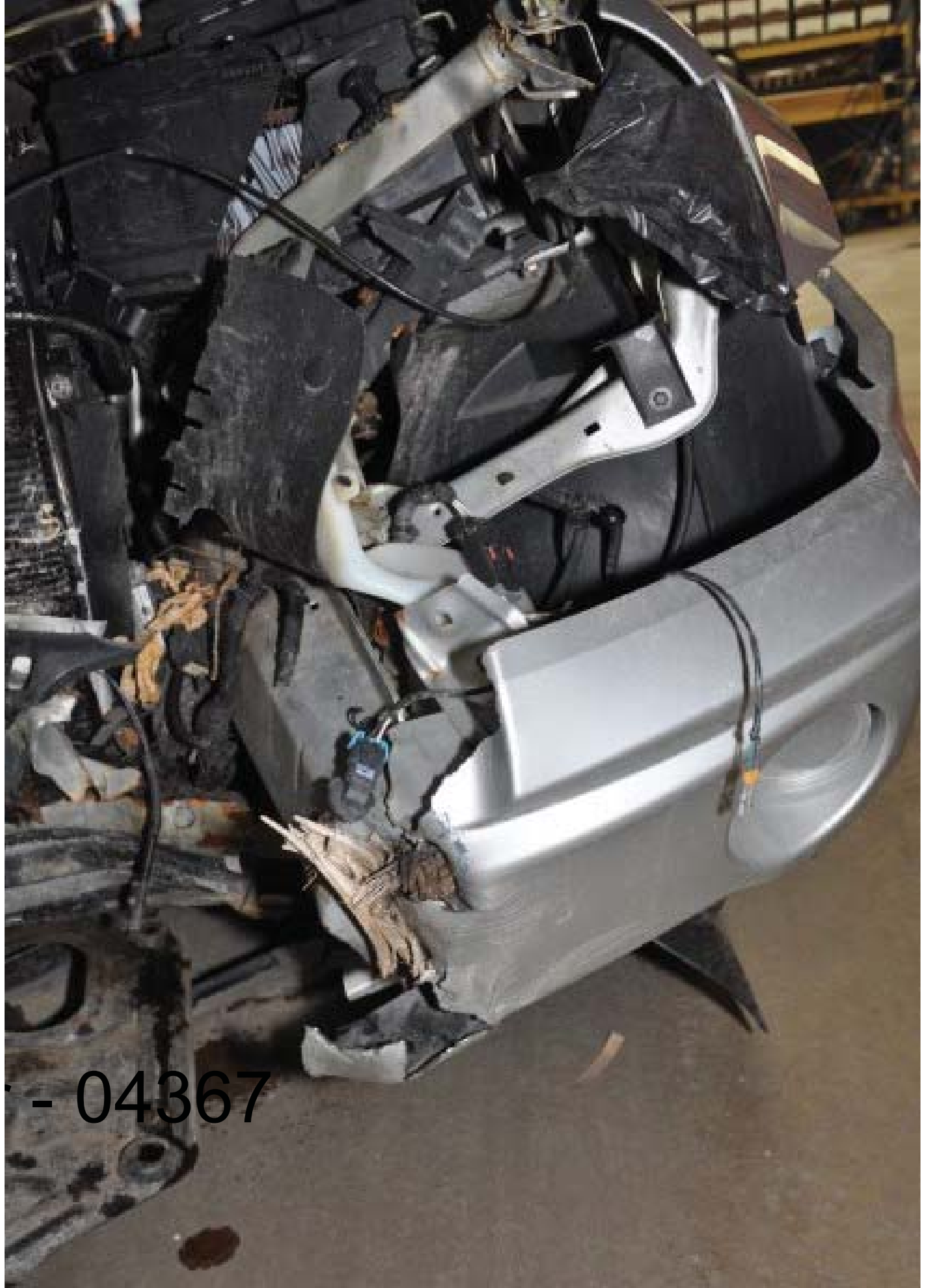
017 - Chrysler - 04364



017 - Chrysler - 04365



017 - Chrysler - 04366



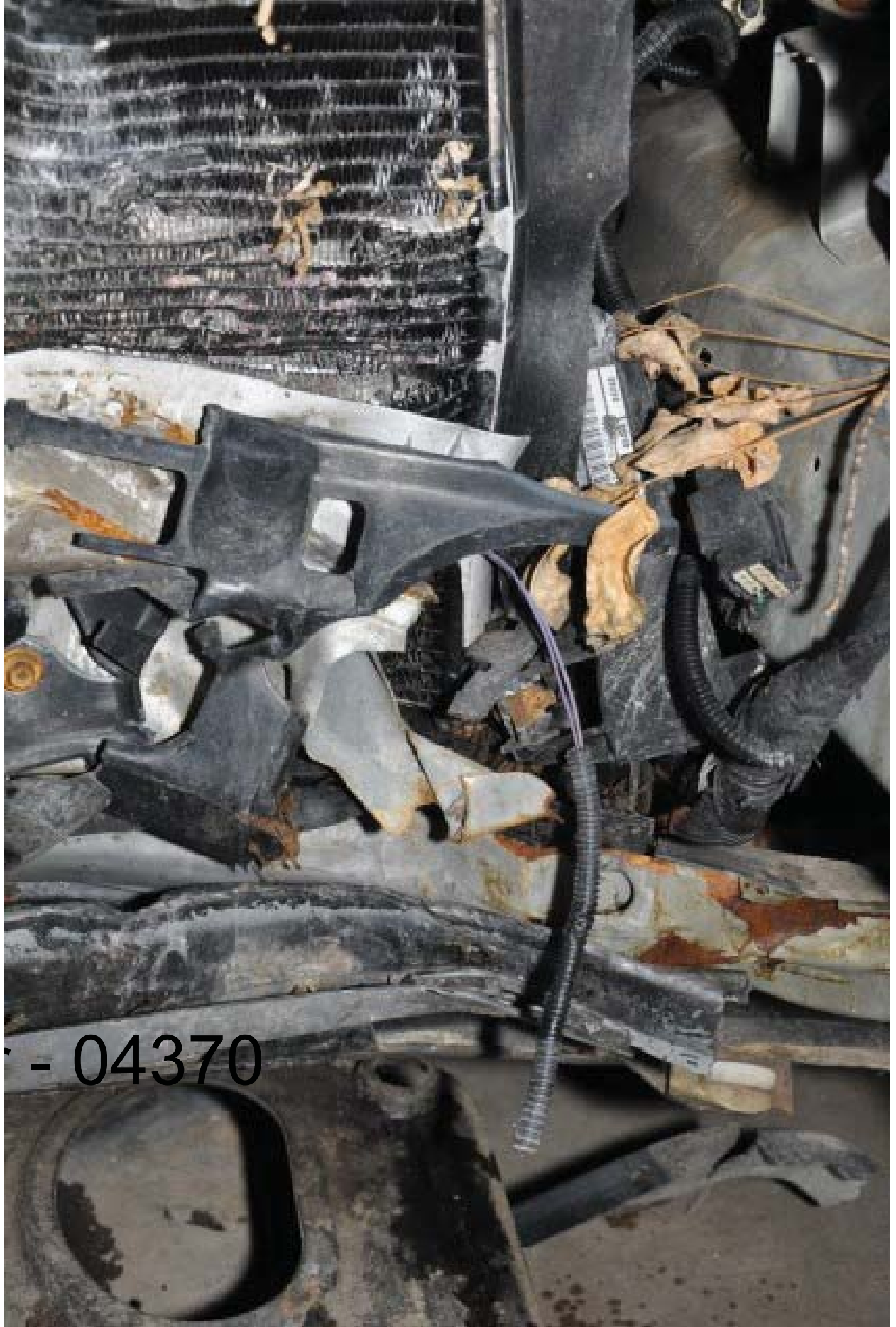
- 04367



017 - Chrysler - 04368



017 - Chrysler - 04369



- 04370



- 04371



- 04372



017 - Chrysler - 04373

55116 928AA
83403 3434B



017 - Chrysler - 04374

1J8HR58205C

017 - Chrysler - 04375

MFD BY DAIMLERCHRYSLER CORPORATION
 DATE OF MFR: 12-04
 GVWR FRONT: 1330 KG 2950 LB
 GVWR REAR: 1452 KG 3200 LB
 CURB WT: 2700 KG 6150 LB
 AIR: P235/65R17 T1RES
 RIMS AT 228 MM | 33 PSI COLD
 AIR: P235/65R17 T1RES
 RIMS AT 228 MM | 33 PSI COLD
 THIS VEHICLE CONFORMS TO ALL APPLICABLE FEDERAL MOTOR VEHICLE SAFETY AND TRAFFIC PREVENTION STANDARDS IN EFFECT ON THE DATE OF MANUFACTURE SHOWN ABOVE.
 VIN: 1J8HRSB28S [REDACTED] TYPE: MPV
 VEHICLE MADE IN U.S. [REDACTED] INT: P30 TRK: PLJ1 40-01040
 NHTSA 121822 85748

017 - Chrysler - 04376



017 - Chrysler - 04377



017 - Chrysler - 04378

017 - Chrysler - 04379





017 - Chrysler - 04380



017 - Chrysler - 04381



017 - Chrysler - 04382

017 - Chrysler - 04383





017 - Chrysler - 04384



017 - Chrysler - 04385



017 - Chrysler - 04386



017 - Chrysler - 04387



017 - Chrysler - 04388

017 - Chrysler - 04389





017 - Chrysler - 04390



017 - Chrysler - 04391



017 - Chrysler - 04392




017 - Chrysler - 04393



017 - Chrysler - 04394



017 - Chrysler - 04395

A close-up photograph of a metal door hinge assembly. The image shows a metal plate with a circular hole, a hinge pin, and a metal door edge. The metal is dark and appears to be made of steel or a similar alloy. The hinge is mounted on a door, and the door edge is visible on the right side of the image. The background is dark and textured, possibly the interior of the door or a wall.

017 - Chrysler - 04396



017 - Chrysler - 04397



017 - Chrysler - 04398



017 - Chrysler - 04399

017 - Chrysler - 04400



017 - Chrysler - 04401



017 - Chrysler - 04402





017 - Chrysler - 04404



017 - Chrysler - 04405



017 - Chrysler - 04406



017 - Chrysler - 04407



017 - Chrysler - 04408



017 - Chrysler - 04409



017 - Chrysler - 04410



017 - Chrysler - 04411



017 - Chrysler - 04412



017 - Chrysler - 04413



017 - Chrysler - 04414



017 - Chrysler - 04415



017 - Chrysler - 04416



017 - Chrysler - 04417



017 - Chrysler - 04418



017 - Chrysler - 04419



017 - Chrysler - 04420



017 - Chrysler - 04421



017 - Chrysler - 04422



017 - Chrysler - 04423



017 - Chrysler - 04424



017 - Chrysler - 04425



017 - Chrysler - 04426



017 - Chrysler - 04427



017 - Chrysler - 04428



017 - Chrysler - 04429

The image shows the interior of a car, specifically a storage compartment. The compartment is open, revealing a piece of crumpled white paper inside. The surrounding car interior is dark, and a portion of a grey air vent is visible on the left side. The text "017 - Chrysler - 04430" is overlaid on the image in a black, sans-serif font.

017 - Chrysler - 04430



017 - Chrysler - 04431



017 - Chrysler - 04482



017 - Chrysler - 04433



017 - Chrysler - 04434

017 - Chrysler - 04435





017 - Chrysler - 04436



017 - Chrysler - 04437



017 - Chrysler - 04438

017 - Chrysler - 04439



A close-up photograph of a mechanical assembly. A dark, cylindrical component is mounted on a light-colored, textured surface. A bolt and nut are visible, securing the assembly. The background is dark and out of focus.

017 - Chrysler - 04440

A photograph showing the undercarriage of a vehicle, likely a truck or heavy-duty car, with various wires and mechanical components. The ground is dark and appears to be asphalt or concrete. There is some debris on the ground, including a small black ring and some yellowish material. The text "017 - Chrysler - 04441" is overlaid on the bottom left of the image.

017 - Chrysler - 04441

A photograph showing the interior floor area of a vehicle. A black floor mat is severely damaged, with a large section missing and the underlying carpet exposed. A black plastic trim piece is also broken and lying on the floor. A bundle of black wires is visible, some of which are secured with a yellow zip tie. The scene is dimly lit, with a small yellow light source visible in the background. The text '017 - Chrysler - 04442' is overlaid on the bottom left of the image.

017 - Chrysler - 04442



017 - Chrysler - 04443



017 - Chrysler - 04444



017 - Chrysler - 04445



017 - Chrysler - 04446



017 - Chrysler - 04447



017 - Chrysler - 04448



017 - Chrysler - 04449



017 - Chrysler - 04450



017 - Chrysler - 04451



017 - Chrysler - 04452



017 - Chrysler - 04453



017 - Chrysler - 04454

017 - Chrysler - 04455





017 - Chrysler - 04456



017 - Chrysler - 04457



017 - Chrysler - 04458



017 - Chrysler - 04459

The image shows the interior of a vehicle, specifically the front passenger area. A light-colored, possibly grey or beige, center console is the central focus. It has a textured top surface and two rectangular air vents with horizontal slats on its front face. To the left, the side of a front passenger seat is visible, featuring a light-colored fabric or leather-like material. A white plastic door sill trim piece is located between the seat and the center console. In the background, the top of the driver's seat and a portion of the dashboard area are visible. The overall lighting is somewhat dim, suggesting an indoor or shaded environment.


017 - Chrysler - 04460



017 - Chrysler - 04461

017 - Chrysler - 04462



A close-up photograph of a white electrical cable plugged into a wall outlet. The cable has a ribbed section near the plug and a red-colored end. The outlet is set into a light-colored wall. The text '017 - Chrysler - 04463' is overlaid on the bottom left of the image.

017 - Chrysler - 04463

017 - Chrysler - 04464





017 - Chrysler - 04465

017 - Chrysler - 04466



017 - Chrysler - 04467







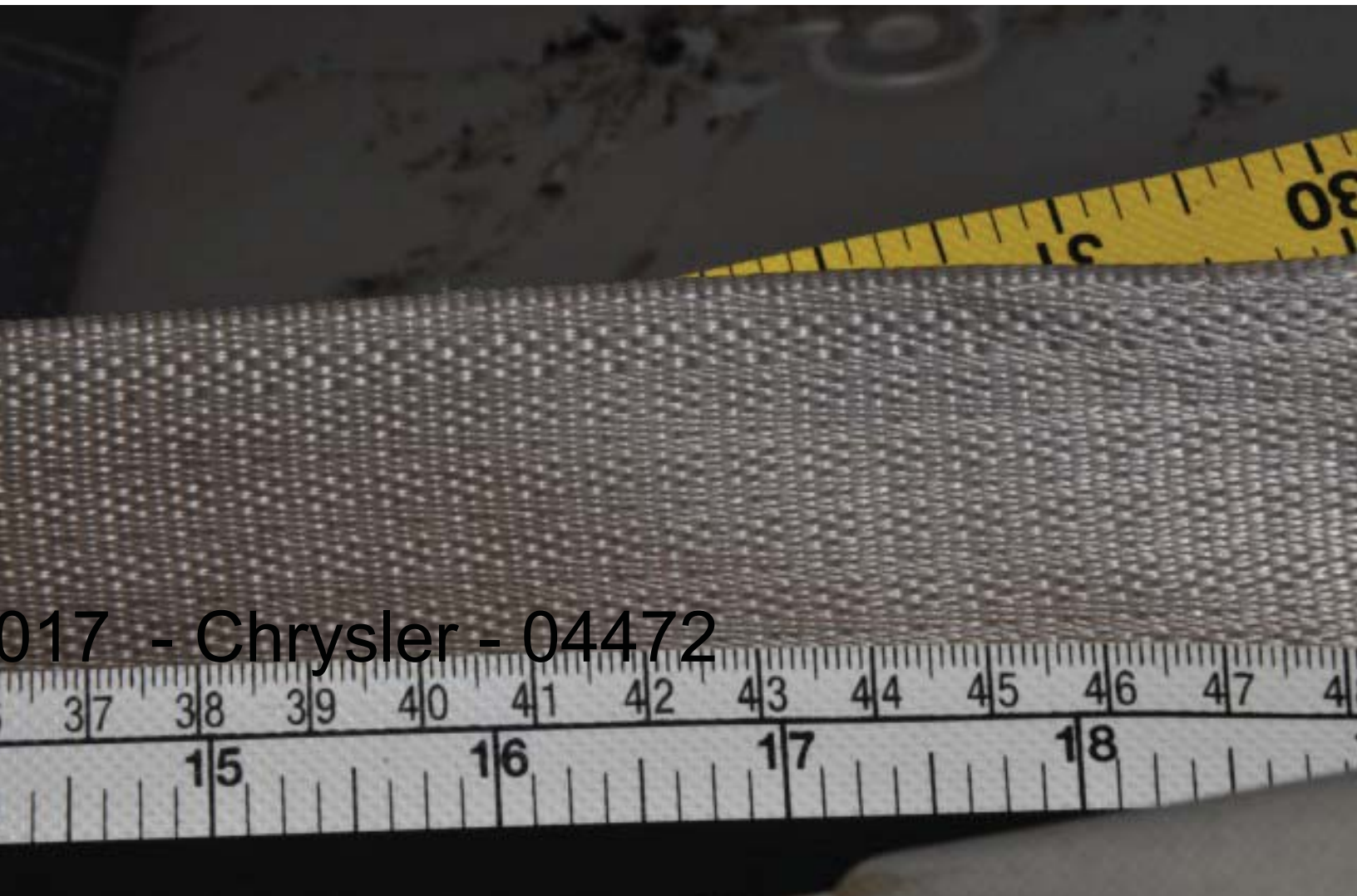
017 - Chrysler - 04469

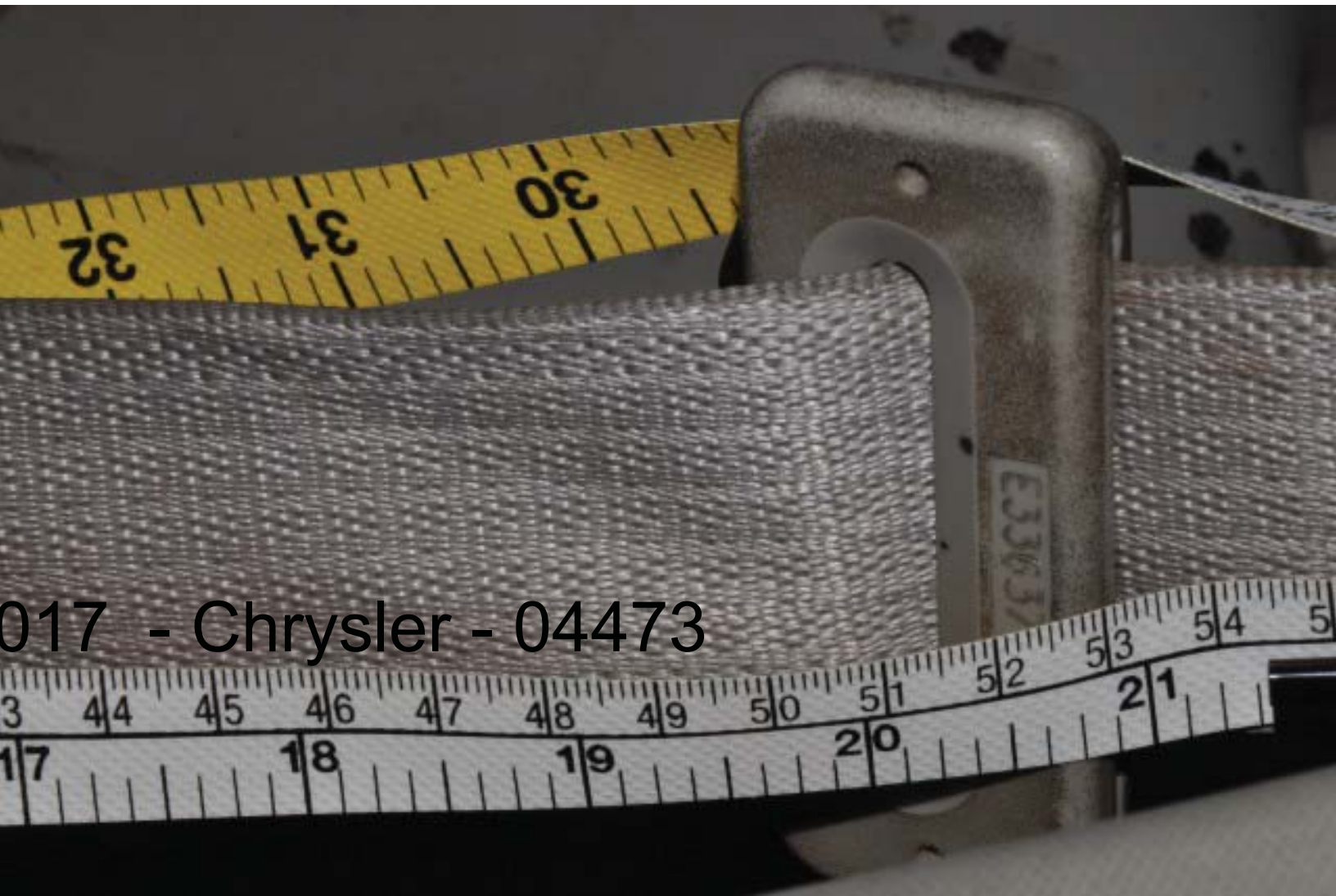
017 - Chrysler - 04470



017 - Chrysler - 04471

017 - Chrysler - 04472





017 - Chrysler - 04473



Chrysler - 04474

017 - Chrysler - 04475



017 - Chrysler - 04476





017 - Chrysler - 04477



017 - Chrysler - 04478



017 - Chrysler - 04479



017 - Chrysler - 04480

A photograph showing a close-up of a brown, textured fabric sample. A white ruler is placed horizontally across the fabric, with two metal binder rings clamped to it on the right side. The ruler has markings in centimeters, with numbers 41 through 49 visible. The fabric has a fine, woven texture. The background is dark and out of focus.

017 - Chrysler - 04481

A photograph showing a close-up of a brown, textured fabric, possibly a car seat or interior panel. A white ruler is placed horizontally across the fabric, showing measurements in centimeters. The ruler is marked from 118 to 136. The fabric has a fine, woven pattern. The background is dark and out of focus.

017 - Chrysler - 04482



017 - Chrysler - 04483



017 - Chrysler - 04484

017 - Chrysler - 04485



017 - Chrysler - 04486





017 - Chrysler - 04488





017 - Chrysler - 04489

017 - Chrysler - 04490



017 - Chrysler - 04491



017 - Chrysler - 04492

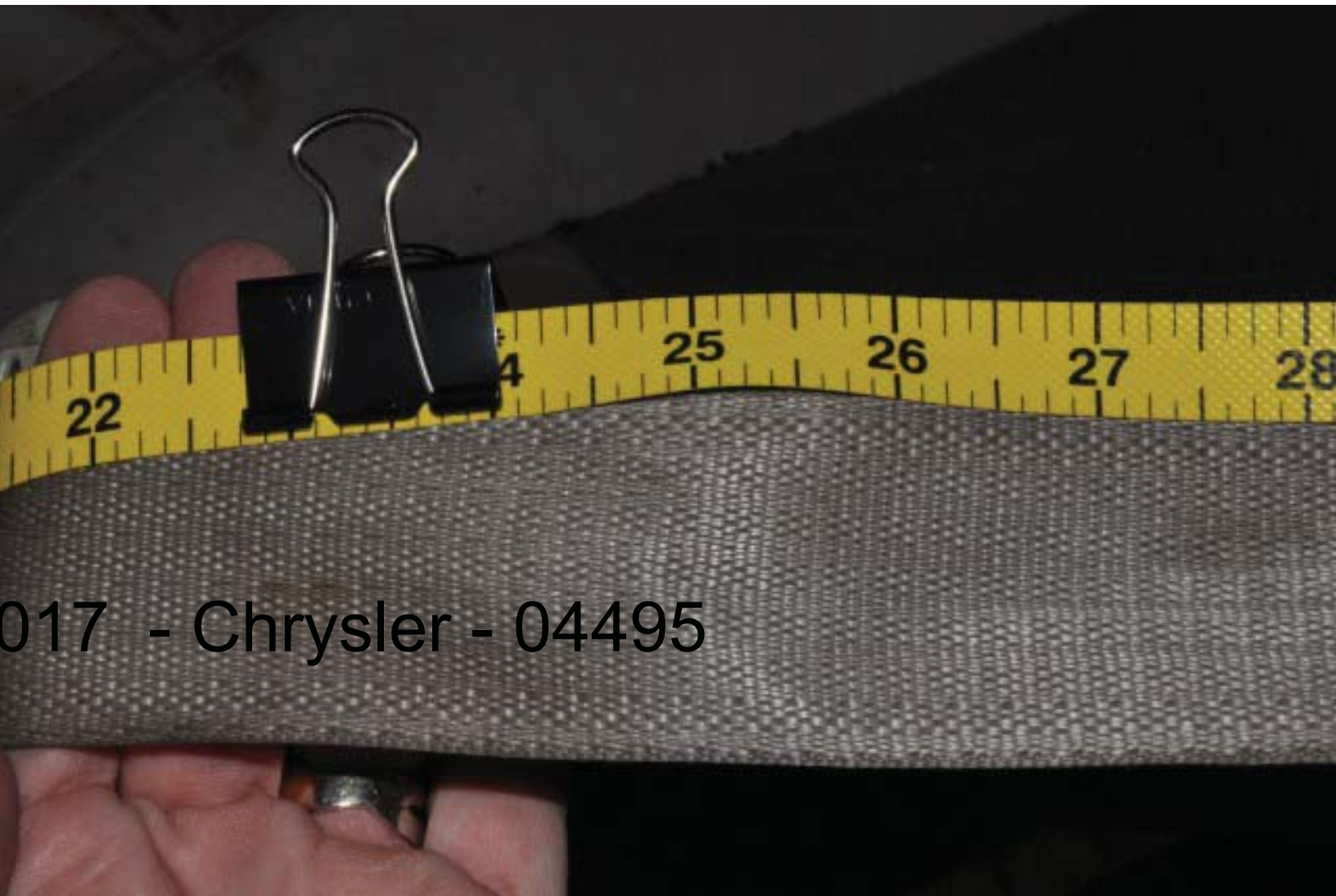




017 - Chrysler - 04493



017 - Chrysler 04494



017 - Chrysler - 04495



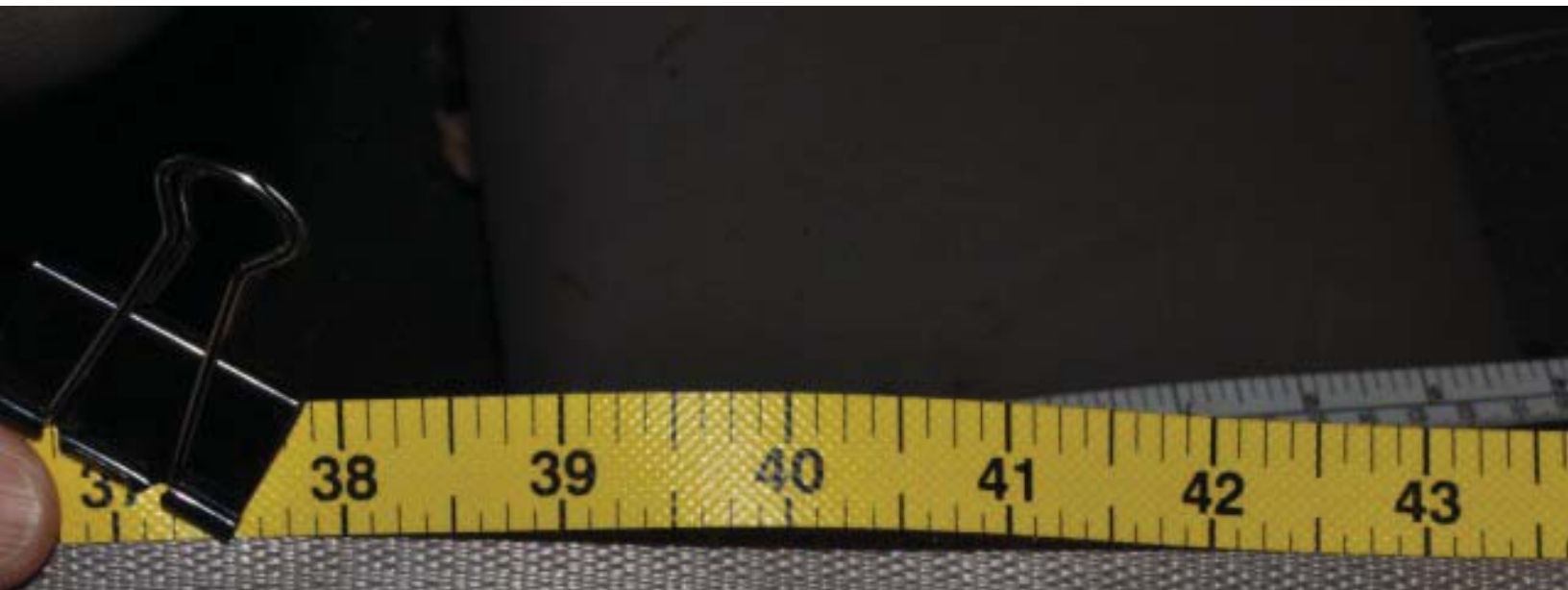
017 - Chrysler - 04496



017 - Chrysler - 04497



017 - Chrysler - 04498



017 - Chrysler - 04499



017 - Chrysler - 04500



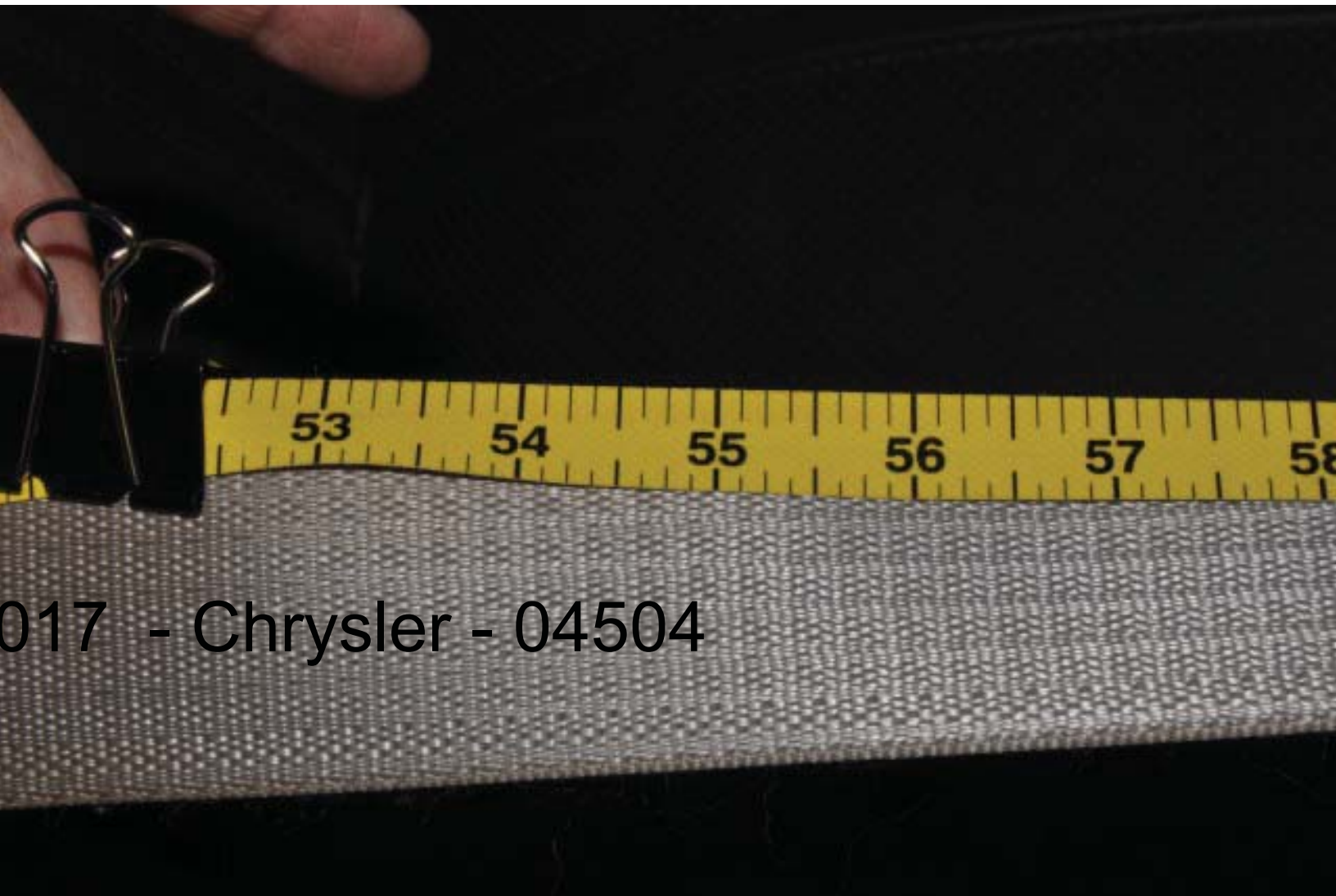
017 - Chrysler - 04501



017 - Chrysler - 04502



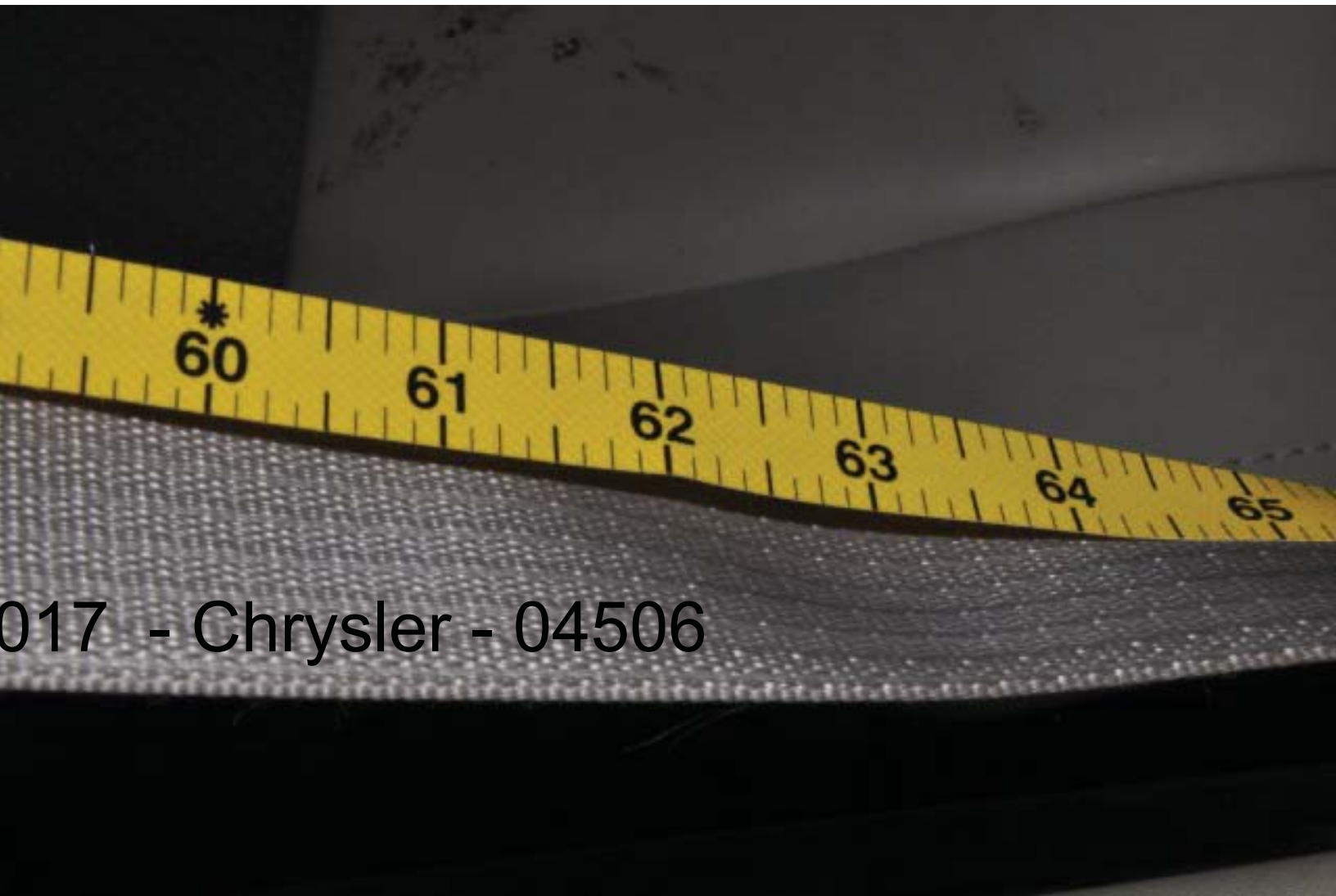
017 - Chrysler - 04503



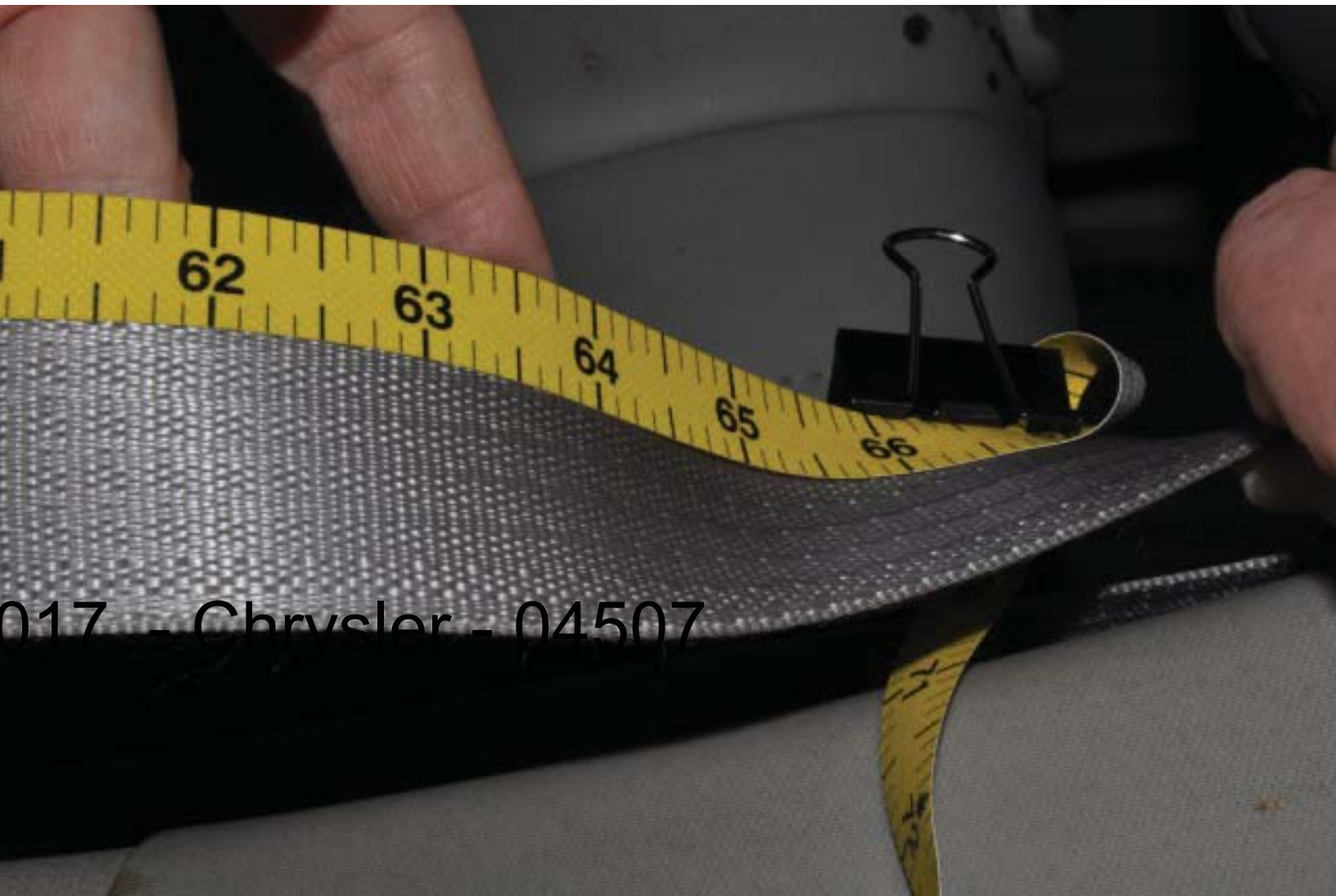
017 - Chrysler - 04504



017 - Chrysler - 04505



017 - Chrysler - 04506



017 - Chrysler - 04507



- Chrysler - 04508



017 - Chrysler - 04509

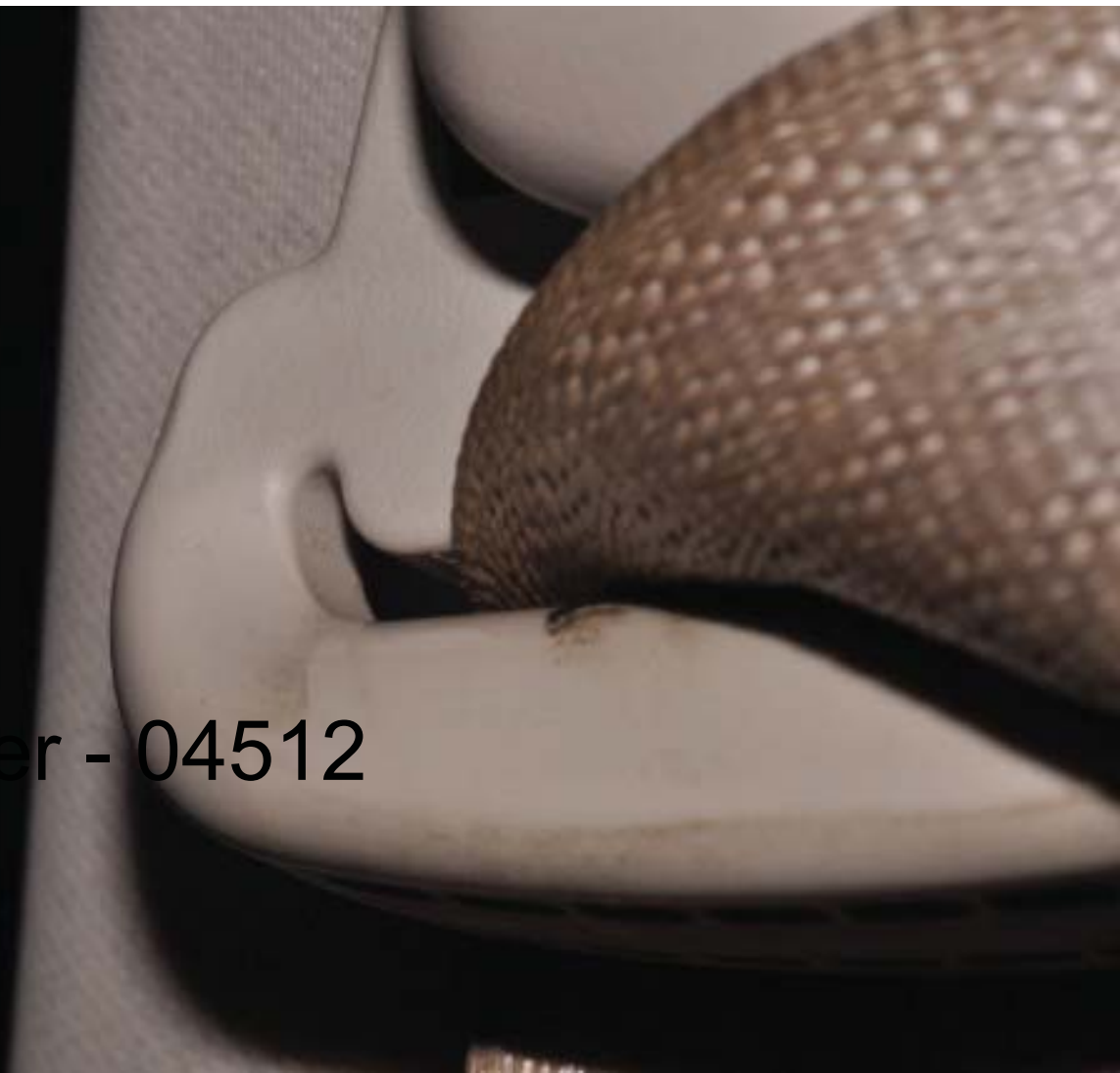


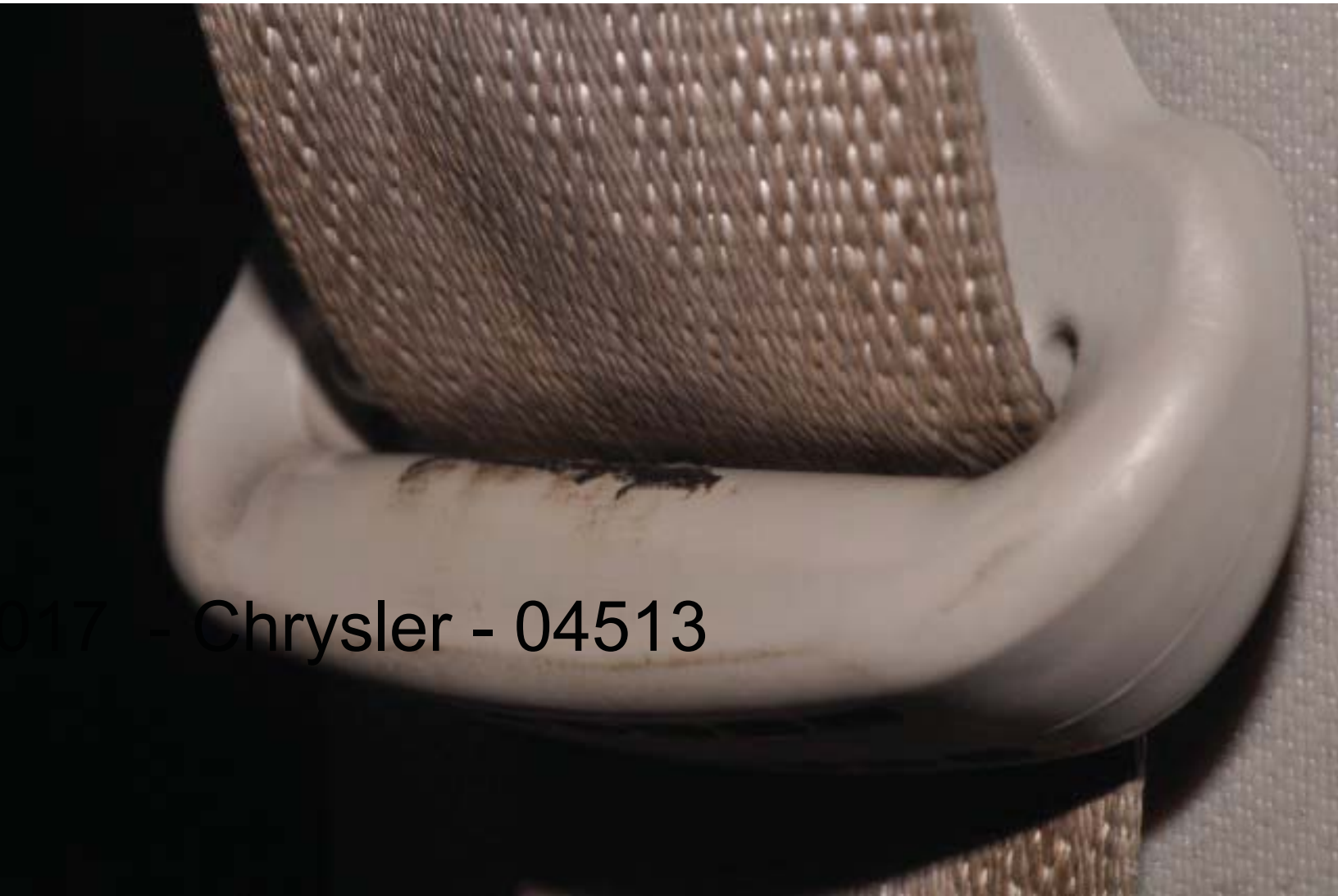
017 - Chrysler - 04510



017 - Chrysler - 04511

017 - Chrysler - 04512





17 - Chrysler - 04513

017 - Chrysler - 04514





017 - Chrysler - 04515

A close-up photograph of a car seat's interior. The central focus is a white plastic trim piece with a series of oval-shaped perforations along its length. This trim piece is positioned between two sections of a brown, textured mesh fabric. A person's finger is visible on the left side, pulling the mesh fabric away from the trim piece to reveal the underlying structure. The background is dark and out of focus.

017 - Chrysler - 04516

A close-up photograph of a car seat's side panel. The seat is upholstered in a brown fabric with a fine, repeating pattern of small white dots. A light-colored, possibly beige or off-white, plastic trim piece is visible, featuring a series of vertical oval-shaped perforations. The trim piece is positioned vertically, partially overlapping the seat's fabric. The background is dark and out of focus.

017 - Chrysler - 04517



017 - Chrysler - 04518



017 - Chrysler - 04519

A close-up photograph showing a hand holding a grey plastic tool with a serrated edge against a dark, textured fabric. The tool has two rows of small, triangular-shaped protrusions. A thin, light-colored cord is visible, passing through the fabric and being held by the hand. The background is a dark, textured surface.

017 - Chrysler - 04520



017 - Chrysler - 04521

A close-up photograph of a car's interior door panel. The panel is covered in a grey, textured material that resembles leather or vinyl. There is a significant tear in the material, where a section has been pulled away, revealing a dark, possibly black, inner layer. The tear is located in the lower-middle part of the frame. Below the tear, there are some faint, yellowish-orange stains on the surface. The lighting is somewhat dim, highlighting the texture and the damage.

017 - Chrysler - 04522



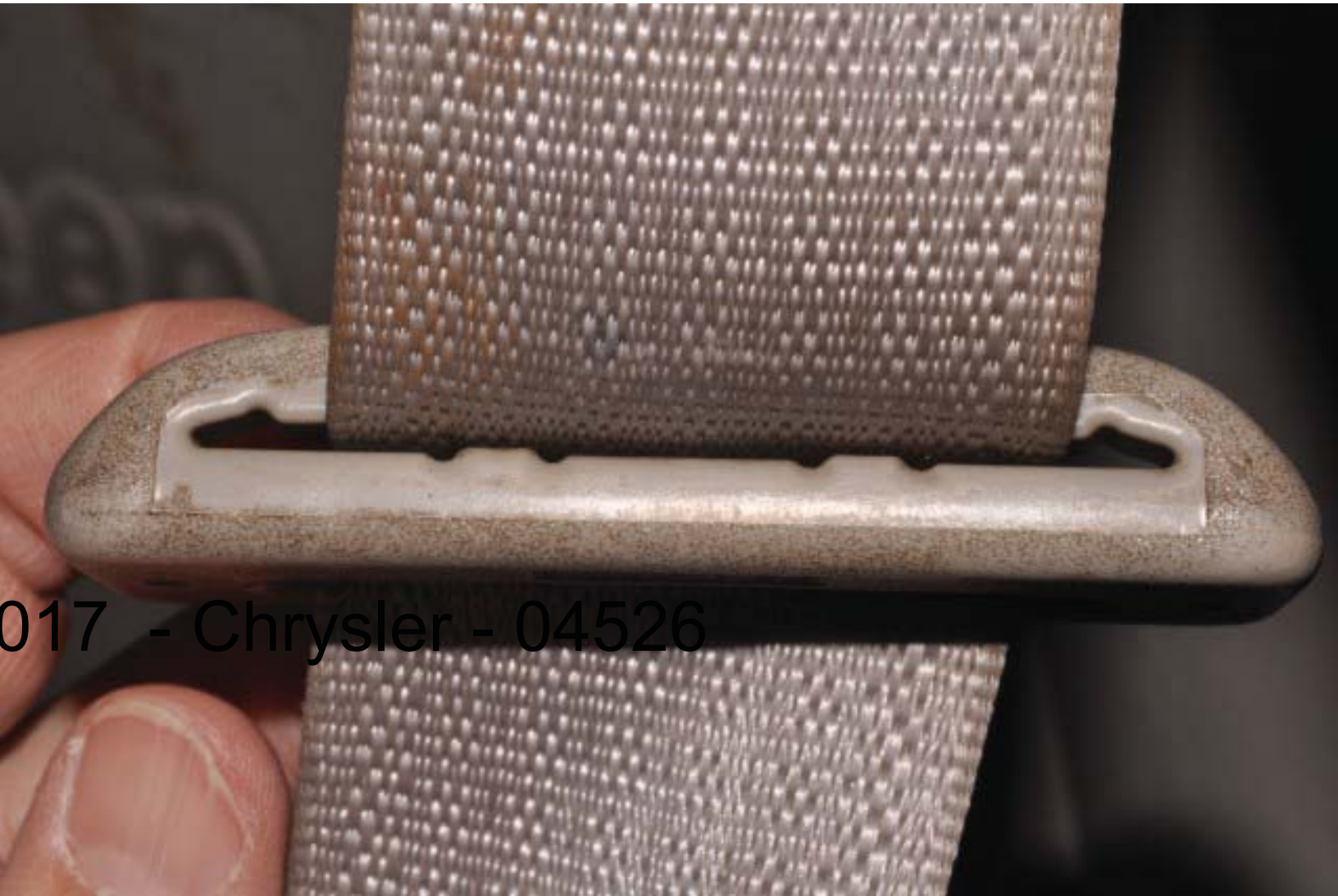
017 - Chrysler - 04523

A close-up photograph of a car seat's interior. The image shows a section of the seat's fabric, which is a light beige or tan color with a fine, woven texture. The fabric is gathered and folded, creating deep shadows and highlights that emphasize its texture. Several horizontal rows of stitching are visible, with the thread matching the fabric's color. The stitching appears to be a simple, functional seam. The overall lighting is soft and even, highlighting the material's grain and the precision of the stitching.

017 - Chrysler - 04524

017 - Chrysler - 04525





017 - Chrysler - 04526



017 - Chrysler - 04527



017 - Chrysler - 04528

017 - Chrysler - 04529





017 - Chrysler - 04530



017 - Chrysler - 04531



017 - Chrysler - 04532



017 - Chrysler - 04533



017 - Chrysler - 04534



017 - Chrysler - 04535

017 - Chrysler - 04536



017 - Chrysler - 04537



017 - Chrysler - 04538



017 - Chrysler - 04539



017 - Chrysler - 04540



017 - Chrysler - 04541





017 - Chrysler - 04542

017 - Chrysler - 04543




017 - Chrysler - 04544



A close-up photograph of a car's interior floor area. On the left, a grey fabric seat is visible. To its right, a dark, possibly black, component is partially visible, which appears to be a floor mat or a part of the vehicle's underbody structure. A copper-colored fastener or bolt is visible on this component. The floor is covered in a dark, textured carpet. The text "017 - Chrysler - 04545" is overlaid on the bottom left of the image.

017 - Chrysler - 04545

A close-up photograph of a light-colored, possibly grey or beige, car seat and floor mat. The seat is on the left, and the floor mat is on the right. The floor mat has a dark, textured surface. The text "017 - Chrysler - 04546" is overlaid on the lower left portion of the image.

017 - Chrysler - 04546

A close-up photograph of a car's interior. On the left is a grey fabric seat with a ribbed texture. To the right is a dark grey carpeted floor mat. A dark, irregular stain is visible on the floor mat, with a small metal fastener or screw head protruding from it. The text '017 - Chrysler - 04547' is overlaid in the lower-left area of the image.

017 - Chrysler - 04547

Two rusty screws are lying on a dark grey carpet. The screw on the left is a standard Phillips screw with a hexagonal head. The screw on the right is a Torx screw with a star-shaped head. Both screws are heavily oxidized and appear brownish-orange.

017 - Chrysler - 04548



017 - Chrysler - 04549



017 - Chrysler - 04550



017 - Chrysler - 04551



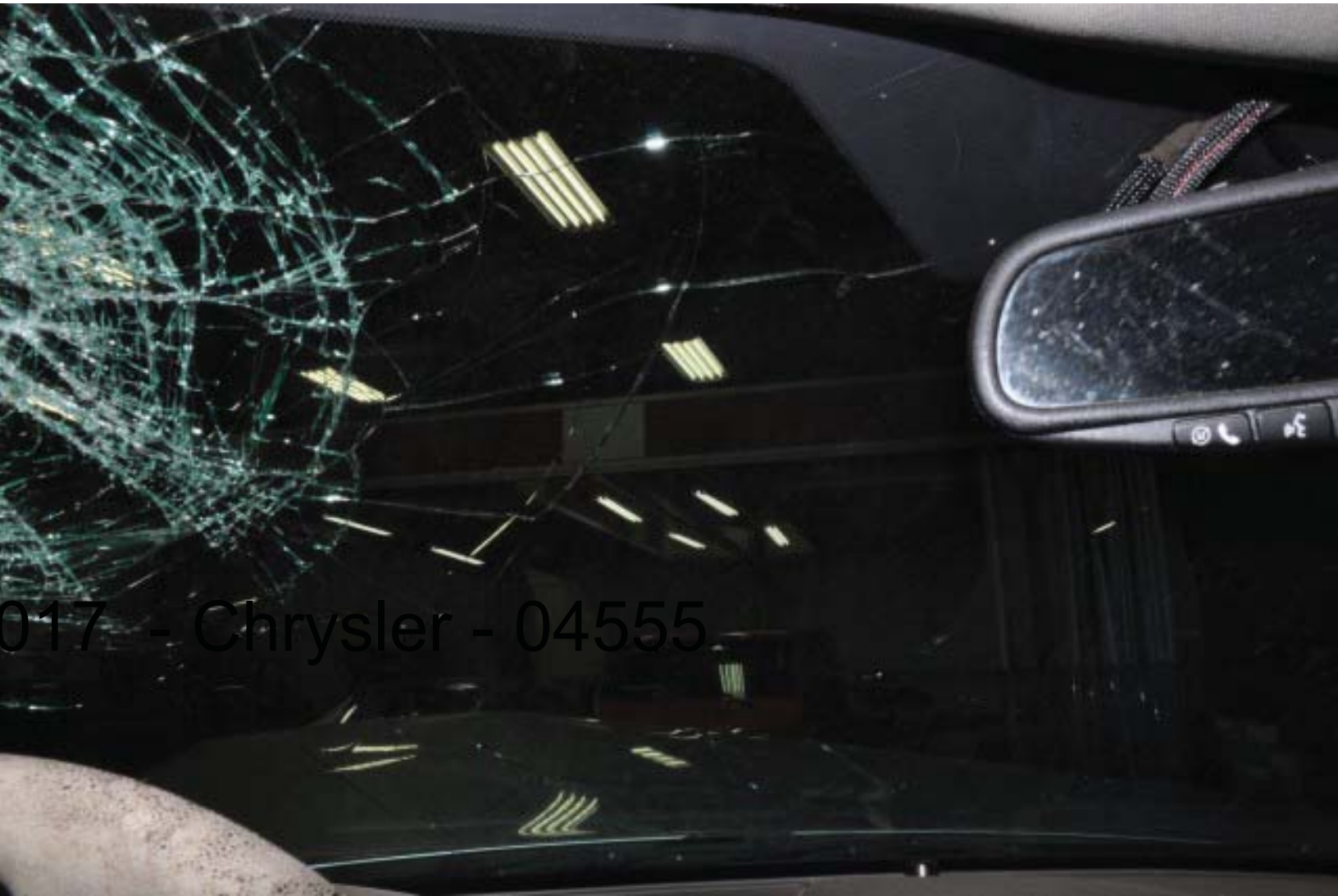
017 - Chrysler - 04552



017 - Chrysler - 04553



017 - Chrysler - 04554



017 - Chrysler - 04555



017 - Chrysler - 04556



017 - Chrysler - 04557



017 - Chrysler - 04558



017 - Chrysler - 04559



017 - Chrysler - 04560



017 - Chrysler - 04561



017 - Chrysler - 04562



017 - Chrysler - 04563



017 - Chrysler - 04564



017 - Chrysler - 04565



017 - Chrysler - 04566



017 - Chrysler - 04567





017 - Chrysler - 04569



017 - Chrysler - 04570



017 - Chrysler - 04571



017 - Chrysler - 04572



017 - Chrysler - 04573



017 - Chrysler - 04574



017 - Chrysler - 04575

017 - Chrysler - 04576





017 - Chrysler - 04577



017 - Chrysler - 04578



017 - Chrysler - 04579



017 - Chrysler - 04580



017 - Chrysler - 04581



017 - Chrysler - 04582

017 - Chrysler - 04583



017 - Chrysler - 04584





017 - Chrysler - 04585



017 - Chrysler - 04586



017 - Chrysler - 04587



017 - Chrysler - 04588



017 - Chrysler - 04589



017 - Chrysler - 04590



017 - Chrysler - 04591



017 - Chrysler - 04592



017 - Chrysler - 04593











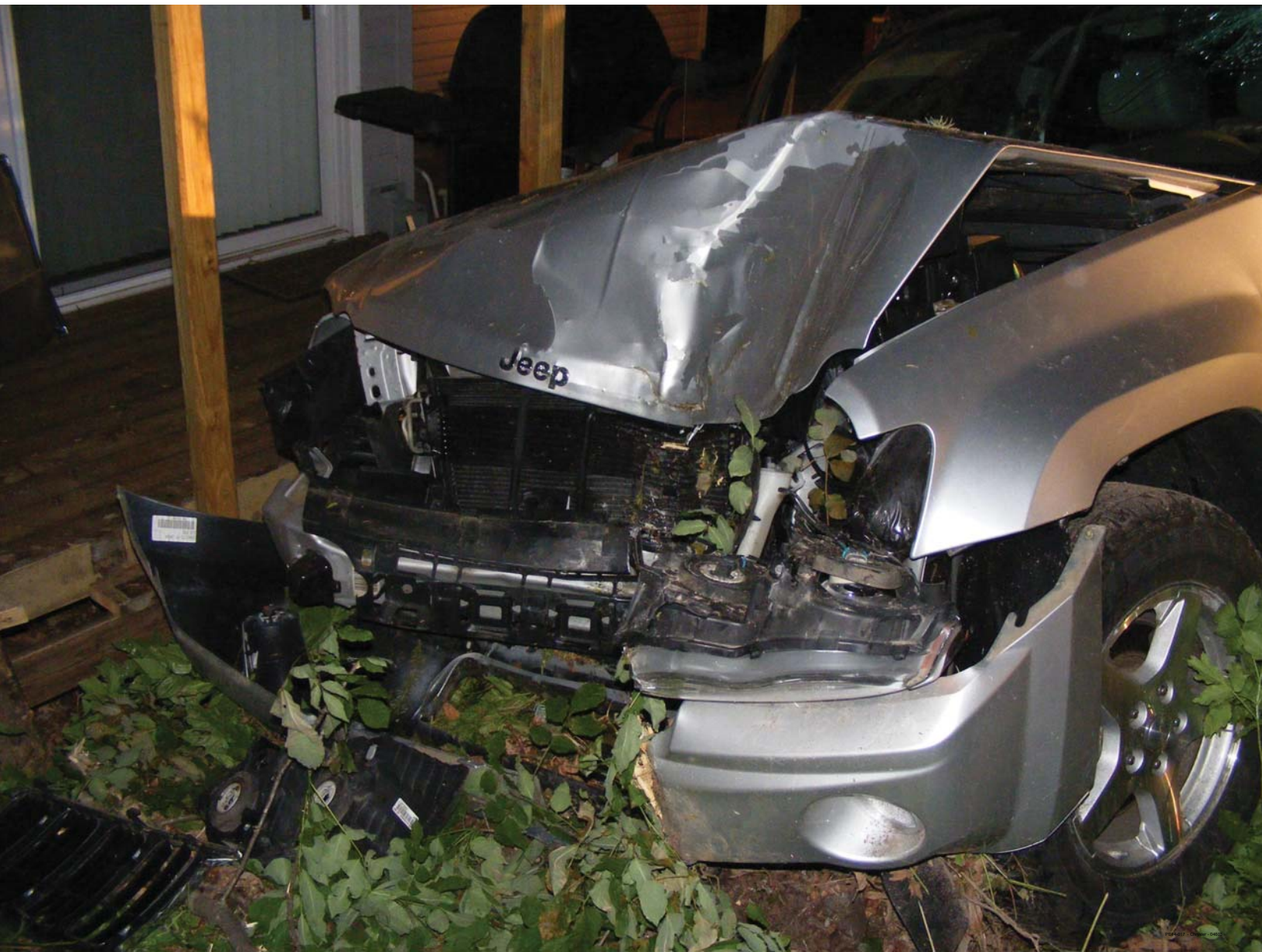


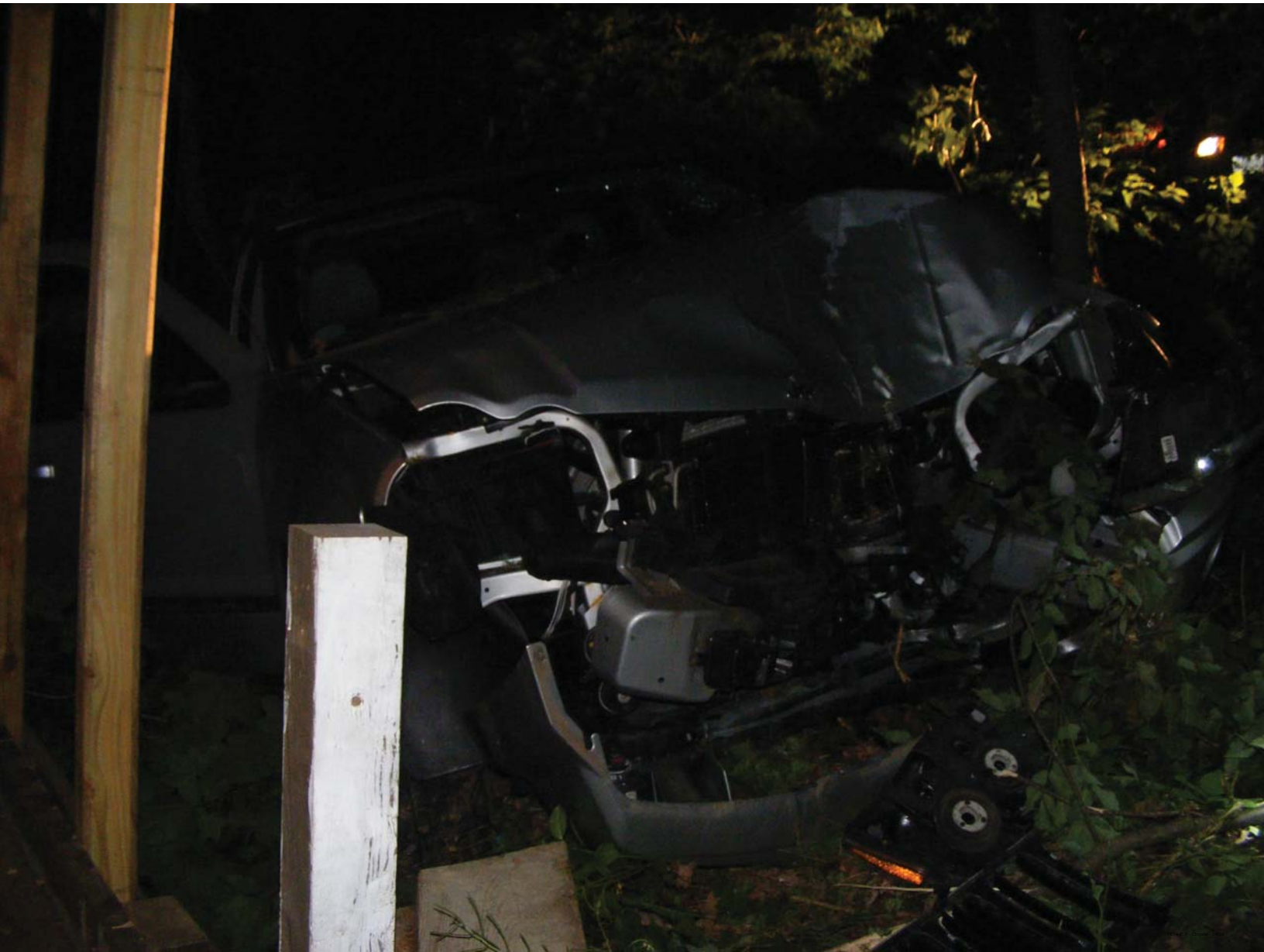




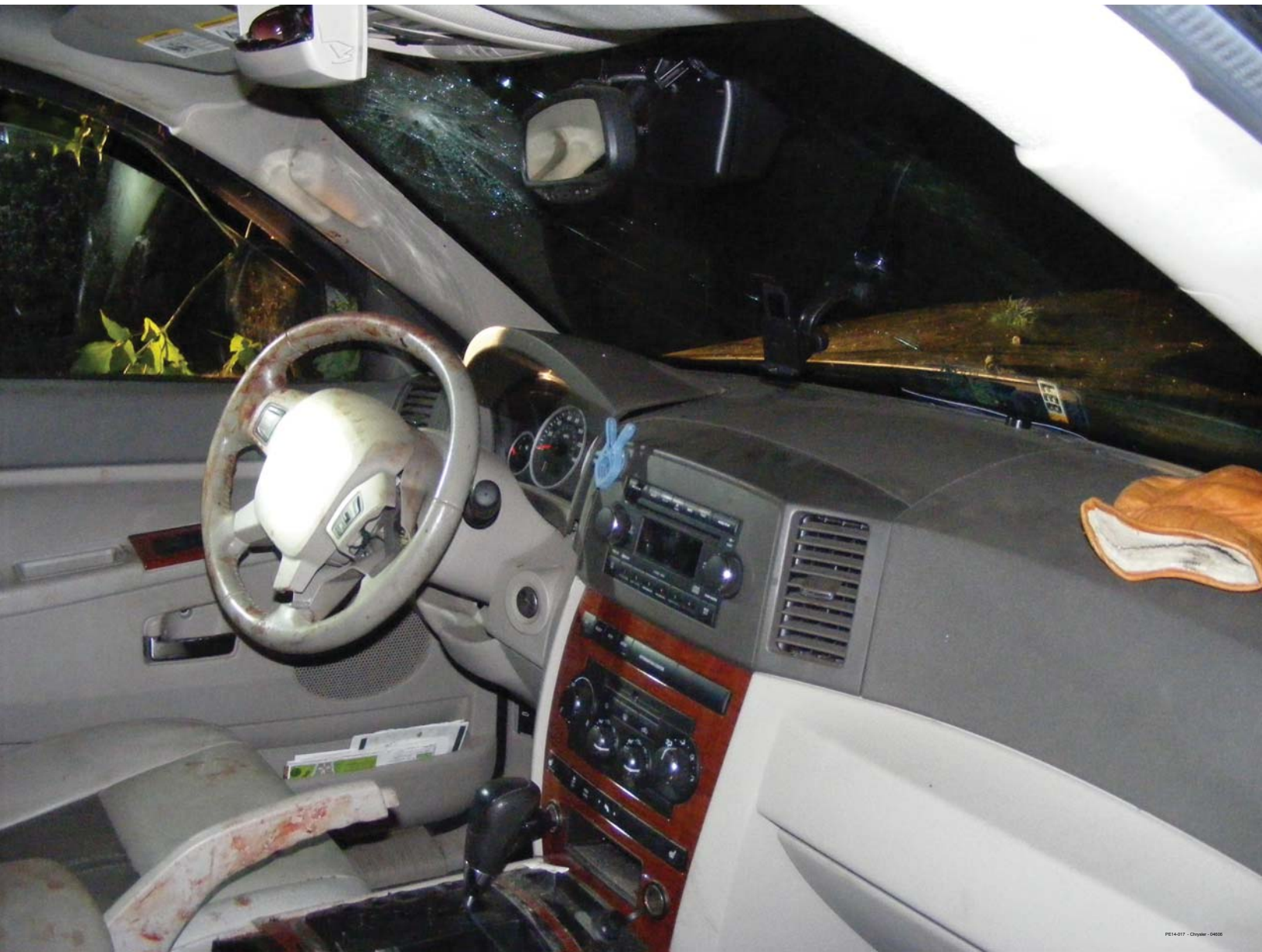






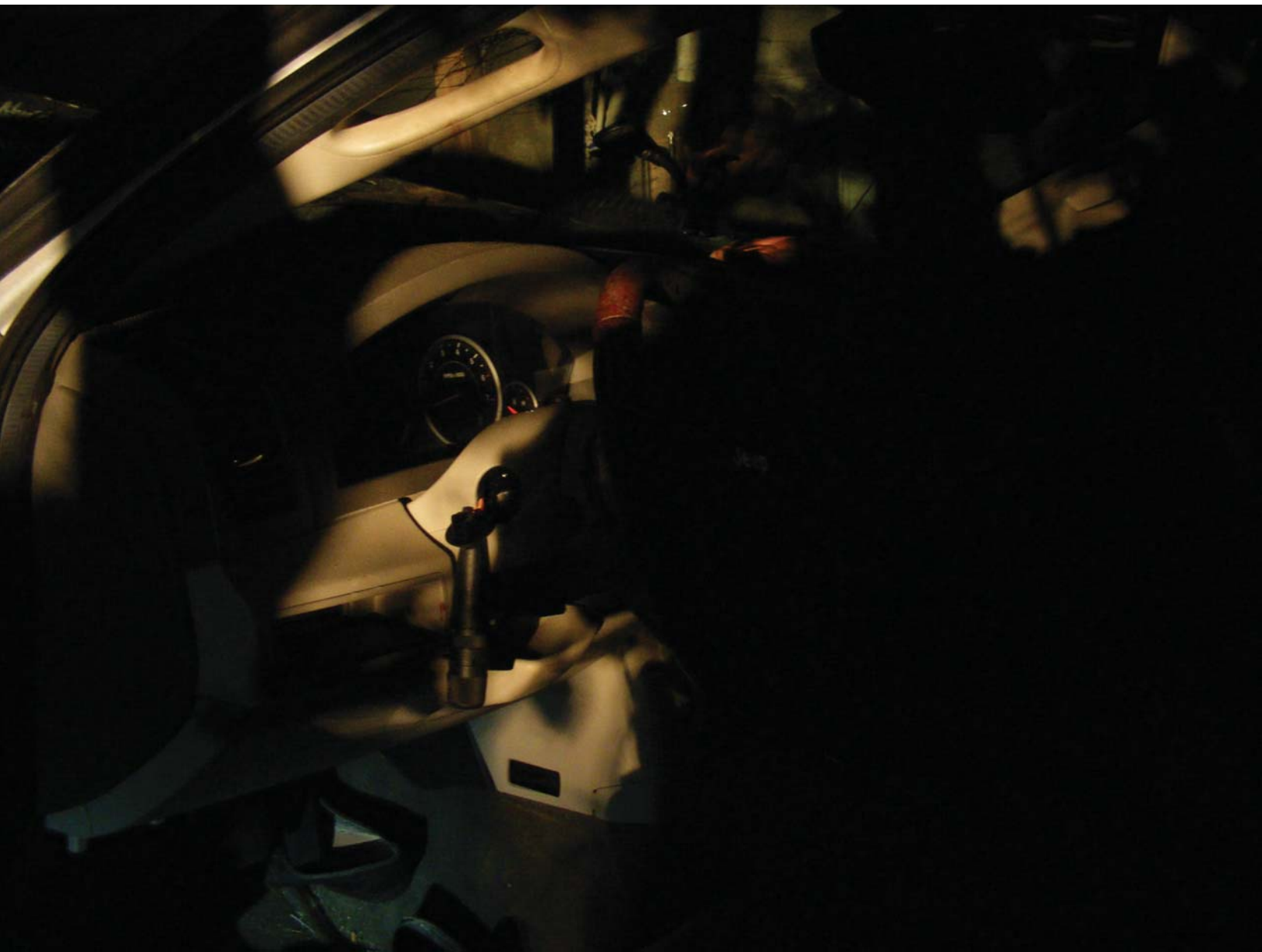










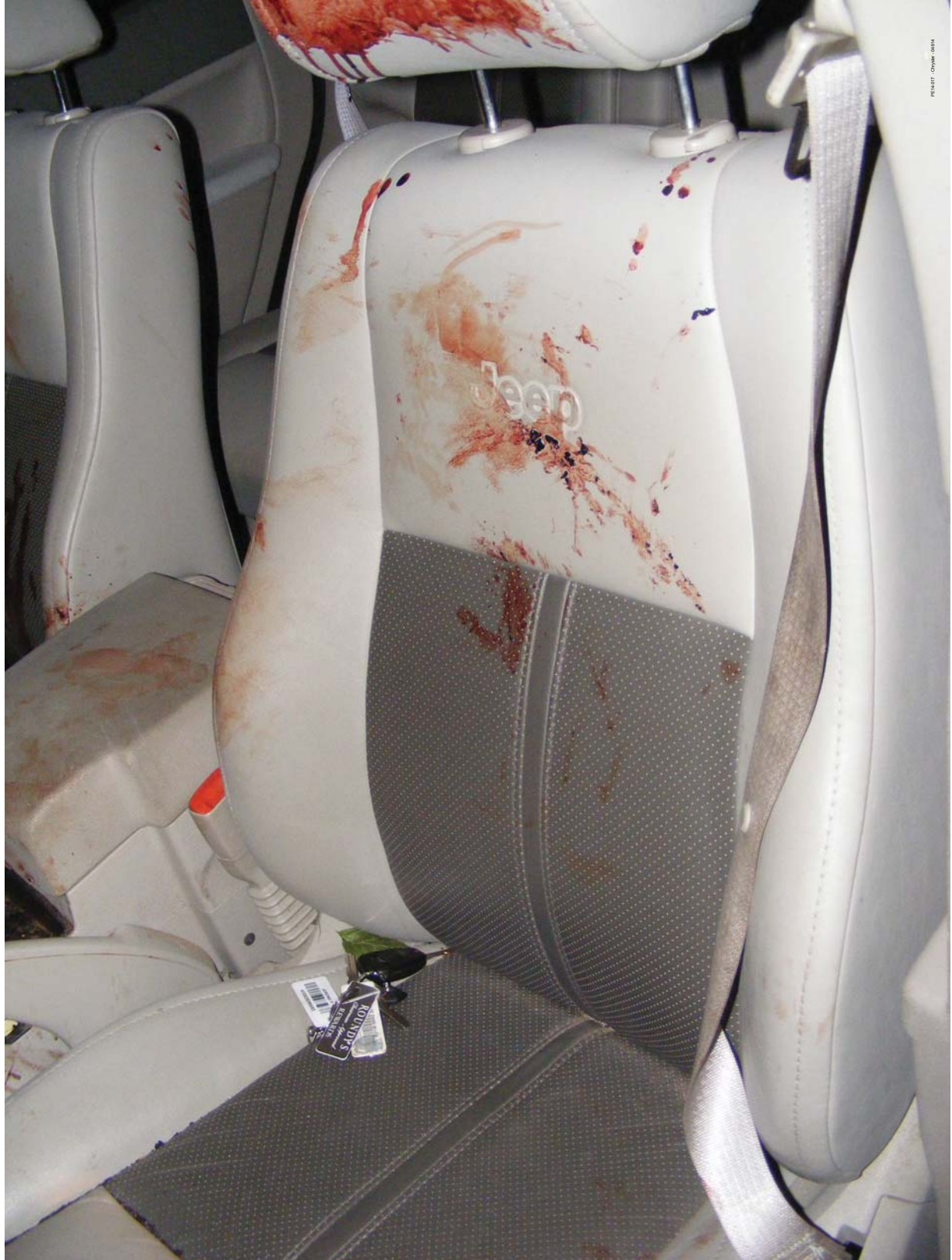






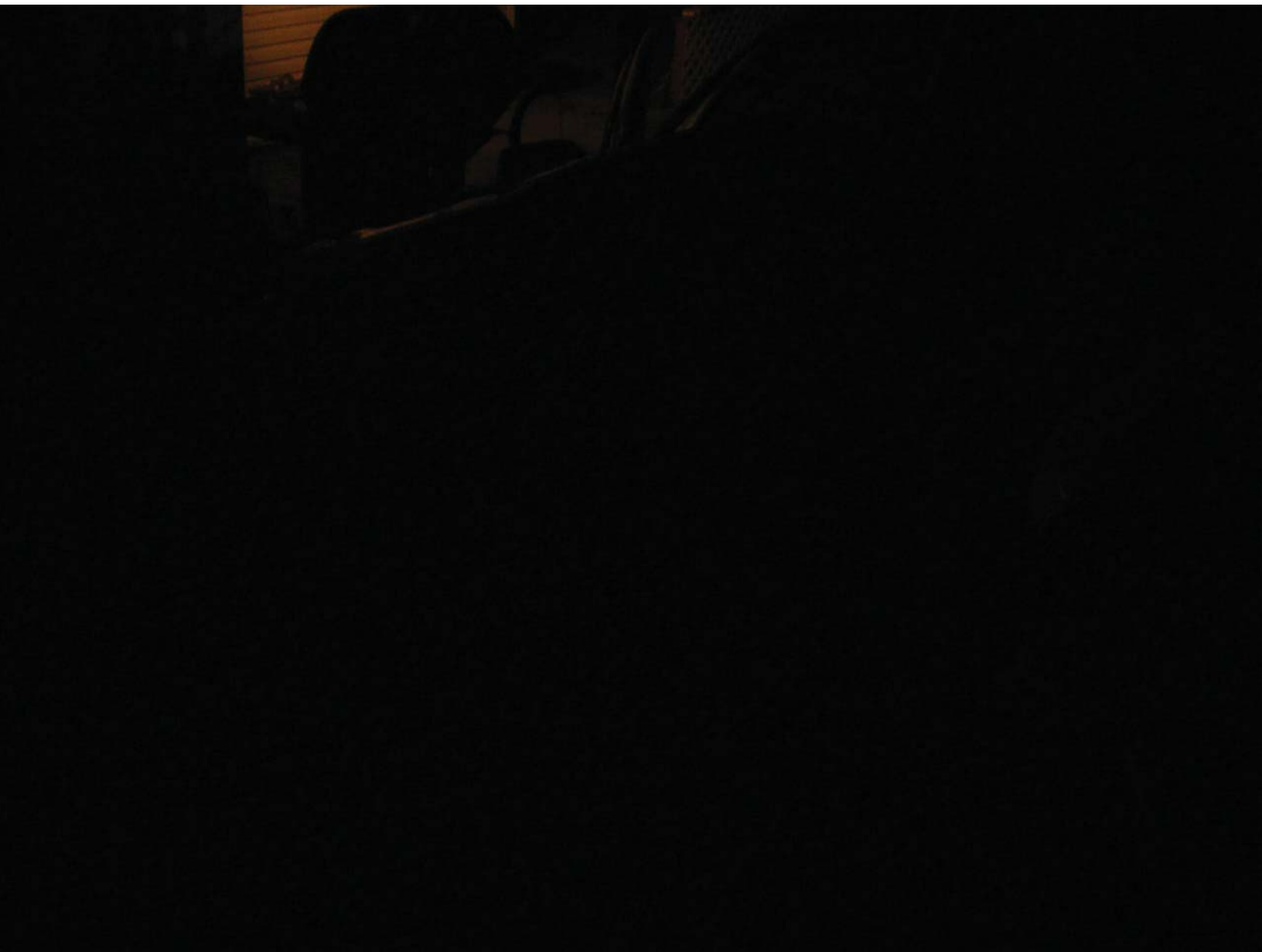


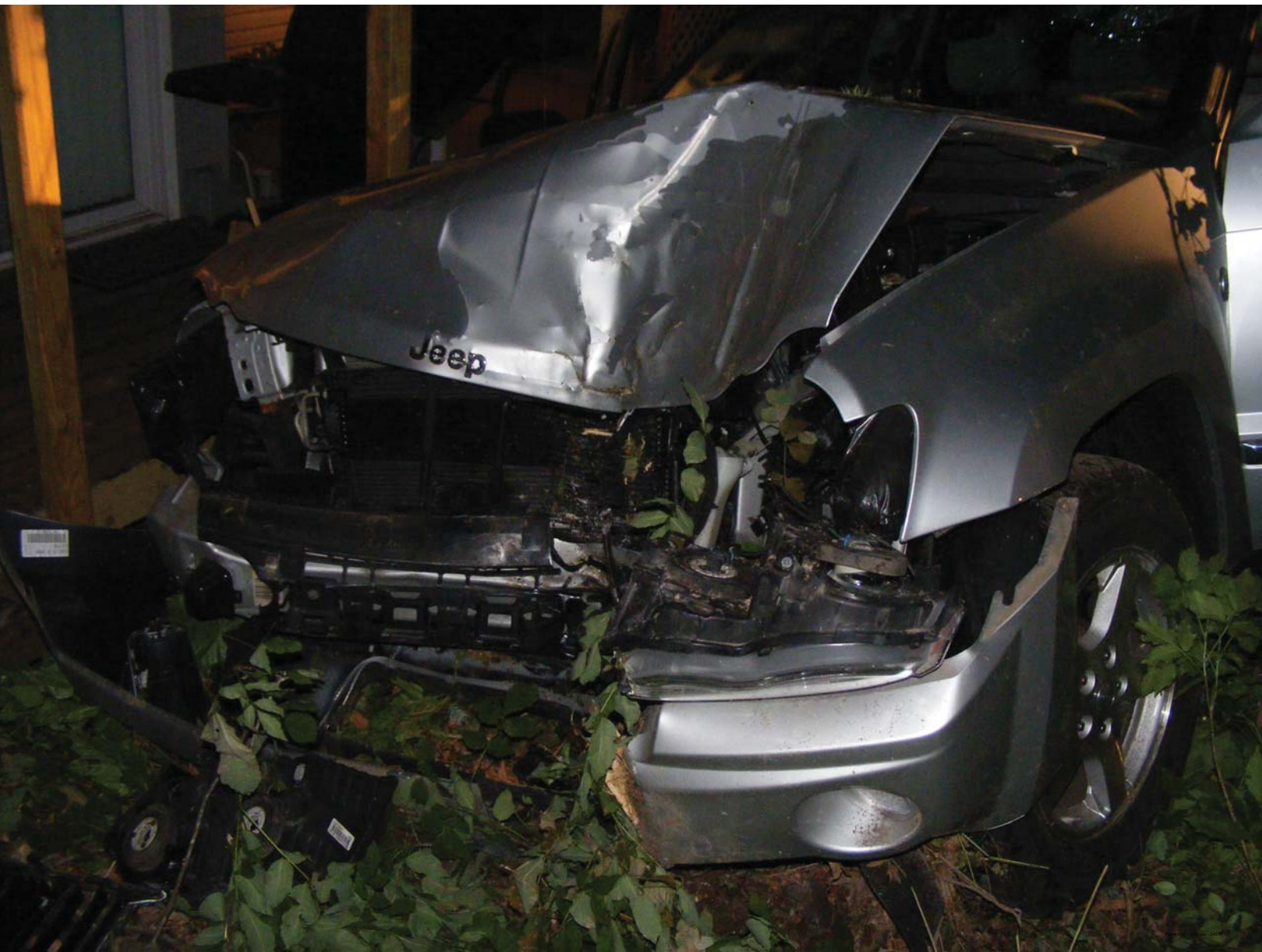




FILED 07-09-2014































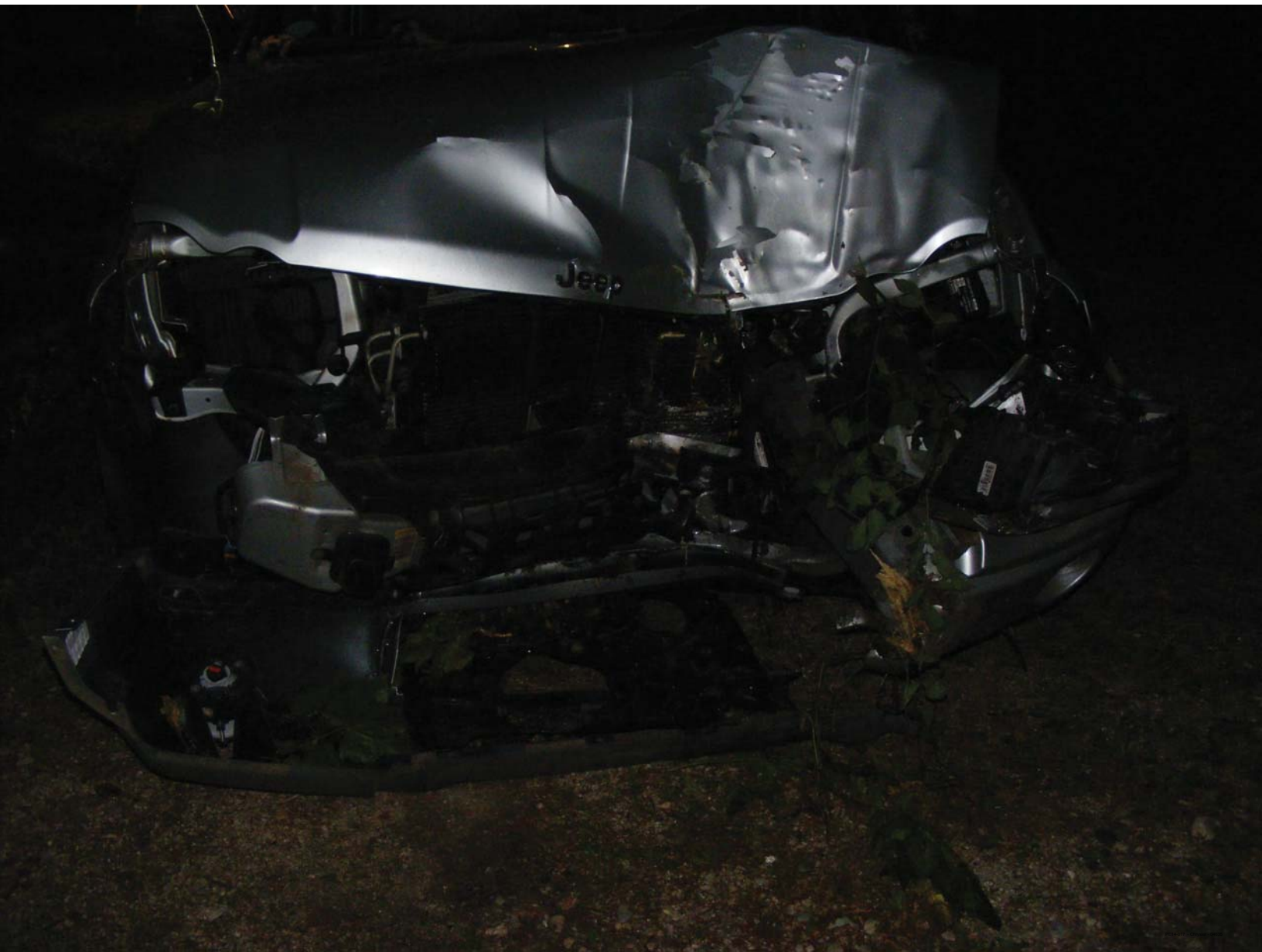
























James J. Murphy
(1959 - 2007)

Don C. Prachthausen
Kevin J. Kukor
Keith R. Stachowiak
Thadd J. Llaurado
Mark D. Baus
M. Josef Zimmermann

Offices in:
Milwaukee Downtown
Milwaukee Southside
Mequon
Waukesha

August 9, 2012

Mr. Terrence C. Thom
Stafford Rosenbaum
1200 North Mayfair Road, Suite 430
Milwaukee, WI 53226-3282

Re: Our Client: [REDACTED]
D/Injury: 6-1-2012

Dear Terry:

This will confirm our telephone conversation of August 7, 2012, wherein I indicated to you that I had been retained by [REDACTED] relating to a product liability case involving a 2005 Jeep Grand Cherokee, VIN 1J8HR58205C [REDACTED] wherein the airbag failed to deploy on June 1, 2012.

It is my understanding that Chrysler had an investigator do a download of the black box of the subject vehicle and wrote a report. I requested that a copy of the download and the report be provided to me. You stated you would get back to me on this.

In the meantime, [REDACTED] is recovering from his injuries. I anticipate presenting you with a demand letter as well special damages sometime in the near future.

I have possession of the subject vehicle. If you or any of your representatives would like to inspect it, please give me a call, and we will make the necessary arrangements.

In the meantime, if you have questions, please do not hesitate to contact me.

Very truly yours,

MURPHY & PRACHTHAUSER, S.C.


Thadd J. Llaurado

TJL:jl



Wisconsin Motor Vehicle Accident Report

A E U

Document Number Override

Police No. 12-107

INSTRUCTIONS
Please use a Black Ink Pen or #2 Pencil.
Mark Areas as shown:
Correct Mark
Incorrect Marks

County	64
0 0	0 0
1 1	1 1
2 2	2 2
3 3	3 3
4 4	4 4
5 5	5 5
6 6	6 6
7 7	7 7
8 8	8 8
9 9	9 9

MUN/TWP	04
0 0	0 0
1 1	1 1
2 2	2 2
3 3	3 3
4 4	4 4
5 5	5 5
6 6	6 6
7 7	7 7
8 8	8 8
9 9	9 9

Accident Date		
MONTH	DAY	YEAR
Jan		
Feb	01	12
Mar	0 0	0 0
Apr	1 0	0 1
May	2 2	0 0
June	3 3	0 3
July	4 4	0 4
Aug	5 5	0 5
Sept	6 6	0 6
Oct	7 7	0 7
Nov	8 8	0 8
Dec	9 9	0 9

Time of Accident (Military Time)	
HOUR	MIN.
21	45
0 0	0 0
1 1	1 1
2 2	2 2
3 3	3 3
4 4	4 4
5 5	5 5
6 6	6 6
7 7	7 7
8 8	8 8
9 9	9 9

Total Number		
UNITS	INJURED	KILLED
0101	00	00
0 0	0 0	0 0
1 1	1 1	1 1
2 2	2 2	2 2
3 3	3 3	3 3
4 4	4 4	4 4
5 5	5 5	5 5
6 6	6 6	6 6
7 7	7 7	7 7
8 8	8 8	8 8
9 9	9 9	9 9

Hit & Run	Y
Government Property	Y
Fire (Narrative)	Y
Photos Taken (Narrative)	N
Trailer or Towed (Narrative)	N
Truck or Bus (Last Page)	Y
Load Spillage	Y
Construction Zone	Y
Names Exchanged	Y

Unit #
Sheet No. Of
11

ACCIDENT LOCATION
Public Highway, Intersection/Related
Public Highway, Non-Intersection
Parking Lot
Private Property or Road

LATITUDE (GPS) Degrees: Minutes: Seconds: LONGITUDE (GPS) Degrees: Minutes: Seconds:

ON Hwy No. and / Street Name **SPLEAS SKONEY RD** Estimated FT. N W S E FROM/AT Hwy No. and / Street Name

House # Utility # Fire # Railroad # Other **1059** Agency Space Special Study

Unit Number	Unit Type	Total Number of Occupants	Direction of Travel (Before the Accident)	Unit Number	Unit Type	Total Number of Occupants	Direction of Travel (Before the Accident)
2 3 4	2 3 4	0 2 3 4 5 6	N	1 2 3 4	1 2 3 4	0 1 2 3 4 5 6	N
5 6 7 8	5 6 7	Other	W E	5 6 7 8	5 6 7	Other	W E
9 10			S	9 10			S

Speed Limit OPERATOR Last NAME First M.I.

ADDRESS Street & Number

City & State ZIP Phone Number

Driver's License Number State Exp. Year

Date of Birth Sex Operating as Classified: Class Endorse (Mark All That Apply)

On Duty Accident P Police E EMT/First Responder F Fire Fighter H Winter Hwy Maintenance CMV Y N

Severity	SEAT Position	SAFETY Equipment	AIRBAG	EJECTED	Severity	SEAT Position	SAFETY Equipment	AIRBAG	EJECTED
K N	1	1	1 Deployed 2 Non Deployed 3 Not Applicable 4 Unknown	1 Not Applicable 2 Not Ejected 3 Totally Ejected 4 Partially Ejected 5 Unknown	K N	1	1	1 Deployed 2 Non Deployed 3 Not Applicable 4 Unknown	1 Not Applicable 2 Not Ejected 3 Totally Ejected 4 Partially Ejected 5 Unknown

TRAPPED/EXTRICATED 1 Not Applicable 2 Not Trapped 3 Trapped/Extricated 4 Trapped/Not Extricated 5 Unknown Medical Transport Y N

Vehicle Owner Same Last Name First M.I.

Street Address

City & State ZIP Phone Number

Year of Vehicle Make Model Body Style Color

Vehicle ID Number

License Plate Number Plate Type State Exp. Year

Policy Holder's Name Same Citation

Liability Insurance Company Stat. #

Occupant Unit Number	NAME Last First M.I.	Date of Birth	Sex	Severity	SEAT Position	SAFETY Equipment	AIRBAG
1 2 3 4 5			M F	K N	1	1	1 Deployed 2 Non Deployed 3 Not Applicable 4 Unknown
6 7 8 9 10				A B C			

Address Same as Operator EJECTED 1 Not Applicable 2 Not Ejected 3 Totally Ejected 4 Partially Ejected 5 Unknown TRAPPED/EXTRICATED 1 Not Applicable 2 Not Trapped 3 Trapped/Extricated 4 Trapped/Not Extricated 5 Unknown Medical Transport Y N Agency Space

MV4000 907 EMS Number PE14-017 - Chrysler - 04310

Please Do Not Write in This Unnumbered Space

Accident No.

Date

Location

Occupant Unit Number 1 2 3 4 5 6 7 8 9 10	NAME Last	First	M.I.	Date of Birth	Sex (M) (F)	Severity (K) (N) (A) (B) (C)	SEAT Position	SAFETY Equipment	AIRBAG 1 Deployed 2 Non Deployed 3 Not Applicable 4 Unknown
	ADDRESS Street & Number		City & State		ZIP				
Address Same as Operator Yes No	EJECTED 1 Not Applicable 2 Not Ejected	3 Totally Ejected 4 Partially Ejected 5 Unknown	TRAPPED/EXTRICATED 1 Not Applicable 2 Not Trapped	3 Trapped/Extricated 4 Trapped/Not Extricated 5 Unknown	Medical Transport Y N	Agency Space			

Occupant Unit Number 1 2 3 4 5 6 7 8 9 10	NAME Last	First	M.I.	Date of Birth	Sex (M) (F)	Severity (K) (N) (A) (B) (C)	SEAT Position	SAFETY Equipment	AIRBAG 1 Deployed 2 Non Deployed 3 Not Applicable 4 Unknown
	ADDRESS Street & Number		City & State		ZIP				
Address Same as Operator Yes No	EJECTED 1 Not Applicable 2 Not Ejected	3 Totally Ejected 4 Partially Ejected 5 Unknown	TRAPPED/EXTRICATED 1 Not Applicable 2 Not Trapped	3 Trapped/Extricated 4 Trapped/Not Extricated 5 Unknown	Medical Transport Y N	Agency Space			

Type of Accident

15 First Harmful Event 80
Most Harmful Event

Unit Number 2 3 4 5 6 7 8 9 10	Unit Number 1 2 3 4 5 6 7 8 9 10
--------------------------------------	--

(select one per vehicle)

Collision With Object Not Fixed

1 Motor Vehicle in Transport	1
2 Parked Motor Vehicle	2
3 Deer	3
4 Pedalcycle	4
5 Pedestrian	5
6 Railway Train	6
7 Other Animal	7
8 Motor Vehicle in Transport In Other Roadway	8
9 Other Object (Not Fixed)	9

Collision With Fixed Object

10 Traffic Sign Post	10
11 Traffic Signal	11
12 Utility Pole	12
13 Lum. Light Support	13
14 Other Post	14
15 Tree	15
16 Mailbox	16
17 Guardrail Face	17
18 Guardrail End	18
19 Median Barrier	19
20 Bridge Parapet End	20
21 Bridge/Pier/Abut.	21
22 Impact Attenuator	22
23 Overhead Sign Post	23
24 Bridge Rail	24
25 Culvert	25
26 Ditch	26
27 Curb	27
28 Embankment	28
29 Fence	29
30 Other Fixed Object	30
31 Unknown	31

Non-Collision

32 Overturn	32
33 Fire/Explosion	33
34 Immersion	34
35 Jackknife	35
36 Other Non-Collision	36

Driver Condition

Unit Number 2 3 4 5 6 7 8 9 10	Unit Number 1 2 3 4 5 6 7 8 9 10
--------------------------------------	--

88 Driver Factors (Or Pedestrians)

1 Appeared Normal	1
2 Reduced Alertness	2
3 Ability Impaired	3
4 Not Observed	4

89 Presence

1 Neither Alcohol nor Drugs Present 5

6 Yes—Alcohol Present	6
7 Yes—Drugs Present	7
8 Yes—Alcohol & Drugs Present	8
9 Unknown	9

90 Alcohol

AC Value

10 Test Not Given	10
11 Test Refused	11
12 Test Given, Alcohol Unknown	12
13 Test Given, No Alcohol Reported	13

91 Drugs

14 Test Not Given	14
15 Test Refused	15
16 Test Given, Drugs Unknown	16
17 Test Given, No Drugs Reported	17
18 Drugs Reported (Specify Below)	18
19 Marijuana	19
20 Cocaine	20
21 Opiates	21
22 Amphetamines	22
23 PCP	23
24 Other Drug Medication	24
25 Type Unknown	25

Unit # 2 3 4 5 6 7 8 9 10

Pedestrian

Location	Action
1 In Crosswalk	1 Walking not Facing Traffic
2 In Roadway	2 Disregarded Signal
3 Not in Roadway	3 Darting into Road
4 On Sidewalk	4 Dark Clothing
	5 Walking Facing Traffic

Manner of Collision

1 No Collision with Motor Vehicle in Transport

2 Rear-end	
3 Head On	
4 Rear to Rear	
5 Angle	
6 Sideswipe, Same Direction	
7 Sideswipe, Opposite Direction	
8 Unknown	

Unit # 2 3 4 5 6 7 8 9 10

Darken Numbered Area(s) of Vehicle Damage

10 None
11 Undercarriage
12 Total (Damage to All Areas)
13 Other
14 Unknown

Extent of Damage

1 None	4 Severe
2 Very Minor	5 Very Severe
3 Minor	6 Unknown

Vehicle Towed Due to Damage: (N) Vehicle Removed By: *Rude Tow*

Unit # 1 2 3 4 5 6 7 8 9 10

Darken Numbered Area(s) of Vehicle Damage

10 None
11 Undercarriage
12 Total (Damage to All Areas)
13 Other
14 Unknown

Extent of Damage

1 None	4 Severe
2 Very Minor	5 Very Severe
3 Minor	6 Unknown

Vehicle Towed Due to Damage: (Y) (N) Vehicle Removed By:

82 Fixed Object Struck

Unit #	Unit #	Unit #	Unit #
01			

Govt. Damage Tag # 83

PROPERTY OWNER Last First M.I. *Same*

ADDRESS Street & Number 85

City & State ZIP Phone Number () 87

Draw Diagram of Accident & Indicate North with an arrow in the circle.

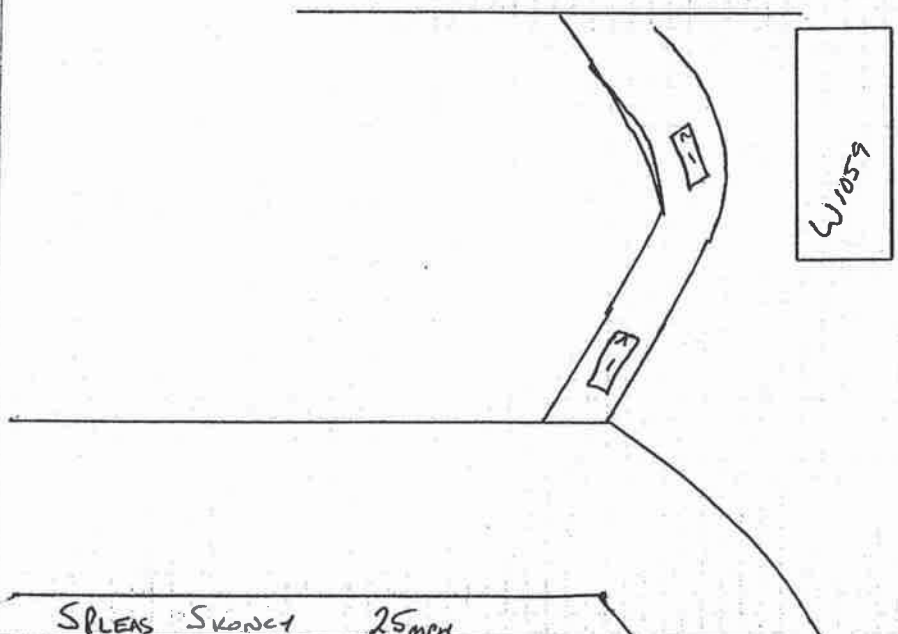


Pictorial Representation of Narrative

Supplemental Reports 101 (Y) Witness Statements 102 (Y) Measurements Taken 105 (Y)

Skidmarks to Impact
 Unit 1 100 Unit 2
 FEET

Surface Type: Grass



N UNIT 1 failed to stop in his driveway
A Accelerated and drove off the driveway
R over the embankment and struck a tree
A Air bag never deployed
T
I
V
E

Photos By: C. Knox
 105

What Drivers Were Doing

Unit Number	Unit Number
① ② ③ ④ ⑤	① ② ③ ④ ⑤
⑥ ⑦ ⑧ ⑨ ⑩	⑥ ⑦ ⑧ ⑨ ⑩
①	Going Straight ①
②	Making Left Turn ②
③	Making Right Turn ③
④	Slowing or Stopping ④
⑤	Stopped in Traffic ⑤
⑥	Legally Parked ⑥
⑦	Violating No Passing Zone ⑦
⑧	Illegally Parked ⑧
⑨	Parking Maneuver ⑨
⑩	Backing Maneuver ⑩
⑪	Changing Lanes ⑪
⑫	Overtaking on Left ⑫
⑬	Overtaking on Right ⑬
⑭	Making U Turn ⑭
⑮	Turning on Red ⑮
⑯	Merging ⑯
⑰	Negotiating Curve ⑰
●	Other ⑱

WITNESS NAME 107	Last	First	M.I.
ADDRESS 108	Street & Number		Date of Birth
City & State 109	ZIP	Phone Number 111	()

ACCESS CONTROL 112

- No Control (Unlimited Access)
- ② Full Control (Only Ramp Entry/Exit)
- ③ Partial Control

ROAD TERRAIN 113

Part A

- ① Straight
- ② Curve

Part B

- ③ Level/Flat
- Hill

LIGHT CONDITION 114

- ① Daylight
- ② Dark—Not Lighted
- ③ Dark—Lighted
- ④ Dawn
- ⑤ Dusk
- Unknown

TRAFFIC WAY 115

- ① Not Physically Divided (2-Way Traffic)
- ② Divided Highway, Median Strip, without Traffic Barrier
- ③ Divided Highway, Median Strip, with Traffic Barrier
- ④ One-Way Traffic
- Parking Lot or Private Property

ROAD SURFACE CONDITION 116

- Dry
- ② Wet
- ③ Snow/Slush
- ④ Ice
- ⑤ Sand; Mud, Dirt, Oil
- ⑥ Other
- ⑦ Unknown

WEATHER 118

- Clear
- ② Cloudy
- ③ Rain
- ④ Snow
- ⑤ Fog, Smog, Smoke (Freezing Rain or Drizzle)
- ⑦ Blowing Sand, Soil, Dirt, Snow
- ⑧ Severe Crosswinds
- ⑨ Other
- ⑩ Unknown

RELATION TO ROADWAY 117

- ① On Roadway
- Parking Lot or Private Property
- ③ Shoulder (Other Than Shoulder within Median or Gore)
- ④ Median (Other Than Median within Gore)
- ⑤ Outside Shoulder—Left
- ⑥ Outside Shoulder—Right
- ⑦ Off Roadway—Location Unknown
- ⑧ Gore (Area between Ramp & Highway)
- ⑨ On Ramp
- ⑩ Unknown

Traffic Control

Unit Number	Unit Number
① ② ③ ④ ⑤	① ② ③ ④ ⑤
⑥ ⑦ ⑧ ⑨ ⑩	⑥ ⑦ ⑧ ⑨ ⑩
●	No Control ①
②	Traffic Signal Operating ②
③	Traffic Signal Flashing ③
④	Stop Sign ④
⑤	Stop Sign with Flasher Warning ⑤
⑥	Warn Sign with Flasher ⑥
⑦	Yield Sign ⑦
⑧	Traffic Control Person ⑧
⑨	RR-xing Signal ⑨
⑩	Other ⑩
⑪	Other ⑪

Officer's Opinion of Possible Contributing Circumstances

A E U

Document Number Override

121

Driver Factors

Unit Number					Unit Number				
<input type="radio"/>	<input type="radio"/>	<input type="radio"/>	<input type="radio"/>	<input type="radio"/>	<input type="radio"/>	<input type="radio"/>	<input type="radio"/>	<input type="radio"/>	<input type="radio"/>
2	3	4	5	1	2	3	4	5	
6	7	8	9	10	6	7	8	9	10
N/A					N/A				
1	Exceeding Speed Limit				1				
2	Speed Too Fast/Condition				2				
3	Fail to Yield Right of Way				3				
4	Inattentive Driving				4				
5	Following Too Close				5				
6	Improper Turn				6				
7	Left of Center				7				
8	Disregarded Traffic Control				8				
9	Improper Overtaking				9				
10	Unsafe Backing				10				
11	Failure to Have Control				11				
12	Driver Condition				12				
13	Physically Disabled				13				
14	Other				14				

Vehicle Factors

Unit Number					Unit Number				
<input type="radio"/>	<input type="radio"/>	<input type="radio"/>	<input type="radio"/>	<input type="radio"/>	<input type="radio"/>	<input type="radio"/>	<input type="radio"/>	<input type="radio"/>	<input type="radio"/>
2	3	4	5	1	2	3	4	5	
6	7	8	9	10	6	7	8	9	10
N/A					N/A				
1	Brake System				1				
2	Tires				2				
3	Steering System				3				
4	Turn Signals				4				
5	Head Lamps				5				
6	Stop Lamps				6				
7	Tail Lamps				7				
8	Disabled in Prior Accident				8				
9	Other Disabled				9				
10	Mirrors				10				
11	Suspension System				11				
12	Other				12				

Highway Factors

Unit Number					Unit Number				
<input type="radio"/>	<input type="radio"/>	<input type="radio"/>	<input type="radio"/>	<input type="radio"/>	<input type="radio"/>	<input type="radio"/>	<input type="radio"/>	<input type="radio"/>	<input type="radio"/>
2	3	4	5	1	2	3	4	5	
6	7	8	9	10	6	7	8	9	10
N/A					N/A				
1	Snow, Ice or Wet				1				
2	Narrow Shoulder				2				
3	Low Shoulder				3				
4	Soft Shoulder				4				
5	Loose Gravel				5				
6	Rough Pavement				6				
7	Debris From Prior Accident				7				
8	Other Debris				8				
9	Sign Obscured or Missing				9				
10	Narrow Bridge				10				
11	Construction Zone				11				
12	Visibility Obscured				12				
13	Other				13				

OFFICER INFORMATION

Last	First	M.I.
KNOW	CRAIG	W.
Law Enforcement Agency Address		
109330 STEWART SCHOOL RD		
City & State		ZIP
EAST TOWN, WI.		53120
Phone Number		
(262) 642-3700		
Agency #	Enforcement Agency	Officer ID #
6509	TETPO	165

Date Notified			Time Notified (Military Time)		Time Arrived (Military Time)		Date of Report		
MONTH	DAY	YEAR	HR	MIN.	HR	MIN.	MONTH	DAY	YEAR
Jan							Jan		
Feb	01	12	21	45	21	45	Feb	06	12
Mar	00	00	00	00	00	00	Mar	00	00
Apr	01	01	01	01	01	01	Apr	01	01
May	02	02	02	02	02	02	May	02	02
June	03	03	03	03	03	03	June	03	03
July	04	04	04	04	04	04	July	04	04
Aug	05	05	05	05	05	05	Aug	05	05
Sept	06	06	06	06	06	06	Sept	06	06
Oct	07	07	07	07	07	07	Oct	07	07
Nov	08	08	08	08	08	08	Nov	08	08
Dec	09	09	09	09	09	09	Dec	09	09

Truck & Bus Accident Information (This Section Must Be Completed for Each Truck or Bus Involved in this Accident.)

When To Use This Section: *Did the accident involve...*

Part A

A truck or truck combination > 10,000 lbs GVWR/GCWR? Y N

Any vehicle displaying a hazardous materials placard? Y N

A vehicle designed to carry 9 or more people, including the driver? Y N

STOP! If all the responses to Part A are "NO" do not complete this Truck & Bus Accident Information Section. If there are any "YES" answers, continue to Part B.

Part B

Any person who was fatally injured? Y N

Any injured person who required transport for immediate medical treatment? Y N

One or more vehicles towed from the scene due to disabling damage? Y N

STOP! If all the responses to Part B are "NO" do not continue. If there are any "YES" answers, please complete this Truck & Bus Accident Information Section...

Hazardous Material Information

- Hazardous Material Class Numbers (1-2 digit):
- Hazardous Material "UN" Numbers (4 digit):
- Hazardous Material Placard Displayed? Y N
- Hazardous Cargo was Released? Y N

List the Hazardous Material(s) by Name in this Load:

List the Name(s) of Released Hazardous Material(s):

Carrier Information

Carrier Identification Numbers

US DOT LC

ICC MC IC

Carrier Address

Source: Vehicle Side Shipping Papers Trip Manifest Driver Log Book

Vehicle Information

Gross Vehicle Weight Rating LBS

Total # of Axles

Vehicle Configuration

1 Bus 2 Single Unit Vehicle 3 Single unit truck + 3 axles 4 Truck/Trailer 5 Truck/Tractor 6 Tractor/Trailer 7 Tractor/Doubles 8 Tractor/Triples 9 Unknown Heavy Truck 10 Log Truck

SEQUENCE OF EVENTS FOR THIS VEHICLE (Mark a total of one to four events in the order that they occurred.)

1	2	3	4	Ran off Road	1	2	3	4	Collision Involving Motor Vehicle in Transp.
1	2	3	4	Jackknife	1	2	3	4	Collision Involving Parked Motor Vehicle
1	2	3	4	Overturn (Rollover)	1	2	3	4	Collision Involving Train
1	2	3	4	Downhill Runaway	1	2	3	4	Collision Involving Pedalcycle
1	2	3	4	Cargo Loss or Shift	1	2	3	4	Collision Involving Animal
1	2	3	4	Explosion or Fire	1	2	3	4	Collision Involving Fixed Object
1	2	3	4	Separation of Units	1	2	3	4	Collision Involving Other Object
1	2	3	4	Collision Involving Pedestrian	1	2	3	4	Other

Cargo Body Type

1 Bus 2 Van-Enclosed box 3 Cargo Tank 4 Flatbed 5 Dump 6 Concrete Mixer 7 Auto Transporter 8 Garbage/Refuse 9 Other 10 Log Truck

Printed in U.S.A. GS03 321 Mark Reflex by Pearson MM97108-4