

PE14-017

CHRYSLER

08/20/2014

ENCLOSURE 7

FIELD DATA ALLEGED

DEFECT 2

CONSUMER COMPLAINTS

PHOTOS

17316539



36799 mile





WARNING

EVEN WITH ADVANCED AIR BAGS



- CHILDREN CAN BE KILLED OR SERIOUSLY INJURED BY THE AIR BAG.
- THE BACK SEAT IS THE SAFEST PLACE FOR CHILDREN.
- NEVER PUT A REAR-FACING CHILD SEAT IN THE FRONT.
- ALWAYS USE SEAT BELTS AND CHILD RESTRAINTS.
- SEE OWNER'S MANUAL FOR MORE INFORMATION ABOUT AIR BAGS.

66241230AA





AWA



AIR BAGS
KILLED OR
BY THE AIR BAG.
THE SAFEST PLACE
-FACING CHILD SEAT
BELTS AND CHILD
FOR MORE
AIR BAGS.

▲ WARNING: HIGHER ROLL OVER RISK

	<p>AVOID ABRUPT MANEUVERS AND EXCESSIVE SPEED.</p> <p>ALWAYS BUCKLE UP.</p> <p>SEE OWNER'S MANUAL FOR FURTHER INFORMATION.</p>	
---	--	--

SSS0154AB

▲ WARNING

EVEN WITH ADVANCED AIR BAGS

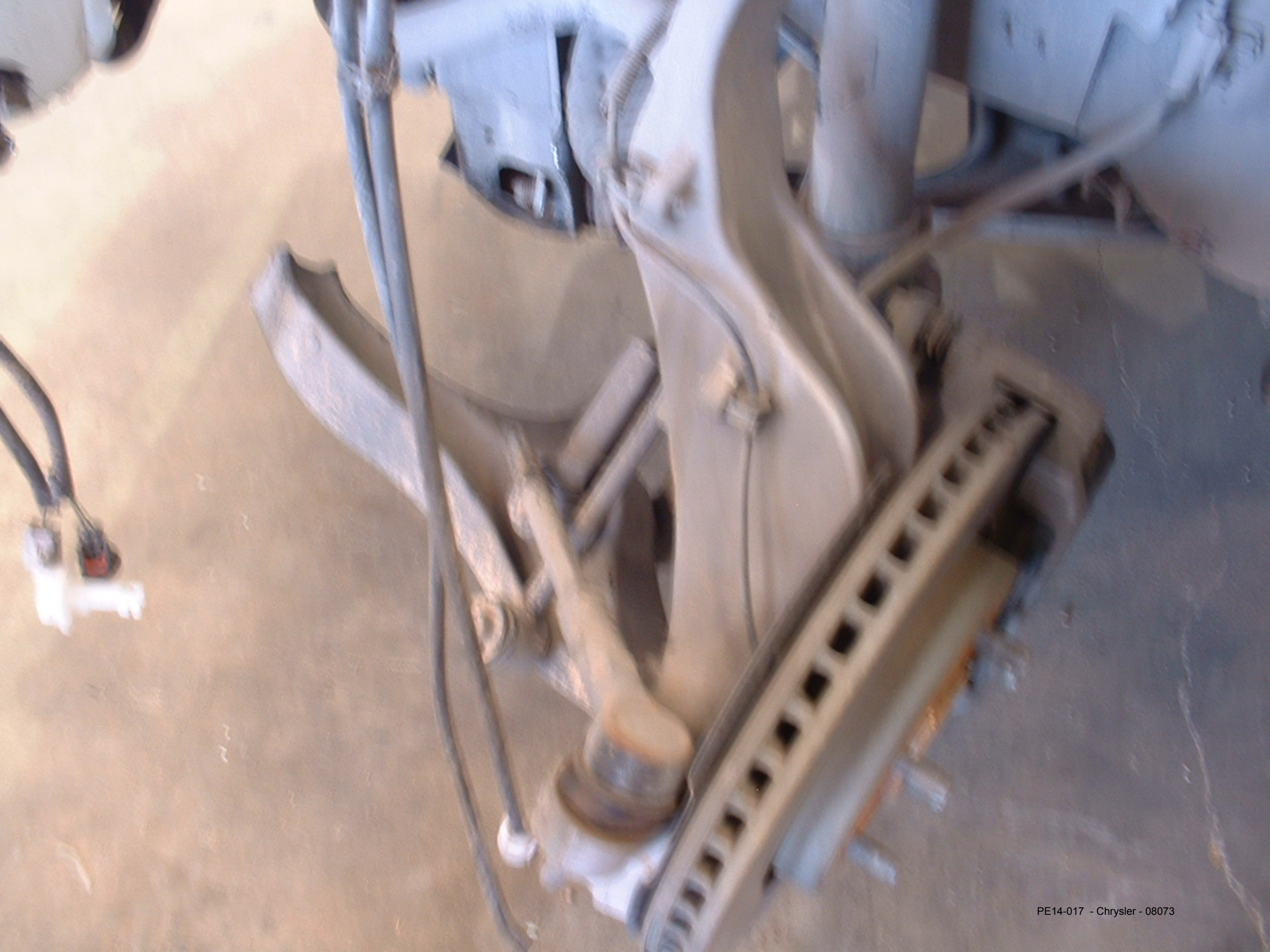


- CHILDREN CAN BE KILLED OR SERIOUSLY INJURED BY THE AIR BAG.
- THE BACK SEAT IS THE SAFEST PLACE FOR CHILDREN.
- NEVER PUT A REAR-FACING CHILD SEAT IN THE FRONT.
- ALWAYS USE SEAT BELTS AND CHILD RESTRAINTS.
- SEE OWNER'S MANUAL FOR MORE INFORMATION ABOUT AIR BAGS.

55361Z30AA





























BRAKE



ESP
BAS

RPM x 1000

TIRE PSI
0 30
32 30

P R N D
36799 mi



Tire Pressure Warning Light

BRAKE

Engine Light

Battery Light

ESP
BAS

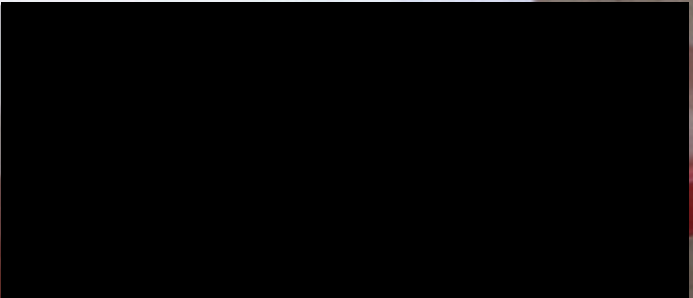
PAND
36799 mile

LEFT FRONT
LOW PRESSURE





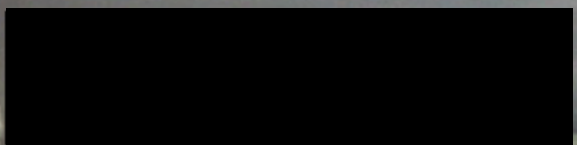
E33537







1J4HS58N76C



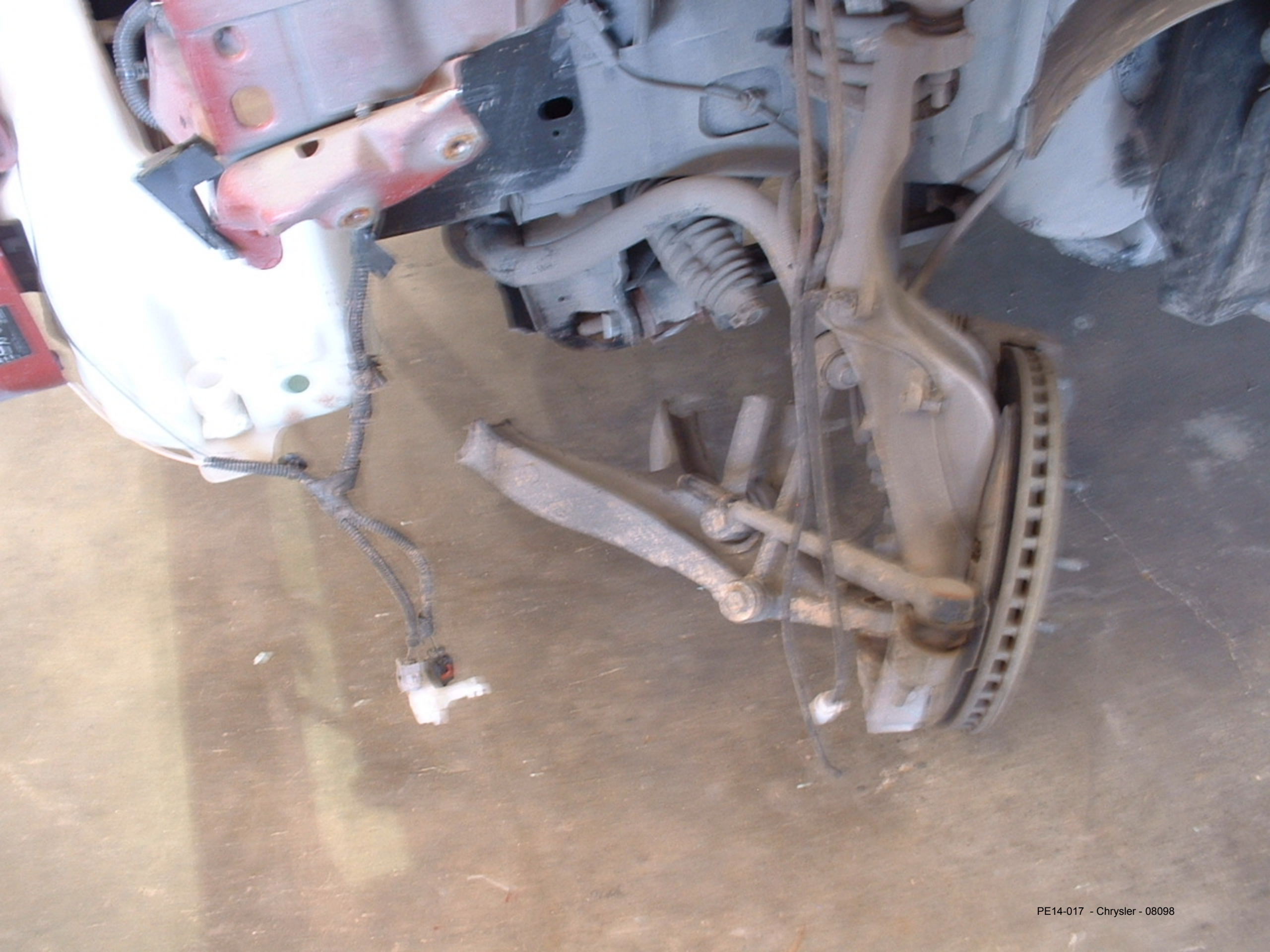












Back

2006 WK

Home

8.04

4.7L 1J4HS58N76C [REDACTED]



Show Shortcuts

ECU View

Flash Download

Network View

Vehicle Preparation

System View

More Options

DAIMLERCHRYSLER



Back 2006 WK ECU Overview - CCN 8.04 Show Shortcuts
4.7L 1J4HS58N76C [REDACTED]

Hardware Version: 12.00 Software Version: 10.33.00
Part Number: 56054012AF Country Code: USA

Data Display Actuators Misc. Functions More Options

View DTCs

Active: 2 Stored: 0 Pending: 0



DAIMLERCHRYSLER

Back

2006 WK

DTCs - CCN

8.04

4.7L 1J4HS58N76C



Show Shortcuts

Code	Status	Description
U0197	Active	Lost Communication With Hands Free Phone Module
U0184	Active	Lost Communication With Radio

Clear Stored DTCs

Environ. Data

Tech Tips

Toggle Row Height





PE14-017

CHRYSLER

08/20/2014

ENCLOSURE 7

FIELD DATA ALLEGED

DEFECT 2

CONSUMER COMPLAINTS

17334987

PHOTOS



PE14-017 - Chrysler - 08104



PE14-017 - Chrysler - 08105



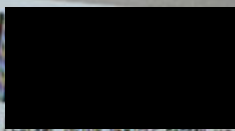
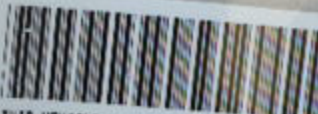
AI MLER CHRYSLER CORPORATION

: 2-06

1339 KG 2950 LB
17X7.5

1656 KG 3650 LB
17X7.5

GUAR: 2903 KG 06400 LB
WITH P245/65R17 TIRES
RIMS AT 242 KPA (35 PSI) COLD
WITH P245/65R17 TIRES
RIMS AT 242 KPA (35 PSI) COLD



THIS VEHICLE CONFORMS TO ALL APPLICABLE FEDERAL MOTOR VEHICLE SAFETY AND THEFT PREVENTION STANDARDS IN EFFECT ON THE DATE OF MANUFACTURE SHOWN ABOVE.

VIN: 1J8HG48N960



TYPE:

MPV

CON: 022312 387AA

VEHICLE MADE IN U.S.A.

PRINT: PSB

TRID: K735

4640500



EV
EV
EV

PE14-017 - Chrysler - 08108



PE14-017 - Chrysler - 08109



PE14-017 - Chrysler - 08110



PE14-017 - Chrysler - 08111



PE14-017 - Chrysler - 08112



PE14-017 - Chrysler - 08113



PE14-017 - Chrysler - 08114



PE14-017 - Chrysler - 08115



PE14-017 - Chrysler - 08116



PE14-017 - Chrysler - 08117



PE14-017 - Chrysler - 08118



PE14-017 - Chrysler - 08119



PE14-017 - Chrysler - 08120



PE14-017 - Chrysler - 08121

▲ WARNING

EVEN WITH ADVANCED AIR BAGS



- CHILDREN MUST BE SEATED PROPERLY IN ALL VEHICLES.
- THE SEAT BELT IS THE SAFEST PLACE FOR CHILDREN.
- NEVER PUT A CHILD IN THE REAR SEAT OF A TRUCK.
- ALWAYS USE SEAT BELTS AND CHILD SEATBELTS.
- ALWAYS WEAR SEATBELTS AND CHILD SEATBELTS TO PROTECT YOURSELF AND YOUR CHILDREN FROM AIR BAGS.

SAFETY

▲ WARNING: HIGHER ROLL OVER RISK



AVOID ABRUPT MANEUVERS AND EXCESSIVE SPEED.

ALWAYS buckle up!

SEE DRIVER'S MANUAL FOR FURTHER INFORMATION.



SAFETY

1400 MOTORS
 DUE 23,033



PE14-017 - Chrysler - 08123



PE14-017 - Chrysler - 08124



PE14-017 - Chrysler - 08125



PE14-017 - Chrysler - 08126



PE14-017 - Chrysler - 08127



PE14-017 - Chrysler - 08128

DAIMLERCHRYSLER



2006 XC **ECM Overview - DCM** 8.04
4.7L 1J8HG48N960 [REDACTED] Show Shortcuts

Hardware Version: 00.C0 Software Version: 03.04.03
Part Number: 56043195BD Country Code: USA

Data Display Actuators Misc. Functions More Options

View DTCs

Active: 0 Stored: 0 Pending: 0





PE14-017 - Chrysler - 08130



PE14-017 - Chrysler - 08131



PE14-017 - Chrysler - 08132



PE14-017 - Chrysler - 08133





PE14-017 - Chrysler - 08135



PE14-017 - Chrysler - 08136



PE14-017 - Chrysler - 08137



PE14-017 - Chrysler - 08138



PE14-017 - Chrysler - 08139

DAIMLERCHRYSLER



Back 2008 XK ECU Overview - ORC 8:04 Show Shortcuts
4.7L 1J8HG48N86C [REDACTED]

Hardware Version: 00.00 Software Version: 06.D5.E0
Part Number: 68000147AA Country Code: USA

Data Display Actuators Misc. Functions More Options

View DTCs

Active: 0 Stored: 0 Pending: 0

