

INFORMATION Redacted PURSUANT TO THE FREEDOM OF  
INFORMATION ACT (FOIA), 5 U.S.C. 552(B)(6)

PE14-017

CHRYSLER

08/20/2014

ENCLOSURE 7

FIELD DATA ALLEGED

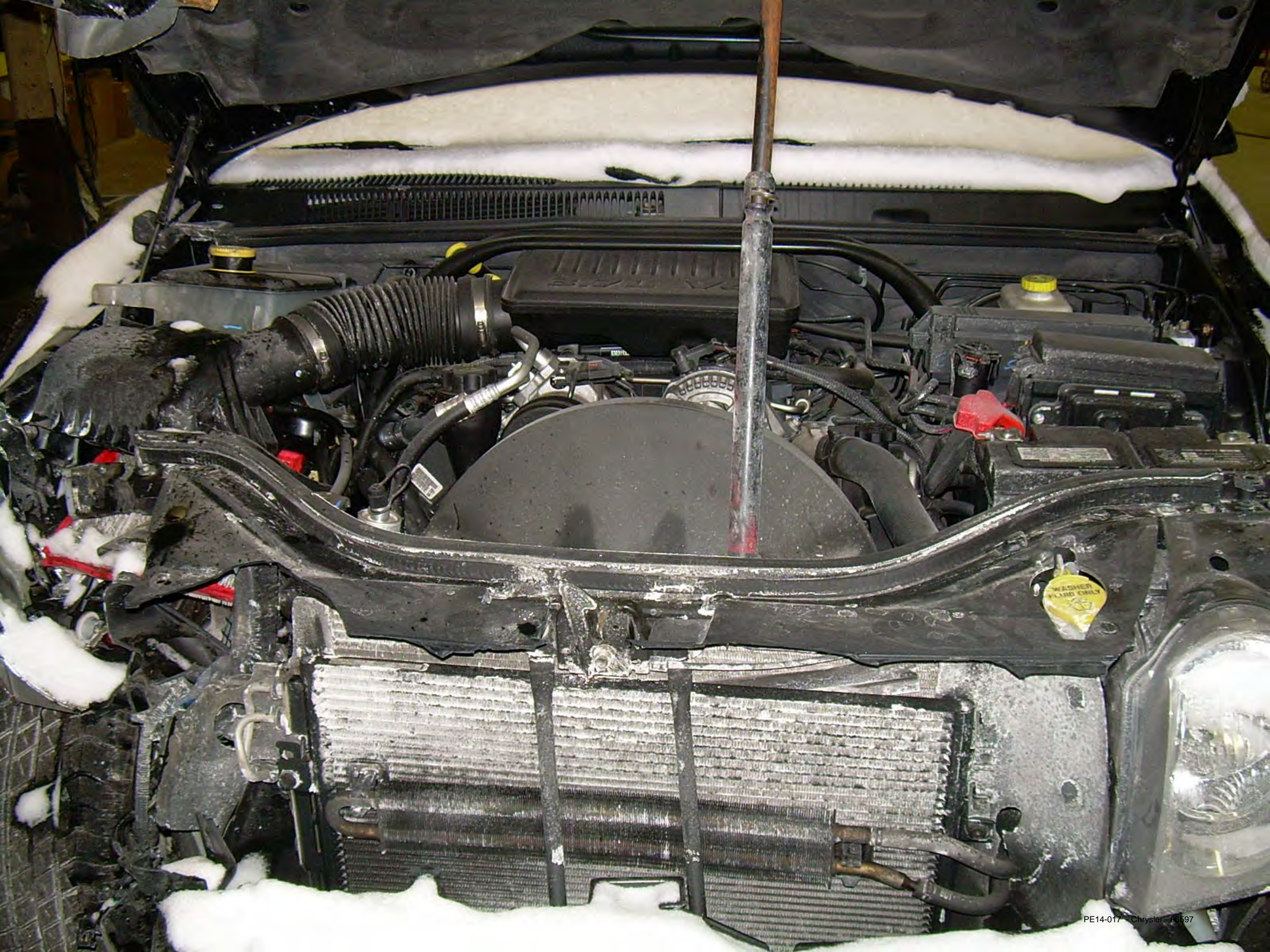
DEFECT 2

CONSUMER COMPLAINTS

15921644

PHOTOS





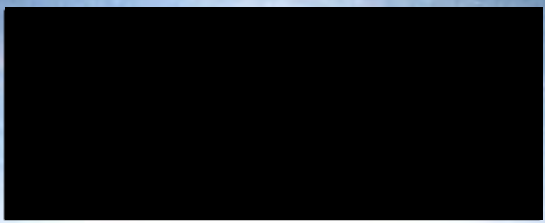












Show Shortcuts

Hardware Version: 02.00.00  
Part Number: 02.00.00

Software Version: 0a.E3.01  
Country Code: USA

Data Display



Functions

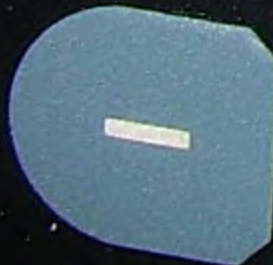
More Options

View DTCs

Active: 1

Stored: 0

Pending: 0





Back

2005

ORC

7.03



Code	Status	Description
U0171	Active	Lost Communication w/ Up-Front Right Satellite Acceleration Sensor

Tech  
Tips

Toggle



ENTER

BACK

SHIFT

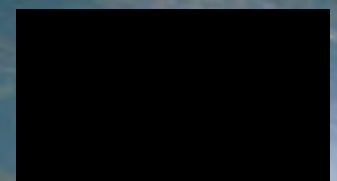
- +



Back

2005 WK

EGT



Hardware Version: 00.B0  
Part Number: 56048195A7

Data Display

[Blurred]

[Blurred]

Optic

View DTCs

Active: 0

Stored: 0

Pending: 0









PXF536

RF

847  
673  
7600  
X1

















































Jeep















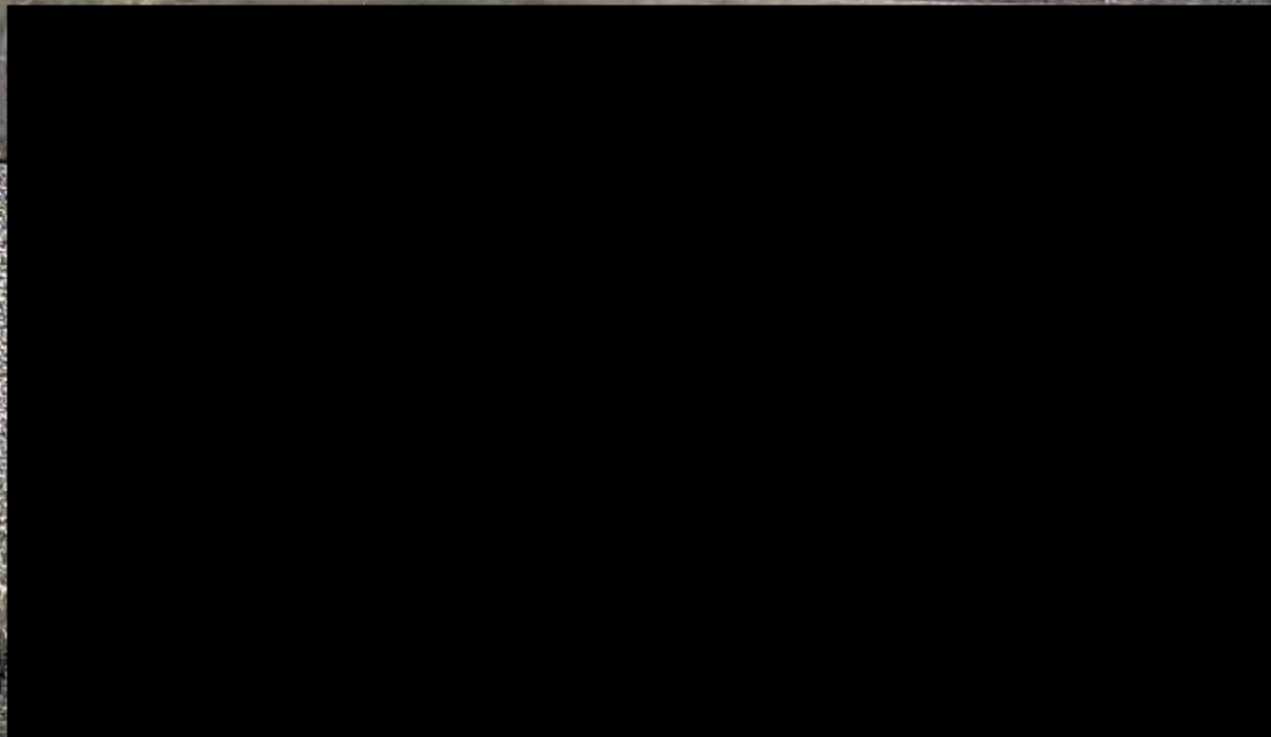






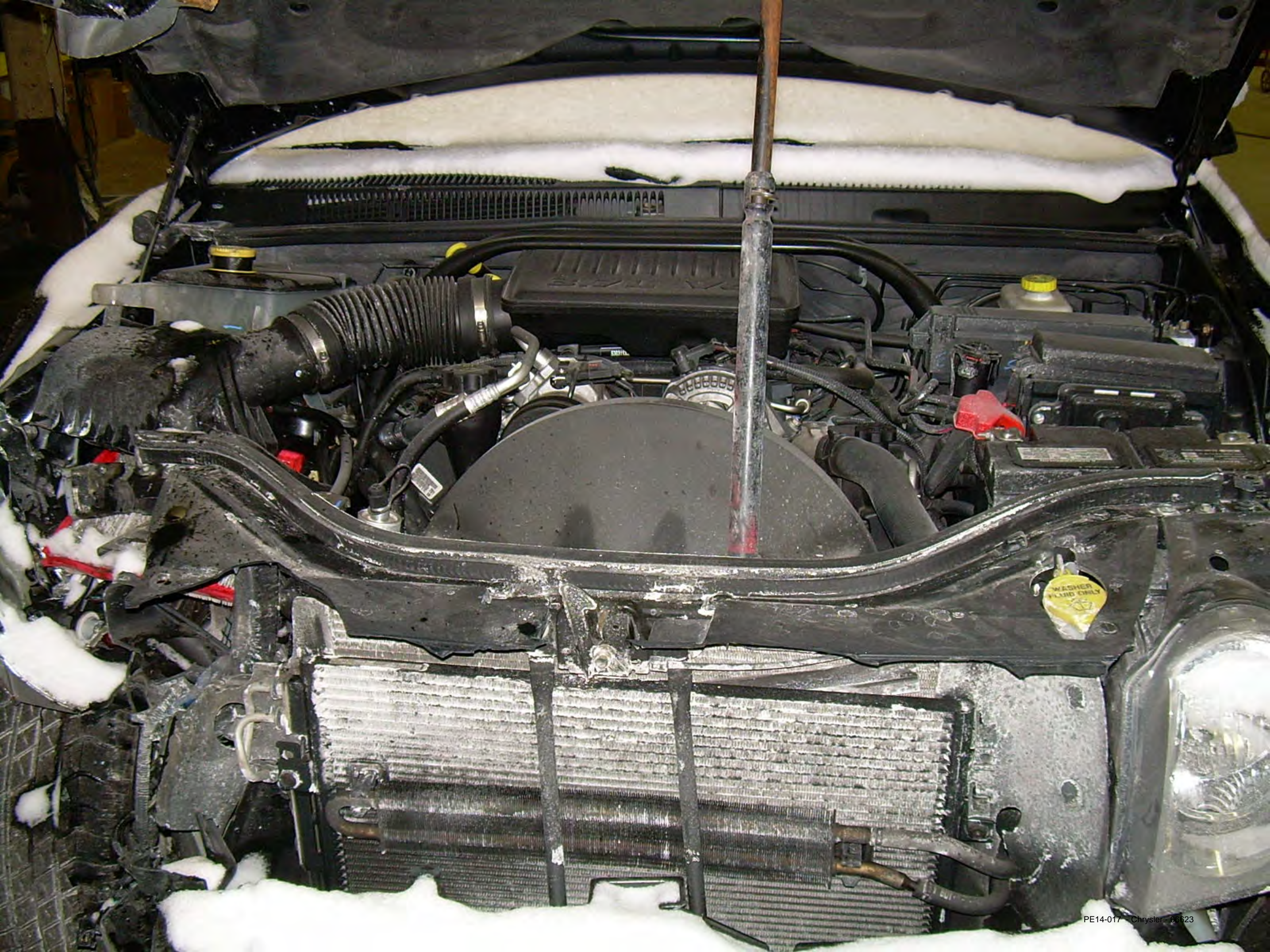


Jeep



LAREDO

















Hardware Version: 02.00.00  
 Part Number: 02.00.00

Software Version: 0a.E3.01  
 Country Code: USA

Data Display



Functions

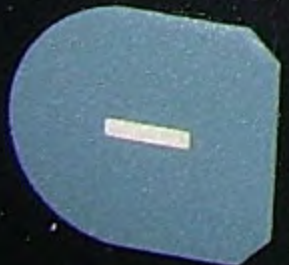
More Options

View DTCs

Active: 1

Stored: 0

Pending: 0





Back

2005

ORC

7.03



Code	Status	Description
U0171	Active	Lost Communication w/ Up-Front Right Satellite Acceleration Sensor

Tech  
Tips

Toggle



ENTER

BACK

SHIFT

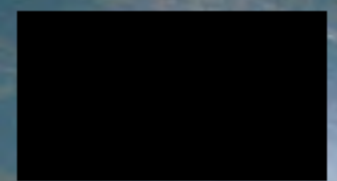
- +



Back

2005 WK

EGT



Hardware Version: 00.B0  
Part Number: 56048195A7

Data Display



View Optics

View DTCs

Active: 0

Stored: 0

Pending: 0



Back

2005 WVE

EQM View

Controller Name	...	...	...	...	...	...	...	...	Show Shortcuts
TCM	Transmission Control Module								Sus
CCN	Instrument Cluster/Cabin Comp...								
EOM	Electronic Overhead								CAN B
FCMCGW	Central Gateway								CAN B
OCM	Occupant Classification	<input checked="" type="checkbox"/>				3			DIAG CAN C
ORC	Occupant Restraint	<input checked="" type="checkbox"/>							CAN B
RADIO	Radio	<input checked="" type="checkbox"/>				1			CAN B
SCM	Steering Column	<input checked="" type="checkbox"/>				0			CAN B
		<input checked="" type="checkbox"/>				0			CAN B

ENTER

BACK

SHIFT

←

← BACK

↑ SHIFT

- +







PXF536

RF

847  
673  
7600  
X1

















































Jeep















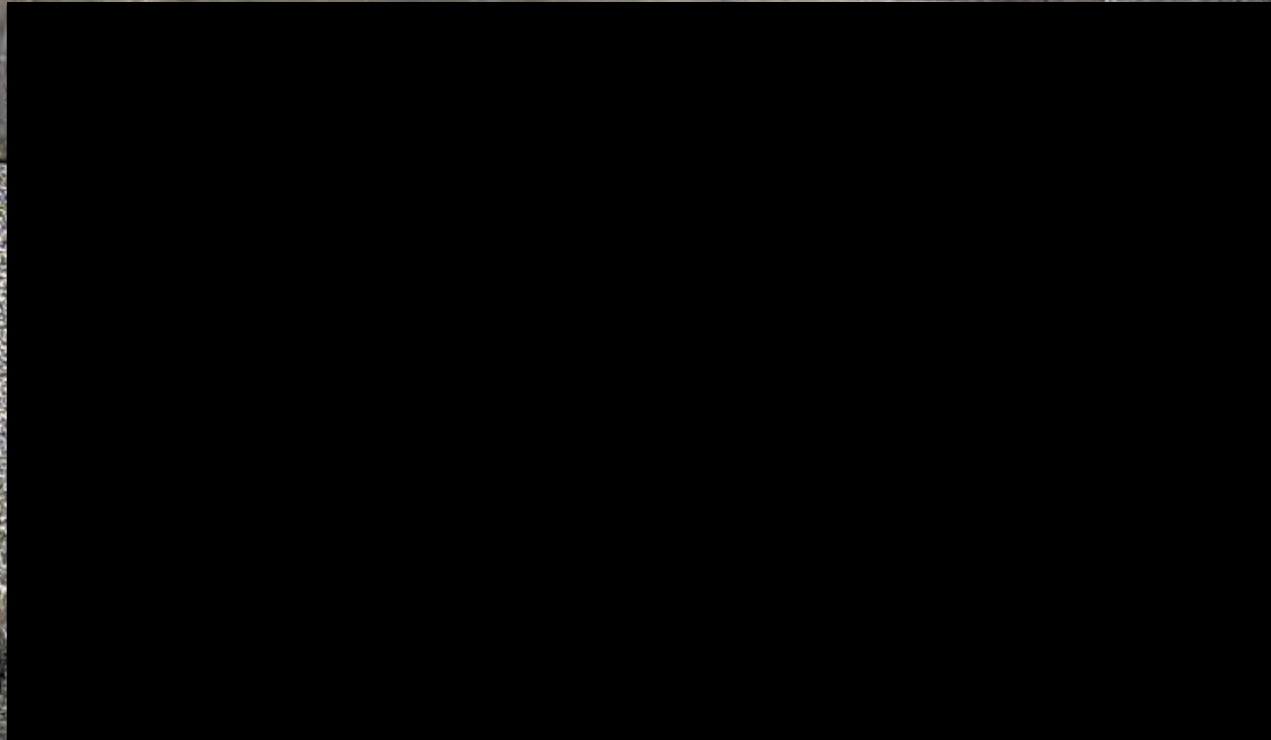








Jeep



LAREDO



7599MM LB

TIRES

33 PSI COLD

TIRES

33 PSI COLD



THIS VEHICLE CONFORMS TO ALL APPLICABLE FEDERAL MOTOR VEHICLE SAFETY AND LABEL PREVENTION STANDARDS IN EFFECT ON THE DATE OF MANUFACTURE SHOWN ABOVE.  
VIN: 1J4GR4BK7500 [REDACTED] PAINT: PRP  
MPN [REDACTED]  
HW-0002510 001111













**WARNING**  
DO NOT STAND UP  
OR REAR SEAT  
PASSENGERS  
WHEN THE VEHICLE  
IS STOPPED AT A  
RED LIGHT OR  
STOPPING SHORTLY  
BEFORE A STOP  
OR STOPPING  
WHEN THE VEHICLE  
IS STOPPED AT A  
RED LIGHT OR  
STOPPING SHORTLY  
BEFORE A STOP

**WARNING**  
DO NOT STAND UP  
OR REAR SEAT  
PASSENGERS  
WHEN THE VEHICLE  
IS STOPPED AT A  
RED LIGHT OR  
STOPPING SHORTLY  
BEFORE A STOP  
OR STOPPING  
WHEN THE VEHICLE  
IS STOPPED AT A  
RED LIGHT OR  
STOPPING SHORTLY  
BEFORE A STOP

**WARNING**  
DO NOT STAND UP  
OR REAR SEAT  
PASSENGERS  
WHEN THE VEHICLE  
IS STOPPED AT A  
RED LIGHT OR  
STOPPING SHORTLY  
BEFORE A STOP  
OR STOPPING  
WHEN THE VEHICLE  
IS STOPPED AT A  
RED LIGHT OR  
STOPPING SHORTLY  
BEFORE A STOP

DO NOT STAND UP  
OR REAR SEAT  
PASSENGERS  
WHEN THE VEHICLE  
IS STOPPED AT A  
RED LIGHT OR  
STOPPING SHORTLY  
BEFORE A STOP  
OR STOPPING  
WHEN THE VEHICLE  
IS STOPPED AT A  
RED LIGHT OR  
STOPPING SHORTLY  
BEFORE A STOP









**WARNING**  
ATTENCIÓN  
Evite mirar directamente al sol o a la luz brillante. Esto puede dañar sus ojos y causar lesiones. Evite conducir con los ojos cansados o con la fatiga. Evite conducir con los ojos cansados o con la fatiga. Evite conducir con los ojos cansados o con la fatiga.



















7599MM LB

TIRES

33 PSI COLD

TIRES

33 PSI COLD



THIS VEHICLE CONFORMS TO ALL APPLICABLE FEDERAL MOTOR VEHICLE SAFETY AND LABEL PREVENTION STANDARDS IN EFFECT ON THE DATE OF MANUFACTURE SHOWN ABOVE.  
VIN: 1J4GR4BK7500 [REDACTED] PAINT: DR  
MPN  
HW-0002510 001111













**WARNING**  
DO NOT STAND UP  
ON SEAT  
DO NOT REAR END  
SEAT  
DO NOT REAR END  
SEAT  
DO NOT REAR END  
SEAT

**WARNING**  
DO NOT STAND UP  
ON SEAT  
DO NOT REAR END  
SEAT  
DO NOT REAR END  
SEAT

**WARNING**  
DO NOT STAND UP  
ON SEAT  
DO NOT REAR END  
SEAT  
DO NOT REAR END  
SEAT

DO NOT STAND UP  
ON SEAT  
DO NOT REAR END  
SEAT  
DO NOT REAR END  
SEAT





XSPORT  
FITNESS





**WARNING**  
ATTENCIÓN  
Evite mirar directamente al sol a través del espejo retrovisor o el parabrisas. Esto puede causar lesiones graves en los ojos.  
Evite mirar directamente al sol a través del espejo retrovisor o el parabrisas. Esto puede causar lesiones graves en los ojos.  
Evite mirar directamente al sol a través del espejo retrovisor o el parabrisas. Esto puede causar lesiones graves en los ojos.  
Evite mirar directamente al sol a través del espejo retrovisor o el parabrisas. Esto puede causar lesiones graves en los ojos.





XSPORT

PE14-017 - Chrysler - 06665











