

INFORMATION Redacted PURSUANT TO THE FREEDOM OF INFORMATION ACT (FOIA), 5 U.S.C. 552(B)(6)







SHERIFF
POLICE

761















RAM 3500
LONE STAR

TURBO DIESEL









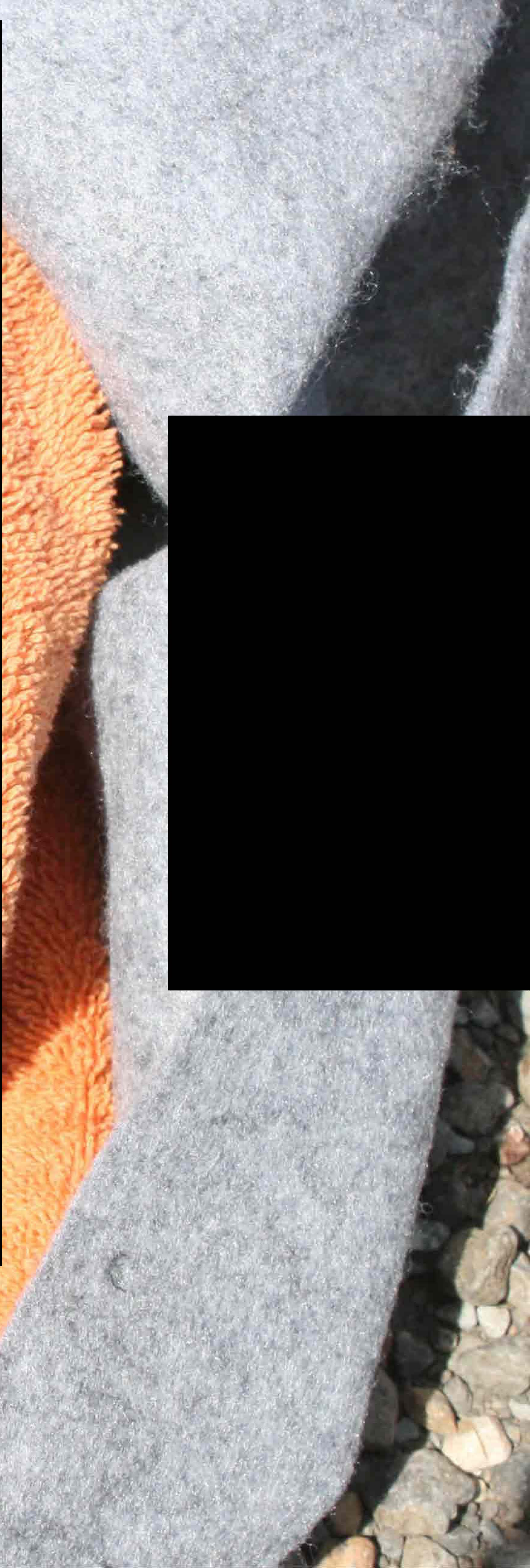














Cleaning & Excavation
P.O. Box 764 Cell (214) 693-3667
Westmore TX 75485 Fax (972) 924-4516

HEAVY DUTY



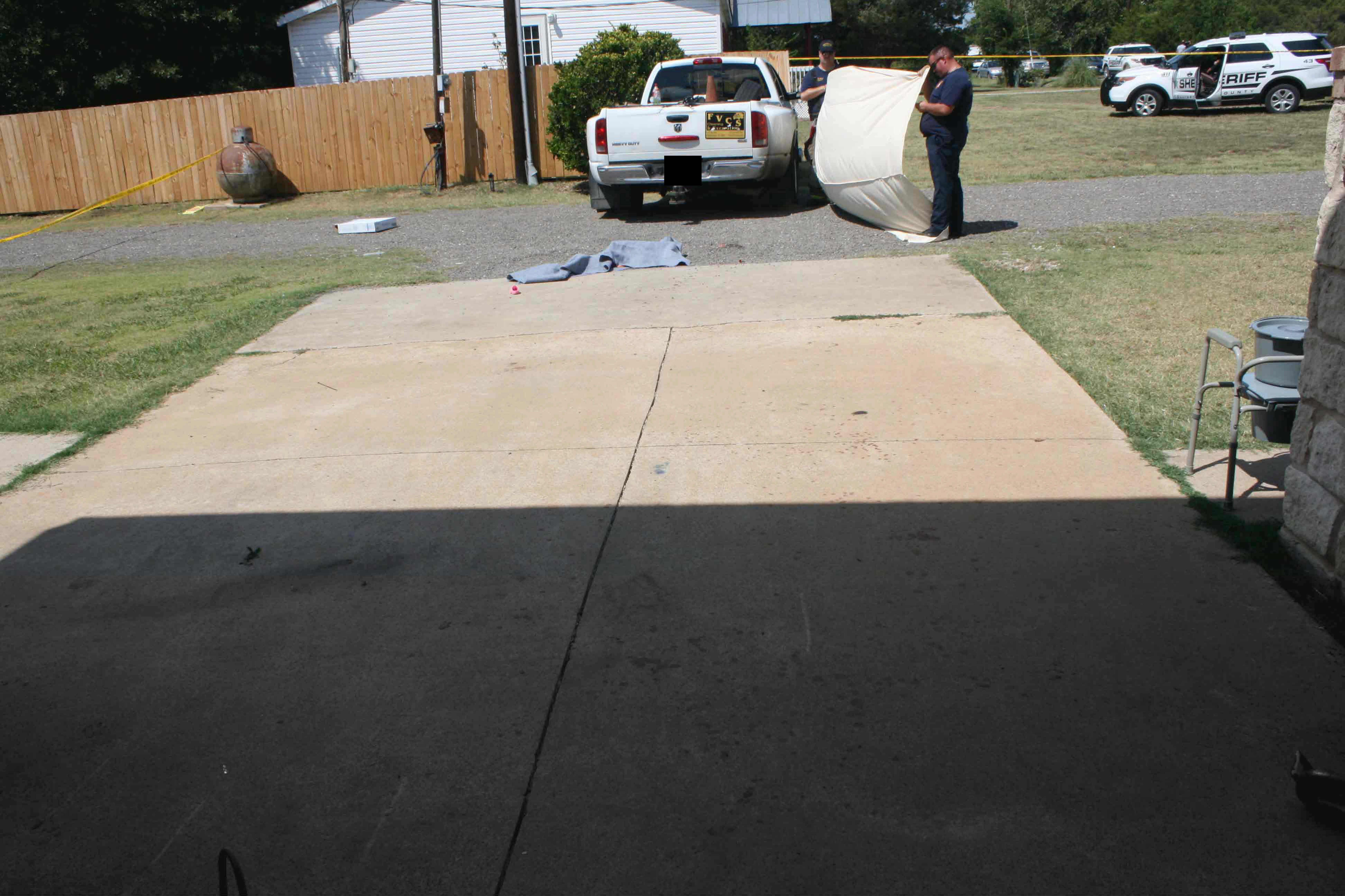


HEAVY DUTY













FVCS
Cleaning
1000 S. 10th St. #100
Tulsa, OK 74106

RAMBLER DUTY

White box on the gravel area.

Blue tarp on the gravel area.

Small red object on the concrete.

Blue mark on the concrete.

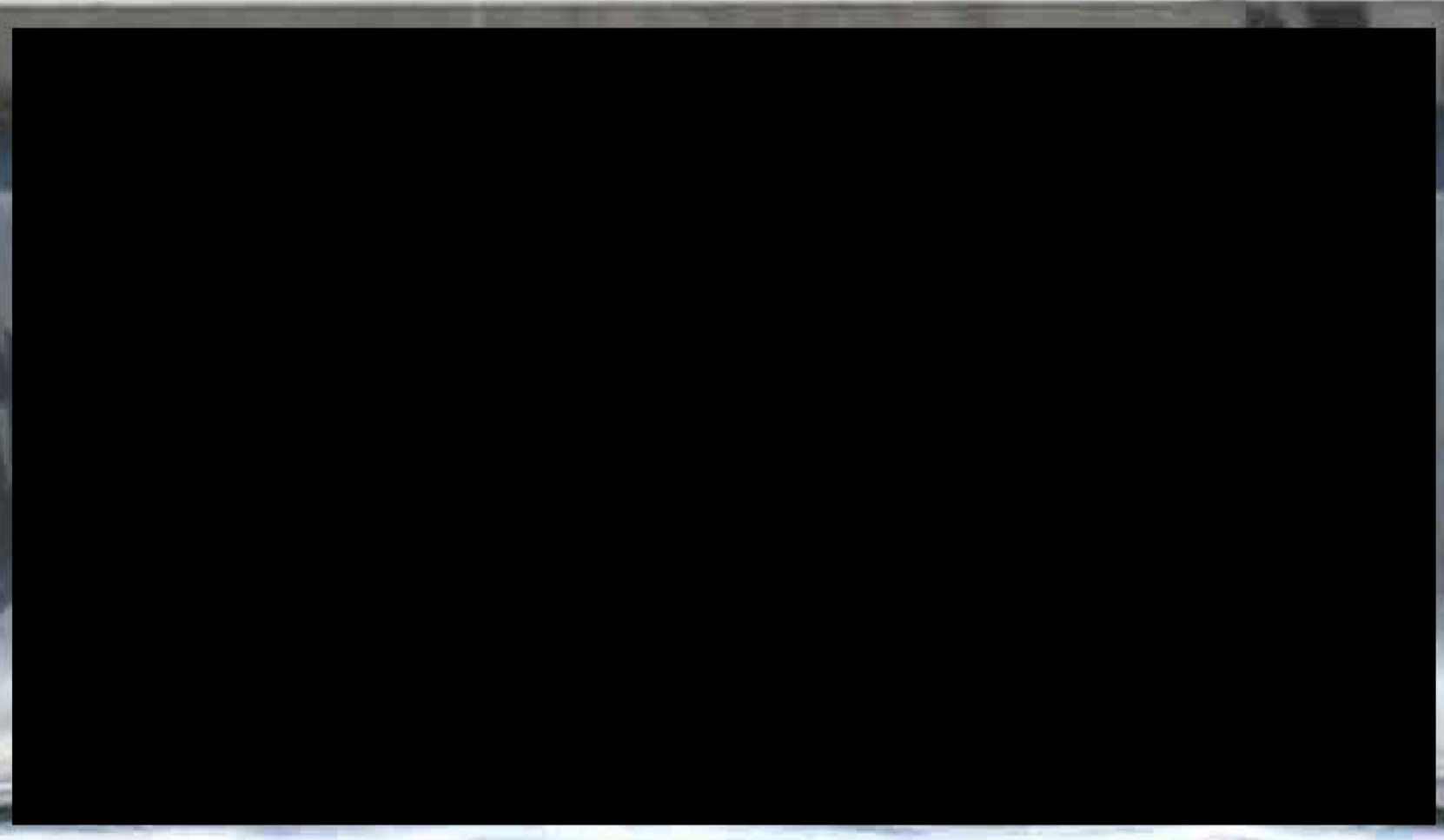
Small dark mark on the concrete.







HEAVY DUTY



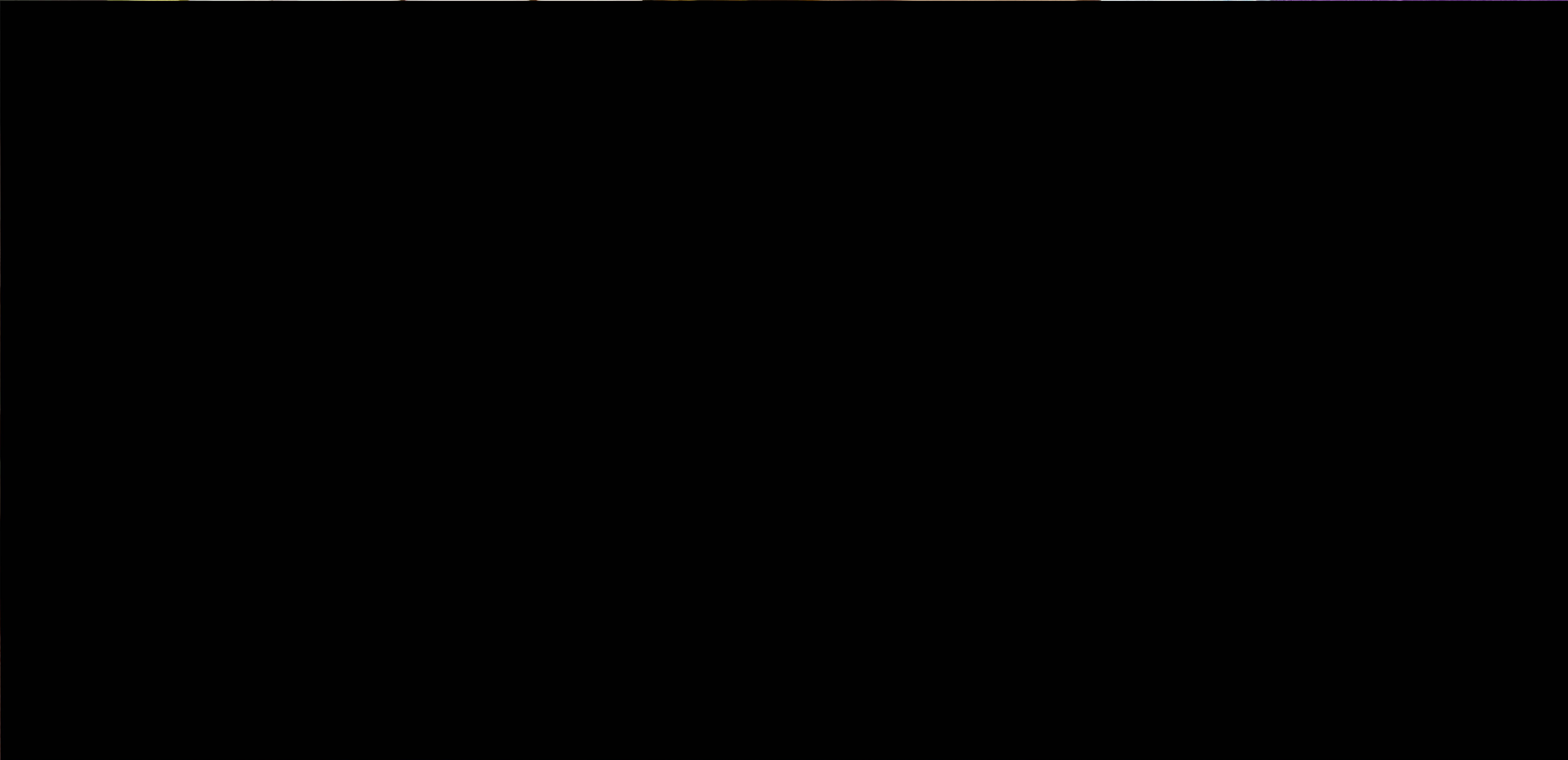
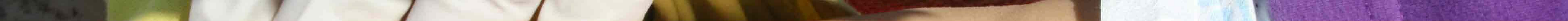


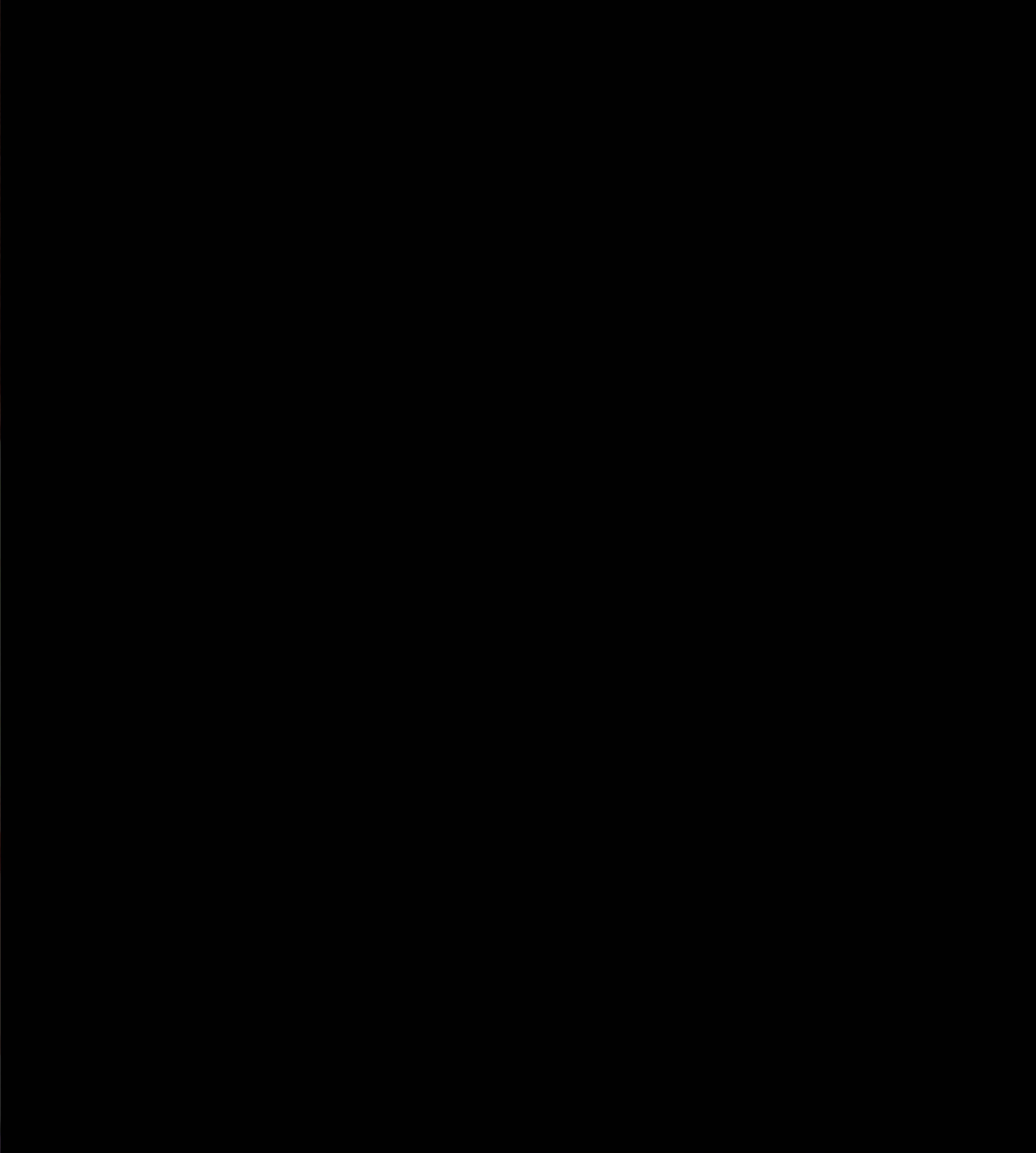














FVCS
Cleaning
& Excavation
P.O. Box 784 Houston, TX 77288
Tel: (281) 893-7867 Fax: (281) 894-4318

HEAVY DUTY





PE14-013

CHRYSLER

8-11-2014

ENCLOSURE 10

Assessment PUBLIC

Assessment 1

Assessment 1
QEC Ram Truck Clutch Actuation Returns

Part	Replacement Part number	VIN	Vehicle Build Date	Vehicle	Mileage	Reason For Replacement	Condition of MC Shaft	Region
1	55366325AF		3/15/2006	2006 Ram 2500	330575	Leaks	Shiny and clean - spring works	Dallas
2	55366325AF		9/28/2010	2011 Ram	85600	Unclassified-over the counter part sale out of warranty	Shiny and clean - spring works	Denver
3	55366325AF		4/15/2011	2011 Ram	21699	Unclassified (Clutch MC, release lever, release bearing, pressure plate and disc all replaced)	Shiny and clean - spring works	Washington
4	55366325AF		5/18/2005	2005 Ram	170000	65 Leaks	Shiny and clean - spring works	Dallas
5	55366325AF		9/21/2010	2011 Ram	89110	65 Leaks	Shiny and clean - spring works	Dallas
6	55366325AF		1/29/2013	2013 Ram	8801	65 Leaks	Shiny and clean - spring works	LA
7	55366325AF		9/20/2007	2008 Ram 4500	224842	X2 split, cut or torn (missing slave cylinder output rod - unit replaced 1 mile after clutch was replaced))	Shiny and clean - spring works	Dallas
8	55398917AC		5/15/2012	2012 Ram	30871	Unclassified (Customer stated something dragging on clutch pedal)	Shiny and clean - spring works	Washington
9	55366325AF		10/10/2006	2007 Ram	268389	65 Leaks	Shiny and clean - spring works	Detroit
10	55366325AF		4/24/2013	2013 Ram	8887	Unclassified	Shiny and clean - spring works	Washington
11	55366325AF		5/14/2012	2012 Ram	24273	Damaged	Shiny with some grease - spring works	Phoenix
12	55366325AF		8/14/2006	2007 Ram	167851	Damaged (tube and slave cylinder missing)	Shiny and clean - spring works	Denver
13	55366325AF		10/19/2012	2012 Ram	5805	65 Leaks	Shiny and clean - spring works	Dallas
14	55398917AC		10/3/11	2012 Ram	31863	68 Noisy	Shiny and clean - spring works	New York

Assessment 1
QEC Ram Truck Clutch Actuation Returns

15	55366325AF		9/1/2005	2006 Ram	206620	65 Leaks	Shiny and clean - spring works	Orlando
16	55366325AF		11/1/2012	2012 Ram	22421	65 Leaks	Shiny and clean - spring works	Detroit
17	55366325AF		4/20/2012	2012 Ram	10617	X2 Split, cut, or torn. Customer states when depressing the clutch it crunches install SOP slave	Shiny and clean - springs works	New York
18	55366325AF		6/2/2006	2006 Ram 3500	245181	Leaks	Shiny and clean - springs works	Dallas
19	55366325AF		7/17/2006	2007 Ram	170339	Leaks	Shiny and clean - springs works	Orlando
20	55366325AF		5/8/2013	2013 Ram	4793	Improperly installed. Slave output rod detached.	Shiny and clean - springs works	Phoenix
21	55398917AC		2/12/2009	2009 Ram	81036	Leaks	Shiny and clean - springs works	Dallas
22	55366325AF		2/8/2007	2007 Ram	202831	Damaged	Shiny and clean - springs works	Denver
23	55366325AF		11/16/2007	2008 Ram 3500	196003	Leaks	Shiny and clean - springs works	Dallas
24	55398917AC		8/25/2010	2011 Ram	68462	Leaks	Shiny and clean - springs works	Dallas
25	55366325AF		2/19/2007	2007 Ram	279937	Damaged	Shiny and clean - springs works	Dallas
26	55366325AF		1/18/2012	2012 Ram	23706	Unclassified - looks unused. Shipping strap on slave cylinder still intact.	Shiny and clean - springs works	Washington
27	55398917AC		7/26/2011	2012 Ram	92061	Leaks	Shiny and clean - springs works	Dallas
28	55366325AF		12/20/2012	2012 Ram	15020	Damaged	Shiny and clean - springs works	New York
29	55366325AF		10/17/2012	2012 Ram	21455	Unclassified - mounting plate separate in box	Shiny and clean - springs works	Denver
30	55398917AC		10/12/2013	2014 Ram 3500	11703	Leaks	Shiny and clean - springs works	Denver
31	55366325AF		4/20/2012	2012 Ram	28242	Leaks	Shiny and clean - springs works	Denver
32	55366325AF				136439	Unclassified	Shiny and clean - springs work	Denver
33	55366325AF		4/18/2013	2013 Ram 2500	7927	X2 Split, cut or torn - no obvious issue	Shiny and clean - springs work	Phoenix

Assessment 1
QEC Ram Truck Clutch Actuation Returns

34	55366325AF		5/11/2006	2006 Ram 3500	278028	Leaks	Shiny and clean - springs are broken	Dallas
35	55366325AF				136439	Unclassified	Shiny and clean - springs work	Denver
36	55366325AF		6/6/2013	2013 Ram 3500	10397	Leaks	Shiny and clean - springs work	Chicago
37	55366325AF		10/2/2012	2012 Ram	4203	Leaks	Shiny and clean - springs work	Orlando
38	55366325AF		8/24/2006	2007 Ram	163019	Does not work	Shiny and clean - springs work	Dallas
39	55366325AF		5/8/2006	2006 Ram 3500	181344	Leaks	Shiny and clean - springs work	Dallas
40	55398917AC		12/23/2011	2012 Ram	84616	Unclassified - tape on m/c clip	Shiny and clean - springs work	Denver
41	55398917AC		6/27/2011	2011 Ram	64629	Leaks - slave cylinder output shaft and reservoir cap are missing	Shiny and clean - springs work	Dallas
42	55366325AF		6/26/2012	2012 Ram	28544	Damaged	Shiny and clean - springs work	Phoenix
43	55366325AF		9/5/2006	2007 Ram	189020	Leaks	Shiny and clean - springs work	New York
44	55398917AC		11/4/2010	2011 Ram	89114	Damaged	Shiny and clean - springs work	Detroit
45	55366325AF		6/1/2012	2012 Ram	27762	broken or cracked - slave cylinder output rod and switch are missing	shaft is shiny - switch is missing	Washington
46	55366325AF		11/8/2012	2012 Ram	13319	Leaks	Shiny and clean - springs work	Dallas
47	55366325AF		2/2/2007	2007 Ram	113957	Unclassified - note switch was removed because the gasket is on the eye side of the switch	Shiny and clean - springs work	Washington
48	55366325AF		7/17/2006	2007 Ram	170515	Leaks	Shiny and clean - springs work	Orlando
49	55366325AF		6/28/2012	2012 Ram	108123	Leaks	Shiny and clean - springs work	Denver
50	55366325AF		5/23/2005	2005 Ram	140005	27 Damaged - no obvious issue	Shiny and clean - springs work	Dallas
51	55366325AF		5/20/2013	2013 Ram 2500	23030	Unclassified	Shiny and clean - springs work	Detroit
52	55366325AF		8/29/2005	2006 Ram	129786	Unclassified	Shiny and clean - springs work	Los Angeles

Assessment 1
QEC Ram Truck Clutch Actuation Returns

53	55366325AF		9/7/2005	2006 Ram 3500	213797	Leaks	Shiny and clean - springs work	Orlando
54	55366325AF		2/15/2013	2013 Ram 2500	5063	Unclassified	Shiny and clean - springs work	Detroit
55	55366325AF		3/9/2013	2013 Ram 2500	6807	Damaged	Shiny and clean - springs work	Washington
56	55366325AF		11/30/2010	2011 Ram	106228	Slips	Shiny and clean - springs work	Dallas
57	55398917AC		8/22/2012	2012 Ram	27687	Leaks	Shiny and clean - springs work	Detroit
58	55366325AF		11/11/2004	2005 Ram	118976	Leaks	Shaft shiny - springs broken	Dallas

Max Mileage = 330575
Average Switch Mileage = 99299

PE14-013

CHRYSLER

8-11-2014

ENCLOSURE 10

Assessment PUBLIC

Assessment 2

Myr Group Ram truck clutch interlock switch inspection

- Instructions: 1) Make sure parking brake is on. 2) Place the shifter into NEUTRAL.
 3) MAKE SURE NO ONE IS STANDING IN FRONT OF OR BEHIND THE VEHICLE.
 4) Do not depress the clutch pedal. Turn the key to ON (or push the start button) and note the results.
 5) With the key off, depress the clutch pedal. Please note any clicking sounds heard from under the dash.
 6) If the inspector marks YES in any column, contact Chrysler immediately at the number below.
 We will arrange to replace the switches. It is important to tag and save any switch removed from the trucks.

Part	VIN	Model Year / Vehicle	Mileage	Does the engine start? Yes/No	Depress pedal - any clicking sounds?
1		2013	12904	NO	NO
2		2014	3452	NO	NO
3		2012	14222	NO	NO
4		2013	11439	NO	NO
5		2013	12149	NO	NO
6		2012	15302	NO	NO
7					
8					
9					
10					
11					
12					
13					
14					
15					
16					

PE14-013

CHRYSLER

8-11-2014

ENCLOSURE 13

Clutch Interlockd Switch Part
Number Summary

PE14-013 Clutch Interlock Switch Assembly Part Number Summary

Vehicles	Part Name	Part Number	Model Years	Manufacturer
Jeep Cherokee Dodge Dakota Dodge Ram 1500 Dodge Ram 2500 Dodge Ram 3500 Dodge Viper Ram 4500 Ram 5500	Clutch Interlock Switch Assembly	53007944AB	1998 - 2014	FTE automotive USA Inc.

PE14-013

CHRYSLER

8-11-2014

ENCLOSURE 13

Service Part Number and
Supplier Contact

PE14-013 Service Parts for Subject and Peer Vehicle Subject Component

Part Name	Part Number	Supplier Name	Supplier Address	Contact Name	Title	Phone
Clutch Interlock Switch Assembly	53007944AB	FTE automotive USA Inc.	4000 Pinnacle Ct Auburn Hills, MI 48326	Les Branum	Director of Quality	248-340-1226