

DP14-004

CHRYSLER

9/15/2014

LEGALS AND CUSTOM

COMPLAINTS PUBLIC

ENTERPRISE

PHOTOS

























JMC6

Jump Box

Twining Drive

KEY TRAK









DODGE

JOURNEY
SUV

























The vehicle aids include features - some
features controlled by the manufacturer:
* MOVED DISPLAY
* MULTITOUCH CAMERA DISPLAY
* RTD* (regenerative)

Recharge the car's battery before driving
Open rear hatch if battery drain occurs,
check in *Owner's Manual* for further details.

Information sticker on the car door panel, featuring a logo and several lines of text.

NEXT
PM
DUE

NEXT
PM
DUE





PUSH TO
RELEASE



DO NOT ATTEMPT TO REMOVE
THIS HANDLE FROM THE DOOR
IF THE HANDLE IS DAMAGED
OR MISSING, CONTACT
A QUALIFIED SERVICE CENTER
FOR REPAIR.

SAFETY INFORMATION
READ THE INSTRUCTIONS
FOR THE SEATBELT AND
AIR BAGS CAREFULLY.
FOR MORE INFORMATION,
SEE THE OWNER'S MANUAL
OR VISIT US AT
www.ford.com



This vehicle may contain electronic devices installed by the manufacturer:

- VIDEO DISPLAY
- NAVIGATION/CAMERA DISPLAY
- H.F.D. (Hazardous Fluid Discharge)

Remove from vehicle before recycling. Dispose of properly. For more information, please contact your local recycling center or visit www.epa.gov.



TINI





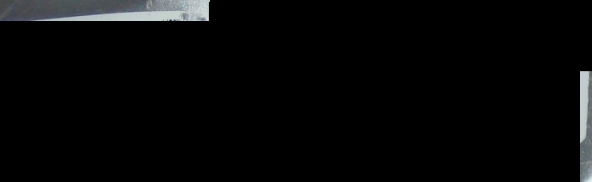








LL
GU
WT
MS
WT
MS



**NEXT
PM
DUE**

Form 3107 599











PEER
DANGER
AUTOMATIC
EQUIPMENT

























JOURNEY



















PUSH TO RELEASE

GAS

GAS









READ TO USE
1. Pull down the visor.
2. Turn the visor to the desired position.
3. The visor will automatically return to its original position when released.













M7

IUV
15M
dw u



















PUSH TO
RELEASE





This vehicle may include factory-installed
devices installed by the manufacturer:

- VIDEO DISPLAY
- NAVIGATION/CAMERA DISPLAY
- H.T.O. www.hydrocarbon.com

Please do not use before use
Your name: _____
recycle by _____















EXIT

JOURNEY





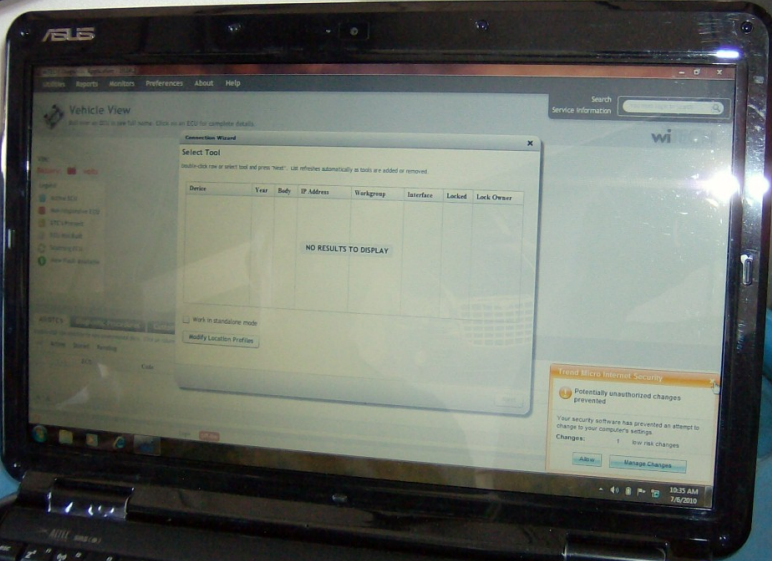












ASUS

Home Reports Alerts Preferences About Help

Vehicle View

Click on an ECU to see full details. Click on an ECU for complete details.

Search Service Information

wi

Connection Wizard

Select Tool

Double-click row or select tool and press "Next". List refreshes automatically as tools are added or removed.

| Device | Year | Body | IP Address | Workgroup | Interface | Locked | Lock Owner |
|--------|------|------|------------|-----------|-----------|--------|------------|
|--------|------|------|------------|-----------|-----------|--------|------------|

NO RESULTS TO DISPLAY

Work in standalone mode
 Modify Location Profiles

Fraud Micro Internet Security

Potentially unauthorized changes prevented

Your security software has prevented an attempt to change your computer's settings.

Changes: 1 low risk changes

[Allow](#) [Manage Changes](#)

10:25 AM 7/6/2010















Remove this label before vehicle disposal.
- VIDEO DISPLAY
- NAVIGATION/CAMERA DISPLAY
- H.T.D. High Temperature Dielectric

Remove this label before vehicle disposal.
Upon removal of labels, proper cause,
recycle or dispose as hazardous waste.













JURON

09/11/2014



09/18/2014



09/11/2014



09/11/2014





09/18/2014



09/18/2014



INTERNATIONAL
ALL CITY
AUTO BODY
TOWING
302-768-1111

09/18/2014



09/18/2014



09/18/2014



09/18/2014



09/11/2014



09/18/2014

VSDA
LEAD

AT121749

DNI

09/11/2014



09/11/2014

XTRA
LEASE

09/11/2014



09/11/2014



09/11/2014



09/11/2014



09/11/2014