

DP14-004

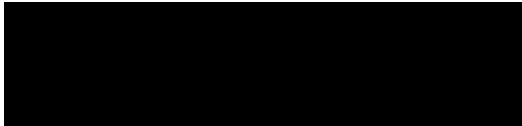
CHRYSLER

9/15/2014

LEGALS AND CUST
COMPLANTS

PHOTOS

Defense Expert I inspection
photos 1.28.2014

 v Chrysler

1_28_14 (Nikon)

Case Name: [REDACTED] Chrysler Group

Our File No.: H13121

2007 Dodge Ram

Date of Inspection: January 28, 2014

Location: [REDACTED]



















®

P1221219











2022023





10072023

2022023

3

2022028































































































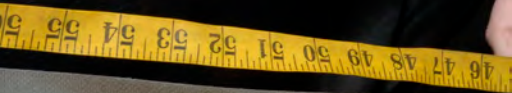






















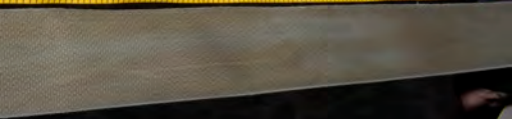








































24

25

26

27

28

29

30

31



27 28 29 30 31 32 33 34 35



30

31

32

33

34

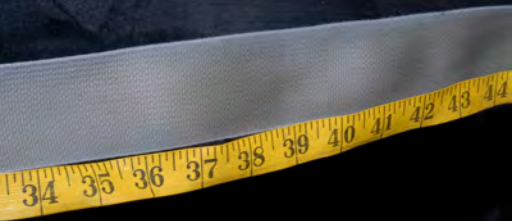
35

36

37

38





34

35

36

37

38

39

40

41

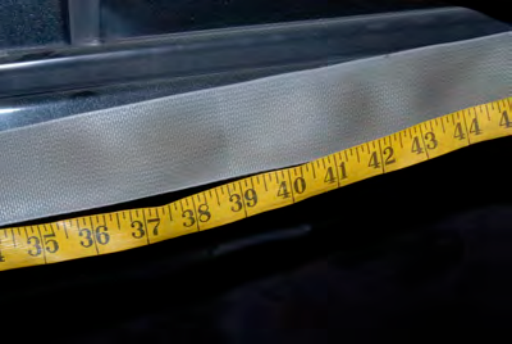
42

43

44











36

37

38

39

40

41

42



36

37

38

39

40

41

42



36

37

38

39

40

41

42



















48 49 50 51 52 53 54





A close-up photograph of a yellow measuring tape against a grey metal surface. The tape shows markings from 49 to 58 inches. The numbers 49, 50, 51, 52, 53, 54, 55, 56, 57, and 58 are printed in black on the yellow tape. The metal surface has a fine, vertical ribbed texture. The background is dark and out of focus.











1 55 56 57 58 59 60 61 62 63 64 65 66 67 68





58

59

60

61

62

63

64

65

66

67

68

69

70

















64

65

66

67

68

69

70







A yellow measuring tape is stretched across a dark, textured surface. The tape displays measurements in inches, with major markings every inch and minor markings every millimeter. The visible numbers on the tape are 74, 75, 76, 77, 78, 79, 80, 81, 82, 83, and 84. The tape is slightly curved, and the background is a dark, possibly fabric or plastic, material.





81

82

83

84

85

86

87

88

89

231
232
233
234
235







A close-up photograph of a hand holding a grey plastic car seatbelt buckle. The buckle has a prominent red rectangular button on its front face with the word "PRESS" printed vertically in white capital letters. The buckle is being held against a grey, textured fabric background, likely a car seat. The lighting is bright, highlighting the textures of the plastic and fabric.

PRESS

















































WARNING
DO NOT RECLINE SEAT BACK
WHILE DRIVING
OR WHILE THE VEHICLE IS IN
MOTION.
RECLINING THE SEAT BACK
WHILE DRIVING OR WHILE THE
VEHICLE IS IN MOTION CAN
CAUSE SERIOUS INJURY OR
DEATH.































MFD BY DAIMLERCHRYSLER CORPORATION DATE OF MFG 2-07 GVW 3040 KG (66700 LB)

GVW FRONT	WITH TIRES	82MS AT	COLJ
1679 KG (3700 LB)	P275/60R20	28X9.0	240 KPA (35 PSI)
GVW REAR	WITH TIRES	82MS AT	COLJ
1776 KG (3900 LB)	P275/60R20	28X9.0	240 KPA (35 PSI)

THIS VEHICLE CONFORMS TO ALL APPLICABLE FEDERAL MOTOR VEHICLE SAFETY AND THEFT PREVENTION REQUIREMENTS IN EFFECT ON THE DATE OF MANUFACTURE SHOWN ABOVE.

VIN: 1D7H [REDACTED] TYPE: TRUCK [REDACTED]



PK: 006501 736AA INT:010































▲ WARNING

EVEN WITH ADVANCED AIR BAGS



www.230aa

- CHILDREN CAN BE KILLED OR SERIOUSLY INJURED BY THE AIR BAG.
- THE **BACK SEAT** IS THE SAFEST PLACE FOR CHILDREN.
- NEVER PUT A REAR-FACING CHILD SEAT IN THE FRONT.
- ALWAYS USE SEAT BELTS AND CHILD RESTRAINTS.
- SEE OWNER'S MANUAL FOR MORE INFORMATION ABOUT AIR BAGS.



Hayolinc 

WEST GUMPHREYS LTD

1000
1000
1000
1000
1000



Haveline



WATER RESISTANT TURTLE

PAM Trace

1. VIN: 1G1ZC5E85G4100000
2. Make: GM
3. Model: Malibu
4. Year: 2007
5. Color: Silver
6. License: GA
7. State: GA
8. City: Atlanta
9. Country: USA
10. Date: 10/10/2007
11. Time: 10:10:10
12. Location: Atlanta, GA
13. Status: Active
14. Owner: John Doe
15. Contact: 404-555-1234
16. Address: 123 Main St, Atlanta, GA 30301
17. Email: john.doe@example.com
18. Phone: 404-555-1234
19. Fax: 404-555-1234
20. Website: www.example.com

P&M Texaco

MILEAGE 130551

DATE 11-6-72

OK

ADDED OR
REPLACED

1. LUBE CHASSIS

OK

2. CHANGE OIL

Castrol

10W30

7.0

3. CHANGE OIL FILTER

OK

4. AIR FILTER

OK

5. DIFFERENTIAL FLUID

OK

6. TRANSMISSION
TRANSFER CASE FLUID

OK

7. STEERING FLUID

OK

8. WINDSHIELD
WASHER RESERVOIR

OK

9. CHECK TIRES

35

35

10. BRAKE FLUID











2007 WARRANTY INFORMATION

DODGE
RAM TRUCK



2007 OWNER'S MANUAL





See **OPERATING YOUR INSTRUMENT PANEL** for more information.

For manual station selection, push the **PRESET** button. Press and hold the **PRESET** button for 2 seconds. The display will show the station number and the frequency. Press the **PRESET** button again to store the station. Press the **PRESET** button again to select the station. Press the **PRESET** button again to select the station. Press the **PRESET** button again to select the station.

Every time a preset button is used, a corresponding station number will display.

Presets 1 - 6 (Radio Model)

These buttons turn the Radio to the stations that you stored in preset button memory (12 AM, 12 PM, and 12 buttons of approved stations).

Operation Instructions - CD Mode

NOTE: The ignition switch must be in the "ON" position to operate the radio.

Inserting The Compact Disc (Single CD Player)

Gently insert one CD into the CD player with the label facing up. The CD will automatically be pushed into the CD Player and the CD icon will show on the radio display.

If the volume control is OFF, the radio will automatically turn on and begin to play. The display will show the station number and play time in minutes and seconds. The radio will begin at the start of track one.

1. Turn the radio on by pressing the power button.

2. Press the **CD** button. The CD icon will appear on the radio display.

3. Press the **CD** button again. The CD icon will disappear from the radio display.

4. Press the **CD** button again. The CD icon will appear on the radio display.

5. Press the **CD** button again. The CD icon will disappear from the radio display.

6. Press the **CD** button again. The CD icon will appear on the radio display.

SWIFT CD Mode
Press and hold the **SWIFT** button for 2 seconds. The display will begin to show the station number and the frequency.

RDSNET Radio Model

Press the **RDSNET** button. The display will show the station number and the frequency.

Press the **RDSNET** button again. The display will show the station number and the frequency.

Press and hold the **RDSNET** button for 2 seconds. The display will show the station number and the frequency.

Press the **RDSNET** button again. The display will show the station number and the frequency.



CD Mode

Each must be in the CD or DVD player. The display will show the track number and seconds. Press the

...the CD will ...

...the CD will ...

REVERSE (CD Model)

Press and hold the RE (and Reverse) and will begin to run forward until RE or Reverse Mode. Reverse button works in 3 vehicle speeds.

RANDOM Button (Random Play Button) (Auxiliary Mode)

Press this button while the CD is playing (Auxiliary Mode). Random Play. This feature plays the selected tracks in random order to provide a variety of music. change of pace.

Press the SEEK button to move to the selected track.

Press and hold the FF button to fast forward track. Release the FF button to stop the feature. If the CD button is pressed, the track returns to the beginning of the track and be

Press the RND button a second time to stop.

...the CD will ...

...the CD will ...

Instructions - Hands Free Phone - 2

"HANDS FREE PHONE" (Auxiliary Owner's Manual)

Instructions - Satellite Radio - 2

"Satellite Radio" section of the Owner's Manual



2007 MODEL YEAR RAM 1500 LONESTAR EDITION

FINANCIAL ASSISTANCE AVAILABLE THROUGH
FINANCIAL SERVICES

Base Price: \$28,250

RAM 1500 4x4 QUAD CAB 952

Color: Black
Interior: Cloth
Crew Cab
4x4
2.7L I-4
160HP
2.7L I-4 (160HP) Multi-Point Fuel Injection Engine
28" x 3.2" Maximum Wheel

STANDARD EQUIPMENT - See your dealer's window sticker

ABS
Air Conditioning
Body Side Moldings

Brake Assist
Cruise Control

Daytime Running Lamps
Electric Windows

Interior Trim
Keyless Entry

Power Mirrors
Rear Window Wiper

Side Air Bags
Steering Wheel

Tire Pressure Monitor
Traction Control

Washer/Waxer
Wipers

Wheel Locks
Window Cranks

Anti-Lock Braking System
Body Side Moldings

Cruise Control
Electric Windows

Interior Trim
Keyless Entry

Power Mirrors
Rear Window Wiper

Side Air Bags
Steering Wheel

Tire Pressure Monitor
Traction Control

Washer/Waxer
Wipers

Wheel Locks
Window Cranks

Anti-Lock Braking System
Body Side Moldings

Cruise Control
Electric Windows

Interior Trim
Keyless Entry

Power Mirrors
Rear Window Wiper

Side Air Bags
Steering Wheel

Tire Pressure Monitor
Traction Control

Washer/Waxer
Wipers

Wheel Locks
Window Cranks

Anti-Lock Braking System
Body Side Moldings

Cruise Control
Electric Windows

Interior Trim
Keyless Entry

Power Mirrors
Rear Window Wiper

Side Air Bags
Steering Wheel

Tire Pressure Monitor
Traction Control

Washer/Waxer
Wipers

Wheel Locks
Window Cranks

Optional Package with Larger Wheels
Light-colored Paint
\$400

OPTIONAL EQUIPMENT

Daytime Running Lamps \$400

Front & Rear Power Windows \$400

Front & Rear Power Mirrors \$400

Front & Rear Power Locks \$400

Front & Rear Power Windows \$400

Front & Rear Power Mirrors \$400

Front & Rear Power Locks \$400

Front & Rear Power Windows \$400

Front & Rear Power Mirrors \$400

Front & Rear Power Locks \$400

Front & Rear Power Windows \$400

Front & Rear Power Mirrors \$400

Front & Rear Power Locks \$400

Front & Rear Power Windows \$400

Front & Rear Power Mirrors \$400

Front & Rear Power Locks \$400

Front & Rear Power Windows \$400

Front & Rear Power Mirrors \$400

Front & Rear Power Locks \$400

Front & Rear Power Windows \$400

Front & Rear Power Mirrors \$400

Front & Rear Power Locks \$400

Front & Rear Power Windows \$400

Front & Rear Power Mirrors \$400

Front & Rear Power Locks \$400

Front & Rear Power Windows \$400

Front & Rear Power Mirrors \$400

Front & Rear Power Locks \$400

Front & Rear Power Windows \$400

Front & Rear Power Mirrors \$400

Front & Rear Power Locks \$400

Front & Rear Power Windows \$400

Front & Rear Power Mirrors \$400

Front & Rear Power Locks \$400

Front & Rear Power Windows \$400

Front & Rear Power Mirrors \$400

Front & Rear Power Locks \$400

Front & Rear Power Windows \$400

Front & Rear Power Mirrors \$400

Front & Rear Power Locks \$400

Front & Rear Power Windows \$400

Front & Rear Power Mirrors \$400

Front & Rear Power Locks \$400

Front & Rear Power Windows \$400

INSTANT CASH DISCOUNT \$500

TOTAL BEFORE DISCOUNT \$37,750

Lonestar Package Includes:

20" x 3.2" Maximum Wheel

20" x 3.2" Maximum Wheel

20" x 3.2" Maximum Wheel

20" x 3.2" Maximum Wheel

20" x 3.2" Maximum Wheel

20" x 3.2" Maximum Wheel

20" x 3.2" Maximum Wheel

20" x 3.2" Maximum Wheel

20" x 3.2" Maximum Wheel

20" x 3.2" Maximum Wheel

20" x 3.2" Maximum Wheel

20" x 3.2" Maximum Wheel

TOTAL PRICE: ** \$32,750

** Limited by the dealer's participation and other applicable offers.

WARRANTY COVERAGE

See your dealer for details.

3GE

RAM 1500 LONESTAR

MANUFACTURER'S SUGGESTED RETAIL PRICE OF
MODEL INCLUDING DEALER PREPARATION

Base Price: \$28,250

RAM 1500 SLT QUAD CAB 4X2

Exterior Color: Brilliant Black Crystal Pearl Coat Exterior Paint
Interior Color: Medium Slate Gray Interior Color

Interior: Cloth 40/20/40 Premium Bench Seat
Power 6-Way Driver's Seat
Rear 60/40 Split Folding Seat

Engine: 5.7-Liter HEMI(R) Multi-Displacement Engine

Transmission: Multi-Speed Overdrive Automatic Transmission

STANDARD EQUIPMENT (UNLESS REPLACED BY OPTIONAL EQUIPMENT)

FUNCTIONAL / SAFETY FEATURES

Standard Multi-Stage Front Air Bags**

Wheel Lock Brakes with Rear-Wheel Anti-Lock

Key Key(R) Theft-Deterrent System

Power Rack-and-Pinion Steering

Coil Stabilizer Bar

Amperage Alternator

60-Month Maintenance-Free Battery

Pressure-Intermittent Windshield Wipers

Power-Adjustable Driver's Seat

20-Gallon Fuel Tank

Removable Tailgate
Cloth 40/20/40 Premium

OPTIONAL EQUIPMENT

Cloth 40/20/40 Premium

Power 6-Way Driver's Seat

Rear 60/40 Split Folding Seat

Front Center Seat

Customer Preferred

Quad Cab Lower

P275/60R20 Premium

20" x 9.0" Aluminum

"Lonestar" Badging

SIRIUS(R) Satellite

1-800-4-A-RAM

For More Information

Chrome Sunroof

20" Steel Spare Wheel

3.92 Axle Ratio

Fog Lamps

Rear Sliding Window

Front and Rear Fog Lamps

Multi-Function Power Windows

12-Volt Power Windows

Keyless Entry (K) Theft-Deterrent System
Rear Rack-and-Pinion Steering
Tire Stabilizer Bar
24-Ampere Alternator
600A-ampere Maintenance-Free Battery
Variable Intermittent Windshield Wipers
Power Accessory Delay
20-Gallon Fuel Tank

INTERIOR FEATURES

4-Spoke Steering Wheel
Tilt/Steering Column
Speed Control
Power Windows with Driver's One-Touch-Down Feature
Power Locks
Remote Keyless Entry
Instrument Cluster with Tachometer
Passenger Side Sun Visor w/Mirror
Overhead Console with Trip Computer
AM/FM Stereo with CD Player
4 Speakers
YES Essentials (R) Stain/Odor Resistant Seat Fabric
40/20/40 Split Bench Seat
Rear Folding Seat
Rear Underseat Compartment Storage
Passenger Assist Handle
12-Volt Auxiliary Power Outlet

EXTERIOR FEATURES

Power Heated Fold-Away Mirrors
Bright Rear Bumper
Full-Size Spare Tire
Cargo Lamps

20" Steel Spare
3.92 Axle Ratio
Fog Lamps
Rear Sliding Window
Front and Rear
Folding Flat Load
Multi-Stage Over-
Tip Start
3.55 Axle Ratio
5.7-Liter HEMI
Electronically-

DESTINATION

TOTAL BE

Lonestar P
No Charge 20"
(\$995 Value)



TO

** Certified

WARRANTY CO

3-year or 20,000
Towing assistanc
Ask dealer for details
Excludes contact

Power Windows with Driver's One-Touch-Down Feature
20-Gallon Fuel Tank

INTERIOR FEATURES

Air Conditioning
4-Spoke Steering Wheel
Tilt/Telescoping Column
Speed Control
Power Windows with Driver's One-Touch-Down Feature
Power Locks
Remote Keyless Entry
Instrument Cluster with Tachometer
Passenger Side Sun Visor w/Mirror
Overhead Console with Trip Computer
AM/FM Stereo with CD Player
4 Speakers
YES Essentials(R) Stain/Odor Resistant Seat Fabric
40/20/40 Split Bench Seat
Rear Folding Seat
Rear Undersat Compartment Storage
Passenger Assist Handle
12-Volt Auxiliary Power Outlet

EXTERIOR FEATURES

Power Heated Fold-Away Mirrors
Bright Rear Bumper
Full-Size Spare Tire
Cargo Lamp

Folding Flat V
Multi-Point L
Tie Start
3.55 Axle Ra
5.7-Liter HEM
Electronic

DESTINATION

TOTAL BI

Lonestar

No Charge 20
(\$1995 Value)



** Car

WARRANTY C

3-year or 36,000

Towing with

And dealer for

2 vehicles

Warranty Dept. Part of Chevy WARREN, MICHIGAN, U.S.A.

1-877-444-2535-1N02M



Folding Flat Load Floor \$100
 Multi-Speed Overdrive Automatic Transmission \$1,170
 Tip Start
 3.55 Axle Ratio
 5.7-Liter HEMI(R) Multi Displacement Engine \$1,145
 Electronically-Controlled Throttle

DESTINATION CHARGE \$900

TOTAL BEFORE DISCOUNT \$32,750

Lonestar Package Includes:

No Charge 20" Wheels/Tires
 (\$995 Value)

TOTAL PRICE: * \$32,750

** Certified to the federal regulations that allow
 less forceful airbags

WARRANTY COVERAGE

3-year or 36,000-mile Basic Limited Warranty
 Towing assistance during Warranty period**
 Ask dealer for a copy of the Limited Warranty.
 Excludes normal maintenance and wear items.

2007
 1-800-4-A-ARROW
 1-800-4-A-ARROW
 1-800-4-A-ARROW

2007
 1-800-4-A-ARROW
 1-800-4-A-ARROW
 1-800-4-A-ARROW



*MSRP. Excludes taxes, license, title, and destination charge. Dealer sets actual price.
 **See dealer for details.

RETAIL PRICE OF PREPARATION

28,250

4X2
 Pearl Coat Exterior Paint
 Interior Color
 Bench Seat

Seat
 Displacement Engine
 Automatic Transmission

(REPLACED BY OPTIONAL EQUIPMENT)

FEATURES

ABS
 Anti-LOCK
 Tires

Power
 Windows

Touch-Downs Feature

Removable Tailgate with Caliper Latches
 Cloth 40/20/40 Bench Seat

OPTIONAL EQUIPMENT

Cloth 40/20/40 Premium Bench Seat
 Power 6-Way Driver's Seat
 Rear 60/40 Split Folding Seat
 Front Center Seat Cushion Storage

Customer Preferred Package 250

Quad Cab Lone Star Value Group
 P275/60R20 BSW All Season Tires
 20" x 9.0" Aluminum Wheels
 "Lonestar" Badge

SIRIUS(R) Satellite Digital Radio
 For More Info, Call 888-539-7474

Chrome Surround and Grille
 20" Steel Spare Wheel
 3.92 Axle Ratio
 Fog Lamps

Rear Sliding Window
 Front and Rear Floor Mats
 Folding Flat Load Floor

Multi-Point Overdrive Automatic Transmission
 Tire Start
 3.55 Axle Ratio

5.7-Liter HEMI(R) Multi Displacement Engine
 Electronically-Controlled Throttle

DESTINATION CHARGE

TOTAL BEFORE DISCOUNT

\$455

\$700

\$30

\$100

\$1,670

\$1,145

\$900

\$32,750

Lonestar Package Includes:





































































20110502