

DP14-004

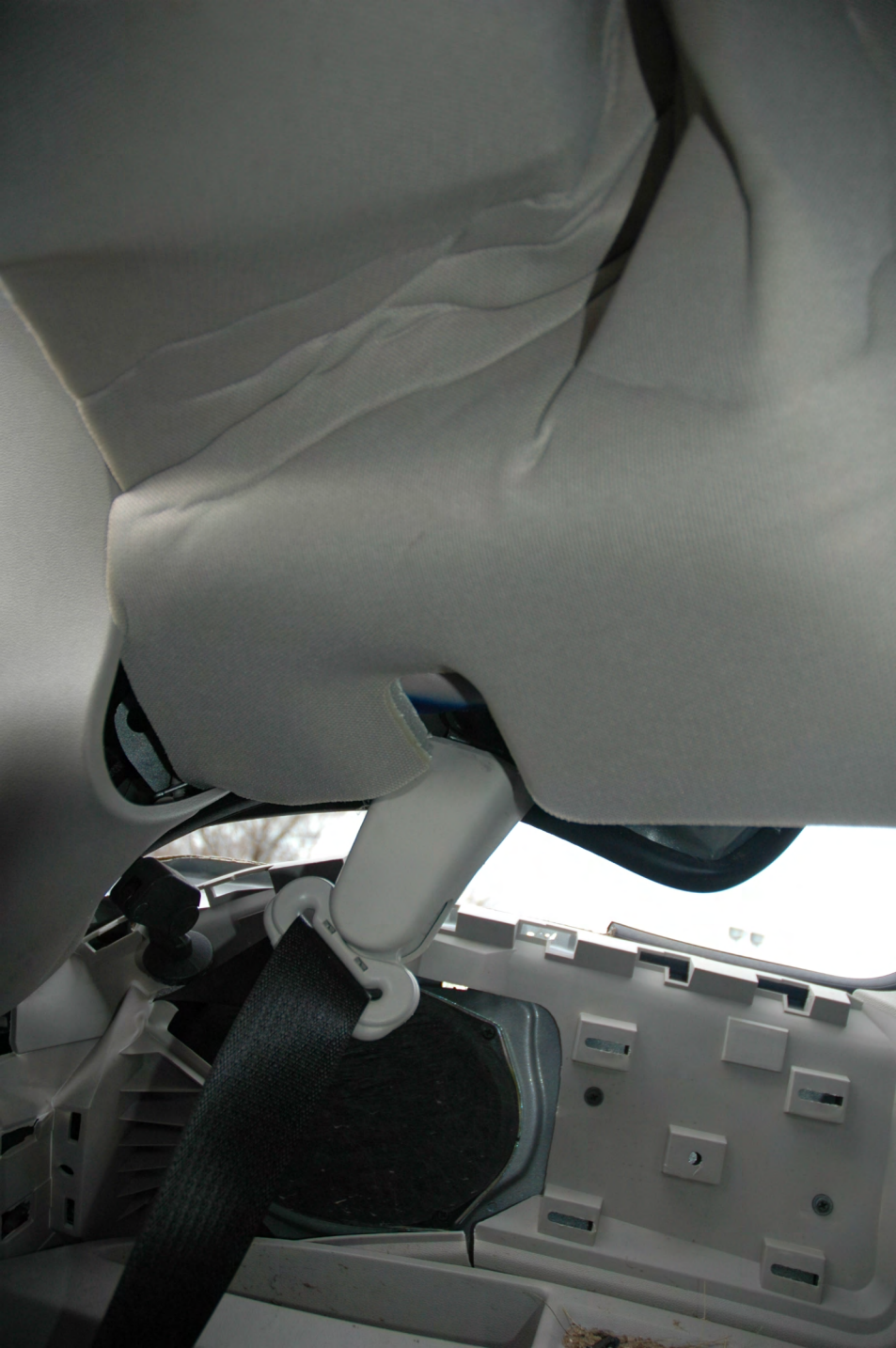
CHRYSLER

9/15/2014

Legals and Cust Complaints

PUBLIC



























































Chrysler Financial Services  
Chrysler Financial Services  
Chrysler Financial Services





































1

2

3

Key in  
Ignition

18662 mi OFF





Key in Ignition

---

18662 mi OFF



P R N D 7 7



Key in  
Ignition

18662 mi OFF





Key in  
Ignition

18662 mi OFF



POLESTAR  
BY VOLVO



N

54°F

Key in  
Ignition

18662 mi ACCY



P R N D  $\uparrow$ / $\downarrow$

BRAKE





P R N D  $\uparrow$ / $\downarrow$



NW 55°F

Radio Off

Fuel Economy ▶

Vehicle Speed

Trip Info

18662 mi RUN



P

R

N

D



BRAKE ●

NW

55°F

Radio Off

Fuel Economy ▶

Vehicle Speed

Trip Info

18662 mi RUN



P

R

N

D



BRAKE

NW

55°F

Radio Off

Fuel Economy ▶

Vehicle Speed

Trip Info

18662 mi RUN



P

R

N

D



BRAKE

NW

55°F

Radio Off

Fuel Economy

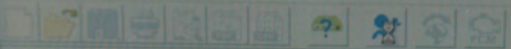
Vehicle Speed

Trip Info

18662 mi RUM







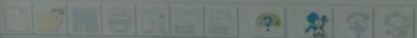
Reading Data From Module

Pass 1



Bosch Crash Data Retrieval Tool - [Collecting Data]

File Edit Run Help Setup



Reading Data From Module

Pass 1

Pass 2

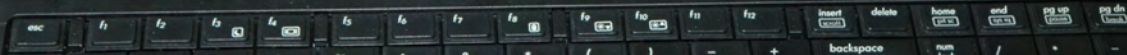
Collecting Data pass: 2

Event: NONE Interval: 20

1:17:00



ProBook 6555b





# Reading Data From Module

Pass 1

Pass 2

Pass 3

Event: NONE Interface: D1

1:13:19M



ProBook 6555b





























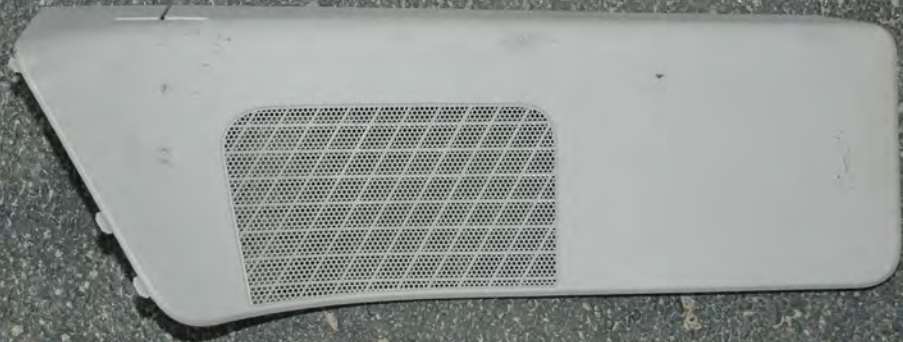


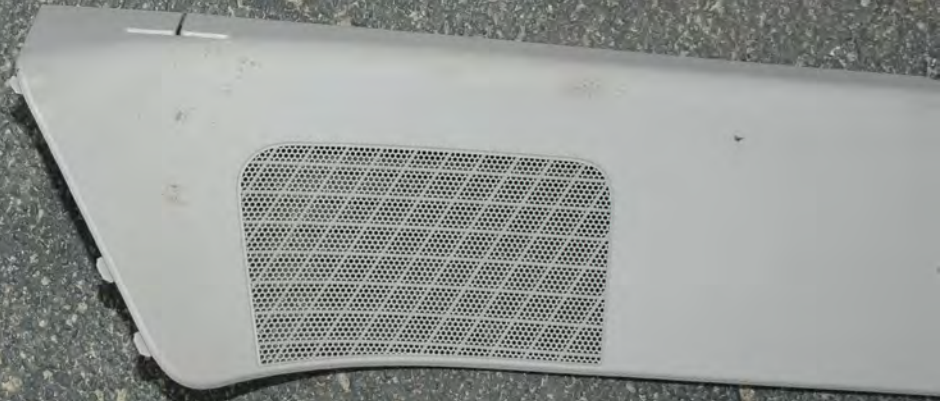


















7TV  
PDZV840Y9AB  
135113R H08-11  
CHRYSLER  
TP90911Y1746



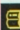


**TIRE AND LOADING INFORMATION**

SEATING CAPACITY - TOTAL: 2  
 GROSS VEHICLE WEIGHT RATING: 4500 LBS  
 THE COMBINED WEIGHT OF PASSENGERS AND CARGO SHOULD NEVER EXCEED 1500 LB

TIRE	FRONT	REAR	SPARE
ORIGINAL TIRE SIZE	235/60R18	235/60R18	T145/60D18
COLD TIRE INFLATION PRESSURE	250 kPa / 36 PSI	250 kPa / 36 PSI	410 kPa / 60 PSI

SEE OWNER'S MANUAL FOR ADDITIONAL INFORMATION



BR721083



This vehicle may include mercury - added devices installed by the manufacturer:

- VIDEO DISPLAY
- NAVIGATION/CAMERA DISPLAY
- H.I.D. HEADLAMPS

Remove devices before vehicle disposal. Upon removal of devices please reuse, recycle or dispose as hazardous waste.

**TIRE AND LOADING INFORMATION**

SAFELY OPERATE YOUR VEHICLE. ALWAYS WEAR YOUR SEATBELT. NEVER DRINK AND DRIVE. NEVER DRIVE UNDER THE INFLUENCE OF DRUGS OR ALCOHOL. ALWAYS FOLLOW THE COMBINED WEIGHT AND DISTRIBUTION LIMITS. ALWAYS USE PROPER TIE-DOWN TECHNIQUE. ALWAYS USE THE CORRECT TIE-DOWN TECHNIQUE. ALWAYS USE THE CORRECT TIE-DOWN TECHNIQUE.

TIRE	FRONT	REAR
ORIGINAL TIRE SIZE	235/60R18	235/60R18
MAXIMUM LOAD CAPACITY PER TIRE	250 lbs / 30 PSI	250 lbs / 30 PSI

SEE OWNER'S MANUAL FOR ADDITIONAL INFORMATION

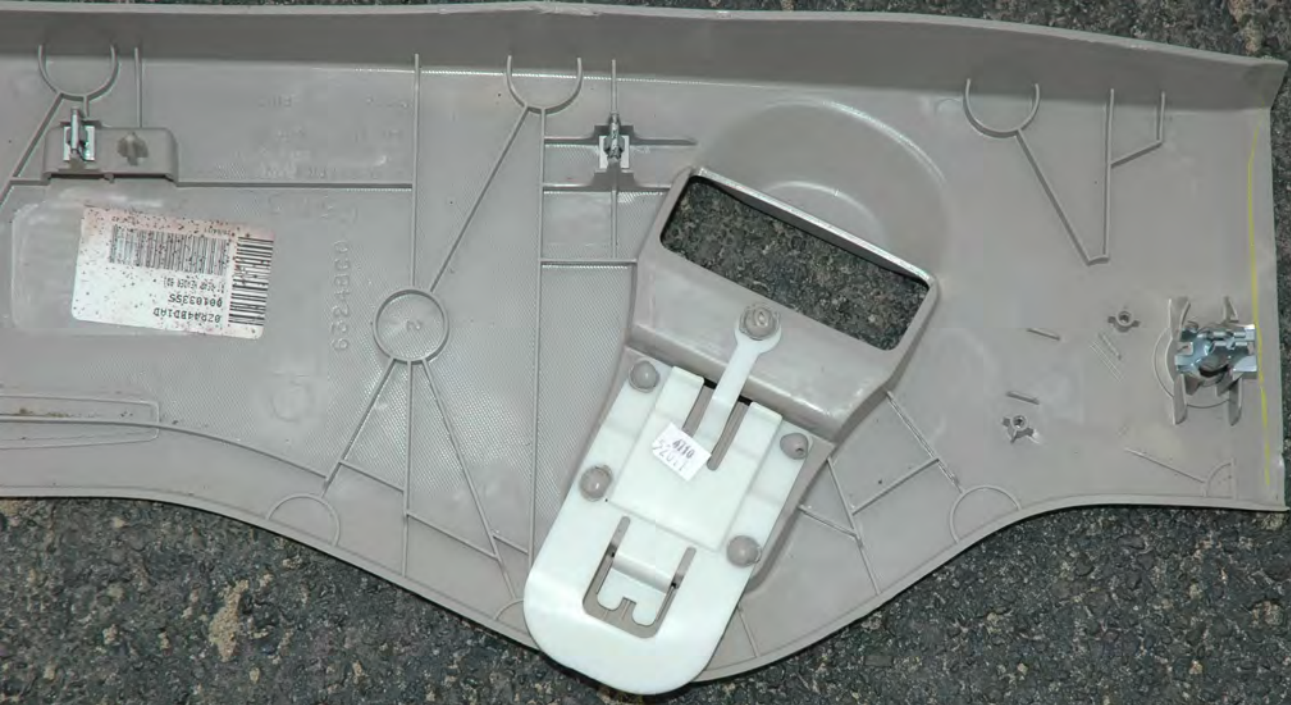


This vehicle may include mercury – added devices installed by the manufacturer:

- \* VIDEO DISPLAY
- \* NAVIGATION/CAMERA DISPLAY
- \* H.I.D. HEADLAMPS

Remove devices before vehicle disposal. Upon removal of devices please reuse, recycle or dispose as hazardous waste.





9010335  
1 9010335 1  
9010335

6324800

4110  
2211

3



028481AD  
9040395  
11 08 0101 01

632480

4110  
5/21/11















