

DP14-004

CHRYSLER

9/15/2014

Legals and Cust Complaints

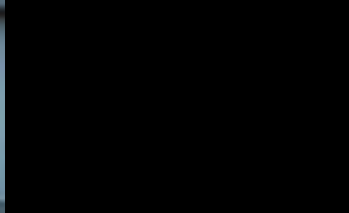
PUBLIC



FIVE HUNDRED
AWD



LIMITED

























PONTIAC

DODGE



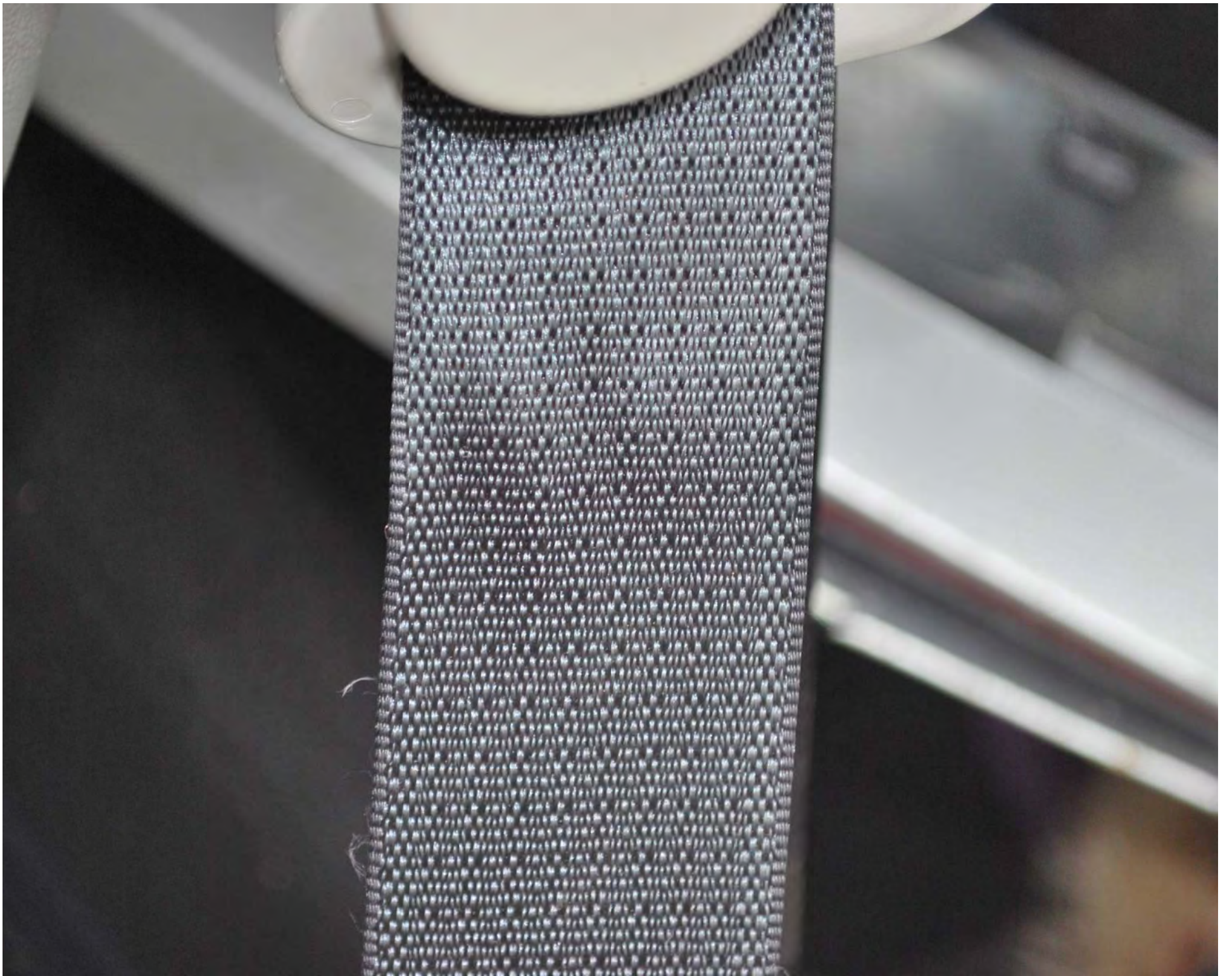


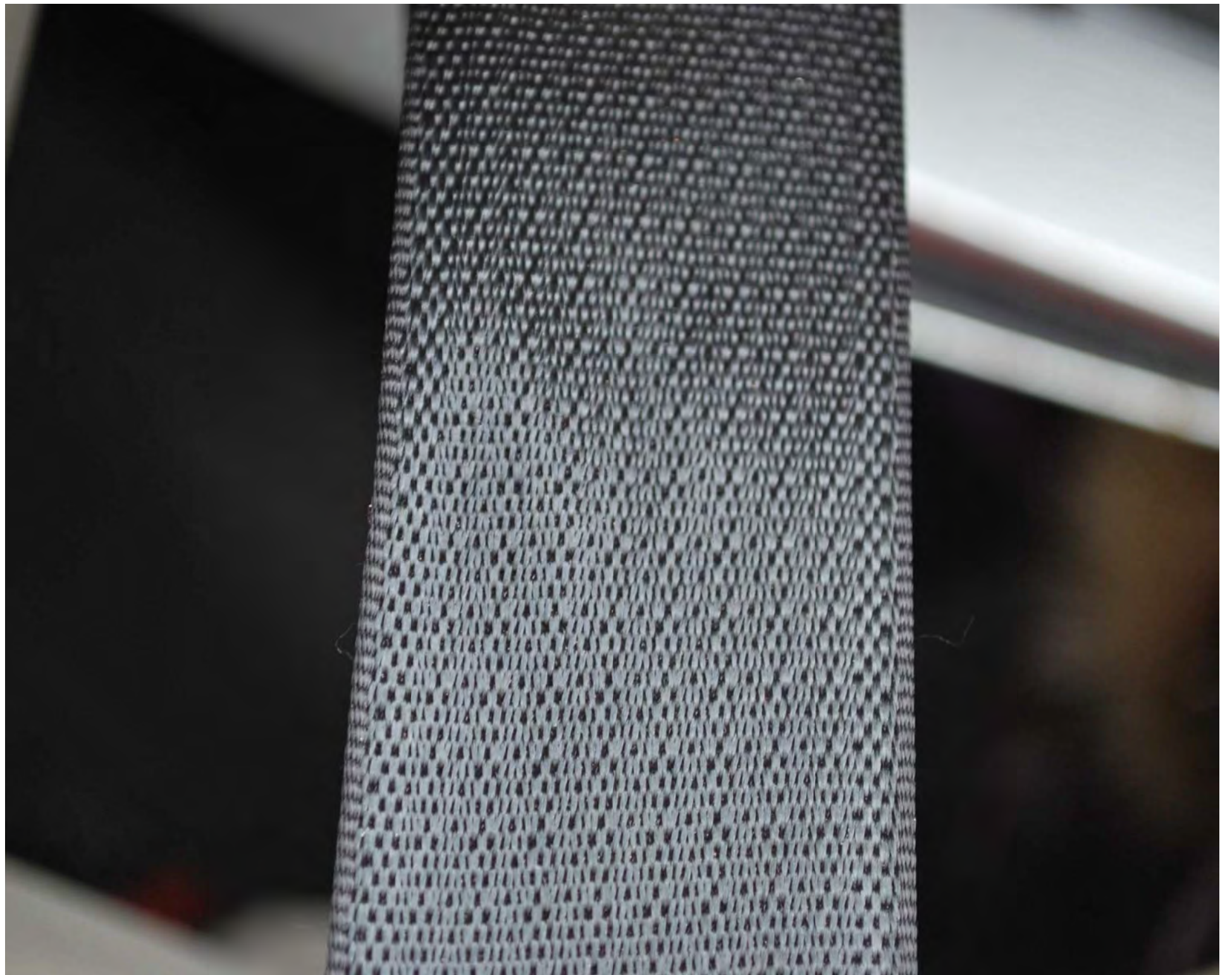


































WARNING!!
DO NOT ATTEMPT TO
REPAIR OR MAINTAIN
THIS EQUIPMENT

OPERATION INSTRUCTIONS
1. Before using the lift, read the instructions carefully.
2. The lift must be used on a level, hard surface.
3. The lift must be used within its rated capacity.
4. The lift must be used with the correct type of tires.
5. The lift must be used with the correct type of vehicle.
6. The lift must be used with the correct type of load.
7. The lift must be used with the correct type of accessories.
8. The lift must be used with the correct type of safety equipment.
9. The lift must be used with the correct type of training.
10. The lift must be used with the correct type of maintenance.



SAFETY WARNINGS

- 1. Always use proper tie-off technique.
- 2. Never work under a vehicle supported by a lift unless the vehicle is properly secured.
- 3. Do not touch the vehicle's electrical system.
- 4. Do not touch the vehicle's engine or exhaust system.
- 5. Do not touch the vehicle's suspension or steering components.
- 6. Do not touch the vehicle's brakes.
- 7. Do not touch the vehicle's tires.
- 8. Do not touch the vehicle's wheels.
- 9. Do not touch the vehicle's body panels.
- 10. Do not touch the vehicle's interior.

REPAIR INFORMATION

Always use proper tie-off technique.

Never work under a vehicle supported by a lift unless the vehicle is properly secured.

Do not touch the vehicle's electrical system.

Do not touch the vehicle's engine or exhaust system.

Do not touch the vehicle's suspension or steering components.

Do not touch the vehicle's brakes.

Do not touch the vehicle's tires.

Do not touch the vehicle's wheels.

Do not touch the vehicle's body panels.

Do not touch the vehicle's interior.







Motorcraft
OIL

Clipboard with papers

Smartphone

Red plate with tools

[Redacted license plate area]













Welding
Storage Protection for Paint
Do not use on painted surfaces
Do not use on plastic
Do not use on chrome
Do not use on stainless steel
Do not use on aluminum
Do not use on galvanized steel
Do not use on copper
Do not use on brass
Do not use on bronze
Do not use on titanium
Do not use on zirconium
Do not use on niobium
Do not use on tantalum
Do not use on hafnium
Do not use on rhenium
Do not use on osmium
Do not use on iridium
Do not use on platinum
Do not use on gold
Do not use on silver
Do not use on nickel
Do not use on cobalt
Do not use on iron
Do not use on steel
Do not use on cast iron
Do not use on manganese
Do not use on silicon
Do not use on phosphorus
Do not use on sulfur
Do not use on selenium
Do not use on tellurium
Do not use on polonium
Do not use on astatine
Do not use on francium
Do not use on actinium
Do not use on thorium
Do not use on protactinium
Do not use on uranium
Do not use on neptunium
Do not use on plutonium
Do not use on americium
Do not use on curium
Do not use on berkelium
Do not use on californium
Do not use on einsteinium
Do not use on fermium
Do not use on mendelevium
Do not use on nobelium
Do not use on lawrencium



























DOT 27VB YAL8 (1011)

PS

235/60R16 100H







235/50R16

MAX LOAD 800 LBS
MIN PRESS 30 PSI

TRAC STBEL 2 POLYESTER
C DEWALL 20 LBS 22 2 2 2 2

STANDARD
LOAD



KUMHO

0252446 000296-3

TUBELESS



PEEL
HERE







235/60R16

100H

S&S

235/60R16



KUMHO

252416 00029645

ALL SEASONS

235/60R16

PEEL
HERE





2D4H 3D65B



4411 653



CHRYSLER

G5BP



2D4RN5DG5BR

⬆️
⬆️ x2
⬆️ x2
Ⓟ
Ⓟ
PANIC

