

AQ13-003

CHRYSLER

12/12/2014

ENCLOSURE 17

CUSTOMER COMPLAINTS





MFD BY DAIMLERCHRYSLER
CORPORATION

DATE OF MFR
3-07

GVWR
4763 KG(10500 LB)

GVWR FRONT WITH TIRES
2359 KG(5200 LB) LT235/80R17E

RIMS AT
17X6.0

COLD
450 KPA(65 PSI)

GVWR REAR WITH TIRES
4242 KG(9350 LB) LT235/80R17E

RIMS AT
17X6.0

COLD
450 KPA(65 PSI)

THIS VEHICLE CONFORMS TO ALL APPLICABLE FEDERAL MOTOR VEHICLE SAFETY AND THEFT
PREVENTION STANDARDS IN EFFECT ON THE DATE OF MANUFACTURE SHOWN ABOVE.

VIN: 3D7MX49A17G7 [REDACTED] TYPE: TRUCK SINGLE DUAL X



MDH: 032306 760AA PNT:PS2 VEHICLE MADE IN MEXICO TRM:MSD5 4348507





















CLASSIC

4x4

















⚠ WARNING



**DEATH OR SERIOUS
INJURY CAN OCCUR**

- CHILDREN 12 AND UNDER CAN BE KILLED BY THE AIR BAG.
- THE **BACK SEAT** IS THE **SAFEST PLACE** FOR CHILDREN.
- **NEVER** PUT A REAR-FACING CHILD SEAT IN THE FRONT.
- SIT AS FAR BACK AS POSSIBLE FROM THE AIR BAG.
- **ALWAYS** USE SEAT BELTS AND CHILD RESTRAINTS.



55365001AB





HOWGIRL UP







02703 065



















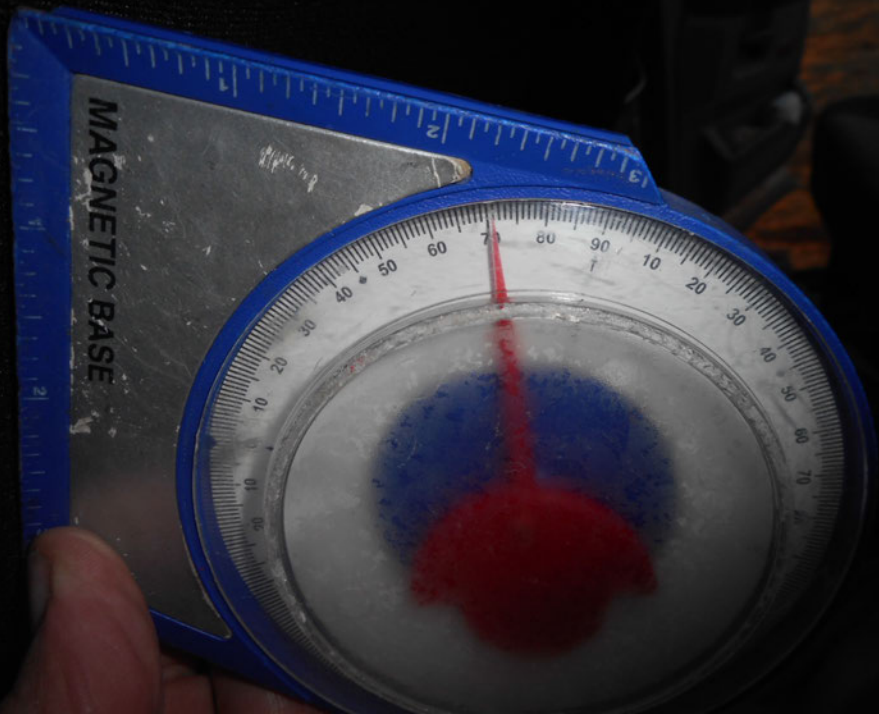


02704 085

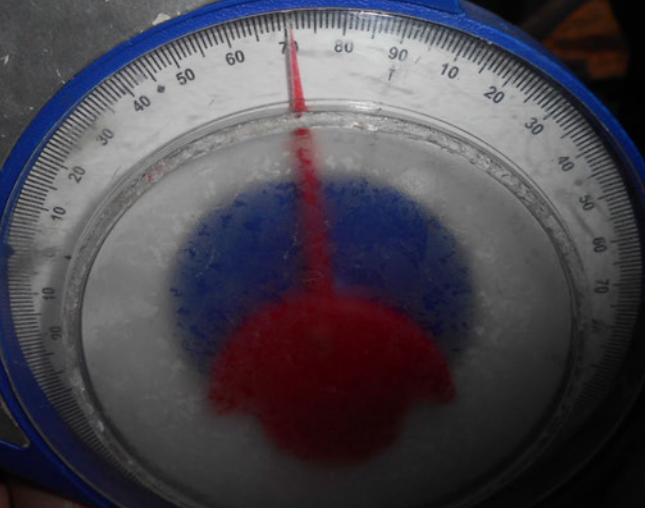








MAGNETIC BASE











2014 Dodge
2014 Dodge
Mr. Jones
2014 Dodge
2014 Dodge
2014 Dodge





COWGIRL UP







HOOD

COWGIRL UP







GOODYEAR

GOODYEAR

GOODYEAR

GOODYEAR

GOODYEAR

GOODYEAR

SAFARI
12 1/2

SAFARI
12 1/2

SAFARI
12 1/2



282A 57285/70017 121/10

006515
00 04011-3



F 3282A

ET 216 57 70

DOT

M3AH

DP2T

2036





FORD
3500
HEAVY DUTY





BRIDGESTONE

MAX LOAD 3000 LBS (1360 KG) 850000

MADE IN JAPAN





DOT

M5AH

DP21

2476



FORD MOTOR COMPANY

17824





HANKOOK







PRO HIT
2.5/10/17/10ST









Kontrol

DOT TMO

HUH5212







LT245/75R17 121/118R



00 0.5011-S



WHEEL WEIGHTS
12.5 LB (5.7 KG)









DOHSE

WARNING & PRECAUTIONS & MAINTENANCE

CAUTION



DANGER / POISON

2.0L 16V

AIRAID

Do not apply these instructions to other than all engines showing following air intake system. Engine must be running. Refer to model code.



2001 412AA

8012-1082-AMPA

! DANGER !
DO NOT SWELL EYES
EX. LUSIVE G-ASIS
EX. MUDY F-2000

! DANGER !
DO NOT SWELL EYES
EX. LUSIVE G-ASIS
EX. MUDY F-2000



WARNING
Do not touch the pressure hot surfaces.
High temperature steam may
be emitted. Use pressure hot parts and
pressure hot parts.































































































































