

MFD BY **CHRYSLER GROUP LLC**

DATE OF MFR (BUILT): 3-12

GAWR FRONT: 1452 KG 3200 LB WITH  
20X8.0 RIMS AT

GAWR REAR: 1770 KG 3900 LB WITH  
20X8.0 RIMS AT

GVWR: 3221 KG 7100 LB

265/50R20 TIRES

250 KPA ( 36 PSI) COLD

265/50R20 TIRES

250 KPA ( 36 PSI) COLD



THIS VEHICLE CONFORMS TO ALL APPLICABLE U.S.A. FEDERAL MOTOR VEHICLE SAFETY STANDARDS IN EFFECT ON THE DATE OF MANUFACTURE SHOWN ABOVE.

VIN: 1C4SDJCT1CC [REDACTED]

VEHICLE MADE IN U.S.A.

TYPE:

MPV

PRINT: PRN

TRIN: AL19

MDH: 030106 005AB



N 100%

---

Ignition or  
Accessory ON

---

2569 mi RUN

 FCW  
OFF P





DODGE

RAM  
500

1624

DODGE







DODGE

REPUBLIC



DURANGO  
AWD



DURANGO  
AWD





DURANGO  
AWD

R/T

Jeep

VE



[Redacted License Plate]

HOWARD  
DODGE CHRYSLER JEEP

DURANGO  
3500

R/T



R/T

Jeep

U







H  
HONDA

DODGE

PIKEPASS









RAM  
1500

771 222-0800  
FARMERS  
CLAIMS SERVICE  
160

FARMERS  
Claims Service







Jeep  
QUADRA-DRIVE















[REDACTED]

[REDACTED]



























































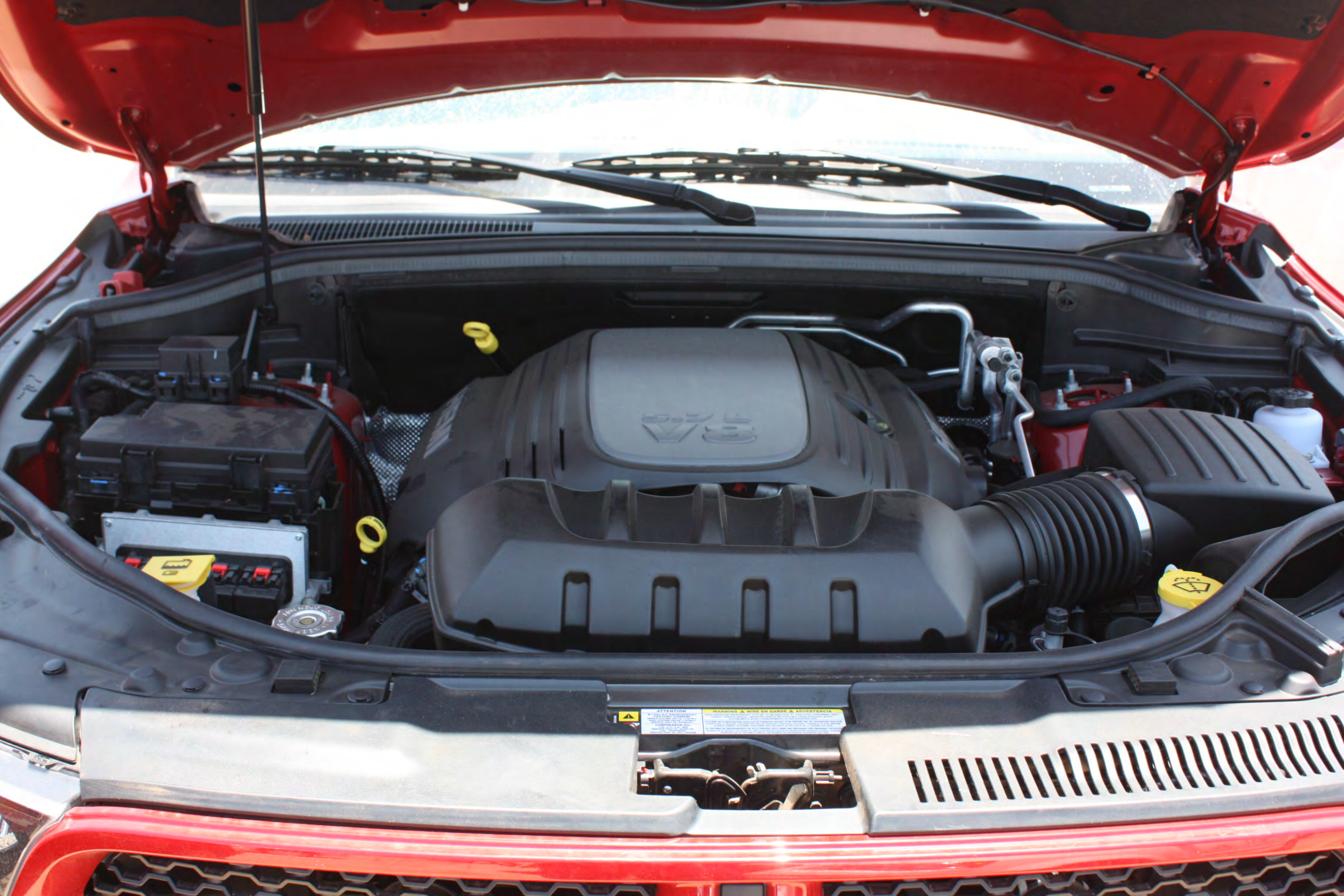




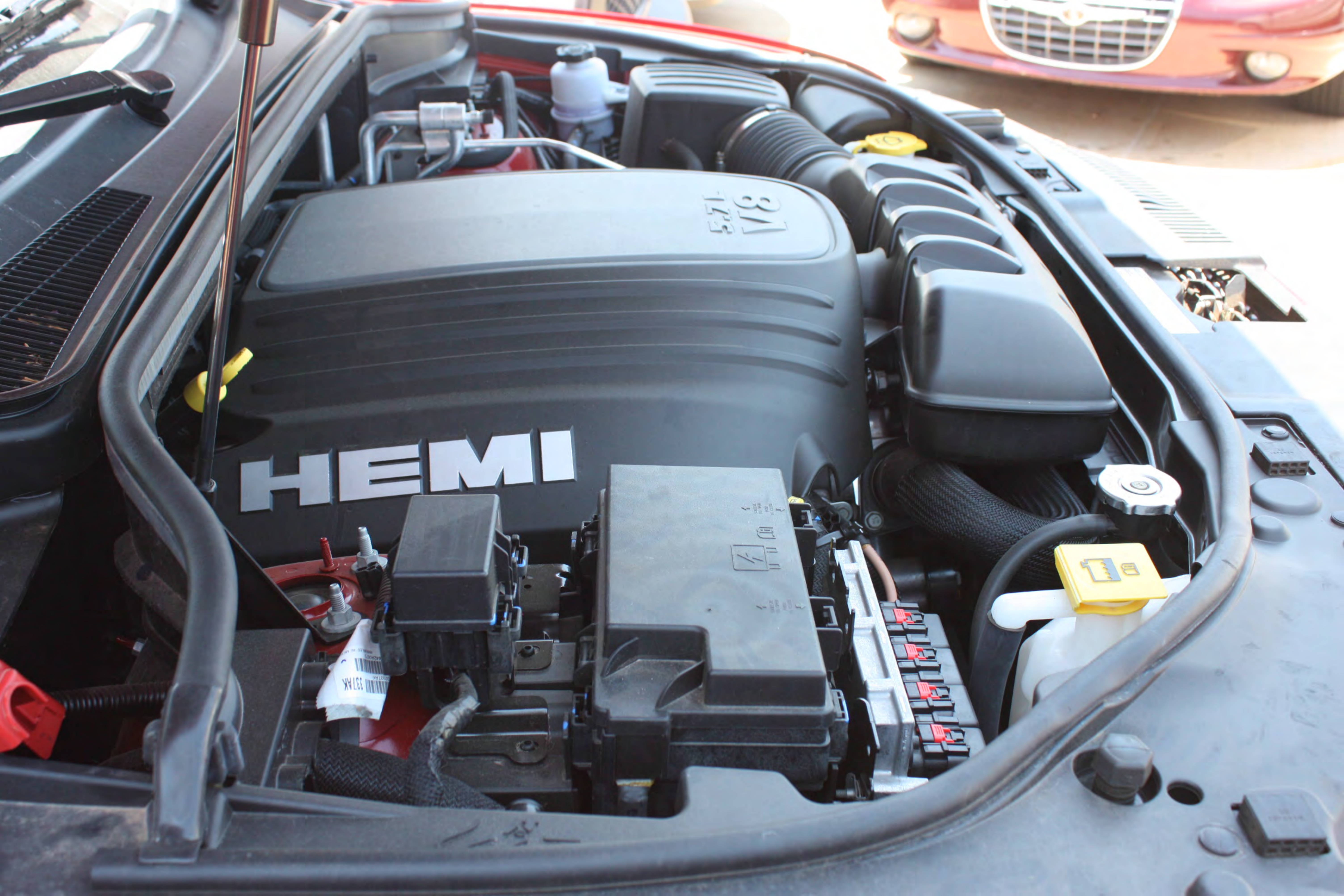












HEMI

3.7L 176

337AK



25A  
04692143AA

OMRON  
04692139AA

OMRON  
04692139AA

Yellow fuse

25

OMRON  
68083380AA

OMRON  
68083380AA

OMRON  
6808338089

OMRON  
68083380AA

OMRON  
68083380AA

OMRON  
68083380AA

OMRON  
68083380AA

OMRON  
68083380AA

15

10

40

25

25

15

10

20

20

10

20

20

20

25

20

10

20

10

15

30

10

25

15

15

40

30

40

20

30

40

40

5T

10

15

25

10

20

10

20

20

20

15

20

20

25

30

30

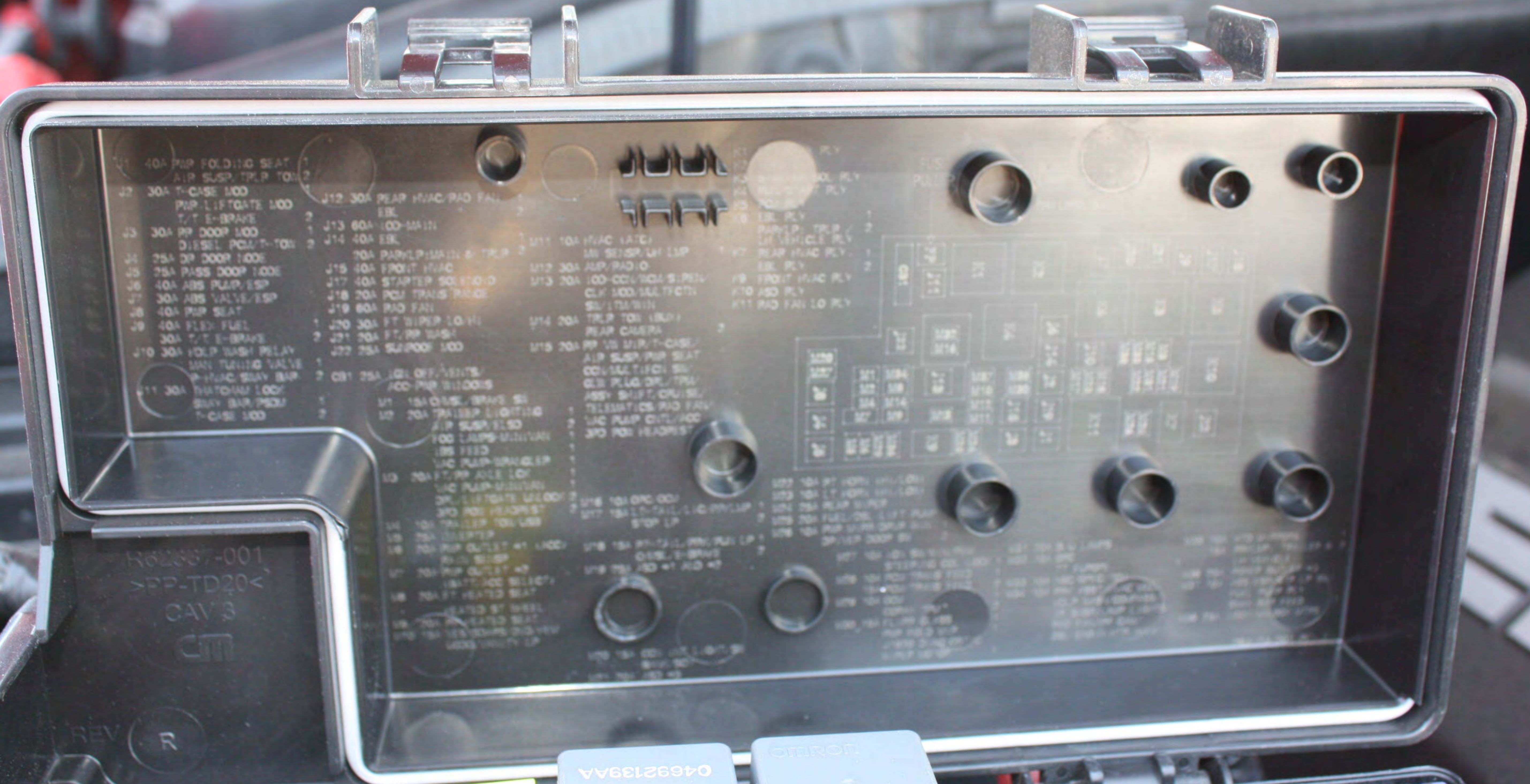
30

20

30

40

20



R62887-001  
 >PP-TD20<  
 GAV 3  
 CMI

0469243AA  
 25A

OMRON  
 04692139AA

OMRON  
 AA6E126940

OMRON  
 69833004

OMRON  
 69833004

OMRON  
 69833004

REV R









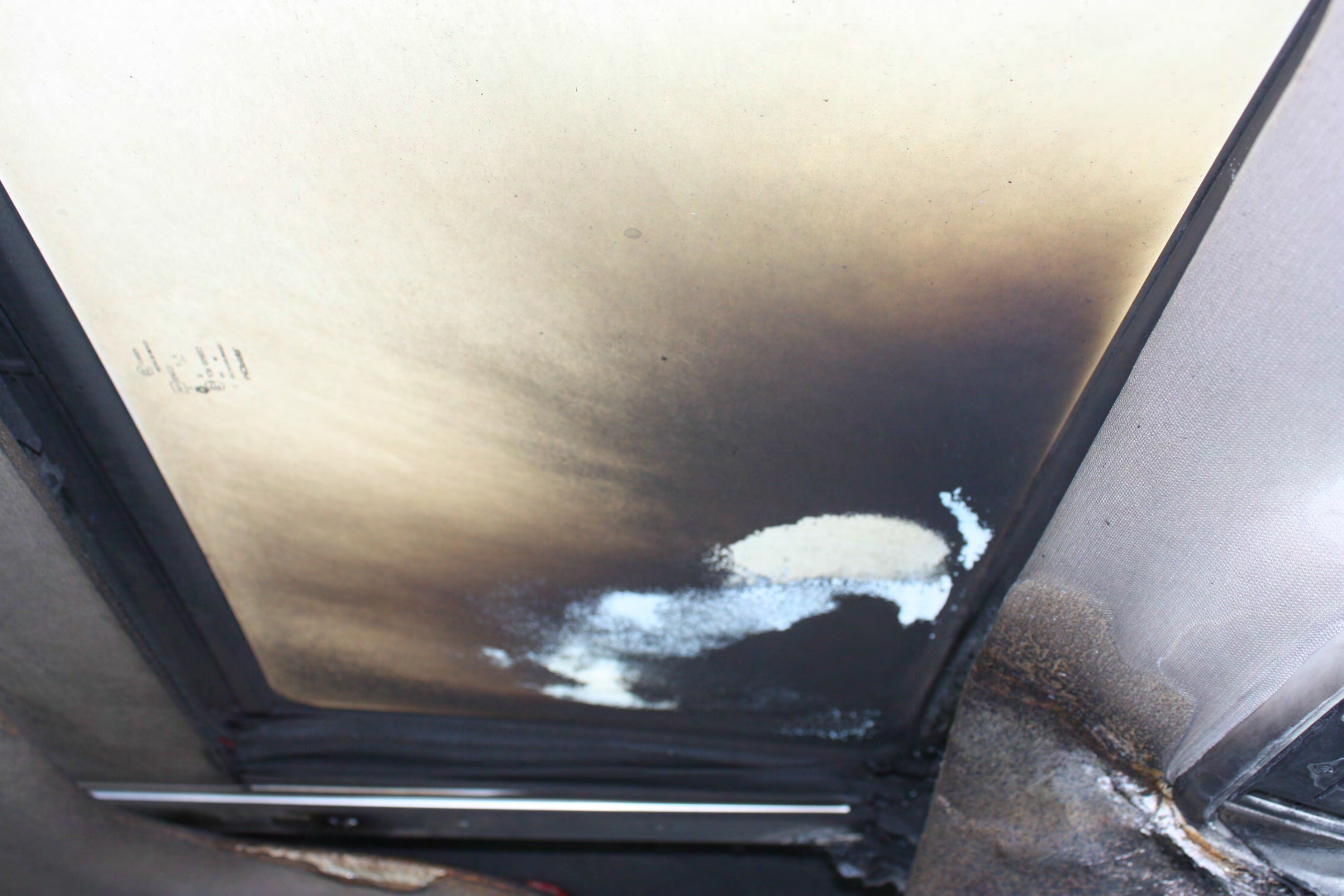












11-11-11







