

PE13-003

FORD

APPENDIS I

SUBJECT VEHICLES

Field Communications

Non Conf Field

Communications

From: Harmon, Derek (D.M.)
Sent: Wednesday, September 26, 2012 2:19 PM
To: Langley, Scott (C.S.); Hwang, Sheng-Jiaw (S.J.)
Cc: Chabon, Michael (W.); Davis, Andrae (A.L.); Parkinson, Tim (T.M.); Bandoske, Pete (P.F.); Wagner, Glen (G.C.); Ricks, Kevin (K.J.); Meier, Kenneth (K.W.); Garant, Dan (DCG); Watson, Joseph (J.W.)
Subject: 2010-2012 Fusion/Escape no DTC loss of RPM
Attachments: dharmon3@ford.com has forwarded you an FMCDDealer Discussion Board topic

The intermittent no DTC loss or RPM problem is getting so much attention on the 10-12 Escape/Fusion I've now put this on the QSF emerging deck. We've gotten too many phone calls from dealership technicians needing help and fleet confidence concerns about this, it is time to monitor this closer and help our technician and customers. The attachment is a chat board between our dealership technicians.

Derek M. Harmon
Ford Customer Service Division
Powertrain Concern Engineer
Email: dharmon3@ford.com
313-317-4276

From: DCPMSGBD, FMCDDealer (.)
Sent: Wednesday, September 26, 2012 2:00 PM
To: Harmon, Derek (D.M.)
Subject: dharmon3@ford.com has forwarded you an FMCDDealer Discussion Board topic

Author

2010 Fusion wrench light on w/ no DTC's in PCM/TCM

Michael Kirkpatrick

University Ford Inc
Durham, NC
(919) 682-9171

Posted: September 25, 2012 9:43:34 AM

Suspect ETB but how to prove it? I know there's more out there because someone else posted it, yet no TSB's or SSM's!!!...a tech drove this vehicle approx 200 miles before any symptoms showed up...finally while cruising @ 73 mph with the cruise set, it went to idle & no accel. pedal response until the engine was shut down and restarted.

John Iorio

Battlefield Ford
Charlottesville, VA
(434) 977-7960

Posted: September 25, 2012 9:47:27 AM

Throttle body actual and desired not matching most likely

heather berrier

Kenny Ross Ford South, Inc.
Pittsburgh, PA
(412) 881-0001

Posted: September 25, 2012 1:06:55 PM

Just put ETB on it will fix it. I have several doing this exact same thing and TB fixed em all.

Phillip Werner

Gem City Ford Lincoln
Quincy, IL
(217) 222-8700

Posted: September 25, 2012 2:07:01 PM

yep ETB same concern my daughter had and it took care of it. Restarting hers always fixed it but is a pain if your in st. louis high traffic and have to find a spot to pull over to cycle key.

Steven Clouser

Maguire's Ford, Inc.
Duncannon, PA
(717) 834-3111

Posted: September 25, 2012 2:20:21 PM

What about checking the electronic throttle body freeze frame datta should be all 0s

Michael Kirkpatrick

University Ford Inc
Durham, NC
(919) 682-9171

Posted: September 26, 2012 11:04:31 AM

Replaced the ETB and after 60 miles OK. Steven, I can't find any freeze frame data as it didn't set any codes. I remember there was some digital numeric code to look for on the 500/Freestyle, but I can't find anything like that on IDS.

Michael Kirkpatrick

University Ford Inc
Durham, NC
(919) 682-9171

Posted: September 26, 2012 11:07:32 AM

Anyone remember SSM/TSB related to the 500/Freestyle ETB numeric gibberish code?

PAUL CAVENDER

Porter Ford
Newark, DE
(302) 738-0800

Posted: September 26, 2012 11:19:11 AM

23761 under special functions

DEKE HOFFMAN

Tri Motor Sales, Inc.
Oak Harbor, OH
(419) 898-2931

Posted: September 26, 2012 12:11:32 PM

seen it, etb for sure

PE13-003

FORD

APPENDIS I

SUBJECT VEHICLES

Illustrations

Non Conf Illustrations

From: Langley, Scott (C.S.)
Sent: Thursday, August 05, 2010 11:38 AM
To: Lardizabal, Sergio (S.)
Subject: FW: ETB Information

Sincerely,

Scott Langley

*PD Supervisor - Component C Current Quality
& Rawsonville Resident Engrg - Engine
(Components = Air Metering, Fuel Metering, Ignition, ESMS)
Ford Motor Company - Bldg #1
cell: 313-805-8789
email: slangle1@ford.com*

Sergio,

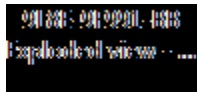
Attached is an exploded view of the ETB that you use for the 2.5.

I have another presentation that has a lot of information in it and some of it is out of date.

I'm going to take some of the relevant slides out of that and forward to you.

- Scott

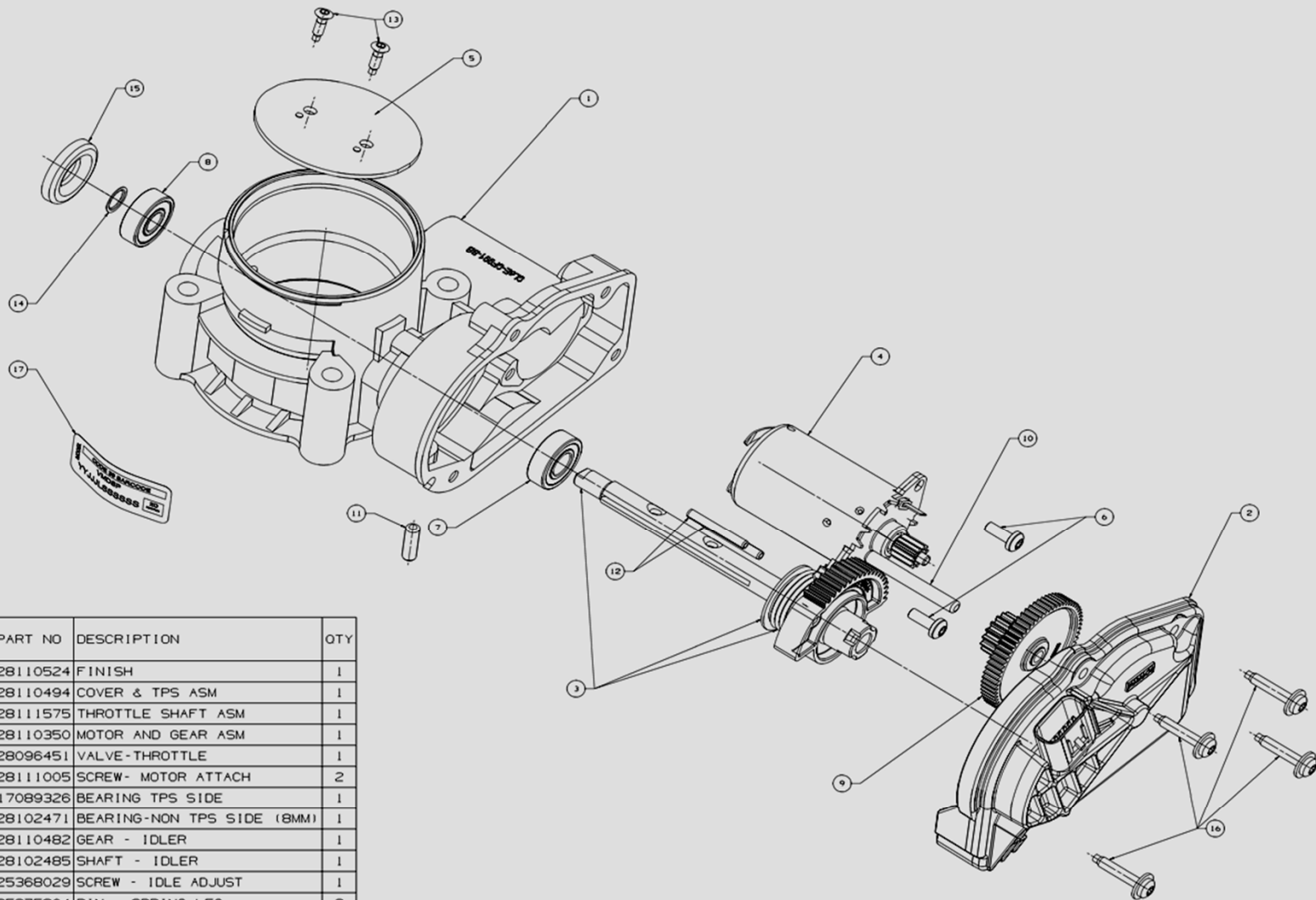
From: Learman, Michael (M.S.)
Sent: Thursday, August 05, 2010 10:28 AM
To: Langley, Scott (C.S.); Chabon, Michael (W.); Parkinson, Tim (T.M.); Bos, Ed (E.A.); Wise, David (D.L.); Hall, Brent (A.)
Subject: RE: ETB Information



Here is an exploded view of the 9L8E-9F991-BB. I hope this helps.

Michael S. Learman

2012 2.0L GDI/GTDI ETB CPMT Leader
Cell: 313-805-8790
Cube 12A099 Bldg 1



ITEM	PART NO	DESCRIPTION	QTY
1	28110524	FINISH	1
2	28110494	COVER & TPS ASM	1
3	28111575	THROTTLE SHAFT ASM	1
4	28110350	MOTOR AND GEAR ASM	1
5	28096451	VALVE - THROTTLE	1
6	28111005	SCREW - MOTOR ATTACH	2
7	17089326	BEARING TPS SIDE	1
8	28102471	BEARING - NON TPS SIDE (8MM)	1
9	28110482	GEAR - IDLER	1
10	28102485	SHAFT - IDLER	1
11	25368029	SCREW - IDLE ADJUST	1
12	25375804	PIN - SPRING LEG	2
13	17090847	SCREW - VALVE ATTACH	2
14	28102486	CLIP - RETAINER	1
15	28102480	PLUG - EXP	1
16	28102507	SCREW - COVER ATTACH	4
17	28120272	LABEL -	1
-	-	-	-
-	-	-	-

13SE07

PE13-003

FORD

APPENDIS I

SUBJECT VEHICLES

Other

Non Conf Other



Sustainability, Environment and Safety Engineering
Vehicle Environmental Engineering

Allen Park Test Laboratory
1500 Enterprise Drive Suite 3W200
Allen Park, Michigan 48101-2053

March 26, 2013

Ms. Ngoc Hoang Tran
Low Emission Vehicle Program
Massachusetts Department of Environmental Protection
One Winter Street 10th Floor
Boston, Massachusetts 02108

Dear Ms. Tran:

In accordance with Mr. Cox's letter of October 15, 1997, Ford Motor Company (Ford) herewith files copies of California Emissions Information Reports 12-E12 through 12-E16 concerning certain 2009, 2010, and 2011 model Ford vehicles. These reports are based on vehicles sold in California and serviced at Ford's California dealerships.

It must be noted that Ford, by filing these reports, does not admit the existence of a defect subject to coverage under the Production or Performance Warranties provided by Sections 207 (a) and (b) of the Clean Air Act, as amended, or Section 43205 of the California Health and Safety Code.

Please contact George Londy (313) 322-3049, of my staff, if you have any questions.

Sincerely,

A handwritten signature in cursive script that reads "Beth Spencer".

Beth Spencer, Specialty Manager
Car and Truck Certification
Department

Attachments
cover/GLL

REDACTED FOR RELEVANCE

REDACTED FOR RELEVANCE

REDACTED FOR RELEVANCE

EMISSIONS INFORMATION REPORT

1. Manufacturer's Corporate Name - Ford Motor Company

2. Field Information Report Number Reference - 12-F14

3. Description of Each Class or Category of California-Certified Vehicles or Engines Affected by the Failure

Some 2010 model 3.0L Fusion and Milan passenger cars with California test group AFMXV03.0VDF are potentially affected.

4. Description of the Emission-Related Component that Failed, the Failure, and the Probable Cause of Failure

Warranty claims for replacement of the Throttle Body (base part number 9E926) exceed 4% for this test group. Analysis of the returned parts shows;
3 parts - No problem found,
12 parts - Failed due to a high resistance spot on the throttle body motor commutator,

The replacement parts installed are 9L8Z-9E926-A, and DS7Z-9E926-A.

5. Description of Driveability Problems or Impact on Any Other Engine Performance Factors Likely to Result from the Failure

The claims were prompted by various customer-reported concerns, which are binned into the following Customer Concern Code categories: Malfunction Indicator Light illumination (45.4%), engine stalling concerns (18.4%), poor engine performance/lacks power concerns (15.6%), engine hesitation/surge concerns (10.4%), Wrench Light illumination (4.5%), engine starting concerns (3.2%), and engine idle concerns (2.5%). These concerns will cause the vehicle operator to seek corrective action.

6. Evaluation of the Emission Impact of the Failure and Any Available Emission Data which Relate to the Failure

Ford judges that exhaust emissions may be adversely affected in some cases where engine performance concerns are present.

Ford does not, by filing this report, make a determination of an emissions defect subject to Sections 207 of the Clean Air Act (42 U.S.C. § 7541), as amended, or Section 43205 of the California Health and Safety Code, or a safety defect subject to 49 U.S.C. § 30118.

REDACTED FOR RELEVANCE



Sustainability, Environment and Safety Engineering
Vehicle Environmental Engineering

Allen Park Test Laboratory
1500 Enterprise Drive, Suite 3W200
Allen Park, Michigan 48101-2053

March 26, 2013

Ms. Annette Hebert, Chief
California Air Resources Board
Mobile Source Operations Division
9480 Telstar Avenue No. 4
El Monte, CA 91731

Dear Ms. Hebert:

In accordance with Section 2146, Title 13, California Code of Regulations, Ford Motor Company (Ford) herewith files Emissions Information Reports 12-E12 through 12-E16 concerning certain 2009, 2010, and 2011 model Ford vehicles. These reports are based on vehicles sold in California and serviced at Ford's California dealerships.

It must be noted that Ford, by filing these reports, does not admit the existence of a defect subject to coverage under the Production or Performance Warranties provided by Sections 207 (a) and (b) of the Clean Air Act, as amended, or Section 43205 of the California Health and Safety Code.

Please contact George Londy (313) 322-3049, of my staff, if you have any questions.

Sincerely,

A handwritten signature in cursive script that reads "Beth Spencer".

Beth Spencer, Specialty Manager
Car and Truck Certification
Department

Attachments
cover/GLL

REDACTED FOR RELEVANCE

REDACTED FOR RELEVANCE

REDACTED FOR RELEVANCE

EMISSIONS INFORMATION REPORT

1. Manufacturer's Corporate Name - Ford Motor Company

2. Field Information Report Number Reference - 12-F14

3. Description of Each Class or Category of California-Certified Vehicles or Engines Affected by the Failure

Some 2010 model 3.0L Fusion and Milan passenger cars with California test group AFMXV03.0VDF are potentially affected.

4. Description of the Emission-Related Component that Failed, the Failure, and the Probable Cause of Failure

Warranty claims for replacement of the Throttle Body (base part number 9E926) exceed 4% for this test group. Analysis of the returned parts shows;
3 parts - No problem found,
12 parts - Failed due to a high resistance spot on the throttle body motor commutator,

The replacement parts installed are 9L8Z-9E926-A, and DS7Z-9E926-A.

5. Description of Driveability Problems or Impact on Any Other Engine Performance Factors Likely to Result from the Failure

The claims were prompted by various customer-reported concerns, which are binned into the following Customer Concern Code categories: Malfunction Indicator Light illumination (45.4%), engine stalling concerns (18.4%), poor engine performance/lacks power concerns (15.6%), engine hesitation/surge concerns (10.4%), Wrench Light illumination (4.5%), engine starting concerns (3.2%), and engine idle concerns (2.5%). These concerns will cause the vehicle operator to seek corrective action.

6. Evaluation of the Emission Impact of the Failure and Any Available Emission Data which Relate to the Failure

Ford judges that exhaust emissions may be adversely affected in some cases where engine performance concerns are present.

Ford does not, by filing this report, make a determination of an emissions defect subject to Sections 207 of the Clean Air Act (42 U.S.C. § 7541), as amended, or Section 43205 of the California Health and Safety Code, or a safety defect subject to 49 U.S.C. § 30118.

REDACTED FOR RELEVANCE