



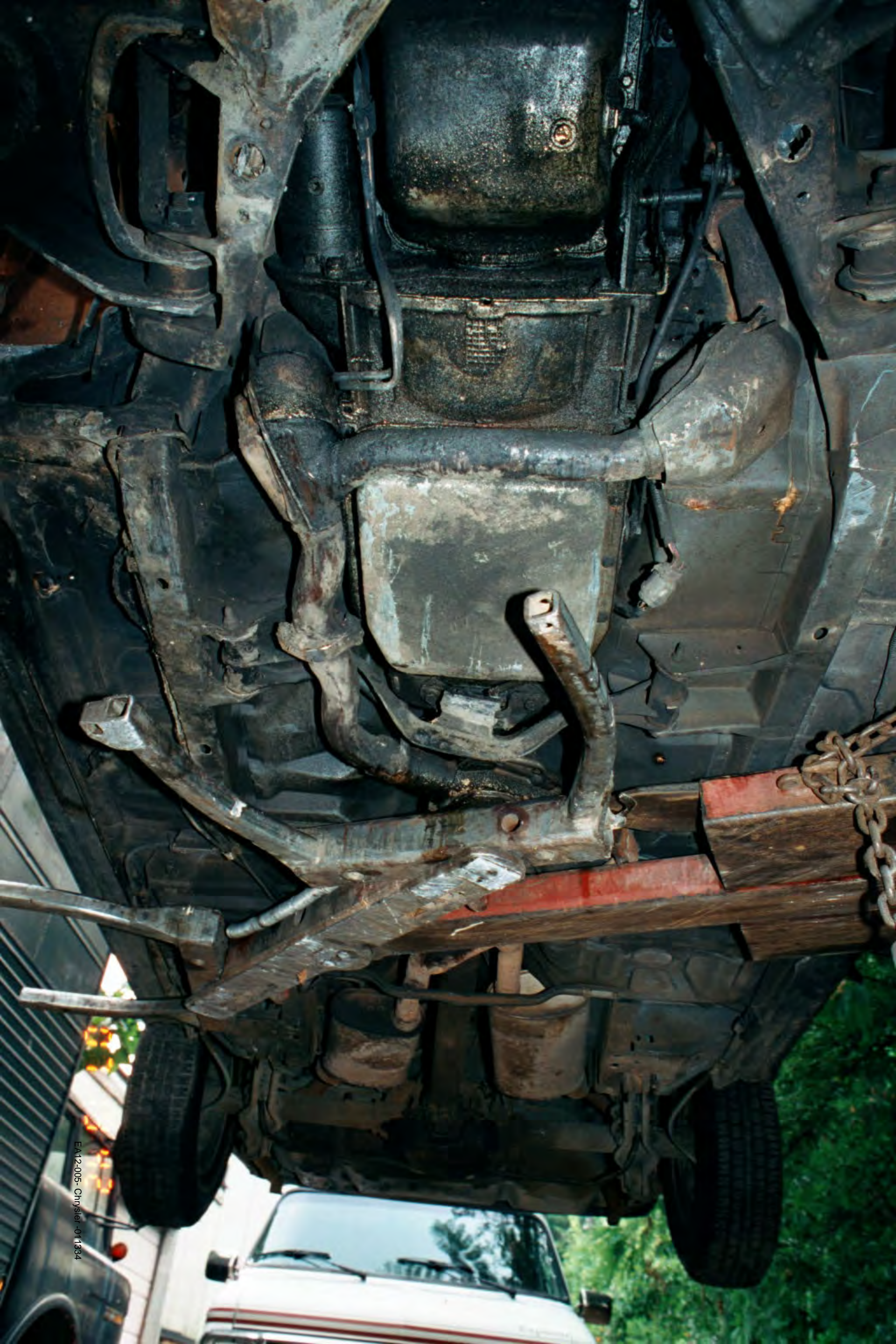
EA12-005- Chrysler -011332





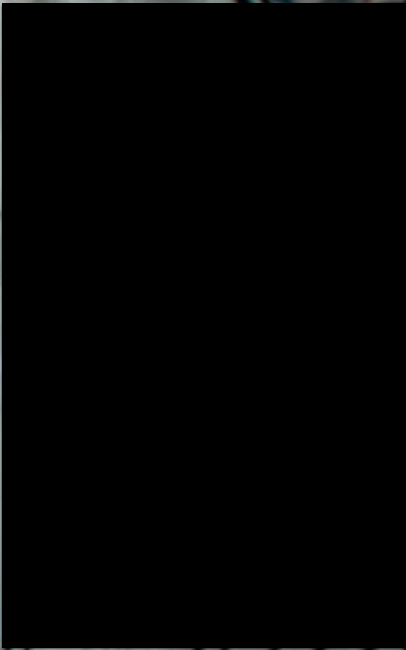
EA12-005- Chrysler -011333





EA12-005 - Chrysler - 011334





77 19 43

EA12-005 Chrysler-011335





07 19 44

EA12-095-Chrysler-071336





EA12-005-Chrysler-011337

07 19 45

07 19 45





07 19 96

EA12 005 Chrysler-011338





07 18 47

EA12-005- Chrysler -011339





07 19 48

EA12-005- Chrysler -011340





07 19 48

EA12-005- Chrysler -011341









07 19 51

Chrysler -011



07 19 52

EA12-005-CH 11814

101











EA12-005- Chrys 3/26

07:19:57





EA12-005- Chrysler 011347





07 19 98





07 19 57

EA12-005- Chrysler -011349









F

07 19 59

EA12-005- Chrysler -011351





07 19 60

EA12-005- Chrysler -011352





07 19 61

EA12-005- Chrysler -011353





07 19 82





07 19 63

EA12-005- Chrysler -011355





07 19 64





07 19 65





07 19 66

EA12-005- Chrysler -011358





EA12-005 - Chrysler - 011

01 19 87



011988







07 19 69





07 18 10

EA12-005- Chrysler -011362





07 19 71



 v. DCC

T-BIRD-ROLL 3









07 19 73





















07 19 78

EA12-005- Chrysler -011371





07 19 79

EA12-005- Chrysler -011372





07 19 80

EA12-005- Chrysler -011373





07 19 81

EA12-005- Chrysler -011374





07 19 82

EA12-005- Chrysler -011375





07 19 83

EA12-005- Chrysler -011376





EA12-005- Chrysler





00  
00  
00  
00





EA12-005- Chrysler-01 379

01:13:48





EA12-005- Chrysler -011380

07.19.07









07 18 09





07 19 90





07 18 91





07 19 92

EA12-005- Chrysler -011385





Handwritten markings on the metal surface, possibly '04' or similar characters.

07 18 93

FA12-005 Chrysler-011386





07 19 94

EA12-005 Chrysler-011387





01 19 99

EA12-005- Chrysler-011386





F-13

2017  
5742

07 19 98





07 19 97

slr 330













07 20 00

EA12-005- Chrysler -011393





072001





07:20:02

EA12-005- Chrysler -011395





07 20 03

EA12-005- Chrysler -011396





EAT2-005- Chrysler-011397

007120



Handwritten markings in yellow and blue ink, including the number '210' and the letters 'L', 'K', and 'D'.



0720 05





Z  
W  
O  
S  
C

07 20 06

EA12-005- Chrysler -011399





07:20:07

EA12-005- Chrysler -011400



—  v. DCC

T-BIRD-ROLL 4





07 20 08

EA12-005 Chrysler -011402





01/12/2025 10:05

EA12-005- Chrysler -011403





07 20 10

EA12-005- Chrysler -011404









07:20 12

EA12-005- Chrysler -011406





07 20 13

EA12-005- Chrysler -011407









0720 15



**[REDACTED] v CHRYSLER**  
**VEHICLE INSPECTION**  
**12-07-01**

*Polaroids & Photographs*  
*taken by Mike James*  
*Collision Safety Engineering*



SWIFT, CURRIE, MCGHEE & HIERS, LLP

JAMES T. McDONALD, JR.  
JOHN F. SACHA  
MICHAEL H. SCHRODER  
STEPHEN L. COTTER  
ROBERT R. POTTER  
DOUGLAS A. BENNETT  
MARK T. DIETRICH  
LYNN M. ROBERSON  
MARK J. GOODMAN  
JOSEPH A. MUNGER  
R. BRIGGS PEERY  
M. DIANE OWENS  
K. MARC BARRÉ, JR.  
C. BRADFORD MARSH  
THOMAS D. MARTIN  
BRADLEY S. WOLFF  
FREDERICK OWEN FERRAND  
JOHN W. CAMPBELL  
STEPHEN M. SCHATZ  
RICHARD H. SAPP, III  
MICHAEL RYDER  
DEBRA D. CHAMBERS  
RICHARD A. WATTS  
LISA A. WADE  
DOUGLAS W. BROWN, JR.  
CHRISTOPHER D. BALCH  
ANANDHI S. RAJAN  
KENNETH A. DAVID  
PEGGY R. GOODNIGHT  
TIMOTHY C. LEMKE  
DAVID CHARLES KING  
H. LEE PRUETT

ATTORNEYS AT LAW  
THE PEACHTREE  
SUITE 300  
1355 PEACHTREE STREET, N.E.  
ATLANTA, GEORGIA 30309-3231  
WWW.SCMHLAW.COM

MAIN PHONE (404) 874-8800  
FAX (404) 888-6199

DIRECT DIAL (404) 888-6158  
e-mail: mdo@scmhlaw.com

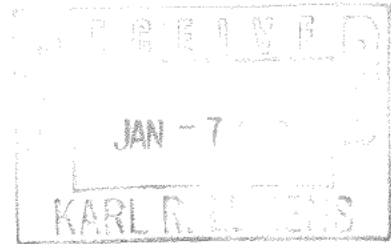
MATTHEW M. LISS  
JAMES D. JOHNSON  
CABELL D. TOWNSEND  
SCOTT M. WILLIAMSON  
SHARON LEAH NEAL  
JOHN F. BLOUNT  
AMY GREENSTEIN  
MELISSA K. MOUNT  
JENNIFER A. RIDDICK  
TERRY O. BRANTLEY  
ROBERT S. HUESTIS  
MICHAEL A. DALTON  
BRIAN M. LEEPSON  
JEANNE K. STRICKLAND  
J. STEPHEN BERRY  
TOYSHA FLOWERS SHARPE  
MAREN R. FROST  
DENISE H. ROWAN  
CRISTINE K. HUFFINE  
MICHAEL T. BENNETT, JR.  
JAMES F. TAYLOR, III  
MOLLY A. HAVIG  
KELLEY C. HERRIN  
MORGAN M. CRESSMAN  
MICHAEL ROSETTI  
MICHAEL P. CARESTIA  
CATHERINE MAZANOVA  
PANKAJ K. SHERE  
SUPRIA B. KUPPUSWAMY  
PHILIP W. LORENZ  
SARA J. SAVAGE  
BENJAMIN A. LEONARD  
MICHAEL R. MARTIN

December 20, 2001

FRANK M. SWIFT  
WARNER S. CURRIE  
GLOVER MCGHEE  
JAMES B. HIERS, JR.  
OF COUNSEL

Karl R. Lukens, Esq.  
DAIMLERCHRYSLER CORPORATION  
CIMS:485-13-62  
1000 Chrysler Drive  
Auburn Hills, MI 48126-2766

RE: [REDACTED] (Atlanta Fire Deaths)  
DaimlerChrysler File No. 1065268  
D/E: 01/26/01



Dear Karl:

Enclosed please find a copy of the Polaroids and photographs taken by Mike James at his inspection on December 7, 2001.

We are still working on getting an LEC set up for late January or early February and hope to have that accomplished in the next week.

Of course, we will keep you advised of developments as they occur.

Best regards.

Very truly yours,

SWIFT, CURRIE, MCGHEE & HIERS, LLP

*M. Diane Owens*  
M. Diane Owens

MDO:sam  
Enclosures





DRIVER SEAT  
FIRMLY ATTACHED TO VEHICLE  
BOTH RECLINE MECHS INTACT  
SILL 2.7 NOSE UP PL-01



DRIVER SEAT  
OB SIDE OF SEAT BACK PUSHED  
LATERALLY IB FROM B-PILLAR  
CONTACT PL-02



DRIVER SEAT  
TOP 3 SPRINGS DEF FORWARD  
BOTTOM 2 SPRINGS DEF RWD - PL-03



DRIVER SEAT  
IB WING BENT OB PL-04





ADJ PIN PUT DENT IN  
B-PILLAR SURFACE

PL-05



ADJUSTER ROD  
BUCKLED IN COMPRESSION

PL-06



DRIVER SEAT  
LATERAL BUCKLING

PL-07



12 1/4" vs. 13 1/4" on RF SEAT

PL-08





FRONT OF DRIVER SEAT PAN  
DEFORMED

PL-09



IB REAR CORNER OF SEAT PAN  
BUCKLED - LATERAL CONTACT  
W/ TUNNEL

PL-10



OB REAR CORNER OF SEAT PAN  
LATERAL BUCKLE

PL-11

BOTH RECLINE MECH INTACT



RF SEAT IB WING BENT IN  
SEAT ATTACHED  
SILL 3.2 NOSE UP SOLID TO VEHICLE  
SEAT BACK ALMOST VERTICAL

EA12-005-Chrysler-010578

PL-12





RF SEAT SPRING WIRES IN  
SEAT BACK NOT DEFORMED  
SEAT BACK FRAME & SEAT CUSHION FRAME  
NOT NOTICEABLY ~~DE~~ DISTORTED PL-13









SV-01



SV-02



EA12-005- Chrysler -010581

SV-03





SV-04



SV-05



EA12-005- Chrysler -010582

SV-06





SV-07



SV-08



EA12-005- Chrysler -010583

SV-09





SV-10



SV-11



SV-12





SV-13



SV-14





SV-15



SV-16





SV-17



SV-18





SV-19



SV-20



EA12-005-Chrysler-010588 SV-21





SV-22



SV-23





SV-24



SV-25



SV-26

EA12-005- Chrysler -010590





SV-27



SV-29



EA12-005 - Chrysler - 010591

SV-28





SV-30



SV-31





SV-32



SV-33



EA12-005- Chrysler -010593

SV-34





SV-35



SV-36





SV-37



SV-38



SV-39

EA12-005- Chrysler -010595





SV-40



SV-41



SV-42

EA12-005- Chrysler -010596





SV-43



SV-44



SV-45





SV-46



SV-47

EA12-005- Chrysler -010598





SV-48



SV-49

EA12-005- Chrysler -010599





SV-50



EA12-005- Chrysler -010600  
SV-51





SV-52



SV-53



EA12-005- Chrysler -010601

SV-54





SV-55



SV-56



EA12-005 - Chrysler -010602

SV-57





SV-58



SV-59



SV-60

EA12.005, Chrysler-010603





SV-61



SV-62



EA12-005- Chrysler -010604

SV-63





SV-64



SV-65



SV-66  
EA12-005- Chrysler -010605





SV-67

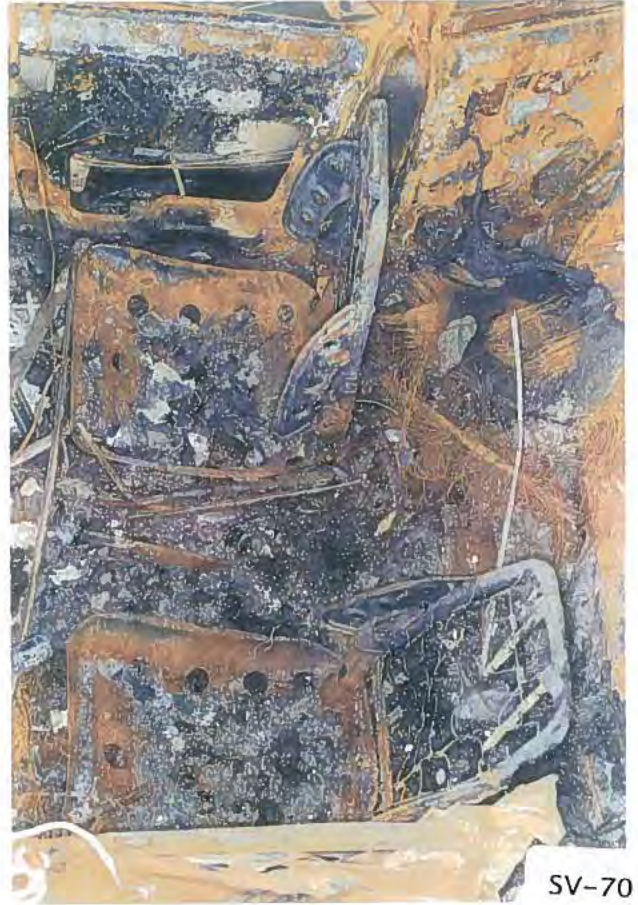


SV-68  
EA12-005- Chrysler 010606





SV-69



SV-70



SV-71

EA12-005- Chrysler -010607





SV-73



SV-74



SV-72





SV-75



SV-76



SV-77





SV-78



SV-79

EA12-005- Chrysler -010610









SV-82



SV-83



SV-84



EA12-005 Chrysler 010012

SV-85





SV-86



SV-87



EA12-005- Chrysler -010613

SV-88









SV-92



SV-93



EA12-005-Chrysler-010615

SV-94





SV-95



SV-96



EA12-005- Chrysler -010616

SV-97





SV-98



SV-99



EA12-005- Chrysler-010617

SV-100





SV-101



SV-102





SV-103



SV-104






SV-105



SV-106



 v. DCC

## Vehicle Inspection – Jeep





EA12-005- Chrysler -011411





EA12-005- Chrysler -011412









EA 003 Chrysler 01 1 11





EA12-005 011415





A12-005-Chrysler-0117-16





LEA42-005 Chrysler 5th Avenue





FAT 003 Chrysler 341418














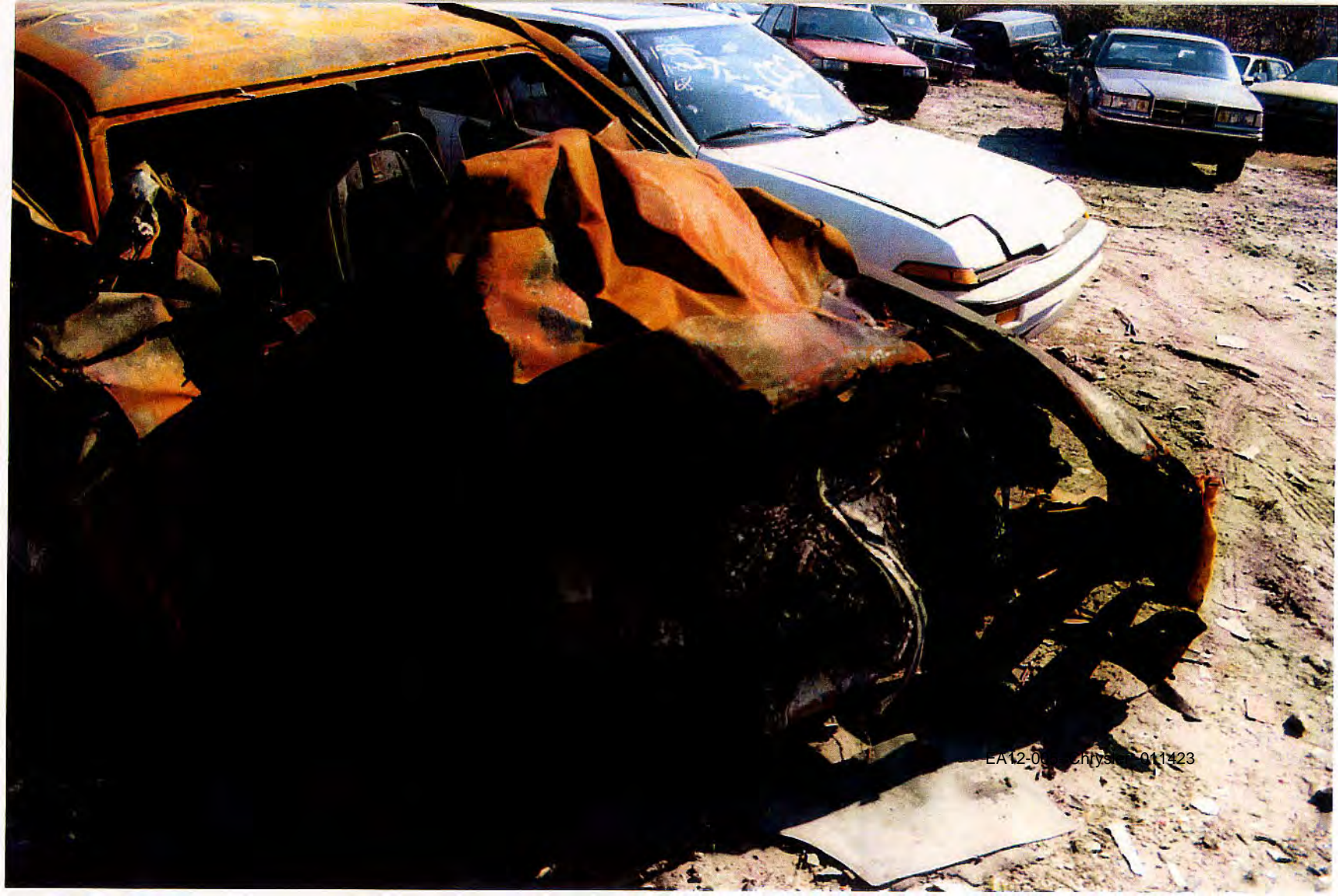
© 2005 Chrysler 014421



 v. DCC

## Vehicle Inspection – T-Bird





EA12-0001 Chrysl 0111423





424





K38  
MAY 71

Number 011425









EA12-005- Chrysler -011427