







072155

EA12-005- Chrysler -011190





072158





072157





072158





072159



█ v. DCC

Jeep – Roll 9





07:21:50

EA12-005- Chrysler -01-106









07:21:52

EA12-015-Chrysler-011198





072163

EA12-005- Chrysler -011199





072164





072155





072166





072167





072168





072169





07:21:70





072171





072172





072173





072174

EA12-005- Chrysler -011210





072175





07:21:16

EA12-003 Chrysler-011212





072177





072178





072179





072180





1

2

072181

A12-005 Chrysler-011217





07:21:02





072183



█ v. DCC

Jeep – Roll 9





072185

EA12-005 Chrysler -011221





072186





072187

EA12-005- Chrysler -011223





072188

EA12-005- Chrysler -011224





072189





072190





072191





072192

EA12-005- Chrysler -011228





072193

EA12-005- Chrysler -011229





072194



00001100

floor  
reinf.



1/2 in

st

Fuel Tank  
Access

Function

pt. Stop

Clamp  
near  
Panel

bump  
over  
edge

FUEL TANK  
SURFACE @  
SEAM

bump  
over  
edge

st

st

st

st  
Panel  
Access

water  
edge  
or  
bump







FUEL TANK  
SEALING  
①

DUMP

VINTAGE

072196



 v. DCC

P-AS-LRG









EA12-005- Chrysler -011235







EA12-005- Chrysler -011236





EA12-005- Chrysler -011237





EA12-005-Chrysler-011238





EA12-005- Chrysler -011239





EA12-005- Chrysler -011240





EA12-005-Chrysler-011241





[REDACTED]





EA12-005- Chrysler -011243







EA12-005- Chrysler -011244





EA12-005- Chrysler -011245





Grande \$84

*Chrysler & Jeep*

ASTRO





EA12-005- Chrysler -011247





EA12-005- Chrysler -011248





EA12-005- Chrysler -011249





EA12-005- Chrysler -011250

















EA12-005-Chrysler-011254





EA12-005- Chrysler -011255





EA12-005- Chrysler -011256









EA12-005- Chrysler -011258



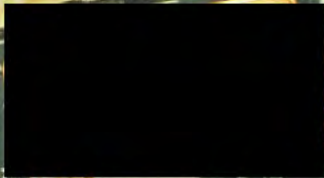


EA12-005- Chrysler -011259





EA12-005- Chrysler -011260



1584





KEEP BACK 500 FEET

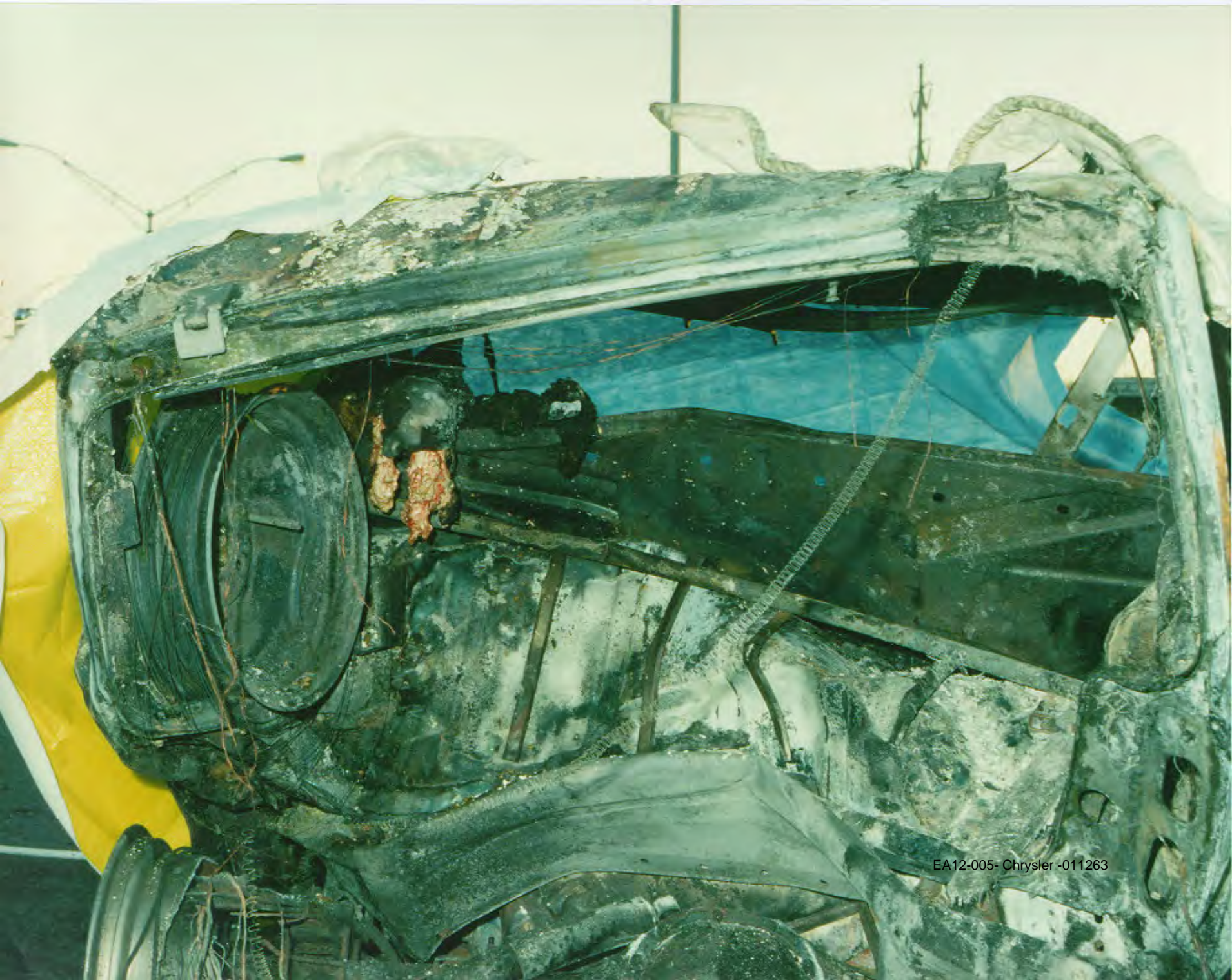
EA12-005- Chrysler -011261





EA12-005- Chrysler -011262





EA12-005- Chrysler -011263





EA12-005- Chrysler -011264





EA12-005- Chrysler -011265





EA12-005- Chrysler -011266





EA12-005- Chrysler -011267





EA12-005- Chrysler -011268









EA12-005- Chrysler -011270





EA12-005-Chrysler-011271





EA12-005-Chrysler-011272









EA12-005-Chrysler-011274





EA12-005- Chrysler -011275





EA 2-005- Chrysler 011276





EA12-005- Chrysler -011277





EA12-005- Chrysler -011278





EA12-005- Chrysler -011279







 v. DCC

P-INS-LG





EA12-005- Chrysler -011282





EA12-005- Chrysler -011283





EA12-005- Chrysler 11284





EA12-005- Chrysler -011285





EA 12-005-Chrysler-01





EA12-005-Chrysler-011287





EA12-006- Chrysler -011288



 v. DCC

## SCENE-ROLL 5



Walking  
Dead  
Sun. August 28 - 9pm  
ELLER

404-CUT-TREE  
We're Growing  
FRANCHISES AVAILABLE

Minnesota  
St. Paul 853  
CUT-TREE

07:20:15

EA12-005 Chrysler 011290





ROAD WORK AHEAD  
TO 1-20 - 1-20 - 1-20  
NO LANE CHANGES

Mississippi  
St. Paul St.

07:20 17

EA12-005- Chrysler- 011291





OFFRAMP TUNNEL 1.1 MI  
TO I-20 - EXIT 247  
2. 25 - 1. 25 MI. R. 4

Miami  
St. Paul \$113  
AirTran

07:20:18

EA12-005-Chrysler-011292





07:20 18

EA12-005 - Chrysler - 011293





EXIT 91  
DAY'S INN  
4292  
CLEARANCE 10' FREE HOV 3+



07:20:20

EA12-005- Chrysler -011294





APPROX TRAVEL TIME  
TO I-20 - EXIT 247  
NO. LANE 90MS 4 71M

07:20:21

EA12-005-Chrysler-011295



APPROX TRAVEL TIME  
TO I-20 - EXIT 247  
15-17 MINS

07:20:22

EA12-005-Chrysler-011296



APPROX TRAVEL TIME  
TO I-20 - EXIT 247  
HOV LANE SAVES 4 MINS

Minneapolis/  
St. Paul \$83

07 20 23

EA12-005- Chrysler -011297



APPROX TRAVEL TIME  
TO I-20 - EXIT 247  
12-14 MINS

07:20:24

EA12-005-Chrysler-011298





Minneapolis/  
St. Paul \$83  
AirTran

07 20 25

EA12-005- Chrysler -011299



TIME  
247  
64 IN



07 20 25

EA12-005- Chrysler -011300





07 20 27

EA12-005- Chrysler -011201



10

01 20 28

EA12-005- Chrysler -011302



10

01 26 28





10

07:20:30

EA12-005-Chrysler-011304



10

07 20 21





07:20:32 EA12-005-Chrysler-011306



APPROX TRAVEL TIME  
TO I-20 - EXIT 247  
9-11 MINS

St. Paul 383



07:20:33

EA12-005-Chrysler-011307



APPROX TRAVEL TIME  
TO I-20 - EXIT 247  
J. 19-11 MINE 1 3

07 20 24

EA12-005- Chrysler -011308



APPROX TRAVEL TIME  
TO I-20 - EXIT 247  
HOV LANE SAVES 3 MINS

07:20:35



APPROX TRAVEL TIME  
TO I-20 - EXIT 247  
9-11 MINS

07:20:36

EA12-005-Chrysler-011310



APPROX TRAVEL TIME  
TO I-20 - EXIT 247  
HC L NE19FME993 11



07 20 27

EA12-005 Chrysler 011311





Where were you when the world changed?  
From **BMW**

EXIT 142

EXIT 142

Linear Communication  
Offering Best Value. Data not to be used for...  
770-4...  
BELL SOUTH

EXIT 86

07:20:38

EA12-005- Chrysler -011312



APPROX TRAVEL TIME  
TO I-20 - EXIT 247  
9-11 MINS

072038

EA12-005-Chrysler-011313



10:11 AM  
9-11 MINS



HOV 3+ LANE  
HOV 2+ LANE



07:20:40

EA12-005-Chrysler-011314



B-11 MINS:



07:20:41 EA12-005- Chrysler\_011315



APPROX TRAVEL TIME  
TO I-20 - EXIT 247  
HOV LANE SAVES 3 MINS



07:20:42

EA12-005 Chrysler 011316

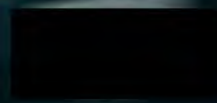




07:20:43

EA12-005-Chrysler-011317





Handwritten orange markings on the asphalt, including a horizontal line and a vertical line intersecting it, possibly indicating a measurement or location.

Handwritten orange markings on the asphalt, including a horizontal line and a vertical line intersecting it, possibly indicating a measurement or location.

07 20 44

EA12-005 Chrysler 011318





07:20:45 EA12-005 Chrysler-011319





404-CUT-TREE  
We're Growing!  
FRANCHISES AVAILABLE



07 20 46



 v. DCC

## SCENE-ROLL 5





07:20:48

EA12-005- Chrysler -011322





07:20:49

EA12-005-Chrysler-011323





07:20:07

EA12-005- Chrysler -011324





07 20 51

EA12-005- Chrysler -011325



 DCC

## T-BIRD-ROLL 2





CLARK





CLARK

07 19 38

© 2007 Chrysler -011328





10









02:18:33