

EA12-005

CHRYSLER

12-13-2012

Enclosure 3 – Public

Subject Vehicles

Lawsuits and Claims

Jeep Grand Cherokee (ZJ, WJ)







































37



38





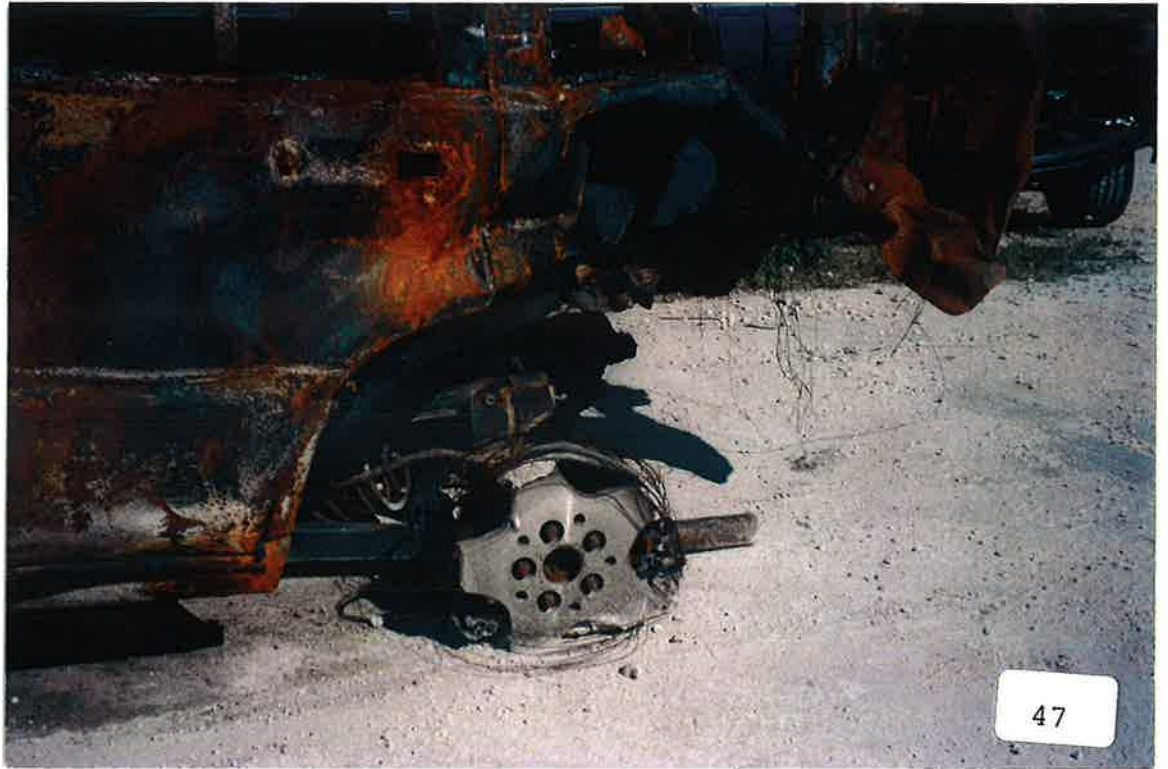




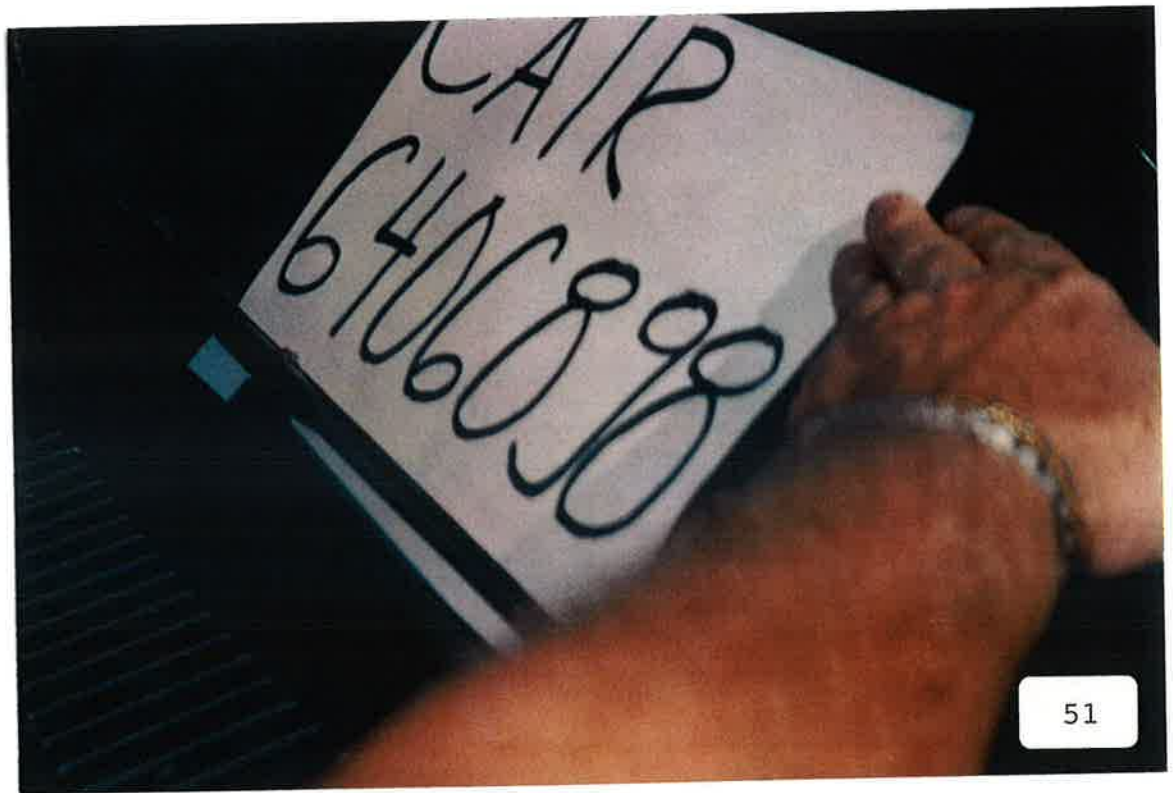
45



46







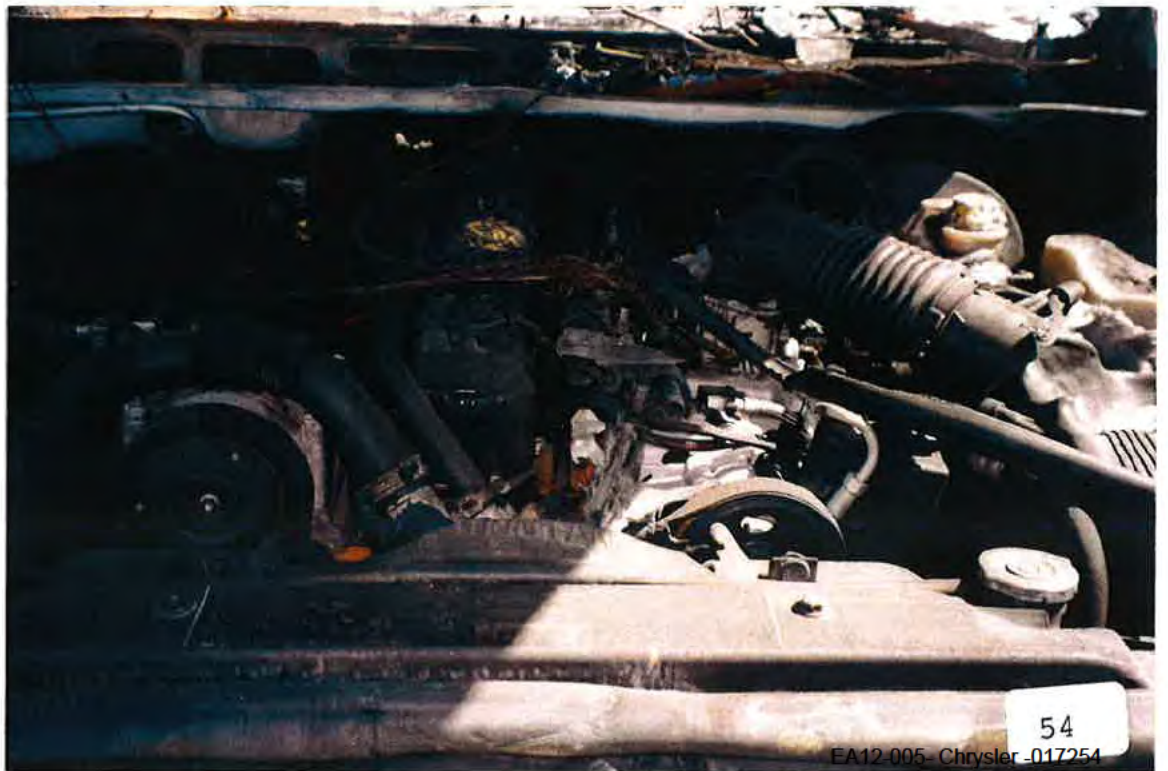
51



52

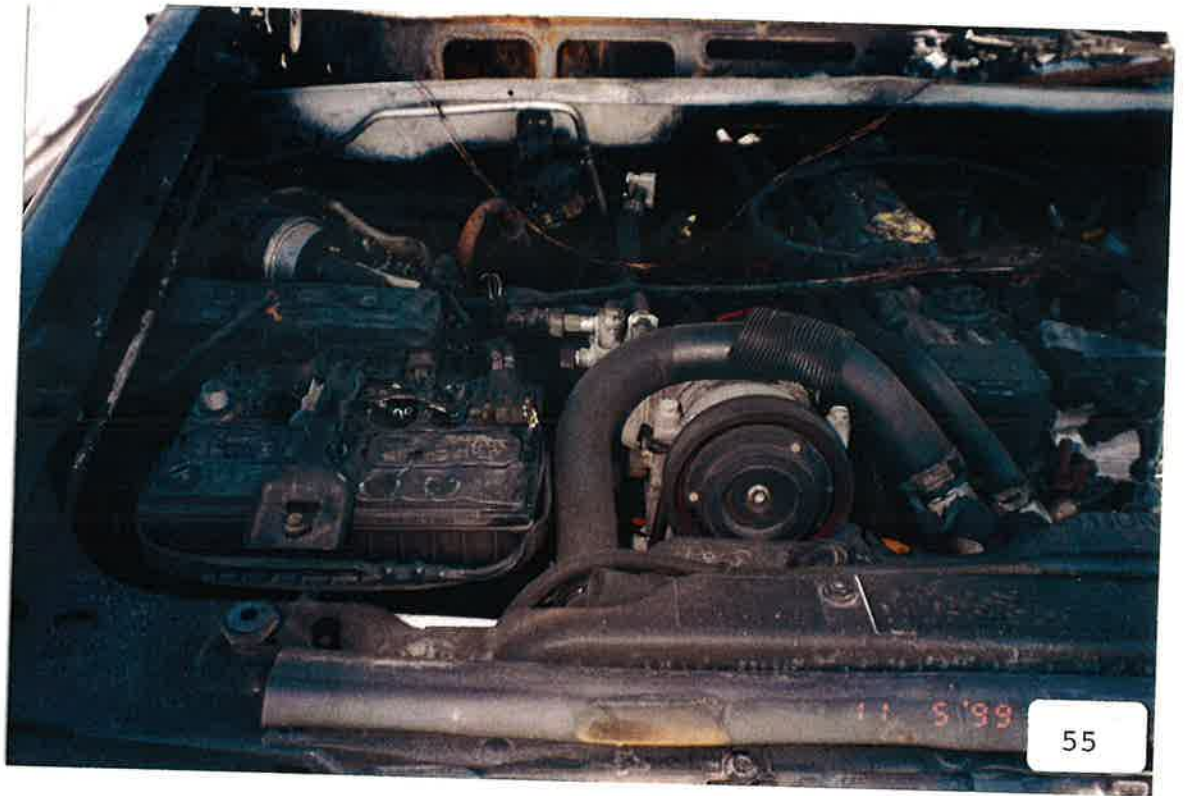


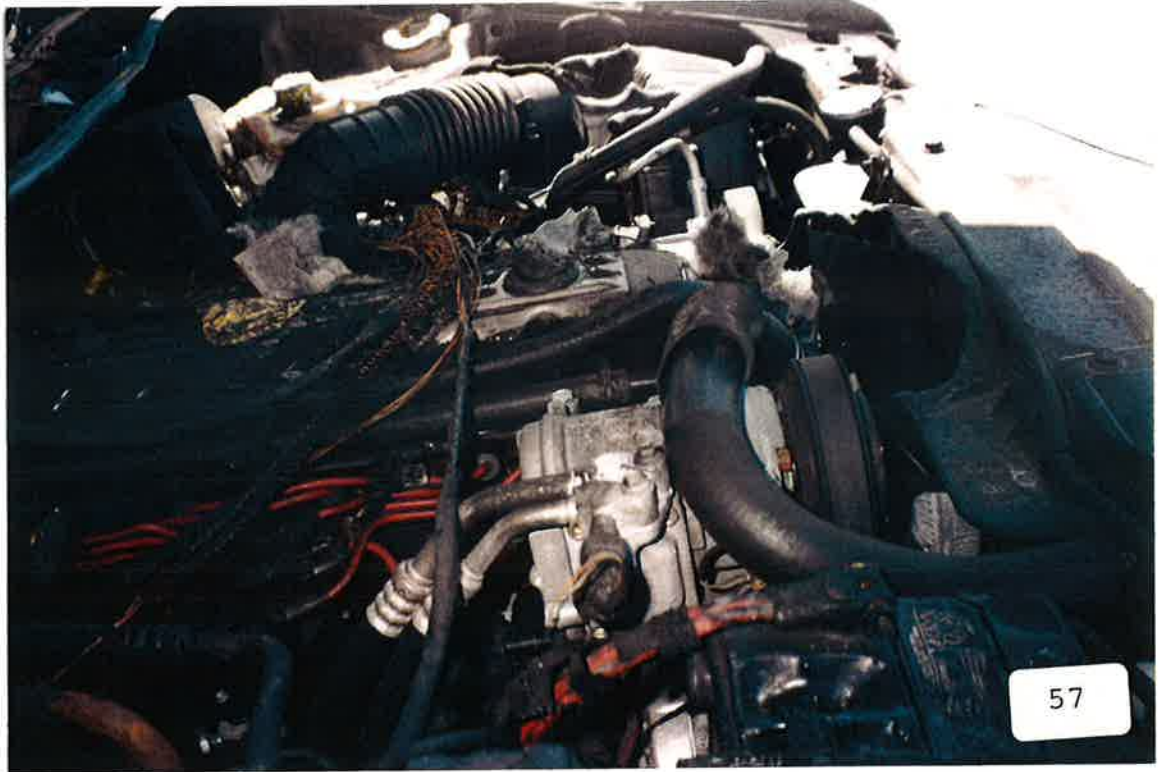
53



54

EA12-005-Chrysler_017254

































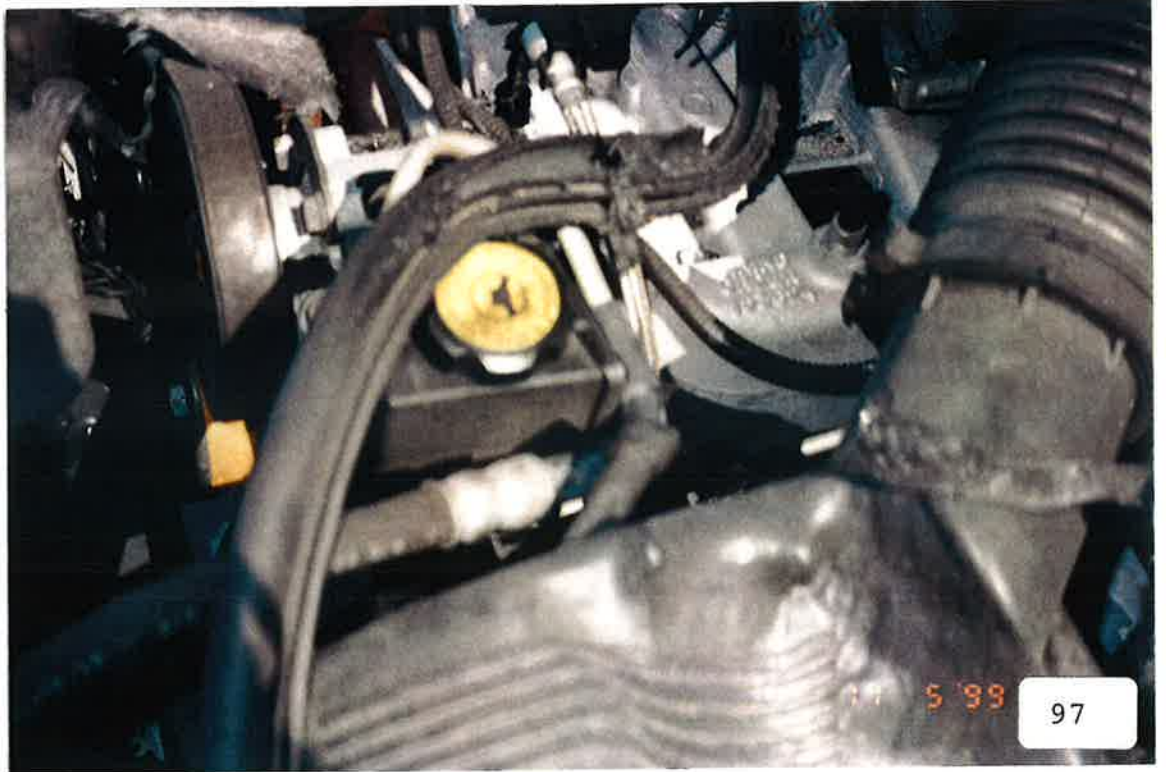


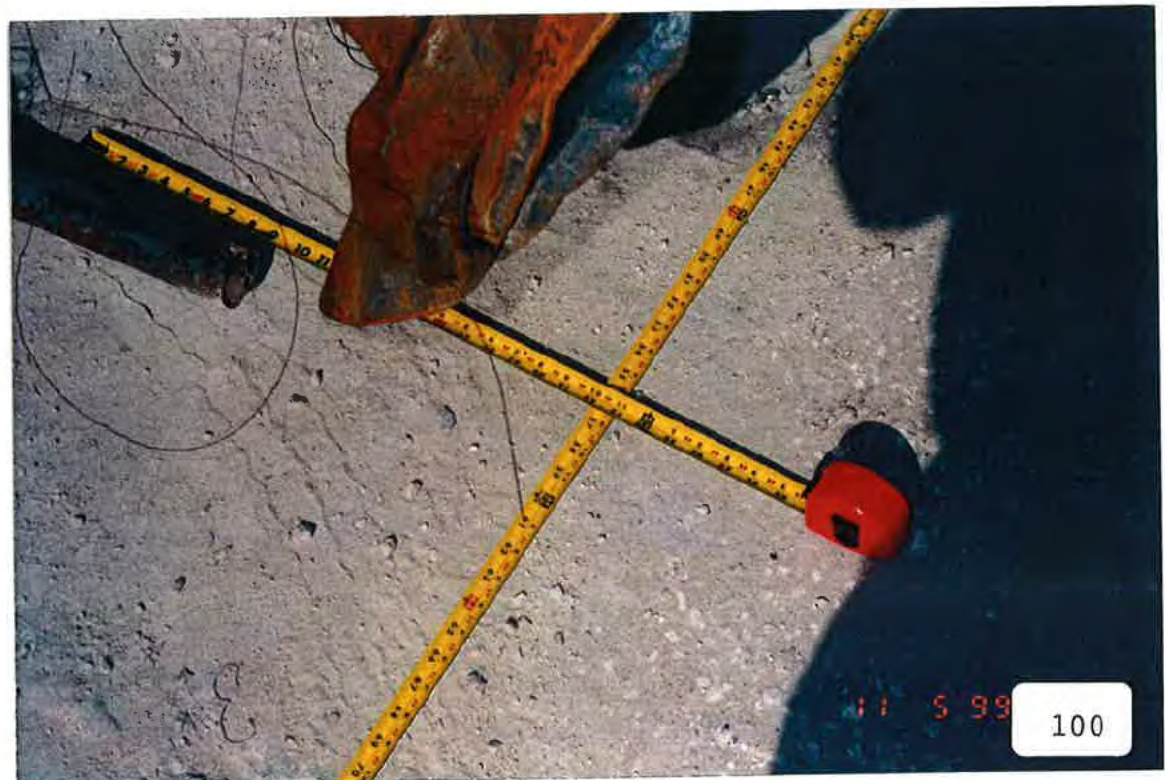














EA12-005- Chrysler -017278

12 12 76



EA12-005- Chrysler -017279



EA12-005-Chrysler-017280

12 12 78



EA12-005- Chrysler 017281

12 12 78



EA12-005- Chrysler -017282

12 12 80



EA12-005 Chrysler -017283

12 12 81



EA12-005- Chrysler 07084

12 12 82



EA12-005- Chrysler -017285

12 12 83



EA12-005- Chrysler -017286

12 12 84





EA12-005- Chrysler -017288

12 12 86



EA12-005- Chrysler -017289

12 12 87



EA12-005- Chrysler -017290



EA12-005- Chrysler 0-7291

12 12 89

EA12-005- Chrysler -017292

12 12 90



EA12-005- Chrysler -017293

12 12 91



EA12-005- Chrysler -017294



12 12 92



EA12-005- Chrysler -017295

07 12 93



EA12-005- Chrysler -017296

12 12 94



EA12-005- Chrysler -017297

12 12 95



EA12-005- Chrysler -017298

12 12 96



EA12-005- Chrysler -017299

12 12 97



EA12-005- Chrysler -017300

12 12 98



EA12-005- Chrysler 017301

12 12 99



EA12-005-Chrysler-047302

12:13:00




E42-005- Chrysler -017303

12 13 01



EA12-005- Chrysler -017304

12 13 02

A close-up photograph of a car's interior electrical connector. The connector is a multi-pin plug with several wires protruding from it. The wires are of various colors, including blue, red, and black. The connector is mounted on a dark, possibly black, plastic housing. The background is dark and out of focus, with some bright, circular bokeh lights. The overall lighting is dim, with the primary light source coming from the left, creating a strong highlight on the left side of the connector and casting the rest into shadow.

EA12-005- Chrysler -01

12 13 03



005- Chrysler

12 13 04



EA12-005- Chrysler -017307

12 3



EA1

12 13 06



EA12-005- Chrysler -017309

12 13 07



EA12-005- Chrysler -017310

12 1 08



12 13 09



EA12-005- Chrysler -017312

12 13 10





EA12-005- Chrysler -017314

12 12 01



EA12-005- Chrysler -017315

12 12 02



EA12-005- Chrysler -017316

12-12-03



EA12-005- Chrysler -0117

12 12 04



EA12-005- Chrysler -017318

12 12 05



EA12-005- Chrysler -017319

12 12 06



EA12-005- Chrysler -017320

12 12 07



EA12-005- Chrysler -017321

12 12 08



EA12-005- Chrysler -017322

12:09



EA12-005- Chrysler -017323

12 12 10



EA12-005- Chrysler -017324

12 12 11



EA12-005- Chrysler -017325

12 12 12



EA12-005- Chrysler -017326

12-12-19



EA12-005- Chrysler -017327

12 12 14



EA12-005- Chrysler -017328

12 12 15



EA12-005- Chrysler -017329

12 12 16



EA12-005- Chrysler -017330

12 12 17



EA12-005- Chrysler -017331

12 12 18



EA12-005- Chrysler -017332

2012 19



LA12-005- Chrysler -017333

12 12 20



EM 12-005- Chrysler -017334

12 12 21



EA12-005- Chrysler -017335

12 12 22



FA12-005- Chrysler -017336



EA12-006- Chrysler -017337

12/12/24



EA12-005- Chrysler -017338

12 12 25



EA12-005- Chrysler -017339

12 12 26



EA12-005- Chrysler -017340

12 12 27



EA12-005-Chrysler-017341

12 12 28



GRAND CHEROKEE

LDR 100

EA12-005- Chrysler -017342

12 12 29



GRAND

1.8L I-4

RIDGE RUNNER

EA12-005 Chrysler -017343

12 12 30





EA12-005- Chrysler -017345

12:12:32



EA 0 Chrysler-017346

12-12-33



EA12-005-Chrysler 017347

12 12 34



EA12-005- Chrysler 17348



EA12-005- Chrysler -017349

12 12 36



EA12-005- Chrysler -017350

12 12 37



EA12-005-Chrysler -017351

12 12 30

Jeep

EA12-005- Chrysler -017352

12 12 39



EA12-005- Chrysler -017353

12 12 90



EA12-005- Chrysler -017354

12 12 41



EA12-005- Chrysler -017355

12 42



EA12-005- Chrysler -017356

12 12 93



12-005- Chrysler -017357

12 44



EA12-005- Chrysler -017358

12 12 45



EA12-005- Chrysler-017359

12 12 46



EA12-005- Chrysler -017360

12 12 47



EA12-005- Chrysler

12 12 48



EA 15- Chrysler-017362

12 12 49




EA12-005- Chrysler -017363

12 12 50



12 12 5 1




EA12-005- Chrysler -017365

12 12 52



EA12-005- Chrysler -017366

12 12 53



EA12-005- Chrysler -017367

12 12 54



EA12-06 Chrysler -017368

12 12 55



EA12-005- Chrysler 017369

12 12 56



EA1 5-C ry 1-017370

12 12 57



EA12-005- Chrysler -017371

12 12 58



EA12-005- Chrysler -017372

12 12 59



EA12-005- Chrysler -017373

12 12 60



File # 002 Chrysler -017374

12 12 51



EA12-005 Chrysler-017375

12 12 62



EA12-005- Chrysler -017376

12 12 63



EA12-6-Chrysler-017377

12 12 64



EA12-005-011510-00176

12 12 85

21 61 61

12-1

EA12-90 Chrysler-017379

12 18 21

EA12-005- Chrysler -017380

12 13 15

E...ler-0...81

91 E1 21

EA12-005- Chrysler -017382

12 13 21

EA12-005- Chrysler -017383

12.1

81 81 21

EA12-005- Chrysler -017384

81 81 21

EA12-005- Chrysler -017385

02 61 21

EA12-005- Chrysler -017386



EA12-005 - Chrysler - 01-387

22 61 21



EA 005 Chrysler 0 388

12.13.23

Ford 005- Chrysler 017389

42 61 21

EA12 005 0001 017390

52 E1 21

EA12-005- Chrysler -017391

92 E1 21

EA12-005 - Chrysler - 017392

12 51 27



EA12-005 © 2007/3/05

82 61 21



EA12-005- Chrysler -017394

62 61 21

12-1

EA12-005- Chrysler -017395



05 11 21

1-21

9 8 7 6 5 4 3 2 1 2 3 4 5 6 7 8 9 10 11 12 13 14 15 16 17 18 19 20 21 22 23 24 25 26 27 28 29 30 31 32 33 34 35 36 37 38 39 40 41 42 43 44 45 46 47 48 49 50 51 52 53 54 55 56 57 58 59 60 61 62 63 64 65 66 67 68 69 70 71 72 73 74 75 76 77 78 79 80 81 82 83 84 85 86 87 88 89 90 91 92 93 94 95 96 97 98 99 100

FA12-005 - Chrysler - 017396





EA12-005- Chrysler -017397

12 13 31



EA12-005- Chrysler -017398

12 13 32



EA12-005- Chrysler -017399

12 13 33



EA12-005- Chrysler -017400

12 13 34



12-05- Chrysler -017401

12 13 35



EA12-005- Chrysler -017402

12 13 38



12 13 37



EA12-005- Chrysler -017404

11 13 38



EA12-005-Chrysl 17405

17 39



A12-005- Chrysler 017406

12 13 40



EA12-005- Chrysler -017407

12 13 41



EA12-005- Chrysler -017408

12/13/42



EA12-005- Chrysler -017409

12 13 93



EA12-005- Chrysler -017410

12 13 99



EA12-005- Chassis 7/11

12 13 45



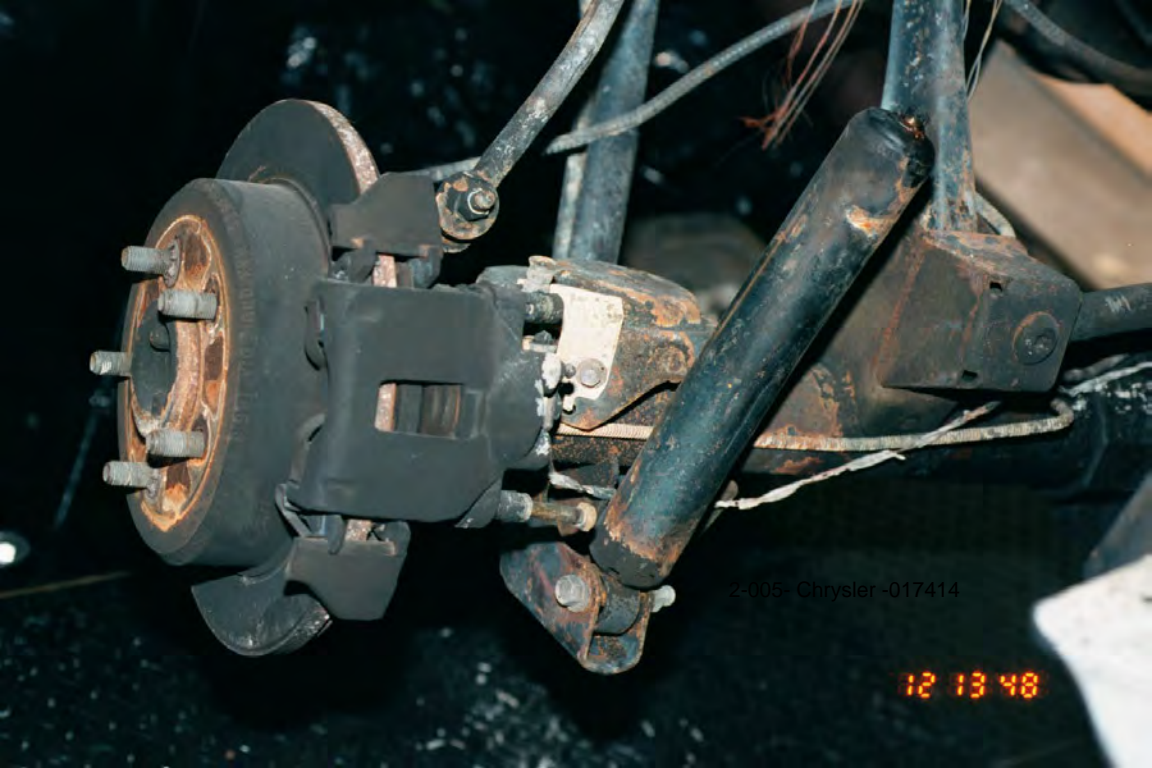
E 05

12 13 46



EA12-005- Chrysler -017413

12 13 47



2-005- Chrysler -017414

12 13 48



EA12-005- Chrysler -017415

12 13 49


A close-up photograph of a metal component, likely a piston or a similar engine part. The surface is heavily textured and shows signs of wear, including a small dark spot. The lighting is dramatic, highlighting the metallic sheen and the intricate details of the surface. A circular opening is visible in the upper right portion of the frame.

EA12-005- Chrysler -017416

12 13 50

EA12-005- Chrysler -017417

12 13 51

A close-up photograph of a metal joint, possibly a weld or a bolted connection, showing some surface wear and discoloration. The background is a blurred, light-colored surface. A digital timestamp is visible in the bottom right corner.

EA12-005- Chrysler -017418

12 13 52





EA12-005- Chrysler -017- 20

12 13 54

21 61 21

12-1

EA12-005- Chrysler-074



EA12-005- Chrysler 017422

Exhibit #52-054



EA12-005- Chrysler -017423
Exhibit #52-055
[REDACTED] v. Holy Cross, et al.



EA12-005- Chrysler -017424

Exhibit #52-061

██████████ v. Holy Cross, et al.



EA12-005- Chrysler 017425

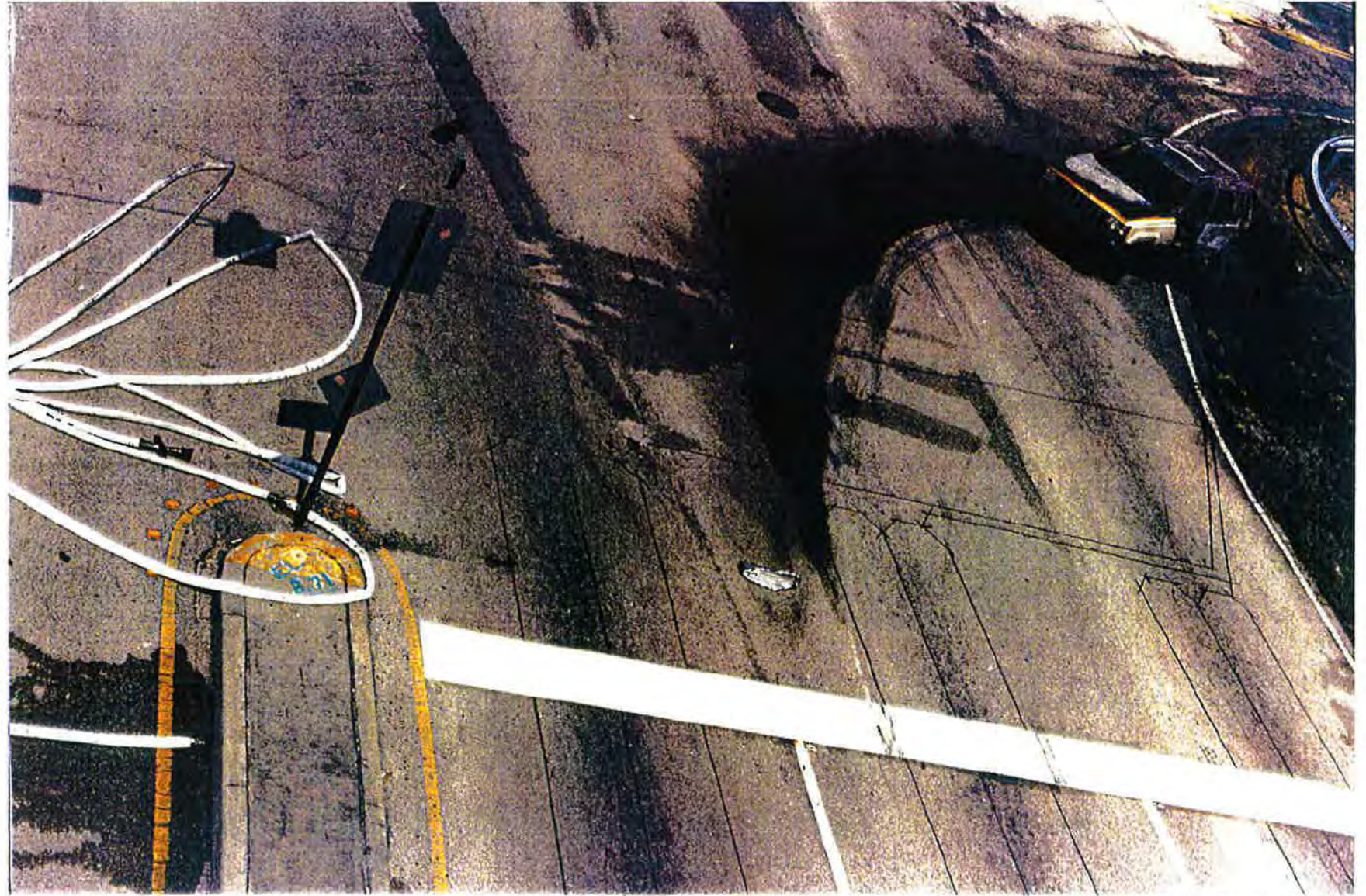
Exhibit #52-064
[REDACTED] v. Holy Cross, et al.



EA12-005- Chrysler -017426

Exhibit #52-067

█ v. Holy Cross, et al.



EA12-005- Chrysler -017427

Exhibit #52-089

█ v. Holy Cross, et al.



EA12-005- Chrysler -017428
Exhibit #52-090
[REDACTED] v. Holy Cross, et al.



EA12-005- Chrysler -017429
Exhibit #52-091
[REDACTED] v. Holy Cross, et al.



EA12-005- Chrysler -017430

Exhibit #52-092

█ v. Holy Cross, et al.



Exhibit #52-093-005- Chrysler -017431
[REDACTED] v. Holy Cross, et al.



EA12-005- Chrysler -017432

Exhibit #52-094

█ v. Holy Cross, et al.



EA12-005- Chrysler -017433

Exhibit #52-095

█ v. Holy Cross, et al.



EA12-005- Chrysler -017434

Exhibit #52-096
[REDACTED] v. Holy Cross, et al.



Exhibit #52-02A12-005- Chrysler -017435
[REDACTED] v. Holy Cross, et al.



EA12-005- Chrysler -017436

Exhibit #52-098

[REDACTED] Holy Cross, et al.



Exhibit #52-099
EA12-005-Chrysler-017437
v. Holy Cross, et al.



EA12-005- Chrysler -017438
Exhibit #52-100
[REDACTED] v. Holy Cross, et al.



Exhibit #52-101

██████████ v. Holy Cross et al.
EA12-005- Chrysler -017439



Exhibit #52-102
[REDACTED] v. Holy Cross, et al.



Exhibit #52-103
[REDACTED] v. Holy Cross et al.
EA12-005- Chrysler -017441



EA 12.005 - Chrysler - 017442

Exhibit #52-104
[REDACTED] v. Holy Cross, et al.



Exhibit #52-105 EA12-005- Chrysler -017443
v. Holy Cross, et al.



EA12-005- Chrysler -017444

Exhibit #52-106
[REDACTED] v. Holy Cross, et al.

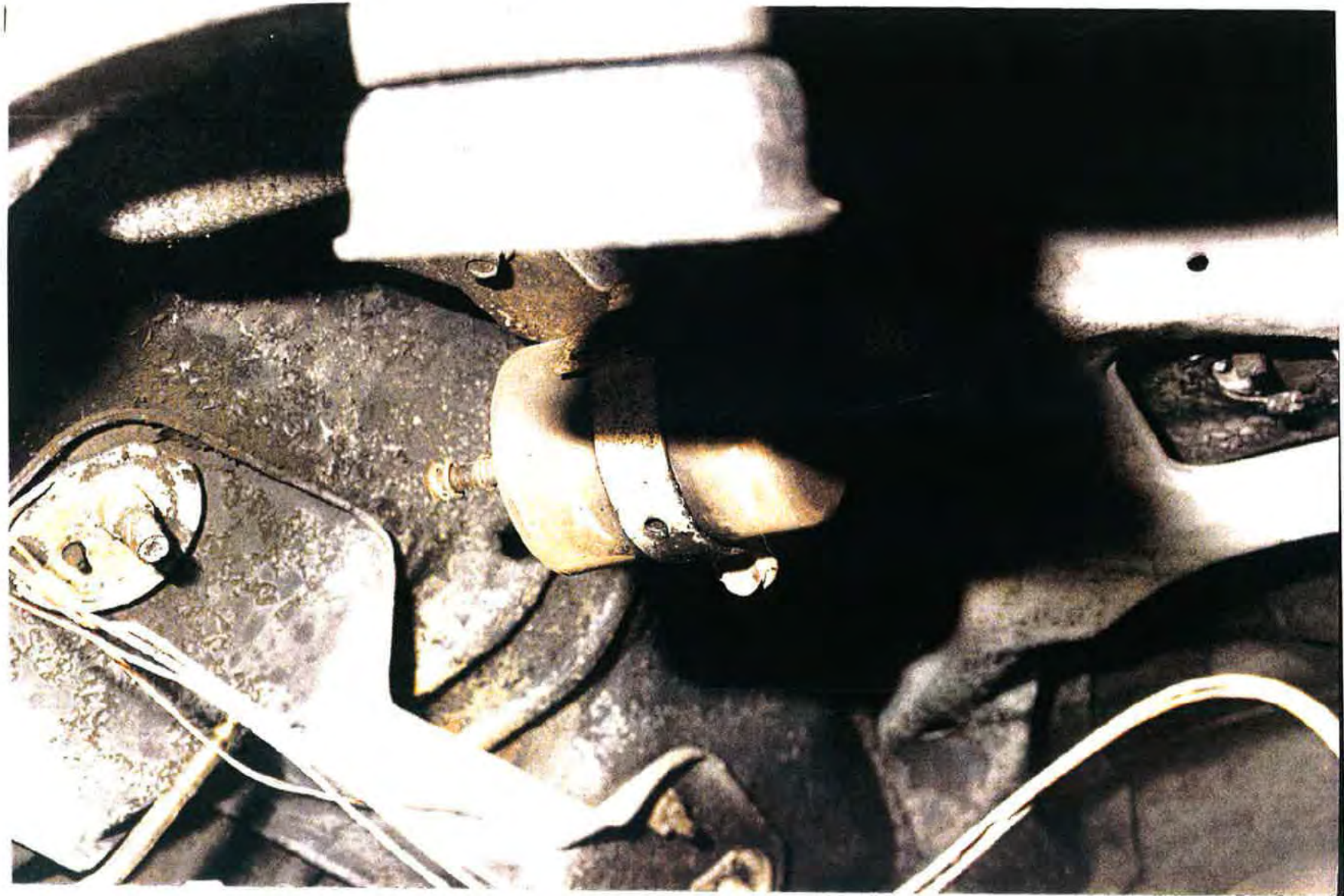


Exhibit #52-107EA12-005- Chrysler -017445
[REDACTED] v. Holy Cross, et al.



EA12-005- Chrysler -017446

Exhibit #52-108

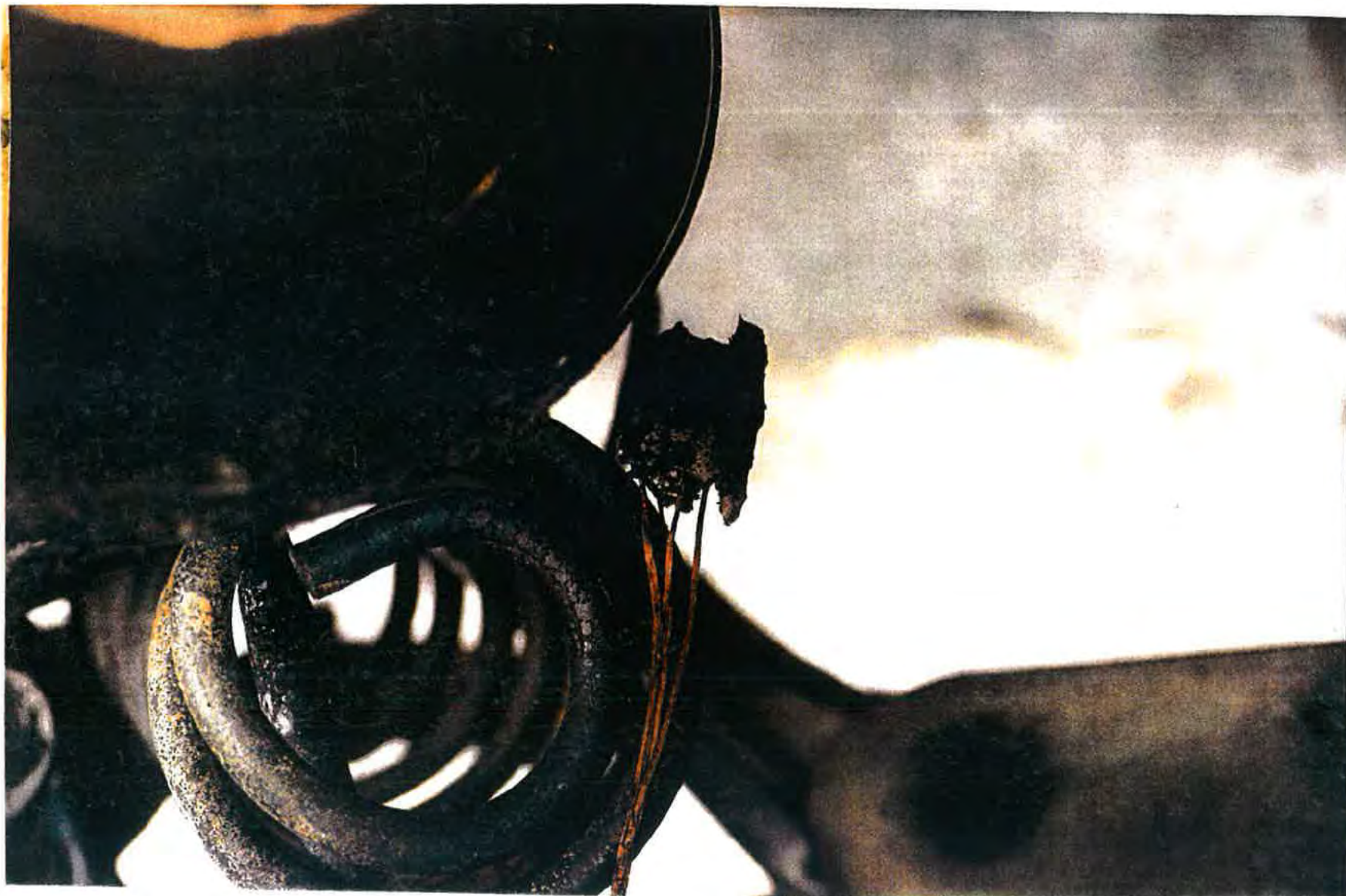
█ v. Holy Cross, et al.



Exhibit #52-109 EA13-005- Chrysler -017447
v. Holy Cross, et al.



EA12-005-Chrysler_017448



EA12-005- Chrysler -017449
Exhibit #52-111
[REDACTED] v. Holy Cross, et al.



EA12-005- Chrysler 017450

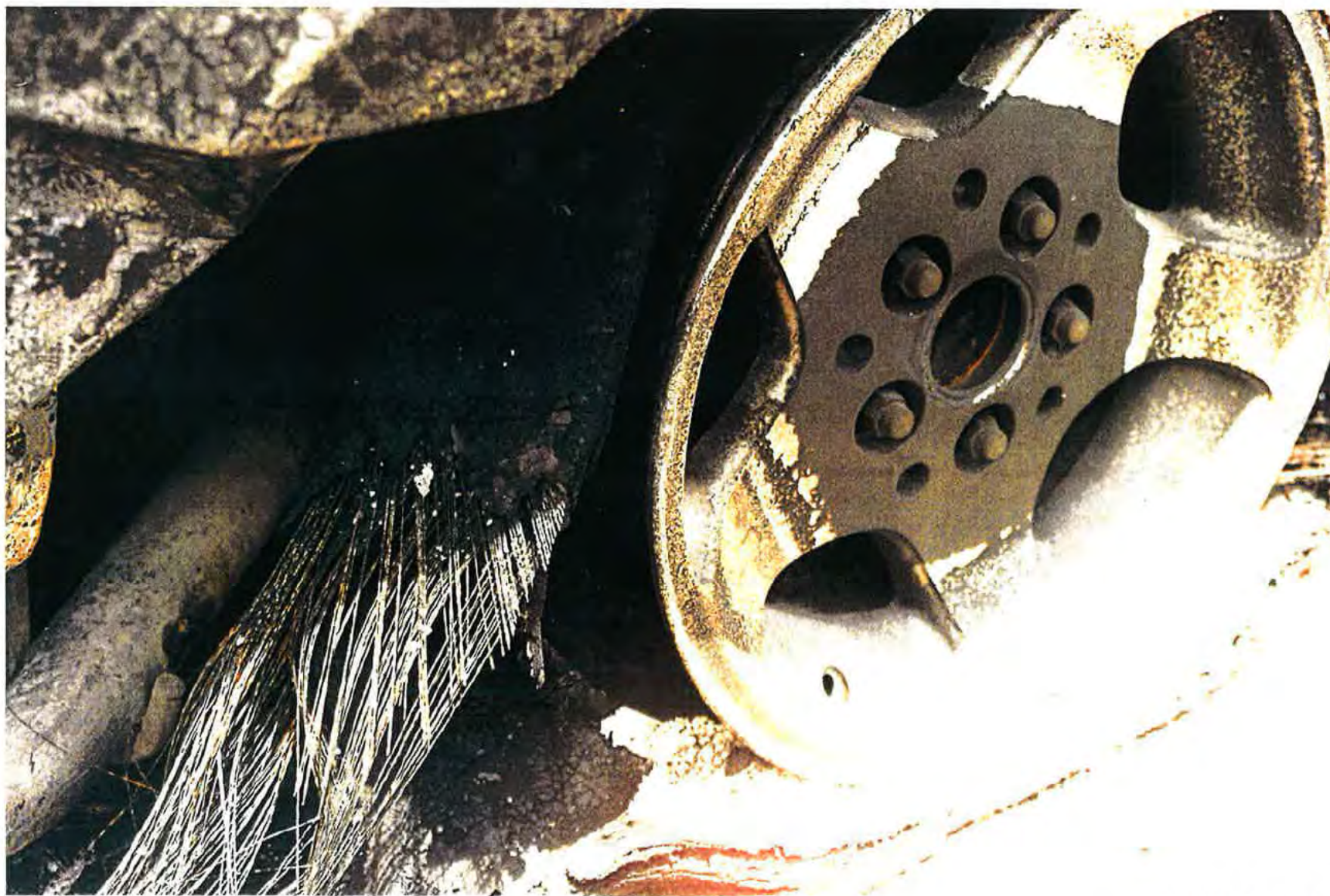
Exhibit #52-112
[REDACTED] v. Holy Cross, et al.



Exhibit #52-113
EA12-005-Chrysler-017451
v. Holy Cross, et al.



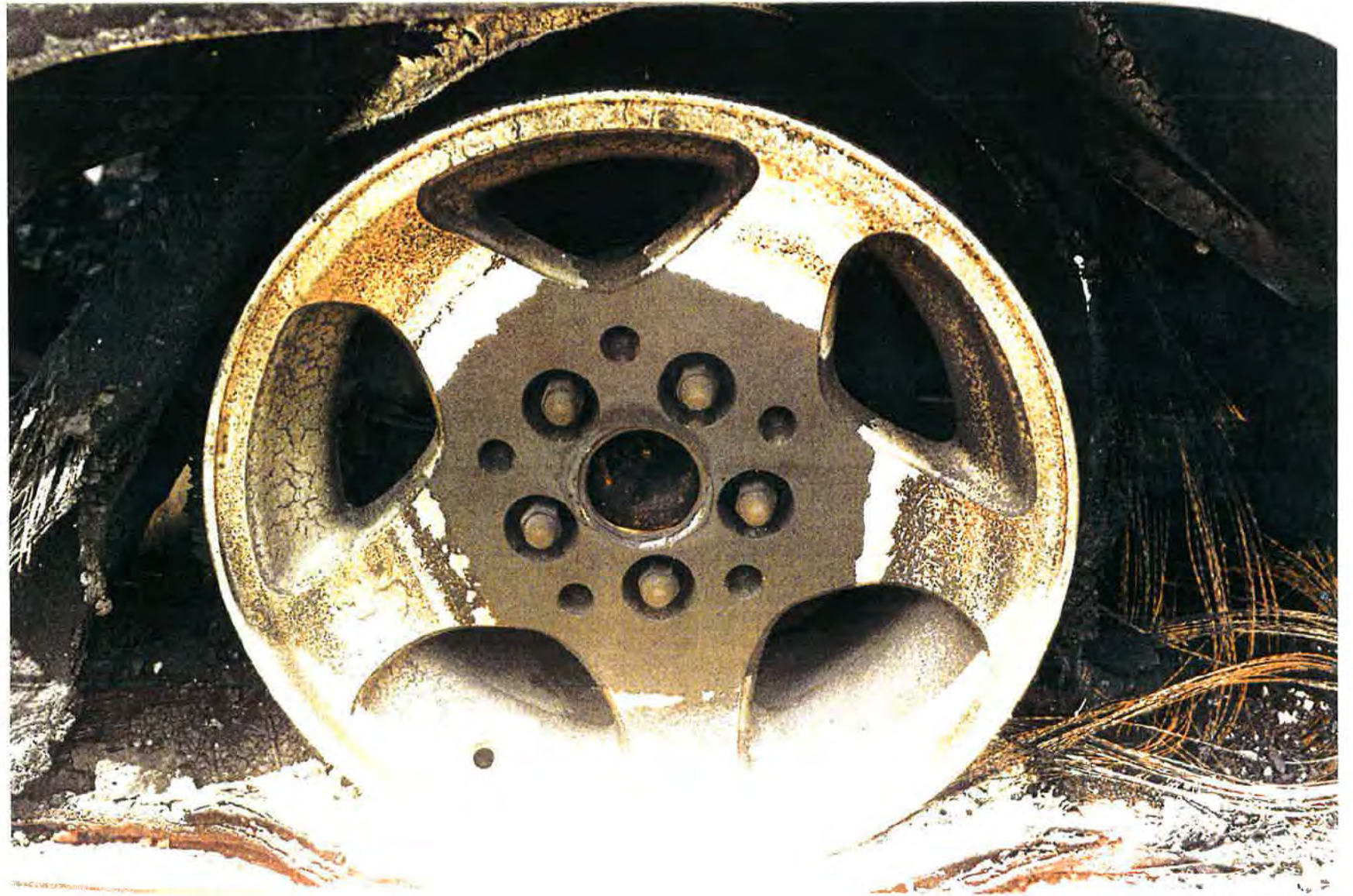
Exhibit 002 - Chrysler -017452
v. Holy Cross, et al.



EA12-005- Chrysler -017453

Exhibit #52-115

█ v. Holy Cross, et al.



EA12-005- Chrysler -017454
Exhibit #52-116
[REDACTED] v. Holy Cross, et al.



EA12-005- Chrysler -017455
Exhibit #52-117
[REDACTED] v. Holy Cross, et al.

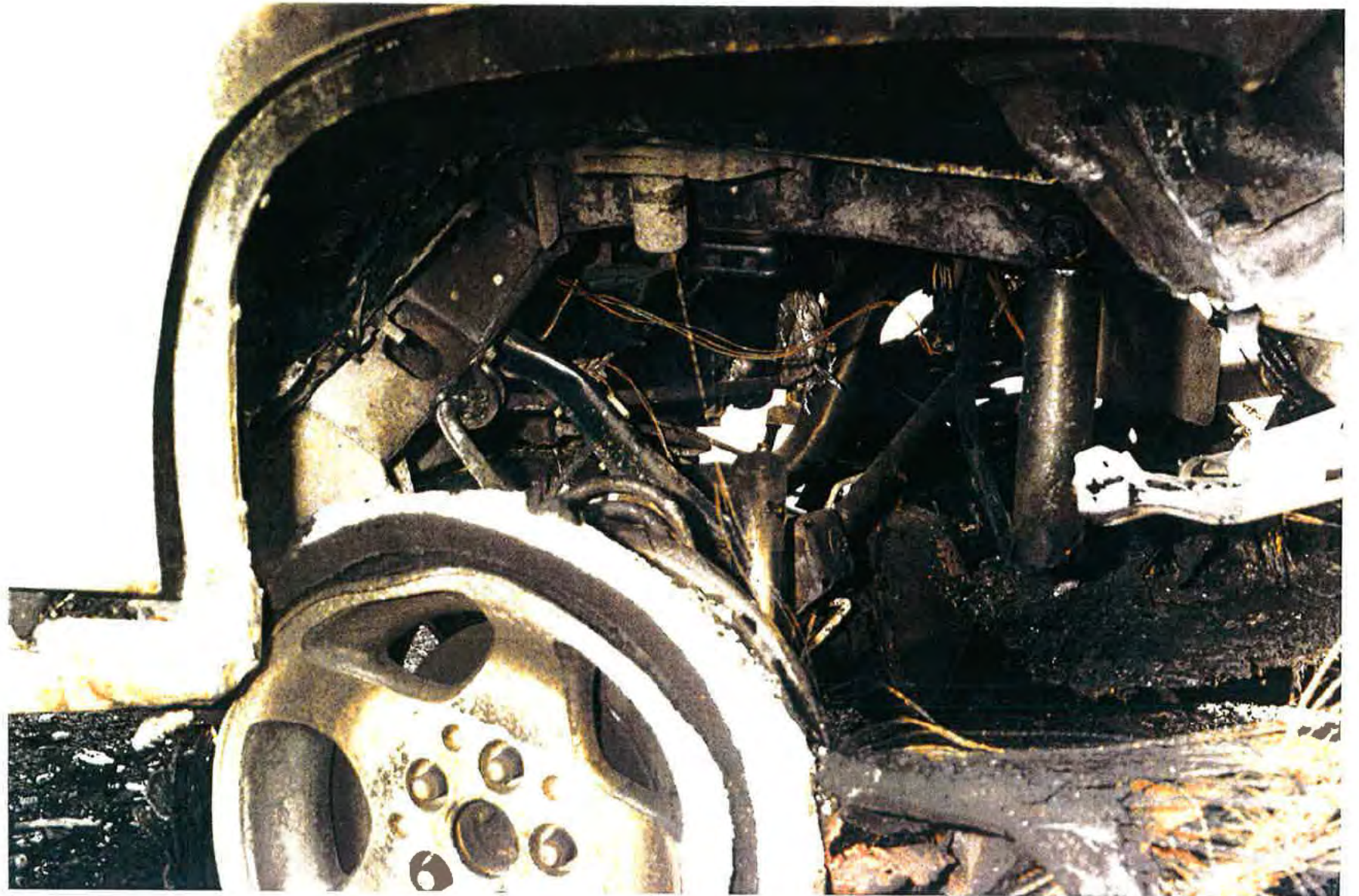


Exhibit 105 - Chrysler -017456
v. Holy Cross, et al.



Exhibit #52-119 EA12-005- Chrysler -017457
v. Holy Cross, et al.

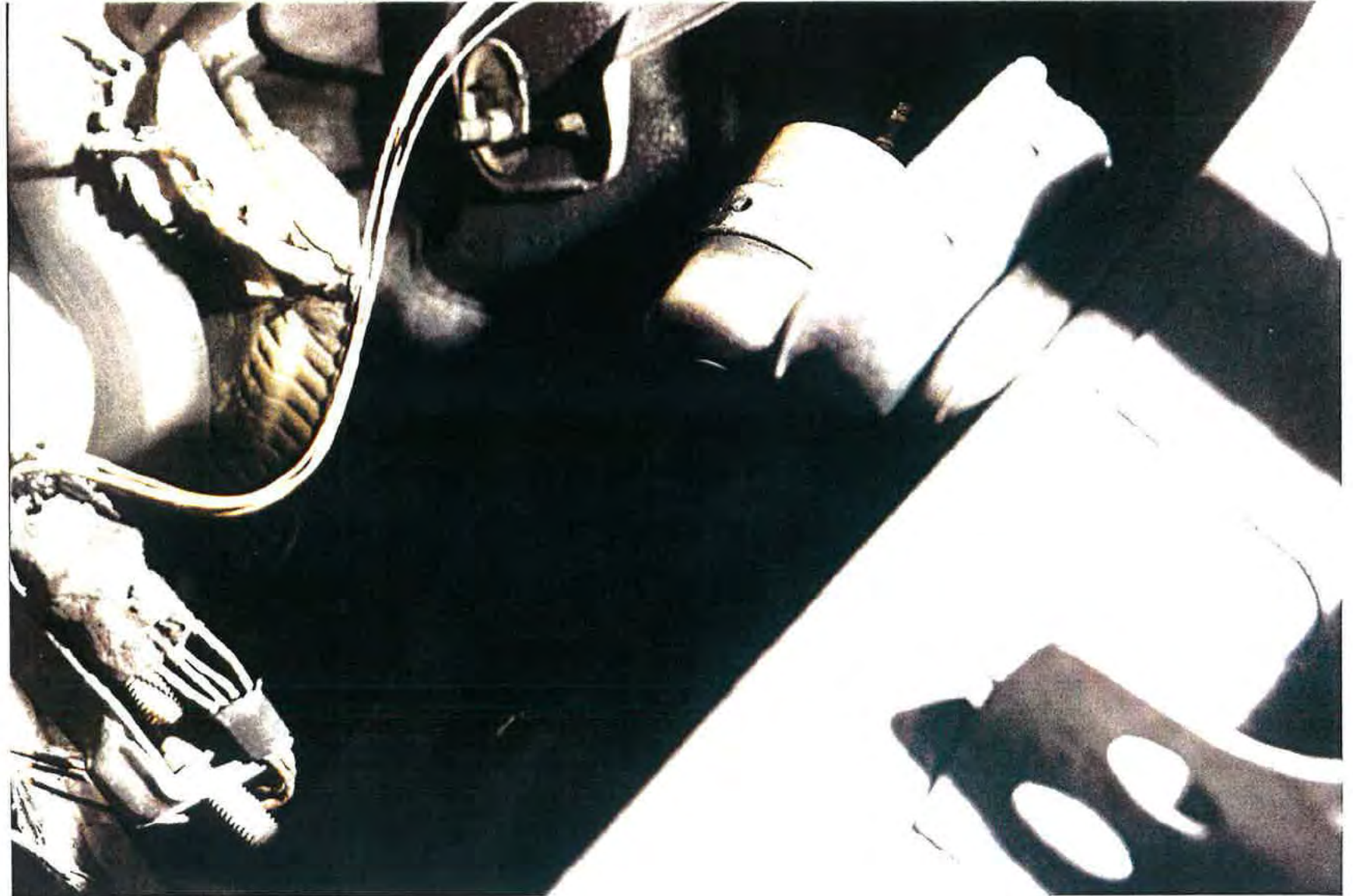


Exhibit #52-120 EA12-005- Chrysler -017458
v. Holy Cross, et al.

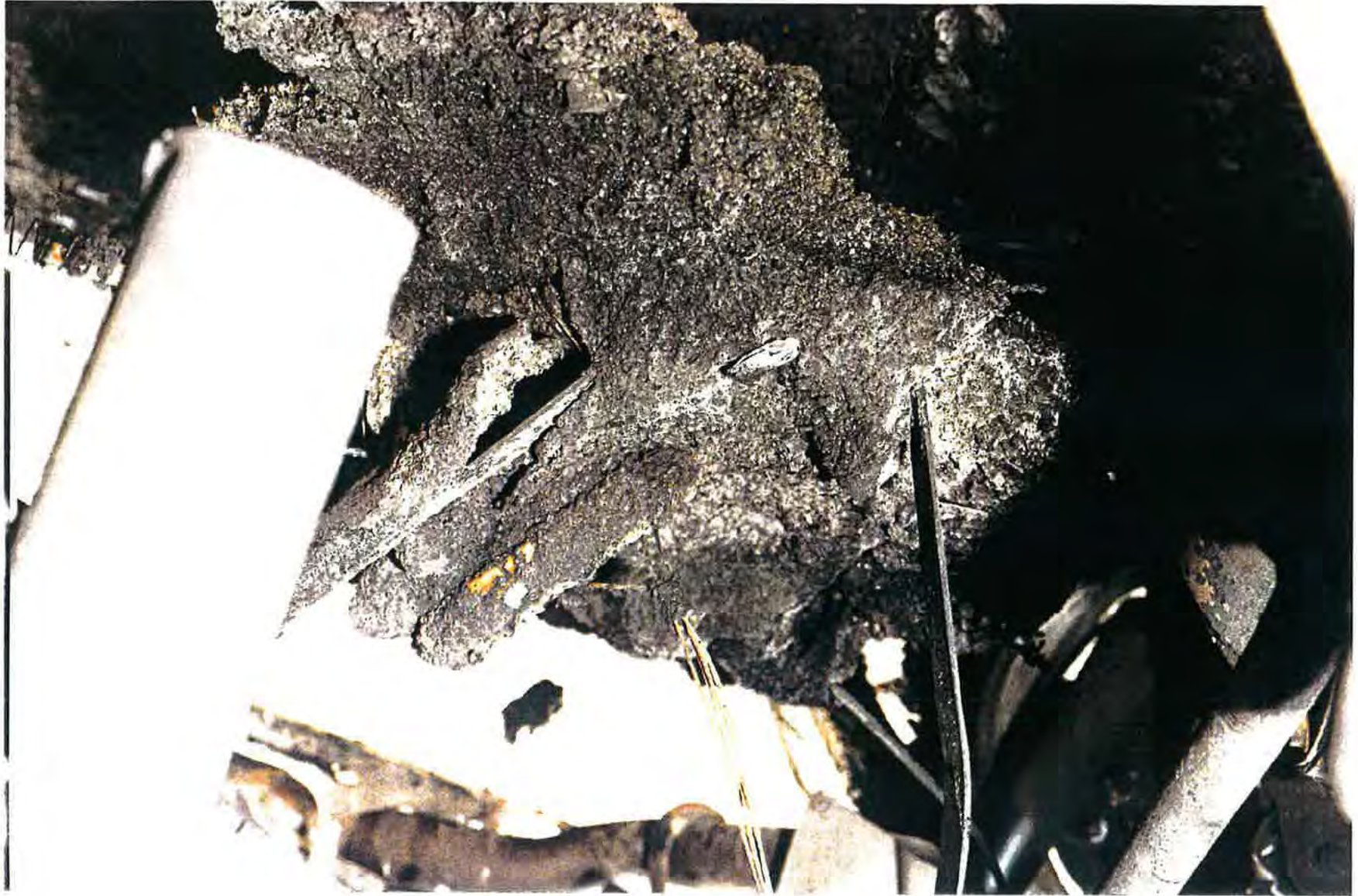


Exhibit #52-121
EA12-005- Chrysler -017459
v. Holy Cross, et al.



Exhibit #52-122
005 Chrysler -017460
v. Holy Cross, et al.



Exhibit #52-12A
12-005- Chrysler -017461
[REDACTED] v. Holy Cross, et al.



EA12-005- Chrysler -017462
Exhibit #52-124
[REDACTED] v. Holy Cross, et al.



Exhibit #52-125
v. Holy Cross, Chrysler -017463



Exhibit #52-126
EA12005-Chrysler-017464
v. Holy Cross, et al.



Exhibit #52-127
v. Holy Cross, Chrysler -017465

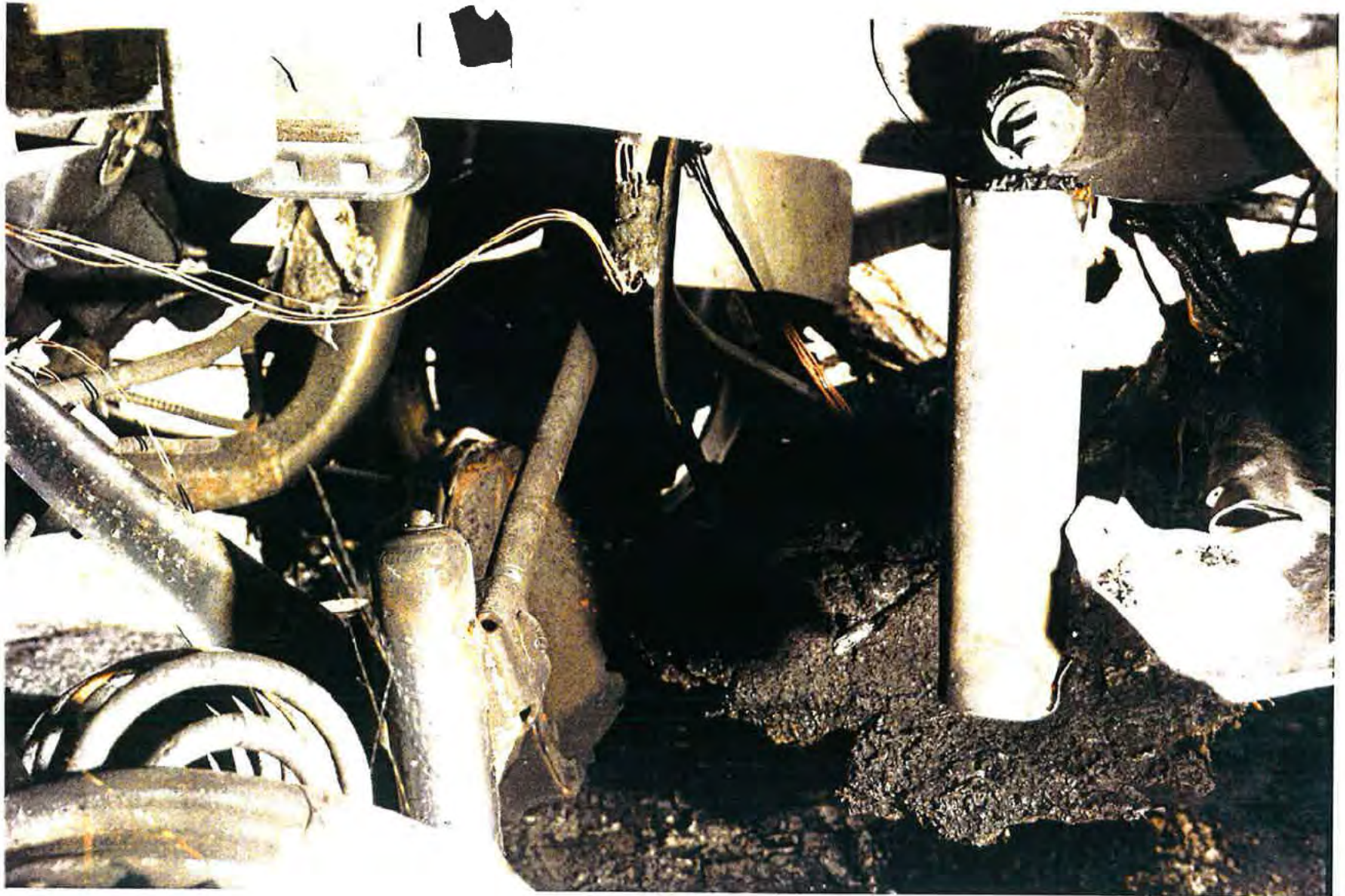


Exhibit #52-118-005- Chrysler -017466
v. Holy Cross, et al.



Exhibit #52-129-005- Chrysler -017467
[REDACTED] v. Holy Cross, et al.





Exhibit #52-131
[REDACTED] v. Holy Cross, et al. FA12-005-Chrysler-017469



Exhibit A-12-005 Chrysler -017470
v. Holy Cross, et al.



Exhibit #52-133A12-005- Chrysler -017471
v. Holy Cross, et al.



EA12-005- Chrysler -017472
Exhibit #52-134
[REDACTED] v. Holy Cross, et al.



Exhibit #52-135
E12-005 Chrysler -017473
v. Holy Cross, et al.



EA12-005-Chrysler-017474
Exhibit #52-138

[REDACTED] v. Holy Cross, et al.



Exhibit # 52-12005- Chrysler -017475
[REDACTED] v. Holy Cross, et al.



Exhibit #52-138
EA 92-005 Chrysler 017476al.
v. Holy Cross, et al.



Exhibit #52-135A12-005- Chrysler -017477
v. Holy Cross, et al.



Exhibit #52-140-5A12-005-Chrysler-017478
v. Holy Cross, et al.



Exhibit #52-141 EA12-005- Chrysler -017479
v. Holy Cross, et al.



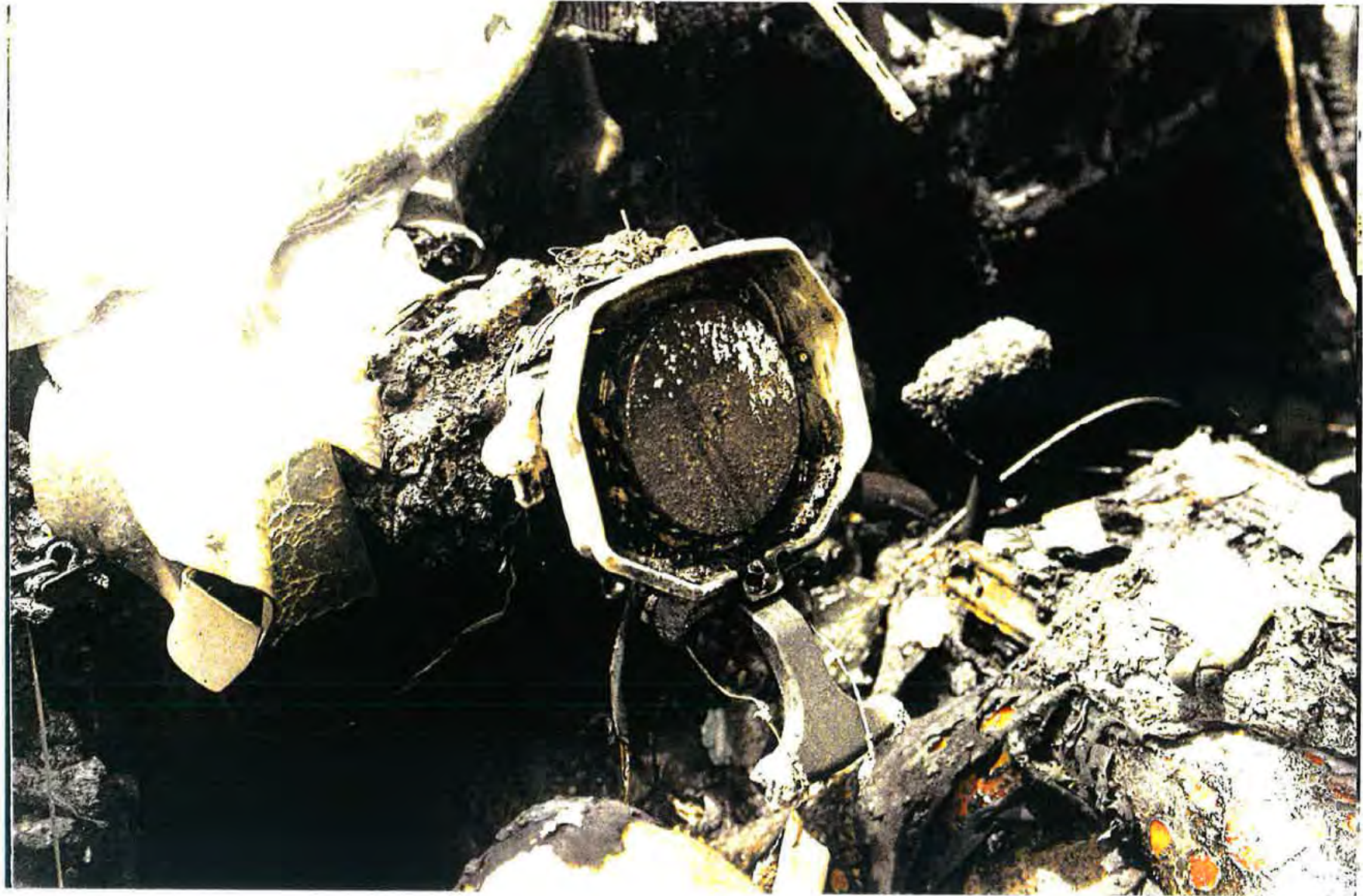
Exhibit #52-1A12-005- Chrysler -017480
[REDACTED] v. Holy Cross, et al.



EA12-005- Chrysler -017481
Exhibit #52-143
[REDACTED] v. Holy Cross, et al.



EA12-005- Chrysler -017482
Exhibit #52-144
[REDACTED] v. Holy Cross, et al.



EA12-005- Chrysler -017483
Exhibit #52-145
[REDACTED] v. Holy Cross, et al.



EA12-005- Chrysler -017484
Exhibit #52-146
[REDACTED] v. Holy Cross, et al.



Exhibit #52-147A12-005- Chrysler -017485
[REDACTED] v. Holy Cross, et al.



EA12-005- Chrysler -017486

Exhibit #52-148

██████████ v. Holy Cross, et al.



EA12-005- Chrysler -017487

Exhibit #52-149

█ v. Holy Cross, et al.



EA12-005- Chrysler -017488
Exhibit #52-150
[REDACTED] v. Holy Cross, et al.



Exhibit #52-151
[redacted] v. Holy Cross, et al. EA12-005, Chrysler-017489



Exhibit #52A18205- Chrysler -017490
[REDACTED] v. Holy Cross, et al.



Exhibit #52-153 EA12-005- Chrysler -017491
[REDACTED] v. Holy Cross, et al.



EA12-005-Chrysler-017492
Exhibit #52-154

█ v. Holy Cross, et al.



EA12-005- Chrysler -017493
Exhibit #52-155
[REDACTED] v. Holy Cross, et al.



Exhibit #52-156

██████████ v. Holy Cross, et al.

EA12-005- Chrysler -017494



Exhibit #52-157
EA12-005, Chrysler -017495
v. H61y Cross, et al.



EA12-005- Chrysler -017496
Exhibit #52-158
[REDACTED] v. Holy Cross, et al.



Exhibit #52-150
EA12-005-Chrysler-017497
v. Holy Cross, et al.



Exhibit #52-100 EA12-005- Chrysler -017498
v. Holy Cross, et al.



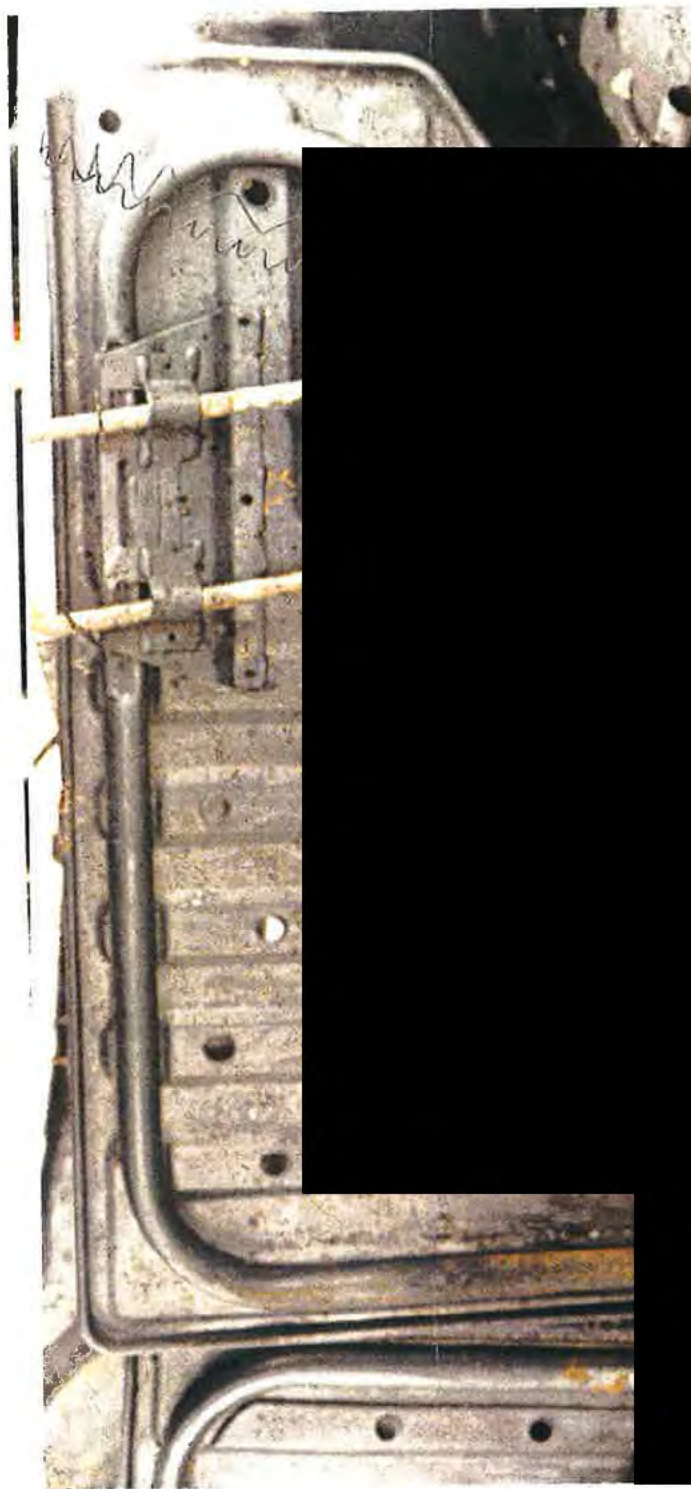
EA12-005- Chrysler -017499
Exhibit #52-161
[REDACTED] v. Holy Cross, et al.



Exhibit 101 - Chrysler -017500
v. Holy Cross, et al.



05-Chrysler-017501



EA12-005-Chrysler_017502