

INFORMATION Redacted PURSUANT TO THE FREEDOM OF  
INFORMATION ACT (FOIA), 5 U.S.C . 552(B)(6)

EA12-005

CHRYSLER

12-13-2012

Enclosure 3 – Public

1984-1992 XJ

Lawsuits and Claims

**INFORMATION Redacted PURSUANT TO THE FREEDOM OF  
INFORMATION ACT (FOIA), 5 U.S.C. 552(B)(6)**

**SUMMARY OF INPUTS RELATED TO 1984 THROUGH 1992 JEEP CHEROKEE/WAGONEER (XJ) VEHICLES**

	<b>Name</b>	<b>VIN</b>	<b>Field Reports (EAA Reports)</b>	<b>CAIR</b>	<b>Lawsuit</b>	<b>Claim</b>	<b>Notice</b>	
1.	[REDACTED]	1JCMT754XHT [REDACTED]			√			
2.	[REDACTED]	1J4FJ58S0ML [REDACTED]			√			
3.	[REDACTED]	1JCMT783XJT [REDACTED]		√				
4.	[REDACTED]	1J4FJ58S3NL [REDACTED]		√ (2)		√		
5.	[REDACTED]	1J4FJ28S4ML [REDACTED]			√			
6.	[REDACTED]	1J4FT38L4KL [REDACTED]			√			
7.	[REDACTED]	1JCWB7812GT [REDACTED]			√			
8.	[REDACTED]	1JCMR7833HT [REDACTED]			√			
9.	[REDACTED]	1JCUX7813FT [REDACTED]			√			
<b>SUBTOTALS</b>			<b>Field Reports (EAA Reports)</b>	<b>CAIR</b>	<b>Lawsuit</b>	<b>Claim</b>	<b>Notice</b>	<b>VOQ Inputs (Name)</b>
			0	2 VINs [REDACTED] also was a claim)	7	1	0	0
<b>TOTAL</b>	9 unique inputs		9 unique VINs					

 v. DCC

SEA Inspection Photos  
7/19-20/2001



EA12-005- Chrysler -010265





EA12-005- Chrysler -010266





EA12-005- Chrysler -010267





EA12-005-Chrysler -010268





EA12-005- Chrysler -010269



EA12-005- Chrysler -010270





EA12-005- Chrysler -010271





EA12-005- Chrysler -010272



EA12-005- Chrysler -010273





EA12-005- Chrysler -010274



EA12-005- Chrysler -010275





12-005- Chrysler -010276









EA12-005- Chrysler -010278





EA12-005- Chrysler 010





EA12-005- Chrysler -010280





EAT-005- Chrysler -010281





EA12-005- Chrysler -010282





EA12-005- Chrysler -010283





EA12-005- Chrysler -010284





EA12-005- Chrysler -010285





EA12-005 - Chrysler -010286



EA12-005- Chrysler -010287





EA12-005- Chrysler -010288





EA12-005- Chrysler -010289









EA12-005- Chrysler -010291





EA12-005- Chrysler -010292



EA12-005- Chrysler -010293





EA12-005- Chrysler -010294



005- Chrysler -011195





EA12-005- Chrysler -010296



EA12-005- Chrysler -010297





EA12-005- Chrysler -010298



005- Chrysler -010299





EA12-005-Chrysler-010300



EA12-005- Chrysler -010301





EA12-000- Chrysler -010302



EA1Z005 Chrysler 010303





EA12-005-Chrysler-010304



EA12-005- Chrysler -010305





EA12-005- Chrysler -010306





EA12-005- Chrysler\_010307





LA12-005- Chrysler -010308



EA12-005- Chrysler -010309





EA12-00 - Hwy 1 - 0310





EA12-005- Chrysler -010311







EA12-005- Chrysler -010313





EA12-005- Chrysler -010314



EA12-005- Chrysler -010315





EMERSON CHRYSLER -010316



005- Chrysler -010317





EA12-005- Chrysler -010318









EA 12-005- Chrysler -010320



005- Chrysler -010321





EA12-005- Chrysler -010322



EA12-005- Chrysler -010323





EA12-005- Chrysler -010324









EA12-005- Chrysler -010326



EA12-005- Chrysler -010327





EA12-005- Chrysler -010328



EA12-005- Chrysler -010





EA12-005-Chrysler -010330



EA12-005- Chrysler



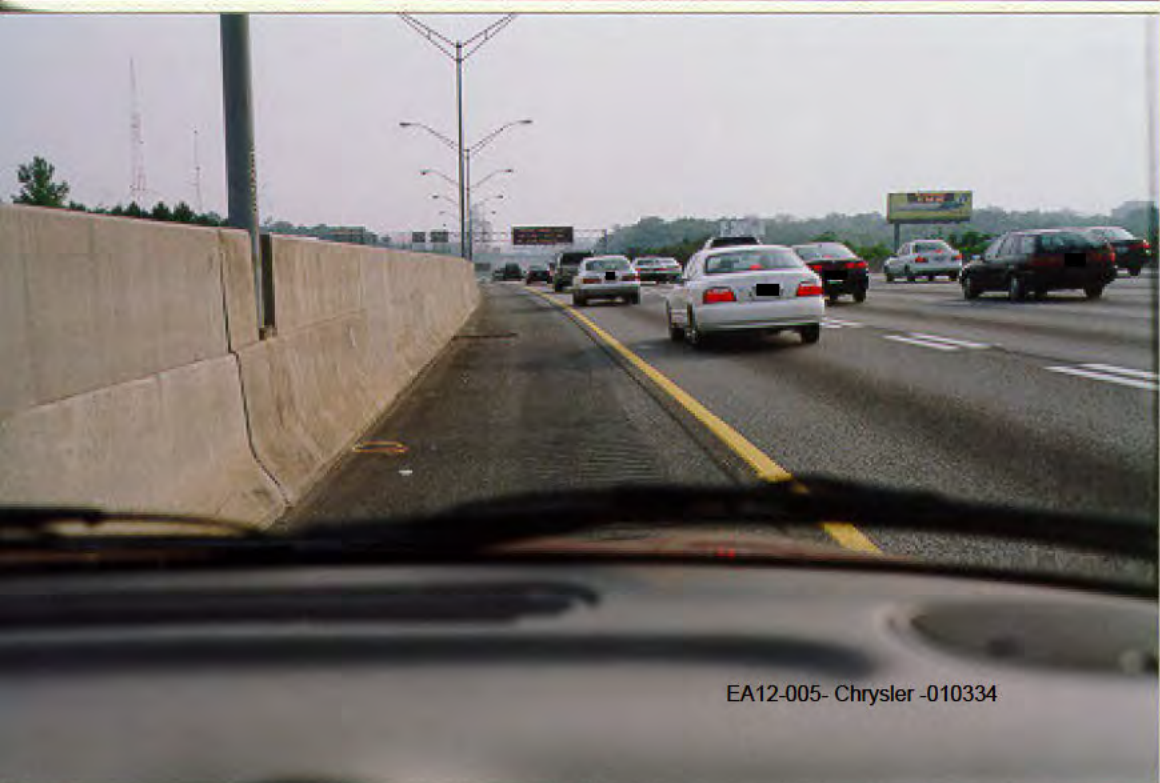


EA12-005- Chrysler -010332

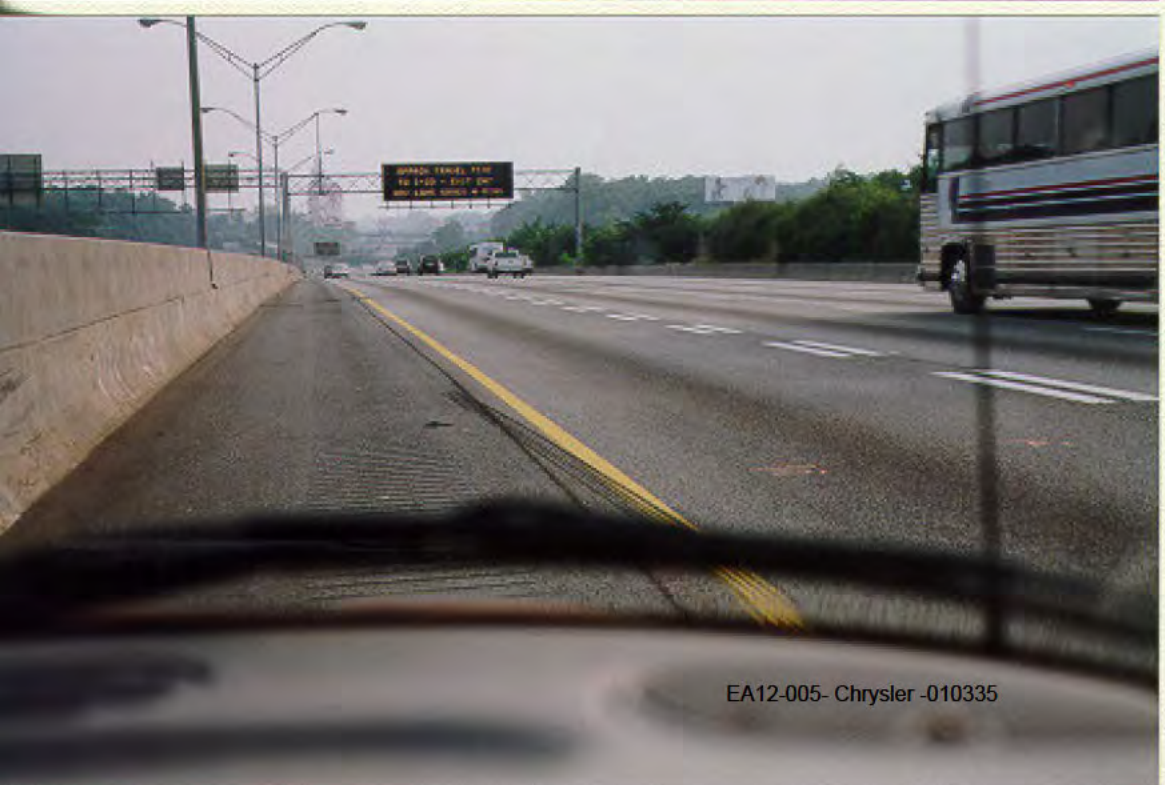


EA12-005- Chrysler -010333





EA12-005- Chrysler -010334



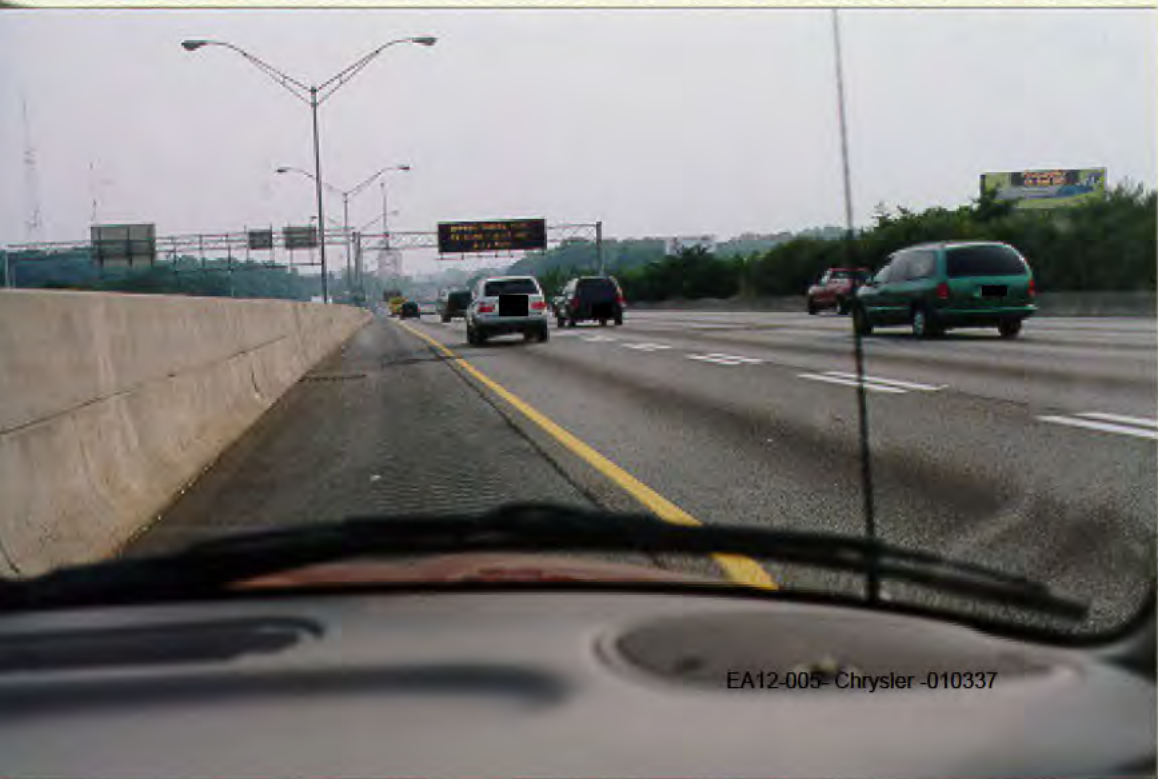
EA12-005- Chrysler -010335





EA12-005-Chrysler-010336



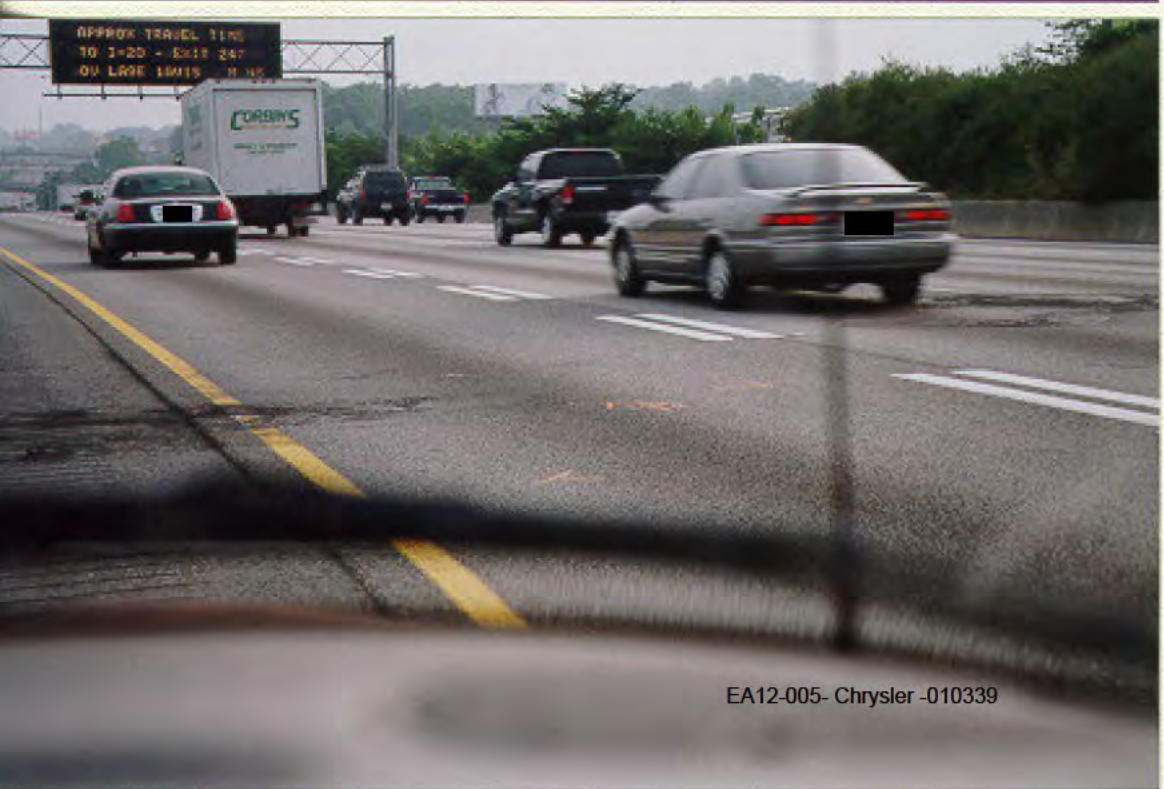


EA12-005- Chrysler -010337





EA12-005- Chrysler -010330



EA12-005- Chrysler -010339









EA12-005- Chrysler -010341







EA12-005- Chrysler -010343



# **NOBLE ENGINEERING**

1090 EUGENIA PLACE, SUITE 200

CARPINTERIA, CALIFORNIA 93013

(805) 566-6672

 V. FORD

## **VEHICLE 2 TANK INSPECTION PHOTOGRAPHS**

**JUNE 18, 2002**

**AUTOMOTIVE ACCIDENT RESEARCH AND ANALYSIS**

EA12-005-Chrysler-010344



VEH 2  
TANK







18 00



EA12-005- Chrysler-010346





EA12-005- Chrysler -010347

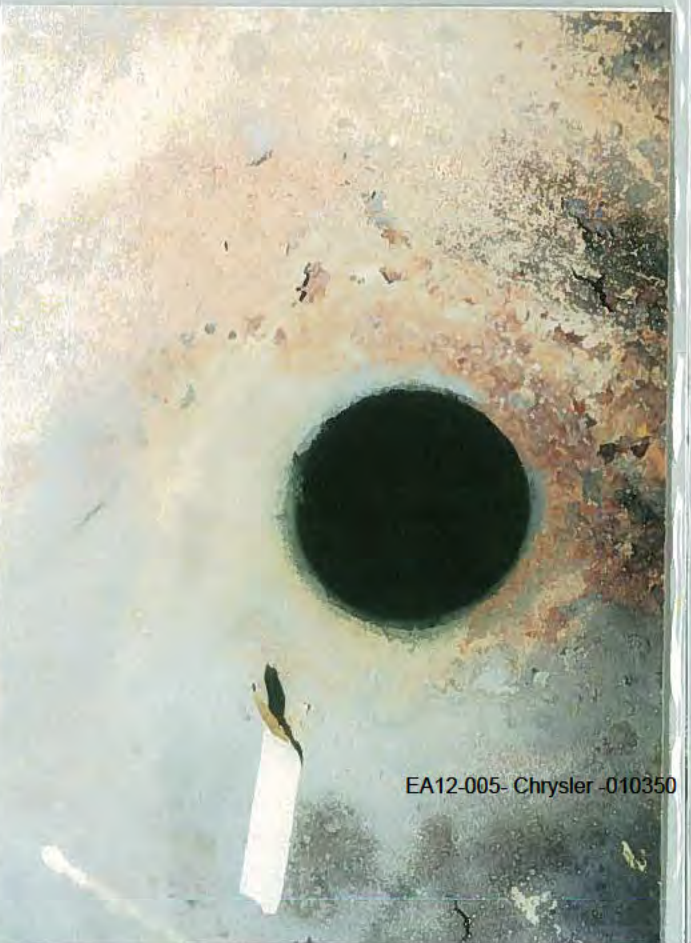












EA12-005- Chrysler -010350

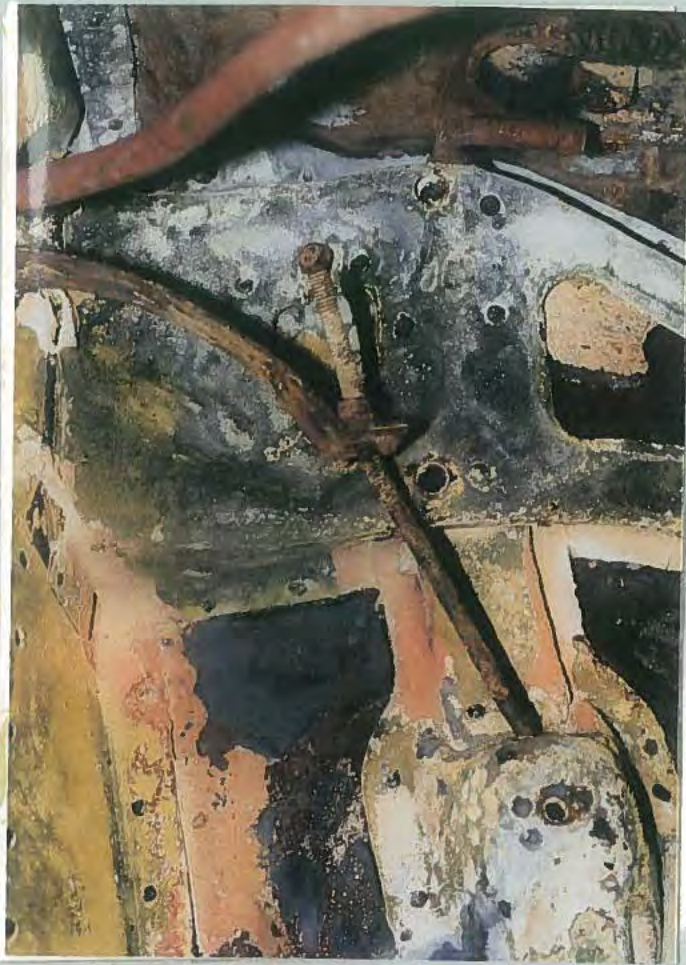












EA12-005- Chrysler 310353

330575 2510-100

330575 2510-100





EA12-005- Chrysler -010354









EA12-005 Chrysler .010156

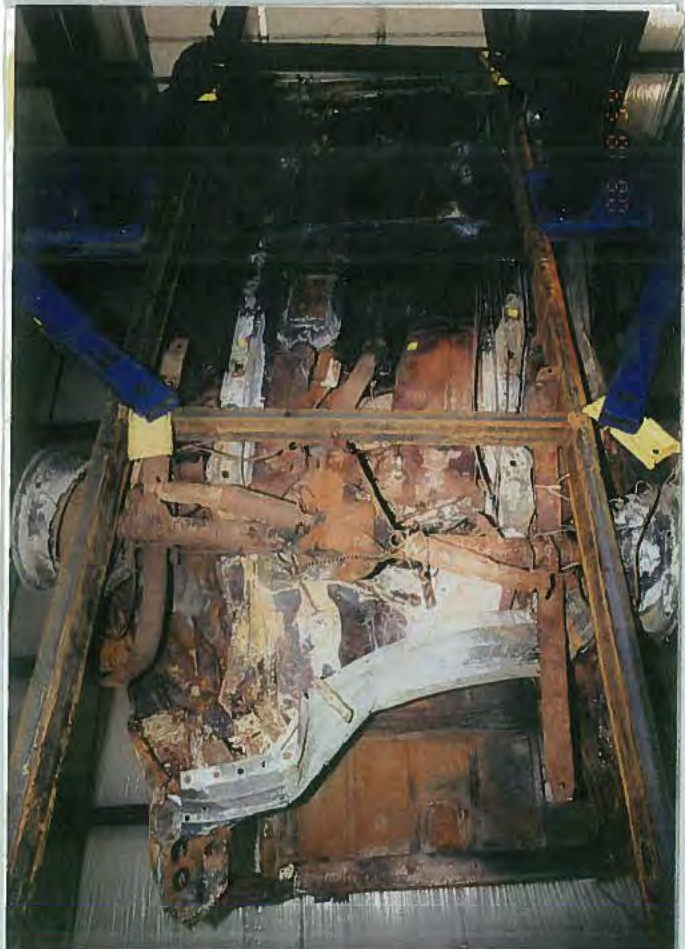


SAFARI 33100-000  
4800 737-CAT

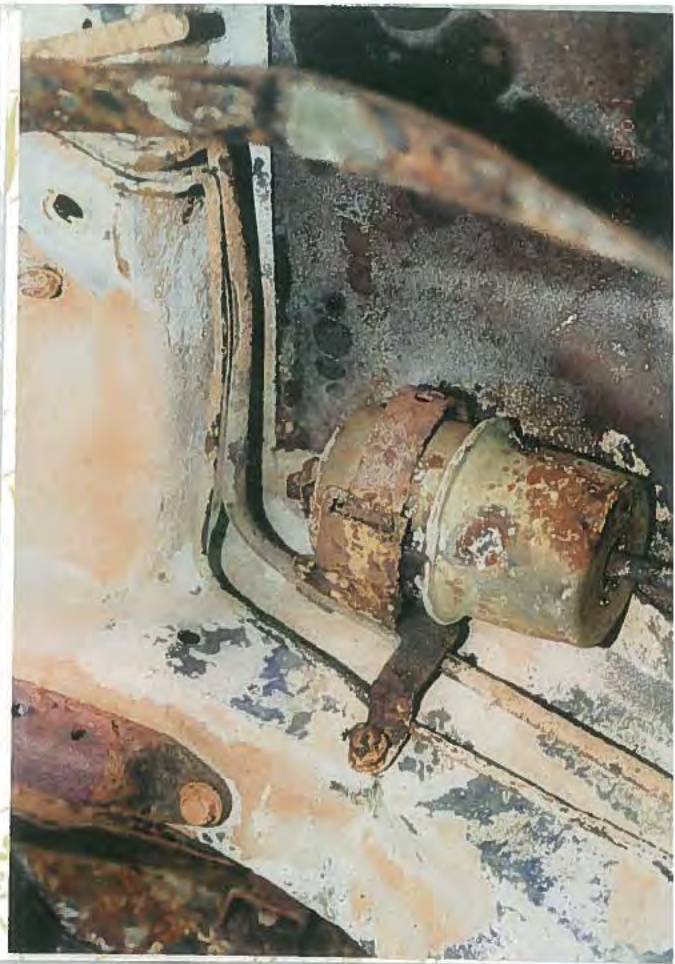


EA 12-005 Chrysler -010357









EA12-005- Chrysler -010359



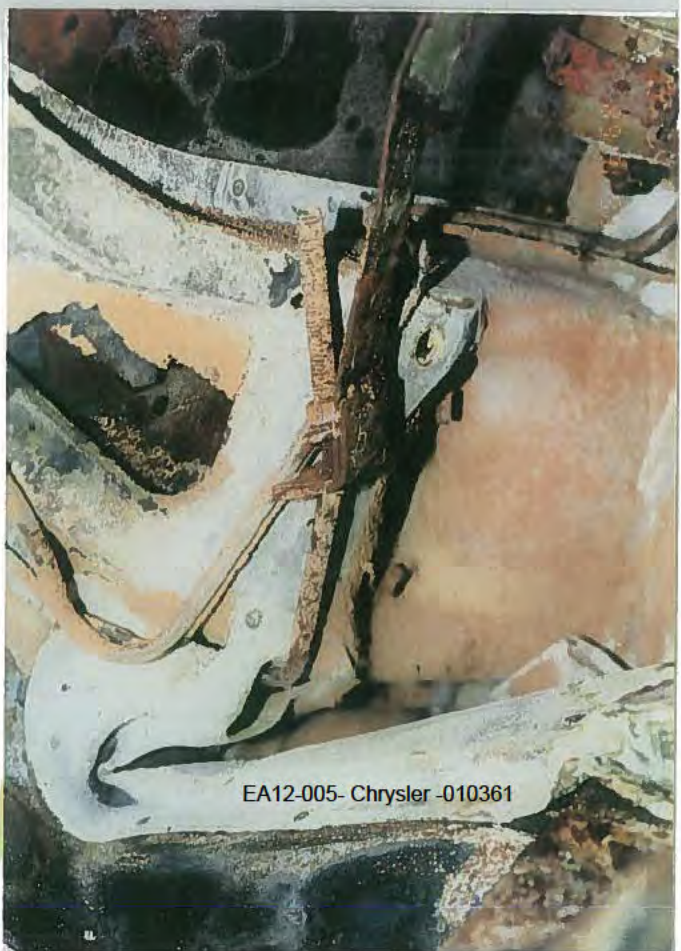


EA12-005- Chrysler -010360



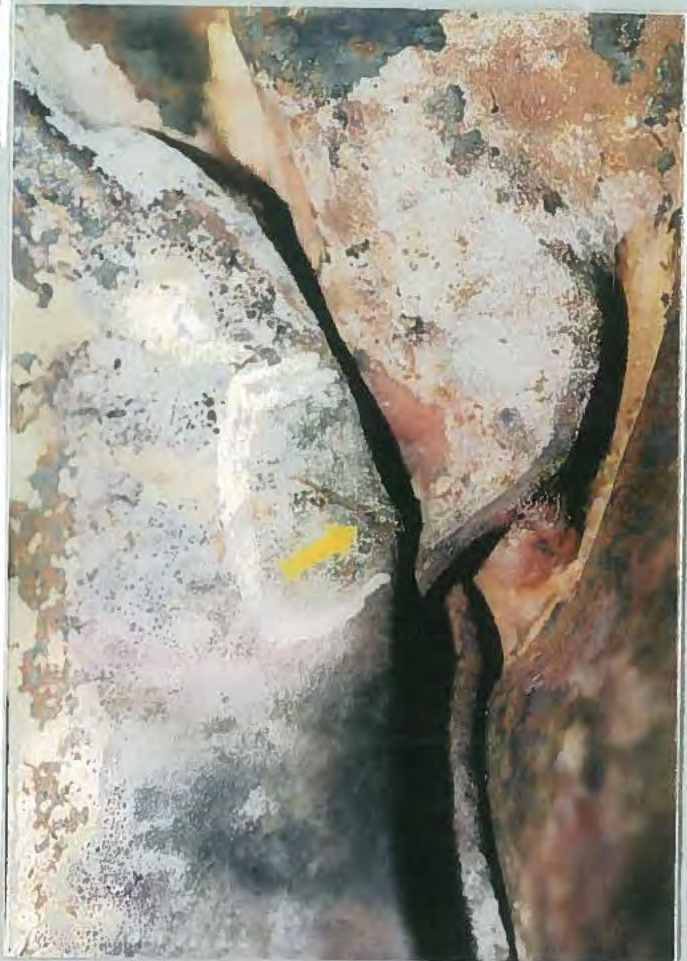
6

EA12-005-010361



EA12-005- Chrysler -010361



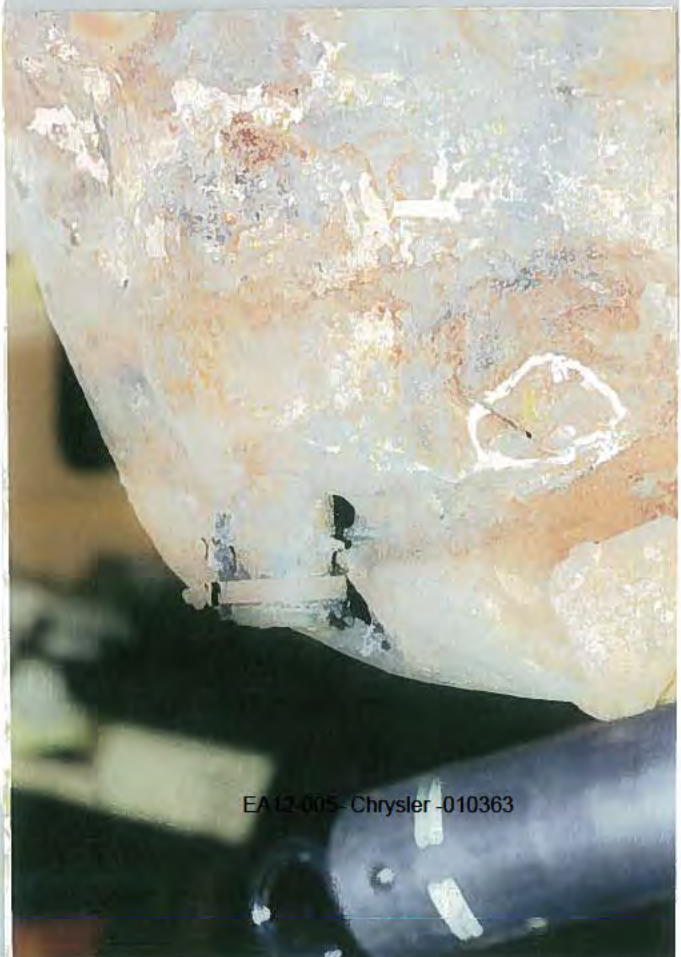


EA12-805-Chrysler-010362

2005-03-08 10:00:00

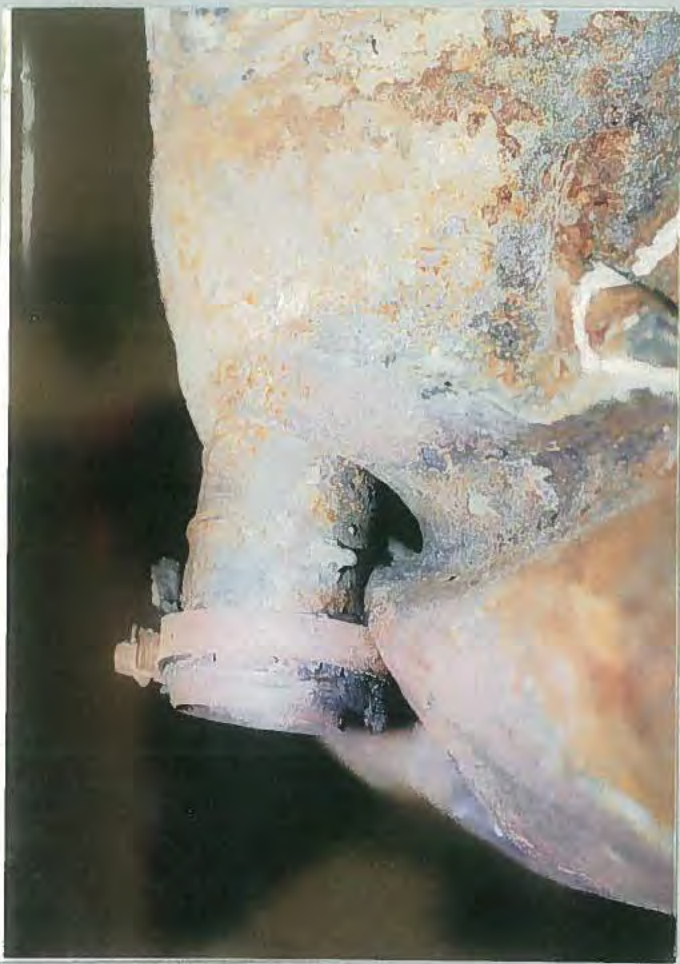
2005-03-08 10:00:00





EA12-005-Chrysler-010363





EA12-005- Chrysler -010364



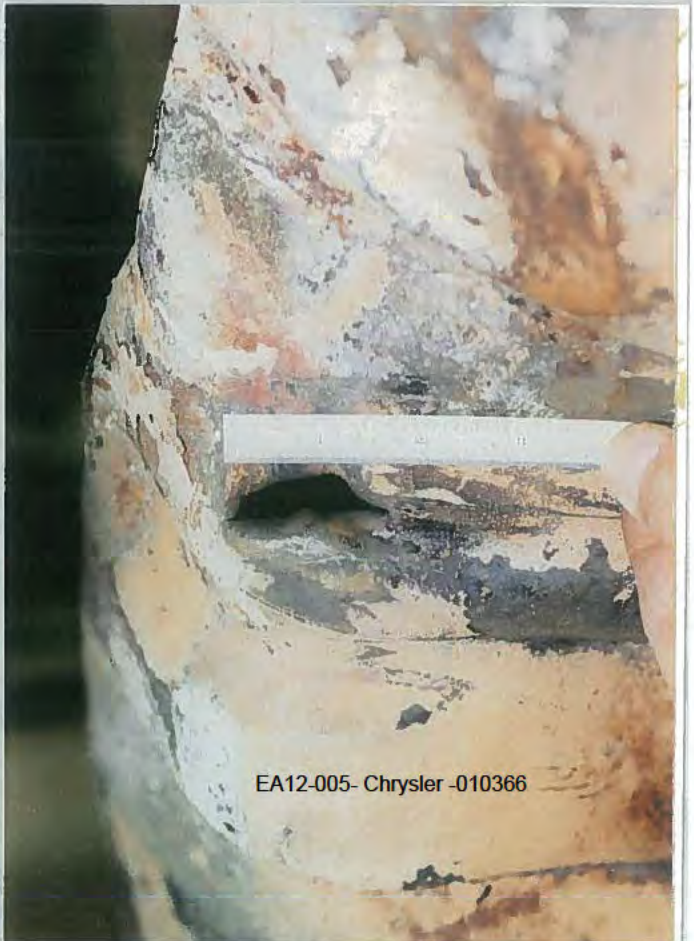
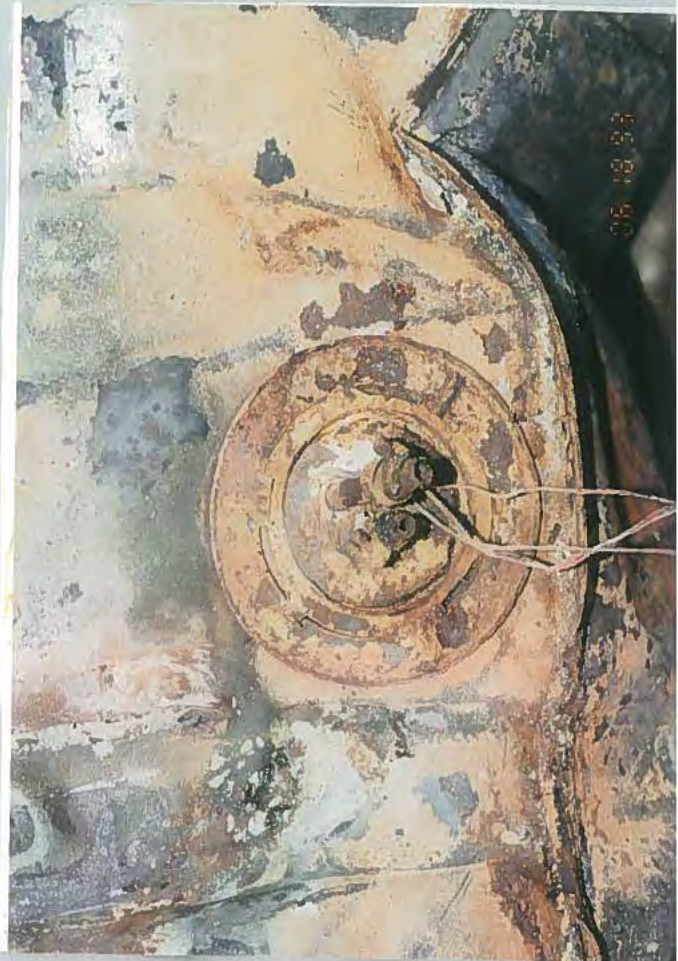


EA12-005 Chrysler 0910365



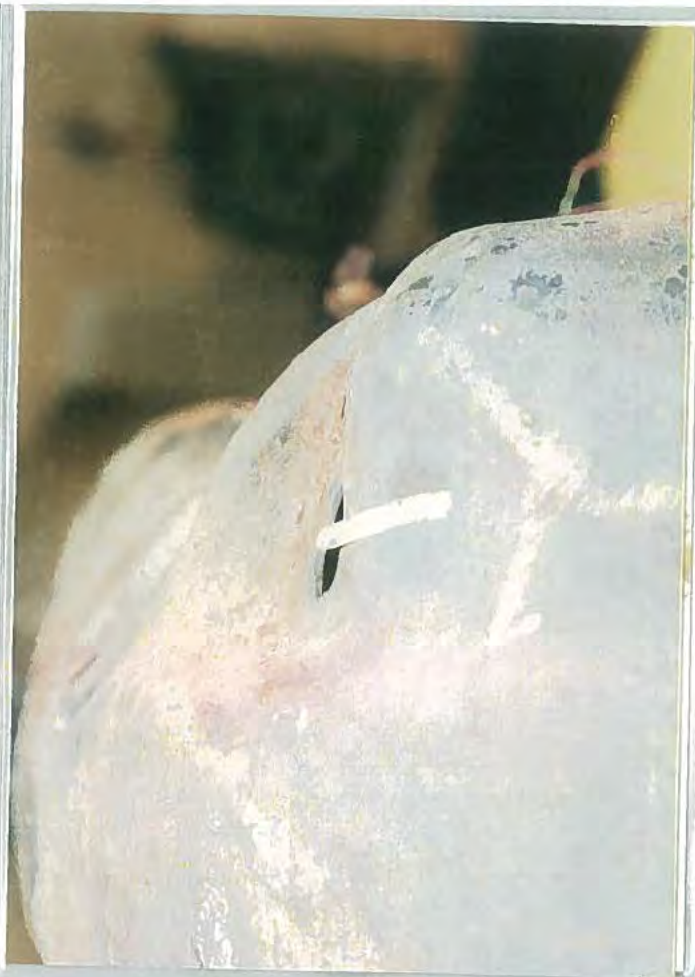
EA12-005- Chrysler -010366

EA12-005- Chrysler -010366



EA12-005- Chrysler -010366





EA12-005- Chrysler -010367

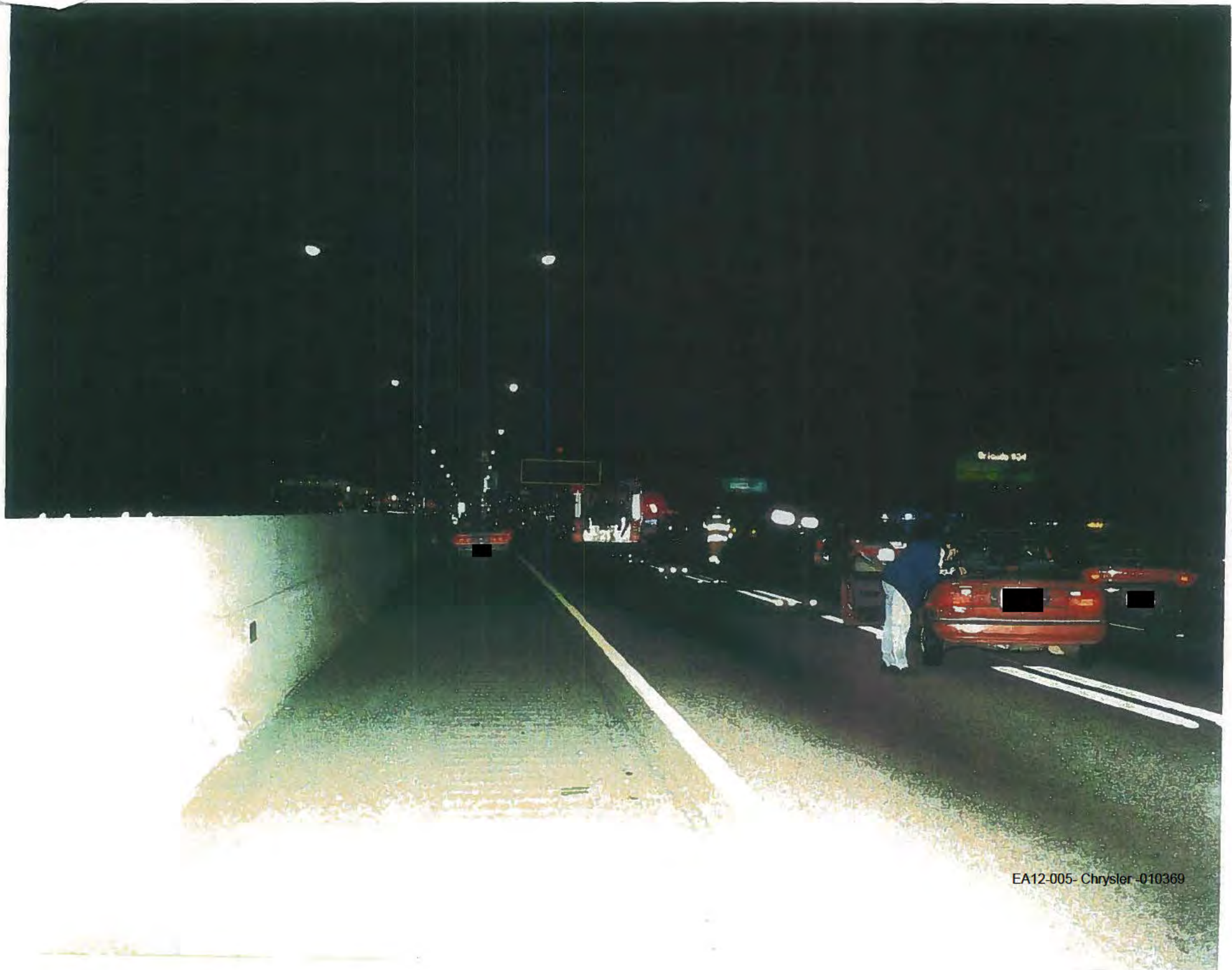


1  
STEEL V8000-000

2018.05.21. 2.15.15  
1000-767-077

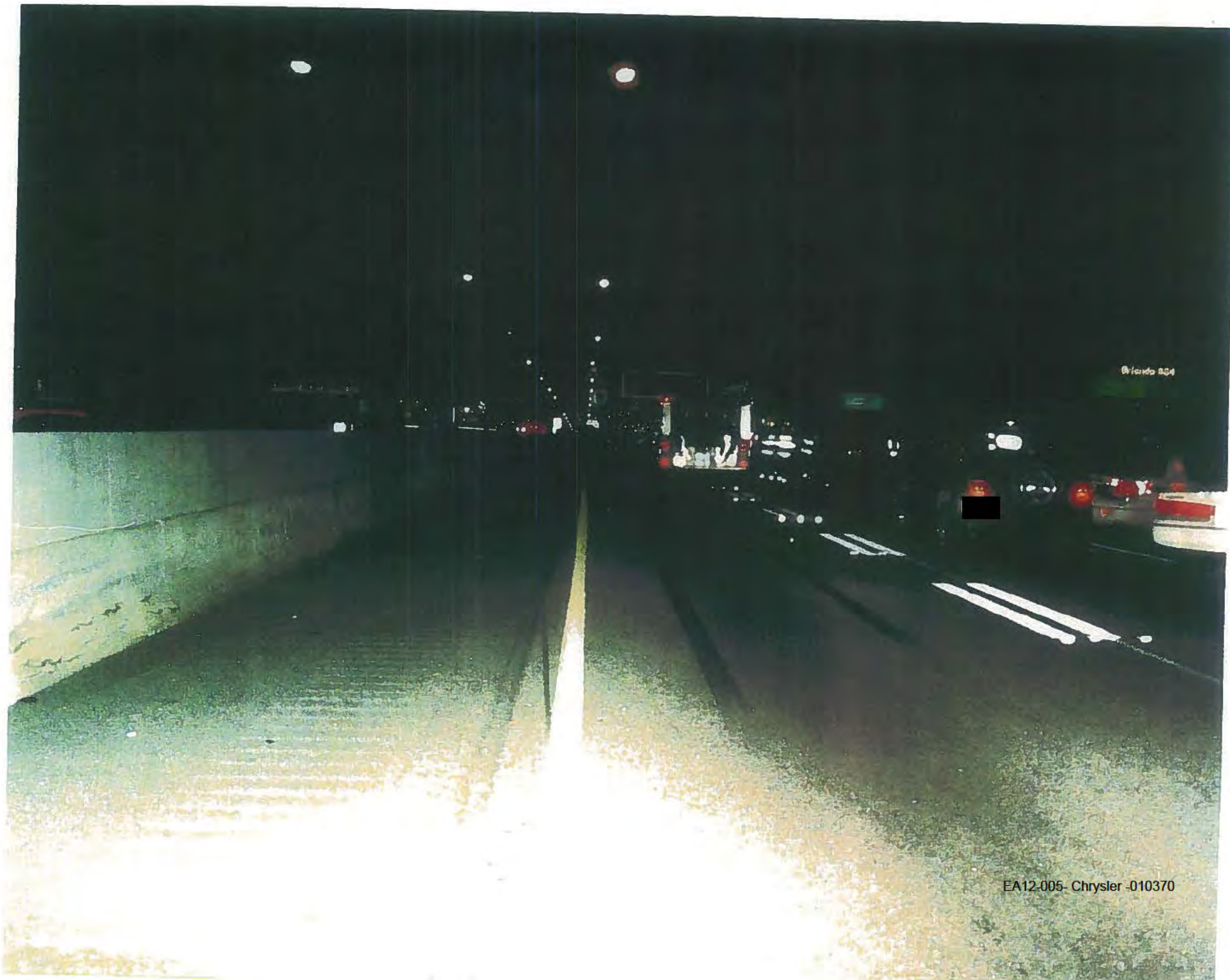






EA12-005- Chrysler -010369





Orlando 834

EA12-005- Chrysler -010370





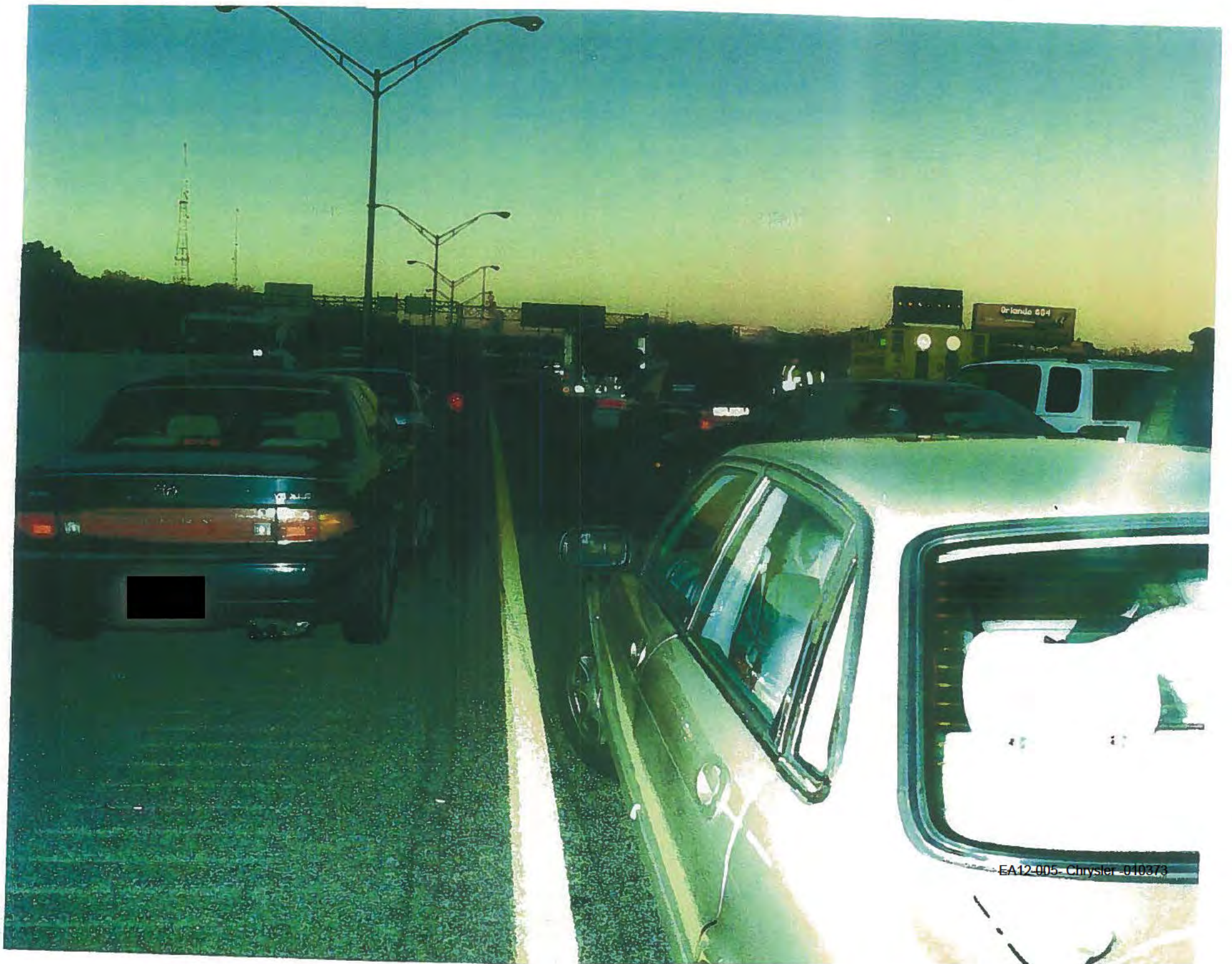
EA12-005- Chrysler -010371





EA12-005-Chrysler-010372





EA12-005-Chrysler-010373





EA12-005- Chrysler -010374









EA12-005-Chrysler-010376





EA12-005-Chrysler\_010377





EA12-005-Chrysler-010378





EA12-005-Chrysler\_010379





EA12-005-Chrysler-010380





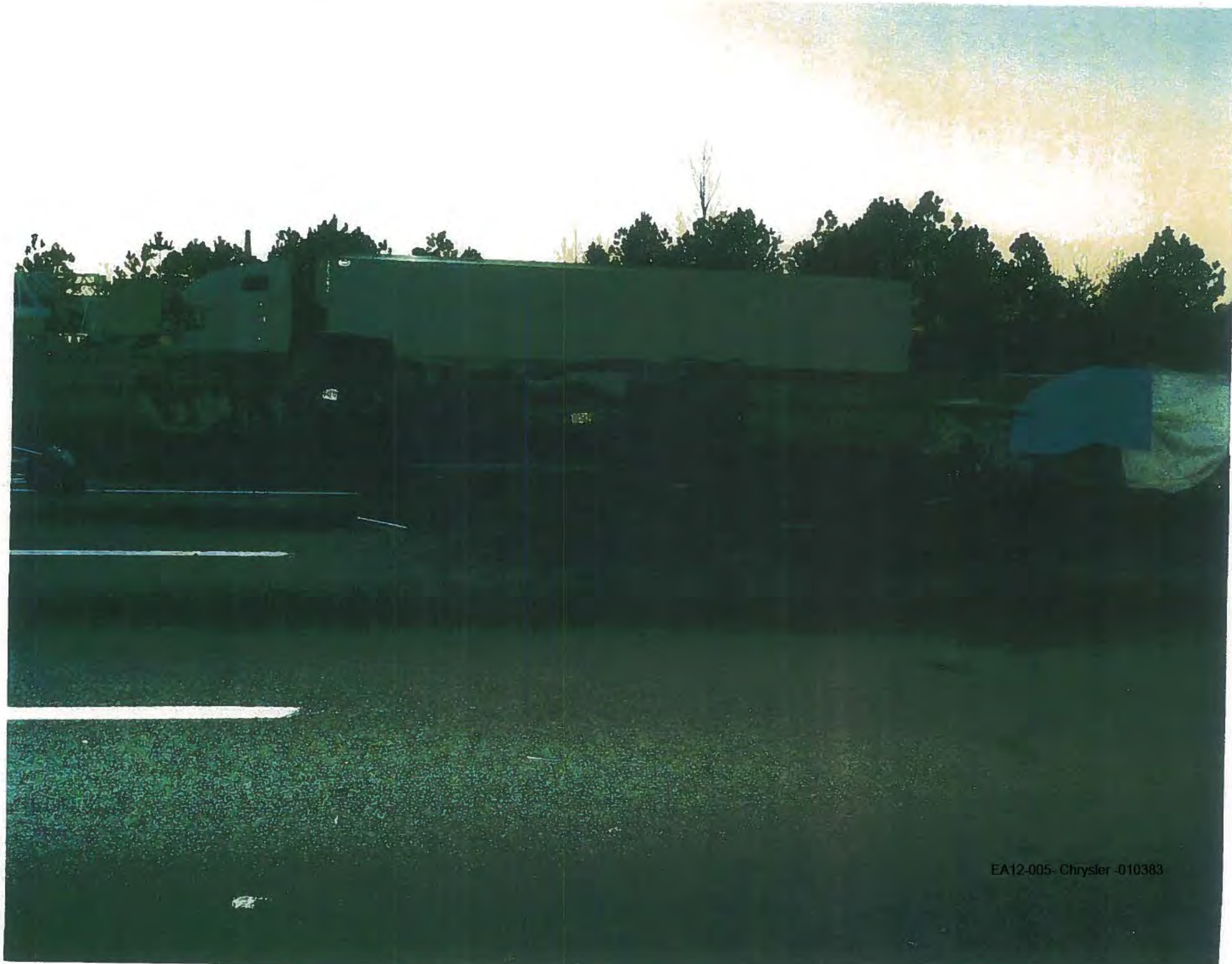
EA12-005-Chrysler\_010381





EA12-005- Chrysler -010382





EA12-005- Chrysler -010383





EA12-005 Chrysler 010384





0486

EA12-005-Chrysler-010385





EA12-005- Chrysler 010388





EA12-005- Chrysler -010387





EA12-005- Chrysler -010388





EA12-005 Chrysler -010389





EM12-005 Chrysler 010390





EA12-005- Chrysler -010391





EA12-005- Chrysler -010392





EA12-005- Chrysler -010393





EA12-005- Chrysler-010394





EA12-005- Chrysler -010395





EA12-005- Chrysler -010396



EA12-005



EA12-005- Chrysler -010397





EA12-005- Chrysler -010398





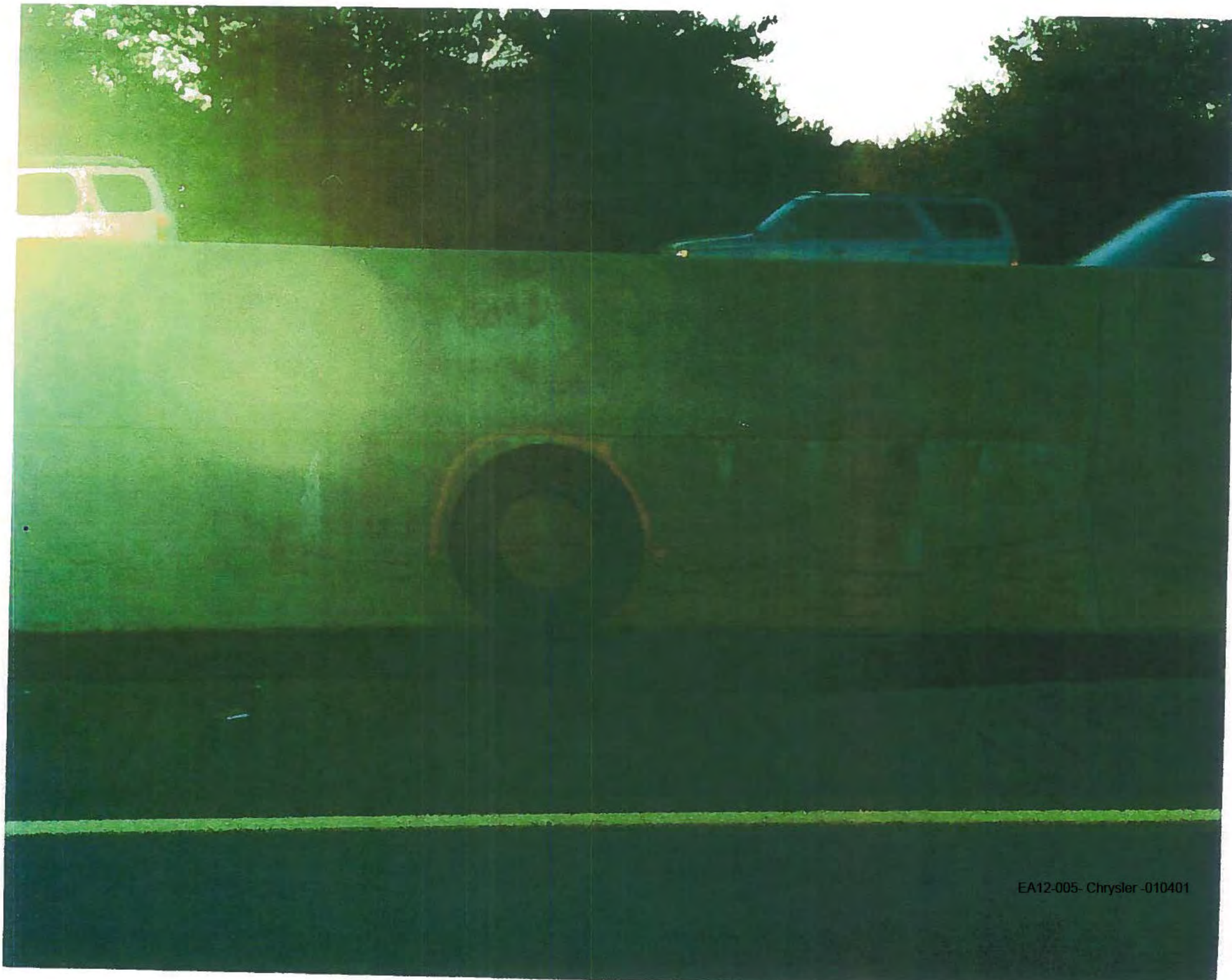
EA12-005- Chrysler -010399





EA12-005 Chrysler 010400





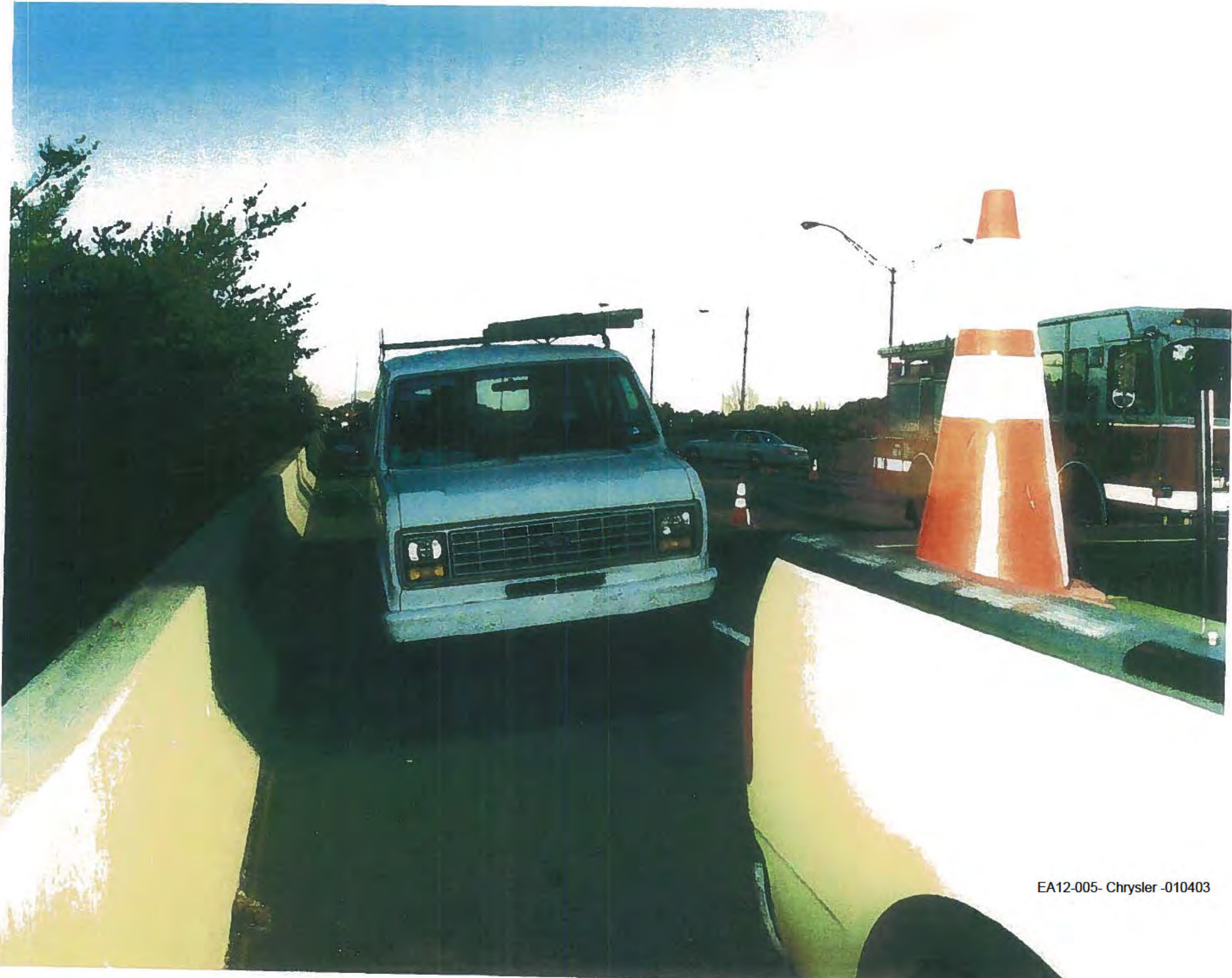
EA12-005- Chrysler -010401





EA12-005- Chrysler -010402





EA12-005- Chrysler -010403





EA12-005- Chrysler -010404