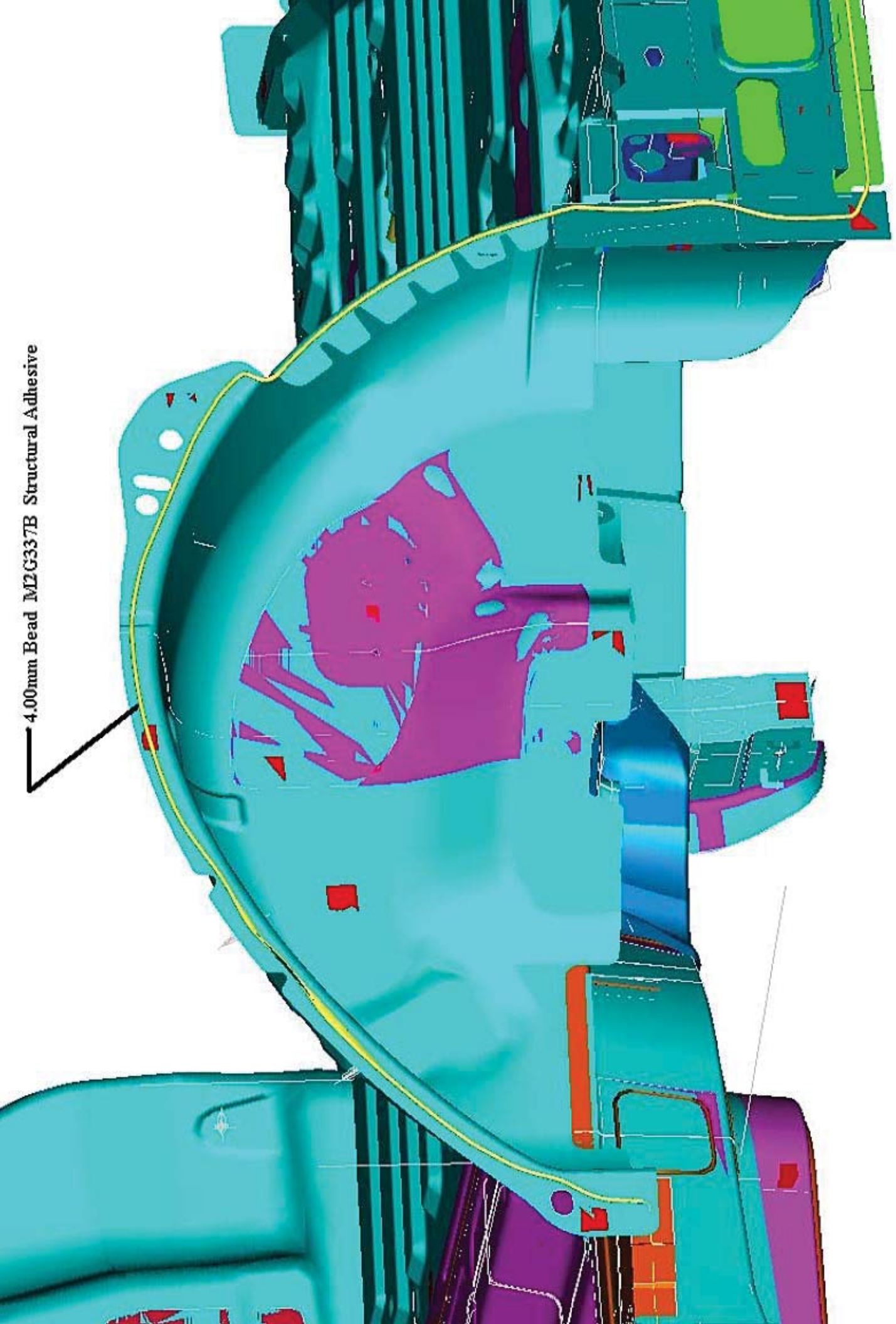


4.00mm Bead M2G337B Structural Adhesive



From: Shastry, Sushil (S.)
Sent: Wednesday, April 11, 2012 2:36 PM
To: Syed, Imran (I.F.)
Subject: RE: Sealing document - Urgent request

Follow Up Flag: Follow up
Flag Status: Flagged

No, I need front and rear structure/underbody/wheelhouse assembled together as one piece assembly.

Thanks

From: Syed, Imran (I.F.)
Sent: Wednesday, April 11, 2012 2:22 PM
To: Shastry, Sushil (S.)
Subject: RE: Sealing document - Urgent request

We have both. FRT Structure as well as underbody welded with FRT structure.

Do you want separate front structure?

Regards

Imran F. Syed

PVT Engineer - Sheet metal
Ford - Oakville Assembly Complex
Phone: 905 845 2511 ext 3718
isyed3@ford.com

From: Shastry, Sushil (S.)
Sent: Wednesday, April 11, 2012 11:51 AM
To: Syed, Imran (I.F.)
Subject: FW: Sealing document - Urgent request
Importance: High

Imran,

I am assuming the front structure and underbody is welded together as one piece assembly. Please confirm.
Thanks

From: Syed, Imran (I.F.)
Sent: Wednesday, April 11, 2012 11:36 AM
To: Shastry, Sushil (S.); Janic, Alex (A.); Allan, Don (D.W.)
Cc: Kolar, Ted (T.V.); Saylor, Richard (R.)
Subject: RE: Sealing document - Urgent request
Importance: High

Don,

As discussed this morning, can you please provide cost to bring down 2 underbodies and 2 front structure of V229 - Freestar and pack them to ship to Dearborn.

Location - Under body at Col location M27
Front Structure at Col Location Q26

Regards

Imran F. Syed

PVT Engineer - Sheet metal
Ford - Oakville Assembly Complex
Phone: 905 845 2511 ext 3718
isyed3@ford.com

From: Shastry, Sushil (S.)
Sent: Wednesday, April 11, 2012 10:37 AM
To: Janic, Alex (A.)
Cc: Syed, Imran (I.F.); Shastry, Sushil (S.); Kolar, Ted (T.V.)
Subject: FW: Sealing document - Urgent request

How much does it cost to ship these parts?

Thanks

From: Janic, Alex (A.)
Sent: Wednesday, April 11, 2012 9:38 AM
To: Syed, Imran (I.F.); Shastry, Sushil (S.); Sayler, Richard (R.)
Cc: Kolar, Ted (T.V.)
Subject: RE: Sealing document - Urgent request

Imran please get cost from Don Allen.

Sushil, who will pay for the whole project?

Area of the plant is not assessable for current production personnel and we need outside contractor with substantial constriction machinery to reach under body.

From: Syed, Imran (I.F.)
Sent: Wednesday, April 11, 2012 9:19 AM
To: Shastry, Sushil (S.); Sayler, Richard (R.); Janic, Alex (A.)
Subject: RE: Sealing document - Urgent request

Richard,

FYI,

I will work with Kyle & Don Allen to see how quickly we can do it.

Regards

Imran F. Syed

PVT Engineer - Sheet metal
Ford - Oakville Assembly Complex
Phone: 905 845 2511 ext 3718
isyed3@ford.com

From: Shastry, Sushil (S.)
Sent: Wednesday, April 11, 2012 8:55 AM
To: Syed, Imran (I.F.)
Subject: RE: Sealing document - Urgent request

Imran,

Thanks for sending the pictures.

Last 3 pictures shows frontend and undebody structure assembly.

I would like to get two (2) frontend and underbody structure assemblies. Please let me know the timing to ship these parts to Bldg 4. I will provide you complete shiiping adres in my next e-mail.

Thanks
Sushil

From: Kolar, Ted (T.V.)
Sent: Wednesday, March 07, 2012 4:27 PM
To: Shastry, Sushil (S.)
Subject: RE: Sealing document - Urgent request

Try some one in VO processing - maybe Linda Rose might have a lead.

Ted Kolar

PD - Body Structures Supervisor
313-805-5977

From: Shastry, Sushil (S.)
Sent: Wednesday, March 07, 2012 4:03 PM
To: Kolar, Ted (T.V.)
Subject: FW: Sealing document - Urgent request

FYI - Plant PVT does not have any documentation / sealer manual or illustration sheets.

Thanks
Sushil

Sorry Sushil I cannot find this documentation.

Sincerely

Alex Janic,
U38X / D47X PVT
FORD Oakville Assembly Plant
Phone: 905 845 2511, ext 3702

From: Janic, Alex (A.)
Sent: Wednesday, March 07, 2012 2:33 PM
To: Shastry, Sushil (S.); Wichlacz, Matthew (M.W.)
Subject: RE: Sealing document - Urgent request

Matt please help Sushil with VOBC contact for V229 documentation

Sincerely

Alex Janic,
U38X / D47X PVT
FORD Oakville Assembly Plant
Phone: 905 845 2511, ext 3702

From: Janic, Alex (A.)
Sent: Wednesday, March 07, 2012 2:25 PM
To: Shastry, Sushil (S.)
Subject: FW: Sealing document - Urgent request

<https://www.edms.ford.com/webtop/component/drl?objectId=0b00cad98036dbe7&Reload=1251996234871>

Sincerely

Alex Janic,
U38X / D47X PVT
FORD Oakville Assembly Plant
Phone: 905 845 2511, ext 3702

From: Janic, Alex (A.)
Sent: Wednesday, March 07, 2012 2:13 PM
To: Shastry, Sushil (S.)
Subject: RE: Sealing document - Urgent request

Sorry Sushil I cannot find this documentation.

Sincerely

Alex Janic,
U38X / D47X PVT
FORD Oakville Assembly Plant
Phone: 905 845 2511, ext 3702

From: Shastry, Sushil (S.)
Sent: Wednesday, March 07, 2012 1:57 PM
To: Janic, Alex (A.)
Subject: FW: Sealing document - Urgent request

Hi Janic,

Please send me sealer manual.

Also, please send the illustration sheet for wheel housing processing. We would like to know how the wheel housing is processed in body shop and in paint shop.

Thanks

Sushil

From: Shastry, Sushil (S.)
Sent: Monday, March 05, 2012 2:49 PM
To: Janic, Alex (A.)
Subject: FW: Sealing document

From: Shastry, Sushil (S.)
Sent: Monday, March 05, 2012 2:43 PM
To: Syed, Imran (I.F.)
Subject: Sealing document

Hi Imran,

I am looking for sealer manual / illustration sheet of wheel housing and floor sealing of MY2004 Freestar program. Could you please let me know how to find this process document?

Thanks

Sushil

From: Tannous, Dan (D.)
Sent: Tuesday, October 09, 2012 8:43 AM
To: Shastry, Sushil (S.)
Subject: RE: Tests

Sushil, see note below!

We need to cut out a section of LH and RH wheelhouse / floor asy where the brkt's are mounted. B#4 cannot handle the buck , so I would recommend we ship to Roush and have them cut-out the sections and scrap the remainder of the buck. I will discuss with you later today the details.

Best Regards,

Dan Tannous
D & R Engineer

CRFTVC
25111 Glendale
Redford, MI 48239
Phone:(313)-592-2149 Cell (313) - 790-4347
E-mail: dtannous@ford.com

From: Cockman, Adrian (A.P.)
Sent: Monday, October 08, 2012 3:05 PM
To: Tannous, Dan (D.)
Subject: Tests

For the Freestar fastener tests put them down as 'Potential Recall'

We like to run at least 10 tests to get statistical results.

Therefore 5 brackets, 5 top plates with bolts attached, 10 nuts, 5 bottom support plates.

Also 10 J Nuts, 10 bolts, 5 patch panels.

One buck section should be enough, if we run into issues we may be able to simulate the buck section to get an assembly torque recommendation.

ELMS request for BCTD Fasteners.

Adrian Cockman

From: Marciano, Victor (V.J.)
Sent: Thursday, June 21, 2012 10:25 AM
To: Strack, Fred (F.); Posh I, Reed (R.)
Subject: RE: Tools at MS01A

Fred/Reed,

The part numbers, 4F23-1727834/5, are sub-assembly part numbers made from the 3F23-1727886/7 KD stamped parts. I do not know what was done to the stamped parts to make them into sub-assemblies (i.e. welded on nuts, studs or reinforcements). You will have to review this with PD.

Victor Marciano

Buffalo Stamping Plant
Manufacturing Engineer
716-821-4134
716-821-4075 fax

From: Strack, Fred (F.)
Sent: Thursday, June 21, 2012 9:16 AM
To: Posh I, Reed (R.); Marciano, Victor (V.J.)
Subject: RE: Tools at MS01A

Reed

Victor recommended the note to you. See the attached email.

<< Message: RE: PE11-039 Freestar Corrosion >>

Regards,

Fred Strack
Buyer - Ford Global Purchasing - FCSD
313-390-1592
Fax 313-621-2940

From: Posh I, Reed (R.)
Sent: Thursday, June 21, 2012 8:14 AM
To: Marciano, Victor (V.J.); Strack, Fred (F.)
Subject: RE: Tools at MS01A

Good morning Fred and Victor,

Fred Please verify the part numbers you are looking for from Buffalo. The line items that Victor refers to is/are 3F23 1727886/7 for the engineering numbers. Not service numbers. The numbers that you are referencing in your note do not appear on the Master List.

Fred please verify the engineering part numbers for Victor and I. There are no 4F23-17278834/5 on the scrap list.

Reed Posh

Obsolete Tooling
Tooling Management System (TMS)
Global Asset Management (GAM)
rposh3@ford.com
(313) 323-6652

From: Posh I, Reed (R.)
Sent: Thursday, June 21, 2012 8:06 AM
To: Marciano, Victor (V.J.)
Subject: RE: Tools at MS01A

Great Victor.

I will note in the files that these tools were not scrapped.

Thanks
Reed

Reed Posh

Obsolete Tooling
Tooling Management System (TMS)
Global Asset Management (GAM)
rposh3@ford.com
(313) 323-6652

From: Marciano, Victor (V.J.)
Sent: Thursday, June 21, 2012 7:53 AM
To: Posh I, Reed (R.)
Subject: RE: Tools at MS01A

Reed,

Yes, we have these tools. Fred Stack has already been in contact with us about saving them. I instructed him to contact you and Chris about removing them from the Scrap list so they weren't assumed to be scrapped in the future.

On the BSP Master list, they are items #264, 273, 274, 275, 276, 147 & 159.

Victor Marciano

Buffalo Stamping Plant
Manufacturing Engineer

716-821-4134
716-821-4075 fax

From: Posh I, Reed (R.)
Sent: Thursday, June 21, 2012 7:34 AM
To: Marciano, Victor (V.J.)
Subject: FW: Tools at MS01A

Hi Victor,

Looks the buyers are looking to save these tools. I didn't see these parts on the two lists GAM prepared for Buffalo. Can you check to see if they are any of the lists (GAM or Deloitte) and let me know. Also, check to see if you still have the tools for these parts at the plant. Seems to be important.

Thanks
Reed

Reed Posh

Obsolete Tooling
Tooling Management System (TMS)
Global Asset Management (GAM)
rposh3@ford.com
(313) 323-6652

From: Strack, Fred (F.)
Sent: Wednesday, June 20, 2012 4:04 PM
To: Posh I, Reed (R.)
Cc: Call, Steve (S.S.)
Subject: Tools at MS01A

Reed

These tools are currently on the disposition list for Buffalo Stamping. We need these removed. Ford is going to modify these for use in a pending QSF program. Part numbers are below.

SERVICE PART: 3F2Z-1727886-AA_
ENGINEERING PART: 4F23 1727834 AA

SERVICE PART: 3F2Z-1727887-AA_
ENGINEERING PART: 4F23 1727835 AA

Regards,

Fred Strack
Buyer - Ford Global Purchasing - FCSD
313-390-1592
Fax 313-621-2940

From: Tuneff, Mark (M.S.)
Sent: Wednesday, March 07, 2012 11:20 AM
To: Pancioli, Tim (T.N.); Shastry, Sushil (S.)
Subject: RE: Vehicle for review

Absolutely.

From: Pancioli, Tim (T.N.)
Sent: Wednesday, March 07, 2012 10:50 AM
To: Shastry, Sushil (S.); Tuneff, Mark (M.S.)
Subject: RE: Vehicle for review

Sushil – I have Rob Fendt bringing his Freestar in tomorrow (Thursday). I will set it up so we can view it from 2:00-3:00, which is over the 2:30-3:00 time Mark has our Freestar telephone conference scheduled. Rob is the one planning on selling his vehicle. It is a 2005 and we have not looked at it yet.

Mark – I propose we just meet around this vehicle and discuss instead of a teleconference tomorrow. Are you ok with that?

I will send a meeting notice if this is ok.

Thanks,
Tim

From: Shastry, Sushil (S.)
Sent: Tuesday, March 06, 2012 9:04 AM
To: Pancioli, Tim (T.N.)
Subject: RE: Vehicle for review

Hi Tim,

I checked with Ted and he is available this week Wednesday/Thursday or Friday afternoon around 2 PM to review Freestar vehicle.

Thanks
Sushil

From: Pancioli, Tim (T.N.)
Sent: Monday, March 05, 2012 4:04 PM
To: Shastry, Sushil (S.)
Subject: Vehicle for review

Hi Sushil,

I sent a note and cc'd you regarding the vehicle that the transmission team is using right now. Not sure what they will respond with, but please tell me what day or days are good for you if you want me to see if I can have one of the FBP3 Employees bring in their vehicle to FBP3. They are all family members cars so have to arrange in advance and I don't want to set something up on a day that isn't good for you or someone you need to be present.

Thanks,
Tim

From: John Taylor <taylor.john@towerinternational.com>
Sent: Monday, July 23, 2012 7:57 AM
To: Shastry, Sushil (S.)
Subject: Re: Wheel Well CAD

Sushil,
Please advise what time and location to deliver one pair of panels. I will update you with the restrike tool costs later this morning.

Thanks,

John Taylor

Tower International
Manager: Product Design
Manager: Prototype Engineering
Desk: 248.675.6130
Cell: 248.444.0065
Fax: 248.675.6631

On Thu, Jul 19, 2012 at 9:11 AM, Shastry, Sushil (S.) <sshastry@ford.com> wrote:
John,

Please send me the quote details for patch panel re-strike tool so that I can submit the GPIRS. Also, could you provide 1 set LH/RH wheel house prototype part by Monday, 07/23/2012.

Thanks
Sushil

From: John Taylor [mailto:taylor.john@towerinternational.com]
Sent: Wednesday, July 18, 2012 4:22 PM
To: Shastry, Sushil (S.)
Cc: Otis Henderson; Mark Mariotti
Subject: Wheel Well CAD

Sushil,
Otis Henderson is the Tower design engineer who is working on the Freestar wheel well patch part. There has been some difficulty placing the updated CAD into Team Center but they have made some recent progress. Otis will advise you when both R/H & L/H parts are ready for Ford review. If you need to get a hold of Otis, he can be reached at 248.675.6131

I will be out of the office Thursday and Friday, between Mark Mariotti (program manager) and Otis Henderson you can have any questions answered in my absence.

Regards,

John Taylor

Tower International

Manager: Product Design

Manager: Prototype Engineering

Desk: 248.675.6130

Cell: 248.444.0065

Fax: 248.675.6631

From: Shastry, Sushil (S.)
Sent: Friday, August 10, 2012 1:52 PM
To: Hoover, Chad (C.)
Cc: Kolar, Ted (T.V.); Tannous, Dan (D.); Duncan, Jeffrey (J.)
Subject: RE: Wheel well hole varification (8-7-2012)

Hi Chad,

I really appreciate all the support we have been receiving from TDM team members to complete the CAD design/release tasks of this "Fast track" project.

I will use the attached request form for all future design change request.

Thanks in advance for your support!

Sushil

From: Hoover, Chad (C.)
Sent: Friday, August 10, 2012 11:34 AM
To: Shastry, Sushil (S.)
Cc: Kolar, Ted (T.V.); Tannous, Dan (D.); Duncan, Jeffrey (J.)
Subject: RE: Wheel well hole varification (8-7-2012)

Sushil,

I understand the urgency in your need to complete the design for the Freestar Bracket. However, I need to formally document all of the requested changes as we are tackling this outside of the official WERS process. Attached is our AVO (Avoid Verbal Orders) design change document. Please take a few moments to fill out the first line on Page 2 with the latest direction. Any future changes to this part should be briefly documented on Page 2, and submitted to Dan Tannous and me. This helps me track changes and balance workload demands. As I am sure you are aware, I have Jeff Duncan allocated to multiple projects each with their own demands and urgency. We are diligently working to address your request.

<< File: Freestar Bracket.xls >>

Thanks,

Chad Hoover

Supervisor: Product Design & Engineering

Troy Design & Manufacturing

Phone: (313) 790-4787

e-mail: <<mailto:choover7@troydm.com>>

From: Shastry, Sushil (S.)
Sent: Friday, August 10, 2012 8:35 AM
To: Tannous, Dan (D.); Duncan, Jeffrey (J.)
Cc: Kolar, Ted (T.V.); Hoover, Chad (C.)
Subject: RE: Wheel well hole varification (8-7-2012)

Per our discussion, please make necessary modifications to attachment hole location and send the patch panel files for my review. I would appreciate if you could send the file before lunch time today so that I can get SLA parts/template by Monday AM for vehicle builds.

Thanks
Sushil

From: Tannous, Dan (D.)
Sent: Thursday, August 09, 2012 3:02 PM
To: Shastry, Sushil (S.)
Cc: Kolar, Ted (T.V.); Hoover, Chad (C.)
Subject: RE: Wheel well hole varification (8-7-2012)

Sushil, see attached issues regarding the scanned files. I will call you shortly to discuss, also check your TCE asy files.

<< File: Freestar Scanned Issue 2.GIF >> << File: Freestar Scanned Issue 1.GIF >>

Best Regards,

Dan Tannous
D & R Engineer

CRFTVC
25111 Glendale
Redford, MI 48239
Phone:(313)-592-2149 Cell (313) - 790-4347
E-mail: dtannous@ford.com

<< File: Capture102.JPG >> << File: Capture103.JPG >> << File: Capture104.JPG >>

From: Shastry, Sushil (S.)
Sent: Thursday, August 09, 2012 1:50 PM
To: Tannous, Dan (D.)
Cc: Kolar, Ted (T.V.); Hoover, Chad (C.)
Subject: FW: Wheel well hole varification (8-7-2012)

Dan,

Please let me know the status of patch panel CAD files with attachment holes added to it. The supplier is waiting for CAD file.

Thanks
Sushil

From: Shastry, Sushil (S.)
Sent: Wednesday, August 08, 2012 9:49 AM
To: Tannous, Dan (D.)
Cc: Kolar, Ted (T.V.); Hoover, Chad (C.)
Subject: FW: Wheel well hole varification (8-7-2012)

Hi Dan,

Attached please find coordinate info for the patch panel holes.

I would appreciate if you could update the patch panel CAD files to reflect the attachment holes and send the updated file today as TOWER is awaiting for the updated CAD file to make prototype parts. We need prototype parts to build the buck and Freestar vehicles.

Thanks in advance for your help!

Sushil

From: Braden, Steve (S.)
Sent: Tuesday, August 07, 2012 1:07 PM
To: Shastry, Sushil (S.); Tannous, Dan (D.)
Cc: Braden, Steve (S.)
Subject: Wheel well hole varification (8-7-2012)

Dan and Sushil,

Here are the files for the Freestar wheel wells. I have the files broken up so pay attention to the name of the file. If you have any questions, let me know.

<< File: Freestar RH Wheelwell Holes Only (8-7-2012).igs >> << File: Freestar LH and RH Wheelwell Hole Verification(8-7-2012).igs >> << File: Freestar LH and RH Wheelwell Holes Only (8-7-12).mht >> << File: Freestar LH Wheelwell Hole Verification(8-7-2012).igs >> << File: Freestar LH Wheelwell Holes Only (8-7-2012).igs >> << File: Freestar RH Wheelwell Hole Verification(8-7-2012).igs >>

Thanks,

Steve Braden

Dimensional Analysis Tech

sbraden1@ford.com

Roush Industries

313-248-1971 / 313-248-1785 (Office)

313-248-5938 (OC'S Room)

313-322-2986 (Barrier)

From: Shastry, Sushil (S.)
Sent: Wednesday, May 23, 2012 2:45 PM
To: Birt, Lorie (L.A.)
Subject: RE: Wheelhouse Tooling - MY 2004 Freestar: Urgent

Thanks

From: Birt, Lorie (L.A.)
Sent: Wednesday, May 23, 2012 2:21 PM
To: Shastry, Sushil (S.)
Subject: RE: Wheelhouse Tooling - MY 2004 Freestar: Urgent

Sushil,

3F23-1727798 was not produced by BSP and does not appear in the sheet 3 database. I suspect the part must have been produced outside of Ford because only parts produced within the company appear in that database. Sorry I could not be of more assistance.

Regards,
Lorie Birt
MP&L
Ford Motor Co.
856-4279 (Ford Line)
716-821-4279 (Outside Line)
716-821-4069 (fax)

From: Shastry, Sushil (S.)
Sent: Wednesday, May 23, 2012 2:02 PM
To: Birt, Lorie (L.A.)
Subject: RE: Wheelhouse Tooling - MY 2004 Freestar: Urgent

Hi Lori,

Thanks for sending the material information.

Here is the wheel house assembly part numbers. Do you have material spec and thickness info for 3F23-1727798 ?

Thanks

<< OLE Object: Picture (Metafile) >>

From: Birt, Lorie (L.A.)
Sent: Wednesday, May 23, 2012 1:13 PM
To: Shastry, Sushil (S.)
Subject: RE: Wheelhouse Tooling - MY 2004 Freestar: Urgent

Sushil,

Attached is the sheet 3, please let me know if you require any further information.

<< File: 3F23-1727886-7.pdf >>

Regards,
Lorie Birt
MP&L
Ford Motor Co.
856-4279 (Ford Line)
716-821-4279 (Outside Line)
716-821-4069 (fax)

From: Shastry, Sushil (S.)
Sent: Wednesday, May 23, 2012 12:05 PM
To: Birt, Lorie (L.A.)
Subject: RE: Wheelhouse Tooling - MY 2004 Freestar: Urgent

Hi Lorie,

We are trying to find out material specification and thickness information for the inner and outer wheelhouse parts. I am not able to find this info on the CAD files of the wheel house parts.

Please let me know if you have the process sheets for wheel house parts.

Thanks
Sushil

From: Birt, Lorie (L.A.)
Sent: Friday, March 23, 2012 3:55 PM
To: Shastry, Sushil (S.)
Cc: Marciano, Victor (V.J.); McCulligan, Patrick (P.A.)
Subject: RE: Wheelhouse Tooling - MY 2004 Freestar

Sushil,

From what I have been able to determine, I believe when this part was still in production BSP stamped the parts and then shipped to a company named SKD where the parts were assembled and then shipped to Oakville. I believe FCSD used to procure the assemblies from SKD.

With that being said, BSP does have the dies stored on our hill. However because they have been stored outside since 2007 they are no longer in good condition. In addition, BSP had been given authorization by GAM to scrap the dies last October but had not done so yet. I am attaching further information to this for your reference. Please let me know how you would like to proceed.

The die asset disposition matrix that was finalized by Reed Posh can be found at W:\2003-MfgEngineering\MFE\ME&TD\Die-Asset Disposal.

Items 264, 273,274,275,276 are the dies for the F23-1727886/7. Under the "GAM Disposition" column (far right column), it listed dies to be Scrapped.

<< Message: FCSD V229 BALACE OUT WORK PLAN >>

Regards,
Lorie Birt
MP&L
Ford Motor Co.
856-4279 (Ford Line)
716-821-4279 (Outside Line)
716-821-4069 (fax)

From: Shastry, Sushil (S.)
Sent: Friday, March 23, 2012 2:55 PM
To: Birt, Lorie (L.A.)
Subject: RE: Wheelhouse Tooling - MY 2004 Freestar

Lorie,

I have the following part numbers for wheel house assembly.
4F23-1727834/35
Corresponding Service part# is 3F2Z-1727886/87 - AA.

I would like to know if SBU still has tooling available (in good condition) for wheel house assembly part# 4F23-1727834/35.

Just FYI- we are working on (OGC litigation issue - wheel house corrosion on 2004 Freestar). We may need to order wheel house assemblies /parts to support vehicle repairs.

Thanks
Sushil

From: Birt, Lorie (L.A.)
Sent: Wednesday, March 21, 2012 3:34 PM
To: Shastry, Sushil (S.)
Cc: Marciano, Victor (V.J.); Salna, Steve (S.T.)
Subject: FW: Wheelhouse Tooling - MY 2004 Freestar

Sushil,

First, I would like to start by verifying the information in your attached e-mail. 4F23-1727834/5 would be wheelhouse assemblies but 3F23-1727894/5 would not. I believe the service numbers you listed would correspond to the 834/5 but the service numbers are missing the suffixes. Would you have these by chance?

Next, are you asking if we have the tooling because there is demand for these parts or for some other reason?

I have checked the PTN website and it only goes back to 2009. I believe these parts may have had PTN's before that time but will need the full service numbers to investigate further.

Regards,
Lorie Birt
MP&L
Ford Motor Co.
856-4279 (Ford Line)
716-821-4279 (Outside Line)
716-821-4069 (fax)

From: Marciano, Victor (V.J.)
Sent: Wednesday, March 21, 2012 3:19 PM
To: Birt, Lorie (L.A.)
Subject: FW: Wheelhouse Tooling - MY 2004 Freestar

Lorie,

As the Parts Control Coordinator, I figure you would want to answer Sushil. As for the die tooling, it is on the hill. However, it is on the list to be Scraped as per the GAM Disposition. Therefore, are we still responsible for supplying service?

Victor Marciano

Buffalo Stamping Plant
Manufacturing Engineer
716-821-4134
716-821-4075 fax

From: Shastry, Sushil (S.)
Sent: Wednesday, March 21, 2012 12:59 PM
To: Marciano, Victor (V.J.)
Subject: Wheelhouse Tooling - MY 2004 Freestar

Hi Victor,

We are trying to find out tolling status of wheel housing parts/assembly of MY2004 Freestar (V229) program. Martinrea used to get stamping parts from SBU and assemble wheel house for this program. I am not sure if the tooling of these parts still exists at SBU plant.

Wheelhouse assembly part# are:

4F23-1727834/35

3F23-1727894/95

Corresponding Service part# is 3F2Z-1727886/87

I would appreciate if you could check into this and let me know your feedback ASAP.

Thanks

Sushil

From: Birt, Lorie (L.A.)
Sent: Friday, March 23, 2012 3:55 PM
To: Shastry, Sushil (S.)
Cc: Marciano, Victor (V.J.); McCulligan, Patrick (P.A.)
Subject: RE: Wheelhouse Tooling - MY 2004 Freestar

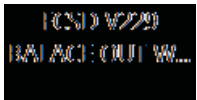
Sushil,

From what I have been able to determine, I believe when this part was still in production BSP stamped the parts and then shipped to a company named SKD where the parts were assembled and then shipped to Oakville. I believe FCSD used to procure the assemblies from SKD.

With that being said, BSP does have the dies stored on our hill. However because they have been stored outside since 2007 they are no longer in good condition. In addition, BSP had been given authorization by GAM to scrap the dies last October but had not done so yet. I am attaching further information to this for your reference. Please let me know how you would like to proceed.

The die asset disposition matrix that was finalized by Reed Posh can be found at W:\2003-MfgEngineering\MFE\ME&TD\Die-Asset Disposal.

Items 264, 273,274,275,276 are the dies for the F23-1727886/7. Under the "GAM Disposition" column (far right column), it listed dies to be Scrapped.



Regards,
Lorie Birt
MP&L
Ford Motor Co.
856-4279 (Ford Line)
716-821-4279 (Outside Line)
716-821-4069 (fax)

From: Shastry, Sushil (S.)
Sent: Friday, March 23, 2012 2:55 PM
To: Birt, Lorie (L.A.)
Subject: RE: Wheelhouse Tooling - MY 2004 Freestar

Lorie,

I have the following part numbers for wheel house assembly.
4F23-1727834/35

Corresponding Service part# is 3F2Z-1727886/87 - AA.

I would like to know if SBU still has tooling available (in good condition) for wheel house assembly part# 4F23-1727834/35.

Just FYI- we are working on (OGC litigation issue - wheel house corrosion on 2004 Freestar). We may need to order wheel house assemblies /parts to support vehicle repairs.

Thanks
Sushil

From: Birt, Lorie (L.A.)
Sent: Wednesday, March 21, 2012 3:34 PM
To: Shastry, Sushil (S.)
Cc: Marciano, Victor (V.J.); Salna, Steve (S.T.)
Subject: FW: Wheelhouse Tooling - MY 2004 Freestar

Sushil,

First, I would like to start by verifying the information in your attached e-mail. 4F23-1727834/5 would be wheelhouse assemblies but 3F23-1727894/5 would not. I believe the service numbers you listed would correspond to the 834/5 but the service numbers are missing the suffixes. Would you have these by chance?

Next, are you asking if we have the tooling because there is demand for these parts or for some other reason?

I have checked the PTN website and it only goes back to 2009. I believe these parts may have had PTN's before that time but will need the full service numbers to investigate further.

Regards,
Lorie Birt
MP&L
Ford Motor Co.
856-4279 (Ford Line)
716-821-4279 (Outside Line)
716-821-4069 (fax)

From: Marciano, Victor (V.J.)
Sent: Wednesday, March 21, 2012 3:19 PM
To: Birt, Lorie (L.A.)
Subject: FW: Wheelhouse Tooling - MY 2004 Freestar

Lorie,

As the Parts Control Coordinator, I figure you would want to answer Sushil. As for the die tooling, it is on the hill. However, it is on the list to be Scraped as per the GAM Disposition. Therefore, are we still responsible for supplying service?

Victor Marciano

Buffalo Stamping Plant
Manufacturing Engineer
716-821-4134
716-821-4075 fax

From: Shastry, Sushil (S.)
Sent: Wednesday, March 21, 2012 12:59 PM
To: Marciano, Victor (V.J.)
Subject: Wheelhouse Tooling - MY 2004 Freestar

Hi Victor,

We are trying to find out tolling status of wheel housing parts/assembly of MY2004 Freestar (V229) program. Martinrea used to get stamping parts from SBU and assemble wheel house for this program. I am not sure if the tooling of these parts still exists at SBU plant.

Wheelhouse assembly part# are:
4F23-1727834/35

3F23-1727894/95

Corresponding Service part# is 3F2Z-1727886/87

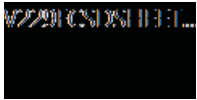
I would appreciate if you could check into this and let me know your feedback ASAP.

Thanks

Sushil

From: Mckeown, Michael (P.)
Sent: Wednesday, January 10, 2007 10:37 AM
To: Zelic, Scott (S.E.); Collins, Timothy (T.J.); Birt, Lorie (L.A.)
Cc: Kazmierski, Frank (F.J.); Lussier, Phil (P.)
Subject: FCSD V229 BALACE OUT WORK PLAN

Attached is FCSD'S balance out numbers for V229. I will be establishing release for these parts to feed into CMMS. FCSD will work with the Buffalo on developing the shipping schedule.



Below are parts that Buffalo produces but FCSD does not get directly form your location.

3F23	17	27886 AJ	PNL W/HSE INR
3F23	17	27887 AL	PNL W/HSE INR

Please hold 300 pcs on each side. FCSD will issue releases to SKD to supply us our end item.

5F23	17	24704 AA	Pnl Rr Dr O S
5F23	17	24705 AA	Pnl Rr Dr O S Lh

FCSD is working with Oakville on getting door assembly's run. Please hold outer inventory as this plan has not been finalized. Will advise.

6F23	17	278A98 AB	Pnl Bdy Sd Otr (BODY
6F23	17	278A99 AC	Pnl Bdy Sd Otr Lh

Reviewing cut and paste program with Gerstenslager. Will advise this week on the number of body sides FCSD will take to support OBS clam.

3F23	17	41304 AJ	RL-LFT/GT HDR OTR	BSP	PR1	3F23 1741302 AV
3F23	17	41306 AP	RL ASY-LFT/GT HDR	BSP	PR1	3F23 1741302 AV

FCSD will need 50 additional pcs on the above assembly. I will advise Gerstenslager to get the ordered placed.

Michael P. McKeown
Balance Out Coordinator
North American Supply Chain
Ford Customer Service Division
734-266-9845
mmckeow4@Ford.com

SUPPLIER	SERVICE	ENGINEERING	PART	PACKAGER	BRIDGE	BRIDGE	PRC RACK	PALLET	PRC RACKS
LOCATION	NUMBER	NUMBER	DESCRIPTION	LOCATION	RUN	ATB	TYPE	QTY	REQUIRED
MS01A	3F2Z1702012AA	3F231702015AF	PANEL ASY COWL TOP OUTER			800			
MS01A	3F2Z1702030CA	3F231702030AC	PANEL ASY COWL TOP			432			
MS01A	4F2Z1702508AA	5F231702508AA	A PILLAR ASY			520			
MS01A	4F2Z1702509AA	5F231702509AA	A PILLAR ASY			520			
MS01A	3F2Z1702524AA	3F231702524AH	REINFORCEMENT			400			
MS01A	3F2Z1702525AA	3F231702525AJ	REINFORCEMENT			400			
MS01A	3F2Z1703418AA	3F231703408AD	HEADER ASY WINDSCREEN			238			
MS01A	XF2Z1620402AA	3F231620402AA	REINFORCEMENT			800			
MS01A	3F2Z1720403AA	3F231720403AC	REINFORCEMENT			800			
MS01A	XF2Z1622842AA	XF221622842AB	REINFORCEMENT ASY DOOR HINGE			464			
MS01A	XF2Z1622843AA	XF221622843AC	REINFORCEMENT ASY DOOR HINGE			464			
MS01A	3F2Z1724320AA	3F231724320AG	PANEL ASY B PILLAR INNER			512			
MS01A	3F2Z1724321AA	3F231724321AG	PANEL ASY B PILLAR INNER			512			
AP20A	5F2Z1724622AA		DOOR ASY SLIDING			6144			
AP20A	5F2Z1724623AA		DOOR ASY SLIDING			5373			
MS05A	5F2Z1727864AA	5F231727864AB	PANEL ASY BODY SIDE INNER			420			
MS05A	5F2Z1727865AA	5F231730591AF	PANEL ASY BODY SIDE INNER			420			
Q29AA	3F2Z1727886AA		SET/NOT BYFFALO			300			
Q29AA	3F2Z1727887AA		SET/NOT BYFFALO			300			
MS01A	XF2Z1627886AB	3F231727894AA	PANEL WHEELHOUSE OUTER			798			
MS01A	XF2Z1627887AB	3F231727895AB	PANEL WHEELHOUSE OUTER			798			
MS01A	XF2Z1628028AA	4F231728028AB	EXTENSION			350			
MS01A	XF2Z1628029AA	4F231728029AB	EXTENSION			350			
MS01A	3F2Z1741038BA	3F231741038AD	PILLAR REAR			600			
MS01A	3F2Z1741039BA	3F231741039AD	PILLAR REAR			600			
AE2DA	3F2Z1741302BA	3F231741302BE	RAIL ASY ROOF SIDE			100			
MS01A	3F2Z1745114AA	3F231745114AD	TROUGH LUGGAGE COMPARTMENT DRAIN			580			
MS01A	3F2Z1745115AA	3F231745115AC	TROUGH LUGGAGE COMPARTMENT DRAIN			580			
MS01A	6F2Z1750202BA	6F231750202BD	ROOF			700			
MS01A	3F2Z1750202DA	5F231750202CA	ROOF			490			
MS01A	5F2Z1650222A	5F231750291AA	REINFORCEMENT			2000			
MS01A	3F2Z17278B10AA	3F2317278B10AJ	EXTENSION QUARTER PANEL REAR			720			
MS01A	3F2Z17278B11AA	3F2317278B11AH	EXTENSION QUARTER PANEL REAR			720			
MS01A	5F2Z17280C06AA	5F2317279D17AA	SUPPORT			700			
MS01A	6F2Z17281A35AA	6F2317281A07AE	PANEL ASY B PILLAR INNER			781			
MS01A	6F2Z17281A34AA	6F2317281A06AD	PANEL ASY B PILLAR INNER			781			
MS01A	XF2Z16410A60AA	4F2317410A60AA	EXTENSION			500			
MS01A	XF2Z16410A61AA	4F2317410A61AA	EXTENSION			500			
MS01A	3F2Z17513A30AA	5F2317513A30AA	RAIL ASY ROOF SIDE			400			
MS01A	5F2Z17513A31AA	5F2317513A31AC	RAIL ASY ROOF SIDE			400			
MS08A	4F2Z1702038AA	5F231702038AA	PANEL ASY COWL SIDE			400			
MS08A	4F2Z1702039AA	5F231702039AA	PANEL ASY COWL SIDE			400			
MS08A	3F2Z1710776AA	4F231710776AA	MEMBER ASY FLOOR CROSS			216			
MS08A	3F2Z16102BA	6F2316034AA	SHIELD			10000			
MS08A	3F2Z16103BA	6F2316035AA	SHIELD			11000			
MS01A	XF2Z1650202AA	1F221650202AA	ROOF (PAST MODEL)			105			
MS01A	XF2Z1650202BA	1F221650202BA	ROOF (PAST MODEL)			665			
MS01A	3F2Z1750202BA	3F231750202BD	ROOF (PAST MODEL)			175			
MS01A	3F2Z1750202CA	5F231750202BA	ROOF (PAST MODEL)			280			

From: Tannous, Dan (D.)
Sent: Friday, March 16, 2012 6:06 PM
To: Shastry, Sushil (S.)
Subject: RE: V229 Digital Buck files

Sushil, this is confirmation that the freestar shell did arrive at TDM this afternoon as scheduled!

Best Regards,

Dan Tannous
D & R Engineer

CRFTVC
25111 Glendale
Redford, MI 48239
Phone:(313)-592-2149 Cell (313) - 790-4347
E-mail: dtannous@ford.com

From: Shastry, Sushil (S.)
Sent: Friday, March 16, 2012 11:02 AM
To: Tannous, Dan (D.)
Subject: V229 Digital Buck files

Dan,

I am able to pull up floor pan, underbody structure and wheel house in digital buck. You need access to V229, V229-2006 digital buck files.

Also, for the buck/vehicle, it would be helpful if you can find an area w/hoist station so that it will be easy to review underbody structure of vehicle.

Thanks
Sushil

From: Shastry, Sushil (S.)
Sent: Wednesday, July 25, 2012 1:20 PM
To: Pancioli, Tim (T.N.)
Cc: Rivera, Santos (S.)
Subject: Revised bracket / hardware

Hi Tim,

I have left one set of bracket hardware with Bob in garage for second vehicle build. I spoke with Santos yesterday at garage and he told me that we can use his vehicle for hardware installation/confirmation build. Please let me know if we can use Bob to complete this second confirmation build.

Santos, please let us know if we can use your vehicle this week to complete the build.

Thanks
Sushil

Section View

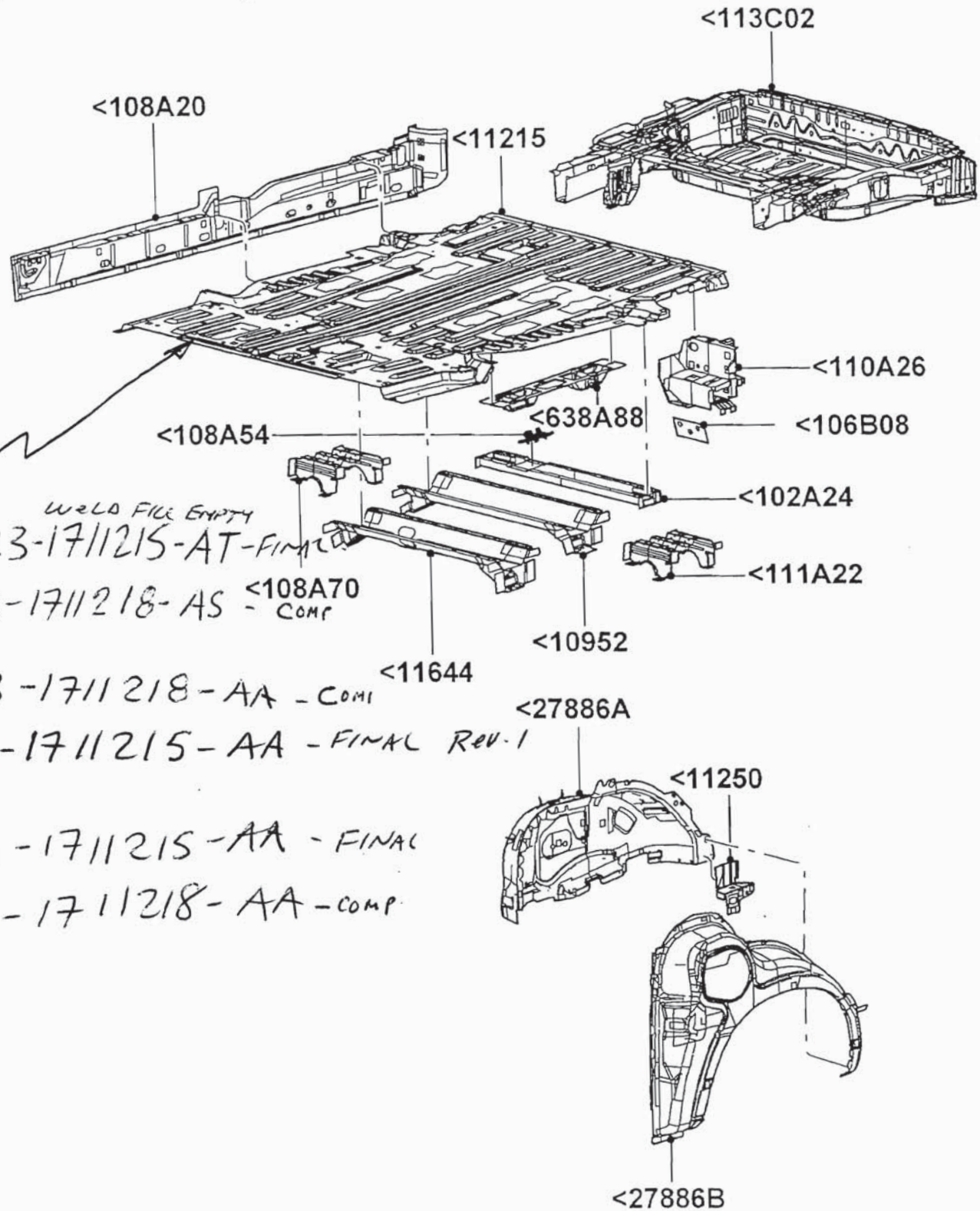
Vehicle Line: A4 - FREESTAR/MONTEREY (2004/)
 Template ID: 5010115
 Prefix Code:
 Suffix:
 Type: T
 Lexicon: 80167T - Floor Pan - Center and Rear
 Eff. In Date: 25-AUG-2003
 Eff. Out Date: 02-JAN-2007
 Illustration ID: [A0114651](#) <<<<< Click here to view Illustration

Section Properties

Catalog Parts Records

CMDTY	S F X	NAME	MY	EFF IN OUT	SERVICE PART PARTNER PART	PFC & MFC	SPEC & APP	Q T Y	O S I
<102A24 Member Assy - Floor Cross - Rear									
		4F2317102A24AA	04/07	N>25-Aug-2003/ 02-Jan-2007;	XF2Z-16102A24-AA FINIS-4515259			1	
<106B08 Shield Assy									
		5F2316106B08AA	04/07	N>25-Aug-2003/ 02-Jan-2007;	5F2Z-16106B08-AA			2	
<108A20 Member Assy - Floor Side - Rear									
		5F2317108A40AA	04/07	N>25-Aug-2003/ 02-Jan-2007;	XF2Z-16108A20-AA FINIS-4644121		RH (09515S)	1	
		5F2317108A41AA	04/07	N>25-Aug-2003/ 02-Jan-2007;	1F2Z-16108A21-AA FINIS-4644122		LH (72781S)	1	
<108A54 Plate									
		3F2317108A54AB	04/07	N>25-Aug-2003/ 02-Jan-2007;	3F2Z-17108A54-AA			2	
<108A70 Extension - Side Member									
		3F2317108A70AC	04/07	N>25-Aug-2003/ 02-Jan-2007;	3F2Z-17108A70-AA			1	5
<10952 Member Assy - Floor Cross									
		3F231710926AA	04/07	N>25-Aug-2003/ 02-Jan-2007;	3F2Z-1710952-AA			1	5
<110A26 Extension									
		5F2317110A26BA	04/07	N>25-Aug-2003/ 02-Jan-2007;	3F2Z-17110A26-BA		RH (09515S)	1	
		5F2317110A27BB	04/07	N>25-Aug-2003/ 02-Jan-2007;	3F2Z-17110A27-BA		LH (72781S)	1	
<111A22 Extension - Side Member									
		3F2317111A23AF	04/07	N>25-Aug-2003/ 02-Jan-2007;	3F2Z-17111A23-AA			1	5

2004 - 2007



WELD FILE EMPTY
 3F23-1711215-AT-FINAL
 3F23-1711218-AS
 5F23-1711218-AA - COM1
 5F23-1711215-AA - FINAL REV-1
 6F23-1711215-AA - FINAL
 5F23-1711218-AA - COMP

5010115
 08-2003
 A4
 A0114651-03

Sectioned Samples from Recyclers

2004 Wheelhouse 198897 R. H. (159K)



2004 Wheelhouse 19897 R.H. (159K)



2004 Wheelhouse 19897 R.H. (159K)



2004 Wheelhouse 19897 R. H. (159K)



2004 Wheelhouse 19897 R. H. (159K)



2004 Wheelhouse 19897 R. H. (159K)



2004 Wheelhouse 19897 R. H. (159K)



2004 Wheelhouse 19897 R. H. (159K)



2004 Wheelhouse 19897 R. H. (159K)



2004 Wheelhouse 19476 L.H. (109K)



2004 Wheelhouse 19476 L.H. (109K)



2004 Wheelhouse 19476 L.H. (109K)



2004 Wheelhouse 19476 L.H. (109K)



2004 Wheelhouse 19476 L.H. (109K)

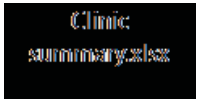


2004 Wheelhouse 19476 L.H. (109K)



From: Tuneff, Mark (M.S.)
Sent: Tuesday, April 10, 2012 8:45 AM
To: Pancioli, Tim (T.N.)
Subject: summary

Sorry, meant to send this sooner. Please let me know if you have questions. FYI, the MIS calculation is from the warranty start date to the clinic date, and the selling state I got from the ordering dealer information. The rating scale was 1- no perforation; 2- perf with areas no larger than a \$.25; 3- per with areas larger than \$.25; 4- larger area affected and the "DS" and "PS" are driver side/passenger side. And by the way, since a couple folks have asked, we weren't expecting any correlation to color, the color was recorded to help sort photos if necessary... Haven't figured out a way to share photos yet other than burning a CD, if you desire one let me know.



Mark Tuneff
Ford Motor Company
Automotive Safety Office
Phone: 313-323-0394
Fax: 313-594-2268

Seq	MY	VIN	Color	Miles	Build	WSD	Sell St	End	MIS	DS	PS	Occupant Pos	Switch	Occupied	Notes
14	2004	2FMFDA5821	Lite green	183000	14-Jun-04	25-Oct-04	MI	3/22/2012	90	3	3	Always	1-2 per year	3 per week	
28	2004	2FMFDA5829	Red	101000	9-Mar-04	30-Mar-04	MI	3/22/2012	97	4	3	Infrequently	1 per month	Rarely	Only going to own for another month.
20	2004	2FMZA50674	Silver	56000	12-Mar-04	27-Jul-04	MA	3/22/2012	93	1	1	Mostly	Frequently	Rarely	
7	2004	2FMZA52284		105412	20-Oct-03	15-Sep-04	MI	3/22/2012	92	4	4	Rarely	Rarely	Rarely	
11	2004	2FMZA52294		62000	6-Feb-04	7-Jul-04	MI	3/22/2012	94	1	3	Rarely	Infrequently	Infrequently	Original owner
30	2004	2FMZA57684	Silver	141000	21-Jun-04	22-Jul-04	MI	3/22/2012	93	2	4	Infrequently	1 per week	Rarely	
24	2004	2FMZA58204	Blue gray	77000	16-Apr-04	27-Sep-04	IL	3/22/2012	91	4	3	Mostly	1 per month	Frequently	Original owner.
3	2004	2MRDA2020	Red	19028	5-Sep-03	28-May-04	MI	3/22/2012	95	4	4	50% Rarely	Never	Always	Original owner.
27	2004	2MRDA2024	Red	78000	9-Jan-04	10-Nov-04	PA	3/22/2012	90	3	3	Always	Never	Always	60% Original owner
29	2004	2MRDA2025	Green beige	116000	12-Jan-04	12-Feb-04	MI	3/22/2012	99	4	3	Mostly	60% 1 per week	2-3 times per week	Car pool.
5	2004	2MRDA2027	Beige	69760	14-Apr-04	23-Jul-04	MI	3/22/2012	93	2	3	Mostly	Infrequently	Always	3rd row seat resistant to movement by hand.
12	2004	2MRDA2027	Beige	130000	15-Apr-04	24-Aug-04	MI	3/22/2012	92	4	3	Always	Rarely	Infrequently	Original owner
23	2004	2MRDA202X	Black	72000	15-Jan-04	26-Oct-04	MI	3/22/2012	90	4	4	Always	Weekly	Infrequently	Original owner
2	2005	2FMDA5223	Beige	116865	13-Dec-04	13-Dec-04	MI	3/22/2012	89	4	4	95% Rarely	Weekly	Infrequently	30% Kept inside. Original Owner. B-Lot
9	2005	2FMDA5821	Red	85680	14-Sep-04	11-Oct-05	MI	3/22/2012	78	3	3	Mostly	Infrequently	3 per month	Kept inside. Original Owner. "Tub gets filled with water" - possibly windows not fully closed.
1	2005	2FMDA5822	Red	91086	14-Sep-04	14-Sep-04	MI	3/22/2012	92	3	4	Mostly	Several per month	2-4 times per month	Original owner
19	2005	2FMDA5827	Dark gray	95000	30-Jun-04	28-Sep-05	MI	3/22/2012	79	2	1	Always	4-5 per year	Often	Original owner
21	2005	2FMDA5827	Blue gray	70000	13-Aug-04	27-May-05	MI	3/22/2012	83	2	3	Mostly	1 per week	Seldom	Original owner
18	2005	2FMDA5828	Sea green	82000	30-Jun-04	29-Dec-05	MI	3/22/2012	76	1	3	Mostly	monthly	Infrequently	5%
4	2005	2FMZA52245	Silver	77752	3-Aug-04	13-Jul-05	MI	3/22/2012	81	1	1	Mostly	Frequently	Infrequently	Original owner. Immaculate
22	2005	2FMZA57655	Silver	67000	12-Jan-05	24-Feb-05	OH	3/22/2012	86	2	4	Mostly	2 per month	Infrequently	Original owner
25	2005	2MRDA2321	Silver	33000	8-Sep-04	27-May-05	MI	3/22/2012	83	1	1	Always	Never	Daily	Estate purchase, 5 kids. NO COATING DS.
16	2005	2MRDA2323	Black	71500	23-Sep-04	14-Oct-04	MI	3/22/2012	91	1	2	Mostly	Infrequently	Daily	
10	2005	2MRDA2120	Blue	222000	26-Oct-04	24-Sep-05	OH	3/22/2012	79	4	2	Rarely	Rarely	Never	Tub very wet, stowed seat wet, carpet wet - possibly window leak or roof seam.
17	2006	2FMZA51646	Blue	140000	27-Sep-05	8-Nov-05	PA	3/22/2012	78	4	1	1 per week	1 per week	1 per week	More "gear hauler" than people hauler. Rear carpet wet, headliner shows signs of leak.
8	2006	2FMZA52226	Burgundy	150579	7-Dec-05	6-Apr-06	MI	3/22/2012	73	1	1	Mostly	2-3 per month	Frequently	
6	2006	2FMZA52256		135000	9-Jan-06	25-Jan-06	NJ	3/22/2012	75	1	2	Mostly	1-2 per week	2-3 times per week	50% DS Slider inoperative; Pass side appears to have body repair mid to aft (new parts, orange peel, alignment)
6	2006	2FMZA522X6		150278	3-Jan-06	4-Mar-06	MI	3/22/2012	74	1	2	Mostly	Monthly	1 per week	
13	2006	2MRDA2224		165000	4-Aug-05	27-Dec-05	MI	3/22/2012	76	4	1	60% 1 per week	Monthly	1 per week	
15	2006	2MRDA2225		61639	10-Apr-06	26-Apr-06	MI	3/22/2012	72	1	1	Mostly	Infrequently	1 per week	50%

From: Shastry, Sushil (S.)
Sent: Wednesday, July 18, 2012 10:26 AM
To: Williams, Robert (R.)
Subject: Testing on Hold

Hi Bob,

I had talked to Alex around June 15th and informed him that all testing on this program is on hold. I am not sure if Alex relayed that message to you.

Per management direction, we are not planning to run any tests on these bucks. Please ask ROUSH to keep these floor pans in the storage area for some weeks.

Thanks
Sushil

From: Williams, Robert (R.)
Sent: Wednesday, June 27, 2012 2:41 PM
To: Jacobs, Eric (E.J.); Shastry, Sushil (S.)
Cc: Livshiz, Alexander (A.G.); Cooley, Robert (R.L.); Kolar, Ted (T.V.)
Subject: RE:

We received 2 floor pans today at Roush.

What fabrication work needs to be done?

Bob Williams

DV Buck/Seat Coordinator
M1 Build site
rwill403@ford.com
Desk (313) 845-1716
Cell (734) 679-4075

From: Jacobs, Eric (E.J.)
Sent: Wednesday, May 30, 2012 1:46 PM
To: Shastry, Sushil (S.); Williams, Robert (R.)
Cc: Livshiz, Alexander (A.G.); Cooley, Robert (R.L.); Kolar, Ted (T.V.)
Subject: RE:

Sushil,

Please ship them to Roush attention Bob Williams.

Eric Jacobs

Safety Innovation Laboratory
Phone (313) 805-4685
Text Page: <mailto:3138054685@vtext.com>

From: Shastry, Sushil (S.)
Sent: Wednesday, May 30, 2012 1:44 PM
To: Jacobs, Eric (E.J.)
Cc: Livshiz, Alexander (A.G.); Cooley, Robert (R.L.); Kolar, Ted (T.V.)
Subject: FW:

Hi Eric,

I had some discussions with Joe Gatt regarding Freestar A vs B testing. Joe indicated that most probably you will be running this test.

Okaville is planning to ship floor pan assemblies this week. These assemblies require fabrication work to get proper fixture / structure around the wheel housing area.

Who is your contact at ROUSH to complete the fabrication work?

If the floor assemblies are not shipped to Bldg. 4, I can ask Okaville to ship these assemblies directly to ROUSH.

Thanks
Sushil

<< File: IMG_0141.JPG >>

From: Shastry, Sushil (S.)
Sent: Wednesday, May 30, 2012 10:49 AM
To: Livshiz, Alexander (A.G.); Gatt, Joseph (J.G.)
Subject: FW:

Alex and Joe,

I have submitted work order # AC5620 for the A vs B strength test.

I will have to revise the work task number on this work order, waiting for task number info from coordinator.

Floor pan assemblies will be delivered to Bldg 4 (attn: Alex) this week and support bracket will be available for testing on Monday.

Thanks
Sushil

From: Shastry, Sushil (S.)
Sent: Wednesday, May 16, 2012 11:25 AM
To: Livshiz, Alexander (A.G.)
Cc: Gatt, Joseph (J.G.)
Subject: RE:

Alex,

Yes, I am planning to submit a work order. I am working on getting parts and floor pan assemblies for testing.
Thanks

From: Livshiz, Alexander (A.G.)
Sent: Wednesday, May 16, 2012 7:43 AM
To: Shastry, Sushil (S.)
Subject: RE:

You have to contact my supervisor Cooley, Robert (R.L.) and submit a request. I might not be the test engineer on this job.

Regards,
Alex Livshiz
Cell 313-805-4691

From: Shastry, Sushil (S.)
Sent: Monday, May 14, 2012 3:16 PM
To: Livshiz, Alexander (A.G.); Gatt, Joseph (J.G.)
Subject:

Hi Alex and Joe,

Oakville plant is planning to ship Freestar floor pan assemblies to Bldg# 4 (Attn: Alex Livshiz) by end of this week.

I am in process of ordering prototype parts for testing. I will stop by at your desk Wednesday AM to continue our discussion from last week so that we can finalize a test plan.

Thanks
Sushil

From: John Taylor <taylor.john@towerinternational.com>
Sent: Wednesday, August 08, 2012 2:03 PM
To: Shastry, Sushil (S.)
Subject: Third Picture
Attachments: 2012-08-08_11-43-16_661.JPG

Sushil,
This is the third picture.

John Taylor

Tower International
Manager: Product Design
Manager: Prototype Engineering
Desk: 248.675.6130
Cell: 248.444.0065
Fax: 248.675.6631



EA12-003 001262

TITLE BLOCK INFORMATION – Wheel house Asy From IDEAS for Ref

THIS FILE IS THE PROPERTY OF _ Ford Motor Company
PART MUST COMPLY WITH SPECIFICATION WSS-M99P9999-A1
TO HELP SAFEGUARD HEALTH, SAFETY AND THE ENVIRONMENT.
DRAFTED IN ACCORDANCE WITH FORD ENGINEERING CAD &
DRAFTING STANDARDS CURRENT AT INITIAL RELEASE.
CONTROL ITEM (INVERTED DELTA) Y
TITLE 3F23-1767472-A
CAD TYPE 3-IDEAS (CctM/CtM)
CaD LOC METAPH
DESIGN MALTHERR
REFERENCE MP-3F23-010101-B6
MFG DATA NO. N/A
DIVISION N/A
PLANT N/A
OPER NO. N/A
SAFETY N/A
UNIT N/A

=====

BG01 GENERAL NOTES:

BG18 PRODUCER TO ESTABLISH PRODUCT ENGINEERING/SQA
APPROVED CONTROL PLAN.

BG28 MUST BE DATE CODE STAMPED IN ACCORDANCE WITH ES-D1AB-11011-A.

BG29 FOR ADDITIONAL GENERAL NOTES SEE ES-YF12-1294-AA.

BG32 FUSION FILLET WELDS APPROXIMATELY ___ LONG,
CLASS __3 __, SEE ES-C8AB-11006-A.

BG33 PROJECTION WELDS SHOWN ARE CLASS ____, SEE ES-C8AB-11009-A.

BG34 PROJECTION WELDS FOR FASTENERS MUST COMPLY
WITH DELTA ES-E4EB-1A252-A.

BG35 SPOT WELDS SHOWN ARE CLASS __3 __, SEE ES-E6DB-1N261-AA.

BG36 PIERCE NUTS MUST COMPLY WITH ES-N621822-S100.

BG41 FOR ENGINEERING APPROVED SOURCE, SEE THE WERS ENGINEERING NOTICE.

BG42 FOR CURRENT RELEASE STATUS, SEE THE WERS RELEASE NOTICE.

BG45 TO ENSURE LATEST LOCATOR INFORMATION, RETRIEVE THE LD LOCATOR DATA FILE.

BG46 CHANGES AFFECTING DESIGN COMPOSITION OR PROCESSING OF THE PART
PREVIOUSLY APPROVED FOR PRODUCTION REQUIRE PRIOR APPROVAL
FROM FORD PRODUCT ENGINEERING. REFER TO QS-9000.

MATERIALS: ASSEMBLY

TITLE BLOCK INFORMATION

THIS FILE IS THE PROPERTY OF _ Ford Motor Company

PART MUST COMPLY WITH SPECIFICATION WSS-M99P9999-A1
TO HELP SAFEGUARD HEALTH, SAFETY AND THE ENVIRONMENT.

DRAFTED IN ACCORDANCE WITH FORD ENGINEERING CAD &
DRAFTING STANDARDS CURRENT AT INITIAL RELEASE

CONTROL ITEM (INVERTED DELTA) N

TITLE 3F23-1727834-A

CAD TYPE 3-IDEAS (CctM/CtM)

CAD LOC METAPH

DESIGN E-KARU

REFERENCE MP-3F23-010101-B6

MFG DATA NO N/A

DIVISION N/A

PLANT N/A

OPER NO N/A

SAFETY N/A

UNIT N/A

BG01 GENERAL NOTES

BG18 PRODUCER TO ESTABLISH PRODUCT ENGINEERING/50A
APPROVED CONTROL PLAN

BG27 CORROSION PROTECTION FOR SERVICE PARTS MUST
COMPLY WITH FORD CUSTOMER SERVICE DIVISION (FCSD)
PACKAGING AND SHIPPING GUIDE

BG29 FOR ADDITIONAL GENERAL NOTES SEE ES-YF12-1294-AA
EXCEPT WHERE NOTED IN CONCERN C11529608.

BG30 FORD TRADEMARK WILL BE ON ALL END ITEMS IN ACCORDANCE
WITH E3 (FORD ENGINEERING CAD & DRAFTING STANDARD)

BG34 PROJECTION WELDS FOR FASTENERS MUST COMPLY
WITH DELTA ESE4EB-1A252-A.

BG35 SPOT WELDS SHOWN ARE CLASS _ _ 3_ _ . SEE ESE6DB-1N261-AA

BG36 PIERCE NUTS MUST COMPLY WITH ESN-621822-5100

BG41 FOR ENGINEERING APPROVED SOURCE. SEE THE VERS ENGINEERING NOTICE

BG42 FOR CURRENT RELEASE STATUS. SEE THE VERS RELEASE NOTICE

BG45 TO ENSURE LATEST LOCATOR INFORMATION, RETRIEVE
THE LD LOCATOR DATA FILE

BG46 CHANGES AFFECTING DESIGN COMPOSITION OR PROCESSING OF THE PART
PREVIOUSLY APPROVED FOR PRODUCTION REQUIRE PRIOR APPROVAL
FROM FORD PRODUCT ENGINEERING REFER TO QS-9000

BG53 MUST BE DATE CODE STAMPED IN ACCORDANCE WITH ESD1AB-11011-A

BG62 FOR DATUM A, REFERENCE THE LOCATOR SURFACES WITHIN THE
"DATUM GROUP" IN THE LATEST VERSION OF THE LD FILE. LOCATOR
SURFACES IN THE LD FILE ARE FOR POSITION ONLY, PRODUCT
GEOMETRY SURFACES REMAIN MASTER

MATERIALS: ASSEMBLY

EA12-003 001264

TITLE BLOCK INFORMATION

THIS FILE IS THE PROPERTY OF _ Ford Motor Company

PART MUST COMPLY WITH SPECIFICATION W55-M99P9999-A1
TO HELP SAFEGUARD HEALTH, SAFETY AND THE ENVIRONMENT

DRAFTED IN ACCORDANCE WITH FORD ENGINEERING CAD &
DRAFTING STANDARDS CURRENT AT INITIAL RELEASE

CONTROL ITEM (INVERTED DELTA) Y

TITLE N/A

CAD TYPE 3-IDEAS (CCM/CN)

CAD LOC METAPH

DESIGN MALTHERR

REFERENCE MP-3F23-010101-86

MFG DATA NO N/A

DIVISION N/A

PLANT N/A

OPER NO N/A

SAFETY N/A

UNIT N/A

=====
North American Notes

NOTES FOR PART ASSEMBLIES. (COMPONENT PARTS)
(FOR NORTH AMERICA ONLY)

BG01 GENERAL NOTES:

BG13 TOLERANCES UNLESS OTHERWISE SPECIFIED:
FOR SURFACE CLASS __3__ - - - - SEE ES-F75B-11007 A
MINIMUM BEND RADII __2__ - - -

BG18 PRODUCER TO ESTABLISH PRODUCT ENGINEERING/SOA
APPROVED CONTROL PLAN.

BG27 CORROSION PROTECTION FOR SERVICE PARTS MUST
COMPLY WITH FORD CUSTOMER SERVICE DIVISION (FCSO)
PACKAGING AND SHIPPING GUIDE.

BG29 FOR ADDITIONAL GENERAL NOTES SEE ES-YF12-1294-AA.

BG38 FORD TRADEMARK WILL BE ON ALL END ITEMS IN ACCORDANCE
WITH E3 (FORD ENGINEERING CAD & DRAFTING STANDARD)

BG41 FOR ENGINEERING APPROVED SOURCE SEE THE WERE
ENGINEERING NOTICE

BG42 FOR THE CURRENT RELEASE STATUS SEE THE WERE ENGINEERING NOTICE

BG43 DELTA CONTROL ITEM -THE DELTA ALSO IDENTIFIES CRITICAL CHARACTERISTICS
DESIGNATED BY THE CROSS FUNCTIONAL TEAMS DEVELOPING THE PRODUCT
THESE AND ADDITIONAL CRITICAL CHARACTERS IDENTIFIED BY PROCESS
REVIEWS. MUST APPEAR ON THE CONTROL PLANS ACCORDING TO QS 9000
THESE CONTROL PLANS REQUIRE PRODUCT ENGINEERING APPROVAL

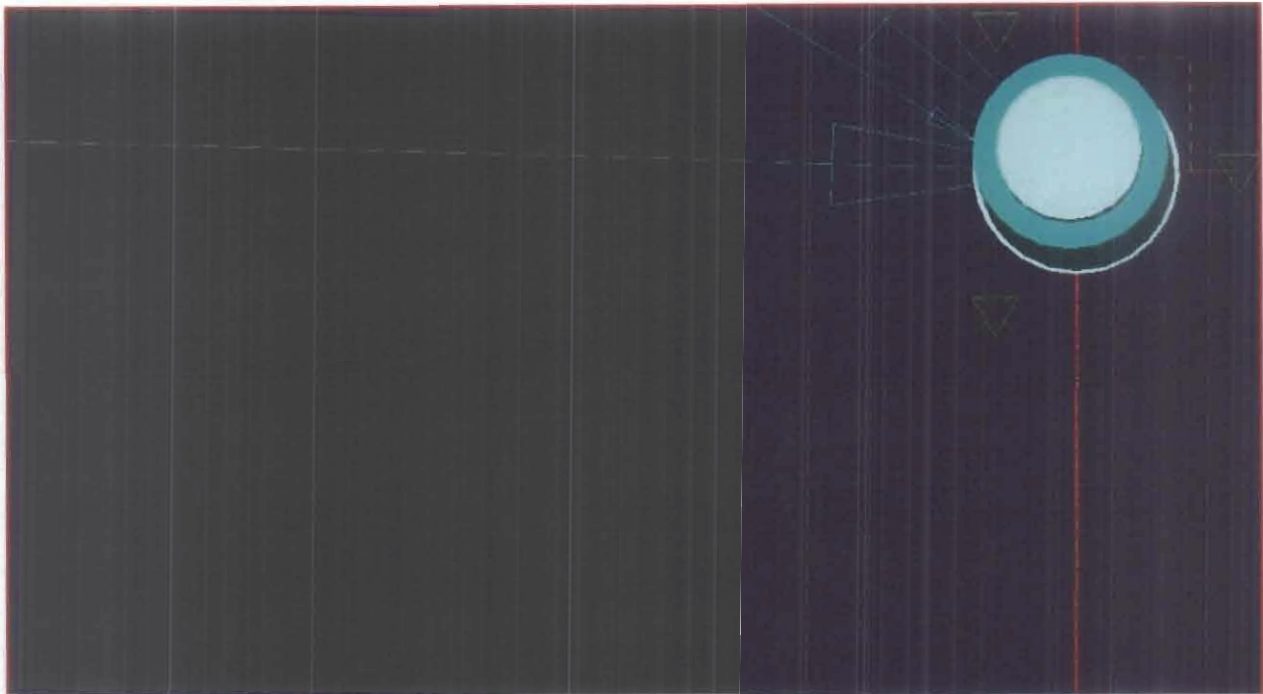
BG44 MUST BE DATE CODE STAMPED IN ACCORDANCE WITH ES-D1AB-11011-A

BG45 TO ENSURE LATEST LOCATOR INFORMATION RETRIEVE THE ID LOCATOR DATA FILE

BG46 CHANGES AFFECTING DESIGN, COMPOSITION OR PROCESSING OF THE PART
PREVIOUSLY APPROVED FOR PRODUCTION REQUIRE PRIOR APPROVAL
FROM FORD PRODUCT ENGINEERING REFER TO QS 9000.

REVISION BLOCK INFORMATION

LTRS	REVISIONS	
ORIGINATOR	CHECKER	ENGR APP MATL APP
A	- PDN #1 FOR 3F23-1767472-AA	010323
	MALTHERR FENGI RBLANCH5	MATL APP
B	- PDN #2 FOR 3F23-1767472-AA	010412
	MALTHERR FENGI RBLANCH5	MATL APP
C	- RELEASED 3F23-1767472-AA FOR PRODUCTION NB00-E-11195364-109	010629
D	- REVISED TO COMPONENTS 3F23-1767426-AB RELEASED 3F23-1767472-AB CAD COMPLETE DATE: 20010924 NB00-E-11248252-001	
	E-RNAIR E-AKULKAR EBENTLAG	MATL APP
	RELEASED 3F23-1767472-AC E1-WAS 3F23-1767426-AB CAD COMPLETED DATE: 020212 NB00-E-11294411-000	
	TDEVAULL	RVANSLYK
F	- RELEASED 3F23-1767472-AD REVISED 3F23-1767426-AD CAD COMPLETED DATE: 20020518 NB00-E-11347290-000	
	E-SURESH E-SKONGAR RVANSLYK	MATL APP
G	- REPLACED W705632 STUDS (3X) WITH N807319 STUDS (3X) RELEASED 3F23-1767472-AE NB00-E-11397272-001	020904
	E-BSRIRAM1 E-SKONGAR TJOSEPH1	MATL APP
H	- REPLACED N807319 STUDS (3X) WITH W710064-S300 STUDS (3X) RELEASED 3F23-1767472-AF NB00-E-11474434-000-001	030321
	K-KARU T-KALSI TJOSEPH1	MATL APP
J1	- REMOVED W710064-S300	
J2	- REVISED TO 3F23-1767426-AE	
J3	- ADDED 3F23-1767472-A2_WELD	
J4	- ADDED 3F23-1767472-A3_WELD RELEASED 3F23-1767472-AG NB00-E-11494692-000	030515
	DREAMER TCOSEO TJOSEPH1	MATL APP



Cleaving Vector	
Normal Vector	
Coordinated Entities	Screen
Display Flat To	Screen
Instance Name : WELDS_W710064/426_30	
Hierarchy Num. : 30	
In assembly : REINF ASV-RR ST CSHM LAT STRKR RH:3F23-1767472-A:37.Mein	
Spot Weld	
Part Name & Number	WELDS_W710064/426_3F23-1767472-A2_WELD:1
Description	2 thicknesses, Resistance, Critical
Label	A1-R
Associated Entities	
Validity Status	Valid
Text/Line Color	4 - CYAN / 7 - GREEN
Displayed Text/Line Color	4 - CYAN / 7 - GREEN
Diameter	0.00 millimeters
Joint Id	
Group Id	
Process	-/3
Location (X,Y,Z)	4460.59 619.42 1015.03
Reference Point Label	RF1
Approach Vector	
Cleaving Vector	
Normal Vector	
Coordinated Entities	Screen
Display Flat To	Screen
Use REDISPLAY icon to restore graphics after window resize.	

Is the direction

Select view opt

Pick entity to m

Pick entity to m

Pick entity to m

Pick entity to m

Pick entity to m

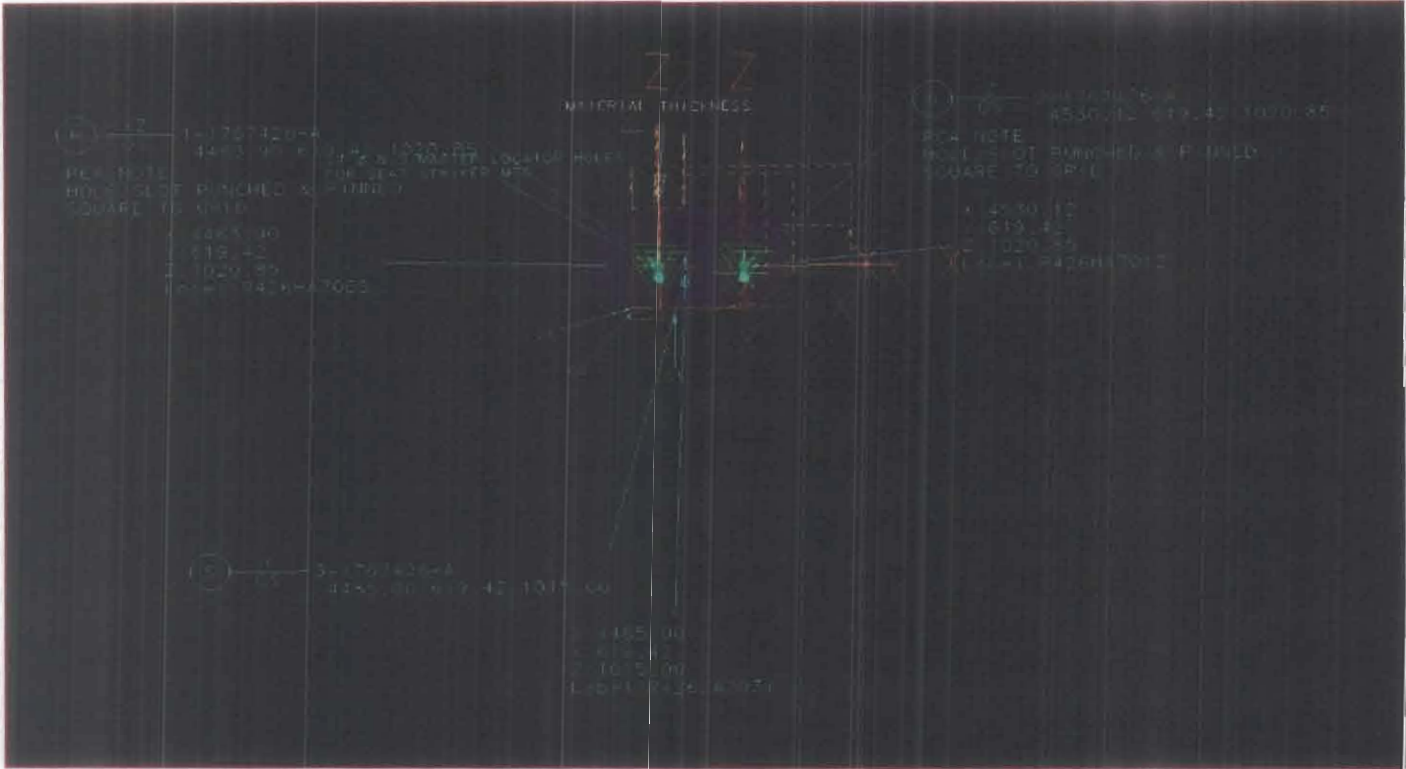
Pick entity to m

Pick entity to lis

Pick entity to lis

Pick entity to lis

Pick entity to lis



V299



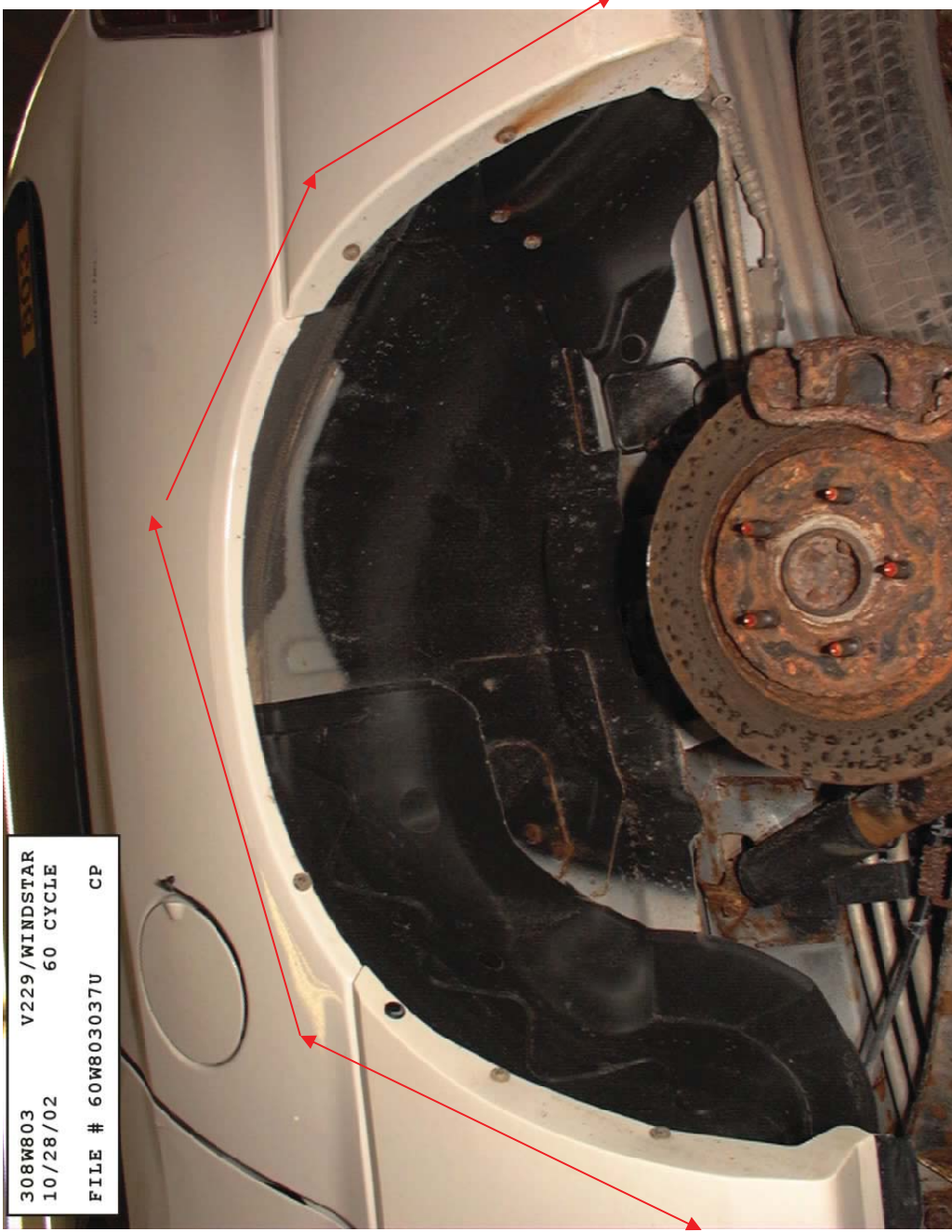
Cut from the rear floor pan out board

V299



Cut from this point of "D" pillar and forward of wheel house flange

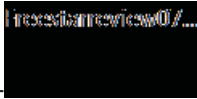
V299



Wheel house outer flange also of interest

From: Shastry, Sushil (S.)
Sent: Thursday, July 19, 2012 9:52 AM
To: Kolar, Ted (T.V.)
Subject: Wheel house - update

Hi Ted,



FYI-

Attached please find PP slide for today's EMM review meeting.

Thanks
Sushil

**Freestar: Wheel Well Corrosion
Service Fix**

July 19, 2012

Freestar: Wheel Well Corrosion Service Fix

- FEA Analysis
 - FMVSS 207/201 loading
 - A vs. B comparison analysis complete
 - Service fix/support bracket shows improvement in deflection
 - Final review meeting, next week - date TBD
- CR/Notice Release Status
 - Release for production tools: Support bracket and fasteners
 - NB00 E 12585059 000 is in process of approval
 - Add retainer/fastener part number
 - Prepare / check CAD files and release, 07/25/2012
- Patch Panel Prototypes
 - Wheel house tool (old tool–BSP) moved to Tower Automotive
 - Tower automotive made 30 LH/RH wheel house assemblies
 - Order prototype parts (Patch Panels)
 - Initiate GPIRS to build re-strike tool (Kirk site tool, 2 week lead time)
 - Vehicle build/patch panel tryout (08/06/2012 – 08/10/2012)
 - Review vehicle with service and safety team
 - Release patch panel design for tooling
 - Issue supplement/Add part numbers to NB00 E 12585059 000

From: Shastry, Sushil (S.)
Sent: Thursday, July 19, 2012 3:07 PM
To: Kolar, Ted (T.V.)
Subject: wheel house service fix project

Hi Ted,

FYI - Here is the updated PP slide showing next steps for the wheel house service fix project. I covered most of these items in today's conference call meeting with safety and service team.

Thanks



Sushil

Freestar: Wheel Well Corrosion Service Fix

EMM Review Meeting: July 19, 2012

Freestar: Wheel Well Corrosion Service Fix

- FEA Analysis
 - FMVSS 207/201 loading
 - A vs. B comparison analysis complete
 - Service fix/support bracket shows improvement in deflection
 - Final review meeting, next week - date TBD

- CR/Notice release status
 - Release for production tools: Support bracket and fasteners
 - NB00 E 12585059 000 is in process of approval
 - Add retainer/fastener part number
 - Prepare / check CAD files and release, 07/25/2012

Freestar: Wheel Well Corrosion Service Fix

- Patch panel prototypes parts and trial builds
 - Wheel house tool (old tool–BSP) moved to Tower Automotive
 - Tower automotive made 30 LH/RH wheel house assemblies
 - Order prototype parts (Patch panels) 07/23/2012
 - Initiate GPIRS to build re-strike tool (Kirk site tool, 2 week lead time)
 - Patch panel tryout (SLA/Stereoleth parts) on buck – 7/30/12 – 8/3/12
 - Patch panel tryout on vehicles (08/06/2012 – 08/10/2012)
 - Review vehicle with management /service/safety team – 08/15/2012
 - Release patch panel design for production tooling – 08/30/2012
 - Issue supplement/Add part numbers to NB00 E 12585059 000

From: Pancioli, Tim (T.N.)
Sent: Friday, February 10, 2012 11:38 AM
To: Shastry, Sushil (S.)
Subject: Wheel well corrosion assessment



Wheel well
corrosion assess...

Below is a corrosion assessment & repair plan that could be used to direct dealer service actions for this issue.

1) No to Very Little Corrosion

- Install Latch Striker Mount Kit
- Clean exterior wheel well area
- Apply sealer to seams
- Apply rustproofing

2) Level 1 - Minor Corrosion

Includes some rust growth, flaking, and leaking into vehicle, but wheel well structure integrity not compromised

- Install Latch Striker Mount Kit
- Clean exterior wheel well area
- Treat rusted areas by ?
- Apply sealer to seams
- Apply rustproofing

3) Level 2 - Significant Corrosion

Includes significant perforation and leaking into vehicle, but 80% or more of wheel well structure remains and 3rd row seat striker mountings are intact.

- Clean exterior wheel well area
- Cut out major rust and treat rusted areas by ?
- Install Latch Striker Mount Kit
- Install patch panel(s) and additional support brace
 - Driver side
 - Passenger Side
 - Both Sides
- Apply sealer to seams
- Apply rustproofing

4) Level 3 - Major Corrosion

Less than 80% of wheel well in area of 3rd row seat striker is intact. Striker is loose or detached.

- Clean exterior wheel well area
- Cut out major rust and treat rusted areas by ?
- Install Latch Striker Mount Kit
 - Install additional latch striker attaching hardware kit
- Install patch panel(s) and additional support brace
 - Driver side
 - Passenger Side
 - Both Sides
- Apply sealer to seams
- Apply rustproofing

2004 Wheelhouse 198897 R. H. (159K)



2004 Wheelhouse 198897 R.H. (159K)



2004 Wheelhouse 19897 R.H. (159K)



2004 Wheelhouse 19897 R. H. (159K)



2004 Wheelhouse 19897 R. H. (159K)



2004 Wheelhouse 19897 R. H. (159K)



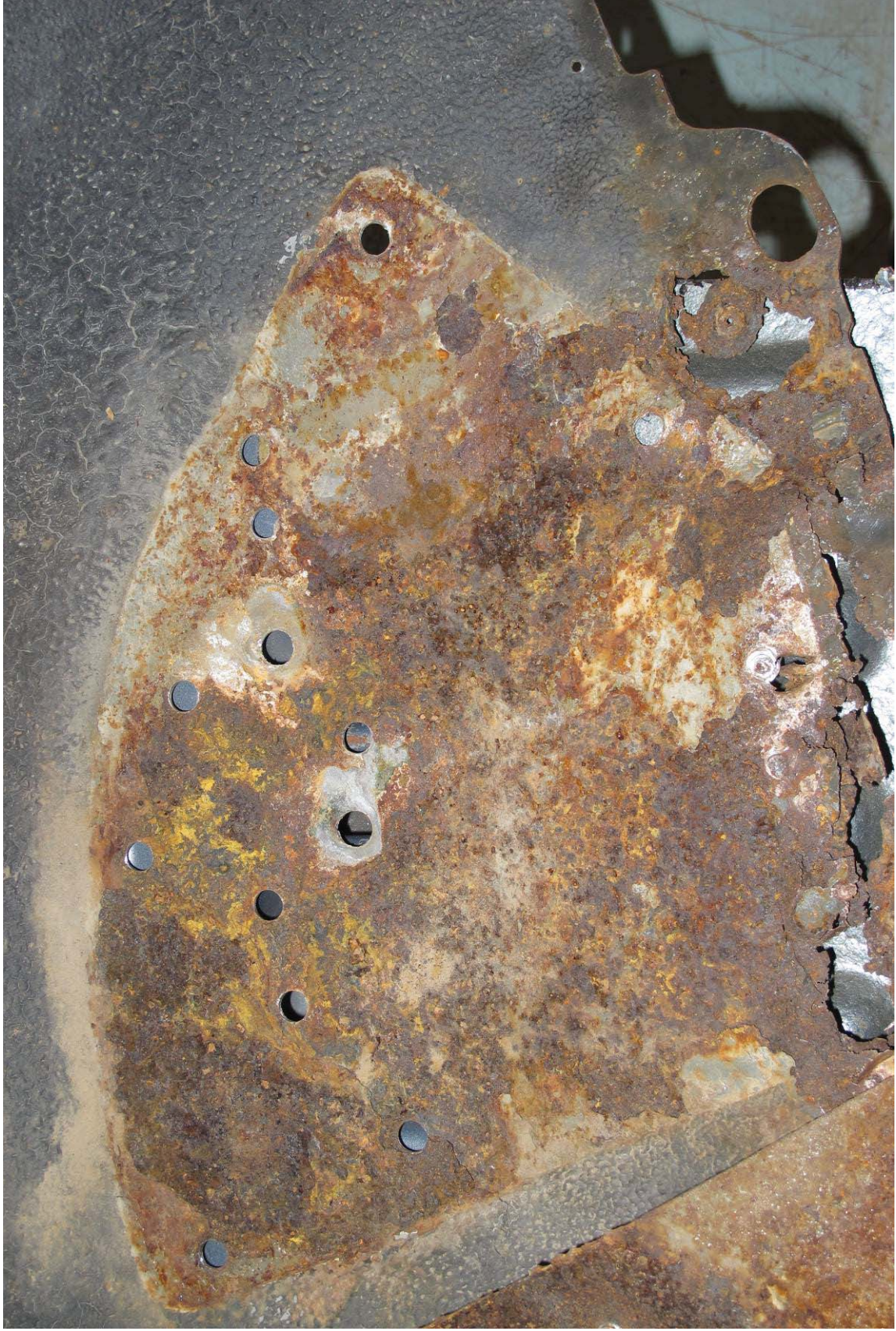
2004 Wheelhouse 19897 R. H. (159K)



2004 Wheelhouse 19897 R. H. (159K)



2004 Wheelhouse 19897 R. H. (159K)



2004 Wheelhouse 19476 L.H. (109K)



2004 Wheelhouse 19476 L.H. (109K)



2004 Wheelhouse 19476 L.H. (109K)



2004 Wheelhouse 19476 L.H. (109K)



2004 Wheelhouse 19476 L.H. (109K)



2004 Wheelhouse 19476 L.H. (109K)





EA12-003 001296



EA12-003 001297



EA12-003 001298