

EA12-001

CHRYSLER

10-4-2012

ENCLOSURE 4

FIELD DATA SUBJECT

CAIRs Backup

MFD BY DAIMLERCHRYSLER
CORPORATION

DATE OF MFR
9-02

GVWR
2427 KG(05350 LB)

GVWR FRONT
1248 KG(2750 LB) WITH TIRES
P215/75R16

RIMS AT
16X7 COLD
227 KPA(33 PSI)

GVWR REAR
1429 KG(3150 LB) WITH TIRES
R215/75R16

RIMS AT
16X7 COLD
227 KPA(33 PSI)

THIS VEHICLE CONFORMS TO ALL APPLICABLE FEDERAL MOTOR VEHICLE SAFETY AND THEFT
PREVENTION STANDARDS IN EFFECT ON THE DATE OF MANUFACTURE SHOWN ABOVE.

VIN: 1J4GK48K73W

TYPE: MPV

SINGLE X DUAL



MDH: 090508 776AB PNT:PB7

VEHICLE MADE IN U.S.A. TRM:MSLS 4648503



120006





LIBERTY sport















5915

DEALER MUST REMOVE PROTECTIVE COVER







ST REMOVE
COVER



5915

Jeep















2010 KIA SO4 4D
4016680 3 PL 442 140
KIA SO4
4016680 3 PL 442 140
KIA SO4



















-- PCM DTCs 1 of 1 --

ENGINE IS COLD
TOO LONG

Chrysler Hex Code : \$21

SAE Trouble Code : P 1281

DTC Specific Good Trips : 0

Starts Since Set : 208

-- ORC DTCs 1 of 8 --

OUTPUT DRIVER 1

--- DTC 2 of 8 ---

INTERNAL 1

-- ORC DTCs 2 of 8 --

INTERNAL 1

--- DTC 3 of 8 ---

PASSENGER SQUIB 1
SHORT TO GROUND

-- ORC DTCs 4 of 8 --

AIRBAG WARNING INDICATOR
OPEN

--- DTC 5 of 8 ---

DRIVER SQUIB 2
SHORT TO GROUND

-- ORC DTCs 6 of 8 --

PASSENGER SQUIB 2
SHORT TO GROUND

--- DTC 7 of 8 ---

NO LEFT FRONT IMPACT
SENSOR COMMUNICATION

-- ORC DTCs 7 of 8 --

NO LEFT FRONT IMPACT
SENSOR COMMUNICATION

--- DTC 8 of 8 ---

NO RIGHT FRONT IMPACT
SENSOR COMMUNICATION

EA12-001

CHRYSLER

10-4-2012

ENCLOSURE 4

FIELD DATA SUBJECT

CAIRs Backup

MFD BY DAIMLERCHRYSLER CORPORATION DATE OF MFR 1-03 GVWR 2427 KG(05350 LB)

GAWR FRONT	WITH TIRES	RIMS AT	COLD
1248 KG(2750 LB)	P215/75R16	16X7	227 KPA(33 PSI)
GAWR REAR	WITH TIRES	RIMS AT	COLD
1429 KG(3150 LB)	R215/75R16	16X7	227 KPA(33 PSI)

THIS VEHICLE CONFORMS TO ALL APPLICABLE FEDERAL MOTOR VEHICLE SAFETY AND THEFT PREVENTION STANDARDS IN EFFECT ON THE DATE OF MANUFACTURE SHOWN ABOVE.

VIN: 1J4GK48K73[REDACTED] TYPE: MPV SINGLE X DUAL



MDH: 011622 776AC PNT:PR4 VEHICLE MADE IN U.S.A. TRM:MSL5 4648503



Jeep









GALEANA
Jeep

3.7L



GALENA
CHEROKEE
Jeep



LIBERTY sport



















4838-100
079AA

882487
EVA









3530
3530

1-800-4-A-CAR

A close-up photograph of a person's hand pointing at a car window. A white sticker with a Vehicle Identification Number (VIN) is affixed to the glass. The VIN is partially obscured by a black redaction box. The background shows a bright, overexposed sky with some clouds.

1J4GK48K73W [REDACTED]



Clipboard with a checklist. The checklist includes the following items:

- Exterior
- Interior
- Engine
- Transmission
- Brakes
- Steering
- Electrical
- Fluids
- Wash & Wax
- Final Inspection

Document on the passenger seat. The document includes the following sections:

- Customer Information
- Vehicle Information
- Service Description
- Estimated Total
- Payment Method
- Signature

PRESS







1139

TRW

H01-07

515021R

MEETS FMVSS 209
ASSEMBLED IN MEXICO

TR135427365



P5HG331L8AH



INSTALL ONLY

WITH AN AIRBAG

A INSTALLER

SEULEMENT AV

IN SAC GONFLA







AIR BAG



AIR
BAG





TYPE 35

door



WARNING

DEATH OR SERIOUS INJURY CAN OCCUR

- CHILDREN 12 AND UNDER CAN BE KILLED BY THE AIR BAG.
- THE **BACK SEAT** IS THE **SAFEST** PLACE FOR CHILDREN.
- **NEVER** PUT A REAR-FACING CHILD SEAT IN THE FRONT.
- SIT AS FAR BACK AS POSSIBLE FROM THE AIR BAG.
- **ALWAYS** USE SEAT BELTS AND CHILD RESTRAINTS.

WARNING: HIGHER ROLLOVER RISK

	<p>AVOID ABRUPT MANEUVERS AND EXCESSIVE SPEED.</p> <p>ALWAYS BUCKLE UP.</p> <p>SEE OWNER'S MANUAL FOR FURTHER INFORMATION.</p>	
--	--	---

WARNING



DEATH OR SERIOUS INJURY CAN OCCUR

- CHILDREN 12 AND UNDER CAN BE KILLED BY THE AIR BAG.
- THE **BACK SEAT** IS THE **SAFEST** PLACE FOR CHILDREN.
- **NEVER** PUT A REAR-FACING CHILD SEAT IN THE FRONT.
- SIT AS FAR BACK AS POSSIBLE FROM THE AIR BAG.
- **ALWAYS** USE **SEAT BELTS** AND **CHILD RESTRAINTS**.





Jeep

11:19

SEEK AM FM SET
TUNE MODE
CD
PRESET 1 2 3 4 5 6
BALANCE

1 2 3 4
5 6 7 8 9 10
11 12 13 14 15 16 17 18 19 20 21 22 23 24 25 26 27 28 29 30 31 32 33 34 35 36 37 38 39 40 41 42 43 44 45 46 47 48 49 50 51 52 53 54 55 56 57 58 59 60 61 62 63 64 65 66 67 68 69 70 71 72 73 74 75 76 77 78 79 80 81 82 83 84 85 86 87 88 89 90 91 92 93 94 95 96 97 98 99 100



DAIMLER CHRYSLER



P5HG371L8AH



TR4351252758









DAIMLER CHRYSLER



P5HG361L8AH



TR5350251577









P5HG341L8AF

TR2006384438



MAGNETIC BASE



A close-up, front-facing view of a red Jeep SUV. The image focuses on the hood and the upper grille area. The hood is a vibrant red with a glossy finish, reflecting the surrounding environment. In the center of the hood, the word "Jeep" is printed in a white, bold, sans-serif font. Below the hood, the top of the black grille is visible, featuring seven vertical slats. The left and right headlights are partially visible on the sides. The background shows a parking lot with other vehicles and a building under a clear sky.

Jeep







Jeep

2.4L I4

AUTOCRAFT

SAFETY INFORMATION
SAFETY INFORMATION
SAFETY INFORMATION



RELEASE LATCH
FOR ACCESS TO
FUSES AND RELAYS

AUTO CRAFT
Available starting power
for all vehicles

AUTO CRAFT
SILVER
34-1 660 B25 115

LIASES
CAN CAUSE BURNING
OR HEAVY

SPARKS
FLAMES
SMOKING

CAN CAUSE
BURNING OR
SEVERE DAMAGE

FUEL
CAUTION
FUEL
CAUTION

DO NOT USE FOR
POWER STEERING
SAVED OIL

750

67504





950441924E
1995

1995001

C5



MAX 1.500
MIN 0.500

24862027
3110

30644 19
HFBAD
83

11/22/14

NEVER
PARTY OF THE LEVER - ATTENTION - NE TOYER - ATTENTION - NE TOYER
REMOVING - WARNING - CLEAN FILLER CAP BEFORE REMOVING - WARNING - CLEAN FILLER CAP BEFORE
DE BOUCHON DE REPLENIR - ATTENTION - NE TOYER - ATTENTION - NE TOYER
REMOVING - WARNING - CLEAN FILLER CAP BEFORE REMOVING - WARNING - CLEAN FILLER CAP BEFORE

AUTOCRA

Operating 82°F
Angle at 32°
DANOKO VA-24

KEEP OUT OF THE REACH OF CHILDREN
DO NOT TIP. KEEP YERT CAPS TIGHT AND LEVEL
RETURN
LEAS
FLUSH EYES IMMEDIATELY
WITH WATER. GET
HELP FAST

MAX
STEERING ASSIST ONLY
CONST. FLOW FLUID
30W & SEALED
CONTAINER

34666037

MINI

LU6017

TRW
P62128326AE
34066716
LH



ATTENTION

R-134a A/C REFRIGERANT
FACTORY CHARGE:

0.624 kg (1.37 lbs.) PART No. 82300101

COMPRESSOR OIL:

2.4/3.7L SP-15 240cc PART No. 04886129AA
2.5 TD ND-6 180cc PART No. 82300102

⚠ WARNING

**HIGH-PRESSURE REFRIGERANT SYSTEM
TO BE SERVICED BY QUALIFIED PERSONNEL ONLY.**

CONSULT SERVICE MANUAL.
IMPROPER SERVICE METHODS MAY CAUSE PERSONAL INJURY.
SYSTEM MEETS SAFETY REQUIREMENTS OF SAE STANDARD J639.

DaimlerChrysler
Corporation

55037464AD

5212 8776AC



DaimlerChrysler Corporation

VEHICLE EMISSION CONTROL INFORMATION

THIS VEHICLE CONFORMS TO BIN 8 OF THE U.S. EPA INTERIM NON-TIER 2 REGULATIONS APPLICABLE TO 2003 MODEL YEAR NEW LIGHT-DUTY TRUCKS AND QUALIFIES AS LEV1 UNDER NEWLY REGULATIONS AND ULEV 1 UNDER CALIFORNIA CLEANEST VEHICLE REGULATIONS. VEHICLE CONFORMS TO U.S. EPA REGULATIONS APPLICABLE TO 2003 MODEL YEAR NEW LEV LIGHT-DUTY TRUCKS, CLEAN FUEL FLEET VEHICLE REGULATIONS, CERTIFICATION GASOLINE FUEL PER 98-113-94(a), SFTP COMPLIANT.

BASIC IGNITION TIMING AND BLEND/FUEL/AIR MIXTURE HAVE BEEN PRESET AT THE FACTORY. SEE THE SERVICE MANUAL FOR PROPER PROCEDURES AND OTHER ADDITIONAL INFORMATION.

ADJUSTMENTS MADE BY OTHER THAN APPROVED SERVICE MANUAL PROCEDURES MAY VIOLATE FEDERAL AND STATE LAWS.

CAUTION: APPLY PARKING BRAKE WHEN SERVICING VEHICLE.

2H02S(2), 0BDII
CERTIFIED, SFI, TWC, 2WUOC

SPARK PLUGS ZFR6F-11G
0.040 in. GAP

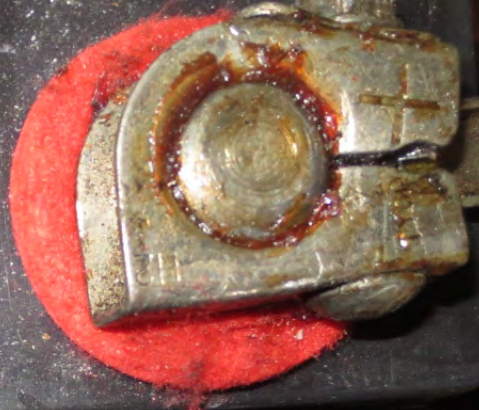
3.7 LITER
NO ADJUSTMENTS
NEEDED

3CRXT03.7220
3CRXR0155GCH

CATALYST

7 21112 7682 9

TELETYPE
EACH OF CHILDREN
BAPS TIGHT AND LEVEL
LEAD
RETURN









110

120

C

114356

TRIP

TRIP





DRB III™

This Diagnostic Control
Module is not supported by
this software. Please use the
DRB III with the Supercard
software to diagnose this
module.

F1
HELP

F2
SYS

F3
MAIN

64.1



CHRYSLER
CORPORATION

DRB III™

This Diagnostic Control
Module is not supported by
this software. Please use the
DRB III with the Supercard
software to diagnose this
vehicle.

F1
HELP

F2
SYS



**CHRYSLER
CORPORATION**

DRB III™

This Diagnostic Control
Module is not supported by
this software. Please use the
DRB III with the Supercard
software to diagnose this
vehicle.

F1
HELP

F2
SYS
64.1

F3
MAIN

















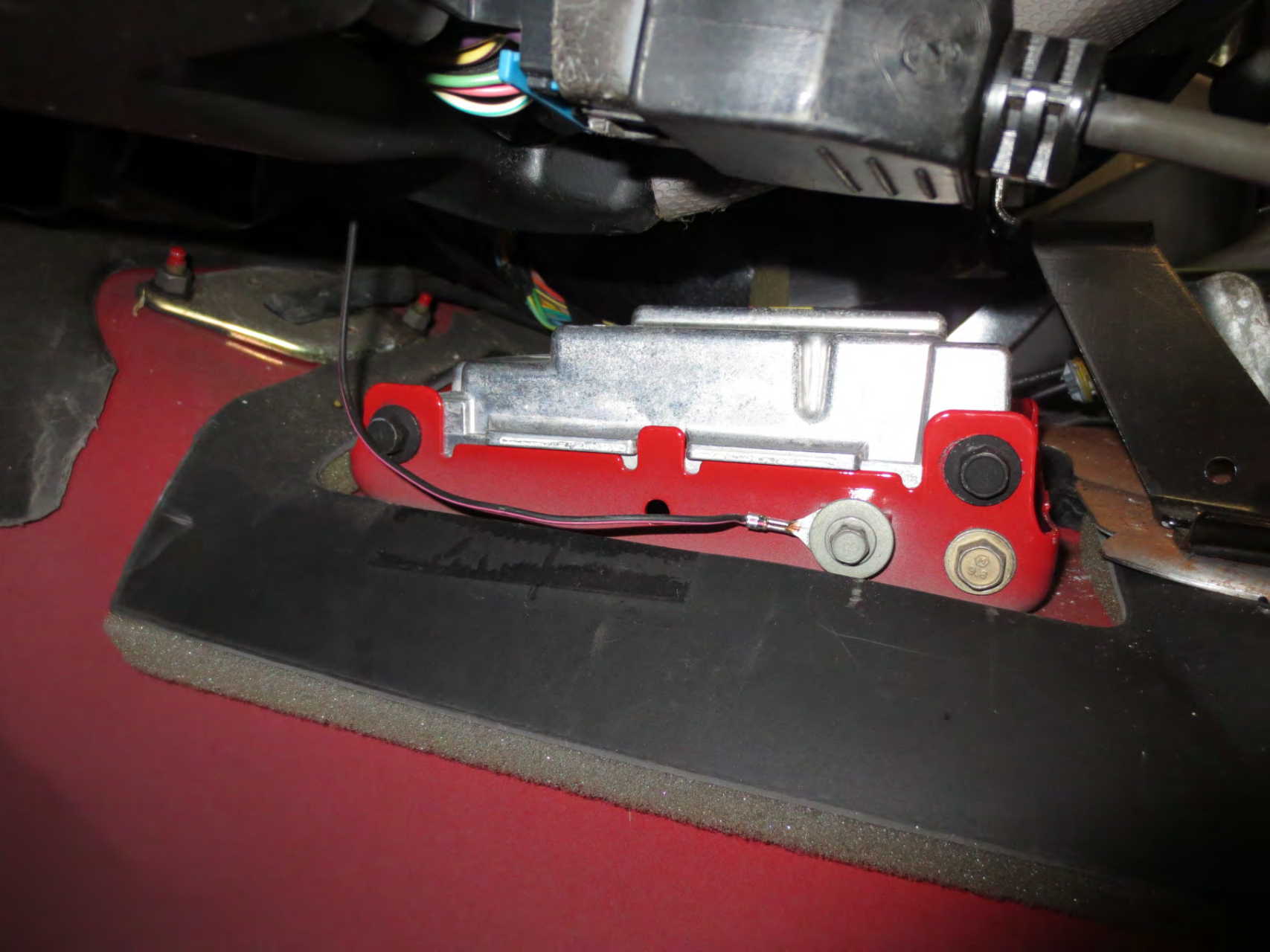


APPLY BRAKE
P R N D
1 2









CHRYSLER P/N 95010971A1
WARNING: REFER TO SERVICE MANUAL BEFORE SERVICE
IMPROPER SERVICING CAN RESULT IN AIR BAG SYSTEM
FAILURE AND POSSIBLE INJURY AND/OR DEATH
CHRYSLER SN TRME32Z2E2923



CHRYSLER P/N P56010501A1
CHRYSLER S/N TRFNE3572E0783
WARNING, REFER TO SERVICE MANUAL BEFORE SERVICING
FAILURE AND POSSIBLE DRIVER AND/OR PASSENGER INJURY
IMPROPER SERVICING CAN RESULT IN AIR BAG SYSTEM

CHRYSLER PN P56010504L
WARNING. REFER TO SERVICE MANUAL FOR
IMPROPER SERVICING CAN RESULT IN
FAILURE AND POSSIBLE DRIVER INJURY
CHRYSLER SN TRF96C517575
TRENDS



NON-TOXIC
PATENT # 6,168,088

**NEW LEATHER™
AIR FRESHENER**

PLACE ONE WAFER UNDER AUTO SEAT. ALSO USE
IN HOME, OFFICE, BOAT, P.V., CLOSET, RESTROOM,
TRASH CAN, LOCKER, PRACTICALLY ANYWHERE!
CAUTION: KEEP AWAY FROM CHILDREN.
DO NOT PLACE WAFER ON DASHBOARD, SEATS,
CONSOLE, WASHING SURFACE, FLOOR MATS OR
ANY VISIBLE CARPET AREA.

www.wonderwafers.com



**NEW LEATHER™
AIR FRESHENER**

PLACE ONE WATERBOTTLE UNDER AUTO SEAT. ALSO USE IN HOME, OFFICE, BOAT, B.V., CLOSET, RESTROOM, TRASH CAN, LOCKER. PRACTICALLY ANYWHERE!
CAUTION: KEEP AWAY FROM CHILDREN.
DO NOT PLACE WATERBOTTLE ON PASSENGER SEATS, CONSOLES, WOODEN SURFACES, FLOOR MATS OR ANY VISIBLE CARPET AREA.

www.wonderwaters.com



101-07
1-321R
200

101-07
1-321R
200



SAFARI
400 02 00001







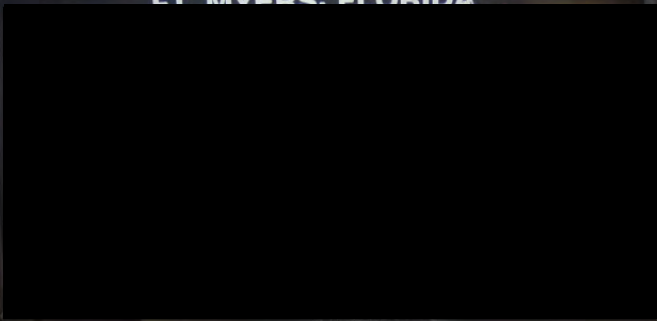






Jeep

FT. MYERS, FLORIDA



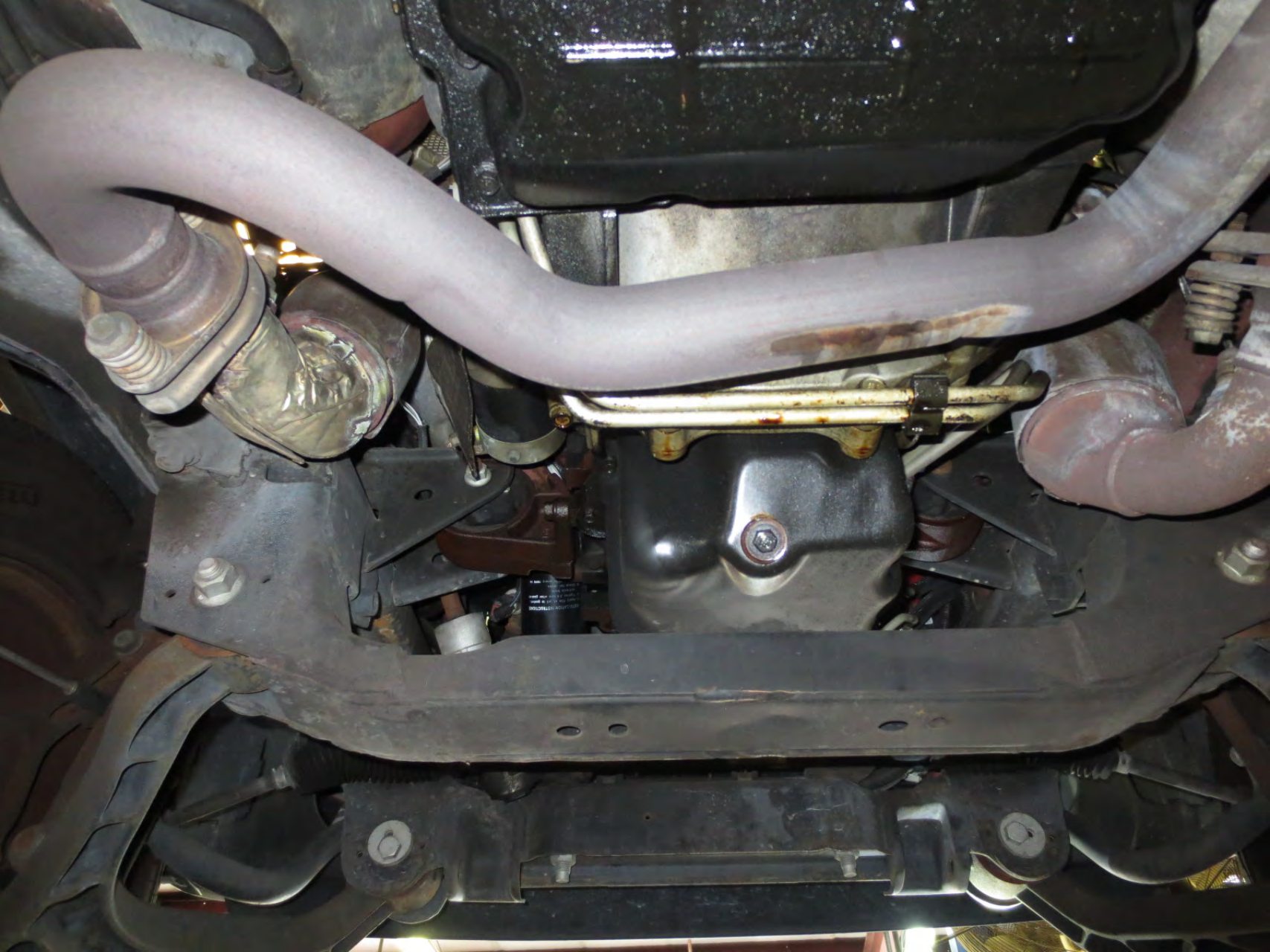




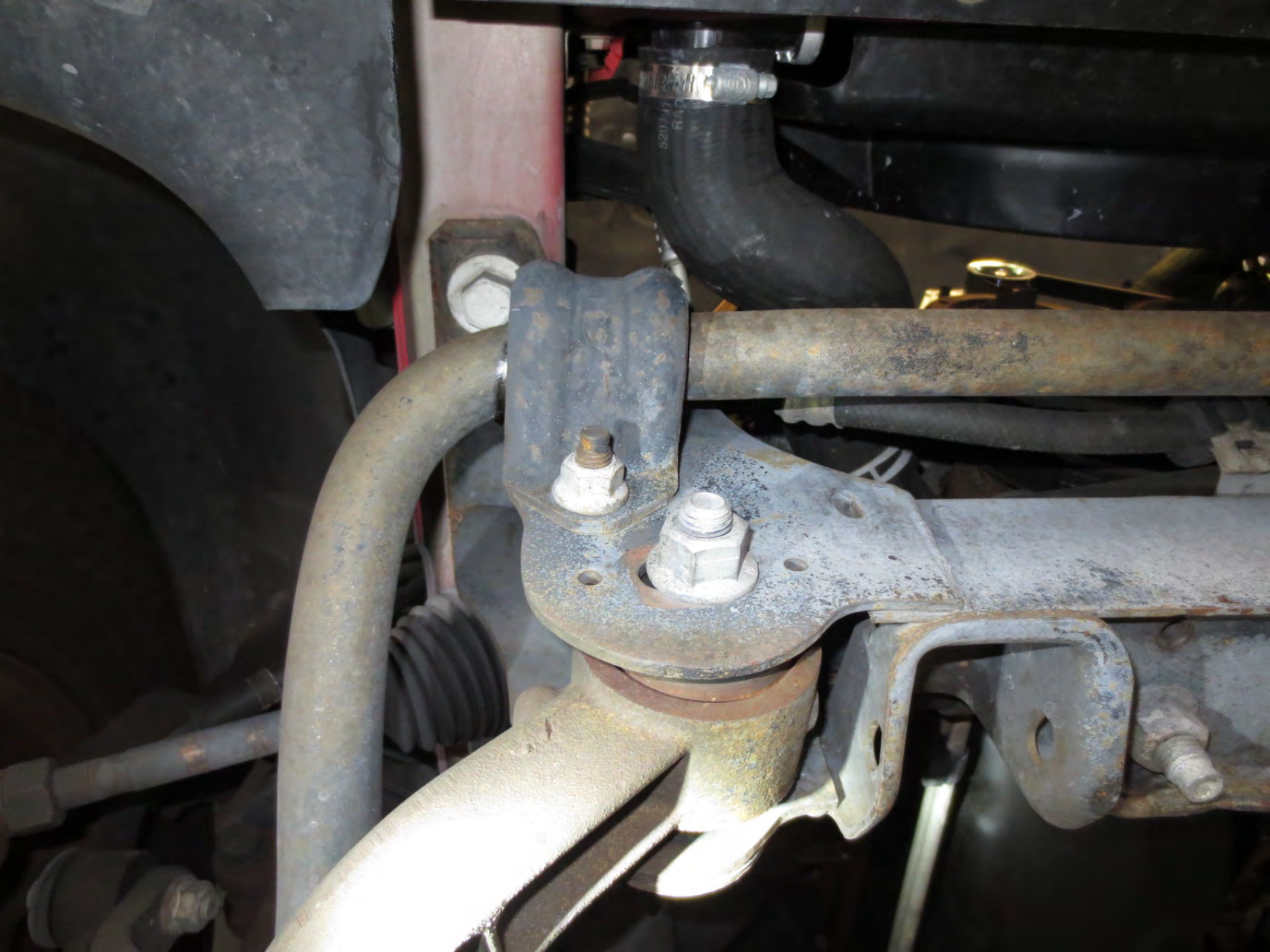




























EA12-001

CHRYSLER

10-4-2012

ENCLOSURE 4

FIELD DATA SUBJECT

CAIRs Backup
























LEFT
FRONT




A close-up photograph of a person's hand holding a small white card in front of a silver alloy car wheel. The wheel has five spokes and several lug nuts are visible. The card has handwritten text in black ink.

LEFT: 11

REAR: 073




A close-up photograph of a silver alloy car wheel. A person's hand is visible on the left side, holding a small white rectangular card in front of the wheel's center. The card has the words "RIGHT" and "REAR" written on it in black, hand-drawn capital letters. The wheel has five spokes and a central hub with a bolt. The background is dark and out of focus.

RIGHT

REAR



A close-up photograph of a person's hand holding a small, white, lined notepad against a silver alloy car wheel. The wheel has five spokes and a hubcap. The notepad is held in the center of the wheel, and the text 'RIGHT FRONT' is written on it in black marker. The background is dark, suggesting the interior of a car.

RIGHT
FRONT



MFD BY DAIMLERCHRYSLER
CORPORATION

DATE OF MFR
7-02

GVWR
2427 KG(05350 LB)

GVWR FRONT WITH TIRES
1248 KG(2750 LB) P235/70R16

RIMS AT COLD
16X7 227 KPA(33 PSI)

GVWR REAR WITH TIRES
1429 KG(3150 LB) P235/70R16

RIMS AT COLD
16X7 227 KPA(33 PSI)

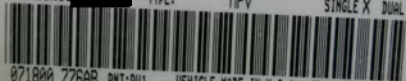
THIS VEHICLE CONFORMS TO ALL APPLICABLE FEDERAL MOTOR VEHICLE SAFETY AND THEFT
PREVENTION STANDARDS IN EFFECT ON THE DATE OF MANUFACTURE SHOWN ABOVE.

VIN: 1J4GK58K13

TYPE:

MPV

SINGLE X DUAL



MDH:

071800 776AB PNT:PW1

VEHICLE MADE IN U.S.A. TRM:XJDU 4648503

MPH km/h

200

120

TYPE 35

173208



7151

Jeep





Jeep

Jeep
LIBERTY

3.7L









PRESS







Toto







DAIMLER CHRYSLER



P5HG371DVAH



TR4176279948

TRW

H02-49

262022N

MEETS FMVSS 209
ASSEMBLED IN MEXICO

TRW

H02-49

262022N

MEETS FMVSS 209
ASSEMBLED IN MEXICO

DANGER CLOTHES



P5HG8715VAH



FR4176270048

DAIMLER CHRYSLER



P5HG371DVAH



TR4176279948









A close-up photograph of a metal tool, possibly a saw blade or a similar cutting instrument. The tool has a black plastic handle and a grey fabric strap. The metal part is silver and has a rectangular hole at the top. The number "TC314" is stamped on the metal. A person's hand is visible, holding the tool. The background is dark and out of focus.

TC314





FD 102









TRW H02-50

282022N

MEETS FMVSS 209
ASSEMBLED IN MEXICO

DAIMLER CHRYSLER



P5HG361DVAH



TR5191286359

















H01-06

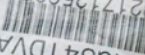
254023R

MEETS FMVSS 200
ASSEMBLED IN MEXICO

DAIMLER
TRYSLEK



P5HG341DVAF



TR2171256072



H01-07

3R

SETS FMVSS 209

THE HERTZ CO

STULEMB
UN SAC 3

DANI

PSHG331D

TR11G

























7151









TRANS
TEMP



1000000

WARNING

DEATH OR SERIOUS INJURY CAN OCCUR



- CHILDREN 12 AND UNDER CAN BE KILLED BY THE AIR BAG
- THE BACK SEAT IS THE SAFEST PLACE FOR CHILDREN
- NEVER PUT A FORWARD-FACING CHILD SEAT IN THE FRONT
- GET AS FAR BACK AS POSSIBLE FROM THE AIR BAG
- ALWAYS USE SEAT BELTS AND CHILD RESTRAINTS

WARNING: HIGHER ROLLOVER RISK



AVOID ABRUPT MANEUVERS
AND EXCESSIVE SPEED.

ALWAYS BUCKLE UP

SEE OWNER'S MANUAL
FOR FURTHER INFORMATION



⚠ WARNING



DEATH OR SERIOUS INJURY CAN OCCUR

- CHILDREN 12 AND UNDER CAN BE KILLED BY THE AIR BAG
- THE BACK SEAT IS THE SAFEST PLACE FOR CHILDREN
- NEVER PUT A REAR-FACING CHILD SEAT IN THE FRONT
- SIT AS FAR BACK AS POSSIBLE FROM THE AIR BAG
- ALWAYS USE SEAT BELTS AND CHILD RESTRAINTS













































DAIMLER CHRYSLER

P5HK44XDVAB

TR616523128





78824

A close-up photograph of a metal tool, possibly a seam ripper or a similar fabric tool, being used on a dark, textured fabric. The tool has a silver-colored metal head with a rectangular slot at the top. The number 'TC314' is stamped in a sans-serif font on the side of the metal head. A person's thumb is visible on the left, holding the tool. The background is dark and out of focus.

TC314

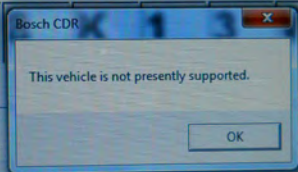






Vehicle Identification Number

G K 5 X 1 3 W



Cancel

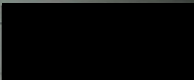


Read VIN from Vehicle



Vehicle Identification Number

1 J 4 G K 5 **K 1 J W**



Book CD
This vehicle is not presently supported.
OK

Done

Cancel

Clear

1) Make sure ORB
is properly connected to the
Data Connector.

- 1) Ignition is turned on
- 2) ORB III is properly
connected to the Data
Connector.

HELP

BY8

MAIN

04.1

Unable to ID Module for
ORC

press any key to continue

7

PCM DTCs

NO DTCs DETECTED

Starts Since Clear : 137

Page back to exit

Powertrain Control Module Info

2003 KJ 3.7L V6 SFI

Module: Cal 16.0, APR 03

Natural Asp, Unleaded Fuel

Low Emission Vehicle (NBV)

Automatic Trans, RW Drive

3600 Truck Engine, JTEC+

Single Fan, Variable Speed

PCM Part#: 56044623AE

Demologation ID: FBKABB

CARB OBD II Vehicle

EA12-001

CHRYSLER

10-4-2012

ENCLOSURE 4

FIELD DATA SUBJECT

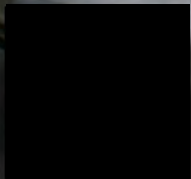
CAIRs Backup



Jeep



Jeep





LIBERTY *sport*



LIBERTY 5000





Jeep

3.7L

FOCUS

2.0



3.7L



CAUTION
DO NOT PLAY
ON OR AROUND





1J4GK48K53W

MFD BY DAIMLERCHRYSLER
CORPORATION

DATE OF MFR
8-02

GVWR
2427 KG(05350 LB)

GVWR FRONT WITH TIRES
1248 KG(2750 LB) P215/75R16

RIMS AT
16X7

COLD
227 KPA(33 PSI)

GVWR REAR WITH TIRES
1429 KG(3150 LB) R215/75R16

RIMS AT
16X7

COLD
227 KPA(33 PSI)

THIS VEHICLE CONFORMS TO ALL APPLICABLE FEDERAL MOTOR VEHICLE SAFETY AND THEFT
PREVENTION STANDARDS IN EFFECT ON THE DATE OF MANUFACTURE SHOWN ABOVE.

VIN: 1J4GK48K53W [REDACTED]

TYPE:

MPV

SINGLE X DUAL



MDH: 082911 776AB PNT:PS2

VEHICLE MADE IN U.S.A. TRM:MSDU 4648503







10123





TRW 33014254-D (17)





PRESS



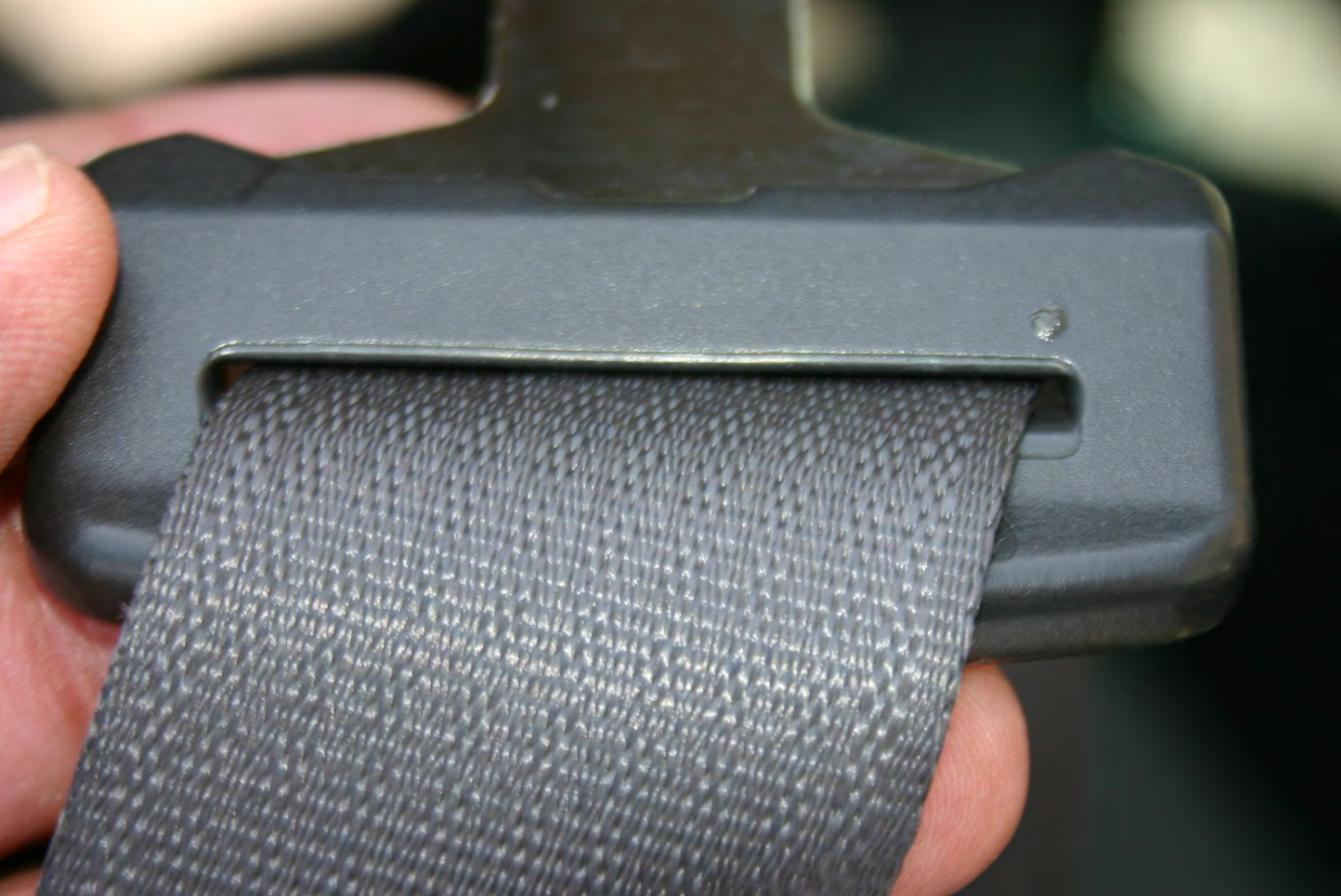


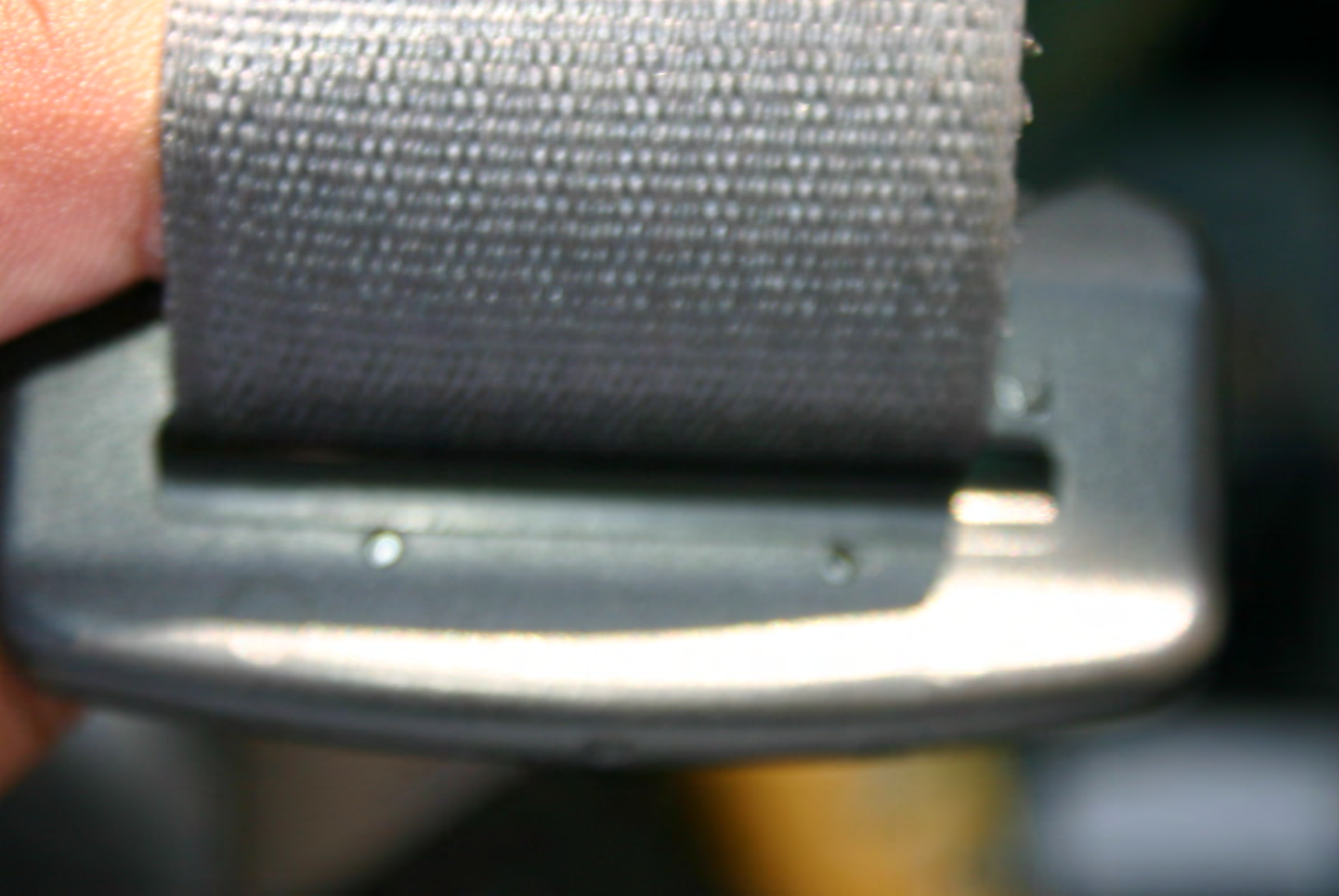






10 119





TRW 33014254-D (19)



SUPER



PRESS

Jeep

piolín
por la Mañana

LA NUEVA
101.9





















ATTENTION
If you are equipped with a factory-installed engine, please refer to the owner's manual for proper maintenance and use of the engine. For more information, please contact your dealer or the nearest authorized service center.

WARNING
To avoid personal injury, always use proper lifting techniques. Do not attempt to lift or move the engine or any other component of the engine compartment unless you are properly trained and equipped. Always use proper tie-down technique. Always use proper tie-down technique. Always use proper tie-down technique.

COMPRESSOR OIL
SAFETY INFORMATION
SAFETY INFORMATION
SAFETY INFORMATION

877-868-6
Catalyst
Catalyst
Catalyst







56041891AD
Rev. A
64469D
2282E





30

20

10

60
40
20

MPH km/h

140
160
180
200

100

110

120

TYPE 35

126861

C

WARNING

DEATH OR SERIOUS INJURY CAN OCCUR

- CHILDREN 12 AND UNDER CAN BE KILLED BY THE AIR BAG.
- THE **BACK SEAT** IS THE **SAFEST** PLACE FOR CHILDREN.
- **NEVER** PUT A REAR-FACING CHILD SEAT IN THE FRONT.
- SIT AS FAR BACK AS POSSIBLE FROM THE AIR BAG.
- **ALWAYS** USE SEAT BELTS AND CHILD RESTRAINTS.

WARNING: HIGHER ROLLOVER RISK



AVOID ABRUPT MANEUVERS
AND EXCESSIVE SPEED.

ALWAYS BUCKLE UP.

SEE OWNER'S MANUAL
FOR FURTHER INFORMATION.



WARNING



**DEATH OR SERIOUS
INJURY CAN OCCUR**

- CHILDREN 12 AND UNDER CANNOT BE SEATED IN THE REAR SEAT
- THE REAR SEAT IS THE SAFEST PLACE FOR CHILDREN
- NEVER PUT A CHILD FACING ONLY OUT IN THE FRONT
- SIT AS FAR BACK AS POSSIBLE FROM THE AIR BAG
- ALWAYS USE SEAT BELT AND CHILD RESTRAINTS

SELECT SYSTEM

1. Engine
2. Transmission & T-Case
3. Body Interior
4. Chassis & Body Exterior
5. Anti-lock Brakes
6. Passive Restraints
7. Theft Alarm
8. System Monitors

Page 1 of

HELP

SYS

MAIN



SELECT RESTRAINTS

1. Airbag
2. Side Airbags
3. Airbag On/Off Switch S
4. Occupant Classification

SELECT SYSTEM

1. Engine
2. Transmission & T-Case
3. Body Interior
4. Chassis & Body Exterior
5. Anti-lock Brakes
6. Passive Restraints
7. Theft Alarm
8. System Monitors

Page 1 of 1

PC

HELP

SYS

IN

SELECT RESTRAINT SYSTEM

1. Airbag
2. Side Airbags
3. Airbag On/Off Switch System
4. Occupant Classification System

This Diagnostic Control
Module is not supported by
this software. Please use the
DRB III with the Supercard
software to diagnose this
vehicle.



SO REAL
TWIN

MAGNETIC BASE





STEELE
10
PACKERS

MAGNETIC BASE



EA12-001

CHRYSLER

10-4-2012

ENCLOSURE 4

FIELD DATA SUBJECT

CAIRs Backup

AIR BAG



MFD BY DAIMLERCHRYSLER
CORPORATION

DATE OF MFR
10-02

GVWR
2541 KG(05600 LB)

GAWR FRONT WITH TIRES
1248 KG(2750 LB) P215/75R16

RIMS AT
16X7

COLD
227 KPA(33 PSI)

GAWR REAR WITH TIRES
1429 KG(3150 LB) R215/75R16

RIMS AT
16X7

COLD
227 KPA(33 PSI)

THIS VEHICLE CONFORMS TO ALL APPLICABLE FEDERAL MOTOR VEHICLE SAFETY AND THEFT
PREVENTION STANDARDS IN EFFECT ON THE DATE OF MANUFACTURE SHOWN ABOVE.

VIN: 1J4GL48K83W

TYPE:

MPV

SINGLE X DUAL



MDH: 100218 776AB PNT:PS2

VEHICLE MADE IN U.S.A. TRM:M5DU 4648503

MFD BY DAIMLERCHRYSLER CORPORATION

DATE OF MFR 10-02

GVWR 2541 KG(05600 LB)

GAWR FRONT WITH TIRES
1248 KG(2750 LB) P215/75R16

RIMS AT
16X7

COLD
227 KPA(33 PSI)

GAWR REAR WITH TIRES
1429 KG(3150 LB) R215/75R16

RIMS AT
16X7

COLD
227 KPA(33 PSI)

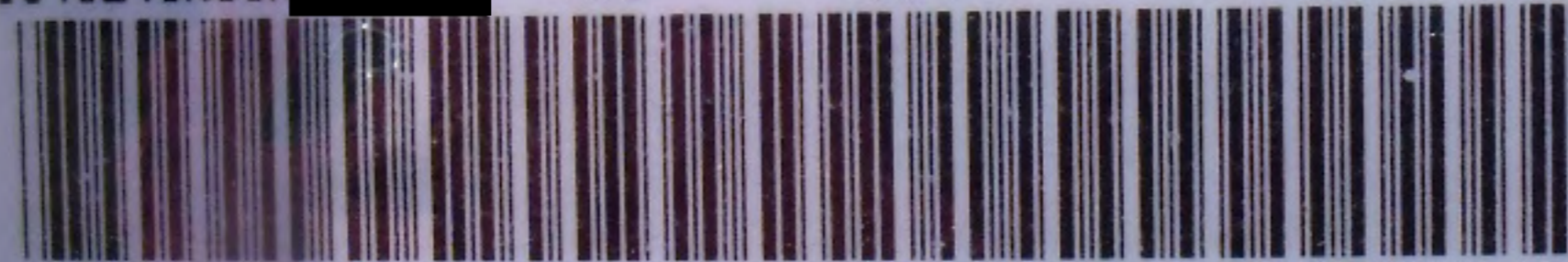
THIS VEHICLE CONFORMS TO ALL APPLICABLE FEDERAL MOTOR VEHICLE SAFETY AND THEFT PREVENTION STANDARDS IN EFFECT ON THE DATE OF MANUFACTURE SHOWN ABOVE.

VIN: 1J4GL48K83W

TYPE:

MPV

SINGLE X DUAL



MDH: 100218 776AB PNT:PS2

VEHICLE MADE IN U.S.A. TRM:M5DU 4648503





WARNING



DEATH OR SERIOUS INJURY CAN OCCUR

- CHILDREN 12 AND UNDER CAN BE KILLED BY THE AIR BAG
- THE BACK SEAT IS THE SAFEST PLACE FOR CHILDREN
- NEVER PUT A REAR-FACING CHILD SEAT IN THE FRONT
- SIT AS FAR BACK AS POSSIBLE FROM THE AIR BAG
- ALWAYS USE SEAT BELTS AND CHILD RESTRAINTS





MOPAR

89-957

324

10-12/10-12



LIBERTY sport

LAREDO



PROUD PARENT OF A
U.S. MARINE

Years of the Ford
Because of the B7C II

★
★
★

Jeep

4x4
DAVIES FORD
CHARLEROI PA

WARRIOR



PROUD PARENT OF A U.S. MARINE

I'm not a Hero. Because of the Brave.

Two blue stars in a pink and white border.

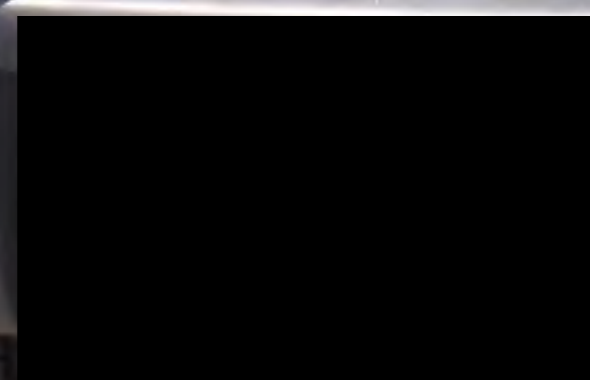
U.S. MARINE

Jeep

4x4

DAVIES FORD CHARLOTTE, PA

3.7L



NIE NHL



TOUGH COMES
IN ONE SHAPE.

3.7L

TOYOTA



324

LIBERTY

LAREDO





3

INCHES

11

1/2

1 1/8

1 1/4

1 1/2

1 3/4

1 7/8

2

2 1/8

2 1/4



25FT

4

3

2

FT & IN
INCHES







324
32A

















TD131











TD131









INSTALL
AND SERVICE

ape

ape
DC

SEARCH

SEEK

AM
FM

SET

L

R

BAL

FADER

F

R

BASS

TREB

DISC1

2

3

RND
4

1

2

3

4









LAST DAY OF
10 201
MONTH
STATION# KS
11607





TRANS
TEMP

door



EXPIRES LAST P
MONTH
TION#



TRANS
TEMP





Jeep
Stay With The Specialists
NORPP
WHEELS

Display

Vehicle Scan Tool

1.	3.7 & 4.7 JTEC+ 99
2.	TCM_45RFE_J1850
3.	* BCM_KJ
4.	* MIC_KJ
5.	RBK Audio

Page 1 of 1 BCM

Scanning 36 of 36

Exit

Keypad

F1	F2	F3	F4
Enter	UP	Enter	
Left		Right	
	Down		
DVOM	Yes	Page FWD	
Read Hold	No	Page Back	
1	2	3	
4	5	6	
7	8	9	
Shift	0	More	



CHRISLER
WARNING
IMPEDANCE
FALL SEAN
CHRISLER















MAC TOOLS

MAC TOOLS

MAC TOOLS















BC2692K0630
5211 79AB
0585

DO NOT USE ON 18" DIAMETER WHEELS
DANGER













FUEL
CAUTION
FUEL

DANGER / POISON
DO NOT OPEN IN HOT ENVIRONMENT
DO NOT OPEN IN HOT ENVIRONMENT
DO NOT OPEN IN HOT ENVIRONMENT

DO NOT OPEN IN HOT ENVIRONMENT
DO NOT OPEN IN HOT ENVIRONMENT
DO NOT OPEN IN HOT ENVIRONMENT

5X102A31

AUTOCRAFT

RELEASE LATCH
FOR ACCESS TO
FUSES AND RELAYS

Autocraft
12V 60Ah
550 CCA
550 CCA
550 CCA

1P7 56008951AK
1P7 56008951AK

BELT ROUTING



5300 960



ATTENTION

SEE THE SERVICE MANUAL FOR THE LOCATION OF THE SERVICE PORTS FOR THE AIR/FUEL METERING SYSTEM.

WARNING

DO NOT ATTEMPT TO SERVICER THE AIR/FUEL METERING SYSTEM UNLESS YOU ARE A QUALIFIED PERSONNEL ONLY.

5212 877648



DaimlerChrysler Corporation
IMPORTANT VEHICLE INFORMATION

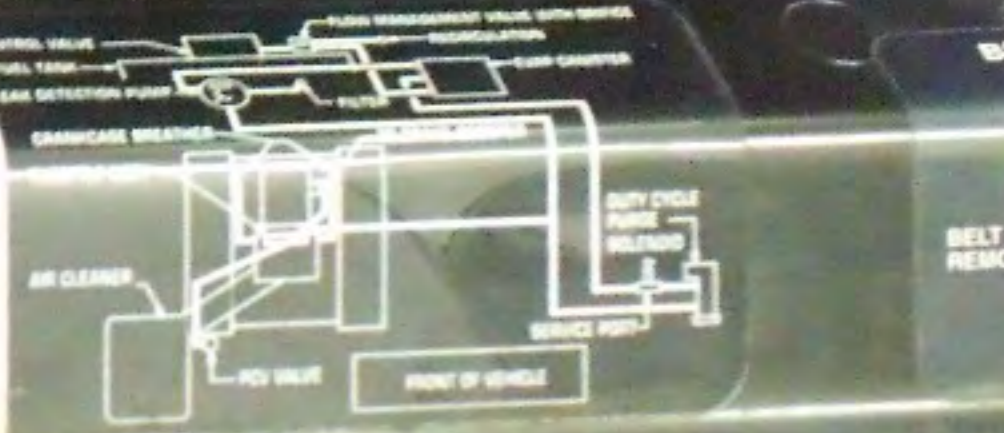
THIS VEHICLE IS EQUIPPED WITH A 2.7 LITER, 4-CYLINDER, DIESEL ENGINE. THE ENGINE IS A COMMON RAIL DIESEL ENGINE. THE ENGINE IS A COMMON RAIL DIESEL ENGINE. THE ENGINE IS A COMMON RAIL DIESEL ENGINE.

• BASIC IGNITION TIMING AND IDLE FUEL/AIR MIXTURE MUST BE ADJUSTED BY THE FACTORY. SEE THE SERVICE MANUAL FOR PROPER PROCEDURES AND OTHER ADDITIONAL INFORMATION.

• ADJUSTMENTS MADE BY OTHER THAN APPROVED SERVICE MANUAL PROCEDURES MAY VIOLATE FEDERAL AND STATE LAWS.

CAUTION: APPLY PARKING BRAKE WHEN SERVICING VEHICLE.

24005021 OR01	SPARK PLUGS 2Y80F-110
CERTIFIED 50% TWC, 21WUC	0.040 in. GAP
3.7 LITER	NO ADJUSTMENTS NEEDED
SCR103 7220	SCR103 15500H
CATALYST	



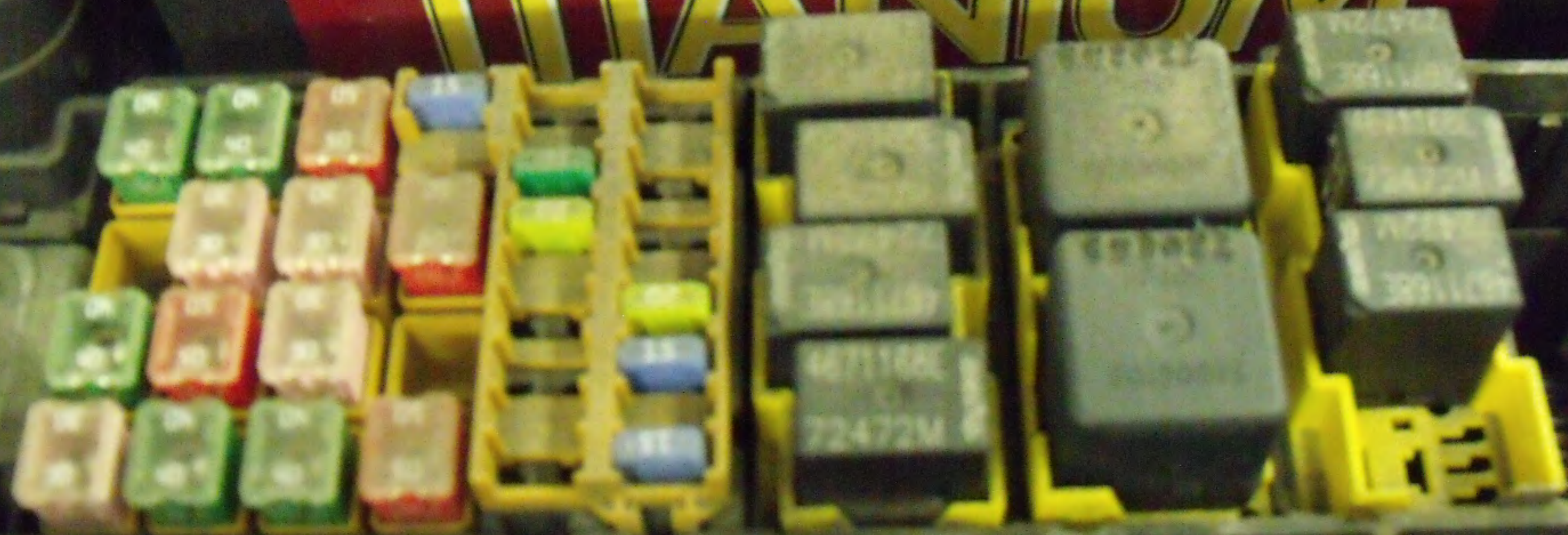
BELT REMOVE



31128498

AUTOCRAFT

TITANIUM





4671168F
72472M

Jeep
STICK WITH THE
KEY TAG 324
FLORIDA

WARNING



DEATH OR SERIOUS INJURY CAN OCCUR

- CHILDREN 12 AND UNDER CAN BE KILLED BY THE AIR BAG.
- THE **BACK SEAT** IS THE **SAFEST** PLACE FOR CHILDREN.
- **NEVER** PUT A REAR-FACING CHILD SEAT IN THE FRONT.
- SIT AS FAR BACK AS POSSIBLE FROM THE AIR BAG.
- **ALWAYS** USE **SEAT BELTS** AND **CHILD RESTRAINTS**.

WARNING



AVOID AB
AND EX
ALWAYS
SEE OWNER'S
FOR FURTHER INFOR