

Dismantlement and assessment of an R4 CR Bosch HP fuel pump 03L 130 755

Fig. name: 1618 2009 0011



Fig. 1:

Pump no. 1 Data plate

Fig. name: 1618 2009 0001

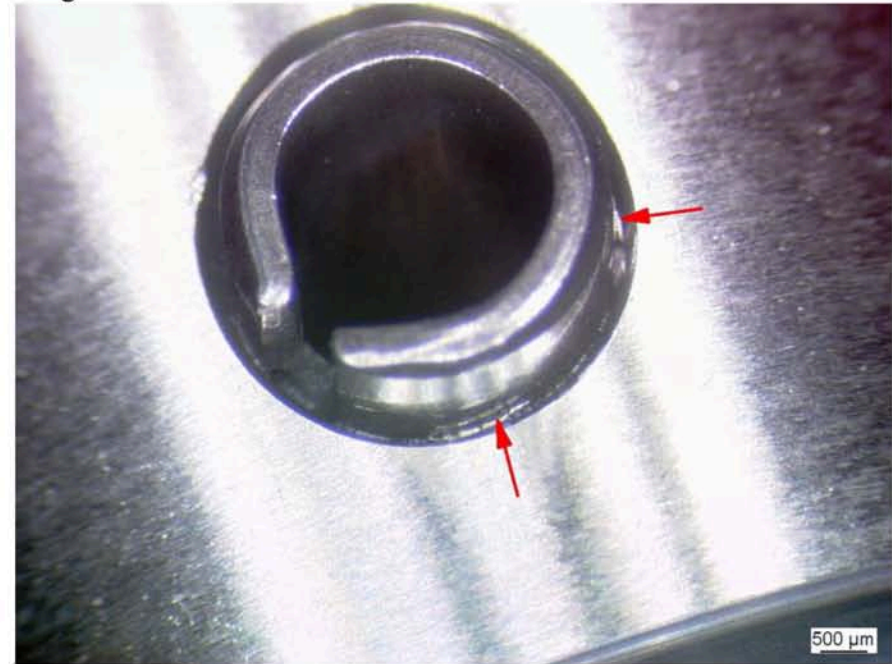
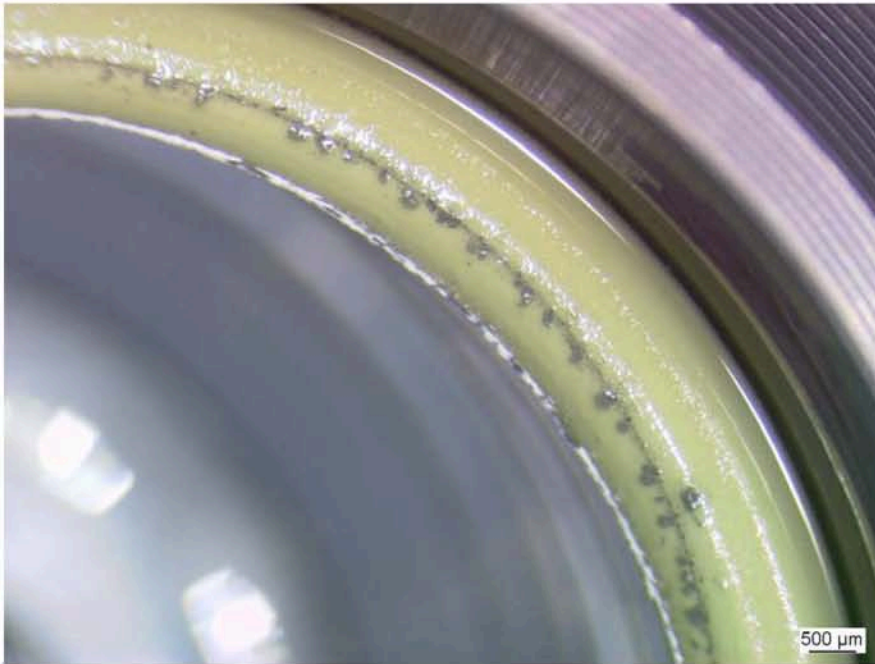


Fig. 2:

Pump no. 1 Extrusion from the pressing process No particles in thread

Dismantling and assessment of an R4 CR Bosch HP fuel pump 03L 130 755

Fig. name: 1618 2009 0003

**Fig. 3:**

Pump no. 1 O-ring CH abrasion from the locking ring coating, non-critical

Fig. name: 1618 2009 0004

**Fig. 4:**

Pump no. 1 External mantle, piston bore. Rust

Dismantling and assessment of an R4 CR Bosch HP fuel pump 03L 130 755

Fig. name: 1618 2009 0005

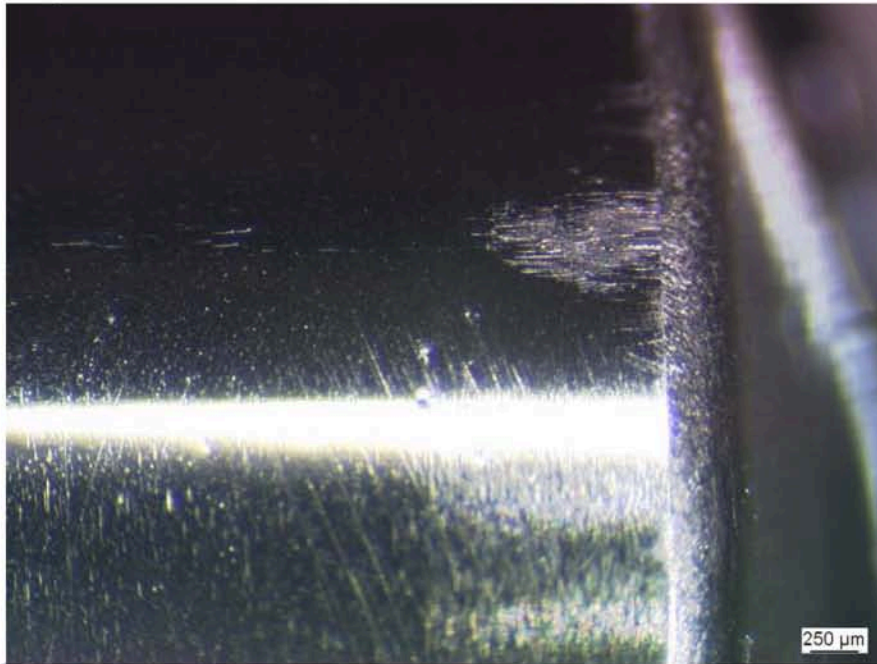


Fig. 5:

Pump no. 1 Roller, minor cracks on edge

Fig. name: 1618 2009 0006

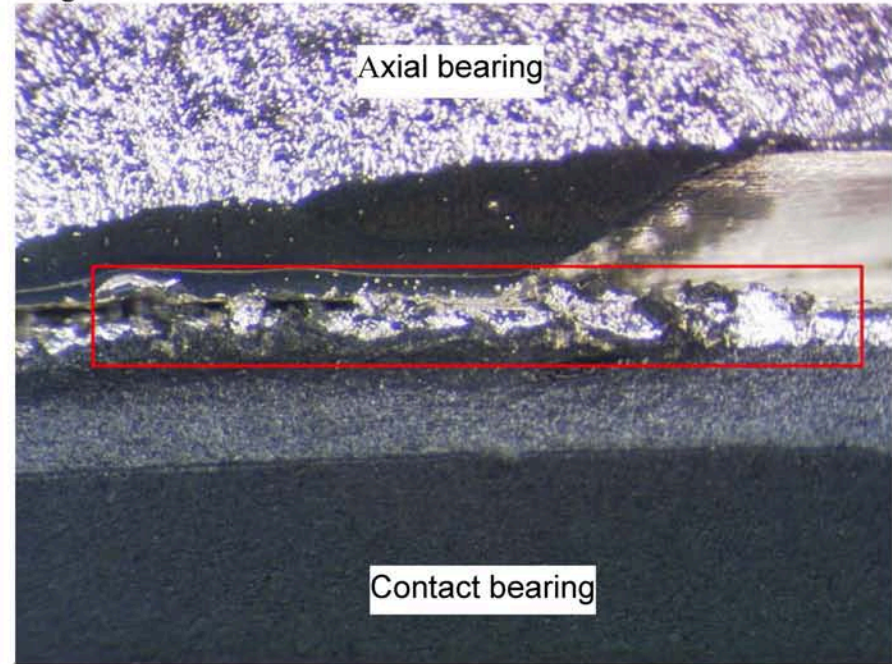
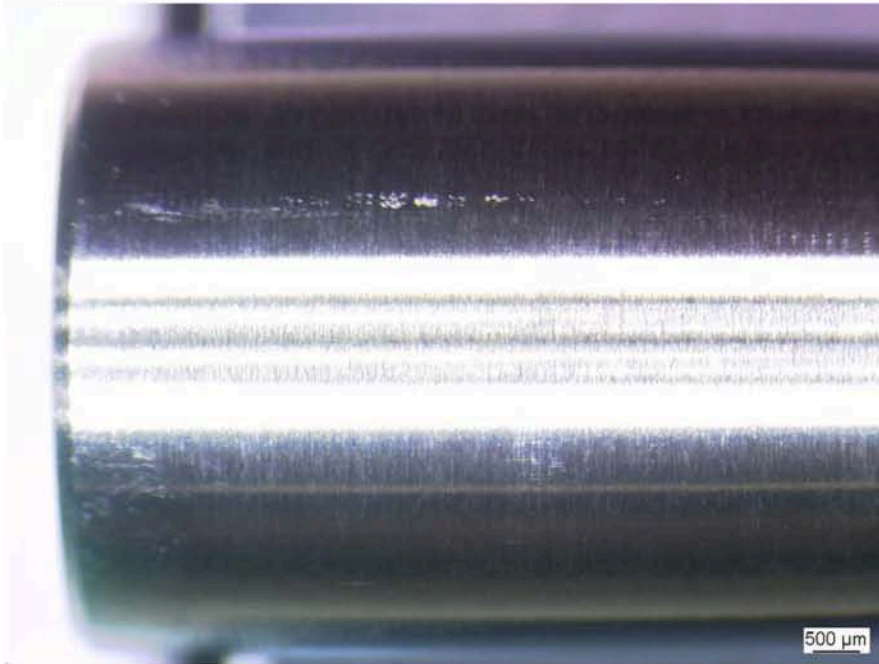


Fig. 6:

Pump no. 1 Space between compensating disk, contact bearing flange

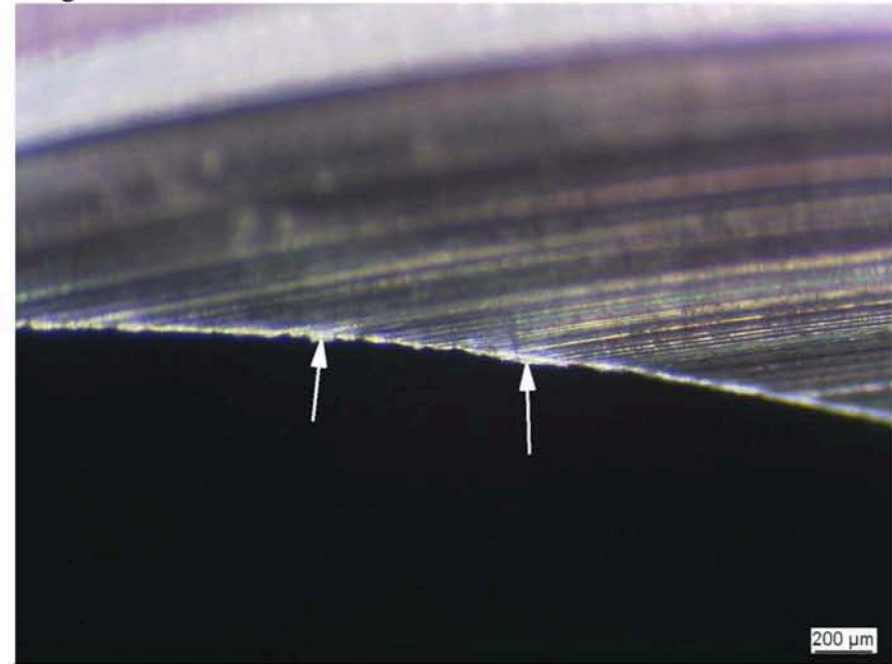
Dismantling and assessment of an R4 CR Bosch HP fuel pump 03L 130 755

Fig. name: 1618 2009 0007

**Fig. 7:**

Pump no. 1 Very slight traces on piston

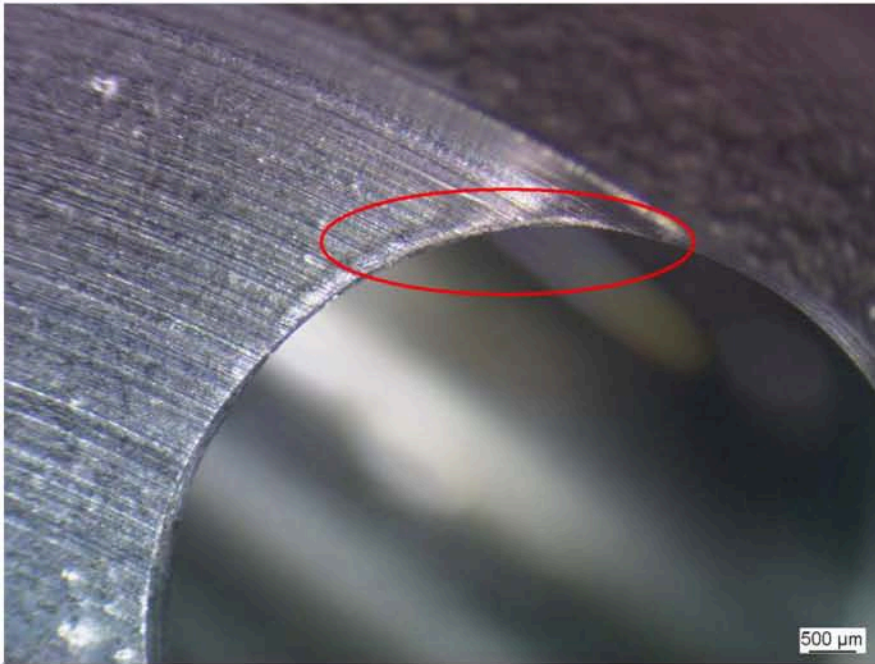
Fig. name: 1618 2009 0008

**Fig. 8:**

Pump no. 1 Tappet bore bottom edge, very small burr (sharp edge)

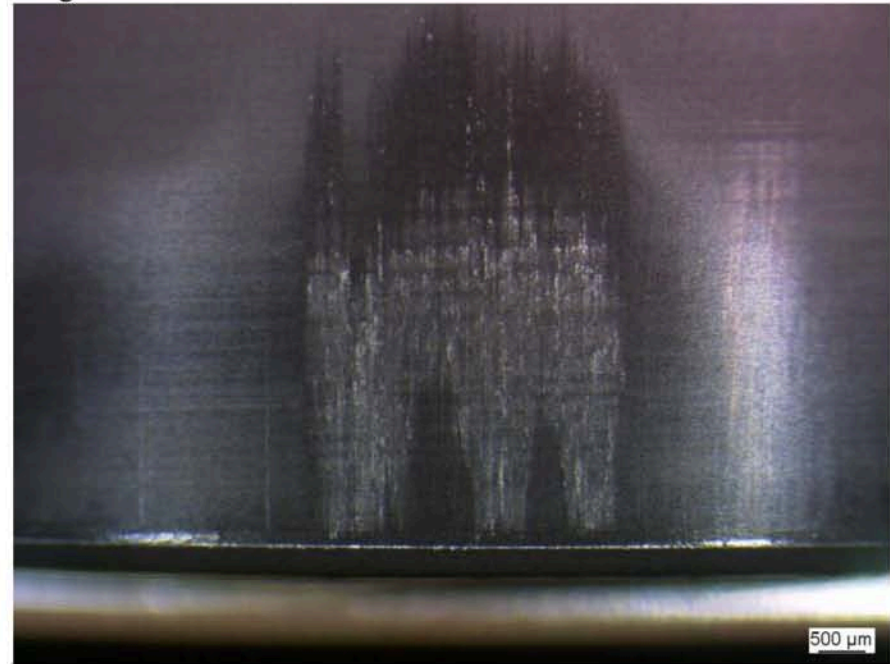
Dismantling and assessment of an R4 CR Bosch HP fuel pump 03L 130 755

Fig. name: 1618 2009 0009

**Fig. 9:**

Pump no. 1 Cross bore inlet edge to interior, burr (sharp edge)

Fig. name: 1618 2009 0010

**Fig. 10:**

Pump no. 1 Tappet body run marks