

**20050414Y00060**

TQCN DOC# <b>PR-16050-1025</b>	Affiliate TMS	Dept. QA-Powertrain	Source MDT/DS	Dealer Code 16050	Ref 26524-1	Date 4/13/2005
Dealer Name KERRY TOYOTA		Dealer City FLORENCE		State KY	Region CIN	
Primary Model CorollaNUMMI	Model Year 2005	Production Date 22-DEC-04	Odometer 7909 mi		VIN 1NXBR32E55Z [REDACTED]	
Condition Title '05 Corolla "No Start" ECM Failure						

Repair Date 12-APR-2005	Optional Ref.	Applicable DTC Code(s)
----------------------------	---------------	------------------------

**Condition Description**

Vehicle towed into dealership with a crank, not start condition. Technician confirmed engine would not start and MIL does not illuminate.

**Diagnostic Steps:**

The scan tool would not communicate with the ECM. Power and ground connections to the ECM were confirmed good.

**Probable Cause**

ECM fault

Part # 1: 8966102C12	Part # 2:	Part # 3:	Parts Available on Request: Available upon request	Parts Shipping Destination: CQEC
-------------------------	-----------	-----------	---	-------------------------------------

**Repair Process**

Replaced engine control module to restore engine operation.

TQCN DOC# <b>PR-16050-1025</b>	Affiliate TMS	Dept. QA-Powertrain	Source MDT/DS	Dealer Code 16050	Ref 26524-1	Date 4/13/2005
Dealer Name KERRY TOYOTA		Dealer City FLORENCE		State KY	Region CIN	
Primary Model CorollaNUMMI	Model Year 2005	Production Date 22-DEC-04	Odometer 7909 mi	VIN 1NXBR32E55Z [REDACTED]		
Condition Title '05 Corolla "No Start" ECM Failure						

Attachment 1: **Parts Recovery Control Sheet**

Do not type in SHADED fields. If the **Final Destination** field below is "scrap", properly dispose of the part.

Orig Tracking  
VIN [REDACTED]  
Doc No. [REDACTED]



<b>Final Destination:</b> CQEC	SETR#:	CQE Eng:	N/A	
<b>Importer: (Applies to TMC Shipments Only)</b>	Deliver to:	住所:		
North America EDER Gr., Technical Dept. #1 Overseas Customer Service Technical Div. TOYOTA MOTOR CORPORATION Nisshin Education & Training Center 5-210, SAKAE, NISSHIN, AICH, 470-0113 Japan	Attn:	宛先:		
	Tel:	Tel:		
T-STAR	[Barcode]	[Barcode]		
Note: If this FTR contains more than one VIN, create a table in the report containing VIN, production date, and odometer			FOR CUSTOMS USE: Used Parts Value	
<b>1</b>	<b>Part # 1:</b> 8966102C12	<b>Part Description</b> COMPUTER, ENGINE CONTROL	<b>Qty.</b> 1	<b>Used Part Value</b> \$ 184 .00
	Comments:			
<b>2</b>	<b>Part # 2:</b>	<b>Part Description</b>	<b>Qty.</b> 0	<b>Used Part Value</b> \$ 0 .00
	Comments:			
<b>3</b>	<b>Part # 3:</b>	<b>Part Description</b>	<b>Qty.</b> 0	<b>Used Part Value</b> \$ 0 .00
	Comments:			
<b>4</b>	<b>Part # 4:</b>	<b>Part Description</b>	<b>Qty.</b>	<b>Used Part Value</b> \$ .00
	Comments:			
<b>5</b>	<b>Part # 5:</b>	<b>Part Description</b>	<b>Qty.</b>	<b>Used Part Value</b> \$ .00
	Comments:			
<b>6</b>	<b>Part # 6:</b>	<b>Part Description</b>	<b>Qty.</b>	<b>Used Part Value</b> \$ .00
	Comments:			
<b>7</b>	<b>Part # 7:</b>	<b>Part Description</b>	<b>Qty.</b>	<b>Used Part Value</b> \$ .00
	Comments:			

**20050503K00080**

TQCN DOC# <b>FTR-VFE412051</b>	Affiliate TMS	Dept. QA-Powertrain	Source FPE	Location TMS-CIN	Ref 26918-1	Date 5/2/2005
Problem Area Base Vehicle	Primary Model CorollaNUMMI	Model Year 2005	Production Date 10-Nov-2004	Odometer 2144 mi	VIN (confirm 17 characters): 1NXBR32E85Z [REDACTED]	
Condition Title MIL "ON" Code P0010, ENGINE STALL - VVTI VALVE STICKING						

Do not type in YELLOW shaded fields - Input data from Web page or RDM:

Repair Date 31-MAR-2005	Optional Ref.	Optional Approval
----------------------------	---------------	-------------------

Condition Description

- Customer complained that vehicle will start and run for a few seconds (5) and stall immediately.
- Vehicle will restart but will then stall again.

Diagnostic Steps:

- DTC codes checked.
- P0010 (Camshaft position "A" actuator circuit malfunction) fault code stored in memory

Probable Cause

- Probable root cause of complaint condition appears to be sticking VVTI oil control valve assembly.

Part # 1: 1533022030	Part # 2:	Part # 3:	Parts Disposition: Have part / will ship	Parts Shipping Destination: 2111
-------------------------	-----------	-----------	---	-------------------------------------

Repair Process

- Replacement of VVTI oil control valve corrected complaint condition and customer is satisfied with repairs.



- Oil control valve sticking.

Attachment 1: PRCS

TQCN DOC# <b>FTR-VFE412051</b>		Affiliate TMS	Dept. QA-Powertrain	Source FPE	Location TMS-CIN	Ref 26918-1	Date 5/2/2005
Problem Area Base Vehicle	Primary Model CorollaNUMMI	Model Year 2005	Production Date 10-Nov-2004	Odometer 2144 mi	VIN (confirm 17 characters): 1NXBR32E85Z [REDACTED]		
Condition Title MIL "ON" Code P0010, ENGINE STALL - VVTI VALVE STICKING							

Attachment 1: **Parts Recovery Control Sheet**

Do not type in SHADED fields. If the **Final Destination** field below is "scrap", properly dispose of the part.

Orig Tracking

VIN

Doc No.



<b>Final Destination:</b> 2111		SETR#:	CQE Eng:	N/A
<b>Importer: (Applies to TMC Shipments Only)</b>		Deliver to:		住所:
North America EDER Gr., Technical Dept. #1 Overseas Customer Service Technical Div. TOYOTA MOTOR CORPORTATION Nisshin Education & Training Center 5-210, SAKAE, NISSHIN, AICH, 470-0113 Japan		Attn:		宛先:
		Tel:		Tel:
T-STAR				
Note: If this FTR contains more than one VIN, create a table in the report containing VIN, production date, and odometer				FOR CUSTOMS USE: Used Parts Value
1	Part # 1:	Part Description	Qty.	Used Part Value
	1533022030	VALVE ASSY, CAM TIMING OIL CONTROL	1	\$ 11 .00
Comments:				
2	Part # 2:	Part Description	Qty.	Used Part Value
			0	\$ 0 .00
Comments:				
3	Part # 3:	Part Description	Qty.	Used Part Value
			0	\$ 0 .00
Comments:				
4	Part # 4:	Part Description	Qty.	Used Part Value
				\$ .00
Comments:				
5	Part # 5:	Part Description	Qty.	Used Part Value
				\$ .00
Comments:				
6	Part # 6:	Part Description	Qty.	Used Part Value
				\$ .00
Comments:				
7	Part # 7:	Part Description	Qty.	Used Part Value
				\$ .00
Comments:				
8	Part # 8:	Part Description	Qty.	Used Part Value
				\$ .00
Comments:				

**20050706Y00050**

TQCN DOC# <b>FTR-5BE418551</b>		Affiliate TMS	Dept. QA-Powertrain	Source FTS	Location TMS-SF	Ref 27931-1	Date 7/5/2005
Problem Area Base Vehicle	Primary Model CorollaNUMMI	Model Year 2005	Production Date 07-Sep-2004	Odometer 6714 mi	VIN (confirm 17 charac 1NXBR32EX5Z [REDACTED])		
Condition Title Engine Stalled While Driving.							

**Do not type in YELLOW shaded fields - Input data from Web page or RDM:**

Repair Date <b>06-JUN-2005</b>	Optional Ref.	Optional Approval
-----------------------------------	---------------	-------------------

**Condition Description**

The engine stopped running while driving. The engine could not be restarted. The fuel line located ahead of the left-rear wheel was reconnected. The vehicle was then driven to a dealership.

**Diagnostic Steps:**

The engine started and ran normally at the time of the inspection. The fuel connection and lines located ahead of the left-rear wheel were inspected with no problems found. The connection was tested using the push-pull method several times, and the connection checked okay for proper locking.

**Probable Cause**

Unknown.

Part # 1: 7720912180	Part # 2:	Part # 3:	Parts Disposition: No part available	Parts Shipping Destination: N/A
-------------------------	-----------	-----------	---	------------------------------------

**Repair Process**

None.



Fuel line connection located ahead of the left-rear wheel.

Attachment 1: PRCS



TQCN DOC# <b>FTR-5BE418551</b>	Affiliate TMS	Dept. QA-Powertrain	Source FTS	Location TMS-SF	Ref 27931-1	Date 7/5/2005
Problem Area Base Vehicle	Primary Model CorollaNUMMI	Model Year 2005	Production Date 07-Sep-2004	Odometer 6714 mi	VIN (confirm 17 characters): 1NXBR32EX5Z [REDACTED]	
Condition Title Engine Stalled While Driving.						

Attachment 1: **Parts Recovery Control Sheet**

Orig Tracking

VIN

Doc No.



Do not type in SHADED fields. If the **Final Destination** field below is "scrap", properly dispose of the part.

<b>Final Destination:</b> N/A	SETR#:	CQE Eng:	N/A
<b>Importer: (Applies to TMC Shipments Only)</b>	Deliver to:	住所 :	
Mr. N. Okumura, Chief Expert Quality Div. Warranty Parts Room TOYOTA MOTOR CORPORATION 1 Toyota, Toyota-city, Aichi, 471-8571 Japan	Attn:	宛先 :	
	Tel:	Tel:	

T-STAR		
--------	--	--

Note: If this FTR contains more than one VIN, create a table in the report containing VIN, production date, and odometer

FOR CUSTOMS USE:  
Used Parts Value

	Part # 1:	Part Description	Qty.	Used Part Value
1	7720912180	TUBE SUB-ASSY, FUEL TANK MAIN	0	\$ 2.00
	Comments:			
2	Part # 2:	Part Description	Qty.	Used Part Value
			0	\$ 0.00
	Comments:			
3	Part # 3:	Part Description	Qty.	Used Part Value
			0	\$ 0.00
	Comments:			
4	Part # 4:	Part Description	Qty.	Used Part Value
				\$ .00
	Comments:			
5	Part # 5:	Part Description	Qty.	Used Part Value
				\$ .00
	Comments:			
6	Part # 6:	Part Description	Qty.	Used Part Value
				\$ .00
	Comments:			
7	Part # 7:	Part Description	Qty.	Used Part Value
				\$ .00
	Comments:			
8	Part # 8:	Part Description	Qty.	Used Part Value
				\$ .00
	Comments:			

**20051021Y00060**

TQCN DOC# <b>FTR-VQE424151</b>	Affiliate TMS	Dept. QA-Powertrain	Source FPE	Location TMS-LA	Ref 29639-1	Date 10/20/2005
Problem Area Base Vehicle	Primary Model CorollaNUMMI	Model Year 2005	Production Date 25-Jun-2005	Odometer 11 mi	VIN (confirm 17 characters): 1NXBR32E95Z [REDACTED]	
Condition Title Intermittent Stalling Condition: MIL "ON" Multiple DTCs						

Do not type in YELLOW shaded fields - Input data from Web page or RDM:

Repair Date 18-AUG-2005	Optional Ref.	Optional Approval
----------------------------	---------------	-------------------

Condition Description

Customer complaint of engine intermittently stalling. MIL light turns "ON" at times.

Diagnostic Steps:

Technician found condition could be duplicated while driving car.

- Various (random) codes occurred which are related to sensor signals.
- Condition could be duplicated in service stall by wiggling main engine wire harness, near back of head.

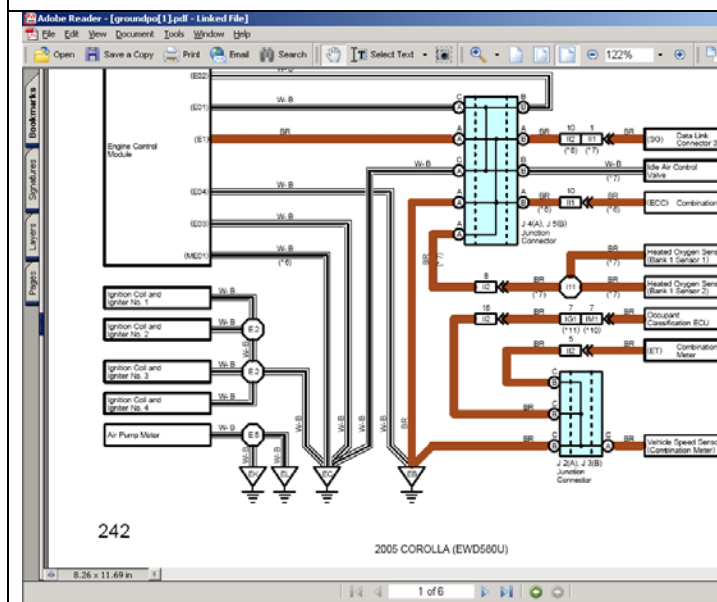
Probable Cause

Retaining bolt at ECM ground (EB) was loose (not tightened into cylinder head. Bolt was 4-5 mm out (from fully seated position).

Part # 1: N/A	Part # 2:	Part # 3:	Parts Disposition: No part available	Parts Shipping Destination: N/A
------------------	-----------	-----------	---	------------------------------------

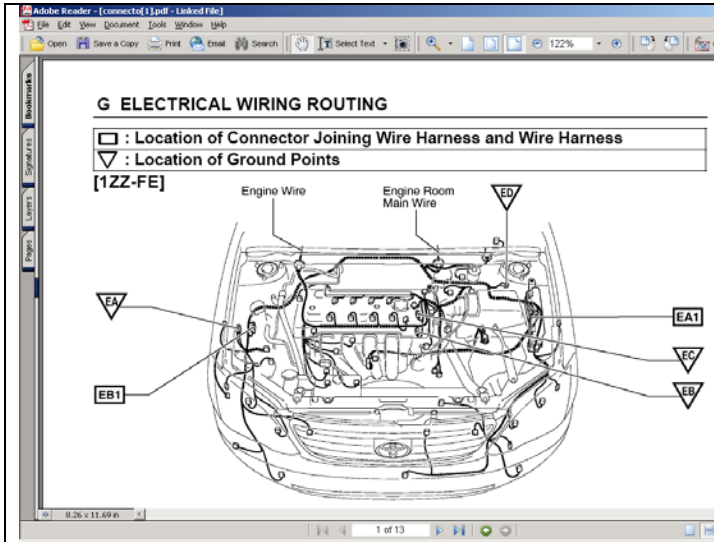
Repair Process

Tightening bolt at EB ground point corrected complaint condition.



EB terminal provides ground for ECM signals.

TQCN DOC# <b>FTR-VQE424151</b>		Affiliate TMS	Dept. QA-Powertrain	Source FPE	Location TMS-LA	Ref 29639-1	Date 10/20/2005
Problem Area Base Vehicle	Primary Model CorollaNUMMI	Model Year 2005	Production Date 25-Jun-2005	Odometer 11 mi	VIN (confirm 17 characters): 1NXBR32E95Z [REDACTED]		
Condition Title Intermittent Stalling Condition: MIL "ON" Multiple DTCs							



EB ground located on cylinder head.

Attachment 1: PRCS

TQCN DOC# <b>FTR-VQE424151</b>		Affiliate TMS	Dept. QA-Powertrain	Source FPE	Location TMS-LA	Ref 29639-1	Date 10/20/2005
Problem Area Base Vehicle	Primary Model CorollaNUMMI	Model Year 2005	Production Date 25-Jun-2005	Odometer 11 mi	VIN (confirm 17 characters): 1NXBR32E95Z [REDACTED]		
Condition Title Intermittent Stalling Condition: MIL "ON" Multiple DTCs							

Attachment 1: **Parts Recovery Control Sheet**

Orig Tracking

VIN

Doc No.



Do not type in SHADED fields. If the **Final Destination** field below is "scrap", properly dispose of the part.

<b>Final Destination:</b> N/A		SETR#:	CQE Eng:	N/A
<b>Importer: (Applies to TMC Shipments Only)</b>		Deliver to:		住所:
North America EDER Gr., Technical Dept. #1 Overseas Customer Service Technical Div. TOYOTA MOTOR CORPORATION Nisshin Education & Training Center 5-210, SAKAE, NISSHIN, AICH, 470-0113 Japan		Attn:		宛先:
		Tel:		Tel:
T-STAR				
Note: If this FTR contains more than one VIN, create a table in the report containing VIN, production date, and odometer				FOR CUSTOMS USE: Used Parts Value
1	Part # 1:	Part Description	Qty.	Used Part Value
	N/A		0	\$ 0.00
Comments:				
2	Part # 2:	Part Description	Qty.	Used Part Value
			0	\$ 0.00
Comments:				
3	Part # 3:	Part Description	Qty.	Used Part Value
			0	\$ 0.00
Comments:				
4	Part # 4:	Part Description	Qty.	Used Part Value
				\$ .00
Comments:				
5	Part # 5:	Part Description	Qty.	Used Part Value
				\$ .00
Comments:				
6	Part # 6:	Part Description	Qty.	Used Part Value
				\$ .00
Comments:				
7	Part # 7:	Part Description	Qty.	Used Part Value
				\$ .00
Comments:				
8	Part # 8:	Part Description	Qty.	Used Part Value
				\$ .00
Comments:				

**20051210I00110**

TQCN DOC# <b>FTR-VQE433951</b>		Affiliate TMS	Dept. QA-Powertrain	Source FPE	Location TMS-LA	Ref 29261-1	Date 12/9/2005
Problem Area Base Vehicle	Primary Model CorollaNUMMI	Model Year 2006	Production Date 31-Oct-2005	Odometer 429 mi	VIN (confirm 17 characters): 1NXBR30E86Z [REDACTED]		
Condition Title 06 Corolla: ENGINE STALLED - ECM INOPERATIVE							

Do not type in YELLOW shaded fields - Input data from Web page or RDM:

Repair Date 19-NOV-2005	Optional Ref.	Optional Approval
----------------------------	---------------	-------------------

Condition Description

Engine started then stalled.

- After restarting, engine stalled at a stop-sign.
- Engine would not restart; car towed to dealer for repair.

Diagnostic Steps:

Scantool connected for testing; NO COMMUNICATION occurred. No further diagnosis was available.

Probable Cause

Internal condition in ECM.

Part # 1: 8966102D01	Part # 2:	Part # 3:	Parts Disposition: Have part / will ship	Parts Shipping Destination: CQEC
-------------------------	-----------	-----------	---	-------------------------------------

Repair Process

New ECM corrected complaint condition.



Note: Small print under lower bar code reads – 869800M252935YR7

Attachment 1: PRCS

TQCN DOC# <b>FTR-VQE433951</b>	Affiliate TMS	Dept. QA-Powertrain	Source FPE	Location TMS-LA	Ref 29261-1	Date 12/9/2005
Problem Area Base Vehicle	Primary Model CorollaNUMMI	Model Year 2006	Production Date 31-Oct-2005	Odometer 429 mi	VIN (confirm 17 characters): 1NXBR30E86Z [REDACTED]	
Condition Title 06 Corolla: ENGINE STALLED - ECM INOPERATIVE						

Attachment 1: **Parts Recovery Control Sheet**

Orig Tracking

VIN

Doc No.



Do not type in SHADED fields. If the **Final Destination** field below is "scrap", properly dispose of the part.

<b>Final Destination:</b> CQEC	SETR#:	CQE Eng:	N/A
<b>Importer: (Applies to TMC Shipments Only)</b>	Deliver to:	住所 :	
North America EDER Gr., Technical Dept. #1 Overseas Customer Service Technical Div. TOYOTA MOTOR CORPORATION Nisshin Education & Training Center 5-210, SAKAE, NISSHIN, AICH, 470-0113 Japan	Attn:	宛先 :	
	Tel:	Tel:	

T-STAR		
--------	--	--

Note: If this FTR contains more than one VIN, create a table in the report containing VIN, production date, and odometer

FOR CUSTOMS USE:  
Used Parts Value

	Part # 1:	Part Description	Qty.	Used Part Value
1	8966102D01	COMPUTER, ENGINE CONTROL	1	\$ 98 .00
	Comments:			
2	Part # 2:	Part Description	Qty.	Used Part Value
			0	\$ 0 .00
	Comments:			
3	Part # 3:	Part Description	Qty.	Used Part Value
			0	\$ 0 .00
	Comments:			
4	Part # 4:	Part Description	Qty.	Used Part Value
				\$ .00
	Comments:			
5	Part # 5:	Part Description	Qty.	Used Part Value
				\$ .00
	Comments:			
6	Part # 6:	Part Description	Qty.	Used Part Value
				\$ .00
	Comments:			
7	Part # 7:	Part Description	Qty.	Used Part Value
				\$ .00
	Comments:			
8	Part # 8:	Part Description	Qty.	Used Part Value
				\$ .00
	Comments:			



**20060725A00070**

## FIELD TECHNICAL REPORT

**MICROL CORPORATION**

<b>FTR No.</b> MC06-06	<b>Country</b> Saipan	<b>Created by</b> Abner Venus	<b>Issue Date</b> 4/3/06
<b>Model Name</b> COROLLA-TMC	<b>Model Code</b> ZZE130L-AEPNKA	<b>Year Model</b> 2006	
<b>Priority</b> <input type="checkbox"/> A <input checked="" type="checkbox"/> B <input type="checkbox"/> C	<b>Engine No.</b> 1ZZ-2359204	<b>Mileage</b> 2,070	<b>Production</b> 8/1/05
<b>Component Code</b> D71	<b>Component</b> E/G Elec. E/G Control ECU - Computer (EFI)		

<b>VIN</b>	JTDBR32E460 [REDACTED]	<b>Delivery Date</b>	2/16/06
		<b>Repair Date</b>	3/27/06

Original Parts Failed No. 89661-02D01  
 Status of original failed parts Stored  
 Correction Parts No. 89661-02D01  
 Number of Cases 1  
 Main Responsibility TMC

**Subject**  
Vehicle Stalls intermittently.

**Introduction**  
 Customer mentioned that his vehicle stalls intermittently.  
 We confirmed this problem took some time to correct as it was hard to duplicate.  
 It happen while driving and also when idling. After stalling it would start up again and run fine.  
 Then it will run fine for several days before stalling again.

**Symptom / Condition**  
 Complete inspection of entire fuel and ignition systems passed. No DTCs stored or pending.

**Correction**  
 Replaced ECU. (Part # 89661-02D01)

**Probable Cause**  
 Possible material failure or programming error in ECU.

**Result**  
 Vehicle has not stalled since repaired.

**Comments**

**Other Affected Vehicles (Model Code, VIN/Frame No., km)**  
 We think this is an isolated case. When we receive an additional case, we will issue other FTR.

**Request**

Please take appropriate action in the notification of the part involved in the assembly and quality control of this item to avoid concerns such as this.

**Attachment (Illustration, Photo, Chart, etc.)**

**20070308Y00050**

TQCN DOC# <b>FTR-JLE406671</b>		Affiliate TMS	Dept. QA-Powertrain	Source FTS	Location TMS-CHI	Ref 35469-1	Date 3/7/2007
Problem Area Base Vehicle	Primary Model CorollaNUMMI	Model Year 2007	Production Date 04-Aug-2006	Odometer 10362 mi	VIN (confirm 17 characters): 1NXBR32E97Z [REDACTED]		
Condition Title 1ZZ-FE Engine Stalled - DTC P0607							

Do not type in YELLOW shaded fields - Input data from Web page or RDM:

Repair Date <b>02-MAR-2007</b>	Optional Ref.	Optional Approval
-----------------------------------	---------------	-------------------

Condition Description

- The customer stated that the engine stalled at a stop.
- The engine was then very difficult to restart.
- The engine did restart, but the vehicle would not go over 30 mph.
- The MIL (check engine light) was also illuminated.

Diagnostic Steps:

- The engine stalled in the service drive of the dealer.
- And the engine would then not restart.
- DTC P0607 was stored in the ECM, indicating an internal abnormality in the ECM.

Probable Cause

- The cause of the condition is unknown.

Part # 1: 8966102K20	Part # 2:	Part # 3:	Parts Disposition: Have part / will ship	Parts Shipping Destination: CQEC
-------------------------	-----------	-----------	---	-------------------------------------

Repair Process

- A new ECM (89661-0K020) was ordered and installed.
- Normal engine operation was restored.



Attachment 1: PRCS

TQCN DOC# <b>FTR-JLE406671</b>	Affiliate TMS	Dept. QA-Powertrain	Source FTS	Location TMS-CHI	Ref 35469-1	Date 3/7/2007
Problem Area Base Vehicle	Primary Model CorollaNUMMI	Model Year 2007	Production Date 04-Aug-2006	Odometer 10362 mi	VIN (confirm 17 characters): 1NXBR32E97Z [REDACTED]	
Condition Title 1ZZ-FE Engine Stalled - DTC P0607						

Attachment 1: **Parts Recovery Control Sheet**

Do not type in SHADED fields. If the **Final Destination** field below is "scrap", properly dispose of the part.

Orig Tracking

VIN

Doc No.



<b>Final Destination:</b> CQEC	SETR#:	CQE Eng:	N/A
<b>Importer: (Applies to TMC Shipments Only)</b>	Deliver to:	住所 :	
Mr. N. Okumura, Chief Expert Quality Div. Warranty Parts Room TOYOTA MOTOR CORPORATION 1 Toyota, Toyota-city, Aichi, 471-8571 Japan	Attn:	宛先 :	
	Tel:	Tel:	

T-STAR		
--------	--	--

Note: If this FTR contains more than one VIN, create a table in the report containing VIN, production date, and odometer

FOR CUSTOMS USE:  
Used Parts Value

	Part # 1:	Part Description	Qty.	Used Part Value
1	8966102K20	COMPUTER, ENGINE CONTROL	1	\$ 114 .00
	Comments:			
2	Part # 2:	Part Description	Qty.	Used Part Value
			0	\$ 0 .00
	Comments:			
3	Part # 3:	Part Description	Qty.	Used Part Value
			0	\$ 0 .00
	Comments:			
4	Part # 4:	Part Description	Qty.	Used Part Value
				\$ .00
	Comments:			
5	Part # 5:	Part Description	Qty.	Used Part Value
				\$ .00
	Comments:			
6	Part # 6:	Part Description	Qty.	Used Part Value
				\$ .00
	Comments:			
7	Part # 7:	Part Description	Qty.	Used Part Value
				\$ .00
	Comments:			
8	Part # 8:	Part Description	Qty.	Used Part Value
				\$ .00
	Comments:			

**20070405G00040**

TQCN DOC# <b>FTR-VEE109371</b>	Affiliate TMS	Dept. QA-Powertrain	Source FPE	Location TMS-NY	Ref 29818-1	Date 4/4/2007
Problem Area Base Vehicle	Primary Model Corolla	Model Year 2005	Production Date 26-Oct-2004	Odometer 22819 mi	VIN (confirm 17 characters): 2T1BR32E85C [REDACTED]	
Condition Title ECU failure						

Do not type in YELLOW shaded fields - Input data from Web page or RDM:

Repair Date 17-MAR-2007	Optional Ref.	Optional Approval
----------------------------	---------------	-------------------

Condition Description

Customer states vehicle dies while driving down the road.

Diagnostic Steps:

Technician verified the customer's complaint and upon further diagnosis found the vehicle dies while driving. Vehicle restarts with no codes.

- Vehicle was in for repair the day before and had the engine ECU replaced for p2716, TSB TC014-06.
- Technician replaced engine ECU #89661-02k20 with new engine ECU #89661-02k20 to remedy the problem.

Probable Cause

Unknown

Part # 1: 8966102K20	Part # 2:	Part # 3:	Parts Disposition: Have part / will ship	Parts Shipping Destination: CQEC
-------------------------	-----------	-----------	---	-------------------------------------

Repair Process

The technician replaced the engine ECU to remedy the condition.  
Part was shipped UPS for quality evaluation purposes to TMS  
UPS tracking # 1z4x415x0630345960

28069594

89661-02k20



Attachment 1: PRCS



TQCN DOC# <b>FTR-VEE109371</b>	Affiliate TMS	Dept. QA-Powertrain	Source FPE	Location TMS-NY	Ref 29818-1	Date 4/4/2007
Problem Area Base Vehicle	Primary Model Corolla	Model Year 2005	Production Date 26-Oct-2004	Odometer 22819 mi	VIN (confirm 17 characters): 2T1BR32E85C [REDACTED]	
Condition Title ECU failure						

Attachment 1: **Parts Recovery Control Sheet**

Orig Tracking

VIN

Doc No.



Do not type in SHADED fields. If the **Final Destination** field below is "scrap", properly dispose of the part.

<b>Final Destination:</b> CQEC		SETR#:	CQE Eng:	N/A
<b>Importer: (Applies to TMC Shipments Only)</b>		Deliver to:	住所 :	
Mr. N. Okumura, Chief Expert Quality Div. Warranty Parts Room TOYOTA MOTOR CORPORATION 1 Toyota, Toyota-city, Aichi, 471-8571 Japan		Attn:	宛先 :	
		Tel:	Tel:	
T-STAR		[Barcode]		[Barcode]
Note: If this FTR contains more than one VIN, create a table in the report containing VIN, production date, and odometer				FOR CUSTOMS USE: Used Parts Value
1	Part # 1:	Part Description	Qty.	Used Part Value
	8966102K20	COMPUTER, ENGINE CONTROL	1	\$ 114 .00
Comments:				
2	Part # 2:	Part Description	Qty.	Used Part Value
			0	\$ 0 .00
Comments:				
3	Part # 3:	Part Description	Qty.	Used Part Value
			0	\$ 0 .00
Comments:				
4	Part # 4:	Part Description	Qty.	Used Part Value
				\$ .00
Comments:				
5	Part # 5:	Part Description	Qty.	Used Part Value
				\$ .00
Comments:				
6	Part # 6:	Part Description	Qty.	Used Part Value
				\$ .00
Comments:				
7	Part # 7:	Part Description	Qty.	Used Part Value
				\$ .00
Comments:				
8	Part # 8:	Part Description	Qty.	Used Part Value
				\$ .00
Comments:				

**20070612K00060**

FIELD TECHNICAL REPORT



TQCN DOC# <b>FTR-JOE314971</b>	Affiliate TMS	Dept. QA-Powertrain	Source FTS	Location TMS-CHI	Ref 40280-1	Date 6/11/2007
Problem Area Base Vehicle	Primary Model Matrix	Model Year 2006	Production Date 28-Apr-2006	Odometer 9597 mi	VIN (confirm 17 characters): 2T1KR32E56C [REDACTED]	
Condition Title Intermittent Stall/Stumble - Intake manifold						

Do not type in YELLOW shaded fields - Input data from Web page or RDM:

Repair Date 15-MAY-2007	Optional Ref.	Optional Approval
----------------------------	---------------	-------------------

Condition Description

The customer stated that the vehicle would stumble and/or stall intermittently.

Diagnostic Steps:

- The long term fuel trim was around 16% while at a normal cruise
- #4 cylinder would show misfire at times
- Fuel pressure, MAF, A/F, and O2 were all checked or replaced by the dealer

Probable Cause

A black piece of plastic was found in the intake port of the cylinder head, which would intermittently hold open a valve and cause the condition. Note: A hole was drilled in the plenum to investigate where the loose piece came from.

Part # 1: 171200D080	Part # 2:	Part # 3:	Parts Disposition: Have part / will ship	Parts Shipping Destination: CQEC
-------------------------	-----------	-----------	---	-------------------------------------

Repair Process

The intake manifold was replaced. Note: This vehicle showed no signs of ever being involved in an accident, where the manifold could have been broken and pieces drawn into the engine.

356 2 12/06

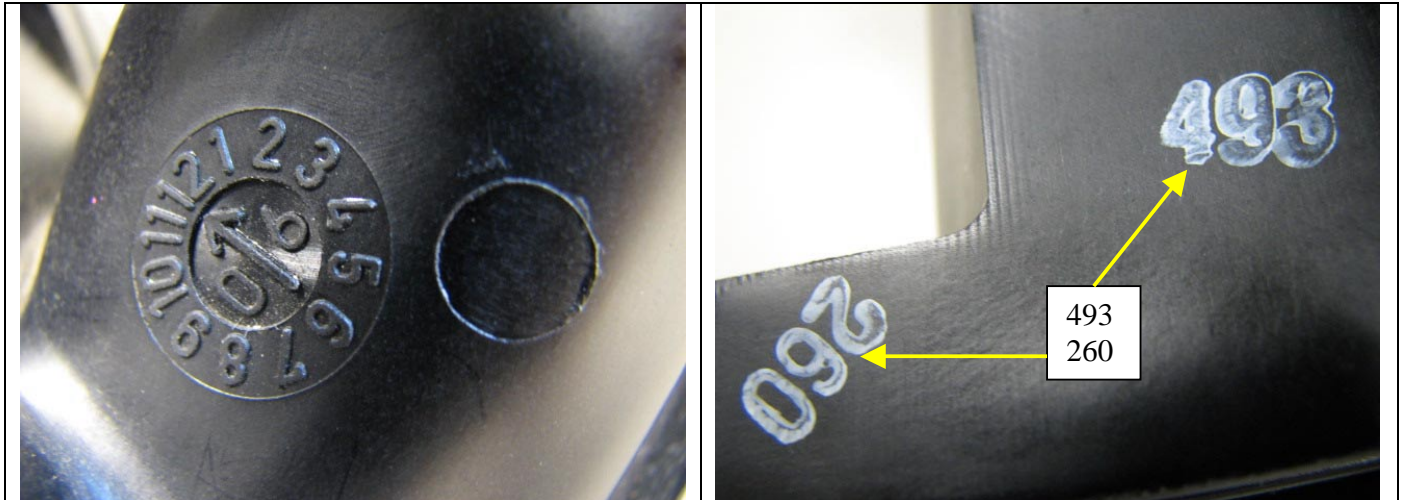
Piece of plastic found in the #4 cyl. intake port (dealer drilled the hole to secure it to the manifold) 16 X 38 mm in size

A355

FIELD TECHNICAL REPORT



TQCN DOC# <b>FTR-JOE314971</b>	Affiliate TMS	Dept. QA-Powertrain	Source FTS	Location TMS-CHI	Ref 40280-1	Date 6/11/2007
Problem Area Base Vehicle	Primary Model Matrix	Model Year 2006	Production Date 28-Apr-2006	Odometer 9597 mi	VIN (confirm 17 characters): 2T1KR32E56C [REDACTED]	
Condition Title Intermittent Stall/Stumble - Intake manifold						



Attachment 1: PRCS

Attachment 1: **Parts Recovery Control Sheet**

Do not type in SHADED fields. If the **Final Destination** field below is "scrap", properly dispose of the part.

Orig Tracking

VIN

Doc No.



<b>Final Destination:</b>	CQEC	SETR#:		CQE Eng:	N/A	
<b>Importer: (Applies to TMC Shipments Only)</b>		Deliver to:		住所 :		
Mr. N. Okumura, Chief Expert Quality Div. Warranty Parts Room TOYOTA MOTOR CORPORATION 1 Toyota, Toyota-city, Aichi, 471-8571 Japan		Attn:		宛先 :		
		Tel:		Tel :		
T-STAR						
Note: If this FTR contains more than one VIN, create a table in the report containing VIN, production date, and odometer					FOR CUSTOMS USE: Used Parts Value	
<b>1</b>	<b>Part # 1:</b> 171200D080 Comments:	<b>Part Description</b> MANIFOLD ASSY, INTAKE			<b>Qty.</b> 1	<b>Used Part Value</b> \$ 46 .00

**20090820I00010**

TQCN DOC# TQCN_DPR-092110090	Affiliate <b>TMS</b>	Dept. QAPowertrain	Dealer Code <b>31011</b>	Ref 80460174	Date 08/19/2009
Dealer Name JOHNSTONS TOYOTA		Dealer City NEW HAMPTON		State NY	Region NYR
Primary Model Corolla		Model Year 2007	Production Date 27-APR-07	Odometer 67944 mi	VIN 2T1BR32E07C [REDACTED]
Part # 1: 8946702020	Part # 2:	Part # 3:	Parts Destination: CQE	Parts Available: Available upon request	Repair Date 7/23/2009
Condition Title Intermittent stall AF sensor short			Applicable DTC Code(s)		

**Condition Description**

- Customer states vehicle intermittently stalls and when it stalls all electrical components shut off then come back on.
- Problem was duplicated

**Diagnostic Steps:**

1. MDT checked bat, +bm, +b and VC terminals of the ecu for voltage.
2. MDT found that +B drops to 6 volts when the car stalls.
3. MDT checked the circuit for high resistance and shorts to ground, all ok.
4. MDT unplugged the A/F sensor and the vehicle stopped stalling.

**Probable Cause**

unknown

**Repair Process**

MDT replaced the A/F sensor to remedy the concern.

	 <p style="text-align: center;">Date Code 04J01</p>	
---	---	--

DEALERSHIP PRODUCT REPORT



TQCN DOC# TQCN_DPR-092110090		Condition Title Intermittent stall AF sensor short			Date 08/19/2009	
Primary Model Corolla		Model Year 2007	Production Date 27-APR-07	Odometer 67944 mi	VIN 2T1BR32E07C [REDACTED]	

Attachment 1: <b>Parts Recovery Control Sheet</b>		Orig Tracking	 
Do not type in SHADED fields. If the <b>Final Destination</b> field below is "scrap", properly dispose of the part.		VIN	
		Doc No.	
<b>Final Destination:</b>	CQE	SETR#:	CQE Eng:
<b>Importer: (Applies to TMC Shipments Only)</b>	Deliver to:		住所 :
Mr. N. Okumura, Chief Expert Quality Div. Warranty Parts Room TOYOTA MOTOR CORPORATION 1 Toyota, Toyota-city, Aichi, 471-8571 Japan	Attn:		宛先 :
	Tel:		Tel:

				VALUE FOR CUSTOMS USE:
<b>1</b>	Part # 1: 8946702020	Part Description SENSOR, AIR FUEL RATIO	Qty. 1	Used Part Value Each \$ 28.40
	Comments:			
<b>2</b>	Part # 2:	Part Description	Qty.	Used Part Value Each \$
	Comments:			
<b>3</b>	Part # 3:	Part Description	Qty.	Used Part Value Each \$
	Comments:			

**20040828100020**



TQCN DOC# <b>FTR-9TE124041</b>		Affiliate TCI	Dept. QA-Powertrain	Source IDS	Location TCI	Ref 23077-1	Date 8/27/2004
Problem Area Base Vehicle	Primary Model Corolla	Model Year 2005	Production Date	Odometer 196	VIN (confirm 17 characters): 2T1BR32E35C [REDACTED]		

**Condition Title**  
'05 Corolla fuel pump inoperative

**Do not type in YELLOW shaded fields - Input data from Web page or RDM:**

Repair Date 08/24/04	Optional Ref.	Optional Approval
-------------------------	---------------	-------------------

**Condition Description**

- Vehicle stall while driving and would not restart
- Vehicle was towed to the dealership

**Diagnostic Steps:**

- Check fuel pressure, no fuel pressure
- Check power supply to the pump, 10.50 ~ 11.0 V (Spec between 9 to 12 Volt)
- Check continuity at the pump, no continuity ( Spec 0.2 Ω to 3.0Ω at 20°C)
- Remove pump from the gas tank, found black deposit in the fuel tank
- Insert magnet to see if the black deposit was of a ferrous composition, the black deposit was attracted to the magnet
- Disassemble the SIFS (SIFS assembly include fuel suction plate sub-assy, fuel filter assy, Fuel pump and fuel pump filter assy) and found black deposit in the bottom portion of the SIFS,
- Remove the fuel pump from the SIFS assembly and apply current from 0V to 4V, there was no rotation of the pump
- Found black deposit on the top of the fuel pump

**Probable Cause**

- Pump malfunction

Part # 1: 232210D100	Part # 2: 7700102220	Part # 3: 7720102150	Parts Disposition: Have part / will ship	Parts Shipping Destination: TMMNA
-------------------------	-------------------------	-------------------------	---	--------------------------------------

**Repair Process**

Replace fuel tank, fuel pump and full filler neck. Vehicle started OK. All parts will be ship to Denso in Michigan

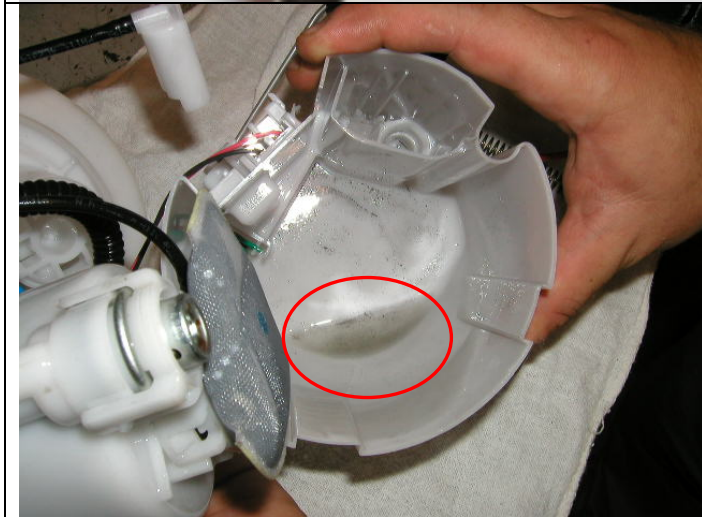


- Black deposit found at the bottom of the tank when the fuel pump was removed

TQCN DOC# <b>FTR-9TE124041</b>	Affiliate TCI	Dept. QA-Powertrain	Source IDS	Location TCI	Ref 23077-1	Date 8/27/2004
Problem Area Base Vehicle	Primary Model Corolla	Model Year 2005	Production Date	Odometer 196	VIN (confirm 17 characters): 2T1BR32E35C [REDACTED]	



- Insert a magnet into the fuel tank to confirm if the black deposit would be attracted to the magnet
- Black deposit was attracted to the magnet

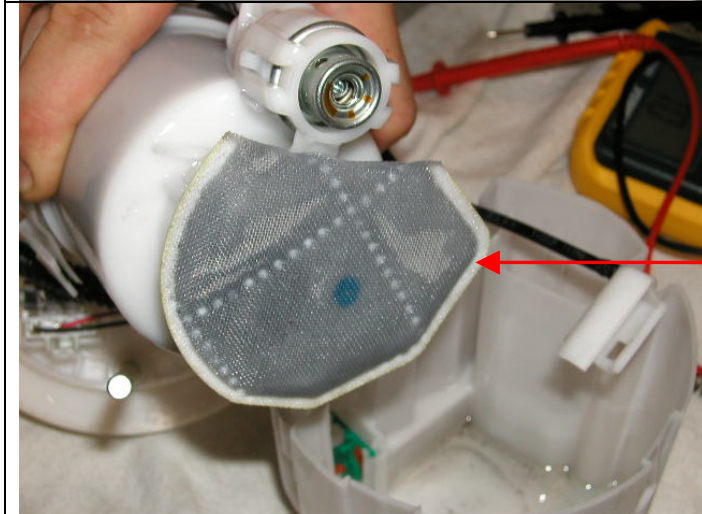


- Black deposit is found inside the bottom portion of SIFS assembly

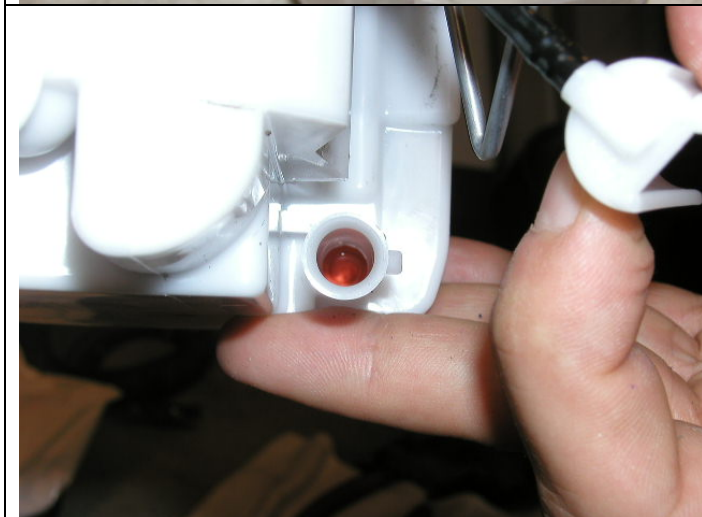
TQCN DOC# <b>FTR-9TE124041</b>	Affiliate TCI	Dept. QA-Powertrain	Source IDS	Location TCI	Ref 23077-1	Date 8/27/2004
Problem Area Base Vehicle	Primary Model Corolla	Model Year 2005	Production Date	Odometer 196	VIN (confirm 17 characters): 2T1BR32E35C [REDACTED]	



- Zoom of the deposit in the SIFS assembly

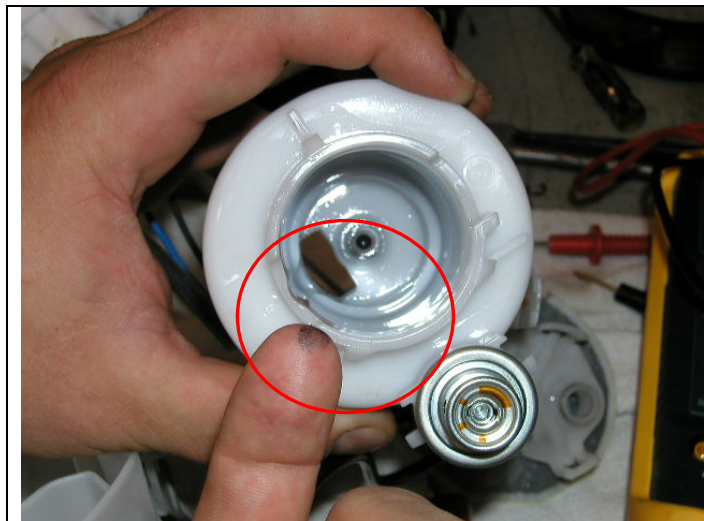


- Fuel filter condition



- No obstruction of the SIFS orifice

TQCN DOC# <b>FTR-9TE124041</b>	Affiliate TCI	Dept. QA-Powertrain	Source IDS	Location TCI	Ref 23077-1	Date 8/27/2004
Problem Area Base Vehicle	Primary Model Corolla	Model Year 2005	Production Date	Odometer 196	VIN (confirm 17 characters): 2T1BR32E35C [REDACTED]	



- Black deposit was found in the cap going on top of the fuel pump



- Zoom of the top of the cap of fuel pump



- Black deposit is found on the top of the pump
- Picture showing manufacturing markings (square box)



TQCN DOC# <b>FTR-9TE124041</b>	Affiliate TCI	Dept. QA-Powertrain	Source IDS	Location TCI	Ref 23077-1	Date 8/27/2004
Problem Area Base Vehicle	Primary Model Corolla	Model Year 2005	Production Date	Odometer 196	VIN (confirm 17 characters): 2T1BR32E35C [REDACTED]	

Attachment 1: PRCS

Attachment 1: **Parts Recovery Control Sheet**

Do not type in SHADED fields. If the **Final Destination** field below is "scrap", properly dispose of the part.

Orig Tracking

VIN

Doc No.



<b>Final Destination:</b> TMMNA	SETR#:	CQE Eng:	N/A
<b>Importer: (Applies to TMC Shipments Only)</b> Denso International America, INC Marketing And Engineering Division- Engineering Group 24777 Denso Drive Shouthfield, Michigan 48086-5047	Deliver to:  Attn: Bill Attwood  Tel: 248-372-8886	住所 :  宛先 :  Tel:	
T-STAR			
Note: If this FTR contains more than one VIN, create a table in the report containing VIN, production date, and odometer			FOR CUSTOMS USE: Used Parts Value
Part #	Part Description	Qty.	Used Part Value
1 Part # 1: HS# Origin 232210D100 Comments:	PUMP, FUEL	1	\$ 46.73
2 Part # 2: 7700102220 Comments:	TANK SUB-ASSY, FUEL	0	\$ 58.16
3 Part # 3: 7720102150 Comments:	PIPE SUB-ASSY, FUEL TANK FILLER	0	\$ 14.63
4 Part # 4: Comments:			\$ .00
5 Part # 5: Comments:			\$ .00
6 Part # 6: Comments:			\$ .00
7 Part # 7: Comments:			\$ .00
8 Part # 8: Comments:			\$ .00

**20040908700570**

TQCN DOC# <b>FTR-81E124441A</b>		Affiliate TMS	Dept. QA-Powertrain	Source FTS	Location TMS-NY	Ref 23077-1	Date 9/2/2004
Problem Area Base Vehicle	Primary Model Corolla	Model Year 2005	Production Date 05-2004	Odometer 1390 mi	VIN (confirm 17 characters): 2T1BR30E05C [REDACTED]		
Condition Title 05 Corolla Fuel Pump Siezed							

Do not type in YELLOW shaded fields - Input data from Web page or RDM:

Repair Date 8/20/04	Optional Ref.	Optional Approval
------------------------	---------------	-------------------

Condition Description

- The Customer states: that the engine will crank but will not start.
- The customer called AAA; the AAA staff confirmed the condition and tapped on the fuel pump module and the vehicle engine started.
- A few days later the customer encounter the problem again, at this time the vehicle was towed into the dealership.

Diagnostic Steps:

- The dealer technician confirmed the following,
- The engine no start condition was duplicated all of the time.
- **Checked "Fuel Pressure during cranking" > 0 PSI**
- **Checked "Spark plug ignition during cranking" > No Spark**
- Performed active test on Fuel Pump with ScanTool > the fuel pump started working.
- After the Fuel Pump active test, the problem could no longer be duplicated.
- FTS inspection result of 8/27/04
- The customer complaint could not be duplicated.
- Engine starts fine (about 1 sec cranking is needed to start the Engine).
- Test-drove the vehicle about 3 miles in the city, no abnormalities were found.
- No DTC memorized in ECM.
- Check Fuel Pressure during cranking > 49psi (Spec: 44-50psi)
- Check Fuel Pressure after engine shut off > held 41psi for 30 min. (Spec: more than 21 psi. for 5 min)
- Checked the voltage at the Fuel pump module connector pin#5 > 12.7V with Engine On.
- Check the electrical current at the Fuel pump module connector pin#4, 3.0A (idle~4000rpm) with headlights, A/C, and interior lights on.
- Check the resistance of the Fuel pump > 1.1 ohm@78F (Spec:0. 2~3.0ohm)
- Visual check of the inside of the Fuel pump module case > very small amount of black dust was found.
- The black dust material would not stick to a magnet.
- There was no black dust in the gas tank.
- The ECM P/N is 89661-02C10(Delphi)

Probable Cause

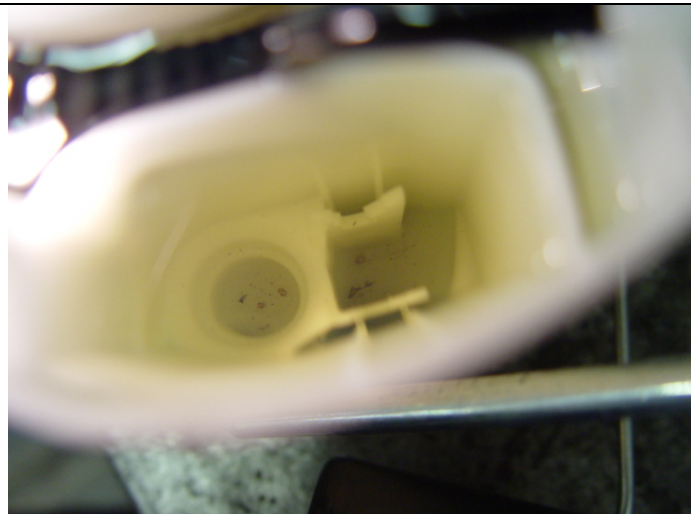
- Unknown.

Part # 1: 8966102C10	Part # 2: 7702002180	Part # 3:	Parts Disposition: Have part / will ship	Parts Shipping Destination: TMMNA
-------------------------	-------------------------	-----------	---	--------------------------------------

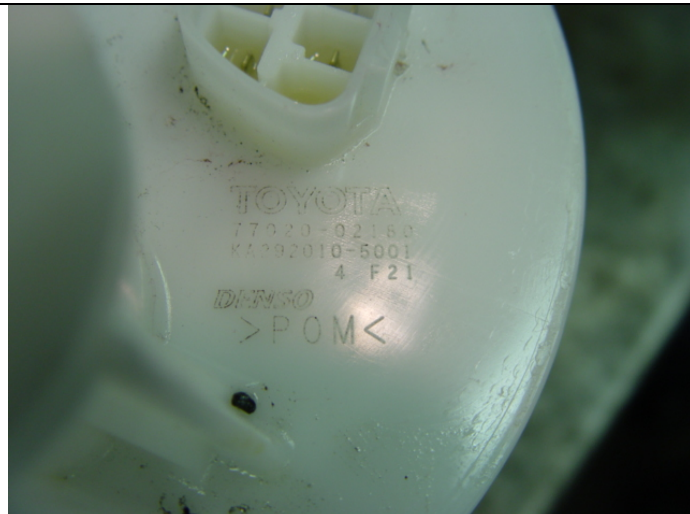
Repair Process

TQCN DOC# <b>FTR-81E124441A</b>		Affiliate TMS	Dept. QA-Powertrain	Source FTS	Location TMS-NY	Ref 23077-1	Date 9/2/2004
Problem Area Base Vehicle	Primary Model Corolla		Model Year 2005	Production Date 05-2004	Odometer 1390 mi	VIN (confirm 17 characters): 2T1BR30E05C [REDACTED]	
Condition Title 05 Corolla Fuel Pump Siezed							

- The dealership will replace the fuel pump module and ECM.
- (TMS-NY FPE will return the recovered fuel pump module to TMS-PRC.)



Black dust in fuel pump module case.



Part# and date code.  
77020-02180, 4F21



Voltage and electrical current were measured at Fuel pump module connector Pin#4 and Pin#5.



"Very Hard to remove.zip"

The attached video was recorded when removing the fuel pump module. It's too tight and hard to remove. A ½ inch impact gun was needed to remove the fuel pump gauge retainer from the fuel tank.

Attachment 1: PRCS



TQCN DOC# <b>FTR-81E124441A</b>	Affiliate TMS	Dept. QA-Powertrain	Source FTS	Location TMS-NY	Ref 23077-1	Date 9/2/2004
Problem Area Base Vehicle	Primary Model Corolla	Model Year 2005	Production Date 05-2004	Odometer 1390 mi	VIN (confirm 17 characters): 2T1BR30E05C [REDACTED]	
Condition Title 05 Corolla Fuel Pump Siezed						

Attachment 1: **Parts Recovery Control Sheet**

Orig Tracking

VIN

Doc No.



Do not type in SHADED fields. If the **Final Destination** field below is "scrap", properly dispose of the part.

<b>Final Destination:</b> TMMNA	SETR#:	CQE Eng:	N/A
<b>Importer: (Applies to TMC Shipments Only)</b> North America EDER Gr., Technical Dept. #1 Overseas Customer Service Technical Div. TOYOTA MOTOR CORPORTATION Nisshin Education & Training Center 5-210, SAKAE, NISSHIN, AICH, 470-0113 Japan	Deliver to:  Attn:  Tel:	住所 :  宛先 :  Tel:	

T-STAR		
--------	--	--

Note: If this FTR contains more than one VIN, create a table in the report containing VIN, production date, and odometer

FOR CUSTOMS USE:  
Used Parts Value

	Part # 1:	Part Description	Qty.	Used Part Value
1	8966102C10	COMPUTER, ENGINE CONTROL	1	\$ 130 .00
	Comments:			
2	7702002180	TUBE ASSY, FUEL SUCTION W/PUMP GAGE	1	\$ 110 .00
	Comments:			
3			0	\$ 0 .00
	Comments:			
4				\$ .00
	Comments:			
5				\$ .00
	Comments:			
6				\$ .00
	Comments:			
7				\$ .00
	Comments:			
8				\$ .00
	Comments:			

**20041104900390**

TQCN DOC# <b>FTR-VZE330341</b>		Affiliate TMS	Dept. QA-Powertrain	Source TMS SrvCtr	Location TMS	Ref 23283-1	Date 11/1/2004
Problem Area Base Vehicle	Primary Model Matrix	Model Year 2005	Production Date 10-2004	Odometer 4 mi	VIN (confirm 17 characters): 2T1KR32E95C [REDACTED]		
Condition Title Engine ECU Malfunction							

Do not type in YELLOW shaded fields - Input data from Web page or RDM:

Repair Date	Optional Ref.	Optional Approval
-------------	---------------	-------------------

**Condition Description**

The vehicle was towed from the port with a crank but no start condition. The malfunction indicator light in the combination meter was not on with the key on engine off.

**Diagnostic Steps:**

Verified all power sources and ground connections to the ECU were normal and that all connectors were fully seated and locked.

**Probable Cause**

Suspect internal malfunction in the ECU.

Part # 1: 8966101131	Part # 2:	Part # 3:	Parts Disposition: Have part / will ship	Parts Shipping Destination: TMMNA
-------------------------	-----------	-----------	---	--------------------------------------

**Repair Process**

Replace the engine ECU.  
Vehicle starts and runs normal.  
Tag and recover the original part.



Suspect internal ECU malfunction.



Attachment 1: PRCS

TQCN DOC# <b>FTR-VZE330341</b>		Affiliate TMS	Dept. QA-Powertrain	Source TMS SrvCtr	Location TMS	Ref 23283-1	Date 11/1/2004
Problem Area Base Vehicle	Primary Model Matrix	Model Year 2005	Production Date 10-2004	Odometer 4 mi	VIN (confirm 17 characters): 2T1KR32E95C [REDACTED]		
Condition Title Engine ECU Malfunction							

Attachment 1: **Parts Recovery Control Sheet**

Orig Tracking

VIN

Doc No.



Do not type in SHADED fields. If the **Final Destination** field below is "scrap", properly dispose of the part.

<b>Final Destination:</b> TMMNA		SETR#:	CQE Eng:	N/A
<b>Importer: (Applies to TMC Shipments Only)</b>		Deliver to:		住所:
North America EDER Gr., Technical Dept. #1 Overseas Customer Service Technical Div. TOYOTA MOTOR CORPORATION Nisshin Education & Training Center 5-210, SAKAE, NISSHIN, AICH, 470-0113 Japan		Attn:		宛先:
		Tel:		Tel:
T-STAR				
Note: If this FTR contains more than one VIN, create a table in the report containing VIN, production date, and odometer				FOR CUSTOMS USE: Used Parts Value
1	Part # 1: 8966101131	Part Description COMPUTER, ENGINE CONTROL	Qty. 1	Used Part Value \$ 130 .00
	Comments:			
2	Part # 2:	Part Description	Qty. 0	Used Part Value \$ 0 .00
	Comments:			
3	Part # 3:	Part Description	Qty. 0	Used Part Value \$ 0 .00
	Comments:			
4	Part # 4:	Part Description	Qty.	Used Part Value \$ .00
	Comments:			
5	Part # 5:	Part Description	Qty.	Used Part Value \$ .00
	Comments:			
6	Part # 6:	Part Description	Qty.	Used Part Value \$ .00
	Comments:			
7	Part # 7:	Part Description	Qty.	Used Part Value \$ .00
	Comments:			
8	Part # 8:	Part Description	Qty.	Used Part Value \$ .00
	Comments:			

**20050314100030**

TQCN DOC# <b>FTR-5BE406051</b>		Affiliate TMS	Dept. QA-Powertrain	Source FTS	Location TMS-SF	Ref 23283-1	Date 3/13/2005
Problem Area Base Vehicle	Primary Model CorollaNUMMI	Model Year 2005	Production Date 05-May-2004	Odometer 3550 mi	VIN (confirm 17 characters): 1NXBR32E85Z [REDACTED]		
Condition Title Hard starting, excessive cranking							

Do not type in YELLOW shaded fields - Input data from Web page or RDM:

Repair Date 10/11/2004	Optional Ref.	Optional Approval
---------------------------	---------------	-------------------

Condition Description

The engine cranks, but will not start. Condition is intermittent, and can occur hot or cold. When engine does start, engine may stumble momentarily before it can stabilize to normal idle speed.

Diagnostic Steps:

The condition could not be duplicated during diagnosis. Fuel pressure with engine at warm idle was 324 kPa (47 psi). Residual fuel pressure after engine was turned off was greater than 147 kPa (21 psi). Resistance of fuel pump was 1.1 ohms at 70 degrees F.

The fuel pump inlet filter appeared free of any foreign material. Metal debris was found at the bottom of the fuel suction support assembly #1. Due to this observation, a fuel pump was suspected as the primary cause of the condition.

The fuel pump assembly was replaced, and the condition duplicated within one week.

Probable Cause

Faulty Engine ECU.

Part # 1: 8966102C11	Part # 2:	Part # 3:	Parts Disposition: No part available	Parts Shipping Destination: N/A
-------------------------	-----------	-----------	---	------------------------------------

Repair Process

Replaced Engine ECU (#89611-02C11). Condition corrected.



Attachment 1: PRCS

TQCN DOC# <b>FTR-5BE406051</b>		Affiliate TMS	Dept. QA-Powertrain	Source FTS	Location TMS-SF	Ref 23283-1	Date 3/13/2005
Problem Area Base Vehicle	Primary Model CorollaNUMMI	Model Year 2005	Production Date 05-May-2004	Odometer 3550 mi	VIN (confirm 17 characters): 1NXBR32E85Z [REDACTED]		
Condition Title Hard starting, excessive cranking							

Attachment 1: **Parts Recovery Control Sheet**

Orig Tracking

VIN

Doc No.



Do not type in SHADED fields. If the **Final Destination** field below is "scrap", properly dispose of the part.

<b>Final Destination:</b> N/A	SETR#:	CQE Eng:	N/A
<b>Importer: (Applies to TMC Shipments Only)</b>	Deliver to:	住所 :	
North America EDER Gr., Technical Dept. #1 Overseas Customer Service Technical Div. TOYOTA MOTOR CORPORATION Nisshin Education & Training Center 5-210, SAKAE, NISSHIN, AICH, 470-0113 Japan	Attn:	宛先 :	
	Tel:	Tel:	

T-STAR		
--------	--	--

Note: If this FTR contains more than one VIN, create a table in the report containing VIN, production date, and odometer

FOR CUSTOMS USE:  
Used Parts Value

	Part # 1:	Part Description	Qty.	Used Part Value
1	8966102C11	COMPUTER, ENGINE CONTROL	0	\$ 130 .00
	Comments:			
2	Part # 2:	Part Description	Qty.	Used Part Value
			0	\$ 0 .00
	Comments:			
3	Part # 3:	Part Description	Qty.	Used Part Value
			0	\$ 0 .00
	Comments:			
4	Part # 4:	Part Description	Qty.	Used Part Value
				\$ .00
	Comments:			
5	Part # 5:	Part Description	Qty.	Used Part Value
				\$ .00
	Comments:			
6	Part # 6:	Part Description	Qty.	Used Part Value
				\$ .00
	Comments:			
7	Part # 7:	Part Description	Qty.	Used Part Value
				\$ .00
	Comments:			
8	Part # 8:	Part Description	Qty.	Used Part Value
				\$ .00
	Comments:			

**20050407500050**



TQCN DOC# <b>FTR-9HE309151</b>		Affiliate TCI	Dept. QA-Powertrain	Source IDS	Location TCI-TOR	Ref 26508-1	Date 4/6/2005
Problem Area Base Vehicle	Primary Model Matrix	Model Year 2005	Production Date 01-Jul-2004	Odometer 6791 km	VIN (confirm 17 characters): 2T1KR32E95C [REDACTED]		
Condition Title Engine No Start-Corroded EVAP Pump Module Connector							

Do not type in YELLOW shaded fields - Input data from Web page or RDM:

Repair Date 24-MAR-2005	Optional Ref.	Optional Approval
----------------------------	---------------	-------------------

Condition Description

Customer states the vehicle will not start.

Diagnostic Steps:

- 1<sup>st</sup> Repair Attempt: The engine would crank, but not start. MIL is 'ON'
- Retrieved the following DTCs
    - P0606 ECM/PCM Processor
    - P2103 Throttle Actuator Control Motor Circuit High
    - P2121 Throttle/Pedal Position Sensor/Switch "D" circuit Range/Performance
  - Condition occurred when the vehicle had been cold soaked for 8 hours, with an ambient temperature plus 6 degrees Celsius.
  - ECM and Throttle Body replaced; operation of vehicle was normal, for a period of 7 days (Ambient temperature was below 0° Celsius)
- 2<sup>nd</sup> Repair Attempt: On the 8<sup>th</sup> day, ambient temperature increased to 5° Celsius.
- Vehicle was been parked for more than 5 hours.
  - Customer attempted to start their vehicle, engine would not start with the MIL "ON"

Diagnostic steps from the 2<sup>nd</sup> Repair Attempt.

- Attempt to start engine, engine starts but stalls within seconds after engine start.
- Retrieved the DTCs P2103 and P2103 from **new** ECM
- Throttle body circuits were checked per RM 05-269 –checked **OK**
- Check for foreign objects between the throttle valve and housing; No foreign objects found.
- Using the EWD, the VC circuit at Throttle Motor pin #5 (yellow wire/connector T6) read: 11.47 volts – **NG** (spec is 5V)
- Traced the yellow wire back to junction block J5, voltage still read 11.47 volts
- Traced the yellow wire back to the L4 connector of the Leak Detection Pump Assembly
- L4 connector was disconnected, corrosion was found in the L4 connector.
- 11.47 volts was found at pins, 4, 8 and 9 of the L4 connector.
- There was continuity from pin 4 of L4 connector to pins 6, 7, and 8 of the 1D2 connector.

Probable Cause


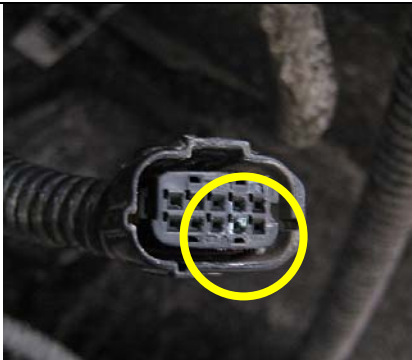
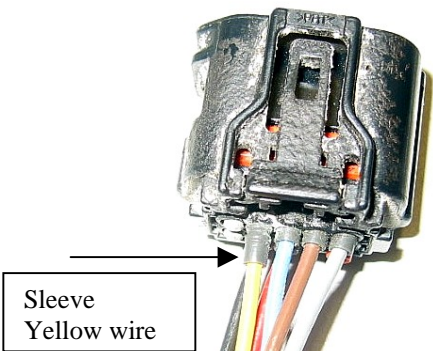
Corrosion with the L4 connector causing an electrical short.  
When the ECM runs the EVAP System Monitor, current from B+ flows through the shorted wires at connector L4, shorting out the throttle motor and ECM.

Part # 1: 8216102J30	Part # 2: 7774002130	Part # 3: 8966101132	Parts Disposition: Have part / will ship	Parts Shipping Destination: CQEC
-------------------------	-------------------------	-------------------------	---	-------------------------------------

Repair Process

Replaced ECM, throttle control motor, charcoal canister, and wiring harness from connector 1D2 to L4.  
Vehicle has been monitored for a period of 7 days, all days having ambient temperature above 5° Celsius. Operation is normal, no MIL "ON."

TQCN DOC# <b>FTR-9HE309151</b>		Affiliate TCI	Dept. QA-Powertrain	Source IDS	Location TCI-TOR	Ref 26508-1	Date 4/6/2005
Problem Area Base Vehicle	Primary Model Matrix	Model Year 2005	Production Date 01-Jul-2004	Odometer 6791 km	VIN (confirm 17 characters): 2T1KR32E95C [REDACTED]		
Condition Title Engine No Start-Corroded EVAP Pump Module Connector							

 <p>E: ¥TI information ¥ Matrix ¥Aurora Snap s</p>	<p>This techview file was taken, during the attempt to start the vehicle's engine. This frame shows that the fuel pump is 'ON', the Starter Signal is 'ON', the engine is cranking, at engine speed is 232 rpm. And the throttle position is 18%. The Injector value is 0.0 ms through the entire duration of the snap shot.</p>
	<p>Connector L4 (harness side) Corrosion in the L4 connector</p>
 <p>Sleeve Yellow wire</p>	<p>View looking at the L4 connector. The sleeve on the yellow wire sticks out, away from the connector, further than the other sleeve compared to the other wires.</p>

Attachment 1: PRCS

TQCN DOC# <b>FTR-9HE309151</b>	Affiliate TCI	Dept. QA-Powertrain	Source IDS	Location TCI-TOR	Ref 26508-1	Date 4/6/2005
Problem Area Base Vehicle	Primary Model Matrix	Model Year 2005	Production Date 01-Jul-2004	Odometer 6791 km	VIN (confirm 17 characters): 2T1KR32E95C [REDACTED]	
Condition Title Engine No Start-Corroded EVAP Pump Module Connector						

Attachment 1: **Parts Recovery Control Sheet**

Orig Tracking

VIN

Doc No.

Do not type in SHADED fields. If the **Final Destination** field below is "scrap", properly dispose of the part.



<b>Final Destination:</b> CQEC	SETR#:	CQE Eng:	N/A
<b>Importer: (Applies to TMC Shipments Only)</b>	Deliver to:	住所 :	
Mr. N. Okumura, Chief Expert Quality Div. Warranty Parts Room TOYOTA MOTOR CORPORATION 1 Toyota, Toyota-city, Aichi, 471-8571 Japan	Attn:	宛先 :	
	Tel:	Tel:	

T-STAR		
--------	--	--

Note: If this FTR contains more than one VIN, create a table in the report containing VIN, production date, and odometer

FOR CUSTOMS USE:  
Used Parts Value

	Part # 1:	Part Description	Qty.	Used Part Value
1	8216102J30	WIRE, FLOOR	1	\$ 74 .00
	Comments:			
2	7774002130	CANISTER ASSY, CHARCOAL	1	\$ 35 .00
	Comments:			
3	8966101132	COMPUTER, ENGINE CONTROL	1	\$ 184 .00
	Comments:			
4				\$ .00
	Comments:			
5				\$ .00
	Comments:			
6				\$ .00
	Comments:			
7				\$ .00
	Comments:			
8				\$ .00
	Comments:			

**20061018700140**

TQCN DOC# <b>FTR-TBE127761A</b>		Affiliate TMEX	Dept. QA-Powertrain	Source FTS	Location TDM	Ref 23077-3	Date 10/17/2006
Problem Area Base Vehicle	Primary Model Corolla	Model Year 2006	Production Date 03/06	Odometer 3636 KM	VIN (confirm 17 characters): 2T1BR32E96C [REDACTED]		
Condition Title Debris in fuel tank causing a stall							

Do not type in YELLOW shaded fields - Input data from Web page or RDM:

Repair Date	Optional Ref.	Optional Approval
-------------	---------------	-------------------

**Condition Description**

Customer states that the vehicle stalls while driving, after a few minutes the engine would restart but it will stall again

**Diagnostic Steps:**

1. While duplicating concern, technician found that fuel pressure dropped when the engine stalled.
2. Technician inspected the fuel pump, and noticed foreign material in fuel tank
3. Technician noticed that the foreign material plugged up the fuel pump pick up, causing the vehicle to stall.

**Probable Cause**

Unknown

Part # 1: 7702002180	Part # 2:	Part # 3:	Parts Disposition: Have part / will ship	Parts Shipping Destination: CQEC
-------------------------	-----------	-----------	---	-------------------------------------

**Repair Process**

Technician clean the fuel tank from all foreign particles  
 Technician clean the Fuel Pump Assembly  
 Technician did not replaced fuel pump assembly, technician states that he just clean very well all parts and reinstall the gas tank.  
 Technicians clean the fuel lines to make sure no foreign particles where noticeable in fuel line.



FOREIGN MATERIAL FROM FUEL TANK

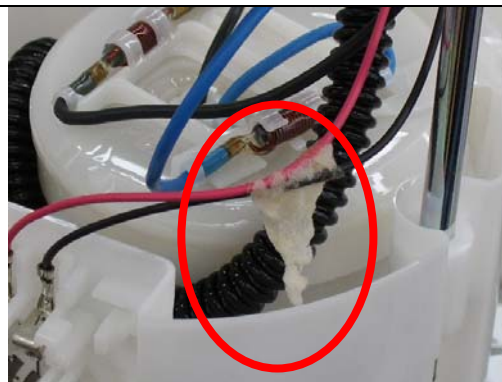


FOREIGN MATERIAL STUCK IN FUEL PICK UP

TQCN DOC# <b>FTR-TBE127761A</b>	Affiliate TMEX	Dept. QA-Powertrain	Source FTS	Location TDM	Ref 23077-3	Date 10/17/2006
Problem Area Base Vehicle	Primary Model Corolla	Model Year 2006	Production Date 03/06	Odometer 3636 KM	VIN (confirm 17 characters): 2T1BR32E96C [REDACTED]	
Condition Title Debris in fuel tank causing a stall						

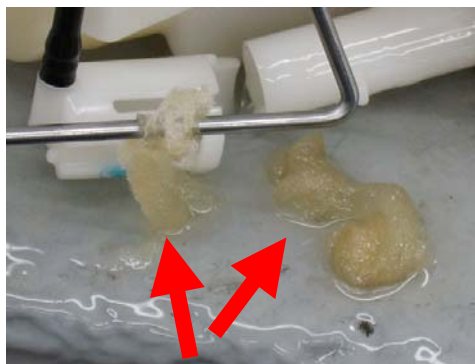


Fuel Pump pick up contaminated



Foreign material was found all over the fuel pump

Attachment 1: PRCS



THIS FOREIGN MATERIAL WAS BLOCKING THE FUEL PUMP PRESSURE LINE

Attachment 1: Parts Recovery Control Sheet

Do not type in SHADED fields. If the Final Destination field below is "scrap", properly dispose of the part.

Orig Tracking  
VIN  
Doc No.



<b>Final Destination:</b> CQEC	SETR#:	CQE Eng:	N/A
<b>Importer: (Applies to TMC Shipments Only)</b> Mr. N. Okumura, Chief Expert Quality Div. Warranty Parts Room TOYOTA MOTOR CORPORATION 1 Toyota, Toyota-city, Aichi, 471-8571 Japan	Deliver to:  Attn:  Tel:	住所 :  宛先 :  Tel:	
T-STAR		[Barcode]	
Note: If this FTR contains more than one VIN, create a table in the report containing VIN, production date, and odometer			FOR CUSTOMS USE: Used Parts Value
<b>Part # 1:</b> 7702002180	<b>Part Description:</b> TUBE ASSY, FUEL SUCTION W/PUMP & GAGE	<b>Qty.:</b> 1	<b>Used Part Value:</b> \$ 115 .00
Comments:			

**20061209700040**



TQCN DOC# <b>FTR-7QE131161</b>		Affiliate TMS	Dept. QA-Electrical	Source FTS	Location TMS-LA	Ref 36734-1	Date 12/8/2006
Problem Area Base Vehicle	Primary Model Corolla	Model Year 2006	Production Date 01-Dec-2005	Odometer 7260 mi	VIN (confirm 17 characters): 2T1BY32E16C [REDACTED]		
Condition Title Stalls at times							

Do not type in YELLOW shaded fields - Input data from Web page or RDM:

Repair Date <b>07-NOV-2006</b>	Optional Ref.	Optional Approval
-----------------------------------	---------------	-------------------

Condition Description

- Customer complaint of vehicle dies while driving.
- Condition would occur during downshifting or idling for an extended period.

Diagnostic Steps:

- Condition could be duplicated while tapping ECM or by shaking engine control wire harness at right hand entrance point into firewall.
- Wire harness removed and found to have intermittent open between junction connector J2-J3 and Throttle Position Sensor.
- Wire harness was subsequently opened for inspection and found to have broken brown ground supply wire in engine side of harness (see attached for location).

Probable Cause

Broken ground in engine wire harness.

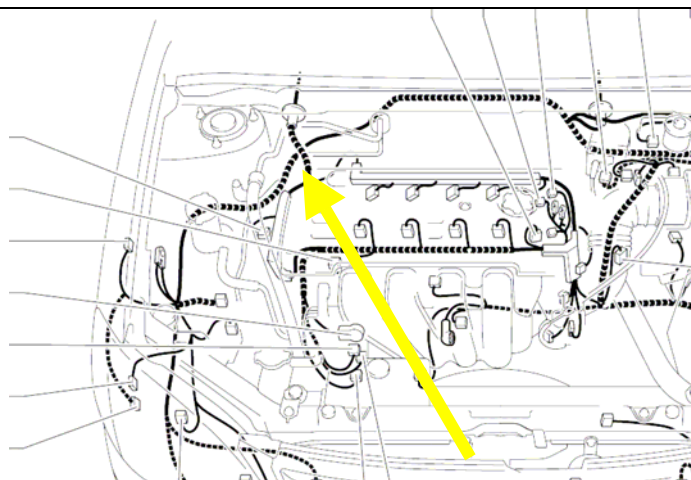
Part # 1: N/A	Part # 2:	Part # 3:	Parts Disposition: No part available	Parts Shipping Destination: N/A
------------------	-----------	-----------	---	------------------------------------

Repair Process

Repair wire harness and road test.



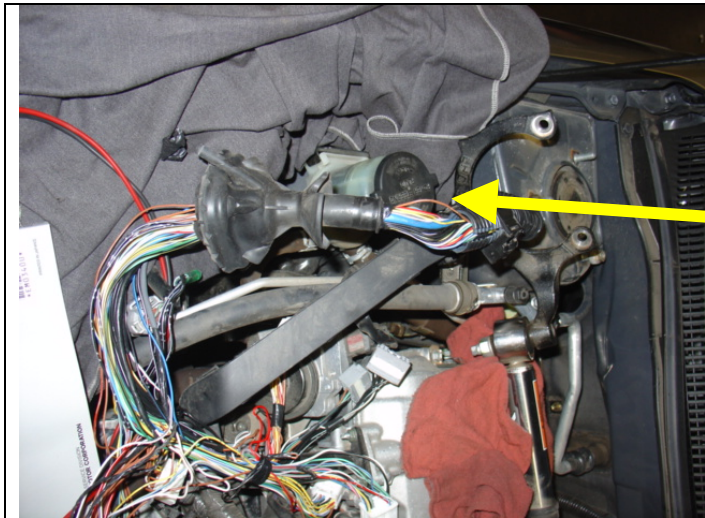
Broken wire seen here. Insulation is still intact.



Condition occurred in this area.



TQCN DOC# <b>FTR-7QE131161</b>		Affiliate TMS	Dept. QA-Electrical	Source FTS	Location TMS-LA	Ref 36734-1	Date 12/8/2006
Problem Area Base Vehicle	Primary Model Corolla	Model Year 2006	Production Date 01-Dec-2005	Odometer 7260 mi	VIN (confirm 17 characters): 2T1BY32E16C [REDACTED]		
Condition Title Stalls at times							

	<p>Overview of harness. Break is here. Loom has been removed from computer side for repair.</p>
---	---

Attachment 1: PRCS

TQCN DOC# <b>FTR-7QE131161</b>		Affiliate TMS	Dept. QA-Electrical	Source FTS	Location TMS-LA	Ref 36734-1	Date 12/8/2006
Problem Area Base Vehicle	Primary Model Corolla	Model Year 2006	Production Date 01-Dec-2005	Odometer 7260 mi	VIN (confirm 17 characters): 2T1BY32E16C [REDACTED]		
Condition Title Stalls at times							

Attachment 1: **Parts Recovery Control Sheet**

Orig Tracking

VIN

Doc No.

Do not type in SHADED fields. If the **Final Destination** field below is "scrap", properly dispose of the part.



<b>Final Destination:</b> N/A	SETR#:	CQE Eng:	N/A
<b>Importer: (Applies to TMC Shipments Only)</b>	Deliver to:	住所 :	
Mr. N. Okumura, Chief Expert Quality Div. Warranty Parts Room TOYOTA MOTOR CORPORATION 1 Toyota, Toyota-city, Aichi, 471-8571 Japan	Attn:	宛先 :	
	Tel:	Tel:	

T-STAR		
--------	--	--

Note: If this FTR contains more than one VIN, create a table in the report containing VIN, production date, and odometer

FOR CUSTOMS USE:  
Used Parts Value

	Part # 1:	Part Description	Qty.	Used Part Value
1	N/A		0	\$ 0 .00
	Comments:			
2	Part # 2:	Part Description	Qty.	Used Part Value
			0	\$ 0 .00
	Comments:			
3	Part # 3:	Part Description	Qty.	Used Part Value
			0	\$ 0 .00
	Comments:			
4	Part # 4:	Part Description	Qty.	Used Part Value
				\$ .00
	Comments:			
5	Part # 5:	Part Description	Qty.	Used Part Value
				\$ .00
	Comments:			
6	Part # 6:	Part Description	Qty.	Used Part Value
				\$ .00
	Comments:			
7	Part # 7:	Part Description	Qty.	Used Part Value
				\$ .00
	Comments:			
8	Part # 8:	Part Description	Qty.	Used Part Value
				\$ .00
	Comments:			

**20070209101030**

TQCN DOC# <b>FTR-7RE403671B</b>	Affiliate TMS	Dept. QA-Powertrain	Source FTS	Location TMS	Ref 36659-1	Date 2/8/2007
Problem Area Base Vehicle	Primary Model CorollaNUMMI	Model Year 2006	Production Date 25-Feb-2006	Odometer 10381 mi	VIN (confirm 17 characters): 1NXBR30E76Z [REDACTED]	
Condition Title MIL ON P0607						

Do not type in YELLOW shaded fields - Input data from Web page or RDM:

Repair Date 04-JAN-2007	Optional Ref.	Optional Approval
----------------------------	---------------	-------------------

Condition Description

Customer states vehicle stalls intermittently.

Diagnostic Steps:

- Technician could not duplicate concern and noted check engine light on.
- Technician connected Toyota H/H Tester and could not pull DTCs unless engine was running.
- Tech started engine and noted DTC P0607 (ECU CPU Malfunction).
- Technician validated circuit integrity and then replaced engine ECU, condition corrected.

Probable Cause

Unknown.

Part # 1: 8966102D20	Part # 2:	Part # 3:	Parts Disposition: Have part / will ship	Parts Shipping Destination: CQEC
-------------------------	-----------	-----------	---	-------------------------------------

Repair Process

Replaced engine ECU (P/N 89661-02D20).



Engine Control ECU (P/N 89661-02D01)  
28039800



Attachment 1: PRCS

TQCN DOC# <b>FTR-7RE403671B</b>	Affiliate TMS	Dept. QA-Powertrain	Source FTS	Location TMS	Ref 36659-1	Date 2/8/2007
Problem Area Base Vehicle	Primary Model CorollaNUMMI	Model Year 2006	Production Date 25-Feb-2006	Odometer 10381 mi	VIN (confirm 17 characters): 1NXBR30E76Z [REDACTED]	
Condition Title MIL ON P0607						

Attachment 1: **Parts Recovery Control Sheet**

Orig Tracking

VIN

Doc No.

Do not type in SHADED fields. If the **Final Destination** field below is "scrap", properly dispose of the part.



<b>Final Destination:</b> CQEC	SETR#:	CQE Eng:	N/A
<b>Importer: (Applies to TMC Shipments Only)</b>	Deliver to:	住所 :	
Mr. N. Okumura, Chief Expert Quality Div. Warranty Parts Room TOYOTA MOTOR CORPORATION 1 Toyota, Toyota-city, Aichi, 471-8571 Japan	Attn:	宛先 :	
	Tel:	Tel:	

T-STAR		
--------	--	--

Note: If this FTR contains more than one VIN, create a table in the report containing VIN, production date, and odometer

FOR CUSTOMS USE:  
Used Parts Value

	Part # 1:	Part Description	Qty.	Used Part Value
1	8966102D20	COMPUTER, ENGINE CONTROL	1	\$ 1.00
	Comments:			
2	Part # 2:	Part Description	Qty.	Used Part Value
			0	\$ 0.00
	Comments:			
3	Part # 3:	Part Description	Qty.	Used Part Value
			0	\$ 0.00
	Comments:			
4	Part # 4:	Part Description	Qty.	Used Part Value
				\$ .00
	Comments:			
5	Part # 5:	Part Description	Qty.	Used Part Value
				\$ .00
	Comments:			
6	Part # 6:	Part Description	Qty.	Used Part Value
				\$ .00
	Comments:			
7	Part # 7:	Part Description	Qty.	Used Part Value
				\$ .00
	Comments:			
8	Part # 8:	Part Description	Qty.	Used Part Value
				\$ .00
	Comments:			

**20070209101400**

TQCN DOC# <b>FTR-7RE403671</b>	Affiliate TMS	Dept. QA-Powertrain	Source FTS	Location TMS	Ref 36659-1	Date 2/6/2007
Problem Area Base Vehicle	Primary Model CorollaNUMMI	Model Year 2006	Production Date 11-Feb-2006	Odometer 6205 mi	VIN (confirm 17 characters): 1NXBR30E56Z [REDACTED]	
Condition Title Stall No start ECM						

Do not type in YELLOW shaded fields - Input data from Web page or RDM:

Repair Date <b>05-JAN-2007</b>	Optional Ref.	Optional Approval
-----------------------------------	---------------	-------------------

Condition Description

Customer complains of engine stall and low idle-intermittent.

Diagnostic Steps:

- Technician could not duplicate concern, but noted check engine light on.
- Technician connected Toyota H/H Tester and could not communicate w/ vehicle.
- Technician validated circuit integrity and then replaced engine ECU; condition corrected.

Probable Cause

Unknown.

Part # 1: 8966102D20	Part # 2:	Part # 3:	Parts Disposition: Have part / will ship	Parts Shipping Destination: CQEC
-------------------------	-----------	-----------	---	-------------------------------------

Repair Process

Replaced engine ECU (P/N 89661-02D20).



P/N 89661-02D01  
28039800



Attachment 1: PRCS

TQCN DOC# <b>FTR-7RE403671</b>	Affiliate TMS	Dept. QA-Powertrain	Source FTS	Location TMS	Ref 36659-1	Date 2/6/2007
Problem Area Base Vehicle	Primary Model CorollaNUMMI	Model Year 2006	Production Date 11-Feb-2006	Odometer 6205 mi	VIN (confirm 17 characters): 1NXBR30E56Z [REDACTED]	
Condition Title Stall No start ECM						

Attachment 1: **Parts Recovery Control Sheet**

Do not type in SHADED fields. If the **Final Destination** field below is "scrap", properly dispose of the part.

Orig Tracking

VIN

Doc No.



<b>Final Destination:</b> CQEC	SETR#:	CQE Eng:	N/A
<b>Importer: (Applies to TMC Shipments Only)</b>	Deliver to:	住所 :	
Mr. N. Okumura, Chief Expert Quality Div. Warranty Parts Room TOYOTA MOTOR CORPORATION 1 Toyota, Toyota-city, Aichi, 471-8571 Japan	Attn:	宛先 :	
	Tel:	Tel:	

T-STAR		
--------	--	--

Note: If this FTR contains more than one VIN, create a table in the report containing VIN, production date, and odometer

FOR CUSTOMS USE:  
Used Parts Value

	Part # 1:	Part Description	Qty.	Used Part Value
1	8966102D20	COMPUTER, ENGINE CONTROL	1	\$ 1.00
	Comments:			
2	Part # 2:	Part Description	Qty.	Used Part Value
			0	\$ 0.00
	Comments:			
3	Part # 3:	Part Description	Qty.	Used Part Value
			0	\$ 0.00
	Comments:			
4	Part # 4:	Part Description	Qty.	Used Part Value
				\$ .00
	Comments:			
5	Part # 5:	Part Description	Qty.	Used Part Value
				\$ .00
	Comments:			
6	Part # 6:	Part Description	Qty.	Used Part Value
				\$ .00
	Comments:			
7	Part # 7:	Part Description	Qty.	Used Part Value
				\$ .00
	Comments:			
8	Part # 8:	Part Description	Qty.	Used Part Value
				\$ .00
	Comments:			



**20070825900160**

TQCN DOC# <b>FTR-3KE123671</b>		Affiliate TMS	Dept. QA-Powertrain	Source FTS	Location TMS-NY	Ref 41990-1	Date 8/24/2007
Problem Area Base Vehicle	Primary Model Corolla	Model Year 2007	Production Date 20-Apr-2007	Odometer 1477 mi	VIN (confirm 17 characters): 2T1BR32E17C [REDACTED]		
Condition Title Engine stall stop and go condition							

Do not type in YELLOW shaded fields - Input data from Web page or RDM:

Repair Date 10-JUL-2007	Optional Ref.	Optional Approval
----------------------------	---------------	-------------------

Condition Description

- Customer states engine stalls in stop and go traffic condition.

Diagnostic Steps:

1. Technician inspected and verified the customer's concern.
2. Technician performed fuel pressure test.
3. Technician found fuel pressure holding at 40PSI-engine off.
4. FTS checked fuel pump assembly and found that resistance of fuel pump is 0.9 ohm.  
(Spec : 0.2 – 3.0 ohm )

Probable Cause

Unknown

Part # 1: 7702002181	Part # 2:	Part # 3:	Parts Disposition: Have part / will ship	Parts Shipping Destination: CQEC
-------------------------	-----------	-----------	---	-------------------------------------

Repair Process

The technician replaced the to remedy the condition  
Part was shipped UPS for further quality evaluation purposes to TMS  
UPS tracking # 1Z 4X4 15X 06 3202 0842.



P/N 77020-02181  
KA292010-5520  
4 J 11 037

Attachment 1: PRCS

TQCN DOC# <b>FTR-3KE123671</b>	Affiliate TMS	Dept. QA-Powertrain	Source FTS	Location TMS-NY	Ref 41990-1	Date 8/24/2007
Problem Area Base Vehicle	Primary Model Corolla	Model Year 2007	Production Date 20-Apr-2007	Odometer 1477 mi	VIN (confirm 17 characters): 2T1BR32E17C [REDACTED]	
Condition Title Engine stall stop and go condition						

Attachment 1: **Parts Recovery Control Sheet**

Orig Tracking

VIN

Doc No.



Do not type in SHADED fields. If the **Final Destination** field below is "scrap", properly dispose of the part.

<b>Final Destination:</b> CQEC	SETR#:	CQE Eng:	N/A
<b>Importer: (Applies to TMC Shipments Only)</b>	Deliver to:	住所 :	
Mr. N. Okumura, Chief Expert Quality Div. Warranty Parts Room TOYOTA MOTOR CORPORATION 1 Toyota, Toyota-city, Aichi, 471-8571 Japan	Attn:	宛先 :	
	Tel:	Tel:	

T-STAR		
--------	--	--

Note: If this FTR contains more than one VIN, create a table in the report containing VIN, production date, and odometer

FOR CUSTOMS USE:  
Used Parts Value

	Part # 1:	Part Description	Qty.	Used Part Value
1	7702002181	TUBE ASSY, FUEL SUCTION W/PUMP & GAGE	1	\$ 117 .00
	Comments:			
2	Part # 2:	Part Description	Qty.	Used Part Value
			0	\$ 0 .00
	Comments:			
3	Part # 3:	Part Description	Qty.	Used Part Value
			0	\$ 0 .00
	Comments:			
4	Part # 4:	Part Description	Qty.	Used Part Value
				\$ .00
	Comments:			
5	Part # 5:	Part Description	Qty.	Used Part Value
				\$ .00
	Comments:			
6	Part # 6:	Part Description	Qty.	Used Part Value
				\$ .00
	Comments:			
7	Part # 7:	Part Description	Qty.	Used Part Value
				\$ .00
	Comments:			
8	Part # 8:	Part Description	Qty.	Used Part Value
				\$ .00
	Comments:			

**20070913900220**

TQCN DOC# <b>FTR-50E424371</b>		Affiliate TMS	Dept. QA-Powertrain	Source FTS	Location TMS-PT	Ref 42416-1	Date 9/12/2007
Problem Area Base Vehicle	Primary Model CorollaNUMMI	Model Year 2007	Production Date 27-Mar-2007	Odometer 327 mi	VIN (confirm 17 characters): 1NXBR30EX7Z [REDACTED]		
Condition Title 1ZZ-FE Loose crankshaft pulley bolt							

Do not type in YELLOW shaded fields - Input data from Web page or RDM:

Repair Date 31-AUG-2007	Optional Ref.	Optional Approval
----------------------------	---------------	-------------------

Condition Description

- The owner complained that the engine would intermittently stall while waiting at a traffic signal.

Diagnostic Steps:

- The condition was duplicated.
- A knocking noise was noticed coming from the front of the engine.
- No MIL or DTCs were present.
- The crankshaft pulley was found to be loose on the crankshaft.
- The loose pulley caused the pulley to crack and the woodruff key slot in the crankshaft to be damaged.

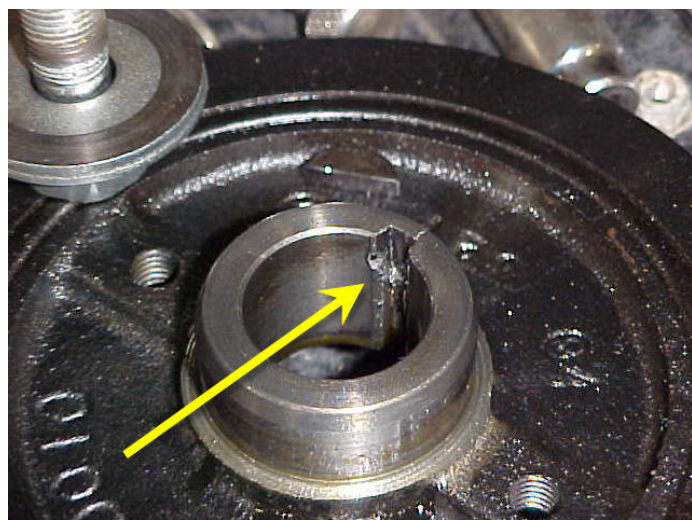
Probable Cause

Unknown.

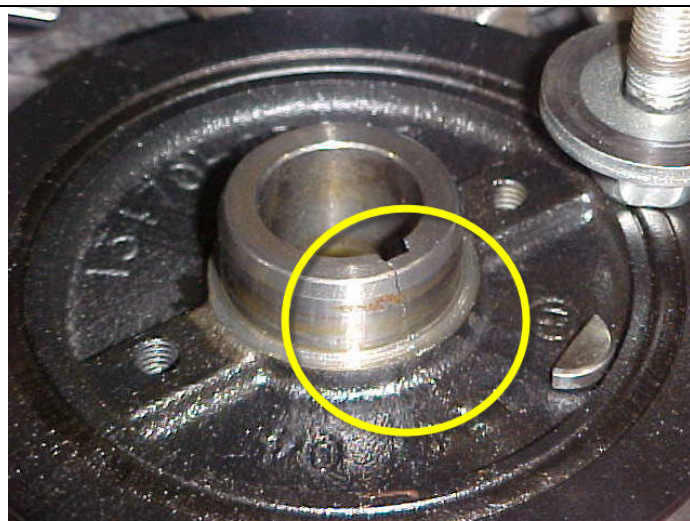
Part # 1: 9011912127	Part # 2:	Part # 3:	Parts Disposition: Special request only	Parts Shipping Destination: N/A
-------------------------	-----------	-----------	--	------------------------------------

Repair Process

Because of the low mileage on this vehicle the engine short block assembly and crankshaft pulley were replaced to correct the condition.



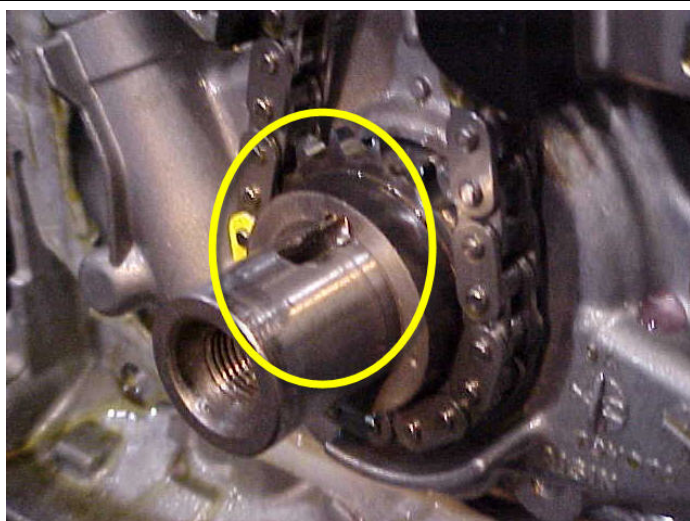
**Internal damage to crankshaft pulley keyway**



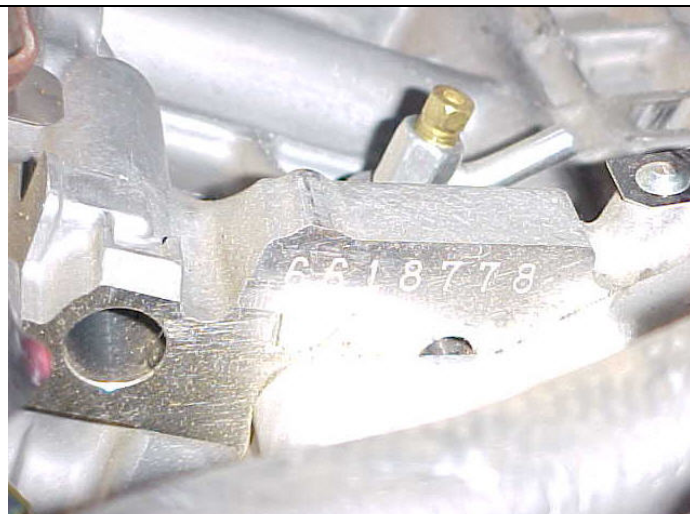
**Crack in crankshaft pulley.**



TQCN DOC# <b>FTR-50E424371</b>	Affiliate TMS	Dept. QA-Powertrain	Source FTS	Location TMS-PT	Ref 42416-1	Date 9/12/2007
Problem Area Base Vehicle	Primary Model CorollaNUMMI	Model Year 2007	Production Date 27-Mar-2007	Odometer 327 mi	VIN (confirm 17 characters): 1NXBR30EX7Z [REDACTED]	
Condition Title 1ZZ-FE Loose crankshaft pulley bolt						



**This shows the damage to the front of the crankshaft.**



**Cylinder block serial number - 6618778**



**The I.D. tag from the cylinder block. Reads N1ZZ-E85ZN ++ 213**



**Date stamp from cylinder block - DEC 21 PM**

**20071120130110**

TQCN DOC# <b>FTR-50E424371</b>		Affiliate TMS	Dept. QA-Powertrain	Source FTS	Location TMS-PT	Ref 42416-1	Date 9/12/2007
Problem Area Base Vehicle	Primary Model CorollaNUMMI	Model Year 2007	Production Date 27-Mar-2007	Odometer 327 mi	VIN (confirm 17 characters): 1NXBR30EX7Z [REDACTED]		
Condition Title 1ZZ-FE Loose crankshaft pulley bolt							

Attachment 1: PRCS

Attachment 1: **Parts Recovery Control Sheet**

Orig Tracking

VIN

Doc No.



Do not type in SHADED fields. If the **Final Destination** field below is "scrap", properly dispose of the part.

<b>Final Destination:</b> N/A		SETR#:	CQE Eng:	N/A
<b>Importer: (Applies to TMC Shipments Only)</b>		Deliver to:		住所 :
Mr. N. Okumura, Chief Expert Quality Div. Warranty Parts Room TOYOTA MOTOR CORPORATION 1 Toyota, Toyota-city, Aichi, 471-8571 Japan		Attn:		宛先 :
		Tel:		Tel:
T-STAR				
Note: If this FTR contains more than one VIN, create a table in the report containing VIN, production date, and odometer				FOR CUSTOMS USE: Used Parts Value
<b>1</b>	Part # 1: 9011912127	Part Description BOLT, W/WASHER	Qty. 1	Used Part Value \$ 1 .00
	Comments:			



TQCN DOC# <b>FTR-VEE131971B</b>		Affiliate TMS	Dept. QA-Powertrain	Source FPE	Location TMS-NY	Ref 42281-1	Date 11/19/2007
Problem Area Base Vehicle	Primary Model Corolla	Model Year 2006	Production Date 05-May-2006	Odometer 19663 mi	VIN (confirm 17 characters): 2T1BR32E46C [REDACTED]		
Condition Title Engine stalls out at times							

Do not type in YELLOW shaded fields - Input data from Web page or RDM:

Repair Date 15-NOV-2007	Optional Ref.	Optional Approval
----------------------------	---------------	-------------------

**Condition Description**

Customer states engine stalls out at times.

**Diagnostic Steps:**

Technician verified the customer's complaint and upon further diagnosis found the partially broken wire for the throttle control motor connector, T6 / E-2 / pin#3

**Probable Cause**

Unknown

Part # 1: N/A	Part # 2:	Part # 3:	Parts Disposition: No part available	Parts Shipping Destination: N/A
------------------	-----------	-----------	---	------------------------------------

**Repair Process**

The technician repaired the wire to remedy the condition.

Broken wire



Attachment 1: PRCS

**20080709900180**

TQCN DOC# <b>FTR-VEE131971B</b>		Affiliate TMS	Dept. QA-Powertrain	Source FPE	Location TMS-NY	Ref 42281-1	Date 11/19/2007
Problem Area Base Vehicle	Primary Model Corolla	Model Year 2006	Production Date 05-May-2006	Odometer 19663 mi	VIN (confirm 17 characters): 2T1BR32E46C [REDACTED]		
Condition Title Engine stalls out at times							

Attachment 1: **Parts Recovery Control Sheet**

Do not type in SHADED fields. If the **Final Destination** field below is "scrap", properly dispose of the part.

Orig Tracking

VIN

Doc No.



<b>Final Destination:</b> N/A	SETR#:	CQE Eng:	N/A
<b>Importer: (Applies to TMC Shipments Only)</b>	Deliver to:	住所 :	
Mr. N. Okumura, Chief Expert Quality Div. Warranty Parts Room TOYOTA MOTOR CORPORATION 1 Toyota, Toyota-city, Aichi, 471-8571 Japan	Attn:	宛先 :	
	Tel:	Tel:	

T-STAR		
--------	--	--

Note: If this FTR contains more than one VIN, create a table in the report containing VIN, production date, and odometer

FOR CUSTOMS USE:  
Used Parts Value

	Part # 1:	Part Description	Qty.	Used Part Value
1	N/A		1	\$ 0 .00
	Comments:			
2	Part # 2:	Part Description	Qty.	Used Part Value
			0	\$ 0 .00
	Comments:			
3	Part # 3:	Part Description	Qty.	Used Part Value
			0	\$ 0 .00
	Comments:			
4	Part # 4:	Part Description	Qty.	Used Part Value
				\$ .00
	Comments:			
5	Part # 5:	Part Description	Qty.	Used Part Value
				\$ .00
	Comments:			
6	Part # 6:	Part Description	Qty.	Used Part Value
				\$ .00
	Comments:			
7	Part # 7:	Part Description	Qty.	Used Part Value
				\$ .00
	Comments:			
8	Part # 8:	Part Description	Qty.	Used Part Value
				\$ .00
	Comments:			

TQCN DOC# <b>TQCN_FTR-081820011</b>		Affiliate TMS	Dept. QAPowertrain	Source PE	Location TMS	Ref 80274851	Date 07/08/2008
Problem Area Base Vehicle	Primary Model Matrix	Model Year 2007	Production Date 2006-11-18	Odometer 14,714 km	VIN (confirm 17 characters): 2T1KR32E07C [REDACTED]		
Condition Title MIL ON P0607 - Engine Stalls							

Do not type in **YELLOW** shaded fields – This data is auto-populated from the TQCN system:

Repair Date 4/18/2008	Optional Ref.	Optional Approval
--------------------------	---------------	-------------------

**Condition Description**

Customer states the engine stalls and the check engine light is on

**Diagnostic Steps:**

1. Technician verified customer concerned and performed a health check with the Techstream.
2. DTC P0607 – ECM Internal Malfunction, was stored
3. Technician found TSB EG042-07 which is applicable to the U.S. market.

**Probable Cause**

Internal ECM malfunction

Part # 1: 8966102K70	Part # 2:	Part # 3:	Parts Disposition: Part(s) Available	Parts Shipping Destination: CQE
-------------------------	-----------	-----------	---	------------------------------------

**Repair Process**

Replaced ECM



ECM part number 89661-02K70

TQCN DOC# <b>TQCN_FTR-081820011</b>	Affiliate TMS	Dept. QAPowertrain	Source PE	Location TMS	Ref 80274851	Date 07/08/2008
Problem Area Base Vehicle	Primary Model Matrix	Model Year 2007	Production Date 2006-11-18	Odometer 14,714 km	VIN (confirm 17 characters): 2T1KR32E07C [REDACTED]	
Condition Title MIL ON P0607 - Engine Stalls						

Attachment 1: **Parts Recovery Control Sheet**

Orig Tracking

VIN

Doc No.



Do not type in SHADED fields. If the **Final Destination** field below is "scrap", properly dispose of the part.

<b>Final Destination:</b>	CQE	SETR#:		CQE Eng:	N/A
<b>Importer: (Applies to TMC Shipments Only)</b>	Deliver to:		住所 :		
Mr. N. Okumura, Chief Expert Quality Div. Warranty Parts Room TOYOTA MOTOR CORPORATION 1 Toyota, Toyota-city, Aichi, 471-8571 Japan	Attn:		宛先 :		
	Tel:		Tel:		

T-STAR		
--------	--	--

Note: If this FTR contains more than one VIN, create a table in the report containing VIN, production date, and odometer

FOR CUSTOMS USE: Used Parts Value

	Part #	Part Description	Qty.	Used Part Value Each
1	8966102K70	COMPUTER, ENGINE CONTROL	1	\$ 114.66
	Comments:			
2				\$
	Comments:			
3				\$
	Comments:			
4				\$
	Comments:			
5				\$
	Comments:			
6				\$
	Comments:			
7				\$
	Comments:			