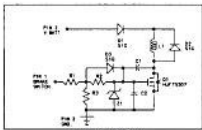
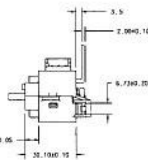
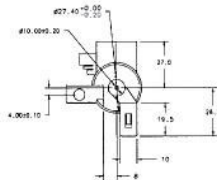
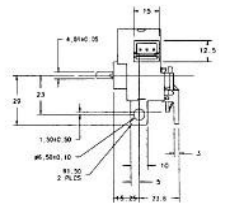
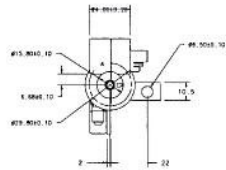
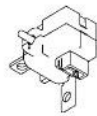
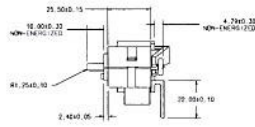
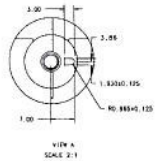


80-7017



ITEM	DESCRIPTION
1	SOLENOID
2	SOLENOID
3	SOLENOID
4	SOLENOID
5	SOLENOID
6	SOLENOID
7	SOLENOID
8	SOLENOID
9	SOLENOID
10	SOLENOID
11	SOLENOID
12	SOLENOID
13	SOLENOID
14	SOLENOID
15	SOLENOID
16	SOLENOID
17	SOLENOID
18	SOLENOID
19	SOLENOID
20	SOLENOID
21	SOLENOID
22	SOLENOID
23	SOLENOID

THIS DRAWING IS THE PROPERTY OF PONTIAC CALIF. INC. IT IS TO BE USED ONLY FOR THE PURPOSES SPECIFIED HEREIN. IT IS NOT TO BE REPRODUCED OR TRANSMITTED IN ANY FORM OR BY ANY MEANS, ELECTRONIC OR MECHANICAL, INCLUDING PHOTOCOPYING, RECORDING, OR BY ANY INFORMATION STORAGE AND RETRIEVAL SYSTEM. WITHOUT THE WRITTEN PERMISSION OF PONTIAC CALIF. INC.

- NOTES:
- SOLENOID TRAVEL MUST BE 3.0mm MIN.
 - SOLENOID MUST BE FUNCTIONAL AFTER 1000 CYCLES. (TRAVEL IS ALLOWED FOR 10 MINUTES)
 - SOLENOID EQUIVALENT RESISTANCE SHOULD BE 4.5 OHM AT 20°C
 - CURRENT DRAW MUST BE LESS THAN 1000mA WHICH TRAVEL IS APPLIED AT 20°C
 - PART MUST CONFORM TO VEHICLE SPECIFICATION (30-122-200-000)
 - THE TRAVEL MUST BE 3.0mm MIN. (30-122-200-000)
 - FOR ACTIVATION OF RELAY ACTION OF THE SOLENOID, THE TRAVEL MUST NOT EXCEED THE AREA. THE TRAVEL SHALL BE MEASURED USING A DEER FIELD MICROSCOPE PLACED AT A DISTANCE OF 300mm.
 - MEASUREMENT TO THE AREA OF THE PLATE MUST BE WITHIN THE LENGTH OF THE TRAVEL AND MUST SPECIFY THE ATTACHMENT TAG ON THE COVER THAT HAS THE TRAVEL. THE BACKGROUND TRAVEL LEVEL TO BE LESS THAN 20 MICRA. TRAVEL IS CORRECTED AT THE TOP OF THE COVER ON THE SIDE AND IS PLACED IN THE CENTER OF THE COVER. TRAVEL IS CORRECTED USING MICRO.
 - USE BETA SERVICE P/N 1L2C-3F770-DA

DATE	1.1	REV	0.0	DO NOT SCALE
STEERING COLUMN U152 SOLENOID ONLY				
80-7017				
A				



PART MUST COMPLY WITH MIL-STD-1316 MATERIALS SPECIFICATION. THIS IS A MIL-STD-1316 TYPE PART. MATERIAL SPECIFICATIONS SHOULD BE REVIEWED BY THE RELEASING ENGINEER & THE AFFECTED MATERIALS ENGINEERING ACTIVITY, RETAINED BY THE SUPPLIER AND AVAILABLE FROM MIL-STD-1316.

CHANGES AFFECTING DESIGN, COMPOSITION OR PROCESSING OF THE PART PREVIOUSLY APPROVED FOR PRODUCTION REQUIRE PRIOR APPROVAL FROM PONTIAC MOTOR COMPANY PRODUCT ENGINEERING. REFER TO 30-1000.

FOR CURRENT RELEASE STATUS SEE THE NEWS ENGINEERING NOTICE.

REDUCE CONVENT. DETAIL, DIMENSIONS AND LEAD ARE SAME AS DRAWING FOR LEADERS. ALL CAD DATA IS BEING MAINTAINED IN THE CAD FILE. ALL DIMENSIONS TO BE TAKEN FROM THE CAD FILE. ALL DIMENSIONS MUST BE TAKEN FROM THE CAD FILE. ALL DIMENSIONS MUST BE TAKEN FROM THE CAD FILE. ALL DIMENSIONS MUST BE TAKEN FROM THE CAD FILE.

CONFORM TO SERVICE PARTS MUST COMPLY WITH PONTIAC CUSTOMER SERVICE DIVISION (PSC) PACKAGING AND SHIPPING GUIDE.

DATE	1.1	REV	0.0	DO NOT SCALE
STEERING COLUMN U152 SOLENOID ONLY				
80-7017				
A				

DATE	1.1	REV	0.0	DO NOT SCALE
STEERING COLUMN U152 SOLENOID ONLY				
80-7017				
A				

DATE	1.1	REV	0.0	DO NOT SCALE
STEERING COLUMN U152 SOLENOID ONLY				
80-7017				
A				

DATE	1.1	REV	0.0	DO NOT SCALE
STEERING COLUMN U152 SOLENOID ONLY				
80-7017				
A				

DATE	1.1	REV	0.0	DO NOT SCALE
STEERING COLUMN U152 SOLENOID ONLY				
80-7017				
A				

DATE	1.1	REV	0.0	DO NOT SCALE
STEERING COLUMN U152 SOLENOID ONLY				
80-7017				
A				

DATE	1.1	REV	0.0	DO NOT SCALE
STEERING COLUMN U152 SOLENOID ONLY				
80-7017				
A				

DATE	1.1	REV	0.0	DO NOT SCALE
STEERING COLUMN U152 SOLENOID ONLY				
80-7017				
A				

DATE	1.1	REV	0.0	DO NOT SCALE
STEERING COLUMN U152 SOLENOID ONLY				
80-7017				
A				

DATE	1.1	REV	0.0	DO NOT SCALE
STEERING COLUMN U152 SOLENOID ONLY				
80-7017				
A				

DATE	1.1	REV	0.0	DO NOT SCALE
STEERING COLUMN U152 SOLENOID ONLY				
80-7017				
A				

DATE	1.1	REV	0.0	DO NOT SCALE
STEERING COLUMN U152 SOLENOID ONLY				
80-7017				
A				

DATE	1.1	REV	0.0	DO NOT SCALE
STEERING COLUMN U152 SOLENOID ONLY				
80-7017				
A				

DATE	1.1	REV	0.0	DO NOT SCALE
STEERING COLUMN U152 SOLENOID ONLY				
80-7017				
A				

DATE	1.1	REV	0.0	DO NOT SCALE
STEERING COLUMN U152 SOLENOID ONLY				
80-7017				
A				

DATE	1.1	REV	0.0	DO NOT SCALE
STEERING COLUMN U152 SOLENOID ONLY				
80-7017				
A				

DATE	1.1	REV	0.0	DO NOT SCALE
STEERING COLUMN U152 SOLENOID ONLY				
80-7017				
A				

DATE	1.1	REV	0.0	DO NOT SCALE
STEERING COLUMN U152 SOLENOID ONLY				
80-7017				
A				

DATE	1.1	REV	0.0	DO NOT SCALE
STEERING COLUMN U152 SOLENOID ONLY				
80-7017				
A				

DATE	1.1	REV	0.0	DO NOT SCALE
STEERING COLUMN U152 SOLENOID ONLY				
80-7017				
A				

DATE	1.1	REV	0.0	DO NOT SCALE
STEERING COLUMN U152 SOLENOID ONLY				
80-7017				
A				

DATE	1.1	REV	0.0	DO NOT SCALE
STEERING COLUMN U152 SOLENOID ONLY				
80-7017				
A				

DATE	1.1	REV	0.0	DO NOT SCALE
STEERING COLUMN U152 SOLENOID ONLY				
80-7017				
A				

DATE	1.1	REV	0.0	DO NOT SCALE
STEERING COLUMN U152 SOLENOID ONLY				
80-7017				
A				

DATE	1.1	REV	0.0	DO NOT SCALE
STEERING COLUMN U152 SOLENOID ONLY				
80-7017				
A				

DATE	1.1	REV	0.0	DO NOT SCALE
STEERING COLUMN U152 SOLENOID ONLY				
80-7017				
A				

DATE	1.1	REV	0.0	DO NOT SCALE
STEERING COLUMN U152 SOLENOID ONLY				
80-7017				
A				

DATE	1.1	REV	0.0	DO NOT SCALE
STEERING COLUMN U152 SOLENOID ONLY				
80-7017				
A				

DATE	1.1	REV	0.0	DO NOT SCALE
STEERING COLUMN U152 SOLENOID ONLY				
80-7017				
A				

DATE	1.1	REV	0.0	DO NOT SCALE
STEERING COLUMN U152 SOLENOID ONLY				
80-7017				
A				

DATE	1.1	REV	0.0	DO NOT SCALE
STEERING COLUMN U152 SOLENOID ONLY				
80-7017				
A				

DATE	1.1	REV	0.0	DO NOT SCALE
STEERING COLUMN U152 SOLENOID ONLY				
80-7017				
A				

DATE	1.1	REV	0.0	DO NOT SCALE
STEERING COLUMN U152 SOLENOID ONLY				
80-7017				
A				

DATE	1.1	REV	0.0	DO NOT SCALE
STEERING COLUMN U152 SOLENOID ONLY				
80-7017				
A				

DATE	1.1	REV	0.0	DO NOT SCALE
STEERING COLUMN U152 SOLENOID ONLY				
80-7017				
A				

DATE	1.1	REV	0.0	DO NOT SCALE
STEERING COLUMN U152 SOLENOID ONLY				
80-7017				
A				

DATE	1.1	REV	0.0	DO NOT SCALE
STEERING COLUMN U152 SOLENOID ONLY				
80-7017				
A				

DATE	1.1	REV	0.0	DO NOT SCALE
STEERING COLUMN U152 SOLENOID ONLY				
80-7017				
A				

DATE	1.1	REV	0.0	DO NOT SCALE
STEERING COLUMN U152 SOLENOID ONLY				
80-7017				
A				

DATE	1.1	REV	0.0	DO NOT SCALE
STEERING COLUMN U152 SOLENOID ONLY				
80-7017				
A				

DATE	1.1	REV	0.0	DO NOT SCALE
STEERING COLUMN U152 SOLENOID ONLY				
80-7017				
A				

DATE	1.1	REV	0.0	DO NOT SCALE
STEERING COLUMN U152 SOLENOID ONLY				
80-7017				
A				

DATE	1.1	REV	0
------	-----	-----	---

Erwin Webel
Product Engineer
Timmeron Brass Metal
and Plastic Fasteners

Eaton Corporation
Engineered Fasteners Division
240 - 6th Street N.W.
Massillon, OH 44647
330/ 830-7512

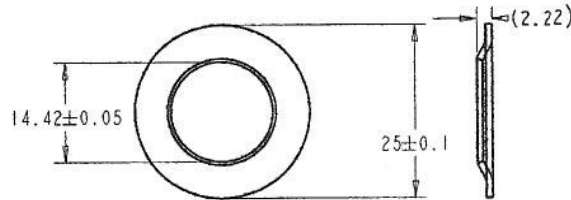


"NOTICE TO PERSONS RECEIVING THIS DRAWING AND/OR TECHNICAL INFORMATION"

EATON CORPORATION CLAIMS PROPERTY RIGHTS TO THE MATERIAL DISCLOSED HEREIN. THIS DRAWING AND/OR TECHNICAL INFORMATION IS USED IN CONFIDENCE FOR ENGINEERING INFORMATION ONLY AND MAY NOT BE REPRODUCED OR USED TO MANUFACTURE ANYTHING SIMILAR OR HELD TO BEYOND WITHOUT DIRECT WRITTEN PERMISSION FROM EATON CORPORATION TO THE USER. THIS DRAWING AND/OR TECHNICAL INFORMATION IS THE PROPERTY OF EATON CORPORATION AND IS LOANED FOR METAL ASSISTANCE TO BE RETURNED WHEN ITS PURPOSE HAS BEEN SERVED.

THIS DRAWING AND/OR TECHNICAL INFORMATION IS THE PROPERTY OF EATON CORPORATION.

- NOTE 1: ALL DIMENSIONS ARE FOR REFERENCE ONLY. PART TO BE FURTHER DEVELOPED IN PROTO-TYPE.
- NOTE 2: 5.44 lbs./1000
- NOTE 3: EATON -4 FINISH - ZINC PHOSPHATE + OIL DIP
- NOTE 4: FOR 14.62 MM Ø SHAFT
- NOTE 5: Minimum Retention: 500 Lbs.



PLEASE SIGN OFF AS SOON AS POSSIBLE TO AVOID DELAYING TOOL BUILD

SIGN: _____
DATE: _____

Tool Design Approval _____



SCALE NONE	MATERIAL .94 MM THICK SAE J403.1050-1075	Q15187-004
DATE 3/23/99		

-7224-

CHANGES AFFECTING DESIGN, COMPOSITION OR PROCESSING OF THE PART PREVIOUSLY APPROVED FOR PRODUCTION REQUIRE PRIOR APPROVAL FROM FORD PRODUCT ENGINEERING, REFER TO QS-9000

FOR CURRENT RELEASE STATUS SEE WERS ENGINEERING NOTICE

MANUFACTURER TO ESTABLISH PRODUCT ENGINEERING APPROVED CONTROL PLAN

CORROSION PROTECTION FOR SERVICE PARTS MUST COMPLY WITH FORD CUSTOMER SERVICE DIVISION (FCSD) PACKAGING AND SHIPPING GUIDE

LTRS	REVISIONS		
ORIGINATOR	CHECKER	ENGR APP	MATL APP
RELEASED WCOO-E-10948866-000	990507		
SETTER	RSKONIEC	KPRZEBIE	LK 990507b

RS *KPrzybinda*
990511



THIS DRAWING AND ANY INTELLECTUAL PROPERTY RIGHTS THEREIN ARE PROPERTY OF VISTEON AUTOMOTIVE SYSTEMS AND NO LICENSES ARE GRANTED UNDER THOSE RIGHTS

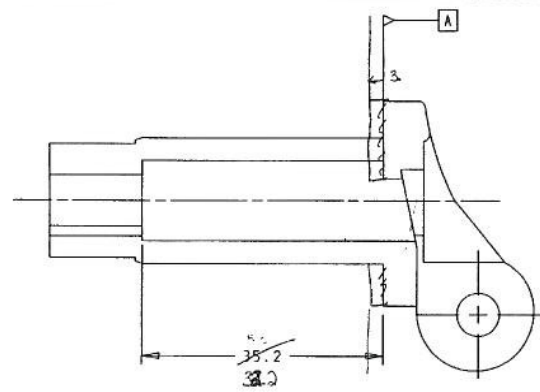
REFERENCE			
PART MUST COMPLY WITH MATERIAL SPECIFICATION WSS-M99P9999-A1 TO HELP SAFEGUARD HEALTH, SAFETY AND THE ENVIRONMENT			
DRAFTED IN ACCORDANCE WITH F40 ENGINEERING DRAFTING STANDARD CURRENT AT INITIAL RELEASE		3RD ANGLE PROJ DIMENSIONS IN MILLIMETERS	
CAD TYPE S-IDEAS	CAD LOC METAPH	CAD FILE CPSC #110401 112C-7224-AB	IS MASTER
OPER. NO	UNIT	DRAWING 112C-7224-AB	
DESIGN	DETAIL	TITLE RET -TRANS GEAR SHIFT LEVER SOCKET	SHT 1 OF 1
CHECKED	SAFETY		
SCALE	DATE 990429	DIVISION B875 PLANT	Visteon

DRW SIZE A27C

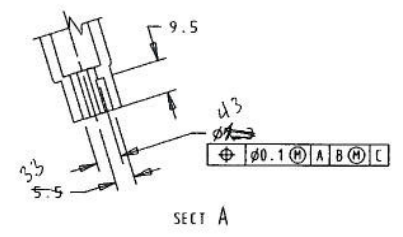
REVISIONS			
ORIGINATOR	CHECKER	ENGR APP	MATL APP
RELEASED 1L2C-7228-AB			
WC00-E-10902767-000		981208	
PBUOZYN1	BBOWLING	KPRAZEBIE	

Revised for *Study*
 Marked for *Study* (10/02/01)
 CX Release WC00-E-10902767
Rydzbande
 9812/08

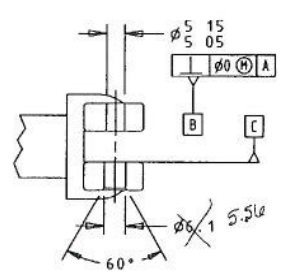
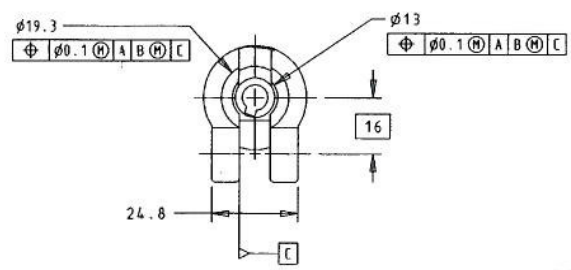
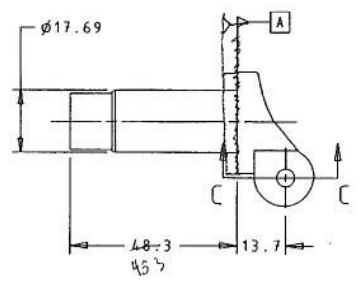
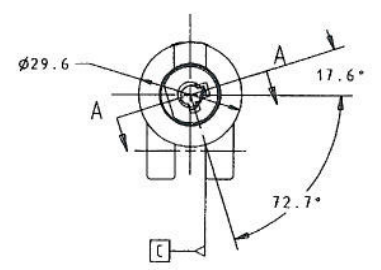
PRELIMINARY
 INFORMATION
 UNCHECKED



SECT B



SECT A



CHANGES AFFECTING DESIGN, COMPOSITION OR PROCESSING OF THE PART PREVIOUSLY APPROVED FOR PRODUCTION REQUIRE PRIOR APPROVAL FROM FORD PRODUCT ENGINEERING, REFER TO QS-9000 ENGINEERING NOTICE

FOR CURRENT RELEASE STATUS SEE WERS ENGINEERING NOTICE

MANUFACTURER TO ESTABLISH PRODUCT ENGINEERING APPROVED CONTROL PLAN

CORROSION PROTECTION FOR SERVICE PARTS MUST COMPLY WITH FORD CUSTOMER SERVICE DIVISION (FCSO) PACKAGING AND SHIPPING GUIDE


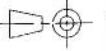
MATERIAL SAE J469 UNS Z 33520 ZINC ALLOY
 UNLESS OTHERWISE SPECIFIED -
 DIMENSION ± 0.1
 ANGULAR DIM $\pm 2^\circ$
 MUST BE FREE OF BURRS AND SHARP EDGES

THIS DRAWING AND ANY INTELLECTUAL PROPERTY RIGHTS THEREIN ARE PROPERTY OF VISTEON AUTOMOTIVE SYSTEMS AND NO LICENSES ARE GRANTED UNDER THOSE RIGHTS

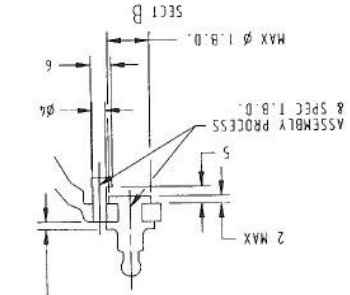
REFERENCE			
PART MUST COMPLY WITH MATERIAL SPECIFICATION WSS-M99P9999-A1 TO HELP SAFEGUARD HEALTH, SAFETY AND THE ENVIRONMENT			
DRAFTED IN ACCORDANCE WITH FORD ENGINEERING DRAFTING STANDARD CURRENT AT INITIAL RELEASE.		3RD ANGLE PROJ DIMENSIONS IN MILLIMETERS	
CAD TYPE S-SORC	CAD LOC. TOM NORWOOD	CAD FILE 110401 1L2C-7228-A	IS MASTER
OPER. NO.	UNIT	DRAWING 1L2C-7228-AB	
DESIGN BBOSMAN	DETAIL PBUOZYN1	TITLE SOCKET-TRANSMISSION CONTROL SELECTOR LEVER	SHT 1 OF 1
CHECKED	SAFETY	NONE	
SCALE 1 1	DATE 980916	DIVISION B875 PLANT	Visteon

DRW SIZE A2/C

DWG SIZE A27C

 <p>THIS DRAWING AND ANY INTELLECTUAL PROPERTY RIGHTS THEREIN ARE PROPERTY OF VISTEON AUTOMOTIVE SYSTEMS AND NO LICENSES ARE GRANTED UNDER THOSE RIGHTS.</p>		REFERENCE
PART MUST COMPLY WITH MATERIAL SPECIFICATION WSS-M999999-A1 TO HELP SAFEGUARD HEALTH, SAFETY AND THE ENVIRONMENT.		
DRAFTED IN ACCORDANCE WITH F40 ENGINEERING DRAFTING STANDARD TO HELP SAFEGUARD HEALTH, SAFETY AND THE ENVIRONMENT.		
 <p>3RD ANGLE PROJ DIMENSIONS IN MILLIMETERS</p>		
CAD TYPE	CAD FILE	CAD LOC.
S-IDEAS	112C-7302-BA	CPSC 110601
IS MASTER		
OPER. NO.	DRAWING	UNIT
112C-7302-BA		
DESIGN	DETAIL	FILE
BOOSMAN	J5INGERA	ARM ASY-TRANSMISSION CONTROL SELECTOR
CHECKED	SAFETY	
BOOWLING		
SCALE	DATE	PLANT
1:1	990408	990408
DIVISION		
0875		
Visteon		

LTRS		REVISIONS
ORIGINATOR	CHECKER	ENGR APP
MATL APP		
RELEASED		
MCD-E-10970866-000		
990507		
ISINGERA	BOOWLING	KPREZBIE
LK990428		
<i>BR</i> <i>K. Kopylov</i> 990507 990511		



DO NOT EXCEED THIS DISTANCE

MATERIAL: SAC 1669 ANS Z 3520 ZINC ALLOY

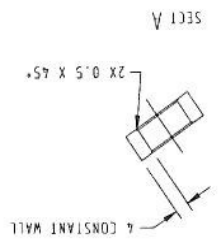
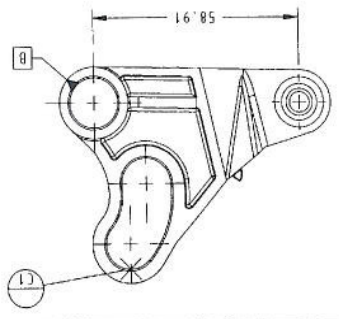
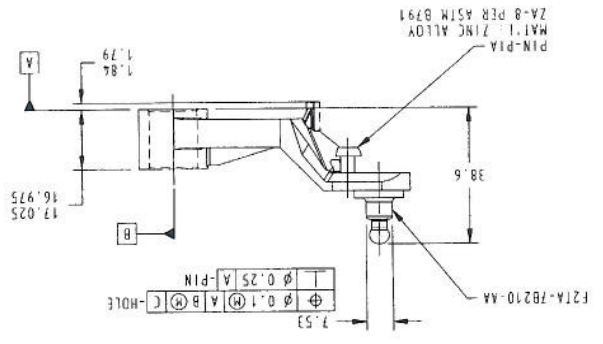
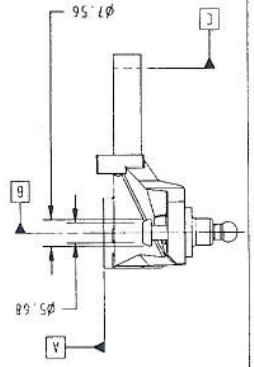
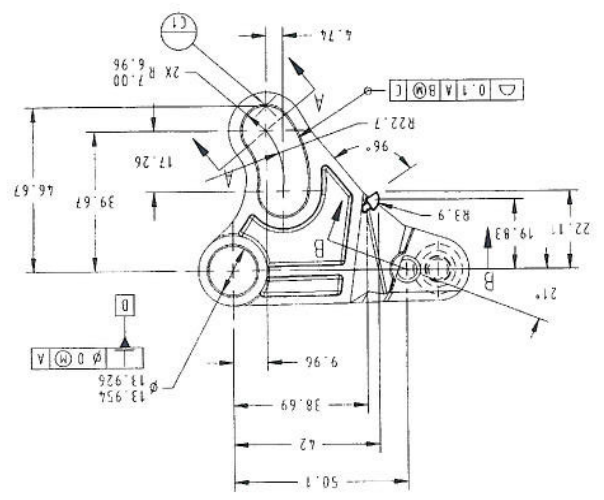
FOR DIMENSION NOT SHOWN SEE 3D CAD FILE 112C-7302-BA ALL GRAPHIC MEASURED DATA IS BASIC UNLESS OTHERWISE SPECIFIED.

ALL DIM ±0.1 ANGULAR DIM ±2.0 UNTOLERANCED DIM F0.1 ALL WALLS & RIDS TO BE 3.0 ±0.5 CORNER RADIUS R 1.5 FILLET RADIUS R 2

CHANGES AFFECTING DESIGN, COMPOSITION OR PROCESSING OF THE PART PREVIOUSLY APPROVED FOR PRODUCTION REQUIRE PRIOR APPROVAL FROM FORD PRODUCT ENGINEERING. REFER TO DS-9000 FOR CURRENT RELEASE STATUS SEE WEBS FOR CURRENT RELEASE NOTICE

MANUFACTURER TO ESTABLISH PRODUCT ENGINEERING APPROVED CONTROL PLAN

CORROSION PROTECTION FOR SERVICE PARTS MUST COMPLY WITH FORD CUSTOMER SERVICE DIVISION (FCSD) PACKAGING AND SHIPPING GUIDE



Approval Drawing:	Customer: VISTEON	
<ul style="list-style-type: none"> * NO SCALE * DIMENSIONS IN mm * PTFE ON BORE 		
<p>REF O.D. DIMENSION "GO" GAGE 18.65 "NO GO" GAGE 18.57</p> <p>REF I.D. DIMENSION "GO" PLUG GAGE 17.62 "NO GO" PLUG GAGE 17.70</p> <p>WHEN MOUNTED IN A 18.65 RING GAGE</p>		
Revisions: REV A: FLANGE WAS 24.2; CLR WAS -0.10/0.10; CUST PART # ADDED RJT 9/23/98	Material: Norglide R TO.5	
	Set Up Ref:	
	Customer P/N: 1L2C-7335-AB	
Notes:	Bearing P/N:	
	Drawing No.: F98-2111 Rev.: A	
Application: EXPLORER SHIFT MECHANISM Shaft: 17.55/17.65 Housing: 18.65/18.75 Plating: NONE Clearance: 0.00/+0.20 Slit No.		
Drawn By: R. TAYLOR	Checked:	Date: 2/26/98

Form:brg 4.41.0.2 (7/97)


CHANGES AFFECTING DESIGN, COMPOSITION OR PROCESSING OF THE PART PREVIOUSLY APPROVED FOR PRODUCTION REQUIRE PRIOR APPROVAL FROM FORD PRODUCT ENGINEERING. REFER TO QS-9000

CORROSION PROTECTION FOR SERVICE PARTS MUST COMPLY WITH FORD CUSTOMER SERVICE DIVISION (FCSD) PACKAGING AND SHIPPING GUIDE

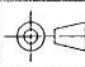
FOR CURRENT RELEASE STATUS SEE WERS ENGINEERING NOTICE

MANUFACTURER TO ESTABLISH PRODUCT ENGINEERING APPROVED CONTROL PLAN

LTRS	REVISIONS		
ORIGINATOR	CHECKER	ENGR APP	MATL APP
RELEASED			
WCOO-E-10902767-000() 981208			CAD: Y
JSINGER4	<i>Jensel/98009</i>	KPRZEBIE	LX990209
#P 990212			



THIS DRAWING AND ANY INTELLECTUAL PROPERTY RIGHTS THEREIN ARE PROPERTY OF VISTEON AUTOMOTIVE SYSTEMS AND NO LICENSES ARE GRANTED UNDER THOSE RIGHTS

REFERENCE			
PART MUST COMPLY WITH MATERIAL SPECIFICATION WSS-M99P9999-A1 TO HELP SAFEGUARD HEALTH, SAFETY AND THE ENVIRONMENT.			
DRAFTED IN ACCORDANCE WITH F40 ENGINEERING DRAFTING STANDARD CURRENT AT INITIAL RELEASE		 3RD ANGLE PROJ DIMENSIONS IN MILLIMETERS	
CAD TYPE F-PDGS	CAD LOC. ACD2	CAD FILE 1L2C-7335-AB	ORIGINAL IS MASTER
OPER. NO.	UNIT	DRAWING 1L2C-7335-AB	
DESIGN BOSMAN	DETAIL JSINGER2	TITLE BUSHING-TRANS CONTROL SELECTOR SHAFT	SHT 1 OF 1
CHECKED	SAFETY		
SCALE N/A	DATE 980925	DIVISION B875 PLANT	Visteon

DRW SIZE A2/C

Approval Drawing		Customer		VISTEON	
<ul style="list-style-type: none"> * NO SCALE * DIMENSIONS IN mm * PTFE ON BORE 					
<p>REF O.D. DIMENSION "GO" GAGE 13.93 "NO GO" GAGE 13.85 REF I.D. DIMENSION "GO" PLUG GAGE 12.90 "NO GO" PLUG GAGE 12.98 WHEN MOUNTED IN A 13.95 RING GAGE</p>					
<p>Revisions REV A FLANGE WAS 19.0, REF GD WAS 13.90, SHAFT WAS 12.95/13.05, CLR WAS -0.10/0.10, CUST PART # ADDED, LENGTH WAS 17.0, GAGING UPDATED RUT 9/23/98</p>					
<p>Notes</p> <p>Material Norglide R 10 5</p> <p>Set Up Ref</p> <p>Customer P/N 112C-7352-AB</p> <p>Bearing P/N</p> <p>Drawing No F98-2112 Rev A</p>					
Application		EXPLORER SHIF MECHANISM			
Sheet		12 83/12 93			
Flashing		13 93/13 96			
Clearance		0.00/+0.13			
Sht No		1			
Drawn By		R TAYLOR			
Checked		Date			
		2/26/98			

Forming 44102 (7/97)

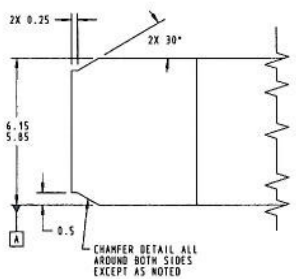
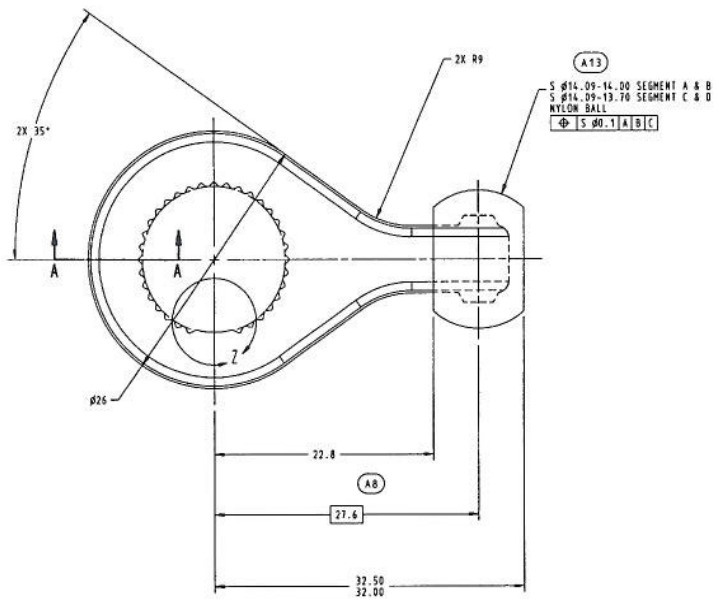
CHANGES AFFECTING DESIGN, COMPOSITION OR PROCESSING OF THE PART PREVIOUSLY APPROVED FOR PRODUCTION REQUIRE PRIOR APPROVAL FROM FORD PRODUCT ENGINEERING. REFER TO 05-9000 CORROSION PROTECTION FOR SERVICE PARTS MUST COMPLY WITH FORD CUSTOMER SERVICE DIVISION (FCSD) PACKAGING AND SHIPPING GUIDE

NOTICE
FOR CURRENT RELEASE STATUS SEE WERS ENGINEERING MANUFACTURER TO ESTABLISH PRODUCT ENGINEERING APPROVED CONTROL PLAN

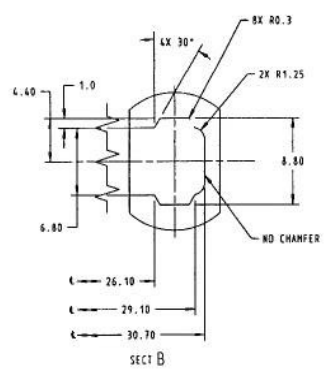
SCALE		N/A	
DATE		980925	
DIVISION		8875	
PLANT		Visteon	
CHECKED		BROSMAN	
SAFETY		BUSHING-TRANS CONTROL	
DESIGN		DETAIL	
OPER. NO.		UNIT	
CAD TYPE		CAD LOC.	
F-PDGS		ACD2	
IS MASTER		CAD FILE	
DRAWING		112C-7352-AB	
TITLE		112C-7352-AB	
SHT 1		OF 1	
DRAFTED IN ACCORDANCE WITH F&O ENGINEERING DRAFTING STANDARD		CURRENT AT INITIAL RELEASE	
3RD ANGLE PROJ DIMENSIONS IN MILLIMETERS		PART MUST COMPLY WITH MATERIAL SPECIFICATION MSS-M99P9999-A1 TO HELP SAFEGUARD HEALTH, SAFETY AND THE ENVIRONMENT.	
REFERENCE		<p>THIS DRAWING AND ANY INTELLECTUAL PROPERTY RIGHTS THEREIN ARE PROPERTY OF VISTEON AUTOMOTIVE SYSTEMS AND NO LICENSES ARE GRANTED UNDER THOSE RIGHTS</p>	

LTRS		REVISIONS	
ORIGINATOR	CHECKER	ENGR APP	MATL APP
RELEASED			
WCOO-E-10902767-000 () 981208			
CAD:Y			
USINGERY		KPRZEBIE	
LK 990209		LK 990209	

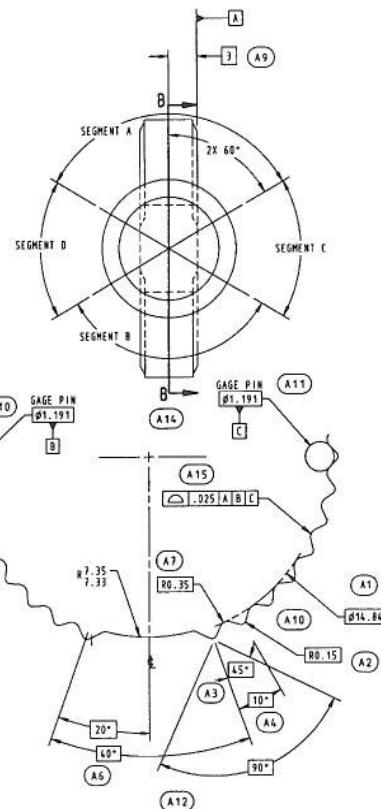
DRW SIZE A27C



SECT A
10:1



SECT B



NUMBER OF TEETH EQUALLY SPACED IN 360 DEGREE 36
 OUTSIDE RADIUS .15
 INSIDE RADIUS .35
 NUMBER OF TEETH REQUIRED 33

VIEW Z
10:1

MATERIAL:
 MPIF FLWC-4408
 6.8 MIN DENSITY (LEVER)
 SAE J1629 PART21
 NYLON 6/6 (BALL)

UNLESS OTHERWISE SPECIFIED
 ALL DIM ±0.1
 ANGULAR DIM ±1°

MUST BE FREE OF BURRS & SHARP EDGES
 NYLON BALL MUST BE FREE OF
 FLASH AT PART LINE

CHANGES AFFECTING DESIGN, COMPOSITION OR
 PROCESSING OF THE PART PREVIOUSLY APPROVED
 FOR PRODUCTION REQUIRE PRIOR APPROVAL FROM
 FORD PRODUCT ENGINEERING, REFER TO QS-9000

FOR CURRENT RELEASE STATUS SEE WENS
 ENGINEERING NOTICE

MANUFACTURER TO ESTABLISH PRODUCT
 ENGINEERING APPROVED CONTROL PLAN

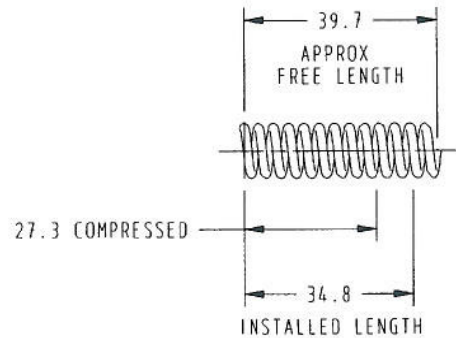
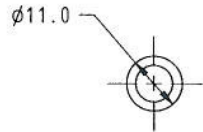
CORROSION PROTECTION FOR SERVICE PARTS
 MUST COMPLY WITH FORD CUSTOMER SERVICE
 DIVISION (FCSO) PACKAGING AND SHIPPING
 GUIDE

LTRS				REVISIONS			
ORIGINATOR	CHECKER	ENGR APP	MATL APP				
RELEASED							
WFOE-E-10948866-000 990507							
CMESTPHA	BBOWLING	KPRZEBIE		LK990428			
A1	WAS Ø14.85-14.82 NOW 14.84 BSC						
A2	WAS R0.15 NOW BSC						
A3	WAS 45° NOW BSC						
A4	WAS 10° NOW BSC						
A5	WAS 90° NOW BSC						
A6	WAS 40° NOW BSC						
A7	WAS R0.35 NOW BSC						
A8	WAS 27.60 NOW 27.62 BSC						
A9	ADDED B BSC						
A10	MOVED DATUM B						
A11	MOVED DATUM C						
A12	ADDED NOTE EQUALLY SPACED						
A13	REVISED CALLOUT ADDED ØØØ1						
A14	ADDED SEGMENTS A, B, C & D						
A15	ADDED PROFILE TO TEETH						
A16	WAS 42°						
WFOE-E-10984451-000				990428			
SPFETTER	CZYSEK	KPRZEBIE					



REFERENCE							
PART MUST COMPLY WITH MATERIAL SPECIFICATION WSS-M99P9999-A1 TO HELP SAFEGUARD HEALTH, SAFETY AND THE ENVIRONMENT.							
DRAFTED IN ACCORDANCE WITH F40 ENGINEERING DRAFTING STANDARD CURRENT AT INITIAL RELEASE.				3RD ANGLE PROJ DIMENSIONS IN MILLIMETERS			
CAD TYPE	CAD LOC.	CAD FILE	CPSE 110401	E-KIGM9L IS MASTER			
S-IDEAS	METAPH	112C-7439-BA					
OPER. NO.	UNIT	DRAWING	112C-7439-BA				
DESIGN CMESTPHA	DETAIL SPFETTER	TITLE	LEVER ASY-TRANS GEAR SHIFT LEVER SELECTOR				SHT 1 OF 1
CHECKED BBOWLING	SAFETY						
SCALE 4:1 & NOTED	DATE 990405	DIVISION 8075	PLANT		Visteon		

FORM SIZE A170



MATERIAL:
ASTM A228/A228M STEEL WIRE MUSIC
SPRING QUALITY

SPRING DATA:
MUST WORK OVER 6.3 DIA PIN &
IN A 11.3 DIA HOLE
WIRE DIA 1.85 ±0.03
TOTAL COILS 12.75 REF
RATE 14.0967 NEWTONS/MILLIMETER (REF)
SOLID HEIGHT 23.5875 MAX
CLOSED ENDS GROUND
DIRECTION OF COILING OPT

CHANGES AFFECTING DESIGN, COMPOSITION OR
PROCESSING OF THE PART PREVIOUSLY APPROVED
FOR PRODUCTION REQUIRE PRIOR APPROVAL FROM
FORD PRODUCT ENGINEERING, REFER TO QS-9000

FOR CURRENT RELEASE STATUS SEE WERS
ENGINEERING NOTICE

MANUFACTURER TO ESTABLISH PRODUCT
ENGINEERING APPROVED CONTROL PLAN

CORROSION PROTECTION FOR SERVICE PARTS
MUST COMPLY WITH FORD CUSTOMER SERVICE
DIVISION (FCSD) PACKAGING AND SHIPPING
GUIDE

LTRS	REVISIONS		
ORIGINATOR	CHECKER	ENGR APP	MATL APP
RELEASED WCOO-E-10948866-000		990507	
ABOSSIDI	BBOWLING	KPRZERIE	LK990428
<i>R. Bawling</i> 990507		<i>K. Przerie</i> 990511	

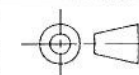


THIS DRAWING AND ANY
INTELLECTUAL PROPERTY RIGHTS
THEREIN ARE PROPERTY OF
VISTEON AUTOMOTIVE SYSTEMS
AND NO LICENSES ARE GRANTED
UNDER THOSE RIGHTS

REFERENCE

PART MUST COMPLY WITH MATERIAL SPECIFICATION WSS-M99P9999-A1
TO HELP SAFEGUARD HEALTH, SAFETY AND THE ENVIRONMENT.


DRAFTED IN ACCORDANCE WITH FAO
ENGINEERING DRAFTING STANDARD
CURRENT AT INITIAL RELEASE.



3RD ANGLE PROJ
DIMENSIONS IN
MILLIMETERS

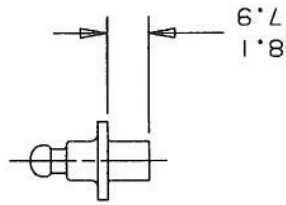
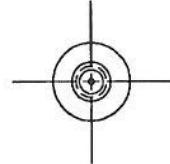
CAD TYPE S-IDEAS	CAD LOC. METAPH	CAD FILE CPSC 110401 1L2C-7B071-BA	<input checked="" type="checkbox"/> ORIGINAL IS MASTER
OPER. NO.	UNIT	DRAWING 1L2C-7B071-BA	
DESIGN ABOSSIDI	DETAIL ABOSSIDI	TITLE SPRING-TRANS CON SEL LEVER RETURN	SHT 1 OF 1
CHECKED BBOWLING	SAFETY		
SCALE 1:1	DATE 990407	DIVISION B875	Visteon
		PLANT	

DRW SIZE A3/B

Visteon		PLANT		980211	FULL
		DIVISION N720		DATE	SCALE
SHT		TITLE		CNOPLAN	CHECKED
OF		PIN - TRANS AUTO CONTROL LEVER		SAFETY	
IS MASTE		DRAWING		UNIT	OPER. NO.
ORIGIN		CAD FILE		CAD LOC.	F-PDGS
		1L2C-7B210-AA		ACD2	
3RD ANGLE PRO		DRAFTED IN ACCORDANCE WITH FAO		CURRENT AT INITIAL RELEASE	
DIMENSIONS IN		ENGINEERING DRAFTING STANDARD		MILLIMETERS	
		TO HELP SAFEGUARD HEALTH, SAFETY AND THE ENVIRONMENT.		PART MUST COMPLY WITH MATERIAL SPECIFICATION MSS-M9P9999-A1	
		REFERENCE			
				<p>THIS DRAWING AND ANY INTELLECTUAL PROPERTY RIGHTS THEREIN ARE PROPERTY OF VISTEON AUTOMOTIVE SYSTEMS AND NO LICENSES ARE GRANTED UNDER THOSE RIGHTS</p>	

LTRS		REVISIONS	
ORIGINATOR	CHECKER	ENGR APP	MATL API
CP RELEASE			
WCD0-E-10857275-000 () 980926		CNOPLAN	
A1 REMOVED UNCHECKED STATUS			
RELEASED			
WCD0-E-10902767-000 () 981208		CAD:	
JSINGER4	MLENSKI	KPRZEBIE	LE 990212
			990210
			990212

(A1)



SAME AS F2TA-7B210-AA EXCEPT AS SHOWN

MATERIAL: SAE J403 1038 STEEL
 QUENCH & TEMPER TO RC 28-34

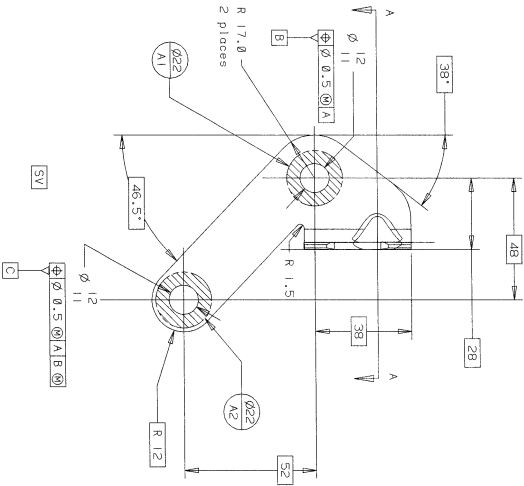
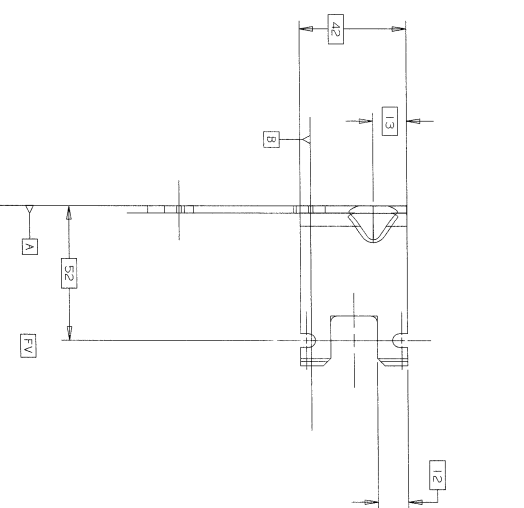
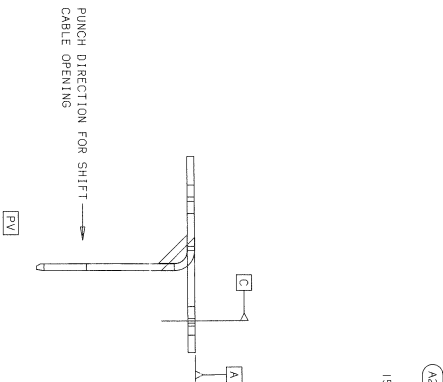
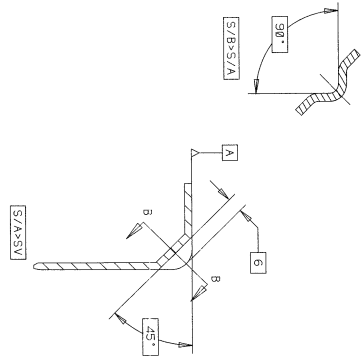
MUST BE FREE OF BURRS & SHARP EDGES

CHANGES AFFECTING DESIGN, COMPOSITION OR PROCESSING OF THE PART PREVIOUSLY APPROVED FOR PRODUCTION REQUIRE PRIOR APPROVAL FROM FORD PRODUCT ENGINEERING. REFER TO QS-9000 CORROSION PROTECTION FOR SERVICE PARTS MUST COMPLY WITH FORD CUSTOMER SERVICE DIVISION (FCSO) PACKAGING AND SHIPPING GUIDE

FOR CURRENT RELEASE STATUS SEE WERS ENGINEERING NOTICE

MANUFACTURER TO ESTABLISH PRODUCT ENGINEERING APPROVED CONTROL PLAN

ORIGINATOR	CHECKER	ENGR APP	MATL APP
RELEASED			
1L2P-7B229-AA WAS 1L2P-7B229-A0			
N100-E-10972468-000			598510
JSCOTT10	JSCOTT10	HOOVER	
A1 ADDED DIMENSION			
A2 WELD DIMENSION			
A3 N100-E-1103341-4-000			991112
JSCOTT10	JSCOTT10	HOOVER	



PART MUST CONFORM TO REQUIREMENTS OF WSK-M2P157-A3 EXCEPT: 240 h SALT SPRAY RESISTANCE, MIN UNLESS OTHERWISE SPECIFIED:

ALL INSIDE BEND RADII TO BE R 3.5 MAX UNLESS OTHERWISE SPECIFIED:
 1.5 | A | B | C
 ALL OVER ON DIMENSIONED SIDE

MANUFACTURER TO ESTABLISH PRODUCT ENGINEERING APPROVED CONTROL PLAN ENGINEERING APPROVAL OF A MINIMUM OF SIX SAMPLES FROM EACH SUPPLIER IS REQUIRED PRIOR TO FIRST SHIPMENT OF PARTS FOR INITIAL RELEASE AND ALL SUBSEQUENT CHANGE REQUESTS FOR CURRENT RELEASE STATUS SEE THE WERS ENGINEERING NOTICE

CORROSION PROTECTION FOR SERVICE PARTS MUST COMPLY WITH FORD CUSTOMER SERVICE DIVISION (FCSO) PACKAGING AND SHIPPING GUIDE

CHANGES AFFECTING DESIGN, COMPOSITION OR PROCESSING OF THE PART PREVIOUSLY APPROVED FROM PRODUCT ENGINEERING, REFER TO 05-9000

PART MUST COMPLY WITH SPECIFICATION MSS-H99P9999-A1 TO HELP SAFEGUARD HEALTH, SAFETY AND THE ENVIRONMENT UNLESS OTHERWISE SPECIFIED BEND AND BLANK RADI TO BE METAL THICKNESS REMOVE ALL SHARP EDGES

SAE J403 1008-1018 3.0 ±0.2

DESIGN	DETAIL	TITLE	SHT 1
JSCOTT10	JSCOTT10	BRACKET-TRANS CONTROL CABLE	DF-1
CHECKED	SAFETY		
JSCOTT10			
SCALE	DIVISION	ATEO	
FULL	PLANT		

