

Howell, Rosa (NHTSA)

From: Demeter, Kathleen (NHTSA)
Sent: Monday, November 23, 2009 5:46 PM
To: Hershman, Larry (NHTSA)
Subject: FW: Washington FARS-NASS Case Images Part 2

[more](#)

From: Clarence Ditlow [mailto:cmdiii@autosafety.org]
Sent: Monday, November 23, 2009 3:47 PM
To: Demeter, Kathleen (NHTSA)
Subject: Washington FARS-NASS Case Images Part 2

Clarence Ditlow
Executive Director
Center for Auto Safety
1825 Connecticut Ave NW
Washington DC 20009

DP09-005

Center for Auto Safety

11/23/2009

Images-2006-81-16 Part 2



VEHICLE 1 BACK C6-C1 above bumper



VEHICLE 1 LEFT LEFT front 1/3



VEHICLE 1 FRONT Possible contact to windshield



VEHICLE 1 LEFT LEFT middle 1/3 from front



VEHICLE 1 FRONT FRONT



VEHICLE 1 LEFT LEFT middle 1/3 from back



VEHICLE 1 Front/Left Oblique Front/Left Oblique



VEHICLE 1 LEFT LEFT back 1/3



VEHICLE 1 Back/Left Oblique Back/Left Oblique



VEHICLE 1 RIGHT RIGHT middle 1/3 from back



VEHICLE 1 BACK BACK



VEHICLE 1 RIGHT RIGHT middle 1/3 from front



VEHICLE 1 Back/Right Oblique Back/Right Oblique



VEHICLE 1 RIGHT RIGHT front 1/3



VEHICLE 1 RIGHT RIGHT back 1/3



VEHICLE 1 Front/Right Oblique Front/Right Oblique



VEHICLE 1 Top Top from front



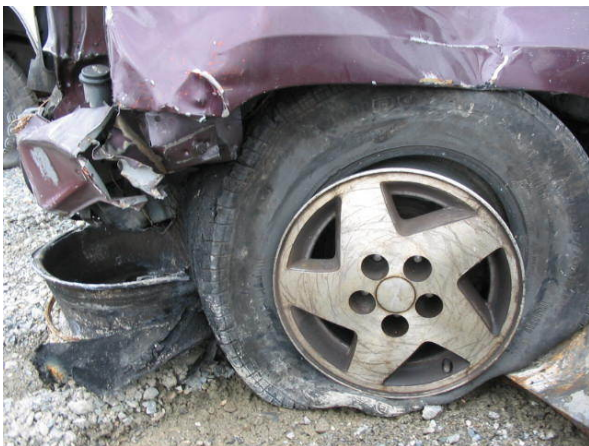
VEHICLE 1 MISCELLANEOUS Tire manufacturer



VEHICLE 1 Top Top from back



VEHICLE 1 MISCELLANEOUS Tire size



VEHICLE 1 LEFT LF Tire



VEHICLE 1 MISCELLANEOUS Tire max pressure



VEHICLE 1 MISCELLANEOUS LF tire melted



VEHICLE 1 LEFT LR tire



VEHICLE 1 FUEL SYSTEM Fuel filler neck



VEHICLE 1 RIGHT RF tire



VEHICLE 1 FUEL SYSTEM Fuel filler cap location



VEHICLE 1 MISCELLANEOUS Tire model



VEHICLE 1 RIGHT RR tire



VEHICLE 1 RIGHT R "B" pillar



VEHICLE 1 FUEL SYSTEM Fuel tank



VEHICLE 1 BACK Tail gate



VEHICLE 1 INTERIOR 1ST ROW Look through LF door across row



VEHICLE 1 INTERIOR 1ST ROW Look through RF door instrument pan



VEHICLE 1 INTERIOR 2ND ROW Look through LR door across row



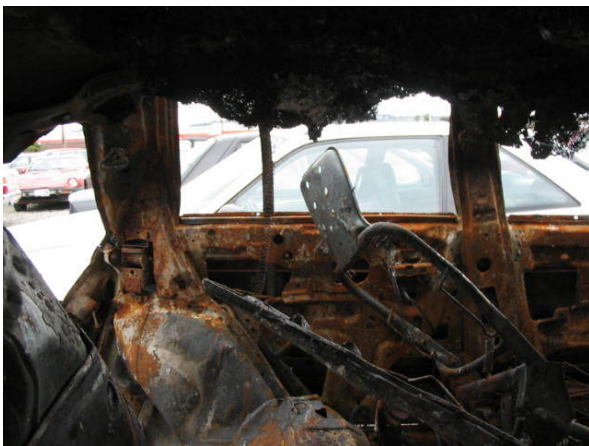
VEHICLE 1 INTERIOR 1ST ROW Look through LF door instrument pan



VEHICLE 1 INTERIOR 1ST ROW Look through RF door across row



VEHICLE 1 INTERIOR 1ST ROW Steering assembly



VEHICLE 1 INTERIOR 2ND ROW Look through RR door across row



VEHICLE 1 INTERIOR 1ST ROW Steering assembly



VEHICLE 1 INTERIOR 1ST ROW Seat 11



VEHICLE 1 INTERIOR 1ST ROW Seat 13



VEHICLE 1 INTERIOR 1ST ROW 11 belt adjuster



VEHICLE 1 INTERIOR 1ST ROW 13 head restraint



VEHICLE 1 INTERIOR 1ST ROW 11 belt retractor



VEHICLE 1 INTERIOR 1ST ROW 13 belt retractor



VEHICLE 1 INTERIOR 1ST ROW 11 belt latch



VEHICLE 1 INTERIOR 1ST ROW 13 belt latch



VEHICLE 1 INTERIOR 1ST ROW Transmission shifter



VEHICLE 1 INTERIOR 2ND ROW 21 and 22 belt latch



VEHICLE 1 INTERIOR 2ND ROW 2nd row seat



VEHICLE 1 INTERIOR 2ND ROW 23 belt latch



VEHICLE 1 INTERIOR 2ND ROW 21 belt retractor



VEHICLE 1 INTERIOR 2ND ROW 23 belt retractor



VEHICLE 1 INTERIOR 2ND ROW 21 belt adjuster



VEHICLE 1 INTERIOR 2ND ROW 23 belt adjuster



VEHICLE 1 INTERIOR 1ST ROW 13 belt adjuster



VEHICLE 1 INTERIOR 1ST ROW 12 bottom



VEHICLE 1 INTERIOR 1ST ROW 11 top



VEHICLE 1 INTERIOR 1ST ROW 13 top



VEHICLE 1 INTERIOR 1ST ROW 11 bottom



VEHICLE 1 INTERIOR 1ST ROW 13 bottom



VEHICLE 1 INTERIOR 1ST ROW 12 top