

TQCN DOC# FTR-5YA212841		Affiliate TMS	Dept. QA-Chassis	Source FTS	Location REG-SET	Ref 22367-1	Date 5/7/2004
Problem Area Base Vehicle	Primary Model Sequoia	Model Year 2003	Production Date 03-2003	Odometer 6251 mi	VIN (confirm 17 characters): 5TDZT34A03S [REDACTED]		
Condition Title 03 Sequoia contaminated wheel speed sensor							

Do not type in YELLOW shaded fields - Input data from Web page or RDM:

Repair Date 05/05/04	Optional Ref.	Optional Approval
--------------------------------	---------------	-------------------

Condition Description

Customer stated that intermittently the vehicle would not accelerate. Customer had not noticed any indicator lights on when the condition occurred.

Diagnostic Steps:

Test drive indicated that the VSC/TRAC system was prematurely activating when accelerating from a stop.

Probable Cause

Technician removed and inspected all 4 ABS wheel speed sensors. The left rear wheel speed sensor was found to be contaminated with what appeared to be rust particles. Origin of the contamination/debris is unknown.

Part # 1: 895460C010	Part # 2:	Part # 3:	Parts Disposition: No part available	Parts Shipping Destination: N/A
-------------------------	-----------	-----------	---	------------------------------------

Repair Process

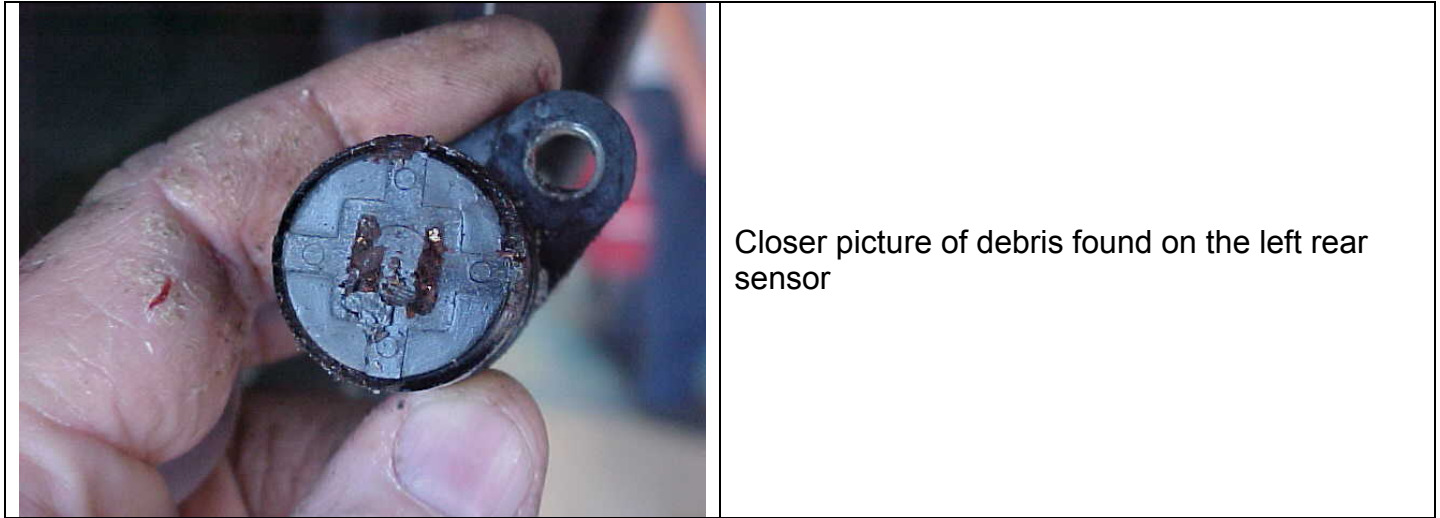
Technician cleaned the sensor and reinstalled it. The condition no longer occurred after cleaning the left rear sensor.



Debris found on left rear wheel speed sensor

FIELD TECHNICAL REPORT

TQCN DOC# FTR-5YA212841	Affiliate TMS	Dept. QA-Chassis	Source FTS	Location REG-SET	Ref 22367-1	Date 5/7/2004
Problem Area Base Vehicle	Primary Model Sequoia	Model Year 2003	Production Date 03-2003	Odometer 6251 mi	VIN (confirm 17 characters): 5TDZT34A03S [REDACTED]	
Condition Title 03 Sequoia contaminated wheel speed sensor						



Attachment 1: PRCS

FIELD TECHNICAL REPORT



TQCN DOC# FTR-5YA212841	Affiliate TMS	Dept. QA-Chassis	Source FTS	Location REG-SET	Ref 22367-1	Date 5/7/2004
Problem Area Base Vehicle	Primary Model Sequoia	Model Year 2003	Production Date 03-2003	Odometer 6251 mi	VIN (confirm 17 characters): 5TDZT34A03S [REDACTED]	
Condition Title 03 Sequoia contaminated wheel speed sensor						

Attachment 1: Parts Recovery Control Sheet

Orig Tracking

VIN



Doc No.



Do not type in SHADED fields. If the **Final Destination** field below is "scrap", properly dispose of the part.

Final Destination: N/A		SETR#:	CQE Eng:	N/A
Importer: (Applies to TMC Shipments Only)		Deliver to:		住所:
North America EDER Gr., Technical Dept. #1 Overseas Customer Service Technical Div. TOYOTA MOTOR CORPORATION Nisshin Education & Training Center 5-210, SAKAE, NISSHIN, AICH, 470-0113 Japan		Attn:		宛先:
		Tel:		Tel:
T-STAR				
Note: If this FTR contains more than one VIN, create a table in the report containing VIN, production date, and odometer				FOR CUSTOMS USE: Used Parts Value
1	Part # 1:	Part Description	Qty.	Used Part Value
	895460C010	SENSOR, SPEED, RR LH	0	\$ 27 .00
Comments:				
2	Part # 2:	Part Description	Qty.	Used Part Value
			0	\$ 0 .00
Comments:				
3	Part # 3:	Part Description	Qty.	Used Part Value
			0	\$ 0 .00
Comments:				
4	Part # 4:	Part Description	Qty.	Used Part Value
				\$.00
Comments:				
5	Part # 5:	Part Description	Qty.	Used Part Value
				\$.00
Comments:				
6	Part # 6:	Part Description	Qty.	Used Part Value
				\$.00
Comments:				
7	Part # 7:	Part Description	Qty.	Used Part Value
				\$.00
Comments:				
8	Part # 8:	Part Description	Qty.	Used Part Value
				\$.00
Comments:				

20040508Y00090

TQCN DOC# FTR-5YA212841B		Affiliate TMS	Dept. QA-Chassis	Source FTS	Location REG-SET	Ref 22367-1	Date 5/7/2004
Problem Area Base Vehicle	Primary Model Sequoia	Model Year 2003	Production Date 12-2002	Odometer 10355 mi	VIN (confirm 17 characters): 5TDZT34AX3S [REDACTED]		
Condition Title 03 Sequoia contaminated rear wheel ABS speed sensor							

Do not type in YELLOW shaded fields - Input data from Web page or RDM:

Repair Date 04/20/04	Optional Ref.	Optional Approval
--------------------------------	---------------	-------------------

Condition Description

Customer complained that the vehicle would loose power while accelerating from a stop. Condition would occur more frequently while accelerating from a stop while turning.

Diagnostic Steps:

Technician was able to duplicate the condition and found that the traction control system was activating prematurely.

Probable Cause

The right rear ABS wheel speed sensor was found to have an excessive amount of rust/debris and grease on the tip of the sensor. The right rear ABS wheel speed sensor reluctor was not rusted.

Part # 1: 895450C010	Part # 2:	Part # 3:	Parts Disposition: No part available	Parts Shipping Destination: N/A
-------------------------	-----------	-----------	---	------------------------------------

Repair Process

The technician cleaned the sensor, reinstalled the sensor, and confirmed that the condition no longer occurred under the same driving conditions.



Debris/Rust on the right rear ABS wheel speed sensor.

Attachment 1: PRCS

FIELD TECHNICAL REPORT



TQCN DOC# FTR-5YA212841B	Affiliate TMS	Dept. QA-Chassis	Source FTS	Location REG-SET	Ref 22367-1	Date 5/7/2004
Problem Area Base Vehicle	Primary Model Sequoia	Model Year 2003	Production Date 12-2002	Odometer 10355 mi	VIN (confirm 17 characters): 5TDZT34AX3S [REDACTED]	
Condition Title 03 Sequoia contaminated rear wheel ABS speed sensor						

Attachment 1: Parts Recovery Control Sheet

Do not type in SHADED fields. If the **Final Destination** field below is "scrap", properly dispose of the part.

Orig Tracking

VIN

Doc No.



Final Destination: N/A		SETR#:	CQE Eng:	N/A
Importer: (Applies to TMC Shipments Only)		Deliver to:	住所:	
North America EDER Gr., Technical Dept. #1 Overseas Customer Service Technical Div. TOYOTA MOTOR CORPORATION Nisshin Education & Training Center 5-210, SAKAE, NISSHIN, AICH, 470-0113 Japan		Attn:	宛先:	
		Tel:	Tel:	
T-STAR				
Note: If this FTR contains more than one VIN, create a table in the report containing VIN, production date, and odometer				FOR CUSTOMS USE: Used Parts Value
1	Part # 1:	Part Description	Qty.	Used Part Value
	895450C010	SENSOR, SPEED, RR RH	0	\$ 27 .00
Comments:				
2	Part # 2:	Part Description	Qty.	Used Part Value
			0	\$ 0 .00
Comments:				
3	Part # 3:	Part Description	Qty.	Used Part Value
			0	\$ 0 .00
Comments:				
4	Part # 4:	Part Description	Qty.	Used Part Value
				\$.00
Comments:				
5	Part # 5:	Part Description	Qty.	Used Part Value
				\$.00
Comments:				
6	Part # 6:	Part Description	Qty.	Used Part Value
				\$.00
Comments:				
7	Part # 7:	Part Description	Qty.	Used Part Value
				\$.00
Comments:				
8	Part # 8:	Part Description	Qty.	Used Part Value
				\$.00
Comments:				

20050129K00030

TQCN DOC# FTR-VOA202751		Affiliate TMS	Dept. QA-Chassis	Source FPE	Location REG-SET	Ref 17194-1	Date 1/28/2005
Problem Area Base Vehicle	Primary Model Sequoia	Model Year 2003	Production Date 11-2002	Odometer 29689 mi	VIN (confirm 17 characters): 5TDZT34A83S XXXXXXXXXX		
Condition Title Debris On ABS Speed Sensors							

Do not type in YELLOW shaded fields - Input data from Web page or RDM:

Repair Date	Optional Ref.	Optional Approval
-------------	---------------	-------------------

Condition Description

Customer states that the vehicle loses power and VSC/TRAC lights flashes intermittently. Condition occurs when vehicle is turned slightly while driving at lower speeds. Will also occur when going around a curve.

Diagnostic Steps:

Tech confirmed condition. VSC is activating under above driving conditions.
No DTC's.
Debris was found on both rear ABS wheel speed sensors. The sensors were covered by the debris, which affected the sensor reading. There was some contamination on the ABS reluctor rings, also. Material looked to be a combination of dirt and rust.

Probable Cause

Unknown.

Part # 1: N/A	Part # 2:	Part # 3:	Parts Disposition: No part available	Parts Shipping Destination: N/A
------------------	-----------	-----------	---	------------------------------------

Repair Process

It was necessary to clean the ABS wheel speed sensors and the ABS reluctor rings on the axle. This corrected the condition.



Debris on rear ABS wheel speed sensor

Attachment 1: PRCS

FIELD TECHNICAL REPORT



TQCN DOC# FTR-VOA202751		Affiliate TMS	Dept. QA-Chassis	Source FPE	Location REG-SET	Ref 17194-1	Date 1/28/2005
Problem Area Base Vehicle	Primary Model Sequoia	Model Year 2003	Production Date 11-2002	Odometer 29689 mi	VIN (confirm 17 characters): 5TDZT34A83S [REDACTED]		
Condition Title Debris On ABS Speed Sensors							

Attachment 1: Parts Recovery Control Sheet

Orig
Tracking

VIN

Doc No.

Do not type in SHADED fields. If the **Final Destination** field below is "scrap", properly dispose of the part.

Final Destination: N/A		SETR#:		CQE Eng:	N/A	
Importer: (Applies to TMC Shipments Only)		Deliver to:		住所 :		
North America EDER Gr., Technical Dept. #1 Overseas Customer Service Technical Div. TOYOTA MOTOR CORPORATION Nisshin Education & Training Center 5-210, SAKAE, NISSHIN, AICH, 470-0113 Japan		Attn:		宛先 :		
		Tel:		Tel:		
T-STAR						
Note: If this FTR contains more than one VIN, create a table in the report containing VIN, production date, and odometer						FOR CUSTOMS USE: Used Parts Value
1	Part # 1:	Part Description			Qty.	Used Part Value
	N/A				0	\$ 0.00
Comments:						
2	Part # 2:	Part Description			Qty.	Used Part Value
					0	\$ 0.00
Comments:						
3	Part # 3:	Part Description			Qty.	Used Part Value
					0	\$ 0.00
Comments:						
4	Part # 4:	Part Description			Qty.	Used Part Value
						\$.00
Comments:						
5	Part # 5:	Part Description			Qty.	Used Part Value
						\$.00
Comments:						
6	Part # 6:	Part Description			Qty.	Used Part Value
						\$.00
Comments:						
7	Part # 7:	Part Description			Qty.	Used Part Value
						\$.00
Comments:						
8	Part # 8:	Part Description			Qty.	Used Part Value
						\$.00
Comments:						

FIELD TECHNICAL REPORT

TQCN DOC# FTR-VOA202751	Affiliate TMS	Dept. QA-Chassis	Source FPE	Location REG-SET	Ref 17194-1	Date 1/28/2005
Problem Area Base Vehicle	Primary Model Sequoia	Model Year 2003	Production Date 11-2002	Odometer 29689 mi	VIN (confirm 17 characters): 5TDZT34A83S [REDACTED]	
Condition Title Debris On ABS Speed Sensors						

20050326K00070

TQCN DOC# FTR-VOA208351		Affiliate TMS	Dept. QA-Chassis	Source FPE	Location REG-SET	Ref 22367-1	Date 3/25/2005
Problem Area Base Vehicle	Primary Model Sequoia	Model Year 2004	Production Date 12-2003	Odometer 228879 mi	VIN (confirm 17 characters): 5TDZT34A74S [REDACTED]		
Condition Title Intermittent Traction Control engagement							

Do not type in YELLOW shaded fields - Input data from Web page or RDM:

Repair Date	Optional Ref.	Optional Approval
-------------	---------------	-------------------

Condition Description

Customer states that the vehicle loses power and VSC/TRAC lights flashes intermittently. Condition occurs when vehicle is turned slightly while driving at lower speeds. Will also occur when going around a curve.

Diagnostic Steps:

Tech confirmed condition. VSC is activating under above driving conditions.
No DTC's.

Probable Cause

Debris was found on both rear ABS wheel speed sensors. The sensors were covered by the debris, which affected the sensor reading. There was some contamination on the ABS speed sensor rotors, also. Material looked to be a combination of dirt and rust.

Part # 1: 895460C020	Part # 2:	Part # 3:	Parts Disposition: Have part / will ship	Parts Shipping Destination: CQEC
-------------------------	-----------	-----------	---	-------------------------------------

Repair Process

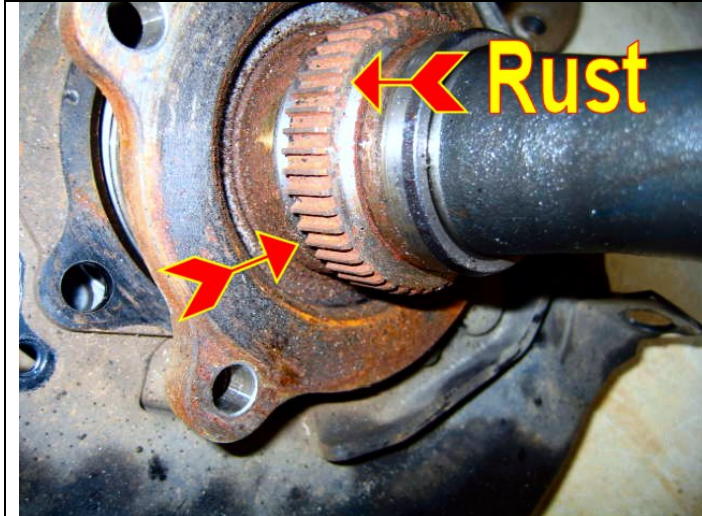
Technician replaced both rear ABS speed sensors and speed sensor rotors to correct condition.



Debris on rear ABS wheel speed sensor

FIELD TECHNICAL REPORT

TQCN DOC# FTR-VOA208351	Affiliate TMS	Dept. QA-Chassis	Source FPE	Location REG-SET	Ref 22367-1	Date 3/25/2005
Problem Area Base Vehicle	Primary Model Sequoia	Model Year 2004	Production Date 12-2003	Odometer 228879 mi	VIN (confirm 17 characters): 5TDZT34A74S [REDACTED]	
Condition Title Intermittent Traction Control engagement						



Corrosion on ABS speed sensor rotor

Attachment 1: PRCS

FIELD TECHNICAL REPORT



TQCN DOC# FTR-VOA208351		Affiliate TMS	Dept. QA-Chassis	Source FPE	Location REG-SET	Ref 22367-1	Date 3/25/2005
Problem Area Base Vehicle	Primary Model Sequoia	Model Year 2004	Production Date 12-2003	Odometer 228879 mi	VIN (confirm 17 characters): 5TDZT34A74S [REDACTED]		
Condition Title Intermittent Traction Control engagement							

Attachment 1: Parts Recovery Control Sheet

Orig
Tracking

VIN



Do not type in SHADED fields. If the **Final Destination** field below is "scrap", properly dispose of the part.

Doc No.



Final Destination: CQEC		SETR#:	CQE Eng:	N/A
Importer: (Applies to TMC Shipments Only)		Deliver to:	住所 :	
North America EDER Gr., Technical Dept. #1 Overseas Customer Service Technical Div. TOYOTA MOTOR CORPORATION Nisshin Education & Training Center 5-210, SAKAE, NISSHIN, AICH, 470-0113 Japan		Attn:	宛先 :	
		Tel:	Tel:	
T-STAR				
Note: If this FTR contains more than one VIN, create a table in the report containing VIN, production date, and odometer				FOR CUSTOMS USE: Used Parts Value
1	Part # 1: 895460C020	Part Description SENSOR, SPEED, RR LH	Qty. 2	Used Part Value \$ 27 .00
	Comments:			
2	Part # 2:	Part Description	Qty. 0	Used Part Value \$ 0 .00
	Comments:			
3	Part # 3:	Part Description	Qty. 0	Used Part Value \$ 0 .00
	Comments:			
4	Part # 4:	Part Description	Qty.	Used Part Value \$.00
	Comments:			
5	Part # 5:	Part Description	Qty.	Used Part Value \$.00
	Comments:			
6	Part # 6:	Part Description	Qty.	Used Part Value \$.00
	Comments:			
7	Part # 7:	Part Description	Qty.	Used Part Value \$.00
	Comments:			
8	Part # 8:	Part Description	Qty.	Used Part Value \$.00
	Comments:			

FIELD TECHNICAL REPORT

TQCN DOC# FTR-VOA208351	Affiliate TMS	Dept. QA-Chassis	Source FPE	Location REG-SET	Ref 22367-1	Date 3/25/2005
Problem Area Base Vehicle	Primary Model Sequoia	Model Year 2004	Production Date 12-2003	Odometer 228879 mi	VIN (confirm 17 characters): 5TDZT34A74S [REDACTED]	
Condition Title Intermittent Traction Control engagement						

20050520I00130

FIELD TECHNICAL REPORT

TQCN DOC# FTR-JOA213351		Affiliate TMS	Dept. QA-Chassis	Source FTS	Location TMS-CHI	Ref 27108-1	Date 5/16/2005
Problem Area Base Vehicle	Primary Model Sequoia	Model Year 2005	Production Date 06-Apr-2005	Odometer 34 mi	VIN (confirm 17 characters): 5TDBT48A75S [REDACTED]		
Condition Title Excessive VSC Operation							

Do not type in YELLOW shaded fields - Input data from Web page or RDM:

Repair Date 29-APR-2005	Optional Ref.	Optional Approval
-----------------------------------	---------------	-------------------

Condition Description

The VSC light will flash and VSC will engage for a short time over 40 mph. From 40 to 10 mph the ABS/VSC actuator can be heard engaging, but the VSC light would not illuminate.

Diagnostic Steps:

No DTC's were stored in the ECU. The wheel speed sensors were swapped with a new vehicle along with the translate ECU with no change in the condition. The VSC ECU was then swapped and the condition moved to the other vehicle.

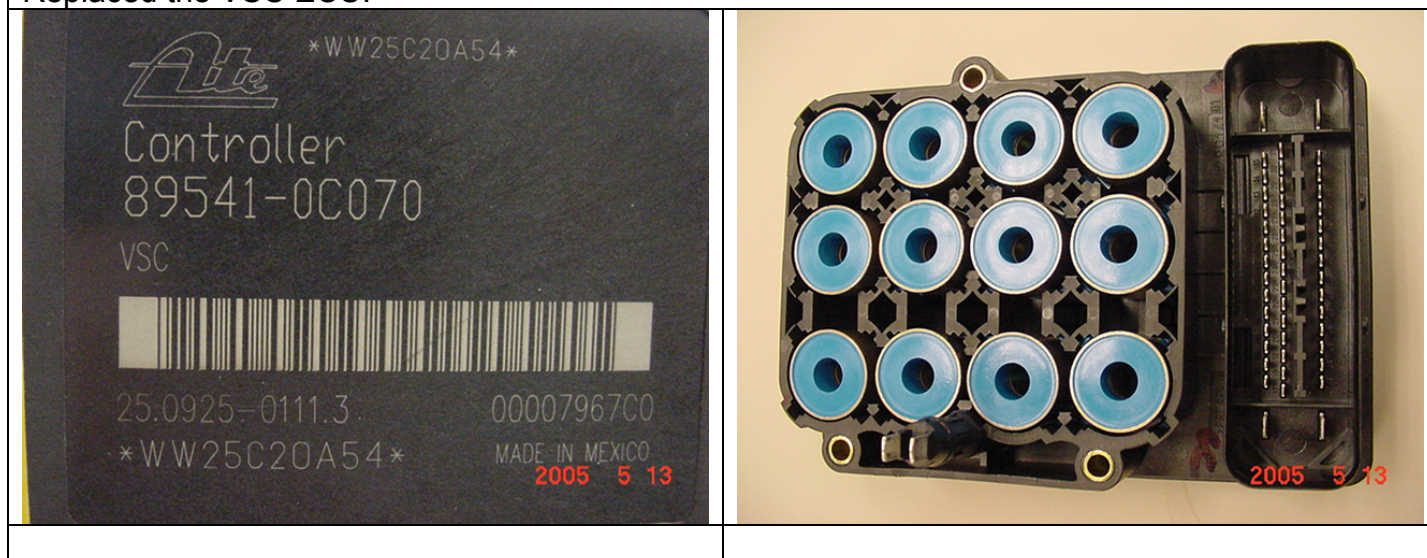
Probable Cause

VSC ECU.

Part # 1: 895410C070	Part # 2:	Part # 3:	Parts Disposition: Have part / will ship	Parts Shipping Destination: CQEC
-------------------------	-----------	-----------	---	-------------------------------------

Repair Process

Replaced the VSC ECU.



Attachment 1: PRCS

FIELD TECHNICAL REPORT



TQCN DOC# FTR-JOA213351		Affiliate TMS	Dept. QA-Chassis	Source FTS	Location TMS-CHI	Ref 27108-1	Date 5/16/2005
Problem Area Base Vehicle	Primary Model Sequoia	Model Year 2005	Production Date 06-Apr-2005	Odometer 34 mi	VIN (confirm 17 characters): 5TDBT48A75S [REDACTED]		
Condition Title Excessive VSC Operation							

Attachment 1: Parts Recovery Control Sheet

Do not type in SHADED fields. If the **Final Destination** field below is "scrap", properly dispose of the part.

Orig Tracking

VIN



Doc No.



Final Destination: CQEC		SETR#:	CQE Eng:	N/A
Importer: (Applies to TMC Shipments Only)		Deliver to:		住所:
Mr. N. Okumura, Chief Expert Quality Div. Warranty Parts Room TOYOTA MOTOR CORPORATION 1 Toyota, Toyota-city, Aichi, 471-8571 Japan		Attn:		宛先:
		Tel:		Tel:
T-STAR				
Note: If this FTR contains more than one VIN, create a table in the report containing VIN, production date, and odometer				FOR CUSTOMS USE: Used Parts Value
1	Part # 1: 895410C070	Part Description COMPUTER, SKID CONTROL	Qty. 1	Used Part Value \$ 268 .00
	Comments:			
2	Part # 2:	Part Description	Qty. 0	Used Part Value \$ 0 .00
	Comments:			
3	Part # 3:	Part Description	Qty. 0	Used Part Value \$ 0 .00
	Comments:			

20040323300060

TQCN DOC# FTR-5WA208241		Affiliate TMS	Dept. QA-Chassis	Source FPE	Location REG-SET	Ref 17194-1	Date 3/22/04
Problem Area Base Vehicle	Primary Model Sequoia		Model Year 2003	Production Date 04-2003	Odometer 13735 mi	VIN (confirm 17 characters): 5TDZT34A63S [REDACTED]	
Condition Title VSC Activates intermittently							

Do not type in YELLOW shaded fields - Input data from Web page or RDM:

Repair Date 2/23/04	Optional Ref.	Optional Approval
------------------------	---------------	-------------------

Condition Description

Customer states VSC activates while driving down the road, sometimes when turning at low speeds. This is an intermittent condition. No DTC.
Dealer 39035

Diagnostic Steps:

Speed sensors read within 1 mph during test drive. Dealer had replaced ABS/VSC ECU per TSB BR003-03.

Probable Cause

Each speed sensor was removed for inspection. Right rear sensor had an accumulation of rust/grease partially covering sensor tip. Origination of rust/grease is undetermined. Possible assembly lube? Gear oil in differential was normal, no evidence of leakage. The reluctor was not corroded.

Part # 1: N/A	Part # 2:	Part # 3:	Parts Disposition: No part available	Parts Shipping Destination: N/A
------------------	-----------	-----------	---	------------------------------------

Repair Process

The substance was removed from the sensor. The sensor was cleaned and reinstalled.



Contaminated speed sensor

Attachment 1: PRCS

FIELD TECHNICAL REPORT



TQCN DOC# FTR-5WA208241	Affiliate TMS	Dept. QA-Chassis	Source FPE	Location REG-SET	Ref 17194-1	Date 3/22/04
Problem Area Base Vehicle	Primary Model Sequoia	Model Year 2003	Production Date 04-2003	Odometer 13735 mi	VIN (confirm 17 characters): 5TDZT34A63S [REDACTED]	
Condition Title VSC Activates intermittently						

Attachment 1: Parts Recovery Control Sheet

Orig Tracking

VIN



Doc No.



Do not type in SHADED fields. If the **Final Destination** field below is "scrap", properly dispose of the part.

Final Destination: N/A		SETR#:	CQE Eng:	N/A
Importer: (Applies to TMC Shipments Only)		Deliver to:		住所:
North America EDER Gr., Technical Dept. #1 Overseas Customer Service Technical Div. TOYOTA MOTOR CORPORATION Nisshin Education & Training Center 5-210, SAKAE, NISSHIN, AICH, 470-0113 Japan		Attn:		宛先:
		Tel:		Tel:
T-STAR				
Note: If this FTR contains more than one VIN, create a table in the report containing VIN, production date, and odometer				FOR CUSTOMS USE: Used Parts Value
1	Part # 1:	Part Description	Qty.	Used Part Value
	N/A		0	\$ 0.00
Comments:				
2	Part # 2:	Part Description	Qty.	Used Part Value
			0	\$ 0.00
Comments:				
3	Part # 3:	Part Description	Qty.	Used Part Value
			0	\$ 0.00
Comments:				
4	Part # 4:	Part Description	Qty.	Used Part Value
				\$.00
Comments:				
5	Part # 5:	Part Description	Qty.	Used Part Value
				\$.00
Comments:				
6	Part # 6:	Part Description	Qty.	Used Part Value
				\$.00
Comments:				
7	Part # 7:	Part Description	Qty.	Used Part Value
				\$.00
Comments:				
8	Part # 8:	Part Description	Qty.	Used Part Value
				\$.00
Comments:				

20041012700060

DEALERSHIP PRODUCT REPORT



TQCN DOC# PR-09149-2784	Affiliate TMS	Dept. QA-Chassis	Source MDT/DS	Dealer Code 09149	Ref 22367-1	Date 10/11/2004
Dealer Name FT. MYERS TOYOTA, INC.		Dealer City FT. MYERS		State FL	Region SET	
Primary Model Sequoia	Model Year 2004	Production Date 11-NOV-03	Odometer 14945 mi		VIN 5TDZT34A24S [REDACTED]	
Condition Title QA-Chassis: Brakes: 0						

Repair Date 04-OCT-2004	Optional Ref.	Applicable DTC Code(s) 0
----------------------------	---------------	-----------------------------

Condition Description

Will loose power while driving around corners.

Diagnostic Steps:

Checked wheel sensors. Technician states that the is no rust on the ABS reluctor ring, looks as rust comes from housing, and collects on surface of speed sensor.

Probable Cause

Rust on rear speed sensor, right side.

Part # 1: 895450C010	Part # 2:	Part # 3:	Parts Available on Request: Available upon request	Parts Shipping Destination:
-------------------------	-----------	-----------	---	-----------------------------

Repair Process

Replaced right sensor.

DEALERSHIP PRODUCT REPORT



TQCN DOC# PR-09149-2784	Affiliate TMS	Dept. QA-Chassis	Source MDT/DS	Dealer Code 09149	Ref 22367-1	Date 10/11/2004
Dealer Name FT. MYERS TOYOTA, INC.		Dealer City FT. MYERS		State FL	Region SET	
Primary Model Sequoia	Model Year 2004	Production Date 11-NOV-03	Odometer 14945 mi	VIN 5TDZT34A24S [REDACTED]		
Condition Title QA-Chassis: Brakes: 0						

Attachment 1: Parts Recovery Control Sheet

Do not type in SHADED fields. If the **Final Destination** field below is "scrap", properly dispose of the part.

Orig
Tracking

VIN



Doc No.



Final Destination:		SETR#:	CQE Eng:	N/A
Importer: (Applies to TMC Shipments Only)		Deliver to:	住所:	
North America EDER Gr., Technical Dept. #1 Overseas Customer Service Technical Div. TOYOTA MOTOR CORPORATION Nisshin Education & Training Center 5-210, SAKAE, NISSHIN, AICH, 470-0113 Japan		Attn:	宛先:	
		Tel:	Tel:	
T-STAR				
Note: If this FTR contains more than one VIN, create a table in the report containing VIN, production date, and odometer				FOR CUSTOMS USE: Used Parts Value
1	Part # 1: 895450C010	Part Description SENSOR, SPEED, RR RH	Qty. 1	Used Part Value \$ 27 .00
	Comments:			
2	Part # 2:	Part Description	Qty. 0	Used Part Value \$ 0 .00
	Comments:			
3	Part # 3:	Part Description	Qty. 0	Used Part Value \$ 0 .00
	Comments:			
4	Part # 4:	Part Description	Qty.	Used Part Value \$.00
	Comments:			
5	Part # 5:	Part Description	Qty.	Used Part Value \$.00
	Comments:			
6	Part # 6:	Part Description	Qty.	Used Part Value \$.00
	Comments:			
7	Part # 7:	Part Description	Qty.	Used Part Value \$.00
	Comments:			

20041125900060

DEALERSHIP PRODUCT REPORT

TQCN DOC# PR-09149-3094	Affiliate TMS	Dept. QA-Chassis	Source MDT/DS	Dealer Code 09149	Ref 22367-1	Date 11/24/2004
Dealer Name FT. MYERS TOYOTA, INC.		Dealer City FT. MYERS		State FL	Region SET	
Primary Model Sequoia	Model Year 2004	Production Date 11-NOV-03	Odometer 16483 mi	VIN 5TDZT34A24S [REDACTED]		
Condition Title QA-Chassis: Brakes: 0						

Repair Date 02-NOV-2004	Optional Ref.	Applicable DTC Code(s)
-----------------------------------	---------------	------------------------

Condition Description

Lost power on right turns

Diagnostic Steps:

ck speed sensors

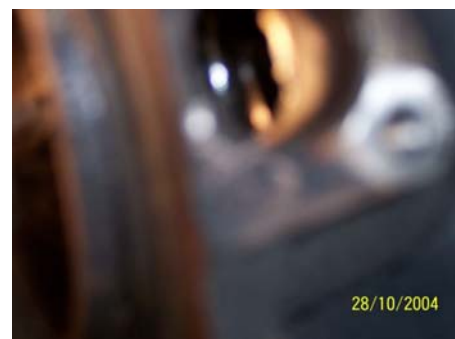
Probable Cause

Rust on the rear speed sensor tips. Water is getting into the tube. Rust then develops.

Part # 1: 9671131080	Part # 2:	Part # 3:	Parts Available on Request:	Parts Shipping Destination:
-------------------------	-----------	-----------	-----------------------------	-----------------------------

Repair Process

Cleaned rust off inside of axle tube. Cleaned and painted inside of tube. Replace axle tube o-rings. Put FIPG around tube and sensor o-rings.



DEALERSHIP PRODUCT REPORT



TQCN DOC# PR-09149-3094	Affiliate TMS	Dept. QA-Chassis	Source MDT/DS	Dealer Code 09149	Ref 22367-1	Date 11/24/2004
Dealer Name FT. MYERS TOYOTA, INC.		Dealer City FT. MYERS		State FL	Region SET	
Primary Model Sequoia	Model Year 2004	Production Date 11-NOV-03	Odometer 16483 mi	VIN 5TDZT34A24S [REDACTED]		
Condition Title QA-Chassis: Brakes: 0						

Attachment 1: Parts Recovery Control Sheet

Orig Tracking

VIN



Doc No.



Do not type in SHADED fields. If the **Final Destination** field below is "scrap", properly dispose of the part.

Final Destination:		SETR#:	CQE Eng:	N/A
Importer: (Applies to TMC Shipments Only)		Deliver to:	住所:	
North America EDER Gr., Technical Dept. #1 Overseas Customer Service Technical Div. TOYOTA MOTOR CORPORATION Nisshin Education & Training Center 5-210, SAKAE, NISSHIN, AICH, 470-0113 Japan		Attn:	宛先:	
		Tel:	Tel:	
T-STAR				
Note: If this FTR contains more than one VIN, create a table in the report containing VIN, production date, and odometer				FOR CUSTOMS USE: Used Parts Value
1	Part # 1: 9671131080	Part Description RING, O	Qty. 2	Used Part Value \$ 1.00
	Comments:			
2	Part # 2:	Part Description	Qty. 0	Used Part Value \$ 0.00
	Comments:			
3	Part # 3:	Part Description	Qty. 0	Used Part Value \$ 0.00
	Comments:			
4	Part # 4:	Part Description	Qty.	Used Part Value \$.00
	Comments:			
5	Part # 5:	Part Description	Qty.	Used Part Value \$.00
	Comments:			
6	Part # 6:	Part Description	Qty.	Used Part Value \$.00
	Comments:			
7	Part # 7:	Part Description	Qty.	Used Part Value \$.00
	Comments:			

20050607100060

TQCN DOC# FTR-5UA215251		Affiliate TMS	Dept. QA-Chassis	Source FTS	Location TMS-SET	Ref 22367-1	Date 6/6/2005
Problem Area Base Vehicle	Primary Model Sequoia		Model Year 2003	Production Date 04-Apr-2003	Odometer 50062 mi	VIN (confirm 17 characters): 5TDZT34A63S [REDACTED]	
Condition Title Wheel speed sensor rust							

Do not type in YELLOW shaded fields - Input data from Web page or RDM:				
Repair Date	Optional Ref.	Optional Approval		
05/31/2005				
Condition Description				
Customer states VSC, TRAC and ABS will activate at times.				
Diagnostic Steps:				
The condition was not duplicated. An inspection of the vehicle speed sensors revealed rust build up on the rear wheel speed sensors and the speed sensor rotors. There was a greater rust build up on the right rear sensor.				
Probable Cause				
Unknown				
Part # 1:	Part # 2:	Part # 3:	Parts Disposition:	Parts Shipping Destination:
895450C010	895460C010		Have part / will ship	CQEC
Repair Process				
Clean the rust from the rear axle housing, clean the rust from the speed sensor rotors and replace the rear speed sensors.				



Right rear speed sensor

TQCN DOC# FTR-5UA215251		Affiliate TMS	Dept. QA-Chassis	Source FTS	Location TMS-SET	Ref 22367-1	Date 6/6/2005
Problem Area Base Vehicle	Primary Model Sequoia		Model Year 2003	Production Date 04-Apr-2003	Odometer 50062 mi	VIN (confirm 17 characters): 5TDZT34A63S [REDACTED]	
Condition Title Wheel speed sensor rust							



Right speed sensor rotor



Right axle housing rust

Attachment 1: Parts Recovery Control Sheet

Do not type in SHADED fields. If the **Final Destination** field below is "scrap", properly dispose of the part.

Orig Tracking

VIN



Doc No.



Final Destination: CQEC	SETR#:	CQE Eng:	N/A
Importer: (Applies to TMC Shipments Only) North America EDER Gr., Technical Dept. #1 Overseas Customer Service Technical Div.	Deliver to: Attn:	住所:	

FIELD TECHNICAL REPORT



TQCN DOC# FTR-5UA215251		Affiliate TMS	Dept. QA-Chassis	Source FTS	Location TMS-SET	Ref 22367-1	Date 6/6/2005
Problem Area Base Vehicle	Primary Model Sequoia		Model Year 2003	Production Date 04-Apr-2003	Odometer 50062 mi	VIN (confirm 17 characters): 5TDZT34A63S [REDACTED]	
Condition Title Wheel speed sensor rust							

TOYOTA MOTOR CORPORATION Nisshin Education & Training Center 5-210, SAKAE, NISSHIN, AICH, 470-0113 Japan	Tel:	宛先 : Tel:
---	------	------------------

T-STAR		
--------	--	--

Note: If this FTR contains more than one VIN, create a table in the report containing VIN, production date, and odometer

FOR CUSTOMS USE:
Used Parts Value

	Part #	Part Description	Qty.	Used Part Value
1	895450C010 Comments:	SENSOR, SPEED, RR RH	1	\$ 27 .00
2	895460C010 Comments:	SENSOR, SPEED, RR LH	1	\$ 27 .00
3	 Comments:		0	\$ 0 .00
4	 Comments:			\$.00
5	 Comments:			\$.00
6	 Comments:			\$.00
7	 Comments:			\$.00
8	 Comments:			\$.00

20050706900080

FIELD TECHNICAL REPORT

TQCN DOC# FTR-VOA218151		Affiliate TMS	Dept. QA-Chassis	Source FPE	Location REG-SET	Ref 22367-1	Date 7/5/2005
Problem Area Base Vehicle	Primary Model Sequoia	Model Year 2004	Production Date 08-2003	Odometer 25086 mi	VIN (confirm 17 characters): 5TDZT38A34S [REDACTED]		
Condition Title ABS speed sensor contaminated							

Do not type in YELLOW shaded fields - Input data from Web page or RDM:

Repair Date	Optional Ref.	Optional Approval
-------------	---------------	-------------------

Condition Description

Customer states TRAC light illuminates and ABS actuates intermittently while driving.

Diagnostic Steps:

Tech was not able duplicate condition, but has experienced this condition on other Sequoias. No DTC. Tech found contamination on rear ABS speed sensors.

Probable Cause

Unknown

Part # 1: 895460C020	Part # 2:	Part # 3:	Parts Disposition: Have part / will ship	Parts Shipping Destination: CQEC
-------------------------	-----------	-----------	---	-------------------------------------

Repair Process

Tech replaced left rear ABS speed sensor and cleaned the contamination (rust) off of the right rear ABS speed sensor.



Contamination on speed sensor.

Attachment 1: PRCS

FIELD TECHNICAL REPORT



TQCN DOC# FTR-VOA218151		Affiliate TMS	Dept. QA-Chassis	Source FPE	Location REG-SET	Ref 22367-1	Date 7/5/2005
Problem Area Base Vehicle	Primary Model Sequoia		Model Year 2004	Production Date 08-2003	Odometer 25086 mi	VIN (confirm 17 characters): 5TDZT38A34S [REDACTED]	
Condition Title ABS speed sensor contaminated							



Attachment 1: Parts Recovery Control Sheet

Do not type in SHADED fields. If the **Final Destination** field below is "scrap", properly dispose of the part.

Orig Tracking 

VIN 

Doc No. 

Final Destination: CQEC		SETR#:	CQE Eng:	N/A
Importer: (Applies to TMC Shipments Only)		Deliver to:	住所:	
North America EDER Gr., Technical Dept. #1 Overseas Customer Service Technical Div. TOYOTA MOTOR CORPORATION Nisshin Education & Training Center 5-210, SAKAE, NISSHIN, AICH, 470-0113 Japan		Attn:	宛先:	
		Tel:	Tel:	
T-STAR				
Note: If this FTR contains more than one VIN, create a table in the report containing VIN, production date, and odometer				FOR CUSTOMS USE: Used Parts Value
1	Part # 1: 895460C020	Part Description	Qty. 1	Used Part Value \$ 0.00
	Comments:			
2	Part # 2:	Part Description	Qty. 0	Used Part Value \$ 0.00
	Comments:			
3	Part # 3:	Part Description	Qty. 0	Used Part Value \$ 0.00
	Comments:			
4	Part # 4:	Part Description	Qty.	Used Part Value \$.00
	Comments:			
5	Part # 5:	Part Description	Qty.	Used Part Value \$.00
	Comments:			
6	Part # 6:	Part Description	Qty.	Used Part Value \$.00
	Comments:			
7	Part # 7:	Part Description	Qty.	Used Part Value \$.00
	Comments:			
8	Part # 8:	Part Description	Qty.	Used Part Value \$.00
	Comments:			

FIELD TECHNICAL REPORT

TQCN DOC# FTR-VOA218151	Affiliate TMS	Dept. QA-Chassis	Source FPE	Location REG-SET	Ref 22367-1	Date 7/5/2005
Problem Area Base Vehicle	Primary Model Sequoia	Model Year 2004	Production Date 08-2003	Odometer 25086 mi	VIN (confirm 17 characters): 5TDZT38A34S [REDACTED]	
Condition Title ABS speed sensor contaminated						