

MFD BY DAIMLERCHRYSLER CORPORATION

DATE OF MFR
7-00

GWR
2994 KG(06600 LB)

GWR FRONT
1754 KG(3865 LB)

WITH TIRES
P245/75R16

RIMS AT
16X7

COLD
241 KPA(35 PSI)

GWR REAR
1770 KG(3900 LB)

WITH TIRES
P245/75R16

RIMS AT
16X7

COLD
241 KPA(35 PSI)

THIS VEHICLE CONFORMS TO ALL APPLICABLE FEDERAL MOTOR VEHICLE SAFETY AND THEFT PREVENTION STANDARDS IN EFFECT ON THE DATE OF MANUFACTURE SHOWN ABOVE.

VIN: 3B7HF13Y810

TYPE:

TRUCK

SINGLE X DUAL



MDH: 071722 745AA PKT:PW7

VEHICLE MADE IN MEXICO TRM:R1C3 4648507







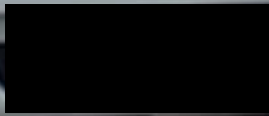
DODGE

4x4



DODGE

4x4







0 30271511



1998-1999
1999-2000
2000-2001
2001-2002
2002-2003
2003-2004
2004-2005
2005-2006
2006-2007
2007-2008
2008-2009
2009-2010
2010-2011
2011-2012
2012-2013
2013-2014
2014-2015
2015-2016
2016-2017
2017-2018
2018-2019
2019-2020
2020-2021
2021-2022
2022-2023
2023-2024
2024-2025

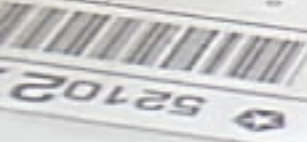




THIS VEHICLE CONFORMS TO NHTSA REGULATIONS APPLICABLE TO 2007 MODEL YEAR NEW LIGHT-DUTY VEHICLES.

- * BASIC IGNITION TIMING AND FUEL FLOW AIR Mixture have been preset at the factory. See the service manual for proper procedures and other additional information.
- * ADJUSTMENTS MADE BY OTHER THAN APPROVED SERVICE MANUAL PROCEDURES MAY VIOLATE FEDERAL AND STATE LAWS.

CAUTION: APPLY PARKING BRAKE WHEN SERVICING VEHICLE.



5R102

VEHICLE COMPONENTS TO
TO 2021 MODEL YEAR VEHICLES
SEE "BRAKING AND IDLE FUEL AIR MIXTURE"
ADJUSTMENTS MADE BY OTHER THAN APPROVED SERVICE MANU-
FACTURERS MAY VIOLATE FEDERAL AND STATE LAWS
CAUTION: APPLY PARKING BRAKE WHEN SERVICING VEHICLE



BELT ROUTING



NO
A/C

53008745



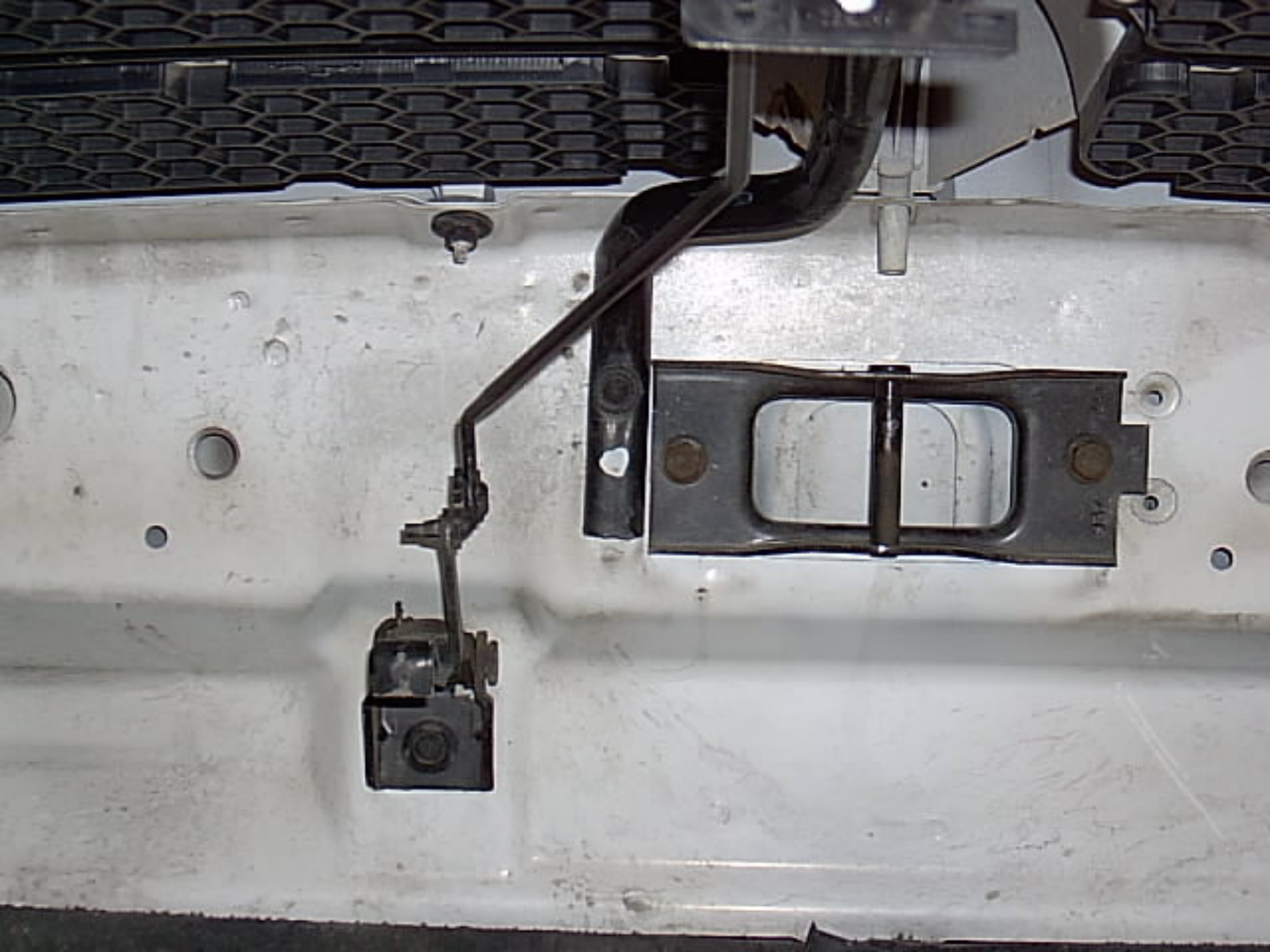
☆ 52102745AA



THIS VEH
T

- BASIC IG
PRESET
PROCED
- ADJUST
PROCED
- CAUTION











MODIFICATIONS

THESE MODIFICATIONS
AS APPROPRIATE, BY SP

THE FOLLOWING MODIFICATIONS HAVE BEEN MADE:

2004 P-C-200

76028544 HC













DaimlerChrysler AUTHORIZED MODIFICATIONS THESE MODIFICATIONS HAVE BEEN APPROVED
AT APPROPRIATE B, IMA AND CASE.

THE FOLLOWING MODIFICATIONS HAVE BEEN MADE:

UPDATE
PCM

CHANGE AUTHORITY

DEALER CODE

DATE

TS/B 110621-42167 12-22

62210867.0



