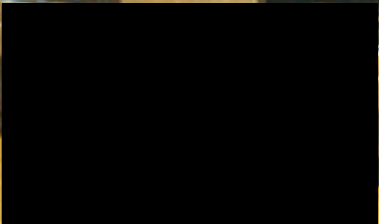




5867

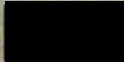
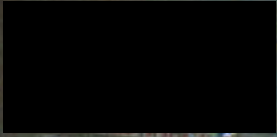
4279

2437





DODGE



MFD BY DAIMLERCHRYSLER CORPORATION

DATE OF MFG 3-81

GVW 2902 KG (6400 LB)

GVWR FRONT

WITH TIRES

2100 KG

4625 LB

1856 KG (4100 LB)

P225/75R15XL

1507

3321 (740 KG) PER

GVWR REAR

WITH TIRES

2100 KG

4625 LB

1727 KG (3800 LB)

P225/75R15XL

1507

3321 (740 KG) PER

THIS VEHICLE CONFORMS TO ALL APPLICABLE FEDERAL MOTOR VEHICLE SAFETY AND THEFT PREVENTION STANDARDS IN EFFECT ON THE DATE OF MANUFACTURE SHOWN ABOVE.

VIN: 3B7HC13Y2



REG:

TRUCK

SINGLE R. DR.



MOH: 831500 95298

INT-P10

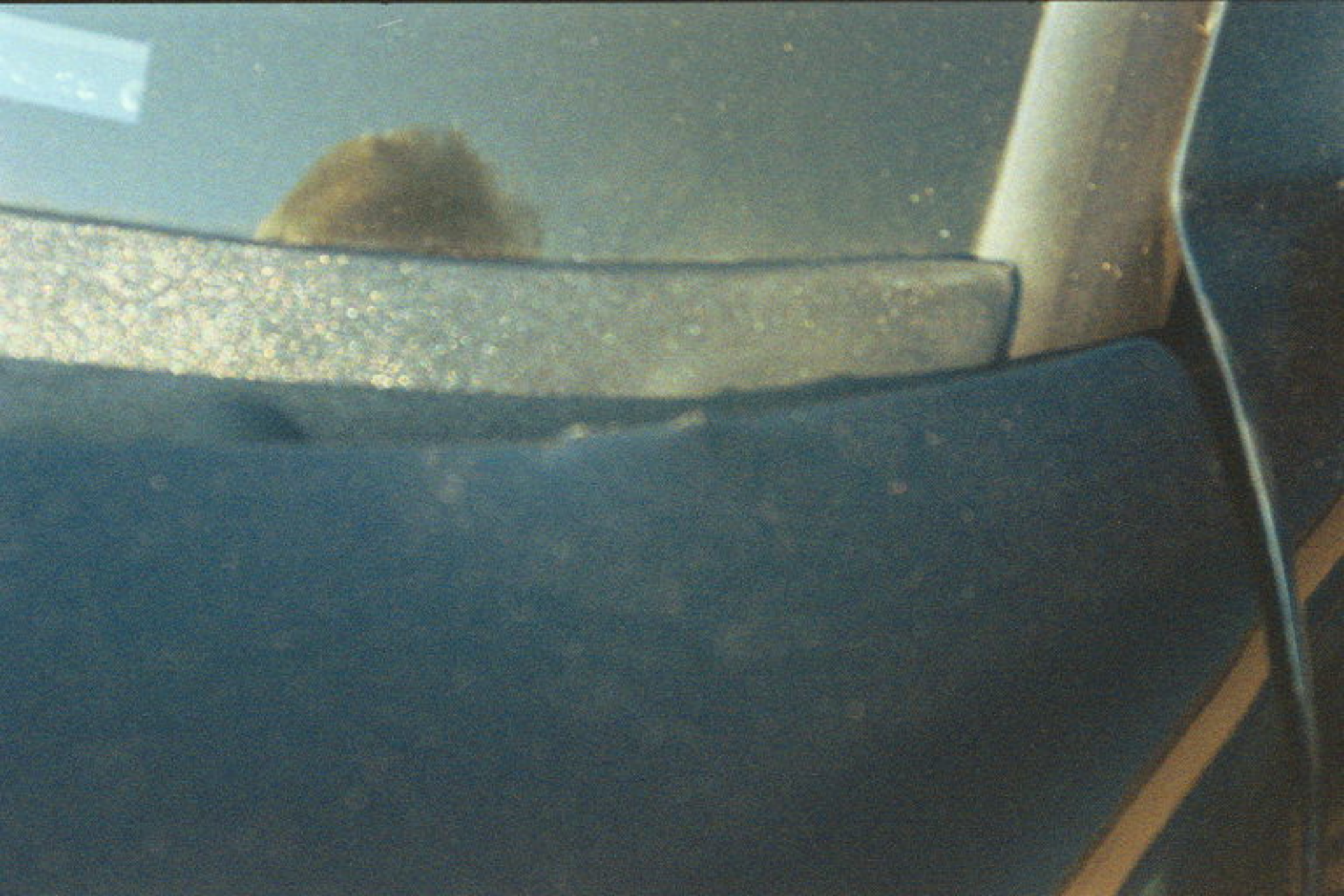
VEHICLE MADE IN MEXICO TM 3042

8463

RPM X 100











52102952AB



DaimlerChrysler Corporation  
IMPORTANT VEHICLE INFORMATION

THIS VEHICLE CONFORMS TO U.S. EPA REGULATIONS APPLICABLE TO 2001 MODEL YEAR NEW LIGHT-DUTY TRUCKS AND CALIFORNIA REGULATIONS APPLICABLE TO 2001 MODEL YEAR NEW MEDIUM-DUTY VEHICLES.

- \* BASIC IGNITION TIMING AND IDLE FUEL/AIR MIXTURE HAVE BEEN PRESET AT THE FACTORY. SEE THE SERVICE MANUAL FOR PROPER PROCEDURES AND OTHER ADDITIONAL INFORMATION.
  - o ADJUSTMENTS MADE BY OTHER THAN APPROVED SERVICE MANUAL PROCEDURES MAY VIOLATE FEDERAL AND STATE LAWS.
- CAUTION: APPLY PARKING BRAKE WHEN SERVICING VEHICLE.

1CRXETU5.05B1  
1CRXE01740DL  
SPARK PLUGS  
RC12LC4  
.040 in. GAP

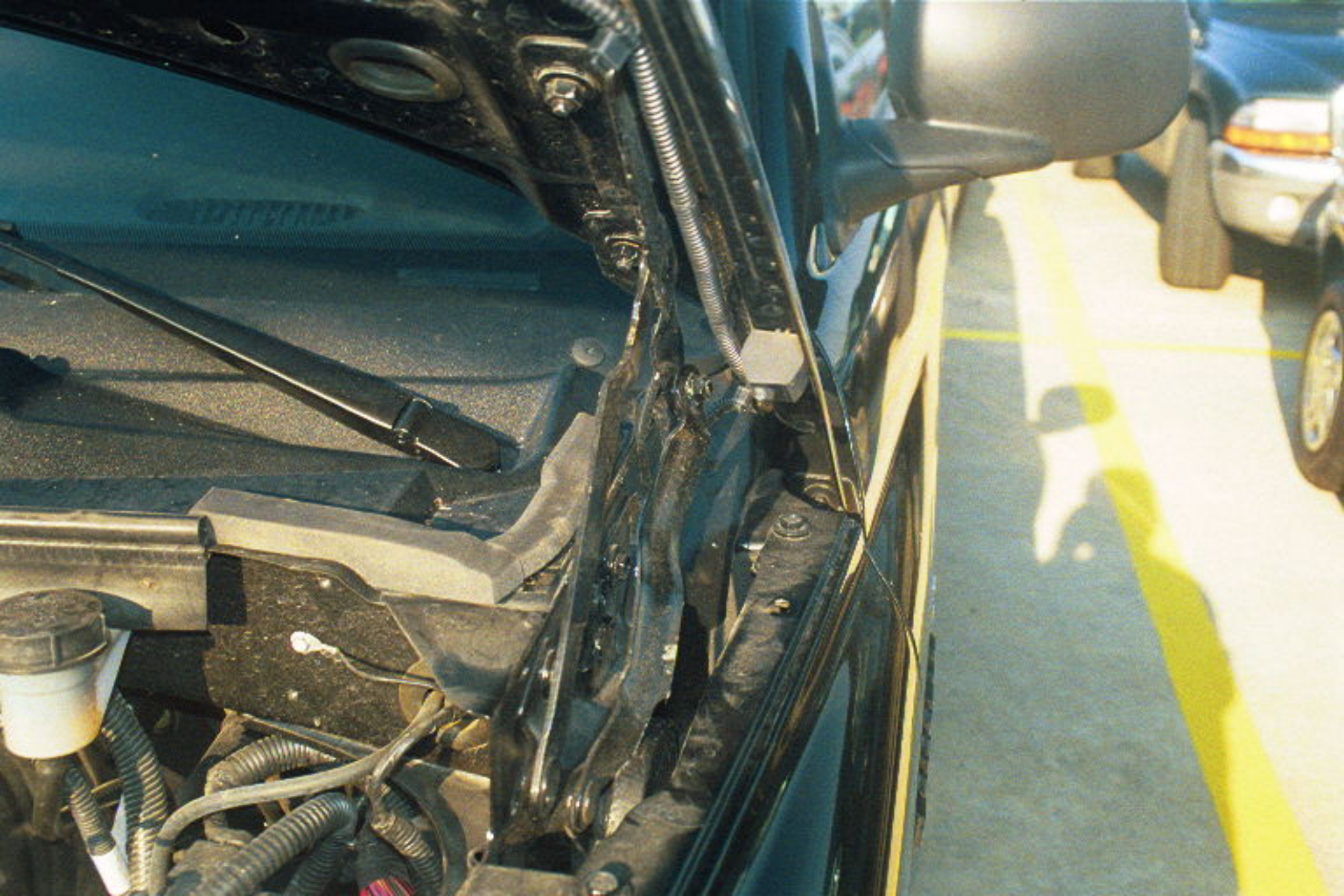
CATAL



32 P



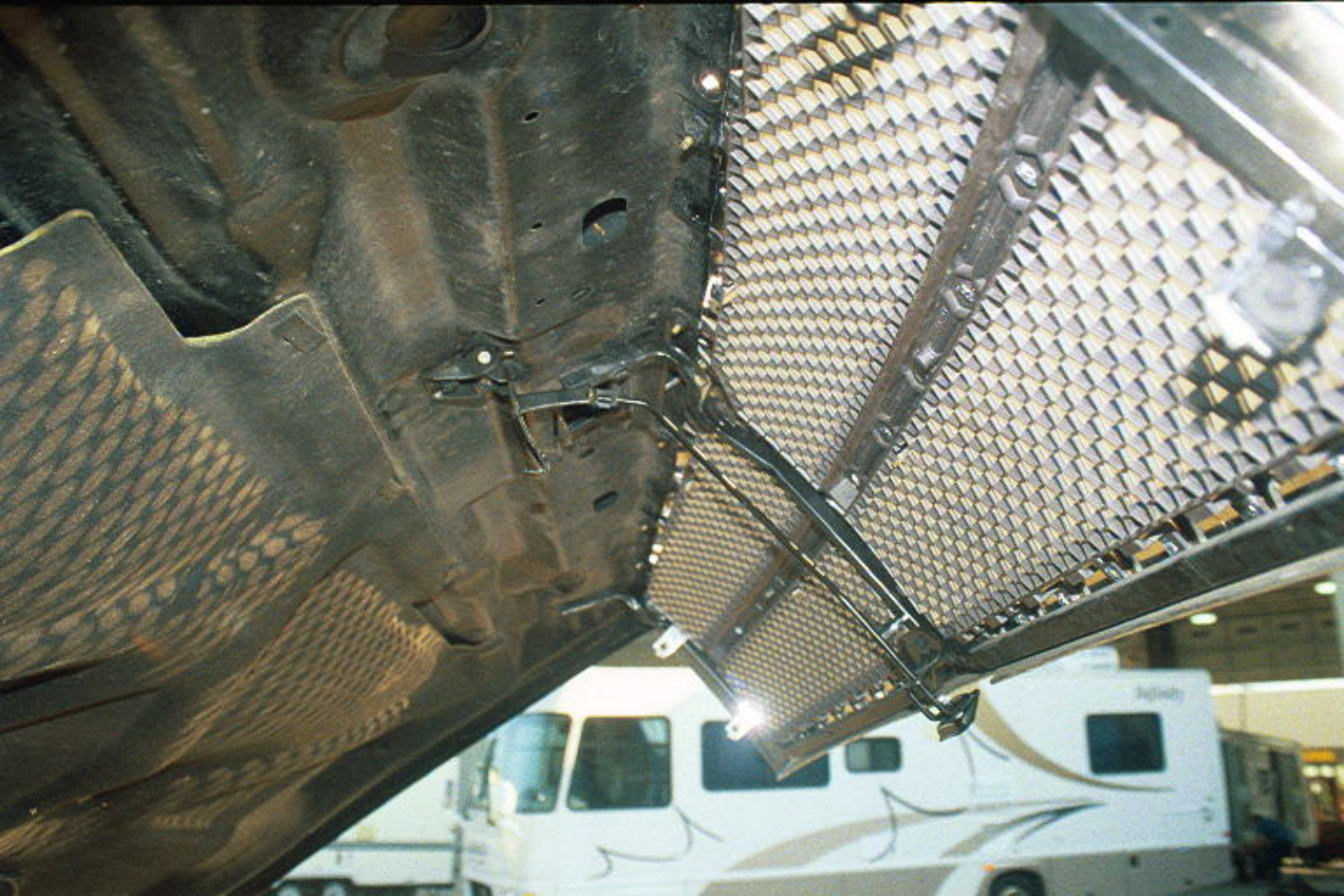














0 12 12 2005 2AB

DaimlerChrysler Corporation  
IMPORTANT VEHICLE INFORMATION

THIS VEHICLE CONFORMS TO U.S. EPA REGULATIONS APPLICABLE TO 2007 MODEL YEAR NEW LIGHT-DUTY TRUCKS AND CALIFORNIA REGULATIONS APPLICABLE TO 2007 MODEL YEAR NEW MEDIUM-DUTY VEHICLES.



\* BASIC OPERATION THINGS AND OILS REL. AIR INTAKE UNIT BEING PRESENT AT THE FACTORY. SEE THE SERVICE MANUAL FOR MORE PRECAUTIONS AND OTHER ADDITIONAL INFORMATION.

† ADJUSTMENTS MADE BY OTHER THAN APPROVED SERVICE MANUAL PROCEDURES MAY VIOLATE FEDERAL AND STATE LAWS.

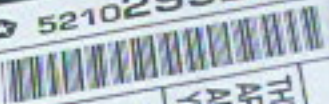
CAUTION: ALWAYS WEAR YOUR SEATBELT WHEN DRIVING THIS VEHICLE.

1.2.2005  
 2007.001  
 2007.001  
 2007.001  
 2007.001  
 2007.001

**CATALYST**


52102952AB



DaimlerChrysler Corporation  
IMPORTANT VEHICLE INFORMATION

THIS VEHICLE CONFORMS TO U.S. EPA REGULATIONS  
APPLICABLE TO 2001 MODEL YEAR NEW LIGHT-DUTY TRUCKS  
AND CALIFORNIA REGULATIONS APPLICABLE TO 2001 MODEL  
YEAR NEW MEDIUM-DUTY VEHICLES.

- BASIC IGNITION TIMING AND IDLE FUEL/AIR Mixture HAVE BEEN  
PRESET AT THE FACTORY. SEE THE SERVICE MANUAL FOR PROCEDURES  
PROCEDURES AND OTHER ADDITIONAL INFORMATION.
  - ADJUSTMENTS MADE BY OTHER THAN APPROVED SERVICE MANUAL  
PROCEDURES MAY VIOLATE FEDERAL AND STATE LAWS.
- CAUTION: APPLY PARKING BRAKE WHEN SERVICING VEHICLE.

1-800-4-A-DODGE  
 VINYLITE SEAT  
 VINYLITE SEAT  
 SEAT BELT  
 NO. 10111  
 2001 4-Door

CATAL



ROUTING

NO  
A/C



53008745

♻️ 52102952AB



THIS  
APPL  
AND  
YEAR

• BA  
PR  
PR  
AD  
PH  
C

HOOD

