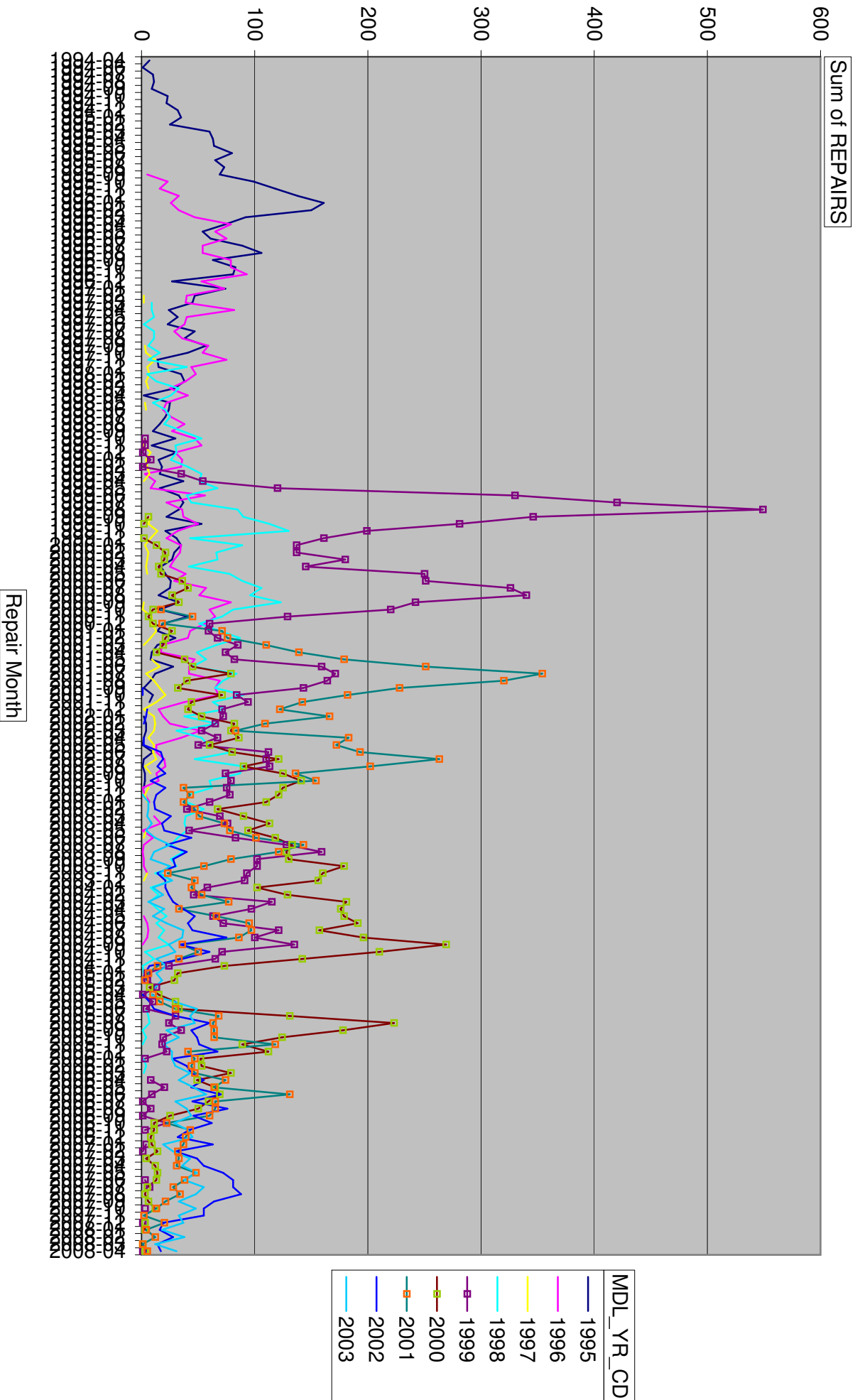
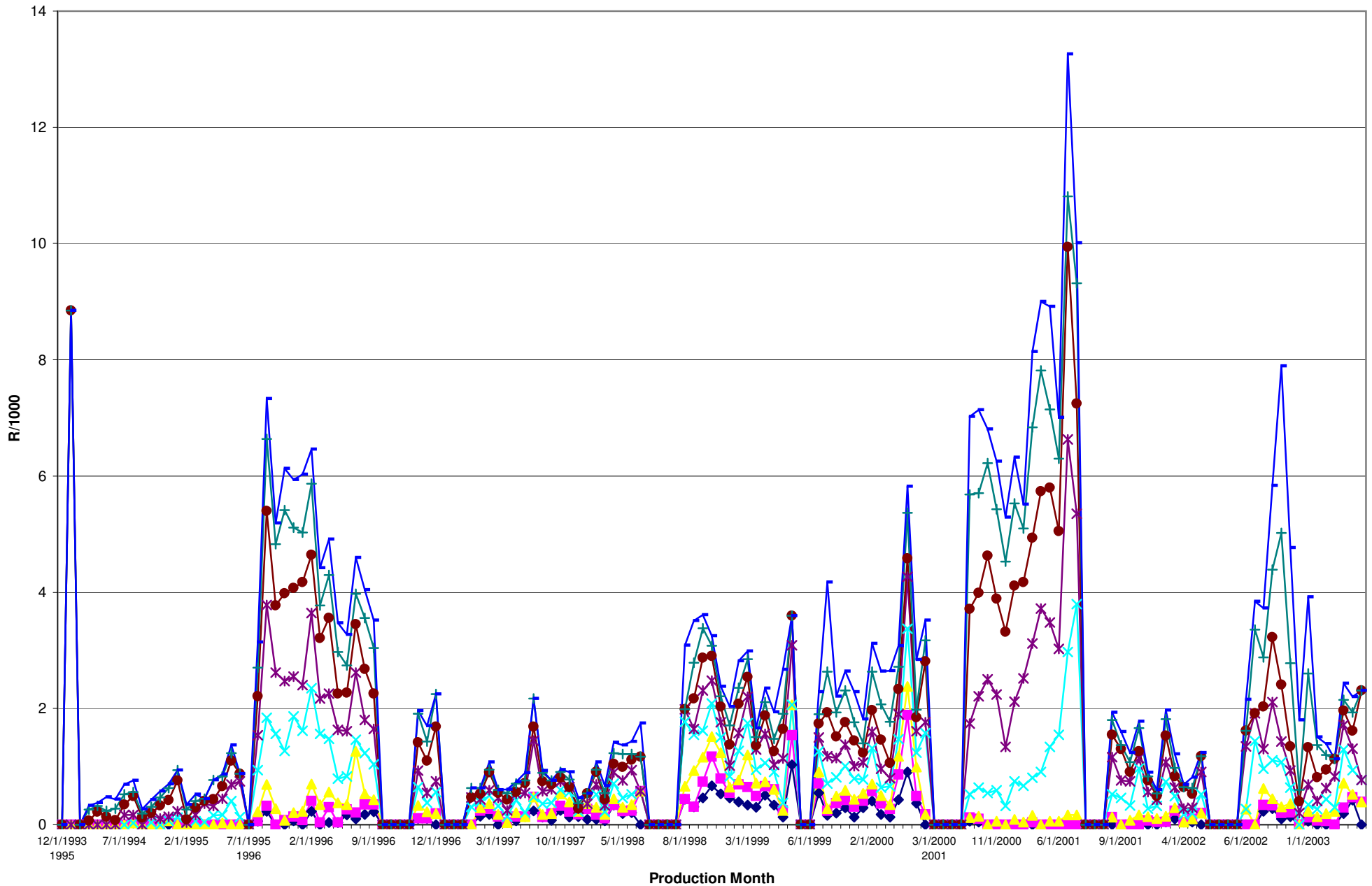
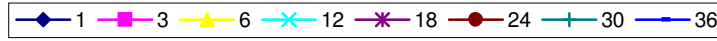


9F924 AWS



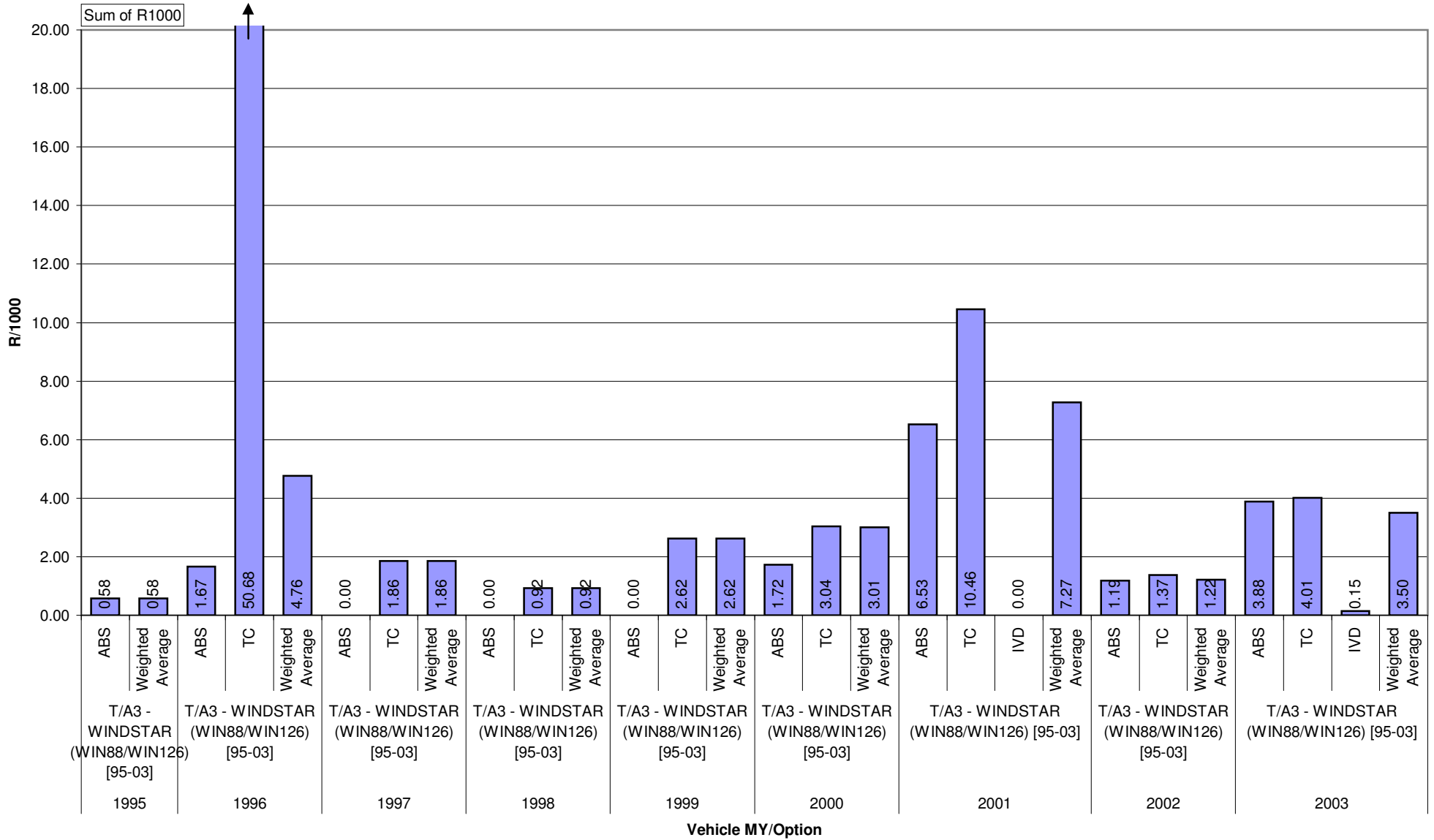
# Windstar ECU (2B373 or 2C219) Trend Chart

WEIGHTED VEHICLE ECU WARRANTY  
PRODUCT INDEPENDANT



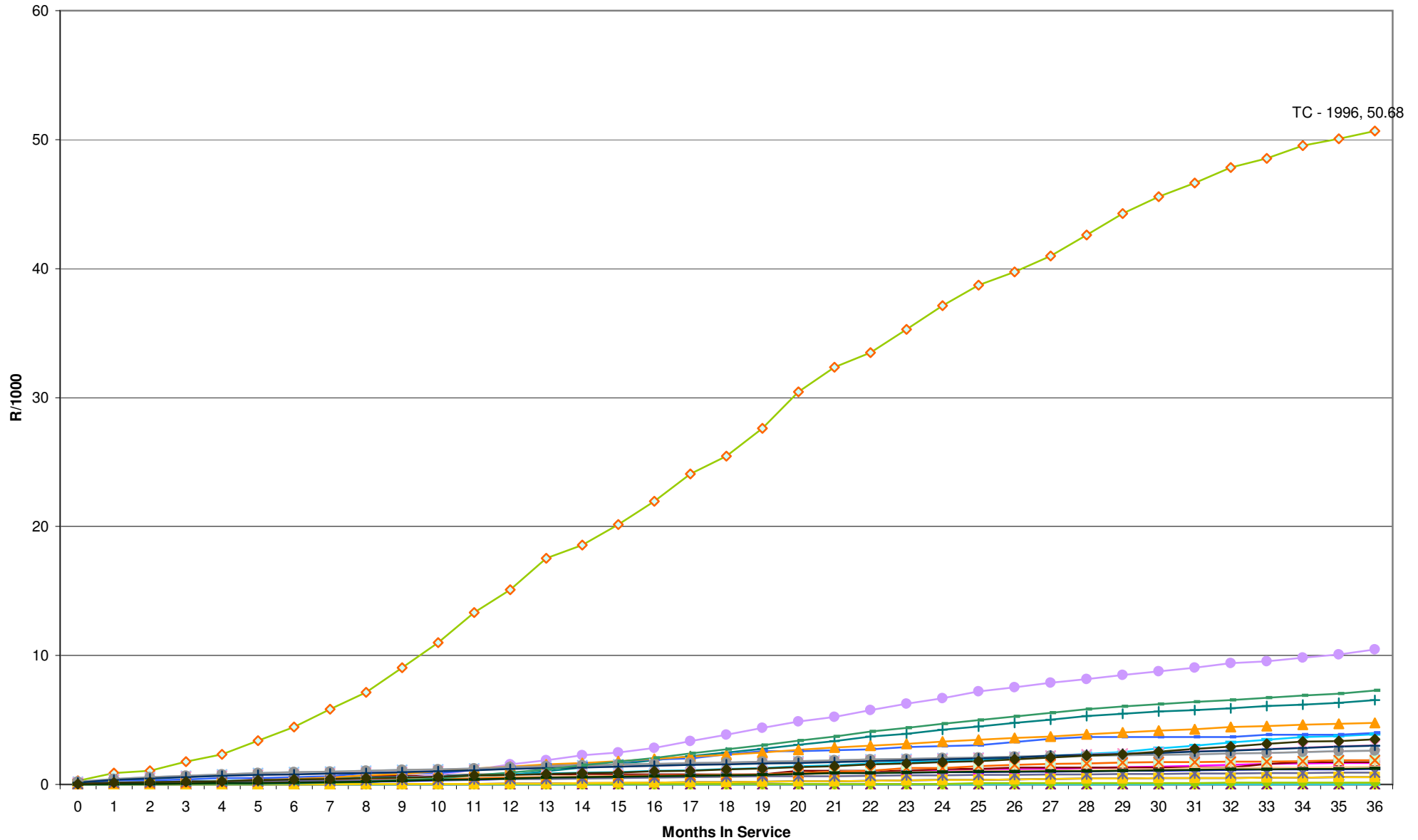
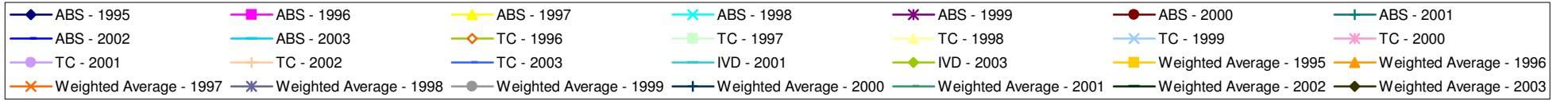
### Windstar ECU (2B373 or 2C219) Comparison @ 36 MIS

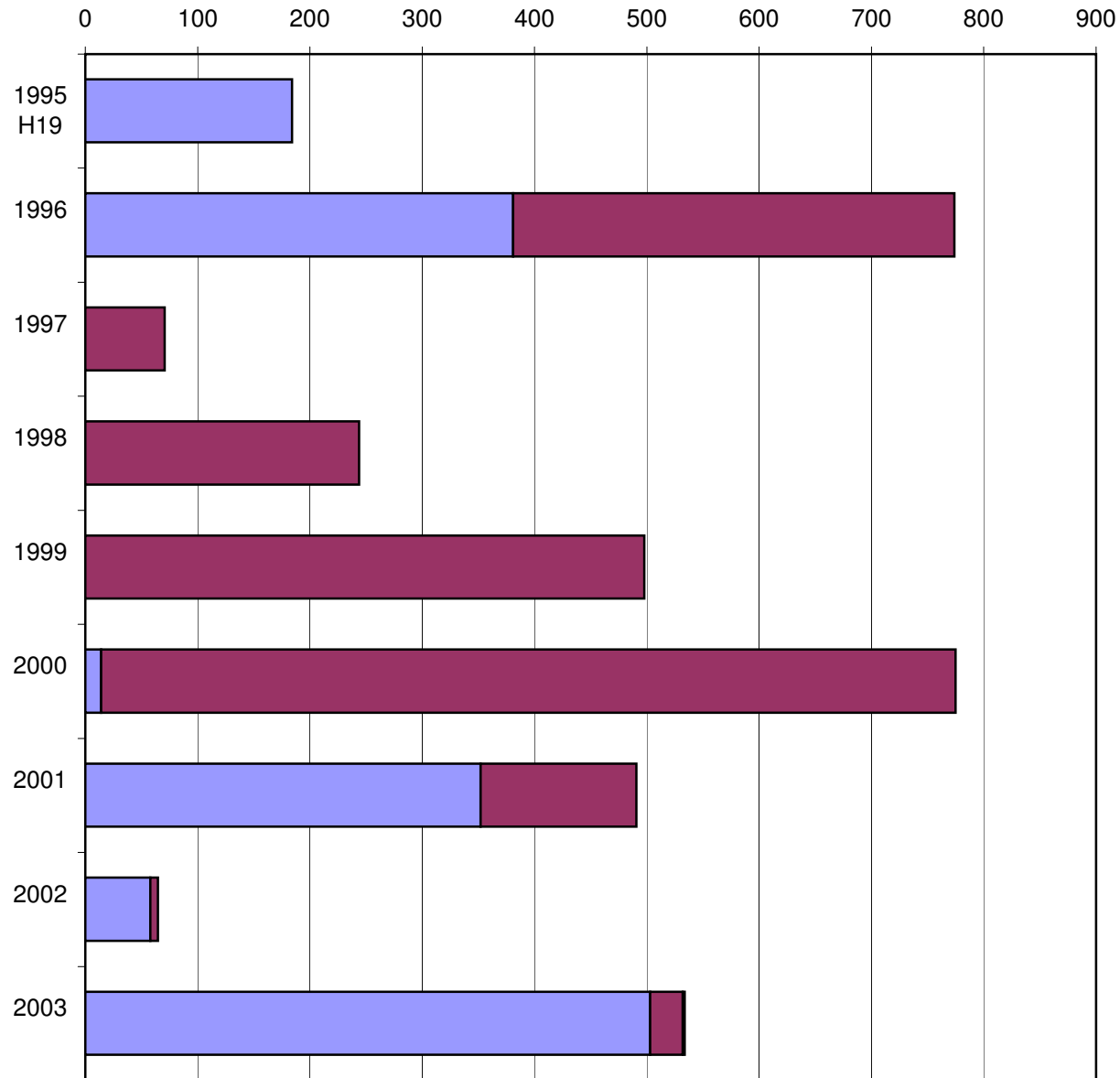
Part  
 ■ ECU (2B373 or 2C219)



MODEL YEAR | Vehicle Line [VL2] | Option Code2

Windstar ECU (2B373 or 2C219) Growth Chart





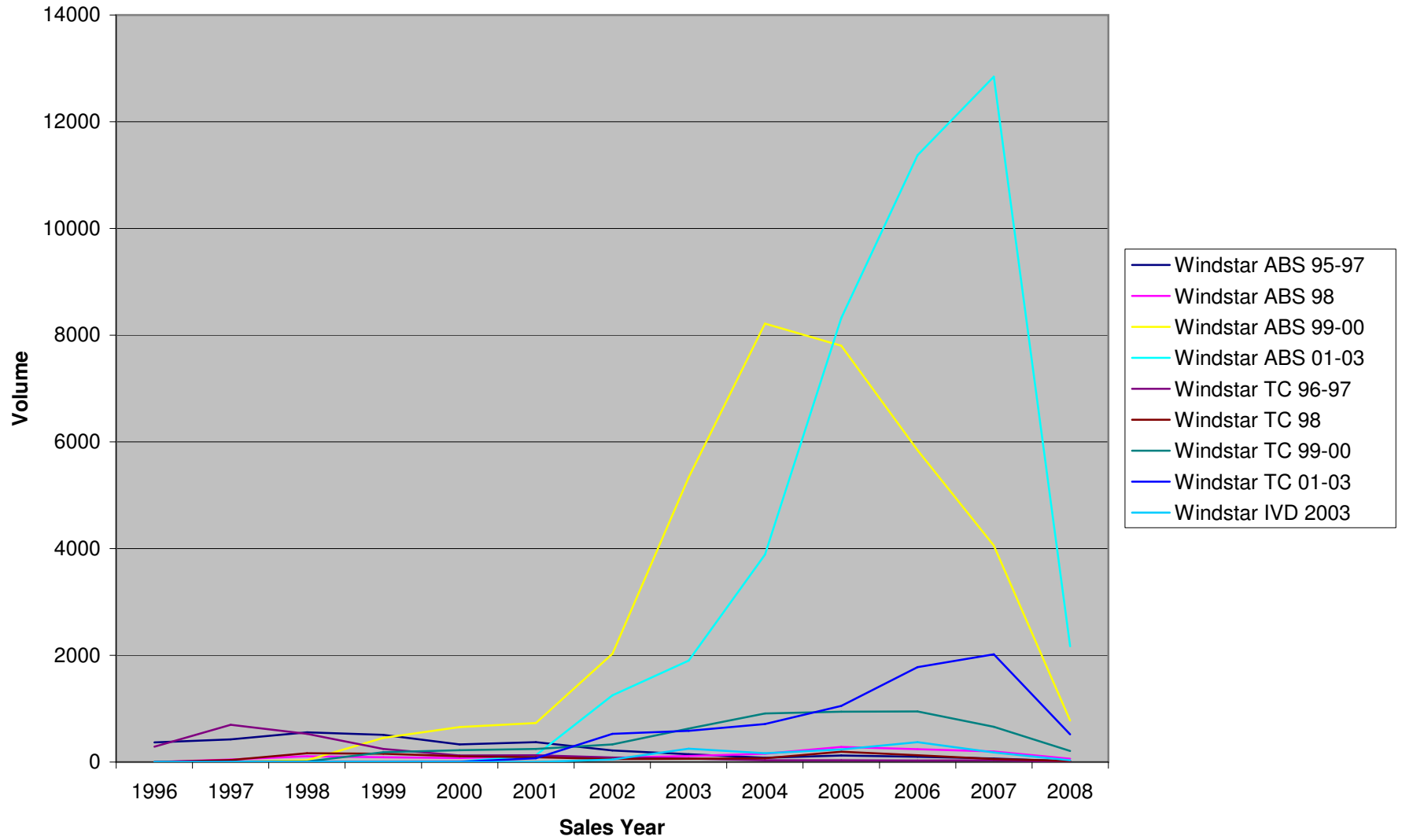
- WINDSTAR (WIN88/WIN126) [95-03] - BRAKE-ABS WARNING LIGHT TROUBLES - ABS
- WINDSTAR (WIN88/WIN126) [95-03] - BRAKE-ABS WARNING LIGHT TROUBLES - TC
- WINDSTAR (WIN88/WIN126) [95-03] - BRAKE-ABS WARNING LIGHT TROUBLES - IVD

Windstar ECU (2B373 or 2C219) Comparison @ 36 MIS

PROD_MQ	(blank)
TIS	36

Sum of R1000			Part
MODEL YR	Vehicle Line [VL]2	Option Code2	ECU (2B373 or 2C219)
1995	T/A3 - WINDSTAR (WIN88/WIN126) [95	ABS	0.58
		Weighted Average	0.58
1996	T/A3 - WINDSTAR (WIN88/WIN126) [95	ABS	1.67
		TC	50.68
		Weighted Average	4.76
1997	T/A3 - WINDSTAR (WIN88/WIN126) [95	ABS	0.00
		TC	1.86
		Weighted Average	1.86
1998	T/A3 - WINDSTAR (WIN88/WIN126) [95	ABS	0.00
		TC	0.92
		Weighted Average	0.92
1999	T/A3 - WINDSTAR (WIN88/WIN126) [95	ABS	0.00
		TC	2.62
		Weighted Average	2.62
2000	T/A3 - WINDSTAR (WIN88/WIN126) [95	ABS	1.72
		TC	3.04
		Weighted Average	3.01
2001	T/A3 - WINDSTAR (WIN88/WIN126) [95	ABS	6.53
		TC	10.46
		IVD	0.00
		Weighted Average	7.27
2002	T/A3 - WINDSTAR (WIN88/WIN126) [95	ABS	1.19
		TC	1.37
		Weighted Average	1.22
2003	T/A3 - WINDSTAR (WIN88/WIN126) [95	ABS	3.88
		TC	4.01
		IVD	0.15
		Weighted Average	3.50

### 1995-2003MY Windstar ABS ECU Sales



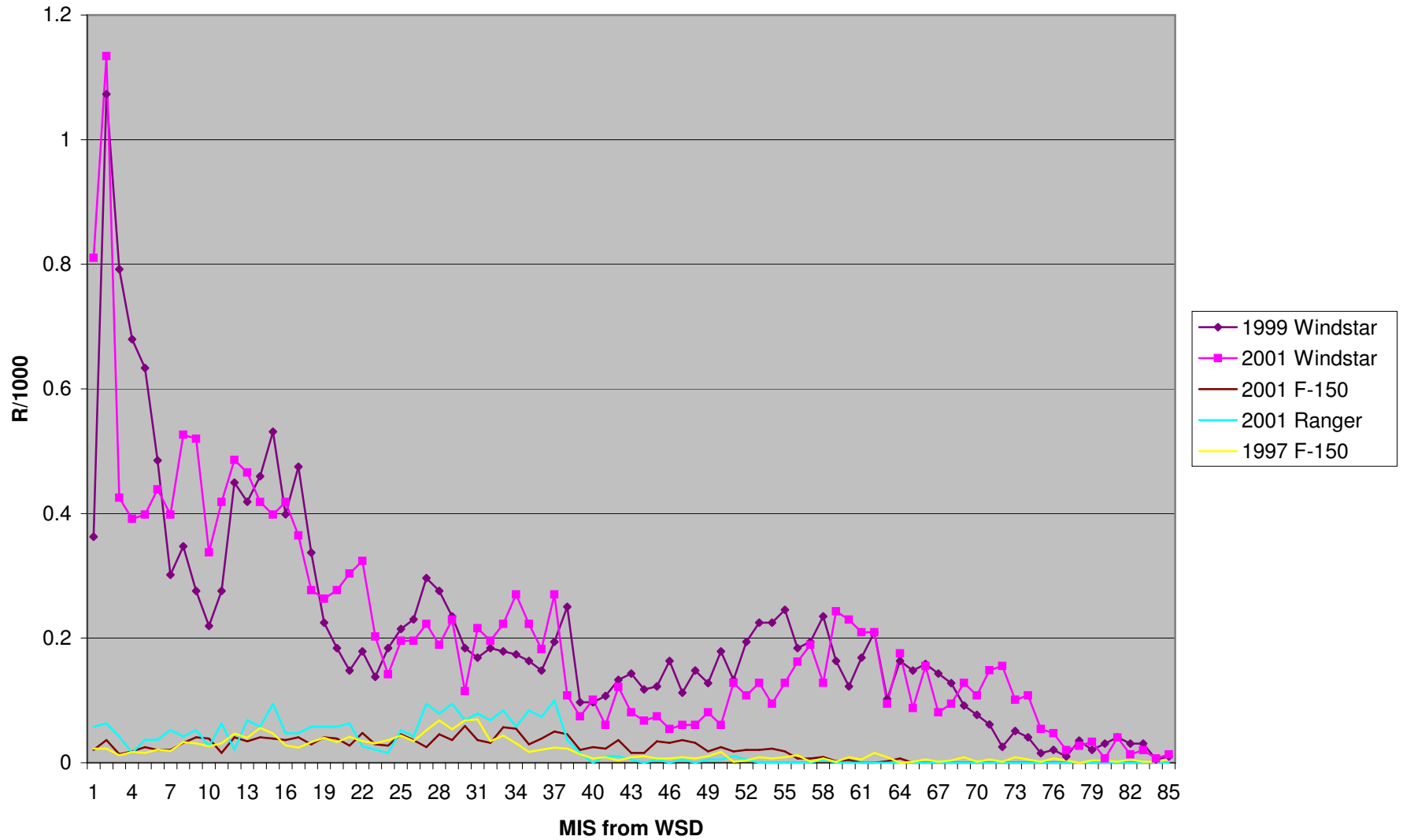
After-Market Sales (units)

Vehicle Option	MY	PL	Prefix	Base	Suffix		Source	1996	1997	1998	1999	2000	2001	2002	2003	2004	2005	2006	2007	2008
Windstar ABS	95-97	410P	F58Z	2C219	AA	Replaced by 4F2Z- 2C219-AARM	n/a	n/a	n/a	n/a	n/a	n/a	n/a	n/a	n/a	n/a	n/a	n/a	n/a	n/a
Windstar ABS	95-97	410P	4F2Z	2C219	AA	Does not exist	n/a	n/a	n/a	n/a	n/a	n/a	n/a	n/a	n/a	n/a	n/a	n/a	n/a	n/a
Windstar ABS	95-97	410P	4F2Z	2C219	AARM	Active	Visteon-KA	366	423	558	510	328	374	216	146	79	121	97	67	15
Windstar ABS	98	410P	F78Z	2B373	AA	Replaced by 4F2Z- 2C219-DARM	n/a	n/a	n/a	n/a	n/a	n/a	n/a	n/a	n/a	n/a	n/a	n/a	n/a	n/a
Windstar ABS	98	410P	4F2Z	2C219	DA	Does not exist	n/a	n/a	n/a	n/a	n/a	n/a	n/a	n/a	n/a	n/a	n/a	n/a	n/a	n/a
Windstar ABS	98	410P	4F2Z	2C219	DARM	Active	Visteon	0	47	110	91	77	102	80	111	158	283	239	200	61
Windstar ABS	99-00	430	XF2Z	2B373	AB	Replaced by XF2Z- 2C219-AB	n/a	n/a	n/a	n/a	n/a	n/a	n/a	n/a	n/a	n/a	n/a	n/a	n/a	n/a
Windstar ABS	99-00	430	XF2Z	2C219	AB	Active	Siemens	0	0	34	451	655	732	2028	5335	8217	7804	5844	4056	776
Windstar ABS	01-03	430	2F2Z	2B373	BA	Replaced by 2F2Z- 2C219-BA	n/a	n/a	n/a	n/a	n/a	n/a	n/a	n/a	n/a	n/a	n/a	n/a	n/a	n/a
Windstar ABS	01-03	430	2F2Z	2C219	BA	Active	Siemens	0	0	0	0	5	128	1251	1903	3886	8321	11374	12843	2168
Windstar TC	96-97	410PS21	F68Z	2C219	CC	Replaced by 4F2Z- 2C219-BARM	n/a	n/a	n/a	n/a	n/a	n/a	n/a	n/a	n/a	n/a	n/a	n/a	n/a	n/a
Windstar TC	96-97	410PS21	4F2Z	2C219	BA	Does not exist	n/a	n/a	n/a	n/a	n/a	n/a	n/a	n/a	n/a	n/a	n/a	n/a	n/a	n/a
Windstar TC	96-97	410PS21	4F2Z	2C219	BARM	Active	Visteon-KT	289	697	528	247	123	127	83	65	33	32	26	31	5
Windstar TC	98	410PS21	F78Z	2B373	BA	Replaced by 4F2Z- 2C219-CARM	n/a	n/a	n/a	n/a	n/a	n/a	n/a	n/a	n/a	n/a	n/a	n/a	n/a	n/a
Windstar TC	98	410PS21	4F2Z	2C219	CA	Does not exist	n/a	n/a	n/a	n/a	n/a	n/a	n/a	n/a	n/a	n/a	n/a	n/a	n/a	n/a
Windstar TC	98	410PS21	4F2Z	2C219	CARM	Active	Visteon	0	39	163	155	107	90	58	63	73	194	129	56	17
Windstar TC	99-00	430S21	XF2Z	2B373	BB	Replaced by XF2Z- 2C219-BA	n/a	n/a	n/a	n/a	n/a	n/a	n/a	n/a	n/a	n/a	n/a	n/a	n/a	n/a
Windstar TC	99-00	430S21	XF2Z	2C219	BA	Active	Siemens	0	0	8	184	224	244	332	628	910	943	947	659	207
Windstar TC	01-03	430S21	2F2Z	2B373	CA	Replaced by 2F2Z- 2C219-CA	n/a	n/a	n/a	n/a	n/a	n/a	n/a	n/a	n/a	n/a	n/a	n/a	n/a	n/a
Windstar TC	01-03	430S21	2F2Z	2C219	CA	Active	Siemens	0	0	0	0	4	70	528	585	710	1051	1778	2019	521
Windstar IVD	2003	430S21	3F2Z	2B373	AA	Replaced by 3F2Z-2C219-AB	n/a	n/a	n/a	n/a	n/a	n/a	n/a	n/a	n/a	n/a	n/a	n/a	n/a	n/a
Windstar IVD	2003	430S21	3F2Z	2C219	AB	Active 13509217	TRW Lancashire	0	0	0	0	0	0	47	250	166	237	372	178	34

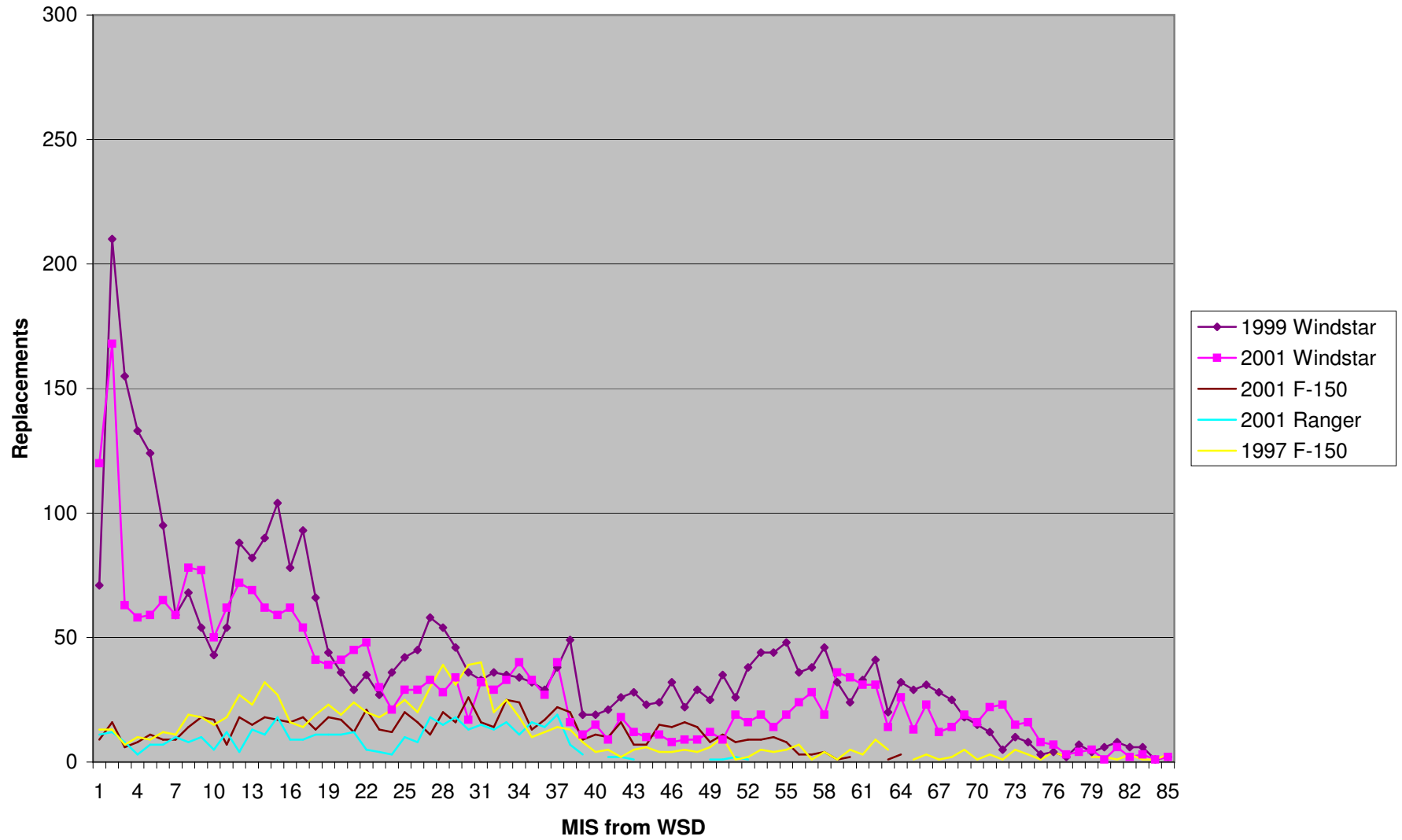
reman  
 new, but one time buy on chips

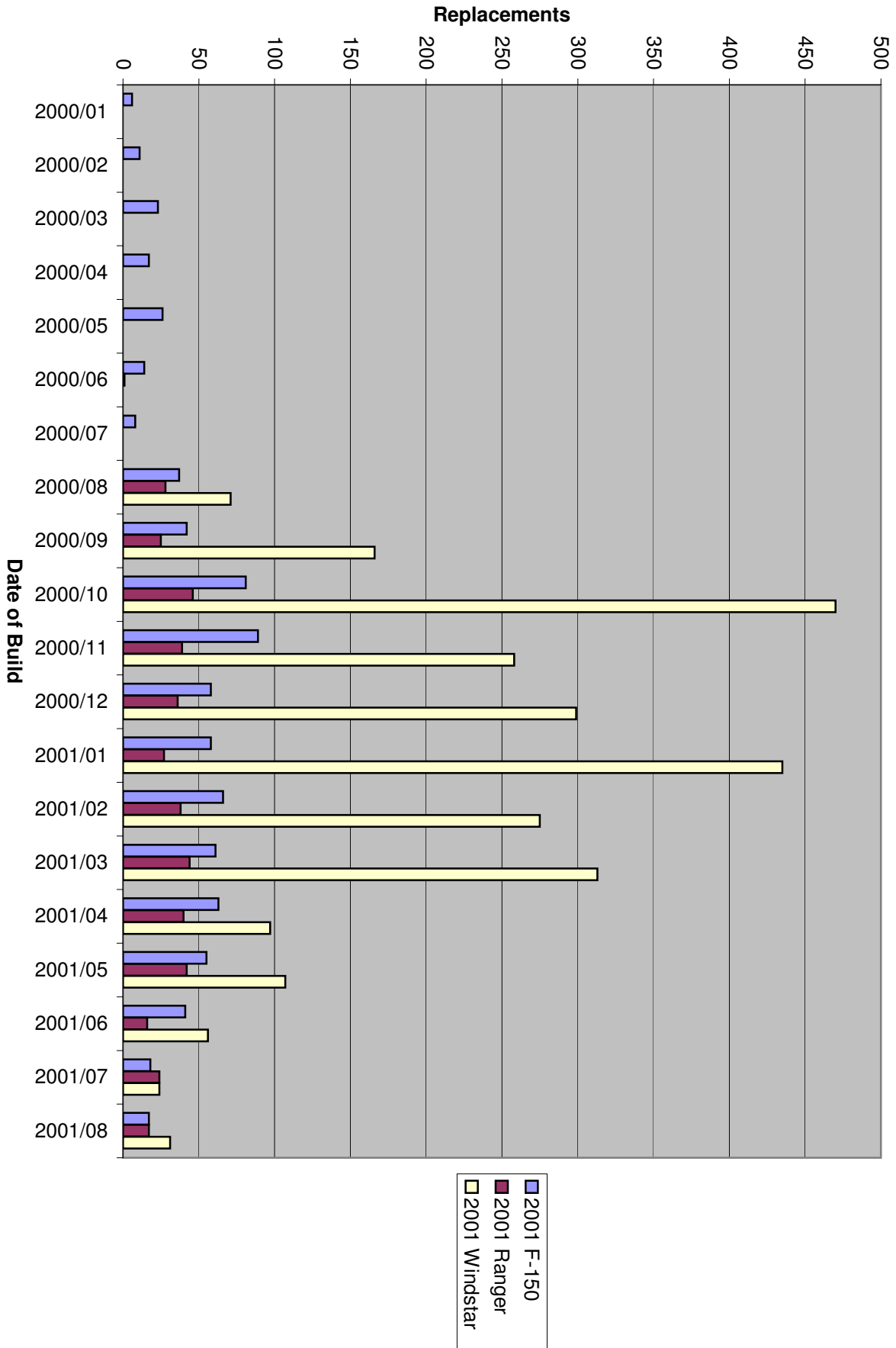


### 9F924 AWS Replacements



### 9F924 AWS Replacements





DRAFT

# Ford Windstar Warranty Analysis MY 1995 - 2003

Name: D. Whalen  
Date: 5/21/08



Data Source: Ford Motor Co. AWS  
Region: NA  
Country: USA, Canada

safety.



# Ford ECU Service Part Numbers

*Non-ABS  
very low  
take rate*  
*2B373 may be  
kit that  
includes axle*

Vehicle Option	MY	PL	Prefix	Base	Suffix
Windstar ABS	95-97	410P	F58Z	2C219	AA
Windstar ABS	95-97	410P	4F2Z	2C219	AA
Windstar ABS	95-97	410P	4F2Z	2C219	AARM
Windstar ABS	98	410P	F78Z	2B373	AA
Windstar ABS	98	410P	4F2Z	2C219	DA
Windstar ABS	98	410P	4F2Z	2C219	DARM
Windstar ABS	99-00	430	XF2Z	2B373	AB
Windstar ABS	99-00	430	XF2Z	2C219	AB
Windstar ABS	01-03	430	2F2Z	2B373	BA
Windstar ABS	01-03	430	2F2Z	2C219	BA
Windstar TC	96-97	410PS21	F68Z	2C219	CC
Windstar TC	96-97	410PS21	4F2Z	2C219	BA
Windstar TC	96-97	410PS21	4F2Z	2C219	BARM
Windstar TC	98	410PS21	F78Z	2B373	BA
Windstar TC	98	410PS21	4F2Z	2C219	CA
Windstar TC	98	410PS21	4F2Z	2C219	CARM
Windstar TC	99-00	430S21	XF2Z	2B373	BB
Windstar TC	99-00	430S21	XF2Z	2C219	BA
Windstar TC	01-03	430S21	2F2Z	2B373	CA
Windstar TC	01-03	430S21	2F2Z	2C219	CA
Windstar IVD	2003	430S21	3F2Z	2B373	AA
Windstar IVD	2003	430S21	3F2Z	2C219	AB



# Ford Actuation Service Part Numbers

Vehicle Option	MY	PL	Prefix	Base	Suffix
Windstar Booster					
Windstar MC					
Windstar MC Assy					

**Target completion 5/22/08**

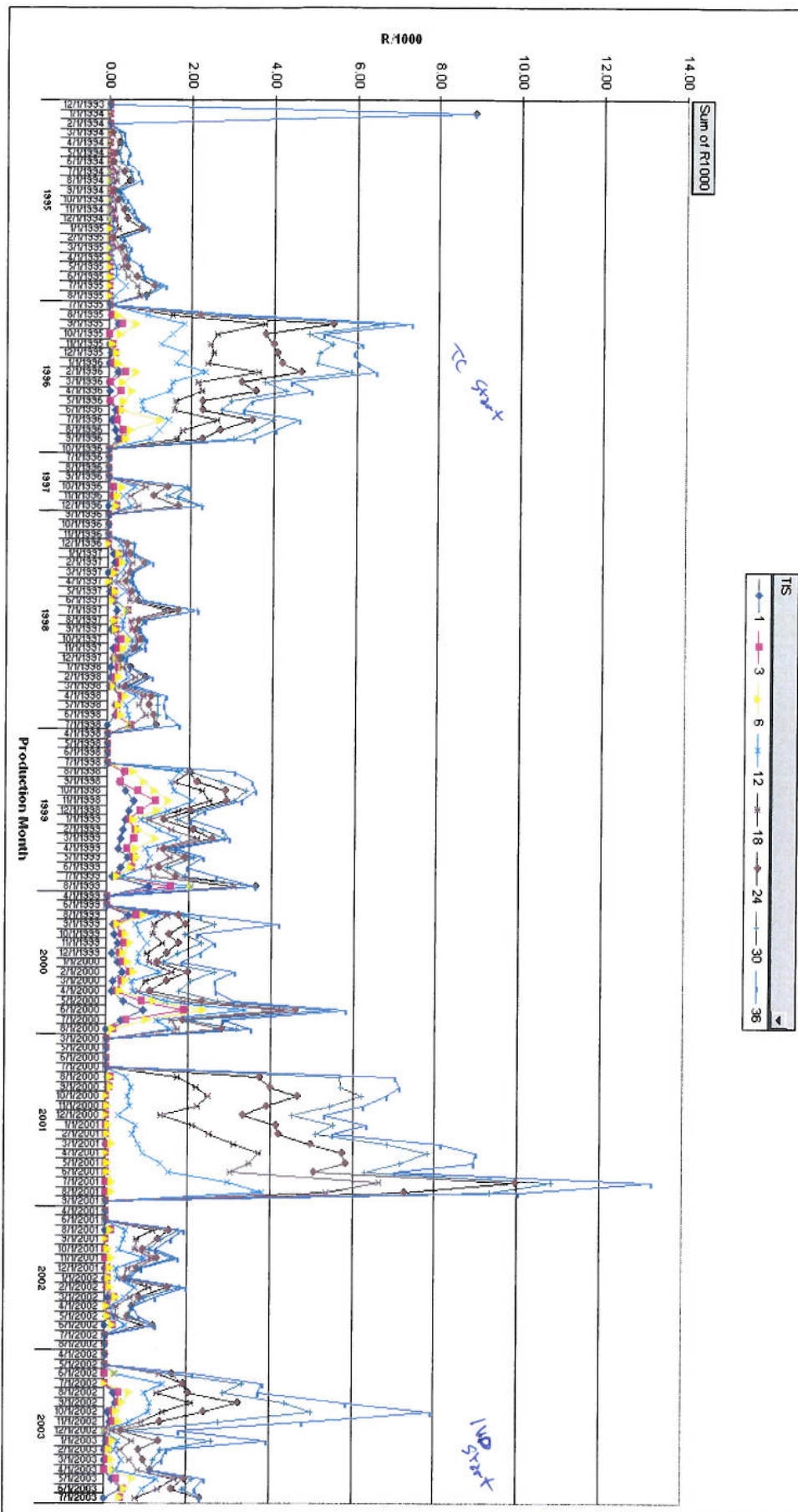


# MOP MIS Trend Chart

Vehicle Line [VLJ2] TAA3 - WINDSTAR (VANB8VAN126) [95-03] Option Code2 [Weighted Average] Part [ECU (2B373 or 2C219)]

Windstar ECU (2B373 or 2C219) Trend Chart

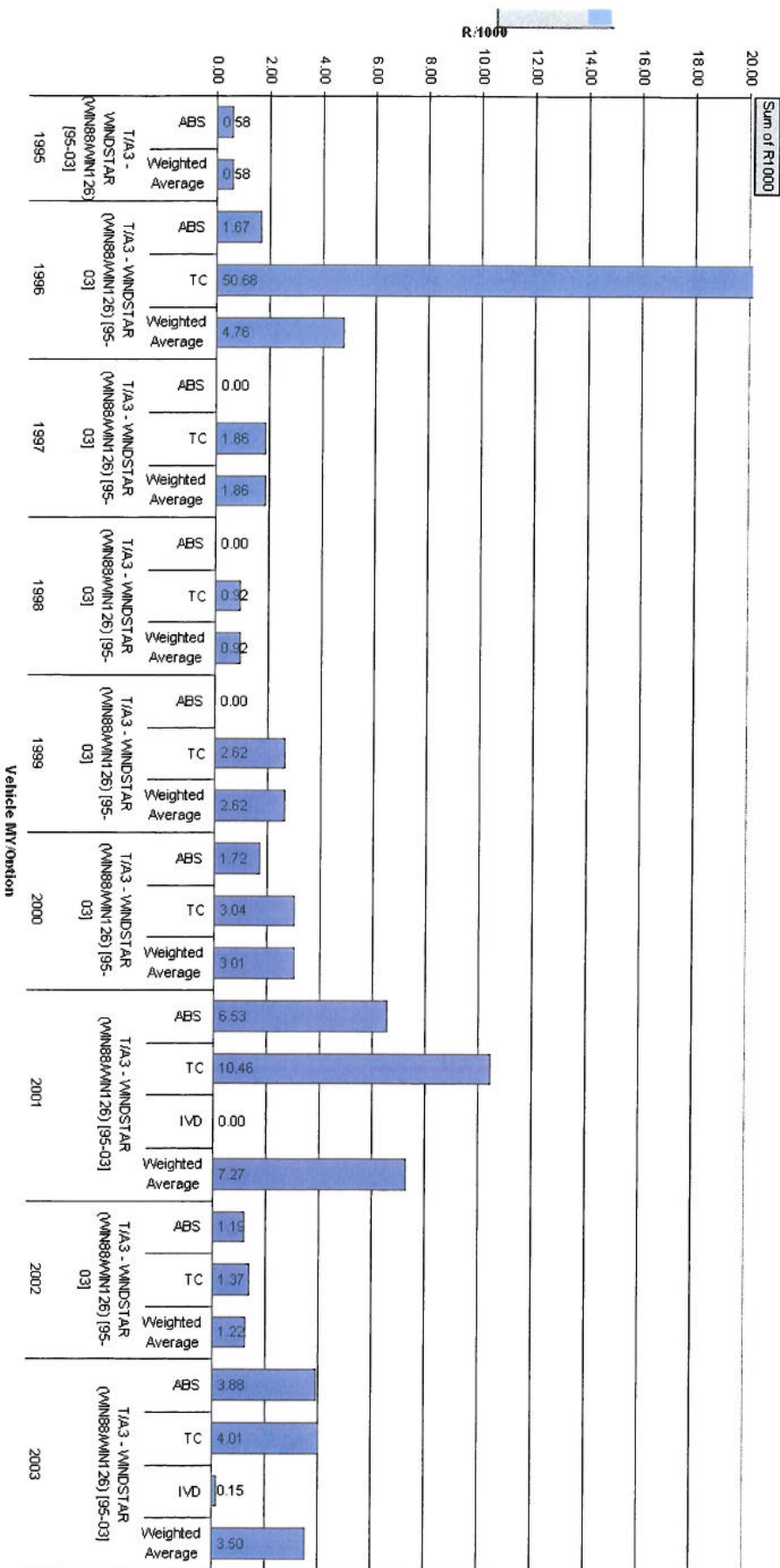
WEIGHTED VEHICLE ECU WARRANTY  
PRODUCT INDEPENDANT



# 36MIS Comparison by Product

Windstar ECU (2B373 or 2C219) Comparison @ 36 MIS

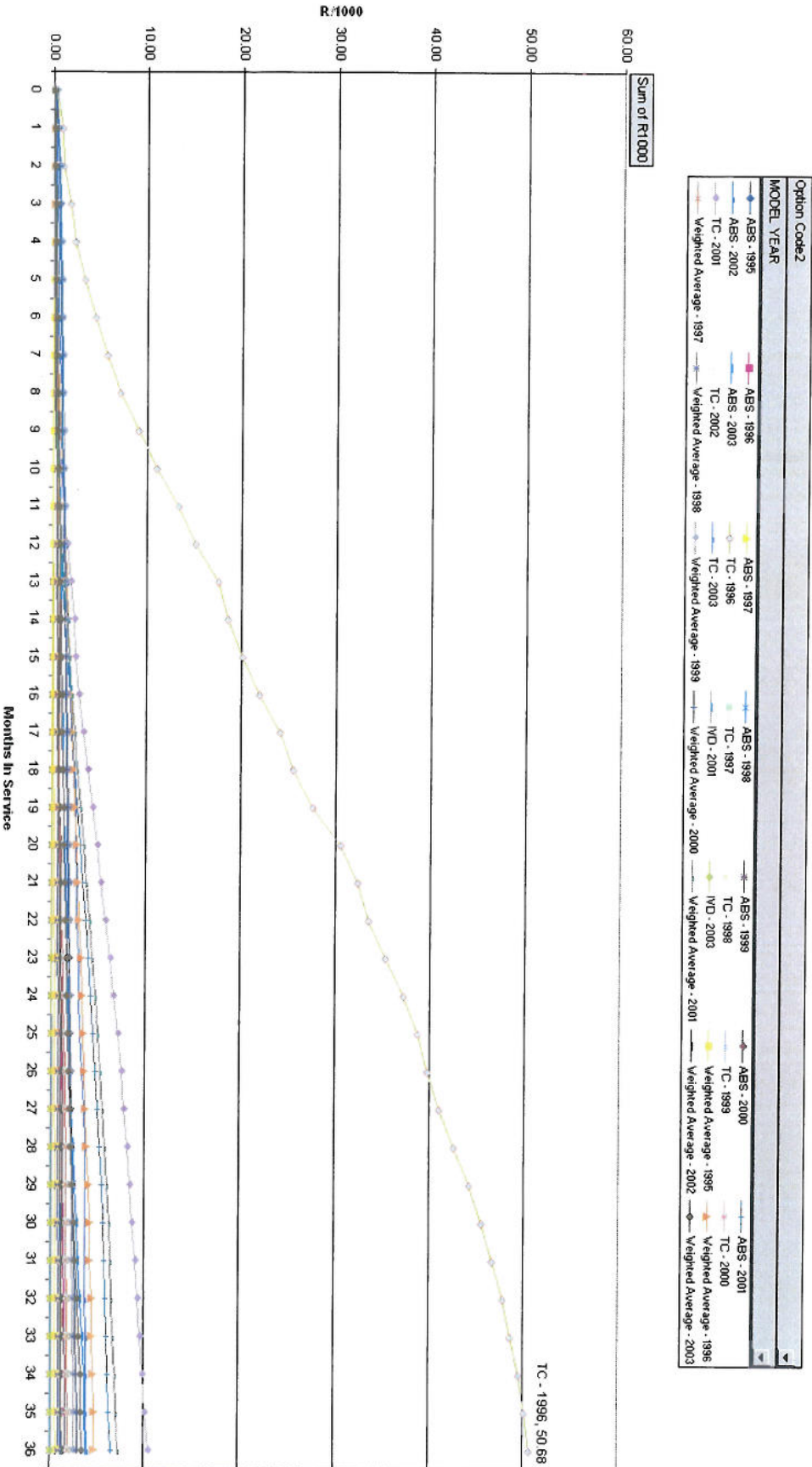
Part  
ECU (2B373 or 2C219)



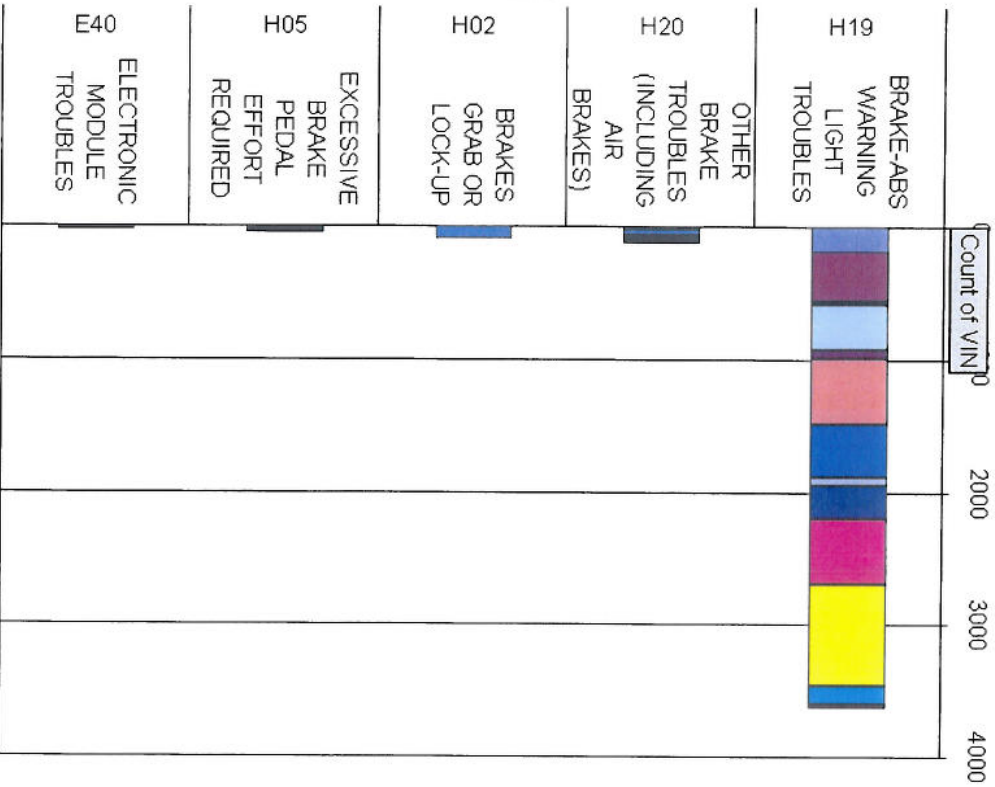


# Windstar ECU 36 Month Growth Chart

Windstar ECU (2B373 or 2C219) Growth Chart

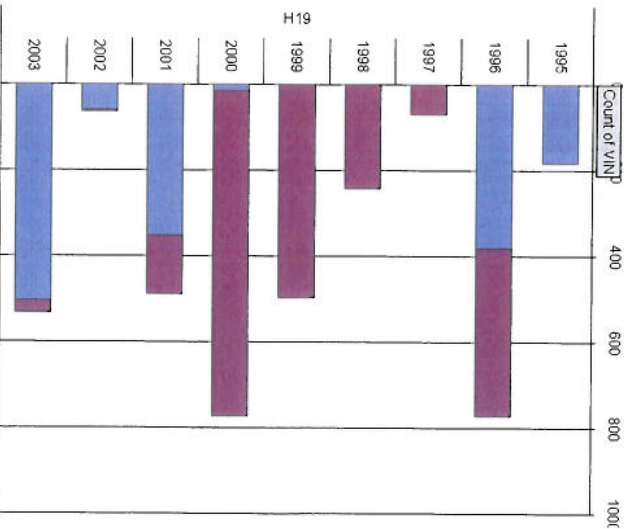


# Return Fault Summary



*Just claims*

Vehicle Line WERS [VL] Desc
Option Code2
Model Year
WINDSTAR (WIN88/MIN126) [95-03] - ABS - 1995
WINDSTAR (WIN88/MIN126) [95-03] - ABS - 1996
WINDSTAR (WIN88/MIN126) [95-03] - ABS - 1997
WINDSTAR (WIN88/MIN126) [95-03] - ABS - 1998
WINDSTAR (WIN88/MIN126) [95-03] - ABS - 1999
WINDSTAR (WIN88/MIN126) [95-03] - ABS - 2000
WINDSTAR (WIN88/MIN126) [95-03] - ABS - 2001
WINDSTAR (WIN88/MIN126) [95-03] - ABS - 2002
WINDSTAR (WIN88/MIN126) [95-03] - ABS - 2003



Vehicle Line WERS [VL] Desc
Customer Concern Code Desc
Option Code2
WINDSTAR (WIN88/MIN126) [95-03] - BRAKE-ABS WARNING LIGHT TROUBLES - ABS
WINDSTAR (WIN88/MIN126) [95-03] - BRAKE-ABS WARNING LIGHT TROUBLES - TC
WINDSTAR (WIN88/MIN126) [95-03] - BRAKE-ABS WARNING LIGHT TROUBLES - IVD



---

**From:** Tuneff, Mark (M.S.)  
**Sent:** Monday, May 19, 2008 9:16 AM  
**To:** Kwiatkowski, Mike (M.P.)  
**Subject:** Wind Retail Base Part Counts Rev.xls

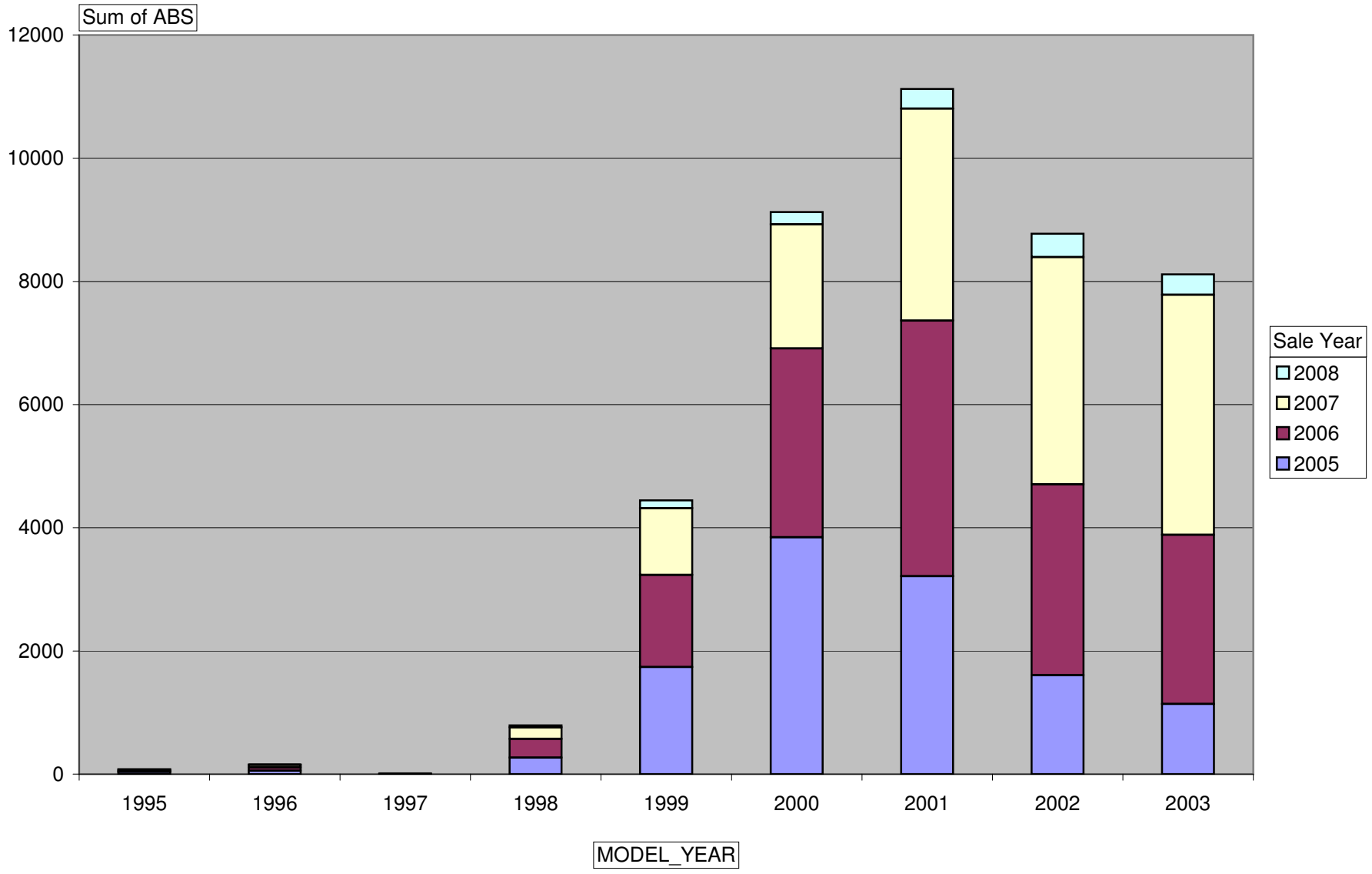
**Attachments:** Wind Retail Base Part Counts Rev.xls

Mike,

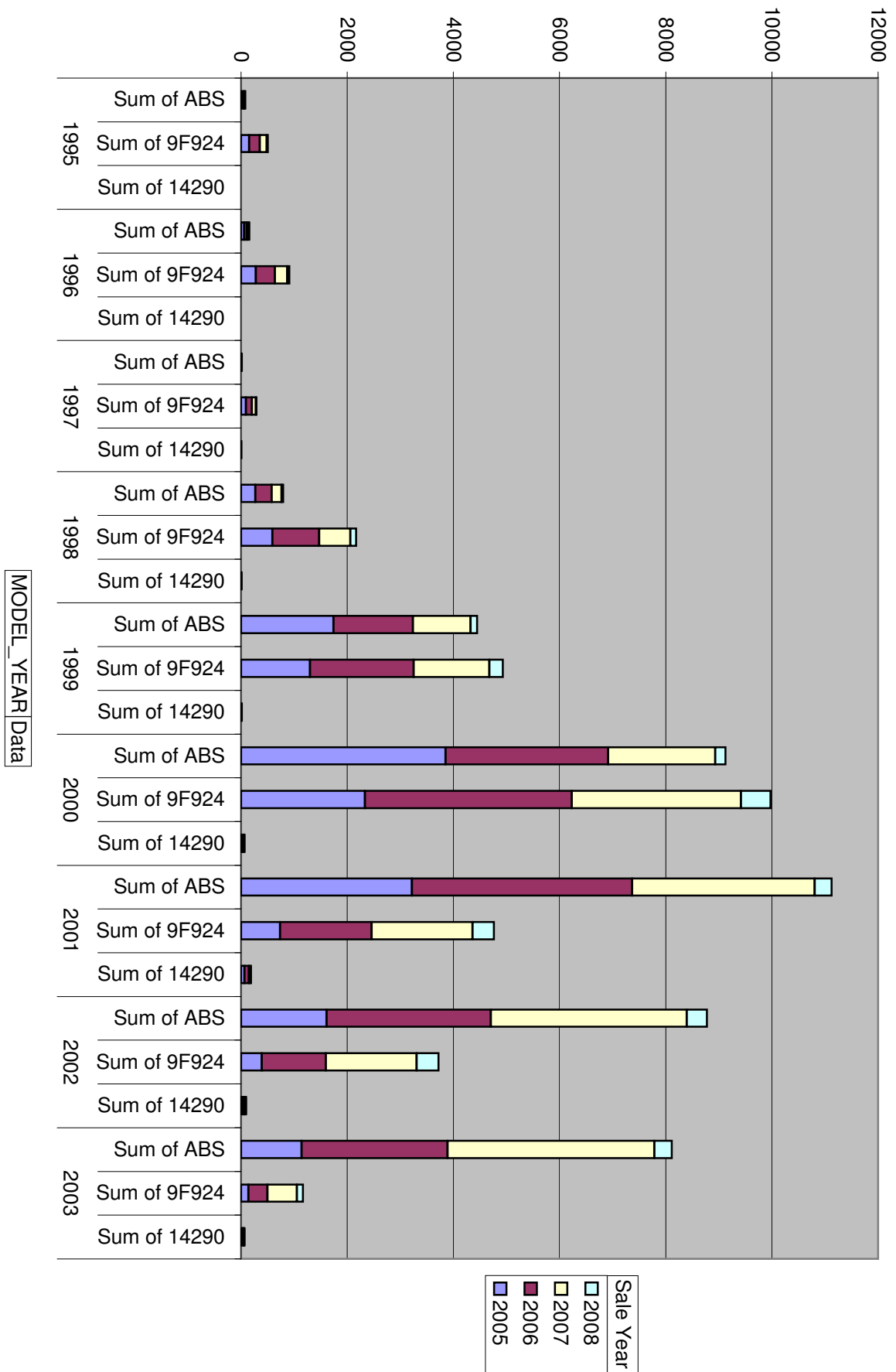
There are several tables in here that help make up the pivot charts and I don't know how to clean this up much more. But if they focus on the charts named "ABS Parts by MY" and "All Parts by MY" it should help. For reference "ABS Parts" means either a -2B373- or a -2C219- was listed. If they have any questions I'm available for some explanation.



Wind Retail  
se Part Counts F



Sum of ABS	Sale Year				
MODEL_YEAR	2005	2006	2007	2008	Grand Total
1995	35	25	18	2	80
1996	55	54	40	7	156
1997	3	5	4	1	13
1998	266	305	188	34	793
1999	1737	1496	1085	126	4444
2000	3847	3063	2018	197	9125
2001	3214	4151	3438	320	11123
2002	1608	3096	3690	382	8776
2003	1138	2747	3897	332	8114
Grand Total	11903	14942	14378	1401	42624



MODEL Y	Data	Sale Year				Grand Total
		2005	2006	2007	2008	
1995	Sum of ABS	35	25	18	2	80
	Sum of 9F924	148	203	127	25	503
	Sum of 14290	0	0	1	0	1
1996	Sum of ABS	55	54	40	7	156
	Sum of 9F924	276	359	232	41	908
	Sum of 14290	1	1	0	0	2
1997	Sum of ABS	3	5	4	1	13
	Sum of 9F924	87	112	78	12	289
	Sum of 14290	3	0	1	0	4
1998	Sum of ABS	266	305	188	34	793
	Sum of 9F924	589	878	589	113	2169
	Sum of 14290	6	1	2	1	10
1999	Sum of ABS	1737	1496	1085	126	4444
	Sum of 9F924	1295	1955	1423	258	4931
	Sum of 14290	7	7	0	0	14
2000	Sum of ABS	3847	3063	2018	197	9125
	Sum of 9F924	2330	3895	3190	558	9973
	Sum of 14290	36	23	6	0	65
2001	Sum of ABS	3214	4151	3438	320	11123
	Sum of 9F924	733	1724	1901	403	4761
	Sum of 14290	62	84	37	3	186
2002	Sum of ABS	1608	3096	3690	382	8776
	Sum of 9F924	389	1205	1711	414	3719
	Sum of 14290	21	35	30	6	92
2003	Sum of ABS	1138	2747	3897	332	8114
	Sum of 9F924	136	357	557	115	1165
	Sum of 14290	27	19	16	3	65
Total Sum of ABS		11903	14942	14378	1401	42624
Total Sum of 9F924		5983	10688	9808	1939	28418
Total Sum of 14290		163	170	93	13	439

MODEL_Y	yearmonth	Sale Year	Sale Month	2B373	2C219	ABS	9F924	14290
1995	200504	2005	04	0	2	2	3	0
1995	200505	2005	05	0	2	2	2	0
1995	200506	2005	06	0	5	5	11	0
1995	200507	2005	07	0	6	6	17	0
1995	200508	2005	08	2	6	8	21	0
1995	200509	2005	09	0	3	3	23	0
1995	200510	2005	10	2	2	4	34	0
1995	200511	2005	11	2	3	5	19	0
1995	200512	2005	12	0	0	0	18	0
1995	200601	2006	01	0	0	0	19	0
1995	200602	2006	02	2	4	6	13	0
1995	200603	2006	03	0	0	0	19	0
1995	200604	2006	04	1	2	3	13	0
1995	200605	2006	05	3	3	6	18	0
1995	200606	2006	06	0	0	0	11	0
1995	200607	2006	07	0	1	1	21	0
1995	200608	2006	08	1	4	5	23	0
1995	200609	2006	09	0	0	0	19	0
1995	200610	2006	10	2	0	2	16	0
1995	200611	2006	11	0	0	0	16	0
1995	200612	2006	12	1	1	2	15	0
1995	200701	2007	01	3	1	4	10	0
1995	200702	2007	02	0	0	0	13	0
1995	200703	2007	03	1	1	2	10	0
1995	200704	2007	04	4	4	8	11	0
1995	200705	2007	05	0	0	0	12	0
1995	200706	2007	06	0	1	1	9	0
1995	200707	2007	07	0	0	0	8	1
1995	200708	2007	08	1	0	1	9	0
1995	200709	2007	09	0	0	0	18	0
1995	200710	2007	10	1	0	1	11	0
1995	200711	2007	11	0	1	1	8	0
1995	200712	2007	12	0	0	0	8	0
1995	200801	2008	01	0	1	1	10	0
1995	200802	2008	02	0	0	0	2	0
1995	200803	2008	03	0	0	0	9	0
1995	200804	2008	04	0	1	1	4	0
1996	200504	2005	04	0	8	8	8	0
1996	200505	2005	05	0	2	2	6	0
1996	200506	2005	06	0	4	4	17	0
1996	200507	2005	07	2	9	11	29	0
1996	200508	2005	08	1	7	8	65	0
1996	200509	2005	09	2	5	7	29	0
1996	200510	2005	10	1	8	9	48	0
1996	200511	2005	11	1	1	2	44	1
1996	200512	2005	12	2	2	4	30	0
1996	200601	2006	01	1	3	4	30	0
1996	200602	2006	02	3	4	7	27	0
1996	200603	2006	03	3	6	9	33	0
1996	200604	2006	04	0	2	2	33	0
1996	200605	2006	05	4	1	5	38	0



1996	200606	2006	06	1	1	2	32	0
1996	200607	2006	07	2	3	5	29	0
1996	200608	2006	08	4	5	9	34	0
1996	200609	2006	09	1	5	6	29	1
1996	200610	2006	10	1	2	3	29	0
1996	200611	2006	11	0	1	1	22	0
1996	200612	2006	12	0	1	1	23	0
1996	200701	2007	01	0	0	0	30	0
1996	200702	2007	02	4	5	9	21	0
1996	200703	2007	03	1	2	3	17	0
1996	200704	2007	04	1	2	3	14	0
1996	200705	2007	05	1	2	3	20	0
1996	200706	2007	06	2	1	3	18	0
1996	200707	2007	07	3	6	9	21	0
1996	200708	2007	08	1	3	4	18	0
1996	200709	2007	09	0	0	0	13	0
1996	200710	2007	10	0	1	1	25	0
1996	200711	2007	11	1	4	5	15	0
1996	200712	2007	12	0	0	0	20	0
1996	200801	2008	01	0	2	2	17	0
1996	200802	2008	02	1	3	4	11	0
1996	200803	2008	03	0	1	1	7	0
1996	200804	2008	04	0	0	0	6	0
1997	200504	2005	04	0	0	0	1	0
1997	200505	2005	05	0	1	1	1	0
1997	200506	2005	06	0	0	0	7	0
1997	200507	2005	07	0	1	1	19	1
1997	200508	2005	08	0	1	1	13	0
1997	200509	2005	09	0	0	0	12	0
1997	200510	2005	10	0	0	0	8	1
1997	200511	2005	11	0	0	0	16	1
1997	200512	2005	12	0	0	0	10	0
1997	200601	2006	01	0	0	0	7	0
1997	200602	2006	02	0	2	2	11	0
1997	200603	2006	03	0	0	0	6	0
1997	200604	2006	04	0	1	1	8	0
1997	200605	2006	05	0	0	0	5	0
1997	200606	2006	06	1	0	1	8	0
1997	200607	2006	07	0	0	0	14	0
1997	200608	2006	08	0	0	0	13	0
1997	200609	2006	09	0	0	0	13	0
1997	200610	2006	10	0	0	0	11	0
1997	200611	2006	11	0	0	0	8	0
1997	200612	2006	12	0	1	1	8	0
1997	200701	2007	01	0	0	0	4	0
1997	200702	2007	02	0	1	1	8	0
1997	200703	2007	03	0	0	0	4	0
1997	200704	2007	04	0	0	0	9	0
1997	200705	2007	05	0	0	0	10	0
1997	200706	2007	06	0	0	0	8	0
1997	200707	2007	07	0	0	0	5	0
1997	200708	2007	08	0	0	0	11	1

1997	200709	2007	09	0	0	0	3	0
1997	200710	2007	10	0	1	1	8	0
1997	200711	2007	11	0	0	0	3	0
1997	200712	2007	12	1	1	2	5	0
1997	200801	2008	01	0	0	0	3	0
1997	200802	2008	02	0	0	0	4	0
1997	200803	2008	03	0	1	1	2	0
1997	200804	2008	04	0	0	0	3	0
1998	200504	2005	04	24	1	25	5	1
1998	200505	2005	05	26	10	36	9	1
1998	200506	2005	06	24	4	28	35	0
1998	200507	2005	07	25	7	32	72	1
1998	200508	2005	08	24	4	28	113	0
1998	200509	2005	09	20	3	23	100	2
1998	200510	2005	10	16	5	21	95	0
1998	200511	2005	11	24	8	32	83	0
1998	200512	2005	12	32	9	41	77	1
1998	200601	2006	01	28	7	35	55	0
1998	200602	2006	02	20	6	26	79	0
1998	200603	2006	03	16	13	29	70	0
1998	200604	2006	04	14	11	25	67	0
1998	200605	2006	05	23	22	45	71	0
1998	200606	2006	06	14	11	25	81	0
1998	200607	2006	07	18	16	34	86	0
1998	200608	2006	08	10	16	26	98	0
1998	200609	2006	09	5	6	11	82	0
1998	200610	2006	10	10	11	21	59	1
1998	200611	2006	11	2	7	9	71	0
1998	200612	2006	12	8	11	19	59	0
1998	200701	2007	01	8	7	15	41	0
1998	200702	2007	02	6	6	12	37	0
1998	200703	2007	03	4	13	17	53	2
1998	200704	2007	04	9	5	14	56	0
1998	200705	2007	05	9	12	21	58	0
1998	200706	2007	06	8	8	16	51	0
1998	200707	2007	07	6	11	17	61	0
1998	200708	2007	08	9	8	17	50	0
1998	200709	2007	09	6	6	12	49	0
1998	200710	2007	10	12	9	21	54	0
1998	200711	2007	11	13	8	21	45	0
1998	200712	2007	12	2	3	5	34	0
1998	200801	2008	01	8	9	17	34	0
1998	200802	2008	02	4	5	9	26	0
1998	200803	2008	03	2	3	5	34	1
1998	200804	2008	04	2	1	3	19	0
1999	200504	2005	04	110	0	110	13	2
1999	200505	2005	05	160	0	160	40	0
1999	200506	2005	06	260	1	261	94	2
1999	200507	2005	07	289	0	289	173	0
1999	200508	2005	08	315	1	316	248	2
1999	200509	2005	09	207	0	207	193	0
1999	200510	2005	10	195	0	195	195	1

1999	200511	2005	11	128	0	128	202	0
1999	200512	2005	12	71	0	71	137	0
1999	200601	2006	01	76	0	76	98	1
1999	200602	2006	02	68	0	68	127	1
1999	200603	2006	03	62	8	70	140	0
1999	200604	2006	04	23	65	88	143	1
1999	200605	2006	05	34	100	134	194	1
1999	200606	2006	06	67	121	188	218	0
1999	200607	2006	07	95	114	209	247	3
1999	200608	2006	08	83	102	185	236	0
1999	200609	2006	09	41	121	162	162	0
1999	200610	2006	10	40	110	150	161	0
1999	200611	2006	11	24	60	84	127	0
1999	200612	2006	12	14	68	82	102	0
1999	200701	2007	01	13	58	71	86	0
1999	200702	2007	02	10	45	55	99	0
1999	200703	2007	03	11	45	56	106	0
1999	200704	2007	04	7	42	49	97	0
1999	200705	2007	05	22	85	107	122	0
1999	200706	2007	06	20	94	114	159	0
1999	200707	2007	07	34	114	148	154	0
1999	200708	2007	08	27	116	143	172	0
1999	200709	2007	09	18	92	110	132	0
1999	200710	2007	10	30	101	131	141	0
1999	200711	2007	11	16	61	77	94	0
1999	200712	2007	12	2	22	24	61	0
1999	200801	2008	01	5	24	29	71	0
1999	200802	2008	02	7	34	41	76	0
1999	200803	2008	03	6	29	35	78	0
1999	200804	2008	04	6	15	21	33	0
2000	200504	2005	04	246	0	246	29	4
2000	200505	2005	05	372	0	372	47	5
2000	200506	2005	06	606	1	607	144	7
2000	200507	2005	07	628	0	628	284	2
2000	200508	2005	08	659	2	661	403	6
2000	200509	2005	09	494	0	494	376	5
2000	200510	2005	10	410	0	410	416	5
2000	200511	2005	11	259	0	259	347	2
2000	200512	2005	12	170	0	170	284	0
2000	200601	2006	01	156	0	156	259	5
2000	200602	2006	02	129	0	129	232	3
2000	200603	2006	03	116	11	127	304	0
2000	200604	2006	04	43	147	190	281	0
2000	200605	2006	05	62	236	298	361	1
2000	200606	2006	06	126	325	451	406	3
2000	200607	2006	07	171	312	483	418	2
2000	200608	2006	08	156	301	457	434	3
2000	200609	2006	09	69	219	288	332	1
2000	200610	2006	10	34	183	217	337	3
2000	200611	2006	11	22	132	154	299	1
2000	200612	2006	12	20	93	113	232	1
2000	200701	2007	01	18	91	109	235	2

2000	200702	2007	02	9	62	71	189	1
2000	200703	2007	03	17	92	109	277	0
2000	200704	2007	04	25	101	126	257	0
2000	200705	2007	05	21	147	168	294	1
2000	200706	2007	06	42	233	275	331	0
2000	200707	2007	07	36	238	274	329	0
2000	200708	2007	08	34	238	272	356	2
2000	200709	2007	09	30	198	228	273	0
2000	200710	2007	10	19	168	187	285	0
2000	200711	2007	11	26	108	134	232	0
2000	200712	2007	12	9	56	65	132	0
2000	200801	2008	01	6	43	49	149	0
2000	200802	2008	02	7	49	56	152	0
2000	200803	2008	03	5	57	62	165	0
2000	200804	2008	04	3	27	30	92	0
2001	200504	2005	04	148	0	148	9	7
2001	200505	2005	05	229	0	229	24	2
2001	200506	2005	06	488	1	489	34	7
2001	200507	2005	07	540	0	540	88	13
2001	200508	2005	08	549	0	549	126	8
2001	200509	2005	09	509	0	509	109	7
2001	200510	2005	10	388	0	388	120	9
2001	200511	2005	11	221	0	221	131	6
2001	200512	2005	12	141	0	141	92	3
2001	200601	2006	01	131	0	131	110	4
2001	200602	2006	02	110	1	111	112	4
2001	200603	2006	03	122	5	127	125	6
2001	200604	2006	04	136	77	213	113	12
2001	200605	2006	05	160	171	331	126	8
2001	200606	2006	06	304	302	606	169	8
2001	200607	2006	07	300	380	680	164	9
2001	200608	2006	08	240	475	715	189	9
2001	200609	2006	09	99	397	496	157	12
2001	200610	2006	10	63	293	356	169	5
2001	200611	2006	11	43	183	226	151	2
2001	200612	2006	12	27	132	159	139	5
2001	200701	2007	01	18	109	127	103	2
2001	200702	2007	02	23	87	110	109	3
2001	200703	2007	03	17	126	143	141	6
2001	200704	2007	04	35	158	193	148	2
2001	200705	2007	05	53	281	334	164	4
2001	200706	2007	06	55	418	473	187	5
2001	200707	2007	07	73	501	574	203	2
2001	200708	2007	08	73	460	533	226	3
2001	200709	2007	09	44	303	347	177	5
2001	200710	2007	10	39	285	324	200	2
2001	200711	2007	11	25	143	168	138	1
2001	200712	2007	12	20	92	112	105	2
2001	200801	2008	01	10	67	77	105	1
2001	200802	2008	02	11	72	83	117	0
2001	200803	2008	03	18	88	106	114	2
2001	200804	2008	04	8	46	54	67	0

2002	200504	2005	04	104	1	105	9	4
2002	200505	2005	05	108	0	108	12	3
2002	200506	2005	06	260	0	260	14	2
2002	200507	2005	07	250	0	250	43	2
2002	200508	2005	08	272	0	272	64	0
2002	200509	2005	09	252	0	252	67	2
2002	200510	2005	10	179	0	179	59	2
2002	200511	2005	11	114	0	114	65	1
2002	200512	2005	12	68	0	68	56	5
2002	200601	2006	01	53	0	53	59	3
2002	200602	2006	02	66	0	66	64	1
2002	200603	2006	03	87	4	91	69	1
2002	200604	2006	04	100	50	150	75	4
2002	200605	2006	05	99	149	248	86	5
2002	200606	2006	06	216	247	463	115	5
2002	200607	2006	07	242	332	574	117	1
2002	200608	2006	08	171	420	591	137	4
2002	200609	2006	09	67	272	339	132	3
2002	200610	2006	10	42	198	240	137	1
2002	200611	2006	11	24	157	181	122	3
2002	200612	2006	12	17	83	100	92	4
2002	200701	2007	01	19	113	132	102	3
2002	200702	2007	02	14	57	71	87	1
2002	200703	2007	03	26	111	137	109	4
2002	200704	2007	04	19	130	149	105	1
2002	200705	2007	05	45	270	315	154	2
2002	200706	2007	06	79	425	504	160	4
2002	200707	2007	07	80	512	592	185	3
2002	200708	2007	08	101	608	709	204	2
2002	200709	2007	09	67	350	417	160	4
2002	200710	2007	10	59	332	391	170	3
2002	200711	2007	11	33	129	162	166	2
2002	200712	2007	12	18	93	111	109	1
2002	200801	2008	01	12	72	84	99	2
2002	200802	2008	02	15	92	107	137	1
2002	200803	2008	03	21	88	109	111	3
2002	200804	2008	04	15	67	82	67	0
2003	200504	2005	04	65	1	66	4	3
2003	200505	2005	05	78	0	78	8	3
2003	200506	2005	06	157	0	157	19	3
2003	200507	2005	07	153	0	153	20	7
2003	200508	2005	08	197	0	197	26	3
2003	200509	2005	09	210	0	210	13	3
2003	200510	2005	10	132	0	132	17	1
2003	200511	2005	11	98	0	98	18	3
2003	200512	2005	12	47	0	47	11	1
2003	200601	2006	01	67	0	67	17	3
2003	200602	2006	02	66	0	66	25	1
2003	200603	2006	03	85	4	89	22	1
2003	200604	2006	04	62	88	150	18	3
2003	200605	2006	05	74	170	244	31	0
2003	200606	2006	06	155	241	396	31	2

2003	200607	2006	07	179	231	410	34	2
2003	200608	2006	08	142	362	504	46	2
2003	200609	2006	09	67	248	315	34	2
2003	200610	2006	10	42	196	238	43	0
2003	200611	2006	11	21	149	170	27	1
2003	200612	2006	12	14	84	98	29	2
2003	200701	2007	01	16	69	85	29	1
2003	200702	2007	02	5	65	70	20	0
2003	200703	2007	03	15	127	142	31	2
2003	200704	2007	04	22	149	171	34	1
2003	200705	2007	05	46	377	423	51	1
2003	200706	2007	06	64	541	605	56	4
2003	200707	2007	07	78	543	621	63	0
2003	200708	2007	08	79	566	645	63	2
2003	200709	2007	09	47	381	428	51	1
2003	200710	2007	10	51	345	396	50	3
2003	200711	2007	11	23	186	209	71	0
2003	200712	2007	12	10	92	102	38	1
2003	200801	2008	01	9	71	80	30	1
2003	200802	2008	02	10	68	78	36	0
2003	200803	2008	03	15	96	111	34	2
2003	200804	2008	04	10	53	63	15	0

MODEL YEAR	BASE PART	200504	200505	200506	200507	200508	200509	200510	200511	200512	200601	200602	200603	200604	200605	200606	200607	200608	200609	200610	200611	200612	200701	200702	200703
1995	2B373	0	0	0	0	2	0	2	2	0	0	2	0	1	3	0	0	1	0	2	0	1	3	0	1
1995	2C219	2	2	5	6	6	3	2	3	0	0	4	0	2	3	0	1	4	0	0	0	1	1	0	1
1995	9F924	3	2	11	17	21	23	34	19	18	19	13	19	13	18	11	21	23	19	16	16	15	10	13	10
1995	14290	0	0	0	0	0	0	0	0	0	0	0	0	0	0	0	0	0	0	0	0	0	0	0	0
1996	2B373	0	0	0	2	1	2	1	1	2	1	3	3	0	4	1	2	4	1	1	0	0	0	4	1
1996	2C219	8	2	4	9	7	5	8	1	2	3	4	6	2	1	1	3	5	5	2	1	1	0	5	2
1996	9F924	8	6	17	29	65	29	48	44	30	30	27	33	33	38	32	29	34	29	29	22	23	30	21	17
1996	14290	0	0	0	0	0	0	0	1	0	0	0	0	0	0	0	0	0	1	0	0	0	0	0	0
1997	2B373	0	0	0	0	0	0	0	0	0	0	0	0	0	0	1	0	0	0	0	0	0	0	0	0
1997	2C219	0	1	0	1	1	0	0	0	0	0	2	0	1	0	0	0	0	0	0	0	1	0	1	0
1997	9F924	1	1	7	19	13	12	8	16	10	7	11	6	8	5	8	14	13	13	11	8	8	4	8	4
1997	14290	0	0	0	1	0	0	1	1	0	0	0	0	0	0	0	0	0	0	0	0	0	0	0	0
1998	2B373	24	26	24	25	24	20	16	24	32	28	20	16	14	23	14	18	10	5	10	2	8	8	6	4
1998	2C219	1	10	4	7	4	3	5	8	9	7	6	13	11	22	11	16	16	6	11	7	11	7	6	13
1998	9F924	5	9	35	72	113	100	95	83	77	55	79	70	67	71	81	86	98	82	59	71	59	41	37	53
1998	14290	1	1	0	1	0	2	0	0	1	0	0	0	0	0	0	0	0	0	1	0	0	0	0	2
1999	2B373	110	160	260	289	315	207	195	128	71	76	68	62	23	34	67	95	83	41	40	24	14	13	10	11
1999	2C219	0	0	1	0	1	0	0	0	0	0	0	8	65	100	121	114	102	121	110	60	68	58	45	45
1999	9F924	13	40	94	173	248	193	195	202	137	98	127	140	143	194	218	247	236	162	161	127	102	86	99	106
1999	14290	2	0	2	0	2	0	1	0	0	1	1	0	1	1	0	3	0	0	0	0	0	0	0	0
2000	2B373	246	372	606	628	659	494	410	259	170	156	129	116	43	62	126	171	156	69	34	22	20	18	9	17
2000	2C219	0	0	1	0	2	0	0	0	0	0	0	11	147	236	325	312	301	219	183	132	93	91	62	92
2000	9F924	29	47	144	284	403	376	416	347	284	259	232	304	281	361	406	418	434	332	337	299	232	235	189	277
2000	14290	4	5	7	2	6	5	5	2	0	5	3	0	0	1	3	2	3	1	3	1	1	2	1	0
2001	2B373	148	229	488	540	549	509	388	221	141	131	110	122	136	160	304	300	240	99	63	43	27	18	23	17
2001	2C219	0	0	1	0	0	0	0	0	0	0	1	5	77	171	302	380	475	397	293	183	132	109	87	126
2001	9F924	9	24	34	88	126	109	120	131	92	110	112	125	113	126	169	164	189	157	169	151	139	103	109	141
2001	14290	7	2	7	13	8	7	9	6	3	4	4	6	12	8	8	9	9	12	5	2	5	2	3	6
2002	2B373	104	108	260	250	272	252	179	114	68	53	66	87	100	99	216	242	171	67	42	24	17	19	14	26
2002	2C219	1	0	0	0	0	0	0	0	0	0	0	4	50	149	247	332	420	272	198	157	83	113	57	111
2002	9F924	9	12	14	43	64	67	59	65	56	59	64	69	75	86	115	117	137	132	137	122	92	102	87	109
2002	14290	4	3	2	2	0	2	2	1	5	3	1	1	4	5	5	1	4	3	1	3	4	3	1	4
2003	2B373	65	78	157	153	197	210	132	98	47	67	66	85	62	74	155	179	142	67	42	21	14	16	5	15
2003	2C219	1	0	0	0	0	0	0	0	0	0	0	4	88	170	241	231	362	248	196	149	84	69	65	127
2003	9F924	4	8	19	20	26	13	17	18	11	17	25	22	18	31	31	34	46	34	43	27	29	29	20	31
2003	14290	3	3	3	7	3	3	1	3	1	3	1	1	3	0	2	2	2	2	0	1	2	1	0	2

Grand Total 2B373	697	973	1,795	1,887	2,019	1,694	1,323	847	531	512	464	491	379	459	884	1,007	807	349	234	136	101	95	71	92
Grand Total 2C219	13	15	16	23	21	11	15	12	11	10	17	51	443	852	1,248	1,389	1,685	1,268	993	689	474	448	328	517
Grand Total 9F924	81	149	375	745	1,079	922	992	925	715	654	690	788	751	930	1,071	1,130	1,210	960	962	843	699	640	583	748
Grand Total 14290	21	14	21	26	19	19	19	14	10	16	10	8	20	15	18	17	18	19	10	7	12	8	5	14

<b>GRAND TOTAL</b>	<b>812</b>	<b>1,151</b>	<b>2,207</b>	<b>2,681</b>	<b>3,138</b>	<b>2,646</b>	<b>2,349</b>	<b>1,798</b>	<b>1,267</b>	<b>1,192</b>	<b>1,181</b>	<b>1,338</b>	<b>1,593</b>	<b>2,256</b>	<b>3,221</b>	<b>3,543</b>	<b>3,720</b>	<b>2,596</b>	<b>2,199</b>	<b>1,675</b>	<b>1,286</b>	<b>1,191</b>	<b>987</b>	<b>1,371</b>
--------------------	------------	--------------	--------------	--------------	--------------	--------------	--------------	--------------	--------------	--------------	--------------	--------------	--------------	--------------	--------------	--------------	--------------	--------------	--------------	--------------	--------------	--------------	------------	--------------

200704	200705	200706	200707	200708	200709	200710	200711	200712	200801	200802	200803	200804	Grand Total
4	0	0	0	1	0	1	0	0	0	0	0	0	26
4	0	1	0	0	0	0	1	0	1	0	0	1	54
11	12	9	8	9	18	11	8	8	10	2	9	4	503
0	0	0	1	0	0	0	0	0	0	0	0	0	1
1	1	2	3	1	0	0	1	0	0	1	0	0	44
2	2	1	6	3	0	1	4	0	2	3	1	0	112
14	20	18	21	18	13	25	15	20	17	11	7	6	908
0	0	0	0	0	0	0	0	0	0	0	0	0	2
0	0	0	0	0	0	0	0	1	0	0	0	0	2
0	0	0	0	0	0	1	0	1	0	0	1	0	11
9	10	8	5	11	3	8	3	5	3	4	2	3	289
0	0	0	0	1	0	0	0	0	0	0	0	0	4
9	9	8	6	9	6	12	13	2	8	4	2	2	491
5	12	8	11	8	6	9	8	3	9	5	3	1	302
56	58	51	61	50	49	54	45	34	34	26	34	19	2169
0	0	0	0	0	0	0	0	0	0	0	1	0	10
7	22	20	34	27	18	30	16	2	5	7	6	6	2596
42	85	94	114	116	92	101	61	22	24	34	29	15	1848
97	122	159	154	172	132	141	94	61	71	76	78	33	4931
0	0	0	0	0	0	0	0	0	0	0	0	0	14
25	21	42	36	34	30	19	26	9	6	7	5	3	5255
101	147	233	238	238	198	168	108	56	43	49	57	27	3870
257	294	331	329	356	273	285	232	132	149	152	165	92	9973
0	1	0	0	2	0	0	0	0	0	0	0	0	65
35	53	55	73	73	44	39	25	20	10	11	18	8	5470
158	281	418	501	460	303	285	143	92	67	72	88	46	5653
148	164	187	203	226	177	200	138	105	105	117	114	67	4761
2	4	5	2	3	5	2	1	2	1	0	2	0	186
19	45	79	80	101	67	59	33	18	12	15	21	15	3414
130	270	425	512	608	350	332	129	93	72	92	88	67	5362
105	154	160	185	204	160	170	166	109	99	137	111	67	3719
1	2	4	3	2	4	3	2	1	2	1	3	0	92
22	46	64	78	79	47	51	23	10	9	10	15	10	2611
149	377	541	543	566	381	345	186	92	71	68	96	53	5503
34	51	56	63	63	51	50	71	38	30	36	34	15	1165
1	1	4	0	2	1	3	0	1	1	0	2	0	65
122	197	270	310	325	212	211	137	62	50	55	67	44	19909
591	1,174	1,721	1,925	1,999	1,330	1,242	640	359	289	323	363	210	22715
731	885	979	1,029	1,109	876	944	772	512	518	561	554	306	28418
4	8	13	6	10	10	8	3	4	4	1	8	0	439

1,448	2,264	2,983	3,270	3,443	2,428	2,405	1,552	937	861	940	992	560	71,481
-------	-------	-------	-------	-------	-------	-------	-------	-----	-----	-----	-----	-----	--------



		yearmonth										
MODEL_YEAR	Data	200504	200505	200506	200507	200508	200509	200510	200511	200512	200601	
1995	Sum of BASE_2B373	0	0	0	0	2	0	2	2	0	0	
	Sum of BASE_2C219	2	2	5	6	6	3	2	3	0	0	
	Sum of BASE_9F924	3	2	11	17	21	23	34	19	18	19	
	Sum of BASE_14290	0	0	0	0	0	0	0	0	0	0	
1996	Sum of BASE_2B373	0	0	0	2	1	2	1	1	2	1	
	Sum of BASE_2C219	8	2	4	9	7	5	8	1	2	3	
	Sum of BASE_9F924	8	6	17	29	65	29	48	44	30	30	
	Sum of BASE_14290	0	0	0	0	0	0	0	1	0	0	
1997	Sum of BASE_2B373	0	0	0	0	0	0	0	0	0	0	
	Sum of BASE_2C219	0	1	0	1	1	0	0	0	0	0	
	Sum of BASE_9F924	1	1	7	19	13	12	8	16	10	7	
	Sum of BASE_14290	0	0	0	1	0	0	1	1	0	0	
1998	Sum of BASE_2B373	24	26	24	25	24	20	16	24	32	28	
	Sum of BASE_2C219	1	10	4	7	4	3	5	8	9	7	
	Sum of BASE_9F924	5	9	35	72	113	100	95	83	77	55	
	Sum of BASE_14290	1	1	0	1	0	2	0	0	1	0	
1999	Sum of BASE_2B373	110	160	260	289	315	207	195	128	71	76	
	Sum of BASE_2C219	0	0	1	0	1	0	0	0	0	0	
	Sum of BASE_9F924	13	40	94	173	248	193	195	202	137	98	
	Sum of BASE_14290	2	0	2	0	2	0	1	0	0	1	
2000	Sum of BASE_2B373	246	372	606	628	659	494	410	259	170	156	
	Sum of BASE_2C219	0	0	1	0	2	0	0	0	0	0	
	Sum of BASE_9F924	29	47	144	284	403	376	416	347	284	259	
	Sum of BASE_14290	4	5	7	2	6	5	5	2	0	5	
2001	Sum of BASE_2B373	148	229	488	540	549	509	388	221	141	131	
	Sum of BASE_2C219	0	0	1	0	0	0	0	0	0	0	
	Sum of BASE_9F924	9	24	34	88	126	109	120	131	92	110	
	Sum of BASE_14290	7	2	7	13	8	7	9	6	3	4	
2002	Sum of BASE_2B373	104	108	260	250	272	252	179	114	68	53	
	Sum of BASE_2C219	1	0	0	0	0	0	0	0	0	0	
	Sum of BASE_9F924	9	12	14	43	64	67	59	65	56	59	
	Sum of BASE_14290	4	3	2	2	0	2	2	1	5	3	
2003	Sum of BASE_2B373	65	78	157	153	197	210	132	98	47	67	
	Sum of BASE_2C219	1	0	0	0	0	0	0	0	0	0	
	Sum of BASE_9F924	4	8	19	20	26	13	17	18	11	17	
	Sum of BASE_14290	3	3	3	7	3	3	1	3	1	3	
Total Sum of BASE_2B373		697	973	1795	1887	2019	1694	1323	847	531	512	
Total Sum of BASE_2C219		13	15	16	23	21	11	15	12	11	10	
Total Sum of BASE_9F924		81	149	375	745	1079	922	992	925	715	654	
Total Sum of BASE_14290		21	14	21	26	19	19	19	14	10	16	

200602	200603	200604	200605	200606	200607	200608	200609	200610	200611	200612	200701	200702	200703
2	0	1	3	0	0	1	0	2	0	1	3	0	1
4	0	2	3	0	1	4	0	0	0	1	1	0	1
13	19	13	18	11	21	23	19	16	16	15	10	13	10
0	0	0	0	0	0	0	0	0	0	0	0	0	0
3	3	0	4	1	2	4	1	1	0	0	0	4	1
4	6	2	1	1	3	5	5	2	1	1	0	5	2
27	33	33	38	32	29	34	29	29	22	23	30	21	17
0	0	0	0	0	0	0	1	0	0	0	0	0	0
0	0	0	0	1	0	0	0	0	0	0	0	0	0
2	0	1	0	0	0	0	0	0	0	1	0	1	0
11	6	8	5	8	14	13	13	11	8	8	4	8	4
0	0	0	0	0	0	0	0	0	0	0	0	0	0
20	16	14	23	14	18	10	5	10	2	8	8	6	4
6	13	11	22	11	16	16	6	11	7	11	7	6	13
79	70	67	71	81	86	98	82	59	71	59	41	37	53
0	0	0	0	0	0	0	0	1	0	0	0	0	2
68	62	23	34	67	95	83	41	40	24	14	13	10	11
0	8	65	100	121	114	102	121	110	60	68	58	45	45
127	140	143	194	218	247	236	162	161	127	102	86	99	106
1	0	1	1	0	3	0	0	0	0	0	0	0	0
129	116	43	62	126	171	156	69	34	22	20	18	9	17
0	11	147	236	325	312	301	219	183	132	93	91	62	92
232	304	281	361	406	418	434	332	337	299	232	235	189	277
3	0	0	1	3	2	3	1	3	1	1	2	1	0
110	122	136	160	304	300	240	99	63	43	27	18	23	17
1	5	77	171	302	380	475	397	293	183	132	109	87	126
112	125	113	126	169	164	189	157	169	151	139	103	109	141
4	6	12	8	8	9	9	12	5	2	5	2	3	6
66	87	100	99	216	242	171	67	42	24	17	19	14	26
0	4	50	149	247	332	420	272	198	157	83	113	57	111
64	69	75	86	115	117	137	132	137	122	92	102	87	109
1	1	4	5	5	1	4	3	1	3	4	3	1	4
66	85	62	74	155	179	142	67	42	21	14	16	5	15
0	4	88	170	241	231	362	248	196	149	84	69	65	127
25	22	18	31	31	34	46	34	43	27	29	29	20	31
1	1	3	0	2	2	2	2	0	1	2	1	0	2
464	491	379	459	884	1007	807	349	234	136	101	95	71	92
17	51	443	852	1248	1389	1685	1268	993	689	474	448	328	517
690	788	751	930	1071	1130	1210	960	962	843	699	640	583	748
10	8	20	15	18	17	18	19	10	7	12	8	5	14

200704	200705	200706	200707	200708	200709	200710	200711	200712	200801	200802	200803	200804	Grand Total
4	0	0	0	1	0	1	0	0	0	0	0	0	26
4	0	1	0	0	0	0	1	0	1	0	0	1	54
11	12	9	8	9	18	11	8	8	10	2	9	4	503
0	0	0	1	0	0	0	0	0	0	0	0	0	1
1	1	2	3	1	0	0	1	0	0	1	0	0	44
2	2	1	6	3	0	1	4	0	2	3	1	0	112
14	20	18	21	18	13	25	15	20	17	11	7	6	908
0	0	0	0	0	0	0	0	0	0	0	0	0	2
0	0	0	0	0	0	0	0	1	0	0	0	0	2
0	0	0	0	0	0	1	0	1	0	0	1	0	11
9	10	8	5	11	3	8	3	5	3	4	2	3	289
0	0	0	0	1	0	0	0	0	0	0	0	0	4
9	9	8	6	9	6	12	13	2	8	4	2	2	491
5	12	8	11	8	6	9	8	3	9	5	3	1	302
56	58	51	61	50	49	54	45	34	34	26	34	19	2169
0	0	0	0	0	0	0	0	0	0	0	1	0	10
7	22	20	34	27	18	30	16	2	5	7	6	6	2596
42	85	94	114	116	92	101	61	22	24	34	29	15	1848
97	122	159	154	172	132	141	94	61	71	76	78	33	4931
0	0	0	0	0	0	0	0	0	0	0	0	0	14
25	21	42	36	34	30	19	26	9	6	7	5	3	5255
101	147	233	238	238	198	168	108	56	43	49	57	27	3870
257	294	331	329	356	273	285	232	132	149	152	165	92	9973
0	1	0	0	2	0	0	0	0	0	0	0	0	65
35	53	55	73	73	44	39	25	20	10	11	18	8	5470
158	281	418	501	460	303	285	143	92	67	72	88	46	5653
148	164	187	203	226	177	200	138	105	105	117	114	67	4761
2	4	5	2	3	5	2	1	2	1	0	2	0	186
19	45	79	80	101	67	59	33	18	12	15	21	15	3414
130	270	425	512	608	350	332	129	93	72	92	88	67	5362
105	154	160	185	204	160	170	166	109	99	137	111	67	3719
1	2	4	3	2	4	3	2	1	2	1	3	0	92
22	46	64	78	79	47	51	23	10	9	10	15	10	2611
149	377	541	543	566	381	345	186	92	71	68	96	53	5503
34	51	56	63	63	51	50	71	38	30	36	34	15	1165
1	1	4	0	2	1	3	0	1	1	0	2	0	65
122	197	270	310	325	212	211	137	62	50	55	67	44	19909
591	1174	1721	1925	1999	1330	1242	640	359	289	323	363	210	22715
731	885	979	1029	1109	876	944	772	512	518	561	554	306	28418
4	8	13	6	10	10	8	3	4	4	1	8	0	439

MODEL_YEAR	yearmonth	BASE_2B373	BASE_2C219	BASE_9F924	BASE_14290
1995	200504	0	2	3	0
1995	200505	0	2	2	0
1995	200506	0	5	11	0
1995	200507	0	6	17	0
1995	200508	2	6	21	0
1995	200509	0	3	23	0
1995	200510	2	2	34	0
1995	200511	2	3	19	0
1995	200512	0	0	18	0
1995	200601	0	0	19	0
1995	200602	2	4	13	0
1995	200603	0	0	19	0
1995	200604	1	2	13	0
1995	200605	3	3	18	0
1995	200606	0	0	11	0
1995	200607	0	1	21	0
1995	200608	1	4	23	0
1995	200609	0	0	19	0
1995	200610	2	0	16	0
1995	200611	0	0	16	0
1995	200612	1	1	15	0
1995	200701	3	1	10	0
1995	200702	0	0	13	0
1995	200703	1	1	10	0
1995	200704	4	4	11	0
1995	200705	0	0	12	0
1995	200706	0	1	9	0
1995	200707	0	0	8	1
1995	200708	1	0	9	0
1995	200709	0	0	18	0
1995	200710	1	0	11	0
1995	200711	0	1	8	0
1995	200712	0	0	8	0
1995	200801	0	1	10	0
1995	200802	0	0	2	0
1995	200803	0	0	9	0
1995	200804	0	1	4	0
1996	200504	0	8	8	0
1996	200505	0	2	6	0
1996	200506	0	4	17	0
1996	200507	2	9	29	0
1996	200508	1	7	65	0
1996	200509	2	5	29	0
1996	200510	1	8	48	0
1996	200511	1	1	44	1
1996	200512	2	2	30	0
1996	200601	1	3	30	0
1996	200602	3	4	27	0
1996	200603	3	6	33	0
1996	200604	0	2	33	0
1996	200605	4	1	38	0
1996	200606	1	1	32	0
1996	200607	2	3	29	0
1996	200608	4	5	34	0
1996	200609	1	5	29	1
1996	200610	1	2	29	0
1996	200611	0	1	22	0
1996	200612	0	1	23	0
1996	200701	0	0	30	0

1996	200702	4	5	21	0
1996	200703	1	2	17	0
1996	200704	1	2	14	0
1996	200705	1	2	20	0
1996	200706	2	1	18	0
1996	200707	3	6	21	0
1996	200708	1	3	18	0
1996	200709	0	0	13	0
1996	200710	0	1	25	0
1996	200711	1	4	15	0
1996	200712	0	0	20	0
1996	200801	0	2	17	0
1996	200802	1	3	11	0
1996	200803	0	1	7	0
1996	200804	0	0	6	0
1997	200504	0	0	1	0
1997	200505	0	1	1	0
1997	200506	0	0	7	0
1997	200507	0	1	19	1
1997	200508	0	1	13	0
1997	200509	0	0	12	0
1997	200510	0	0	8	1
1997	200511	0	0	16	1
1997	200512	0	0	10	0
1997	200601	0	0	7	0
1997	200602	0	2	11	0
1997	200603	0	0	6	0
1997	200604	0	1	8	0
1997	200605	0	0	5	0
1997	200606	1	0	8	0
1997	200607	0	0	14	0
1997	200608	0	0	13	0
1997	200609	0	0	13	0
1997	200610	0	0	11	0
1997	200611	0	0	8	0
1997	200612	0	1	8	0
1997	200701	0	0	4	0
1997	200702	0	1	8	0
1997	200703	0	0	4	0
1997	200704	0	0	9	0
1997	200705	0	0	10	0
1997	200706	0	0	8	0
1997	200707	0	0	5	0
1997	200708	0	0	11	1
1997	200709	0	0	3	0
1997	200710	0	1	8	0
1997	200711	0	0	3	0
1997	200712	1	1	5	0
1997	200801	0	0	3	0
1997	200802	0	0	4	0
1997	200803	0	1	2	0
1997	200804	0	0	3	0
1998	200504	24	1	5	1
1998	200505	26	10	9	1
1998	200506	24	4	35	0
1998	200507	25	7	72	1
1998	200508	24	4	113	0
1998	200509	20	3	100	2
1998	200510	16	5	95	0
1998	200511	24	8	83	0

1998	200512	32	9	77	1
1998	200601	28	7	55	0
1998	200602	20	6	79	0
1998	200603	16	13	70	0
1998	200604	14	11	67	0
1998	200605	23	22	71	0
1998	200606	14	11	81	0
1998	200607	18	16	86	0
1998	200608	10	16	98	0
1998	200609	5	6	82	0
1998	200610	10	11	59	1
1998	200611	2	7	71	0
1998	200612	8	11	59	0
1998	200701	8	7	41	0
1998	200702	6	6	37	0
1998	200703	4	13	53	2
1998	200704	9	5	56	0
1998	200705	9	12	58	0
1998	200706	8	8	51	0
1998	200707	6	11	61	0
1998	200708	9	8	50	0
1998	200709	6	6	49	0
1998	200710	12	9	54	0
1998	200711	13	8	45	0
1998	200712	2	3	34	0
1998	200801	8	9	34	0
1998	200802	4	5	26	0
1998	200803	2	3	34	1
1998	200804	2	1	19	0
1999	200504	110	0	13	2
1999	200505	160	0	40	0
1999	200506	260	1	94	2
1999	200507	289	0	173	0
1999	200508	315	1	248	2
1999	200509	207	0	193	0
1999	200510	195	0	195	1
1999	200511	128	0	202	0
1999	200512	71	0	137	0
1999	200601	76	0	98	1
1999	200602	68	0	127	1
1999	200603	62	8	140	0
1999	200604	23	65	143	1
1999	200605	34	100	194	1
1999	200606	67	121	218	0
1999	200607	95	114	247	3
1999	200608	83	102	236	0
1999	200609	41	121	162	0
1999	200610	40	110	161	0
1999	200611	24	60	127	0
1999	200612	14	68	102	0
1999	200701	13	58	86	0
1999	200702	10	45	99	0
1999	200703	11	45	106	0
1999	200704	7	42	97	0
1999	200705	22	85	122	0
1999	200706	20	94	159	0
1999	200707	34	114	154	0
1999	200708	27	116	172	0
1999	200709	18	92	132	0
1999	200710	30	101	141	0

1999	200711	16	61	94	0
1999	200712	2	22	61	0
1999	200801	5	24	71	0
1999	200802	7	34	76	0
1999	200803	6	29	78	0
1999	200804	6	15	33	0
2000	200504	246	0	29	4
2000	200505	372	0	47	5
2000	200506	606	1	144	7
2000	200507	628	0	284	2
2000	200508	659	2	403	6
2000	200509	494	0	376	5
2000	200510	410	0	416	5
2000	200511	259	0	347	2
2000	200512	170	0	284	0
2000	200601	156	0	259	5
2000	200602	129	0	232	3
2000	200603	116	11	304	0
2000	200604	43	147	281	0
2000	200605	62	236	361	1
2000	200606	126	325	406	3
2000	200607	171	312	418	2
2000	200608	156	301	434	3
2000	200609	69	219	332	1
2000	200610	34	183	337	3
2000	200611	22	132	299	1
2000	200612	20	93	232	1
2000	200701	18	91	235	2
2000	200702	9	62	189	1
2000	200703	17	92	277	0
2000	200704	25	101	257	0
2000	200705	21	147	294	1
2000	200706	42	233	331	0
2000	200707	36	238	329	0
2000	200708	34	238	356	2
2000	200709	30	198	273	0
2000	200710	19	168	285	0
2000	200711	26	108	232	0
2000	200712	9	56	132	0
2000	200801	6	43	149	0
2000	200802	7	49	152	0
2000	200803	5	57	165	0
2000	200804	3	27	92	0
2001	200504	148	0	9	7
2001	200505	229	0	24	2
2001	200506	488	1	34	7
2001	200507	540	0	88	13
2001	200508	549	0	126	8
2001	200509	509	0	109	7
2001	200510	388	0	120	9
2001	200511	221	0	131	6
2001	200512	141	0	92	3
2001	200601	131	0	110	4
2001	200602	110	1	112	4
2001	200603	122	5	125	6
2001	200604	136	77	113	12
2001	200605	160	171	126	8
2001	200606	304	302	169	8
2001	200607	300	380	164	9
2001	200608	240	475	189	9

2001	200609	99	397	157	12
2001	200610	63	293	169	5
2001	200611	43	183	151	2
2001	200612	27	132	139	5
2001	200701	18	109	103	2
2001	200702	23	87	109	3
2001	200703	17	126	141	6
2001	200704	35	158	148	2
2001	200705	53	281	164	4
2001	200706	55	418	187	5
2001	200707	73	501	203	2
2001	200708	73	460	226	3
2001	200709	44	303	177	5
2001	200710	39	285	200	2
2001	200711	25	143	138	1
2001	200712	20	92	105	2
2001	200801	10	67	105	1
2001	200802	11	72	117	0
2001	200803	18	88	114	2
2001	200804	8	46	67	0
2002	200504	104	1	9	4
2002	200505	108	0	12	3
2002	200506	260	0	14	2
2002	200507	250	0	43	2
2002	200508	272	0	64	0
2002	200509	252	0	67	2
2002	200510	179	0	59	2
2002	200511	114	0	65	1
2002	200512	68	0	56	5
2002	200601	53	0	59	3
2002	200602	66	0	64	1
2002	200603	87	4	69	1
2002	200604	100	50	75	4
2002	200605	99	149	86	5
2002	200606	216	247	115	5
2002	200607	242	332	117	1
2002	200608	171	420	137	4
2002	200609	67	272	132	3
2002	200610	42	198	137	1
2002	200611	24	157	122	3
2002	200612	17	83	92	4
2002	200701	19	113	102	3
2002	200702	14	57	87	1
2002	200703	26	111	109	4
2002	200704	19	130	105	1
2002	200705	45	270	154	2
2002	200706	79	425	160	4
2002	200707	80	512	185	3
2002	200708	101	608	204	2
2002	200709	67	350	160	4
2002	200710	59	332	170	3
2002	200711	33	129	166	2
2002	200712	18	93	109	1
2002	200801	12	72	99	2
2002	200802	15	92	137	1
2002	200803	21	88	111	3
2002	200804	15	67	67	0
2003	200504	65	1	4	3
2003	200505	78	0	8	3
2003	200506	157	0	19	3



2003	200507	153	0	20	7
2003	200508	197	0	26	3
2003	200509	210	0	13	3
2003	200510	132	0	17	1
2003	200511	98	0	18	3
2003	200512	47	0	11	1
2003	200601	67	0	17	3
2003	200602	66	0	25	1
2003	200603	85	4	22	1
2003	200604	62	88	18	3
2003	200605	74	170	31	0
2003	200606	155	241	31	2
2003	200607	179	231	34	2
2003	200608	142	362	46	2
2003	200609	67	248	34	2
2003	200610	42	196	43	0
2003	200611	21	149	27	1
2003	200612	14	84	29	2
2003	200701	16	69	29	1
2003	200702	5	65	20	0
2003	200703	15	127	31	2
2003	200704	22	149	34	1
2003	200705	46	377	51	1
2003	200706	64	541	56	4
2003	200707	78	543	63	0
2003	200708	79	566	63	2
2003	200709	47	381	51	1
2003	200710	51	345	50	3
2003	200711	23	186	71	0
2003	200712	10	92	38	1
2003	200801	9	71	30	1
2003	200802	10	68	36	0
2003	200803	15	96	34	2
2003	200804	10	53	15	0