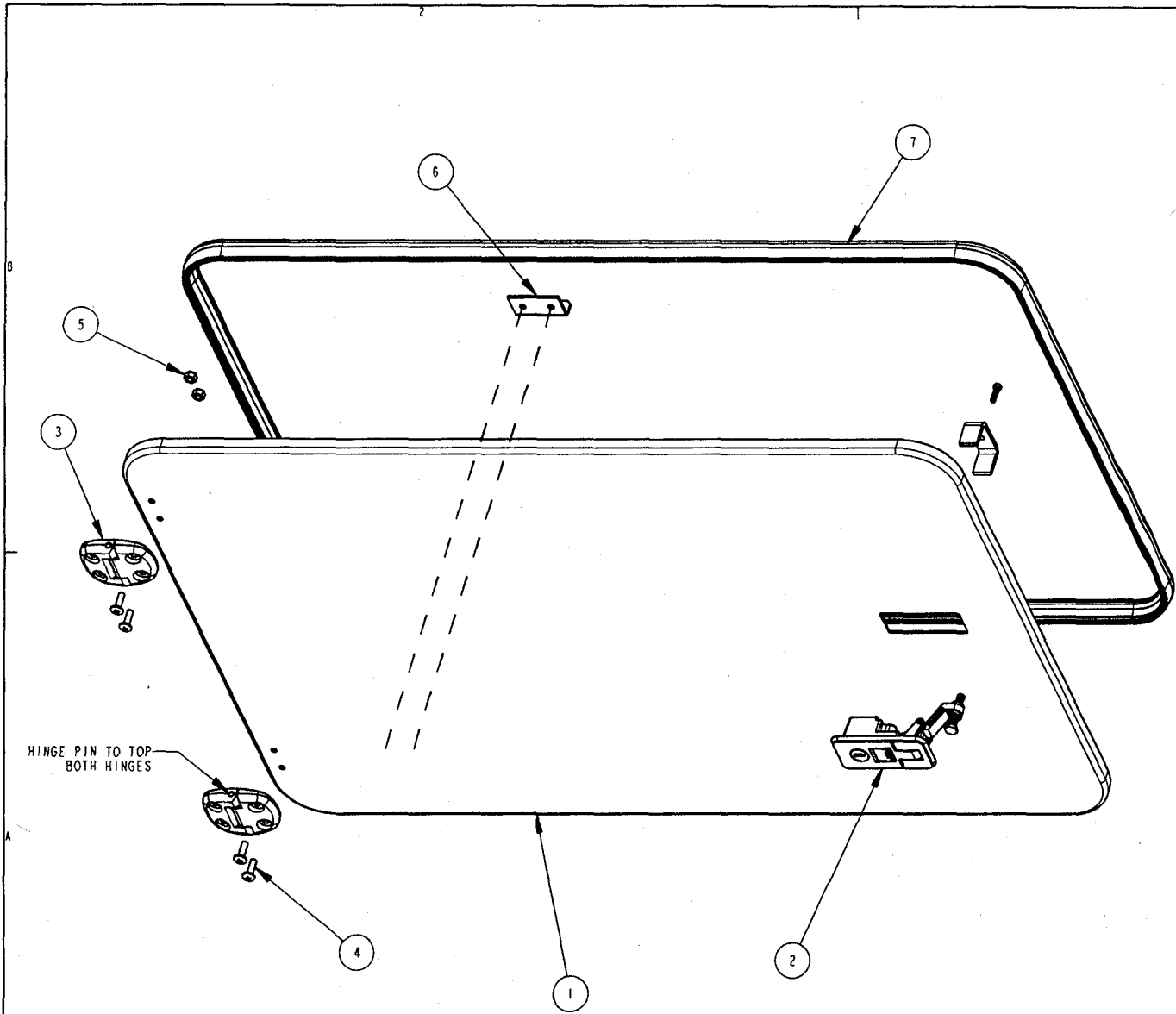


**PE07-029**

**Attachment 32**

**Revised seal orientation**

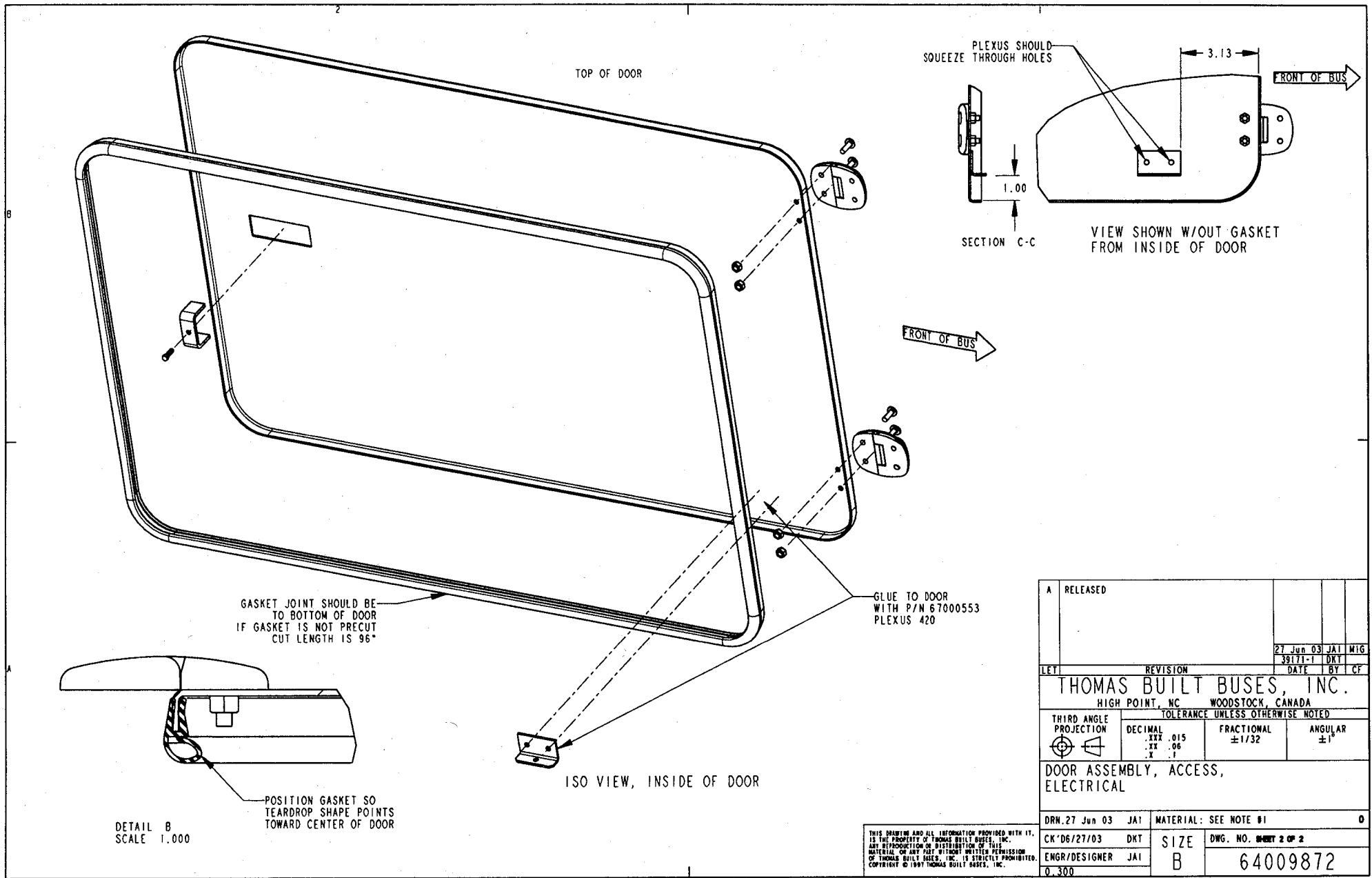


ITEM	QUANTITY	PART NUMBER	DESCRIPTION
1	1	64009871	DOOR PANEL, ACCESS,
2	1	64009870	LEVER LATCH, LOCKING
3	2	67000692	ELECTRICAL PANEL ACCESS HINGE
4	4	69002283	MACHINE SCREW, STAINLESS, TRUSS
5	4	61370767	LOCKNUT, #10-24, ZINC COATING
6	1	67000746	DOOR STOP LANYARD MOUNTING BRACKET
7	1	65010912	GASKET
8	1	67000553	STRUCTURAL ADHESIVE,

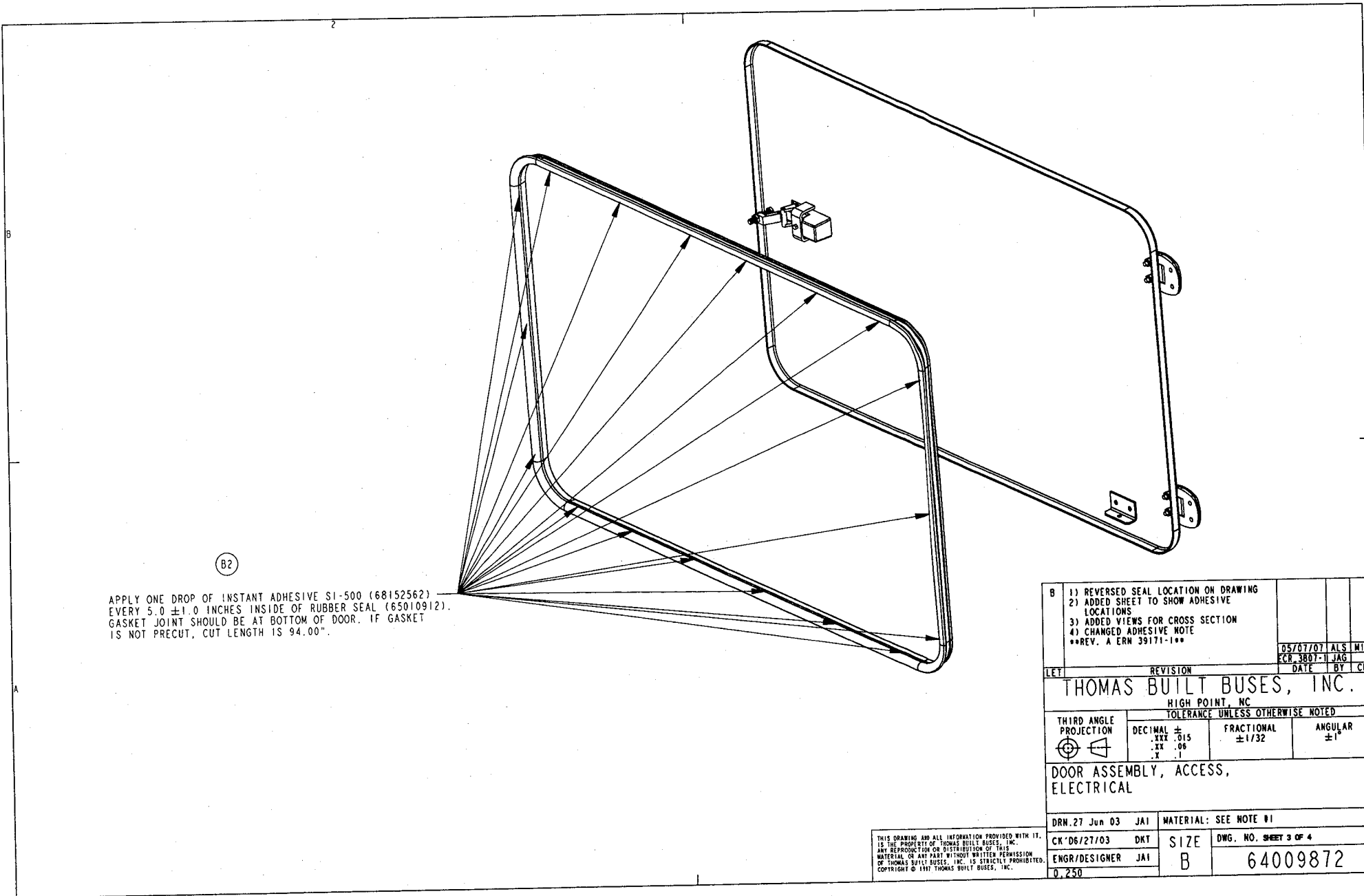
- NOTES:  
 1) MATERIAL: SEE DETAIL DWGS  
 2) BLANK: N/A  
 3) CALCULATED WEIGHT: 13.852  
 4) BURRS: N/A  
 5) FINISH: N/A  
 6) COLOR: SEE DETAIL DWGS  
 7) BENDS: N/A  
 8) WELDS: N/A  
 9) REFERENCE: N/A

A		RELEASED					
				27 Jun 03	JAI	MIG	
				39171-1	DKT		
LET	REVISION			DATE	BY	CF	
<b>THOMAS BUILT BUSES, INC.</b>							
HIGH POINT, NC      WOODSTOCK, CANADA							
THIRD ANGLE PROJECTION		TOLERANCE UNLESS OTHERWISE NOTED					
		DECIMAL	.XX ±.015	FRACTIONAL	±1/32	ANGULAR	±1°
			.XX ±.06				
			.X ±.1				
DOOR ASSEMBLY, ACCESS, ELECTRICAL							
DRN. 27 Jun 03		JAI	MATERIAL: SEE NOTE #1				0
CK '06/27/03		DKT	SIZE	DWG. NO. <b>64009872</b>			
ENGR/DESIGNER		JAI	B				

THIS DRAWING AND ALL INFORMATION PROVIDED WITH IT, IS THE PROPERTY OF THOMAS BUILT BUSES, INC. ANY REPRODUCTION OR DISTRIBUTION OF THIS MATERIAL OR ANY PART THEREOF WITHOUT PERMISSION OF THOMAS BUILT BUSES, INC. IS STRICTLY PROHIBITED. COPYRIGHT © 1997 THOMAS BUILT BUSES, INC.



A		RELEASED					
				27 Jun 03	JAI	MIG	
				39171-1	DKT		
LET	REVISION	DATE	BY	CF			
<b>THOMAS BUILT BUSES, INC.</b>							
HIGH POINT, NC				WOODSTOCK, CANADA			
TOLERANCE UNLESS OTHERWISE NOTED							
THIRD ANGLE PROJECTION 	DECIMAL	FRACTIONAL		ANGULAR			
	.XXX .015	±1/32		±1°			
	.XX .06						
DOOR ASSEMBLY, ACCESS, ELECTRICAL							
DRN. 27 Jun 03		JAI	MATERIAL: SEE NOTE #1			0	
CK'D 06/27/03		DKT	SIZE	DWG. NO. <b>64009872</b>			
ENGR/DESIGNER		JAI	B				
				0.300			



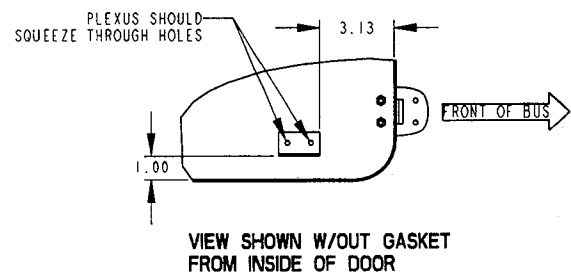
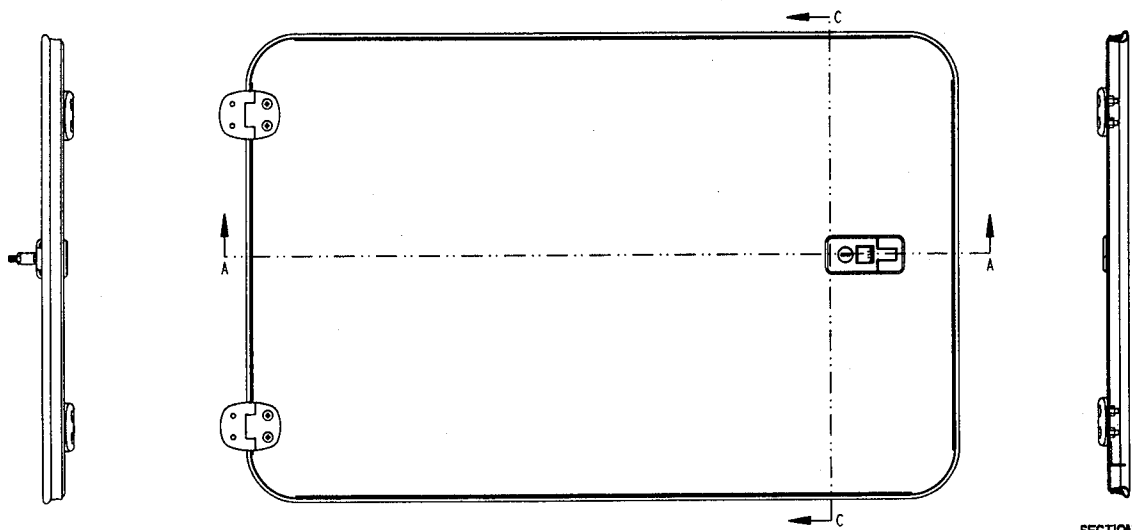
B2

APPLY ONE DROP OF INSTANT ADHESIVE S1-500 (68152562) EVERY 5.0 ± 1.0 INCHES INSIDE OF RUBBER SEAL (65010912). GASKET JOINT SHOULD BE AT BOTTOM OF DOOR. IF GASKET IS NOT PRECUT, CUT LENGTH IS 94.00".

B	1) REVERSED SEAL LOCATION ON DRAWING				
	2) ADDED SHEET TO SHOW ADHESIVE LOCATIONS				
	3) ADDED VIEWS FOR CROSS SECTION				
	4) CHANGED ADHESIVE NOTE				
	**REV. A ERN 39171-1**				
		05/07/07	ALS	MTG	
		ECR 3807-1	JAG		
LET	REVISION	DATE	BY	CF	
<b>THOMAS BUILT BUSES, INC.</b>					
HIGH POINT, NC					
TOLERANCE UNLESS OTHERWISE NOTED					
THIRD ANGLE PROJECTION	DECIMAL ±	FRACTIONAL	ANGULAR		
	.XXX .015	± 1/32	± 1°		
	.XX .06				
	.X .1				
<b>DOOR ASSEMBLY, ACCESS, ELECTRICAL</b>					
DRN.27 Jun 03	JAI	MATERIAL: SEE NOTE #1			0
CK'06/27/03	DKT	SIZE	DWG. NO. SHEET 3 OF 4		
ENGR/DESIGNER	JAI	B	64009872		
D.250					

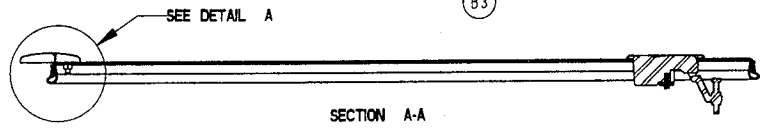
THIS DRAWING AND ALL INFORMATION PROVIDED WITH IT, IS THE PROPERTY OF THOMAS BUILT BUSES, INC. ANY REPRODUCTION OR DISTRIBUTION OF THIS MATERIAL OR ANY PART WITHOUT WRITTEN PERMISSION OF THOMAS BUILT BUSES, INC. IS STRICTLY PROHIBITED. COPYRIGHT © 1997 THOMAS BUILT BUSES, INC.

(B3)

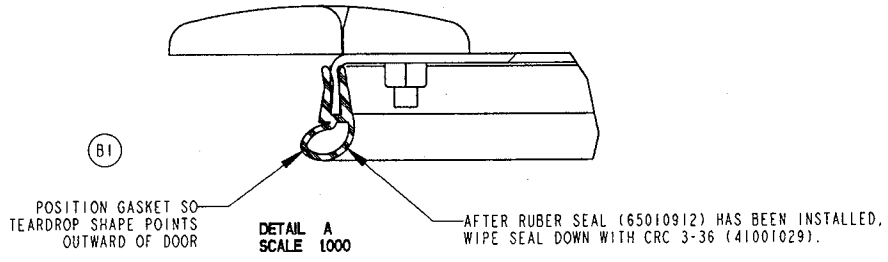


SECTION C-C

(B3)



(B1)



B	1) REVERSED SEAL LOCATION ON DRAWING			
	2) ADDED SHEET TO SHOW ADHESIVE LOCATIONS			
	3) ADDED VIEWS FOR CROSS SECTION			
	4) CHANGED ADHESIVE NOTE			
	**REV. A ERN 39171-1**			
		05/07/07	ALS	MIG
		CR 3807-1	JAG	
LET	REVISION	DATE	BY	CF
<b>THOMAS BUILT BUSES, INC.</b>				
HIGH POINT, NC				
TOLERANCE UNLESS OTHERWISE NOTED				
THIRD ANGLE PROJECTION	DECIMAL ±	FRACTIONAL	ANGULAR	
	.XXX .015	±1/32	±1°	
	.XX .06			
	.X .1			
DOOR ASSEMBLY, ACCESS, ELECTRICAL				
DRN.27 Jun 03	JAI	MATERIAL: SEE NOTE #1		0
CK'D6/27/03	DKT	SIZE	DWG. NO. SHEET 4 OF 4	
ENGR/DESIGNER	JAI	B	64009872	
0.200				

THIS DRAWING AND ALL INFORMATION PROVIDED WITH IT, IS THE PROPERTY OF THOMAS BUILT BUSES, INC. ANY REPRODUCTION OR DISTRIBUTION OF THIS MATERIAL OR ANY PART WITHOUT WRITTEN PERMISSION OF THOMAS BUILT BUSES, INC. IS STRICTLY PROHIBITED. COPYRIGHT © 1997 THOMAS BUILT BUSES, INC.