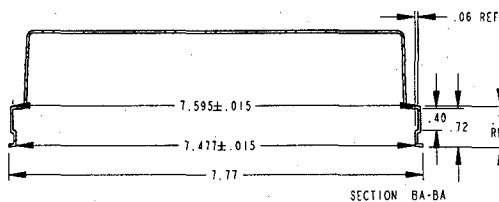
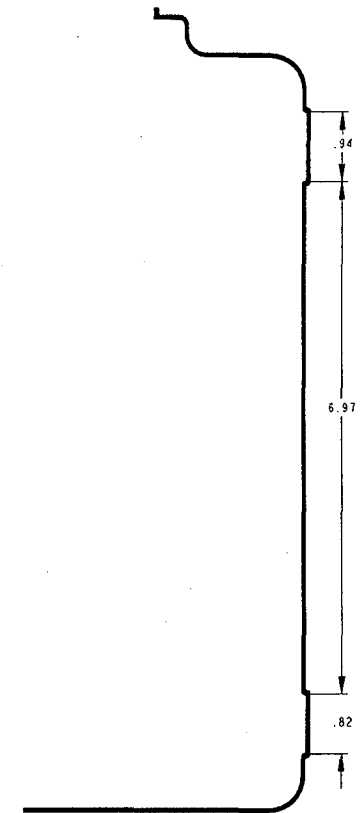
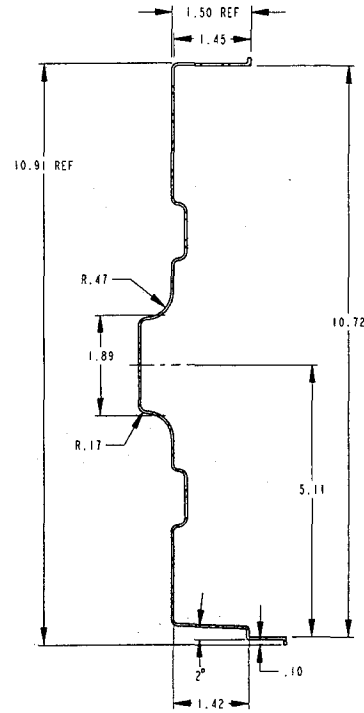
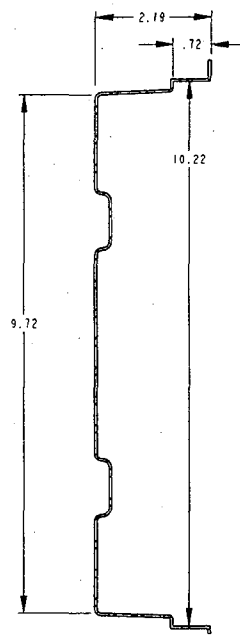
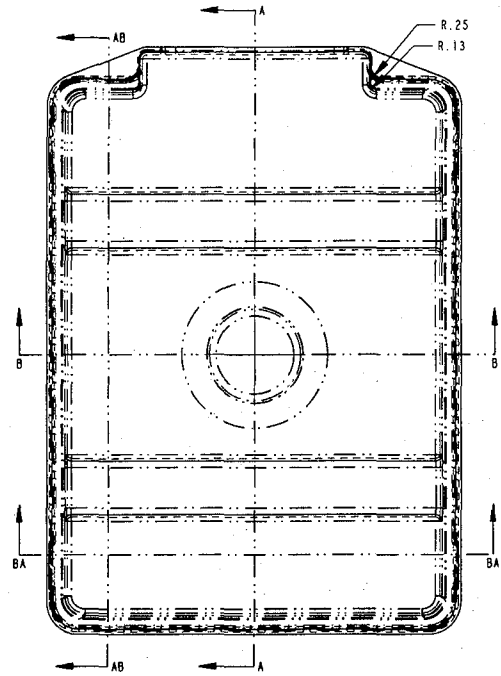
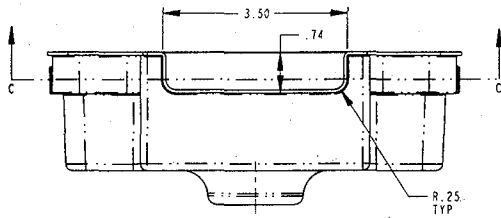


**PE07-029**

**Attachment 29**

**Snap-on PC Board Cover**



SECTION AB-AB

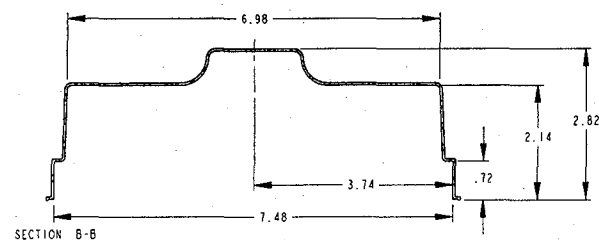
SECTION A-A

SECTION C-C  
SCALE 0.800

**INACTIVE**  
See title block for details

- NOTES:  
 1) MATERIAL: HI-IMPACT STYRENE, PLASTIC, .045" STARTING THICKNESS  
 2) BLANK: N/A  
 3) CALCULATED WEIGHT: 2.016 LBS.  
 4) BURRS: N/A  
 5) FINISH: SMOOTH  
 6) COLOR: BLACK  
 7) BENDS: N/A  
 8) WELDS: N/A  
 9) REFERENCE: N/A  
 10) MODEL GEOMETRY CONTROLLED BY CAD FILE

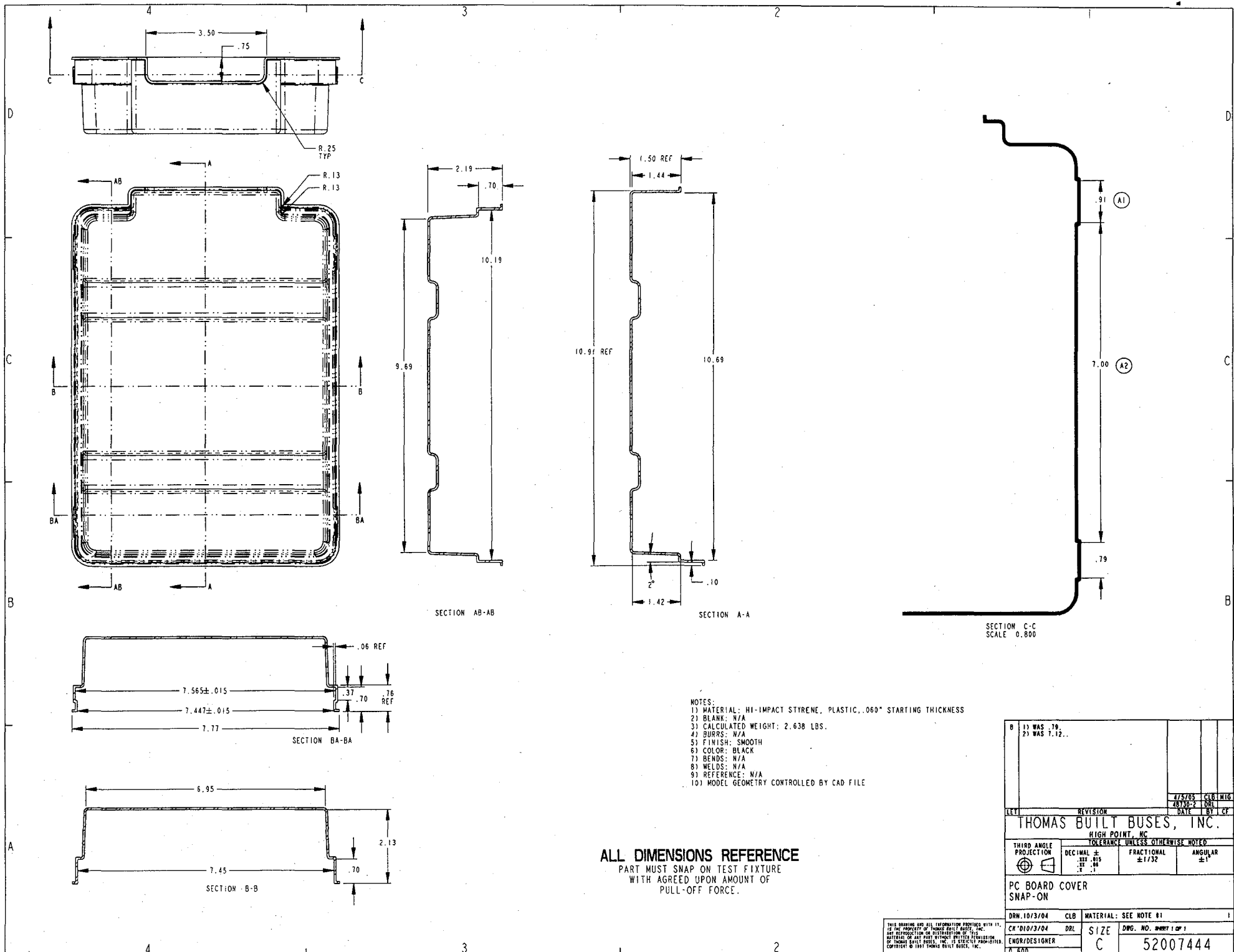
**ALL DIMENSIONS REFERENCE**  
 PART MUST SNAP ON TEST FIXTURE  
 WITH AGREED UPON AMOUNT OF  
 PULL-OFF FORCE.



SECTION B-B

E INACTIVE, REPLACED BY 134172. **REV D ERN 89404-1**			
DATE	BY	CHK'D	TRG
11/03/06	CLB	11/03/06	CLB
THOMAS BUILT BUSES, INC.			
HIGH POINT, NC			
TOLERANCE UNLESS OTHERWISE NOTED			
THIRD ANGLE PROJECTION	DECIMAL ± .001	FRACTIONAL ± 1/32	ANGULAR ± 1°
PC BOARD COVER SNAP-ON			
DRW. 10/3/04	CLB	MATERIAL: SEE NOTE #1	6+
CK'D 01073/04	DRL	SIZE C	DWG. NO. 52007444
ENGR/DESIGNER			0.580

THIS DRAWING AND ALL INFORMATION CONTAINED HEREIN IS THE PROPERTY OF THOMAS BUILT BUSES, INC. AND IS NOT TO BE REPRODUCED OR DISTRIBUTED WITHOUT THE WRITTEN PERMISSION OF THOMAS BUILT BUSES, INC. © 1997 THOMAS BUILT BUSES, INC.



SECTION AB-AB

SECTION A-A

SECTION C-C  
SCALE 0.800

SECTION BA-BA

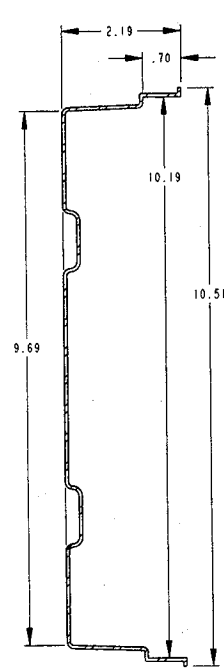
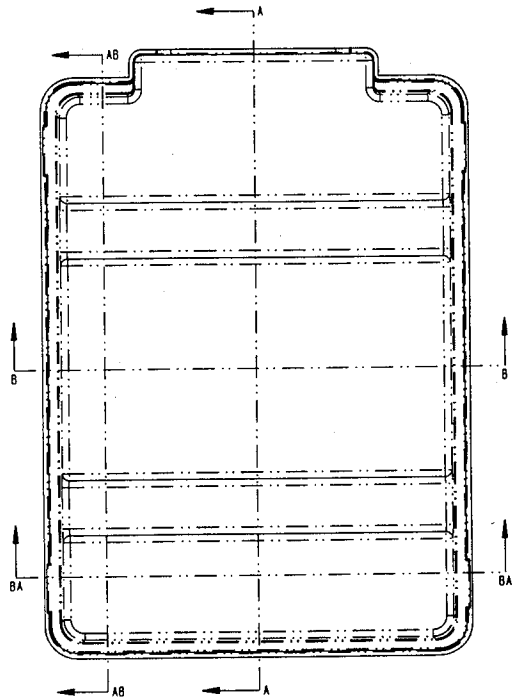
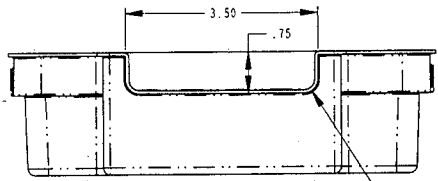
SECTION B-B

- NOTES:  
 1) MATERIAL: HI-IMPACT STYRENE, PLASTIC, .060" STARTING THICKNESS  
 2) BLANK: N/A  
 3) CALCULATED WEIGHT: 2.638 LBS.  
 4) BURRS: N/A  
 5) FINISH: SMOOTH  
 6) COLOR: BLACK  
 7) BENDS: N/A  
 8) WELDS: N/A  
 9) REFERENCE: N/A  
 10) MODEL GEOMETRY CONTROLLED BY CAD FILE

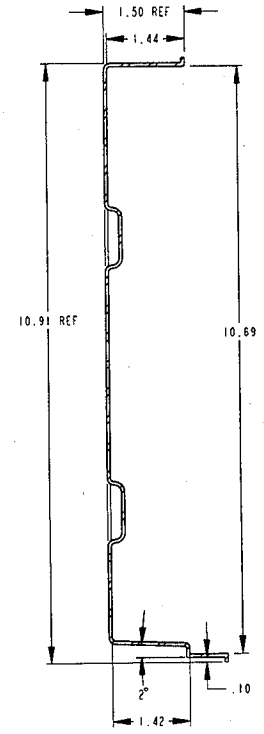
**ALL DIMENSIONS REFERENCE**  
 PART MUST SNAP ON TEST FIXTURE  
 WITH AGREED UPON AMOUNT OF  
 PULL-OFF FORCE.

B 13 WAS .19. 23 WAS 7.12..		4/5/05	CLB	MIG
		08/10/04	DRL	
REVISION		DATE	BY	CF
<b>THOMAS BUILT BUSES, INC.</b>				
HIGH POINT, NC				
TOLERANCE UNLESS OTHERWISE NOTED				
THIRD ANGLE PROJECTION	DECIMAL ± .001, .015	FRACTIONAL ± 1/32	ANGULAR ± 1°	
PC BOARD COVER SNAP-ON				
DRN. 10/3/04	CLB	MATERIAL: SEE NOTE #1		1
CR'D 01/3/04	DRL	SIZE	DWG. NO. 52007444	1 OF 1
ENGR/DESIGNER		C	52007444	
0.800				

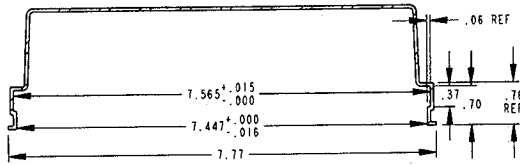
THIS DRAWING AND ALL INFORMATION PROVIDED WITH IT, IS THE PROPERTY OF THOMAS BUILT BUSES, INC. ANY REPRODUCTION OR DISTRIBUTION OF THIS DRAWING OR ANY PART THEREOF WITHOUT THE WRITTEN PERMISSION OF THOMAS BUILT BUSES, INC. IS STRICTLY PROHIBITED. CONTACT © 1997 THOMAS BUILT BUSES, INC.



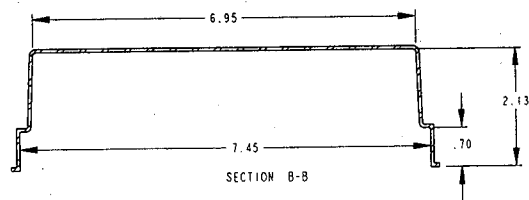
SECTION AB-AB



SECTION A-A



SECTION BA-BA



SECTION B-B

- NOTES:
- 1) MATERIAL: HI-IMPACT STYRENE, PLASTIC, .060" STARTING THICKNESS
  - 2) BLANK: N/A
  - 3) CALCULATED WEIGHT: 2.639 LBS.
  - 4) BURRS: N/A
  - 5) FINISH: SMOOTH
  - 6) COLOR: BLACK
  - 7) BENDS: N/A
  - 8) WELDS: N/A
  - 9) REFERENCE: N/A
  - 10) MODEL GEOMETRY CONTROLLED BY CAD FILE

A RELEASED					
				10/3/04 CLB M16	
				48730-1 DRL	
		REVISION		DATE BY CF	
<b>THOMAS BUILT BUSES, INC.</b>					
HIGH POINT, NC					
TOLERANCE UNLESS OTHERWISE NOTED					
THIRD ANGLE PROJECTION	DECIMAL ±	FRACTIONAL	ANGULAR		
	.125 .015	±1/32	±1°		
	.125 .01				
<b>PC BOARD COVER</b>					
<b>SNAP-ON</b>					
DRW. 10/3/04	CLB	MATERIAL: SEE NOTE #1		2*	
CK'D 10/3/04	DRL	SIZE	DWG. NO. SHEET 1 OF 1		
ENGR/DESIGNER		C	52007444		
			0.600		

THIS DRAWING AND ALL INFORMATION PROVIDED HEREON IS THE PROPERTY OF THOMAS BUILT BUSES, INC. AND REPRODUCTION OR DISTRIBUTION OF THIS MATERIAL OR ANY PART THEREOF WITHOUT PERMISSION OF THOMAS BUILT BUSES, INC. IS STRICTLY PROHIBITED. COPYRIGHT © 1997 THOMAS BUILT BUSES, INC.