

PE07-029

Attachment 28

Electric Access Panel Enclosure



ENGINEERING RELEASE NOTICE

A Subsidiary of **FREIGHTLINER**
CORPORATION

ERN#: 19685-1

ERN CLASS: Advanced
ERN AUTHOR: BOB MILLEN
REF. NUMBER: F64

RELEASED DATE: 7/25/02
CHK'D/RELEASED BY: LWH
BODY/CHASSIS INTERFACE:

PART STATUS CODE

- A Inactivate w/o Replacement
- B Manufacturing Change
- C Purchased
- D Pattern/Fixture - New/Change
- E Tooling - New/Change
- F Service
- G New Part
- H Inactivate
- I Reactivate

- J Increase Usage
- K Decrease Usage
- L Revision of Drwg, Asm, Etc...
- M Obsolete
- N Delete From Std Per Opt.
- O Prev. Adv. Released
- P Chart Change
- Q New Ref, Install, Chart, etc...
- R Reference Drwg, Asm, etc...

STOCK DISPOSITION CODES

- A Use, No Reorder
- B Rework
- C Don't Use, Dispose Of Best Way

USAGE TYPE CODES

- STD Standard
- STD-ASM Standard Assembly
- ASM-CMPT Component of assembly
- OPT-ASM Optional Assembly
- OPT Optional
- REF Reference

PLANT CODES

- 1 Main Body Assembly
- 2 Fairfield
- 5 Chassis Assembly
- 9 Minotour Assembly
- T CL100 Assembly

PART CODES

- A Running Change
- B New Option
- C CON Pending

DESCRIPTION OF/REASON FOR RELEASE

FLITE NO. 1749 - REDESIGN EXTERIOR ELECTRICAL ACCESS DOOR ER/EF AND CONVENTIONAL

Status Codes	Part Number	Description	Drawing	Rev	Usage Information				New Parts Only			
					Usage Type	Model / Opt# / Asm #	Qty / UOM	SDC	Plant Code	Shop Address	Appr. Initial	Part Code
D,E,G	54008945	SIDE SHEET,LEFT SIDE, ELECT ACCESS OPENING		A	Std	08	1 EA		1			C
D,E,G	54009015	SIDE SHEET,LEFT SIDE, ELECT ACCESS OPENING		A	Std	0Y	1 EA		1			C
D,E,G	52005375	CIRCUIT BOARD MOUNTING BRACKET		A	Std	0Y/00	1 EA		1			C
D,E,G	52005392	SUPPORT HINGE, CIRCUIT BOARD BRACKET MOUNT, LEFT		A	Std	08	1 EA		1			C
D,E,G	52005393	SUPPOR HINGE, CIRCUIT BOARD BRACKET MOUNT, RIGHT		A	Std	08	1 EA		1			C
D,E,G	52005396	SUPPORT HINGE LOCK DOWN, CIRCUIT BOARD BRACKET MOUNT, LEFT		A	Std	08	1 EA		1			C
D,E,G	52005397	SUPPORT HINGE LOCK DOWN, CIRCUIT BOARD BRACKET MOUNT, RIGHT		A	Std	08	1 EA		1			C
D,E,G	52005448	SUPPORT LOCK DOWN, CIRCUIT BOARD BRACKET MOUNT, RIGHT		A	Std	0Y/08/00	1 EA		1			C
D,E,G	52005451	SUPPORT HINGE LOCK DOWN, CIRCUIT BOARD BRACKET MOUNT, LEFT		A	Std	0Y/00	1 EA		1			C

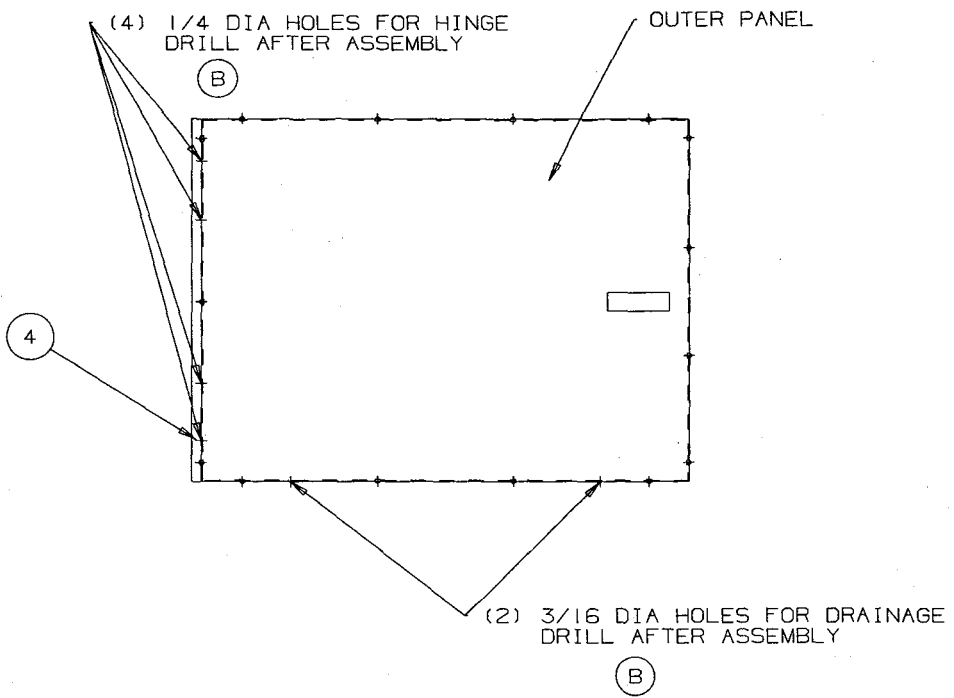
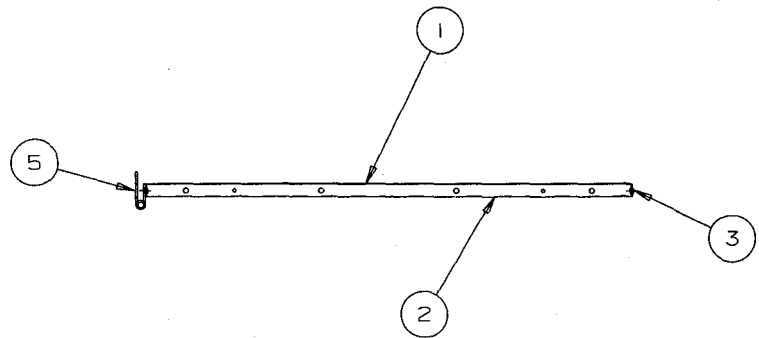
Status Codes	Part Number	Description	Drawing	Rev	Usage Information				New Parts Only			
					Usage Type	Model / Opt# / Asm #	Qty / UOM	SDC	Plant Code	Shop Address	Appr. Initial	Part Code
D,E,G	52005452	SUPPORT HINGE LOCK DOWN, CIRCUIT BOARD BRACKET MOUNT, RIGHT		A	Std	0Y/00	1 EA		1			C
D,E,G	52005453	SUPPORT LOCK DOWN, COMPONENT BRACKET MOUNT, LEFT		A	Std	0Y/00	1 EA		1			C
D,E,G	52005454	SUPPORT LOCK DOWN, COMPONENT BRACKET MOUNT, RIGHT		A	Std	0Y/00	1 EA		1			C
D,E,G	52005604	SUPPORT LOCK DOWN, CIRCUIT BOARD BRACKET MOUNT, LEFT		A	Std	0Y/08/00	1 EA		1			C
D,E,G	52005455	COMPONENT MOUNTING BRACKET		A	Std	0Y/00	1 EA		1			C
G	64008891	DOOR, ELECTRICAL PANEL ACCESS, ASSY		A	Std	0Y/08/00	1 EA		1			C
D,E,G	64008892	DOOR, ELECTRICAL PANEL ACCESS		A	Asm-Cmpt	64008891	1 EA		1			C
J	67000679	LATCH, TRIGGER, NON LOCKING		B	Asm-Cmpt	64008891	1 EA					C
G	67000692	ELECTRICAL PANEL ACCESS HINGE, ASSEMBLY		A	Asm-Cmpt	64008891	2 EA		1			C
E,G	67000693	STATIONARY LEAF,ELECTRICAL PANEL ACCESS HINGE		A	Asm-Cmpt	67000692	1 EA		1			C
E,G	67000694	WORKING LEAF, ELETRICAL PANEL ACCESS HINGE		A	Asm-Cmpt	67000692	1 EA		1			C
G	67000695	ELETRICAL PANEL ACCESS HINGE, PIN		A	Asm-Cmpt	67000692	1 EA		1			C
D,E,G	52005375	CIRCUIT BOARD MOUNTING BRACKET		A	Std	08	2 EA		1			C
Q	54009013	CHART, EXTERIOR SIDE SHEETS		A	Ref	00	1 EA		1			C
D,E,G	54009014	LEFT SIDE SHEET, FRONT, ELECT ACCESS PANEL OPENING, SMOOTH,46 X 65.75	54009013	A	Std	00	1 EA		1			C
D,E,G	54009030	SIDE SHEET, LEFT SIDE, ELECT. ACCESS OPENING, SMOOTH +10	54009013	A	Std	00	1 EA		1			C
D,E,G	54009031	SIDE SHEET, LEFT SIDE, ELECT. ACCESS OPENING, SMOOTH	54009013	A	Std	00	1 EA		1			C
D,E,G	54009032	SIDE SHEET, LEFT SIDE, ELECT. ACCESS OPENING, SMOOTH +10	54009013	A	Std	00	1 EA		1			C

APPROVAL SHEET

Checked box means signature not required.

	Signature	Comments
ENGINEERING MANAGER / TEAM LEADER	CHRIS MOORE	
ERN COORDINATOR	ROB BARKLEY	
PURCHASING	N/A	
PSU	TIM TURNER, DAVE ANGLIN	
PRODUCTION	RICKEY WRAY	
FAIRFIELD <input checked="" type="checkbox"/>		
CUSTOMER SUPPORT <input type="checkbox"/>		
RELIABILITY/DEVELOPMENT <input type="checkbox"/>		
SEATING PLAN <input type="checkbox"/>		
WEIGHT ANALYSIS <input type="checkbox"/>		
COMPLIANCE <input type="checkbox"/>		
PATTERN SHOP <input type="checkbox"/>		
FABRICATION <input type="checkbox"/>	TW, TAY, GWK	
BODY SERVICES <input type="checkbox"/>		

NOTE - For guidelines and proper usage of this approval sheet, please refer to Form E009-04.

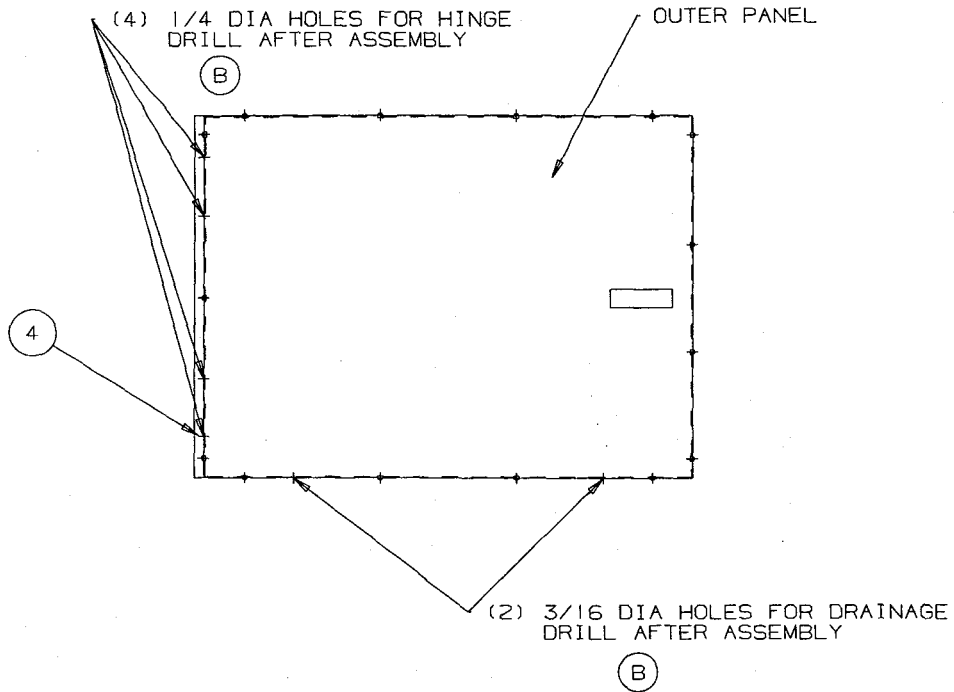
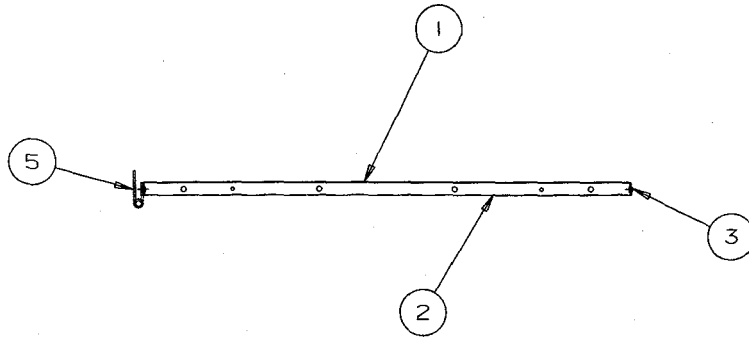


ITEM	PART NO	DESCRIPTION	QTY
1	64005305	PANEL-OUTER, ELECTRIC PANEL ACCESS DOOR, PUSHER (1990)	1
2	64005304	PANEL-INNER, ELECTRIC PANEL ACCESS DOOR, PUSHER (1990)	1
3	29001373	RIVET-POP (3/16 x 13/32)	15
4	69005007	RIVET-POP (1/4 x 1/2)	4
5	64002928	HINGE ASM	1

INACTIVE

CAD DRAWING
DO NOT
MAKE MANUAL
CHANGES

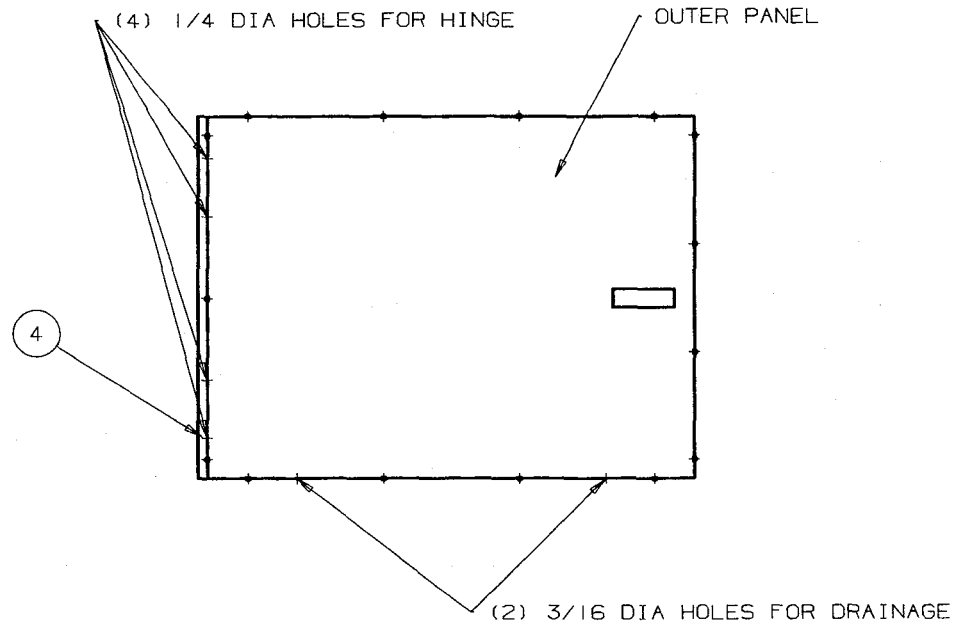
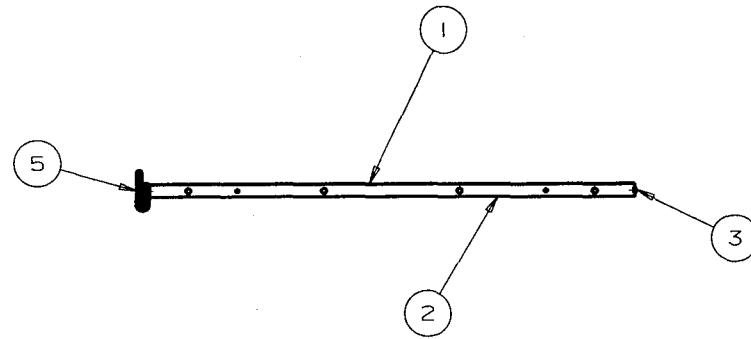
THIRD ANGLE PROJECTION 	TOLERANCE UNLESS OTHERWISE NOTED	THOMAS BUILT BUSES, INC. HIGH POINT, NC WOODSTOCK, CANADA	
DECIMAL .XXX .015 .XX .03 .X .05	FRACTIONAL ±1/32	ANGULAR ±1/2°	ELEC. ACCESS DOOR ASM
C INACTIVATED REPLACED BY 6408891 REV B ERN # UM15-539	19685-2 RCM MIG 08/01/03 TWS	DRN. 09/20/95 BY CK'D. // BY MFG. BY	MATERIAL SIZE DWG. NO.
LET REVISION	DATE BY CF	SCALE 1/8	2A 64005306



ITEM	PART NO	DESCRIPTION	QTY
1	64005305	PANEL-OUTER, ELECTRIC PANEL ACCESS DOOR, PUSHER (1990)	1
2	64005304	PANEL-INNER, ELECTRIC PANEL ACCESS DOOR, PUSHER (1990)	1
3	29001373	RIVET-POP (3/16 x 13/32)	15
4	69005007	RIVET-POP (1/4 x 1/2)	4
5	64002928	HINGE ASM	1

CAD DRAWING
DO NOT
MAKE MANUAL
CHANGES

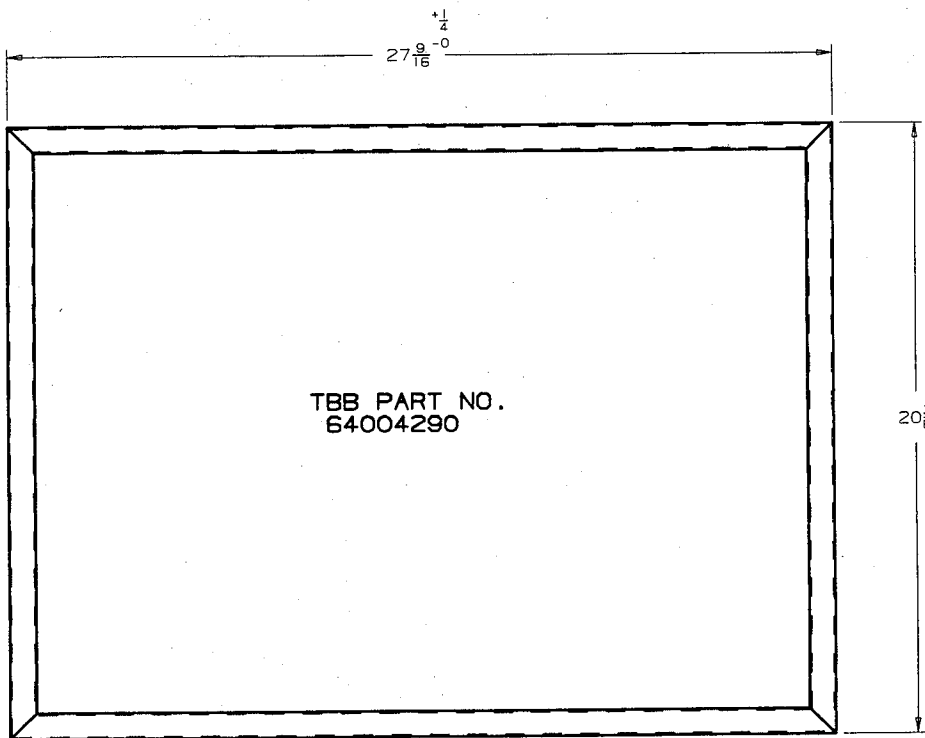
THIRD ANGLE PROJECTION		TOLERANCE UNLESS OTHERWISE NOTED			THOMAS BUILT BUSES, INC.			
		DECIMAL .XXX .015 .XX .03 .X .06	FRACTIONAL ±1/32	ANGULAR ±1/2°	HIGH POINT, NC WOODSTOCK, CANADA			
					ELEC. ACCESS DOOR ASM			
B	ADDED NOTE	UM15-539 05/21/98	TWS DKT	MTG	DRN.	09/20/95	BY DWS	MAT'L
REV A ERN # B-11631					CK'D.	BY	SIZE	DWG. NO.
LET	REVISION	DATE	BY	CF	MFG.	BY	2A	64005306
					SCALE	1/8		



ITEM	PART NO	DESCRIPTION	QTY
1	64005305	PANEL-OUTER, ELECTRIC PANEL ACCESS DOOR, PUSHER [1990]	1
2	64005304	PANEL-INNER, ELECTRIC PANEL ACCESS DOOR, PUSHER [1990]	1
3	29001373	RIVET-POP [3/16 x 13/32]	15
4	69005007	RIVET-POP [1/4 x 1/2]	4
5	64002928	HINGE ASM	1

CAD DRAWING
DO NOT
MAKE MANUAL
CHANGES

THIRD ANGLE PROJECTION		TOLERANCE UNLESS OTHERWISE NOTED			THOMAS BUILT BUSES, INC. HIGH POINT, NC WOODSTOCK, CANADA ELEC. ACCESS DOOR ASM MVP & MVPEF			
		DECIMAL .XXX .015 .XX .03 .X .06	FRACTIONAL ±1/32	ANGULAR ±1/2°				
A	RELEASED	B-11631		LH	MFG. BY	2A	64005306	
LET	REVISION	DATE	BY	CF	SCALE 1/8" = 1"			



TBB PART NO.
64004290

CELLULAR RUBBER PRODUCTS SHALL MEET OR EXCEED THE LATEST REVISION OF THE FOLLOWING APPLICABLE SPECIFICATION (S):

- A.) LATEX FOAM RUBBERS - SAE J17.
- B.) SPONGE AND EXPANDED CELLULAR RUBBER PRODUCTS - SAE J18.
- C.) CLASSIFICATION SYSTEM FOR RUBBER MATERIALS FOR AUTOMOTIVE APPLICATIONS - SAE J200.

PRODUCT DESCRIPTION : EPDM, NEOPRENE BLEND.
 DENSITY : (lb. / ft.) = 20.
 COLOR : BLACK.
 SKIN : SMOOTH CONTINUOUS.

FINISHED PRODUCT SHALL MEET OR EXCEED PREVAILING MANUFACTURING WORKMANSHIP STANDARDS. MANUFACTURER SHALL MAINTAIN DOCUMENTATION, LOT CONTROL, AND CERTIFICATION OF THE FINISHED PRODUCT. SUCH DOCUMENTATION SHALL BE PROVIDED IN ACCORDANCE WITH RUBBER MANUFACTURERS ASSOCIATION HANDBOOK, CERTIFICATION CLASS X7.

NOTE:
1. EACH GASKET MUST BE INDIVIDUALLY IDENTIFIED WITH THE NOTED TBB PART NO.

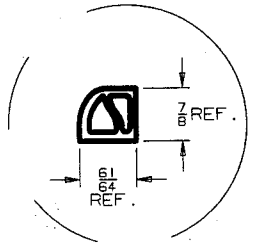
AIR RELIEF HOLES LOCATED IN INNER SURFACE OF SEAL SPACED 6" TO 10" APART THRU INNER WALL ONLY.

UNLESS OTHERWISE NOTED, OVERALL HEIGHT AND WIDTH CUT TOLERANCE ± .19.

SEE DETAIL A

INACTIVE

MOLDED 90° CORNERS, TYP.



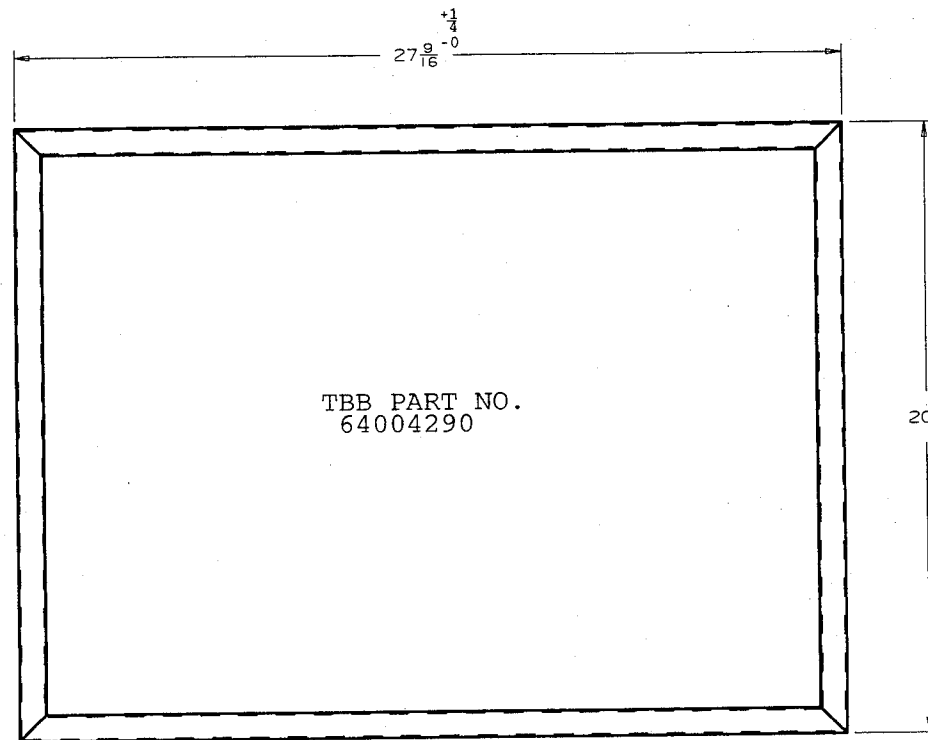
DETAIL "A"
2:1

B	INACTIVATED REV A ERN * B-9401	19685-2 08/01/03	RCM TWS	MTG
LET	REVISION	DATE	BY	CF
THOMAS BUILT BUSES, INC. HIGH POINT, NC WOODSTOCK, CANADA				
THIRD ANGLE PROJECTION		TOLERANCE UNLESS OTHERWISE NOTED		
		DECIMAL .XXX .015 .XX .03 .X .06	FRACTIONAL ±1/32	ANGULAR ±1/2°
GASKET, WEBBED - ELECTRICAL PANEL ACCESS DOOR, E.R.				
DFN.	04/05/93	BY	MAT'L	
CK'D.	04/05/93	BY	SIZE	DWG. NO.
WFR.		BY	B	64004290
SCALE 1/4				

* EACH SHIPMENT OF THE GASKETS DESCRIBED ON THIS DRAWING MUST BE CERTIFIED TO T.B.B. ENGINEERING TO COMPLY WITH THE NOTED MATERIAL DESCRIPTION.

* ANY DEVIATION FROM PRINT MUST HAVE PRIOR WRITTEN CONSENT FROM THOMAS BUILT BUSES, INC., ENGINEERING DEPARTMENT.

CAD DRAWING
DO NOT
MAKE MANUAL
CHANGES



TBB PART NO.
64004290

CELLULAR RUBBER PRODUCTS SHALL MEET OR EXCEED THE LATEST REVISION OF THE FOLLOWING APPLICABLE SPECIFICATION [S]:

- A.] LATEX FOAM RUBBERS - SAE J17.
- B.] SPONGE AND EXPANDED CELLULAR RUBBER PRODUCTS - SAE J18
- C.] CLASSIFICATION SYSTEM FOR RUBBER MATERIALS FOR AUTOMOTIVE APPLICATIONS - SAE J200.

PRODUCT DESCRIPTION : EPDM, NEOPRENE BLEND.
 DENSITY : [lb. / ft.] = 20.
 COLOR : BLACK.
 SKIN : SMOOTH CONTINUOUS.

FINISHED PRODUCT SHALL MEET OR EXCEED PREVAILING MANUFACTURING WORKMANSHIP STANDARDS. MANUFACTURER SHALL MAINTAIN DOCUMENTATION, LOT CONTROL, AND CERTIFICATION OF THE FINISHED PRODUCT. SUCH DOCUMENTATION SHALL BE PROVIDED IN ACCORDANCE WITH RUBBER MANUFACTURERS ASSOCIATION HANDBOOK, CERTIFICATION CLASS X7.

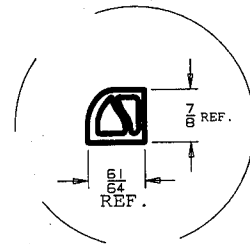
NOTE:
1. EACH GASKET MUST BE INDIVIDUALLY IDENTIFIED WITH THE NOTED TBB PART NO.

AIR RELIEF HOLES LOCATED IN INNER SURFACE OF SEAL SPACED 6" TO 10" APART THRU INNER WALL ONLY.

UNLESS OTHERWISE NOTED, OVERALL HEIGHT AND WIDTH CUT TOLERANCE ± .19.

SEE DETAIL A

MOLDED 90° CORNERS, TYP.



DETAIL "A"
2:1

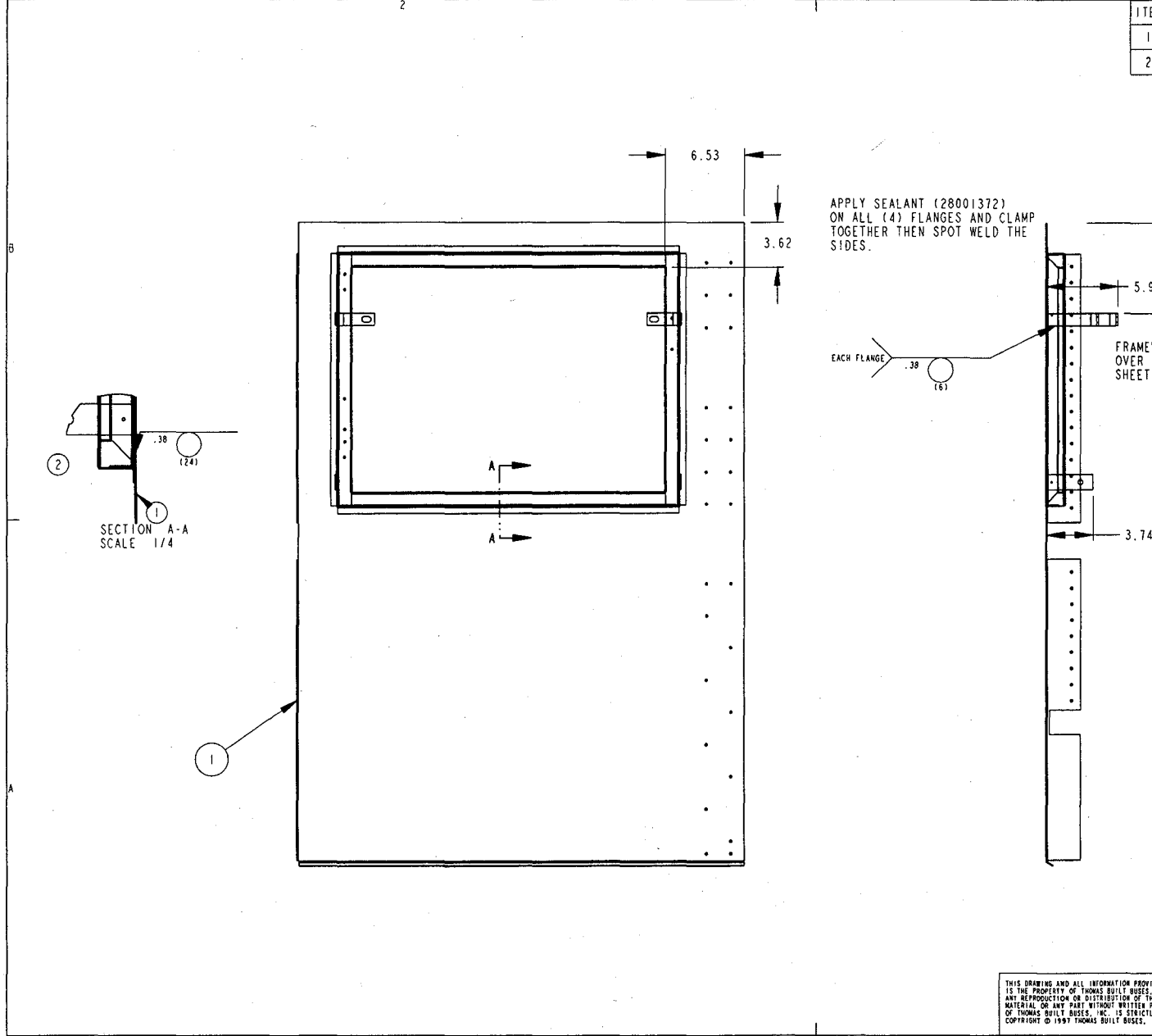
* EACH SHIPMENT OF THE GASKETS DESCRIBED ON THIS DRAWING MUST BE CERTIFIED TO P. B. B. ENGINEERING TO COMPLY WITH THE NOTED MATERIAL DESCRIPTION. *

* ANY DEVIATION FROM PRINT MUST HAVE PRIOR WRITTEN CONSENT FROM THOMAS BUILT BUSES, INC., ENGINEERING DEPARTMENT *

A	RELEASED	B-9401	PTL	JP
		4-16-93	BRR	
LET	REVISION	DATE	BY	CF
THOMAS BUILT BUSES, INC. HIGH POINT, NC WOODSTOCK, CANADA				
THIRD ANGLE PROJECTION		TOLERANCE UNLESS OTHERWISE NOTED		
		DECIMAL .XXX .015 .XX .03 .X .06	FRACTIONAL ±1/32	ANGULAR ±1/2°
GASKET, WEBBED - ELECTRICAL PANEL ACCESS DOOR, E.R.				
DRN.	4/5/93	BY	PTL	MAT'L
CK'D.	4/5/93	BY	BRR	DWG. NO.
MFG.		BY	B	64004290
SCALE 1/4				

CAD DRAWING
DO NOT
MAKE MANUAL
CHANGES

ITEM	QUANTITY	PART NUMBER	DESCRIPTION
1	1	54002218	SIDE SHEET, LEFT SIDE,
2	1	54009023	FRAME-OUTER, ASM., ELECT.



- NOTES:
- 1) MATERIAL: SEE DETAIL DWGS.
 - 2) BLANK: N/A
 - 3) CALCULATED WEIGHT: 31.98 LBS
 - 4) BURRS: N/A
 - 5) FINISH: PRIME
 - 6) COLOR: BLACK/GREY
 - 7) BENDS: N/A
 - 8) WELDS: N/A
 - 9) REFERENCE: N/A

INACTIVE
 See title block for details

B	INACTIVED REPLACED BY 54009080 *** REV A. ERN B18892-2***		
		7-19-02	RCB MIG
		24498-1	CAM
LET	REVISION	DATE	BY

THOMAS BUILT BUSES, INC.
HIGH POINT, NC WOODSTOCK, CANADA

THIRD ANGLE PROJECTION	TOLERANCE UNLESS OTHERWISE NOTED		
	DECIMAL	FRACTIONAL	ANGULAR
	.XX .019 XX .06 XX .1	±1/32	±1°

**SHEET-SIDE, L.S. FRT. END,
ASM., ELECT ACCESS FRAME
CIRCUIT BOARD MTG. BRKT.**

THIS DRAWING AND ALL INFORMATION PROVIDED WITH IT,
IS THE PROPERTY OF THOMAS BUILT BUSES, INC.
ANY REPRODUCTION OR DISTRIBUTION OF THIS
MATERIAL OR ANY PART WITHOUT WRITTEN PERMISSION
OF THOMAS BUILT BUSES, INC. IS STRICTLY PROHIBITED.
COPYRIGHT © 1997 THOMAS BUILT BUSES, INC.

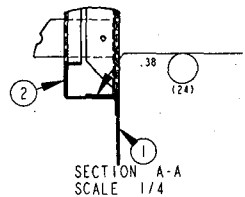
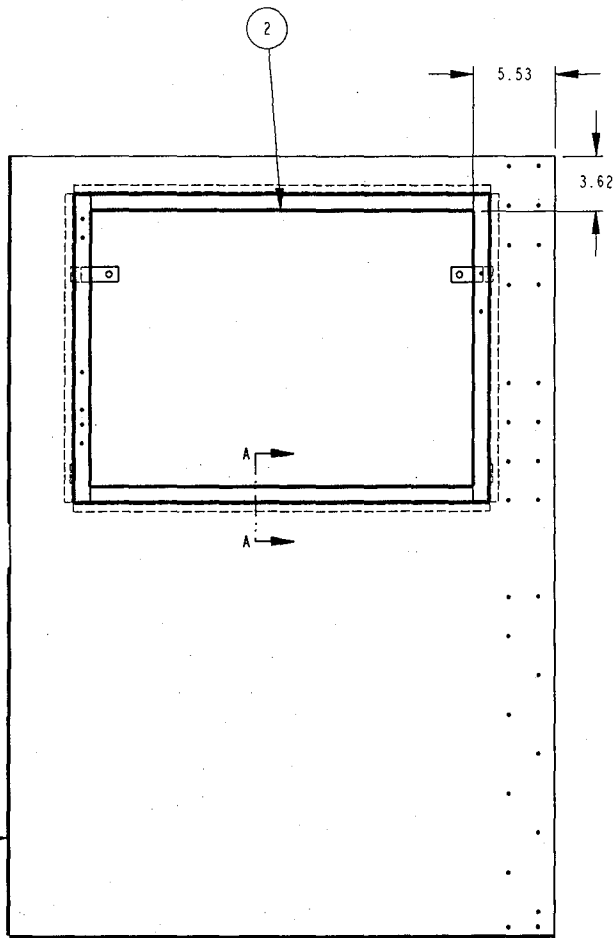
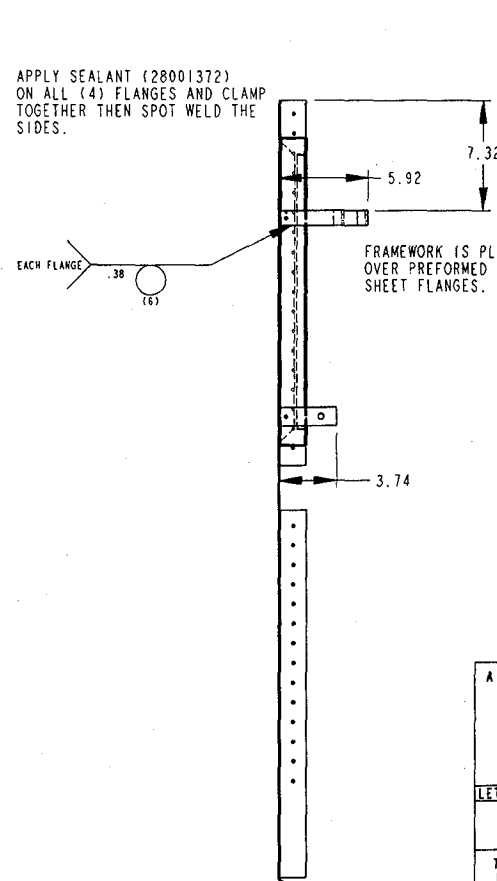
DRN.	JSW	MATERIAL: SEE NOTE #1	PRO-E
CK'D.	CAM	SIZE	DWG. NO. SHEET 1 OF 1
ENGR/DESIGNER	JSW	B	54002217
1/8			

ITEM	QUANTITY	PART NUMBER	DESCRIPTION
1	1	54002218	SIDE SHEET, LS
2	1	54002224	FRAME-OUTER, ASM., ELECT.

APPLY SEALANT (28001372)
ON ALL (4) FLANGES AND CLAMP
TOGETHER THEN SPOT WELD THE
SIDES.

FRAMEWORK IS PLACED
OVER PREFORMED VESTIBULE
SHEET FLANGES.

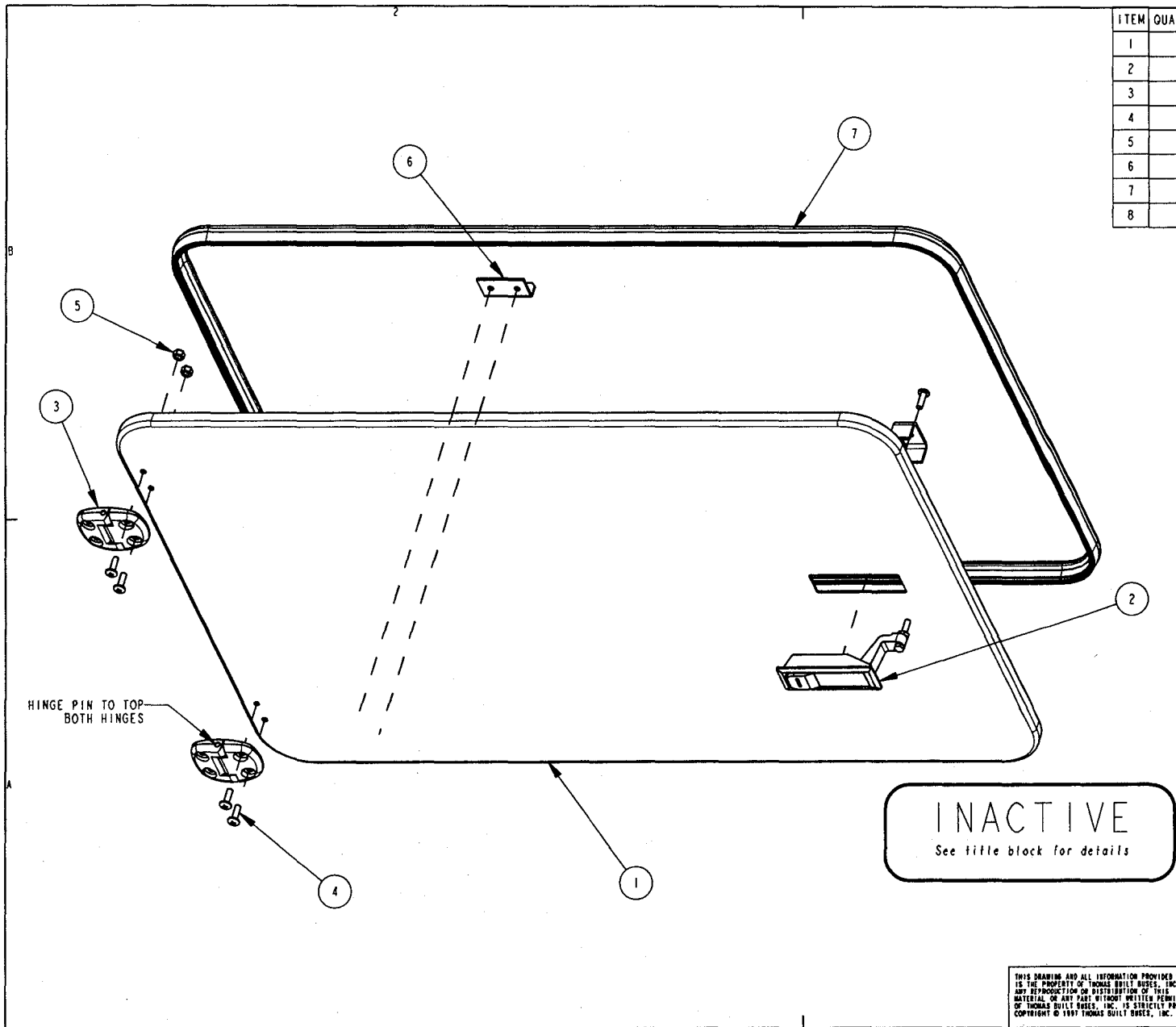
- NOTES:
- 1) MATERIAL: SEE DETAIL DWGS.
 - 2) BLANK: N/A
 - 3) CALCULATED WEIGHT: 31.98 LBS
 - 4) BURRS: N/A
 - 5) FINISH: PRIME
 - 6) COLOR: BLACK/GREY
 - 7) BENDS: N/A
 - 8) WELDS: N/A
 - 9) REFERENCE: N/A



A		RELEASED					
				2/29/00	JSW	MIG	
				818892-2	CAM		
LET	REVISION	DATE	BY	CF			
THOMAS BUILT BUSES, INC.							
HIGH POINT, NC				WOODSTOCK, CANADA			
TOLERANCE UNLESS OTHERWISE NOTED							
THIRD ANGLE PROJECTION	DECIMAL	.XX .015	FRACTIONAL	±1/32	ANGULAR	±1°	
		.XX .03					
		.X .06					
SHEET-SIDE, L.S. FRT. END, ASM., ELECT ACCESS FRAME CIRCUIT BOARD MTG. BRKT.							
DRN.	JSW	MATERIAL: SEE NOTE #1				PROE	
CK'D.	CAM	SIZE	DWG. NO. SHEET 1 OF 1				
ENGR/DESIGNER	JSW	B	54002217				
1/8							

THIS DRAWING AND ALL INFORMATION PROVIDED WITH IT,
IS THE PROPERTY OF THOMAS BUILT BUSES, INC.
ANY REPRODUCTION OR DISTRIBUTION OF THIS
MATERIAL OR ANY PART WITHOUT WRITER PERMISSION
OF THOMAS BUILT BUSES, INC. IS STRICTLY PROHIBITED.
COPYRIGHT © 1997 THOMAS BUILT BUSES, INC.

ITEM	QUANTITY	PART NUMBER	DESCRIPTION
1	1	64008892	DOOR
2	1	67000700	TRIGGER LATCH
3	2	67000692	ELECTRICAL PANEL ACCESS HINGE
4	4	69002283	MACHINE SCREW, STAINLESS, TRUSS
5	4	61370767	LOCKNUT, #10-24, ZINC COATING
6	1	67000746	DOOR STOP LANYARD MOUNTING BRACKET
7	1	65010912	GASKET
8	1	67000553	STRUCTURAL ADHESIVE,



NOTES:
 1) MATERIAL: SEE DETAIL DWGS
 2) BLANK: N/A
 3) CALCULATED WEIGHT: 13.475
 4) BURRS: N/A
 5) FINISH: N/A
 6) COLOR: SEE DETAIL DWGS
 7) BENDS: N/A
 8) WELDS: N/A
 9) REFERENCE: N/A

F	INACTIVATE, REPLACED BY 64009872				
	****REV E, ERN 19685-15****	27 Jun 03	JAI	MIG	
		39171-1	DRT		
LET	REVISION	DATE	BY	CF	

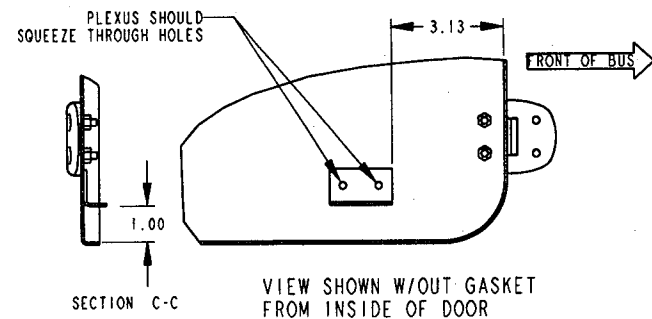
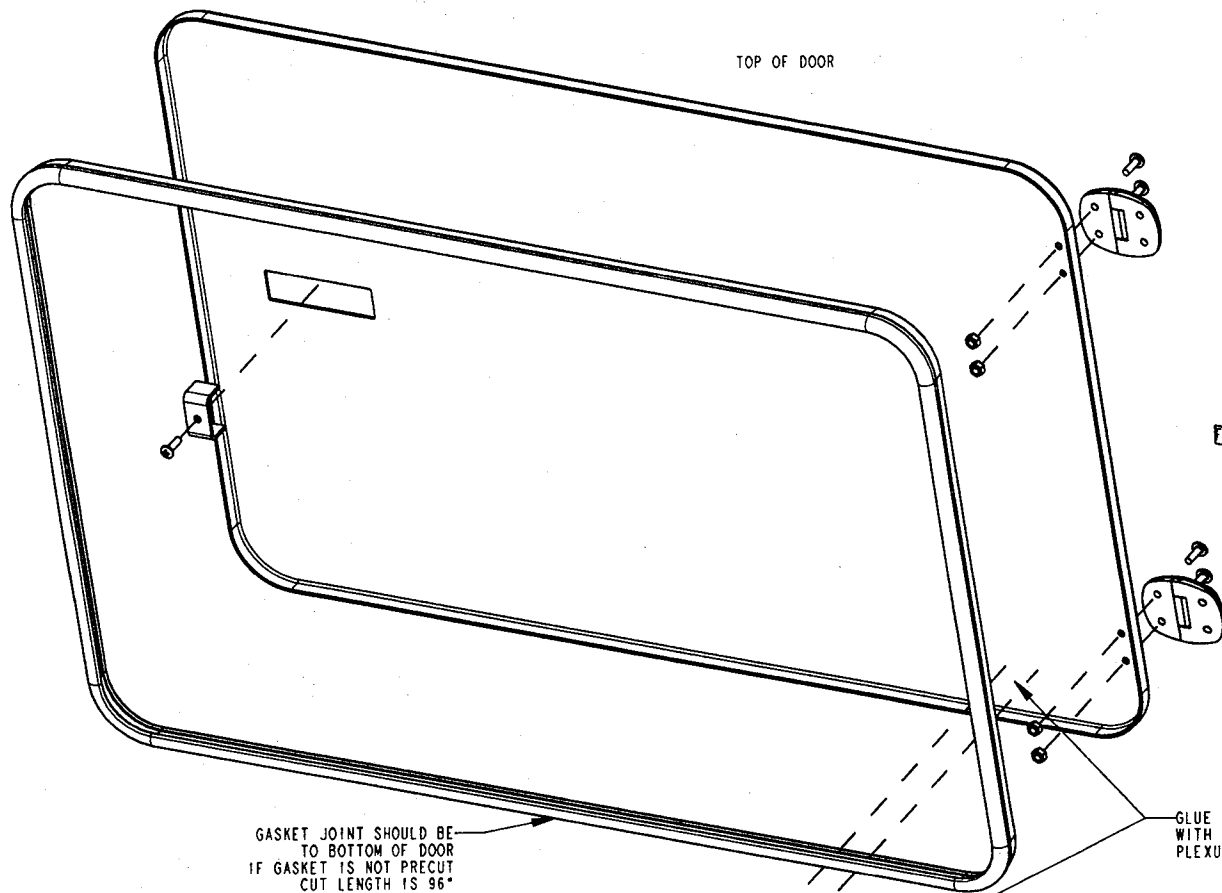
THOMAS BUILT BUSES, INC.
 HIGH POINT, NC WOODSTOCK, CANADA

THIRD ANGLE PROJECTION	TOLERANCE UNLESS OTHERWISE NOTED		
	DECIMAL	FRACTIONAL	ANGULAR
	.XXX .015 .XX .06 .X .1	±1/32	±1°

DOOR ELECTRICAL PANEL ACCESS ASSY

DRN. 1/29/02	RCM	MATERIAL: SEE NOTE #1	0
CK'D.	CAM	SIZE	DWG. NO. 0001 1 OF 2
ENGR/DESIGNER	RCM	B	64008891
			0.100

THIS DRAWING AND ALL INFORMATION PROVIDED WITH IT, IS THE PROPERTY OF THOMAS BUILT BUSES, INC. ANY REPRODUCTION OR DISTRIBUTION OF THIS MATERIAL OR ANY PART WITHOUT WRITTEN PERMISSION OF THOMAS BUILT BUSES, INC. IS STRICTLY PROHIBITED. COPYRIGHT © 1997 THOMAS BUILT BUSES, INC.

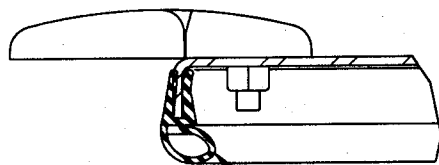


FRONT OF BUS

INACTIVE
See title block for details

GASKET JOINT SHOULD BE TO BOTTOM OF DOOR IF GASKET IS NOT PRECUT CUT LENGTH IS 96"

GLUE TO DOOR WITH P/N 67000553 PLEXUS 420



DETAIL B
SCALE 1.000

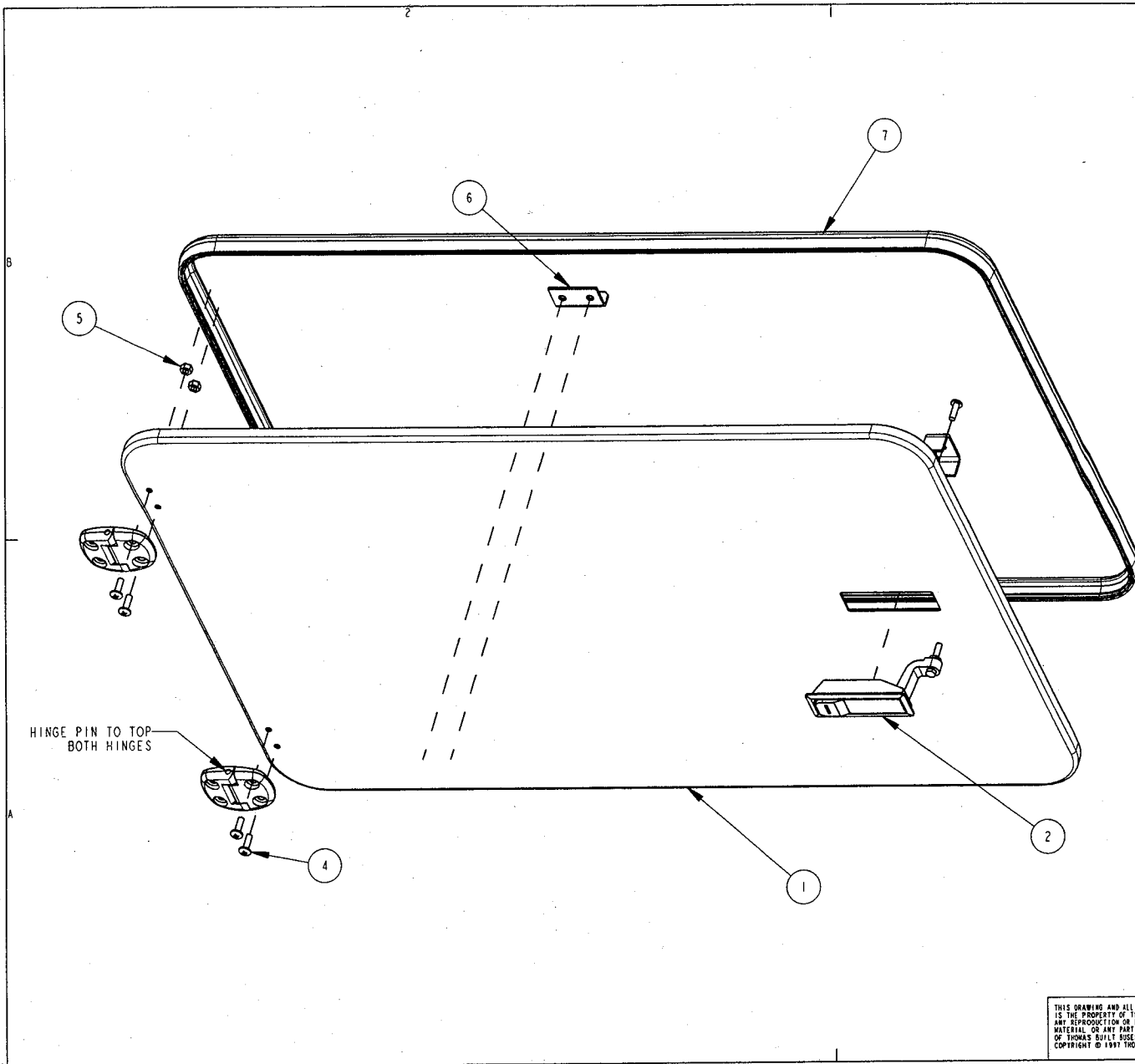
POSITION GASKET SO TEARDROP SHAPE POINTS TOWARD CENTER OF DOOR



ISO VIEW, INSIDE OF DOOR

F		INACTIVATE, REPLACED BY 64009872			
		****REV E, ERN 19685-15****		27 Jun 03	JAI MIG
LET		REVISION		39171-1	DKT
		THOMAS BUILT BUSES, INC.		DATE	BY CF
		HIGH POINT, NC		WOODSTOCK, CANADA	
TOLERANCE UNLESS OTHERWISE NOTED					
THIRD ANGLE PROJECTION	DECIMAL	FRACTIONAL	ANGULAR		
	.XXX .015	±1/32	±1°		
	.XX .06				
	.X .1				
DOOR ELECTRICAL PANEL ACCESS ASSY					
DRN. 1/29/02	RCM	MATERIAL: SEE NOTE #1		2	
CK'D.	CAM	SIZE	DWG. NO. SHEET 2 OF 2		
ENGR/DESIGNER	RCM	B	64008891		
0.300					

THIS DRAWING AND ALL INFORMATION PROVIDED WITH IT, IS THE PROPERTY OF THOMAS BUILT BUSES, INC. ANY REPRODUCTION OR DISTRIBUTION OF THIS MATERIAL OR ANY PART THEREOF WITHOUT WRITTEN PERMISSION OF THOMAS BUILT BUSES, INC. IS STRICTLY PROHIBITED. COPYRIGHT © 1997 THOMAS BUILT BUSES, INC.

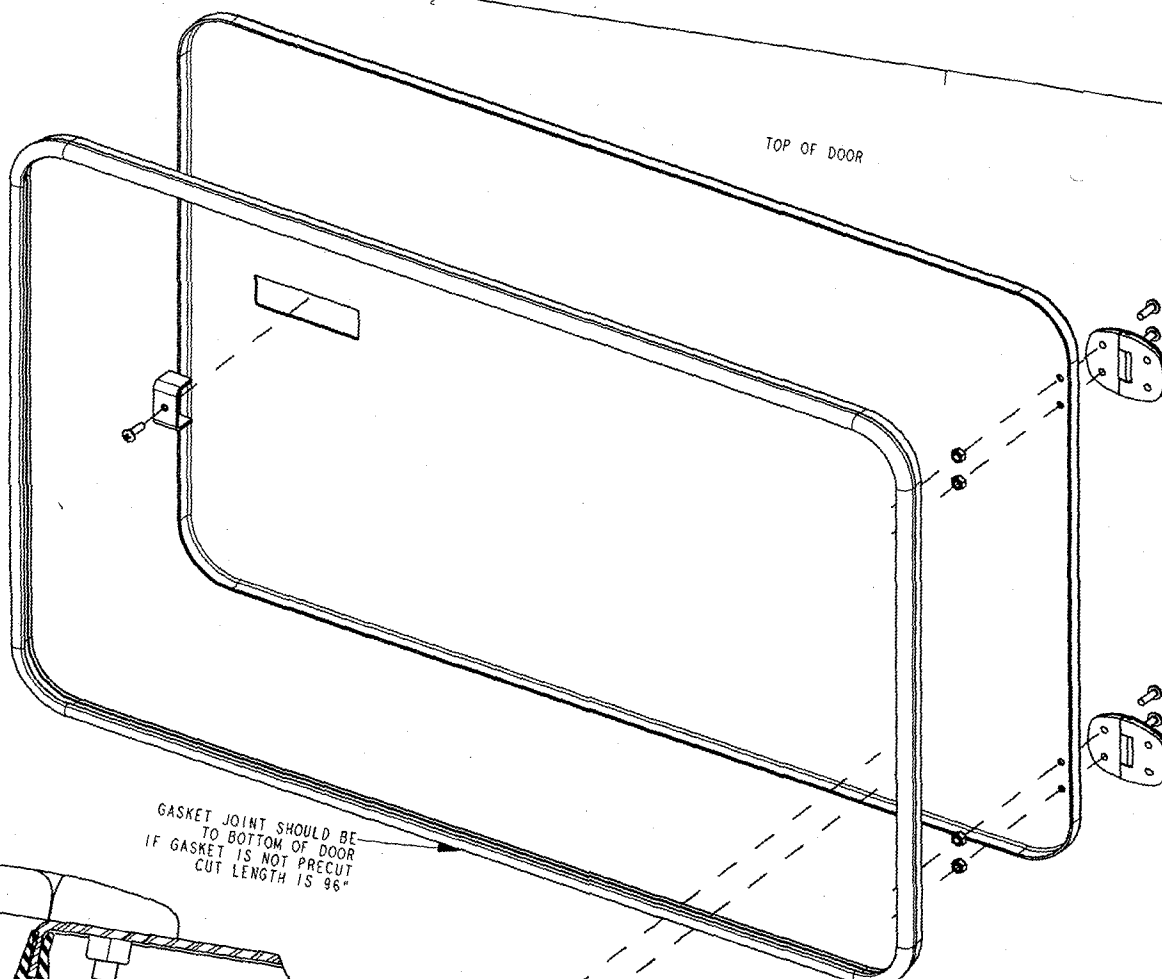


ITEM	QUANTITY	PART NUMBER	DESCRIPTION
1	1	64008892	DOOR
2	1	67000700	TRIGGER LATCH
3	2	67000692	ELECTRICAL PANEL ACCESS HINGE
4	4	69002280	MACHINE SCREW CHART, TRUSS HEAD,
5	4	61370767	LOCKNUT, #10-24, ZINC COATING
6	1	67000746	DOOR STOP LANYARD MOUNTING BRACKET
7	1	65010912	GASKET
8	1	67000553	STRUCTURAL ADHESIVE,

- NOTES:
 1) MATERIAL: SEE DETAIL DWGS
 2) BLANK: N/A
 3) CALCULATED WEIGHT: 13.755
 4) BURRS: N/A
 5) FINISH: N/A
 6) COLOR: SEE DETAIL DWGS
 7) BENDS: N/A
 8) WELDS: N/A
 9) REFERENCE: N/A

E		1) REVISED VIEW 2) ADD P/N 67000746 REV D ERM 19685-10					
				3/14/03	RCM	MIG	
				19685-15	CAM		
LET	REVISION	DATE	BY	CF			
THOMAS BUILT BUSES, INC.							
HIGH POINT, NC				WOODSTOCK, CANADA			
TOLERANCE UNLESS OTHERWISE NOTED							
THIRD ANGLE PROJECTION	DECIMAL	FRACTIONAL	ANGULAR				
	.XXX .015	±1/32	±1°				
	.XX .06						
	.X .1						
DOOR ELECTRICAL PANEL ACCESS ASSY							
DRN. 1/29/02	RCM	MATERIAL: SEE NOTE #1					
CK'D.	CAM	SIZE	DWG. NO. SHEET 1 OF 2				
ENGR/DESIGNER	RCM	B	64008891				
0.300							

THIS DRAWING AND ALL INFORMATION PROVIDED WITH IT, IS THE PROPERTY OF THOMAS BUILT BUSES, INC. ANY REPRODUCTION OR DISTRIBUTION OF THIS MATERIAL OR ANY PART WITHOUT WRITTEN PERMISSION OF THOMAS BUILT BUSES, INC. IS STRICTLY PROHIBITED. COPYRIGHT © 1997 THOMAS BUILT BUSES, INC.



TOP OF DOOR

ISO VIEW, INSIDE OF DOOR

GASKET JOINT SHOULD BE TO BOTTOM OF DOOR IF GASKET IS NOT PRECUT CUT LENGTH IS 96"

GLUE TO DOOR WITH P/N 67000553 PLEXUS 420

PLEXUS SHOULD SQUEEZE THROUGH HOLES

SECTION C-C

VIEW SHOWN W/OUT GASKET FROM INSIDE OF DOOR

(E1)

FRONT OF BUS

FRONT OF BUS

5.13

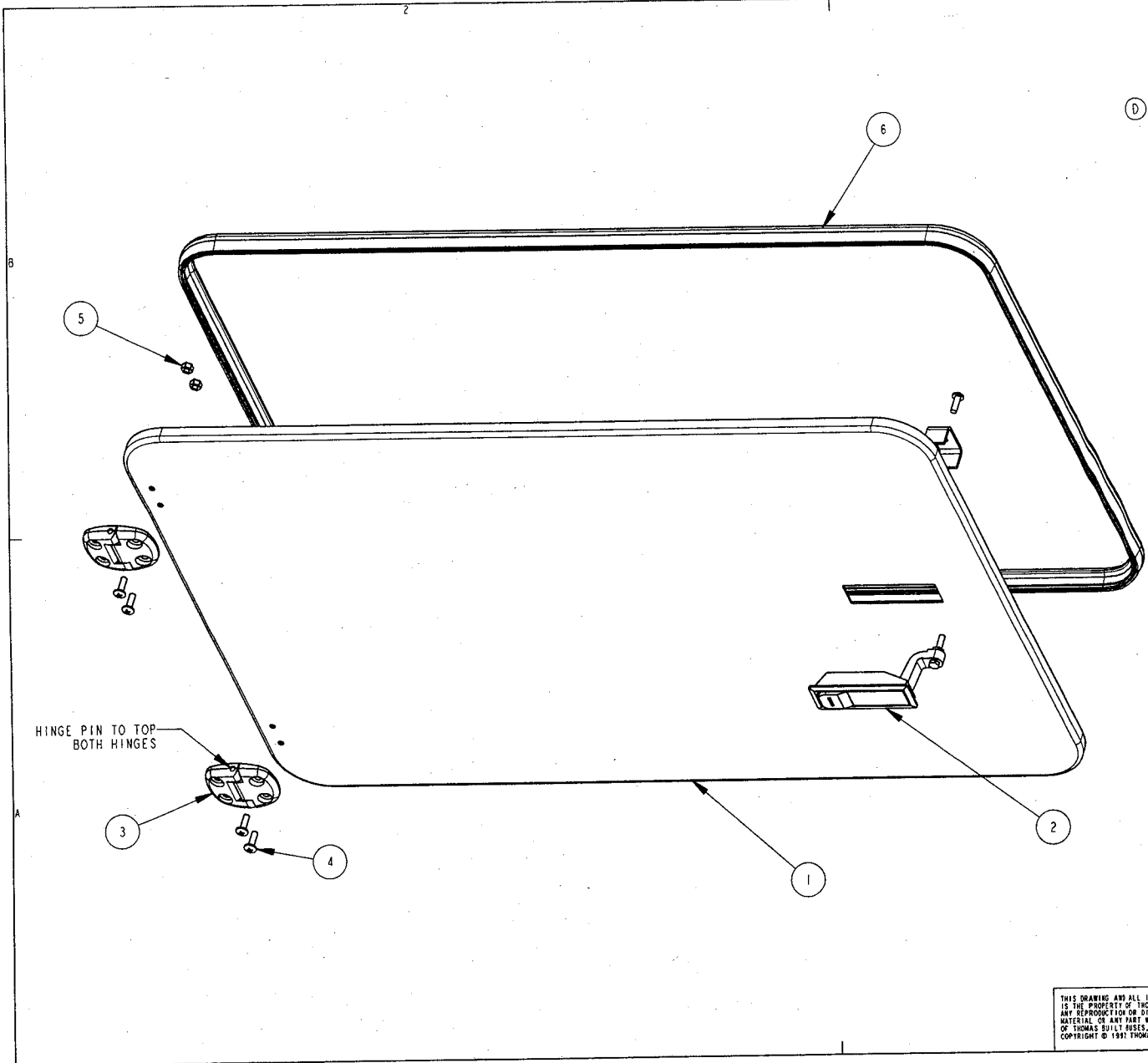
1.00

B 1.000

POSITION GASKET SO TEARDROP SHAPE POINTS TOWARD CENTER OF DOOR

E 1) REVISED VIEW 2) ADD P/N 67000746 REV D ERN 1985-10		3/14/03	RCM	MTG
LET	REVISION	DATE	BY	CF
THOMAS BUILT BUSES, INC.		1985-15	CAN	
HIGH POINT, NC				
WOODSTOCK, CANADA				
THIRD ANGLE PROJECTION		TOLERANCE UNLESS OTHERWISE SPECIFIED		
DECIMAL				

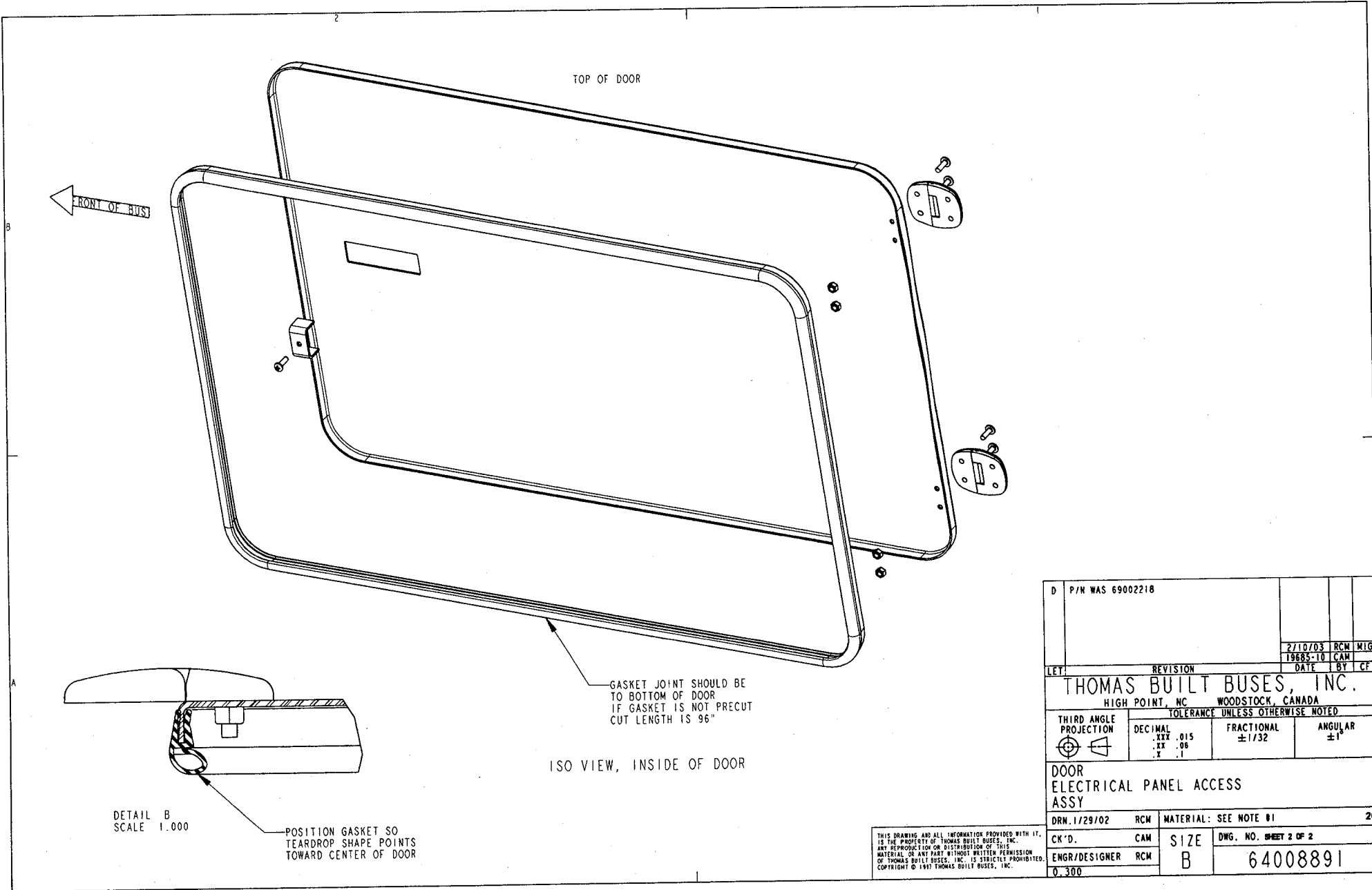
ITEM	QUANTITY	PART NUMBER	DESCRIPTION
1	1	64008892	DOOR
2	1	67000700	TRIGGER LATCH
3	2	67000692	ELECTRICAL PANEL ACCESS HINGE
4	4	69002280	MACHINE SCREW CHART, TRUSS HEAD,
5	4	61370767	LOCKNUT, #10-24, ZINC COATING
6	1	65010912	GASKET



- NOTES:
 1) MATERIAL: SEE DETAIL DWGS
 2) BLANK: N/A
 3) CALCULATED WEIGHT: 13.193
 4) BURRS: N/A
 5) FINISH: N/A
 6) COLOR: SEE DETAIL DWGS
 7) BENDS: N/A
 8) WELDS: N/A
 9) REFERENCE: N/A

D P/N WAS 69002218		27/10/03	RCM	MTG
		19685-10	CAM	
LEFT	REVISION	DATE	BY	CF
THOMAS BUILT BUSES, INC.				
HIGH POINT, NC		WOODSTOCK, CANADA		
TOLERANCE UNLESS OTHERWISE NOTED				
THIRD ANGLE PROJECTION	DECIMAL .XXX .015 .XX .06 .X .1	FRACTIONAL ±1/32	ANGULAR ±1°	
DOOR ELECTRICAL PANEL ACCESS ASSY				
DRW. 11/29/02	RCM	MATERIAL: SEE NOTE #1		21
CK'D.	CAM	SIZE	DWG. NO. SHEET 1 OF 2	
ENGR/DESIGNER	RCM	B	64008891	
0.300				

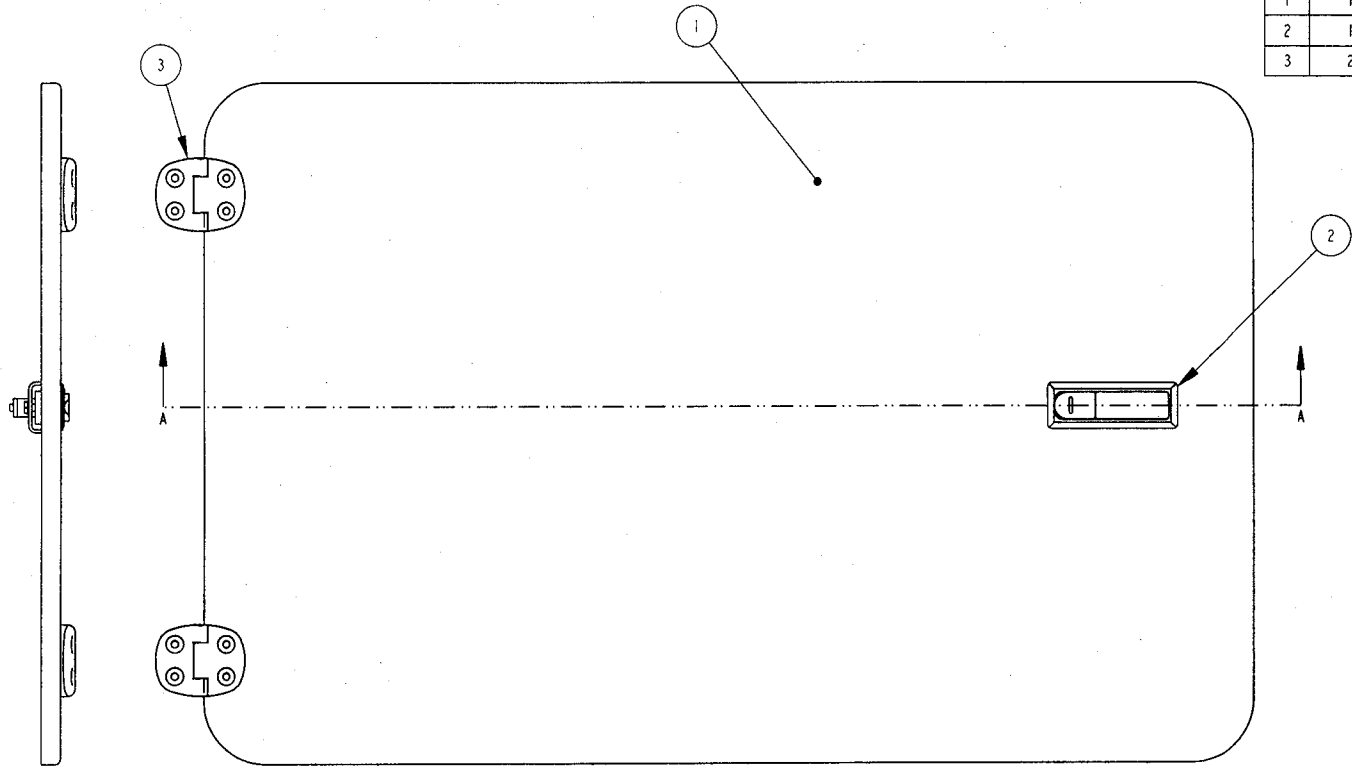
THIS DRAWING AND ALL INFORMATION PROVIDED WITH IT, IS THE PROPERTY OF THOMAS BUILT BUSES, INC. ANY REPRODUCTION OR DISTRIBUTION OF THIS MATERIAL OR ANY PART WITHOUT WRITTEN PERMISSION OF THOMAS BUILT BUSES, INC. IS STRICTLY PROHIBITED. COPYRIGHT © 1997 THOMAS BUILT BUSES, INC.



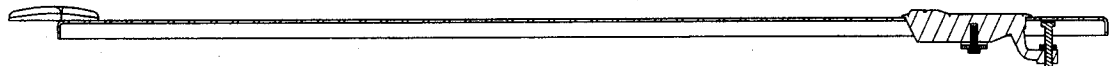
D P/N WAS 69002218		2/10/03 RCM MTG	
		19685-10 CAM	
LET	REVISION	DATE	BY
THOMAS BUILT BUSES, INC.			
HIGH POINT, NC		WOODSTOCK, CANADA	
TOLERANCE UNLESS OTHERWISE NOTED			
THIRD ANGLE PROJECTION	DECIMAL	FRACTIONAL	ANGULAR
	.xxx .015	±1/32	±1°
	.xx .06		
	.x .1		
DOOR ELECTRICAL PANEL ACCESS ASSY			
DRN. 1/29/02	RCM	MATERIAL: SEE NOTE #1	
CK'D.	CAM	SIZE	DWG. NO. SHEET 2 OF 2
ENGR/DESIGNER	RCM	B	64008891
0.300			

THIS DRAWING AND ALL INFORMATION PROVIDED WITH IT, IS THE PROPERTY OF THOMAS BUILT BUSES, INC. ANY REPRODUCTION OR DISTRIBUTION OF THIS MATERIAL OR ANY PART WITHOUT WRITTEN PERMISSION OF THOMAS BUILT BUSES, INC. IS STRICTLY PROHIBITED. COPYRIGHT © 1997 THOMAS BUILT BUSES, INC.

ITEM	QUANTITY	PART NUMBER	DESCRIPTION
1	1	64008892	DOOR
2	1	67000661	TRIGGER LATCH.
3	2	67000692	ELECTRICAL PANEL ACCESS HINGE



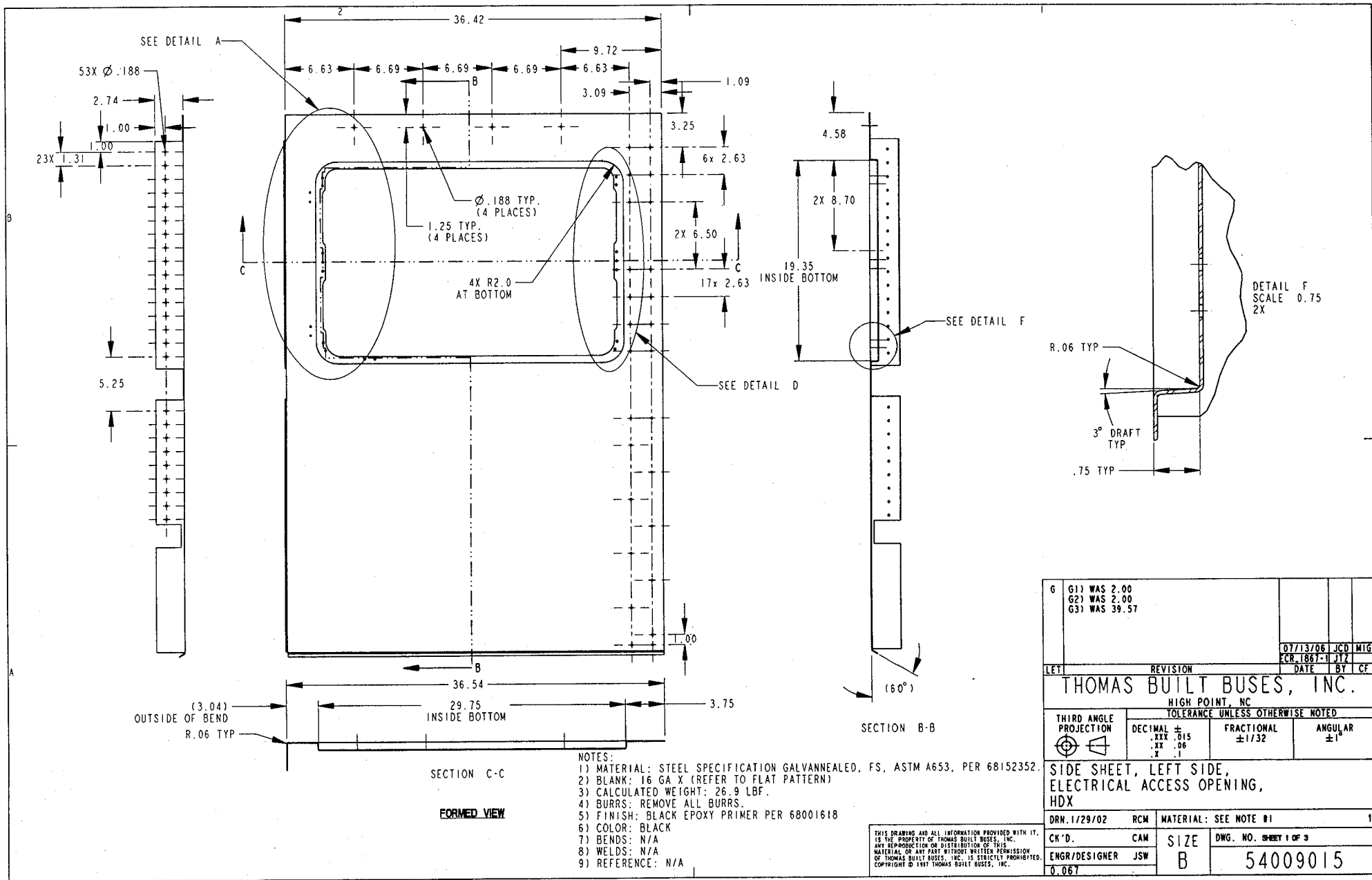
- NOTES:
- 1) MATERIAL: SEE DETAIL DWGS
 - 2) BLANK: N/A
 - 3) CALCULATED WEIGHT: 13.205
 - 4) BURRS: N/A
 - 5) FINISH: N/A
 - 6) COLOR: SEE DETAIL DWGS
 - 7) BENDS: N/A
 - 8) WELDS: N/A
 - 9) REFERENCE: N/A



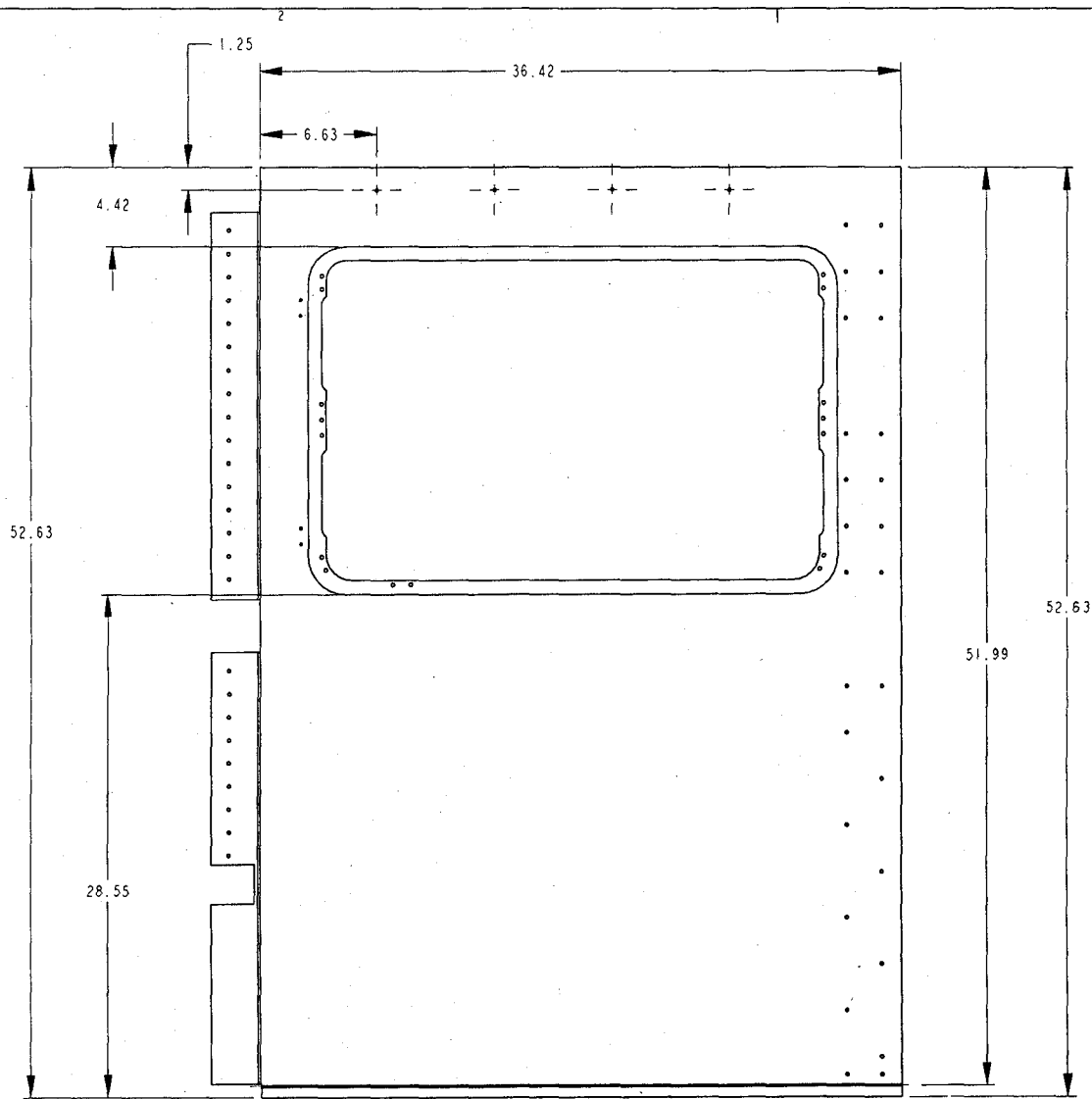
SECTION A-A

A	RELEASED				
		1/29/02	RCM	MIG	
		19685-1	CAM		
LET	REVISION	DATE	BT	CF	
THOMAS BUILT BUSES, INC.					
HIGH POINT, NC WOODSTOCK, CANADA					
TOLERANCE UNLESS OTHERWISE NOTED					
THIRD ANGLE PROJECTION	DECIMAL	FRACTIONAL	ANGULAR		
	.XXX .015	±1/32	±1°		
	.XX .06				
	.X .1				
DOOR ELECTRICAL PANEL ACCESS ASSY					
DRN. 1/29/02	RCM	MATERIAL: SEE NOTE #1			PRO-E
CK'D.	CAM	SIZE	DWG. NO. SHEET 1 OF 1		
ENGR/DESIGNER	RCM	B	64008891		
0.300					

THIS DRAWING AND ALL INFORMATION PROVIDED WITH IT, IS THE PROPERTY OF THOMAS BUILT BUSES, INC. ANY REPRODUCTION OR DISTRIBUTION OF THIS MATERIAL OR ANY PART WITHOUT WRITTEN PERMISSION OF THOMAS BUILT BUSES, INC. IS STRICTLY PROHIBITED. COPYRIGHT © 1997 THOMAS BUILT BUSES, INC.



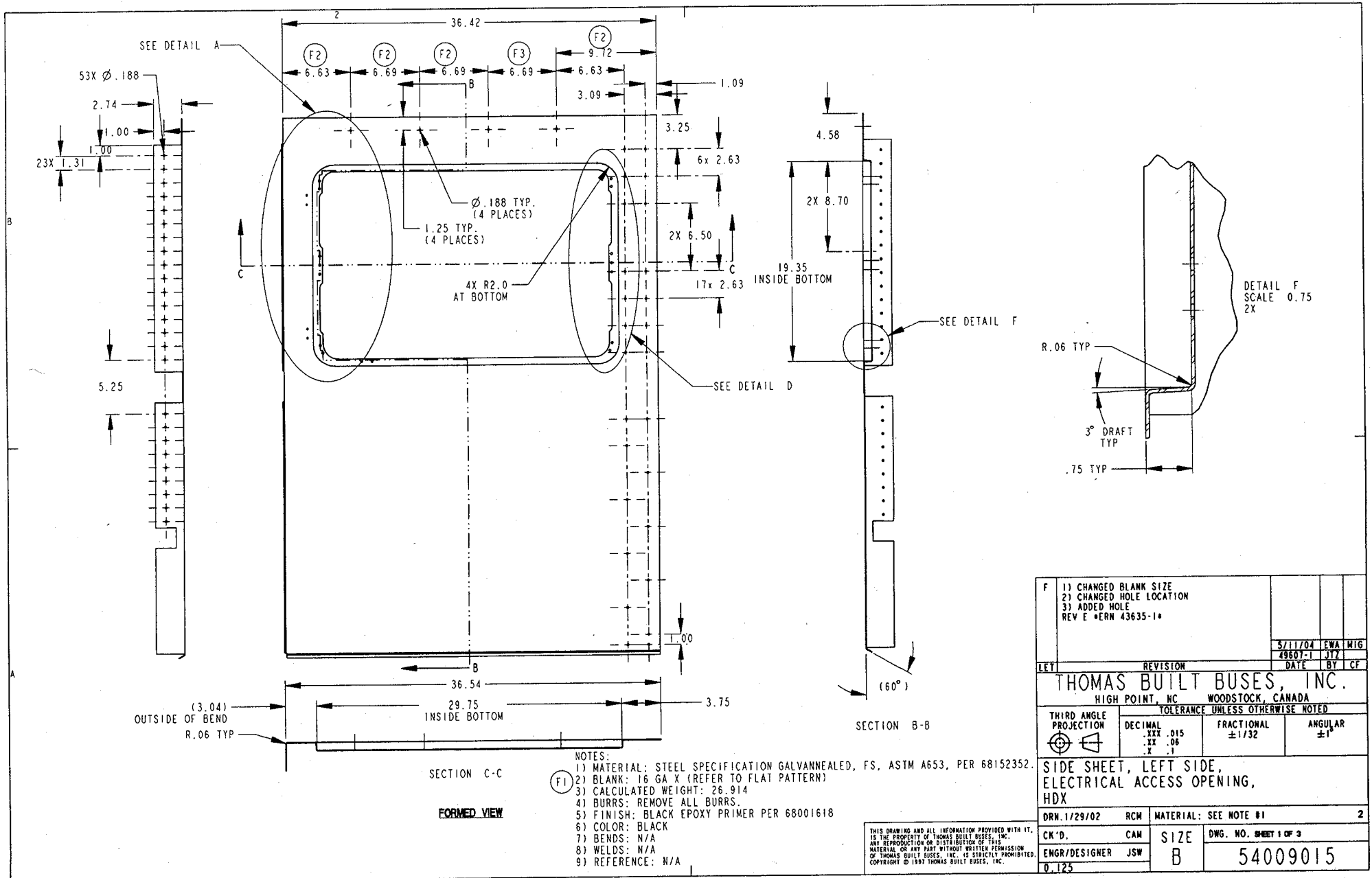
6	G1) WAS 2.00 G2) WAS 2.00 G3) WAS 39.57				
		07/13/06	JCD	MTG	
		ECR 1867-1	JTZ		
LET	REVISION	DATE	BY	CF	
THOMAS BUILT BUSES, INC.					
HIGH POINT, NC					
TOLERANCE UNLESS OTHERWISE NOTED					
THIRD ANGLE PROJECTION	DECIMAL ± .XXX .015 .XX .06 X .1	FRACTIONAL ±1/32	ANGULAR ±1°		
SIDE SHEET, LEFT SIDE, ELECTRICAL ACCESS OPENING, HDX					
DRN. 1/29/02	RCM	MATERIAL: SEE NOTE #1		1	
CK'D.	CAM	SIZE	DWG. NO. SHEET 1 OF 3		
ENGR/DESIGNER	JSW	B	54009015		
		0.067			



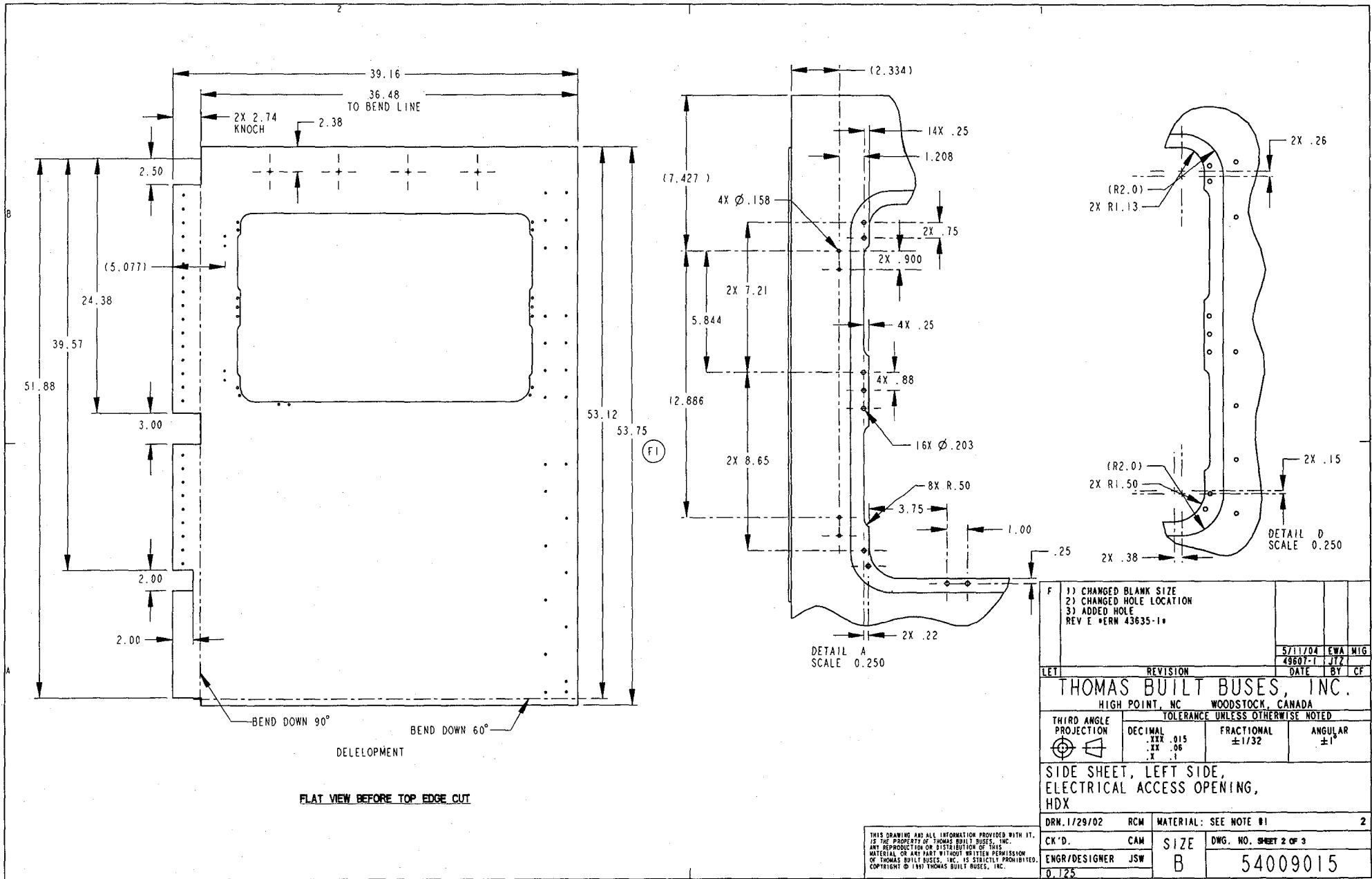
FLAT VIEW AFTER TOP EDGE CUT, WHICH IS AFTER OG IS FORMED

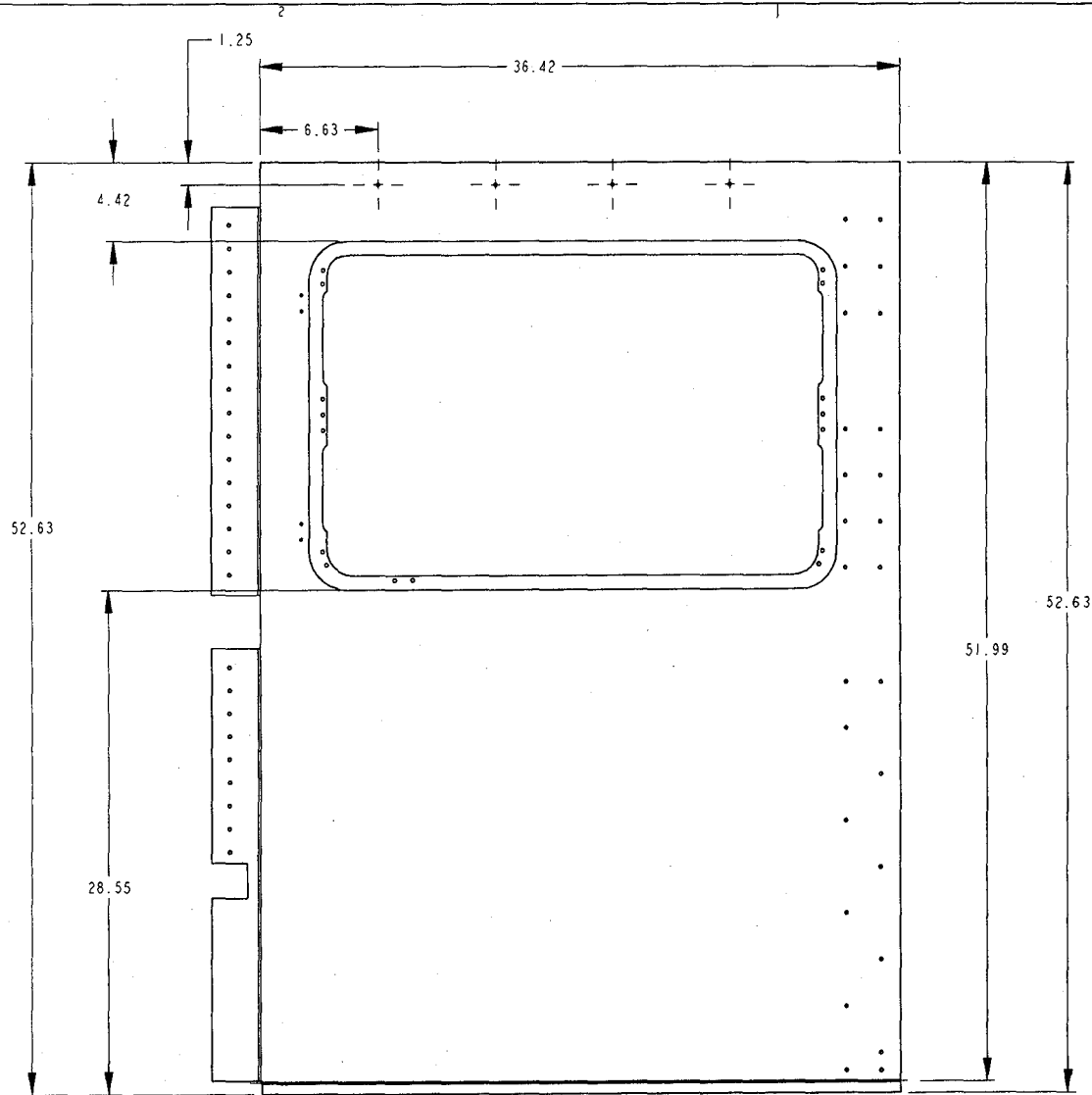
G		G1) WAS 2.00 G2) WAS 2.00 G3) WAS 39.57		07/13/06	JCD	WIG
LET		REVISION		DATE	BY	CF
THOMAS BUILT BUSES, INC. HIGH POINT, NC TOLERANCE UNLESS OTHERWISE NOTED						
THIRD ANGLE PROJECTION	DECIMAL ±	FRACTIONAL	ANGULAR			
	.XX .015 .XX .06 .X .1	±1/32	±1°			
SIDE SHEET, LEFT SIDE, ELECTRICAL ACCESS OPENING, HDX						
DRN. 1/29/02	RCM	MATERIAL: SEE NOTE #1				1
CK'D.	CAM	SIZE	DWG. NO. SHEET 3 OF 3			
ENGR/DESIGNER	JSW	B	54009015			
0.150						

THIS DRAWING AND ALL INFORMATION PROVIDED WITH IT, IS THE PROPERTY OF THOMAS BUILT BUSES, INC. ANY REPRODUCTION OR DISTRIBUTION OF THIS MATERIAL OR ANY PART WITHOUT WRITTEN PERMISSION OF THOMAS BUILT BUSES, INC. IS STRICTLY PROHIBITED. COPYRIGHT © 1997 THOMAS BUILT BUSES, INC.



F		1) CHANGED BLANK SIZE 2) CHANGED HOLE LOCATION 3) ADDED HOLE REV E *ERN 43635-1*		5/11/04	EWA	MIG
				49607-1	JTZ	
LET	REVISION	DATE	BY	CF		
THOMAS BUILT BUSES, INC.						
HIGH POINT, NC			WOODSTOCK, CANADA			
TOLERANCE UNLESS OTHERWISE NOTED						
THIRD ANGLE PROJECTION	DECIMAL	.XXX .015	FRACTIONAL	±1/32	ANGULAR	±1°
		.XX .06				
		.X .1				
SIDE SHEET, LEFT SIDE, ELECTRICAL ACCESS OPENING, HDX						
DRN. 1/29/02	RCW	MATERIAL: SEE NOTE #1		2		
CK'D.	CAM	SIZE	DWG. NO. SHEET 1 OF 3			
ENGR/DESIGNER	JSW	B	54009015			
0.125						

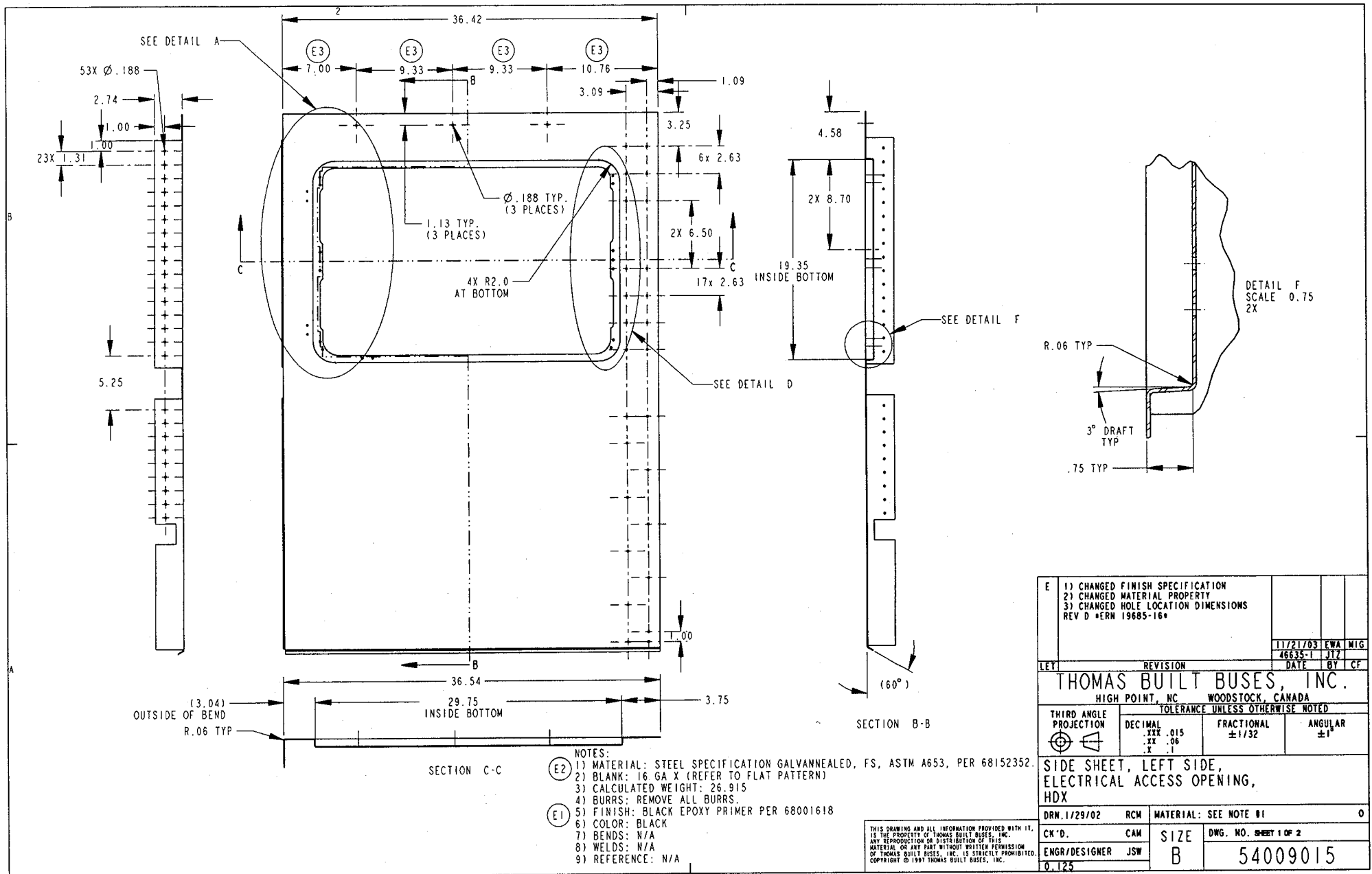




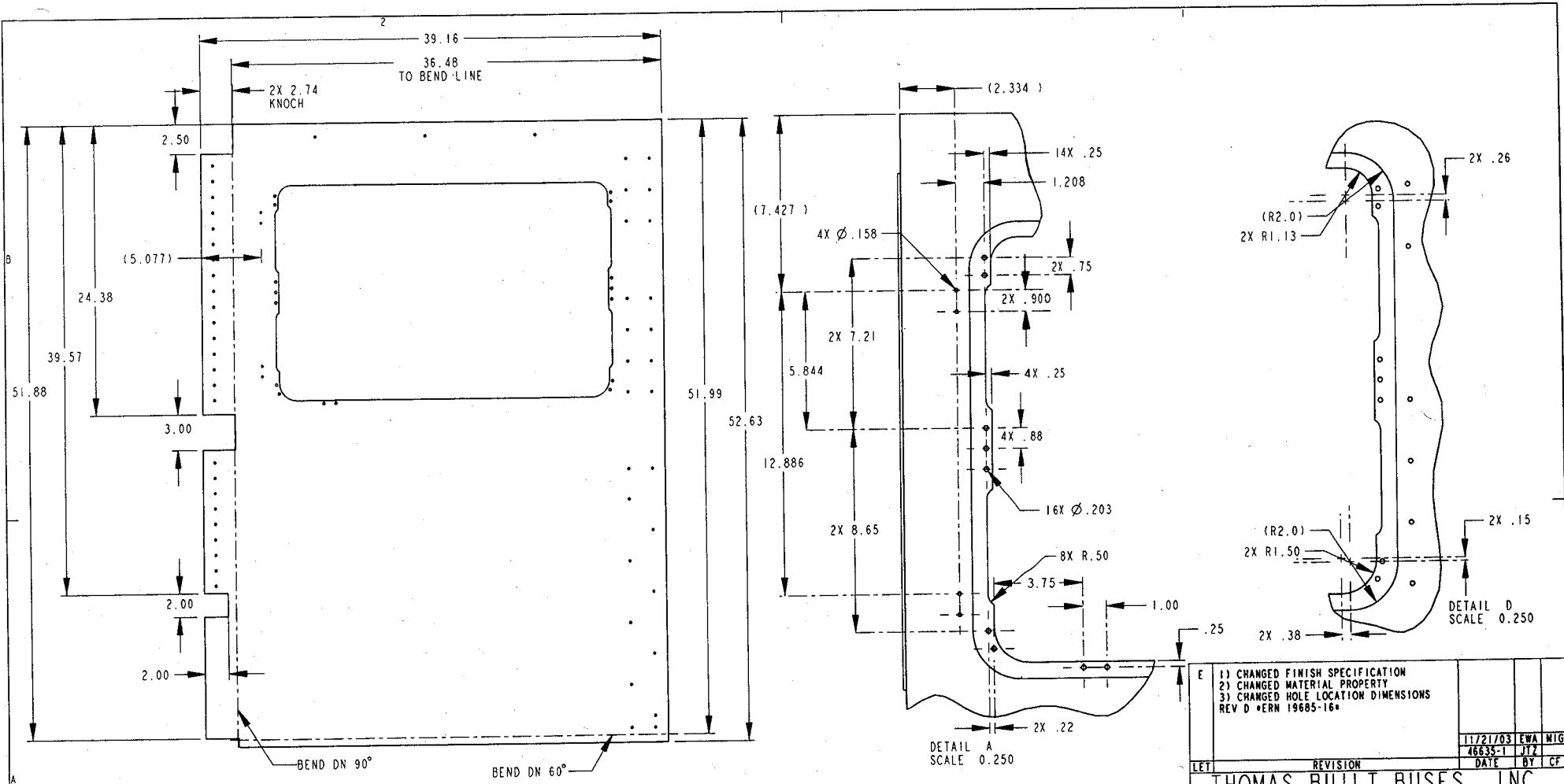
FLAT VIEW AFTER TOP EDGE CUT, WHICH IS AFTER OG IS FORMED

F	1) CHANGED BLANK SIZE 2) CHANGED HOLE LOCATION 3) ADDED HOLE					
				5/11/04	EWA	WIG
LET	REVISION	DATE	BY	CF		
THOMAS BUILT BUSES, INC.						
HIGH POINT, NC						
TOLERANCE UNLESS OTHERWISE NOTED						
THIRD ANGLE PROJECTION	DECIMAL ±	FRACTIONAL	ANGULAR			
	.XX .015	±1/32	±1°			
	.XX .06					
	.X .1					
SIDE SHEET, LEFT SIDE, ELECTRICAL ACCESS OPENING, HDX						
DRN. 11/29/02	RCM	MATERIAL: SEE NOTE #1				2
CK'D.	CAM	SIZE	DWG. NO. SHEET 3 OF 3			
ENGR/DESIGNER	JSW	B	54009015			
0.125						

THIS DRAWING AND ALL INFORMATION PROVIDED WITH IT, IS THE PROPERTY OF THOMAS BUILT BUSES, INC. ANY REPRODUCTION OR DISTRIBUTION OF THIS MATERIAL OR ANY PART WITHOUT WRITTEN PERMISSION OF THOMAS BUILT BUSES, INC. IS STRICTLY PROHIBITED. COPYRIGHT © 1997 THOMAS BUILT BUSES, INC.



E	1) CHANGED FINISH SPECIFICATION 2) CHANGED MATERIAL PROPERTY 3) CHANGED HOLE LOCATION DIMENSIONS REV D *ERM 19685-16*						
	11/21/03	EWA	MIG				
LET	REVISION	DATE	BY	CF			
THOMAS BUILT BUSES, INC. HIGH POINT, NC WOODSTOCK, CANADA							
TOLERANCE UNLESS OTHERWISE NOTED							
THIRD ANGLE PROJECTION	DECIMAL .XXX .015 .XX .06 .X .1	FRACTIONAL ± 1/32	ANGULAR ± 1°				
SIDE SHEET, LEFT SIDE, ELECTRICAL ACCESS OPENING, HDX							
DRN. 1/29/02	RCM	MATERIAL: SEE NOTE #1					0
CK'D.	CAM	SIZE	DWG. NO. SHEET 1 OF 2				
ENGR/DESIGNER	JSW	B	54009015				
0.125							



DEVELOPMENT

- 1) CHANGED FINISH SPECIFICATION
 - 2) CHANGED MATERIAL PROPERTY
 - 3) CHANGED HOLE LOCATION DIMENSIONS
- REV D *ERN 19685-16*

11/21/03	EWA	MIG
46635-1	JTJ	
DATE	BY	CF

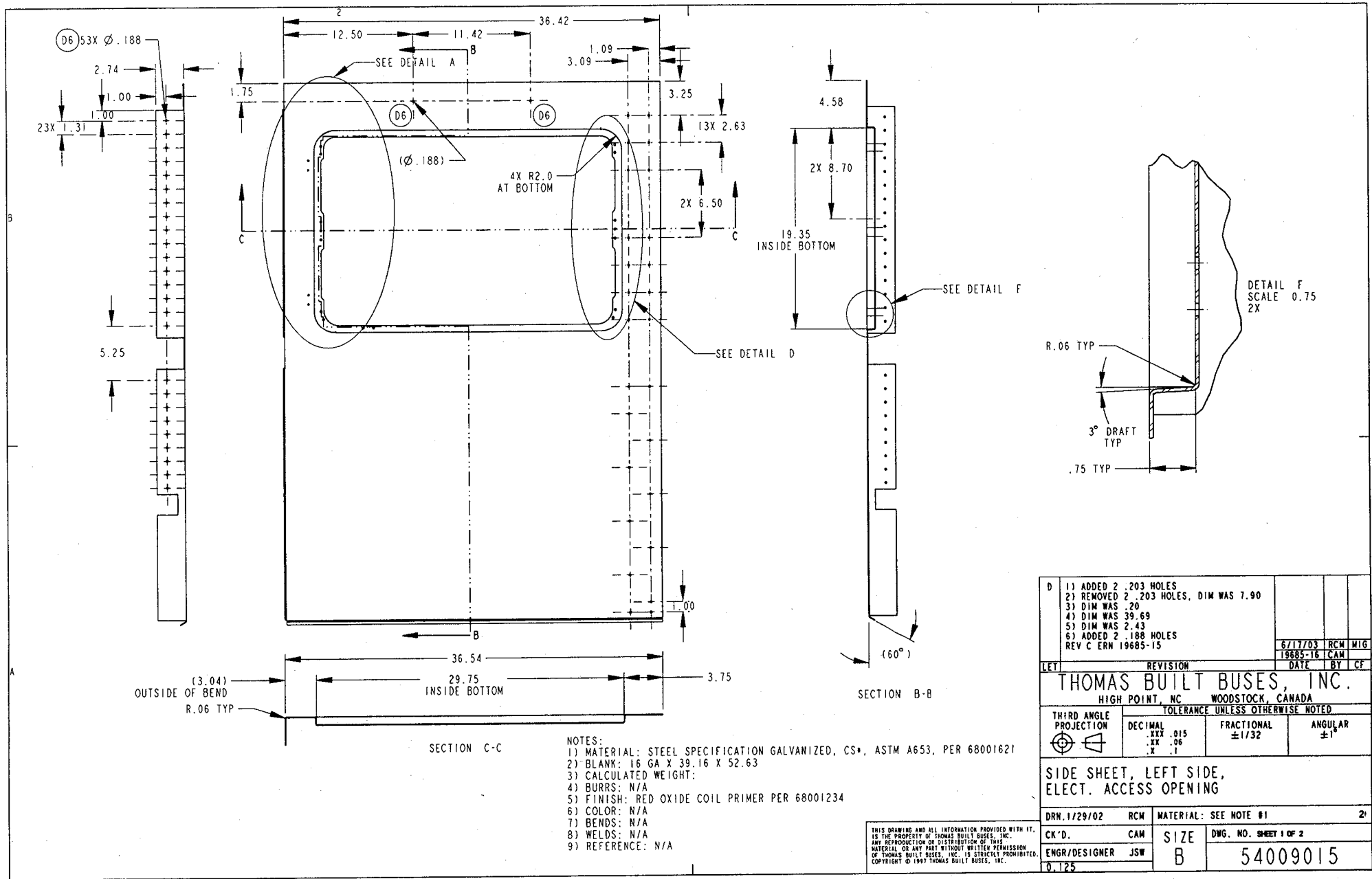
THOMAS BUILT BUSES, INC.
HIGH POINT, NC WOODSTOCK, CANADA

TOLERANCE UNLESS OTHERWISE NOTED			
THIRD ANGLE PROJECTION	DECIMAL .XXX .015 .XX .06 .X .1	FRACTIONAL ±1/32	ANGULAR ±1°

SIDE SHEET, LEFT SIDE,
ELECTRICAL ACCESS OPENING,
HDX

DRN. 11/29/02	RCM	MATERIAL: SEE NOTE #1	0
CX'D.	CAM	SIZE	DWG. NO. SHEET 2 OF 2
ENGR/DESIGNER	JSW	B	54009015
0.125			

THIS DRAWING AND ALL INFORMATION PROVIDED WITH IT, IS THE PROPERTY OF THOMAS BUILT BUSES, INC. ANY REPRODUCTION OR DISTRIBUTION OF THIS MATERIAL OR ANY PART WITHOUT WRITTEN PERMISSION OF THOMAS BUILT BUSES, INC. IS STRICTLY PROHIBITED. COPYRIGHT © 1997 THOMAS BUILT BUSES, INC.



SECTION C-C

SECTION B-B

DETAIL F
SCALE 0.75
2X

- NOTES:
- 1) MATERIAL: STEEL SPECIFICATION GALVANIZED, CS*, ASTM A653, PER 68001621
 - 2) BLANK: 16 GA X 39.16 X 52.63
 - 3) CALCULATED WEIGHT:
 - 4) BURRS: N/A
 - 5) FINISH: RED OXIDE COIL PRIMER PER 68001234
 - 6) COLOR: N/A
 - 7) BENDS: N/A
 - 8) WELDS: N/A
 - 9) REFERENCE: N/A

D	1) ADDED 2 .203 HOLES			
	2) REMOVED 2 .203 HOLES, DIM WAS 7.90			
	3) DIM WAS .20			
	4) DIM WAS 39.69			
	5) DIM WAS 2.43			
	6) ADDED 2 .188 HOLES			
	REV C ERN 19685-15			
		6/17/03	RCM	MIG
		19685-16	CAM	

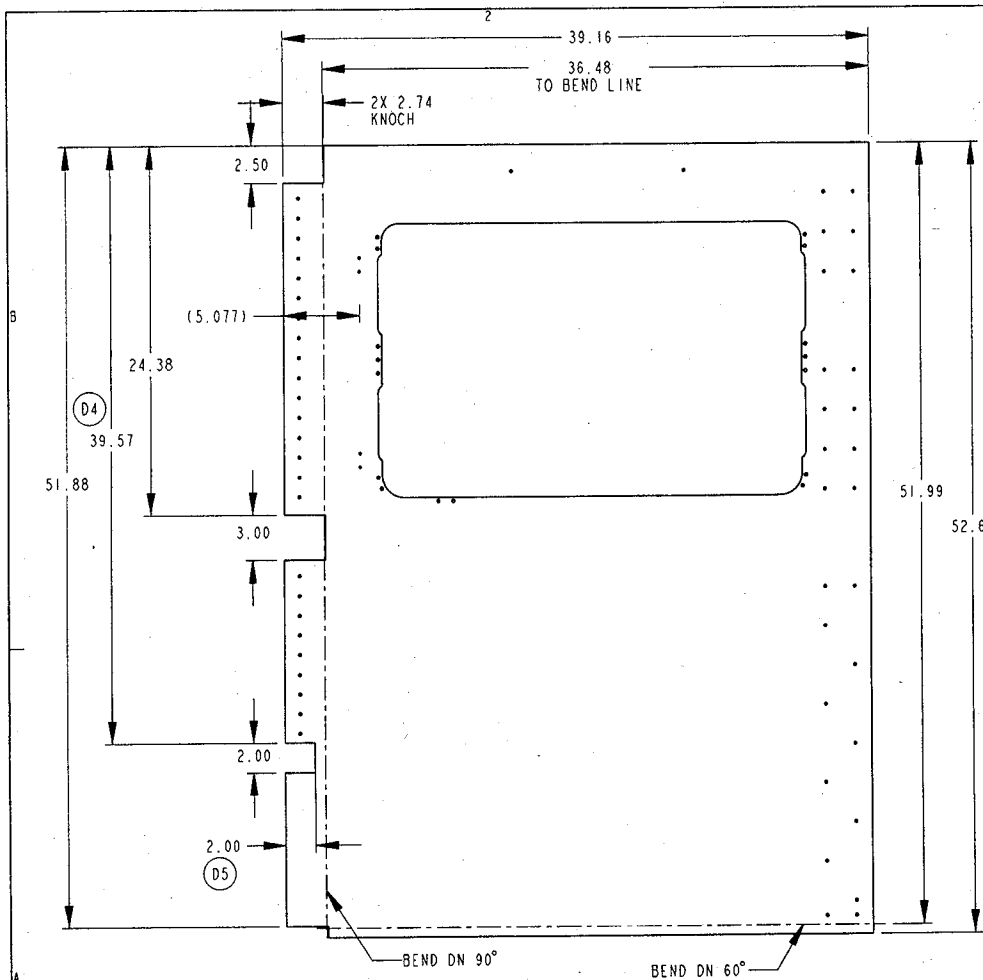
THOMAS BUILT BUSES, INC.
HIGH POINT, NC WOODSTOCK, CANADA

TOLERANCE UNLESS OTHERWISE NOTED			
THIRD ANGLE PROJECTION	DECIMAL	FRACTIONAL	ANGULAR
	.XXX .015	±1/32	±1°
	.XX .06		
	.X .1		

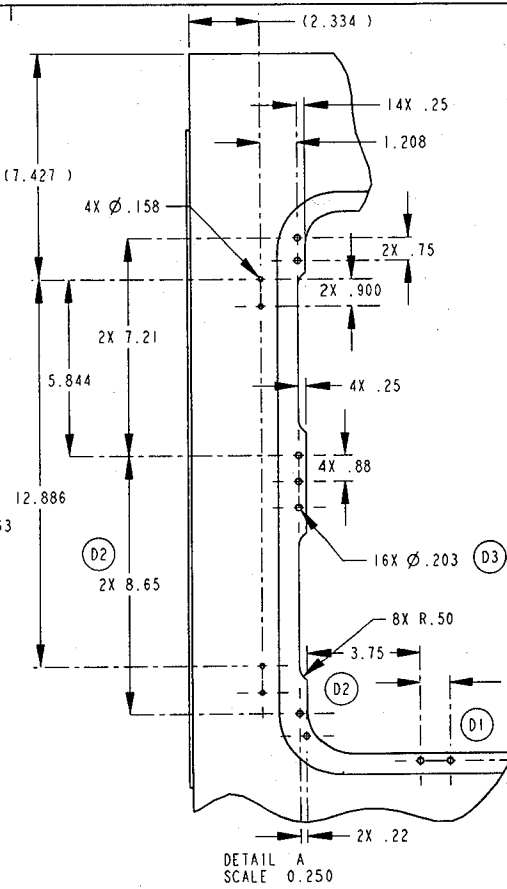
SIDE SHEET, LEFT SIDE,
ELECT. ACCESS OPENING

DRN. 1/29/02	RCM	MATERIAL: SEE NOTE #1	2'
CK'D.	CAM	SIZE	DWG. NO. SHEET 1 OF 2
ENGR/DESIGNER	JSW	B	54009015
0.125			

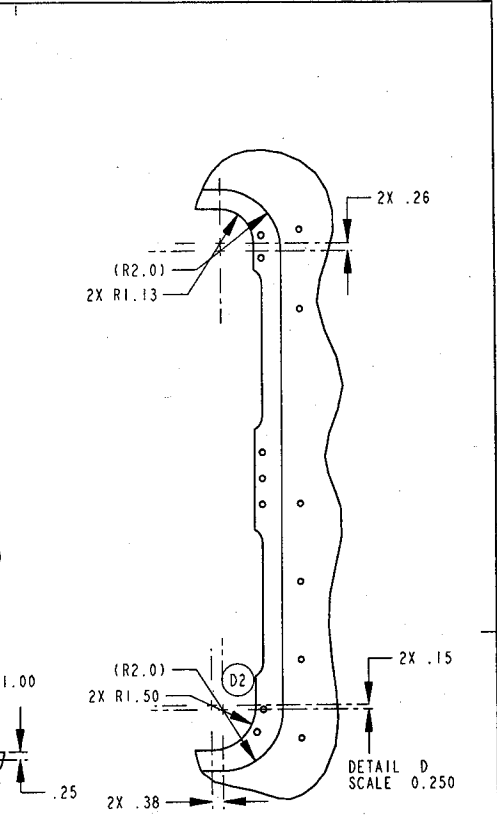
THIS DRAWING AND ALL INFORMATION PROVIDED WITH IT,
IS THE PROPERTY OF THOMAS BUILT BUSES, INC.
ANY REPRODUCTION OR DISTRIBUTION OF THIS
MATERIAL OR ANY PART WITHOUT WRITTEN PERMISSION
OF THOMAS BUILT BUSES, INC. IS STRICTLY PROHIBITED.
COPYRIGHT © 1997 THOMAS BUILT BUSES, INC.



DEVELOPMENT



DETAIL A
SCALE 0.250



DETAIL D
SCALE 0.250

D	1) ADDED 2 .203 HOLES 2) REMOVED 2 .203 HOLES, DIM WAS 7.90 3) DIM WAS .20 4) DIM WAS 39.69 5) DIM WAS 2.43 6) ADDED 2 .188 HOLES REV C ERN 19685-15	6/17/03	RCM	MIG
		19685-16	CAM	

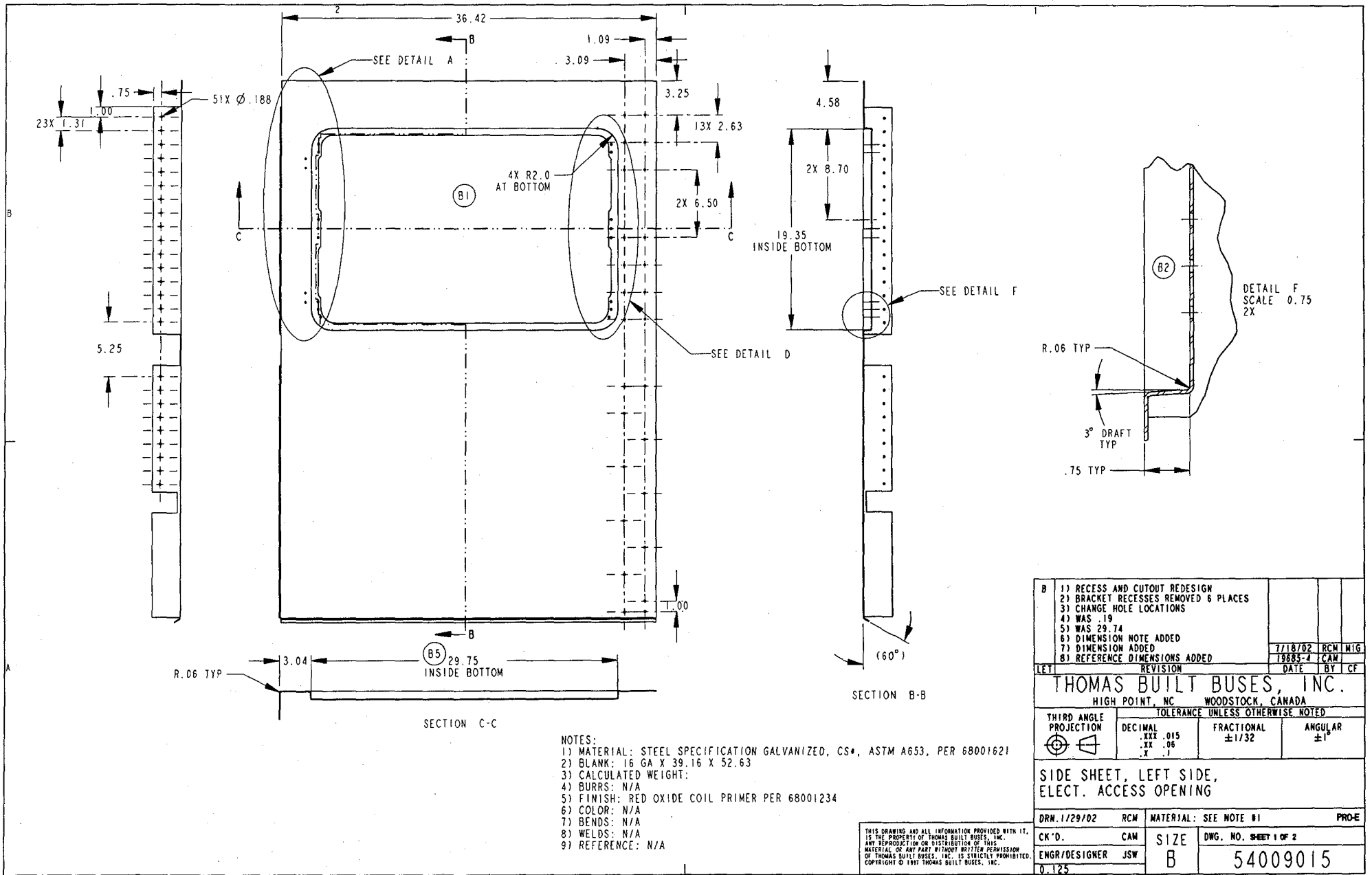
THOMAS BUILT BUSES, INC.
HIGH POINT, NC WOODSTOCK, CANADA

THIRD ANGLE PROJECTION	TOLERANCE UNLESS OTHERWISE NOTED		
	DECIMAL .XXX .015 .XX .06 .X .1	FRACTIONAL ±1/32	ANGULAR ±1°

SIDE SHEET, LEFT SIDE,
ELECT. ACCESS OPENING

DRN. 1/29/02	RCM	MATERIAL: SEE NOTE #1	2
CK'D.	CAM	SIZE	DWG. NO. SHEET 2 OF 2
ENGR/DESIGNER	JSW	B	54009015
0.125			

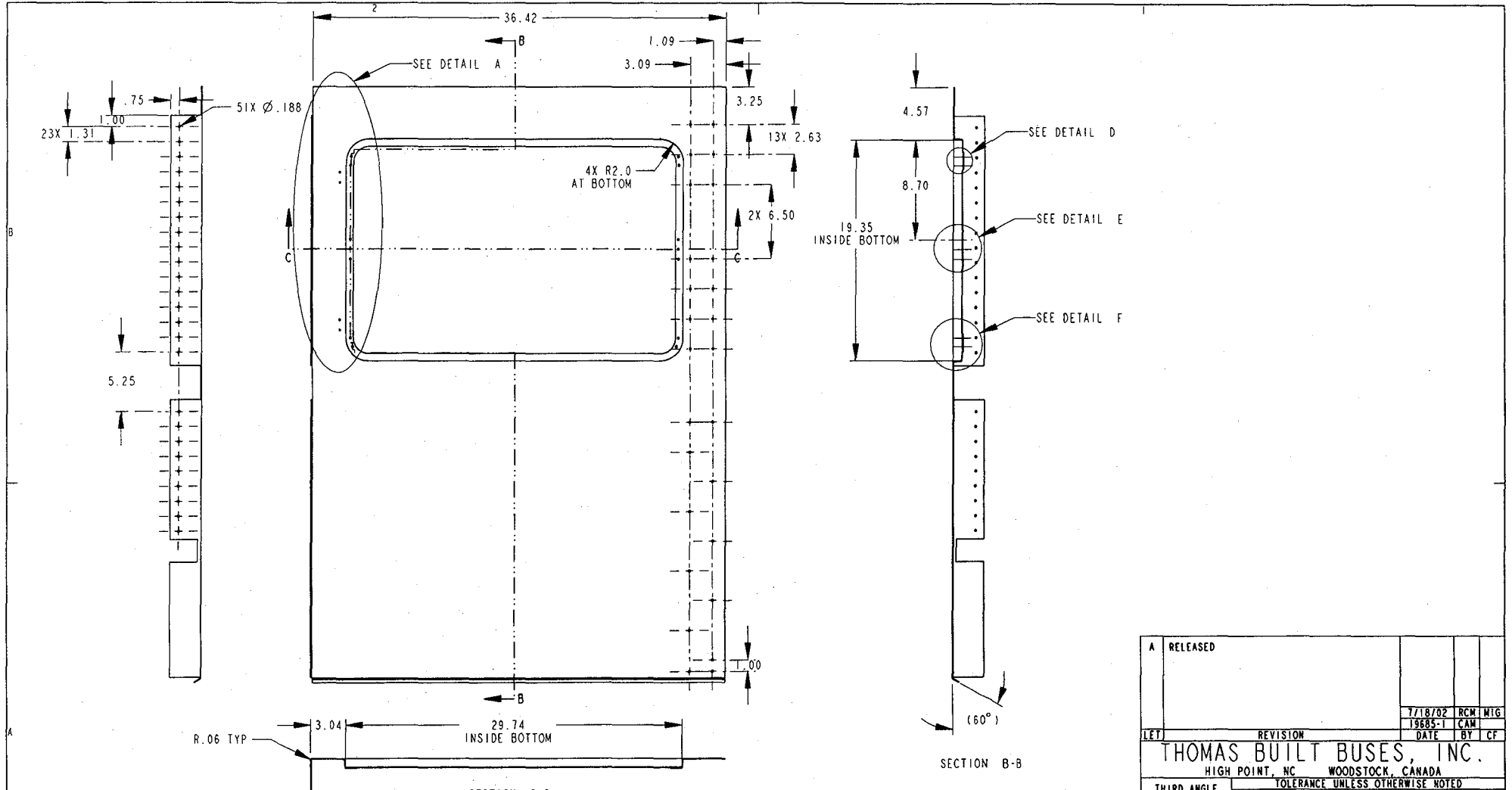
THIS DRAWING AND ALL INFORMATION PROVIDED WITH IT, IS THE PROPERTY OF THOMAS BUILT BUSES, INC. ANY REPRODUCTION OR DISTRIBUTION OF THIS MATERIAL, OR ANY PART WITHOUT WRITTEN PERMISSION OF THOMAS BUILT BUSES, INC. IS STRICTLY PROHIBITED. COPYRIGHT © 1997 THOMAS BUILT BUSES, INC.



- NOTES:
- 1) MATERIAL: STEEL SPECIFICATION GALVANIZED, CS*, ASTM A653, PER 68001621
 - 2) BLANK: 16 GA X 39.16 X 52.63
 - 3) CALCULATED WEIGHT:
 - 4) BURRS: N/A
 - 5) FINISH: RED OXIDE COIL PRIMER PER 68001234
 - 6) COLOR: N/A
 - 7) BENDS: N/A
 - 8) WELDS: N/A
 - 9) REFERENCE: N/A

B	1) RECESS AND CUTOUT REDESIGN			
	2) BRACKET RECESSES REMOVED 6 PLACES			
	3) CHANGE HOLE LOCATIONS			
	4) WAS .19			
	5) WAS 29.74			
	6) DIMENSION NOTE ADDED			
	7) DIMENSION ADDED			
	8) REFERENCE DIMENSIONS ADDED			
LET	REVISION	DATE	BY	CF
THOMAS BUILT BUSES, INC.				
HIGH POINT, NC WOODSTOCK, CANADA				
TOLERANCE UNLESS OTHERWISE NOTED				
THIRD ANGLE PROJECTION	DECIMAL XXX .015 XX .06 X .1	FRACTIONAL ±1/32	ANGULAR ±1°	
SIDE SHEET, LEFT SIDE, ELECT. ACCESS OPENING				
DRN. 1/29/02	RCM	MATERIAL: SEE NOTE #1		PROE
CK'D.	CAM	SIZE	DWG. NO. SHEET 1 OF 2	
ENGR/DESIGNER	JSW	B	54009015	
0.125				

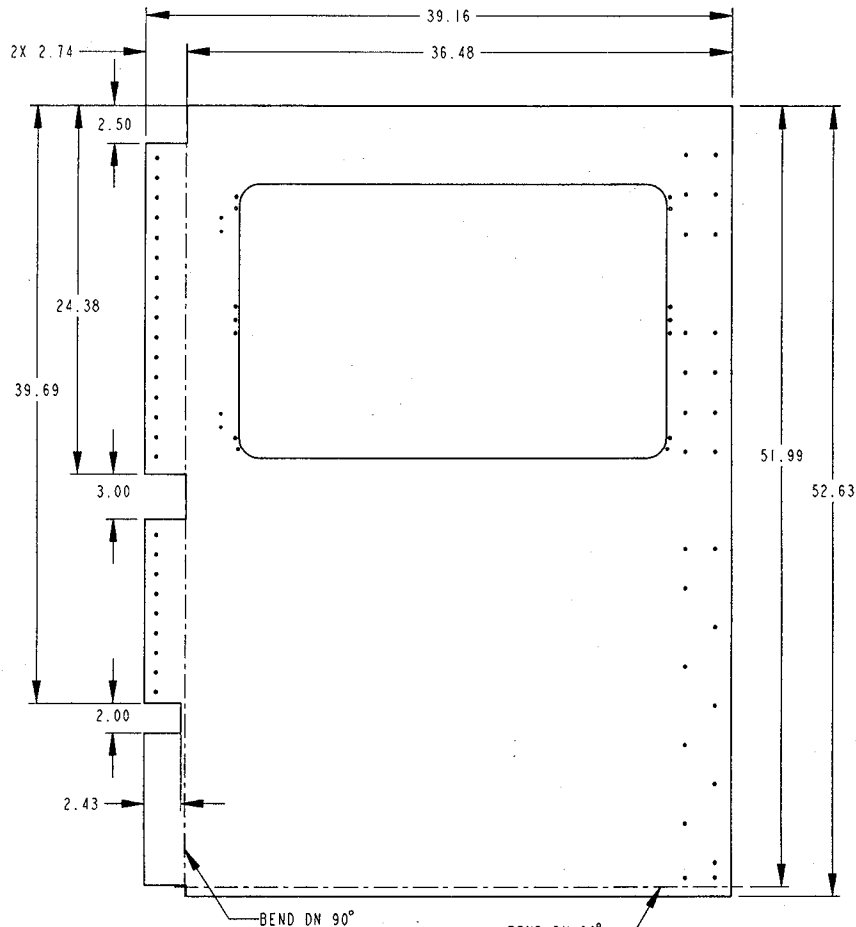
THIS DRAWING AND ALL INFORMATION PROVIDED WITH IT, IS THE PROPERTY OF THOMAS BUILT BUSES, INC. ANY REPRODUCTION OR DISTRIBUTION OF THIS MATERIAL OR ANY PART WITHOUT WRITTEN PERMISSION OF THOMAS BUILT BUSES, INC. IS STRICTLY PROHIBITED. COPYRIGHT © 1997 THOMAS BUILT BUSES, INC.



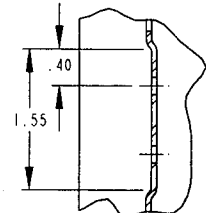
- NOTES:
- 1) MATERIAL: STEEL SPECIFICATION GALVANIZED, CS*, ASTM A653, PER 68001621
 - 2) BLANK: 16 GA X 39.16 X 52.63
 - 3) CALCULATED WEIGHT:
 - 4) BURRS: N/A
 - 5) FINISH: RED OXIDE COIL PRIMER PER 68001234
 - 6) COLOR: N/A
 - 7) BENDS: N/A
 - 8) WELDS: N/A
 - 9) REFERENCE: N/A

THIS DRAWING AND ALL INFORMATION PROVIDED WITH IT, IS THE PROPERTY OF THOMAS BUILT BUSES, INC. ANY REPRODUCTION OR DISTRIBUTION OF THIS MATERIAL OR ANY PART WITHOUT WRITTEN PERMISSION OF THOMAS BUILT BUSES, INC. IS STRICTLY PROHIBITED. COPYRIGHT © 1997 THOMAS BUILT BUSES, INC.

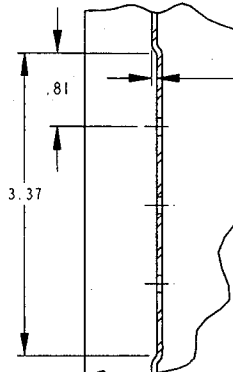
A		RELEASED			
				7/18/02	RCM MIG
				19685-1	CAM
LET	REVISION	DATE	BY	CF	
THOMAS BUILT BUSES, INC.					
HIGH POINT, NC WOODSTOCK, CANADA					
TOLERANCE UNLESS OTHERWISE NOTED					
THIRD ANGLE PROJECTION	DECIMAL	FRACTIONAL	ANGULAR		
	.XXX .015 .XX .06 .X .1	±1/32	±1°		
SIDE SHEET, LEFT SIDE, ELECT. ACCESS OPENING					
DRN. 1/29/02	RCM	MATERIAL: SEE NOTE #1		PRO-E	
CK'D.	CAM	SIZE	DWG. NO. SHEET 1 OF 2		
ENGR/DESIGNER	JSW	B	54009015		
D.125					



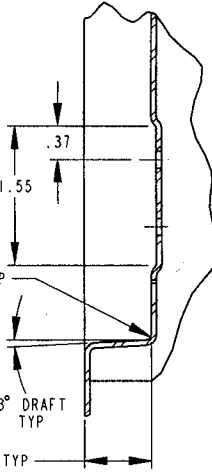
DEVELOPMENT



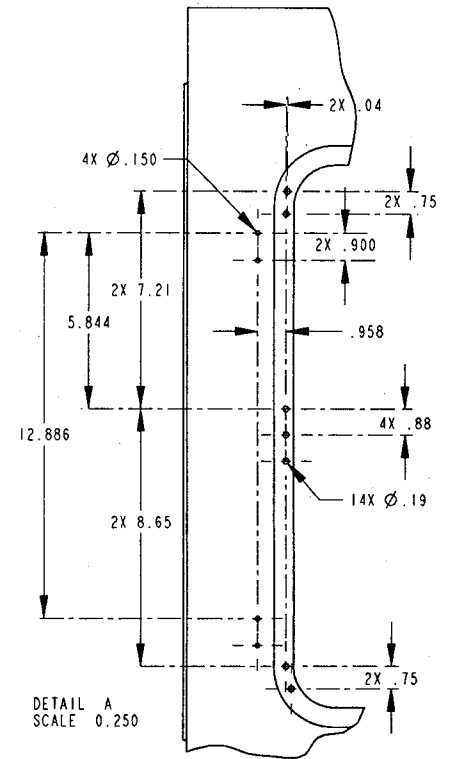
DETAIL D
SCALE 0.75
2X



DETAIL E
SCALE 0.75
2X



DETAIL F
SCALE 0.75
2X



DETAIL A
SCALE 0.250

A	RELEASED				
7/18/02	RCM	MIG			
19685-1	CAM				
LETT	REVISION	DATE	BY	CF	

THOMAS BUILT BUSES, INC.
HIGH POINT, NC WOODSTOCK, CANADA

THIRD ANGLE PROJECTION	TOLERANCE UNLESS OTHERWISE NOTED		
	DECIMAL .XXX .015 .2X .06 .X .1	FRACTIONAL ±1/32	ANGULAR ±1°

SIDE SHEET, LEFT SIDE,
ELECT. ACCESS OPENING

DRN. 1/29/02	RCM	MATERIAL: SEE NOTE #1	PRO-E
CK'D.	CAM	SIZE	DWG. NO. SHEET 2 OF 2
ENGR/DESIGNER	JSW	B	54009015
0.125			

THIS DRAWING AND ALL INFORMATION PROVIDED WITH IT, IS THE PROPERTY OF THOMAS BUILT BUSES, INC. ANY REPRODUCTION OR DISTRIBUTION OF THIS MATERIAL OR ANY PART WITHOUT WRITTEN PERMISSION OF THOMAS BUILT BUSES, INC. IS STRICTLY PROHIBITED. COPYRIGHT © 1997 THOMAS BUILT BUSES, INC.