

PE07-029

Attachment 27

**Product Support Bulletins
(Published and Drafts)**



BODY

MODEL: FS-65, HDX, & MVP-EF (PC BOARD BASED)

SUBJECT: PROTECTIVE COVER FOR PC BOARDS

DATE: JUNE 10, 2005

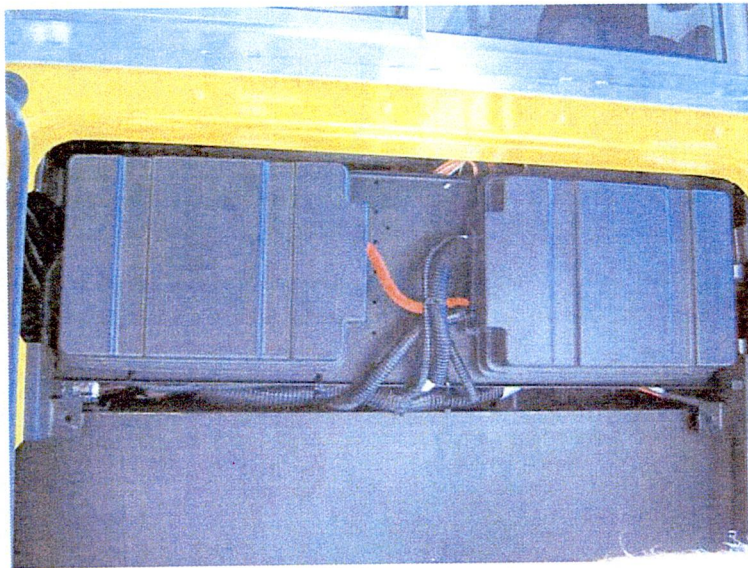
INDEX: 5

PAGE: 1 OF 1

BULLETIN: 19

A snap-on PC Board Cover was implemented in production on 4/4/05 to help prevent moisture from entering the side panel PC Boards.

Orientate Covers, snap-on as shown in picture below.



TBB 52007444, PC Board Cover

<u>PART NUMBER</u>	<u>QTY.</u>	<u>DESCRIPTION</u>
TBB 52007444	AR	PC Board Cover, Snap-On

WARRANTY STATUS:

SIX MONTHS FROM DATE OF THIS BULLETIN.

NOTE: WARRANTY CLAIMS FILED AFTER SIX MONTHS FROM DATE OF BULLETIN WILL BE REVIEWED; HOWEVER, IF MOISTURE IS PRESENT, CLAIM WILL BE DENIED.

ELECTRONIC WARRANTY CODE: 6416

SRT CODE: 52-23, TIME ALLOWANCE - 0.1 HRS.

Product Support Bulletin



BODY

MODEL: FS-65, HDX, & MVP-EF

SUBJECT: PROTECTIVE COVER FOR PC BOARDS UPGRADE

DATE: JUNE , 2007

INDEX: 5

PAGE: 1 OF 2

BULLETIN: 19R

This bulletin supercedes Index 5, Bulletin 19 to provide an upgrade of the PC Board Protective Cover, part #TBB 134172. The new Cover is better secured with two (2) Thumb Nuts, part #TBB 134173. The upgrade was started in production on 05/31/07, with body #731108.

Installation of Cover(s):

1. Disconnect batteries.
2. Access the Printed Circuit Boards under driver's window. **(Figure 1)**
3. Remove old PC Board Covers, if applicable.
4. Remove the two panel screws. (Retain screws for reinstallation.) Lower the panel.
5. Remove lower right and upper left fasteners, and discard.
6. Install Screw, #TBB 29900018 through the back side of the panel and through the PC Board so that the threaded end of the screw projects beyond the PC Board. **(Figure 2)**
7. Add Nut, #TBB 27120361 to each screw installed at step #6.
8. Install new Cover, #TBB 134172, and securing with Thumb Nut, #TBB 134173.

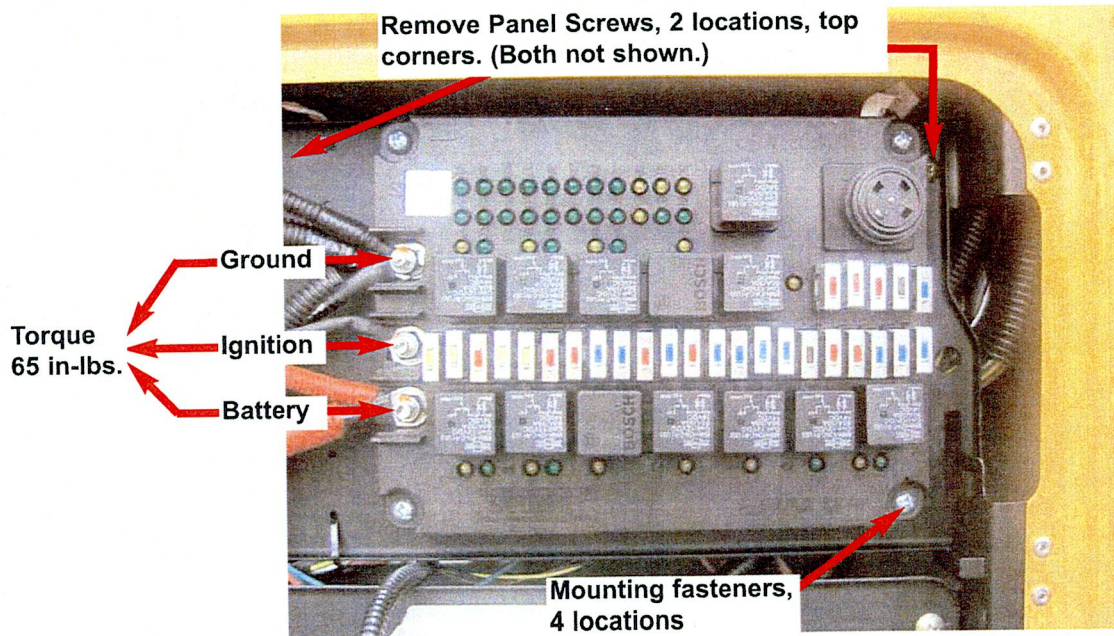


Figure 1

Product Service Bulletin

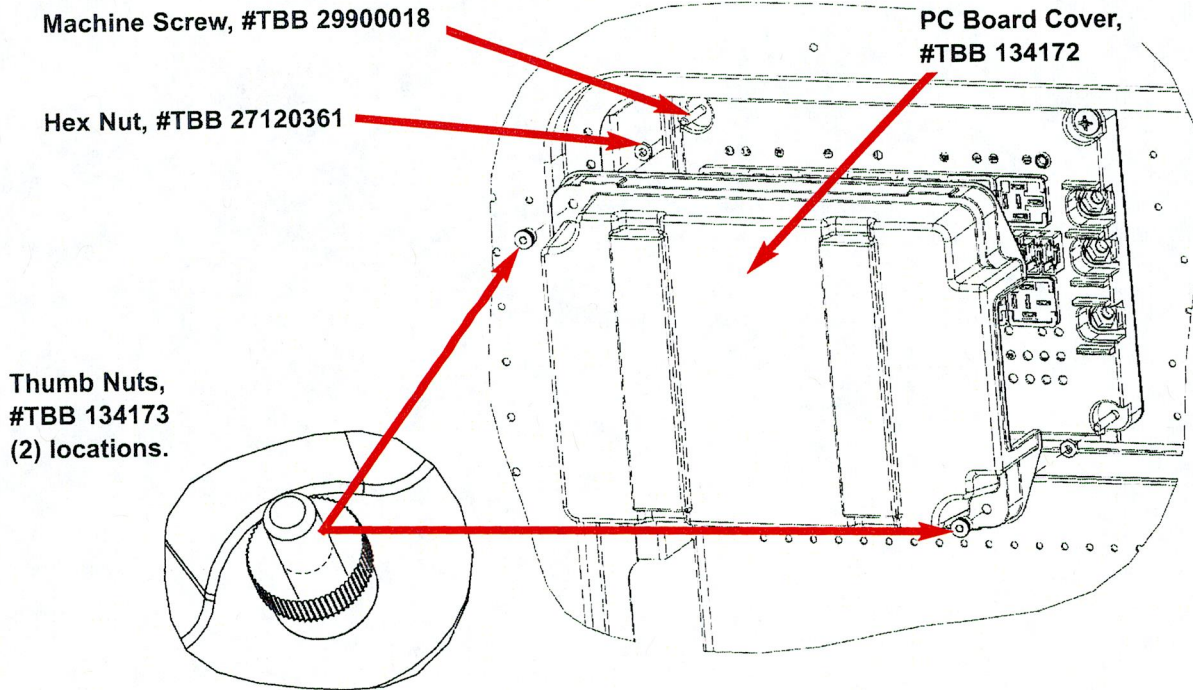


Figure 2

MATERIALS REQUIRED:

<u>PART NUMBER</u>	<u>QTY.</u>	<u>DESCRIPTION</u>
TBB 134172	A/R	PC Board Cover
TBB 134173	A/R	Thumb Nut
TBB 29900018	A/R	Screw, Machine, #10 - 24 x 2.00
TBB 27120361	A/R	Nut - Hex, #10 - 24

WARRANTY STATUS:

WITHIN PROVISIONS OF TBB WARRANTY

ELECTRONIC WARRANTY CODE: 6416

SRT CODE: 52-23 , TIME ALLOWANCE - 0.5 HR. TO PERFORM PSB

QUALITY CODE: X09



BODY

MODEL: FS-65, ER-HD, HDX, MVP-EF

SUBJECT: SIDE ELECTRICAL ACCESS PANEL SEALING

DATE: APRIL, 2007

INDEX: 2

PAGE: 1 OF

BULLETIN: XX

Figure 1 shows current installation for rubber seal around electrical access door.

Current profile of seal installation



Figure 1

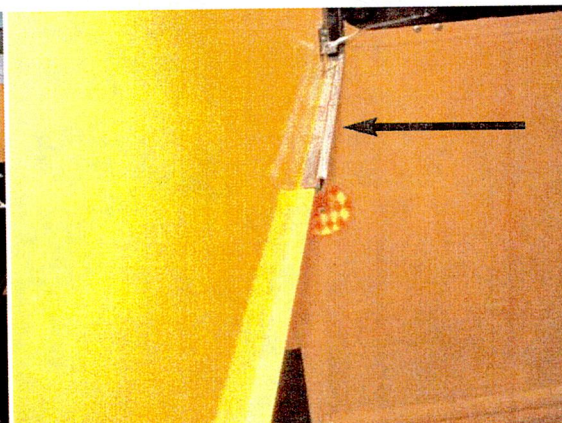


Figure 2

Proposed orientation of seal profile

Rubber Door Seal installed the proposed way

Draft

PAGE:

INDEX:

BULLETIN:

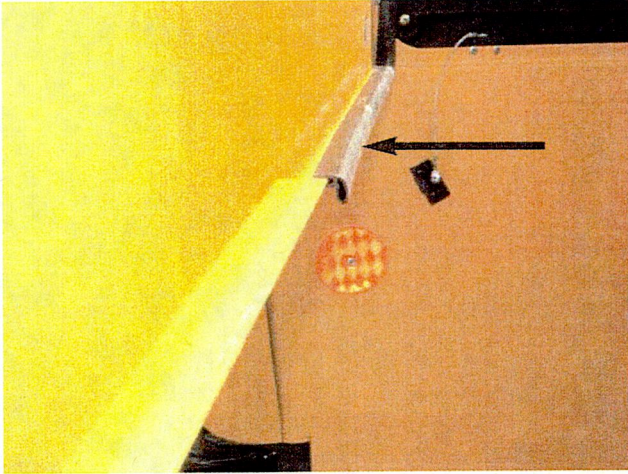


Figure 3

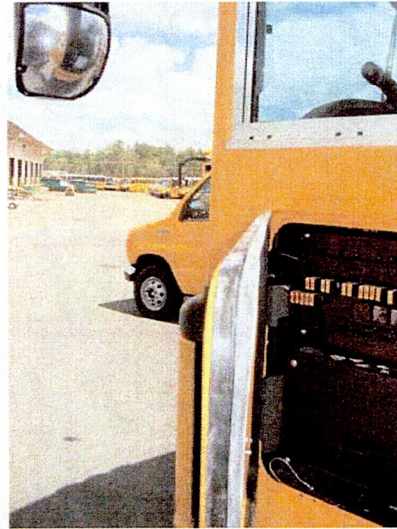


Figure 4

Rubber Door Seal installed the current way. Note the rubber does not fill the opening gap around the door

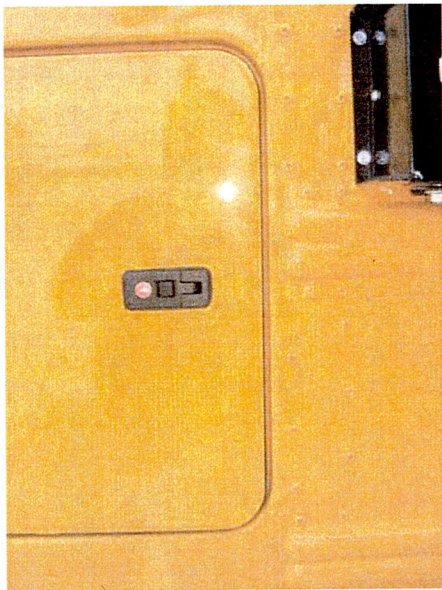


Figure 5

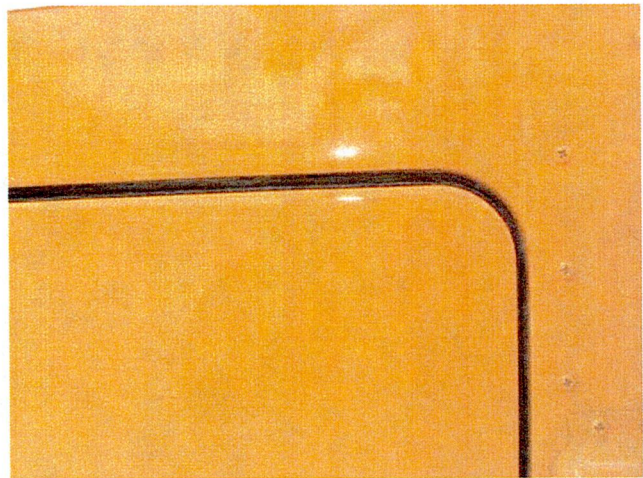


Figure 6

Draft

PAGE:

INDEX:

BULLETIN:

Rubber Door Seal installed the proposed way. Note the rubber now fills the opening gap around the door and prevents water intrusion

On proposed way of installing the rubber door seal it was necessary to shim the hinges out with a flat washer at each hinge screw where the hinges attach to the body, the door side of the hinge requires no shims. The reason for the shims is so the rubber will bypass the rivets on the door frame to prevent the rubber from folding inward when the door is shut. The entire rubber seal was also lubed to aid in the ease of closing the door.

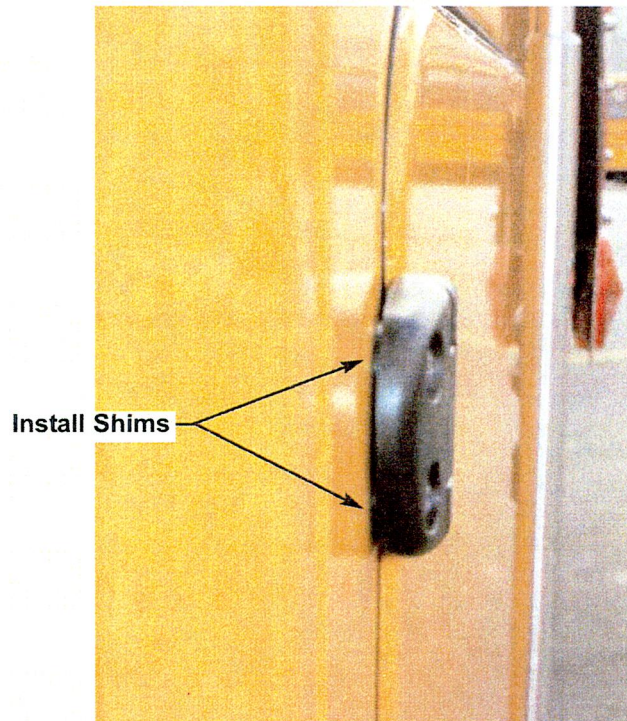


Figure 7

MATERIALS REQUIRED:

<u>PART NUMBER</u>	<u>QTY.</u>	<u>DESCRIPTION</u>
TBB		

WARRANTY STATUS:

INFORMATION ONLY