

NISSAN

NISSAN NORTH AMERICA, INC.

Corporate Office
P.O. Box 685001
Franklin, TN 37068-5001
Telephone: 615.725.1000

Frank
8/22/07

August 21, 2007

Mr. Thomas Cooper, Chief
Vehicle Integrity Division
Office of Defects Investigation
National Highway Traffic Safety Administration
1200 New Jersey Avenue SE.
Washington, D.C. 20590

Re: EA06-020; NVS-212mjl

Dear Mr. Cooper:

Enclosed is Nissan's response to the referenced NHTSA Information Request concerning the Agency's peer investigation of 2004 through 2006 model year Nissan Quest vehicles equipped with power liftgates.

The attached reply responds by first stating each question, then the response. Please contact us if you have any questions.

Sincerely,



Frank D. Slaveter
Senior Manager
Technical Compliance

Enclosures

08/22/07 10:02 AM
08/22/07 10:02 AM
08/22/07 10:02 AM

**Response to
EA06-020**

INTRODUCTION

In accordance with discussions with the Agency's Thomas Cooper, an extension of time was granted until August 13, 2007 to respond to this Information Request ("IR"). Nissan appreciates the Agency's courtesy in this regard.

In responding to this Information Request ("IR"), information has been obtained from those places within Nissan likely to contain such information in the regular and ordinary course of business. When a particular Request seeks "documents" as defined in the IR, reasonable, good faith searches have also been made of corporate records in those places likely to maintain them in the regular and ordinary course of business.

The definitions of "documents" and "Nissan", however, are unreasonably broad, vague and ambiguous in the context of the information sought by this IR. For example, "calendars", "appointment books", "financial statements" and "personnel records" would not contain owner complaints, field reports or other information sought by Question 2 pertaining to the subject condition. Therefore, searches were not made for such "documents", inasmuch as they would not likely contain responsive information. Nissan has excluded certain instances of electrical motor malfunction that do not pertain to the subject condition. In addition, Nissan has not provided information from persons or entities over which it does not ordinarily exercise control. Nissan understands this IR to seek information on vehicles manufactured for sale in the United States.

Responses are provided after each question, and Attachments are utilized as appropriate. The source of information used as a basis for the data in each Attachment, including the date the data were updated and retrieved, is identified at the beginning of each Attachment, as applicable. If a document itself is the source for the requested information and it is provided, we assume no further source identification is called for. If a document, drawing or component is requested, or if no responsive information is available, we assume no further source identification is called for.

With regard to claims of privilege, Nissan understands that it is acceptable to the Agency for Nissan to identify specific categories of privileged documents rather than any specific document. These specific categories are: 1) communications between outside counsel and Nissan Legal Department employees, other Nissan employees, or other Nissan-represented parties in litigation and claims; 2) communications between Nissan Legal Department employees and other Nissan employees or other Nissan-represented parties in litigation or claims; 3) notes and other work product of outside counsel or of Nissan Legal Department employees concerning communications with Nissan employees or consultants, and the work product of those employees or consultants done for or at the request of outside counsel or Legal Department employees; and 4) other categories to be identified later as necessary. For any privileged documents that are not included in these categories, such documents, if any, will be specifically identified on a separate privilege index at a later time. To the extent that a document is furnished, Nissan is not asserting a privilege claim for that document, although the disclosure of such document does not waive the attorney-client privilege or work-product protection with respect to other documents prepared in connection with the specific litigation or claim or other litigation or claims. In addition, in submitting such documents, we reserve our right to claim the attorney-client privilege and/or work-product protection with respect to analyses that may be prepared subsequently in connection with these and other cases. Also, we understand documents specifically related to the preparation of the responses are not sought.

Nissan believes NHTSA's policy is to protect the privacy of individuals under exemption 6 of the Freedom of Information Act, 5 U.S.C. Section 552(b)(6). We understand that name, address, and other personal information of owners or other individuals, including Nissan personnel, contained in any of the attachments in this response will not be made available to the public. Therefore, Nissan is not requesting confidential treatment for this information pursuant to 49 CFR, Part 512, but we believe any private information concerning individuals should not be made public.

* * * * *

1. State, by model and model year, the total number of subject peer vehicles Nissan has manufactured for sale or lease in the United States. Separately, for each vehicle manufactured to date by Nissan, state the following:
 - a. Make;
 - b. Model;
 - c. Model Year;
 - d. Vehicle identification number (VIN);
 - e. Date of manufacture;
 - f. Date warranty coverage commenced; and
 - g. The State in the United States where the vehicle was originally sold or leased (or delivered for sale or lease).

Provide the table in Microsoft Access 2000, or a compatible format, entitled "PRODUCTION DATA."

The number of the subject vehicles (equipped with a power lift gate) manufactured for sale or lease in the United States is 92,800. The information requested in 1.a through 1.g is provided, when known, in a file titled, "PRODUCTION DATA.mdb" on a CD enclosed as Attachment A.

2. State the number of each of the following, received by Nissan, or of which Nissan is otherwise aware, which relate to, or may relate to, the subject condition in the subject peer vehicles, by model and model year:
 - a. Consumer complaints, including those from fleet operators;
 - b. Field reports, including dealer field reports;
 - c. Reports involving a crash, injury, or fatality based on claims against the manufacturer involving a death or injury, notices received by the manufacturer alleging or proving that a death of injury was caused by a possible defect in a subject peer vehicle, property damage claims, consumer complaints, or field reports;
 - d. Property damage claims;
 - e. Third-party arbitration proceedings where Nissan is or was a party to the arbitration; and
 - f. Lawsuits, both pending and closed, in which Nissan is or was a defendant or codefendant.

For subparts "a" through "d," state the total number of each item (e.g., consumer complaints, field reports, etc.) separately. Multiple incidents

involving the same vehicle are to be counted separately. Multiple reports of the same incident are also to be counted separately (i.e., a consumer complaint and a field report involving the same incident in which a crash occurred are to be counted as a crash report, a field report and a consumer complaint).

The number of each of the referenced items in 2.a, 2.b, and 2.f, received by Nissan, or of which Nissan is otherwise aware, which relate to, or may relate to, the subject condition in the subject vehicles, is contained in Attachment A. Multiple incidents involving the same vehicle have been counted separately. Multiple reports of the same incident have also been counted separately, so there are duplicate counts in several categories.

2.c - There was one consumer complaint that alleged injury from the lift gate closing, however the consumer was unable to recall where or when the incident happened and did not have any documentation of the alleged injury. The allegation was made in a vehicle repurchase issue.

There are no reports responsive to 2.d or 2.e.

3. Separately, for each item (complaint, report, claim, notice, or matter) within the scope of your response to Request No. 2, state the following information:
 - a. Nissan's file number or other identifier used;
 - b. The category of the item, as identified in Request No. 2 (i.e., consumer complaint, field report, etc.);
 - c. Vehicle owner or fleet name (and fleet contact person), address, and telephone number;
 - d. Vehicle's VIN;
 - e. Vehicle's make, model and model year;
 - f. Vehicle's mileage at time of incident;
 - g. Incident date;
 - h. Report or claim date;
 - i. Whether property damage is alleged;
 - j. Number of alleged injuries, if any;
 - k. Number of alleged fatalities, if any.

Provide the table in Microsoft Access 2000 or a compatible format, entitled "REQUEST NUMBER TWO DATA."

The information requested in 3.a through 3.k is provided, when known, in the following file: "REQUEST NUMBER TWO DATA.mdb", on a CD enclosed as Attachment A.

4. State, by model and model year, a total count for all of the following categories of claims, collectively, that have been paid by Nissan to date that relate to, or may relate to, the subject condition in the subject peer vehicles; warranty claims; extended warranty claims; claims for good will services that were provided; field, zone, or similar adjustments and reimbursements; and warranty claims or repairs made in accordance with a procedure specified in a technical service bulletin or customer satisfaction campaign.

Separately for each claim, state the following information:

- a. Nissan claim number;
- b. Vehicle owner or fleet name (and fleet contact person and telephone number);
- c. VIN;
- d. Repair date;
- e. Vehicle mileage at time of repair;
- f. Repairing dealer's or facility's name, telephone number, city and state or ZIP code;
- g. Labor operation number;
- h. Problem code;
- i. Replacement part number(s) and description(s);
- j. Concern stated by customer; and
- k. Comment, if any, by dealer/technician relating to claim and/or repair.

Provide this information in Microsoft Access 2000, or a compatible format, entitled "WARRANTY DATA."

The main purpose of the warranty system is to reimburse dealers for performing warranty repairs. Claims are submitted by dealers through an on-line computer system through the use of a set of codes. The codes are designed to allow flexibility for their use and, as such, do not supply a significant amount of information about why a particular repair was made, or specific details about the nature of the repair itself.

Within the limitations of our warranty system as it relates to the subject matter of this inquiry, the information requested in 4.a and 4.c through 4.k is provided, when known, in a file titled,

"WARRANTY DATA.mdb" on a CD enclosed in Attachment A. Owner information requested by item 4.b is not present in the warranty system.

The total number of warranty claims is 526 for the subject condition. There was a customer satisfaction campaign conducted on certain 2004 Quest vehicles. As part of the campaign, the lift gate strut ball mounts were replaced to eliminate a rattling noise condition. This service action generated the majority of the warranty claims, 38,854 total.

5. Describe in detail the search criteria used by Nissan to identify the claims identified in response to Request No. 4, including labor operations, problem codes, part numbers and any other pertinent parameters used. Provide a list of all labor operations, labor operation descriptions, problem codes, and problem code descriptions applicable to the subject condition in the subject peer vehicles. State, by make and model year, the terms of the new vehicle warranty coverage offered by Nissan on the subject peer vehicles (i.e., the number of months and mileage for which the coverage is provided and the vehicle systems that are covered). Describe any extended warranty coverage option(s) that Nissan offered for the subject peer vehicles and state by option, model, and model year, the number of vehicles that are covered under each such extended warranty.

The search criteria used by Nissan to identify the claims identified in response to Request No. 4 are described below:

Warranty claims data were gathered from Warranty database as of August 9, 2007.

PNC Codes

84532 = TORSION BAR/TAILGATE STAY

Word Search in Comments

The following keywords were searched to identify claims in which the wheel may have cracked: "STRUT," "REAR DOOR," "BACK DOOR," "HATCH," "TAIL GATE", "TAILGATE", "LIFT GATE," "LIFTGATE"

Labor Op Codes

UM14AA = RPL ALL T'LID/T'GATE STAYS/TORSION BARS/SPRINGS

Warranty and extended warranty coverage on subject peer vehicles is provided in Attachment B.

6. Describe the design and operation of the power lift gate feature in the subject peer vehicles including any built-in safety and failsafe features.

Power Lift Gate Design

From its introduction in 2004MY to present Nissan Quest models, the Power Lift Gate system is operated by an electric motor and control system with current sensing capability. The control system activates the motor to open the lift gate and actively monitors the current through the motor to determine if the lift gate struts are functioning as intended. A change in current as the lift gate is being opened indicates the struts are providing enough force to assist the motor in opening the lift gate. If the current change is not detected, upon reaching the full open position, the control system automatically activates a warning signal while continuing to power the motor as it performs a controlled closing of the lift gate to prevent an accidental drop of the lift gate. As an additional safety feature, even if the change in current is detected, the control system pulses the motor upon reaching the full open position to ensure the struts can sustain the lift gate. Unless confirmed, the control system automatically activates a warning signal and performs a controlled closing of the lift gate to prevent an accidental drop of the lift gate.

Nissan believes our power hatch lift gate is safe and is designed to help protect a user who may be present under the lift gate.

Power Lift Gate Operation

- The main ON/OFF switch is located in the overhead console.
- Push the switch ON to enable the rear pillar switch. An indicator light will illuminate when the switch is in the ON position.
- Push the switch OFF to disable the rear pillar switch. An indicator light will illuminate when the switch is in the OFF position.

Pushing the switch OFF while the lift gate is opening or closing will cancel the operation and the lift gate will go to manual mode.

- When the switch is in the OFF position, the lift gate can still be opened with the key fob or overhead console switch. The lift gate can also be opened manually with the outside handle if the lift gate is unlocked.

Operating the Power Lift Gate

NOTE: To open, close or reverse the power lift gate, the shift selector lever must be in P (Park). Also, the power lift gate will not operate if battery voltage is low.

Power Open:

The power lift gate automatically moves from the fully closed position to the fully open position in approximately 5-8 seconds. The power open feature can be activated by the switch on the key fob and the overhead console and by the outside opener handle. The hazard lights flash and a chime sounds to indicate the power open sequence has been started.

- The lift gate can be opened by the overhead console switch and the key fob even if the vehicle is locked. The lift gate will individually unlock and open. Once the lift gate is closed, its lock will align to the vehicle's lock or unlock status.
- The key fob button must be held for 0.5 second before the lift gate opens.
- The lift gate must be unlocked to open it with the outside opener handle
- The switch on the rear pillar cannot be used to open the lift gate.

A warning chime will sound if the shift selector lever is moved out of P (Park) during a power open operation.

Power Close:

The power lift gate automatically moves from the fully open position to the secondary position. When the lift gate reaches the secondary position, the cinching motor engages and pulls the lift gate to its primary latch position. Power close takes approximately 7-10 seconds. The power close feature can be activated by the switch on the key fob, the overhead console and the rear pillar. The hazard lights flash and a chime sounds to indicate the power close sequence has been started.

- If the outside opener handle is activated while the cinching motor is engaged, the cinching motor will disengage and release the latch.
- The key fob button must be held for 0.5 second before the lift gate closes.
- The switch on the rear pillar can only be used to close the lift gate if the main ON/OFF switch is ON.

Reverse:

The power lift gate will reverse direction immediately during power open or power close if the key fob, overhead console or rear pillar switch is pressed. A chime will sound to announce the reversal.

Auto Reverse:

If an obstacle is detected during power open or power close, a warning chime will sound and the lift gate will reverse direction and return to the full open or full close position. If a second obstacle is detected, the lift gate motion will stop and the drive motor will disengage. The lift gate will enter manual mode.

A pinch strip is mounted on each side of the lift gate. If an obstacle is detected by a pinch strip during power close, the lift gate will reverse direction and return to the full open position.

NOTE:

If the pinch strip is damaged or removed, the power close function will not operate.

Manual Mode:

If power operation is not available, the lift gate may be operated manually. Power operation may not be available if the main ON/OFF switch is in the OFF position, if multiple obstacles have been detected in a single power cycle, or if battery voltage is low.

Safe Mode:

If the lift gate gas stays lose pressure, the power lift gate safe mode is activated. When the safe mode is activated, the lift gate slowly closes. A continuous warning chime sounds until the lift gate is in the fully down position. Then the lift gate will be pulled to the closed and latched position by a motor.

The power lift gate cannot be opened using the switches at any time in the safe mode.

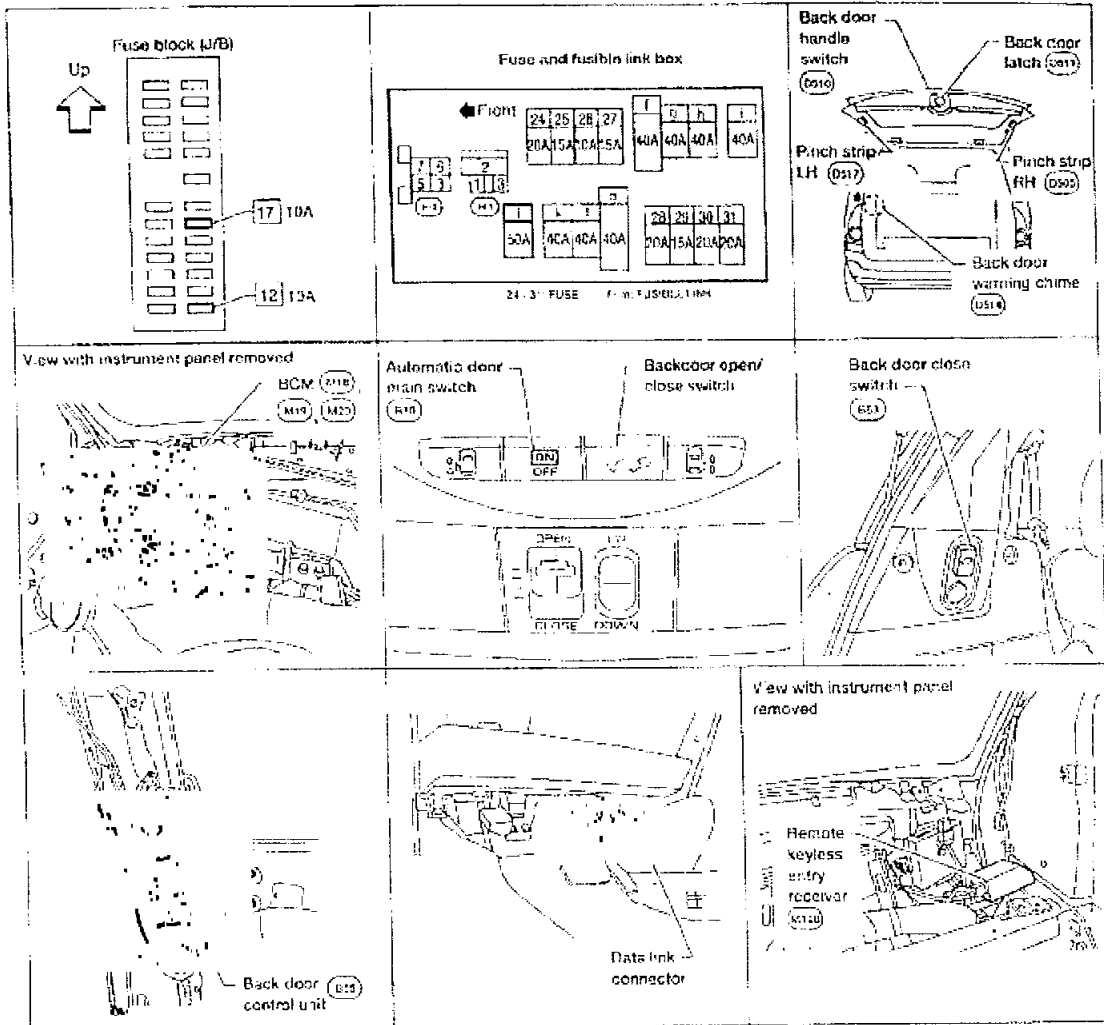
The auto reverse function remains active while the lift gate is closing in the safe mode.

The lift gate should not be operated again until it is checked by a Nissan dealer.

Design of the Power Lift Gate

AUTOMATIC BACK DOOR SYSTEM

Component Parts and Harness Connector Location



System Description

The automatic back door system consists of a one piece unit that combines the back door control unit along with the back door motor, back door clutch and the back door encoder. The back door latch contains a lock function that can control the two functions of automatic back door latch closure and electrical opener with a single motor when the back door is closed to the halfway state.

- **Back door auto closure**
When the back door is closed to the half-way state (half-latch) position, the motor drives to rotate the latch lever and pull it in from half latched to full latched and automatically close the door.
- **Power back door**
With the back door closed, press the automatic door main switch or press the remote keyless entry button, or pull the back door handle with the back door unlocked, the back door latch motor drives the open the locking plate and releases the latch. The back door motor then raises the door to the full open position.
With the back door open, press the automatic door main switch, remote keyless entry button or the back door close switch, the back door motor closes the door to the half-latch state. The back door latch motor then drives the latch to the full close position.

On an open or close signal, the hazard lamps will flash 3 times and the warning chime will sound 3 dings lasting a total of 2 seconds.

OPERATION DESCRIPTION

Automatic Door Main Switch Operation (Fully Closed → Fully Open Operation)

- When the automatic door main switch is pressed, back door control unit terminal 23 receives the signal.
- The back door control unit checks the automatic transaxle select lever (A/T device) position through terminal 18, vehicle speed through terminal 21 and battery voltage.
- When the back door control unit receives the signal, if the auto back door operating enable conditions are met, it sends a signal through terminal 6 and grounds terminal 9 to sound the warning chime, sends a signal to the BCM through terminal 4 to flash the hazard lamps and sends the unlock signal to the back door latch.
- When the back door latch receives the signal, it supplies voltage from terminal 12 to operate the release actuator and releases the door lock.
- The back door control unit supplies power to the magnetic clutch and the back door motor and moves the back door in the open direction. (At this time, it also executes speed control, input reverse, and overload reverse control.)
- When the back door is opened to the full-open position, the full-open position is detected by the encoder, and the back door control unit switches the back door motor OFF and the magnetic clutch is pulsed and then turned OFF.
- The back door is held in the fully open position by the gas struts.

Remote Keyless Entry Operation (Fully Closed → Fully Open Operation)

- When the remote keyless entry button is pressed for at least 0.5 seconds, back door control unit terminal 21 receives the signal.
- The back door control unit checks the automatic transaxle select lever (A/T device) position through terminal 18, vehicle speed through terminal 21 and battery voltage.
- When the back door control unit receives the signal, if the auto back door operating enable conditions are met, it sends a signal through terminal 6 and grounds terminal 9 to sound the warning chime, sends a signal to the BCM through terminal 4 to flash the hazard lamps and sends the unlock signal to the back door latch.
- When the back door latch receives the signal, it supplies voltage from terminal 12 to operate the release actuator and releases the door lock.
- The back door control unit supplies power to the magnetic clutch and the back door motor and moves the back door in the open direction. (At this time, it also executes speed control, input reverse, and overload reverse control.)
- When the back door is opened to the full-open position, the full-open position is detected by the encoder, and the back door control unit switches the back door motor OFF and the magnetic clutch is pulsed and then turned OFF.
- The back door is held in the fully open position by the gas struts.

Back Door Handle Switch Operation (Fully Closed → Fully Open Operation)

- When the back door is unlocked and the back door handle is pulled, back door control unit terminal 26 receives the signal.
- The back door control unit checks the automatic transaxle select lever (A/T device) position through terminal 18, vehicle speed through terminal 21 and battery voltage and automatic door main switch position through terminal 13.
- When the back door control unit receives the signal, if the auto back door operating enable conditions are met, it sends a signal through terminal 6 and grounds terminal 9 to sound the warning chime, sends a signal to the BCM through terminal 4 to flash the hazard lamps and sends the unlock signal to the back door latch.
- When the back door latch receives the signal, it supplies voltage from terminal 12 to operate the release actuator and releases the door lock.
- The back door control unit supplies power to the magnetic clutch and the back door motor and moves the back door in the open direction. (At this time, it also executes speed control, input reverse, and overload reverse control.)

- When the back door is opened to the full-open position, the full-open position is detected by the encoder, and the back door control unit switches the back door motor OFF and the magnetic clutch is pulsed and then turned OFF.
- The back door is held in the fully open position by the gas stays.

Automatic Door Main Switch Operation (Fully Open → Fully Closed Operation)

- When the automatic door main switch is pressed, the back door control unit terminal 23 receives the signal.
- The back door control unit checks battery voltage.
- When the back door control unit receives the signal, if the auto back door operating enable conditions are met, it sends a signal through terminal 6 and grounds terminal 9 to sound the warning chime and sends a signal to the BCM through terminal 4 to flash the hazard lamps.
- The back door control unit supplies power to the magnetic clutch and the back door motor and move the back door in the close direction. (At this time, it also executes speed control, input reverse, and overload reverse control.)
- When the back door reaches the half-latch state, the half-latch switch detects this and the signal is sent to the back door control unit terminal 22.
- When the back door control unit receives the signal, it switches OFF the back door motor and the magnetic clutch.
- When the cinch latch motor operates and the close switch detects this and the back door control unit terminal 14 receives the signal from back door latch terminal 5.
- When the back door latch operates and full close is detected through terminal 14 of the back door control unit, the back door auto closure operation ends and the door is fully closed.

Remote Keyless Entry Operation (Fully Open → Fully Closed Operation)

- When the remote keyless entry switch is pressed for at least 0.5 seconds, the back door control unit terminal 21 receives the signal.
- The back door control unit checks battery voltage.
- When the back door control unit receives the signal, if the auto back door operating enable conditions are met, it sends a signal through terminal 6 and grounds terminal 9 to sound the warning chime and sends a signal to the BCM through terminal 4 to flash the hazard lamps.
- The back door control unit supplies power to the magnetic clutch and the back door motor and move the back door in the close direction. (At this time, it also executes speed control, input reverse, and overload reverse control.)
- When the back door reaches the half-latch state, the half-latch switch detects this and the signal is sent to the back door control unit terminal 22.
- When the back door control unit receives the signal, it switches OFF the back door motor and the magnetic clutch.
- When the cinch latch motor operates and the close switch detects this and the back door control unit terminal 14 receives the signal from back door latch terminal 5.
- When the back door latch operates and full close is detected through terminal 14 of the back door control unit, the back door auto closure operation ends and the door is fully closed.

Back Door Close Switch Operation (Fully Open → Fully Closed Operation)

- When the back door close switch is pressed with the automatic main door switch ON, the back door control unit terminal 8 receives the signal.
- The back door control unit checks battery voltage.
- When the back door control unit receives the signal, if the auto back door operating enable conditions are met, it sends a signal through terminal 6 and grounds terminal 9 to sound the warning chime and sends a signal to the BCM through terminal 4 to flash the hazard lamps.
- The back door control unit supplies power to the magnetic clutch and the back door motor and move the back door in the close direction. (At this time, it also executes speed control, input reverse, and overload reverse control.)
- When the back door reaches the half-latch state, the half-latch switch detects this and the signal is sent to the back door control unit terminal 22.

- When the back door control unit receives the signal, it switches OFF the back door motor and the magnetic clutch.
- When the cinch latch motor operates and the close switch detects this and the back door control unit terminal 14 receives the signal from back door latch terminal 5.
- When the back door latch operates and full close is detected through terminal 14 of the back door control unit, the back door auto closure operation ends and the door is fully closed.

Anti-Pinch Function

- During auto operation, if an object is detected in the door's path, the back door operates in the reverse direction to prevent pinching.
- During auto close operation, if an object is detected by the pinch strips in the door's path, the back door operates in the open direction until it is fully open.
- During auto cinch latch operation, if an object is detected by the pinch strips in the door's path, the back door operates depending on the automatic door main switch position. If the automatic door main switch is in the ON position, the back door operates in the open direction until it is fully open. If the automatic door main switch is in the OFF position, the back door will reverse only until the latch is fully released.

Gas Stay Check

- During each power open operation, the back door control unit monitors motor current draw to determine if the gas stays are functioning properly.
- If a failure of the gas stays is detected, the back door control unit will close the back door while sounding the warning chime.

Warning Functions

- The warning chime is sounded according to the back door operating state, operations, and conditions.

Auto Back Door Operation Enable Conditions

| Operation | Automatic door main switch | | Remote keyless entry | | Back door handle switch | | Back door close switch | |
|------------------------|---|---------------------|---|---------------------|---|---------------------|--|---------------------|
| | Fully closed → open | Fully open → closed | Fully closed → open | Fully open → closed | Fully closed → open | Fully open → closed | Fully closed → open | Fully open → closed |
| Main switch | ON | | | | | | | |
| Vehicle stop condition | A/T selector lever in P position and vehicle speed less than 2 km/h | | A/T selector lever in P position and vehicle speed less than 2 km/h | | A/T selector lever in P position and vehicle speed less than 2 km/h | | | |
| Battery voltage | Approx. 11V or more | | | | | | Approx. 11V (operates with warning chime for low voltage of 9 - 11V) | |

Control When Handle Pulled When Operating Enable Conditions Not Yet Met

| Items | Operation condition | Not met case | Control |
|-------------------------------|---------------------|--------------------------------|---|
| Main switch | ON | OFF | Manual mode (after finishing open/close operation if active) |
| A/T selector lever P position | P position | Other than P position | Power close operation only |
| Voltage drop | 11V or more | $11 > V > 9$ | Power operation will continue but will not begin from full close position |
| | | $9 > V > \text{reset voltage}$ | Power operation will stop and warning chime will sound |
| | | reset voltage $> V$ | No power function available |
| Handle switch | Normal | Error | No operation |

Control When Operating Enable Conditions No Longer Met

| Description | Operation | Full open stop |
|--|---|--|
| Main switch turned OFF | Warning chime active → Shift to manual mode after full open or close operation is complete (Recovery to power mode when main switch turned ON or door fully close) | → Shift to manual mode |
| A/T selector lever P position | Warning chime active and one-way operation continuous (Warning chime inactive and door fully open or fully closed or operating conditions recovered) | Stop continued |
| Voltage drop $11 > 9V$ | One-way operation continued (equivalent to the case of starting voltage $\leftarrow 11V$ for handle operation with warning chime active) | Not allowed |
| Voltage drop $6 < 4V$ (Microcomputer reset voltage = clutch hold voltage) | <ul style="list-style-type: none"> Motor stopped Control not possible because microcomputer being reset | Control not possible because microcomputer being reset |

Warning Chime Active Conditions

The warning chime uses two types of audio warnings, a friendly chime and a warning chime. The friendly chime consists of dings lasting 0.56 seconds each immediately followed by the next ding. The warning chime consists of beeps lasting 0.33 seconds with a pause of 0.33 seconds between each beep.

| Operation status | Operation or conditions | Warning chime pattern |
|--------------------------------------|--|--|
| When auto operation starts | Automatic door main switch operation | Friendly chime 2 seconds, 3 dings |
| | Back door handle switch operation | |
| | Back door close switch operation | |
| When reverse operation starts | When reverse request is detected from automatic door main switch, remote keyless entry or back door close switch | Friendly chime 1.3 seconds, 2 dings |
| | When obstacle is detected | Warning chime 2 seconds, 3 beeps |
| Operating at low voltage | When operating with handle | Warning chime 2 seconds, 3 beeps |
| A/T selector lever not in P position | Back door close operation | Friendly chime Continuous dings |
| | Back door open operation | Warning chime Continuous beeps |

ATTACHMENT A

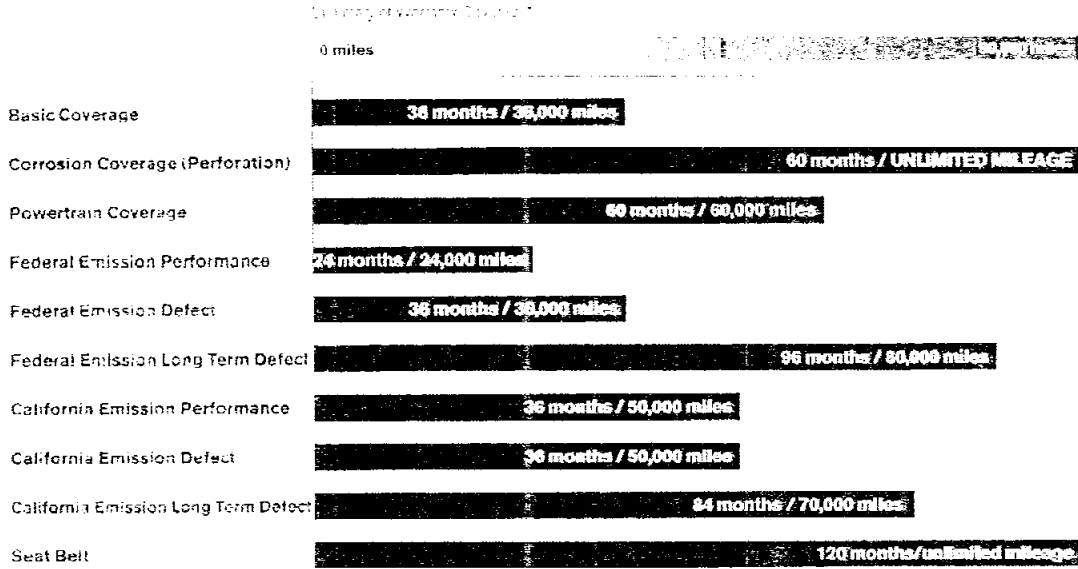
CD with Vehicle sales information

This attachment contains a CD containing the information related to Request Numbers 1, 2, 3 and 4. The information was obtained from the Consumer Affairs database, the Tech Line Database, and the field reports database as of August 16, 2007. Legal Department Files were searched on August 20, 2007. The databases and Legal Files are updated daily.

ATTACHMENT B

Warranty information

WARRANTY COVERAGE AT A GLANCE



FEDERAL VEHICLE EMISSION CONTROL LIMITED WARRANTIES

9

Agency, Ariel Rios Building (6405H), 1200 Pennsylvania Avenue, N.W., Washington, D.C. 20460

service
is

main-
e con-
sidered

these
ed in
let. In
y also
Trans-
liance
ection

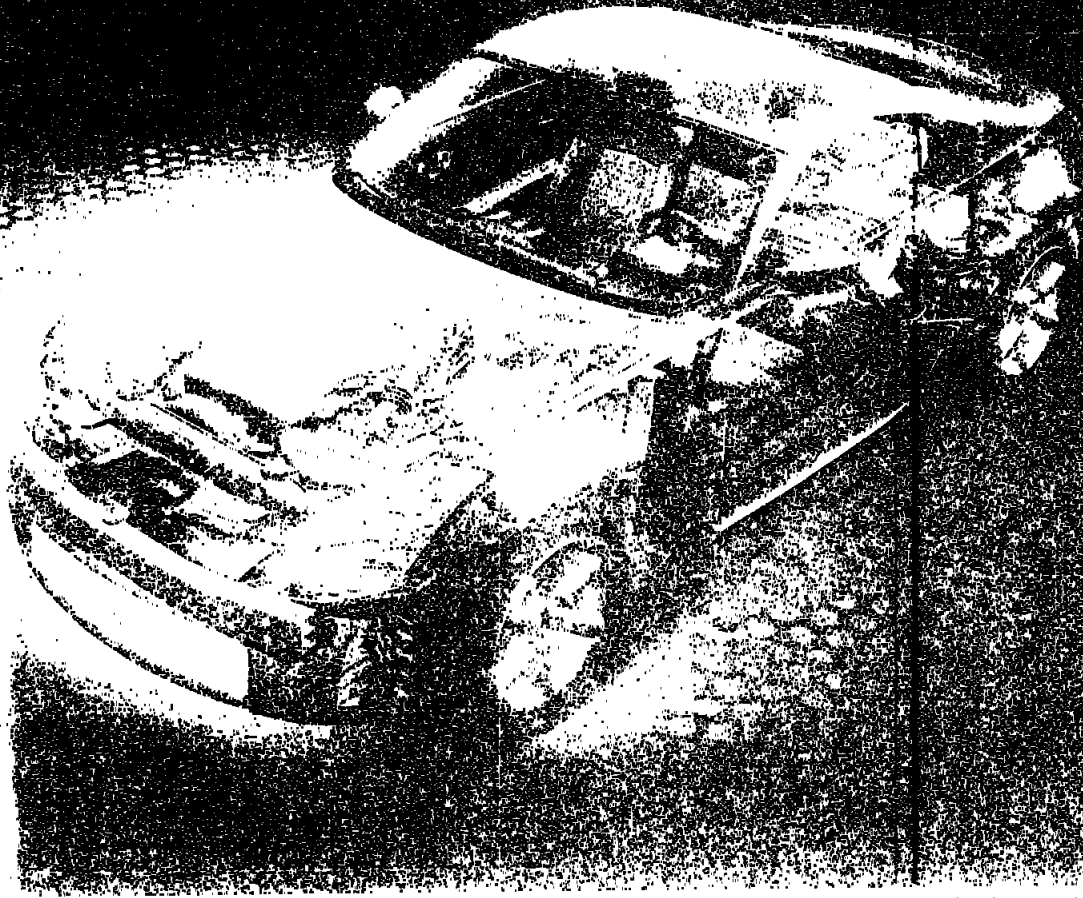
WARRANTY PARTS LIST

- * Fuel injection system
- Engine control module/onboard diagnostic device
- * Oxygen sensor(s)
- * Mass air flow sensor
- * Intake manifold
- * Throttle body
- Catalytic converter(s)
- * Exhaust manifold(s)
- * Exhaust tube from manifold to catalytic converter
- * Distributor or camshaft position sensor(s)
- * Crankshaft position sensor(s)
- * Spark plugs, ignition coil and wires
- * Ignition control module
- * Evaporative emission control system
- * Fuel filler neck restrictor and check valve
- * Fuel tank and filler cap
- * Idle air control system
- * Supercharger
- * Positive crankcase ventilation system
- * Exhaust gas recirculation (EGR) control system
- * Purged secondary air injection system and valves
- * Hoses, clamps, fittings, tubing, sealing gaskets or devices and mounting hardware used in above systems
- * Vacuum and temperature sensitive valves and switches used in above systems
- * Electronic sensors and controls used in above systems

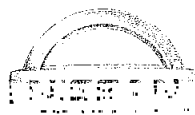
The Emission Performance or Defect Warranty may be subject to future governmental administrative action. Nissan reserves the right to change the terms of the warranty to be consistent with these actions. See your dealer for information regarding possible changes.

Security+Plus[®]

VEHICLE PROTECTION PLAN



Component
Coverage
Guide





NISSAN SECURITY+PLUS

THE BEST PROTECTION FOR YOUR NISSAN

Nissan's Security+Plus Vehicle Protection Plan provides you with quality long-term mechanical protection and extra peace of mind.

It covers the most important components of your Nissan vehicle: Engine, Transmission, Steering, Drive Axle Assembly, Electrical, and many more. Repairs to these parts can run as high as \$4,000 or more. But with Security+Plus, if a covered part fails, Nissan pays...not you.

This guide lists the covered components for the Gold Plan, by major category, in Nissan part number code (PNC) numeric sequence. For complete information regarding other coverage features, and those excluded from coverage, contact your Nissan Dealer.

Unlike other service agreements, Security+Plus is exclusively for Nissan owners, and **backed by Nissan North America, Inc.***

NISSAN SECURITY+PLUS: THE SMART CHOICE™

Nissan's Security+Plus Vehicle Protection Plan is designed for new and previously-owned Nissan vehicles—by Nissan—and offers Nissan owners:

Cost-effective coverage up to 7 years, or 100,000 miles, to protect your investment. Guards against loss from the escalating cost of major repairs (including parts and labor).

Nationwide Nissan repair at Authorized Nissan dealerships by Nissan-trained technicians. No payment hassles because the dealer is paid directly by Nissan.

Customer Assistance available throughout the United States. Just contact your nearest Nissan dealer, or call us at 1-800-NISSAN-1.

Optional terms of coverage (years and miles) to fit your driving needs, and an optional zero or \$50 deductible for each eligible component repair.

Transfer Security+Plus to a new owner if you sell your Nissan before coverage expires.**

Convenient and economical coverage, costing only pennies a day. Your Nissan dealer will be happy to explain the various financing options available to you.

The cost of **Genuine Nissan replacement parts** is included for covered repairs—not inferior substitutes.

* In Florida, Security+Plus is backed by Nissan Extended Service Corporation, Inc., P.O. Box 191, Gardena, California 90248-0191. License #60062.

** A nominal transfer fee may apply. For details, please refer to the Security+Plus Service Agreement or contact your local Nissan dealer.

| | |
|---|---|
| ENGINE | 2 |
| ENGINE & INTERNAL PARTS | 2 |
| LUBRICATION & COOLING | 2 |
| FUEL SYSTEM | 2 |
| MANIFOLDS & TURBOCHARGER | 3 |
| ENGINE ELECTRICAL | 3 |
| FUEL INJECTION | 3 |
| EMISSION CONTROLS | 3 |
| POWER TRAIN | 3 |
| PROPELLER SHAFTS & DIFFERENTIAL | 3 |
| CANTON, TRANSMISSION, TRANSAXLE & TRANSFER CASE | 3 |
| STEERING, SUSPENSION, DRUMS | 6 |
| STEERING SYSTEM | 6 |
| AXLE & SUSPENSION | 6 |
| DRUMS | 6 |
| ELECTRICAL | 6 |
| BODY ELECTRICAL | 6 |
| HEATING & AIR CONDITIONING | 7 |
| BODY & INTERIOR COMPONENTS | 7 |
| FRONT | 7 |
| INTERIOR | 8 |
| WHEELS/TIRES | 8 |
| WINDSHIELD/WINDSHIELD TRIM | 8 |
| WINDSHIELD CONVERTIBLE TOP | 8 |

INDEX

| COMPONENT | PAGE |
|-----------------------------------|-------|
| CYLINDER BLOCK | 11010 |
| CYLINDER BLOCK WELSH PLUG | 11021 |
| CYLINDER HEAD | 11041 |
| CYLINDER HEAD GASKET | 11044 |
| CYLINDER HEAD COVER | 11046 |
| CYLINDER HEAD WELSH PLUG | 11051 |
| CYLINDER HEAD BOLT | 11056 |
| INTAKE VALVE SEAT | 11088 |
| EXHAUST VALVE SEAT | 11089 |
| OIL PAN | 11110 |
| OIL PAN GASKET | 11121 |
| OIL PAN DRAIN PLUG | 11122 |
| DIPSTICK | 11140 |
| FRONT ENGINE MOUNT | 11220 |
| MOUNT - TRANSMISSION LOWER | 11221 |
| FRONT MOUNT BRACKET | 11232 |
| CENTER MEMBER | 11240 |
| ENGINE DAMPER ASSY | 11248 |
| GUSSET | 11267 |
| ENGINE MOUNT ACTUATOR ASSY | 11273 |
| ENGINE MOUNT DAMPER | 11292 |
| REAR ENGINE MOUNT | 11320 |
| ROLL DAMPER ENGINE MOUNT | 11325 |
| REAR MOUNT BRACKET | 11340 |
| BUFFER | 11390 |
| TIMING BELT | 11721 |
| SERPENTINE BELT TENSIONER ASSY | 11750 |
| SERPENTINE BELT TENSIONER BRACKET | 11757 |
| PISTON & PIN SET | 12010 |
| PISTON RINGS | 12050 |
| CONNECTING ROD & CAP SET | 12100 |
| CONNECTING ROD BEARINGS | 12111 |
| PISTON ORJET | 12121 |
| CRANKSHAFT | 12200 |
| MAIN BEARINGS | 12205 |
| REAR MAIN SEAL | 12270 |
| CRANKSHAFT PULLEY | 12300 |
| PULLEY BOLT | 12309 |
| BEARINGS | 12310 |
| CRANKSHAFT | 12321 |
| CRANKSHAFT PUSHING ROD | 12322 |
| DRIVE GEAR | 12330 |
| FUEL PUMP CAM | 12335 |
| CRANKSHAFT GEAR | 12336 |
| CRANKSHAFT GEAR | 12337 |
| CRANKSHAFT PROCKET | 12338 |
| SPROCKET ASSY - VTC | 12339 |
| TIMING CHAIN | 12340 |
| FRONT COVER | 12350 |
| CRANKSHAFT FRONT OIL SEAL | 12351 |
| CRANKSHAFT OIL SEAL | 12352 |
| COVER GASKET | 12353 |
| WATER WET | 12354 |
| WATER GUIDE | 12355 |
| CHAIN TENSIONER | 12356 |
| TIMING CHAIN COVER | 12357 |
| CHAIN TENSIONER STOP WIPER | 12358 |
| JACK SHAFT | 12359 |
| JACK SHAFT OIL SEAL | 12360 |
| JACK SHAFT GEAR | 12361 |
| INTAKE VALVE | 12362 |
| EXHAUST VALVE | 12363 |
| VALVE SPRING | 12364 |
| VALVE SPRING SEAT | 12365 |
| VALVE OIL SEAL | 12366 |
| VALVE SPRING RETAINER | 12367 |
| VALVE GUIDE | 12368 |
| VALVE LIFTER | 12369 |
| VALVE PILOT (ENGINE) | 12370 |
| ROCKER SHAFT | 12371 |
| VALVE ROCKER SHAFT SPRING | 12372 |
| VALVE ROCKER ARM | 12373 |
| VALVE ROCKER COVER | 12374 |
| ROCKER COVER GASKET | 12375 |
| TIMING CHAIN REAR COVER | 12376 |
| FRONT COVER GASKET | 12377 |
| DUST COVER | 12378 |
| ESR PASSAGE | 14711 |
| FRONT COVER O-RING | 16066 |
| OIL PUMP DRIVE GEAR | 16043 |
| OIL STRAINER | 16050 |
| DIPSTICK TUBE | 16155 |
| OIL FILLER CAP | 16255 |
| COVER PLATE GASKET | 16420 |
| BELT TENSIONER | 16805 |
| VTC SOLENOID ASSY | 23758 |

| COMPONENT | PAGE |
|-------------------------------|-------|
| WATER OUTLET | 11080 |
| THERMOSTAT HOUSING | 11091 |
| WATER OUTLET GASKET | 11092 |
| CYLINDER BLOCK WATER OUTLET | 11093 |
| THERMOSTAT HOUSING GASKET | 11094 |
| AIR GUIDE | 11336 |
| WATER CONNECTOR | 14084 |
| OIL PUMP | 16010 |
| OIL PUMP GASKET | 16025 |
| OIL PUMP DRIVE SPINDLE | 16040 |
| OIL PUMP REGULATOR VALVE | 16132 |
| OIL FILTER BRACKET | 16236 |
| FILTER BRACKET GASKET | 16239 |
| OIL FILTER RELIEF VALVE | 16241 |
| OIL FILTER REGULATOR VALVE | 16300 |
| WATER PUMP | 21010 |
| WATER PUMP HOUSING AND GASKET | 21012 |
| WATER PUMP GASKET | 21014 |
| WATER PUMP/FAN PULLEY | 21051 |
| FAN BLADE | 21060 |
| FAN COUPLING ASSY | 21082 |
| THERMOSTAT | 21200 |
| OIL COOLER PIPE | 21300 |
| OIL COOLER FIN TYPE | 21305 |
| OIL COOLER RADIATOR TYPE | 21306 |
| OIL COOLER PROTECTOR | 21307 |
| OIL COOLER GASKET | 21310 |
| PT-OIL COOLER HOSE | 21365 |
| RADIATOR | 21400 |
| RADIATOR CAP | 21436 |
| RADIATOR SHROUD | 21475 |
| RADIATOR DRAIN COCK | 21480 |
| INJECTOR BLOWER MOTOR | 21480 |
| BLOWER MOTOR INLET | 21495 |
| BLOWER MOTOR BRACKET | 21497 |
| BLOWER MOTOR CLAMP | 21498 |
| BLOWER MOTOR AIR DUCT | 21499 |
| RESERVOIR TANK | 21510 |
| RESERVOIR TANK BRACKET | 21511 |
| THERMO SWITCH | 21695 |
| RADIATOR FAN MOTOR | 21697 |
| AIR OIL COOLER ASSY | 21699 |
| OIL COOLER PIPING | 21699 |
| COOLANT TEMP SENSOR | 25086 |
| RADIATOR FAN RELAY | 25212 |
| OIL PRESSURE SENDING UNIT | 25240 |
| OIL PRESSURE SWITCH | 25244 |
| BLOWER MOTOR TIMER | 26012 |
| BOOST CONTROL VALVE | 14926 |
| THURGE CONTROL VALVE ASSY | 14930 |
| VALVE-EVAPORATOR PURGE VOLSOL | 14932 |
| RESONATOR - EVAP PURGE | 14937 |
| VAPOR CANISTER ASSY | 14949 |
| CARBON CANISTER | 14950 |
| EPC VALVE | 14953 |
| CARBURETOR | 16010 |
| CHOKT CHAMBER | 16011 |
| JET/AIR BLEEDS | 16025 |
| ALTITUDE COMPENSATION | 16044 |
| POWER VALVE | 16058 |
| FLOAT | 16061 |
| NEEDLE VALVE | 16101 |
| AIR-FUEL RATIO SOLENOID | 16102 |
| ENRICHMENT SOLENOID | 16103 |
| FUEL CONNECTOR | 16111 |
| THROTTLE CHAMBER | 16118 |
| CARBURETOR LINKAGE | 16134 |
| ACCELERATOR PUMP | 16150 |
| THROTTLE RETURN SPRING | 16180 |
| MIXTURE HEATER INSULATOR | 16174 |
| DASH POT | 16182 |
| THROTTLE POSITIONER | 16183 |
| IDLE SPEED CONTROL | 16260 |
| SERVO DIAPHRAGM | 16262 |
| DIAPHRAGM CHAMBER | 16315 |
| THROTTLE CONTROL DIAPHRAGM | 16315 |
| IDLE COMPENSATOR | 16331 |
| ACCELERATOR TERMINAL | 16361 |
| FLOAT CHAMBER GASKET | 16455 |
| AIR CLEANER ASSY | 16500 |
| VACUUM MOTOR ASSY | 16510 |
| IDLE COMPENSATOR TUBE | 16520 |
| AIR CLEANER INSULATOR | 16523 |
| HOT AIR DUCT | 16530 |

| COMPONENT | PAGE |
|------------------------------------|-------|
| AIR DUCT ASSY | 16577 |
| AIR TEMP SENSOR | 16590 |
| RESONATOR | 16595 |
| EXHAUST MANIFOLD COVER | 16590 |
| FUEL PUMP CONTROL UNIT | 17001 |
| FUEL PUMP | 17010 |
| ELECTRIC FUEL PUMP | 17012 |
| FUEL PUMP CHECK VALVE | 17014 |
| FUEL PUMP GASKET | 17039 |
| FUEL CONNECTOR | 17103 |
| FUEL TANK | 17201 |
| TUBE ASSY FILLER | 17220 |
| FUEL FILLER NECK | 17222 |
| FUEL FILLER CAP | 17251 |
| FUEL HOSE PROTECTOR | 17271 |
| FUEL TANK PROTECTOR | 17285 |
| FUEL TANK DRAIN PLUG | 17310 |
| FUEL CHECK VALVE | 17330 |
| O-RING | 17342 |
| BREATHER VALVE | 17368 |
| EVAPORATOR SHUT-OFF VALVE | 17371 |
| VACUUM CUT VALVE | 17372 |
| FUEL OUTLET TUBE | 17501 |
| VAPOR VENT LINE | 17508 |
| FUEL RETURN TUBE | 17510 |
| FRONT FUEL TUBE | 17520 |
| ACCELERATOR ARM | 18010 |
| ACCELERATOR BRACKET | 18021 |
| PEDAL STOPPER BRACKET | 18050 |
| ACCELERATOR WIRE | 18150 |
| RETURN SPRING | 19215 |
| TOXION SHAFT ASSY | 19300 |
| SHAFT SUPPORT | 19314 |
| WATER TEMP SWITCH | 22121 |
| MIXTURE HEATING RELAY | 22122 |
| WATER TEMP SENSOR | 22820 |
| FUEL DAMPER | 22875 |
| ECC MAIN RELAY | 22886 |
| DROPPING RESISTOR | 22906 |
| ECC CONTROL UNIT | 23710 |
| CRANKSHAFT POS. SENSOR (GET) P.S. | 23721 |
| CRANKSHAFT POS. SENSOR (RE) P.S. | 23732 |
| VACUUM CONTROL MODULATOR | 23771 |
| FUEL TANK SENSOR | 25006 |
| VACUUM SENSOR | 25006 |
| FUEL CUT OFF SWITCH | 25144 |
| AUTO-CHOKE RELAY | 25235 |
| FRESH AIR DUCT | 25260 |
| INTAKE MANIFOLD | 14001 |
| EXHAUST MANIFOLD | 14002 |
| CAP BOLT/STUD | 14002 |
| LOWER MANIFOLD COLLECTOR | 14011 |
| MANIFOLD TUBE | 14012 |
| MANIFOLD COLLECTOR | 14013 |
| INTAKE MANIFOLD SUPPORT | 14016 |
| LOWER COLLECTOR GASKET | 14023 |
| MANIFOLD GASKET | 14036 |
| WATER INLET PIPE | 14053 |
| COLLECTOR GASKET | 14080 |
| EXHAUST MANIFOLD COVER | 14091 |
| HEAT SHROUD | 14096 |
| TURBOCHARGER | 14411 |
| TURBOCHARGER GASKET | 14415 |
| EXHAUST OUTLET | 14440 |
| EXHAUST OUTLET COVER | 14441 |
| GASKET | 14442 |
| HEAT INSULATOR | 14450 |
| INLET TUBE | 14460 |
| INLET TUBE GASKET | 14465 |
| EMERGENCY RELIEF VALVE | 14466 |
| RE-CIRCULATION VALVE | 14493 |
| INTERCOOLER ASSY | 14496 |
| WATERPIPE, OUTLET | 14498 |
| WATER PIPE, INLET | 14499 |
| MANIFOLD CONNECTOR | 14875 |
| OIL INLET TUBE | 15192 |
| CONNECTOR & GASKET | 15194 |
| OIL OUTLET TUBE | 15197 |
| FRONT EXHAUST GASKET | 20711 |
| CONVERTER GASKET | 20712 |
| INTAKE MANIFOLD CONNECTOR & O-RING | 21048 |
| BOOST SENSOR | 22360 |
| EXHAUST GAS SENSOR | 22680 |
| OIL TEMP SENSOR | 25075 |

ENGINE/POWER TRAIN

| COMPONENT | P.M.C. |
|------------------------------|--------|
| FLOOR INSULATOR | 74661 |
| ALTERNATOR BRACKET | 11710 |
| ALTERNATOR ADJUSTING BAR | 11718 |
| THERMO ELEMENT KIT | 16391 |
| TRANSISTOR IGNITION UNIT | 22020 |
| TRANSISTOR (TRIG) UNIT | 22022 |
| DISTRIBUTOR | 22100 |
| SHAFT | 22108 |
| RELUCTOR | 22115 |
| GOVERNOR WEIGHT | 22122 |
| DISTRIBUTOR PINION | 22129 |
| DISTRIBUTOR CAM | 22132 |
| ROTOR HEAD | 22152 |
| MAGNET | 22158 |
| HARNESS | 22159 |
| DISTRIBUTOR CAP | 22163 |
| STATOR | 22163 |
| DISTRIBUTOR PROTECTOR | 22172 |
| VACUUM CONTROL | 22301 |
| IGNITION COIL/PWR TRANSISTOR | 22432 |
| HIGH TENSION CABLE | 22450 |
| RESISTOR | 22460 |
| IGNITION COIL PROTECTOR | 22465 |
| AIR CUT VALVE | 22622 |
| ALTERNATOR | 23100 |
| ALTERNATOR ROTOP | 23105 |
| ALTERNATOR BEARING | 23127 |
| ALTERNATOR BRUSH & HOLDER | 23133 |
| ALTERNATOR PULLEY | 23151 |
| VOLTAJE REGULATOR | 23215 |
| DIODE SET | 23230 |
| STARTER MOTOR ASSY | 23301 |
| FIELD COIL | 23305 |
| ARMATURE | 23310 |
| CLUTCH FINCH | 23312 |
| REDUCTION GEAR | 23318 |
| STARTER SOLENOID | 23343 |
| BRUSH | 23351 |
| BATTERY CABLE | 24110 |
| BATTERY FRAME/RAVROL | 24426 |

| | |
|---------------------------------|-------|
| POWER VALVE ASSY | 14240 |
| POWER VALVE SOLENOID VALVE ASSY | 14517 |
| POWER VALVE SOLENOID | 14521 |
| E.P.C. VALVE | 14959 |
| FUEL INJECTOR CONTROL | 14960 |
| ELECTRO INJECTION UNIT | 16012 |
| VENTURI CHAMBER | 16015 |
| ALTITUDE SWITCH | 16044 |
| THROTTLE CHAMBER | 16116 |
| THROTTLE LINKAGE | 16136 |
| MIXTURE HEATER | 16172 |
| DASH POT | 16181 |
| FUEL SOLENOID VALVE | 16197 |
| I.A.S. UNIT | 16250 |
| WAX HOLDER | 16394 |
| COLD START VALVE | 16601 |
| FUEL INJECTOR | 16679 |
| INJECTOR | 16694 |
| FUEL PUMP CONTROL MODULE | 17091 |
| THROTTLE CHAMBER | 17118 |
| E.O.D. ASSY | 17492 |
| DETONATION SENSOR | 22630 |
| VACUUM TANK | 22632 |
| VACUUM SWITCH | 22681 |
| CONTROL UNIT (ECU) | 22684 |
| CONTROL UNIT (EFI) | 22811 |
| THROTTLE VALVE SWITCH | 22820 |
| WATER TEMP SENSOR | 22830 |
| AIR TEMPERATURE SENSOR | 22831 |
| CYLINDER HEAD TEMP SENSOR | 22832 |
| THERMISTIVE SWITCH | 22835 |
| AIR REGULATOR | 22860 |
| I.S.C. VALVE | 22864 |
| PRESSURE REGULATOR | 22870 |
| PRESSURE REG. CONTROL MODULE | 22871 |
| PRESSURE PUMP | 22874 |
| AIR FLOW METER | 22895 |
| AIR FLOW METER BRACKET | 22892 |
| VACUUM CONTROL VALVE | 22906 |
| MAIN RELAY | 22981 |
| DROPPING RESISTOR | 22990 |
| EFI RELAY | 22990 |

| COMPONENT | P.M.C. |
|---------------------------------|--------|
| MAIN & FUEL PUMP RELAY | 22687 |
| CRANK ANGLE SENSOR | 22720 |
| A.A.C. VALVE | 22781 |
| EFI HARNESS | 24011 |
| MIXTURE HEATER RELAY | 25231 |
| PCV VALVE | 11610 |
| EGR TUBE | 14120 |
| EGR CONTROL VALVE | 14710 |
| EGR PASSAGE | 14711 |
| EXHAUST TEMP SENSOR | 14730 |
| BPT VALVE | 14741 |
| A.I.V. UNIT CASE | 14810 |
| A.I.V. TUBE | 14821 |
| AIR INJECTION PIPE | 14823 |
| AIR CONTROL VALVE | 14832 |
| A.B. VALVE | 14835 |
| SERVICE PORT-EVAP. | 14839 |
| AIR INJECTION VALVE | 14864 |
| A.I.V. BOX | 14880 |
| THERMAL VACUUM VALVE | 14880 |
| SOV SOLENOID VALVE | 14891 |
| EPC VALVE | 14893 |
| EGR SOLENOID VALVE | 14894 |
| VACUUM CUT SOLENOID | 14895 |
| A.I.V. SOLENOID VALVE | 14896 |
| EGR MIXTURE SOLENOID | 14896 |
| SPARK DELAY VALVE | 14950 |
| FUEL CUT SOLENOID | 16166 |
| ENGINE REVOLUTION SWITCH | 16767 |
| DETONATION SENSOR | 22080 |
| DETONATION CONTROL UNIT | 22081 |
| EGR WATER TEMP SENSOR | 22120 |
| CK SWITCH-CANISTER VAC CONTRL | 22269 |
| EGR VACUUM CONTROL VALVE | 22362 |
| EGR VACUUM CONTROL VALVE | 22365 |
| THROTTLE VALVE SWITCH | 22620 |
| O2 SENSOR | 22660 |
| REAR OXYGEN O2 SENSOR | 22661 |
| CRANK POSITION SENSOR-RING GEAR | 22733 |
| EGR CONTROL UNIT | 25024 |
| FUEL SHUT OFF CLUTCH SWITCH | 25222 |
| EGR RESERVOIR TANK | 22025 |

POWER TRAIN

| | |
|--------------------------------|-------|
| DRAIN FLUS 4WD | 32104 |
| PROPELLER SHAFT | 37000 |
| FRONT PROPELLER SHAFT | 37010 |
| JOURNAL ASSY | 37126 |
| CENTER BEARING BRACKET | 37511 |
| CENTER BEARING | 37521 |
| CENTER BEARING INSULATOR | 37522 |
| RING & PINION SET | 38100 |
| DRIVE GEAR BOLT | 38102 |
| REAR PINION BEARING | 38120 |
| FRONT PINION BEARING | 38140 |
| PINION BEARING SPACER | 38155 |
| PILOT BEARING SPACER | 38156 |
| DRIVE PINION OIL SEAL | 38180 |
| COMPANION FLANGE | 38210 |
| SIDE FLANGE | 38220 |
| SIDE FLANGE 4WD | 38227 |
| DIFFERENTIAL CARRIER HOUSING | 38310 |
| DIFFERENTIAL CARRIER 4WD | 38311 |
| REAR COVER GASKET | 38320 |
| FRONT PILOT BEARING | 38325 |
| 4WD SIDE BEARING RETAINER | 38341 |
| DIFFERENTIAL SIDE OIL SEAL | 38342 |
| DIFFERENTIAL SIDE OIL SEAL 4WD | 38344 |
| SIDE RETAINER O-RING 4WD | 38345 |
| REAR COVER | 38352 |
| BREATHER | 38352 |
| BREATHER 4WD | 38353 |
| DRAIN FLUS | 38355 |
| LTD SLIP DIFFERENTIAL ASSY | 38420 |
| DIFFERENTIAL CASE | 38421 |
| SIDE GEAR | 38423 |
| SIDE GEAR THRUST WASHER | 38424 |
| PINION MATE | 38425 |
| PINION MATE THRUST WASHER | 38426 |
| PINION MATE SHAFT | 38427 |
| PINION SHAFT LOCK PIN | 38428 |
| PINION SHAFT LOCK PIN 4WD | 38428 |
| THRUST BLOCK | 38430 |

| COMPONENT | P.M.C. |
|---------------------------------------|--------|
| LSD PRESSURE RING | 38431 |
| LSD FRICTION PLATE | 38432 |
| LSD FRICTION DISC | 38433 |
| SIDE BEARING | 38440 |
| DRIVE FLANGE | 38512 |
| RING & PINION 4WD | 38540 |
| FRONT PINION BEARING 4WD | 38541 |
| RING & PINION BEARING 4WD | 38542 |
| PINION BEARING SPACER 4WD | 38543 |
| DRIVE PINION OIL SEAL 4WD | 38544 |
| COMPANION FLANGE 4WD | 38545 |
| DIFFERENTIAL CASE 4WD | 38546 |
| SIDE GEAR 4WD | 38547 |
| SIDE GEAR THRUST WASHER | 38548 |
| PINION MATE 4WD | 38549 |
| PINION MATE THRUST WASHER | 38550 |
| PINION MATE SHAFT 4WD | 38551 |
| SIDE BEARING 4WD | 38552 |
| DRIVE GEAR BOLT 4WD | 38553 |
| REAR COVER 4WD | 40513 |
| REAR COVER GASKET 4WD | 40515 |
| FRONT DIFFERENTIAL MOUNTING INSULATOR | 54710 |
| FRONT DIFFERENTIAL MOUNTING MEMBER | 54720 |
| FRONT DIFFERENTIAL MOUNTING STOPPER | 54751 |
| FRONT DIFF MOUNTING STOPPER BRACKET | 54752 |

| | |
|------------------------------|-------|
| REAR MAIN SEAL | 12279 |
| FLYWHEEL ASSY | 12310 |
| FLYWHEEL RING GEAR | 12311 |
| FIXING BOLT | 12315 |
| DRIVE PLATE ASSY | 12331 |
| A/T COOLER BYPASS VALVE | 21809 |
| OIL COOLER TUBE | 21621 |
| DIFFERENTIAL OIL COOLER | 21659 |
| DIFFERENTIAL OIL PUMP | 21660 |
| THERMAL SWITCH | 21669 |
| DIFFERENTIAL OIL COOLER PIPE | 21682 |
| DROPPING RESISTOR | 22862 |
| CIRCUIT BREAKER | 24320 |
| O.D. CANCEL/POWER SWITCH | 25130 |
| SHIFT PATTERN SELECT SWITCH | 25131 |
| SHIFT LOCK RELAY | 25208 |
| TRANSFER RELAY | 25249 |
| KICKDOWN SWITCH | 25390 |
| INTERLOCK CONTROL UNIT | 28491 |
| TRANSFER CONTROL UNIT | 28495 |
| CLUTCH HOUSING | 30400 |
| CLUTCH RELEASE SLEEVE | 30501 |
| CLUTCH RELEASE BEARING | 30502 |
| CLUTCH WITHDRAWAL LEVER | 30531 |
| WITHDRAWAL LEVER PIN | 30537 |
| DUST COVER | 30642 |
| CLUTCH DAMPER | 30660 |
| CLUTCH MASTER CYLINDER | 30610 |
| CLUTCH OPERATING CYLINDER | 30620 |
| BLEEDER CLUTCH | 30621 |
| PUSH ROD | 30622 |
| CLUTCH BOOSTER | 30630 |
| PUSH ROD | 30631 |
| CHECK VALVE ASSY | 30639 |
| CLUTCH TUBE & HOSE | 30650 |
| CLUTCH VACUUM HOSE | 30654 |
| CLUTCH OPERATING CABLE | 30670 |
| CONVERTER BOLT | 31030 |
| A/T CONTROL UNIT | 31036 |
| O.D. INDICATOR SWITCH | 31041 |
| VACUUM MODULATOR | 31050 |
| THROTTLE CABLE | 31051 |
| VACUUM TUBE | 31061 |
| OIL LEVEL GAUGE | 31080 |
| TORQUE CONVERTER | 31100 |
| CVT STEEL BEY | 31240 |
| CONVERTER HOUSING | 31301 |
| CONVERTER HOUSING GASKET | 31306 |
| TRANSMISSION CASE | 31310 |
| O.D. CASE (H SP) | 31322 |
| REAR EXTENSION (ADAPTOR) | 31330 |
| CONTROL CYLINDER | 31331 |
| REAR EXTENSION GASKET | 31335 |
| REAR EXTENSION OIL SEAL | 31336 |
| OIL PUMP | 31340 |
| FRONT OIL SEAL | 31343 |
| OIL PUMP HOUSING SEAL | 31344 |
| OIL PUMP ROTOR SET | 31345 |

POWER TRAIN

| COMPONENT | P.N.C. |
|-------------------------------|--------|
| CRANK (AUTO TRANS SECTION) | 31982 |
| OIL PUMP GASKET | 31965 |
| BEARING RETAINER (S SP) | 31979 |
| BREATHER | 31981 |
| DRUM SUPPORT (4 SP) | 31985 |
| OIL PAN/WALVE COVER | 31990 |
| SIDE COVER | 31991 |
| GASKET | 31997 |
| INPUT SHAFT | 31411 |
| INTERMEDIATE SHAFT (4 SP) | 31416 |
| FRONT PLANETARY CARRIER | 31426 |
| NEEDLE BEARING | 31426 |
| REAR PLANETARY CARRIER | 31440 |
| CONNECTING DRUM | 31472 |
| ONE-WAY CLUTCH | 31473 |
| FORWARD CLUTCH HUB | 31475 |
| OUTPUT SHAFT | 31480 |
| PARKING GEAR/OIL DISTRIBUTOR | 31486 |
| OUTPUT & IDLER GEAR SET | 31492 |
| DIRECT CLUTCH (4 SP) | 31505 |
| LOW CLUTCH (4 SP) | 31505 |
| FRONT CLUTCH ASSY | 31510 |
| FRONT REV CLUTCH ASSY | 31510 |
| REVERSE CLUTCH DRUM | 31510 |
| REVERSE CLUTCH ASSY | 31510 |
| REV CLUTCH ASSY | 31540 |
| REAR/HIGH CLUTCH | 31540 |
| HIGH CLUTCH DRUM | 31541 |
| HIGH CLUTCH ASSY | 31545 |
| HIGH CLUTCH HUB | 31550 |
| FORWARD CLUTCH ASSY | 31571 |
| FORWARD CLUTCH DRUM | 31571 |
| O.D. PLANETARY CARRIER (4 SP) | 31590 |
| OVERDRIVE CLUTCH HUB | 31591 |
| OVERDRIVE CLUTCH ASSY | 31591 |
| BAKE SEALS | 31610 |
| BRAKE BAND | 31630 |
| LOW & REVERSE BRAKE | 31640 |
| LOW & REVERSE BRAKE | 31650 |
| ADJUST. LATCH PISTON | 31670 |
| ADJUSTOR (4 SP) | 31671 |
| SPEEDOMETER P/N/OV ASSY | 31700 |
| CONTROL VALVE ASSY | 31700 |
| OIL STRAINER | 31770 |
| SPEEDOMETER CASE & GEAR | 31800 |
| RANGE SELECT LEVER | 31810 |
| WASHER & O-RING | 31810 |
| KNIB TOOL SWITCH | 31810 |
| MANUAL SHIF | 31821 |
| MANUAL PLATE ASSY | 31821 |
| VACUUM CYLINDER | 31821 |
| O-RING SEAL | 31821 |
| REV. CLUTCH SENSOR | 31821 |
| TURBINE REVOLUTION SENSOR | 31821 |
| DOWNSHIFT SOLENOID | 31841 |
| LOCK UP SOLENOID | 31841 |
| SHIFT SOLENOID A | 31841 |
| SHIFT SOLENOID B | 31841 |
| OIL DANCE SOLENOID | 31841 |
| LUBE PRESSURE SOLENOID | 31841 |
| OVERDRIVE CLUTCH SOLENOID | 31841 |
| LOW TEMP SENSOR | 31851 |
| PARKING ROD ASSY | 31870 |
| PARKING PAW | 31880 |
| REVERSE LAMP SWITCH | 32005 |
| TOP/NEUTRA. SWITCH | 32005 |
| H/D CATOP SWITCH/4WL | 32021 |
| NEUTRAL SWITCH | 32030 |
| TRANSMISSION CASE | 32100 |
| DRAIN PLUG | 32102 |
| DRAIN PLUG | 32124 |
| DRAIN PLUG (4WD) | 32104 |
| OIL GUIDER/GUTTER | 32107 |
| TRANSMISSION FRONT COVER | 32110 |
| FRONT COVER GASKET | 32110 |
| FRONT COVER/OIL INPUT SEAL | 32113 |
| CASE COVER | 32120 |
| REAR EXTENSION ASSY | 32130 |
| BREATHER | 32131 |
| REAR EXTENSION OIL SEAL | 32132 |
| MAIN DRIVE GEAR | 32200 |
| OUTPUT SHAFT | 32200 |
| PILOT BEARING | 32202 |

| COMPONENT | P.N.C. |
|---------------------------|--------|
| DRIVE GEAR BEARING | 32203 |
| COUNTERSHAFT BEARING | 32210 |
| INPUT SHAFT BEARING | 32210 |
| MAIN GEAR (1ST) | 32230 |
| COUNTERSHAFT NU1 | 32230 |
| MANSHAFT | 32241 |
| MANSHAFT LOCK NUT | 32243 |
| REVERSE GEAR | 32246 |
| REVERSE MAIN GEAR | 32246 |
| GEAR 2ND SPEED | 32250 |
| MAIN GEAR (2ND) | 32250 |
| GEAR 3RD SPEED | 32260 |
| MAIN GEAR (3RD) | 32260 |
| 3RD GEAR INPUT SHAFT | 32261 |
| NEEDLE BEARING | 32264 |
| MAIN GEAR (4TH) | 32270 |
| 4TH GEAR INPUT SHAFT | 32271 |
| REVERSE IDLER GEAR | 32282 |
| REVERSE IDLER BEARING | 32282 |
| RETAINING PIN | 32293 |
| COUNTERSHAFT GEAR (5TH) | 32310 |
| INPUT GEAR (5TH) | 32310 |
| OVERDRIVE COUNTER GEAR | 32310 |
| MAIN GEAR (5TH) | 32340 |
| MANSHAFT GEAR (5TH) B/W/T | 32340 |
| O.D. (5TH) MAIN GEAR | 32340 |
| C RING HOLDER | 32351 |
| SYNCHRO ASSY | 32601 |
| SYNCHRONIZER HUB | 32601 |
| SYNCHRO SLEEVE | 32601 |
| SPREAD RING | 32602 |
| INSERT SPRING | 32603 |
| SPREAD RING | 32603 |
| BAULK RING | 32604 |
| COUPLING SLEEVE | 32605 |
| INSERT | 32605 |
| SHIFTING INSERT | 32605 |
| REVERSE BAULK RING | 32611 |
| BAULK RING | 32620 |
| BAULK RING (1ST) | 32620 |
| BLOCKER RING | 32620 |
| BAULK RING (2ND) | 32621 |
| BLOCKER RING | 32621 |
| BAULK RING (3RD) | 32622 |
| BLOCKER RING | 32622 |
| BAULK RING (4TH) | 32623 |
| BLOCKER RING | 32623 |
| BAULK RING (5TH) | 32624 |
| BLOCKER RING | 32624 |
| SYNCHRO RING SET (5TH) | 32625 |
| SPEEDMASTER DRIVE GEAR | 32701 |
| SPEEDOMETER PINION | 32702 |
| CHECK BALL & SPRING | 32721 |
| STRIKING LEVER | 32890 |
| STRIKING ROD PIN | 32911 |
| TRANSFER FRONT CASE | 33100 |
| TRANSFER REAR CASE | 33100 |
| TRANSFER CENTER CASE | 33100 |
| FRONT CASE OIL SEAL | 33110 |
| MAIN GEAR | 33113 |
| DRIVESHAFT OIL SEAL | 33114 |

| COMPONENT | P.N.C. |
|-----------------------------------|--------|
| RING GEAR | 33115 |
| PINION SLEEVE | 33143 |
| SHIFT FORK SPRING | 33160 |
| ACTUATOR ASSY | 34310 |
| CONTROL ROD LOWER DRAG COE | 34400 |
| SHIFT ROD TRUNNION | 34410 |
| DUST COVER (4WD) | 34500 |
| CROSS SHAFT LEVER | 34507 |
| CROSS SHAFT ASSY | 34520 |
| SUPPORT ROD (4WD) | 34550 |
| AT CONTROL DEVICE | 34900 |
| KEY INTERLOCK CABLE ASSY | 34908 |
| COMPRESSION ROD | 34910 |
| LEVER SHAFT | 34910 |
| POSITION PLATE PIN | 34917 |
| CONTROL LEVER | 34920 |
| AT CABLE | 34930 |
| INTERLOCK SOLENOID | 34970 |
| "PARK" POSITION SWITCH/AT VEHICLE | 34980 |
| FINAL GEAR | 38101 |
| DIFFERENTIAL CASE | 38410 |
| SIDE GEAR | 38413 |
| SIDE GEAR | 38414 |
| PINION MATE | 38415 |
| PINION MATE | 38416 |
| PINION MATE SHAFT | 38417 |
| PINION MATE SHAFT | 38418 |
| COUNTERSHAFT BEARING | 38441 |
| SIDE BEARING | 38444 |
| SIDE BEARING | 38445 |
| DIFFERENTIAL CASE | 38720 |
| PINION MATE SHAFT | 38727 |

STEERING, SUSPENSION, BRAKES

continued

| COMPONENT | P.N.C. |
|--------------------------|--------|
| ANCHOR ARM SLEEVE | 55525 |
| REAR ARM BRACKET | 55530 |
| TORSION BAR STOPPER | 55539 |
| SPRING SEAT STAY | 55545 |
| BUSHING | 55743 |
| LINK DAMPER | 56220 |
| REAR STABILIZER | 56220 |
| CONNECT ROD BUSHING | 56221 |
| BRACKET-RR STABILIZER | 56225 |
| Mounting BRACKET BUSHING | 56243 |

| | |
|-------------------------------|--------|
| AES MOTOR RELAY | 25167 |
| STOP LAMP SWITCH | 25320 |
| HAND BRAKE CONTROL | 38010 |
| PARKING BRAKE SWITCH | 38011 |
| RATCHET NAIL | 38320 |
| HAND BRAKE STEM | 38325 |
| PARKING BRAKE RELEASE ROD | 38327 |
| HAND BRAKE BRACKET | 38328 |
| HAND BRAKE GUIDE | 38325 |
| HAND BRAKE SPRING | 38327 |
| HAND BRAKE CONTROL LEVER YOKE | 38335 |
| HAND BRAKE LEVER | 38327 |
| CLEVIS PIN (HAND BRAKE) | 3835* |
| FRONT CABLE | 38402 |
| CENTER LEVER BRACKET | 3842* |
| ADJUSTER NUT | 3843* |
| REAR CABLE | 38456 |
| CROSS CABLE | 38457 |
| REAR CABLE/ROD | 38458 |
| CENTER LEVER | 38470 |
| EQUALIZER | 38518 |
| HANGER STRAP/SWING ARM | 38525 |
| SWING ARM | 38525 |
| CLEVIS & PIN (HAND BRAKE) | 38525 |
| RETURN SPRING | 38525 |
| REAR CABLE ADJUSTER | 38525* |
| CHAPER YOKER | 41021 |
| HOLD DOWN PIN | 41041 |
| PIVOT PIN | 4104* |
| ANTI-SQUEAK SPRING | 41085 |
| CLIP | 41086 |
| FRONT GAUGE | 41110 |
| CHAPER SEAL POSITION | 41120 |
| FRONT Baffle PLATE | 41151 |
| REAR GAUGE | 44201 |
| E-CLIP PLATE | 44202 |
| CHAPER BODY | 44205 |
| HOLD DOWN PIN | 44208 |
| EXTENSION LINK | 44207 |
| ANTI-RATTLE PIN | 44208* |
| HAND BRAKE CONTROL LINK YOKE | 44208 |
| REAR BRAKE RETURN SPRING | 44208 |
| TOGGLE LEVER | 44208 |
| REAR WHEEL CYLINDER | 44210 |
| LEVER ASSY | 44212 |
| PISTON & SEAL | 44215 |
| REAR Baffle PLATE | 44218 |
| ANCHOR - PARKING BRAKE | 44218 |
| ADJUSTER ASSY | 44220 |
| MASTER CYLINDER | 46010 |
| OIL RESERVOIR CAP | 46020 |
| RESERVOIR SEAL | 46040 |
| LEVEL INDICATOR | 46040 |
| PISTON ASSY | 46020 |
| SHAP RING | 46082 |
| FLUID RESERVOIR | 46087 |
| FLUID STRAINER | 46089 |
| CLEVIS PIN | 46102 |
| BRAKE PIPE | 46284 |
| CONNECTOR | 46312 |
| DRIVE LOAD SENSING VALVE | 46540 |
| BRAKE MASTER CYLINDER BRACKET | 46541 |
| PEDAL STOPPER | 46548 |
| BRAKE PEDAL | 46520 |
| BRAKE PEDAL BUSHING | 46520 |
| BRAKE FULCRUM SHAFT | 46560 |
| PEDAL SHIFT SLEEVE | 46560 |
| BRAKE PEDAL SPRING | 46565 |
| BRAKE BOOSTER | 47210 |
| BRAKE BOOSTER SPACER | 47211 |
| BRAKE BOOSTER CONNECTOR | 47425 |
| VACUUM TUBE | 47476 |
| CHECK VALVE | 47478 |

| COMPONENT | P.N.C. |
|----------------------------|--------|
| ACTUATOR ASSY | 47600 |
| ABS ACTUATOR RELAY | 47605 |
| MODULE ASSY | 47650 |
| SENSOR ASSY (RR) ANTI-SKID | 47600 |
| SENSOR ASSY (FR) ANTI-SKID | 47910 |
| ANTI-SKID SPLASH GUARD | 47925 |
| ROTOR ASSY (RR) SENSOR | 47950 |
| FRONT SENSOR BRACKET | 47960 |
| ROTOR ASSY (FR) SENSOR | 47970 |

ELECTRICAL

| | |
|-----------------------------|-------|
| ASC D O.D. CANCEL SWITCH | 18990 |
| MAIN HARNESS | 24010 |
| ENGINE HARNESS | 24012 |
| INSTRUMENT HARNESS | 24013 |
| BODY HARNESS | 24014 |
| TAIL HARNESS | 24015 |
| CHASSIS HARNESS | 24016 |
| CONSOLE HARNESS | 24030 |
| ENGINE SUB-HARNESS | 24077 |
| TAIL GATE HARNESS | 24145 |
| ROOM LAMP HARNESS | 24160 |
| FUSIBLE LINK | 24161 |
| AIR BAG HARNESS | 24170 |
| DOOR HARNESS | 24239 |
| REAR WINDOW DEFROSTER | 24320 |
| DEFROSTER WIRING | 24322 |
| CIRCUIT BREAKER | 24330 |
| VOLT METER | 24822 |
| DIGITAL TEMP METER ASSY | 24825 |
| GASKET ASSEMBLY | 24840 |
| SPEEDOMETER | 24850 |
| TACHOMETER | 24855 |
| FUEL GAUGE | 24865 |
| OIL PRESSURE GAUGE | 24875 |
| ODOMETER/TMP METER | 24875 |
| COOLANT TEMP GAUGE | 24890 |
| HEAD UP DISPLAY UNIT | 24941 |
| SECURITY INDICATOR LAMP | 25091 |
| PRINTED CIRCUIT | 25092 |
| WARNING DISPLAY | 25091 |
| SPEEDOMETER CABLE | 25090 |
| WARNING DISPLAY AMPLIFIER | 25095 |
| TAIL GATE SWITCH | 25141 |
| LIGHTING/COMBO SWITCH | 25150 |
| RETRACTABLE HEADLAMP SWITCH | 25195 |
| RELAY - TAIL GATE RELEASE | 25202 |
| HEADLAMP RELAY | 25203 |
| REAR DEFROST RELAY | 25204 |
| HORN RELAY | 25205 |
| INSTRUMENT PANEL SWITCH | 25210 |
| IGNITION RELAY | 25215 |
| INHIBITOR RELAY | 25216 |
| RELAY - AUTO LAMP | 25219 |
| HEADLAMP DIMMER RELAY | 25225 |
| RELAY - FOG LAMP | 25226 |
| ASC D RELAY | 25234 |
| RELAY - REAR WIPER | 25238 |
| STARTER RELAY | 25245 |
| ASC D VACUUM PUMP RELAY | 25245 |
| INTERLOCK EMERGENCY RELAY | 25250 |
| POWER WINDOW RELAY | 25252 |
| CLUTCH RELAY | 25259 |
| MULTI-REMOTE CONTROL RELAY | 25259 |
| SWITCH - SLIDE DOOR | 25259 |
| HEADLAMP CLEANER SWITCH | 25261 |
| REAR WIPER/WASHER SWITCH | 25262 |
| ASC D HOLD RELAY | 25264 |
| SWITCH KNOB | 25267 |
| HEADLAMP DAYTIME RELAY | 25268 |
| NAVI SPEAKER RELAY | 25273 |
| RELAY - N & P | 25278 |
| ILLUMINATION CONTROL | 25280 |
| SWITCH - AUTO DOOR ON/OFF | 25280 |
| SWITCH - BACK DOOR | 25282 |
| ASC D CLUTCH SWITCH | 25283 |
| ASC D STOP SWITCH | 25284 |
| CIGARETTE LIGHTER | 25330 |
| REAR DEFROST SWITCH | 25340 |
| DOOR SWITCH | 25360 |
| DOOR LOCK SWITCH | 25361 |
| BACK DOOR SWITCH | 25363 |
| BACK DOOR UNLOCK SWITCH | 25364 |

| COMPONENT | P.N.C. |
|-----------------------------|--------|
| SWITCH ASSY - FOG LAMP | 25370 |
| TRUNK LID OPENER SWITCH | 25384 |
| FUEL FILLER OPENER SWITCH | 25394 |
| DOOR LOCK SWITCH | 25400 |
| INTERLOCK EMERGENCY SWITCH | 25401 |
| CLUTCH INTERLOCK SWITCH | 25402 |
| FUSE BLOCK | 25410 |
| FUSIBLE LINK HOLDER | 25411 |
| HEADLAMP SENSOR UNIT | 25505 |
| TAIL & STOP LAMP SENSOR | 25506 |
| FLASHER ASSY-COMBINATION | 25520 |
| FLASHER UNIT & RELAY | 25521 |
| METER POWER UNIT | 25522 |
| SEAT BELT WARNING TIMER | 25529 |
| HEADLAMP/TURN SIGNAL SWITCH | 25540 |
| BRUSH ASSEMBLY | 25542 |
| REAR WIPER/WASHER SWITCH | 25560 |
| HEAT MIRROR SWITCH | 25580 |
| VOICE WARNING SWITCH | 25591 |
| TRANSMITTER | 25595 |
| RECEIVER | 25595 |
| GLOVE BOX SWITCH | 25720 |
| POWER WINDOW MAIN SWITCH | 25750 |
| POWER WINDOW SUB SWITCH | 25752 |
| HAZARD SWITCH | 25800 |
| SPEED SENSOR | 25911 |
| VOICE WARNING UNIT | 25925 |
| DISPLAY UNIT | 25930 |
| CONTROL UNIT | 25931 |
| POWER UNIT | 25936 |
| NAVI GPS ANTENNA ASSY | 25957 |
| DRIVE COMPUTER DISPLAY | 25987 |
| CONTROL UNIT - BACK DOOR | 25990 |
| RETRACTABLE HEADLAMP MOUNT | 26010 |
| HEADLAMP ASSY | 26023 |
| FRONT COMBO LAMP ASSY | 26120 |
| SIDE MARKER LAMP ASSY | 26160 |
| SIDE CLEARANCE LAMP | 26162 |
| HORN | 26310 |
| WARNING CHIME/BUZZER | 26350 |
| KEYLESS ENTRY BUZZER | 26357 |
| WIPER ARM | 26380 |
| REAR WIPER ARM | 26390 |
| ROOM LUGGAGE LAMP | 26410 |
| SPOT LAMP SWITCH | 26416 |
| STEP FOOTWELL LAMP | 26420 |
| SWITCH - REAR SIDE WINDOW | 26430 |
| FOOT LAMP ASSY | 26440 |
| VANITY MIRROR LAMP | 26450 |
| LICENSE LAMP ASSY | 26510 |
| REVERSE LAMP | 26540 |
| REAR COMBO LAMP ASSY | 26550 |
| REAR COMB. LAMP HARNESS | 26551 |
| REAR COMB. LAMP GASKET | 26553 |
| HIGH MOUNT STOP LAMP | 26591 |
| CLOCK | 27390 |
| TEE TUBE | 27416 |
| WASHER NOZZLE | 27440 |
| REAR WASHER NOZZLE | 27450 |
| WASHER TUBE | 27460 |
| REAR WASHER TUBE | 27470 |
| WIPER WASHER TANK | 27482 |
| REAR WASHER TANK | 27490 |
| WASHER TANK LEVEL SENSOR | 27491 |
| HEADLAMP CLEANER PUMP | 27522 |
| HEADLAMP CLEANER TVALVE | 27522 |
| HEADLAMP CLEANER TANK | 27534 |
| HEADLAMP CLEANER NOZZLE | 27536 |
| ANTENNA SWITCH | 27922 |
| ANTENNA | 27900 |
| VIDEO OR NAVI DISPLAY ASSY | 28090 |
| REMOTE CONTROL RADIO SWITCH | 28288 |
| REAR AUDIO PANEL | 28268 |
| REAR DEFOGGER CONDENSOF | 28357 |
| ASC D ACTUATOR | 28400 |
| ASC D SERVO VALVE | 28401 |
| ASC D CONTROL LEV | 28402 |
| ASC D CABLE | 28403 |
| ASC D MAIN SWITCH | 28404 |
| RETRACTABLE HEADLAMP TIMER | 28412 |
| ASC D SOLENOID VALVE | 28415 |
| CORNERING LAMP UNIT | 28421 |
| TIMER - OIL LEVEL | 28432 |
| DOOR LOCK TIMER | 28450 |
| REAR DEFROST TIMER | 28455 |

BODY & INTERIOR/ACCESSORIES

| COMPONENT | P.R.C. |
|---------------------------------------|--------|
| BODY SONIC HARNESS | 28376 |
| SEIS. & DIAG. (PLA'S) PRIOR TO 1/8/82 | 28556 |
| SEAT BELT CONTROL UNIT | 28570 |
| SIDE VENT NOZZLE | 66550 |
| DEFROSTER GRILLE | 68742 |
| SIDE DEFROSTER GRILLE | 68745 |
| CENTER VENT NOZZLE | 68790 |
| SUN ROOF LOCK | 73520 |
| MOTOR - STORAGE LID OPENER | 84475 |
| | 86401 |
| | 86508 |
| | 86878 |
| SEAT BELT POWER UNIT | 86910 |
| SEAT BELT SLIDE ASSY | 86920 |

| | |
|------------------------------|-------|
| CUSHION VIBRATOR PLATE | 87980 |
| SLIDE LIFT SWITCH (PWR/SEAT) | 87982 |
| FR. SEAT LIM. SWITCH | 87804 |
| AIR PUMP | 87850 |
| SLIDE ASSY (PWR/SEAT) | 87853 |
| LIFT ASSY (PWR/SEAT) | 87854 |
| SEAT SWIVEL ASSY | 88201 |
| 2ND SEAT BACK HINGE | 88350 |
| REAR RECLINING DEVICE ASSY | 88451 |
| 2ND SEAT SLIDE | 88501 |
| SLIDE ASSY - 3RD SEAT | 88504 |

| | |
|-------------------------------------|-------|
| SEAT LOCK ASSY | 89141 |
| LOCK ASSY - 2ND SEAT | 89342 |
| RECLINING DEVICE ASSY | 89401 |
| RAIL ASSY - 3RD SEAT | 89450 |
| AIR RANGE INDICATOR | 89452 |
| AIR BAG ARM'S MODULE | 89515 |
| AIR BAG MODULE | 89520 |
| SEAT BELT LANE SIDE PROTECT. (PWR) | 89581 |
| SIDE AIR BAG MODULE ASSY | 89830 |
| AIR BAG ON/OFF SWITCH | 89840 |
| AIR BAG ON/OFF SWITCH HARNESS | 89841 |
| MIL. (TRUCK) AT RAIL PRES. & RECALL | 89880 |

| | |
|--------------------------|-------|
| V.S.S. ELECTRONIC MODULE | A4600 |
| V.S.S. STAIN FANEL | A4601 |
| V.S.S. HARNESS | A4602 |
| V.S.S. PIN SWITCH | A4603 |
| V.S.S. ELECTRONIC MODULE | A4700 |

| | |
|---|-------|
| BOW ASSY # | K1981 |
| BOW ASSY #2 | K2001 |
| BOW ASSY #3 | K2006 |
| BOW ASSY #4 | K2008 |
| FR. BUMPER GUIDE LOCK TOP/REAR COVER | K2180 |
| REAR BELT BUCKLE | K2575 |
| TOP STACK CONTROL SWITCH | K4006 |
| DECK LID GAS SHUTTLE | K4185 |
| TOP LOGIC RELAY/BUZZER | K4350 |
| TOP MECHANISM CLAMP ASSY | K4360 |
| REAR SEAT WINDOW SWITCH/REAR FR. BUCKLE | K4410 |
| PRIN/SECONDARY PIN | K4500 |
| DECK LID HINGE ASSY | K4655 |

| | |
|------------------------------|-------|
| HYDRAULIC MOTOR/PUMP ASSY | K8040 |
| HYDRAULIC CYLINDER ASSY | K8045 |
| HOSE/BYPASS VALVE ASSY | K8080 |
| SIDE WINDOW REGULATOR ASSY | K8908 |
| RELAY STORAGE OPENER | 25206 |
| RELAY STORAGE OPEN CANCEL | 25211 |
| RELAY TOP STK RR LOCK OPENER | 25212 |
| RELAY TOP INTER. LOCK | 25213 |
| RELAY TRUNK LID OPENER | 25221 |
| RELAY TRUNK LID OPEN CANCEL | 25222 |
| UNIT - FOLDING ROOF CONTROL | 26313 |
| SWITCH - LIMIT ROOF FRONT | 26355 |
| SWITCH - LIMIT REAR HATCH | 26366 |
| SWITCH - LIMIT ROOF REAR | 26367 |
| STORAGE OPENER SWITCH | 26383 |
| SWITCH - TRUNK OPENER CANCEL | 26385 |

| COMPONENT | P.R.C. |
|--------------------------|--------|
| SWITCH - ROOF OPENER | 25468 |
| THEFT WARNING PIN SWITCH | 68542 |
| COVER - REAR FLOOR | 73608 |

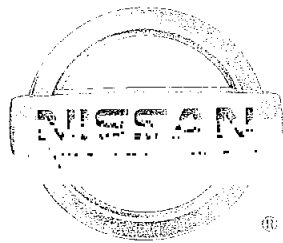
| | |
|---------------------------|-------|
| NO. 2 BOW ASSY | 97020 |
| NO. 3 BOW ASSY | 97040 |
| REAR FRAME | 97061 |
| RECEIVER, PULL-DOWN LATCH | 97082 |
| PULL-DOWN CLAMP ASSY | 97087 |
| LATCH - ROOF FRPNT | 97088 |
| STAY - REAR HATCH | 97089 |
| COVER ASSY REAR | 97090 |

| | |
|--------------------|-------|
| RAIL ASSY, FRONT | 97100 |
| RAIL ASSY, CENTER | 97105 |
| RAIL ASSY, REAR | 97112 |
| LINK ASSY, BALANCE | 97120 |

| | |
|---------------------------------------|-------|
| BRACKET - FOLDING ROOF FRONT MOUNTING | 97143 |
| BRACKET - FOLDING ROOF REAR MOUNTING | 97145 |
| BALANCE SPRING | 97146 |
| COVER RETAINER, FRONT | 97155 |
| HEADLINER RETAINER, NO. 1 BOW | 97164 |
| HEADLINER RETAINER, NO. 3 BOW | 97167 |
| PLATE - FOLDING ROOF | 97170 |
| WELT - FOLDING ROOF | 97172 |
| FRONT RAIL SHIM | 97179 |
| SHIM - FOLDING ROOF | 97179 |
| FRONT WITHSTRIP RETAINER ASSY | 97180 |
| REAR WITHSTRIP RETAINER ASSY | 97184 |
| CENTER RAIL SHIM | 97188 |
| HINGE ASSY, STORAGE LID | 97240 |
| BAR, STORAGE LID | 97241 |
| SHIM - STORAGE LID HINGE | 97242 |
| DOVETAIL ASSY, STORAGE LID | 97244 |
| RECEIVER, DOVETAIL | 97246 |
| SPRING, STORAGE LID LOWER | 97250 |
| ROLLER ASSY, STORAGE LID | 97264 |
| GUIDE RAIL ASSY | 97266 |
| DOVETAIL BOLT ASSY | 97268 |
| LOCK ASSY, STORAGE LID | 97269 |
| STRIPPER, STORAGE LID | 97270 |

| | |
|---------------------------|-------|
| CABLE ASSY, TOP OPENER | 97275 |
| CENTER STORAGE LID BUMPER | 97274 |
| ACTUATOR ASSY, TOP OPENER | 97278 |
| FINISHER - OVERHEAD | 97285 |
| SCREEN - REAR | 97536 |





DISCLAIMER:

THIS BROCHURE IS NOT A CONTRACT. THE BROCHURE CONTENT IS LIMITED BY SIZE. THE ENTIRE CONTRACT IS INCLUDED IN THE NISSAN SECURITY+PLUS SERVICE AGREEMENT. BE SURE TO READ YOUR SECURITY+PLUS SERVICE AGREEMENT AS ALL BENEFITS ARE SUBJECT TO THE LIMITATIONS, EXCLUSIONS, TERMS AND CONDITIONS OF THE SERVICE AGREEMENT.

NOTICE:

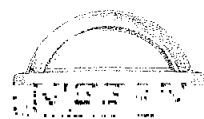
In compliance with federal laws, the contents of this brochure should be interpreted and understood within the meaning of a "Service Contract" as defined in Federal Law. (See 15 USCS Sec. 2301 (8).)

Security+Plus®

VEHICLE PROTECTION PLAN



Component
Coverage
Guide



THE BEST PROTECTION FOR YOUR NISSAN

Nissan's Security+Plus Vehicle Protection Plan provides you with quality long-term mechanical protection and extra peace of mind.

It covers the most important components of your Nissan vehicle: Engine, Transmission, Steering, Drive Axle Assembly, Electrical, and many more. Repairs to these parts can run as high as \$4,000 or more. But with Security+Plus, if a covered part fails, Nissan pays...not you.

This guide lists the covered components for the Gold Preferred Security+Plus Plan, by major category, in Nissan part number code (PNC) numeric sequence. For complete information regarding other coverage features, and those excluded from coverage, contact your Nissan Dealer.

Unlike other service agreements, Security+Plus is exclusively for Nissan owners, and **backed by Nissan North America, Inc.***

NISSAN SECURITY+PLUS: THE SMART CHOICE™

Nissan's Security+Plus Vehicle Protection Plan is designed for new and previously-owned Nissan vehicles—by Nissan—and offers Nissan owners:

Cost-effective coverage up to 7 years, or 100,000 miles, to protect your investment. Guards against loss from the escalating cost of major repairs (including parts and labor).

Nationwide Nissan repair at Authorized Nissan dealerships by Nissan-trained technicians. No payment hassles because the dealer is paid directly by Nissan.

Customer Assistance available throughout the United States. Just contact your nearest Nissan dealer, or call us at 1-800-NISSAN-1.

Optional terms of coverage (years and miles) to fit your driving needs, and an optional zero or \$50 deductible for each eligible component repair.

Transfer Security+Plus to a new owner if you sell your Nissan before coverage expires.**

Convenient and economical coverage, costing only pennies a day. Your Nissan dealer will be happy to explain the various financing options available to you.

The cost of **Genuine Nissan replacement parts** is included for covered repairs—not inferior substitutes.

* In Florida, Security+Plus is backed by Nissan Extended Service Corporation, Inc., P.O. Box 191, Gardena, California 90248-0191. License #60062.

** A nominal transfer fee may apply. For details, please refer to the Security+Plus Service Agreement or contact your local Nissan dealer.



ENGINE 2

- ENGINE & INTERNAL PARTS 2
- LUBRICATION & COOLING 2
- FUEL SYSTEM 2
- MANIFOLDS & TURBOCHARGER 3
- ENGINE ELECTRICAL 3
- FUEL INJECTION 3
- EMISSION CONTROLS 3

POWER TRAIN 3

- PROPELLER SHAFTS & DIFFERENTIAL 3
- CLUTCH, TRANSMISSION, TRANSAXLE & TRANSFER CASE 3

STEERING, SUSPENSION, BRAKES 5

- STEERING SYSTEM 5
- AXLES & SUSPENSION 5
- BRAKES 6

ELECTRICAL 6

- BODY ELECTRICAL 6
- HEATER & AIR CONDITIONING 7

BODY & INTERIOR COMPONENTS 7

- BODY 7
- INTERIOR 8
- ACCELERATOR 8
- HARD CONVERTIBLE TOP 8
- SOFT/AGID CONVERTIBLE TOP 8

AUDIO/VIDEO COMPONENTS 8

- MOBILE ENTERTAINMENT SYSTEM 8

ENGINE/POWER TRAIN Gold Standard Plus

| COMPONENT | P.N.C. |
|------------------------------------|--------|
| INTERCOOLER ASSY | 14496 |
| WATERPIPE, OUTLET | 14498 |
| WATER PIPE, INLET | 14499 |
| MANIFOLD CONNECTOR | 14875 |
| DR. INLET TUBE | 16192 |
| CONNECTOR & GASKET | 15194 |
| DR. OUTLET TUBE | 15192 |
| FRONT EXHAUST GASKET | 20711 |
| CONVERTER GASKET | 20712 |
| INTAKE MANIFOLD CONNECTOR & O-RING | 21049 |
| BOOST SENSOR | 22364 |
| EXHAUST GAS SENSOR | 22593 |
| OIL TEMP SENSOR | 26075 |
| FLOOR INSULATOR | 74661 |

ENGINE/PROPULSION

| | |
|-------------------------------|-------|
| ALTERNATOR BRACKET | 11710 |
| ALTERNATOR ADJUSTING BAR | 11715 |
| THERMO ELEMENT KIT | 16391 |
| TRANSISTOR IGNITION UNIT | 22020 |
| TRANSISTOR TRIG. UNIT | 22022 |
| DISTRIBUTOR | 22100 |
| SHAFT | 22106 |
| REDUCTOR | 22113 |
| GOVERNOR WEIGHT | 22127 |
| DISTRIBUTOR PINION | 22129 |
| DISTRIBUTOR CAM | 22132 |
| ROTOR HEAD | 22157 |
| MAGNET | 22158 |
| HARNESS | 22159 |
| DISTRIBUTOR CAP | 22162 |
| STATOR | 22165 |
| DISTRIBUTOR PROTECTOR | 22172 |
| VACUUM CONTROL | 22206 |
| IGNITION COIL/WAVE TRANSISTOR | 22433 |
| HIGH TENSION CABLE | 22450 |
| RESISTOR | 22480 |
| IGNITION COIL PROTECTOR | 22486 |
| AIR CUT VALVE | 22620 |
| ALTERNATOR | 22620 |
| ALTERNATOR ROTOR | 22610 |
| ALTERNATOR BEARING | 22612 |
| ALTERNATOR BRUSH & HOLDER | 22623 |
| ALTERNATOR PULLEY | 22624 |
| VOLTAGE REGULATOR | 22625 |
| DIODE SET | 22626 |
| STARTER MOTOR ASSY | 22628 |
| FIELD COIL | 22629 |
| ARMATURE | 22630 |
| CLUTCH PINION | 22631 |
| REDUCTION GEAR | 22632 |
| STARTER SOLENOID | 22633 |
| BRUSH | 22634 |
| BATTERY CABLE | 24110 |
| BATTERY TRANSDUCER | 24420 |

EXHAUST SYSTEM

| | |
|---------------------------------|-------|
| POWER VALVE ASSY | 14616 |
| POWER VALVE SOLENOID VALVE ASSY | 14617 |
| POWER VALVE SOLENOID | 14618 |
| E.P.C. VALVE | 14850 |
| PRESSURE REG. CONTROL | 14860 |
| ELECTROINJECTION UNIT | 16213 |
| RETURN CHAMBER | 16217 |
| AIR FLOW SWITCH | 16244 |
| THROTTLE CHAMBER | 16110 |
| THROTTLE LINKAGE | 16125 |
| MIXTURE HEATER | 16126 |
| DASH POT | 16127 |
| E.P.C. SOLENOID VALVE | 16137 |
| E.A.S. UNIT | 16250 |
| EVAP HOLDER | 16364 |
| COLD START VALVE | 16601 |
| FUEL INJECTOR | 16602 |
| INJECTOR | 16604 |
| FUE. PUMP CONTROL MODULE | 17001 |
| THROTTLE CHAMBER | 17116 |
| D.C.D. ASSY | 17484 |
| DETONATION SENSOR | 22000 |
| VACUUM TANK | 22027 |
| VACUUM SWITCH | 22061 |
| CONTROL UNIT (E.C.U.) | 22604 |
| CONTROL UNIT (E.P.) | 22611 |
| THROTTLE VALVE SWITCH | 22620 |
| WATER TEMP SENSOR | 22630 |
| AIR TEMPERATURE SENSOR | 22631 |

| COMPONENT | P.N.C. |
|------------------------------|--------|
| CYLINDER HEAD TEMP SENSOR | 22632 |
| THERMOTIME SWITCH | 22633 |
| AIR REGULATOR | 22660 |
| I.S.C. VALVE | 22664 |
| PRESSURE REGULATOR | 22670 |
| PRESSURE REG. CONTROL MODULE | 22671 |
| PRESSURE PUMP | 22674 |
| AIR FLOW METER | 22680 |
| AIR FLOW METER BRACKET | 22682 |
| VACUUM CONTROL VALVE | 22688 |
| MAIN RELAY | 22694 |
| DROPPING RESISTOR | 22695 |

ENGINE/CONTROL SYSTEM

| | |
|---------------------------------|-------|
| EFI RELAY | 22666 |
| MAIN & FUEL PUMP RELAY | 22667 |
| CRANK ANGLE SENSOR | 23730 |
| A.A.C. VALVE | 23761 |
| EFI HARNESS | 24011 |
| MIXTURE HEATER RELAY | 25231 |
| PCV VALVE | 11610 |
| EGR TUBE | 14120 |
| EGR CONTROL VALVE | 14710 |
| EGR PASSAGE | 14711 |
| EC EGR VACUUM HOSE | 14729 |
| EXHAUST TEMP SENSOR | 14730 |
| BPT VALVE | 14741 |
| A.V. UNIT CASE | 14810 |
| A.V. TUBE | 14821 |
| AIR INJECTION PIPE | 14823 |
| AIR CONTROL VALVE | 14832 |
| A.E. VALVE | 14835 |
| SERVICE PORT-EVAP | 14836 |
| AIR INJECTION VALVE | 14864 |
| EC HOSE | 14866 |
| A.V. BOX | 14860 |
| THERMAL VACUUM VALVE | 14860 |
| SOV SOLENOID VALVE | 14951 |
| EPC VALVE | 14958 |
| EGR SOLENOID VALVE | 14954 |
| VACUUM CUT SOLENOID | 14958 |
| A.V. SOLENOID VALVE | 14958 |
| EGR MIXTURE SOLENOID | 14958 |
| SPARK DELAY VALVE | 14958 |
| FUEL CUT SOLENOID | 16195 |
| ENGINE REVOLUTION SWITCH | 16767 |
| DETONATION SENSOR | 22060 |
| DETONATION CONTROL UNIT | 22061 |
| EGR WATER TEMP SENSOR | 22120 |
| CK SWITCH—CANISTER VAC. CTRL. | 22360 |
| EGR VACUUM CONTROL VALVE | 22363 |
| EGR VACUUM CONTROL VALVE | 22365 |
| THROTTLE VALVE SWITCH | 22620 |
| CT SENSOR | 22660 |
| REAR OXYGEN O2 SENSOR | 22661 |
| CRANK POSITION SENSOR—RING GEAR | 22733 |
| EGR CONTROL UNIT | 25024 |
| FUEL SHUT OFF CLUTCH SWITCH | 25022 |
| EGR RESERVOIR TANK | 27080 |

ENGINE/PROPULSION

| | |
|------------------------------|-------|
| DRAIN PLUG AWD | 32104 |
| PROPELLER SHAFT | 32000 |
| FRONT PROPELLER SHAFT | 32010 |
| JOURNAL ASSY | 32125 |
| CENTER BEARING BRACKET | 32511 |
| CENTER BEARING | 32521 |
| CENTER BEARING INSULATOR | 32522 |
| RING & PINION SET | 39100 |
| DRIVE GEAR BOLT | 39102 |
| REAR PINION BEARING | 39120 |
| FRONT PINION BEARING | 39140 |
| PINION BEARING SPACER | 39165 |
| PILOT BEARING SPACER | 39169 |
| DRIVE PINION OIL SEAL | 39188 |
| COMPANION FLANGE | 39210 |
| SIDE FLANGE | 39220 |
| SIDE FLANGE AWD | 39221 |
| DIFFERENTIAL CARRIER HOUSING | 39310 |
| DIFFERENTIAL CARRIER AWD | 39311 |
| REAR COVER GASKET | 39320 |
| FRONT PILOT BEARING | 39336 |
| AWD SIDE BEARING RETAINER | 39341 |

| COMPONENT | P.N.C. |
|---------------------------------------|--------|
| DIFFERENTIAL SIDE OIL SEAL | 39342 |
| DIFFERENTIAL SIDE OIL SEAL AWD | 39344 |
| SIDE RETAINER O-RING AWD | 39345 |
| REAR COVER | 39351 |
| BREATHER | 39352 |
| BREATHER AWD | 39363 |
| BREATHER HOSE | 39364 |
| DRAIN PLUG | 39365 |
| LTD SLIP DIFFERENTIAL ASSY | 39420 |
| DIFFERENTIAL CASE | 39421 |
| SIDE GEAR | 39423 |
| SIDE GEAR THRUST WASHER | 39424 |
| PINION MATE | 39425 |
| PINION MATE THRUST WASHER | 39426 |
| PINION MATE SHAFT | 39427 |
| PINION SHAFT LOCK PIN | 39428 |
| PINION SHAFT LOCK PIN AWD | 39429 |
| THRUST BLOCK | 39430 |
| LSD PRESSURE RING | 39431 |
| LSD FRICTION PLATE | 39432 |
| LSD FRICTION DISC | 39433 |
| SIDE BEARING | 39440 |
| DRIVE FLANGE | 39512 |
| RING & PINION AWD | 39540 |
| FRONT PINION BEARING AWD | 39541 |
| RING & PINION BEARING AWD | 39542 |
| PINION BEARING SPACER AWD | 39543 |
| DRIVE PINION OIL SEAL AWD | 39544 |
| COMPANION FLANGE AWD | 39545 |
| DIFFERENTIAL CASE AWD | 39546 |
| SIDE GEAR AWD | 39547 |
| SIDE GEAR THRUST WASHER | 39548 |
| PINION MATE AWD | 39549 |
| PINION MATE THRUST WASHER | 39550 |
| PINION MATE SHAFT AWD | 39551 |
| SIDE BEARING AWD | 39552 |
| DRIVE GEAR BOLT AWD | 39553 |
| REAR COVER AWD | 40512 |
| REAR COVER GASKET AWD | 40515 |
| FRONT DIFFERENTIAL MOUNTING INSULATOR | 54710 |
| FRONT DIFFERENTIAL MOUNTING MEMBER | 54726 |
| FRONT DIFFERENTIAL MOUNTING STOPPER | 54751 |
| FRONT DIFF. MOUNTING STOPPER BRACKET | 54752 |

ENGINE/PROPULSION

| | |
|------------------------------|-------|
| REAR MAIN SEAL | 12279 |
| FLYWHEEL ASSY | 12310 |
| FLYWHEEL RING GEAR | 12312 |
| FIXING BOLT | 12315 |
| DRIVE PLATE ASSY | 12331 |
| A/T COOLER BYPASS VALVE | 21607 |
| OIL COOLER TUBE | 21621 |
| DIFFERENTIAL OIL COOLER | 21652 |
| DIFFERENTIAL OIL PUMP | 21660 |
| THERMAL SWITCH | 21669 |
| DIFFERENTIAL OIL COOLER PIPE | 21682 |
| DROPPING RESISTOR | 22693 |
| CIRCUIT BREAKER | 24330 |
| O.D. CANCEL POWER SWITCH | 25130 |
| SHIFT PATTERN SELECT SWITCH | 25131 |
| SHIFT LOCK RELAY | 25206 |
| TRANSFER RELAY | 25246 |
| KICKDOWN SWITCH | 25300 |
| INTERLOCK CONTROL UNIT | 28491 |
| TRANSFER CONTROL UNIT | 28495 |
| CLUTCH HOUSING | 30400 |
| CLUTCH RELEASE SLEEVE | 30501 |
| CLUTCH RELEASE BEARING | 30502 |
| CLUTCH WITHDRAWAL LEVER | 30531 |
| WITHDRAWAL LEVER PIN | 30532 |
| DUST COVER | 30542 |
| CLUTCH DAMPER | 30600 |
| CLUTCH MASTER CYLINDER | 30610 |
| CLUTCH OPERATING CYLINDER | 30620 |
| BLEEDER (CLUTCH) | 30621 |
| PUSH ROD | 30626 |
| CLUTCH BOOSTER | 30630 |
| PUSH ROD | 30631 |
| CHECK VALVE ASSY | 30636 |
| CLUTCH TUBE & HOSE | 30650 |
| CLUTCH VACUUM HOSE | 30664 |
| CLUTCH OPERATING CABLE | 30676 |
| CONVERTER BOLT | 31008 |
| A/T CONTROL UNIT | 31036 |
| O.D. INDICATOR SWITCH | 31041 |

STEERING, SUSPENSION, BRAKES Gold Plated Parts

| COMPONENT | P.N.C. |
|----------------------------|--------|
| FINAL GEAR | 39108 |
| DIFFERENTIAL SIDE OIL SEAL | 38342 |
| DIFFERENTIAL CASE | 39410 |
| SIDE GEAR | 38412 |
| SIDE GEAR | 38414 |
| PINION MATE | 38415 |
| PINION MATE | 38416 |
| PINION MATE SHAFT | 36417 |
| PINION MATE SHAFT | 30418 |
| COUNTERSHAFT BEARING | 36441 |
| SIDE BEARING | 38444 |
| SIDE BEARING | 38446 |
| DIFFERENTIAL CASE | 35720 |
| PINION MATE SHAFT | 39727 |
| VISCOUS COUPLING | 38760 |
| CLEVIS PIN | 46123 |
| CLUTCH PEDAL BUSHING | 46526 |
| CLUTCH PEDAL | 46540 |
| CLUTCH PEDAL RET. SPRING | 46566 |
| VACUUM TANK | 47100 |
| VACUUM TANK ASSY | 47110 |
| A/T CONTROL INDICATOR | 46470 |
| A/T SHIFTLOCK SYSTEM | 46712 |

| COMPONENT | P.N.C. |
|-----------------------------|--------|
| RACK BUSHING | 49522 |
| O-RING | 48525 |
| CYLINDER TUBE | 49541 |
| HOSE/TUBE-PUMP TO GEAR | 49710 |
| PRESSURE TUBE ASSY | 4971E |
| HOSE/TUBE GEAR TO PUMP | 49720 |
| FIG TUBE HOSE | 49721 |
| POWER STEERING RETURN HOSE | 4972E |
| BREATHER TUBE | 49731 |
| POWER STEERING OIL SWITCH | 49761 |
| FLOW CONTROL VALVE | 4981E |
| PRESSURE CONTROL VALVE ASSY | 4983E |
| REAR AXLE BALL JOINT ASSY | 55154 |
| ELECTRIC CYLINDER ASSY | 5570E |
| HICAS POWER CYLINDER ASSY | 55710 |
| HICAS MOTOR ASSEMBLY | 55740 |
| POSITION SENSOR ASSY - MAIN | 55741 |
| POSITION SENSOR ASSY - SUB | 5574E |
| PRESSURE REAR TUBE/HOSE BE | 55750 |
| OUT OFF VALVE ASSY | 5576E |

| COMPONENT | P.N.C. |
|-------------------------|--------|
| SELECT SWITCH | 25140 |
| SUSPENSION CONTROL UNIT | 25903 |
| SONAR ROAD SENSOR | 25865 |
| STEERING ANGLE SENSOR | 2547E |
| CENTER BEARING BRACKET | 37519 |
| CENTER DRIVE BEARING | 37520 |
| AXLE SHAFT | 36169 |
| REAR AXLE SHAFT | 3616E |
| REAR AXLE SHAFT NUT | 36169 |

| COMPONENT | P.N.C. |
|------------------------|--------|
| DRIVE SHAFT | 39900 |
| SPIDER ASSY | 39925 |
| DRIVE SHAFT BOOT | 39850 |
| SLIDE JOINT HOUSING | 39714 |
| SLIDE JOINT SPIDER | 39720 |
| KNICKLE SPINDLE (FWD) | 40014 |
| KNICKLE SPINDLE (REAR) | 40014 |
| KING PIN | 40029 |
| KING PIN BEARING | 40030 |
| STEERING STOPPER BOLT | 40038 |
| STOPPER BOLT CAP | 40039 |
| KNICKLE ARM | 40052 |
| DUST COVER (CV BOOT) | 40089 |
| DRIVE SHAFT BOOT | 40086 |
| UPPER BALL JOINT | 40110 |

| COMPONENT | P.N.C. |
|------------------------|--------|
| FRONT WHEEL BEARING | 40215 |
| FRONT HUB BOLT | 40222 |
| GREASE SEAL | 40232 |
| FREE RUNNING HUB 4WD | 40250 |
| DRIVE CLUTCH GEAR, 4WD | 40252 |

| COMPONENT | P.N.C. |
|----------------------------|--------|
| REAR WHEEL HUB | 43204 |
| REAR AXLE COMPANION FLANGE | 43215 |
| REAR AXLE BEARING | 43216 |
| REAR HUB BOLT | 43222 |
| SEAL, GREASE, RR HUB | 43230 |
| REAR AXLE OIL SEAL | 43252 |
| LOCK NUT | 43262 |
| FRONT COIL SPRING (STRUT) | 54010 |
| FRONT LEAF SPRING | 54010 |
| FRONT TORSION BAR | 54010 |
| SPRING SEAT | 54036 |

| | |
|-----------------|-------|
| STRUT INSULATOR | 54320 |
|-----------------|-------|

| | |
|-------------------------|-------|
| FRONT SUSPENSION MEMBER | 54401 |
|-------------------------|-------|

| COMPONENT | P.N.C. |
|----------------------------|--------|
| TENSION ROD BUSHING | 54476 |
| TENSION ROD BRACKET | 54480 |
| UPPER LINK ASSY | 54524 |
| UPPER LINK BRACKET | 54527 |
| LOWER LINK | 54526 |
| TRANSVERSE LINK | 54526 |
| UPPER LINK | 54533 |
| BUSHING | 54535 |
| UPPER LINK SPINDLE | 54536 |
| STEERING KNUCKLE EXTENSION | 54590 |
| FRONT STABILIZER | 54611 |
| BRACKET & BUSHING | 54614 |
| CONNECTING ROD BUSHING | 54618 |
| ROD-RR STAB. LAUNCHING | 54619 |
| BRACKET | 55015 |
| LOWER LINK ASSY | 55019 |
| LOWER LINK (RS-4WD) | 55019 |
| REAR COIL SPRING (RS) | 55020 |
| REAL COIL SPRING (STRUT) | 55020 |
| REAR COIL SPRING/LINK TYPE | 55020 |
| REAR SPRING (LEAF) | 55020 |
| TORSION BAR | 55020 |
| UPPER LINK | 55023 |
| PARALLEL ROD | 55024 |

| | |
|----------------------|-------|
| INNER BUSHING | 55042 |
| OUTER BUSHING | 55043 |
| SPRING MOUNT BUSHING | 55044 |

| COMPONENT | P.N.C. |
|---------------------------------|--------|
| LINK ASSY/R SUSPENSION UPPER FF | 55121 |
| PANHARD ROD BUSHING | 55135 |
| CONTROL ROD | 55122 |
| PANHARD ROD | 55130 |
| LINK ASSY/R SUSPENSION UPPER RR | 55151 |
| RADIUS ROD AND BOLT | 55140 |
| RADIUS ROD BUSHING | 55142 |
| SPRING MOUNT | 55202 |
| SPRING SHACKLE | 55220 |
| REAR SPRING PIN | 55225 |
| SUSPENSION ARM BOLT | 55226 |
| SPRING LOCK PLATE | 55227 |
| BOUND BUMPER (RS) | 55240 |

STEERING, SUSPENSION, BRAKES

| COMPONENT | P.N.C. |
|-----------------------------|--------|
| IDLER PULLEY | 11924 |
| IDLER PULLEY BRACKET | 11926 |
| POWER STEERING PUMP BRACKET | 11940 |
| ADJUSTING BAR | 11945 |
| LAMP - HICAS WARNING | 23020 |
| HICAS RELAY | 23947 |
| SUP RAMP | 25904 |
| HEAD AMPLIFIER | 26907 |
| STEERING SENSOR ASSY | 2697E |
| HICAS CONTROL UNIT | 2695E |
| RACK & PINION ASSY | 48021 |
| STEERING GEAR ASSY | 48010 |
| STEERING GEAR HOUSING | 48011 |
| STEERING GEAR PINION | 48023 |
| PINION GEAR BEARING | 4802E |
| PINION OIL SEAL | 4802E |
| WORM GEAR BEARING | 4802E |
| FILLER PLUG | 48060 |
| STEERING LOWER JOINT | 48080 |
| STEERING RACK | 48100 |
| SECTOR SHAFT | 48103 |
| WORM OIL SEAL | 48125 |
| SECTOR SHAFT BEARING | 48127 |
| SECTOR SHAFT ADJUST SCREW | 48130 |
| SECTOR SHAFT OIL SEAL | 48137 |
| STEERING WORM ASSY | 48151 |
| SECTOR SHAFT COVER | 48201 |
| STEERING GEAR FOOT | 48203 |
| SECTOR SHAFT COVER GASKET | 48204 |
| REAR HOUSING | 48210 |
| REAR HOUSING CAP | 48212 |
| REAR HOUSING OIL SEAL | 48214 |
| ADJUSTER | 48221 |
| RACK MOUNT CLAMP | 48253 |
| RACK MOUNT INSULATOR | 48376 |
| STEERING WHEEL | 48400 |
| LOCK NUT | 48461 |
| HORN BUTTON ASSY | 48426 |
| STEERING GEAR ARM | 48602 |
| STEERING GEAR LOCK NUT | 48503 |
| SIDE ROD ASSY | 48510 |
| SIDE ROD BAR | 48512 |
| LOCK NUT | 48514 |
| OUTER SOCKET | 48520 |
| INNER SOCKET | 48521 |
| DUST COVER | 48522 |
| SLOTTED NUT | 48523 |
| STEERING IDLER ARM | 48530 |
| STEERING IDLER FIXING BOLT | 48534 |

ELECTRICAL and Powertrain

CONTINUED

| COMPONENT | P.N.C. |
|-------------------|--------|
| SPRING PAD (LEAF) | 85243 |
| SPRING CLIP | 85247 |

| | |
|----------------------------|-------|
| PARALLEL ROD BUSHING | 85480 |
| SUSPENSION BAR (MULTILINK) | 85485 |
| TORSION BEAM - REAR AXLE | 85503 |

| | |
|---------------------|-------|
| ANCHOR ARM SLEEVE | 85526 |
| REAR ARM BRACKET | 85530 |
| TORSION BAR STOPPER | 85539 |
| SPRING SEAT STAY | 85545 |

| | |
|--------------------------|-------|
| BRACKET RR STABILIZER | 85233 |
| MOUNTING BRACKET BUSHING | 85242 |

| | |
|-------------------------------|-------|
| ABS MOTOR RELAY | 26187 |
| STOP LAMP SWITCH | 26320 |
| HAND BRAKE CONTROL | 26910 |
| PARKING BRAKE SWITCH | 26911 |
| RATCHET NAIL | 36323 |
| HAND BRAKE STEW | 36326 |
| PARKING BRAKE RELEASE ROD | 36327 |
| HAND BRAKE BRACKET | 36328 |
| HAND BRAKE GUIDE | 36331 |
| HAND BRAKE SPRING | 36337 |
| HAND BRAKE CONTROL LEVER YOKE | 36339 |
| HAND BRAKE LEVER | 36372 |
| CLEVIS PIN (HAND BRAKE) | 36381 |
| FRONT CABLE | 36402 |
| CENTER LEVER BRACKET | 36471 |
| ADJUSTER NUT | 36437 |
| REAR CABLE | 36450 |
| CROSS CABLE | 36451 |
| REAR CABLE ROD | 36452 |
| CENTER LEVER | 36513 |
| EQUALIZER | 36515 |
| HANGER STRAP (RING ANV) | 36521 |

| | |
|-----------------------------|-------|
| CALIPER YOKE | 41024 |
| HOLD DOWN PIN | 41040 |
| FRONT PIN | 41041 |
| ANTI-SQUEAK SPRING | 41083 |
| CLIP | 41086 |
| FRONT CALIPER | 41116 |
| CALIPER SEAL & PISTON | 41120 |
| FRONT GAFFLE PLATE | 41151 |
| REAR CALIPER | 41310 |
| BACK PLATE | 44020 |
| CALIPER BODY | 44022 |
| HOLD DOWN PIN | 44040 |
| EXTENSION LINK | 44025 |
| ANTI-RATTLE PIN | 44081 |
| HAND BRAKE CONTROL LEV YOKE | 44082 |
| REAR BRAKE RETURN SPRING | 44090 |
| LOGGLE LEVER | 44095 |
| REAR WHEEL CYLINDER | 44100 |
| LEVER ASSY | 44115 |
| PISTON & SEAL | 44120 |
| REAR GAFFLE PLATE | 44151 |
| ANCHOR - PARKING BRAKE | 44180 |
| ADJUSTER ASSY | 44208 |
| MASTER CYLINDER | 46010 |
| OIL RESERVOIR CAP | 46026 |
| RESERVOIR SEAL | 46045 |
| LEVEL INDICATOR | 46046 |
| PISTON ASSY | 46083 |

| COMPONENT | P.N.C. |
|-----------------|--------|
| SNAP RING | 46082 |
| FLUID RESERVOIR | 46080 |

| | |
|-------------------------|-------|
| BRAKE BOOSTER CONNECTOR | 47475 |
|-------------------------|-------|

| | |
|------------------------|-------|
| FRONT SENSOR BRACKET | 47960 |
| ROTOR ASSY (FR) SENSOR | 47970 |

| | |
|------------------------|-------|
| ASC D.C. CANCEL SWITCH | 18930 |
| MAIN HARNESS | 24010 |
| ENGINE HARNESS | 24012 |
| INSTRUMENT HARNESS | 24013 |
| BODY HARNESS | 24014 |
| TAIL HARNESS | 24015 |
| CHASSIS HARNESS | 24016 |
| CONSOLE HARNESS | 24020 |
| ENGINE SUB-HARNESS | 24077 |
| TAIL GATE HARNESS | 24145 |
| BOOK LAMP HARNESS | 24180 |
| FUSIBLE LINK | 24181 |
| AIR BAG HARNESS | 24179 |
| DOOR HARNESS | 24238 |

| | |
|-------------------------|-------|
| GAUGE ASSEMBLY | 24840 |
| SPEEDOMETER | 24850 |
| TACHOMETER | 24855 |
| FUEL GAUGE | 24860 |
| OIL PRESSURE GAUGE | 24870 |
| ODOMETER/TRIP METER | 24875 |
| COOLANT TEMP GAUGE | 24880 |
| HEADLAMP DISPLAY UNIT | 24541 |
| SECURITY INDICATOR LAMP | 25021 |
| PRINTED CIRCUIT | 25030 |
| WARNING DISPLAY | 25041 |

| | |
|-------------------------|-------|
| HEADLAMP RELAY | 25203 |
| REAR DEFROST RELAY | 25204 |
| HORN RELAY | 25205 |
| INSTRUMENT PANEL SWITCH | 25210 |
| IGNITION RELAY | 25215 |
| INHIBITOR RELAY | 25216 |
| RELAY - AUTO LAMP | 25219 |
| HEADLAMP DIMMER RELAY | 25228 |

| | |
|---------------------|-------|
| SWITCH - SLIDE DOOR | 25259 |
|---------------------|-------|

COMPONENT P.N.C.

| | |
|--------------------|-------|
| HEAT MIRROR SWITCH | 25580 |
|--------------------|-------|

| | |
|--------------------|-------|
| SPEED SENSOR | 25911 |
| VOICE WARNING UNIT | 25925 |
| DISPLAY UNIT | 25930 |

| | |
|-----------------------|-------|
| SIDE MARKER LAMP ASSY | 26160 |
| SIDE CLEARANCE LAMP | 26162 |

| | |
|-------------------|-------|
| CLOCK | 27380 |
| TEE TUBE | 27418 |
| | 27440 |
| | 27480 |
| | 27460 |
| REAR WASHER TUBE | 27470 |
| WIPER WASHER TANK | 27480 |

| | |
|----------------|-------|
| ANTENNA SWITCH | 27922 |
|----------------|-------|

BODY & INTERIOR COMPONENTS

| COMPONENT | PRI. |
|--|-------|
| ANTENNA | 2798C |
| VIDEO OR NAVI DISPLAY ASSY | 26930 |
| REMOTE CONTROL RADIO SWITCH | 26266 |
| REAR AUDIO PANEL | 28269 |
| REAR DEFOGGER CONDENSOR | 28367 |
| ASCD ACTUATOR | 28400 |
| ASCD SERVO VALVE | 28401 |
| ASCD CONTROLLER | 28403 |
| ASCD CABLE | 28403 |
| ASCD MAIN SWITCH | 28404 |
| RETRACTABLE HEADLAMP TIMER | 28412 |
| ASCD SOLENOID VALVE | 28415 |
| CORNERING LAMP UNIT | 28421 |
| TIMER-OIL LEVEL | 28433 |
| DOOR LOCK TIMER | 28460 |
| REAR DEFOST TIMER | 28455 |
| INTERIOR LAMP TIMER | 28460 |
| ANTENNA TIMER | 28493 |
| BODY CONTROL LAN MODULE | 28492 |
| P/S CONTROL UNIT | 28500 |
| WIPER RELAY | 28510 |
| POWER WINDOW AMPLIFIER | 28512 |
| CONTROL UNIT - SLIDE DOOR | 28512 |
| TIME CONTROL UNIT | 28560 |
| LIGHTING CONTROL | 28576 |
| LIGHTING SENSOR | 28576 |
| THEFT WARNING CONTROL UNIT | 28591 |
| THEFT WARNING SUB-CONTROL | 28592 |
| THEFT WARNING RELAY | 28593 |
| SMART ENTRANCE CONTROL UNIT | 28594 |
| KEYLESS ENTRY CONTROL UNIT | 28685 |
| REAR WIPER MOTOR | 28710 |
| WASHER MOTOR | 28765 |
| REAR WASHER MOTOR | 28766 |
| WIPER MOTOR | 28810 |
| INTERMITTENT WIPER AMP | 28820 |
| WIPER MOTOR ARM | 28840 |
| WIPER CONNECTING ROD | 28850 |
| WIPER ASSY | 28870 |
| ASCD SPEED SENSOR | 28930 |
| ACCELERATION SENSOR ASSY | 47930 |
| IGNITION KEY LAMP ASSY | 48476 |
| IGNITION SWITCH | 48750 |
| HOOD SWITCH | 60530 |
| DOOR LOCK ACTUATOR | 60550 |
| KEYBOARD | 60504 |
| FRONT REGULATOR MOTOR | 60730 |
| REAR REGULATOR MOTOR | 62730 |
| REAR SIDE WINDOW MOTOR | 63650 |
| INTELLIGENT KEY SWITCH - TRUNK/BACK DOOR | 63665 |
| ASCD VACUUM PUMP | 62276 |

| COMPONENT | PRI. |
|--------------------------------------|-------|
| COMPRESSOR BRACKET | 11910 |
| DRUM PULLEY | 11925 |
| DRUM PULLEY BRACKET | 11926 |
| REAR HEATER CONTROL | 27207 |
| BLOWER MOTOR RELAY | 26908 |
| HEATER RELAY | 26714 |
| A/C RELAY | 26718 |
| COLD RELAY (Driver Side Intake Door) | 26724 |
| REAR A/C RELAY | 26226 |
| FAN MOTOR RELAY | 26240 |
| KEY COLD DOOR RELAY | 26250 |
| REAR HEATER RELAY | 26254 |
| HEATER UNIT | 27000 |
| REAR HEATER COBE | 27010 |
| REAR HEATER MOTOR | 27010 |
| HEATER & A/C CONTROL | 27030 |
| VACUUM SELECTOR VALVE | 27031 |
| A/C CONTROL | 27032 |
| REAR HEATER | 27036 |
| A/C HARNESS | 27039 |
| A/C SWITCH | 27041 |
| BLOWER CASE HOUSING | 27055 |
| BLOWER MOTOR & FAN | 27070 |
| HEATER CONNECTOR | 27071 |
| HEATER SWITCH RESISTOR | 27077 |
| VACUUM ACTUATOR | 27080 |
| VACUUM TANK | 27084 |
| VACUUM WATER COCK | 27089 |
| VACUUM CHECK VALVE | 27090 |
| HEATER COBE | 27115 |
| HEATER COCK | 27116 |
| CONTROL CABLE | 27130 |
| MODE ACTUATOR ASSY | 27141 |
| BLOWER CONTROL AMPLIFIER | 27150 |

| COMPONENT | PRI. |
|--------------------|-------|
| CENTER DEFOST DUCT | 27151 |
| SIDE DEFOST DUCT | 27152 |
| FLOOR NOZZLE | 27167 |

| COMPONENT | PRI. |
|-------------------------|-------|
| REAR HEATER RESISTOR | 27178 |
| HEATER HOSE | 27181 |
| THERMISTOR | 27322 |
| THERMO CONTROL UNIT | 27330 |
| REAR BLOWER MOTOR | 27375 |
| FAN IMPELLER | 27383 |
| REAR EVAPORATOR | 27410 |
| REAR A/C HIGH TUBE ASSY | 27413 |
| REAR A/C LOW TUBE ASSY | 27414 |

| COMPONENT | PRI. |
|-------------------------------------|-------|
| COMPRESSOR ASSY | 27680 |
| RADIATOR FAN CONTROL AMP | 27681 |
| RECEIVER DRIER | 27640 |
| LOW PRESSURE SWITCH | 27648 |
| CONDENSOR | 27650 |
| CONDENSOR FAN & MOTOR | 27651 |
| FAST IDLE DIAPHRAGM | 27656 |
| SOLENOID VALVE | 27658 |
| SUCTION THROTTLE VALVE | 27660 |
| SWITCH-REAR A/C | 27662 |
| SIDE VENT DUCT | 27670 |
| ACCELERATION CUT SWITCH | 27681 |
| THERMO CONTROL AMPLIFIER | 27675 |
| COOLER PIPE | 27677 |
| JOINT CONNECTOR | 27680 |
| VACUUM LOCK-OUT SWITCH | 27688 |
| FLOOR DUCT SENSOR | 27703 |
| VENTILATOR DUCT SENSOR | 27701 |
| DEFOSTER NOZZLE SENSOR | 27702 |
| ROOF IN-CAR SENSOR | 27703 |
| KNOB IN-CAR SENSOR | 27704 |
| SUNLOAD SENSOR | 27705 |
| SENSOR GRILLE | 27706 |
| VACUUM HOSE | 27711 |
| FAN CONTROL AMPLIFIER | 27717 |
| INTAKE SENSOR | 27723 |
| IN-VEHICLE SENSOR | 27727 |
| COMPRESSOR SHAFT SEAL | 27735 |
| WATER TEMP SENSOR | 27739 |
| BILEVEL MOTOR ACTUATOR | 27736 |
| FEEDBACK RESISTOR (PBR) | 27736 |
| AIR MIX DOOR ACTUATOR | 27740 |
| DOUBLE SOLENOID VACUUM VALVE | 27741 |
| MAGNETIC CLUTCH | 27742 |
| SHAFT KING | 27744 |
| ACTUATOR - DEFOSTER DOOR | 27747 |
| ACTUATOR - DRIVER SIDE AIR MIX DOOR | 27748 |
| ACTUATOR - DRIVER SIDE INTAKE DOOR | 27749 |
| ASPIRATOR FAN | 27762 |
| AMBIENT SENSOR | 27755 |
| SUNLOAD SENSOR AMPLIFIER | 27764 |
| SHIFT ACTUATOR VALVE | 27755 |
| SOLENOID VALVE SET | 27770 |
| CENTER VENT DUCT | 27859 |
| REAR HEATER GRILLE | 27813 |
| HEATER REAR DUCT | 27950 |
| AUTO AIR CONTROL AMPLIFIER | 26590 |
| MAGNETIC CLUTCH AMPLIFIER | 26825 |
| CONTROL KNOB | 60722 |
| VALVE-EXPANSION | 62200 |
| SUPER HEAT SWITCH | 92310 |
| THERMAL PROTECTOR | 92316 |
| ACCELERATION CUT TIMER | 92339 |
| SUPER HEAT TIMER | 92331 |
| REAR HEATER HOSE | 92420 |
| REAR HEATER TUBE | 92433 |
| REAR COOLER PIPE | 92462 |
| FLEXIBLE HOSE-LOW PRESSURE | 92480 |
| FLEXIBLE HOSE-HIGH PRESSURE | 92490 |
| PIPE - REAR HIGH-LOW COOLER | 92741 |
| COMPRESSOR RPM SENSOR | 92852 |

BODY & INTERIOR COMPONENTS

| COMPONENT | PRI. |
|-------------------------------|-------|
| ACCELERATOR PEDAL | 18110 |
| BELL CRANK ASSY | 18121 |
| SUN ROOF HARNESS | 24162 |
| SUN ROOF SLIDE SWITCH | 25191 |
| SUN ROOF RELAY | 25192 |
| MIRROR HEAT RELAY | 25200 |
| BACK DOOR HATCH OPENER SWITCH | 25380 |
| REMOTE MIRROR SWITCH | 25870 |
| MIRROR HEAT SWITCH | 25980 |
| AIR GUIDE | 41182 |
| HOOD HINGE | 65400 |
| HOOD STAY | 65470 |
| HOOD LOCK | 65601 |
| HOOD LOCK CABLE | 65620 |
| SUNROOF RAIL ASSY | 73662 |
| SUN ROOF MOTOR GUIDE BRACKET | 73670 |
| SUN ROOF LIMIT SWITCH | 73675 |
| SUN ROOF MOTOR | 73685 |
| SUN ROOF STRIKER | 73812 |
| FEMALE LOCK | 73820 |
| ROOF PANEL HINGE | 73860 |
| DRAIN HOSE (SUNROOF) | 73875 |
| SUNSHADE - SKYROOF | 73960 |
| SEAT BELT ANCHOR STAY | 74830 |
| ENGINE UNDER COVER | 75991 |
| REAR SEAT BACK CENTER SUPPORT | 76730 |
| REAR SIDE WINDOW HINGE | 76825 |
| REAR SIDE WINDOW HANDLE | 76870 |
| UPPER RAIL GUIDE | 77790 |
| REAR RAIL GUIDE | 77796 |
| FUELING STOPPER ASSY | 78402 |
| TRUNK LID SWITCH | 78526 |
| FUEL FILLER LID OPENER | 78826 |
| FRONT DOOR HINGE | 80400 |
| DOOR STOPPER LINK | 80430 |
| FRONT LOCK | 80502 |
| LOCK KNOB ROD | 80510 |
| REMOTE CONTROL ROD | 80512 |
| KNOB ROD PROTECTOR | 80519 |
| LOCK STRIKER | 80570 |
| LOCK KNOB | 80596 |
| LOCK CYLINDER | 80600 |
| FRONT OUTSIDE HANDLE | 80636 |
| HANDLE ROD | 80608 |
| FRONT INSIDE HANDLE | 80670 |
| FRONT WINDOW REGULATOR | 80700 |
| REAR DOOR HINGE | 82402 |
| UPPER STOPPER | 82440 |
| LOWER STOPPER | 82442 |
| UPPER MALE DOVETAIL | 82470 |
| UPPER FEMALE DOVETAIL | 82472 |
| LOWER MALE DOVETAIL | 82474 |
| LOWER FEMALE DOVETAIL | 82476 |
| REAR LOCK ASSY | 82502 |
| LOCK KNOB ROD | 82510 |
| REMOTE CONTROL ROD | 82512 |
| MOTOR - CLOSING | 82530 |
| AUTO DOOR LOCK ACTUATOR | 82560 |
| MOTOR - SLIDE DOOR | 82560 |
| LOCK STRIKER | 82570 |
| MOTOR - BACK DOOR OPEN/CLOSE | 82580 |
| LOCK KNOB | 82595 |
| REAR OUTSIDE HANDLE | 82605 |
| HANDLE ROD | 82608 |
| REAR INSIDE HANDLE | 82670 |
| REAR WINDOW REGULATOR | 82700 |
| REGULATOR HANDLE | 82760 |
| WELT - REAR WINDOW | 83331 |
| SLIDE DOOR LOCK ASSY | 83502 |
| REAR SIDE WINDOW REGULATOR | 83506 |
| REMOTE CONTROL ROD | 83512 |
| OUTSIDE HANDLE | 83605 |
| INSIDE HANDLE | 83670 |
| REGULATOR WIRE | 83752 |
| SLIDE DOOR ROLLER | 83810 |
| SLIDE DOOR LINK | 83840 |
| DECK LID LOCK STRIKER | 84420 |

AUDIO/VIDEO COMPONENTS Gold Preferred Parts

CONT'D.

continued

| COMPONENT | P.N.C. |
|--------------------------|--------|
| LID OPENER LEVER | 84440 |
| LID OPENER CABLE | 84450 |
| DECK LID LOCK | 84460 |
| TRUNK OPENER SOLENOID | 84471 |
| DECK LID HINGE | 84510 |
| BACK DOOR LOCK & HANDLE | 90602 |
| TAILGATE STOPPER | 90510 |
| STRIP - PINCH, BACK DOOR | 90923 |

| | |
|----------------------|-------|
| ELECTRIC DOOR MIRROR | 96302 |
|----------------------|-------|

WHEEL HORN

| | |
|--------------------------------------|-------|
| BODY SONIC RELAY | 28248 |
| SPIRAL CABLE | 28564 |
| AIRBAG CONTROL UNIT | 28565 |
| BODY SONIC HARNESS | 28378 |
| SENS & DIAG (PLANS PRIOR TO 11/1994) | 28556 |

| | |
|-------------------------------|-------|
| CENTER VENT NOZZLE | 88790 |
| SUN, ROOF LOCK | 73250 |
| MOTOR - STORAGE LID OPENER | 84422 |
| RECLINING SWITCH | 86401 |
| SENSOR - PRESSURE DETECTION | 86509 |
| PASSIVE BUCKLE ASSY | 86672 |
| SEAT BELT POWER UNIT | 86610 |
| SEAT BELT SLIDE ASSY | 86620 |
| SEAT BELT LIMIT SWITCH | 86670 |
| SEAT BELT LUMP SWITCH | 86680 |
| SWITCH SEAT SLIDE | 86902 |
| SIDE AIRBAG HARNESS | 87222 |
| BACK VENTILATOR PLATE | 87060 |
| CUSHION VIBRATOR P. ALL | 87780 |
| SLIDE LIFT SWITCH (PASS/SEAT) | 87352 |
| FRT. SEAT LIMIT SWITCH | 87504 |
| HR. PUMP | 87682 |
| SLIDE ASSY (PASS/SEAT) | 87653 |
| LIFT. P. SEAT (PASS/SEAT) | 87654 |
| SEAT SWIVEL ASSY | 88209 |
| 2ND SEAT BACK HINGE | 88350 |

| | |
|---------------------------------------|-------|
| REAR SEAT BACK LOCK | 88608 |
| REAR SEAT BACK STRIKER | 88604 |
| 2ND SEAT HINGE ASSY | 89308 |
| SEAT LOCK ASSY | 89344 |
| LOCK ASSY - 2ND SEAT | 89345 |
| RECLINING DEVICE ASSY | 89401 |
| RAIL ASSY - 2ND SEAT | 89850 |
| AIR RANGE INDICATOR | 89840 |
| AIRBAG MODULE | 89342 |
| AIRBAG MODULE | 89830 |
| SENSOR PRESSURE DETECTION | 88581 |
| SIDE AIRBAG WORKER ASSY | 89820 |
| AIRBAG ON/OFF SWITCH | 89840 |
| AIRBAG ON/OFF SWITCH HARNESS | 89841 |
| MODULE ASSY - AIRBAG PRESS. DETECTION | 90850 |

VEHICLE

| | |
|--------------------------|-------|
| V.S.S. ELECTRONIC MODULE | AA600 |
| V.S.S. STATUS PANEL | AA601 |
| V.S.S. HARNESS | AA602 |
| V.S.S. PIN SWITCH | AA603 |
| V.S.S. ELECTRONIC MODULE | AA700 |

VEHICLE INTERIOR

| | |
|---|-------|
| BOW ASSY #1 | K1951 |
| BOW ASSY #4 | K2022 |
| BOW ASSY #2 | K2038 |
| BOW ASSY #3 | K2050 |
| FRT. DOOR GUIDE LOCATOR/RECEIVER | K2252 |
| REAR VIEW MIRROR | K2572 |
| TOP STACK CONTROL SWITCH | K3086 |
| DECK LID GAS STRUT | K3185 |
| TOP LOGIC RELAY/JUMPER | K3952 |
| TOP MECHANISM CLAMP ASSY | K3656 |
| REAR SIDE WINDOW SWITCH/REEL, FRT. DOOR GUIDE | K4412 |

| COMPONENT | P.N.C. |
|---------------------------|--------|
| PIN/SECONDARY PIN | K5204 |
| DECK LID HINGE ASSY | K6658 |
| HYDRAULIC MOTOR/PUMP ASSY | K8048 |
| HYDRAULIC CYLINDER ASSY | K8049 |
| HOSE/BYPASS VALVE ASSY | K8087 |

| | |
|-------|-------|
| 25465 | 25465 |
| 68542 | 68542 |
| 73808 | 73808 |
| 78871 | 78871 |
| 76874 | 76874 |
| 78900 | 78900 |
| 78852 | 78852 |
| 79826 | 79826 |
| 80520 | 80520 |
| 80524 | 80524 |
| 84472 | 84472 |

| | |
|---------------------------|-------|
| NO. 1 BOW ASSY | 97012 |
| NO. 1 BOW ASSY | 97020 |
| NO. 2 BOW ASSY | 97040 |
| REAR FRAME | 97061 |
| RECEIVER, FULL-DOWN LATCH | 97082 |
| FULL-DOWN CLAMP ASSY | 97087 |
| LATCH - ROOF FRONT | 97088 |
| STAY - REAR HATCH | 97088 |
| LOCK ASSY, REAR | 97090 |
| REAR LOCK STRIKER PIN | 97092 |
| MOTOR - FOLDING ROOF | 97095 |
| TOP FOLDING HOOK ASSY | 97094 |
| REHOOK ASSY, TOP STACK | 97097 |
| RAIL ASSY, FRONT | 97100 |
| RAIL ASSY, CENTER | 97105 |
| RAIL ASSY, REAR | 97112 |
| LINK ASSY, BALANCE | 97120 |
| MOTOR/RAIL - REAR HATCH | 97125 |
| LINK, CONTROL | 97128 |

| | |
|-----------------------|-------|
| BALANCE SPRING | 97148 |
| 52 | 52 |
| 54 | 54 |
| 57 | 57 |
| PLATE - FOLDING ROOF | 97122 |
| WELD - FOLDING ROOF | 97127 |
| FRONT RAIL SHIELD | 97128 |
| SHIELD - FOLDING ROOF | 97128 |

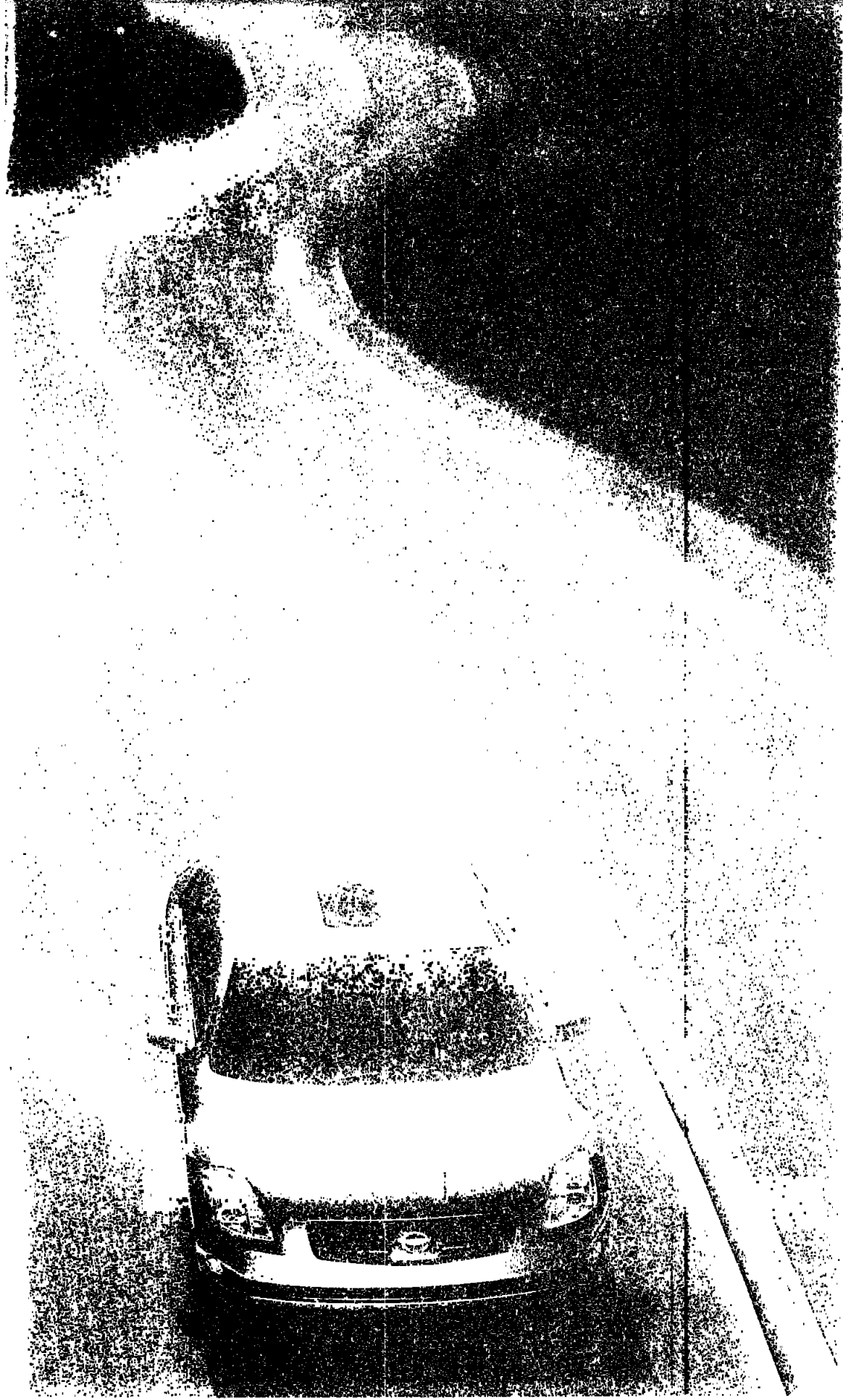
| | |
|------------------|-------|
| BAR, STORAGE LID | 97242 |
|------------------|-------|

| COMPONENT | P.N.C. |
|-------------------------|--------|
| RADIO FINISHER | 26041 |
| PANASONIC CD PLAYER | 2618C |
| PANASONIC CASSETTE DECK | 2920C |

| | |
|----------|-------|
| DVD UNIT | 26119 |
|----------|-------|

| | |
|---------------------------|-------|
| MES Audio Swtch | AA016 |
| MES Overhead Mirror | AA018 |
| MES VCR/DVD Unit | AA018 |
| MES Interact. Exp. | AA018 |
| MES Remote Switch | AA018 |
| MES Headphones | AA018 |
| FES Video Monitor | 28091 |
| FES Video Cassette Player | 26703 |

*Covered Audio Components listed herein are applicable to Preferred Plans sold on or after April 1, 2004.



NISSAN SECURITY+PLUS

THE BEST PROTECTION FOR YOUR INVESTMENT



DISCLAIMER:

THIS BROCHURE IS NOT A CONTRACT. THE BROCHURE CONTENT IS LIMITED BY SIZE. THE ENTIRE CONTRACT IS INCLUDED IN THE NISSAN SECURITY+PLUS SERVICE AGREEMENT. BE SURE TO READ YOUR SECURITY+PLUS SERVICE AGREEMENT AS ALL BENEFITS ARE SUBJECT TO THE LIMITATIONS, EXCLUSIONS, TERMS AND CONDITIONS OF THE SERVICE AGREEMENT.

NOTICE:

In compliance with federal laws, the contents of this brochure should be interpreted and understood within the meaning of a "Service Contract" as defined in Federal Law. (See 15 USCS Sec. 2301 (8).)

Nissan, the Nissan Logo and Nissan Model Names are Nissan Trademarks.
© 2004 Nissan North America, Inc.
1-800-NISSAN-1
NissanUSA.com

NNA-SCP-CCG-001
0404, 60M