

PE06-022
VOLKSWAGEN
10/26/2006
ATTACHMENT

Attachment 1.0

Freiburger, Jim

From: Blaha, Chris
Sent: Tuesday, September 05, 2006 9:56 AM
To: Freiburger, Jim; Myers, Ricky; Saunders, Bryan; Miller, Mitch
Subject: Fw: Circuit Boards

Jim,
FYI, this is the issue with the Minotour PC panel that Ian was asking about. The dealer is inspecting the 200 units @ DCPS today.
Chris

Sent from my BlackBerry Wireless Handheld

-----Original Message-----

From: Childress, Howard (OOT) <Howard.Childress@k12.dc.us>
To: Leonard, Steve
CC: Blaha, Chris; Christopherson, Eric
Sent: Tue Sep 05 08:52:39 2006
Subject: FW: Circuit Boards

Good Morning Mr. Leonard,

I had previously contacted Thomas Bus and Mr. Christopherson concerning loose circuit boards in the compartment above the drivers seat. Several of these were completely loose in the compartment and many others were not securely fastened (no screws in one side or the screws were not tightened down completely). American Bus had scheduled mechanics to come over this past Friday to start checking all the 4000 series buses, however as you can see from the below email, this was canceled due to the inclement weather.

We had rain and wind, however, this did not keep our school buses off the road and we continue today with a full schedule. I see no reason why the weather would prevent your mechanics from checking these circuit boards since they are located inside the bus. We are again experiencing heavy rain and our buses are on the road with the potential for a short circuit .

I have been advised by Mr. Gilmore, Transportation Administrator, to remind you that he went to ' bat' for your company when DCPS was slow in paying your invoices and that he expects prompt attention to this matter. Mr. Gilmore has stated that if we have an 'incident' whereby one of these buses breaks down on the road due to this circuit board problem and children are placed in jeopardy, he will use the full power of his office and the Federal Courts to pursue all available remedies against Thomas Bus and American Bus Sales.

I would hope that you plan on sending mechanics to check these buses today.

Howard R. Childress, Jr.

Fleet Manager

From: Eric Christopherson [mailto:Eric@american-bus.com]
Sent: Friday, September 01, 2006 11:29 AM
To: Childress, Howard (OOT)
Subject: Circuit Boards

Howard,

Due to the inclement weather we were unable to check the 4000 series units today. We will send a team out at the beginning of next week.

I apologize that we were not able to get there today.

Thank you,

Eric Christopherson

Customer Support Service Mgr

American Bus Sales & Service

(410) 224-9775 Ext 261

www.American-Bus.com

Remedy User [CAC Customer Assistance Center (Modify)]

CAC Customer Assistance Center (Modify)

Modify CAC Customer Assistance Center 000000001050800

Caller Information

Location Name	First Name	Last Name	Phone No.
AMERICAN BUS SALES & S	Eric	Christopherson	512203

1FDXE45P36H

LOC Code + Contact Type

TBH5	Service Technician	(410) 224-9775	Ext. 262
------	--------------------	----------------	----------

Individual Assigned: cblaha
Group Assigned: TBB Customer Responst

Note Log

Priority: Medium
Category: Product Issue
Reason for Call: Build Quality

Source: Email

VIN Info | VIN Details

Product	Base Model	Model No.	Body Serial No.	Reg. Dist.	Acct. No.	Location
TBB Minotour DRW	051MS	051MS	512203	21013224		SCHOOL BUS

TRICT OF COLUMBIA PUBLIC SC

Field Follow Up



DISTRICT OF COLUMBIA - 2005							
ABSS	VIN #	BODY #	RELEASE	DELIVER	ODOMETER	DC BUS #	BOARDS
3501	1FDXE45P86HA34531	511979	9/27/2005	9/30/2005	2153	BE4001	9/5 OK
3698	1FDXE45PX6HA34532	511980	9/28/2005	9/30/2005		BE4002	
3699	1FDXE45P16HA34533	511981	9/29/2005	10/3/2005		BE4003	9/11 OK
3700	1FDXE45P36	511982	10/6/2005			BE4004	
3541	1FDXE45P96	511983	9/20/2005	9/26/2005	5925	BE4005	9/6 OK
3542	1FDXE45P06	511984	10/11/2005	10/14/2005	1364	BE4006	9/6 OK
3543	1FDXE45P26	511985	9/27/2005	9/28/2005		BE4007	9/18 OK
3544	1FDXE45P46	511986	9/27/2005	10/4/2005	1125	BE4008	9/5 OK
3545	1FDXE45P66	511987	9/20/2005	9/26/2005	1499	BE4009	9/6 OK
3546	1FDXE45P86	511988	9/20/2005	9/28/2005	1570	BE4010	9/5 OK
3547	1FDXE45PX6	511989	9/16/2005	9/19/2005	1440	BE4011	9/5 OK
3548	1FDXE45P16	511990	9/20/2005	9/26/2005	973	BE4012	LOOSE 9/6
3536	1FDXE45P36	511991	9/22/2005	9/29/2005		BE4013	9/18 OK
3550	1FDXE45PX6	511992	9/27/2005	9/30/2005		BE4014	9/5 OK
3551	1FDXE45P16	511993	9/29/2005	10/4/2005	2686	BE4015	9/6 OK
3552	1FDXE45P36	511994	9/22/2005	9/29/2005		BE4016	LOOSE 9/18
3553	1FDXE45P56	511995	9/20/2005	9/26/2005	2165	BE4017	9/6 OK
3554	1FDXE45P76	511996	9/20/2005	9/26/2005		BE4018	TONY
3555	1FDXE45P96	511997	9/27/2005	10/3/2005		BE4019	
3539	1FDXE45P56	511998	9/27/2005	9/30/2005	1840	BE4020	9/5 OK
3540	1FDXE45P76	511999	9/22/2005	10/3/2005		BE4021	LOOSE 9/11
3558	1FDXE45P46	512000	10/3/2005	10/5/2005	1620	BE4022	9/5 OK
3559	1FDXE45P06	512001	9/27/2005	10/3/2005		BE4023	TONY
3560	1FDXE45P26	512002	9/22/2005	10/3/2005	2150	BE4024	9/6 OK
3561	1FDXE45P46	512003	9/29/2005	10/6/2005		BE4025	9/5 OK
3562	1FDXE45P66	512004	9/27/2005	9/28/2005		BE4026	9/11 OK
3563	1FDXE45P86	512005	10/6/2005	10/10/2005	1376	BE4027	9/6 OK
3564	1FDXE45PX6	512006	9/27/2005	9/30/2005		BE4028	
3565	1FDXE45P16	512007	9/29/2005	10/20/2005		BE4029	9/5 OK
3535	1FDXE45P16	512008	10/3/2005	10/5/2005		BE4030	9/11 OK
3567	1FDXE45P56	512009	9/28/2005	10/4/2005	1941	BE4031	9/6 OK
3568	1FDXE45P76	512010	10/6/2005	10/7/2005	1251	BE4032	9/5 OK
3569	1FDXE45P36	512011	9/27/2005	9/28/2005	2135	BE4033	9/5 OK
3570	1FDXE45P56	512012	10/3/2005	10/6/2005	2684	BE4034	9/6 OK
3571	1FDXE45P76	512013	9/29/2005	10/4/2005		BE4035	
3572	1FDXE45P96	512014	9/22/2005	9/29/2005		BE4036	9/11 OK
3573	1FDXE45P06	512015	9/29/2005	10/6/2005		BE4037	9/18 OK
3574	1FDXE45P26	512016	9/29/2005	10/5/2005		BE4038	9/11 OK
3575	1FDXE45P46	512023	9/27/2005	9/29/2005		BE4039	
3507	1FDXE45P76	512024	9/27/2005	10/4/2005	1999	BE4040	TONY
3508	1FDXE45P96	512025	9/27/2005	10/7/2005	1149	BE4041	9/5 OK
3509	1FDXE45P06	512026	9/22/2005	10/3/2005		BE4042	9/6 OK
3510	1FDXE45P76	512027	10/6/2005	10/11/2005	1690	BE4043	LOOSE 9/6
3580	1FDXE45P86	512028	10/6/2005	10/17/2005		BE4044	
3581	1FDXE45PX6	512029	9/27/2005	10/25/2005	678	BE4045	9/5 OK
3511	1FDXE45P96	512030	9/27/2005	9/30/2005		BE4046	9/11 OK
3583	1FDXE45P36	512031	10/6/2005	10/7/2005	854	BE4047	9/5 OK
3512	1FDXE45P06	512032	10/6/2005	10/13/2005		BE4048	9/6 OK
3513	1FDXE45P26	512033	9/27/2005	9/28/2005	1913	BE4049	9/5 OK
3514	1FDXE45P46	512034	9/27/2005	9/30/2005	1424	BE4050	9/5 OK
3515	1FDXE45P66	512035	9/27/2005	9/30/2005		BE4051	TONY
3588	1FDXE45P26	512036	10/6/2005	10/10/2005	907	BE4052	9/6 OK
3516	1FDXE45P86	512037	9/28/2005	10/3/2005	2954	BE4053	9/6 OK
3590	1FDXE45P06	512038	10/3/2005	10/7/2005	1105	BE4054	9/5 OK
3517	1FDXE45PX6	512039	9/29/2005	10/5/2005		BE4055	LOOSE 9/6
3518	1FDXE45P16	512040	9/29/2005	10/5/2005	1789	BE4056	LOOSE 9/6
3519	1FDXE45P36	512041	10/10/2005	10/21/2005	632	BE4057	9/6 OK
3520	1FDXE45PX6	512042	9/29/2005	10/4/2005	2217	BE4058	LOOSE 9/6
3521	1FDXE45P16	512043	9/28/2005	10/4/2005	1648	BE4059	9/6 OK
3523	1FDXE45P56	512044	9/29/2005	10/6/2005		BE4060	9/18 OK
3597	1FDXE45P36	512045	9/29/2005	10/6/2005		BE4061	9/18 OK
3524	1FDXE45P76	512046	9/29/2005	10/4/2005		BE4062	TONY
3525	1FDXE45P96	512047	9/29/2005	10/19/2005		BE4063	9/18 OK
3526	1FDXE45P06	512048	10/3/2005	10/7/2005	1105	BE4064	9/5 OK

DISTRICT OF COLUMBIA - 2005							
ABSS	VIN #	BODY #	RELEASE	DELIVER	ODOMETER	DC BUS #	BOARDS
3527	1FDXE45P26H	512049	9/28/2005	9/30/2005		BE4065	
3528	1FDXE45P46H	512050	9/28/2005	9/30/2005		BE4066	9/11 OK
3603	1FDXE45P96H	512051	9/29/2005	10/6/2005		BE4067	9/6 OK
3529	1FDXE45P66H	512052	10/3/2005	10/5/2005		BE4068	9/18 OK
3530	1FDXE45P26H	512053	9/29/2005	10/3/2005	3872	BE4069	9/6 OK
3531	1FDXE45P46H	512054	10/5/2005	10/11/2005	1024	BE4070	LOOSE 9/6
3532	1FDXE45P66H	512055	9/29/2005	10/5/2005		BE4071	9/18 OK
3608	1FDXE45P86H	512056	10/6/2005	10/14/2005		BE4072	9/18 OK
3632	1FDXE45P16H	512057	10/6/2005	10/19/2005		BE4073	9/18 OK
3502	1FDXE45P86H	512058	10/10/2005	10/11/2005	1810	BE4074	9/6 OK
3503	1FDXE45PX6H	512059	9/29/2005	10/3/2005	3239	BE4075	9/5 OK
3577	1FDXE45P86H	512064	9/29/2005	10/3/2005		BE4076	TONY
3504	1FDXE45P16H	512060	10/3/2005	10/7/2005	1652	BE4077	9/5 OK
3614	1FDXE45P36H	512062	10/3/2005	10/5/2005	3212	BE4078	9/5 OK
3579	1FDXE45P66H	512063	9/29/2005	10/4/2005	2193	BE4079	9/5 OK
3613	1FDXE45P16H	512061	9/29/2005	10/6/2005		BE4080	
3584	1FDXE45P56H	512065	10/6/2005	10/12/2005	1606	BE4081	9/6 OK
3594	1FDXE45P86H	512066	10/10/2005	10/18/2005		BE4082	9/11 OK
3596	1FDXE45P16H	512067	10/10/2005	10/17/2005		BE4083	9/6 OK
3606	1FDXE45P46H	512068	10/10/2005	10/14/2005		BE4084	
3633	1FDXE45P36H	512069	10/3/2005	10/5/2005	1408	BE4085	9/6 OK
3636	1FDXE45P96H	512070	9/29/2005	10/4/2005	1670	BE4086	9/5 OK
3655	1FDXE45P26H	512071	10/3/2005	10/7/2005	1698	BE4087	LOOSE 9/6
3624	1FDXE45P26H	512072	10/6/2005	10/7/2005	1362	BE4088	9/5 OK
3626	1FDXE45P66H	512073	10/6/2005	10/13/2005		BE4089	9/11 OK
3533	1FDXE45P86H	512074	10/6/2005	10/11/2005		BE4090	LOOSE 9/11
3651	1FDXE45P56H	512075	10/3/2005	10/5/2005	3165	BE4091	9/6 OK
3647	1FDXE45P36H	512076	10/10/2005	10/14/2005		BE4092	9/18 OK
3629	1FDXE45P66H	512089	10/6/2005	10/11/2005		BE4093	
3630	1FDXE45P86H	512090	10/6/2005	10/11/2005	1773	BE4094	LOOSE 9/6
3631	1FDXE45PX6H	512091	10/6/2005	10/13/2005		BE4095	9/11 OK
3609	1FDXE45P46H	512092	10/6/2005	10/7/2005	1601	BE4096	9/5 OK
3621	1FDXE45P76H	512093	10/12/2005	11/11/2005	408	BE4097	LOOSE 9/6
3634	1FDXE45P56H	512094	10/6/2005	10/11/2005	1361	BE4098	9/6 OK
3635	1FDXE45P76H	512095	10/6/2005	10/10/2005	957	BE4099	9/6 OK
3622	1FDXE45P96H	512096	10/6/2005	10/10/2005		BE4100	9/18 OK
3637	1FDXE45P06H	512097	10/11/2005	10/18/2005		BE4101	
3638	1FDXE45P26H	512098	10/3/2005	10/6/2005		BE4102	9/18 OK
3639	1FDXE45P96H	512099	10/19/2005	10/24/2005		BE4103	
3640	1FDXE45P06H	512100	10/6/2005	10/13/2005		BE4104	9/18 OK
3641	1FDXE45P26H	512101	10/6/2005	10/12/2005	1768	BE4105	9/6 OK
3642	1FDXE45P46H	512102	10/6/2005	10/11/2005	1108	BE4106	9/6 OK
3643	1FDXE45P66H	512103	10/10/2005	10/26/2005	464	BE4107	9/5 OK
3644	1FDXE45P86H	512104	10/6/2005	10/12/2005	1679	BE4108	9/6 OK
3645	1FDXE45PX6H	512105	10/6/2005	10/12/2005		BE4109	9/18 OK
3646	1FDXE45P16H	512106	10/6/2005	10/12/2005		BE4110	9/18 OK
3628	1FDXE45PX6H	512107	10/6/2005	10/13/2005		BE4111	TONY
3648	1FDXE45P56H	512108	10/6/2005	10/13/2005		BE4112	
3649	1FDXE45P16H	512109	10/6/2006	10/12/2005	1154	BE4113	LOOSE 9/6
3650	1FDXE45P36H	512110	10/6/2005	10/17/2005	1008	BE4114	9/6 OK
3627	1FDXE45P86H	512111	10/10/2005	10/11/2005	1275	BE4115	9/6 OK
3652	1FDXE45P76H	512112	10/14/2005	10/20/2005		BE4116	9/11 OK
3653	1FDXE45P96H	512113	10/6/2005	10/7/2005	1161	BE4117	9/5 OK
3654	1FDXE45P06H	512114	10/12/2005	10/17/2005		BE4118	
3623	1FDXE45P06H	512115	10/10/2005	10/18/2005	916	BE4119	9/6 OK
3656	1FDXE45P46H	512116	10/6/2005	10/13/2005	1204	BE4120	9/5 OK
3657	1FDXE45P66H	512117	10/6/2005	10/11/2005		BE4121	9/11 OK
3658	1FDXE45P86H	512118	10/10/2005	10/13/2005	1237	BE4122	9/5 OK
3659	1FDXE45P46H	512119	10/6/2005	10/14/2005		BE4123	LOOSE 9/18
3660	1FDXE45P66H	512120	10/6/2005	10/25/2005	695	BE4124	9/5 OK
3610	1FDXE45P66H	512121	10/10/2005	10/12/2005	1127	BE4125	9/5 OK
3611	1FDXE45P86H	512122	10/12/2005	10/19/2005	771	BE4126	9/6 OK
3612	1FDXE45PX6H	512123	10/6/2005	10/12/2005	909	BE4127	9/5 LOOSE
3505	1FDXE45P36H	512124	10/6/2005	10/26/2005	554	BE4128	9/5 OK

DISTRICT OF COLUMBIA - 2005							
ABSS	VIN #	BODY #	RELEASE	DELIVER	ODOMETER	DC BUS #	BOARDS
3506	1FDXE45P56H	512125	10/6/2005	10/26/2005	343	BE4129	9/6 OK
3576	1FDXE45P66H	512126	10/6/2005	10/12/2005	1417	BE4130	9/5 OK
3616	1FDXE45P76H	512127	10/10/2005	10/18/2005	1753	BE4131	9/6 OK
3578	1FDXE45PX6H	512128	10/10/2005	10/13/2005		BE4132	9/11 OK
3615	1FDXE45P56H	512129	10/10/2005	10/18/2005	850	BE4133	LOOSE 9/6
3582	1FDXE45P16H	512130	10/10/2005	10/31/2005	365	BE4134	9/6 OK
3617	1FDXE45P96H	512131	10/10/2005	10/14/2005	1160	BE4135	9/6 OK
3585	1FDXE45P76H	512132	10/25/2005	10/31/2005		BE4136	TONY
3586	1FDXE45P96H	512133	10/10/2005	10/12/2005	1621	BE4137	9/6 OK
3587	1FDXE45P06H	512134	10/10/2005	11/11/2005	413	BE4138	9/5 OK
3589	1FDXE45P96H	512135	10/10/2005	10/24/2005	1542	BE4139	9/6 OK
3591	1FDXE45P26H	512136	10/11/2005	10/17/2005		BE4140	9/18 OK
3592	1FDXE45P46H	512149	10/6/2005	10/25/2005	681	BE4141	9/5 OK
3593	1FDXE45P66H	512150	10/13/2005	10/24/2005		BE4142	LOOSE 9/11
3618	1FDXE45P06H	512151	10/10/2005	10/14/2005		BE4143	9/18 OK
3595	1FDXE45PX6H	512152	10/12/2005	10/19/2005		BE4144	9/6 OK
3522	1FDXE45P36H	512153	10/11/2005	10/18/2005	1081	BE4145	LOOSE 9/6
3619	1FDXE45P36H	512154	10/10/2005	10/18/2005	1034	BE4146	9/5 OK
3598	1FDXE45P56H	512155	10/10/2005	10/14/2005	1055	BE4147	9/5 OK
3599	1FDXE45P16H	512156	10/13/2005	10/24/2005	645	BE4148	LOOSE 9/6
3600	1FDXE45P36H	512157	10/11/2005	10/17/2005	1069	BE4149	9/5 OK
3601	1FDXE45P56H	512158	10/13/2005	10/25/2005	827	BE4150	9/5 OK
3602	1FDXE45P76H	512159	10/13/2005	10/24/2005		BE4151	9/11 OK
3604	1FDXE45P06H	512160	10/26/2005	10/31/2005	378	BE4152	9/6 OK
3607	1FDXE45P66H	512163	10/13/2005	10/24/2005	902	BE4153	9/6 OK
3620	1FDXE45P56H	512162	10/11/05	10/18/2005	820	BE4154	9/5 OK
3605	1FDXE45P26H	512161	10/14/2005	10/19/2005		BE4155	
3625	1FDXE45P46H	512164	10/10/2005	10/13/2005	733	BE4156	9/5 OK
3534	1FDXE45PX6H	512165	10/12/2005	10/18/2005	929	BE4157	9/5 OK
3549	1FDXE45P86H	512166	10/10/2005	10/14/2005		BE4158	9/5 OK
3566	1FDXE45P36H	512167	10/12/2005	10/19/2005	1096	BE4159	9/6 OK
3537	1FDXE45P56H	512168	10/11/2005	10/17/2005		BE4160	9/11 OK
3661	1FDXE45P86H	512169	10/13/2005	10/25/2005	704	BE4161	9/6 OK
3662	1FDXE45PX6H	512170	10/10/2005	10/14/2005		BE4162	9/6 OK
3663	1FDXE45P16H	512171	10/19/2005	10/24/2005		BE4163	TONY
3664	1FDXE45P36H	512172	10/13/2005	10/25/2005		BE4164	
3665	1FDXE45P56H	512173	10/13/2005	10/24/2005	933	BE4165	9/6 OK
3666	1FDXE45P76H	512174	10/18/2005	10/21/2005	701	BE4166	9/6 OK
3667	1FDXE45P96H	512175	10/11/2005	10/18/2005	385	BE4167	9/5 OK
3668	1FDXE45P06H	512176	10/14/2005	10/31/2005	452	BE4168	9/6 OK
3669	1FDXE45P76H	512177	10/12/2005	10/20/2005		BE4169	TONY
3670	1FDXE45P96H	512178	10/12/2005	10/20/2005	1168	BE4170	9/6 OK
3671	1FDXE45P06H	512179	10/11/2005	10/17/2005	1396	BE4171	9/5 OK
3672	1FDXE45P26H	512180	10/14/2005	10/25/2005		BE4172	9/5 OK
3673	1FDXE45P46H	512181	10/13/2005	10/26/2005	676	BE4173	9/6 OK
3674	1FDXE45P66H	512182	10/18/2005	10/21/2005	670	BE4174	9/6 OK
3675	1FDXE45P86H	512183	10/13/2005	10/24/2005		BE4175	9/18 OK
3676	1FDXE45PX6H	512184	10/12/2005	10/19/2005		BE4176	LOOSE 9/18
3677	1FDXE45P16H	512185	10/14/2005	10/21/2005		BE4177	9/18 OK
3678	1FDXE45P36H	512186	10/14/2005	10/20/2005	1263	BE4178	9/6 OK
3679	1FDXE45PX6H	512187	10/12/2005	10/21/2005		BE4179	9/18 OK
3680	1FDXE45P16H	512188	10/25/2005	10/26/2005	409	BE4180	9/6 OK
3681	1FDXE45P36H	512189	10/19/2005	10/25/2005	679	BE4181	9/5 OK
3682	1FDXE45P56H	512190	10/13/2005	10/24/2005	1186	BE4182	9/6 OK
3683	1FDXE45P76H	512191	10/19/2005	10/25/2005	577	BE4183	9/5 OK
3684	1FDXE45P96H	512192	10/14/2005	10/21/2005		BE4184	
3685	1FDXE45P06H	512193	10/14/2005	10/21/2005	1009	BE4185	9/5 OK
3686	1FDXE45P26H	512194	10/18/2005	10/20/2005		BE4186	
3687	1FDXE45P46H	512195	10/25/2005	10/26/2005		BE4187	9/11 OK
3688	1FDXE45P66H	512196	10/18/2005	10/20/2005		BE4188	
3689	1FDXE45P26H	512197	10/25/2005	10/26/2005		BE4189	9/11 OK
3690	1FDXE45P46H	512198	10/14/2005	10/25/2005	706	BE4190	LOOSE 9/6
3691	1FDXE45P66H	512199	10/18/2005	10/5/2005		BE4191	TONY
3692	1FDXE45P86H	512200	10/25/2005	10/31/2005		BE4192	TONY

DISTRICT OF COLUMBIA - 2005							
ABSS	VIN #	BODY #	RELEASE	DELIVER	ODOMETER	DC BUS #	BOARDS
3693	1FDXE45PX6H	512201	10/18/2005	10/5/2005		BE4193	TONY
3694	1FDXE45P16H	512202	10/25/2005	10/26/2005	380	BE4194	LOOSE 9/6
3695	1FDXE45P36H	512203	10/19/2005	10/21/2005	1301	BE4195	9/5 OK
3696	1FDXE45P56H	512204	10/19/2005	10/21/2005		BE4196	9/6 OK
3697	1FDXE45P76H	512205	10/18/2005	10/5/2005		BE4197	9/11 OK
3538	1FDXE45P96H	512206	10/25/2005	10/26/2005	383	BE4198	9/6 OK
3556	1FDXE45P08H	512207	10/25/2005	10/26/2005		BE4199	9/11 OK
3557	1FDXE45P28H	512208	10/14/2005	10/21/2005	1019	BE4200	9/5 OK

Claim Report

Attachment 4.0

Thomas Built Buses

Report run on: October 27, 2006 9:08 AM

Name TRANSPORTATION SOUTH, INC

Customer COMMUNITY ACTION COMMITTEE, IN

Number 1080

Address CHAMBERS-TALLAPOOSA-

Claim No 101892

COOSA

Clm Seq No 1498972

Address 170 South Broadnax

Vin 1GDJG31U061

City DADEVILLE

State AL

Zip 36853

Body No 512578

Repaired By D

Order No 80875

Repair Order No 2196

Claim Type PDI

Chassis No 58904

Failure Date 24-JAN-06

Chassis Mfg GMC

Auth No

Recall No

Mileage 504

Recall File No

First Owner N

Total Requested \$11.76

Repair Date 24-JAN-06

Total Approved \$11.76

Problem INSTALLED WELL NUTS IN PANEL

Cause OVER HEAD SWITCH PANEL LOOSE

Correction MISSING WELL NUTS ON PANEL

Part Qty	Part No	Part Desc	Net Price Reg	Net Price Appl	Total App	Net Exp Off	Ret	Dem Part
3	324101	**INVALID PART**	\$0.99	\$0.99	\$3.56	\$2.97		0

Cost Code, Rate, Cost, Requested, Claim, Cost, Approved

Hours Reg	Rate	Description	Hours Appl	Cost Reg	Cost App
.1		Body repairs performed with no flat rate operation available - actual time	.1	\$8.2	\$8.2

Attachment 4.1

Claim Administration

Claim (Dist) | Claim (Admin) | Parts/Labor | Registration | Distributor | Print

Claim Seq No	101892	Next Claim	Reset to All	Claim Type	PDI
Distributor	1080	Next Dealer		Authorization No	
Claim No	101892			REC/VON/PSB	
Body No	512578			Recall File No	
VIN	1GDJG31U061				
Mileage	504				
Failure Date	01/24/2006				
Repair Date	01/24/2006				
	<input checked="" type="radio"/> Repaired by Distributor Repair Order No 2196 <input type="radio"/> Repaired by Other				
Body Chassis	BODY			<input type="radio"/> Option Failure	
Group	0400	MISCELLANEOUS ACCESSORIES, C		<input checked="" type="radio"/> Std. Equip. Failure	
Component	0421	Accessory Compartment - Front, Interio		<input type="radio"/> Contractor	
Item	042101	Panel		<input type="radio"/> School District	
Failure Code	W25	Drunked, Left Off		<input type="radio"/> First Owner	
Problem	OVER HEAD SWITCH PANEL LOOSE				<input type="radio"/> Subsequent
Cause	MISSING WELL NUTS ON PANEL				After Mkt Opts <input type="checkbox"/>
Correction	INSTALLED WELL NUTS IN PANEL				

Claim Administration

Claim (Dist) | Claim (Admin) | Parts/Labor | Registration | Distributor | Pr. N

Recoverable
 Extended Warranty

FSR's | Hist Claims | Next Claim

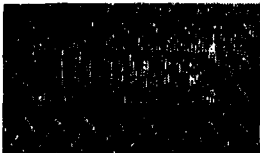
Account Code: WPM
 Payment Period: 2006-B05
 Failed Option:
 Adjustment Code:
 Admin Comments:

	U.S. Currency		Distributor Currency	
	Requested	Approved	Requested	Approved
Other Costs	.00		.00	
Labor Total	8.20	8.20	8.20	8.20
Part Total	3.56	3.56	3.56	3.56
Claim Total	11.76	11.76	11.76	11.76

Approved

Duplicate Claims: 0
 Exchange Rate: 1.0000
 External Claim No:
 Model Code: 1 99 Minicour DRW

Received Date: 03/15/2006
 Review Date: 03/15/2006
 Return Count: 0
 Registration ID: 1448338



Claim Report

Attachment 4.4

Thomas Built Buses

Report run on: October 27, 2006 9:08 AM

Name TRUCKS OF BISMARCK, INC

Customer KENSAL HIGH SCHOOL

Address 803 1ST AVE

Number 35002

Address

City KENSAL

Claim No 101223

State ND **Zip** 58455

Clm Seq No 1499128

Vin 1FDWE35PX6HA

Repaired By D

Body No 610213

Repair Order No 16213

Order No 82565

Chassis No 57449

Claim Type PDI

Chassis Mfg FORD

Failure Date 08-MAR-06

Recall No

Auth No

Recall File No

Mileage 1693

Total Requested \$19.96

First Owner N

Total Approved \$19.96

Repair Date 08-MAR-06

Problem INSTALLED SCREW IN PANEL AND INSPECTED, ALL OK.

Cause COMPLAINT OF SWITCH PANEL WILL NOT FIT RIGHT.

Correction INSPECTED AND FOUND PANEL WAS LOOSE AND NOT SECURE.

Part Qty	Part No	Part Desc	Net Price	Rate	Hours	Cost	Obst	Part
1	23-11657-306	**INVALID PART**	\$0.13	\$0.13	\$0.16	\$0.13		0

Cost Code Other Cost Requested Claim Cost Approved

Hours Req	Rate	Description	Hours App	Cost Req	Obst App
.3		For "actual" time required	.3	\$19.8	\$19.8

Claim Administration		Parts/Labor	Registration	Distributor	Print
Claim Seq No	000000	Next Claim	Reset to All	Claim Type	PDI
Distributor	35002	Next Dealer		Authorization No	
Claim No.	101223			REC/VON/PSB	
Body No	610213			Recall File No	
VIN	1FDWE35PX6H				
Mileage	1693				
Failure Date	03/08/2006				
Repair Date	03/08/2006				
	<input checked="" type="radio"/> Repaired by Distributor	Repair Order No		<input type="radio"/> Option Failure	
	<input type="radio"/> Repaired by Other	16213		<input checked="" type="radio"/> Std. Equip. Failure	
Body Chassis	BODY			<input type="radio"/> Contractor	
Group	0400	MISCELLANEOUS (ACCESSORIES, ETC)		<input type="radio"/> School District	
Component	0445	Front Electrical Compartment and Door		<input type="radio"/> First Owner	
Item	044501	None		<input checked="" type="radio"/> Subsequent	
Failure Code	W03	Assembled Improperly		After Mkt Opts	
Problem	COMPLAINT OF SWITCH PANEL WILL NOT FIT RIGHT.				
Cause	INSPECTED AND FOUND PANEL WAS LOOSE AND NOT SECURE.				
Correction	INSTALLED SCREW IN PANEL AND INSPECTED, ALL OK.				

Attachment 4.7

Claim Administration

Claim (Dist)
 Claim (Admin)
 Parts/Labor
 Registration
 Distributor
 Print < >

Recoverable
 FSR's
 Hist Claims
 Next Claim

Extended Warranty

Account Code: WPM
 Payment Period: 2006-B05
 Failed Option:
 Adjustment Code:
 Admin Comments:

	U.S. Currency		Distributor Currency	
	Requested	Approved	Requested	Approved
Other Costs	.00		.00	
Labor Total	19.80	19.80	19.80	19.80
Part Total	.15	.16	.15	.16
Claim Total	19.95	19.96	19.95	19.96

Duplicate Claims: 0
 Received Date: 03/15/2006
 Exchange Rate: 1.0000
 Review Date: 03/15/2006
 External Claim No:
 Return Count: 0
 Model Code:
 Registration ID: 1451936

Claim Repo

Thomas Built Buses

Report run on: October 27, 2006 9:08 AM



Name SONNY MERRYMAN, INC.

Customer DISTRICT OF COLUMBIA PUBLIC SC

Address 825 NORTH CAPITOL STREET

Address Northeast

City WASHINGTON

State DC **Zip** 20002

Number 47011

Claim No 125027

Clm Seq No 1517259

Vin 1FDXE45P56H

Body No 512094

Order No 78953

Claim Type WAR

Failure Date 21-APR-06

Auth No

Mileage 6683

First Owner Y

Repair Date 21-APR-06

Repaired By O

Repair Order No 42593

Chassis No 56212

Chassis Mfg FORD

Recall No

Recall File No

Total Requested \$256.73

Total Approved \$175.23

Problem TROUBLESHOOT, FOUND OVERHEAD FUSE PANEL FALLING OUT, WIRES PULLED LOOSE. RE-ATTACH PANEL AND REPAIR WIRING. TONY'S AUTO - \$81.50/HR

Cause CROSSING ARM NOT WORKING

Correction INSTALLATION

Part Qty	Part No	Part Desc	Net Price Req	Net Price App	Total App	Net Price App	Cost	Rate	Comm Part
----------	---------	-----------	------------------	------------------	--------------	------------------	------	------	--------------

Cost Code	Other Cost	Requested	Other Cost	Approved
OSL	\$244.5		\$163	
OSP	\$12.23		\$12.23	

Hours Req	Rate	Description	Hours App	Cost Req	Cost App
-----------	------	-------------	-----------	----------	----------

Attachment 4.9

Claim Administration

Claim (Dist) | Claim (Admin) | Parts/Labor | Registration | Distributor | Print

Claim Seq No: [REDACTED] Next Claim: [REDACTED] Reset to All

Distributor: 47011 Next Dealer: [REDACTED]

Claim No: 125027

Body No: 512094

VIN: 1FDXE45P56H [REDACTED]

Mileage: 6683

Failure Date: 04/21/2006

Repair Date: 04/21/2006

Repaired by Distributor Repair Order No
 Repaired by Other 42593

Claim Type: WARRANTY

Authorization No: [REDACTED]

REC/VON/PSB: [REDACTED]

Recall File No: [REDACTED]

Option Failure
 Std. Equip. Failure
 Contractor
 Schopl District
 First Owner
 Subsequent
 After Mkt Opts: [REDACTED]

Body Chassis: BODY

Group	0500	ELECTRICAL AND HEATERS
Component	0505	Circuit Breakers, Fuses, Elect. Conn &
Item	050501	None
Failure Code	W07	Installed Improperly

Problem: CROSSING ARM NOT WORKING

Cause: INSTALLATION

Correction: TROUBLESHOOT, FOUND OVERHEAD FUSE PANEL FALLING OUT, WIRES PL.

Attachment 4.10

Claim Administration									
Claim (Dist)		Claim (Admin)		Parts/Labor		Registration		Distributor	
Claim Parts									
Part No	Description	Qty	OEM	Cause	Make	Return			
			<input checked="" type="checkbox"/>	<input type="checkbox"/>	<input type="checkbox"/>	<input type="checkbox"/>			
			<input type="checkbox"/>	<input type="checkbox"/>	<input type="checkbox"/>	<input type="checkbox"/>			
			<input type="checkbox"/>	<input type="checkbox"/>	<input type="checkbox"/>	<input type="checkbox"/>			
Requested Amounts					Allowed Amounts				
Net Price	Net Ext.	Allowance	Total	Net Price	Net Ext.	Allowance	Part Total		
					.00		.00		
Claim Labor									
Flat Rate	Description	Requested		Allowed					
		Hours	Labor Cost	Hours	Labor Cost				
Other Costs									
Cost Code	Description	Requested		Allowed					
OSL	Outside Labor	244.50		163.00					
OSP	Outside Parts	12.23		12.23					

Attachment 4.11

Claim Administration

Claim (Dist) | Claim (Admin) | Parts/Labor | Registration | Distributor | Print

Recoverable
 Extended Warranty

| |

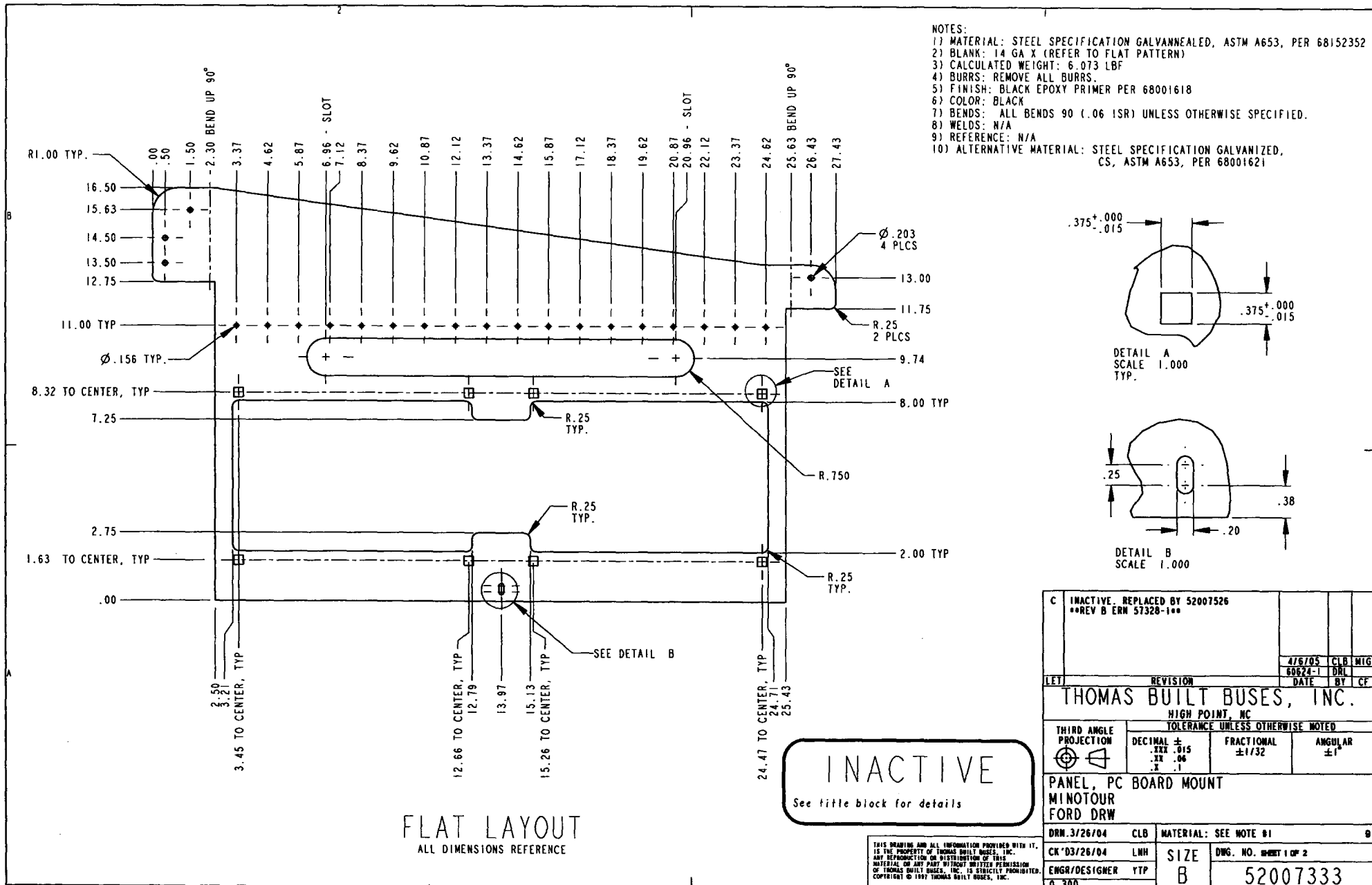
Account Code: WPM
 Payment Period: 2006-810
 Failed Option:

Adjustment Code: A99 PLEASE SEE ADMIN. DESCRIPTION
 Admin Comments: NOTE: THIS INFORMATION IS FOR YOUR USE ONLY. IT IS NOT TO BE REPRODUCED OR DISTRIBUTED.

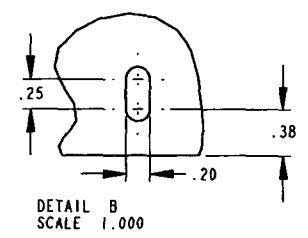
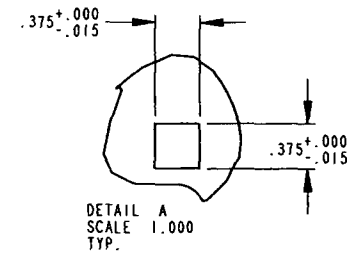
	U.S. Currency		Distributor Currency	
	Requested	Approved	Requested	Approved
Other Costs	256.73	175.23	256.73	175.23
Labor Total	.00		.00	
Part Total	.00	.00	.00	.00
Claim Total	256.73	175.23	256.73	175.23

Approved

Duplicate Claims	0	Received Date	05/25/2006
Exchange Rate	1.0000	Review Date	05/25/2006
External Claim No		Return Count	1
Model Code	A 38 Minotaur CRW	Registration ID	1441963



- NOTES:
- 1) MATERIAL: STEEL SPECIFICATION GALVANNEALED, ASTM A653, PER 68152352
 - 2) BLANK: 14 GA X (REFER TO FLAT PATTERN)
 - 3) CALCULATED WEIGHT: 6.073 LBF
 - 4) BURRS: REMOVE ALL BURRS.
 - 5) FINISH: BLACK EPOXY PRIMER PER 68001618
 - 6) COLOR: BLACK
 - 7) BENDS: ALL BENDS 90 (.06 ISR) UNLESS OTHERWISE SPECIFIED.
 - 8) WELDS: N/A
 - 9) REFERENCE: N/A
 - 10) ALTERNATIVE MATERIAL: STEEL SPECIFICATION GALVANIZED, CS, ASTM A653, PER 68001621

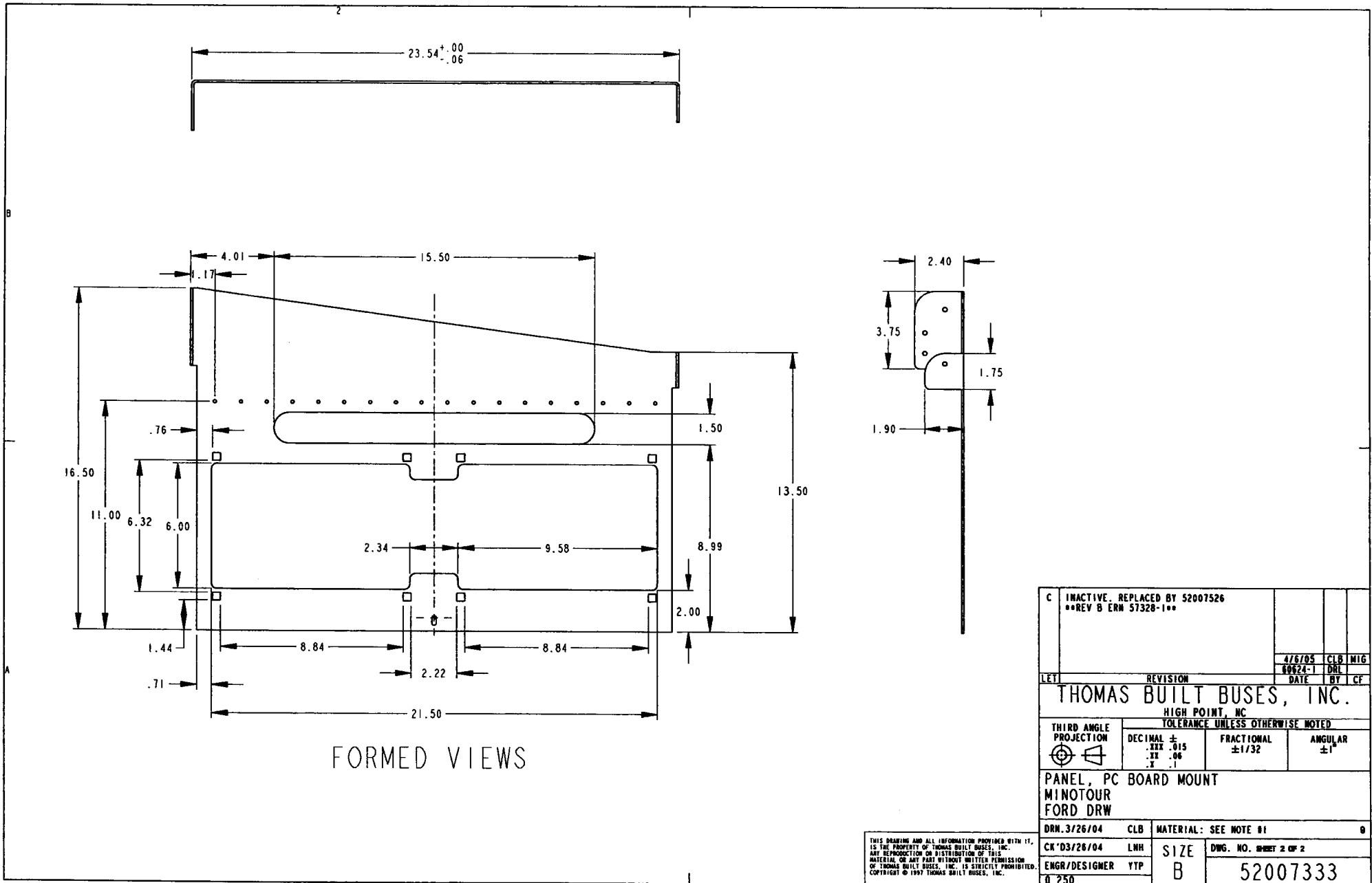


INACTIVE
 See title block for details

FLAT LAYOUT
 ALL DIMENSIONS REFERENCE

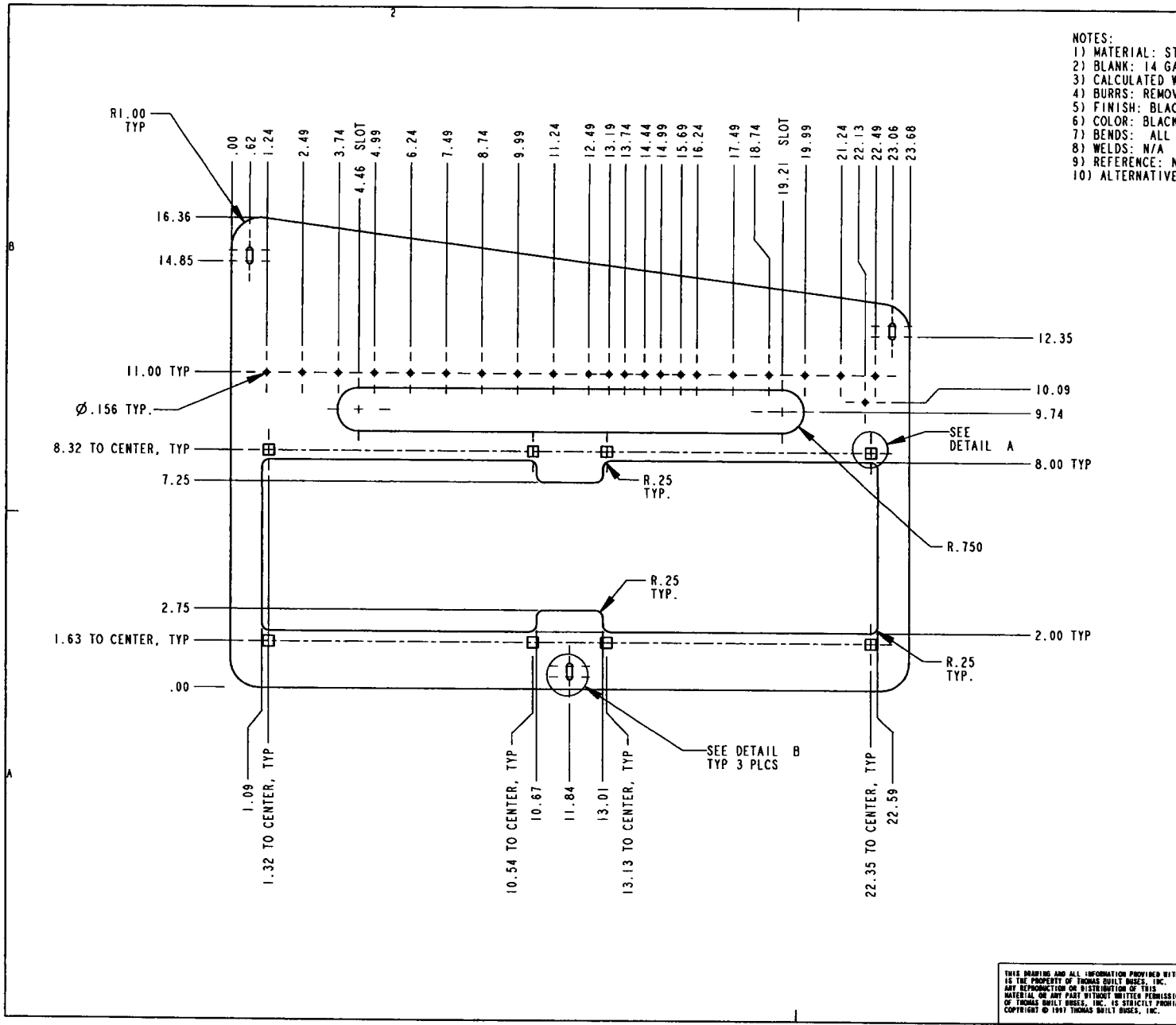
C INACTIVE. REPLACED BY 52007526 **REV B ERN 57328-1**			
LET	REVISION	4/6/05	CLB MIG
		60624-1	DRL
		DATE	BY CF
THOMAS BUILT BUSES, INC. HIGH POINT, NC TOLERANCE UNLESS OTHERWISE NOTED			
THIRD ANGLE PROJECTION	DECIMAL ± .015	FRACTIONAL ± 1/32	ANGULAR ± 1°
PANEL, PC BOARD MOUNT MINI TOUR FORD DRW			
DRN.3/26/04	CLB	MATERIAL: SEE NOTE #1	9
CK*03/26/04	LWH	SIZE B	DWG. NO. SHEET 1 OF 2
ENGR/DESIGNER YTP	52007333		
Q.300			

THIS DRAWING AND ALL INFORMATION PROVIDED WITH IT, IS THE PROPERTY OF THOMAS BUILT BUSES, INC. ANY REPRODUCTION OR DISTRIBUTION OF THIS MATERIAL OR ANY PART WITHOUT WRITTEN PERMISSION OF THOMAS BUILT BUSES, INC. IS STRICTLY PROHIBITED. COPYRIGHT © 1997 THOMAS BUILT BUSES, INC.

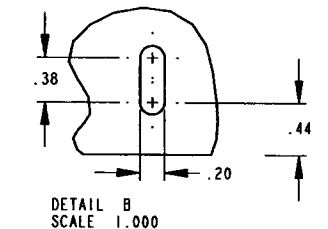
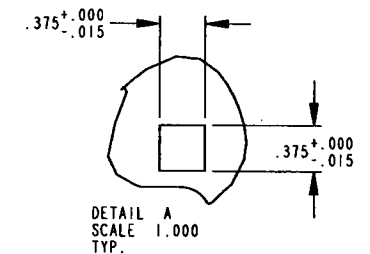


C		INACTIVE. REPLACED BY 52007526 **REV B ERN 57328-1**					
		4/6/05	CLB	MIG			
LET		REVISION	DATE	BY	CF		
THOMAS BUILT BUSES, INC. HIGH POINT, NC TOLERANCE UNLESS OTHERWISE NOTED							
THIRD ANGLE PROJECTION	DECIMAL ±	FRACTIONAL	ANGULAR				
	.XXX ±0.15	±1/32	±1°				
PANEL, PC BOARD MOUNT							
MINITOUR							
FORD DRW							
DRN. 3/26/04	CLB	MATERIAL: SEE NOTE #1	9				
CK'D 3/26/04	LNH	SIZE	DWG. NO. SHEET 2 OF 2				
ENGR/DESIGNER YYP		B	52007333				
0.250							

THIS DRAWING AND ALL INFORMATION PROVIDED WITH IT, IS THE PROPERTY OF THOMAS BUILT BUSES, INC. ANY REPRODUCTION OR DISTRIBUTION OF THIS MATERIAL, OR ANY PART WITHOUT WRITTEN PERMISSION OF THOMAS BUILT BUSES, INC. IS STRICTLY PROHIBITED. COPYRIGHT © 1997 THOMAS BUILT BUSES, INC.

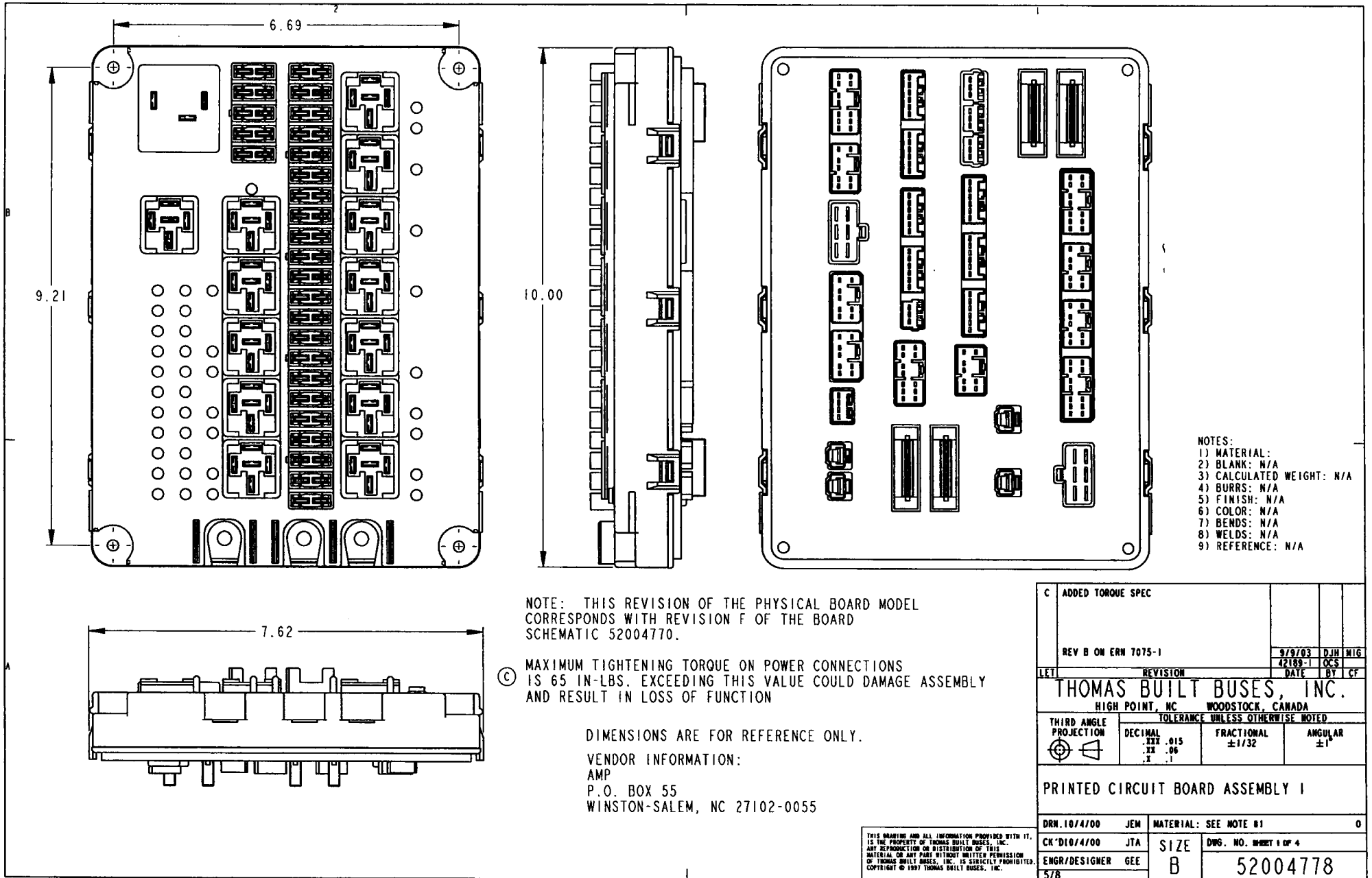


- NOTES:
- 1) MATERIAL: STEEL SPECIFICATION GALVANNEALED, ASTM A653, PER 68152352
 - 2) BLANK: 14 GA X (REFER TO FLAT PATTERN)
 - 3) CALCULATED WEIGHT: 6.073 LBF
 - 4) BURRS: REMOVE ALL BURRS.
 - 5) FINISH: BLACK EPOXY PRIMER PER 68001618
 - 6) COLOR: BLACK
 - 7) BENDS: ALL BENDS 90 (.06 ISR) UNLESS OTHERWISE SPECIFIED.
 - 8) WELDS: N/A
 - 9) REFERENCE: N/A
 - 10) ALTERNATIVE MATERIAL: STEEL SPECIFICATION GALVANIZED, CS, ASTM A653, PER 68001621



A RELEASED REPLACES 52007333.		4/6/05	CLB	MIG
LET	REVISION	DATE	BY	CF
THOMAS BUILT BUSES, INC.				
HIGH POINT, NC				
TOLERANCE UNLESS OTHERWISE NOTED				
THIRD ANGLE PROJECTION	DECIMAL ± .015	FRACTIONAL ± 1/32	ANGULAR ± 1°	
PANEL, PC BOARD MOUNT				
MINI TOUR				
FORD DRW				
DRW. 3/26/04	CLB	MATERIAL: SEE NOTE #1	6	
CK'D 03/26/04	LMH	SIZE B	DWG. NO. SHEET 1 OF 1	
ENGR/DESIGNER YTP			52007526	
D. 300				

THIS DRAWING AND ALL INFORMATION PROVIDED WITH IT, IS THE PROPERTY OF THOMAS BUILT BUSES, INC. ANY REPRODUCTION OR DISTRIBUTION OF THIS MATERIAL OR ANY PART WITHOUT WRITTEN PERMISSION OF THOMAS BUILT BUSES, INC. IS STRICTLY PROHIBITED. COPYRIGHT © 1997 THOMAS BUILT BUSES, INC.



C ADDED TORQUE SPEC				
REV B ON ERN 7075-1		9/9/03	DJH	MIG
LET	REVISION	42189-1	OCS	
THOMAS BUILT BUSES, INC.		DATE	BY	CF
HIGH POINT, NC		WOODSTOCK, CANADA		
THIRD ANGLE PROJECTION	TOLERANCE UNLESS OTHERWISE NOTED			
	DECIMAL	FRACTIONAL	ANGULAR	
	.XXX .015 .XX .06 .X .1	±1/32	±1	
PRINTED CIRCUIT BOARD ASSEMBLY 1				
DRN.10/4/00	JEM	MATERIAL: SEE NOTE B1		0
CK'D10/4/00	JTA	SIZE	DWG. NO. SHEET 1 OF 4	
ENGR/DESIGNER	GEE	B	52004778	
578				

THIS DRAWING AND ALL INFORMATION PROVIDED WITH IT, IS THE PROPERTY OF THOMAS BUILT BUSES, INC. ANY REPRODUCTION OR DISTRIBUTION OF THIS MATERIAL OR ANY PARTS WITHOUT WRITTEN PERMISSION OF THOMAS BUILT BUSES, INC. IS STRICTLY PROHIBITED. COPYRIGHT © 1997 THOMAS BUILT BUSES, INC.

BOARD #1 "BLUE"						
CONN	PIN	CIRCUIT CODE	WIRE COLOR	CIRCUIT DESCRIPTION	FUSE	RELAY
J1 BUZZER POWER				SHUNT 52004092		
	1	BATT+	N/A	BATTERY POWER		
	2	SA33	N/A	BUZZER+	FUSE #24 (5 AMP)	
	3	IGN+	N/A	IGNITION POWER		
J2 STEP LIGHT POWER				SHUNT 52004092		
	1	LM168	N/A	PARKING LIGHTS		
	2	-	N/A	TO STEP LIGHTS	FUSE #4 (10 AMP)	RELAY #2
	3	IGN+	N/A	IGNITION POWER		
J3 TO MAIN HARNESS				CONN P/N AMP# 173851-1		
	1	LR170A	BLUE	BACK-UP LIGHT FEED		
	2	LS38	PURPLE	STROBE LIGHT		
	3	SA30	TAN	BUZZER-		
	4	SA29	BLUE	REAR DOOR BUZZER		
	5	SA31	GRAY	SIDE DOOR BUZZER (GROUND)		
	6					
	7	FD34	GRAY	LEFT DEFROSTER FAN LOW		
	8	LD21	BLACK	FRONT INTERIOR (DOME) LIGHTS		
	9	GND	WHITE	GROUND		
	10	SA33	PINK	BUZZER+		
	11	F317	ORANGE	HATCH FAN		
	12	DS27	PINK	IDENTIFICATION SIGN		
J4 TO MAIN HARNESS (TAIL LIGHTS)				CONN P/N AMP# 173850-1		
	1	LR13	BLUE	RIGHT BACK-UP LIGHT		
	2	LR14	BLUE/WHITE	LEFT BACK-UP LIGHT		
	3	LB15	RED	RIGHT BRAKE LIGHT		
	4	LT10	YELLOW	LEFT TURN LIGHT		
	5	LT9	GREEN	RIGHT TURN LIGHT		
	6	LM12	BROWN/WHITE	LEFT TAIL LIGHT		
	7	LM11	BROWN	RIGHT TAIL LIGHT		
	8	LB16	RED/WHITE	LEFT BRAKE LIGHT		
J5 INPUT FROM CHASSIS TO BOARD #1				CONN P/N AMP# 173850-1		
	1	LM169	TAN	TAIL LIGHTS	FUSE #10 (15 AMP)	RELAY #8
	2	LB172	RED	BRAKE LIGHTS		
	3	LR170	BLUE	BACK-UP LIGHTS		
	4	SA32	YELLOW	STARTER INTERLOCK		
	5	LP70A	BLACK	PANEL LIGHTS FROM CHASSIS		
	6	KEY SW	BLACK	KEY SWITCH		RELAY #5
	7	LT175	GREEN	RIGHT TURN LIGHTS		
	8	LT174	YELLOW	LEFT TURN LIGHTS		
J6 TO MAIN HARNESS				CONN P/N AMP# 173851-1		
	1	LM40	BROWN	TO MARKER LIGHTS		
	2	LM17	BROWN	TO CLUSTER LIGHTS		
	3	MH468	ORANGE	TO HEATED MIRRORS		
	4	MH469	BLUE	TO HEATED MIRRORS		
	5	SA32	YELLOW	STARTER INTERLOCK		
	6	DF426	GREEN	TO FRONT DOOR SOLENOID		
	7	LD20	TAN	DRIVER'S DOME LIGHT		
	8	LD19	BLACK	REAR INTERIOR (DOME) LIGHTS		

BOARD #1 "BLUE"						
CONN	PIN	CIRCUIT CODE	WIRE COLOR	CIRCUIT DESCRIPTION	FUSE	RELAY
	9	FD35	TAN	RIGHT DEFROSTER FAN LOW		
	10	FD37	BLUE	RIGHT DEFROSTER FAN HIGH		
	11	FD36	BLACK	LEFT DEFROSTER FAN HIGH		
	12	AV599	PINK	TO VIDEO L.E.D.		
J7 TO FRONT HEATER				CONN P/N AMP# 171898-1		
	1	L-H-L	GRAY	LEFT HEATER LOW		
	2	D/H-L	BROWN	DEFROST/HEATER LOW		
	3	D-H-H	TAN	DRIVER'S HEATER HIGH		
	4	D/H-H	YELLOW	DEFROST/HEATER HIGH	FUSE #18 (20 AMP)	RELAY #11
	5	L-H-H	YELLOW	LEFT HEATER HIGH	FUSE #22 (20 AMP)	RELAY #12
	6	D-H-L	PURPLE	DRIVER'S HEATER LOW		
J8 FRONT PASSENGER HEATER LOW				CONN P/N AMP# 172128-1		
	1	-	RED/WHITE	FRONT PASSENGER HEATER LOW		
J9 REAR PASSENGER HEATER LOW				CONN P/N AMP# 172128-1		
	1	--	RED/WHITE	REAR PASSENGER HEATER LOW		
J10 DEFROSTER FAN SWITCH				CONN P/N AMP# 173850-1		
	1	FD35	TAN	RIGHT DEFROSTER FAN LOW		
	2	FD37	BLUE	RIGHT DEFROSTER FAN HIGH		
	3	FD34	GRAY	LEFT DEFROSTER FAN LOW		
	4	SW2+	BLUE	RIGHT FAN POWER	FUSE #16 (15 AMP)	
	5	SW1+	BLUE	LEFT FAN POWER	FUSE #17 (15 AMP)	
	6	FD36	BLACK	LEFT DEFROSTER FAN HIGH		
	7	GND	WHITE	GROUND		
	8	LP70	ORANGE	TO PANEL LIGHTS		

DRAWING NOTE: (REFERENCE)
TO VIEW THE TABLES ON SHEETS 2, 3 & 4
OF THIS DRAWING, USING PRO/ENGINEER,
THE DIAGRAM FILE: 52004778.DGM MUST
BE IN SESSION (OPEN).

THIS DRAWING AND ALL INFORMATION PROVIDED WITH IT,
IS THE PROPERTY OF THOMAS BUILT BUSES, INC.
ANY REPRODUCTION OR DISTRIBUTION OF THIS
DRAWING OR ANY PART WITHOUT WRITTEN PERMISSION
OF THOMAS BUILT BUSES, INC. IS STRICTLY PROHIBITED.
COPYRIGHT © 1997 THOMAS BUILT BUSES, INC.

C ADDED TORQUE SPEC				
REV B ON ERN 7075-1		9/9/03	DJH	MIG
		42189-1	OC5	
LET	REVISION	DATE	BY	CF
THOMAS BUILT BUSES, INC.				
HIGH POINT, NC		WOODSTOCK, CANADA		
THIRD ANGLE PROJECTION	TOLERANCE UNLESS OTHERWISE NOTED			
	DECIMAL XXX .015 XX .06 X .1	FRACTIONAL ±1/32	ANGULAR ±1°	
PRINTED CIRCUIT BOARD ASSEMBLY 1				
DRN.10/4/00	JEM	MATERIAL: SEE NOTE #1		0
CR'D10/4/00	JTA	SIZE	DWG. NO. SHEET 2 OF 4	
ENGR/DESIGNER	GE	B	52004778	
5/8				

BOARD #1 "BLUE"						
CONN	PIN	CIRCUIT CODE	WIRE COLOR	CIRCUIT DESCRIPTION	FUSE	RELAY
J11 VIDEO L.E.D. CONN P/N AMP# 174923-1						
1	IGN+	RED		IGNITION POWER	FUSE #25 (10 AMP)	
2	AVS99	PINK		TO VIDEO L.E.D.		
3	LP70	ORANGE		TO PANEL LIGHTS		
4	GND	WHITE		GROUND		
5						
6						
J12 TO INTERIOR LGTS/STEPWELL POWER+ CONN P/N AMP# 174923-1						
1	IGN+	RED		IGNITION POWER	FUSE #4 (10 AMP)	
2	-	PURPLE		TO STEPWELL RELAY #30+		RELAY #2
3	LP70	ORANGE		TO PANEL LIGHTS		
4	GND	WHITE		GROUND		
5	LD21	BLACK		FRONT INTERIOR (DOME) LIGHTS		
6	-	TAN		TO INTERIOR LIGHTS		
J13 HEATED MIRROR SWITCH CONN P/N AMP# 174923-1						
1						
2	-	YELLOW		MIRROR HEAT	FUSE #15 (15 AMP)	RELAY #10
3	LP70	ORANGE		TO PANEL LIGHTS		
4	GND	WHITE		GROUND		
5						
6	IGN+	RED		IGNITION POWER	FUSE #26 (10 AMP)	
J14 PANEL LIGHTS DIMMER CONN P/N AMP# 174921-1						
1	GND	WHITE		GROUND		
2	LP70	ORANGE		TO PANEL LIGHTS		
3	LP70A	BLACK		PANEL LIGHTS FROM CHASSIS		
J15 BUZZER LIGHT + MORE CONN P/N AMP# 174921-1						
1	SA33	PINK		BUZZER+	FUSE #24 (5AMP)	
2						
3	SA30	TAN		BUZZER-		
J16 WIPER POWER CONN P/N AMP# 174921-1						
1	IGN+	RED		IGNITION POWER	FUSE #7 (15 AMP)	
2	GND	WHITE		GROUND		
3	BATT+	GREEN		BATTERY POWER	FUSE #23 (10 AMP)	
J17 TO BOARD #3 CONN P/N AMP# 174923-1						
1						
2	LP70	ORANGE		TO PANEL LIGHTS		
3	SA504	TAN		BUZZER CIRCUIT		
4	DS27	PINK		IDENTIFICATION SIGN		
5	IGN+	RED		IGNITION POWER		RELAY #4
6	F317	ORANGE		HATCH FAN		
J18 DOOR SWITCH CONN P/N AMP# 174923-1						
1	DF426	GREEN		TO FRONT DOOR SOLENOID		
2	DF427	YELLOW		TO MANUAL FLASHER OVERRIDE		
3	BATT+	GREEN		BATTERY POWER	FUSE #5 (10 AMP)	
4	LP70	ORANGE		TO PANEL LIGHTS		
5	GND	WHITE		GROUND		
6	LW59	PINK		DOOR SWITCH SIGNAL (GROUND)		

BOARD #1 "BLUE"						
CONN	PIN	CIRCUIT CODE	WIRE COLOR	CIRCUIT DESCRIPTION	FUSE	RELAY
J19 TO STROBE CONN P/N AMP# 174923-1						
1	IGN+	RED		IGNITION POWER	FUSE #20 (10 AMP)	
2	RLY	YELLOW		RELAY SIGNAL	FUSE #11 (10 AMP)	RELAY #13
3	LP70	ORANGE		TO PANEL LIGHTS		
4	GND	WHITE		GROUND		
5	LW82	GRAY		STOP ARM SIGNAL		
6	LW168	BROWN		PARKING LIGHTS		
J20 MARKER / CLUSTER LIGHTS CONN P/N AMP# 174923-1						
1	LW168	BROWN		PARKING LIGHTS		
2	LW40	BROWN		TO MARKER LIGHTS		
3	LW17	BROWN		TO CLUSTER LIGHTS		
4	GND	WHITE		GROUND		
5	LP70	ORANGE		TO PANEL LIGHTS		
6	IGN+	RED		IGNITION POWER	FUSE #7 (10 AMP)	
J21 POWER OUTLET CONN P/N AMP# 174921-1						
1	BATT+	GREEN		BATTERY POWER	FUSE #27 (10 AMP)	
2	GND	WHITE		GROUND		
3						
J22 PASSENGER HEATERS CONN P/N AMP# 173851-1						
1	F-L	PURPLE		FRONT PASS HEATER LOW		
2	R-L	PINK		REAR PASS HEATER LOW		
3	IGN-R-P	BLUE		REAR PASS HEATER +	FUSE #8 (15 AMP)	
4	LP70	ORANGE		TO PANEL LIGHTS		
5	IGN-P	BLUE		PUMP+	FUSE #14 (10 AMP)	
6	R-P-H	YELLOW		REAR PASS HEATER HIGH	FUSE #19 (20 AMP)	RELAY #6
7	F-P-H	YELLOW		FRONT PASS HEATER HIGH	FUSE #21 (20 AMP)	RELAY #7
8						
9						
10	GND	WHITE		GROUND		
11	PUMP	TAN		PUMP		
12	IGN-F-P	BLUE		FRONT PASS HEATER +	FUSE #3 (15 AMP)	

C ADDED TORQUE SPEC			
REV B ON ERN 7075-1		9/9/03	DJH MEG
		42189-1	DCS
LET	REVISION	DATE	BY / CF
THOMAS BUILT BUSES, INC.			
HIGH POINT, NC WOODSTOCK, CANADA			
TOLERANCE UNLESS OTHERWISE NOTED			
THIRD ANGLE PROJECTION	DECIMAL .XXX .015 .XX .06 .X .1	FRACTIONAL ±1/32	ANGULAR ±1°
PRINTED CIRCUIT BOARD ASSEMBLY 1			
DRW. 10/4/00	JEM	MATERIAL: SEE NOTE #1	0
CK'D 10/4/00	JTA	SIZE	DWG. NO. SHEET 3 OF 4
ENGR/DESIGNER	GEE	B	52004778
5/8			

DRAWING NOTE: (REFERENCE)
TO VIEW THE TABLES ON SHEETS 2, 3 & 4
OF THIS DRAWING, USING PRO/ENGINEER,
THE DIAGRAM FILE: 52004778.DGM MUST
BE IN SESSION (OPEN).

THIS DRAWING AND ALL INFORMATION PROVIDED WITH IT,
IS THE PROPERTY OF THOMAS BUILT BUSES, INC.
ANY REPRODUCTION OR DISTRIBUTION OF THIS
MATERIAL OR ANY PART WITHOUT WRITTEN PERMISSION
OF THOMAS BUILT BUSES, INC. IS STRICTLY PROHIBITED.
COPYRIGHT © 1997 THOMAS BUILT BUSES, INC.

BOARD #1 "BLUE"						
CONN	PIN	CIRCUIT CODE	WIRE COLOR	CIRCUIT DESCRIPTION	FUSE	RELAY
J23 FRONT INTERIOR LIGHTS SHUNT 52004092						
	1	-	N/A	TO FRONT INTERIOR (DOME) LIGHTS		
	2	--	N/A	FROM RELAY #		
	3					
J24 REAR INTERIOR LIGHTS SHUNT 52004092						
	1	-	N/A	TO REAR INTERIOR (DOME) LIGHTS		
	2	--	N/A	FROM RELAY #		
	3					
J25 FRONT PASSENGER HEATER HIGH CONN P/N AMP# 172128-1						
	1	-	GREEN/BLACK	FRONT PASSENGER HEATER HIGH	FUSE #21 (20AMP)	RELAY #7
J26 REAR PASSENGER HEATER HIGH CONN P/N AMP# 172128-1						
	1	--	GREEN/BLACK	REAR PASSENGER HEATER HIGH	FUSE #19 (20 AMP)	RELAY #6
J27 NOISE SUPPRESSION SWITCH CONN P/N AMP# 174922-1						
	1	RLY	YELLOW	RELAY SIGNAL		RELAY #9
	2	GND	WHITE	GROUND		
	3	IGN+	RED	IGNITION POWER	FUSE #20 (10 AMP)	
	4	LP70	ORANGE	TO PANEL LIGHTS		
J28 TO BOARD #2 CONN P/N AMP# 173850-1						
	1	GND	WHITE	GROUND		
	2	LW82	GRAY	STOP ARM SIGNAL		
	3	LP70	ORANGE	TO PANEL LIGHTS		
	4	SW+	BLUE	SWITCH POWER		
	5	DF427	YELLOW	TO MANUAL FLASHER OVERRIDE		
	6	IGN+	RED	IGNITION POWER		
	7	LR170A	BLUE	BACK-UP LIGHT FEED		
	8	LW59	PINK	DOOR SWITCH SIGNAL (GROUND)		
J29 TO BUS FRONT HARNESS CONN P/N AMP# 173850-1						
	1	MH470	ORANGE	HEATED MIRROR		
	2	PUMP	TAN	PUMP		
	3	LM168	BROWN	PARKING LIGHTS		
	4					
	5	LE74	BLUE	STEPWELL LIGHTS		
	6	LT175	GREEN	RIGHT TURN LIGHTS		
	7	LT174	YELLOW	LEFT TURN LIGHTS		
	8	LW59	PINK	DOOR SWITCH SIGNAL (GROUND)		
J30 INTERIOR LIGHT DIMMER CONN P/N AMP# 171898-1						
	1	LD19	BLACK	REAR INTERIOR (DOME) LIGHTS		
	2	LD21	BLACK	FRONT INTERIOR (DOME) LIGHTS		
	3	GND	WHITE	GROUND		
	4	LD19A	TAN	FROM REAR DOME LIGHTS RELAY	FUSE #12 (15 AMP)	RELAY #3
	5	LD21A	TAN	FROM FRONT DOME LIGHTS RELAY	FUSE #9 (15 AMP)	RELAY #4
	6	GND	WHITE	GROUND		
J31 INTERIOR LIGHT SWITCHES & BRAKE LIGHT CONN P/N AMP# 173850-1						
	1	LD20	TAN	DRIVER'S DOME LIGHT		
	2	GND	WHITE	GROUND		
	3	LP70	ORANGE	TO PANEL LIGHTS		
	4	LD19	YELLOW	REAR INTERIOR (DOME) LIGHTS	FUSE #12 (15 AMP)	RELAY #4

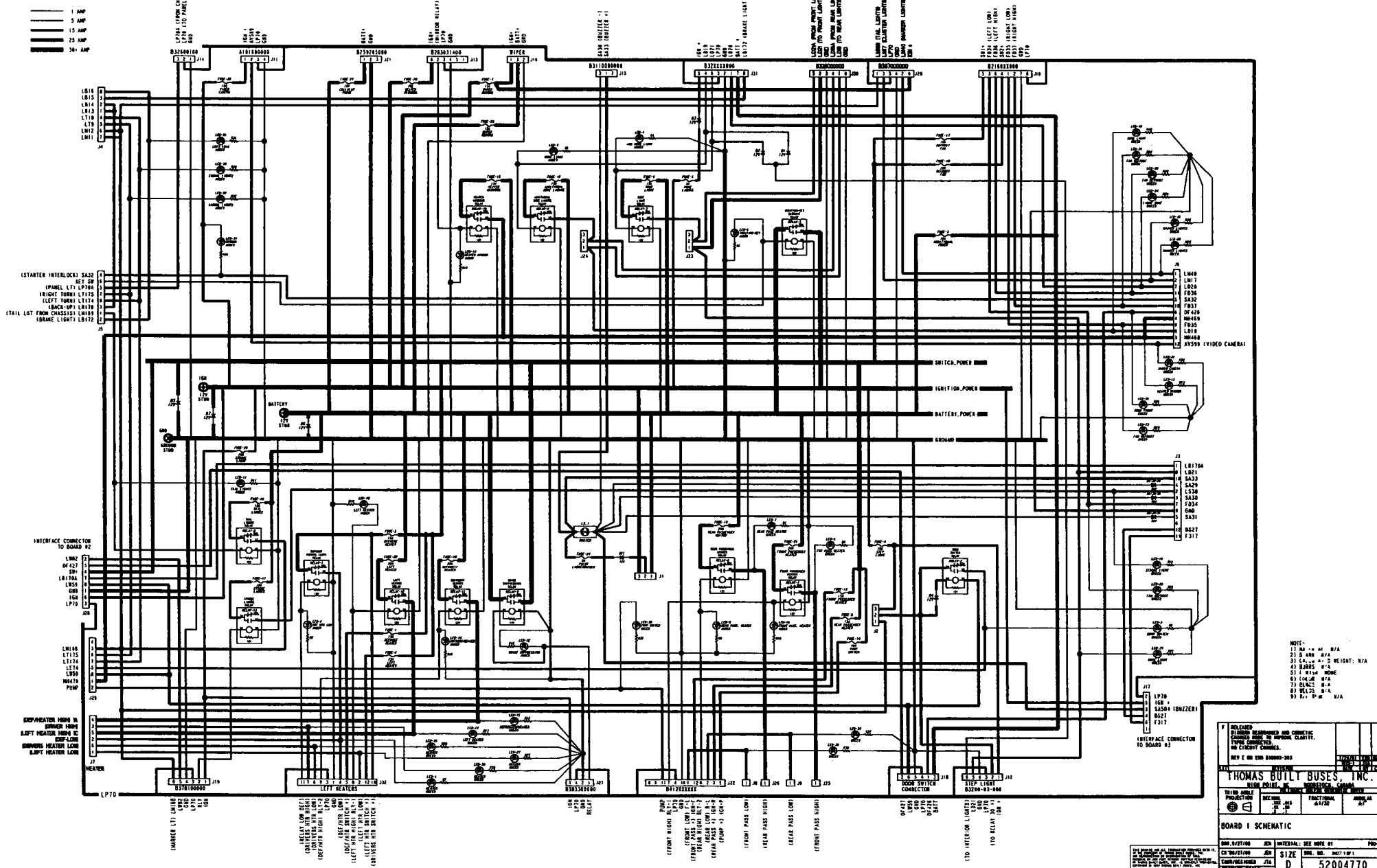
BOARD #1 "BLUE"						
CONN	PIN	CIRCUIT CODE	WIRE COLOR	CIRCUIT DESCRIPTION	FUSE	RELAY
	5	IGN+	RED	IGNITION POWER	FUSE #6 (5 AMP)	
	6	LD21	YELLOW	FRONT INTERIOR (DOME) LIGHTS	FUSE #9 (15 AMP)	RELAY #3
	7	BATT+	GREEN	BATTERY POWER	FUSE #5 (10 AMO)	
	8	LB172	RED	BRAKE LIGHTS		
J32 LEFT HEATER SWITCH CONN P/N AMP# 173851-1						
	1	GND	WHITE	GROUND		
	2	L-H-L	GRAY	LEFT HEATER LOW		
	3	LP70	ORANGE	TO PANEL LIGHTS		
	4	D/H-L	BROWN	DEFROST/HEATER LOW		
	5	D/H-P	BLUE	DEFROST/HEATER SWITCH +	FUSE #1 (15 AMP)	
	6	D-H-L	PURPLE	DRIVER'S HEATER LOW		
	7	D-H-H	TAN	DRIVER'S HEATER HIGH		
	8	L-H-H	YELLOW	LEFT HEATER HIGH	FUSE #22 (20 AMP)	RELAY #12
	9	D/H-H	YELLOW	DEFROST/HEATER HIGH	FUSE #18 (20 AMP)	RELAY #11
	10	D-H-P	BLUE	DRIVER'S HEATER SWITCH +	FUSE #3 (15 AMP)	
	11	L-1SW	BLACK	RELAY LOW DEFROST		RELAY #1
	12	L-H-P	BLUE	LEFT HEATER SWITCH +	FUSE #2 (15 AMP)	

DRAWING NOTE: (REFERENCE)
TO VIEW THE TABLES ON SHEETS 2, 3 & 4
OF THIS DRAWING, USING PRO/ENGINEER,
THE DIAGRAM FILE: 52004778.DGM MUST
BE IN SESSION (OPEN).

THIS DRAWING AND ALL INFORMATION PROVIDED WITH IT,
IS THE PROPERTY OF THOMAS BUILT BUSES, INC.
ANY REPRODUCTION OR DISTRIBUTION OF THIS
MATERIAL OR ANY PART WITHOUT WRITTEN PERMISSION
OF THOMAS BUILT BUSES, INC. IS STRICTLY PROHIBITED.
COPYRIGHT © 1997 THOMAS BUILT BUSES, INC.

C	ADDED TORQUE SPEC			
	REV B ON ERN 7075-1	9/9/03	DJH	MIG
LET	REVISION	42189-1	OC5	
		DATE	BY	CF
THOMAS BUILT BUSES, INC.				
HIGH POINT, NC WOODSTOCK, CANADA				
THIRD ANGLE PROJECTION	TOLERANCE UNLESS OTHERWISE NOTED			
	DECIMAL	FRACTIONAL	ANGULAR	
	.XXX .015	±1/32	±1°	
	.XX .06			
	.X .1			
PRINTED CIRCUIT BOARD ASSEMBLY 1				
DRN.10/4/00	JEM	MATERIAL: SEE NOTE #1		0
CK'D10/4/00	JTA	SIZE	DWS. NO. SHEET 4 OF 4	
ENGR/DESIGNER	GEE	B	52004778	
		5/8		

NUMBER 1 BOARD



RELEASED
 CHECKED BY: []
 DESIGNED BY: []
 DRAWN BY: []
 DATE: []

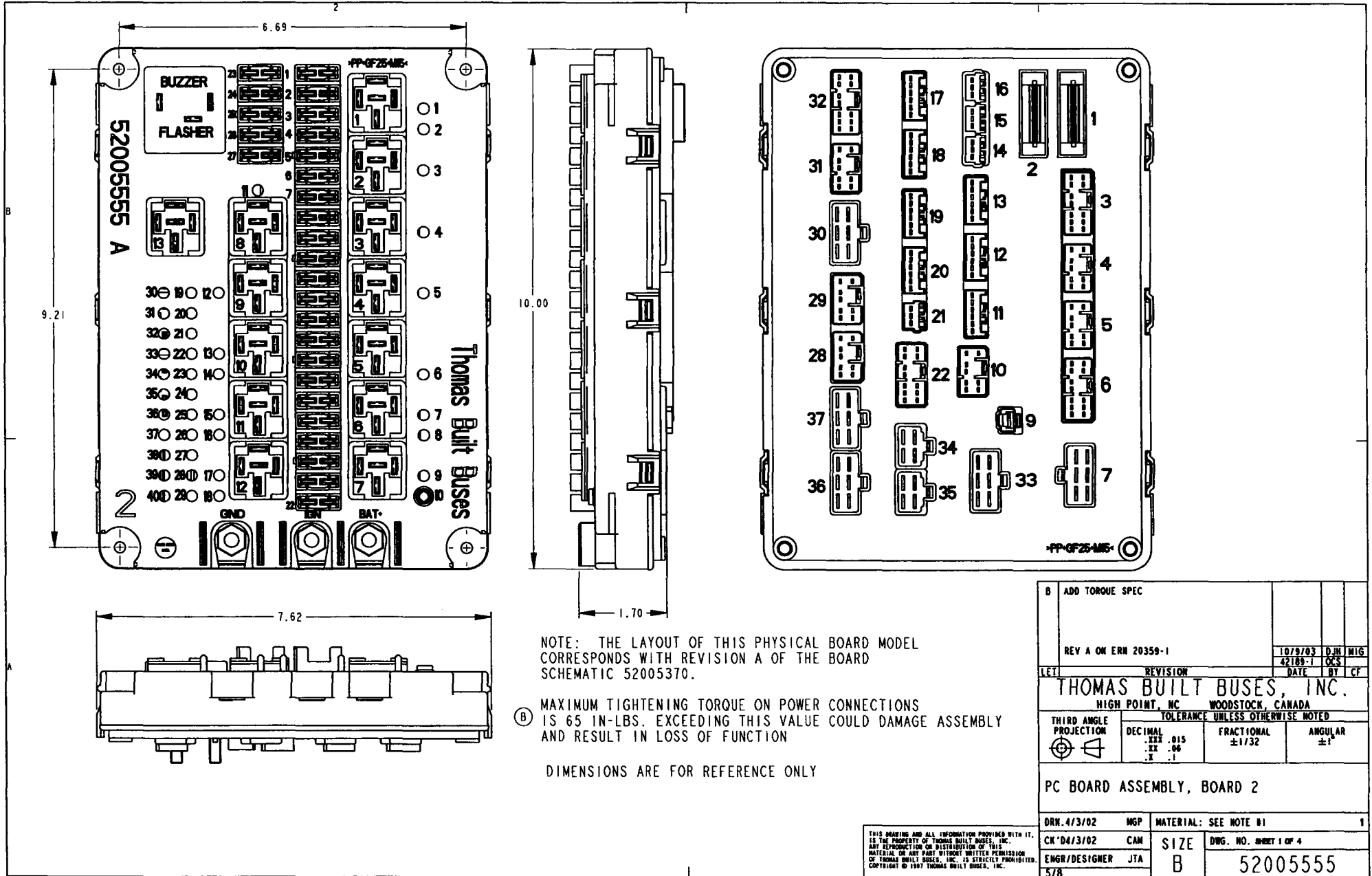
THOMAS BUILT BUSES, INC.
 1000 W. 10th St., Lincoln, NE 68502
 (402) 441-1111

PROJ. NO.	REV. NO.	DATE	BY
52004770	01	01/11/01	JWA

BOARD 1 SCHEMATIC

DATE	SIZE	DRW. NO.	REV. NO.
01/11/01	D	52004770	01

52004770



NOTE: THE LAYOUT OF THIS PHYSICAL BOARD MODEL CORRESPONDS WITH REVISION A OF THE BOARD SCHEMATIC 52005370.

(B) MAXIMUM TIGHTENING TORQUE ON POWER CONNECTIONS IS 65 IN-LBS. EXCEEDING THIS VALUE COULD DAMAGE ASSEMBLY AND RESULT IN LOSS OF FUNCTION

DIMENSIONS ARE FOR REFERENCE ONLY

B ADD TORQUE SPEC				
REV A ON ERN 20359-1		10/29/03	D.H. MIG	
LET	REVISION	42189-1	OCS	
THOMAS BUILT BUSES, INC.		DATE	BY	CF
HIGH POINT, NC		WOODSTOCK, CANADA		
TOLERANCE UNLESS OTHERWISE NOTED				
THIRD ANGLE PROJECTION	DECIMAL XX .015 .XX .06 .X .1	FRACTIONAL ±1/32	ANGULAR ±1	
PC BOARD ASSEMBLY, BOARD 2				
DRN. 4/3/02	MGP	MATERIAL: SEE NOTE B1		1
CK'D 4/3/02	CAN	SIZE	DWG. NO. SHEET 1 OF 4	
ENGR/DESIGNER JTA		B	52005555	
5/8				

THIS DRAWING AND ALL INFORMATION PROVIDED WITH IT, IS THE PROPERTY OF THOMAS BUILT BUSES, INC. ANY REPRODUCTION OR DISTRIBUTION OF THIS MATERIAL OR ANY PART WITHOUT WRITTEN PERMISSION OF THOMAS BUILT BUSES, INC. IS STRICTLY PROHIBITED. COPYRIGHT © 1997 THOMAS BUILT BUSES, INC.

BOARD #2 "RED"

CONN	PIN	CIRCUIT CODE	WIRE COLOR	CIRCUIT DESCRIPTION	FUSE	RELAY
J1 STOP ARM POWER SHUNT 52004092						
	1	IGN+	N/A	IGNITION POWER		
	2	TO FUSE	N/A	STOP ARM POWER	FUSE #7 (10 AMP)	
	3	BATTERY	N/A	BATTERY POWER		
J4 RIGHT/STEP HEATER SWITCH CONN P/N AMP# 173850-1						
	1	RLY 1	YELLOW	RIGHT HEATER HIGH	FUSE #18 (20 AMP)	RELAY #6
	2	RLY 2	YELLOW	DEFROST/HEATER HIGH	FUSE #20 (20 AMP)	RELAY #7
	3	POW 1	BLUE	SWITCH +	FUSE #9 (15 AMP)	RELAY #12
	4	GND	WHITE	GROUND		
	5	LP70	ORANGE	TO PANEL LIGHTS		
	6	LOW 1	TAN	RIGHT HEATER LOW		
	7	POW 2	BLUE	SWITCH +	FUSE #10 (15 AMP)	
	8	LOW 2	BLACK	DEFROST/HEATER LOW		
J6 WARNING LIGHT FLASHER CONN P/N AMP# 173851-1						
	1	LW56	RED	WARNING LIGHT (RED)		
	2	LW149	ORANGE	FLASHER POWER FROM RELAY		RELAY #11
	3	LW149	ORANGE	FLASHER POWER FROM RELAY		RELAY #11
	4	LW55	YELLOW	WARNING LIGHT (AMBER)		
	5	LW58	YELLOW	WARNING LIGHT (AMBER)		
	6	LW82	GRAY	STOP ARM SIGNAL		
	7	LW59	PINK	DOOR SWITCH SIGNAL (GROUND)		
	8	LW81	PURPLE	DOOR OPEN (ACTIVE LOW)		
	9	LAMP	BLUE	LAMP LIGHT		
	10	LW57	RED	WARNING LIGHT (RED)		
	11	LW80	TAN	FLASHER START SWITCH +12V		
	12	GND	WHITE	GROUND		
J7 SPARE FUSE CONN P/N AMP# 171898-1						
	1	SWITCH+	-	SWITCH POWER	FUSE #11 (20 AMP)	
	2	SWITCH+	-	SWITCH POWER	FUSE #8 (20 AMP)	
	3	BATT+	-	BATTERY POWER	FUSE #12 (20 AMP)	
	4	IGN+	-	IGNITION POWER	FUSE #19 (20 AMP)	
	5	IGN+	-	IGNITION POWER	FUSE #21 (20 AMP)	
	6	IGN+	-	IGNITION POWER	FUSE #22 (20 AMP)	
J9 WARNING FLASHER/SWITCH POWER CONN P/N AMP# 172128-1						
	1	BATT+	GREEN	BATTERY POWER	FUSE #17 (20 AMP)	
J11 SPARE SWITCH IGNITION POWER CONN P/N AMP# 174923-1						
	1	IGN+	RED	IGNITION POWER	FUSE #25 (10 AMP)	
	2	-	-	-		
	3	LP70	ORANGE	TO PANEL LIGHTS		
	4	GND	WHITE	GROUND		
	5	-	-	-		
	6	-	-	-		
J12 SPARE SWITCH IGNITION POWER CONN P/N AMP# 174923-1						
	1	IGN+	RED	IGNITION POWER	FUSE #23 (10 AMP)	
	2	-	-	-		
	3	LP70	ORANGE	TO PANEL LIGHTS		
	4	GND	WHITE	GROUND		
	5	-	-	-		
	6	-	-	-		

BOARD #2 "RED"

CONN	PIN	CIRCUIT CODE	WIRE COLOR	CIRCUIT DESCRIPTION	FUSE	RELAY
J13 DEACTIVATION CROSSING ARM SWITCH CONN P/N AMP# 174923-1						
	1	-	-	-		
	2	LP70	ORANGE	TO PANEL LIGHTS		
	3	-	-	-		
	4	GND	WHITE	GROUND		
	5	RLY	YELLOW	RELAY SIGNAL	FUSE #2 (5 AMP)	RELAY #1
	6	IGN+	RED	IGNITION POWER	FUSE #6 (7 AMP)	
J15 POWER FOR LIGHT MONITOR CONN P/N AMP# 174921-1						
	1	-	BLUE	FOR BACK-UP LIGHTS	FUSE #13 (10 AMP)	RELAY #9
	2	IGN+	RED	IGNITION POWER	FUSE #5 (10 AMP)	
	3	GND	WHITE	GROUND		
J16 MANUAL OVERRIDE SWITCH CONN P/N AMP# 174921-1						
	1	GND	WHITE	GROUND		
	2	LP70	ORANGE	TO PANEL LIGHTS		
	3	RLY	YELLOW	RELAY SIGNAL		RELAYS #3 & #5
J17 SPARE SWITCH POWER SWITCH CONN P/N AMP# 174923-1						
	1	SWITCH+	RED	SWITCH POWER	FUSE #4 (10 AMP)	
	2	-	-	-		
	3	LP70	ORANGE	TO PANEL LIGHTS		
	4	GND	WHITE	GROUND		
	5	-	-	-		
	6	-	-	-		
J18 SPARE SWITCH POWER SWITCH CONN P/N AMP# 174923-1						
	1	SWITCH+	RED	SWITCH POWER	FUSE #26 (10 AMP)	
	2	-	-	-		
	3	LP70	ORANGE	TO PANEL LIGHTS		
	4	GND	WHITE	GROUND		
	5	-	-	-		
	6	-	-	-		

DRAWING NOTE: (REFERENCE)
TO VIEW THE TABLES ON SHEETS 2-4
OF THIS DRAWING, USING PRO/ENGINEER,
THE DIAGRAM FILE: 5200555.DGM MUST
BE IN SESSION (OPEN).

THIS DRAWING AND ALL INFORMATION PROVIDED WITH IT
IS THE PROPERTY OF THOMAS BUILT BUSES, INC.
ANY REPRODUCTION OR DISTRIBUTION OF THIS
MATERIAL ON ANY PART WITHOUT WRITTEN PERMISSION
OF THOMAS BUILT BUSES, INC. IS STRICTLY PROHIBITED.
COPYRIGHT © 1997 THOMAS BUILT BUSES, INC.

B ADD TORQUE SPEC				
REV A ON ERN 20359-1		10/9/03	DJH	MIG
		42189-1	OC	
LET	REVISION	DATE	BY	CF
THOMAS BUILT BUSES, INC.				
HIGH POINT, NC		WOODSTOCK, CANADA		
TOLERANCE UNLESS OTHERWISE NOTED				
THIRD ANGLE PROJECTION	DECIMAL .XXX .015 .XX .06 .X .1	FRACTIONAL ±1/32	ANGULAR ±1°	
PC BOARD ASSEMBLY, BOARD 2				
DRN. 4/3/02	MGP	MATERIAL: SEE NOTE #1		1
CK '04/3/02	CAM	SIZE	DWG. NO. SHEET 2 OF 4	
ENGR/DESIGNER	JTA	B	5200555	
11/32				

BOARD #2 "RED"						
CONN	PIN	CIRCUIT CODE	WIRE COLOR	CIRCUIT DESCRIPTION	FUSE	RELAY
J19 SPARE SWITCH IGNITION POWER CONN P/N AMP# 174923-1						
	1	IGN+	RED	IGNITION POWER	FUSE #27 (10 AMP)	
	2	-	-			
	3	LP70	ORANGE	TO PANEL LIGHTS		
	4	GND	WHITE	GROUND		
	5	-	-			
	6	-	-			
J20 SPARE SWITCH BATTERY POWER CONN P/N AMP# 174923-1						
	1	BATT+	RED	BATTERY POWER	FUSE #15 (10 AMP)	
	2	-	-			
	3	LP70	ORANGE	TO PANEL LIGHTS		
	4	GND	WHITE	GROUND		
	5	-	-			
	6	-	-			
J21 RADIO POWER CONN P/N AMP# 174921-1						
	1	IGN+	WHITE	GROUND		
	2	SW+	BLUE	SWITCH POWER	FUSE #24 (10 AMP)	
	3	BATT+	RED	BATTERY POWER	FUSE #16 (10 AMP)	
J22 WARNING LIGHT SWITCHES CONN P/N AMP# 173851-1						
	1	LW81	PURPLE	DOOR OPEN (ACTIVE LOW)		
	2	LW56	RED	WARNING LIGHT (RED)		
	3	LAMP	BLUE	LAMP LIGHT		
	4	BK1	BLACK	SIGNAL FROM SWITCH TO RELAY		RELAY #11
	5	LW58	YELLOW	WARNING LIGHT (AMBER)		
	6	LW59	PINK	DOOR SWITCH SIGNAL (GROUND)		
	7	GND	WHITE	GROUND		
	8	LP70	ORANGE	TO PANEL LIGHTS		
	9	LW57	RED	WARNING LIGHT (RED)		
	10	LW55	YELLOW	WARNING LIGHT (AMBER)		
	11	LW80	TAN	FLASHER START SWITCH +12V		
	12	IGN+	RED	IGNITION POWER	FUSE #14 (10 AMP)	
J28 FROM BOARD #1 CONN P/N AMP# 173850-1						
	1	GND	WHITE	GROUND		
	2	LW82	GRAY	STOP ARM SIGNAL		
	3	LP70	ORANGE	TO PANEL LIGHTS		
	4	SW+	BLUE	SWITCH POWER		RELAY #12
	5	DF427	YELLOW	TO MANUAL FLASHER OVERRIDE		
	6	IGN+	RED	IGNITION POWER		RELAY #10
	7	LR170A	BROWN	BACK-UP LIGHT FEED		
	8	LW59	PINK	DOOR SWITCH SIGNAL (GROUND)		

BOARD #2 "RED"						
CONN	PIN	CIRCUIT CODE	WIRE COLOR	CIRCUIT DESCRIPTION	FUSE	RELAY
J30 STEP HEATERS AND CROSSING ARM CONN P/N AMP# 171898-1						
	1	HS120	PINK	DEFROST/HEATER LOW		
	2	HS122	GRAY	RIGHT HEATER LOW		
	3	CA443	YELLOW	CROSSING ARM		
	4	HS121	PURPLE	DEFROST/HEATER HIGH	FUSE #20 (20 AMP)	RELAY #7
	5	HS123	BLUE	RIGHT HEATER HIGH	FUSE #18 (20 AMP)	RELAY #6
	6	-	-			
J32 SPARE RELAYS #2 AND #8 CONN P/N AMP# 173851-1						
	1	#8 87a				
	2	#8 86				
	3	#8 30				
	4	#8 85				
	5	#8 87				
	6	#2 30				
	7	#2 85				
	8	#2 86				
	9	#2 87a				
	10	#2 87				
	11	IGN+	RED	IGNITION POWER	FUSE #3 (10 AMP)	
	12	BATT+	GREEN	BATTERY POWER	FUSE #1 (10 AMP)	
J33 TO LIGHT MONITOR CONN P/N AMP# 171898-1						
	1	LW56	RED	WARNING LIGHT (RED)		
	2	LW2	BROWN	RIGHT FRONT WARNING LIGHT (RED)		
	3	LW1	BLACK	LEFT REAR WARNING LIGHT (RED)		
	4	LW3	ORANGE	RIGHT REAR WARNING LIGHT (RED)		
	5	LW4	YELLOW	LEFT FRONT WARNING LIGHT (RED)		
	6	LW57	RED	WARNING LIGHT (RED)		

DRAWING NOTE: (REFERENCE)
 TO VIEW THE TABLES ON SHEETS 2-4
 OF THIS DRAWING, USING PRO/ENGINEER,
 THE DIAGRAM FILE: 52005555.DGM MUST
 BE IN SESSION (OPEN).

B ADD TORQUE SPEC				
REV A ON ERN 20359-1		18/9/03	DJM	MIG
LET REVISION		42189-1	OC	CF
THOMAS BUILT BUSES, INC. HIGH POINT, NC WOODSTOCK, CANADA				
THIRD ANGLE PROJECTION	TOLERANCE UNLESS OTHERWISE NOTED			
	DECIMAL	FRACTIONAL	ANGULAR	
	.XXX .015 .XX .06 .X .1	±1/32	±1°	
PC BOARD ASSEMBLY, BOARD 2				
DRN. 4/3/02	MGP	MATERIAL: SEE NOTE #1		1
CK'D 04/3/02	CAM	SIZE	DWG. NO. SHEET 3 OF 4	
ENGR/DESIGNER	JTA	B	52005555	
11732				

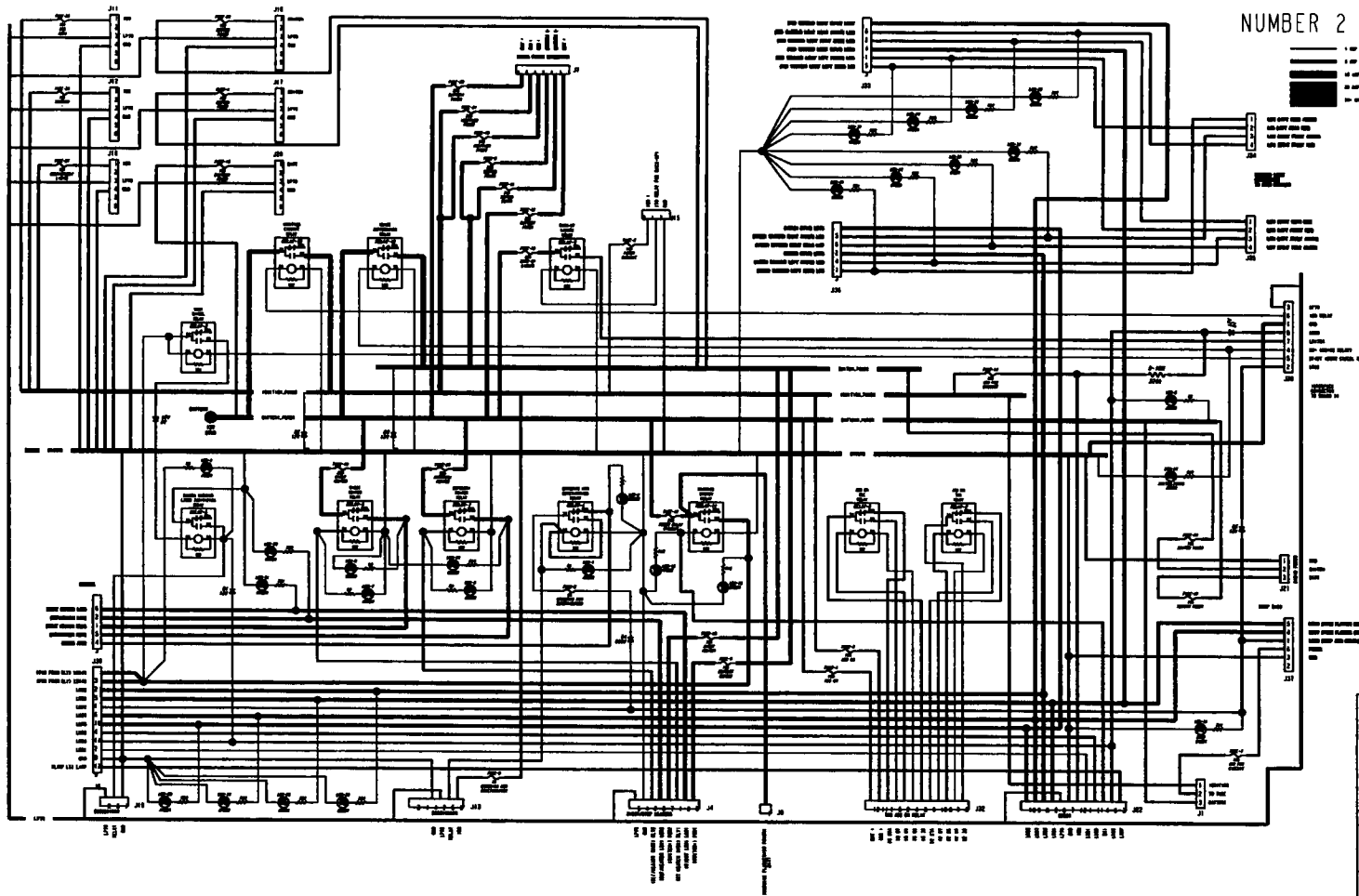
THIS DRAWING AND ALL INFORMATION PROVIDED WITH IT,
 IS THE PROPERTY OF THOMAS BUILT BUSES, INC.
 ANY REPRODUCTION OR DISTRIBUTION OF THIS
 MATERIAL OR ANY PART WITHOUT WRITTEN PERMISSION
 OF THOMAS BUILT BUSES, INC. IS STRICTLY PROHIBITED.
 COPYRIGHT © 1997 THOMAS BUILT BUSES, INC.

BOARD #2 "RED"						
CONN	PIN	CIRCUIT CODE	WIRE COLOR	CIRCUIT DESCRIPTION	FUSE	RELAY
J34		TO MAIN HARNESS		CONN P/N AMP# 172134-1		
	1	LW5	BLUE	LEFT REAR WARNING LIGHT (AMBER)		
	2	LW1	BLACK	LEFT REAR WARNING LIGHT (RED)		
	3	LW6	WHITE	RIGHT FRONT WARNING LIGHT (AMBER)		
	4	LW2	BROWN	RIGHT FRONT WARNING LIGHT (RED)		
J35		TO MAIN HARNESS		CONN P/N AMP# 172134-1		
	1	LW3	ORANGE	RIGHT REAR WARNING LIGHT (RED)		
	2	LW4	YELLOW	LEFT FRONT WARNING LIGHT (RED)		
	3	LWB	GREEN	LEFT FRONT WARNING LIGHT (AMBER)		
	4	LW7	RED	RIGHT REAR WARNING LIGHT (AMBER)		
J36		TO LIGHT MONITOR		CONN P/N AMP# 171898-1		
	1	LWB	GREEN	LEFT FRONT WARNING LIGHT (AMBER)		
	2	LW7	RED	RIGHT REAR WARNING LIGHT (AMBER)		
	3	LW5	BLUE	LEFT REAR WARNING LIGHT (AMBER)		
	4	LW5B	YELLOW	WARNING LIGHT (AMBER)		
	5	LW55	YELLOW	WARNING LIGHT (AMBER)		
	6	LW6	WHITE	RIGHT FRONT WARNING LIGHT (AMBER)		
J37		STOP SIGN		CONN P/N AMP# 171898-1		
	1	LWB2	GRAY	STOP ARM SIGNAL		
	2					
	3	GND	WHITE	GROUND		
	4	LW56	RED	WARNING LIGHT (RED)		
	5	LW57	RED	WARNING LIGHT (RED)		
	6	POW	GREEN	POWER FROM FUSE	FUSE #7 (10 AMP)	

DRAWING NOTE: (REFERENCE)
 TO VIEW THE TABLES ON SHEETS 2-4
 OF THIS DRAWING, USING PRO/ENGINEER,
 THE DIAGRAM FILE: 5200555.DGM MUST
 BE IN SESSION (OPEN).

B	ADD TORQUE SPEC			
REV A ON ERN 20359-1		10/9/03	DJM	MIG
		42189-1	OCS	
LET	REVISION	DATE	BY	CF
THOMAS BUILT BUSES, INC. HIGH POINT, NC WOODSTOCK, CANADA				
TOLERANCE UNLESS OTHERWISE NOTED				
THIRD ANGLE PROJECTION	DECIMAL .XXX .015 .XX .06 .X .1	FRACTIONAL ±1/32	ANGULAR ±1°	
PC BOARD ASSEMBLY, BOARD 2				
DRN 4/3/02	MGP	MATERIAL: SEE NOTE #1		1
CK'D 4/3/02	CAM	SIZE	DWG. NO. SHEET 4 OF 4	
ENGR/DESIGNER	JTA	B	5200555	
578				

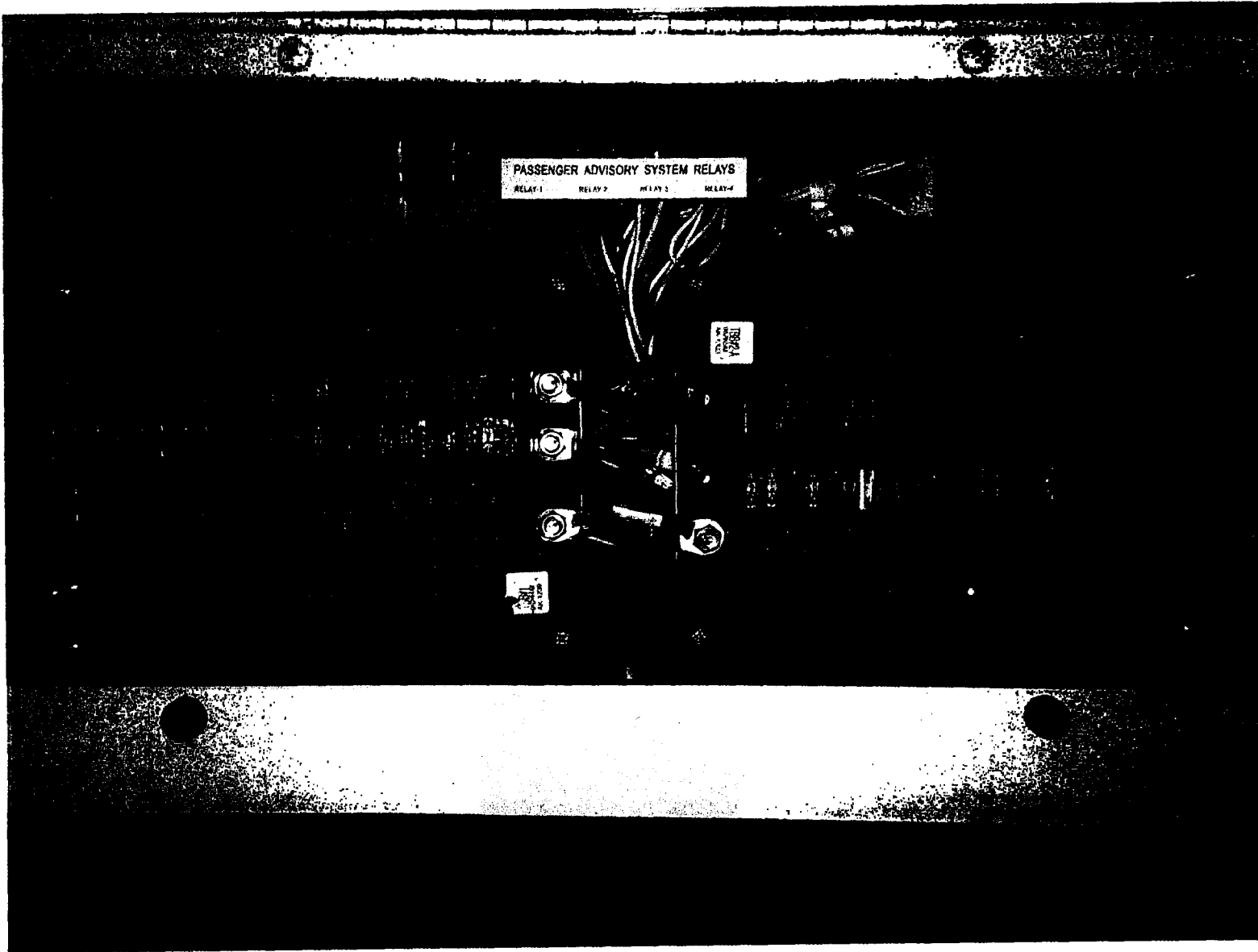
THIS DRAWING AND ALL INFORMATION PROVIDED WITH IT,
 IS THE PROPERTY OF THOMAS BUILT BUSES, INC.
 ANY REPRODUCTION OR DISTRIBUTION OF THIS
 MATERIAL OR ANY PART WITHOUT WRITTEN PERMISSION
 OF THOMAS BUILT BUSES, INC. IS STRICTLY PROHIBITED.
 COPYRIGHT © 1997 THOMAS BUILT BUSES, INC.



NUMBER 2 BOARD

A		RELEASED					
				4/17/02	OCS	MIG	
				20358-1	JTA		
LET		REVISION		DATE	BY	CF	
THOMAS BUILT BUSES, INC.							
HIGH POINT, NC				WOODSTOCK, CANADA			
TOLERANCE UNLESS OTHERWISE NOTED							
THIRD ANGLE PROJECTION	DECIMAL	FRACTIONAL	ANGULAR				
	.XXX .015 .XX .06 .X .1	±1/32	±1°				
PC BOARD SCHEMATIC, BOARD 2							
DRN. 4/17/02	OCS	MATERIAL: SEE NOTE #1				PRO-E	
CK'D 4/17/02	JTA	SIZE	DWG. NO. SHEET 1 OF 1				
ENGR/DESIGNER	OCS	B	52005370				
DRAWING SCALE							

THIS DRAWING AND ALL INFORMATION PROVIDED WITH IT, IS THE PROPERTY OF THOMAS BUILT BUSES, INC. ANY REPRODUCTION OR DISTRIBUTION OF THIS MATERIAL OR ANY PART WITHOUT WRITTEN PERMISSION OF THOMAS BUILT BUSES, INC. IS STRICTLY PROHIBITED. COPYRIGHT © 1997 THOMAS BUILT BUSES, INC.





QUALITY ALERT

A Subsidiary of **FREIGHTLINER**
LLC

Plant:	9
Number:	93-1
Station:	9200RE
Issued By:	Carlos Roseboro
Date:	10/27/2006

ORIGIN: Minotour
Inspection

REQUIRED: Ensure all
screws are installed @
Minotour electrical
panel to brackets @
rafters & base of
electrical compartment.

Form B014-13 Effective Date: 5/23/05

