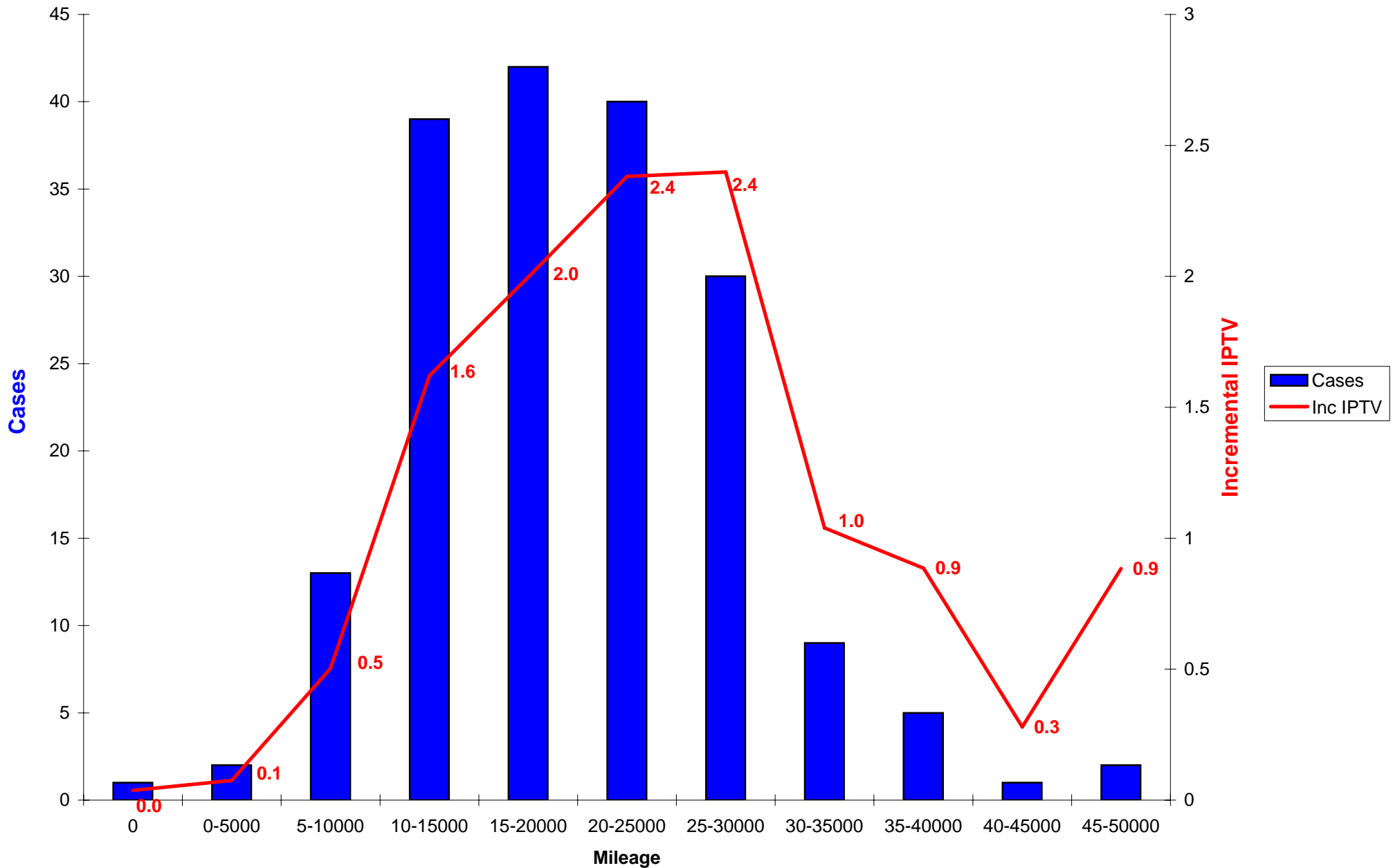
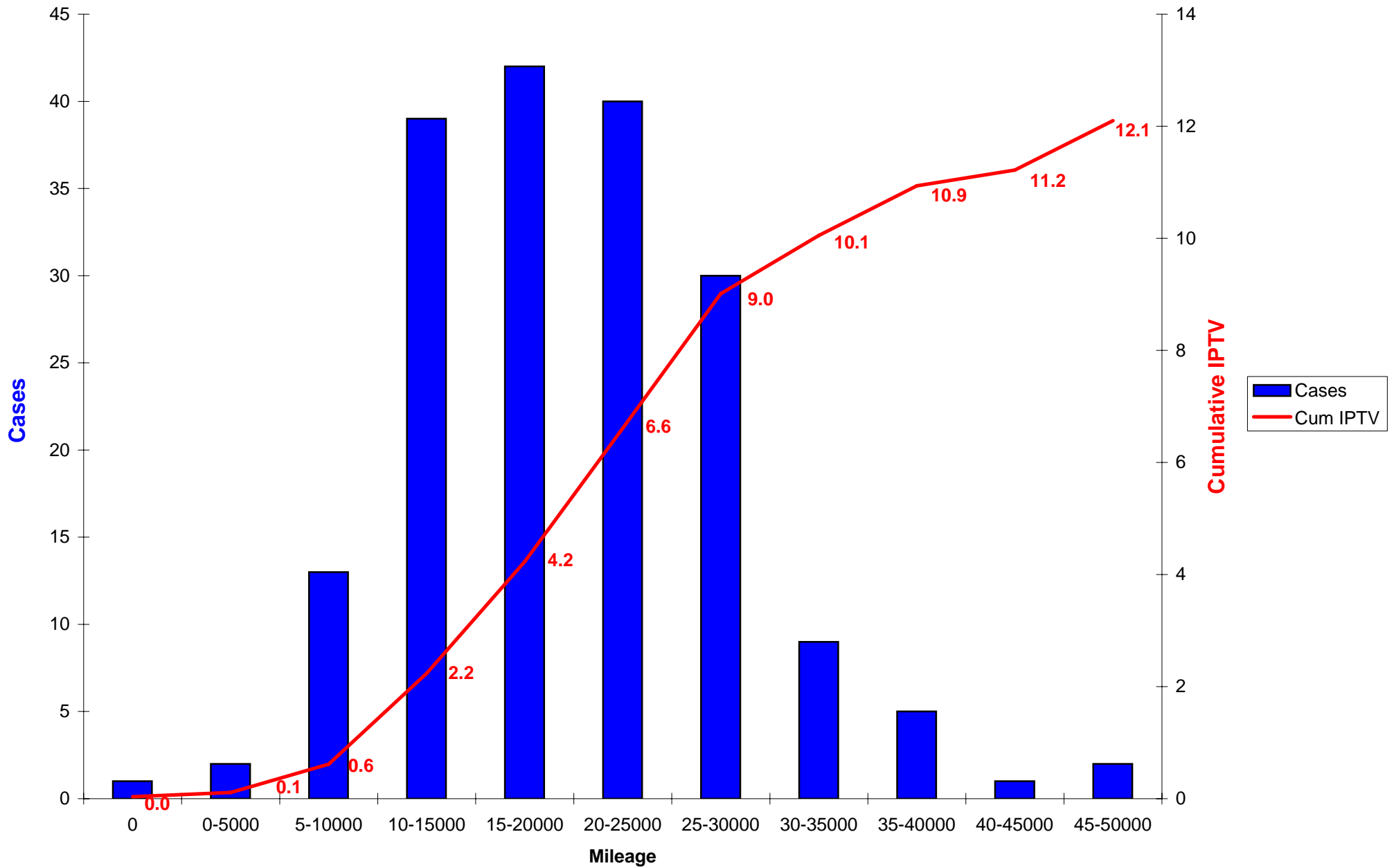


2001 L61 Timing Chain (J0820) Labor Code Build Months November 2000 through March 2001



2001 L61 Timing Chain (J0820) Labor Code Build Months November 2000 through March 2001



| ModelYear | RPO | MileageDri | cases | Actual Vehicles in Period | Vehicles | totalvehicles | Inc IPTV | Cum IPTV |
|-----------|-----|------------|-------|---------------------------|----------|---------------|----------|----------|
| 2001 | L61 | 0 | 1 | 26995 | 370 | 26995 | 0.037044 | 0.037044 |
| 2001 | L61 | 5000 | 2 | 26625 | 769 | 26995 | 0.075117 | 0.112161 |
| 2001 | L61 | 10000 | 13 | 25856 | 1795 | 26995 | 0.502785 | 0.614946 |
| 2001 | L61 | 15000 | 39 | 24061 | 3026 | 26995 | 1.62088 | 2.235826 |
| 2001 | L61 | 20000 | 42 | 21035 | 4237 | 26995 | 1.996672 | 4.232498 |
| 2001 | L61 | 25000 | 40 | 16798 | 4290 | 26995 | 2.381236 | 6.613734 |
| 2001 | L61 | 30000 | 30 | 12508 | 3847 | 26995 | 2.398465 | 9.012199 |
| 2001 | L61 | 35000 | 9 | 8661 | 3017 | 26995 | 1.039141 | 10.05134 |
| 2001 | L61 | 40000 | 5 | 5644 | 2065 | 26995 | 0.885897 | 10.93724 |
| 2001 | L61 | 45000 | 1 | 3579 | 1316 | 26995 | 0.279408 | 11.21664 |
| 2001 | L61 | 50000 | 2 | 2263 | 824 | 26995 | 0.883783 | 12.10043 |
| 2001 | L61 | 55000 | | 1439 | 494 | 26995 | | |
| 2001 | L61 | 60000 | | 945 | 314 | 26995 | | |
| 2001 | L61 | 65000 | | 631 | 204 | 26995 | | |
| 2001 | L61 | 70000 | | 427 | 137 | 26995 | | |
| 2001 | L61 | 75000 | | 290 | 83 | 26995 | | |
| 2001 | L61 | 80000 | | 207 | 54 | 26995 | | |
| 2001 | L61 | 85000 | | 153 | 52 | 26995 | | |
| 2001 | L61 | 90000 | | 101 | 22 | 26995 | | |
| 2001 | L61 | 95000 | | 79 | 15 | 26995 | | |
| 2001 | L61 | 100000 | | 64 | 14 | 26995 | | |
| 2001 | L61 | 105000 | | 50 | 11 | 26995 | | |
| 2001 | L61 | 110000 | | 39 | 7 | 26995 | | |
| 2001 | L61 | 115000 | | 32 | 8 | 26995 | | |
| 2001 | L61 | 120000 | | 24 | 1 | 26995 | | |
| 2001 | L61 | 125000 | | 23 | 5 | 26995 | | |
| 2001 | L61 | 130000 | | 18 | 2 | 26995 | | |
| 2001 | L61 | 135000 | | 16 | 3 | 26995 | | |
| 2001 | L61 | 140000 | | 13 | 2 | 26995 | | |
| 2001 | L61 | 155000 | | 11 | 1 | 26995 | | |
| 2001 | L61 | 160000 | | 10 | 1 | 26995 | | |
| 2001 | L61 | 165000 | | 9 | 1 | 26995 | | |
| 2001 | L61 | 170000 | | 8 | 1 | 26995 | | |
| 2001 | L61 | 175000 | | 7 | 1 | 26995 | | |
| 2001 | L61 | 180000 | | 6 | 1 | 26995 | | |
| 2001 | L61 | 305000 | | 5 | 1 | 26995 | | |
| 2001 | L61 | 315000 | | 4 | 1 | 26995 | | |
| 2001 | L61 | 425000 | | 3 | 1 | 26995 | | |
| 2001 | L61 | 565000 | | 2 | 1 | 26995 | | |
| 2001 | L61 | 730000 | | 1 | 1 | 26995 | | |

Summary

| Bin | Cases | Vehicles |
|----------|-------|----------|
| 0 | 1 | 26995 |
| 0-5000 | 2 | 26625 |
| 5-10000 | 13 | 25856 |
| 10-15000 | 39 | 24061 |
| 15-20000 | 42 | 21035 |
| 20-25000 | 40 | 16798 |
| 25-30000 | 30 | 12508 |
| 30-35000 | 9 | 8661 |
| 35-40000 | 5 | 5644 |
| 40-45000 | 1 | 3579 |
| 45-50000 | 2 | 2263 |