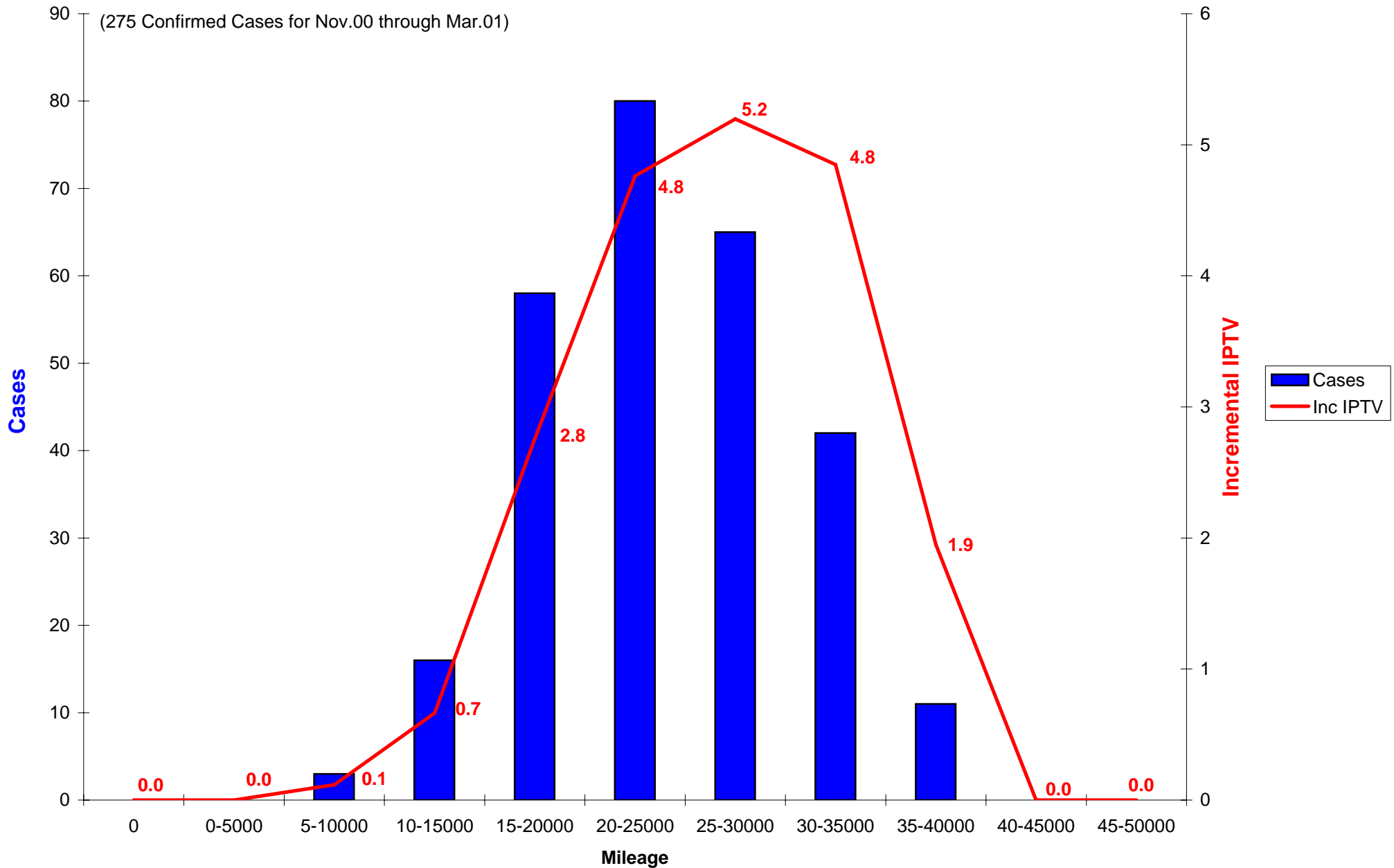
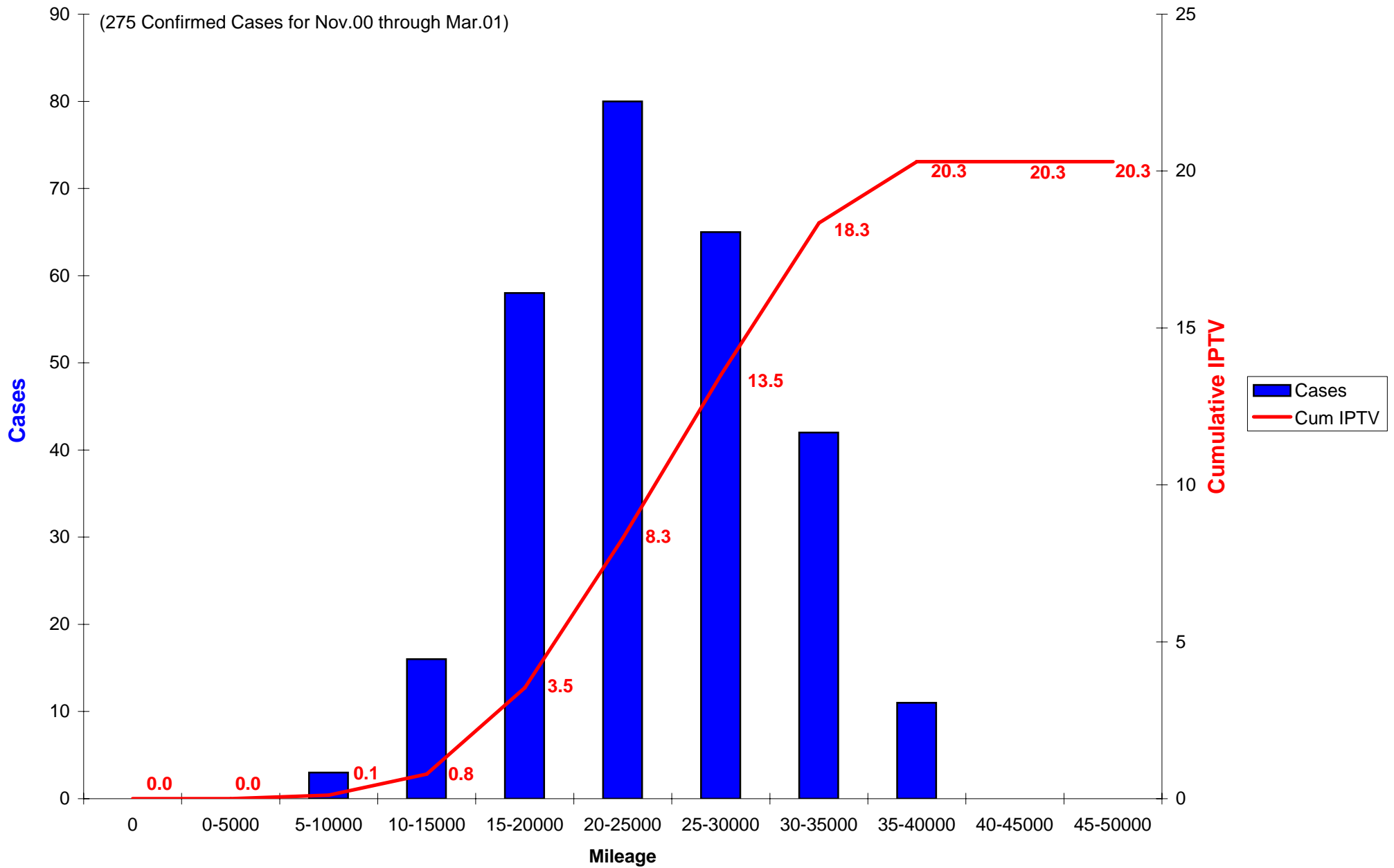


2001 L61 Timing Chain Confirmed Cases Build Months November 2000 through March 2001



2001 L61 Timing Chain Confirmed Cases Build Months November 2000 through March 2001



ModelYear	RPO	MileageDri	cases	Actual Vehicles in Period	Vehicles	totalvehicles	Inc IPTV	Cum IPTV
2001 L61		0	0	26995	370	26995	0	0
2001 L61		5000	0	26625	769	26995	0	0
2001 L61		10000	3	25856	1795	26995	0.116027	0.116027
2001 L61		15000	16	24061	3026	26995	0.664977	0.781004
2001 L61		20000	58	21035	4237	26995	2.757309	3.538313
2001 L61		25000	80	16798	4290	26995	4.762472	8.300785
2001 L61		30000	65	12508	3847	26995	5.196674	13.49746
2001 L61		35000	42	8661	3017	26995	4.849325	18.34678
2001 L61		40000	11	5644	2065	26995	1.948972	20.29576
2001 L61		45000	0	3579	1316	26995	0	20.29576
2001 L61		50000	0	2263	824	26995	0	20.29576
2001 L61		55000		1439	494	26995		
2001 L61		60000		945	314	26995		
2001 L61		65000		631	204	26995		
2001 L61		70000		427	137	26995		
2001 L61		75000		290	83	26995		
2001 L61		80000		207	54	26995		
2001 L61		85000		153	52	26995		
2001 L61		90000		101	22	26995		
2001 L61		95000		79	15	26995		
2001 L61		100000		64	14	26995		
2001 L61		105000		50	11	26995		
2001 L61		110000		39	7	26995		
2001 L61		115000		32	8	26995		
2001 L61		120000		24	1	26995		
2001 L61		125000		23	5	26995		
2001 L61		130000		18	2	26995		
2001 L61		135000		16	3	26995		
2001 L61		140000		13	2	26995		
2001 L61		155000		11	1	26995		
2001 L61		160000		10	1	26995		
2001 L61		165000		9	1	26995		
2001 L61		170000		8	1	26995		
2001 L61		175000		7	1	26995		
2001 L61		180000		6	1	26995		
2001 L61		305000		5	1	26995		
2001 L61		315000		4	1	26995		
2001 L61		425000		3	1	26995		
2001 L61		565000		2	1	26995		
2001 L61		730000		1	1	26995		

Bin	Cases	Vehicles
0	0	26995
0-5000	0	26625
5-10000	3	25856
10-15000	16	24061
15-20000	58	21035
20-25000	80	16798
25-30000	65	12508
30-35000	42	8661
35-40000	11	5644
40-45000	0	3579
45-50000	0	2263