

Cost Redacted [*]

Key

Paste QWIK
data in Blue
Section

Model_Yr	Chart_Period	Period	Adjusted_Vehicles	Act_Cases	Dollar_Am	Cases1001	CostVehicl	Cum_Case	Cum_Total	Cum_Case	Cum_Cost	Months
20012000080000	2001	200008	0	2506	0	0	0	0	0	0	0	0
20012000080030	2001	200008	0001-0030	2506	0	0	0	0	0	0	0	0
20012000080060	2001	200008	0031-0060	2506	0	0	0	0	0	0	0	0
20012000080090	2001	200008	0061-0090	2506	0	0	0	0	0	0	0	0
20012000080120	2001	200008	0091-0120	2506	0	0	0	0	0	0	0	0
20012000080150	2001	200008	0121-0150	2506	0	0	0	0	0	0	0	0
20012000080180	2001	200008	0151-0180	2506	0	0	0	0	0	0	0	0
20012000080210	2001	200008	0181-0210	2506	0	0	0	0	0	0	0	0
20012000080240	2001	200008	0211-0240	2506	0	0	0	0	0	0	0	0
20012000080270	2001	200008	0241-0270	2506	0	1	0.399042	1	0.399042	0.399042	0	0
20012000080300	2001	200008	0271-0300	2506	0	1	0.399042	2	0.798085	0.798085	0	0
20012000080330	2001	200008	0301-0330	2506	0	0	0	2	0.798085	0.798085	0	0
20012000080360	2001	200008	0331-0360	2506	0	0	0	2	0.798085	0.798085	0	0
20012000080390	2001	200008	0361-0390	2506	0	0	0	2	0.798085	0.798085	0	0
20012000080420	2001	200008	0391-0420	2506	0	0	0	2	0.798085	0.798085	0	0
20012000080450	2001	200008	0421-0450	2506	0	0	0	2	0.798085	0.798085	0	0
20012000080480	2001	200008	0451-0480	2506	0	0	0	2	0.798085	0.798085	0	0
20012000080510	2001	200008	0481-0510	2506	0	0	0	2	0.798085	0.798085	0	0
20012000080540	2001	200008	0511-0540	2506	0	0	0	2	0.798085	0.798085	0	0
20012000080570	2001	200008	0541-0570	2506	0	0	0	2	0.798085	0.798085	0	0
20012000080600	2001	200008	0571-0600	2506	0	1	0.399042	3	1.197127	1.197127	0	0
20012000080630	2001	200008	0601-0630	2506	0	2	0.798085	5	1.995211	1.995211	0	0
20012000080660	2001	200008	0631-0660	2506	0	0	0	5	1.995211	1.995211	0	0
20012000080690	2001	200008	0661-0690	2505.033	2	0	0	5	1.995211	1.995211	0	0
20012000080720	2001	200008	0691-0720	2504	0	1	0.399361	6	2.394573	2.394573	0	0
20012000080750	2001	200008	0721-0750	2503.1	2	0	0	6	2.394573	2.394573	0	0
20012000080780	2001	200008	0751-0780	2501.6	6	0	0	6	2.394573	2.394573	0	0
20012000080810	2001	200008	0781-0810	2429.567	454	0	0	6	2.394573	2.394573	0	0
20012000080840	2001	200008	0811-0840	978.6667	2042	0	0	6	2.394573	2.394573	0	0
20012000120000	2001	200012	0	1383	0	0	0	0	0	0	0	0
20012000120030	2001	200012	0001-0030	1383	0	0	0	0	0	0	0	0
20012000120060	2001	200012	0031-0060	1383	0	0	0	0	0	0	0	0
20012000120090	2001	200012	0061-0090	1383	0	0	0	0	0	0	0	0
20012000120120	2001	200012	0091-0120	1383	0	0	0	0	0	0	0	0
20012000120150	2001	200012	0121-0150	1383	0	0	0	0	0	0	0	0
20012000120180	2001	200012	0151-0180	1383	0	0	0	0	0	0	0	0
20012000120210	2001	200012	0181-0210	1383	0	0	0	0	0	0	0	0
20012000120240	2001	200012	0211-0240	1383	0	1	0.723066	1	0.723066	0.723066	0	0
20012000120270	2001	200012	0241-0270	1383	0	3	2.169197	4	2.892263	2.892263	0	0
20012000120300	2001	200012	0271-0300	1383	0	1	0.723066	5	3.615329	3.615329	0	0
20012000120330	2001	200012	0301-0330	1383	0	1	0.723066	6	4.338395	4.338395	0	0
20012000120360	2001	200012	0331-0360	1383	0	1	0.723066	7	5.061461	5.061461	0	0
20012000120390	2001	200012	0361-0390	1383	0	1	0.723066	8	5.784526	5.784526	0	0
20012000120420	2001	200012	0391-0420	1383	0	0	0	8	5.784526	5.784526	0	0
20012000120450	2001	200012	0421-0450	1383	0	0	0	8	5.784526	5.784526	0	0
20012000120480	2001	200012	0451-0480	1383	0	3	2.169197	11	7.953724	7.953724	0	0
20012000120510	2001	200012	0481-0510	1383	0	0	0	11	7.953724	7.953724	0	0
20012000120540	2001	200012	0511-0540	1383	0	6	4.338395	17	12.29212	12.29212	0	0
20012000120570	2001	200012	0541-0570	1383	0	6	4.338395	23	16.63051	16.63051	0	0
20012000120600	2001	200012	0571-0600	1383	0	2	1.446132	25	18.07664	18.07664	0	0
20012000120630	2001	200012	0601-0630	1383	0	1	0.723066	26	18.79971	18.79971	0	0
20012000120660	2001	200012	0631-0660	1383	0	2	1.446132	28	20.24584	20.24584	0	0
20012000120690	2001	200012	0661-0690	1353.533	168	1	0.738807	29	20.98465	20.98465	0	0
20012000120720	2001	200012	0691-0720	583.9333	1197	1	1.712524	30	22.69717	22.69717	0	0
20012001010000	2001	200101	0	1707	0	0	0	0	0	0	0	0
20012001010030	2001	200101	0001-0030	1707	0	0	0	0	0	0	0	0
20012001010060	2001	200101	0031-0060	1707	0	0	0	0	0	0	0	0
20012001010090	2001	200101	0061-0090	1707	0	0	0	0	0	0	0	0
20012001010120	2001	200101	0091-0120	1707	0	0	0	0	0	0	0	0
20012001010150	2001	200101	0121-0150	1707	0	0	0	0	0	0	0	0
20012001010180	2001	200101	0151-0180	1707	0	0	0	0	0	0	0	0
20012001010210	2001	200101	0181-0210	1707	0	0	0	0	0	0	0	0
20012001010240	2001	200101	0211-0240	1707	0	1	0.585823	1	0.585823	0.585823	0	0
20012001010270	2001	200101	0241-0270	1707	0	0	0	1	0.585823	0.585823	0	0
20012001010300	2001	200101	0271-0300	1707	0	1	0.585823	2	1.171646	1.171646	0	0
20012001010330	2001	200101	0301-0330	1707	0	1	0.585823	3	1.757469	1.757469	0	0
20012001010360	2001	200101	0331-0360	1707	0	1	0.585823	4	2.343292	2.343292	0	0
20012001010390	2001	200101	0361-0390	1707	0	0	0	4	2.343292	2.343292	0	0
20012001010420	2001	200101	0391-0420	1707	0	1	0.585823	5	2.929115	2.929115	0	0
20012001010450	2001	200101	0421-0450	1707	0	0	0	5	2.929115	2.929115	0	0
20012001010480	2001	200101	0451-0480	1707	0	0	0	5	2.929115	2.929115	0	0
20012001010510	2001	200101	0481-0510	1707	0	1	0.585823	6	3.514938	3.514938	0	0
20012001010540	2001	200101	0511-0540	1707	0	3	1.757469	9	5.272408	5.272408	0	0
20012001010570	2001	200101	0541-0570	1707	0	0	0	9	5.272408	5.272408	0	0
20012001010600	2001	200101	0571-0600	1707	0	3	1.757469	12	7.029877	7.029877	0	0

Cost Redacted [*]

20012001010630	2001	200101	0601-0630	1704.433	15	2	[*]	1.173411	[*]	14	[*]	8.203287	[*]
20012001010660	2001	200101	0631-0660	1587.4	391	0	[*]	0	[*]	14	[*]	8.203287	[*]
20012001010690	2001	200101	0661-0690	630.3667	1237	0	[*]	0	[*]	14	[*]	8.203287	[*]
20012001020000	2001	200102	0	1119	0	0	[*]	0	[*]	0	[*]	0	[*]
20012001020030	2001	200102	0001-0030	1119	0	0	[*]	0	[*]	0	[*]	0	[*]
20012001020060	2001	200102	0031-0060	1119	0	0	[*]	0	[*]	0	[*]	0	[*]
20012001020090	2001	200102	0061-0090	1119	0	1	[*]	0.893655	[*]	1	[*]	0.893655	[*]
20012001020120	2001	200102	0091-0120	1119	0	0	[*]	0	[*]	1	[*]	0.893655	[*]
20012001020150	2001	200102	0121-0150	1119	0	0	[*]	0	[*]	1	[*]	0.893655	[*]
20012001020180	2001	200102	0151-0180	1119	0	0	[*]	0	[*]	1	[*]	0.893655	[*]
20012001020210	2001	200102	0181-0210	1119	0	0	[*]	0	[*]	1	[*]	0.893655	[*]
20012001020240	2001	200102	0211-0240	1119	0	1	[*]	0.893655	[*]	2	[*]	1.78731	[*]
20012001020270	2001	200102	0241-0270	1119	0	1	[*]	0.893655	[*]	3	[*]	2.680965	[*]
20012001020300	2001	200102	0271-0300	1119	0	0	[*]	0	[*]	3	[*]	2.680965	[*]
20012001020330	2001	200102	0301-0330	1119	0	0	[*]	0	[*]	3	[*]	2.680965	[*]
20012001020360	2001	200102	0331-0360	1119	0	0	[*]	0	[*]	3	[*]	2.600965	[*]
20012001020390	2001	200102	0361-0390	1119	0	0	[*]	0	[*]	3	[*]	2.680965	[*]
20012001020420	2001	200102	0391-0420	1119	0	1	[*]	0.893655	[*]	4	[*]	3.57462	[*]
20012001020450	2001	200102	0421-0450	1119	0	0	[*]	0	[*]	4	[*]	3.57462	[*]
20012001020480	2001	200102	0451-0480	1118	2	2	[*]	1.788909	[*]	6	[*]	5.363529	[*]
20012001020510	2001	200102	0481-0510	1117	0	0	[*]	0	[*]	6	[*]	5.363529	[*]
20012001020540	2001	200102	0511-0540	1117	0	0	[*]	0	[*]	6	[*]	5.363529	[*]
20012001020570	2001	200102	0541-0570	1117	0	1	[*]	0.895255	[*]	7	[*]	6.258784	[*]
20012001020600	2001	200102	0571-0600	1117	1	0	[*]	0	[*]	7	[*]	6.258784	[*]
20012001020630	2001	200102	0601-0630	1095.9	132	0	[*]	0	[*]	7	[*]	6.258784	[*]
20012001020660	2001	200102	0631-0660	513.5	933	0	[*]	0	[*]	7	[*]	6.258784	[*]
20012001030000	2001	200103	0	1886	0	0	[*]	0	[*]	0	[*]	0	[*]
20012001030030	2001	200103	0001-0030	1886	0	0	[*]	0	[*]	0	[*]	0	[*]
20012001030060	2001	200103	0031-0060	1886	0	0	[*]	0	[*]	0	[*]	0	[*]
20012001030090	2001	200103	0061-0090	1886	0	0	[*]	0	[*]	0	[*]	0	[*]
20012001030120	2001	200103	0091-0120	1886	0	0	[*]	0	[*]	0	[*]	0	[*]
20012001030150	2001	200103	0121-0150	1886	0	0	[*]	0	[*]	0	[*]	0	[*]
20012001030180	2001	200103	0151-0180	1886	0	0	[*]	0	[*]	0	[*]	0	[*]
20012001030210	2001	200103	0181-0210	1886	0	0	[*]	0	[*]	0	[*]	0	[*]
20012001030240	2001	200103	0211-0240	1886	0	0	[*]	0	[*]	0	[*]	0	[*]
20012001030270	2001	200103	0241-0270	1886	0	0	[*]	0	[*]	0	[*]	0	[*]
20012001030300	2001	200103	0271-0300	1886	0	0	[*]	0	[*]	0	[*]	0	[*]
20012001030330	2001	200103	0301-0330	1886	0	0	[*]	0	[*]	0	[*]	0	[*]
20012001030360	2001	200103	0331-0360	1886	0	0	[*]	0	[*]	0	[*]	0	[*]
20012001030390	2001	200103	0361-0390	1886	0	0	[*]	0	[*]	0	[*]	0	[*]
20012001030420	2001	200103	0391-0420	1886	0	0	[*]	0	[*]	0	[*]	0	[*]
20012001030450	2001	200103	0421-0450	1886	0	0	[*]	0	[*]	0	[*]	0	[*]
20012001030480	2001	200103	0451-0480	1886	0	0	[*]	0	[*]	0	[*]	0	[*]
20012001030510	2001	200103	0481-0510	1886	0	0	[*]	0	[*]	0	[*]	0	[*]
20012001030540	2001	200103	0511-0540	1886	0	0	[*]	0	[*]	0	[*]	0	[*]
20012001030570	2001	200103	0541-0570	1854.767	75	0	[*]	0	[*]	0	[*]	0	[*]
20012001030600	2001	200103	0571-0600	1681.733	472	0	[*]	0	[*]	0	[*]	0	[*]
20012001030630	2001	200103	0601-0630	792.2667	1198	0	[*]	0	[*]	0	[*]	0	[*]
20012001040000	2001	200104	0	1907	0	0	[*]	0	[*]	0	[*]	0	[*]
20012001040030	2001	200104	0001-0030	1907	0	0	[*]	0	[*]	0	[*]	0	[*]
20012001040060	2001	200104	0031-0060	1907	0	0	[*]	0	[*]	0	[*]	0	[*]
20012001040090	2001	200104	0061-0090	1907	0	0	[*]	0	[*]	0	[*]	0	[*]
20012001040120	2001	200104	0091-0120	1907	0	0	[*]	0	[*]	0	[*]	0	[*]
20012001040150	2001	200104	0121-0150	1907	0	0	[*]	0	[*]	0	[*]	0	[*]
20012001040180	2001	200104	0151-0180	1907	0	0	[*]	0	[*]	0	[*]	0	[*]
20012001040210	2001	200104	0181-0210	1907	0	0	[*]	0	[*]	0	[*]	0	[*]
20012001040240	2001	200104	0211-0240	1907	0	0	[*]	0	[*]	0	[*]	0	[*]
20012001040270	2001	200104	0241-0270	1907	0	0	[*]	0	[*]	0	[*]	0	[*]
20012001040300	2001	200104	0271-0300	1907	0	0	[*]	0	[*]	0	[*]	0	[*]
20012001040330	2001	200104	0301-0330	1907	0	0	[*]	0	[*]	0	[*]	0	[*]
20012001040360	2001	200104	0331-0360	1907	0	0	[*]	0	[*]	0	[*]	0	[*]
20012001040390	2001	200104	0361-0390	1907	0	0	[*]	0	[*]	0	[*]	0	[*]
20012001040420	2001	200104	0391-0420	1907	0	2	[*]	1.048768	[*]	2	[*]	1.048768	[*]
20012001040450	2001	200104	0421-0450	1907	0	0	[*]	0	[*]	2	[*]	1.048768	[*]
20012001040480	2001	200104	0451-0480	1907	0	0	[*]	0	[*]	2	[*]	1.048768	[*]
20012001040510	2001	200104	0481-0510	1906.667	1	0	[*]	0	[*]	2	[*]	1.048768	[*]
20012001040540	2001	200104	0511-0540	1905.567	1	0	[*]	0	[*]	2	[*]	1.048768	[*]
20012001040570	2001	200104	0541-0570	1726.233	619	0	[*]	0	[*]	2	[*]	1.048768	[*]
20012001040600	2001	200104	0571-0600	503.4	1209	0	[*]	0	[*]	2	[*]	1.048768	[*]
20012001050000	2001	200105	0	2617	0	0	[*]	0	[*]	0	[*]	0	[*]
20012001050030	2001	200105	0001-0030	2617	0	0	[*]	0	[*]	0	[*]	0	[*]
20012001050060	2001	200105	0031-0060	2617	0	0	[*]	0	[*]	0	[*]	0	[*]
20012001050090	2001	200105	0061-0090	2617	0	0	[*]	0	[*]	0	[*]	0	[*]
20012001050120	2001	200105	0091-0120	2617	0	0	[*]	0	[*]	0	[*]	0	[*]
20012001050150	2001	200105	0121-0150	2617	0	0	[*]	0	[*]	0	[*]	0	[*]
20012001050180	2001	200105	0151-0180	2617	0	0	[*]	0	[*]	0	[*]	0	[*]
20012001050210	2001	200105	0181-0210	2617	0	0	[*]	0	[*]	0	[*]	0	[*]
20012001050240	2001	200105	0211-0240	2617	0	0	[*]	0	[*]	0	[*]	0	[*]
20012001050270	2001	200105	0241-0270	2617	0	0	[*]	0	[*]	0	[*]	0	[*]
20012001050300	2001	200105	0271-0300	2617	0	0	[*]	0	[*]	0	[*]	0	[*]

Cost Redacted [*]

20012001050330	2001	200105	0301-0330	2617	0	0	[*]	0	[*]	0	[*]	0	[*]
20012001050360	2001	200105	0331-0360	2617	0	0	[*]	0	[*]	0	[*]	0	[*]
20012001050390	2001	200105	0361-0390	2617	0	0	[*]	0	[*]	0	[*]	0	[*]
20012001050420	2001	200105	0391-0420	2617	0	0	[*]	0	[*]	0	[*]	0	[*]
20012001050450	2001	200105	0421-0450	2617	0	0	[*]	0	[*]	0	[*]	0	[*]
20012001050480	2001	200105	0451-0480	2617	0	0	[*]	0	[*]	0	[*]	0	[*]
20012001050510	2001	200105	0481-0510	2617	8	0	[*]	0	[*]	0	[*]	0	[*]
20012001050540	2001	200105	0511-0540	2516	483	0	[*]	0	[*]	0	[*]	0	[*]
20012001050570	2001	200105	0541-0570	1178.8	1962	0	[*]	0	[*]	0	[*]	0	[*]
20012001060000	2001	200106	0	1248	0	0	[*]	0	[*]	0	[*]	0	[*]
20012001060030	2001	200106	0001-0030	1248	0	0	[*]	0	[*]	0	[*]	0	[*]
20012001060060	2001	200106	0031-0060	1248	0	0	[*]	0	[*]	0	[*]	0	[*]
20012001060090	2001	200106	0061-0090	1248	0	0	[*]	0	[*]	0	[*]	0	[*]
20012001060120	2001	200106	0091-0120	1248	0	0	[*]	0	[*]	0	[*]	0	[*]
20012001060150	2001	200106	0121-0150	1248	0	0	[*]	0	[*]	0	[*]	0	[*]
20012001060180	2001	200106	0151-0180	1248	0	0	[*]	0	[*]	0	[*]	0	[*]
20012001060210	2001	200106	0181-0210	1248	0	0	[*]	0	[*]	0	[*]	0	[*]
20012001060240	2001	200106	0211-0240	1248	0	0	[*]	0	[*]	0	[*]	0	[*]
20012001060270	2001	200106	0241-0270	1248	0	0	[*]	0	[*]	0	[*]	0	[*]
20012001060300	2001	200106	0271-0300	1248	0	0	[*]	0	[*]	0	[*]	0	[*]
20012001060330	2001	200106	0301-0330	1248	0	0	[*]	0	[*]	0	[*]	0	[*]
20012001060360	2001	200106	0331-0360	1248	0	0	[*]	0	[*]	0	[*]	0	[*]
20012001060390	2001	200106	0361-0390	1248	0	1	[*]	0.801282	[*]	1	[*]	0.801282	[*]
20012001060420	2001	200106	0391-0420	1248	0	0	[*]	0	[*]	1	[*]	0.801282	[*]
20012001060450	2001	200106	0421-0450	1248	0	0	[*]	0	[*]	1	[*]	0.801282	[*]
20012001060480	2001	200106	0451-0480	1246.133	2	0	[*]	0	[*]	1	[*]	0.801282	[*]
20012001060510	2001	200106	0481-0510	1231.9	124	0	[*]	0	[*]	1	[*]	0.801282	[*]
20012001060540	2001	200106	0511-0540	639.7333	1089	0	[*]	0	[*]	1	[*]	0.801282	[*]
20010000990000	2001	999999	0	14373	0	0	[*]	0	[*]	0	[*]	0	[*]
20010000990030	2001	999999	0001-0030	14373	0	0	[*]	0	[*]	0	[*]	0	[*]
20010000990060	2001	999999	0031-0060	14373	0	0	[*]	0	[*]	0	[*]	0	[*]
20010000990090	2001	999999	0061-0090	14373	0	1	[*]	0.069575	[*]	1	[*]	0.069575	[*]
20010000990120	2001	999999	0091-0120	14373	0	0	[*]	0	[*]	1	[*]	0.069575	[*]
20010000990150	2001	999999	0121-0150	14373	0	0	[*]	0	[*]	1	[*]	0.069575	[*]
20010000990180	2001	999999	0151-0180	14373	0	0	[*]	0	[*]	1	[*]	0.069575	[*]
20010000990210	2001	999999	0181-0210	14373	0	0	[*]	0	[*]	1	[*]	0.069575	[*]
20010000990240	2001	999999	0211-0240	14373	0	3	[*]	0.208725	[*]	4	[*]	0.2783	[*]
20010000990270	2001	999999	0241-0270	14373	0	5	[*]	0.347874	[*]	9	[*]	0.626174	[*]
20010000990300	2001	999999	0271-0300	14373	0	3	[*]	0.208725	[*]	12	[*]	0.834899	[*]
20010000990330	2001	999999	0301-0330	14373	0	2	[*]	0.13915	[*]	14	[*]	0.974049	[*]
20010000990360	2001	999999	0331-0360	14373	0	2	[*]	0.13915	[*]	16	[*]	1.113198	[*]
20010000990390	2001	999999	0361-0390	14373	0	2	[*]	0.13915	[*]	18	[*]	1.252348	[*]
20010000990420	2001	999999	0391-0420	14373	0	4	[*]	0.2783	[*]	22	[*]	1.530648	[*]
20010000990450	2001	999999	0421-0450	14373	0	0	[*]	0	[*]	22	[*]	1.530648	[*]
20010000990480	2001	999999	0451-0480	14370.13	4	5	[*]	0.347944	[*]	27	[*]	1.878592	[*]
20010000990510	2001	999999	0481-0510	14354.57	133	1	[*]	0.069664	[*]	28	[*]	1.948256	[*]
20010000990540	2001	999999	0511-0540	13660.3	1573	9	[*]	0.658844	[*]	37	[*]	2.607099	[*]
20010000990570	2001	999999	0541-0570	11472.8	2656	7	[*]	0.610139	[*]	44	[*]	3.217238	[*]
20010000990600	2001	999999	0571-0600	8898.133	1682	6	[*]	0.674299	[*]	50	[*]	3.891537	[*]
20010000990630	2001	999999	0601-0630	7481.6	1345	5	[*]	0.668306	[*]	55	[*]	4.559843	[*]
20010000990660	2001	999999	0631-0660	5989.9	1324	2	[*]	0.333895	[*]	57	[*]	4.893739	[*]
20010000990690	2001	999999	0661-0690	4488.933	1407	1	[*]	0.22277	[*]	58	[*]	5.116509	[*]
20022001070000	2002	200107	0	3675	0	0	[*]	0	[*]	0	[*]	0	[*]
20022001070030	2002	200107	0001-0030	3675	0	0	[*]	0	[*]	0	[*]	0	[*]
20022001070060	2002	200107	0031-0060	3675	0	0	[*]	0	[*]	0	[*]	0	[*]
20022001070090	2002	200107	0061-0090	3675	0	0	[*]	0	[*]	0	[*]	0	[*]
20022001070120	2002	200107	0091-0120	3675	0	0	[*]	0	[*]	0	[*]	0	[*]
20022001070150	2002	200107	0121-0150	3674.8	1	0	[*]	0	[*]	0	[*]	0	[*]
20022001070180	2002	200107	0151-0180	3674	0	0	[*]	0	[*]	0	[*]	0	[*]
20022001070210	2002	200107	0181-0210	3674	0	0	[*]	0	[*]	0	[*]	0	[*]
20022001070240	2002	200107	0211-0240	3674	0	0	[*]	0	[*]	0	[*]	0	[*]
20022001070270	2002	200107	0241-0270	3674	0	0	[*]	0	[*]	0	[*]	0	[*]
20022001070300	2002	200107	0271-0300	3674	1	1	[*]	0.272183	[*]	1	[*]	0.272183	[*]
20022001070330	2002	200107	0301-0330	3673	0	0	[*]	0	[*]	1	[*]	0.272183	[*]
20022001070360	2002	200107	0331-0360	3671.867	2	0	[*]	0	[*]	1	[*]	0.272183	[*]
20022001070390	2002	200107	0361-0390	3669.233	4	0	[*]	0	[*]	1	[*]	0.272183	[*]
20022001070420	2002	200107	0391-0420	3665.967	2	0	[*]	0	[*]	1	[*]	0.272183	[*]
20022001070450	2002	200107	0421-0450	3661.733	9	0	[*]	0	[*]	1	[*]	0.272183	[*]
20022001070480	2002	200107	0451-0480	3647.933	1208	0	[*]	0	[*]	1	[*]	0.272183	[*]
20022001070510	2002	200107	0481-0510	978.5	2448	0	[*]	0	[*]	1	[*]	0.272183	[*]
20022001080000	2002	200108	0	9613	0	0	[*]	0	[*]	0	[*]	0	[*]
20022001080030	2002	200108	0001-0030	9613	0	0	[*]	0	[*]	0	[*]	0	[*]
20022001080060	2002	200108	0031-0060	9613	0	0	[*]	0	[*]	0	[*]	0	[*]
20022001080090	2002	200108	0061-0090	9613	0	0	[*]	0	[*]	0	[*]	0	[*]
20022001080120	2002	200108	0091-0120	9613	0	0	[*]	0	[*]	0	[*]	0	[*]
20022001080150	2002	200108	0121-0150	9613	0	0	[*]	0	[*]	0	[*]	0	[*]
20022001080180	2002	200108	0151-0180	9613	0	1	[*]	0.104026	[*]	1	[*]	0.104026	[*]
20022001080210	2002	200108	0181-0210	9612.567	2	3	[*]	0.312091	[*]	4	[*]	0.416117	[*]
20022001080240	2002	200108	0211-0240	9609.267	2	0	[*]	0	[*]	4	[*]	0.416117	[*]
20022001080270	2002	200108	0241-0270	9608.567	1	2	[*]	0.208148	[*]	6	[*]	0.624265	[*]

Cost Redacted [*]

20022001080300	2002	200108	0271-0300	9608	0	1	[*]	0.10408	[*]	7	[*]	0.728345	[*]
20022001080330	2002	200108	0301-0330	9606.8	3	9	[*]	0.936836	[*]	16	[*]	1.665181	[*]
20022001080360	2002	200108	0331-0360	9604.533	2	11	[*]	1.145293	[*]	27	[*]	2.810474	[*]
20022001080390	2002	200108	0361-0390	9600.967	4	14	[*]	1.458187	[*]	41	[*]	4.268666	[*]
20022001080420	2002	200108	0391-0420	9593.067	18	11	[*]	1.146661	[*]	52	[*]	5.415322	[*]
20022001080450	2002	200108	0421-0450	9389.567	1032	4	[*]	0.426005	[*]	56	[*]	5.841326	[*]
20022001080480	2002	200108	0451-0480	4631.933	8549	1	[*]	0.215893	[*]	57	[*]	6.057219	[*]
20022001090000	2002	200109	0	4137	0	0	[*]	0	[*]	0	[*]	0	[*]
20022001090030	2002	200109	0001-0030	4137	0	0	[*]	0	[*]	0	[*]	0	[*]
20022001090060	2002	200109	0031-0060	4136.567	1	0	[*]	0	[*]	0	[*]	0	[*]
20022001090090	2002	200109	0061-0090	4136	0	0	[*]	0	[*]	0	[*]	0	[*]
20022001090120	2002	200109	0091-0120	4136	0	0	[*]	0	[*]	0	[*]	0	[*]
20022001090150	2002	200109	0121-0150	4135.333	2	0	[*]	0	[*]	0	[*]	0	[*]
20022001090180	2002	200109	0151-0180	4133.267	1	0	[*]	0	[*]	0	[*]	0	[*]
20022001090210	2002	200109	0181-0210	4132.467	3	0	[*]	0	[*]	0	[*]	0	[*]
20022001090240	2002	200109	0211-0240	4126.567	7	0	[*]	0	[*]	0	[*]	0	[*]
20022001090270	2002	200109	0241-0270	4122.1	4	1	[*]	0.242595	[*]	1	[*]	0.242595	[*]
20022001090300	2002	200109	0271-0300	4116.6	3	1	[*]	0.242919	[*]	2	[*]	0.485514	[*]
20022001090330	2002	200109	0301-0330	4114.833	4	1	[*]	0.243023	[*]	3	[*]	0.728537	[*]
20022001090360	2002	200109	0331-0360	4109.1	8	1	[*]	0.243362	[*]	4	[*]	0.971899	[*]
20022001090390	2002	200109	0361-0390	4095.567	17	0	[*]	0	[*]	4	[*]	0.971899	[*]
20022001090420	2002	200109	0391-0420	3929.7	404	0	[*]	0	[*]	4	[*]	0.971899	[*]
20022001090450	2002	200109	0421-0450	1729.1	3682	0	[*]	0	[*]	4	[*]	0.971899	[*]
20022001100000	2002	200110	0	3476	0	0	[*]	0	[*]	0	[*]	0	[*]
20022001100030	2002	200110	0001-0030	3476	0	0	[*]	0	[*]	0	[*]	0	[*]
20022001100060	2002	200110	0031-0060	3476	0	0	[*]	0	[*]	0	[*]	0	[*]
20022001100090	2002	200110	0061-0090	3476	0	0	[*]	0	[*]	0	[*]	0	[*]
20022001100120	2002	200110	0091-0120	3475.4	1	0	[*]	0	[*]	0	[*]	0	[*]
20022001100150	2002	200110	0121-0150	3475	0	0	[*]	0	[*]	0	[*]	0	[*]
20022001100180	2002	200110	0151-0180	3474.4	2	0	[*]	0	[*]	0	[*]	0	[*]
20022001100210	2002	200110	0181-0210	3471.3	14	0	[*]	0	[*]	0	[*]	0	[*]
20022001100240	2002	200110	0211-0240	3459	0	0	[*]	0	[*]	0	[*]	0	[*]
20022001100270	2002	200110	0241-0270	3458.1	1	1	[*]	0.289176	[*]	1	[*]	0.289176	[*]
20022001100300	2002	200110	0271-0300	3458	0	1	[*]	0.289184	[*]	2	[*]	0.578361	[*]
20022001100330	2002	200110	0301-0330	3457.267	3	2	[*]	0.578492	[*]	4	[*]	1.156852	[*]
20022001100360	2002	200110	0331-0360	3450.933	14	1	[*]	0.289777	[*]	5	[*]	1.446629	[*]
20022001100390	2002	200110	0361-0390	3271.067	464	0	[*]	0	[*]	5	[*]	1.446629	[*]
20022001100420	2002	200110	0391-0420	1482.167	2951	0	[*]	0	[*]	5	[*]	1.446629	[*]
20022001110000	2002	200111	0	1461	0	0	[*]	0	[*]	0	[*]	0	[*]
20022001110030	2002	200111	0001-0030	1460.1	1	0	[*]	0	[*]	0	[*]	0	[*]
20022001110060	2002	200111	0031-0060	1460	0	0	[*]	0	[*]	0	[*]	0	[*]
20022001110090	2002	200111	0061-0090	1459.067	1	0	[*]	0	[*]	0	[*]	0	[*]
20022001110120	2002	200111	0091-0120	1459	0	0	[*]	0	[*]	0	[*]	0	[*]
20022001110150	2002	200111	0121-0150	1459	0	0	[*]	0	[*]	0	[*]	0	[*]
20022001110180	2002	200111	0151-0180	1459	1	0	[*]	0	[*]	0	[*]	0	[*]
20022001110210	2002	200111	0181-0210	1457.433	1	0	[*]	0	[*]	0	[*]	0	[*]
20022001110240	2002	200111	0211-0240	1455.833	3	0	[*]	0	[*]	0	[*]	0	[*]
20022001110270	2002	200111	0241-0270	1454	0	0	[*]	0	[*]	0	[*]	0	[*]
20022001110300	2002	200111	0271-0300	1453.733	1	0	[*]	0	[*]	0	[*]	0	[*]
20022001110330	2002	200111	0301-0330	1447.067	18	0	[*]	0	[*]	0	[*]	0	[*]
20022001110360	2002	200111	0331-0360	1360.5	404	0	[*]	0	[*]	0	[*]	0	[*]
20022001120000	2002	200112	0	5360	0	0	[*]	0	[*]	0	[*]	0	[*]
20022001120030	2002	200112	0001-0030	5360	0	0	[*]	0	[*]	0	[*]	0	[*]
20022001120060	2002	200112	0031-0060	5360	0	0	[*]	0	[*]	0	[*]	0	[*]
20022001120090	2002	200112	0061-0090	5360	0	0	[*]	0	[*]	0	[*]	0	[*]
20022001120120	2002	200112	0091-0120	5360	0	0	[*]	0	[*]	0	[*]	0	[*]
20022001120150	2002	200112	0121-0150	5360	0	0	[*]	0	[*]	0	[*]	0	[*]
20022001120180	2002	200112	0151-0180	5360	0	0	[*]	0	[*]	0	[*]	0	[*]
20022001120210	2002	200112	0181-0210	5358.9	4	0	[*]	0	[*]	0	[*]	0	[*]
20022001120240	2002	200112	0211-0240	5355.167	1	0	[*]	0	[*]	0	[*]	0	[*]
20022001120270	2002	200112	0241-0270	5354.533	1	0	[*]	0	[*]	0	[*]	0	[*]
20022001120300	2002	200112	0271-0300	5349.333	11	0	[*]	0	[*]	0	[*]	0	[*]
20022001120330	2002	200112	0301-0330	4978.833	1250	0	[*]	0	[*]	0	[*]	0	[*]
20022001120360	2002	200112	0331-0360	2391.167	4093	0	[*]	0	[*]	0	[*]	0	[*]
20022002010000	2002	200201	0	5659	0	0	[*]	0	[*]	0	[*]	0	[*]
20022002010030	2002	200201	0001-0030	5659	0	0	[*]	0	[*]	0	[*]	0	[*]
20022002010060	2002	200201	0031-0060	5658.9	1	0	[*]	0	[*]	0	[*]	0	[*]
20022002010090	2002	200201	0061-0090	5657.067	1	0	[*]	0	[*]	0	[*]	0	[*]
20022002010120	2002	200201	0091-0120	5655.867	2	0	[*]	0	[*]	0	[*]	0	[*]
20022002010150	2002	200201	0121-0150	5653.533	2	0	[*]	0	[*]	0	[*]	0	[*]
20022002010180	2002	200201	0151-0180	5652.733	1	0	[*]	0	[*]	0	[*]	0	[*]
20022002010210	2002	200201	0181-0210	5650.267	3	0	[*]	0	[*]	0	[*]	0	[*]
20022002010240	2002	200201	0211-0240	5647.167	4	0	[*]	0	[*]	0	[*]	0	[*]
20022002010270	2002	200201	0241-0270	5596.467	76	0	[*]	0	[*]	0	[*]	0	[*]
20022002010300	2002	200201	0271-0300	5004.667	2110	0	[*]	0	[*]	0	[*]	0	[*]
20022002020000	2002	200202	0	5674	0	0	[*]	0	[*]	0	[*]	0	[*]
20022002020030	2002	200202	0001-0030	5674	0	0	[*]	0	[*]	0	[*]	0	[*]
20022002020060	2002	200202	0031-0060	5673.8	1	0	[*]	0	[*]	0	[*]	0	[*]
20022002020090	2002	200202	0061-0090	5673	0	0	[*]	0	[*]	0	[*]	0	[*]
20022002020120	2002	200202	0091-0120	5672.1	2	0	[*]	0	[*]	0	[*]	0	[*]

Cost Redacted [*]

20022002020150	2002	200202	0121-0150	5669.167	4	0	[*]	0	[*]	0	[*]	0	[*]
20022002020180	2002	200202	0151-0180	5664.7	6	0	[*]	0	[*]	0	[*]	0	[*]
20022002020210	2002	200202	0181-0210	5658.9	6	0	[*]	0	[*]	0	[*]	0	[*]
20022002020240	2002	200202	0211-0240	5648.367	20	0	[*]	0	[*]	0	[*]	0	[*]
20022002020270	2002	200202	0241-0270	5258.5	1027	0	[*]	0	[*]	0	[*]	0	[*]
20022002020300	2002	200202	0271-0300	1811.933	4602	0	[*]	0	[*]	0	[*]	0	[*]
20022002030000	2002	200203	0	4186	0	0	[*]	0	[*]	0	[*]	0	[*]
20022002030030	2002	200203	0001-0030	4185.967	1	0	[*]	0	[*]	0	[*]	0	[*]
20022002030060	2002	200203	0031-0060	4183.467	3	0	[*]	0	[*]	0	[*]	0	[*]
20022002030090	2002	200203	0061-0090	4182	0	0	[*]	0	[*]	0	[*]	0	[*]
20022002030120	2002	200203	0091-0120	4180.2	3	0	[*]	0	[*]	0	[*]	0	[*]
20022002030150	2002	200203	0121-0150	4177.867	3	0	[*]	0	[*]	0	[*]	0	[*]
20022002030180	2002	200203	0151-0180	4171.533	13	0	[*]	0	[*]	0	[*]	0	[*]
20022002030210	2002	200203	0181-0210	4142.8	48	0	[*]	0	[*]	0	[*]	0	[*]
20022002030240	2002	200203	0211-0240	3804.867	690	0	[*]	0	[*]	0	[*]	0	[*]
20022002030270	2002	200203	0241-0270	1331.433	3418	0	[*]	0	[*]	0	[*]	0	[*]
20022002040000	2002	200204	0	8278	0	0	[*]	0	[*]	0	[*]	0	[*]
20022002040030	2002	200204	0001-0030	8278	0	0	[*]	0	[*]	0	[*]	0	[*]
20022002040060	2002	200204	0031-0060	8277.3	1	0	[*]	0	[*]	0	[*]	0	[*]
20022002040090	2002	200204	0061-0090	8275.967	4	0	[*]	0	[*]	0	[*]	0	[*]
20022002040120	2002	200204	0091-0120	8271.6	4	0	[*]	0	[*]	0	[*]	0	[*]
20022002040150	2002	200204	0121-0150	8267.367	3	0	[*]	0	[*]	0	[*]	0	[*]
20022002040180	2002	200204	0151-0180	8237.9	86	0	[*]	0	[*]	0	[*]	0	[*]
20022002040210	2002	200204	0181-0210	7452.867	2564	0	[*]	0	[*]	0	[*]	0	[*]
20022002040240	2002	200204	0211-0240	2720.933	5614	0	[*]	0	[*]	0	[*]	0	[*]
20022002050000	2002	200205	0	10777	0	0	[*]	0	[*]	0	[*]	0	[*]
20022002050030	2002	200205	0001-0030	10777	0	1	[*]	0.09279	[*]	1	[*]	0.09279	[*]
20022002050060	2002	200205	0031-0060	10775.2	4	0	[*]	0	[*]	1	[*]	0.09279	[*]
20022002050090	2002	200205	0061-0090	10771.9	3	0	[*]	0	[*]	1	[*]	0.09279	[*]
20022002050120	2002	200205	0091-0120	10769.37	2	0	[*]	0	[*]	1	[*]	0.09279	[*]
20022002050150	2002	200205	0121-0150	10752.47	38	0	[*]	0	[*]	1	[*]	0.09279	[*]
20022002050180	2002	200205	0151-0180	9751.633	2944	0	[*]	0	[*]	1	[*]	0.09279	[*]
20022002050210	2002	200205	0181-0210	4020.867	7772	0	[*]	0	[*]	1	[*]	0.09279	[*]
20022002060000	2002	200206	0	2659	0	0	[*]	0	[*]	0	[*]	0	[*]
20022002060030	2002	200206	0001-0030	2659	0	0	[*]	0	[*]	0	[*]	0	[*]
20022002060060	2002	200206	0031-0060	2659	0	0	[*]	0	[*]	0	[*]	0	[*]
20022002060090	2002	200206	0061-0090	2659	0	0	[*]	0	[*]	0	[*]	0	[*]
20022002060120	2002	200206	0091-0120	2658.333	2	0	[*]	0	[*]	0	[*]	0	[*]
20022002060150	2002	200206	0121-0150	2575.167	161	0	[*]	0	[*]	0	[*]	0	[*]
20022002060180	2002	200206	0151-0180	767.1	2495	0	[*]	0	[*]	0	[*]	0	[*]
20020000990000	2002	999999	0	64955	0	0	[*]	0	[*]	0	[*]	0	[*]
20020000990030	2002	999999	0001-0030	64954.07	2	1	[*]	0.015395	[*]	1	[*]	0.015395	[*]
20020000990060	2002	999999	0031-0060	64948.23	11	0	[*]	0	[*]	1	[*]	0.015395	[*]
20020000990090	2002	999999	0061-0090	64938	9	0	[*]	0	[*]	1	[*]	0.015395	[*]
20020000990120	2002	999999	0091-0120	64925.87	16	0	[*]	0	[*]	1	[*]	0.015395	[*]
20020000990150	2002	999999	0121-0150	64812.7	214	0	[*]	0	[*]	1	[*]	0.015395	[*]
20020000990180	2002	999999	0151-0180	61959.27	5549	1	[*]	0.01614	[*]	2	[*]	0.031535	[*]
20020000990210	2002	999999	0181-0210	54632.37	10417	3	[*]	0.054913	[*]	5	[*]	0.086448	[*]
20020000990240	2002	999999	0211-0240	45501.17	6341	0	[*]	0	[*]	5	[*]	0.086448	[*]
20020000990270	2002	999999	0241-0270	39857.7	4528	4	[*]	0.100357	[*]	9	[*]	0.186805	[*]
20020000990300	2002	999999	0271-0300	34476.27	6728	4	[*]	0.116022	[*]	13	[*]	0.302826	[*]
20020000990330	2002	999999	0301-0330	27277.8	1278	12	[*]	0.439918	[*]	25	[*]	0.742745	[*]
20020000990360	2002	999999	0331-0360	24588.1	4523	13	[*]	0.528711	[*]	38	[*]	1.271456	[*]
20020000990390	2002	999999	0361-0390	20636.83	489	14	[*]	0.678399	[*]	52	[*]	1.949854	[*]
20020000990420	2002	999999	0391-0420	18670.9	3375	11	[*]	0.589152	[*]	63	[*]	2.539006	[*]

12
12
12
12
12
12
12
12
11
10
9
8
6
6
4
4

Cost Redacted [*]

The image displays a complex financial spreadsheet with multiple tables and data blocks. A large vertical table on the left side contains numerous rows of data, with some cells highlighted in blue. The main area of the spreadsheet is divided into several smaller tables and sections, including a large grid of data in the upper right, a smaller table in the middle right, and a table with blue highlights in the lower left. The text 'Cost Redacted [*]' is visible at the top right of the page.

Cost Redacted [*]

!

...

.....

Cost Redacted [*]

.....
.....
.....
.....

!

...

!

Cost Redacted [**]

2002 Model Year - Engine Warranty

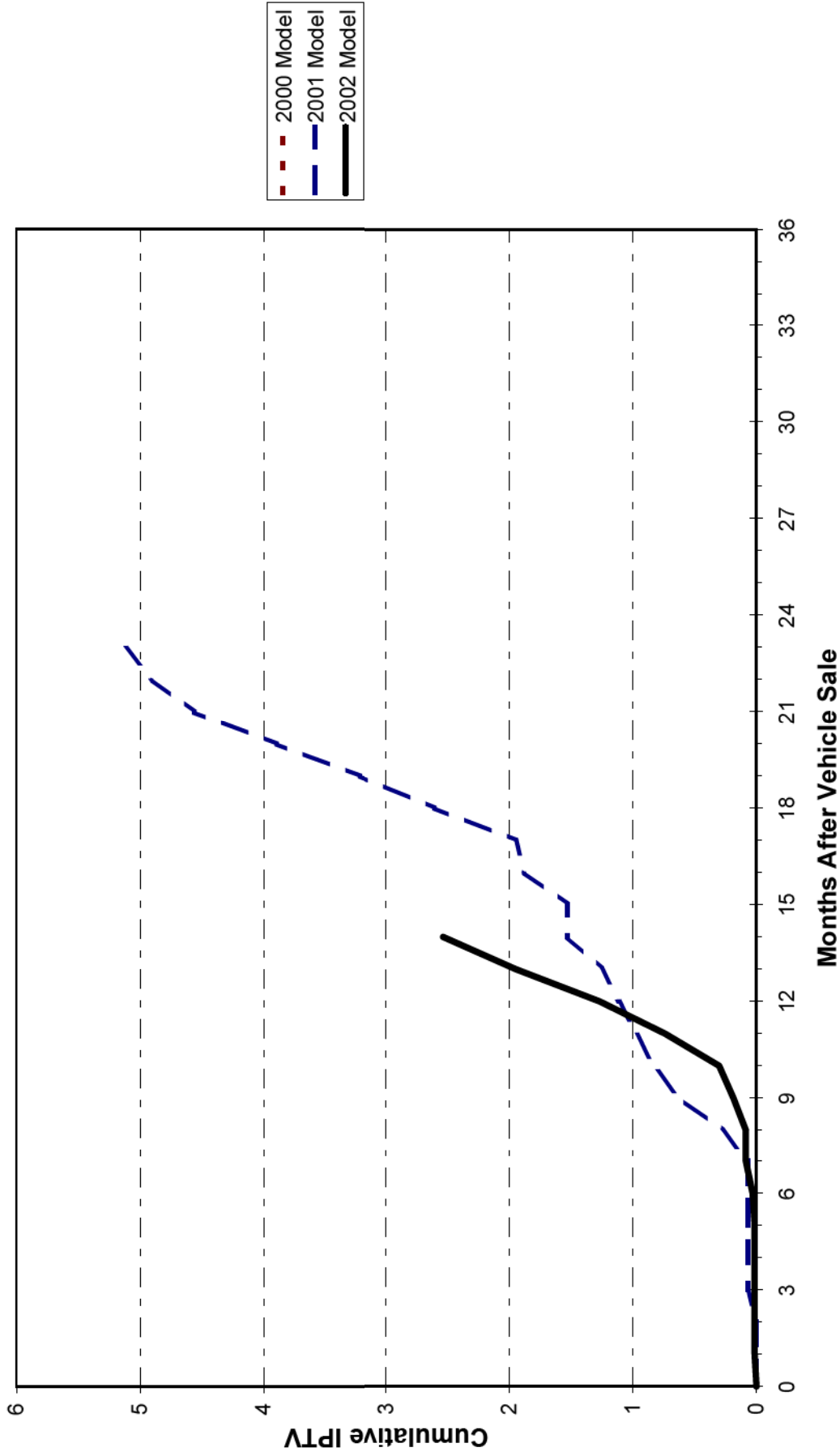
GMPT L61 (2.2L) Engine Warranty

14 Months After Vehicle Sale

J0820 - CHAIN, TIMING - REPLACE

QWIK PTTR through: 11/30/2002

FLEET ONLY



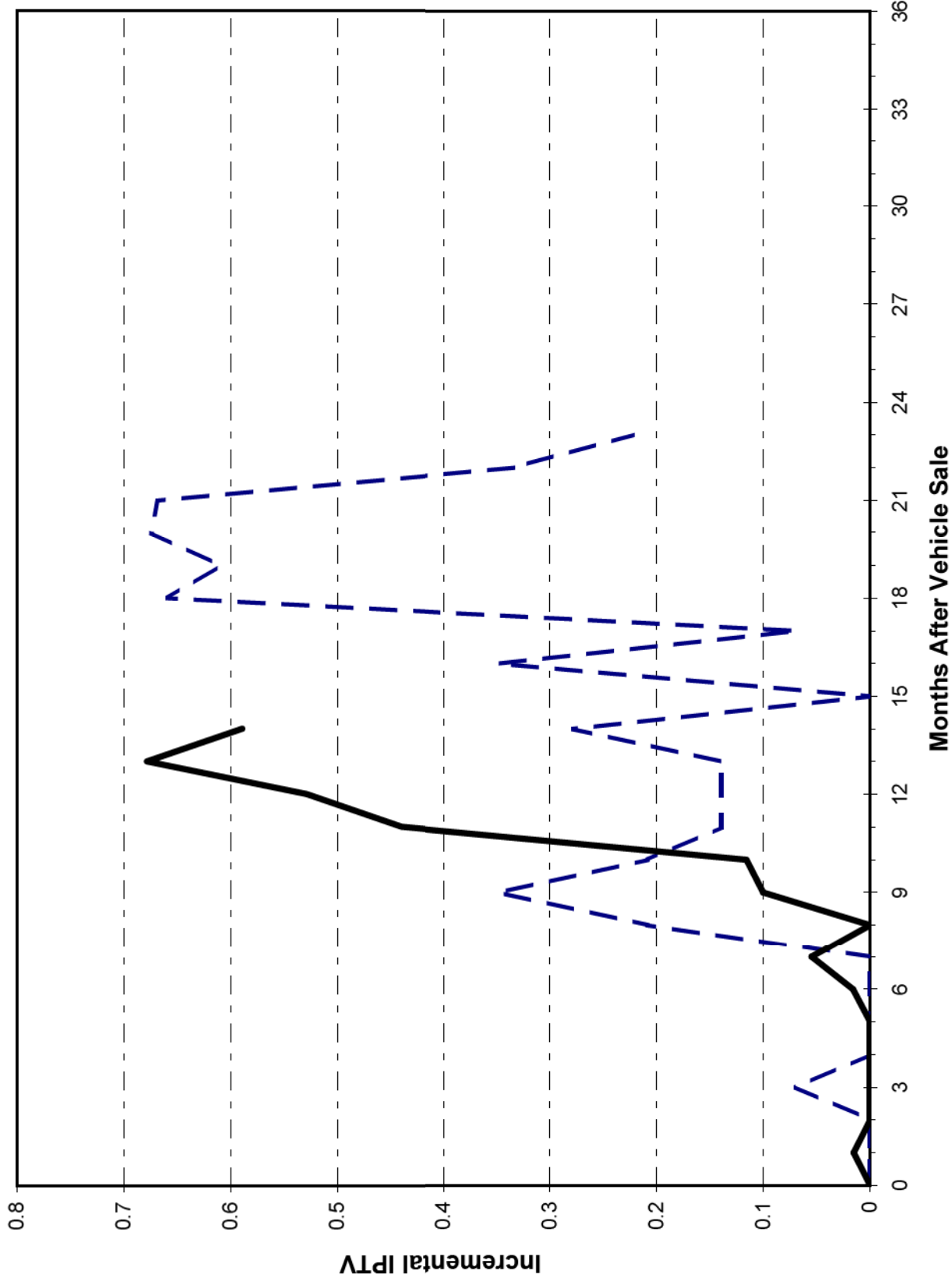
Cost Redacted [**]

2002 Model Year - Engine Warranty
14 Months After Vehicle Sale

GMPT L61 (2.2L) Engine Warranty
J0820 - CHAIN, TIMING - REPLACE

QWIK PTTR through: 11/30/2002

FLEET ONLY



Cost Redacted [*]

2002 Model Year - Engine Warranty

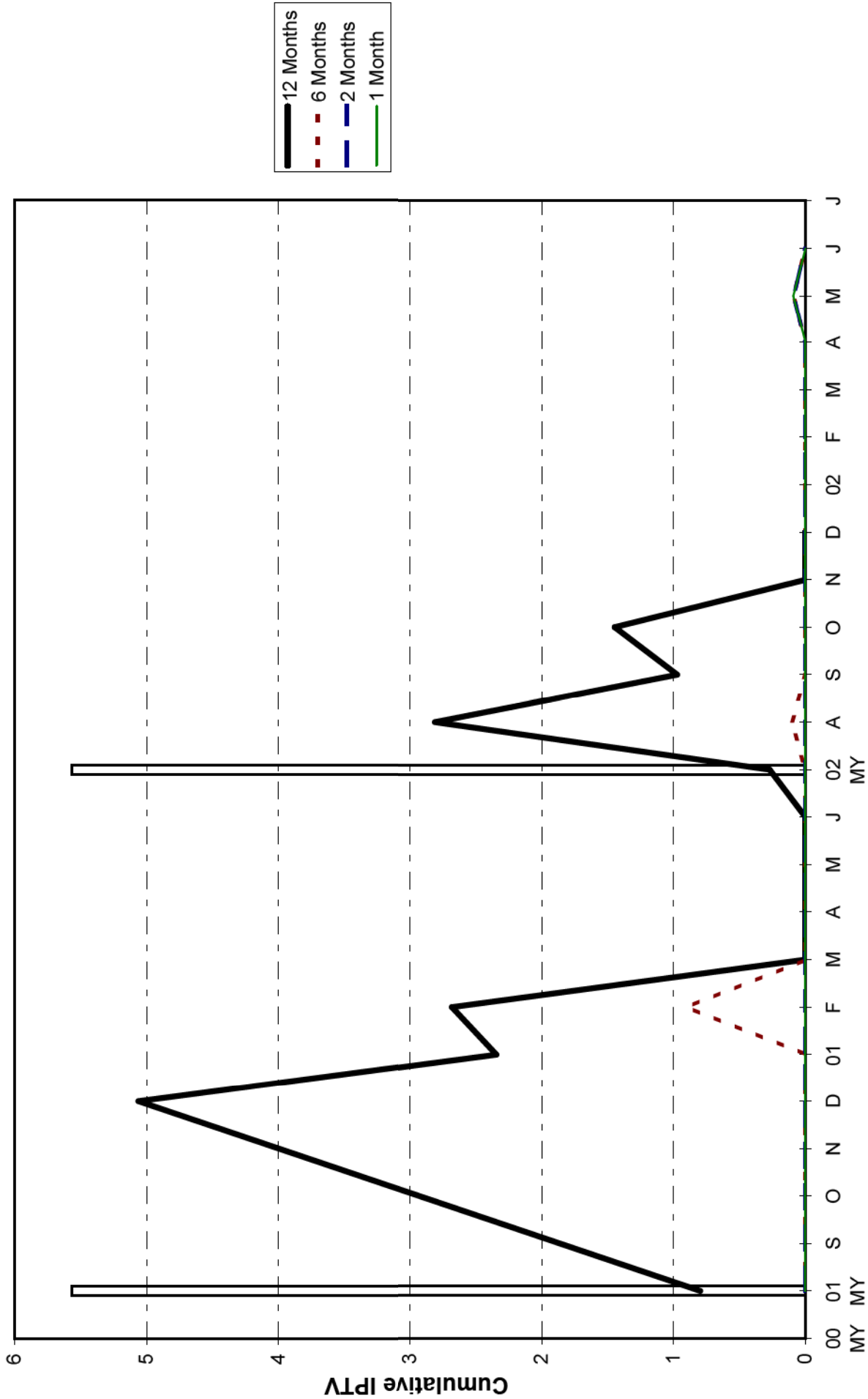
GMPT L61 (2.2L) Engine Warranty

14 Months After Vehicle Sale

J0820 - CHAIN, TIMING - REPLACE

QWIK PTTR through: 11/30/2002

FLEET ONLY



Cost Redacted [*]

2002 Model Year - Engine Warranty

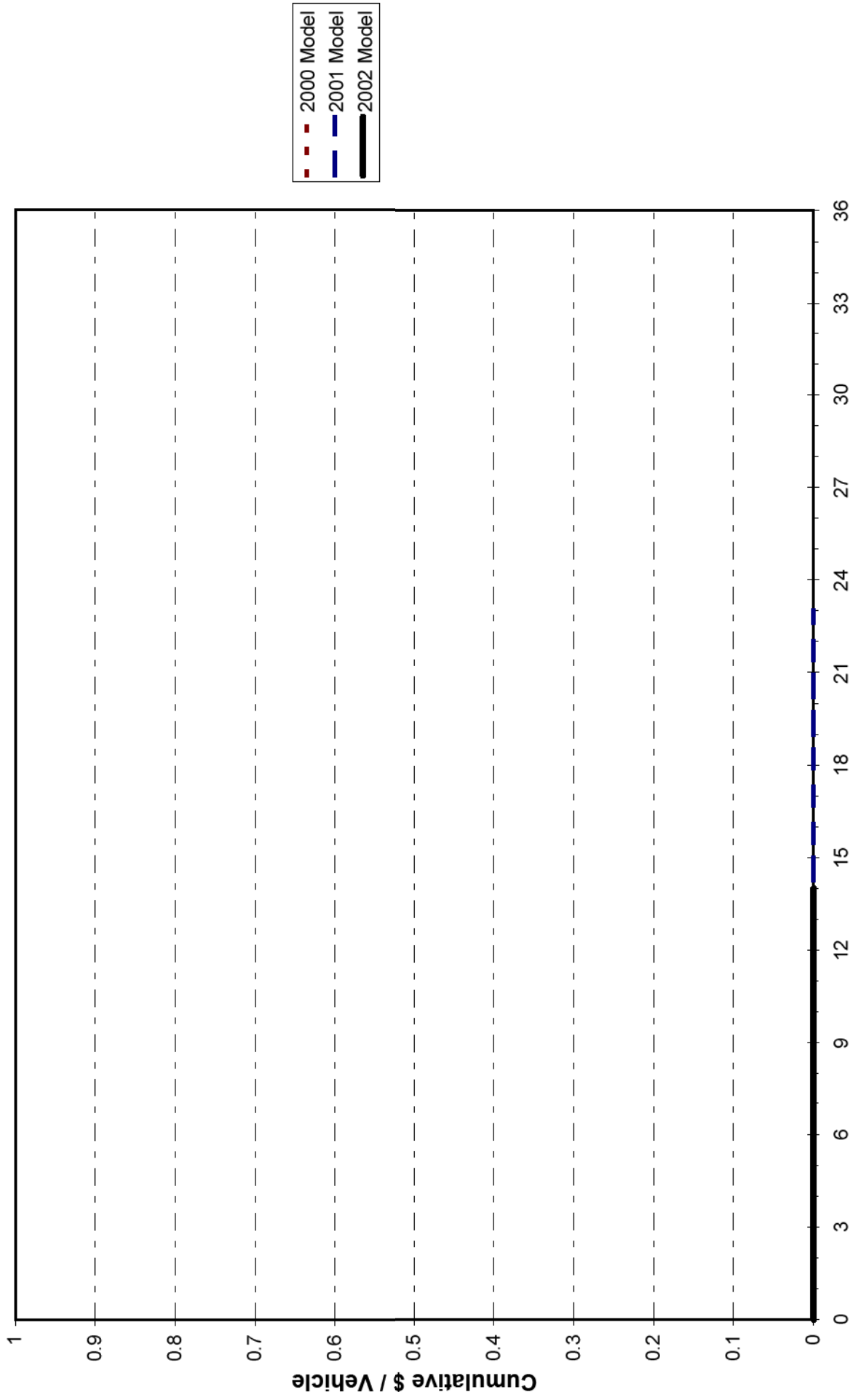
GMPT L61 (2.2L) Engine Warranty

14 Months After Vehicle Sale

J0820 - CHAIN, TIMING - REPLACE

QWIK PTTR through: 11/30/2002

FLEET ONLY



Cost Redacted [**]

2002 Model Year - Engine Warranty

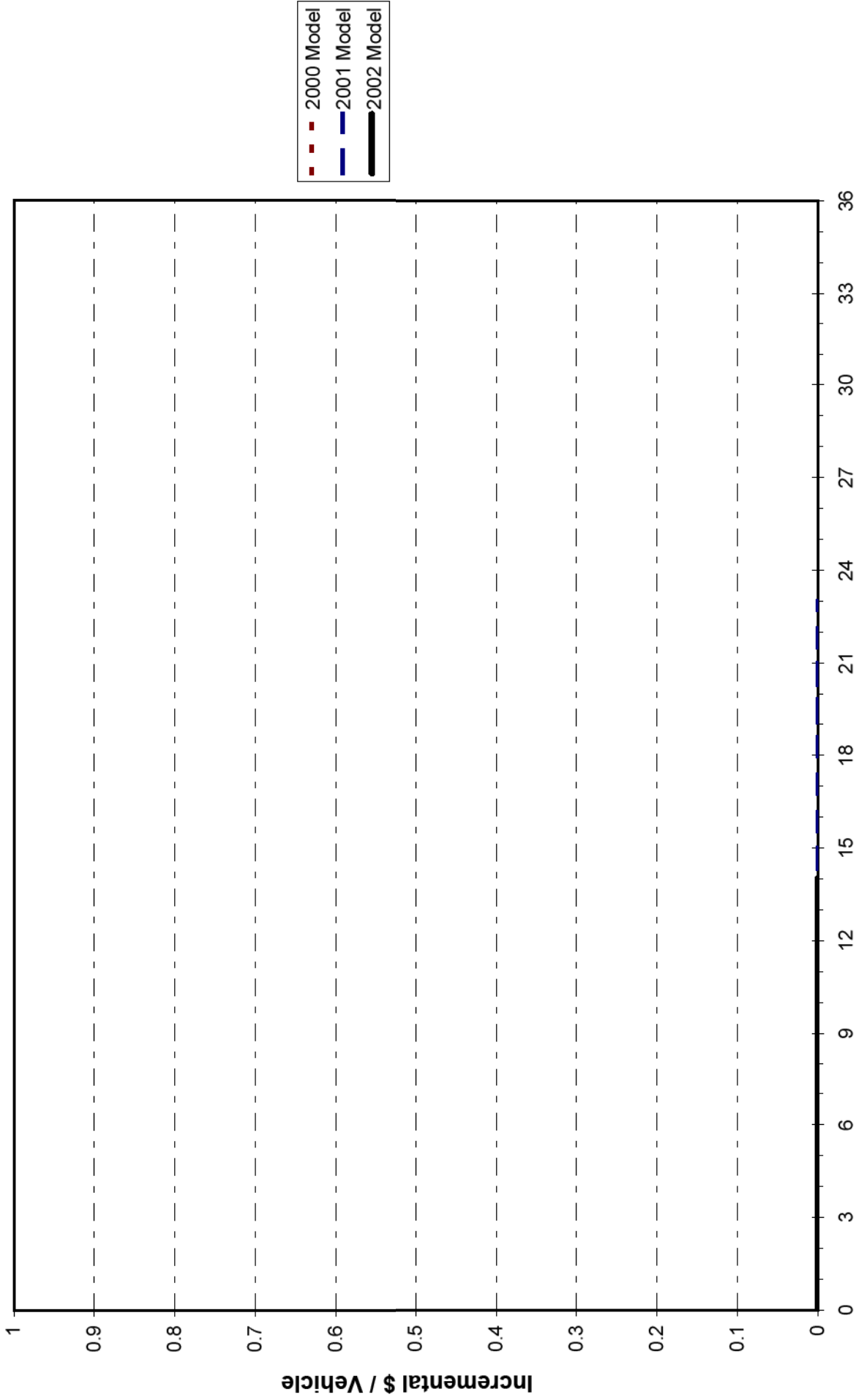
GMPT L61 (2.2L) Engine Warranty

14 Months After Vehicle Sale

J0820 - CHAIN, TIMING - REPLACE

QWIK PTTR through: 11/30/2002

FLEET ONLY



2002 Model Year - Engine Warranty

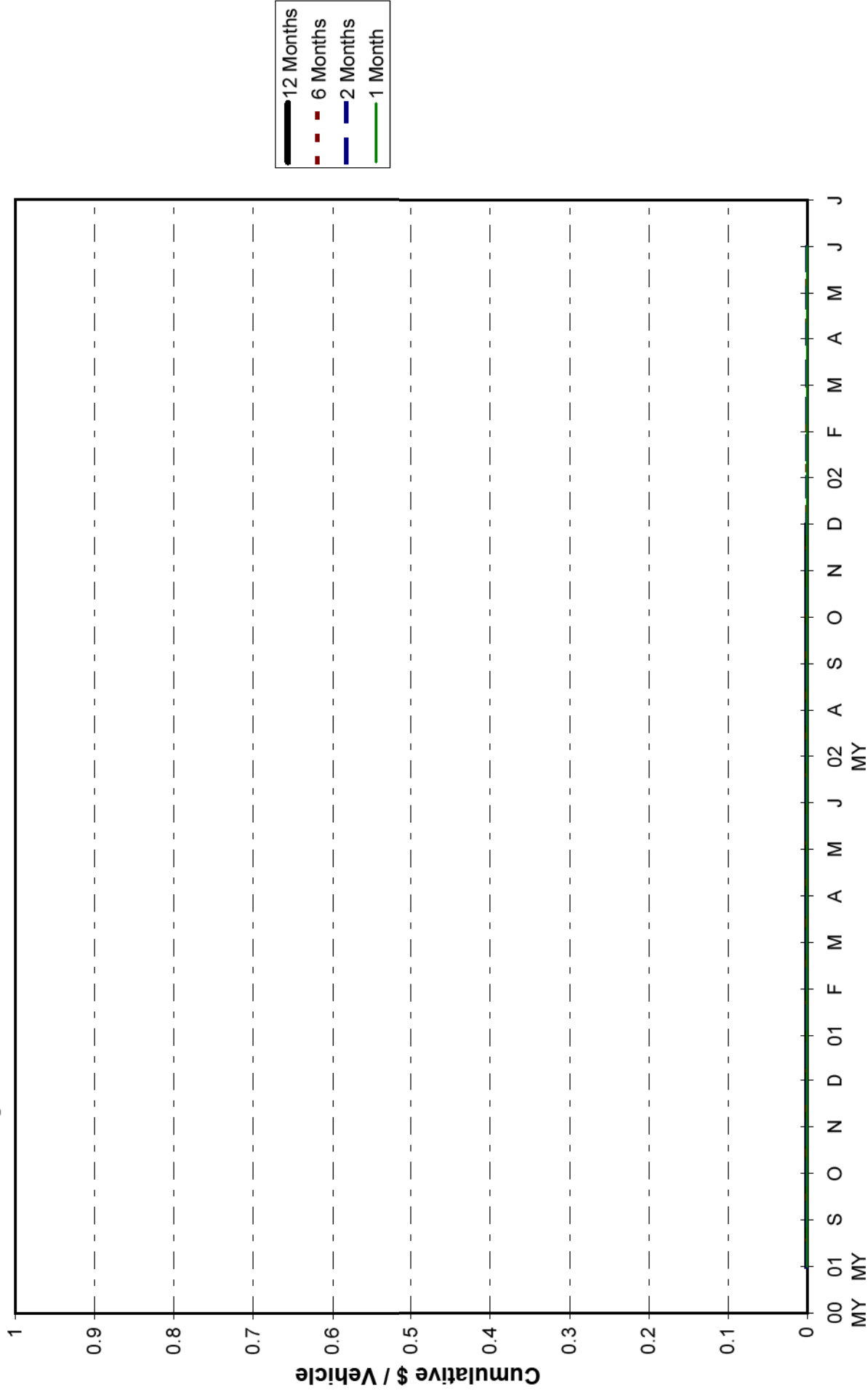
GMPT L61 (2.2L) Engine Warranty

14 Months After Vehicle Sale

J0820 - CHAIN, TIMING - REPLACE

QWIK PTTR through: 11/30/2002

FLEET ONLY



2002 Model Year - Engine Warranty
 14 Months After Vehicle Sale
 QWIK PTTR through: 11/30/2002

GMPT L61 (2.2L) Engine Warranty
 J0820 - CHAIN, TIMING - REPLACE
 FLEET ONLY

Mos.	Vehicles Sold			Incremental IPTV			Cumulative IPTV			
	2000 Model	2001 Model	2002 Model	2000 Model	2001 Model	2002 Model	2000 Model	2001 Model	2002 Model	Projected
0		14,373.00	64,955.00		0.00	0.00		0.00	0.00	
1		14,373.00	64,954.07		0.00	0.02		0.00	0.02	
2		14,373.00	64,948.23		0.00	0.00		0.00	0.02	
3		14,373.00	64,938.00		0.07	0.00		0.07	0.02	
4		14,373.00	64,925.87		0.00	0.00		0.07	0.02	
5		14,373.00	64,812.70		0.00	0.00		0.07	0.02	
6		14,373.00	61,959.27		0.00	0.02		0.07	0.03	
7		14,373.00	54,632.37		0.00	0.05		0.07	0.09	
8		14,373.00	45,501.17		0.21	0.00		0.28	0.09	
9		14,373.00	39,857.70		0.35	0.10		0.63	0.19	
10		14,373.00	34,476.27		0.21	0.12		0.83	0.30	
11		14,373.00	27,277.80		0.14	0.44		0.97	0.74	
12		14,373.00	24,588.10		0.14	0.53		1.11	1.27	
13		14,373.00	20,636.83		0.14	0.68		1.25	1.95	
14		14,373.00	18,670.90		0.28	0.59		1.53	2.54	
15		14,373.00			0.00			1.53		
16		14,370.13			0.35			1.88		
17		14,354.57			0.07			1.95		
18		13,660.30			0.66			2.61		
19		11,472.80			0.61			3.22		
20		8,898.13			0.67			3.89		
21		7,481.60			0.67			4.56		
22		5,989.90			0.33			4.89		
23		4,488.93			0.22			5.12		
24										
25										
26										
27										
28										
29										
30										
31										
32										
33										
34										
35										
36										

2002 Model Year - Engine Warranty		GMPT L61 (2.2L) Engine Warranty					
14 Months After Vehicle Sale		J0820 - CHAIN, TIMING - REPLACE					
QWIK PTTR through: 11/30/2002		FLEET ONLY					
Build	Vehicles Through 1 Month	Cumulative IPTV					
Month	2000 Model	2001 Model	2002 Model	1 Month	2 Months	6 Months	12 Months
00 MY				0.00	0.00	0.00	0.80
01 MY		2,506.00					
S							
O							
N							
D				0.00	0.00	0.00	5.06
01		1,383.00		0.00	0.00	0.00	2.34
F		1,707.00		0.00	0.00	0.89	2.68
M		1,119.00		0.00	0.00	0.00	0.00
A		1,886.00		0.00	0.00	0.00	0.00
M		1,907.00		0.00	0.00	0.00	0.00
J		2,617.00		0.00	0.00	0.00	0.00
02 MY		1,248.00		0.00	0.00	0.00	0.00
A			3,675.00	0.00	0.00	0.00	0.27
S			9,613.00	0.00	0.00	0.10	2.81
O			4,137.00	0.00	0.00	0.00	0.97
N			3,476.00	0.00	0.00	0.00	1.45
D			1,460.10	0.00	0.00	0.00	0.00
02			5,360.00	0.00	0.00	0.00	0.00
F			5,659.00	0.00	0.00	0.00	
M			5,674.00	0.00	0.00	0.00	
A			4,185.97	0.00	0.00	0.00	
M			8,278.00	0.00	0.00	0.00	
J			10,777.00	0.09	0.09	0.09	
J			2,659.00	0.00	0.00	0.00	

2002 Model Year - Engine Warranty
 14 Months After Vehicle Sale
 QWIK PTTR through: 11/30/2002

GMPT L61 (2.2L) Engine Warranty
 J0820 - CHAIN, TIMING - REPLACE
 FLEET ONLY

Mos.	Vehicles Sold			Incremental Cost Per Vehicle			Cumulative Cost Per Vehicle			
	2000 Model	2001 Model	2002 Model	2000 Model	2001 Model	2002 Model	2000 Model	2001 Model	2002 Model	Projected
0		14,373.00	64,955.00		[*]	[*]		[*]	[*]	
1		14,373.00	64,954.07		#VALUE!	#VALUE!		[*]	[*]	
2		14,373.00	64,948.23		#VALUE!	#VALUE!		[*]	[*]	
3		14,373.00	64,938.00		#VALUE!	#VALUE!		[*]	[*]	
4		14,373.00	64,925.87		#VALUE!	#VALUE!		[*]	[*]	
5		14,373.00	64,812.70		#VALUE!	#VALUE!		[*]	[*]	
6		14,373.00	61,959.27		#VALUE!	#VALUE!		[*]	[*]	
7		14,373.00	54,632.37		#VALUE!	#VALUE!		[*]	[*]	
8		14,373.00	45,501.17		#VALUE!	#VALUE!		[*]	[*]	
9		14,373.00	39,857.70		#VALUE!	#VALUE!		[*]	[*]	
10		14,373.00	34,476.27		#VALUE!	#VALUE!		[*]	[*]	
11		14,373.00	27,277.80		#VALUE!	#VALUE!		[*]	[*]	
12		14,373.00	24,588.10		#VALUE!	#VALUE!		[*]	[*]	
13		14,373.00	20,636.83		#VALUE!	#VALUE!		[*]	[*]	
14		14,373.00	18,670.90		#VALUE!	#VALUE!		[*]	[*]	
15		14,373.00			#VALUE!			[*]		
16		14,370.13			#VALUE!			[*]		
17		14,354.57			#VALUE!			[*]		
18		13,660.30			#VALUE!			[*]		
19		11,472.80			#VALUE!			[*]		
20		8,898.13			#VALUE!			[*]		
21		7,481.60			#VALUE!			[*]		
22		5,989.90			#VALUE!			[*]		
23		4,488.93			#VALUE!			[*]		
24										
25										
26										
27										
28										
29										
30										
31										
32										
33										
34										
35										
36										

2002 Model Year - Engine Warranty		GMPT L61 (2.2L) Engine Warranty	
14 Months After Vehicle Sale		J0820 - CHAIN, TIMING - REPLACE	
QWIK PTTR through: 11/30/2002		FLEET ONLY	
Build Month	Vehicles Through 1 Month		Cumulative \$/Veh
	2000 Model	2001 Model	
00 MY			
01 MY		2,506.00	2,506.00
S			
O			
N			
D		1,383.00	1,383.00
01		1,707.00	1,707.00
F		1,119.00	1,119.00
M		1,886.00	1,886.00
A		1,907.00	1,907.00
M		2,617.00	2,617.00
J		1,248.00	1,248.00
02 MY			
A		3,675.00	3,675.00
S		9,613.00	9,613.00
O		4,137.00	4,137.00
N		3,476.00	3,476.00
D		1,460.10	1,460.10
02		5,360.00	5,360.00
F		5,659.00	5,659.00
M		5,674.00	5,674.00
A		4,185.97	4,185.97
M		8,278.00	8,278.00
J		10,777.00	10,777.00
J		2,659.00	2,659.00