

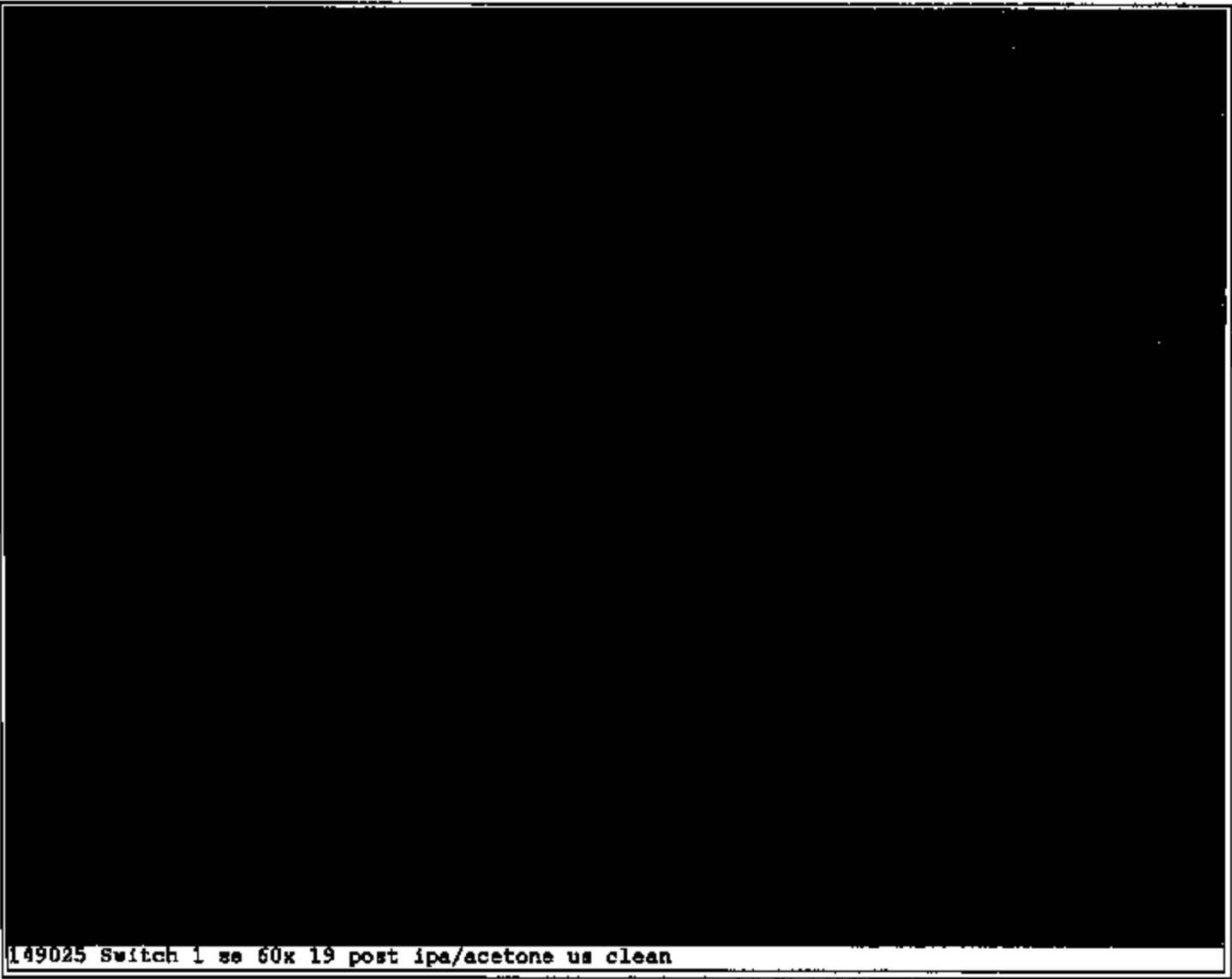
**EA05-005**  
**STEPTOE & JOHNSON**  
**FOR TEXAS INSTRUMENTS**  
**2/23/2006**  
**ATTACHMENT PART 2 OF 3**

TI NHT05 11793

149025 Switch 1 se 90x 17

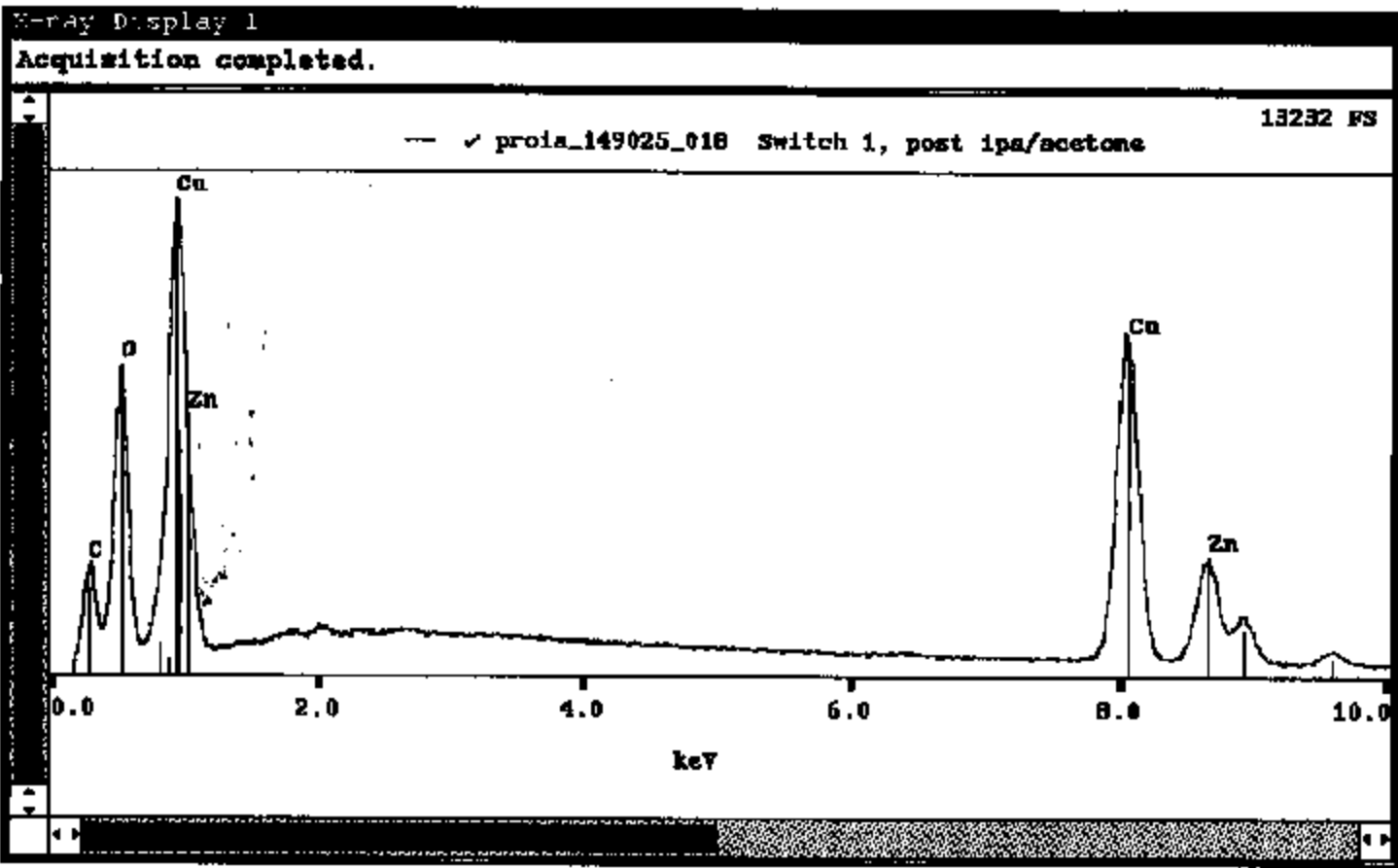
149025 Switch 1 se 220x 18

TINHOTOS 11794

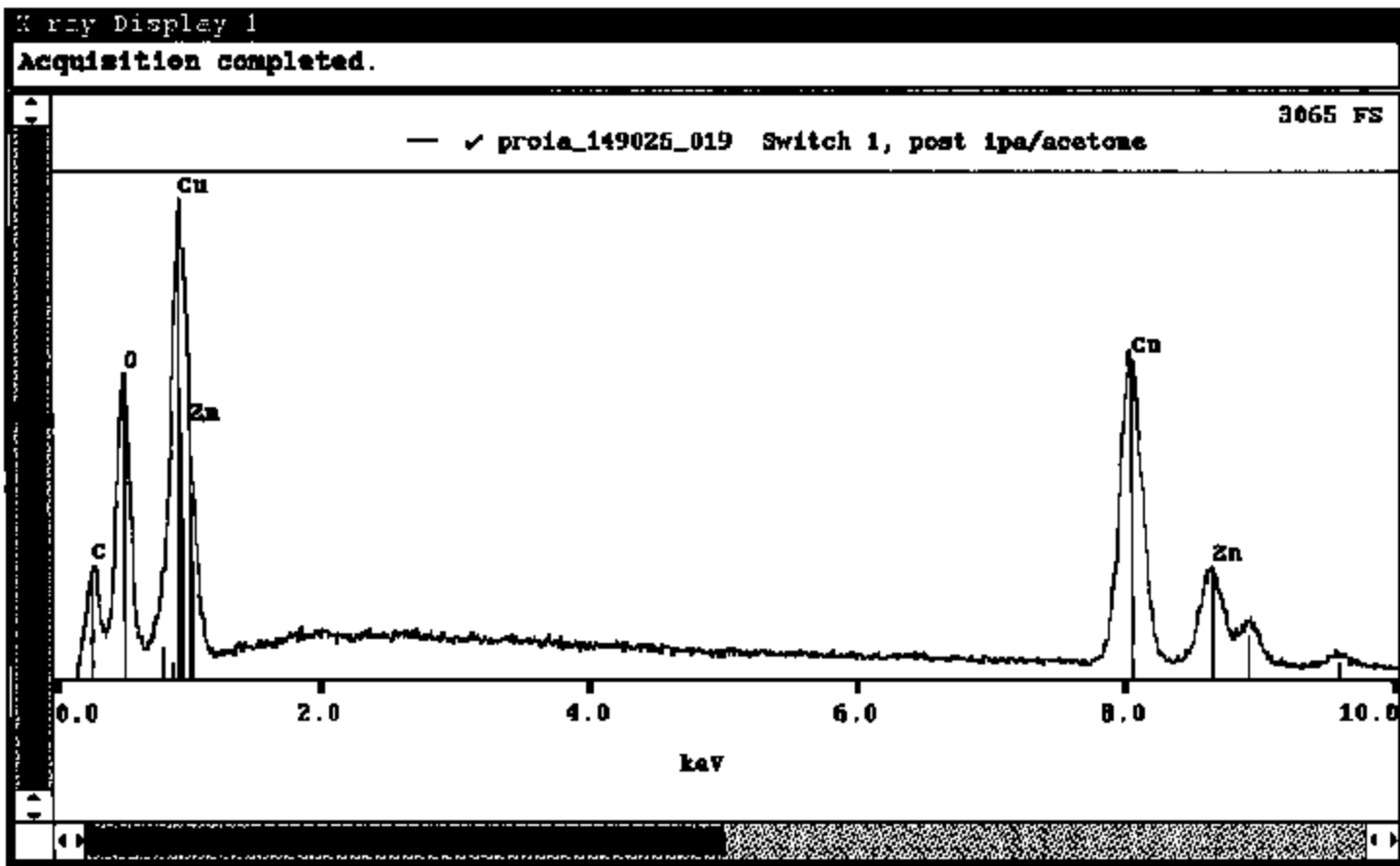


149025 Switch 1 se 60x 19 post ipa/acetone us clean

TINHTOS 11795



TI NHT05 11796



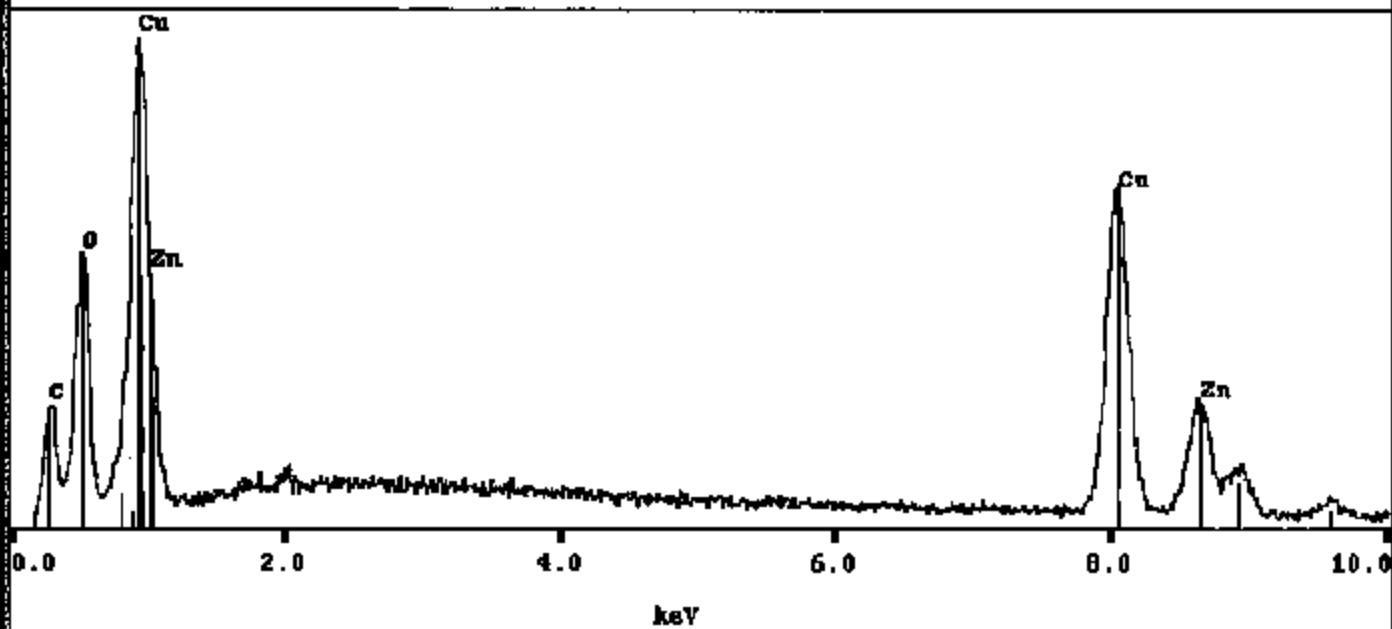
TI NHT05 11797

X-ray Display 1

Acquisition completed.

1315 FS

— ✓ proia\_149025\_020 Switch 1, post ipa/acetone



TI NHT05 11798

Description	#1	#2	#3
Fed X #	8031 8189 5661	8031 8189 5661	8012 1766 1055
Date Code	8127	8127	8127
Found @	Gallatin, TN	Gallatin, TN	Ford - Louisville
Visual Inspection	<ul style="list-style-type: none"> <li>• Parts where installed</li> <li>• Base cavity clean</li> <li>• Stake looks shiny</li> <li>• Contamination looks green / waxy residue on both term.</li> <li>• Contam. Appears to only go half way down terminal</li> </ul>	<ul style="list-style-type: none"> <li>• "</li> <li>• "</li> <li>• "</li> <li>• "</li> </ul>	<ul style="list-style-type: none"> <li>• "</li> <li>• "</li> <li>• "</li> <li>• Contamination looks dark/olive brown.</li> <li>• Contam. Appears to end half way down terminals.</li> </ul>
Continuity Check	Pass	Fail / Intermittent	Pass
Function Test	Pass	Fail - ZPLF	Pass
Cut Open Parts	<ul style="list-style-type: none"> <li>• Yes</li> <li>• Clean inside device &amp; at entry of terminal.</li> </ul>	<ul style="list-style-type: none"> <li>• Yes</li> <li>• "</li> </ul>	<ul style="list-style-type: none"> <li>• Yes</li> <li>• "</li> </ul>
Corrosion Lab	<ul style="list-style-type: none"> <li>• Was not analyzed</li> </ul>	<ul style="list-style-type: none"> <li>• Was not analyzed</li> </ul>	<ul style="list-style-type: none"> <li>• Cut base away from terminals</li> <li>• Took pictures of contaminate / terminals</li> <li>• Contaminate shown to be half way down terminals</li> <li>• Element analysis shows presence of Carbon &amp; Oxygen</li> </ul>



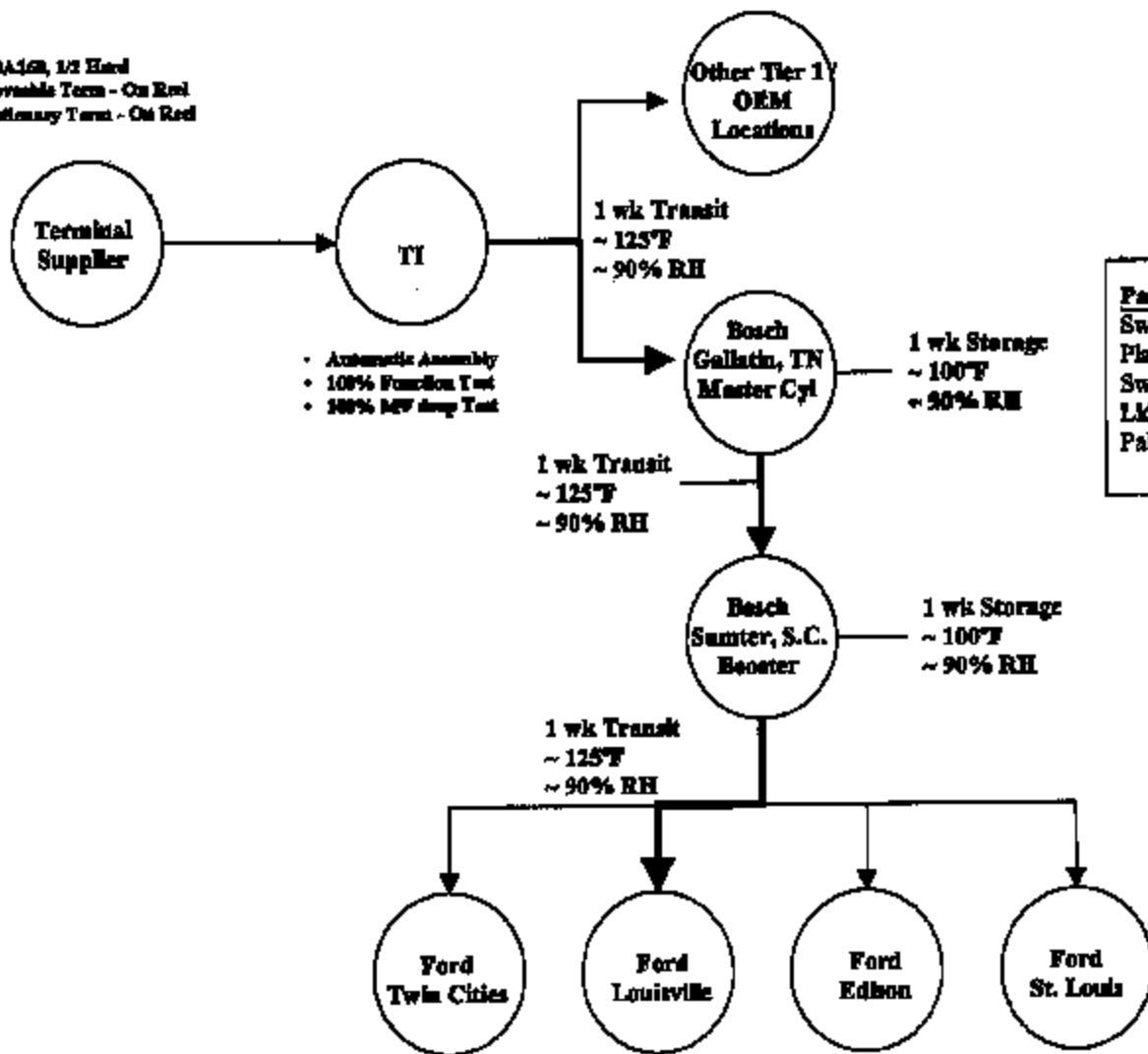
**Actions (Continued)**

<u>Date</u>	<u>Who</u>	<u>Action</u>
6/20	TI	<ul style="list-style-type: none"><li>• Rick Demers (TI Quality) arrives at Bosch Sumter, S.C. plant to assist in inventory sort/certification.</li><li>• Recv'd (2) devices from Mike Ross (Gallatin, TN) w/ green/white powder</li><li>• Recv'd (1) device from Ford - Louisville. Terminals exhibiting olive/brown color</li></ul>
6/20	TI	<ul style="list-style-type: none"><li>• Complete inspection of FG's Inventory via continuity test/green dot on crimp ring. Date codes 8160 - 8169.</li><li>• Production as of 8170 - Initiated 10pc continuity test inspection every box following 100% function test.</li><li>• Boxes passing inspection will have a "Green" dot on box label.</li></ul>
6/21	TI	<ul style="list-style-type: none"><li>• Rick Demers finishes Monday requirements without any findings</li></ul>

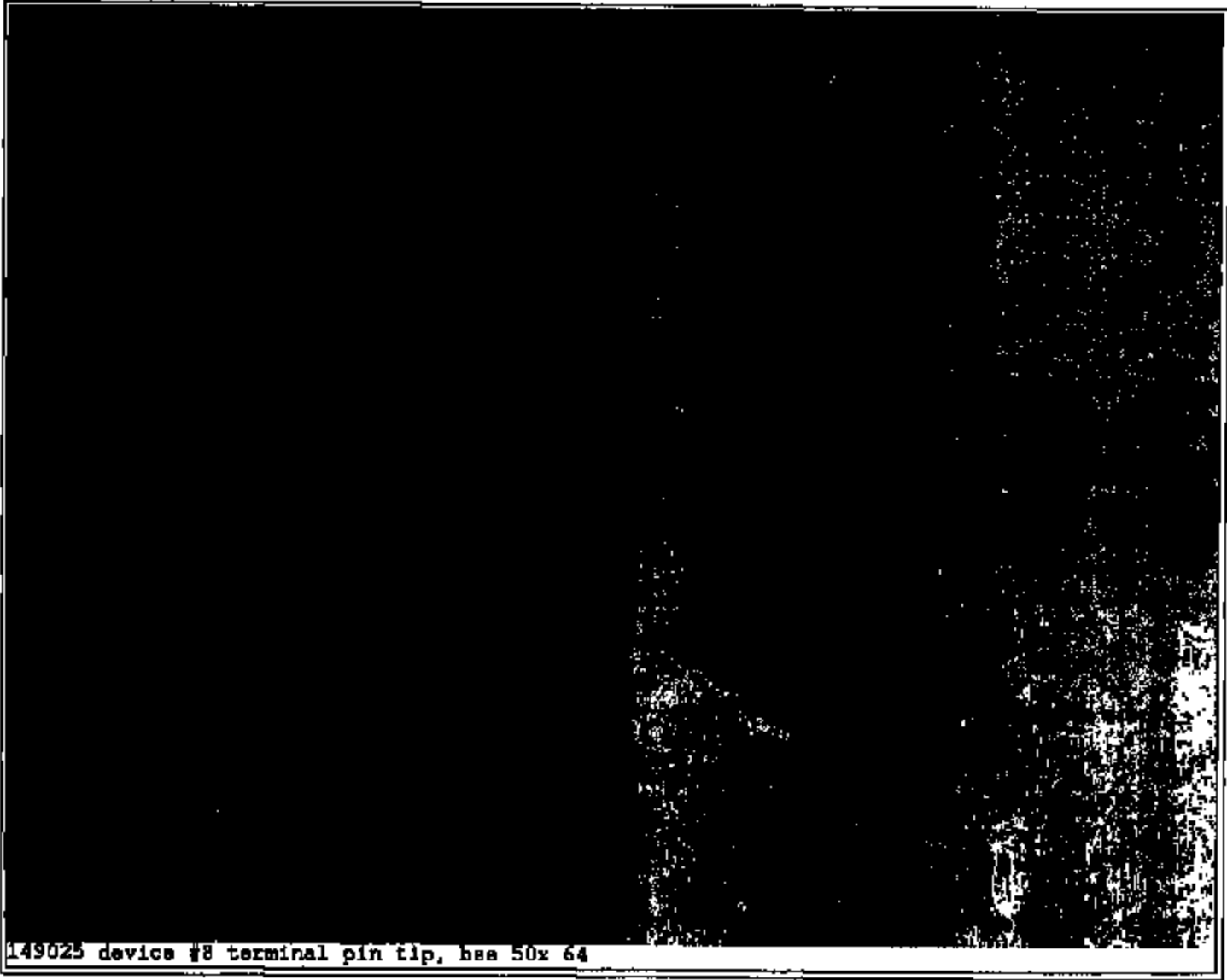
**Actions**

<b>Date</b>	<b>Who</b>	<b>Action</b>
6/18 @ 4:00PM	Bosch - Gallatin, TN	<ul style="list-style-type: none"> <li>• Mike Ross - (Gallatin, TN) called informing TI that the Ford Louisville was experiencing failures @ vehicle roll test. Parts reported to have green/white powder .</li> <li>• 20 vehicles failed - Cruise Control would not set</li> <li>• Parts being sorted @ Ford plant by outside sorting company.</li> <li>• 40 of 1,620 pc shipment found to have no continuity</li> </ul>
6/19	Ford - Louisville	<ul style="list-style-type: none"> <li>• Bosch / Ford initiated inspection / rework loop prior to Vehicle Roll test.</li> <li>• Mating electrical connectors removed, terminals scraped, mating connector applied.</li> <li>• Following this step no failures were found.</li> <li>• Operation continued until 5:00 PM until going to continuity check.</li> <li>• Scrape operation maintained??</li> </ul>
6/19	TI	<ul style="list-style-type: none"> <li>• Initiated 100% continuity test on FGs Inventory followed by Green Dot on side of crimp ring.</li> <li>• Tested 9600 as of 6/20, 7:00 AM - No failures</li> </ul>
6/20	TI / Bosch	<ul style="list-style-type: none"> <li>• Conf. Call w/ Sumter, Gallatin &amp; TI</li> <li>• Natural control group of how parts react under normal shipping/storage conditions</li> <li>• 1 of 800 parts inspected @ Sumter found w/no continuity</li> <li>• 0 of ??? parts inspected @ Gallatin found</li> <li>• 9:00 AM conf. Call Monday, 6/22</li> </ul>

- CDA168, 1/2 Hard
- Movable Term - On Rod
- Stationary Term - On Rod



**Packaging**  
 Switch / Master Cylinder Sub-assy  
 Plastic (Re-usable) Pallets - Stacked  
 Switches are positioned upright  
 Lid placed on completed pallet  
 Pallet stretch wrapped



149025 device #8 terminal pin tip, hse 50x 64

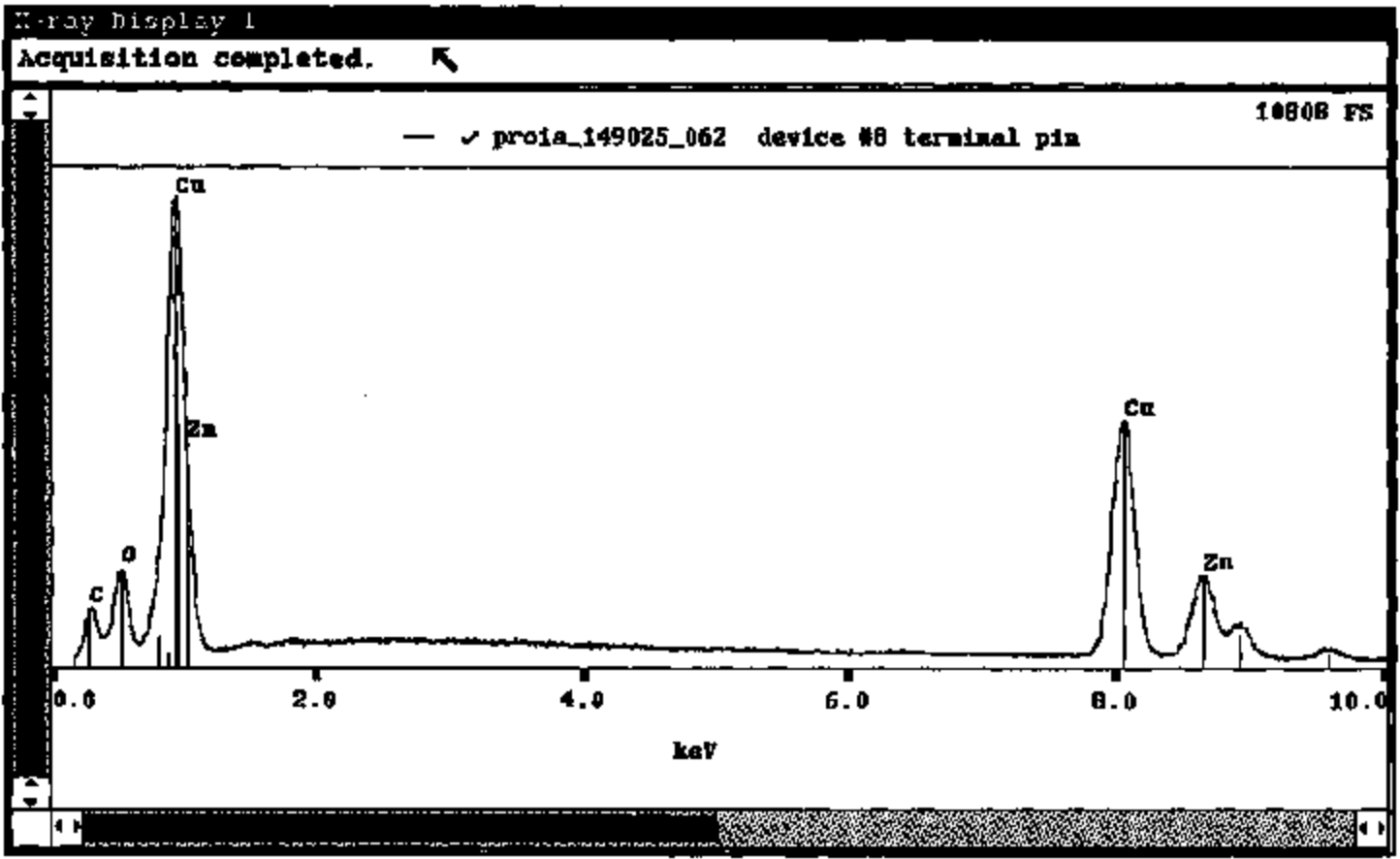


149025 device #8 terminal pin tip, ss 50x 63

T1 NHT05 11806

149025 device #8 terminal pin tip, se 500x 65

TI NHT05 11807



TI NHT05 11808

149025 devices 6, 8 and 11 terminal pin tips, bse 11x 69

T1NHT05 11809



149025 device #8 end of deposit se 1000x 70

TI NHT05 11810

149025 device #8 base of terminal pin se 1000x 71

TINHTOS 11811

149025 device #8 base of terminal pin se 1000x 71

TI NHT05 11812

GALLATIN



149025 device #5, spots at terminal base, ac 30

032 OVERALL Base

149025 device #5, spots at terminal base, base 31

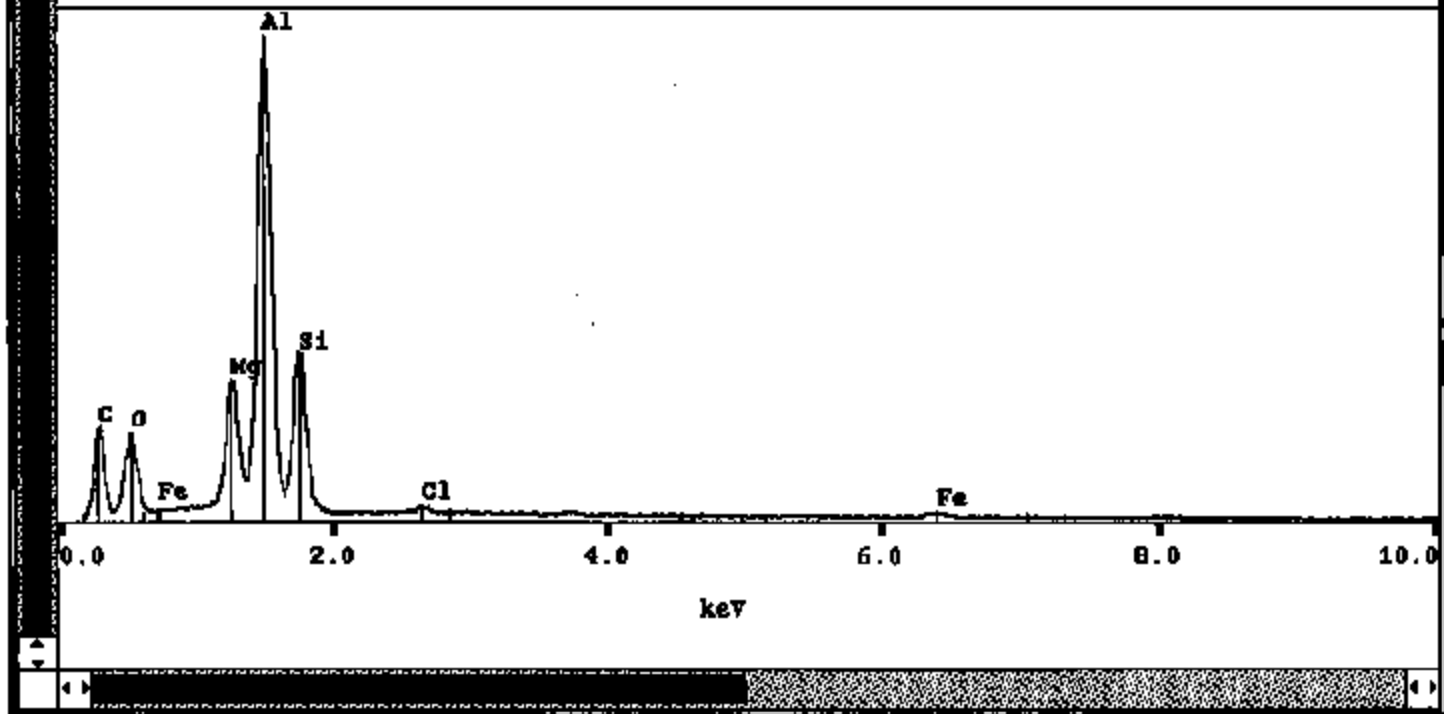
TI NHT05 11815

Spectrum Display 1

Acquisition completed.

8741 FS

— ✓ proia\_149025\_030 spots at terminal base



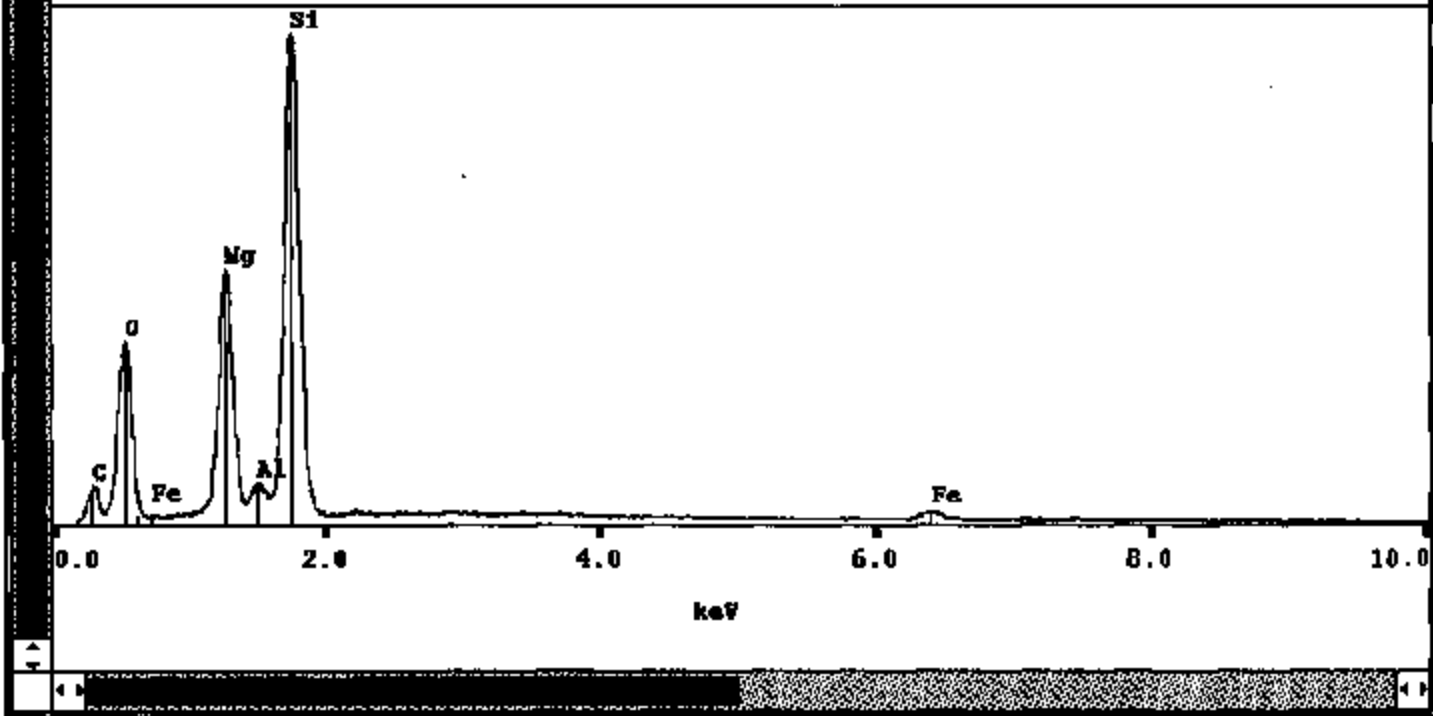
TI NHT05 11816

X-ray Display 1

Acquisition completed.

15328 FS

— ✓ proia\_149025\_031 spots at terminal base



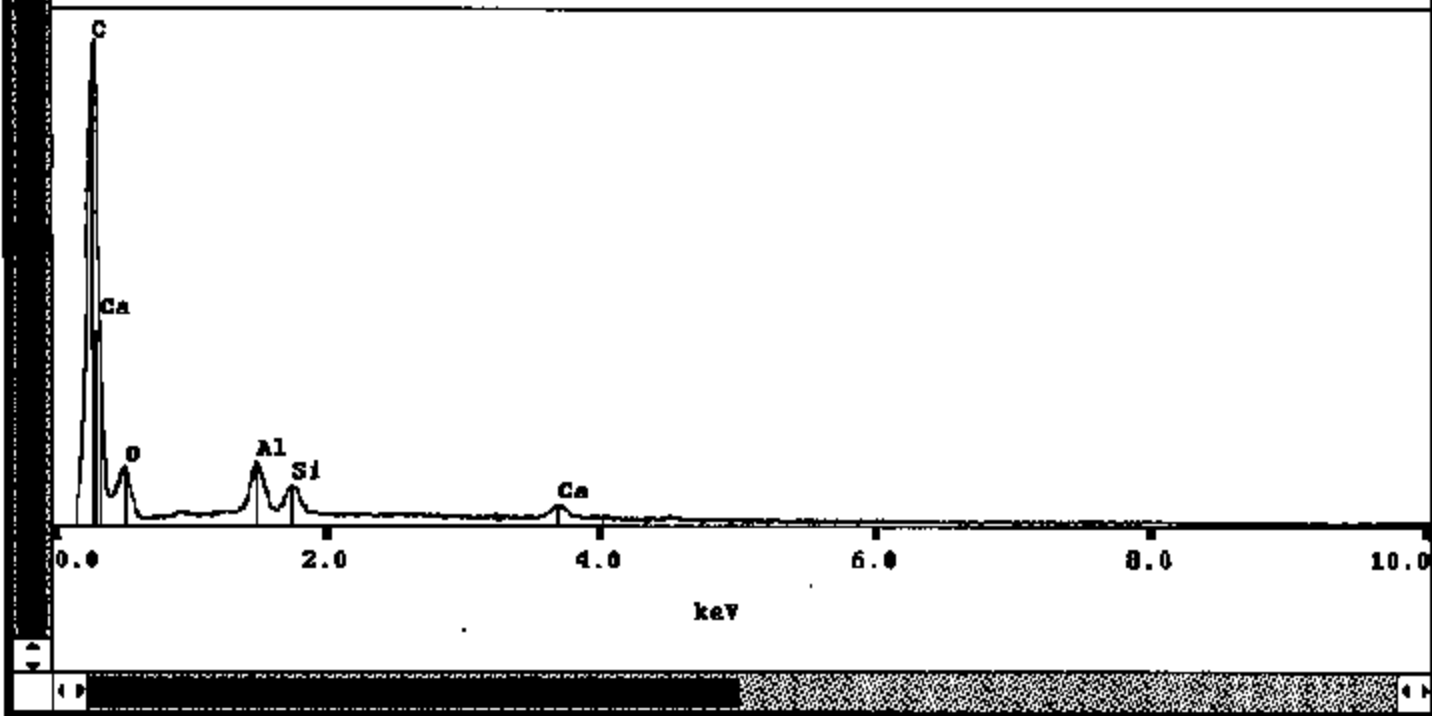
TI NHT05 11817

Energy Display 1

Acquisition completed.

12703 FS

— ✓ proia\_149025\_032 spots at terminal base



TI NHT05 11818

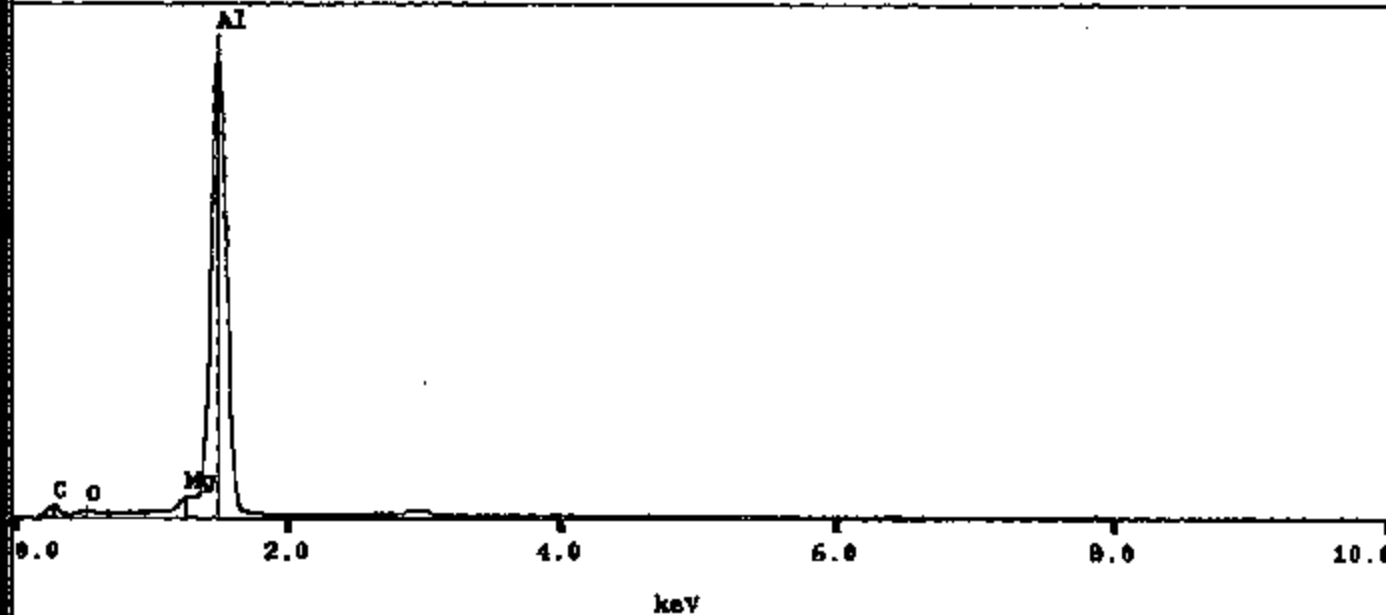


Spectrum Display 1

Acquisition completed.

35697 FS

✓ proia\_149025\_033 spots at terminal base

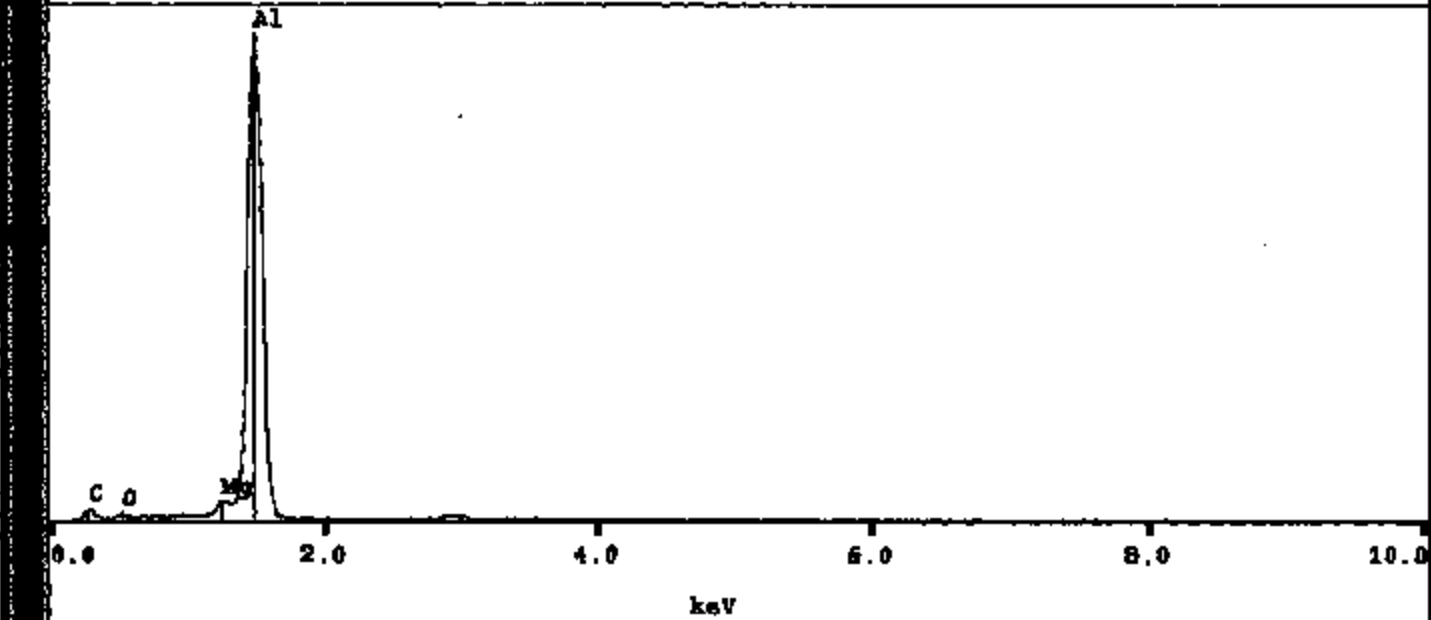


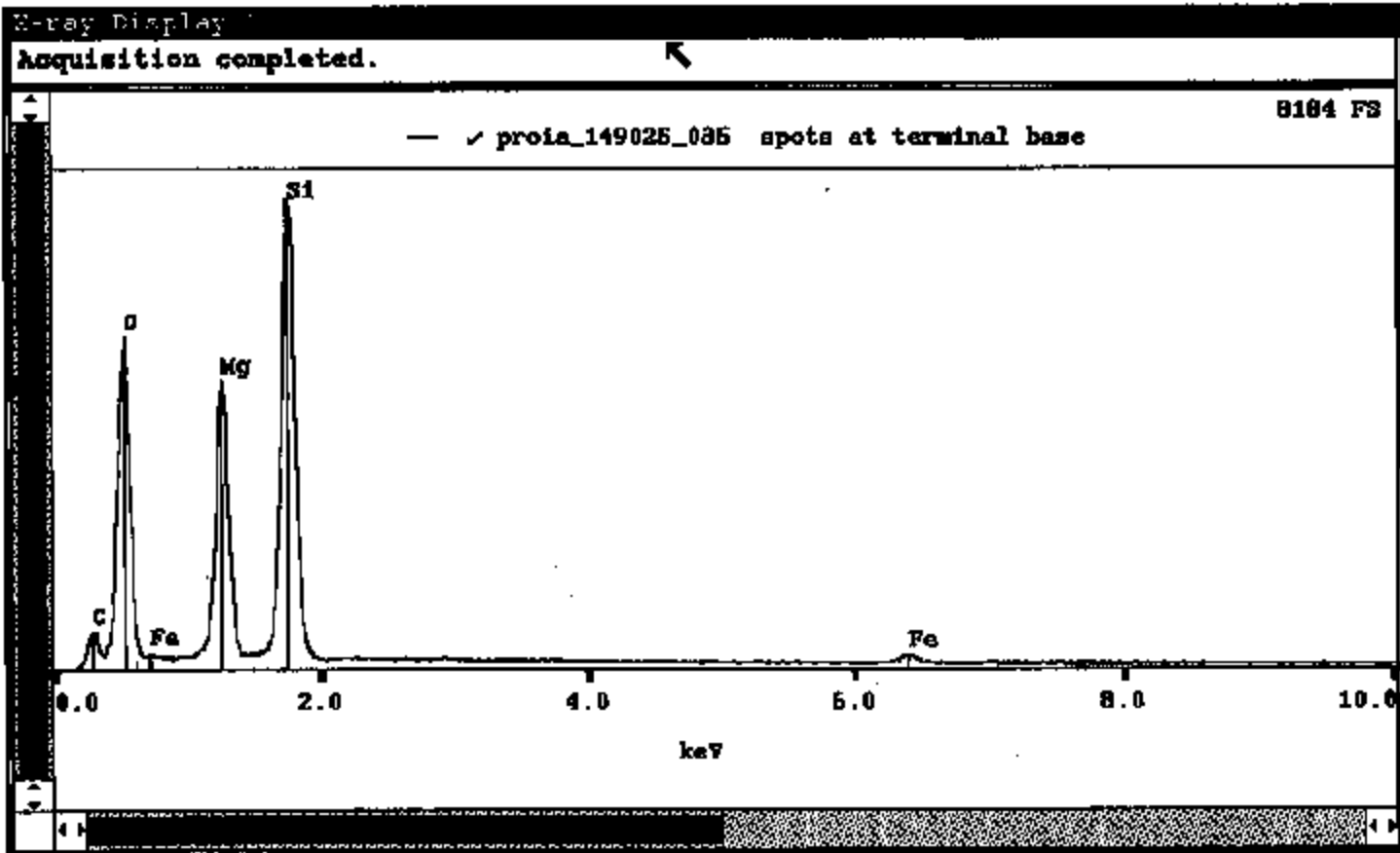
E-ray Display 1

Acquisition completed.

17838 FS

— ✓ proia\_149025\_034 spots at terminal base





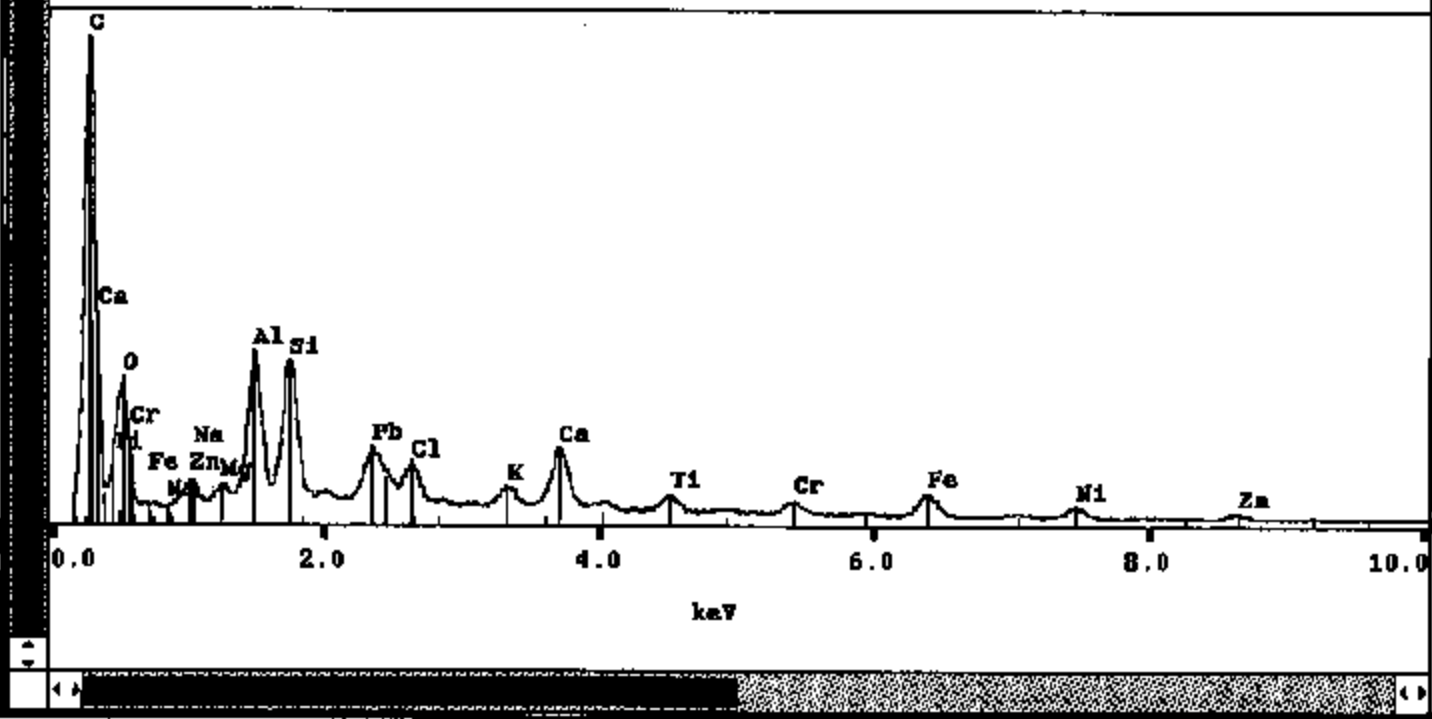
TI NHT05 11821

Wave Display 1

Acquisition completed.

11039 FS

✓ proia\_149025\_036 spots at terminal base



TI NHT05 11822



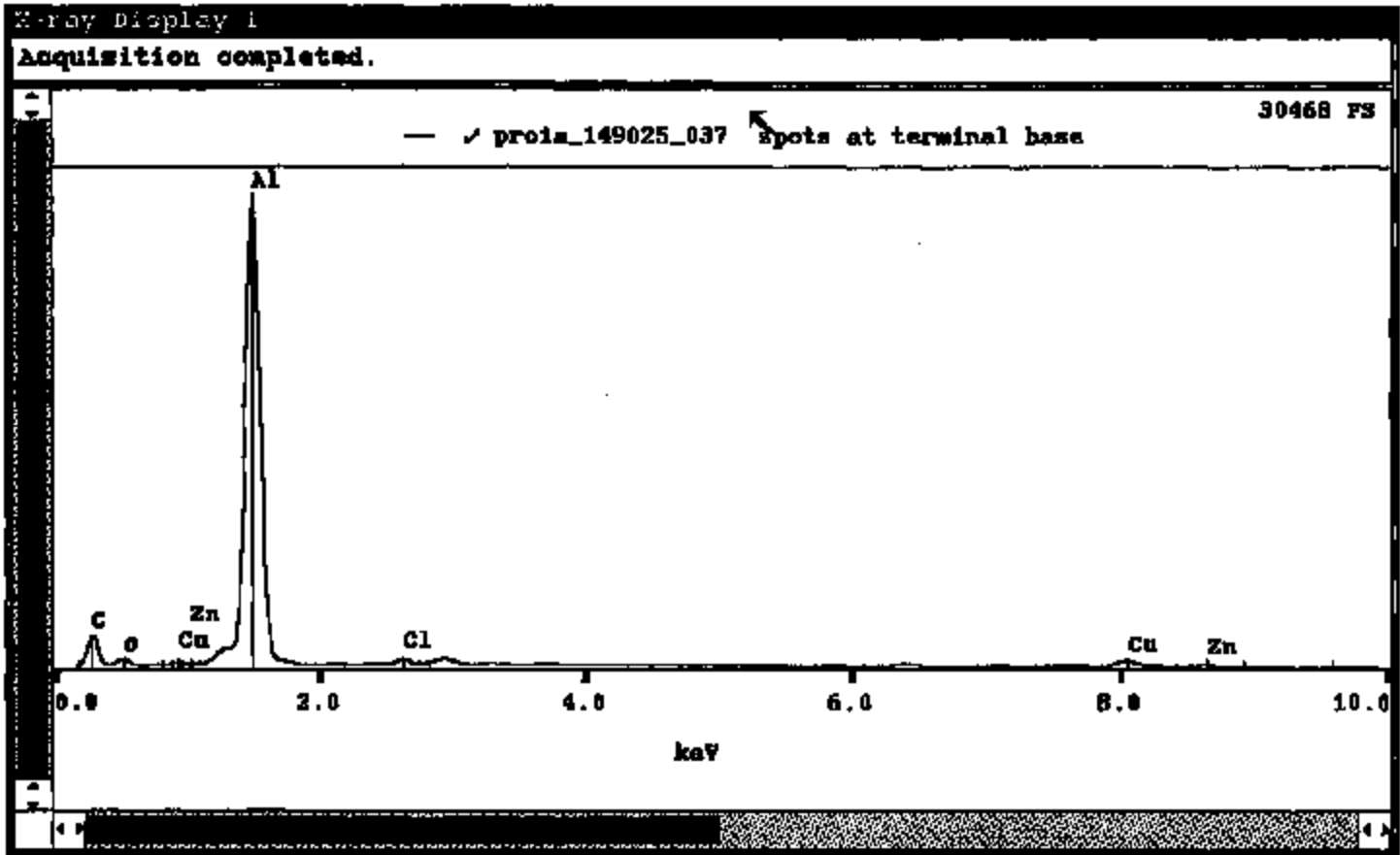
149025 device #5, spots at terminal base, bse 33

T1NHT05 11823

TI NHTOS 11824



149025 device #5, spots at terminal base, se 32



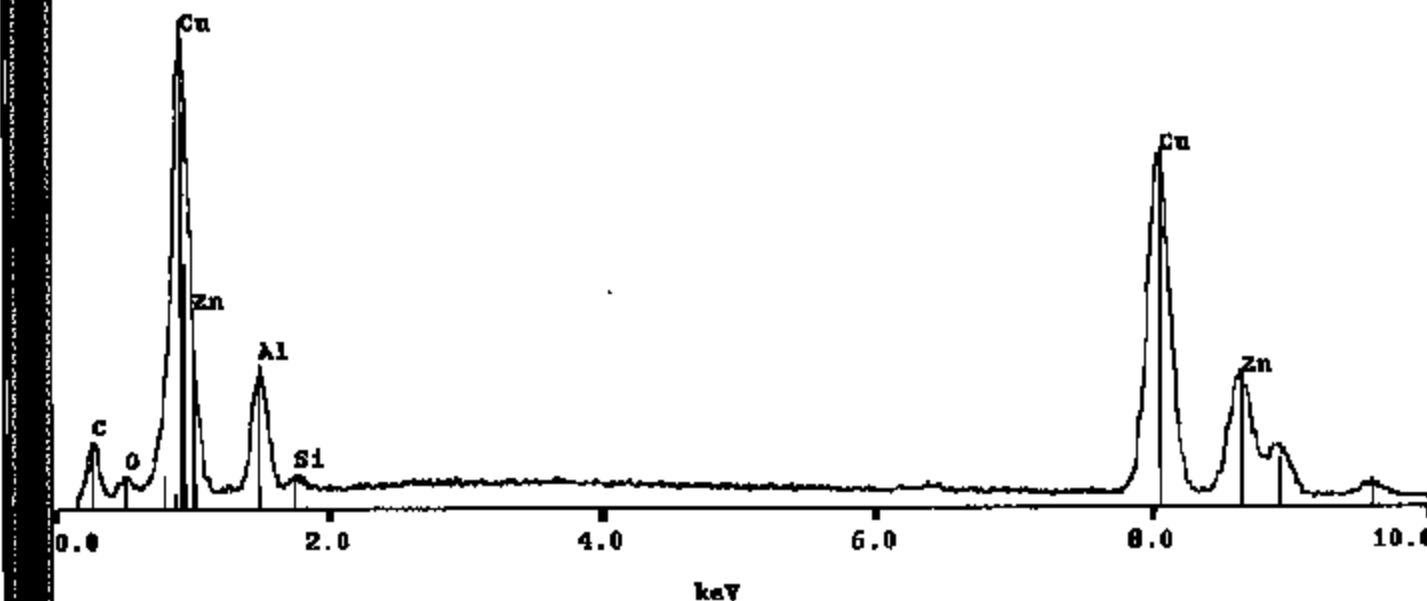
TI NHT05 11825

X-ray Display 1

Acquisition completed.

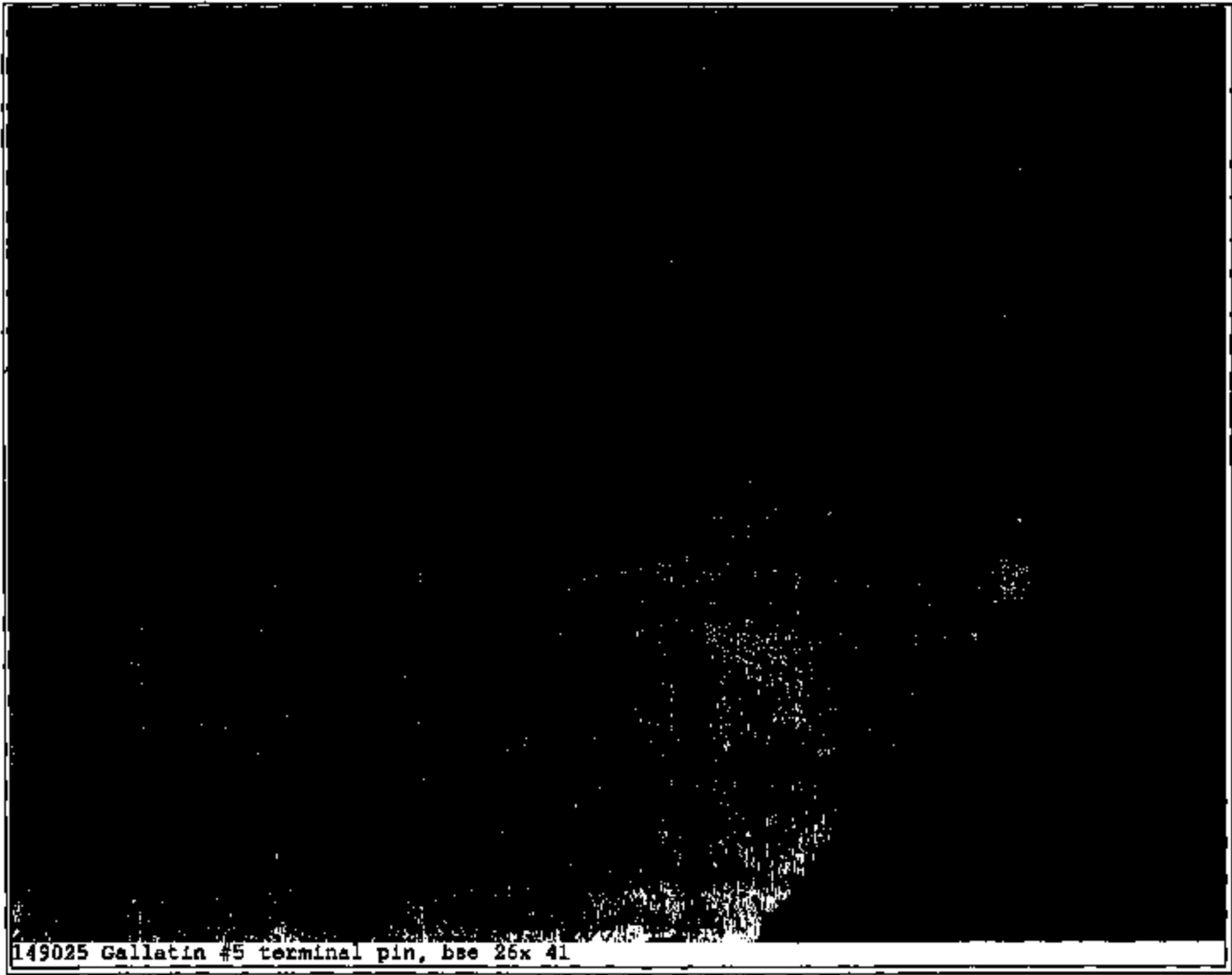
5609 FS

— ✓ proia\_149025\_030 spots at terminal base



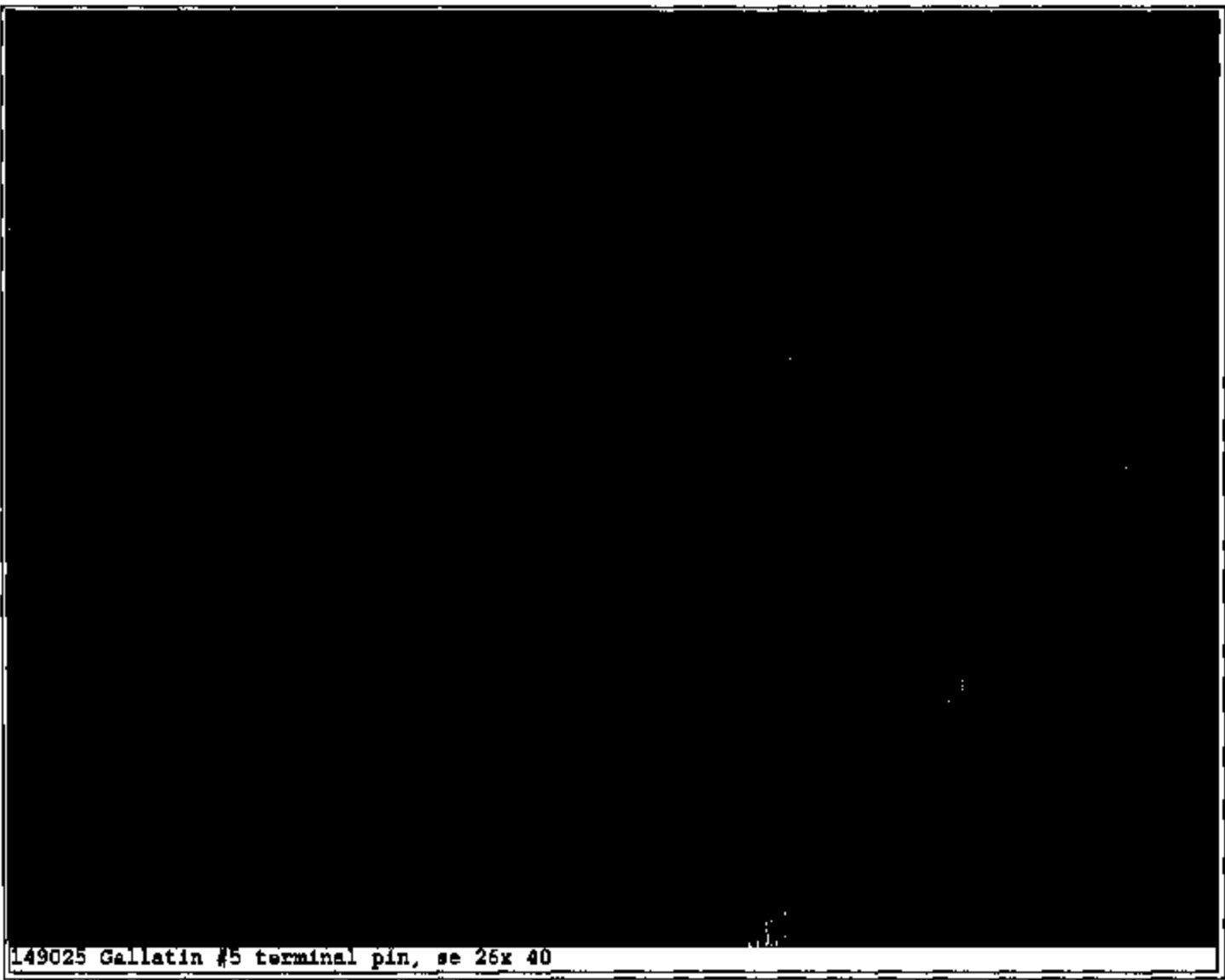
TI NHT05 11826





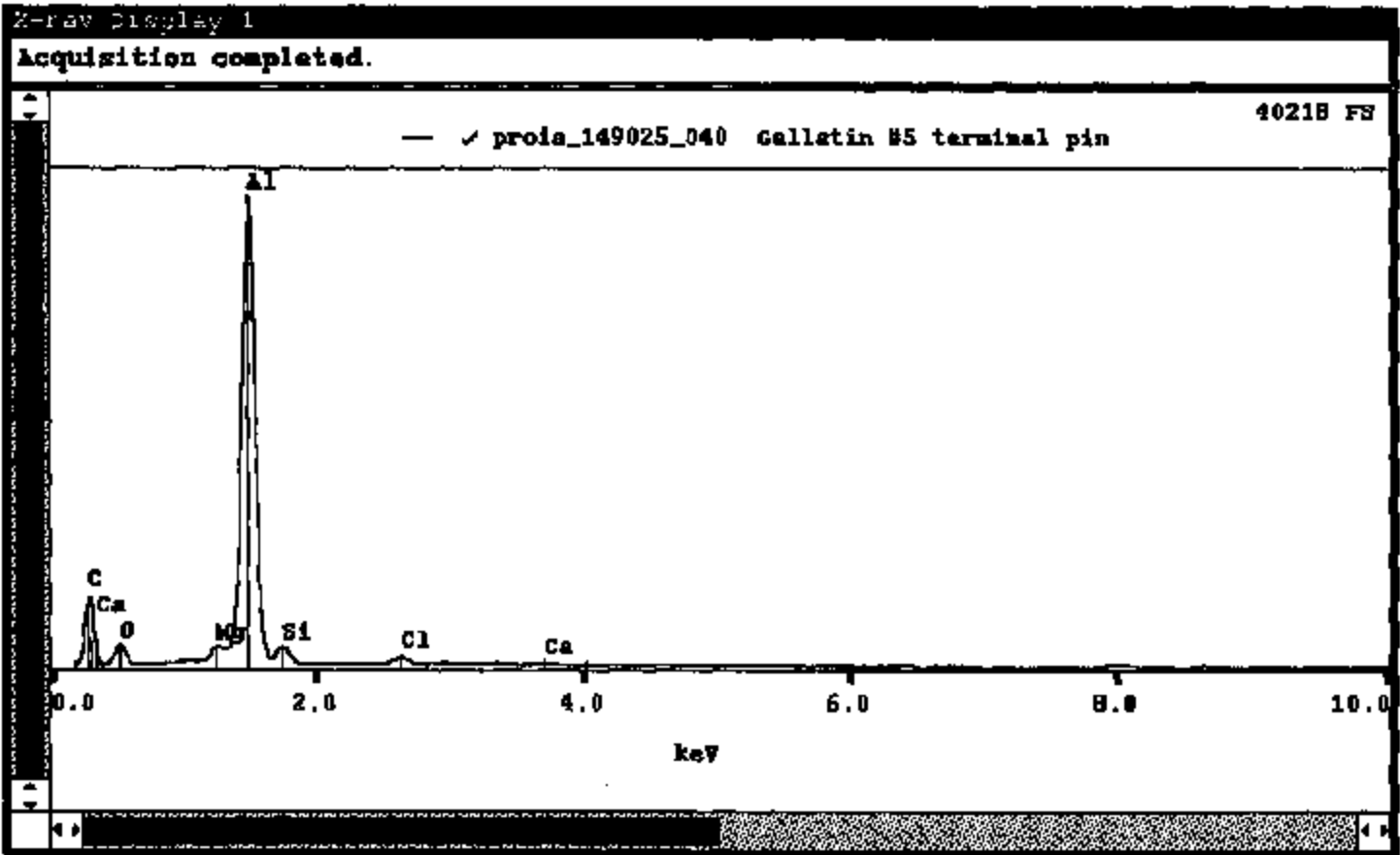
149025 Gallatin #5 terminal pin, base 26x 41

TI NHT05 11828



149025 Gallatin #5 terminal pin, se 26x 40

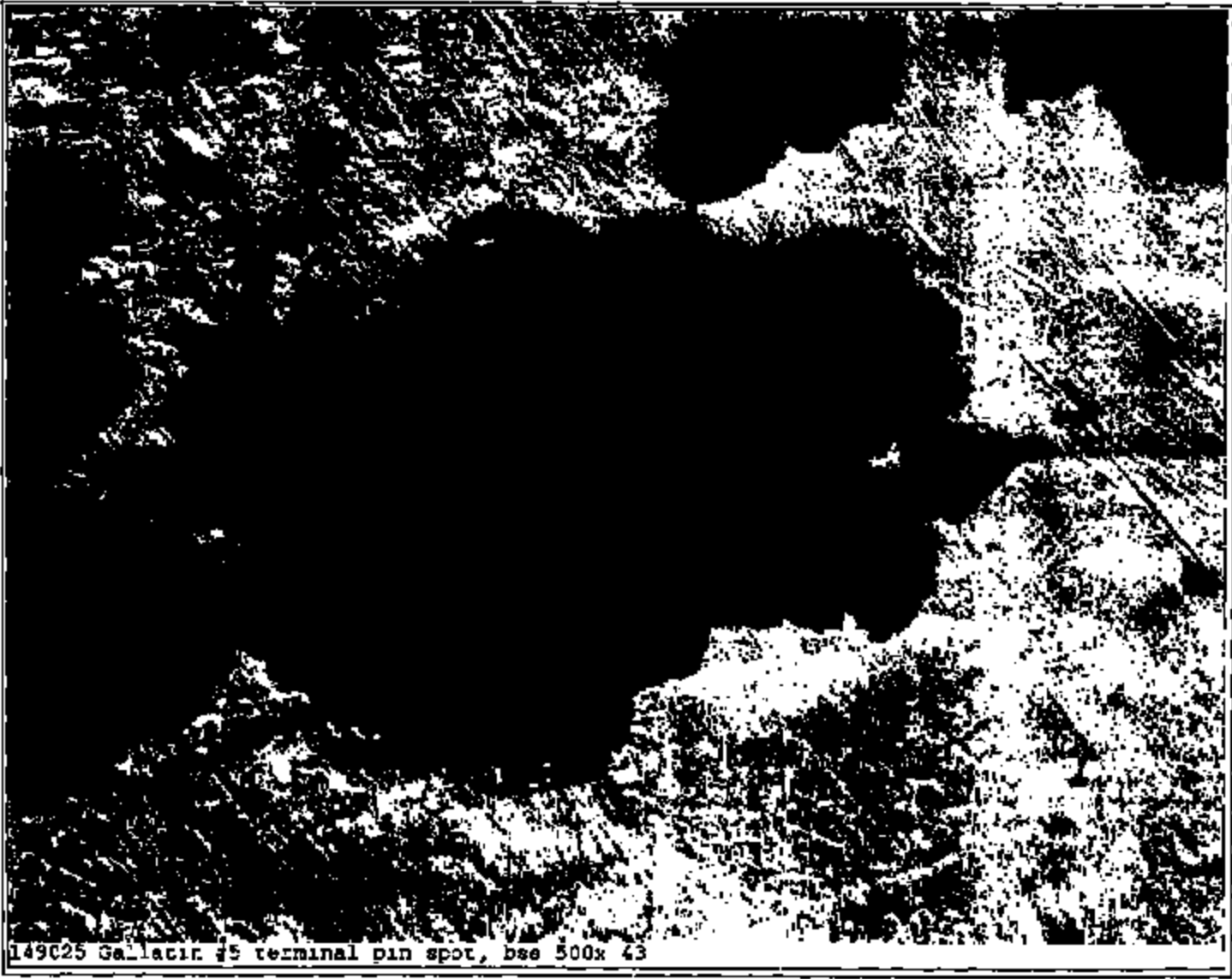
TI NHTOS 11829



TI NHT05 11830

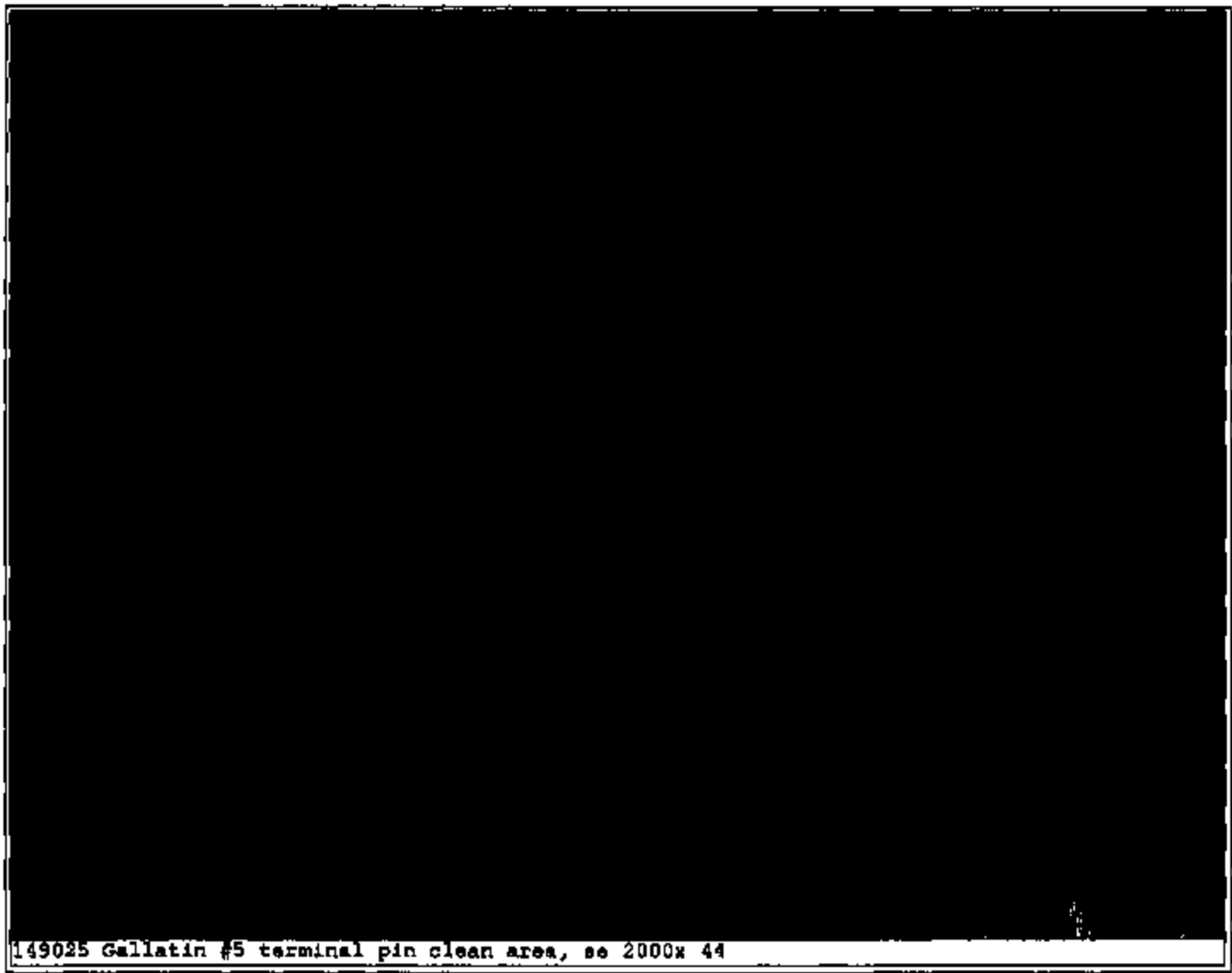
149025 Gallatin #5 terminal pin spot, ea 500x 42

TI NH705 11831



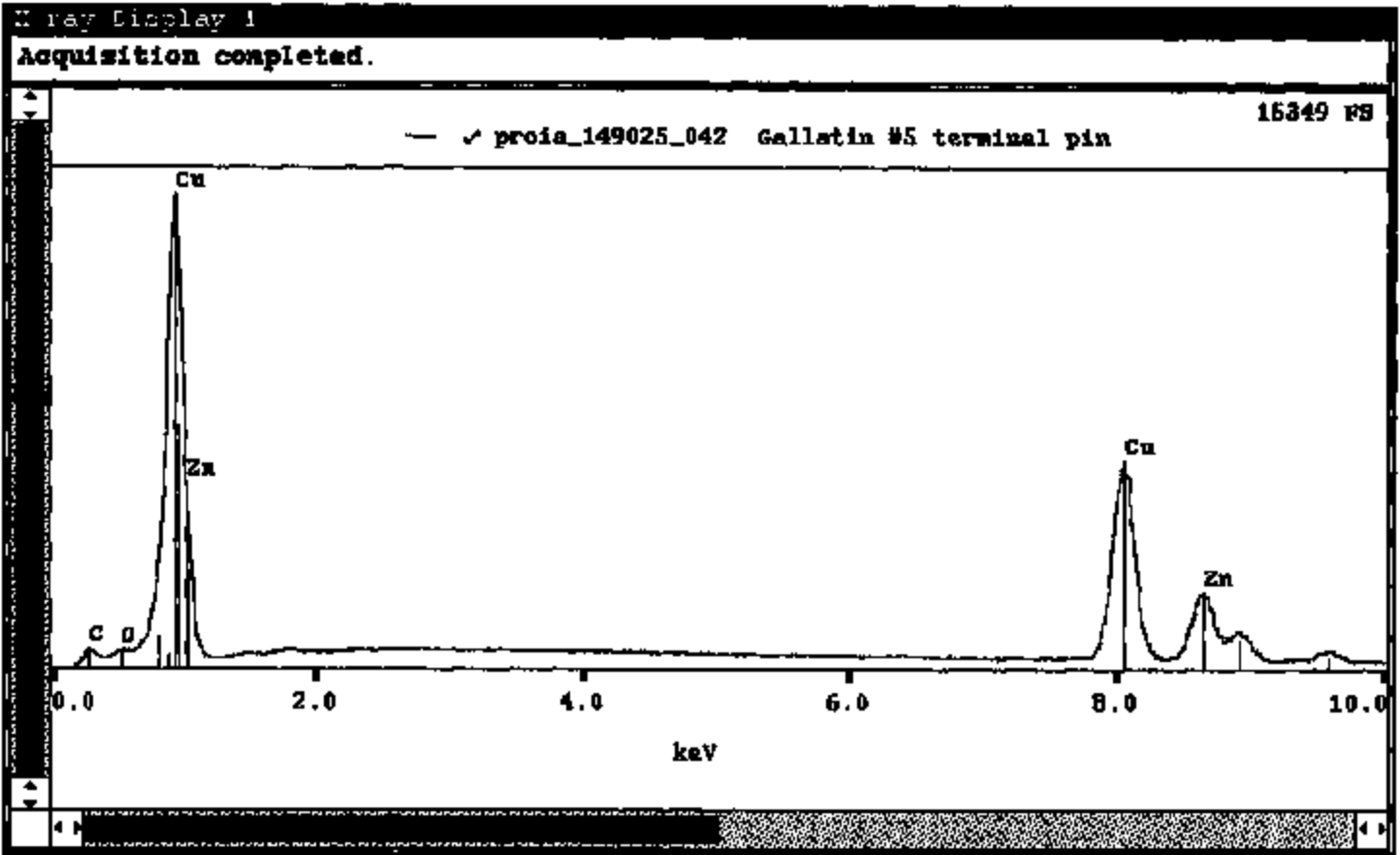
149025 Gall. lacina #5 terminal pin spot, base 500x 43

TI NHT05 11832



149025 Gallatin #5 terminal pin clean area, se 2000x 44

TI NHT05 11833

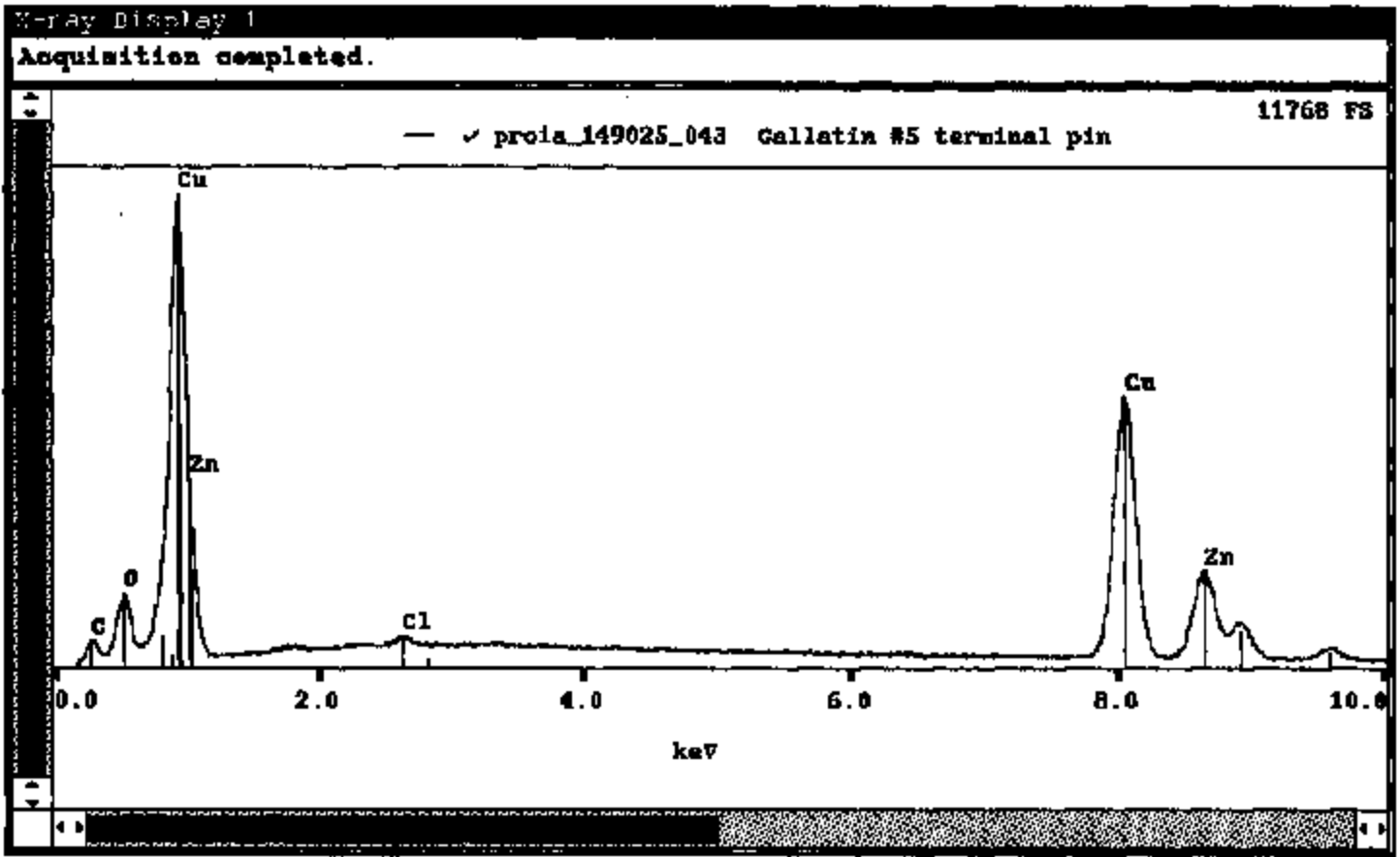


TI NHT05 11834

149025 Gallatin #5 terminal pin in plastic, se 29x 45

TINHT05 11835





TINHT05 11838

149025 Callatin #5 terminal pin in plastic, ss 29x 45

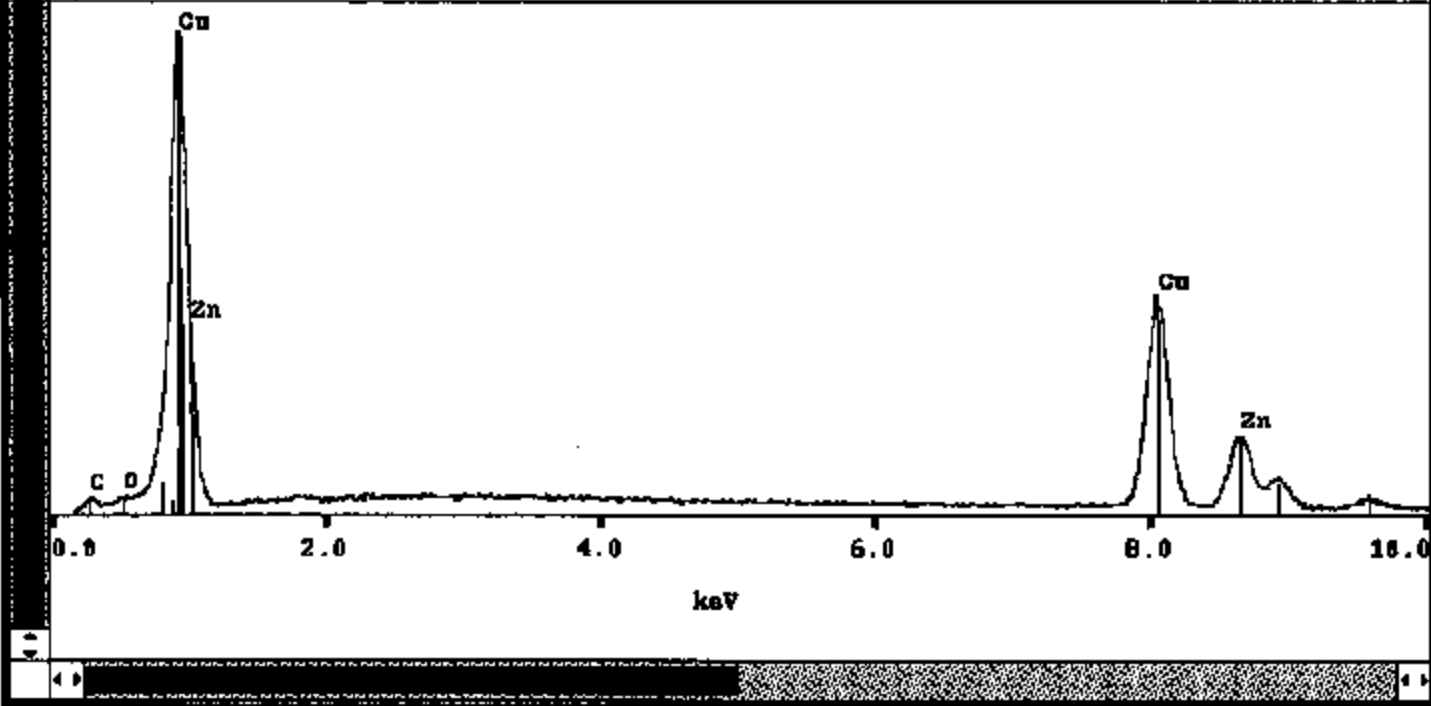
TI NHT05 11837

X ray Display 1

Acquisition completed.

✓ proia\_149025\_044 Gallatin #5 terminal pin

5056 FS



TINHT05 11839

149025 Gallatin #5 terminal pin in plastic, se 1000x 50

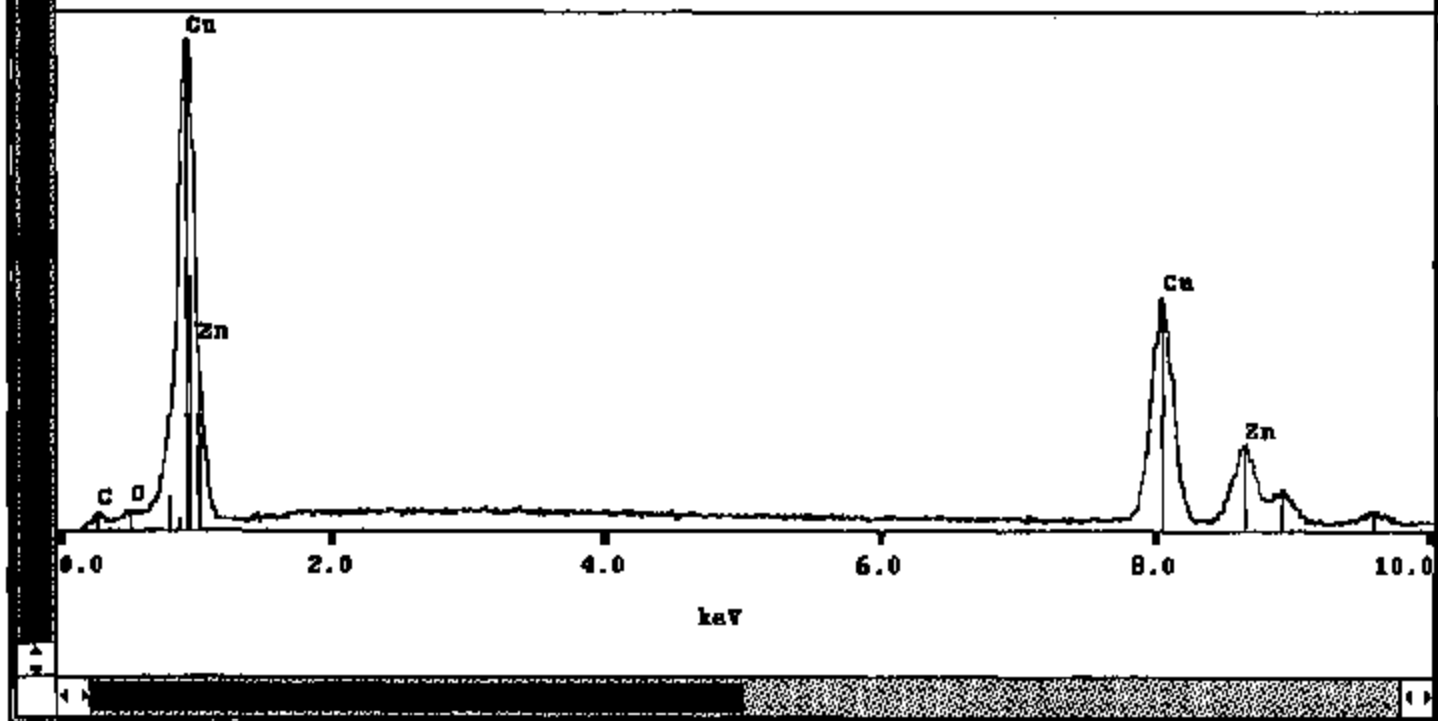
TINHTOS 11839

X-ray Display 1

Acquisition completed.

— ✓ proia\_149025\_045 Gallatin #5 terminal pin

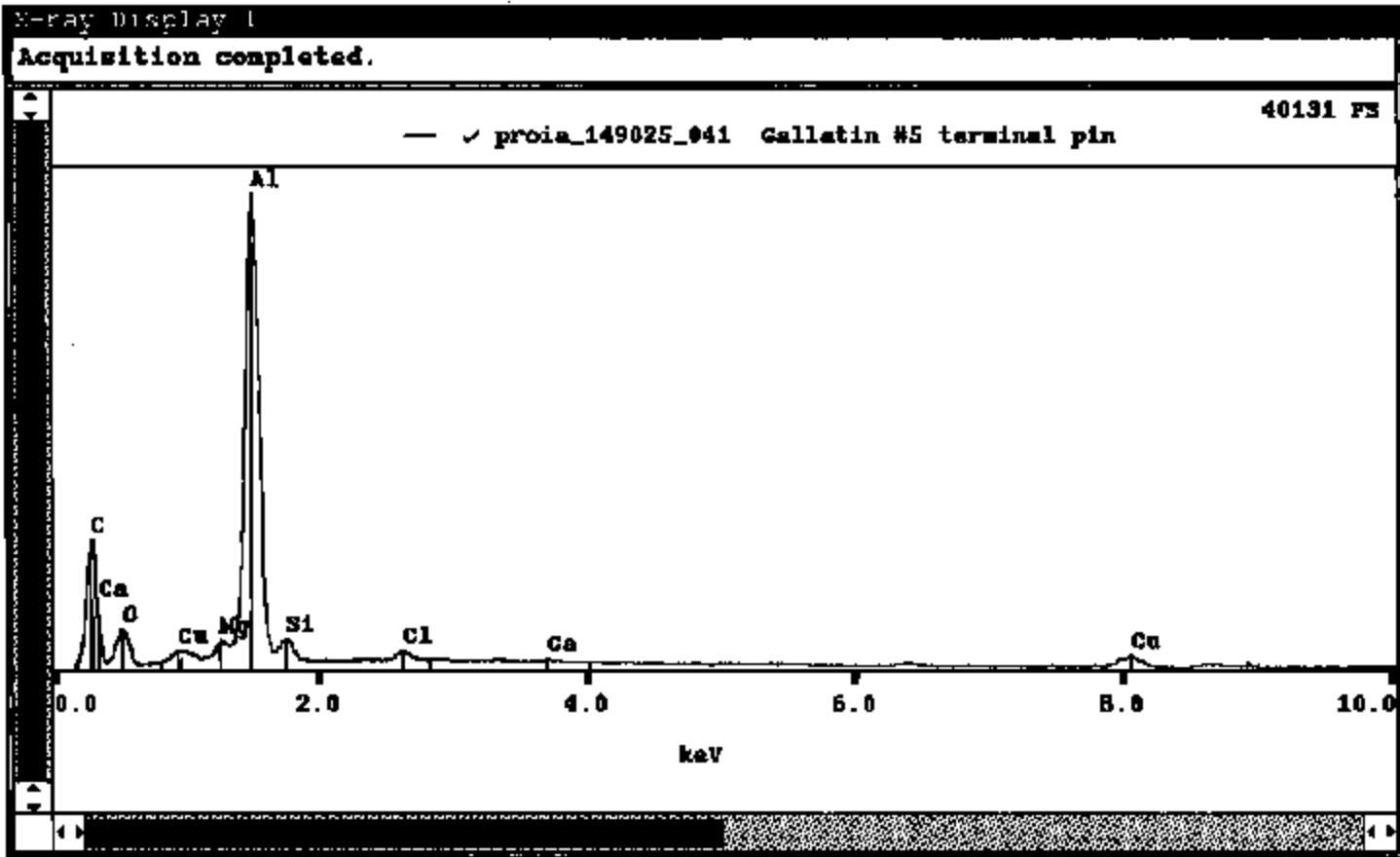
3985 FS



TI NHT05 11840

149025 Gallatin #5 terminal pin in plastic, se 200x 51

TINHTOS 11841



TI NHT05 11842