

**RQ04-011**  
**FORD**  
**APRIL 26, 2005**  
**REQUEST 8**  
**BOOK 41**  
**PART 3 OF 6**

503 USA	171431	E64	USA
360 USA	174484	1	USA
319 USA	141200	1	USA
618 USA	153118	2	USA
847 USA	141067	1	USA
570 USA	116302	1	USA
302 USA	116213	1	USA
952 USA	121718	2	USA
706 USA	121450	2	USA
663 USA	124475	1	USA
908 USA	141815	E64	USA
337 USA	123271	2	USA

304 USA	147545	1	USA
801 USA	158558	1	USA
318 USA	141526	E84	USA
352 USA	124402	E84	USA
515 USA	153548	2	USA
419 USA	144905	E84	USA
606 USA	147405	2	USA
207 USA	111044	2	USA
336 USA	121617	E84	USA

724 USA	144026	2	USA
582 USA	171055	1	USA
830 USA	152908	2	USA
413 USA	118052	2	USA
508 USA	111647	2	USA
630 USA	141442	2	USA
417 USA	153482	1	USA
607 USA	113529	1	USA

804 USA	124208	1	USA
628 USA	172523	2	USA
818 USA	171040	2	USA
931 USA	123348	E84	USA
208 USA	158805	1	USA
507 USA	158821	E84	USA
937 USA	147213	1	USA
210 USA	152718	E84	USA

808 USA	172414	1	USA
812 USA	147427	1	USA
513 USA	147001	1	USA
804 USA	127072	1	USA
419 USA	148223	1	USA
352 USA	124521	1	USA
973 USA	113452	2	USA
510 USA	172007	2	USA
916 USA	172207	2	USA
419 USA	147128	E84	USA
408 USA	148409	2	USA

517 USA	148580	2	USA
704 USA	121208	E84	USA
USA	152018	2	USA
865 USA	121275	E84	USA
208 USA	172425	1	USA
570 USA	116302	1	USA
863 USA	124425	E84	USA
281 USA	152055	2	USA

708 USA	121081	2	USA
330 USA	144083	1	USA
419 USA	148223	1	USA
360 USA	174021	2	USA
518 USA	113815	2	USA
816 USA	148589	1	USA
414 USA	141033	1	USA
815 USA	123198	EB4	USA
785 USA	147420	1	USA
808 USA	172414	1	USA
818 USA	171040	1	USA



717 USA	116532	2	USA
253 USA	174205	E84	USA
616 USA	148584	2	USA
816 USA	163417	2	USA
409 USA	152092	E84	USA
423 USA	121201	E83	USA
512 USA	152904	1	USA
972 USA	152012	1	USA
972 USA	152012	1	USA
979 USA	152768	1	USA
770 USA	121480	E84	USA

FSD Copy of Cut Data Rcvd from Dennis_QRT_CD	FSD Copy of Cut Data Rcvd from Dennis_VFG_CD	FSD Copy of Cut Data Rcvd from Dennis_AWS_VL_CD	FSD Copy of Cut Data Rcvd from Dennis_VRT_CD	FSD Copy of Cut Data Rcvd from Dennis_TIS_FLAG
--	--	---	--	--

Q21	V05	F7	S08	
-----	-----	----	-----	--

Q21	V05	F7	S08	
-----	-----	----	-----	--

Q21	V05	F7	S08	②
-----	-----	----	-----	---

Q21	V05	F7	S08	
-----	-----	----	-----	--

Q21	V05	F7	S08	
-----	-----	----	-----	--

Q21	V05	F7	S08	
-----	-----	----	-----	--

Q21	V05	F7	S08	
-----	-----	----	-----	--

Q21	V05	F7	S08	
-----	-----	----	-----	--

Q21	V05	F7	S08	
-----	-----	----	-----	--

Q21	V05	F7	S08	
-----	-----	----	-----	--

Q21	V05	F7	S08	
-----	-----	----	-----	--

Q21	V05	F7	S08
Q21	V05	F7	S08
Q21	V05	F7	S08
Q21	V05	F7	S08
Q21	V05	F7	S08
Q21	V05	F7	S08
Q21	V05	F7	S08
Q21	V05	F7	S08
Q21	V05	F7	S08
Q21	V06	F7	S08
Q21	V06	F7	S08
Q21	V05	F7	S08

④

Q21 V05 F7 S08

Q21 V05 F7 S08

Q21 V05 F7 S08

Q21 V05 F7 S08

Q21 V05 F7 S08

Q21 V05 F7 S08 @

Q21 V05 F7 S08

Q21 V05 F7 S08

Q21 V05 F7 S08

Q21 V05 F7 S08

Q21 V05 F7 S08

Q21 V05 F7 S08

Q21 V05 F7 S08

Q21 V05 F7 S08

Q21 V05 F7 S08

Q21 V05 F7 S08

Q21 V05 F7 S08

Q21 V05 F7 S08

Q21	V05	F7	S08
-----	-----	----	-----

Q21	V05	F7	S08
-----	-----	----	-----

Q21	V05	F7	S08
-----	-----	----	-----

Q21	V05	F7	S08
-----	-----	----	-----

Q21	V06	F7	S08
-----	-----	----	-----

Q21	V05	F7	S08
-----	-----	----	-----

Q21	V05	F7	S08
-----	-----	----	-----

Q21	V05	F7	S08
-----	-----	----	-----

Q21	V05	F7	S08
-----	-----	----	-----

Q21	V05	F7	S08
-----	-----	----	-----

ROB-011 18574

Q21	V05	F7	S08
Q21	V05	F7	S08
Q21	V05	F7	S08
Q21	V05	F7	S08
Q21	V05	F7	S08
Q21	V05	F7	S08
Q21	V05	F7	S08
Q21	V05	F7	S08
Q21	V05	F7	S08
Q21	V05	F7	S08
Q21	V05	F7	S08
Q21	V03	F7	S08

Q21 V05 F7 S08

Q21 V05 F7 S08

Q21 V05 F7 S08

Q21 V05 F7 S08

Q21 V05 F7 S08

Q21 V06 F7 S08

Q21 V05 F7 S08

Q21 V05 F7 S08

Q21 V05 F7 S08

②



Q21 V05 F7 S08

Q21 V05 F7 S08

Q21 V05 F7 S08

Q21 V05 F7 S08

Q21 V05 F7 S08

Q21 V05 F7 S08

Q21 V05 F7 S08

Q21 V05 F7 S08

Q21	V05	F7	S08
-----	-----	----	-----

Q21	V05	F7	S08
-----	-----	----	-----

Q21	V05	F7	S08
Q21	V05	F7	S08

Q21	V05	F7	S08
-----	-----	----	-----

Q21	V05	F7	S08
-----	-----	----	-----

Q21	V05	F7	S08
-----	-----	----	-----

Q21	V05	F7	S08
-----	-----	----	-----

Q21	V05	F7	S08
Q21	V05	F7	S08
Q21	V05	F7	S08
Q21	V05	F7	S08
Q21	V05	F7	S08
Q21	V05	F7	S08
Q21	V05	F7	S08
Q21	V05	F7	S08
Q21	V05	F7	S08
Q21	V05	F7	S08
Q21	V05	F7	S08

Q21	V05	F7	S08	
Q21	V05	F7	S08	@
Q21	V05	F7	S08	
Q21	V05	F7	S08	
Q21	V05	F7	S08	
Q21	V05	F7	S08	
Q21	V05	F7	S08	
Q21	V05	F7	S08	

NOV-011 1958

Q21	V05	F7	S08
Q21	V05	F7	S08
Q21	V05	F7	S08
Q21	V05	F7	S08
Q21	V05	F7	S08
Q21	V06	F7	S08
Q21	V05	F7	S08
Q21	V05	F7	S08
Q21	V05	F7	S08
Q21	V05	F7	S08

Q21 V05 F7 S08

Q21 V05 F7 S08

Q21 V05 F7 S08  
Q21 V05 F7 S08

Q21 V05 F7 S08

Q21 V05 F7 S08

Q21 V05 F7 S08

Q21 V05 F7 S08

Q21 V05 F7 S08

Q21 V05 F7 S08

Q21 V05 F7 S08

7/21/2001	3/19/2002	241.00
7/17/2001	3/6/2002	232.00
7/24/2001	3/4/2002	223.00
10/3/2001	5/8/2002	217.00
8/14/2001	3/11/2002	209.00
7/31/2001	2/18/2002	202.00
9/4/2001	3/25/2002	202.00
7/23/2001	2/9/2002	201.00
5/11/2001	11/27/2001	200.00
7/30/2001	2/11/2002	196.00
10/3/2001	4/18/2002	195.00

8/28/2001	3/8/2002	190.00
8/27/2001	2/27/2002	184.00
8/7/2001	2/7/2002	184.00
7/19/2001	1/18/2002	183.00
7/18/2001	1/15/2002	181.00
11/21/2001	5/18/2002	178.00
8/14/2001	2/7/2002	177.00
8/13/2001	1/28/2002	169.00



9/7/2001	2/22/2002	168.00
7/24/2001	1/4/2002	164.00
7/30/2001	1/8/2002	162.00
10/30/2001	4/9/2002	181.00
8/28/2001	2/4/2002	160.00
10/5/2001	3/14/2002	160.00
7/20/2001	12/26/2001	159.00
7/20/2001	12/24/2001	157.00
9/4/2001	2/5/2002	164.00
8/28/2001	1/28/2002	153.00

11/13/2001	4/16/2002	153.00
11/7/2001	4/8/2002	152.00
8/6/2001	1/4/2002	151.00
7/18/2001	12/13/2001	148.00
8/30/2001	1/25/2002	148.00
7/20/2001	12/14/2001	147.00
11/1/2001	3/26/2002	145.00
8/16/2001	1/7/2002	144.00
7/20/2001	12/7/2001	140.00
9/5/2001	1/22/2002	139.00

NOV-01 11:57

10/11/2001	2/28/2002	138.00
8/29/2001	1/9/2002	133.00
7/20/2001	11/26/2001	129.00
7/23/2001	11/29/2001	129.00
10/5/2001	2/8/2002	126.00
7/20/2001	11/23/2001	126.00
7/19/2001	11/20/2001	124.00
7/18/2001	11/16/2001	121.00
9/25/2001	1/22/2002	119.00
7/17/2001	11/12/2001	116.00
8/13/2001	12/4/2001	113.00
8/20/2001	12/10/2001	112.00

8/26/2001	1/15/2002	111.00
7/30/2001	11/14/2001	107.00
10/18/2001	1/28/2002	102.00
8/25/2001	1/4/2002	101.00
8/6/2001	11/14/2001	100.00
9/26/2001	1/4/2002	100.00
7/18/2001	10/26/2001	100.00
10/22/2001	1/28/2002	98.00
1/23/2002	5/1/2002	98.00

RU04-011 10599

7/18/2001	10/22/2001	96.00
8/13/2001	11/16/2001	85.00
8/27/2001	11/28/2001	93.00
7/19/2001	10/19/2001	92.00
8/15/2001	11/12/2001	89.00
8/8/2001	11/2/2001	86.00
9/4/2001	11/27/2001	84.00
9/26/2001	12/19/2001	84.00

10/17/2001

1/8/2002

83.00

10/8/2001

12/28/2001

81.00

8/1/2001  
2/26/2002

10/19/2001  
5/15/2002

79.00  
79.00

8/1/2001

10/11/2001

71.00

10/31/2001

1/10/2002

71.00

8/8/2001

10/17/2001

69.00

7/31/2001

10/8/2001

69.00

Data to works with_RPR_DT This is the RECALL Performed on Date	FSD Copy of Cut Data Rcvd from Dennis_RPR_DT This is the Repair Date for Data from Dennis, With ABCDE Failure modes ID	# of days from Recall performed to repeat repair
--	--	--

7/20/2001	5/22/2002	306.00
7/18/2001	6/18/2002	302.00
8/8/2001	5/22/2002	287.00
7/19/2001	5/2/2002	287.00
7/20/2001	5/2/2002	286.00
7/25/2001	5/2/2002	281.00
7/17/2001	4/22/2002	279.00
7/17/2001	4/4/2002	261.00
7/30/2001	4/10/2002	254.00
7/24/2001	4/2/2002	252.00
7/20/2001	3/20/2002	243.00

PC09-011 18593

8/20/2001	10/25/2001	68.00
8/13/2001	10/16/2001	64.00
8/29/2001	10/31/2001	63.00
7/18/2001	8/19/2001	63.00
11/28/2001	1/25/2002	58.00
1/14/2002	3/12/2002	67.00
10/3/2001	11/29/2001	57.00
10/4/2001	11/28/2001	53.00
10/15/2001	12/6/2001	52.00
11/6/2001	12/27/2001	51.00
10/16/2001	12/4/2001	50.00

R084-011 18592



8/20/2001	10/5/2001	46.00
4/18/2002	6/3/2002	46.00
8/13/2001	9/27/2001	45.00
9/19/2001	11/2/2001	44.00
6/27/2001	10/10/2001	44.00
6/26/2001	10/10/2001	43.00
12/8/2001	1/19/2002	42.00
8/17/2001	9/28/2001	42.00

R004-011 18293

1/21/2002

3/2/2002

40.00

10/27/2001

12/4/2001

36.00

8/1/2001

9/7/2001

37.00

10/4/2001

11/7/2001

34.00

3/20/2002

4/22/2002

33.00

10/8/2001

11/7/2001

30.00

7/17/2001

8/16/2001

30.00

9/5/2001

10/4/2001

29.00

7/18/2001

8/15/2001

28.00

9/4/2001

10/1/2001

27.00

8/7/2001

8/29/2001

22.00

9/5/2001	8/28/2001	21.00
11/5/2001	11/28/2001	21.00
8/14/2001	8/29/2001	15.00
10/30/2001	11/14/2001	15.00
2/1/2002	2/14/2002	13.00
8/17/2001	8/29/2001	12.00
9/24/2001	10/4/2001	10.00
11/20/2001	11/27/2001	7.00
10/18/2001	10/23/2001	7.00
4/11/2002	4/16/2002	4.00
11/1/2001	11/3/2001	2.00

Data to works with_ID	Data to works with_MDL_YR	Data to works with_SORT_INDEX	Data to works with_VIN_CD		Data to works with_VEH_LINE_CD	Data to works with_MKT_DERIVED
64	2001	64 3FTNW21F81	[REDACTED]	[REDACTED]	T/F7	*
94	2001	94 3FTNW20F71	[REDACTED]	[REDACTED]	T/F7	*
16	2001	16 3FTSW31F71	[REDACTED]	[REDACTED]	T/F7	*
188	2001	188 1FTWW32F51	[REDACTED]	[REDACTED]	T/F7	*
253	2001	253 1FTSW31FX1	[REDACTED]	[REDACTED]	T/F7	*
472	2001	472 1FTNX21F81B	[REDACTED]	[REDACTED]	T/F7	*
250	2001	250 1FTSW31S11	[REDACTED]	[REDACTED]	T/F7	*
174	2001	174 1FTWW32F81	[REDACTED]	[REDACTED]	T/F7	*
349	2001	349 1FTNX21S21B	[REDACTED]	[REDACTED]	T/F7	*
66	2001	66 3FTNW21F81	[REDACTED]	[REDACTED]	T/F7	*
481	2001	481 1FTNX21F81B	[REDACTED]	[REDACTED]	T/F7	*

RO94-011 16596

2	2001	2 3FT8X30801M	T/F7	*
129	2001	129 1FTWW33F91	T/F7	*
489	2001	489 1FTNX21F31E	T/F7	*
45	2001	45 3FTNW21891M	T/F7	*
41	2001	41 3FTNX20F91MA	T/F7	*
315	2001	315 1FT3W31F01E	T/F7	*
75	2001	75 3FTNW21F31M	T/F7	*
167	2001	167 1FTWW33F01E	T/F7	*
130	2001	130 1FTWW33F81E	T/F7	*
370	2001	370 1FTNX21L91E	T/F7	*
376	2001	376 1FTNX21L81E	T/F7	*
517	2001	517 1FTNX21F01E	T/F7	*
59	2001	59 3FTNW21F91M	T/F7	*

77	2001	77 3FTNW21F2	[REDACTED]	T/F7	*
481	2001	481 1FTNX21F4	[REDACTED]	T/F7	*
156	2001	156 1FTWW33F	[REDACTED]	T/F7	*
163	2001	163 1FTWW33F	[REDACTED]	T/F7	*
477	2001	477 1FTNX21F5	[REDACTED]	T/F7	*
289	2001	289 1FTSW31F8	[REDACTED]	T/F7	*
70	2001	70 3FTNW21F4	[REDACTED]	T/F7	*
235	2001	235 1FTSX31F3	[REDACTED]	T/F7	*
379	2001	379 1FTNX21LB	[REDACTED]	T/F7	*
23	2001	23 3FTSW31F2	[REDACTED]	T/F7	*
490	2001	490 1FTNX21F4	[REDACTED]	T/F7	*
329	2001	329 1FTNX21S9	[REDACTED]	T/F7	*

308	2001	308 1FTSW31F1	[REDACTED]	T/F7	*
188	2001	188 1FTWW33F0	[REDACTED]	T/F7	*
504	2001	504 1FTNX21F2	[REDACTED]	T/F7	*
111	2001	111 1FTWX32F9	[REDACTED]	T/F7	*
153	2001	153 1FTWW33F3	[REDACTED]	T/F7	*
430	2001	430 1FTNX21L0	[REDACTED]	T/F7	*
402	2001	402 1FTNX21L3	[REDACTED]	T/F7	*
178	2001	178 1FTWW32F8	[REDACTED]	T/F7	*
30	2001	30 3FTSW30F2	[REDACTED]	T/F7	*
309	2001	309 1FTSW31F1	[REDACTED]	T/F7	*
133	2001	133 1FTWW33F8	[REDACTED]	T/F7	*

283	2001	283 1FTSW31F41	[REDACTED]	T/F7	*
341	2001	341 1FTNX21S51E	[REDACTED]	T/F7	*
447	2001	447 1FTNX21F91E	[REDACTED]	T/F7	*
246	2001	246 1FTSW31S71E	[REDACTED]	T/F7	*
6	2001	6 3FTSW31FX1	[REDACTED]	T/F7	*
338	2001	338 1FTNX21S71E	[REDACTED]	T/F7	*
302	2001	302 1FTSW31F31E	[REDACTED]	T/F7	*
383	2001	383 1FTNX21L51E	[REDACTED]	T/F7	*
281	2001	281 1FTSW31F61E	[REDACTED]	T/F7	*
182	2001	182 1FTWW32F71	[REDACTED]	T/F7	*



7	2001	7 3FTSW31FX1	[REDACTED]	T/F7	*
422	2001	422 1FTNX21L11E	[REDACTED]	T/F7	*
67	2001	67 3FTNW21F61	[REDACTED]	T/F7	*
417	2001	417 1FTNX21L21E	[REDACTED]	T/F7	*
184	2001	184 1FTWW32F6	[REDACTED]	T/F7	*
327	2001	327 1FTNX21SX1	[REDACTED]	T/F7	*
317	2001	317 1FTSW30S11	[REDACTED]	T/F7	*
118	2001	118 1FTWX32F01	[REDACTED]	T/F7	*
211	2001	211 1FTSX31S21E	[REDACTED]	T/F7	*
24	2001	24 3FTSW31F11	[REDACTED]	T/F7	*
228	2001	228 1FTSX31F81E	[REDACTED]	T/F7	*
345	2001	345 1FTNX21G31	[REDACTED]	T/F7	*
112	2001	112 1FTWX32F01	[REDACTED]	T/F7	*
280	2001	280 1FTSW31F61	[REDACTED]	T/F7	*

354	2001	354 1FTNX21S0	[REDACTED]	T/F7	*
435	2001	435 1FTNX21FX	[REDACTED]	T/F7	*
484	2001	484 1FTNX21F7	[REDACTED]	T/F7	*
441	2001	441 1FTNX21F0	[REDACTED]	T/F7	*
311	2001	311 1FT8W31F0	[REDACTED]	T/F7	*
313	2001	313 1FT8W31F0	[REDACTED]	T/F7	*
426	2001	426 1FTNX21L1	[REDACTED]	T/F7	*

Data to works with_BOD_CAB_STL	Data to works with_VER_SERIES_C D	Data to works with_DRIVE_CD	Data to works with_ENG_CD	Data to works with_TRANS_CD	Data to works with_PLANT_CD	Data to works with_PRODN_DT
T/BC	T/BD	T/E	T/DS	T/DS	A2	6/15/2001
T/BC	T/BD	T/B	T/DS	T/DS	A2	3/5/2001
T/BC	T/CD	T/E	T/DS	T/DS	A2	6/2/2001
T/BC	T/CD	T/B	T/DS	T/DS	A1	4/25/2001
T/BC	T/CD	T/E	T/DS	T/DS	A1	5/10/2001
T/BD	T/BD	T/E	T/DS	T/DS	A1	5/2/2001
T/BC	T/CD	T/E	T/WA	T/DE	A1	1/30/2001
T/BC	T/CD	T/B	T/DS	T/DS	A1	4/21/2001
T/BD	T/BD	T/E	T/WA	T/DE	A1	11/9/2000
T/BC	T/BD	T/E	T/DS	T/DS	A2	4/24/2001
T/BD	T/BD	T/E	T/DS	T/DS	A1	1/10/2001

K004-011 18903

T/BD	T/CD	T/B	T/WA	T/DE	A2	4/26/2001
T/BC	T/CD	T/E	T/DS	T/DS	A1	2/1/2001
T/BD	T/BD	T/E	T/DS	T/DS	A1	3/28/2001
T/BC	T/BD	T/E	T/WA	T/DE	A2	3/24/2001
T/BD	T/BD	T/B	T/DS	T/DS	A2	1/22/2001
T/BC	T/CD	T/E	T/DS	T/DS	A1	11/21/2000
T/BC	T/BD	T/E	T/DS	T/DS	A2	2/6/2001
T/BC	T/CD	T/E	T/DS	T/DS	A1	2/5/2001
T/BC	T/CD	T/E	T/DS	T/DS	A1	4/17/2001
T/BD	T/BD	T/E	T/VZ	T/DE	A1	2/25/2001
T/BD	T/BD	T/E	T/VZ	T/DE	A1	4/18/2001
T/BD	T/BD	T/E	T/DS	T/DS	A1	11/1/2000
T/BC	T/BD	T/E	T/DS	T/DS	A2	12/9/2000

T/BC	T/BD	T/E	T/DS	T/DB	A2	4/8/2001
T/BD	T/BD	T/E	T/DS	T/DB	A1	11/21/2000
T/BC	T/CD	T/E	T/DS	T/DB	A1	11/21/2000
T/BC	T/CD	T/E	T/DS	T/DB	A1	3/28/2001
T/BD	T/BD	T/E	T/DS	T/DB	A1	4/10/2001
T/BC	T/CD	T/E	T/DS	T/DB	A1	12/15/2000
T/BC	T/BD	T/E	T/DS	T/DB	A2	12/21/2000
T/BD	T/CD	T/E	T/DS	T/DB	A1	5/4/2001
T/BD	T/BD	T/E	T/VZ	T/DE	A1	4/8/2001
T/BC	T/CD	T/E	T/DB	T/DB	A2	3/28/2001
T/BD	T/BD	T/E	T/DS	T/DB	A1	2/20/2001
T/BD	T/BD	T/E	T/WA	T/DE	A1	5/7/2001

T/BC	T/CD	T/E	T/DS	T/DB	A1	4/27/2001
T/BC	T/CD	T/E	T/DS	T/DB	A1	10/21/2000
T/BD	T/BD	T/E	T/DS	T/DB	A1	4/10/2001
T/BD	T/CD	T/B	T/DS	T/DB	A1	5/18/2001
T/BC	T/CD	T/E	T/DS	T/DB	A1	4/30/2001
T/BD	T/BD	T/E	TAZ	T/DE	A1	4/5/2001
T/BD	T/BD	T/E	TAZ	T/DE	A1	4/10/2001
T/BC	T/CD	T/B	T/DS	T/DB	A1	12/21/2000
T/BC	T/CD	T/B	T/DS	T/DB	A2	1/8/2001
T/BC	T/CD	T/E	T/DS	T/DB	A1	2/9/2001
T/BC	T/CD	T/E	T/DS	T/DB	A1	3/23/2001

T/BC	T/CD	T/E	T/DS	T/DB	A1	2/13/2001
T/BD	T/BD	T/E	T/WA	T/DE	A1	10/4/2000
T/BD	T/BD	T/E	T/DS	T/DB	A1	1/18/2001
T/BC	T/CD	T/E	T/WA	T/DE	A1	2/15/2001
T/BC	T/CD	T/E	T/DS	T/VF	A2	3/28/2001
T/BD	T/BD	T/E	T/WA	T/DE	A1	10/2/2000
T/BC	T/CD	T/E	T/DS	T/DB	A1	1/3/2001
T/BD	T/BD	T/E	T/VZ	T/DE	A1	4/5/2001
T/BC	T/CD	T/E	T/DS	T/DB	A1	1/8/2001
T/BC	T/CD	T/B	T/DS	T/DB	A1	2/9/2001

T/BC	T/CD	T/E	T/DS	T/TF	A2	3/28/2001
T/BD	T/BD	T/E	T/VZ	T/DE	A1	4/11/2001
T/BC	T/BD	T/E	T/DS	T/DB	A2	11/28/2000
T/BD	T/BD	T/E	T/VZ	T/DE	A1	3/25/2001
T/BC	T/CD	T/B	T/DS	T/DB	A1	4/11/2001
T/BD	T/BD	T/E	T/WA	T/DE	A1	4/8/2001
T/BC	T/CD	T/B	T/WA	T/DE	A1	4/8/2001
T/BD	T/CD	T/B	T/DS	T/DB	A1	11/5/2000
T/BD	T/CD	T/E	T/WA	T/DE	A1	4/14/2001
T/BC	T/CD	T/E	T/DS	T/DB	A2	5/4/2001
T/BD	T/CD	T/E	T/DS	T/DB	A1	11/3/2000
T/BD	T/BD	T/E	T/WA	T/DE	A1	3/8/2001
T/BD	T/CD	T/B	T/DS	T/DB	A1	11/5/2000
T/BC	T/CD	T/E	T/DS	T/DB	A1	1/12/2001



T/BD	T/BD	T/E	T/WA	T/DE	A1	4/3/2001
T/BD	T/BD	T/E	T/DS	T/DS	A1	1/24/2001
T/BD	T/BD	T/E	T/DS	T/DS	A1	5/22/2001
T/BD	T/BD	T/E	T/DS	T/DS	A1	4/11/2001
T/BC	T/CD	T/E	T/DS	T/DS	A1	3/8/2001
T/BC	T/CD	T/E	T/DS	T/DS	A1	1/9/2001
T/BD	T/BD	T/E	T/VZ	T/DE	A1	12/23/2000

Data to works with_WRTY_START_ DT	Data to works with_NAME	Data to works with_DOC_NUM	Data to works with_PH_NUM	Data to works with_WCC_CD	Data to works with_PART_NUM_CA US_PREF	Data to works with_PART_NUM_CA US_BASE
6/23/2001	BRINSON FORD, INC.	016910A	8749880 *		*	*
10/29/2001	SEWELL FORD, INC.	20485201	3320421 *		*	*
6/28/2001	SUBURBAN FORD	38307304	3317600 *		*	*
7/26/2001	FUTURE FORD	426275D	7863673 *		*	*
8/7/2001	COUNTRY FORD	11370701	8662218 *		*	*
10/14/2001	WAYNE AKERS FORD, INC.	208248A	6824444 *		*	*
7/8/2001	SKYLINE SALES, INC.	1827652	6812411 *		*	*
8/6/2001	JACKY W JONES FORD INC	8610201	8662168 *		*	*
11/20/2000	HINES PARK FORD, INC.	1853302	4376700 *		*	*
9/16/2001	BILL HAYES FORD SALES, INC.	257241	3785477 *		*	*
8/31/2001	HORIZON FORD	133452A	7639100 *		*	*

R064-011 18819

12/6/2001	PALMER MOTOR SALES, INC.	8898201	4751301 *	*	*
6/14/2001	PEFFLEY FORD, INC.	16748403	2787821 *	*	*
5/29/2001	MILLER FORD-MERCURY	1678202	4757204 *	*	*
7/4/2001	KEN GRODY FORD - CARLSBAD	4854251	4389171 *	*	*
8/4/2001	RAMIREZ FORD SALES, INC.	5141850	4872682 *	*	*
8/25/2001	EXTREME FORD, INC.	173723A	7474700 *	*	*
4/13/2001	LITHIA FORD LINCOLN MERCURY OF	008042C	6734485 *	*	*
2/22/2001	WHITMAN FORD COMPANY	191804	5473873 *	*	*
4/28/2001	GARRETT & DYER FORD INC	6749901	4843431 *	*	*
3/19/2001	HAYNES FORD INC.	4592303	6887358 *	*	*
11/17/2001	SMITHTOWN FORD, INC.	8442501	2853240 *	*	*
9/5/2001	COGSWELL MTRS INC	147157A	9882885 *	*	*
1/8/2001	BARBER-DYSON FORD L-M, L.L.C.	1288702	2250450 *	*	*

7/2/2001	MCREE FORD, INC.	422032D	3371529 *	*	*
	GENE MESSER				
1/8/2001	FORD	19037302	7932727 *	*	*
12/28/2000	EARL TINDOL FORD, INC.	14238808	8678341 *	*	*
	MIKE CASTRUCCI				
4/23/2001	FORD SALES, INC	13314701	8317010 *	*	*
	FREEDOM FORD				
10/8/2001	SALES, INC.	1011282	4717823 *	*	*
	GRAND TRAVERSE				
1/5/2001	AUTO COMPANY	11182801	8222000 *	*	*
	PHIL LONG FORD				
1/11/2001	OF DENVER, LLC	50088701	9823873 *	*	*
	COLONY FORD				
	TRUCK CENTER,				
6/14/2001	INC.	083648B	4873800 *	*	*
	STONE'S FORD-				
9/24/2001	MERCURY	734801	3944105 *	*	*
	ROBBERSON FORD				
5/18/2001	SALES, INC.	2045440	3824521 *	*	*
	CECIL ATKISSON				
8/28/2001	FORD	082048A	4285381 *	*	*
	REDEKER FORD INC	3858601	8420800 *	*	*

7/2/2001	BUTTERFIELD FORD	9422240	5882441 *	*	*
	EMERLING FORD				
6/1/2001	MERCURY INC	7562752	5924949 *	*	*
6/11/2001	RON ALPEN FORD	2389001	7854468 *	*	*
8/1/2001	BUD KEARNEY, INC.	1688960	7662106 *	*	*
	LITHIA FORD OF				
8/9/2001	BOISE	181172A	3425811 *	*	*
	BOB DAVIDSON				
8/22/2001	FORD, INC.	195830C	6616400 *	*	*
	WARNER ROBINS				
	FORD LINCOLN-				
8/3/2001	MER	8455851	9229131 *	*	*
	BROWNWOOD				
	FORD-LINCOLN-				
1/13/2001	MERCURY	6019852	8431651 *	*	*
8/4/2001	WILSON MOTORS	D43348A	5738351 *	*	*
	DOUG STANLEY				
2/26/2001	FORD	127478B	2238060 *	*	*
	TRANUM COUNTRY				
4/13/2001	FORD, INC.	2888201	4467377 *	*	*

8/27/2001	UTAH AUTO COLLECTION	50378502	0743200 *	*	*
8/13/2001	BILLINGSLEY FORD OF LAWTON, IN	104602D	2482300 *	*	*
5/11/2001	HOBLOT MOTORS	8227852	4682161 *	*	*
3/7/2001	BACKUS MOTORS INC	962401	6842701 *	*	*
6/21/2001	ZIEMS FORD CORNERS, INC.	3304840	3251961 *	*	*
3/8/2001	BELICKMAN FORD, INC.	100822D	2275700 *	*	*
2/3/2001	BOB BIGHT FORD INC	111587B	5246550 *	*	*
6/18/2001	PAUL CERAME FORD, INC.	071275A	8382400 *	*	*
1/25/2001	MULLAHEY FORD MONTEZUMA	10820304	4813873 *	*	*
6/18/2001	MOTOR COMPANY	588801	4727586 *	*	*

	ZIEMS FORD					
6/21/2001	CORNERS, INC.	3381248	3251981 *	*	*	
8/30/2001	VARSITY FORD	13485101	9982300 *	*	*	
	SOUTHPOINT FORD					
1/8/2001	MERCURY, INC.	2725205	9253333 *	*	*	
	RENNER MOTORS					
10/2/2001	INC	5751701	3721581 *	*	*	
	BILL SMITH FORD					
5/9/2001	INC	3480351	6828785 *	*	*	
	JIM DOYLE FORD					
8/30/2001	INC	056125C	8758100 *	*	*	
10/3/2001	SENATOR FORD INC	31139401	3813000 *	*	*	
	DOBBS FORD AT					
11/16/2000	WOLFCHASE	7387851	3825555 *	*	*	
5/5/2001	MCMULLEN FORD	851840	3680531 *	*	*	
8/15/2001	SALE FORD	2099803	35235 *	*	*	
9/27/2001	DON AADSEN FORD	141020A	6784420 *	*	*	
	EIDE FORD-					
	MERCURY-LINCOLN,					
8/30/2001	INC	338424A	2223500 *	*	*	
	GENE MESSER					
11/28/2000	FORD	19882602	7832727 *	*	*	
3/8/2001	EL CAJON FORD	8429850	5798888 *	*	*	

TRI-STAR FORD-  
8/30/2001 MERCURY, INC. 212743A

4599300 \*

\*

\*

WESTERN SLOPE  
2/14/2001 AUTO COMPANY 218003A

2430643 \*

\*

\*

5/20/2001 BRIEN MOTORS INC 9583553  
KEN STILLWELL

7433421 \*

\*

\*

8/30/2001 FORD-MERCURY 066326A

8492121 \*

\*

\*

5/21/2001 BRIEN MOTORS INC 9144053

7433421 \*

\*

\*

8/8/2001 DAN COLLINS FORD 1694901

9474965 \*

\*

\*

WESLACO FORD-  
MERCURY, INC. 5522301

9683151 \*

\*

\*



Data to works with_PART_NUM_CA US_SUFF	Data to works with_CUST_CONC_C D	Data to works with_COND_CD	Data to works with_RPR_DT	Data to works with_TIS_WSD	Data to works with_CLM_KEY	Data to works with_MILGE
*	*	*	8/7/2001	2	5382950	2873
*	*	*	7/27/2001	0	3114938	11
*	*	*	7/2/2001	1	2701583	604
*	*	*	7/30/2001	1	2758377	655
*	*	*	9/24/2001	2	4858737	5841
*	*	*	7/19/2001	0	2444841	6
*	*	*	8/24/2001	2	4085466	6370
*	*	*	7/21/2001	0	2810951	15
*	*	*	8/23/2001	10	3912828	25263
*	*	*	8/7/2001	0	2790861	14
*	*	*	9/8/2001	1	3560962	512

PC04-011 10017

.	.	.	8/10/2001	0	3210930	4
.	.	.	8/16/2001	3	2959489	5302
.	.	.	9/25/2001	2	4602014	1629
.	.	.	9/25/2001	3	3925549	3925
.	.	.	10/4/2001	5	7394258	10781
.	.	.	7/24/2001	0	3589104	6
.	.	.	7/30/2001	4	2758829	10100
.	.	.	8/20/2001	4	3021809	5085
.	.	.	10/11/2001	8	4304229	14289
.	.	.	8/21/2001	7	4546570	11217
.	.	.	12/3/2001	1	5542739	17
.	.	.	12/26/2001	4	5151225	2933
.	.	.	9/11/2001	9	3810735	19838

*	*	*	10/4/2001	4	4245089	7488
*	*	*	9/7/2001	9	3818718	14471
*	*	*	8/3/2001	8	2713814	12189
*	*	*	10/11/2001	8	4340327	12551
*	*	*	12/13/2001	3	6451190	1787
*	*	*	7/25/2001	7	2542770	16839
*	*	*	6/16/2001	8	3117324	10916
*	*	*	7/30/2001	2	4482728	3300
*	*	*	11/13/2001	2	5520595	1600
*	*	*	9/11/2001	4	3624012	4927
*	*	*	8/11/2001	0	2935007	10
*	*	*	2/25/2002	10	7060187	6059

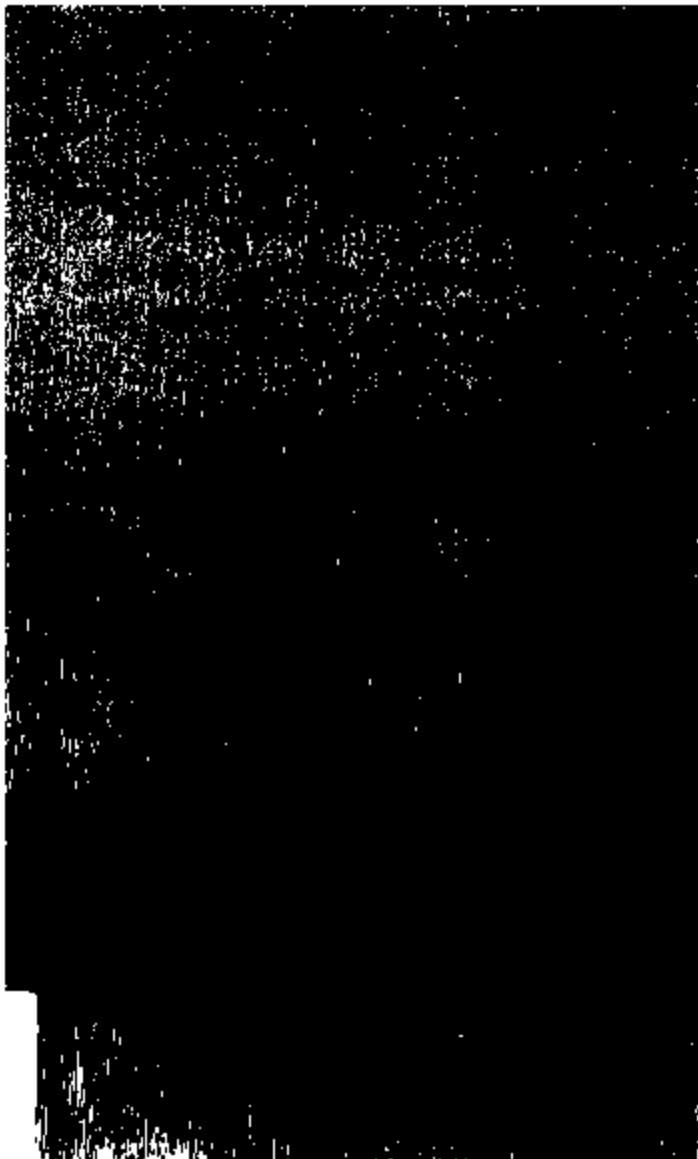
*	*	*	9/17/2001	3	4880573	5086
*	*	*	7/23/2001	3	2812438	18428
*	*	*	11/8/2001	8	4932960	9401
*	*	*	7/17/2001	2	3782325	1286
*	*	*	8/5/2001	3	3457924	3469
*	*	*	1/4/2002	6	8081924	2930
*	*	*	2/7/2002	7	8780204	8511
*	*	*	10/19/2001	10	4544082	24855
*	*	*	10/10/2001	6	4308567	7369
*	*	*	8/14/2001	7	3841637	18182
*	*	*	8/6/2001	4	2814786	5135

*	*	*	8/15/2001	2	2093363	4712
*	*	*	8/16/2001	3	3018446	4718
*	*	*	2/6/2002	10	6742734	21172
*	*	*	8/13/2001	7	3825063	2411
*	*	*	8/13/2001	2	3036616	7032
*	*	*	9/19/2001	7	3789027	12764
*	*	*	12/20/2001	11	5868123	33168
*	*	*	12/5/2001	7	5634419	4828
*	*	*	6/31/2001	6	3466799	9242
*	*	*	4/11/2002	11	8149231	22553

*	*	*	8/24/2001	3	4159533	8461
*	*	*	8/29/2001	0	3484375	18
*	*	*	1/11/2002	13	6256653	21992
*	*	*	10/4/2001	1	4177833	8229
*	*	*	9/19/2001	5	3911873	5420
*	*	*	9/21/2001	1	3875247	514
*	*	*	7/17/2001	0	2421229	3
*	*	*	3/18/2002	17	7486938	14348
*	*	*	10/28/2001	6	4728348	2891
*	*	*	9/11/2001	3	3557700	10071
*	*	*	8/4/2001	0	2942600	13
*	*	*	12/4/2001	6	5678009	6868
*	*	*	11/20/2001	12	5219429	12136
*	*	*	9/4/2001	7	3432134	11230

RO04-011 16622

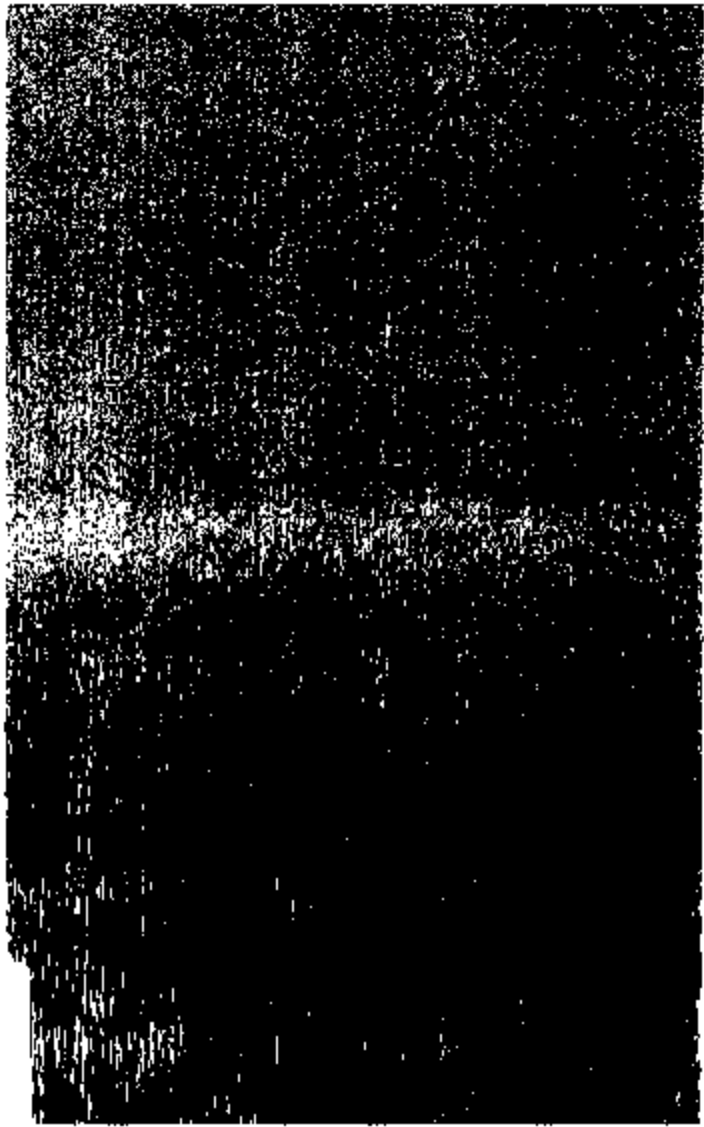
*	*	*	11/14/2001	3	5108833	4701
*	*	*	3/14/2002	14	7416987	32857
*	*	*	2/14/2002	8	6899813	12777
*	*	*	10/11/2001	4	4861878	5458
*	*	*	12/11/2001	6	5730374	9379
*	*	*	10/10/2001	3	4368568	21
*	*	*	10/9/2001	-1	4248017	39



RO94-011 1A924

Data to works with_DLR_CD	Data to works with_DLR_SUB_CD	Data to works with_REGION_CD	Data to works with_ST_PROV_CD
2500 *		NA	TX
2581 *		NA	TX
7884 *		NA	GA
7748 *		NA	GA
7480 *		NA	TX
4879 *		NA	FL
8862 *		NA	OR
183 *		NA	GA
1425 *		NA	MI
8167 *		NA	MO
8830 *		NA	WA

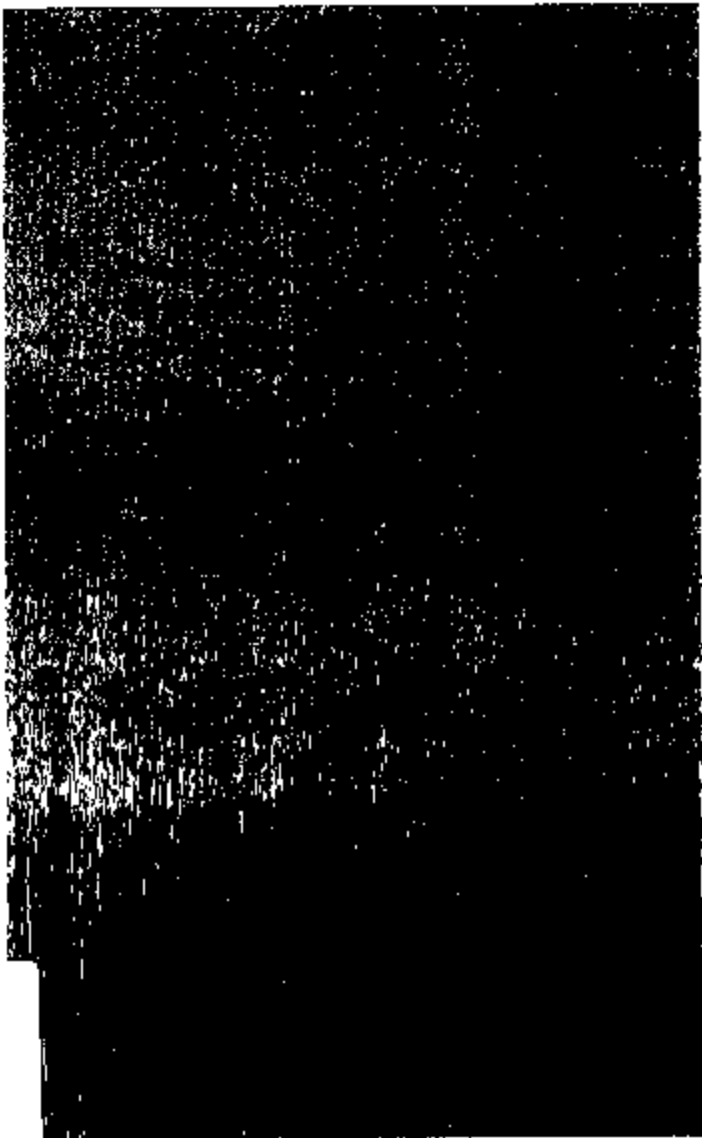




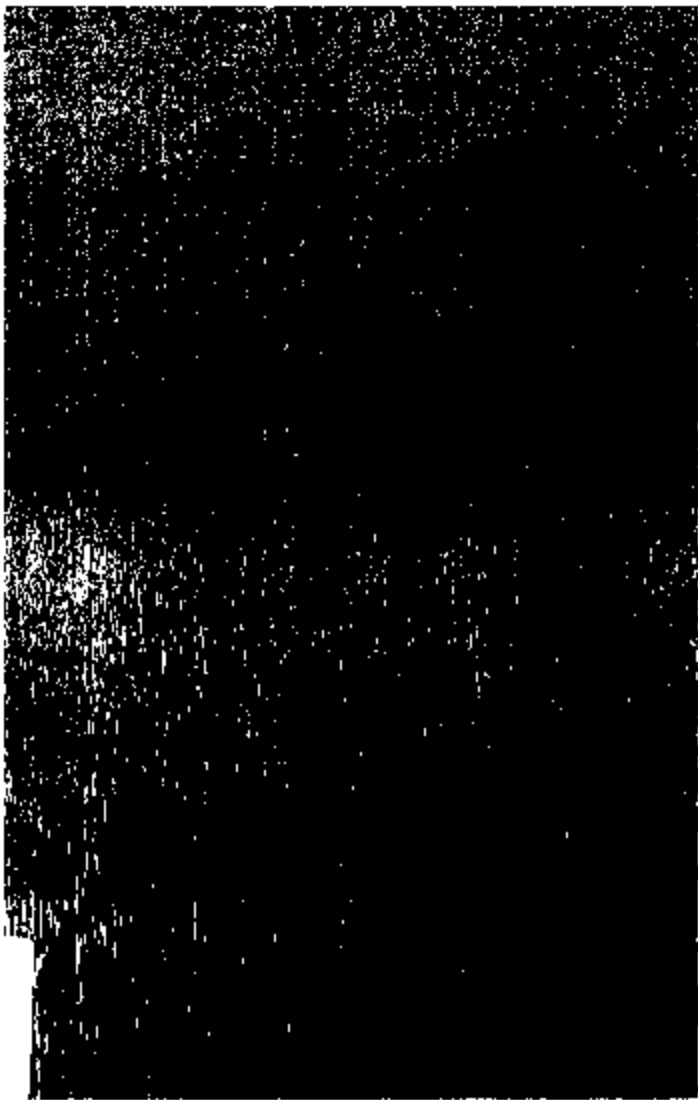
RD04-011 15625

2714 *	NA	MI
1960 *	NA	OH
8594 *	NA	OR
5512 *	NA	CA
4448 *	NA	TX
3984 *	NA	MO
7814 *	NA	OR
2986 *	NA	MI
1021 *	NA	NC
3885 *	NA	NY
876 *	NA	NY
5988 *	NA	AR
772 *	NA	OK

RCR-011 18826

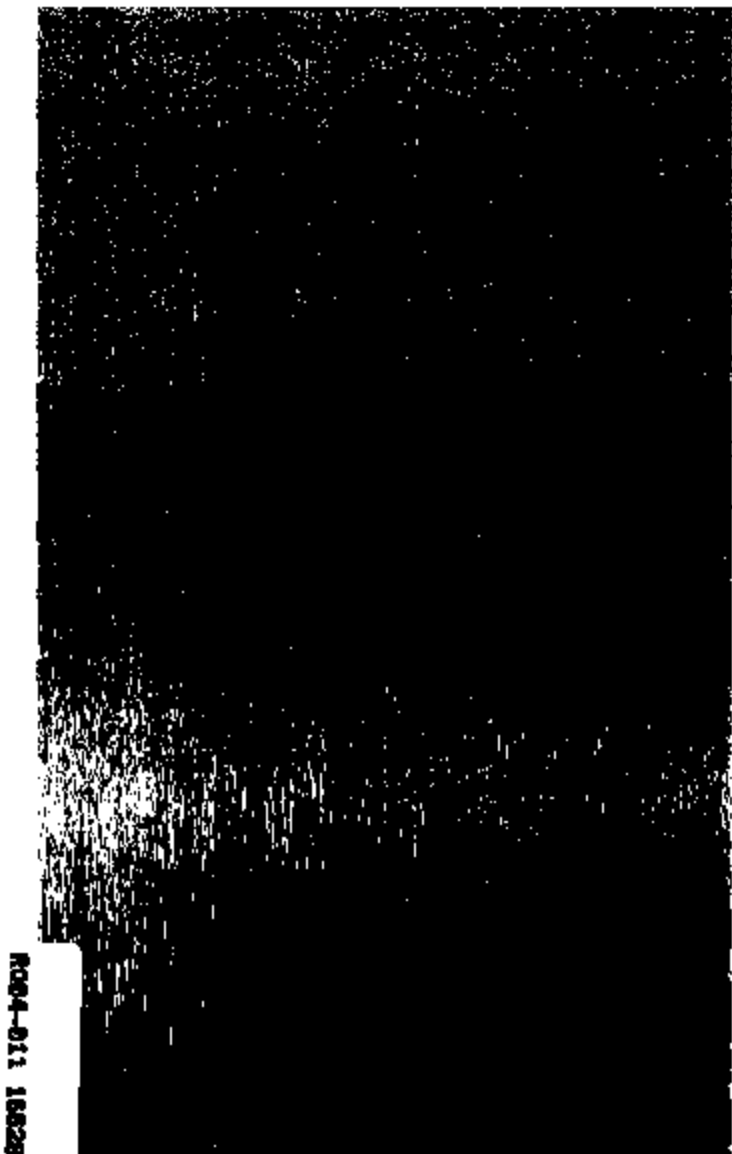


4443 *	NA	TX
3588 *	NA	TX
831 *	NA	NC
1908 *	NA	OH
1808 *	NA	PA
8688 *	NA	MI
8130 *	NA	CO
8014 *	NA	RI
3408 *	NA	IA
8518 *	NA	OR
4588 *	NA	TX
9898 *	NA	MI



0004-011 19527

8404 *	NA	UT
572 *	NA	NY
20101 *	NA	IA
20577 *	NA	NY
3897 *	NA	ID
88 *	NA	MD
3281 *	NA	GA
2874 *	NA	TX
2591 *	NA	TX
2636 *	NA	TX
4285 *	NA	TX

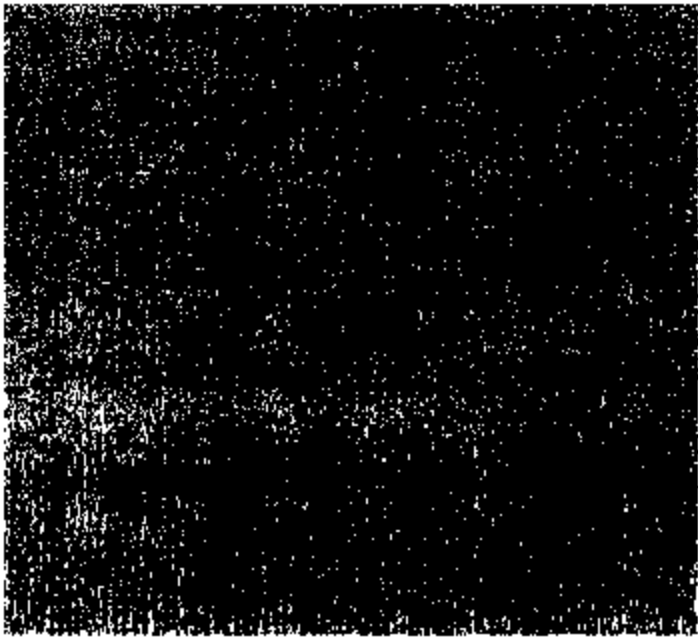


RC04-011 18828

3323 *	NA	UT
1771 *	NA	OK
7736 *	NA	CA
9062 *	NA	CT
20341 *	NA	NM
8012 *	NA	MO
6113 *	NA	MO
2786 *	NA	MO
7844 *	NA	CA
352 *	NA	GA

NOVA-011 10628

20341 *	NA	NM
2738 *	NA	MI
4168 *	NA	LA
4766 *	NA	IN
1108 *	NA	NC
800 *	NA	NY
7762 *	NA	CA
4357 *	NA	TN
7262 *	NA	IA
6326 *	NA	GA
5398 *	NA	MT
9480 *	NA	ND
3556 *	NA	TX
5456 *	NA	CA



7424 *	NA	PA
3182 *	NA	CO
8801 *	NA	WA
9524 *	NA	MI
8801 *	NA	WA
583 *	NA	OR
4805 *	NA	TX

Data to works  
with\_CPSC\_CD\_6

Data to works  
with\_VIN\_CD

Data to works with\_TECH\_TXT1

Data to works with\_CUST\_TXT

Data to works  
with\_AREA\_CD

Data to works  
with\_COUNTRY\_CD

*	3FTNW21F81M	[REDACTED]	REPLACED OUTBOARD SEASTBELT	CHECK RECALL 01S21	903 USA
*	3FTNW20F71M	[REDACTED]	REPLACE 1 BUCKLE PER RECALL 01S21 INSTRUCTIONS	01S32RECALL SEAT BELT BUCKLE	916 USA
*	3FTSW31F71M	[REDACTED]	1 INSPECTED, OK	RECALL 01S21 SEAT BELT	916 USA
*	1FTWW32F51E	[REDACTED]	REPLACE RIGHT BUCKLE REPLACED DRIVER SIDE SEATBELT	SEAT BELT RETENTION, RENTAL OK CUSTOMER STATES SEAT BELT BROKEN	916 USA 254 USA
*	1FTNX21F61E	[REDACTED]	RECALL01S21 WARR 2071 INSPECT ALL OK	01S21 SEAT BELT BUCKLE	561 USA
*	1FTSW31S11E	[REDACTED]	01S21	01S21	503 USA
*	1FTWW32F81E	[REDACTED]	RECALL COMPLETED, PASSENGER SIDE	RECALL 01S21 SEAT BUCKLE...PASS SIDE FAIL...MED GRAPH LEATHER	708 USA
*	1FTNX21S21E	[REDACTED]	REPLACED PASS SIDE SEATBELT PER RECALL	SEAT BELT RECALL 01S21	248 USA
*	3FTNW21F91M	[REDACTED]			673 USA
*	1FTNX21F81E	[REDACTED]	PERFORMED RECALL 01S21 AND FOUND RECALL DID NOT APPLY	PERFORM RECALL 01S21 SEAT BELT BUCKLE	208 USA

3FTSX30S01M	REPLACED ONE BUCKLE OTHERS OKAY	PERFORM RECALL 01S21 SEAT BELT BUCKLE	734 USA
1FTWW33F91	RECALL 01S21 PERFORMED RECALL 01S21, TEST ALL SEAT BELT BUCKLES, ALL TEST OK AT THIS TIME	RECALL 01S21 SEAT BELT BUCKLE	937 USA
1FTNX21F31E	REPLACED PASS SIDE BELT BUCKLE, FAILED	RECALL # 01 S 21 SEAT BELT BUCKLE	541 USA
3FTNW21S91	01S21 PERFORMED RECALL	PERFORM RECALL 01S21 SEAT BELT BUCKLE	760 USA
3FTNX20F81M	INSPECTED & REPLACED RIGHT SIDE BUCKLE	RECALL 01S21	956 USA
1FTSW31F01	PERFORM RECALL	RECALL 01S21 SEATBELT BUCKLE	913 USA
3FTNW21F31	INSPECTION ONLY	RECALL 01S21	641 USA
1FTWW33F01	PERFORM RECALL 01S12B 3	C S FUEL FILLER NECK IS GROUNDING	734 USA
1FTWW33F81	INSPECT FRONT SEAT BELT BUCKLES. OK	RECALL # 01S21 SEAT BELT BUCKLE	828 USA
1FTNX21L01M	PERFORMED RECALL 01S21 REPLACED BOTH FRONT SEAT BELTS PER RECALL	RECALL 01S21 OPEN ON VEHICLE	518 USA
1FTNX21L81M	PERFORMED RECALL 2B33 RM INSPECTED AND REPLACED PASS SIDE SEAT	RECALL 01S21 SEATBELT	631 USA
1FTNX21F01M	BELT BUCKLE PER RECALL PERFORM RECALL AS PER INSTRUCTIONS	RECALL 01S21	479 USA
3FTNW21F81		01S21 SEAT BELT BUCKLE	580 USA



•	3FTNW21F21	INSPECT ONLY, OKAY	RECALL 00S21	281 USA
•	1FTNX21F41	INSPECT SEAT BELT BUCKLES BOTH OKAY	01S21 SEAT BELT BUCKLE RECALL	806 USA
•	1FTWW33F3	INSPECTED SEAT BUCKLE PER RECALL	RECALL 01S21 SEAT BELT BUCKLE	704 USA
•	1FTWW33F0	RECALLED BY FORD MOTOR COMPANY COMPLETED RECALL PER LETTER SEATBELTS TESTED OKAY	CUSTOMER REQUEST RECALL TO BE COMPLETED 01S21	513 USA
•	1FTNX21F51	INSPECT BELT OK	RECALL01S21	814 USA
•	1FTSW31F91			231 USA
•	3FTNW21F41	WE PERFORMED RECALL INSPECT SEAT BELTS, OK	PERFORM OPEN RECALL SEAT BELT RECALL	303 USA
•	1FTSX31F31	3300 339 PERFORMED SEAT BELT RECALL LH SIDE FAILS. NEED LH SEAT BELT ORDERED. 339 345 GOT PARTS AND TRUCK REMOVED DRIVERS SEAT FOUND WRONG PARTS, INSTALLED DRIVERS SEAT AND RECHECKED TO MAKE SU	PERFORM RECALL 01S21 FOR SEAT BELTS, SEAT BELT KEEPS POPPING OPEN WHEN HE HITS BUMP	401 USA
•	1FTNX21L81	RECALL 01S21 WPI		641 USA
•	3FTSW31F21	SEAT BELT BUCKLE INSPECT BUCKLE,OK	01S21 SEAT BELT BUCKLE SEATBELT BUCKLE INSPECTION RECALL.	541 USA
•	1FTNX21F41	AS PER RECALL		210 USA
•	1FTNX21S91	FIELD SERVICE ACTION 01S21 COMPLETED	FIELD SERVICE ACTION 01S21 SEAT BELT BUCKLE CHRIS M231945	615 USA

*	1FTSW31F	01S21 SEAT BELT BUCKLE 01S21 DONE	01S21 SEAT BELT BUCKLE	801 USA
*	1FTWW33F	RECALL 01S21 RECALL PERFORMED	01S21 SEATBELT BUCKLE	716 USA
*	1FTNX21F2		RECALL 01S21	318 USA
*	1FTWX32F6	01S21 NEEDED 01S21 INSPECT FRT SEAT BELT BUCKLES	01S21 RECALL	518 USA
*	1FTWW33F	3459 COMPLY WITH RECALL REMOVED AND REPLACED RIGHT FRONT BUCKLE RETEST BOTH. BOTH NOW PASS	W INSTALL ORDERED RIGHT FRONT SEAT BELT, FAILED RECALL TEST, CHECK ALL OTHER BELTS AGAIN 01S21 RECALL 2001 C V, EXCURSION, EXPEDITION, F 150 550, G MARQ, NAVIGATOR, RANGER, TOWN CAR, AND WINDSTAR SEAT BELT BUCKLE RETENTION	208 USA
*	1FTNX21L0	2930 PERFORM RECALL AS PER INSTRUCTIONS SEAT BELT	01S21 REPALCED PASS SIDE SEAT BELT BUCKLE PER RECALL	410 USA
*	1FTNX21L3		PASS SIDE SEAT BELT BUCKLE WILL NOT STAY LATCHED	478 USA
*	1FTWW32F	NEEDS RECALL PER OASIS COMPLETED RECALL PER OASIS	RECALL...01S21...SEAT BELT	815 USA
*	3FTSW30F	INSPECT BUCKLES(OK) AS PER 01S21	01S21 SEAT BELT BUCKLE	815 USA
*	1FTSW31F	18182 01S21 RECALL TK 3374 REPLACE LEFT FRONT SEAT BELT BUCKLE WITH BUCKET SEAT.	RECALL 01S21 SEAT BELT BUCKLE	872 USA
*	1FTWW33F	COMPLETED RECALL 01S21	RECALL 01S21	512 USA

THIS LINE PAYS 1.4 HOURS  
 WARRANTY PAY, USE LABOR  
 OP. 01821| CHECK ALL SEAT  
 BELT BUCKLES & REPLACE  
 DEFECTIVE PASSENGER  
 FRONT BUCKLE. AS PER  
 RECALL INSTRUCTIONS.

GUEST STATES SEAT BELT  
 COMES UNDONE BY IT SELF  
 PERFORM RECALL 01821

801 USA

PERFORMED INSPECTION PER  
 01821 SEAT BELT BUCKLES  
 AND VEH OK

RECALL 01821 SEAT BELT  
 BUCKLE

406 USA

01821 SEAT BELT BUCKLE  
 01821 TEST BUCKLES

01821 SEAT BELT BUCKLES

630 USA

PERFORMED RECALL 01821 AS  
 NECC

RECALL 01821

860 USA

0

01821 SEAT BELT BUCKLE

508 USA

12784 CHECK BUCKLE OK  
 PASSED

01821 SEAT BELT BUCKLE

636 USA

PERFORM RECALL 01821 PER  
 INSTRUCTIONS

PERFORM SEAT BELT RECALL  
 SOP HERE. 01821 RECALL  
 SAFETY RECALL 01821  
 DELIVERY HOLD 01MODEL  
 YEAR CROWN

816 USA

SAFETY RECALL CHECK FRONT  
 SEAT BELTS BUCKLE CHECK  
 OK .

VICTORIA, EXCURSION, EXPEDITI  
 ON, F 150, F 250 F 550, GRAND  
 MARQUIS, NAVIGATOR, RANGER,  
 TOWN CAR, AND WINDSTAR  
 VEHICLES SEATBELT BUCKLE  
 RETENT

314 USA

INSPECTED, NO FURTHER  
 REPAIRS NECESSARY  
 INSPECTED ORDERED LH SEAT  
 BELT

01821 RECALL

805 USA

478 USA

3FTSW31FX1	D 1 INSPECTED SEATBELT BUCKLE OPERATIONS PER RECALL AND OK END ML 18	SEATBELT WONT STAY LATCHED	605 USA
1FTNX21L1E	CHECK SEAT BELT TENSIONERS AS PER RECALL TECH INSPECTED VEHICLE, COMPLETED RECALL NO#01S21A CHECKED ALL BUCKLES ALL PASSED.	RECALL 01S21 SEATBELT BUCKLE	734 USA
3FTNW21F81	RECALL 01S21	RECALL 01S21	318 USA
1FTNX21L2E	RECALL 01S21A CHECKED ALL BUCKLES ALL PASSED.	CHECK AND COMPLETE RECALL NO#01S21 PERFORM RECALL 01S21,SEAT BELT RECALL	812 USA
1FTWW32F8	RECALL 01S21	01S21 BELT RECALL	910 USA
1FTNX21SX1	RECALL 01S21 PERFORMED	RECALL SEAT BELT BUCKLE	718 USA
1FTSW30S1	INSPECTED AND PASSED PASSED	PERFROM CAMPAIGN 01S21 SEAT BELT BUCKLE.	916 USA
1FTWX32F01	PERFORM RECALL #X#X# INSPECTION ONLY TESTED SEAT BELTS PER RECALL ORDERED BOTH LEFT AND RIGHT FRONT	PASSENGER SEAT BELT RECALL	901 USA
1FTSX31S21	INSPECTED AND TESTED BUCKLE AS PER RECALL, OK AT THIS TIME.	01S21 SEAT BELT BUCKLE	712 USA
3FTSW31F1	INSPECTED AND TESTED BUCKLE AS PER RECALL, OK AT THIS TIME.	N99. SAFETY RECALL 01S21. SEAT BELT BUCKLE.	708 USA
1FTSX31F81	INSPECT,OK	RECALL 01S21	408 USA
1FTNX21S31	REPLACE SEAT BELT BUCKLE AS PER RECALL	RECALL 01S21 SEAT BELT BUCKLE RETENTION	701 USA
1FTWX32F8	INSPECT OK.	01S21 SEAT BELT BUCKLE RECALL	806 USA
1FTSW31F8	RECALL 01S21 INSPECT (NO BUCKLE REPLACEMENTS)	SAFETY RECALL 01S21 CERTAIN 2001 FORD & L M; SEAT BELT BUCKLE RETENTION	619 USA

1FTNX21S01	PERFORMED RECALL 01S21 SEAT BUCKLE REPLACEMENT FORBUCKET SEATS	INSTALL ORDERED SEAT BELT PERFORM INSP REPAIRS OF RECALL 01S21(SEAT BELT BUCKLE)	724 USA
1FTNX21FX1	PERFORM 01S21		070 USA
1FTNX21F71			206 USA
1FTNX21F91	INSPECT PER 01S21 NO REPLACEMENT REQUIRED	INSPECT(NO BUCKLE REPLACEMENT)	517 USA
1FTSW31F01			206 USA
1FTSW31F01	REPLACED DRIVERS SIDE SEAT BELT PER RECALL	RECALL 01S21	541 USA
1FTNX21L11	1 PERFORMED RECALL 01S21 INSPECTION ONLY	RECALL 01S21 SEAT BELT BUCKLE RETENTION	060 USA

Data to works with_SLS_DLR_CD	Data to works with_TXN_CD	Data to works with_CNTRY_SOLD	Data to works with_QRT_CD	Data to works with_VFG_CD	Data to works with_AWS_VL_CD	Data to works with_VRT_CD
152002	01S21	USA		V00	F7	SXX
152483	01S21	USA		V00	F7	SXX
172205	01S21	USA		V00	F7	SXX
171447	01S21	USA		V00	F7	SXX
152482	01S21	USA		V00	F7	SXX
124218	01S21	USA		V00	F7	SXX
174015	01S21	USA		V00	F7	SXX
121015	01S21	USA		V00	F7	SXX
148020	01S21	USA		V00	F7	SXX
123245	01S21	USA		V00	F7	SXX
174980	01S21	USA		V00	F7	SXX

R034-011 15839

148900 01S21	USA	V00	F7	SXX
147201 01S21	USA	V00	F7	SXX
174488 01S21	USA	V00	F7	SXX
171102 01S21	USA	V00	F7	SXX
162124 01S21	USA	V00	F7	SXX
153909 01S21	USA	V00	F7	SXX
174430 01S21	USA	V00	F7	SXX
148062 01S21	USA	V00	F7	SXX
01S21	USA	V00	F7	SXX
113478 01S21	USA	V00	F7	SXX
113098 01S21	USA	V00	F7	SXX
123570 01S21	USA	V00	F7	SXX
162651 01S21	USA	V00	F7	SXX

162062 01S21	USA	V00	F7	SXX
152144 01S21	USA	V00	F7	SXX
121404 01S21	USA	V00	F7	SXX
147004 01S21	USA	V00	F7	SXX
144421 01S21	USA	V00	F7	SXX
148644 01S21	USA	V00	F7	SXX
158002 01S21	USA	V00	F7	SXX
111663 01S21	USA	V00	F7	SXX
141263 01S21	USA	V00	F7	SXX
174023 01S21	USA	V00	F7	SXX
162721 01S21	USA	V00	F7	SXX
148816 01S21	USA	V00	F7	SXX



174610 01S21	USA	V00	F7	SXX
144082 01S21	USA	V00	F7	SXX
141774 01S21	USA	V00	F7	SXX
113477 01S21	USA	V00	F7	SXX
158588 01S21	USA	V00	F7	SXX
127418 01S21	USA	V00	F7	SXX
121485 01S21	USA	V00	F7	SXX
152576 01S21	USA	V00	F7	SXX
152574 01S21	USA	V00	F7	SXX
152015 01S21	USA	V00	F7	SXX
152783 01S21	USA	V00	F7	SXX

155800 01S21	USA	V00	F7	SXX
152603 01S21	USA	V00	F7	SXX
171173 01S21	USA	V00	F7	SXX
111401 01S21	USA	V00	F7	SXX
158478 01S21	USA	V00	F7	SXX
153078 01S21	USA	V00	F7	SXX
153406 01S21	USA	V00	F7	SXX
163080 01S21	USA	V00	F7	SXX
172402 01S21	USA	V00	F7	SXX
121515 01S21	USA	V00	F7	SXX

NOB-011 10942

158476 01S21	USA	V00	F7	SXX
148426 01S21	USA	V00	F7	SXX
123223 01S21	USA	V00	F7	SXX
147515 01S21	USA	V00	F7	SXX
121786 01S21	USA	V00	F7	SXX
144011 01S21	USA	V00	F7	SXX
172206 01S21	USA	V00	F7	SXX
123008 01S21	USA	V00	F7	SXX
153556 01S21	USA	V00	F7	SXX
121435 01S21	USA	V00	F7	SXX
174818 01S21	USA	V00	F7	SXX
158487 01S21	USA	V00	F7	SXX
116215 01S21	USA	V00	F7	SXX
171034 01S21	USA	V00	F7	SXX

NOV-011 1993

144410 01S21	USA	V00	F7	SXX
156490 01S21	USA	V00	F7	SXX
174527 01S21	USA	V00	F7	SXX
148562 01S21	USA	V00	F7	SXX
174527 01S21	USA	V00	F7	SXX
172472 01S21	USA	V00	F7	SXX
152482 01S21	USA	V00	F7	SXX

Data to works with_TIS_FLAG	FSD Copy of Cut Data Rcvd from Dennis_ID	FSD Copy of Cut Data Rcvd from Dennis_MDL_YR	FSD Copy of Cut Data Rcvd from Dennis_SORT_INDE X	FSD Copy of Cut Data Rcvd from Dennis_VIN_CD	FSD Copy of Cut Data Rcvd from Dennis_VEH_LINE_C D
--------------------------------	---	--	--	--	---

Ⓢ	638	2001	161	3FTNW21F81M	T/F7
Ⓢ	485	2001	215	3FTNW20F71M	T/F7
Ⓢ	387	2001	27	3FTSW31F71M	T/F7
Ⓢ	557	2001	388	1FTWW32F51M	T/F7
Ⓢ	738	2001	511	1FTSW31FX1E	T/F7
Ⓢ	173	2001	905	1FTNX21F61E	T/F7
Ⓢ	705	2001	604	1FTSW31S11E	T/F7
Ⓢ	683	2001	373	1FTWW32F81M	T/F7
Ⓢ	248	2001	667	1FTNX21S21E	T/F7
Ⓢ	444	2001	135	3FTNW21F91M	T/F7
Ⓢ	166	2001	887	1FTNX21F81E	T/F7

②  
②  
②  
②  
②  
②  
②  
②  
②  
②  
②  
②

61	2001	9 3FTSX30S01M	T/F7
864	2001	291 1FTWW33F91	T/F7
337	2001	960 1FTNX21F31E	T/F7
629	2001	110 3FTNW21S91M	T/F7
76	2001	98 3FTNX20F91M	T/F7
733	2001	613 1FTSW31F01E	T/F7
536	2001	172 3FTNW21F31M	T/F7
678	2001	364 1FTWW33F01	T/F7
475	2001	292 1FTWW33F81	T/F7
592	2001	724 1FTNX21L81E	T/F7
133	2001	732 1FTNX21L81E	T/F7
368	2001	986 1FTNX21F01E	T/F7
636	2001	138 3FTNW21F91M	T/F7

Ⓢ  
Ⓢ  
Ⓢ  
  
Ⓢ  
Ⓢ  
Ⓢ  
Ⓢ  
  
Ⓢ  
Ⓢ  
Ⓢ  
Ⓢ  
Ⓢ

539	2001	179 3FTNW21F21	T/F7
332	2001	939 1FTNX21F41	T/F7
552	2001	331 1FTWW33F3	T/F7
877	2001	348 1FTWW33F0	T/F7
34	2001	913 1FTNX21F51	T/F7
670	2001	531 1FTSW31F91	T/F7
780	2001	165 3FTNW21F41	T/F7
97	2001	469 1FTSX31F31	T/F7
21	2001	738 1FTNX21L81	T/F7
823	2001	45 3FTSW31F21	T/F7
177	2001	938 1FTNX21F41	T/F7
17	2001	644 1FTNX21S91	T/F7

ROD-911 18449

587	2001	800 1FTSW31F11	T/F7
556	2001	356 1FTWW33F0	T/F7
164	2001	983 1FTND21F218	T/F7
11	2001	258 1FTWX32F01	T/F7
551	2001	327 1FTWW33F3	T/F7
158	2001	826 1FTNX21L018	T/F7
274	2001	780 1FTND21L318	T/F7
483	2001	977 1FTWW32F8	T/F7
528	2001	56 3FTSW30F21	T/F7
588	2001	803 1FTSW31F11	T/F7
667	2001	297 1FTWW33F8	T/F7





②

761

2001

575 1FTSW31F41E

T/F7

②

111

2001

670 1FTNX21S61E

T/F7

②

31

2001

664 1FTNX21F91E

T/F7

②

44

2001

497 1FTSW31S71E

T/F7

②

62

2001

1B 3FTSW31FX1E

T/F7

②

109

2001

658 1FTNX21S71E

T/F7

②

504

2001

567 1FTSW31F31E

T/F7

②

22

2001

763 1FTNX21L51E

T/F7

②

576

2001

666 1FTSW31F61E

T/F7

②

667

2001

381 1FTWW32F71E

T/F7

⊗	62	2001	18 3FTSW31FX1E	T/F7
⊗	27	2001	812 1FTNX21L11E	T/F7
⊗	640	2001	156 3FTNW21F81E	T/F7
⊗	151	2001	802 1FTNX21L21E	T/F7
⊗	468	2001	383 1FTWW32F81E	T/F7
⊗	237	2001	638 1FTNX21SX1E	T/F7
⊗	734	2001	616 1FTSW30S11E	T/F7
⊗	85	2001	270 1FTWX32F01E	T/F7
⊗	67	2001	426 1FTSX31S21E	T/F7
⊗	527	2001	47 3FTSW31F11E	T/F7
⊗	84	2001	453 1FTSX31F81E	T/F7
⊗	113	2001	678 1FTNX21S31E	T/F7
⊗	208	2001	259 1FTWX32F91E	T/F7
⊗	574	2001	655 1FTSW31F81E	T/F7